

In this edition:

Page 2-Restrictions on Cell Phones & Personal Devices

Page 3-Morning & Afternoon Drop-Off

Page 3-School Safety, Student Schedules, Updating Contact Information

Page 4-Daily Schedule, Parent Involvement

Page 5-Social and Emotional Supports, Athletics

Page 6-iPad Distribution, Absences, Equity Team

Page 7-Expectations for Students, Important Dates

Page 8-Contact Information



Eagle News | Enfield High School's Newsletter – Summer 2022

A Message from Principal Clark

Our EHS educators are very much looking forward to welcoming our students back for the 2022-2023 school year. This summer edition of our newsletter is designed to alert our school community to important updates and school-wide initiatives. Additionally, you will find information on how to receive important communications from the school and who to contact with any questions.



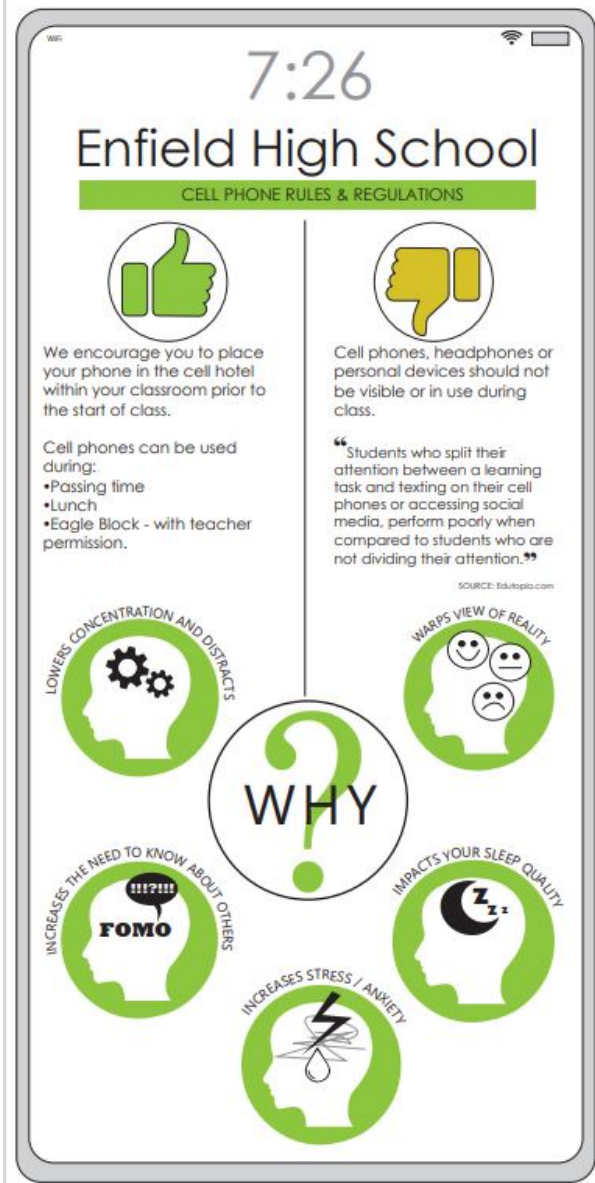
Each year we have an instructional focus and this year EHS will focus on helping students achieve optimal engagement. Students are most likely to be optimally engaged when they find the content interesting, important, and challenging. In addition to designing learning experiences that are meaningful and rigorous, our efforts will include reducing distraction by restricting the use of cell phones and other personal devices in the classroom. Students will still have access to their devices before and after school, during passing time, and during lunch. However, they will be required to keep their devices off and away during the class period.



Part of our implementation plan includes sharing the research on digital distraction with students to help them understand the rationale for limiting screen time. Not only is it important for improving academic performance, but students will also benefit from opportunities to hone their social skills. We invite our parents and guardians to partner with us to reinforce the importance of monitoring screen time and reducing digital distraction. If we are able to send a united message on the importance of keeping devices off and away during class, it will help ensure student success.



Students will still have access to their devices before and after school, during passing time, and during lunch. However, they will be required to keep their devices off and away during the class period.



Did you know?

Research shows that smartphone addiction has negative effects on students' academic performance and social and emotional well-being.

How will classroom cell phone restrictions be enforced?

1. Teachers will clearly communicate expectations.
2. Teachers will provide strategies to assist students such as being proactive and turning device off or placing it in a secure location in the classroom.
3. If there are violations, teachers will contact parents/guardians and issue a teacher detention.
4. If there are continued violations, teachers may issue a referral to the dean of students
5. Deans may issue various consequences such as a cell phone suspension where students will not be permitted to bring their cell phone to school or must drop it off in the dean's office at the beginning of the day.

Teens who spend more time on screens are more likely to be unhappy.

<https://healthmatters.nyp.org/is-social-media-threatening-teens-mental-health-and-well-being/>

The American Academy of Pediatrics recommend limiting screen time to 2 hours a day.

American Academy of Pediatrics

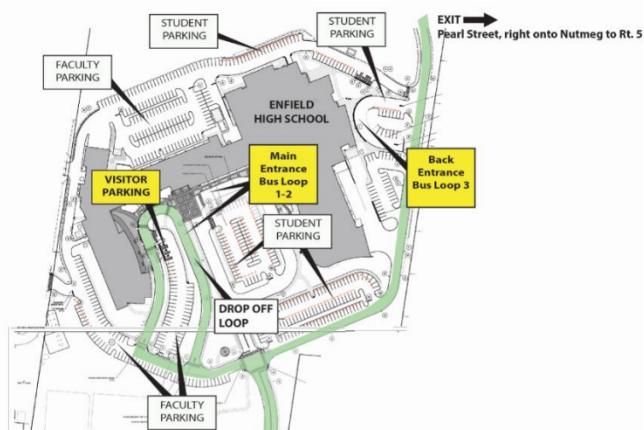
What if there is an urgent need to contact my child during the day?

If there is an urgent concern, you can call your dean's secretary or the main office. We will then call the classroom to reach your child.

Morning & Afternoon Drop-Off

The doors to the building open at precisely 7:10 a.m. Students must be in class by 7:26 a.m. to avoid being marked tardy. The parent drop-off loop is at the front of the building adjacent to the Fermi STEAM wing (if you are facing the main entrance, it is to the left). Only buses are permitted to use the bus drop-off loop until 7:15 a.m. Once the majority of buses have finished dropping off students, parents are welcome to use this loop as well. Please pull all the way to the main entrance to drop off students.

We ask that parents do not pick students up until 2:10 p.m. This allows our buses adequate time to safely pick up our students at the end of the day.



School Safety

School safety is a top priority at EHS. We are fortunate to have state-of-the-art security camera system and professional security personnel to assist in monitoring our building. One of the most powerful tools we have at our disposal is you! Please report any safety concerns to school administration. Please make sure that urgent concerns are made over the phone (and not in email where they may not be seen right away.) If there is a safety concern after school hours, call the Enfield Police Department.

Student Schedules

Schedules will be made available to students at the end of August. Freshmen will receive their schedules at orientation during their assigned orientation session. This will be either on Friday, August 19th or Monday, August 22nd. Students in grades 10-12 will be able to access their schedules on PowerSchool beginning on Monday, August 22nd.

Students with scheduling questions should contact their school counselor by email. Schedule change requests should be emailed to counselors, or students may set up an appointment to meet with their school counselor.



Important: Updating your student information

Keep a look out for a district email concerning the online Returning Student Annual Update for the upcoming 2022-2023 school year. This process replaces most of the paper forms sent home at the beginning of each school year that collect updated student, family, emergency, and medical information. In addition, you will be provided information on agreements and the opportunity to purchase iPad insurance. You will use the PowerSchool Parent Portal to access the forms. This information should be available prior to August 15th. Please review and update as soon as possible when it becomes available. For detailed instructions navigate to http://www.enfieldschools.org/parent_support/pspp

For technical support, email edtechhelp@enfieldschools.org.

Emergency Updates. EHS utilizes School Messenger for emergency updates, distributing school newsletters, and communicating important information. To make sure you are receiving these updates, visit the district website: https://www.enfieldschools.org/parent_support/school_messenger



Enfield High School

No Eagle Block Schedule



BLOCK		START TIME	END TIME
1		7:26	8:58
2		9:03	10:30
3		10:35	12:30
	Lunch 1	10:30	11:00
	Lunch 2	11:00	11:30
	Lunch 3	11:30	12:00
	Lunch 4	12:00	12:30
4		12:35	2:02

This schedule will be used primarily on the first day of each school week, and for special circumstances throughout the year.



Enfield High School

Eagle Block Schedule



BLOCK		START TIME	END TIME
1		7:26	8:45
2		8:50	10:06
3		10:11	12:06
	Lunch 1	10:06	10:36
	Lunch 2	10:36	11:06
	Lunch 3	11:06	11:36
	Lunch 4	11:36	12:06
Eagle		12:11	12:41
4		12:46	2:02

This schedule will be used Tuesday - Friday during a standard 5-day week. In cases where there is no school on a Monday, this schedule will run Wednesday - Friday.

Daily Schedule

On most weeks, Eagle Block will be held on each day of the week except for the first day. On the first day of the week students will use Enriching Students software to schedule themselves into a location for the rest of the week. Students should use Eagle Block to meet with teachers or join clubs.

Please note the first few weeks of school will look slightly different. This is to give us time to train students on using the software and to deliver important school-wide lessons.

First Month Schedule

Week 1: No Eagle Block Schedule

Week 2: Eagle Block Schedule, students report to mentoring location for school-wide lessons

Week 3: Standard Week (Students use software to select Eagle Block locations)

- Monday (9/12)-No Eagle Block
- Tues-Fri (9/13-16) Eagle Block

PARENT INVOLVEMENT

We want our parents and guardians to have a voice in our EHS community. Our Parent Advisory group meets multiple times per year and is open to all parents. Parents can join these meetings to weigh in on building-wide efforts, voice any concerns, or ask questions. At these meetings, have a chance to speak with building administrators and curriculum coordinators regarding various topics. You can register for Parent Advisory by accessing this link which can also be found on our website:

<https://forms.office.com/r/sAC70KGjSa>

Social and Emotional Supports

Resources are available to students who may be struggling with their mental health or challenging emotions. We encourage our students and parents to reach out to our staff. We have a variety of supports at EHS including our deans, school counselors, social workers, and licensed therapists that are housed in our pupil services office through our partnership with Community Health Center.

We want to remind you that it is critical that any immediate concerns be reported to school officials or the Enfield Police Department right away. Please do not rely on email for any immediate safety concerns. During school hours, please speak to any staff member. If you have any immediate safety concerns outside of school hours, please call 911. If you, or someone you know, is in crisis and needs help, please call 1(800)273-TALK (8255) or 211 in CT or text the Crisis Text Line: CT to 741741, and in an Emergency Call or Text 911.

We want to remind our students and families not to hesitate to reach out to the school if any student needs support.

The Enfield High School Mentoring Program

The mentoring program supports and fosters respectful and appropriate relationships among students and staff. It offers our student body the opportunity to engage in lesson content each month that supports peer-to-peer, student-to-teacher, and small group conversations on a variety of topics. The lesson topics are selected and designed in collaboration with student peer mentors and staff input. Lesson content supports academic and social and emotional learning topics such as mindfulness, respectful discourse, and school climate. Several lessons for this year will include a review of the new EHS school electronics policy which discusses the policy and how the change was made to support student engagement in the classroom. The lesson unveils the harmful impacts of cell phone use and supporting data and study findings. Another lesson addresses the importance of acknowledging and using correct pronouns to respect and learn about our backgrounds and differences. Many of the lessons have been adapted from Yale's RULER program which works to develop students' abilities to Recognize, Understand, Label, Express, and Regulate their emotions. If you have any questions about the mentoring program or would like to provide suggestions or feedback, please contact Patti Nelson at pnelson@enfieldschools.org.

Join a Club & Get Connected

At Enfield High, we pride ourselves on our many offerings of clubs and activities. Joining a club in school is one of the best ways to meet friends, have fun, and make stronger connections to the school as a whole. Our unique Eagle Block schedule allows us to schedule some club meetings during the school day, while others meet after school. We cover a wide variety of interests, from music, sports, art, world cultures, board games, and more! And if you have your own idea for a club, you can start your own! The list for clubs and activities will be available shortly after the start of the school year, but if you have any questions about clubs or activities, please reach out to Mr. Murray at mfmurray@enfieldschools.org. Visit our website early in the school year for more information on clubs: <https://enfieldhigh.sharpschool.com/activities/clubs>

Enfield High School Athletics

Anyone interested in participating in athletics this fall, please go to www.enfieldathletics.com for all requirements for tryouts including online registration instructions, athletic physical forms, and sport specific information.

If there are any questions, please feel free to reach out to our athletic department at 860-263-6524.

First Day of School is Aug 30th!

School starts promptly at 7:26 a.m.

While we appreciate students staying home when they are ill, we know that good attendance is an important predictor of achievement. Please be sure that your student is here and on-time for the first day of school, August 30th.

If your child is absent, please remember to call the office and send any required documentation to school (doctor's notes, etc.).

Remember to call the Dean's office if your child will be absent:

Grade 9, Mrs. Evans: 860-253-5547

Grade 10, Mrs. Parkman: 860-763-8822

Grade 11, Mrs. Smith: 860-763-8801

Grade 12, Mrs. Aikins: 860-763-8802

All EHS students will be receiving new iPads this year! To receive a new iPad, all students will have to return their old iPads and chargers. The collection and distribution schedule is outlined here. For any student who is unable to attend their assigned collection/distribution date, we will collect old iPads and distribute new devices during week 2 of school. We strongly suggest that you purchase insurance for your new iPad when you receive it. To do this, you can bring a check for \$25 made out to "Enfield Public Schools".

► **New iPad Distribution**

Friday 8/19	Monday 8/22	Tuesday 8/23	Wednesday 8/24	Friday 8/26
Grade 9 Freshmen Orientation:	Grade 9 Freshmen Orientation:	Grade 12 Seniors:	Grade 10 Sophomores:	Grade 11 & 12 Juniors and Seniors:
Freshmen Last Names A-L	Freshmen Last Names M-Z	Outside of EHS Auditorium	Outside of EHS Auditorium	Outside of EHS Auditorium
7:26AM-11:30AM	7:26AM-11:30AM	12:00PM-2:00PM	12:00pm-2:00pm	12:00pm-2:00pm

Equity & Inclusion. EHS remains committed to promoting racial equity and an inclusive environment. We are proud of the work our Equity Team has done to review curriculum, instruction, and building practices. The purpose of our equity work is to create an environment where everyone feels cared for, welcomed, respected, supported, and valued. The Equity Team has led efforts to engage our staff in "Courageous Conversations" about race and professional learning to build awareness of inequities and opportunity gaps. Our curricular work includes efforts to ensure our coursework includes texts and content that reflects multiple perspectives and is representative of our student body. Since 2019, we offer all students the opportunity to participate in Civil Discourse Circles to discuss issues related to race, culture, and equity. Interested students will again have the opportunity to sign up for these sessions led by trained facilitators in 2022-2023. Additionally, we know that empowering the voices of our parents and community members is an integral component of our work. Parents are invited to attend parent meetings with our Equity Team and can sign up to attend meetings by using the Equity Team website: https://enfieldhigh.sharpschool.com/administration/equity_team

Important reminders for students

We have a few reminders regarding behavior expectations for our students:

- **No Food Deliveries.** Students should arrive to school with their lunches or purchase lunch in our school cafeteria.
- **Be on time!** School begins at 7:26AM. Excessive tardiness can lead to loss of credit in a course.
- **Food and drink are not permitted** in the halls or classrooms. They are only permitted in the cafeteria and other spaces designated as approved eating areas.
- **Loitering in the bathrooms is not permitted.** If all stalls are being utilized, students are required to wait outside the bathroom.
- **Follow the dress code.** Students should note that they WILL NOT be permitted to wear clothes that expose their bare stomachs or backs. Please consult our student handbook to view our student dress code in its entirety.

ENFIELD HIGH SCHOOL



Eagle Expectations

EHS Eagles are:

- **PERSISTENT** when challenged
- **READY** for learning
- **INCLUSIVE** of others
- **DRIVEN** to excel
- **EMOTIONALLY** intelligent

EHS students follow the expected student protocols:

- Be kind to others.
- Be on time for class.
- **WALK**, stay to the **RIGHT** in hallways and stairwells.
- Use appropriate, respectful language.
- Cell phone and personal devices away in the classroom.
- Follow staff directions.
- Use designated restrooms with a teacher pass.
- Keep your hands to yourself.
- Clean up after yourself.
- Follow the dress code.
- Follow safety protocols.

IMPORTANT DATES

- Aug 19-**Freshman Orientation** (Last names A-L) 7:26-11:30AM
- Aug 22-**Freshman Orientation** (Last names M-Z) 7:26-11:30AM
- Aug 23-**Senior Parking Pass Registration** (12PM-2PM)
- Aug 26-**Senior & Junior Parking Pass Registration** (12PM-2PM)
- Aug 19-26-**iPad Distribution** (see calendar above)
- Aug 30-**First day of school/ A-Day** (Be there at 7:26AM!)
- Aug 31-**Second day of school/ B-Day**
- Sept 2-**Picture Day**
- Sept 22- **Open House** (6:30-8:30)
- Oct 12- **PSAT**
- Oct 20-22-**Homecoming Week 2022**

Contact Information

<p>EHS Administration</p> <p><u>Ms. Erin Clark</u> Principal eclark@enfieldschools.org 860-763-8804</p> <p><u>Mr. Connell Clark</u> Assistant Principal, Grades 10 & 11 cclark@enfieldschools.org 860-253-5549</p> <p><u>Mrs. Laura Gagnon</u> Assistant Principal, Grades 9 & 12 lgagnon@enfieldschools.org 860-763-8849</p> <p><u>Dave White</u> School Counseling Coordinator 860-253-6595</p> <p><u>Cory O'Connell</u> Athletic Director 860-263-6524</p>

All staff emails can be found on our school website:
https://enfieldhigh.sharpschool.com/staff_contacts

<p>Dean of Students</p> <p><u>Cory Rewenko</u> Dean of Students, Grade 9 crewenko@enfieldschools.org 860-763-8811</p> <p><u>Matthew Murray</u> Dean of Students, Grade 10 mfmurray@enfieldschools.org 860-763-8835</p> <p><u>Brenda Niemitz</u> Dean of Students, Grade 11 bniemitz@enfieldschools.org 860-763-8807</p> <p><u>Patti Nelson</u> Dean of Students, Grade 12 pnelson@enfieldschools.org 860-763-8839</p>

Who to contact?
Your school counselor or grade-level dean of students is a great first point of contact. We are all here to help!

Last Names	School Counselor
A-CEC	Elaine Helberg ehelberg@enfieldschools.org 860-253-5553
CED-FOR	Heather Aselton haselton@enfieldschools.org 860-763-8824
FOS-LAG	Amy Dunphy (Ellen Frost) adunphy@enfieldschools.org 860-763-8826
LAH-NEM	Ryan Carlson rcarlson@enfieldschools.org 860-763-8825
NEN-SEM	Frank Genovese fgenovese@enfieldschools.org 860-253-5321
SEN-Z	Lauren Jefferson ljefferson@enfieldschools.org 860-253-5552



Enfield High School empowers our students to be respectful and responsible citizens who are college and career ready. Meaningful and challenging learning experiences enable students to become critical thinkers, creative problem solvers, and effective communicators. Our school community supports the social and emotional development of students and encourages the exploration of their interests and talents.



Website:
<https://enfieldhigh.sharpschool.com/>



Contact:
860-253-5541



Follow us on Twitter & Instagram:
@EnfieldHS1