



Tecton
ARCHITECTS

PK-5 ELEMENTARY SCHOOLS & EAGLE ACADEMY THERAPEUTIC DAY SCHOOL

ENFIELD, CT

PRE-REFERENDUM BUILDING COMMITTEE MEETING

10.29.2025

As presented at the Pre-Referendum Building Committee meeting on October 23, 2024. All information contained herein is subject to change as further planning and refinements are developed.

Draft Print
This drawing is a preliminary design and is not to be used for construction. It is subject to change without notice. All rights reserved. © 2025 Tecton Architects.

AGENDA

a. Update on Design Team Activities

- a. Community Conversation No.1 – 10/22/2025
- b. Continue refining planning Options
- c. Preparation of Q&A list

b. Review Refined/Preferred Options

- a. Summarize/Recap Benefits & Challenges (from last meeting)
- b. Additional discussion. Comments and questions
- c. Activity – if 3 or 4, where, how, logistics and schedule
- d. Review detailed program(s)
 - i. Pk-5, Eagle Academy
 - ii. Possible special legislation for space waivers and timing

Main Focus!

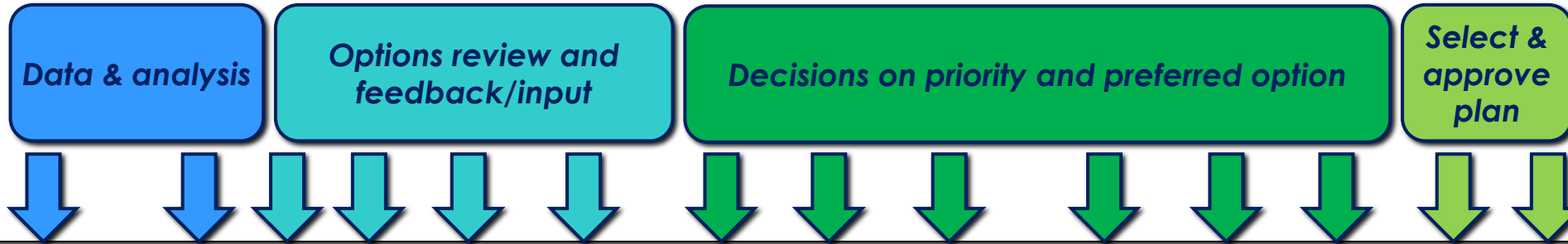
c. Community Engagement/Communications

- a. Update from CC#1 and Feedback
- b. Review Menti-meter/survey results
- c. FAQ's
- d. Finalize a date for the November Think Tank (Currently scheduled ~ 11/12/2025)
- e. Other engagement efforts - Collect list of events
- f. CC#2 – December 17th, Virtual – Initial comments and thoughts

d. Next Steps

- 1. Demographic Discussion ~ 11/19 PRC Meeting
- 2. Cost Modeling and Cash Flow Discussion
- 3. Follow up meeting with Town Stowe ELC programs
- 4. Refine Eagle Academy program/needs
- 5. Other requests

PROPOSED MILESTONE SCHEDULE



Enfield Public Schools - PK-5 & Eagle Academy Pre-Referendum Study (Revised 8/12/2025)

Working & Milestone Schedule	2025												2026																											
	July			August			September			October			November			December			January			February			March															
	6/30	7/7	7/14	7/21	7/28	8/4	8/11	8/18	8/25	9/1	9/8	9/15	9/22	9/29	10/6	10/13	10/20	10/27	11/3	11/10	11/17	11/24	12/1	12/8	12/15	12/22	12/29	1/5	1/12	1/19	1/26	2/2	2/9	2/16	2/23	3/2	3/9	3/16	3/23	3/30
Enfield PK-5 & Eagle Academy Pre-Ref. Building Committee Meetings	7/2				7/30		8/13		8/27				9/17			10/8		10/29			11/19			12/10			1/7			1/28			2/18			3/11			4/1	
Existing Facilities ~ Data Collection & Analysis	Existing Facilities ~ Data Collection & Analysis																																							
Infrastructure Assessment - Walkthroughs, analysis, report				7/22, 7/24-25																																				
Review Demographic & Enrollment Analysis																																								
Programming & Needs Assessment																																								
Capacity & Benchmarking - Core spaces, Usable area, State standards																																								
Programming Workshops - Space Needs, Utilization & Equity, "Think Tank" Events																																								
Space Program Summary - Recap existing data, Summarize new findings																																								
Options Development																																								
Develop series of Options (Pros, cons, budget, schedule)																																								
Refine preferred Options (based upon community/board input)																																								
Finalize the Preferred Option																																								
Finalize Preferred Option (Concepts, Scope, Schedule and Costs)																																								
Finalize Capital Improvement Plan																																								
Develop Final Report & Plan																																								
Present Final Report																																								
Community Engagement & Communications Plan																																								
Press release & issue public participation calendar																																								
Existing Building Tours, Videos and Presentations																																								
Community Conversation No.1 ~ Conditions, Utilization & Thinking Big!																																								
Community Conversation No.2 ~ Initial Options & Feedback																																								
Community Conversation No.3 ~ Finalizing the Plan & Next Steps																																								
Board of Education Meetings ~ (For information & reference purposes only)																																								
Town Council Meetings ~ (For information & reference purposes only)																																								
Proposed Possible Joint Meeting Presentation (TC/BOE) - If desired																																								

As presented at the Pre-Referendum Building Committee meeting on October 29, 2025. All information contained herein is subject to change as further planning and refinements are developed.

Draft Print
 All information presented herein is in draft format for review and comment. It is intended to be released for public comment upon the approval of the Board of Education.



Tecton
ARCHITECTS

DESIGN TEAM ACTIVITIES

MEETINGS, PROGRAMMING, OPTIONS REVIEW

- a. *Community Conversation – 10/22/2025*
- b. *Preparation of Q&A list*
- c. *Continue refining planning Options*

Draft Print
10/22/2025 3:56:18 PM
All information contained herein is in draft form and is subject to change without notice. It is not intended for distribution outside the project team. Please do not disseminate or use this information for any other purpose.

As presented at the Pre-Referendum Building Committee meeting on October 23, 2024. All information contained herein is subject to change as further planning and refinements are developed.



Demographics
& Enrollment



Infrastructure
Assessment



Educational
Programming



Community
Engagement

PLANNING OPTIONS

MASTER PLAN

CAPITAL MAINTENANCE PLAN
LONG RANGE MAJOR PROJECTS

A roadmap for the
district for generations

Do Not Print
All information contained herein is subject to change as further planning and refinements are developed.



1953

Enfield Street
Opens

1956

Hazardville Memorial
Addition

1954

Hazardville Memorial
Opens

1964

Henry Barnard
Opens
Edgar H. Parkman
Opens

1967

Eli Whitney
Opens

1968

Barnard
Admin Wing Addition

1966

Prudence Crandall
Opens

1963

H.B. Stowe
Opens
Enfield Street
Addition

2002

Library, gyms, computer tech room and
K classrooms at:

- Henry Barnard
- Prudence Crandall
- Enfield Street
- Hazardville Memorial
- H. B. Stowe
- Edgar H. Parkman
- Eli Whitney

2013

Full Day K

2016

Stowe ELC
Integrated PK

2011

Restructured to
K-2 / 3-5

2019

Stowe ELC
Head Start
Integration

2015

Stowe ELC
PK STEAM Academy

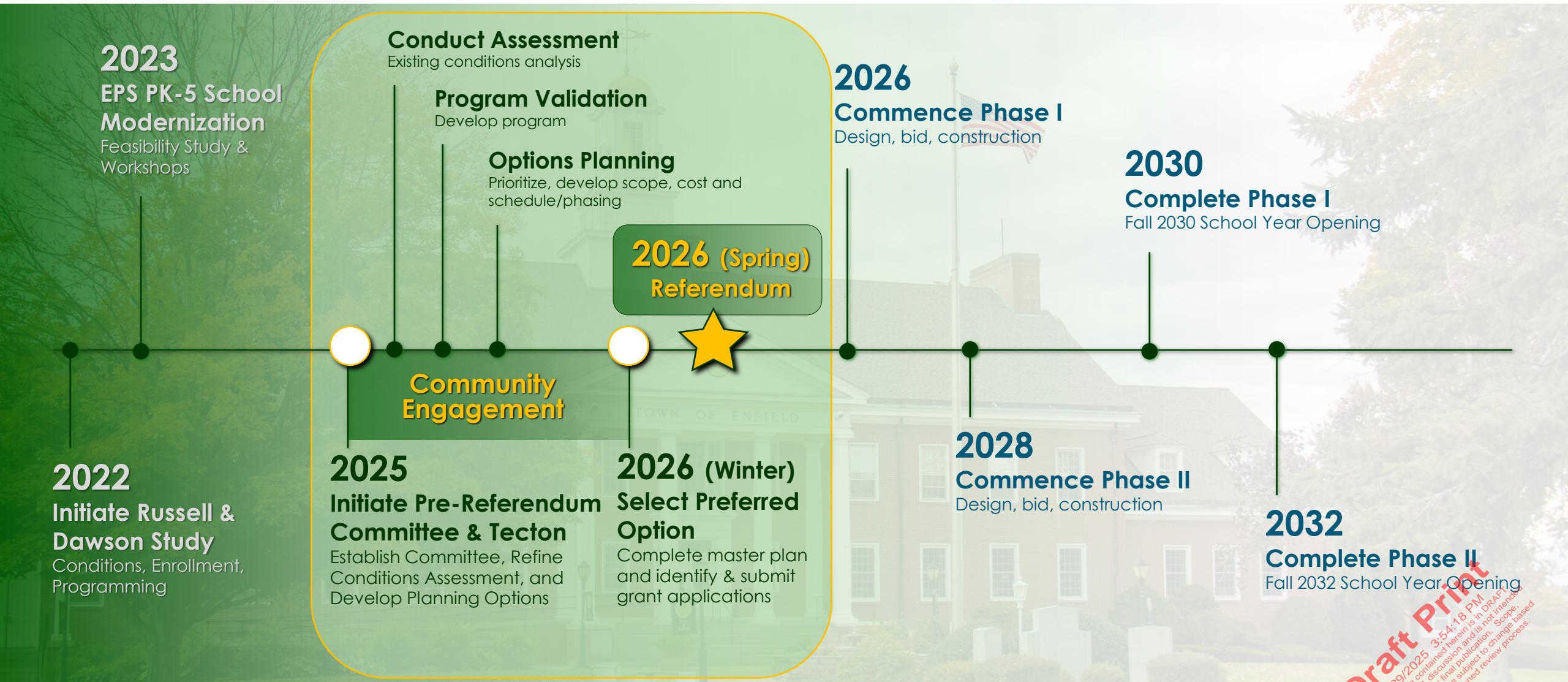
Draft Print
10/29/2025 3:54:18 PM
All information contained herein is in DRAFT
format for review & discussion and is not intended
to be released for final publication. Scope,
schedule and costs are subject to change based
upon the aforementioned review process.

“We make a difference in Enfield – every child, every day”

As presented at the Pre-Referendum Building

Committee meeting on October 29, 2025. All

information contained herein is subject to change as
further planning and refinements are developed.



As presented at the Pre-Referendum Building Committee meeting on October 29, 2025. All information contained herein is subject to change as further planning and refinements are developed.

“We make a difference in Enfield – every child, every day”

Draft Print
10/29/2025 3:54:18 PM
All information contained herein is in DRAFT format for review & discussion and is not intended to be released for final publication. Scope, schedule and costs are subject to change based upon the aforementioned review process.

CC#1 RECAP | FEEDBACK, THOUGHTS, CONSIDERATIONS



TONIGHT'S AGENDA

Start: 6:00PM

What are the schools like today?

Review Existing Conditions

10 min

Where do we go from here?

Share Feedback Received

10 min

How can I stay connected?

Where do we go from here?

Discuss Initial Options Plan

10 min

30+ min **Interactive Questions & Discussion**

End: 7:00PM

YOUR SCHOOLS...CONDITIONS DASHBOARD

Traffic & Building Systems

HENRY BARNARD
Grades K-2

Building Envelope

HAZARDVILLE MEMORIAL
Grades K-2

No Secure Vestibule into Admin.

ENFIELD STREET
Grades K-2

Sharing & Maxed Out

STOWE ELC
Grade PRE-K

sinking soils & Unwanted Pests

PRUDENCE CRANDALL
Grades 3-5

Limited Outdoor Area

ELI WHITNEY
Grades 3-5

Growth of SPED & Accessibility

EDGAR PARKMAN
Grades 3-5

No Room to Grow

EAGLE ACADEMY
Grades K-12

EXISTING CONDITIONS...TYPICAL FINDINGS ACROSS THE DISTRICT

1 Falling Window Seals

2 Deteriorating Brick Facade

3 Water Infiltration to Gym

4 Damage at Wood Soffits

5 Nests Built in Windows

6 Brick Integrity/Deterioration

As presented at the Pre-Referendum Building Committee meeting on October 29, 2025. All information contained herein is subject to change as further planning and refinements are developed.

YOUR K-2 SCHOOLS...CONDITIONS DASHBOARD

HENRY BARNARD
Grades K-2

HAZARDVILLE MEMORIAL
Grades K-2

ENFIELD STREET
Grades K-2

2 **Building Exterior (Facades & Windows) Past Useful Life**

EXISTING CONDITIONS...TYPICAL FINDINGS ACROSS THE DISTRICT

1 Falling Window Seals

2 Deteriorating Brick Facade

3 Water Infiltration to Gym

4 Damage at Wood Soffits

5 Nests Built in Windows

6 Brick Integrity/Deterioration

Draft Print
10/29/2025 3:54:18 PM
This information contained herein is preliminary and is not intended for review or dissemination and is not intended for publication. All information contained herein is subject to change as further planning and refinements are developed.



TONIGHT'S AGENDA

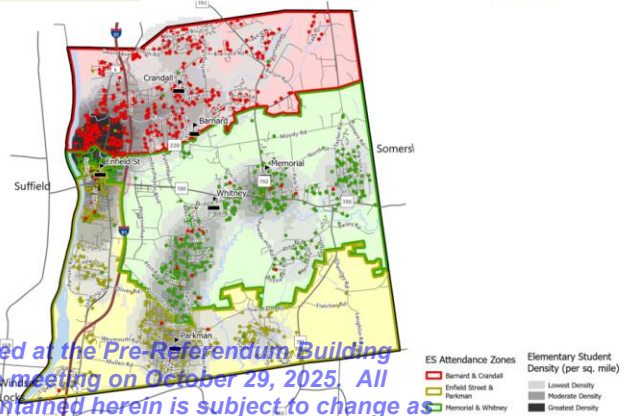
Start: 6:00PM



What are we trying to resolve?

- Reduce number of school transitions
- Equitable educational experience across district
- Resolve condition of existing buildings & sites
- Population growth & capacity...adjust attendance zones?
- Renovate or build new?
- Impact for entire community (student, parent, resident)
- Comprehensively address therapeutic program
- Strategy to house outplacement students in district
- Integrated plan for safety
- Incorporate outdoor learning opportunities

Would We Have To Redistrict?



As presented at the Pre-Referendum Building Committee meeting on October 29, 2025. All information contained herein is subject to change as further planning and refinements are developed.

Can We Build On Our Existing Sites?

STOWE EARLY LEARNING CTR 117 POST OFFICE ROAD	HENRY BARNARD SCHOOL 27 SHAKER ROAD	ENFIELD STREET SCHOOL 1318 ENFIELD STREET	HAZARDVILLE MEMORIAL 68 NORTH MAPLE STREET
Understanding your buildings ~ site capacity, buildable areas, utility infrastructure, ingress/egress, bus & parent drop off, building vintage(s), field & community use, adjacent properties, etc.			
PRUDENCE CRANDALL SCHOOL 150 BRAINARD ROAD	EDGAR H. PARKMAN SCHOOL 165 Weymouth Road	ELI WHITNEY SCHOOL 94 MIDDLE ROAD	EAGLE ACADEMY 1270 ENFIELD STREET

DEVELOPING THE OPTIONS / MAXIMIZE REIMBURSEMENT

Planning Options & State Reimbursement

68.33% New Construction 2026 (Updated August 2025)

70.00% General Construction 2026 (Updated August 2025)

- + 15% Early Childhood
- + 15% Special Education

Specific Requirements Apply

Discuss with OGA Comprehensive Approach

Maximum Allowable Areas

Limit Ineligibles, avoid reduction in reimbursement

New Construction Renovate as New Break/Fix (Non-Priority)

Incentives and/or review special legislation

Impact of recent non-priority roof projects (Barnard, Hazardville, Whitney)

Draft Print
 All information contained herein is in DRAFT format for review and publication and is not intended to be relied upon for any legal or other purpose. Subject to change based upon the alternative review process.

October 29, 2025 3:54:18 PM

CC#1 RECAP | FEEDBACK, THOUGHTS, CONSIDERATIONS



Community Conversation 1 10/22

- ① Demographics / Reimb / Allowable - Projected #'s? Where does the # get locked in?
 - ↳ 8 Actual yrs or Projected?
- ② Redistricting → why wouldn't we do that right away when we are building?
 - ↳ show timeline of how it unfolds
- ③ How did Simsbury go? what was the feedback from teachers and students?
- ④ Difference in the timespan btwn New + RNV

As presented at the Pre-Referendum Building Committee meeting on October 29, 2025. All information contained herein is subject to change as further planning and refinements are developed.

⑤ 15% on top? of what, how does it work?

- ↳ if half the building is SPED, how does that work

⑥ Are you trying to use existing space or open land? would prefer existing, or going up, vs building on raw land

⑦ Sustainability → green bldg mats energy - what reimbursement/incent to make more sustainable?

⑧ Does state reimb. rely on federal funding?

⑨ timestamp → key dates are the PK incentive only? Others Administration?

⑩ \$ for New vs RNV per SF

⑪ Durability of new constr. vs current buildings - held up well

Draft Print
10/29/2025 3:54:18 PM
All information contained herein is in DRAFT format for review & discussion and is not intended to be released for final publication. Scope, schedule and costs are subject to change based upon the aforementioned review process.



- 1. When does the grant reimbursement rate lock in?** *At the time/date of the grant submission, currently planned for submission prior to June 2026*
- 2. When does redistricting occur, why not do it now?** *Redistricting will likely occur at the conclusions of Phase I of the project, 2030 or 2032.*
- 3. How did Simsbury go (Renovate as New) ? What was the feedback from the teachers and students?** *Latimer Lane is a solid example of a Renovate as New. This project took approximately 30-36 months to complete and it was a phased, occupied renovation.*
- 4. What is the difference in length of construction for New compared to RNV?** *In most cases RNV is twice as long as new construction. A detailed analysis will be provided in future presentations.*
- 5. How does the 15% work with our base reimbursement?** *The 15% additional reimbursement is applied differently for Special Education versus Early learning centers, refer to the CC#1 slide deck for further detail.*
- 6. Are you trying to use existing space/land? Would prefer going up to preserve land as much as possible.** *Our strategy is to utilize existing properties where possible*

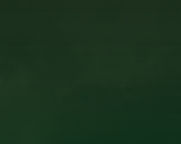
As presented versus vacant/greenfield sites.

Committee meeting on October 23, 2024. All information contained herein is subject to change as further planning and refinements are developed.

Draft Print
10/23/2024 3:54:18 PM
All information provided herein is in DRAFT form and is subject to change. It is not intended to be released for publication. Search, reuse, and create are prohibited in the review process.



- 7. What sustainable strategies are being considered?** *We have included cost premiums for geothermal wells, photo voltaic array, and enhanced energy efficient wall construction. The project is required to meet the CT High Performance Building Standard if a school construction grant is pursued.*
- 8. Does state school construction reimbursement rely on federal funding?** *Not to our knowledge.*
- 9. Are there key dates related to the PK/ELC incentive?** *There is no information related to when and if the 15% incentive reimbursement will expire. The passage was implemented in the spring of 2025 and will likely be temporary.*
- 10. Can you provide information on New versus Renovate as New cost/square foot?** *Yes, a cost comparison based upon historical averages and industry experience has been provided on the website.*
- 11. Can you speak to the durability of new construction versus renovation?** *The current cost modeling includes durable building materials and systems that have life cycles in the twenty-five-to-thirty-year timeframe while the structure itself will last for generations.*



Tecton
ARCHITECTS

OPTIONS PLANNING

ANALYSIS OF OPTIONS, PRIORITIZATION, PREFERRED OPTION DISCUSSION

As presented at the Pre-Referendum Building Committee meeting on October 23, 2024. All information contained herein is subject to change as further planning and refinements are developed.

Draft Print
10/23/2024 3:54:18 PM
All information contained herein is in draft form and is subject to change without notice. It is not intended for distribution outside of the Building Committee meeting process.

PLANNING OPTIONS...INITIAL DISCUSSION IS POSSIBLE



Preferred Option to date

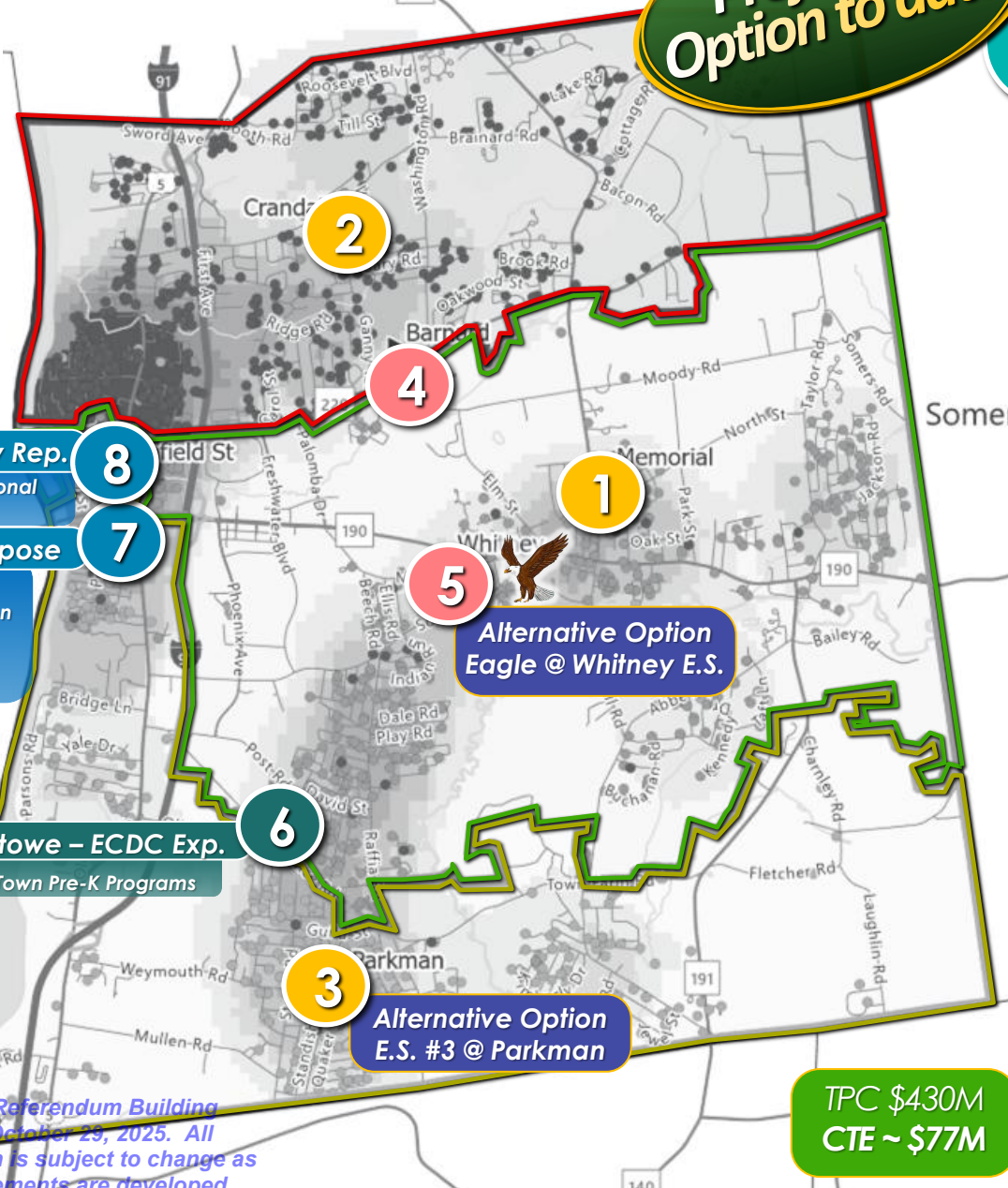
C1

ES Attendance Zones

- Barnard & Crandall
- Enfield Street & Parkman
- Memorial & Whitney

Elementary Student Density (per sq. mile)

- Lowest Density
- Moderate Density
- Greatest Density



8 Eagle Academy Rep.
ETLA (Enfield Transitional Learning Academy)

7 Enfield St. Repurpose
EPS Central Office
Alternative Education
Enfield Adult Ed.
Buzz Robotics
EHS Auxilliary Gym

6 Stowe – ECDC Exp.
Town Pre-K Programs

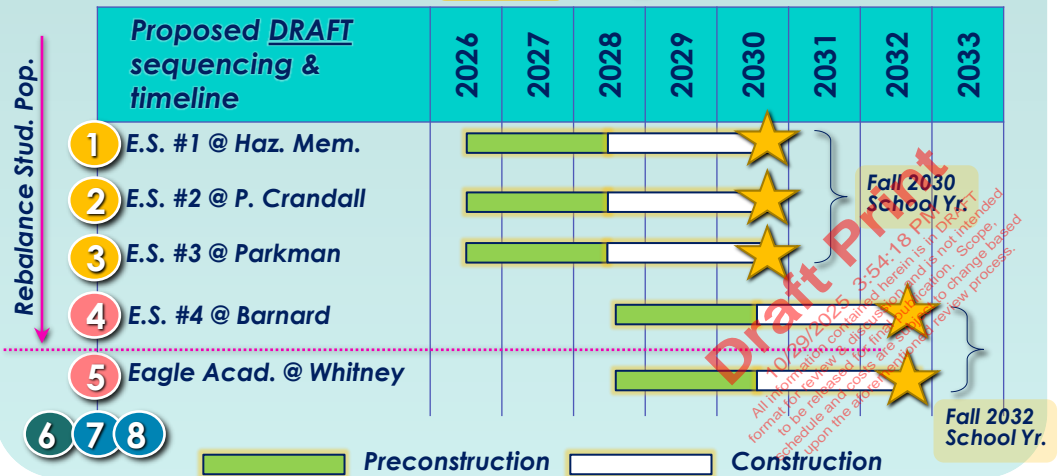
3 Alternative Option E.S. #3 @ Parkman

5 Alternative Option Eagle @ Whitney E.S.

**TPC \$430M
CTE ~ \$77M**

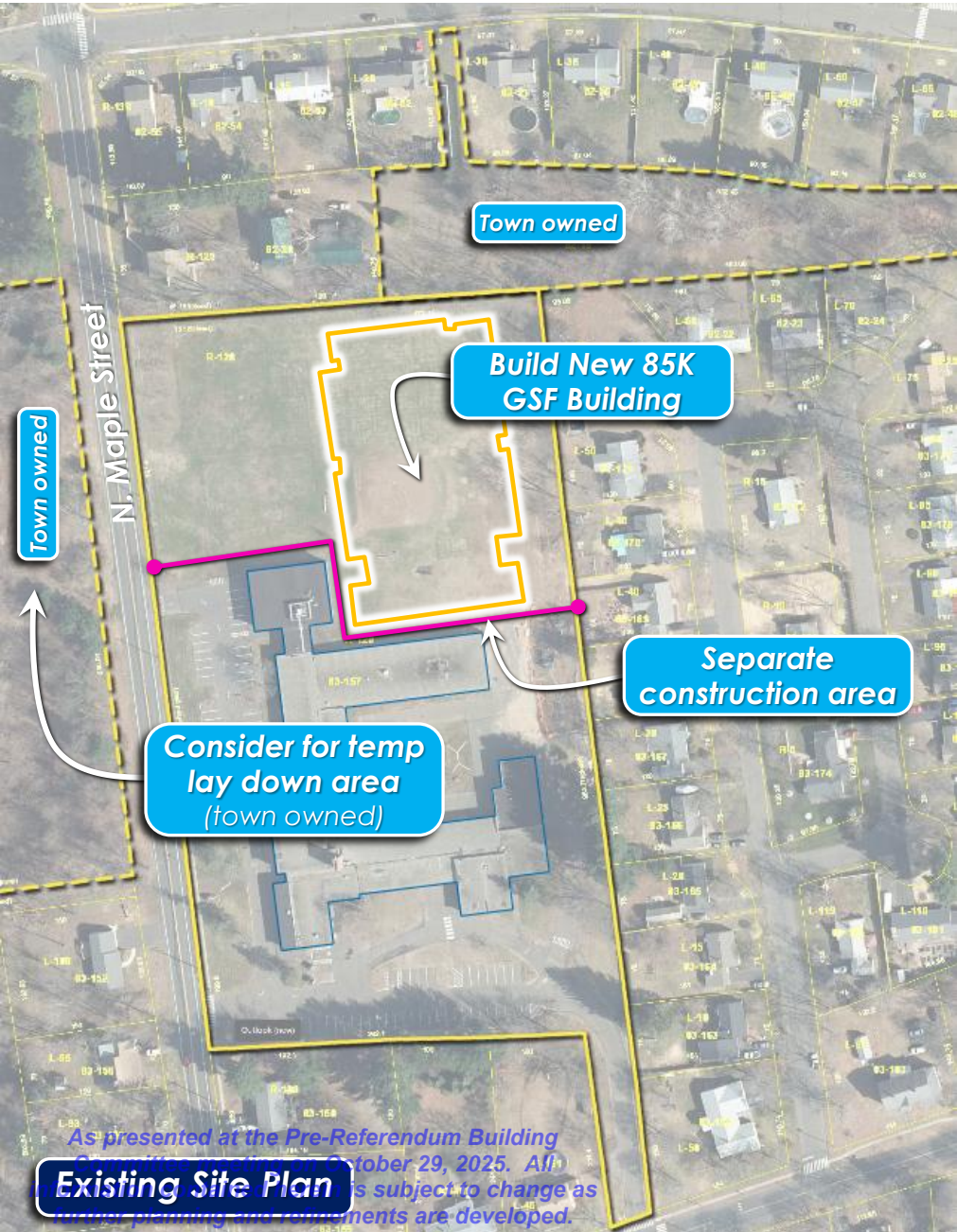
Four E.S. School Scenario “Optimize & Consolidate” + Eagle Academy

- 1 E.S. #1 @ Haz. Mem.**
G/L: PK-5
Stud.: 590-620P
Area: 85,000 GSF
Type: New/RNV
TPC \$91M
CTE ~ \$16M
- 2 E.S. #2 @ P. Crandall**
G/L: PK-5
Stud.: 590-620P
Area: 85,000 GSF
Type: New/RNV
TPC \$97M
CTE ~ \$17M
- 3 E.S. #3 @ Parkman**
G/L: PK-5
Stud.: 590-620P
Area: 85,000 GSF
Type: New/RNV
TPC \$98M
CTE ~ \$17M
- 4 E.S. #4 @ Barnard**
G/L: PK-5
Stud.: 590-620P
Area: 85,000 GSF
Type: New/RNV
TPC \$106M
CTE ~ \$19M
- 5 Eagle @ Whitney E.S.**
G/L: K-12
Stud.: 85-100P
Area: 55-60K GSF
Type: Renovation
TPC \$38M
CTE ~ \$8M
- 6 Stowe – ECDC Exp.**
- 7 Enfield St. Repurpose**
- 8 Eagle Academy Rep.**



As presented at the Pre-Referendum Building Committee meeting on October 29, 2025. All information contained herein is subject to change as further planning and refinements are developed.

PLANNING OPTIONS...INITIAL DISCUSSIONS...WHAT IS POSSIBLE



As presented at the Pre-Referendum Building Information Session on October 29, 2025. All information is subject to change as final planning and comments are developed.

Existing Site Plan



Concept Site Plan

C1

Four E.S. School Scenario "Optimize & Consolidate" + Eagle Academy

1 E.S. #1 @ Haz. Mem.

G/L:	PK-5
# Stud.:	590-620P
Area:	85,000 GSF
Type:	New/RNV

TPC \$91M
CTE ~\$16M

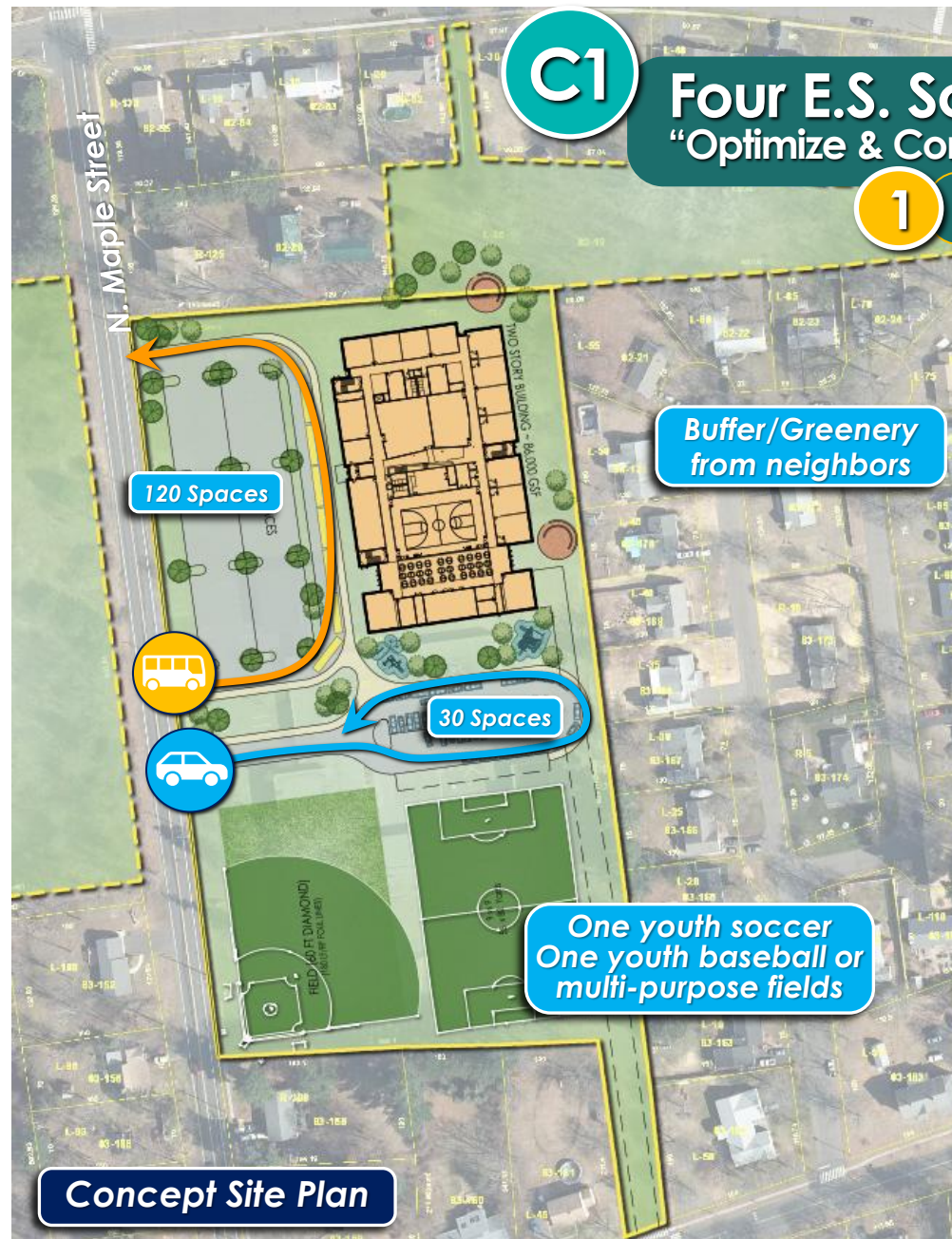
Buffer/Greenery from neighbors

Considerations

1. Safely separate construction from existing school operations
2. Utilize adjacent town owned property for parking/lay down during construction (temporary)
3. Separate bus and parent drop
4. Maintain & enhance fields
5. Preserve/Enhance buffer to existing residential

Do Not Print
All information presented herein is in Draft format for review & comment and is not intended to be released for construction. Scope, schedule and costs are estimates and may change based upon the aforementioned review process.

PLANNING OPTIONS...INITIAL DISCUSSIONS...WHAT IS POSSIBLE



C1 Four E.S. School Scenario "Optimize & Consolidate" + Eagle Academy

1 E.S. #1 @ Haz. Mem.

G/L:	PK-5
# Stud.:	590-620P
Area:	85,000 GSF
Type:	New/RNV

TPC \$91M
CTE ~\$16M

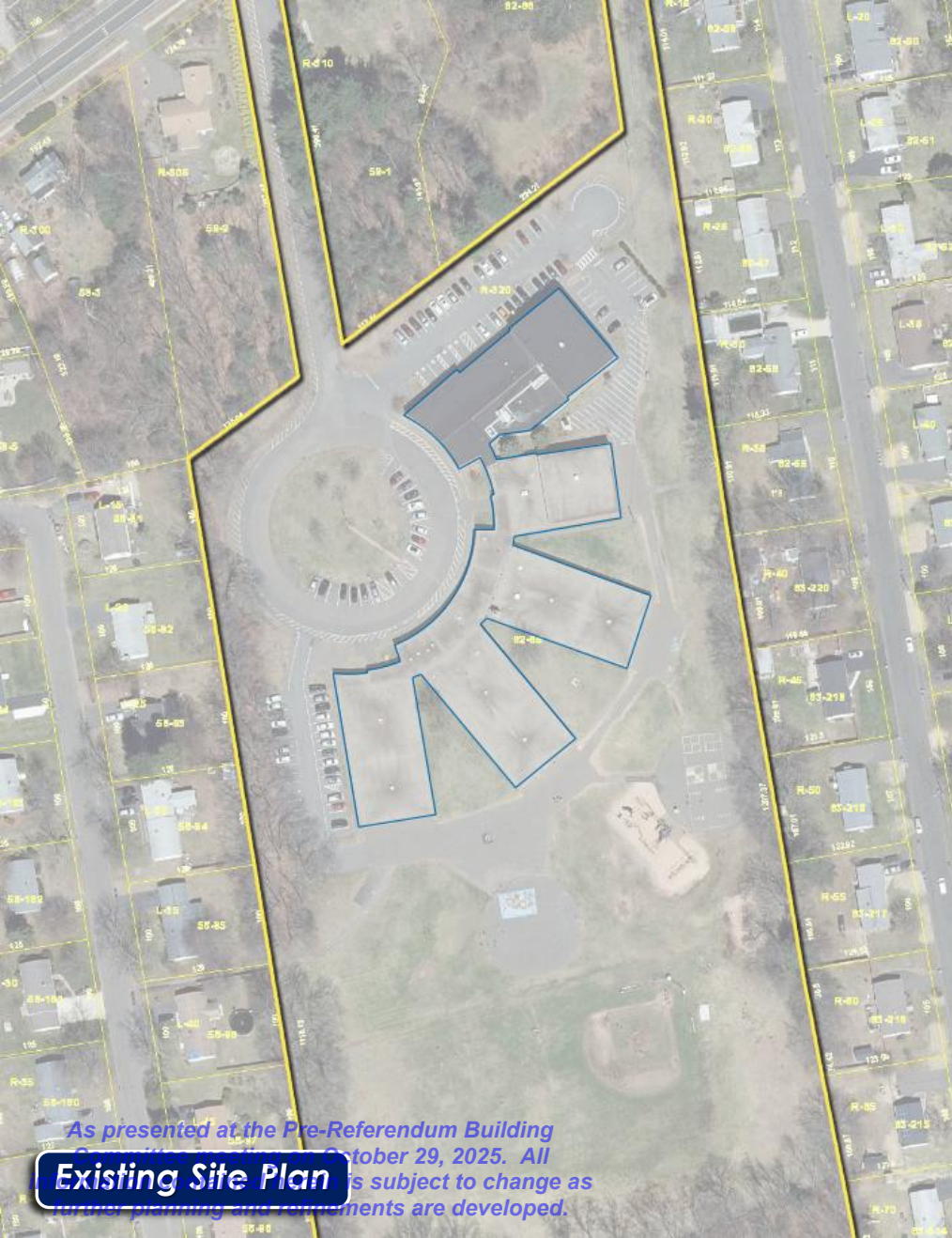
Considerations

1. Safely separate construction from existing school operations
2. Utilize adjacent town owned property for parking/lay down during construction (temporary)
3. Separate bus and parent drop
4. Maintain & enhance fields
5. Preserve/Enhance buffer to existing residential

All information contained herein is preliminary and is not intended to be released for construction. Scope, schedule and costs are subject to change based upon the aforementioned review process.

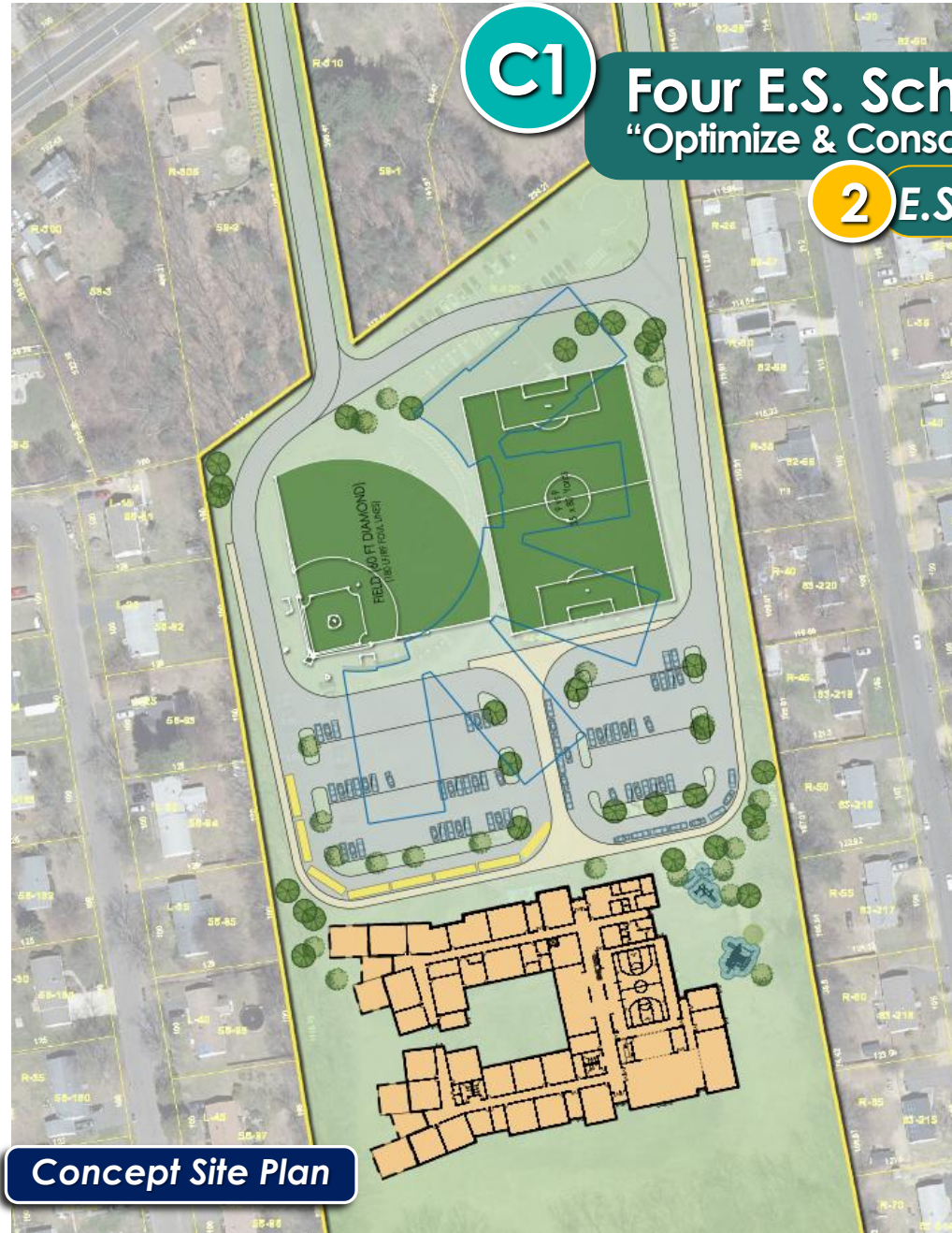
As presented at the Pre-Referendum Building October 29, 2025. All plans are subject to change as planning and comments are developed.

PLANNING OPTIONS...INITIAL DISCUSSIONS...WHAT IS POSSIBLE



As presented at the Pre-Referendum Building October 29, 2025. All plans are subject to change as final planning and commitments are developed.

Existing Site Plan



Concept Site Plan

C1

Four E.S. School Scenario "Optimize & Consolidate" + Eagle Academy

2 E.S. #2 @ P. Crandall

G/L: PK-5
Stud.: 590-620P
Area: 85,000 GSF
Type: New/RNV

TPC \$97M
CTE ~\$17M

Draft Print
10/29/2025 3:54:18 PM
All information contained herein is in DRAFT format for review & discussion and is not intended to be released for final publication. Scope, schedule and costs are subject to change based upon the aforementioned review process.



Tecton
ARCHITECTS

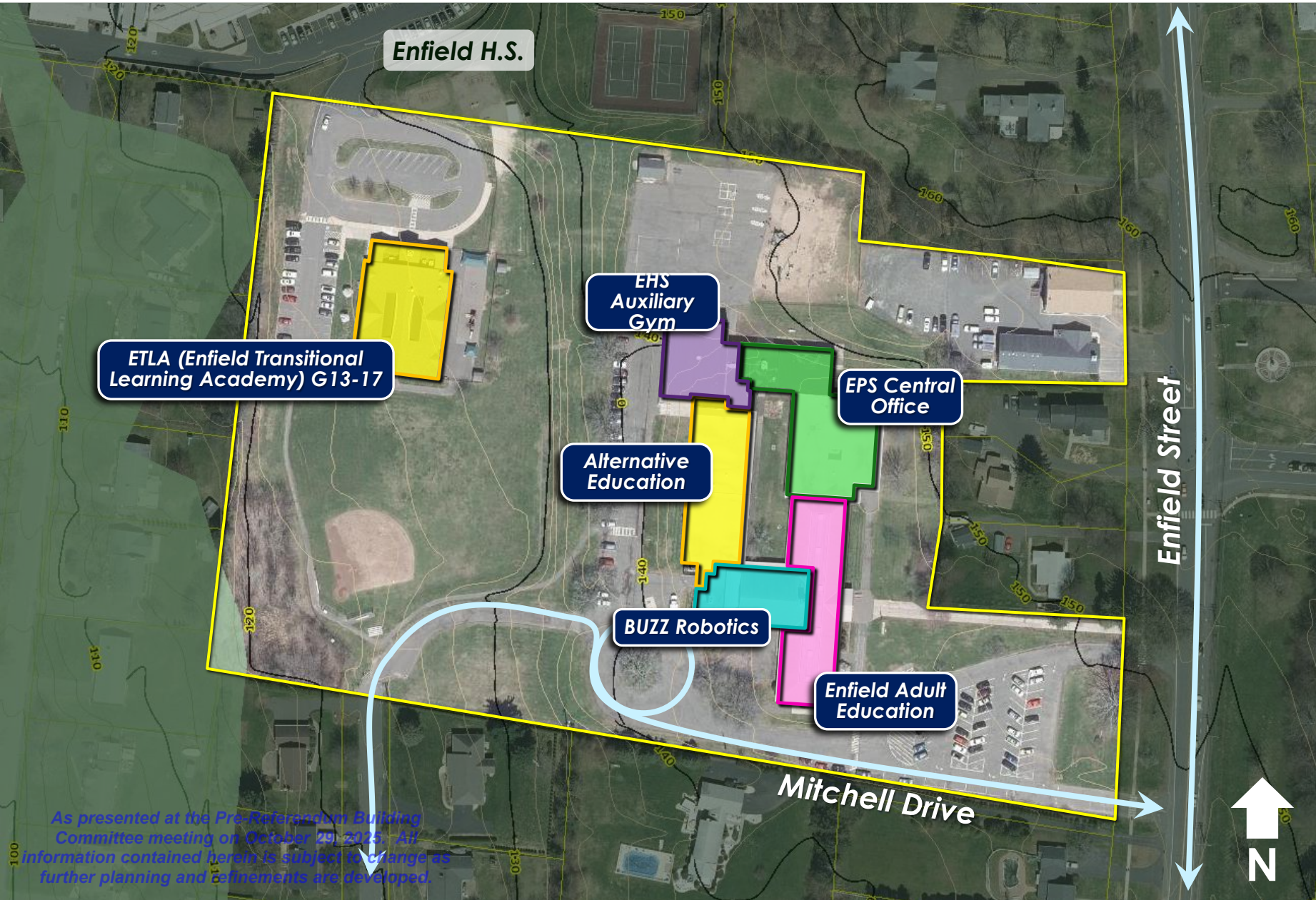
ADAPTIVE REUSE

A PLAN FOR ALL OF THE BUILDINGS...

As presented at the Pre-Referendum Building Committee meeting on October 23, 2024. All information contained herein is subject to change as further planning and refinements are developed.

Draft Print
10/23/2024 3:54:18 PM
All information contained herein is in draft form and is subject to change without notice. It is not intended for distribution outside of the project team.

PROPOSED ADAPTIVE REUSE | ENFIELD STREET SCHOOL



Proposed Adaptive Reuse

Existing Enfield Street School

1953 Original Construction
(35,838 SF)*
2001 Addition of Library & Gym (12,511 SF)*
Total Area: 48,349 GSF

Existing Eagle Academy

Total Area: 12,956 GSF

Site Area: 13.85 Acres

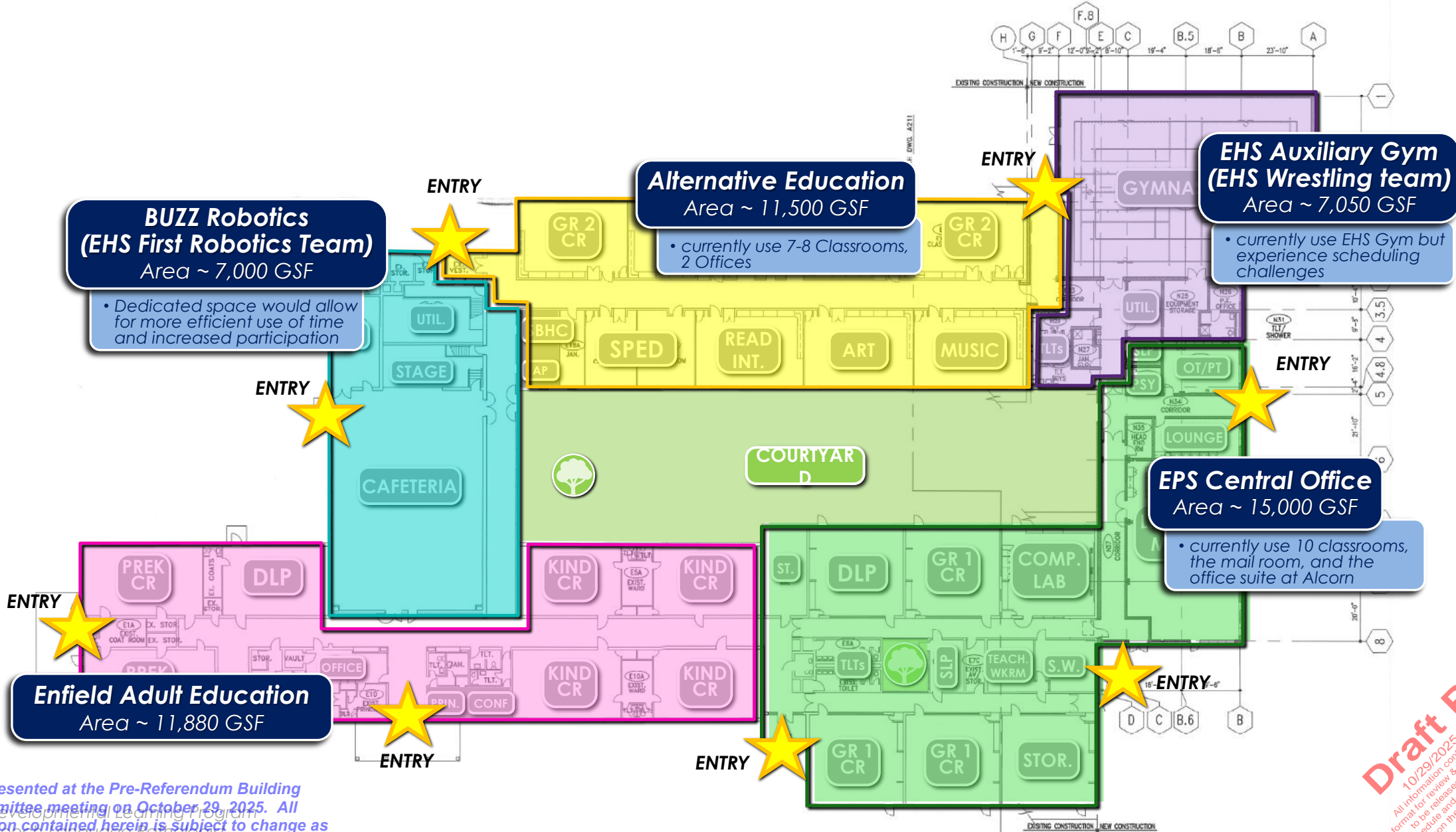
Benefits & Challenges

- Capacity to allocate suitable facilities for existing programs
- Allows for additional program/capacity at Alcorn
- Convenient site location
- Cost to relocate, address life safety & code, and infrastructure improvements (limited state reimbursement for C.O & Alt. Ed. programs)

As presented at the Pre-Referendum Building Committee meeting on October 29, 2025. All information contained herein is subject to change as further planning and refinements are developed.

*Data from Russell Dawson Existing Conditions Report

PROPOSED ADAPTIVE REUSE | ENFIELD STREET SCHOOL



BUZZ Robotics
(EHS First Robotics Team)
Area ~ 7,000 GSF

- Dedicated space would allow for more efficient use of time and increased participation

Alternative Education
Area ~ 11,500 GSF

- currently use 7-8 Classrooms, 2 Offices

EHS Auxiliary Gym
(EHS Wrestling team)
Area ~ 7,050 GSF

- currently use EHS Gym but experience scheduling challenges

EPS Central Office
Area ~ 15,000 GSF

- currently use 10 classrooms, the mail room, and the office suite at Alcorn

Enfield Adult Education
Area ~ 11,880 GSF

As presented at the Pre-Referendum Building Committee meeting on October 29, 2025. All information contained herein is subject to change as further planning and refinements are developed.

Draft Print
10/29/2025 3:54:18 PM
All information contained herein is in DRAFT format for review & discussion and is not intended to be released for final publication. Scope, schedule and costs are subject to change based upon the aforementioned review process.

ELI WHITNEY SCHOOL / 94 MIDDLE ROAD



EAGLE ACADEMY RELOCATION & RENOVATION



Town Fields

Enfield Public Library

General Notes:

1. Two or three outdoor areas needed, as similar as possible to have various groups outside simultaneously
2. Outdoor area for staff as well as students

DISCLAIMER: This information is for informational purposes only and is not intended to be a contract. It is subject to change without notice. All information contained herein is for informational purposes only and is not intended to be a contract. It is subject to change without notice. All information contained herein is for informational purposes only and is not intended to be a contract. It is subject to change without notice.

As presented at the Pre-Referendum Building Committee meeting on October 29, 2025. All information contained herein is subject to change as further planning and refinements are developed.



PLUS...
VOLLEYBALL
TENNIS
PICKLEBALL
BADMINTON

PROPOSED ADAPTIVE REUSE | ELI WHITNEY (3-5)



EAGLE ACADEMY RELOCATION & RENOVATION



General Notes:

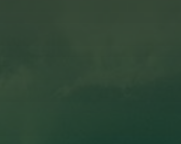
1. Classroom exterior doors to be re-examined with adaptive reuse.
2. Outdoor areas for recreation and learning to be age-appropriate.
3. Two entrances desired
4. Flex offices to allow for partner groups/organizations to meet privately with students & families
5. Staff room/teacher prep & break room needed
6. At least two Nurses staffed, maybe a separate health room in addition
7. Secure storage rooms near entry/Admin for phones and device storage

COLOR LEGEND

- CR CLASSROOM
- TA TIME ASIDE
- PO PAY OFF ROOM
- SS SCHOOL STORE
- SW SOCIAL WORKER
- Alt. W ALT. WORK AREA

Draft Print
 10/29/2025 3:54:18 PM
 Information contained herein is in DRAFT form for review & discussion and is not intended for construction. It is subject to change based upon the pre-referendum review process.

As presented at the Pre-Referendum Public Hearing Committee meeting on October 29, 2025. All information contained herein is subject to change as further planning and refinements are developed.



Tecton
ARCHITECTS

COMMUNITY ENGAGEMENT

COMMUNITY CONVERSATIONS, EVENTS, THINK TANKS, VIDEOS, SURVEYS

Draft Print
This document is a draft and is not for distribution.
All rights reserved. © 2024 Tecton Architects.

As presented at the Pre-Referendum Building Committee meeting on October 23, 2024. All information contained herein is subject to change as further planning and refinements are developed.

THINK TANK – COMING SOON!



What is a...
Think Tank?

Opportunity for a diverse group of teachers, staff, students, parents & board members to share programmatic insights as initial options are developed...



Enfield Public Schools
PK-5 Districtwide Master Plan

ENFIELD PUBLIC SCHOOLS
We make a difference in Enfield - every child, every day.

Tecton ARCHITECTS

You're Invited! Help us create the guiding principles for the master plan!

What is a... **Think Tank?**

An opportunity for a diverse, hand-selected group of teachers, students, parents, board members, and others to... **co-create the project's guiding principles** that will serve as a touchstone for decision-making moving forward!

Please join us for a Think Tank!
Share your bold goals and big-picture vision for the school district with us! Following a brief presentation, there will be break-out activities, and lots of fun! Please RSVP to John Dague - jdague@enfieldschools.org

Wed. 11/12 **THINK TANK - GRADES PK-5**
Location: Enfield Street School, Cafeteria
Time: 1:30pm - 3:30pm

Wed. 11/12 **THINK TANK - TOWN/COMMUNITY**
Location: Enfield Town Hall, Scitico Room
Time: 4:30pm - 6:00pm
(BY INVITE ONLY)

Any major projects from the Study Phase will continue the process of engagement and design!

STUDY PHASE	CONCEPTUAL DESIGN	SCHEMATIC DESIGN	DESIGN DEVELOPMENT	CONSTRUCTION DOCUMENTS	CONSTRUCTION
4-12 MONTHS	APPROX. 4-6 MONTHS	APPROX. 18-24 MONTHS			

COMMUNITY ENGAGEMENT STARTS IN THE STUDY PHASE AND CONTINUES THROUGH THE ENTIRE PROCESS!

Stay Connected!  Project website: https://www.enfieldschools.org/about/p_k-5_school_modernization

Draft Print
All info prior to 11/29/2025 3:54:18 PM
to be reviewed & approved by the Board of Education
Schedule and dates are subject to change based on the project process.

Think Tanks for Grades PK-5 & Town by Invite:

November 12 (tentative)

Details coming soon!

As presented at the Board of Education Building Committee meeting on October 29, 2025. All information contained herein is subject to change as further planning and refinements are developed.

OUR SURVEY OPENS SOON!



Your Voice Matters!
Share your feedback with us.

**Closes
December 5th!**

Survey Topic:

Identifying the Need, Vision and
Prioritization

Approximate time to complete: 5-8 minutes



Link to Survey

<https://www.menti.com/albg3dt8d5tw>

As presented at the Pre-Referendum Building Committee meeting on October 29, 2025. All information contained herein is subject to change as further planning and refinements are developed.

Enfield Public Schools
PUBLIC SCHOOLS
We make a difference in Enfield - every child, every day.

Tecton ARCHITECTS

PK-5 Districtwide Master Plan

Join us as we shape a future for Enfield Public Schools that prepares our students and our community for the challenges and opportunities ahead.
Your Voice Matters!

Upcoming Events:

- Community Conversation #1**
Wed. 10/22 6-7pm
JFK Middle School Auditorium
- Community Conversation #2**
Wed. 12/17 6-7pm
Virtual Zoom Meeting
Meeting ID: 899 2439 3105
Passcode: 209952
- Community Conversation #3**
Wed. 2/4 6-7pm
Enfield High School Auditorium

Please Take Our Survey:

Scan the code to get started

OR:
Visit this website
<https://www.menti.com/albg3dt8d5tw>

Please note: this survey will close on December 5th, and final data will be shared at Community Conversation #25.

Stay Connected!
Project website: https://www.enfieldschools.org/about/p_k-5_school_modernization
Project email: preref@enfieldschools.org

Draft Print
All information contained herein is in DRAFT form for review & discussion and is not intended to be released for final publication. Scope, schedule and cost are subject to change based upon this state's authorized review process.

COMMUNITY EVENTS



What is a...
Community
Conversation?

Opportunity for community members to share priorities as valued participants in the process!



Enfield Public Schools
PK-5 Districtwide Master Plan

About the Project

Enfield Public Schools, in collaboration with the Board of Education and the Town of Enfield, is exploring opportunities to make improvements at each of our elementary schools (PK, K-2 and 3-5) and the Eagle Academy Therapeutic Day School, in order to advance the goals of the district and enhance the educational experience for our students in Enfield.

Although well maintained, the average age of our elementary schools is 63 years old! Through this process, we will create the blueprint for Enfield's educational future - we invite you to join us in the conversation!

Upcoming Events

Community Conversation #1	Community Conversation #2	Community Conversation #3
Wed. 10/22 6-7pm	Wed. 12/17 6-7pm	Wed. 2/4 6-7pm
- Theme - Existing Conditions: What are the Schools Like Now?	- Theme - Initial Options - Virtual Q&A: Big-Picture Possibilities for the District	- Theme - Finalizing the Plan: Long-Term Vision and First Step
In-person at: JFK Middle School Auditorium	Join Zoom Meeting: Meeting ID: 899 2439 3105 Passcode: 209952	In-person at: Enfield High School Auditorium

Watch the Replay! All Community Conversations will also be recorded and posted to the project website.

Stay Connected! Project website: <https://www.enfieldschools.org/about/p-k-5-school-modernization>

Community Conversation #2 will be held on:

December 17

Theme: **Initial Options – Virtual Q&A**

Time: **6-7pm**

Location: **Zoom Meeting**

Meeting ID: **899 2439 3105**

Passcode: **209952**



As presented at the P&R Forum Building Committee meeting on October 29, 2025. All information contained herein is subject to change as further planning and refinements are developed.

Draft Print
10/29/2025
All information contained herein is in draft format for review & discussion. It is not to be released for final publication or use. Schedule and costs are subject to change upon the aforementioned review process.

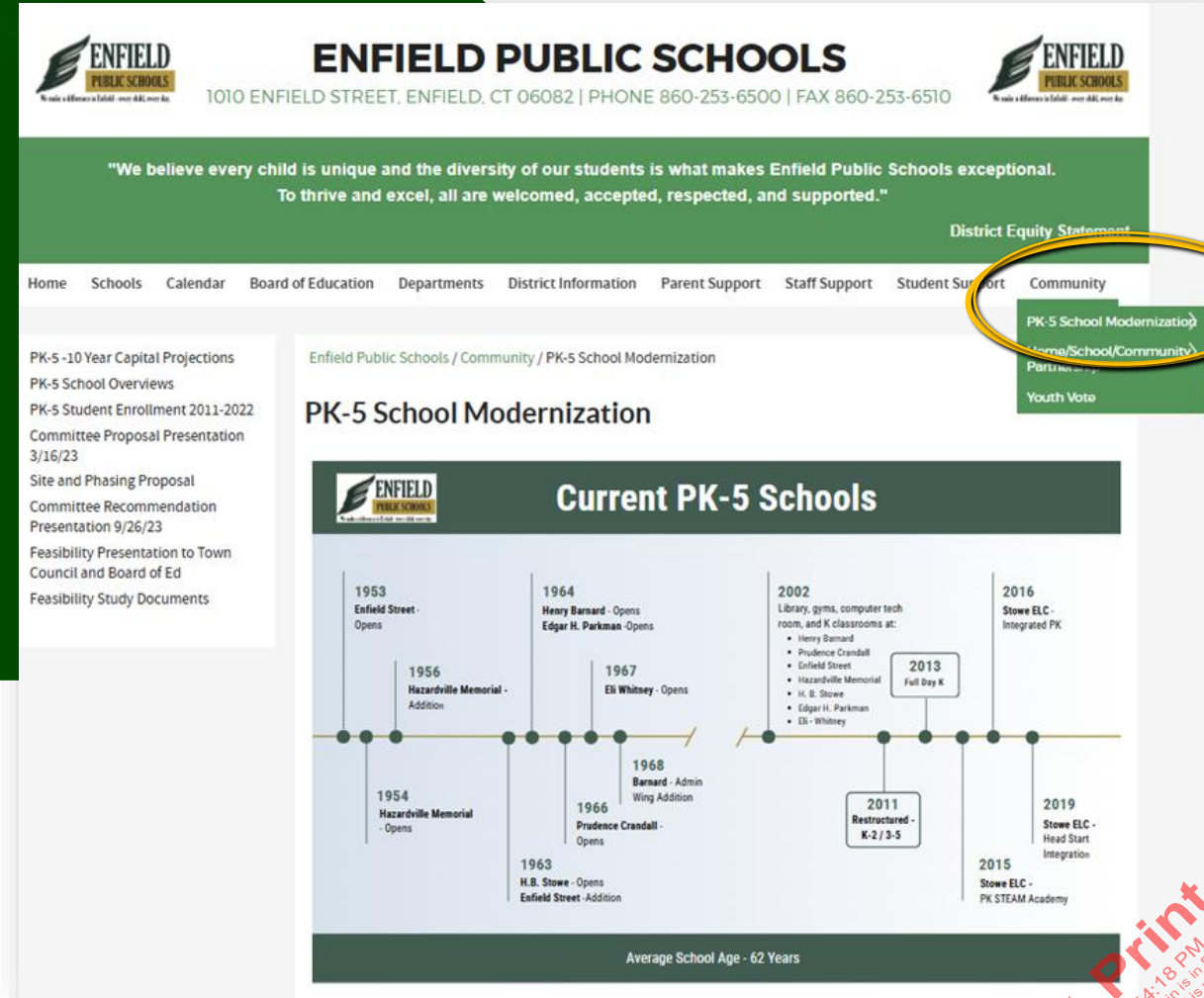
STAY CONNECTED



Check the project webpage for updates, presentations, documents or reports, and announcements!



 **SCAN ME**



ENFIELD PUBLIC SCHOOLS
1010 ENFIELD STREET, ENFIELD, CT 06082 | PHONE 860-253-6500 | FAX 860-253-6510

"We believe every child is unique and the diversity of our students is what makes Enfield Public Schools exceptional. To thrive and excel, all are welcomed, accepted, respected, and supported."

District Equity Statement

Home Schools Calendar Board of Education Departments District Information Parent Support Staff Support Student Support **Community**

PK-5 School Modernization
Home/School/Community
Participation
Youth Vote

PK-5 - 10 Year Capital Projections
PK-5 School Overviews
PK-5 Student Enrollment 2011-2022
Committee Proposal Presentation 3/16/23
Site and Phasing Proposal
Committee Recommendation Presentation 9/26/23
Feasibility Presentation to Town Council and Board of Ed
Feasibility Study Documents

Enfield Public Schools / Community / PK-5 School Modernization

PK-5 School Modernization

Current PK-5 Schools

Average School Age - 62 Years

Year	Event
1953	Enfield Street - Opens
1954	Hazardville Memorial - Opens
1956	Hazardville Memorial - Addition
1963	H.B. Stowe - Opens Enfield Street - Addition
1964	Henry Barnard - Opens Edgar H. Parkman - Opens
1966	Prudence Crandall - Opens
1967	Eli Whitney - Opens
1968	Barnard - Admin Wing Addition
2002	Library, gyms, computer tech room, and K classrooms at: • Henry Barnard • Prudence Crandall • Enfield Street • Hazardville Memorial • H. B. Stowe • Edgar H. Parkman • Eli - Whitney
2011	Restructured - K-2 / 3-5
2013	Full Day K
2015	Stowe ELC - PK STEAM Academy
2016	Stowe ELC - Integrated PK
2019	Stowe ELC - Head Start Integration



PROJECT EMAIL

preref@enfieldschools.org



VISIT THE WEBSITE

https://www.enfieldschools.org/about/p_k-5_school_modernization

Draft Print
10/29/2025 3:54:18 PM
All information contained herein is in DRAFT form. It is for discussion and is not intended to be used for final publication. Scope, schedule and other information are subject to change based upon the engineering and construction review process.

As presented at the Planning Building Committee meeting on October 23, 2025. All information contained herein is subject to change as further planning and refinements are developed.

1. Receive Demographics Report

- Distribute, Analyze, and Discuss
- Update student population, building size and costs for enrollment option selected

2. Coordination Meetings

- Cost Modeling and Cash Flow Discussion
- Follow up meeting with Town Stowe ELC programs
- Departments considered for the Adaptive Reuse?
- Communicate to Delegation regarding possible grant(s) & special legislation

3. Program Development

- Refine Eagle Academy program/needs – will require space waiver
- PK-4 School Model – space waiver TBD.

4. Community Interaction

- Solicit more respondents for Survey #1
- Develop Q&A for posting to website
- Collect and post presentations and data collected to website



Tecton
ARCHITECTS

PK-5 ELEMENTARY SCHOOLS & EAGLE ACADEMY THERAPEUTIC DAY SCHOOL

ENFIELD, CT

PRE-REFERENDUM BUILDING COMMITTEE MEETING

10.29.2025

As presented at the Pre-Referendum Building Committee meeting on October 23, 2024. All information contained herein is subject to change as further planning and refinements are developed.

Draft Print
This drawing is a preliminary design and is not to be used for construction. It is subject to change without notice. All rights reserved. © 2025 Tecton Architects.