

**Moniteau County Emergency Dispatch
Monthly Report**



August, 2021



Moniteau County Emergency Dispatch

Monthly Directors Report



Personnel	Current Staffing	Positions Available	Vacancies
Full Time	10		
Telecommunicators	7	10	3
Administration	3	3	0
Part Time	5		
Telecommunicators	3	3	0
Sign Installers	2	2	0

Training	Date	Attendance	Hours	Type
Conflict Resolution	Aug, 17	9	1	In Service
Domestic/ Home Invasion	August	7	1	Online

Projects	
Office Phone Voicemail indicator	In Progress
Greenwood Drive	In Progress Petition given to Commissioner 2/11
Training Manual Overhaul	In Progress
Base Station Replacement Plan	In Progress CMD1 - Included in 2021 Budget
Addressing Policies	Pending
Console Status Lights	Pending
NAWAS Phone	Pending CMD1
Highpoint Repeater	Pending Site Coverage Mapping - CMD1
Duplicate Intersections	Pending
Data Room	Pending
Board Training	Pending
ACE Application	Pending

Budget Snapshot	Current Month	Year to Date
Budget Revenue	\$69,583.33	\$556,666.64
Actual Revenue	\$85,534.65	\$702,788.65
Budget Expenditures	\$70,043.80	\$560,350.40
Actual Expenditures	\$67,438.69	\$480,109.31
Variance	\$18,095.96	\$222,679.34

Month at-a-glance	
1,341 Calls for Service Created (CAD)	
140 High Priority Calls	Average time to Dispatch HP CFS 01min 35sec
369 911 Answered	911 Average Ring Time 3.87sec
29 911 Abandoned	Quality Assurance Evaluations 170
0 911 Text Sessions	Average Monthly QA Score 97.17%
1,959 Admin/ Business calls - Inbound	Warrants Entered 31
821 Admin/ Business calls - Outbound	New Addresses Assigned 5

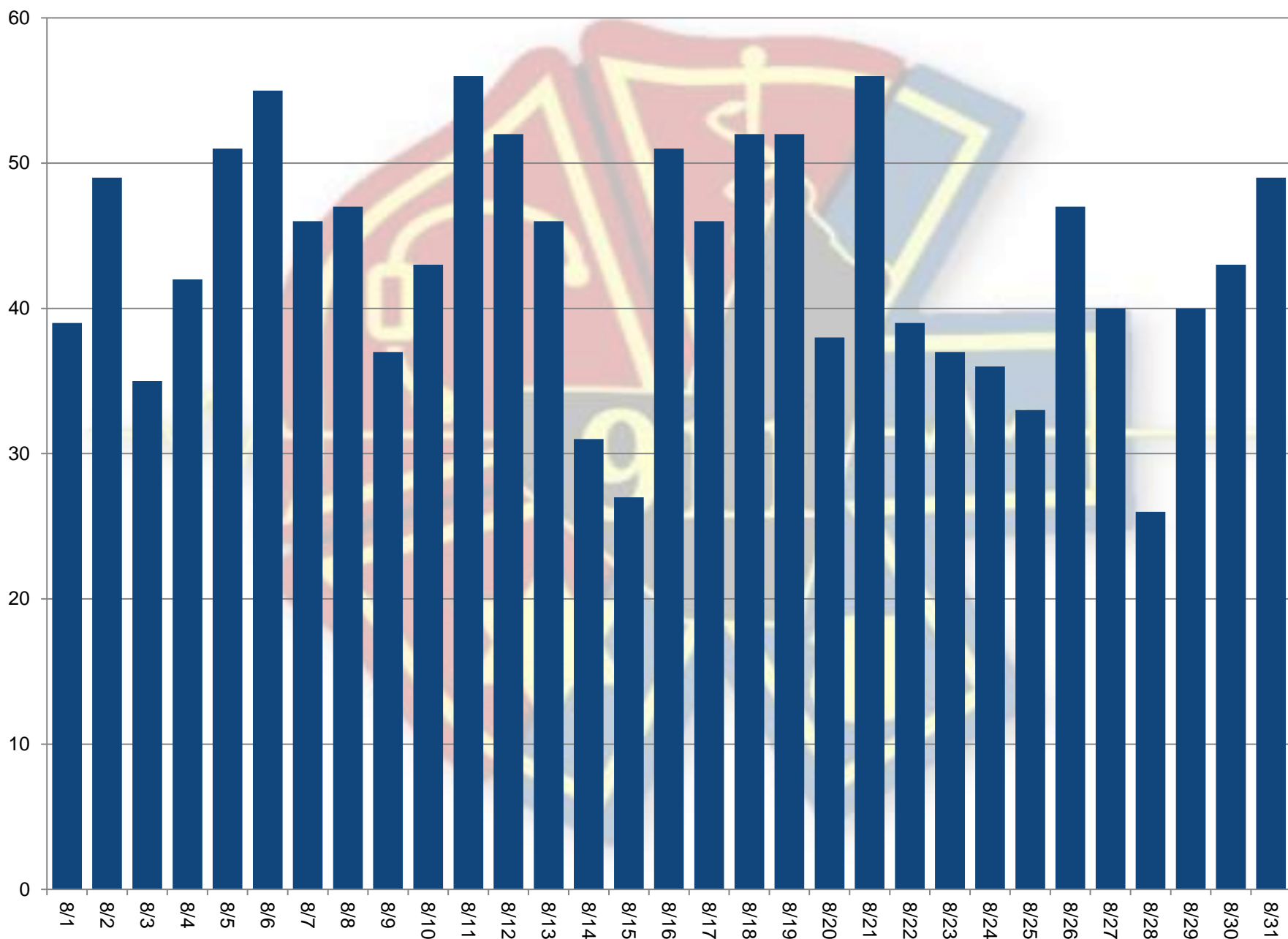


Moniteau County Emergency Dispatch

Monthly Report - Daily CAD Events



Date	#
8/1	39
8/2	49
8/3	35
8/4	42
8/5	51
8/6	55
8/7	46
8/8	47
8/9	37
8/10	43
8/11	56
8/12	52
8/13	46
8/14	31
8/15	27
8/16	51
8/17	46
8/18	52
8/19	52
8/20	38
8/21	56
8/22	39
8/23	37
8/24	36
8/25	33
8/26	47
8/27	40
8/28	26
8/29	40
8/30	43
8/31	49
1341	





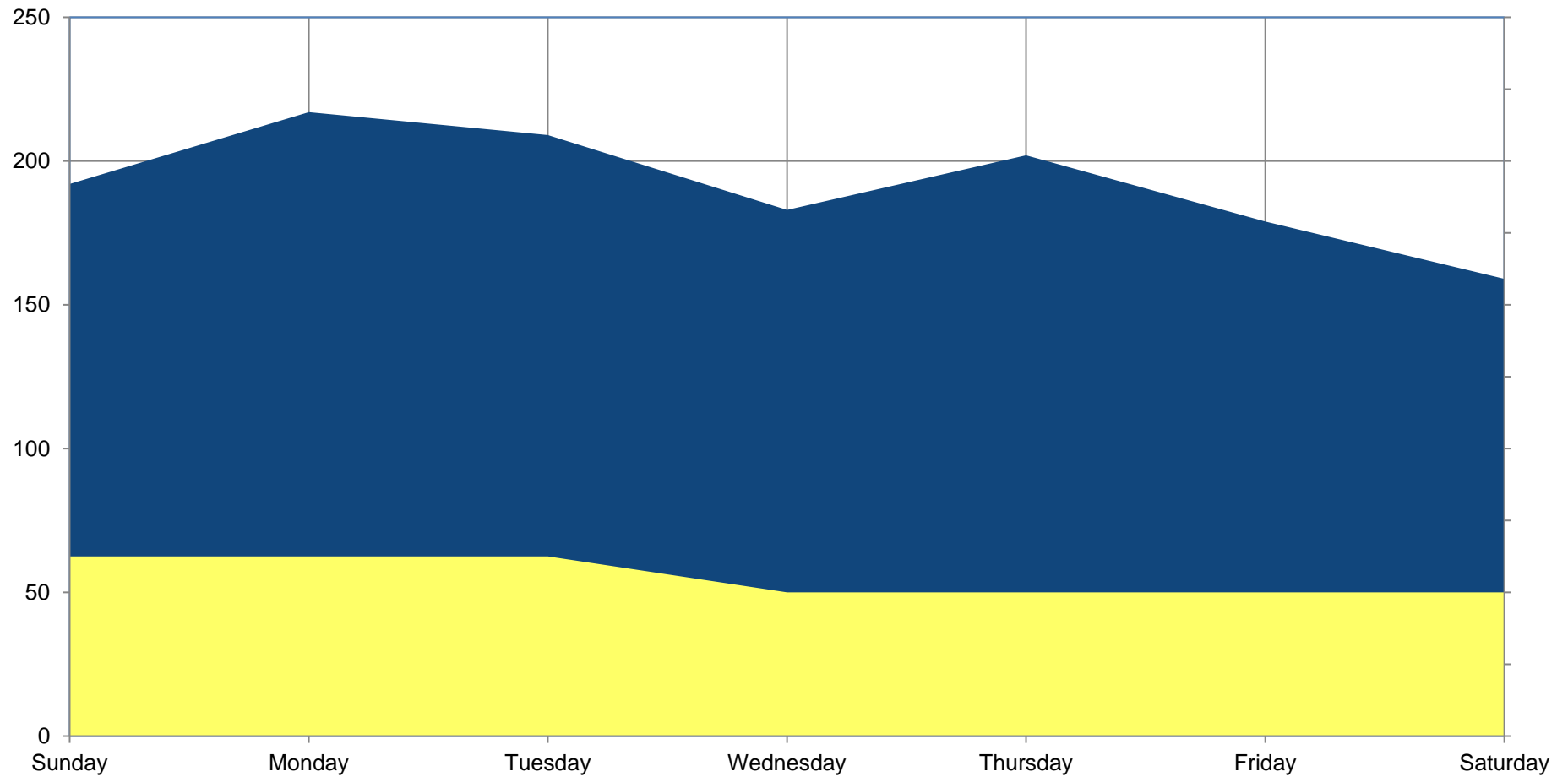
Moniteau County Emergency Dispatch

Monthly Report - Daily CAD Events



Totals by Day	
Day	Total
Sunday	192
Monday	217
Tuesday	209
Wednesday	183
Thursday	202
Friday	179
Saturday	159
Total	1341

Total Days	
Day	Total
Sunday	5
Monday	5
Tuesday	5
Wednesday	4
Thursday	4
Friday	4
Saturday	4
Total Days	31



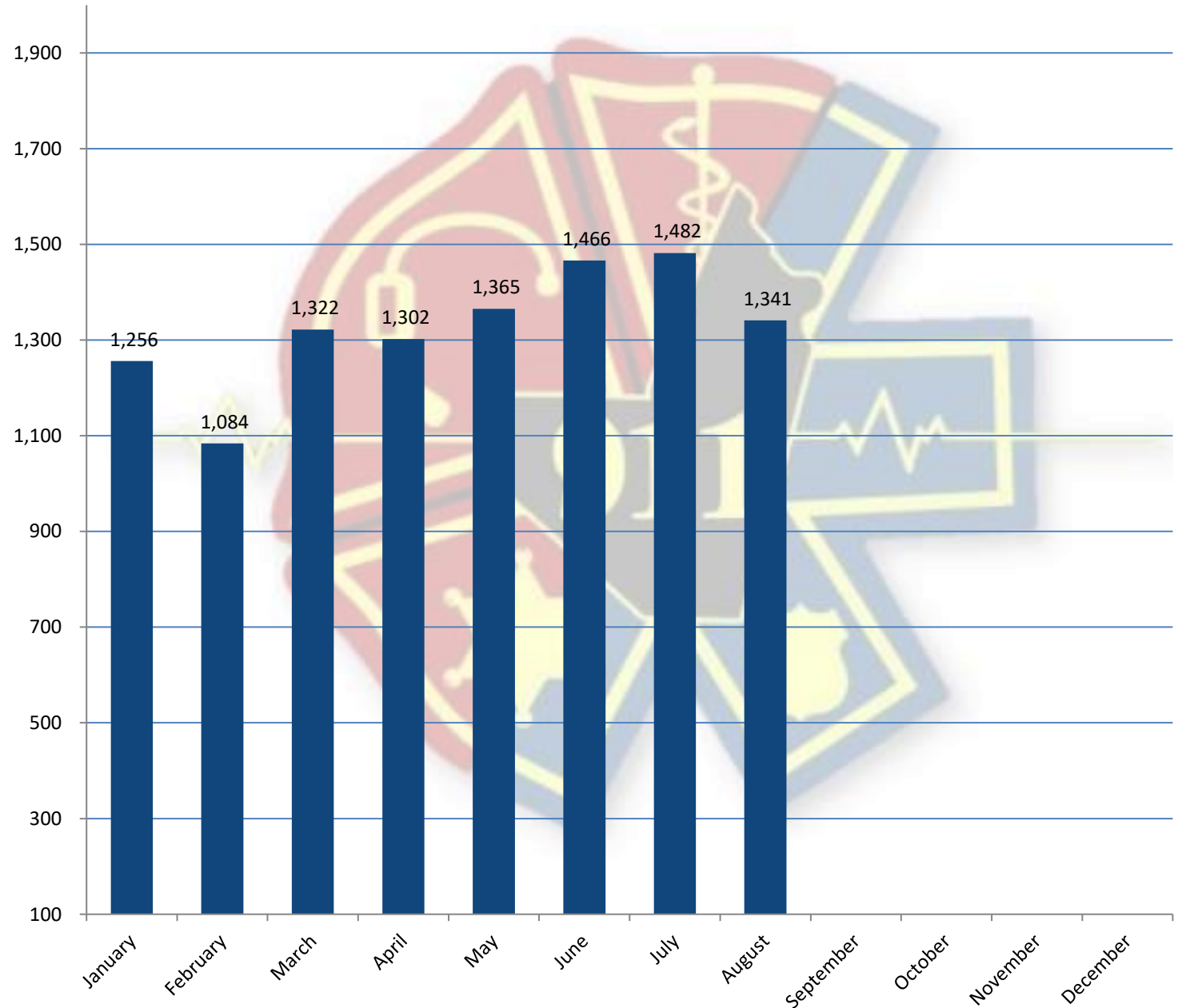


Moniteau County Emergency Dispatch

Monthly Report - CAD Events



	Current Year	Previous Year
January	1,256	1,569
February	1,084	1,618
March	1,322	1,547
April	1,302	1,102
May	1,365	1,481
June	1,466	1,601
July	1,482	1,619
August	1,341	1,647
September		1,591
October		1,539
November		1,329
December		1,462
Year to Date Total	10,618	18,105





Moniteau County Emergency Dispatch

Monthly Report - Hourly Events

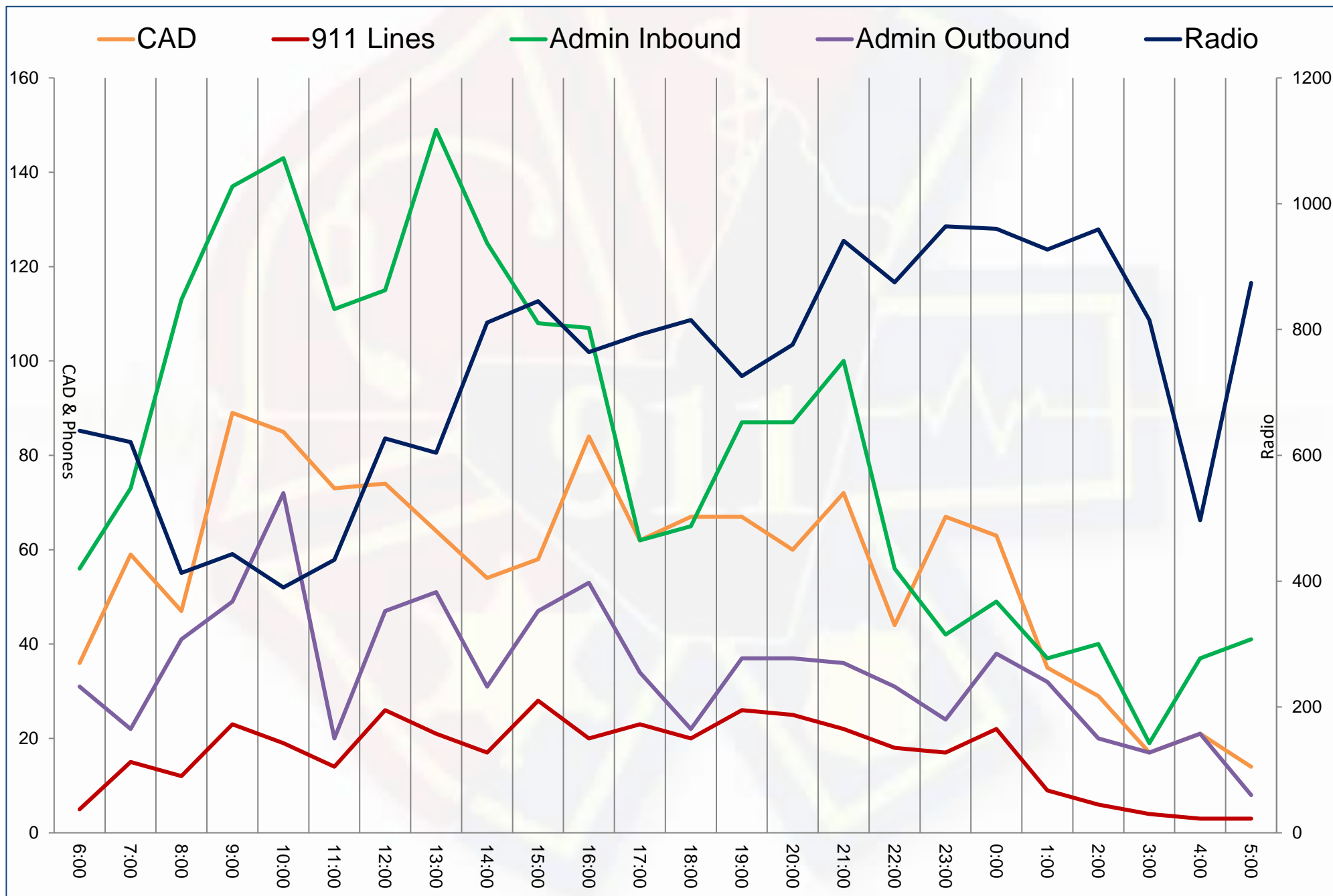


Time	CAD	911 Lines	Admin Inbound	Admin Outbound	Radio	
6:00:00	06:59:59	36	5	56	31	639
7:00:00	07:59:59	59	15	73	22	621
8:00:00	08:59:59	47	12	113	41	413
9:00:00	09:59:59	89	23	137	49	443
10:00:00	10:59:59	85	19	143	72	390
11:00:00	11:59:59	73	14	111	20	434
12:00:00	12:59:59	74	26	115	47	627
13:00:00	13:59:59	64	21	149	51	604
14:00:00	14:59:59	54	17	125	31	811
15:00:00	15:59:59	58	28	108	47	845
16:00:00	16:59:59	84	20	107	53	764
17:00:00	17:59:59	62	23	62	34	792
18:00:00	18:59:59	67	20	65	22	815
19:00:00	19:59:59	67	26	87	37	726
20:00:00	20:59:59	60	25	87	37	776
21:00:00	21:59:59	72	22	100	36	941
22:00:00	22:59:59	44	18	56	31	875
23:00:00	23:59:59	67	17	42	24	964
0:00:00	00:59:59	63	22	49	38	960
1:00:00	01:59:59	35	9	37	32	927
2:00:00	02:59:59	29	6	40	20	959
3:00:00	03:59:59	17	4	19	17	815
4:00:00	04:59:59	21	3	37	21	497
5:00:00	05:59:59	14	3	41	8	874
TOTAL		1341	398	1959	821	17512



Moniteau County Emergency Dispatch

Monthly Report - Hourly Events





Moniteau County Emergency Dispatch

Monthly Report - 911 Ring Time



Time	1-5 Seconds	6-10 Seconds	> 10 Seconds	# 911 Calls
6:00:00 - 06:59:59	5			5
7:00:00 - 07:59:59	15			15
8:00:00 - 08:59:59	11	1		12
9:00:00 - 09:59:59	21	2		23
10:00:00 - 10:59:59	18	1		19
11:00:00 - 11:59:59	13	1		14
12:00:00 - 12:59:59	24	2		26
13:00:00 - 13:59:59	20	1		21
14:00:00 - 14:59:59	16	1		17
15:00:00 - 15:59:59	25	3		28
16:00:00 - 16:59:59	18	2		20
17:00:00 - 17:59:59	19	4		23
18:00:00 - 18:59:59	18	2		20
19:00:00 - 19:59:59	16	9	1	26
20:00:00 - 20:59:59	23	2		25
21:00:00 - 21:59:59	21	1		22
22:00:00 - 22:59:59	15	3		18
23:00:00 - 23:59:59	17			17
0:00:00 - 00:59:59	22			22
1:00:00 - 01:59:59	9			9
2:00:00 - 02:59:59	5	1		6
3:00:00 - 03:59:59	4			4
4:00:00 - 04:59:59	3			3
5:00:00 - 05:59:59	2	1		3
TOTAL	360	37	1	398
Overall %	90.45%	9.30%	0.25%	

This report is measured from the time the 911 call is received at the Moniteau County Emergency Dispatch Center from the time the call is answered by a telecommunicator. The caller experiences on average, an additional 2 seconds known as "set-up" time which is the period the call is received at the carrier facility and is routed to the appropriate 911 PSAP.



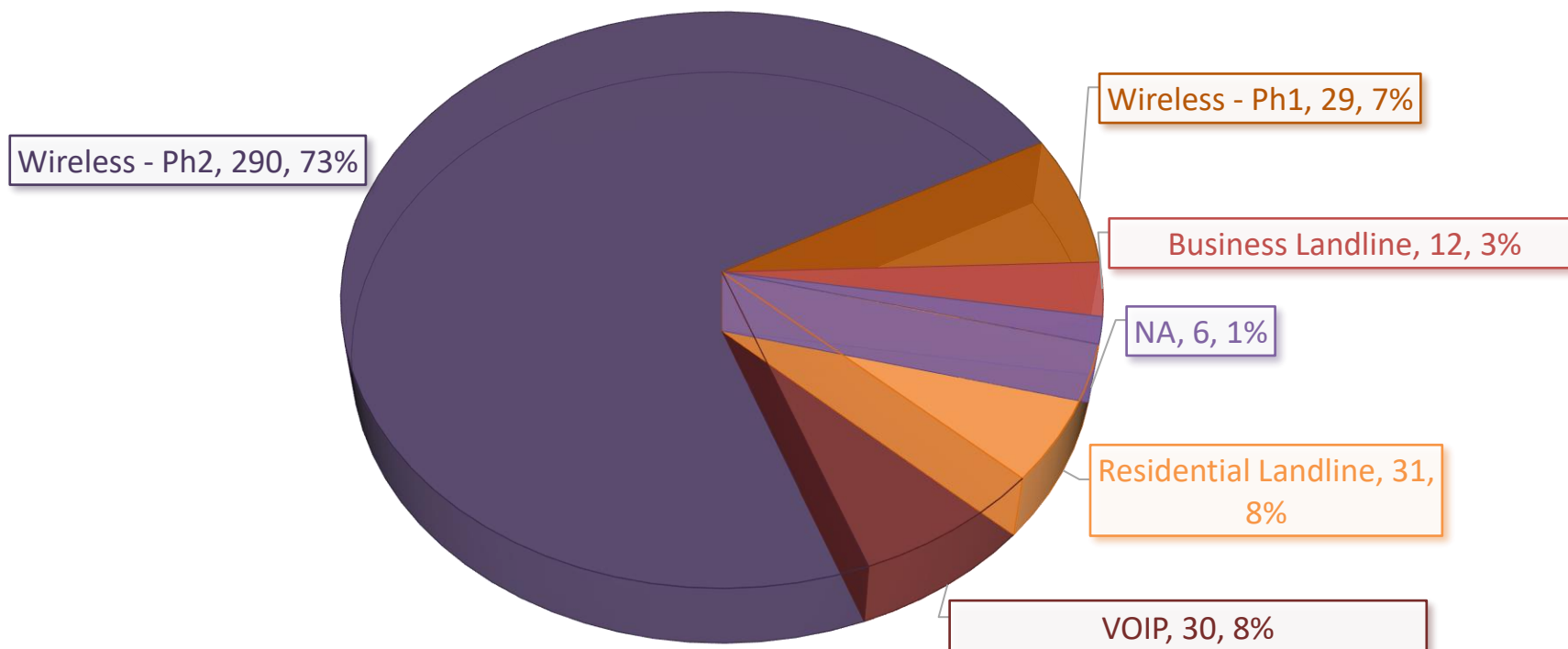
Moniteau County Emergency Dispatch

Monthly Report - 911 Class of Service



	January	February	March	April	May	June	July	August	September	October	November	December
Business Landline	28 8%	13 4%	17 4%	12 3%	13 3%	17 4%	27 6%	12 3%				
NA	4 1%	0 0%	0 0%	1 0%	0 0%	6 1%	3 1%	6 2%				
Residential Landline	29 8%	16 5%	21 5%	25 6%	20 5%	16 4%	18 4%	31 8%				
VOIP	23 7%	19 5%	22 5%	20 5%	23 6%	12 3%	34 8%	30 8%				
Wireless - Ph2	233 66%	192 55%	236 55%	203 52%	298 78%	330 76%	317 72%	290 73%				
Wireless - Ph1	34 10%	29 8%	133 31%	126 33%	30 8%	52 12%	43 10%	29 7%				
TOTAL	351	269	429	387	384	433	442	398	0	0	0	0
Abandoned 911 Calls	37	26		45	44	53	44	29				
911 Text Sessions	0	0		3	1	0	1	0				

August





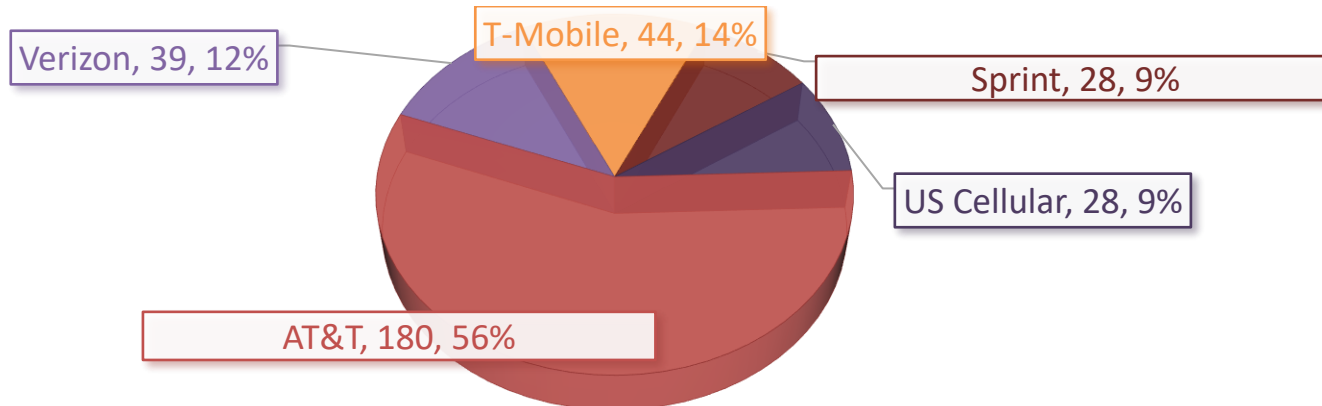
Moniteau County Emergency Dispatch

Monthly Report - Cellular 911 Calls



	January	February	March	April	May	June	July	August	September	October	November	December	
AT&T				197	60%	221	67%	237	62%	237	66%	180	56%
Verizon				74	22%	27	8%	54	14%	35	10%	39	12%
T-Mobile				30	9%	45	14%	55	14%	38	11%	44	14%
Sprint				10	3%	14	4%	13	3%	15	4%	28	9%
US Cellular				18	5%	22	7%	23	6%	35	10%	28	9%
TOTAL	0	0	0	329		329		382		360		319	
Of the above Total Cellular 911 Calls this table represents the amount which are Abandoned / Hang-up Calls													
AT&T				24		26		28		24		8	
Verizon				9		4		8		5		3	
T-Mobile				1		5		6		6		6	
Sprint						1		1		1		0	
US Cellular				4		5		4		2		2	
TOTAL	0	0	0	38		41		47		38		19	
Of the above Cellular 911 Abandoned / Hang-up Calls, this table represents how many of these came from Disconnected Phone (no active cellular plan / no SIM card)													
AT&T				2		2		2		2		3	
Verizon								1					
T-Mobile								2		1			
Sprint													
US Cellular				2						1			
TOTAL	0	0	0	4		2		5		3		4	

August



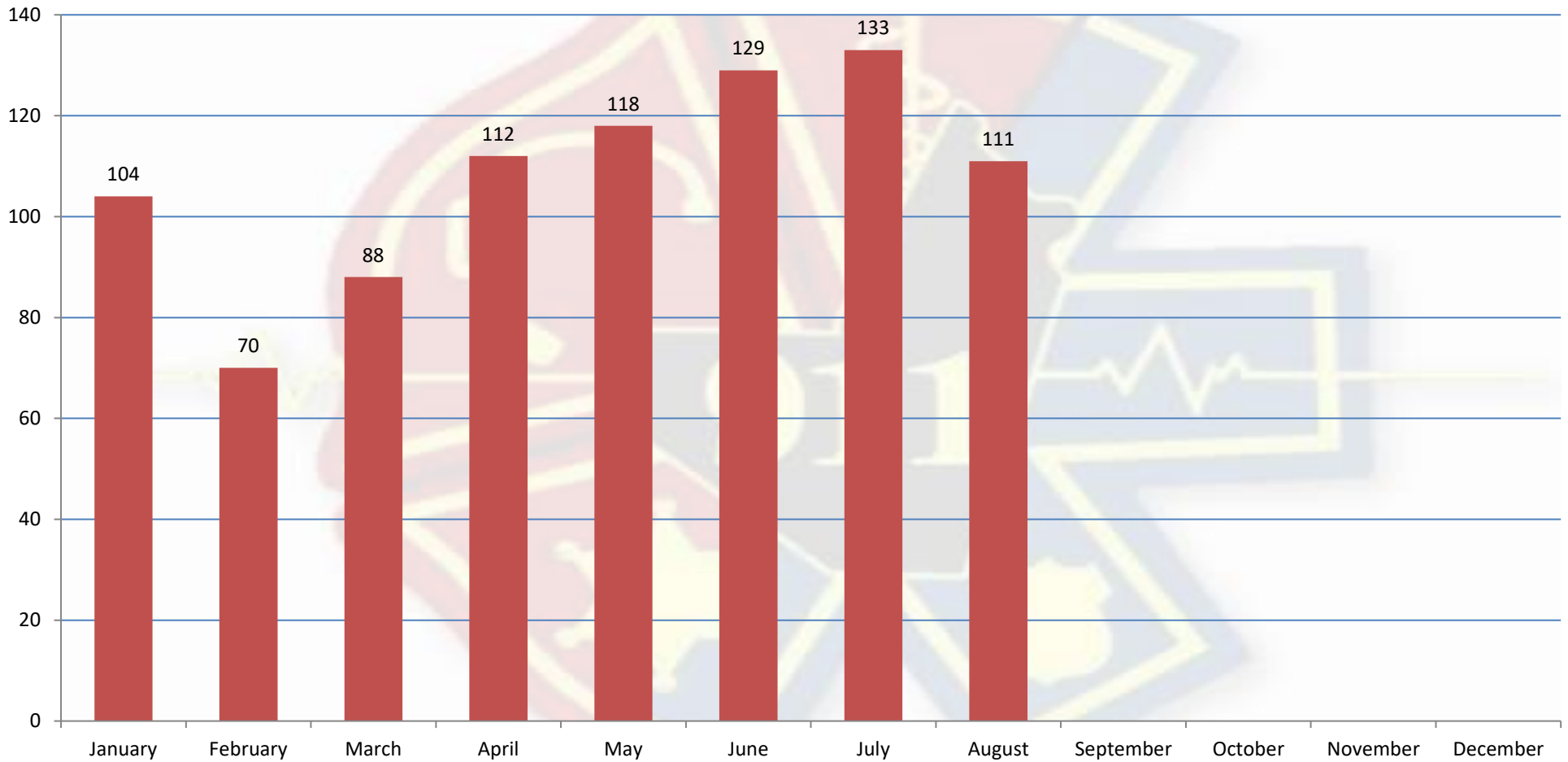


Moniteau County Emergency Dispatch

Monthly Report - 911 Hang-Up Calls



	January	February	March	April	May	June	July	August	September	October	November	December
SOUNDS OF DISTRESS		1	1		1			3				
Requiring Response to investigate	8	8	6	10	7	12	4	13				
Resolved by Dispatch	96	61	81	102	110	117	129	95				
TOTAL	104	70	88	112	118	129	133	111				



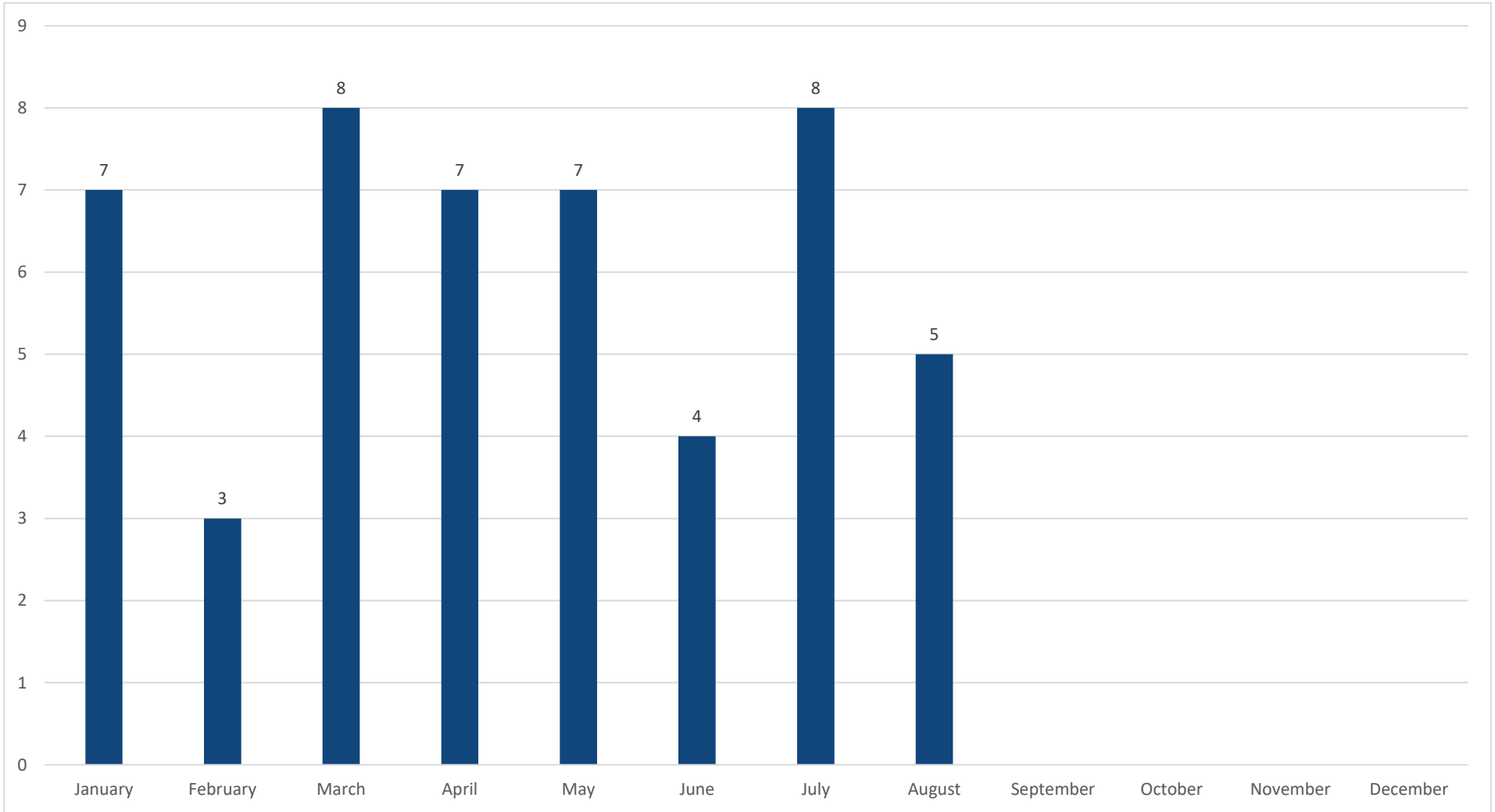


Moniteau County Emergency Dispatch

Monthly Report - Addressing



	January	February	March	April	May	June	July	August	September	October	November	December
New Addresses Assigned	7	3	8	7	7	4	8	5				
Previous Year	6	8	3	9	5	3	9	1	8	7	4	6



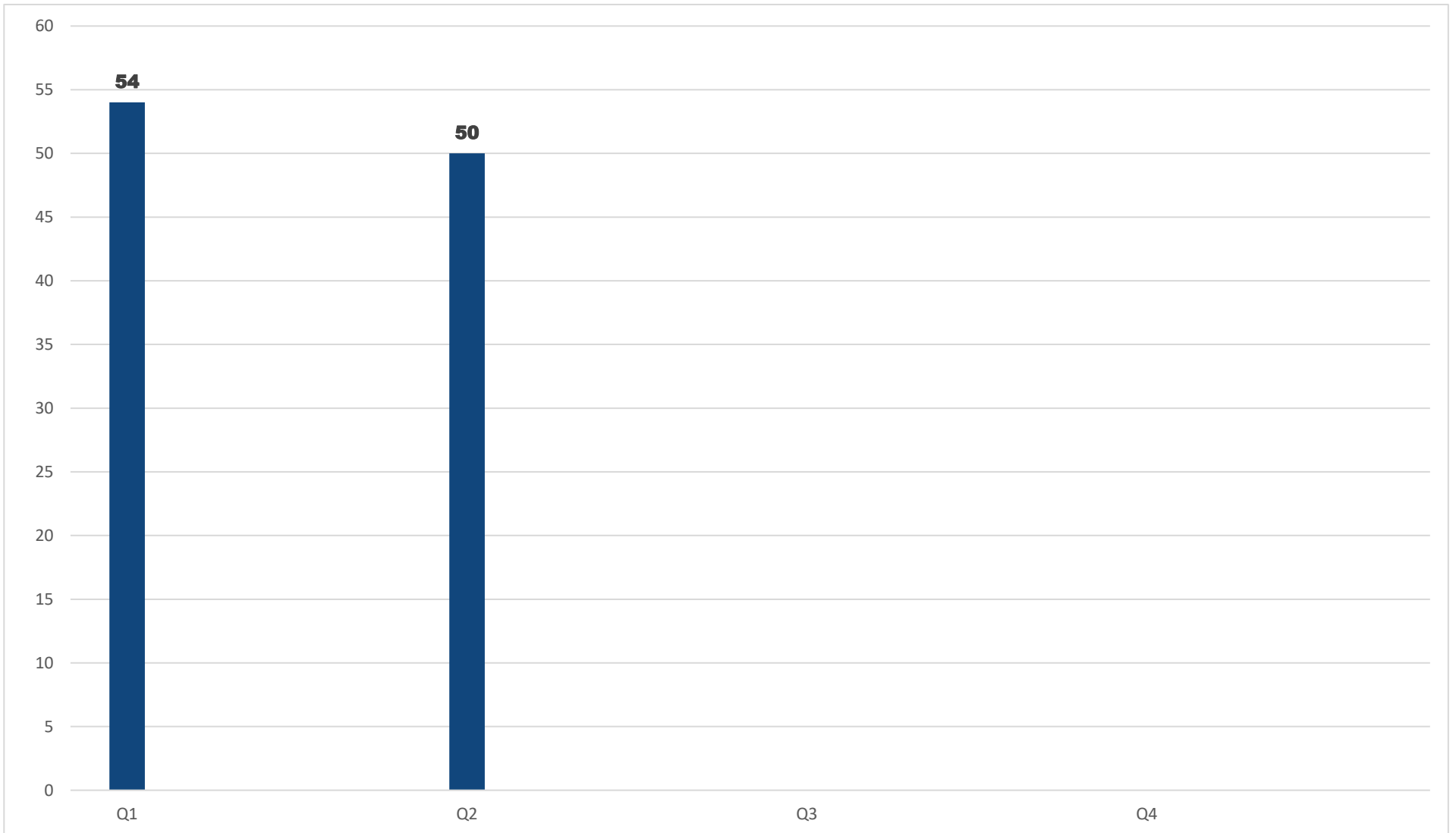


Moniteau County Emergency Dispatch

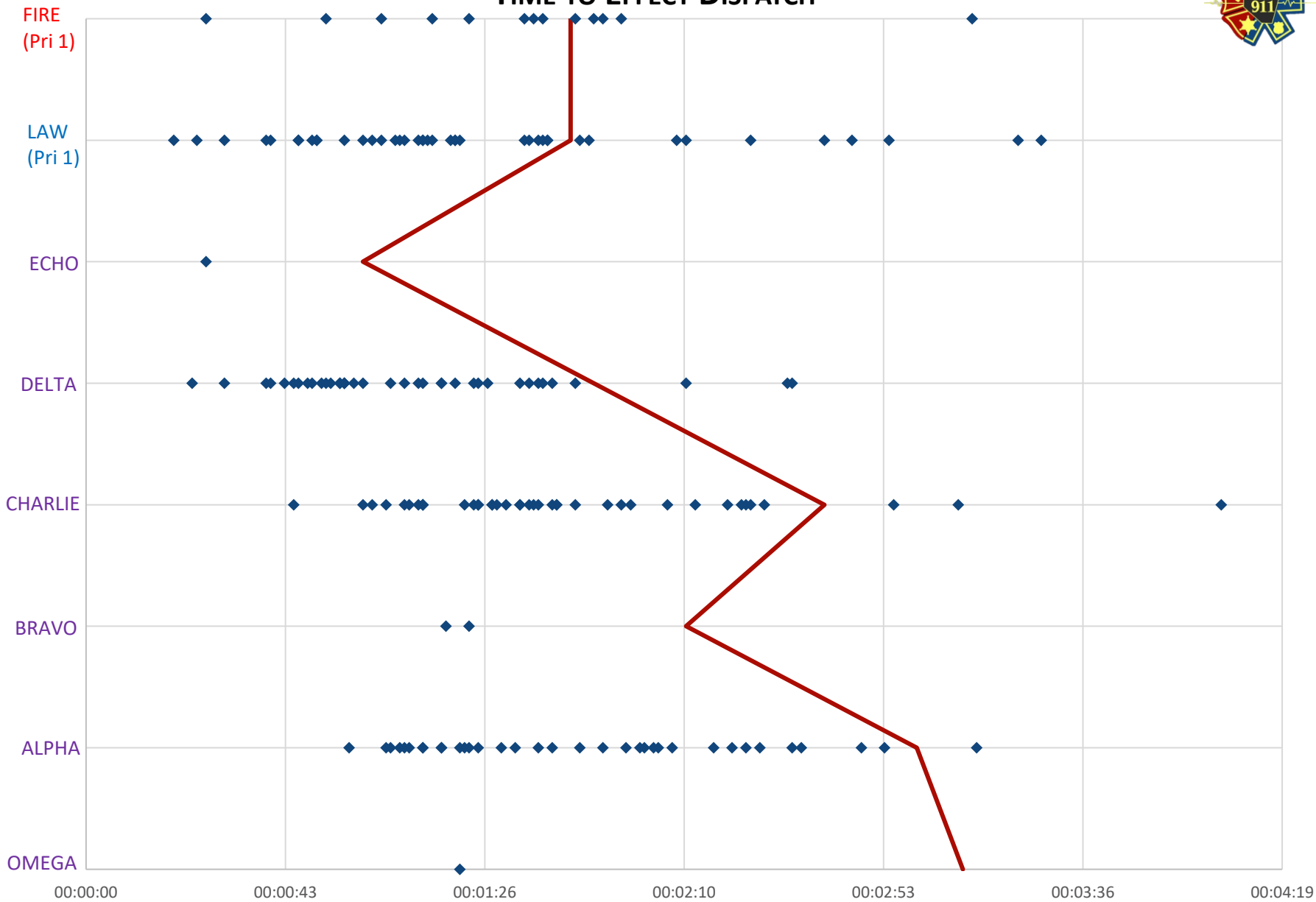
Monthly Report - Replaced Missing Road Signs



	Q1	Q2	Q3	Q4
Road Signs Replaced	54	50	66	63
Previous Year	-	-	66	63



TIME TO EFFECT DISPATCH





Moniteau County Emergency Dispatch

Monthly Report - Quality Assurance

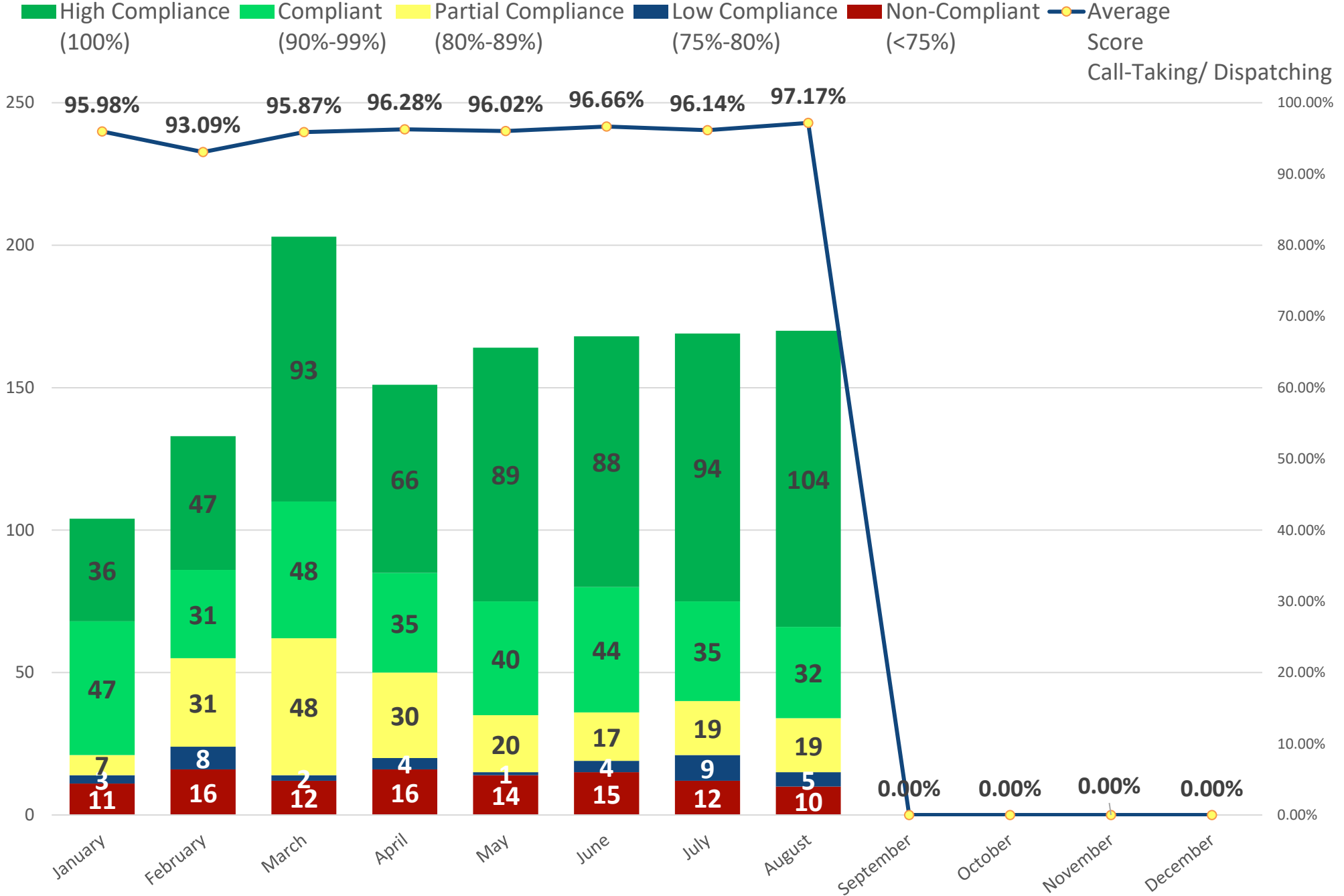


	January	February	March	April	May	June	July	August	September	October	November	December
Average Score Call-Taking/ Dispatching	95.98%	93.09%	95.87%	96.28%	96.02%	96.66%	96.14%	97.17%	0.00%	0.00%	0.00%	0.00%
High Compliance (100%)	36	47	93	66	89	88	94	104				
	35%	35%	46%	44%	54%	52%	56%	61%	0%	0%	0%	0%
Compliant (90%-99%)	47	31	48	35	40	44	35	32				
	45%	23%	24%	23%	24%	26%	21%	19%	0%	0%	0%	0%
Partial Compliance (80%-89%)	7	31	48	30	20	17	19	19				
	7%	23%	24%	20%	12%	10%	11%	11%	0%	0%	0%	0%
Low Compliance (75%-80%)	3	8	2	4	1	4	9	5				
	3%	6%	1%	3%	1%	2%	5%	3%	0%	0%	0%	0%
Non-Compliant (<75%)	11	16	12	16	14	15	12	10				
	11%	12%	6%	11%	9%	9%	7%	6%	0%	0%	0%	0%
Total Assessments	104	133	203	151	164	168	169	170	0	0	0	0
Call Taking	92.77%	90.56%	95.19%	95.63%	94.86%	95.26%	94.29%	94.71%				
LAW	20	26	36	24	32	45	33	33				
FIRE	8	14	18	9	14	7	9	5				
EMS	41	49	59	65	74	70	87	99				
Dispatching	99.19%	95.62%	96.55%	96.93%	97.18%	98.06%	97.99%	99.63%				
LAW	15	17	21	8	24	36	28	28				
FIRE / EMS	20	14	68	45	20	10	12	5				
Warrant	99.76%	99.68%	99.67%	99.69%	99.54%	99.58%	99.56%					
Entry <small>*Not included in above table*</small>	38	19	36	32	24	19	31	20				



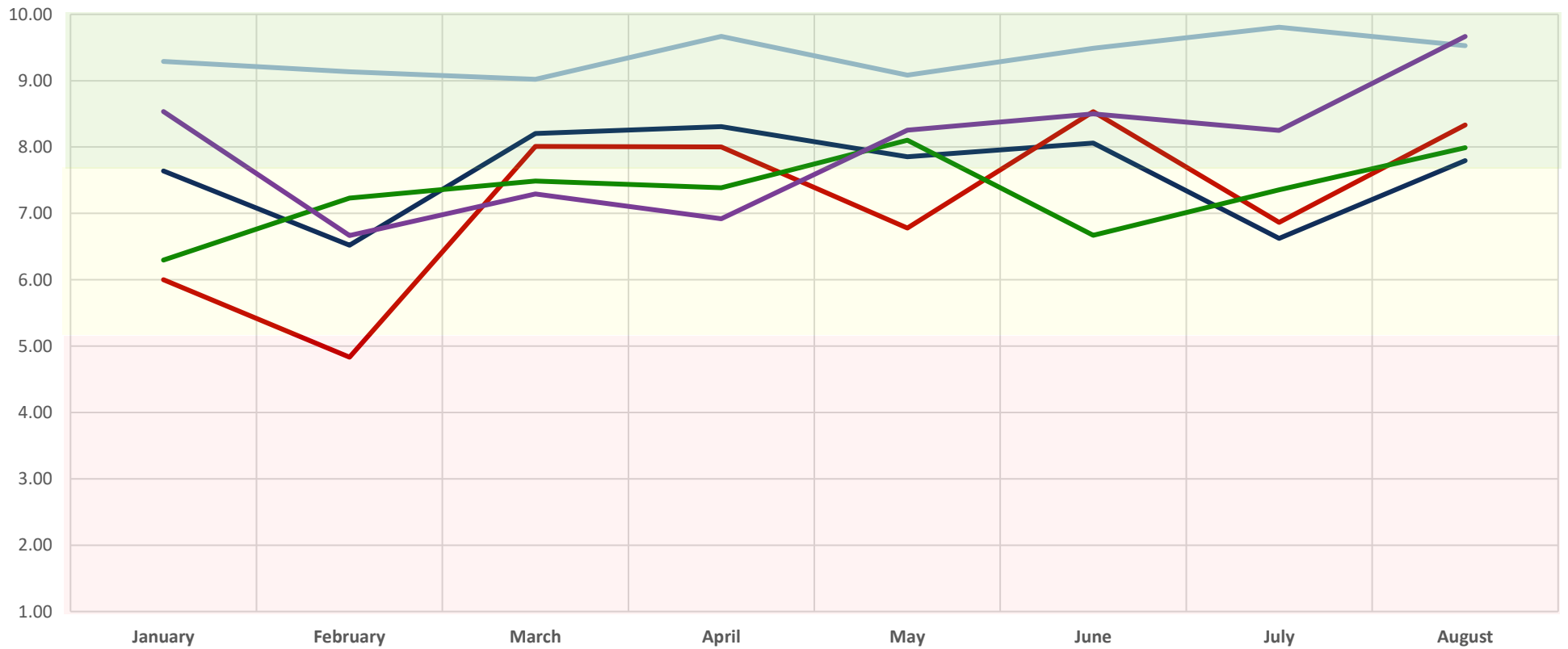
Moniteau County Emergency Dispatch

Monthly Report - Quality Assurance



Non-Compliant (<75%)					Low Compliance (75%-79%)			Partial Compliance (80%-89%)			Compliant (90%-99%)			High Compliance (100%)		
1	2	3	4	5.1	5.2	6	6.4	6.5	7	7.69	7.7	8	8.4	8.5	9	10

	January	February	March	April	May	June	July	August	September	October	November	December
Law Calltaking	7.64	6.52	8.20	8.31	7.85	8.06	6.62	7.80				
Law Dispatching	9.29	9.13	9.02	9.67	9.08	9.49	9.81	9.53				
Fire Calltaking	6.00	4.83	8.01	8.00	6.78	8.53	6.87	8.33				
EMS Calltaking	6.30	7.23	7.49	7.39	8.10	6.67	7.36	7.99				
Fire/EMS Calltaking	8.53	6.67	7.29	6.92	8.25	8.50	8.25	9.67				



— Law Calltaking — Law Dispatching
— Fire Calltaking — EMS Calltaking

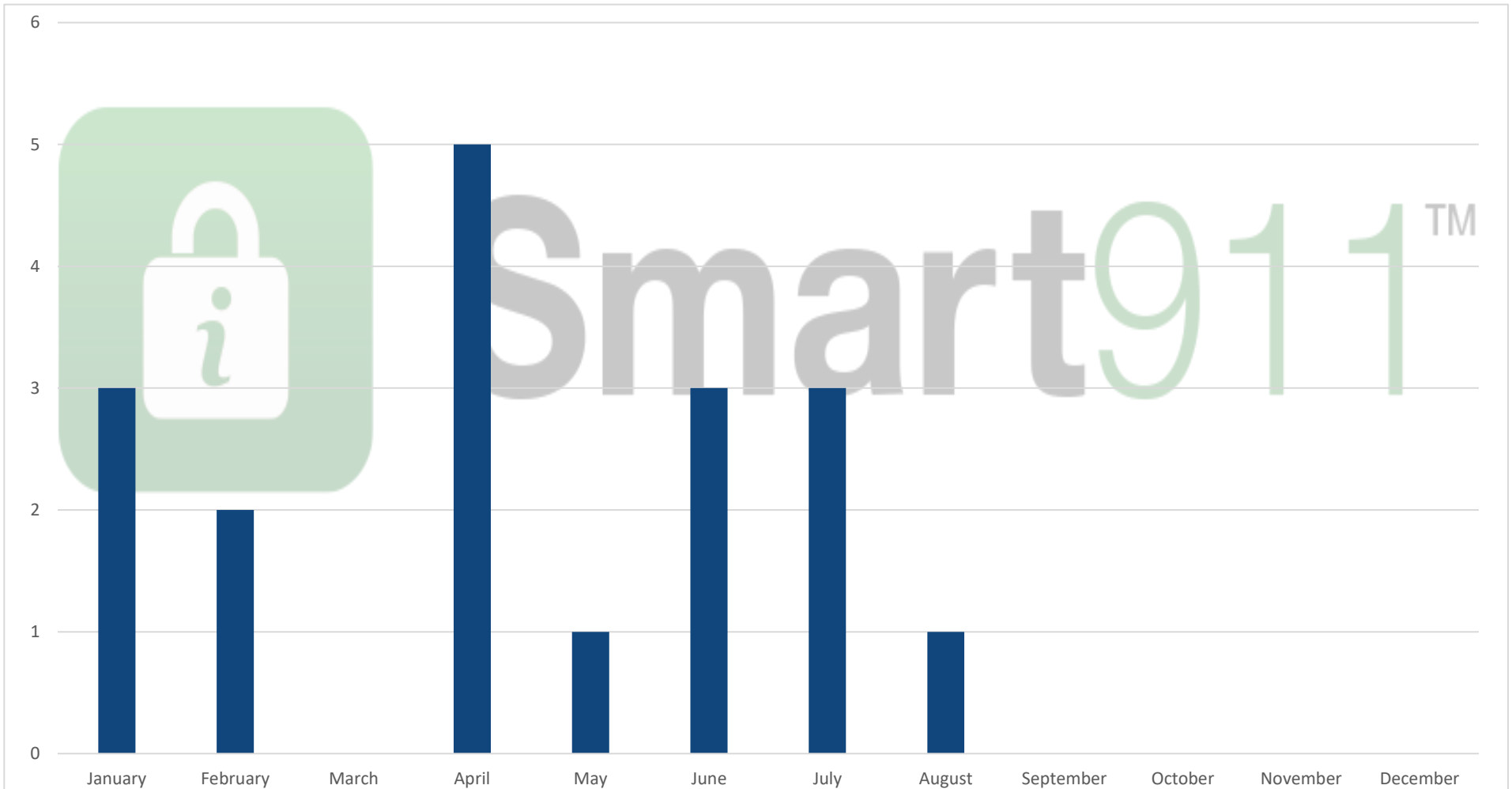


Moniteau County Emergency Dispatch

Monthly Report - Smart911 Profiles Created



	January	February	March	April	May	June	July	August	September	October	November	December
Moniteau County Smart911 Profiles Created	3	2	0	5	1	3	3	1				
Previous Year	5	6	16	2	5	1	8	1	3	4	1	1





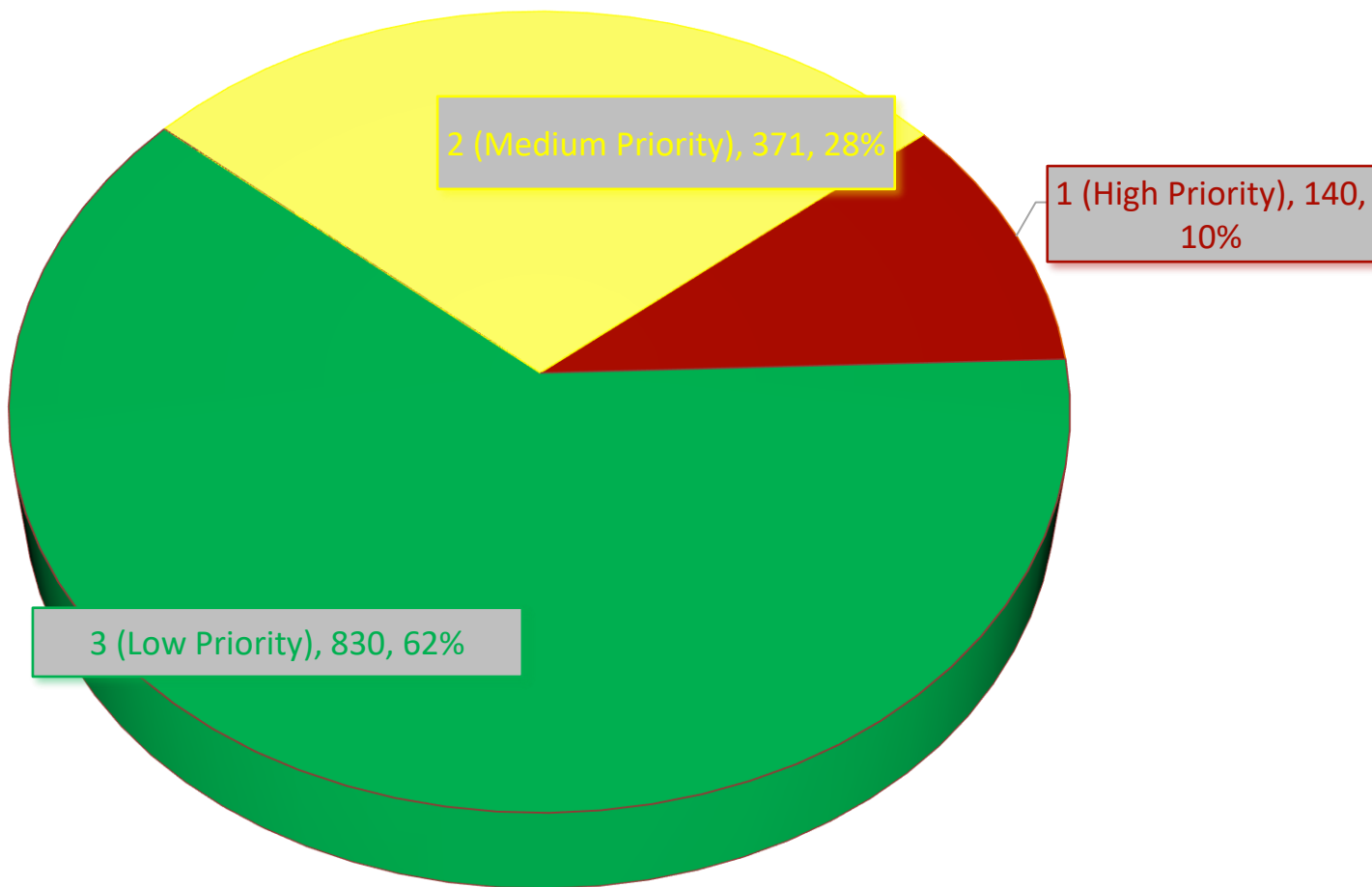
Moniteau County Emergency Dispatch

Monthly Report - Calls for Service Priority



	January	February	March	April	May	June	July	August	September	October	November	December
3 (Low Priority)	723	712	802	827	833	936	954	830				
2 (Medium Priority)	436	260	375	353	386	389	375	371				
1 (High Priority)	97	112	145	122	146	141	153	140				

August



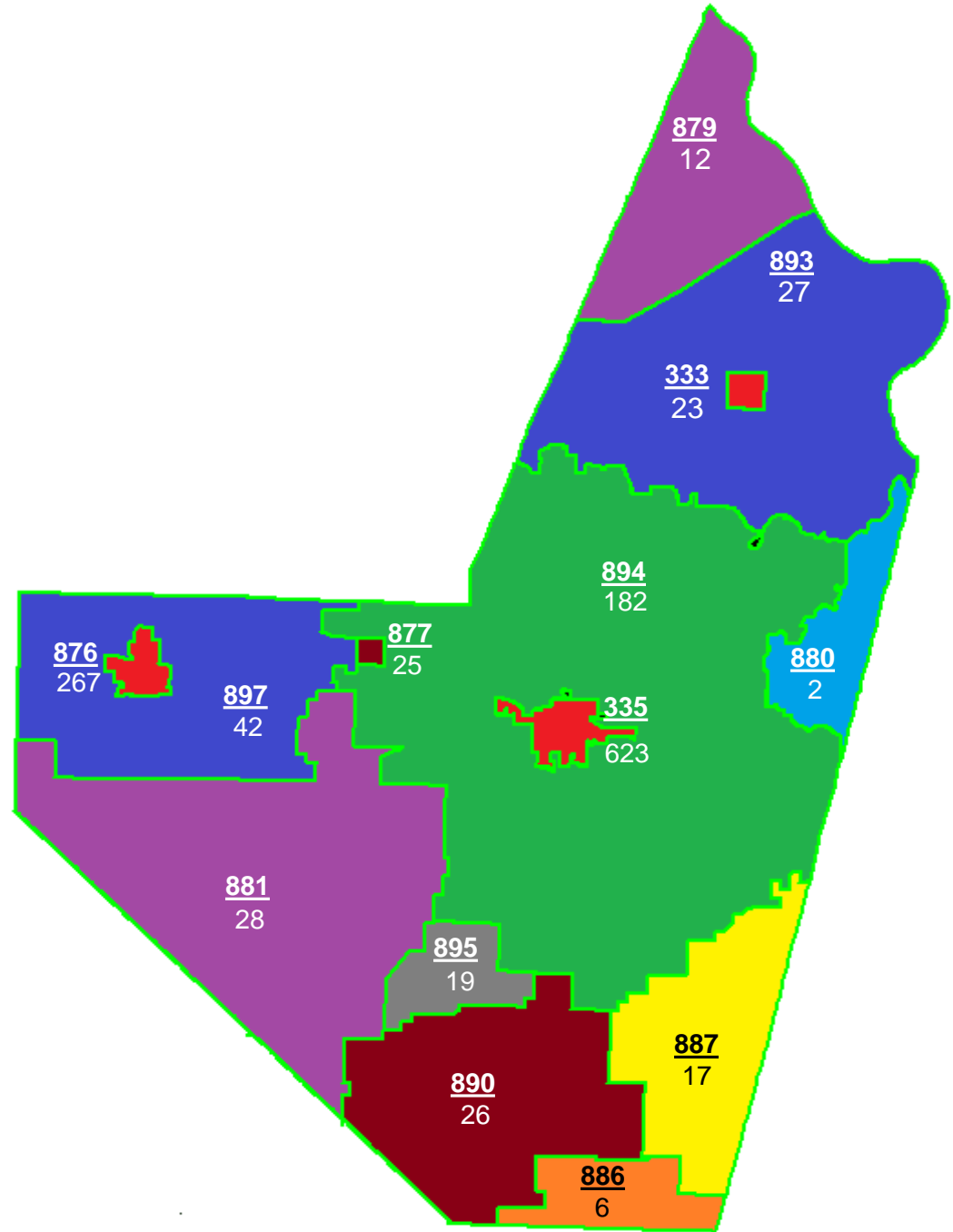


Moniteau County Emergency Dispatch

Monthly Report - Calls for Service by Emergency Service Zone



Emergency Service Zone #	Total Calls for Service
333	23
335	623
876	267
877	25
879	12
880	2
881	28
886	6
887	17
890	26
893	27
894	182
895	19
897	42
Address Overrides	42
Total Calls for Service	1341





Moniteau County Emergency Dispatch

Monthly Report - Dispositions



	BUILDING SECURE/NO ASSIST OTHER AGENCY ADVISED	DECEASED/NO STATUS CHANGE	DISREGARDED	EMS TRANSPORTED	FIRE - MITIGATED/RESOLVED	FALSE ALARM	HANDLED BY DISPATCH	HANDLED BY OFFICER	NO ACTION	NO CONTACT	NO RESPONSE	PATIENT REFUSED	REFERRED TO ANOTHER AGENCY	REPORT TAKEN	SUMMONS ISSUED	UNFOUNDED	WARNING	
Moniteau County Sheriffs Office	29	2	1	6	23			1	182	23	58			1	42	17	17	100
California Police Department	23	139		1	1		2	1	206	14	10	1			29	4	9	33
Tipton Police Department	1	23	16	4					116	3	10	1			26	4	4	17
Jamestown Police Dept									2							1		7
California City Fire Department	1			4			1	17				1						
Tipton Fire Department				1			1	14				3						
California Rural FPD	2		1	2				12				5						
Jamestown Rural FPD	1			1				8										
Fortuna FPD	1			3				1				1						1
Moreau FPD				1				2										
MidMO Ambulance			2	15		110				2	3		33					1
Moniteau 911								69		1				3				



Moniteau County Emergency Dispatch

Monthly Report - Assist other Agency



	Moniteau County Sheriffs Office	California Police Department	Tipton Police Department	Jamestown Police Dept	California City Fire Department	Tipton Fire Department	California Rural FPD	Jamestown Rural FPD	Fortuna FPD	Moreau FPD
Moniteau County Sheriffs Office			10	7						
California Police Department										
Tipton Police Department										
Jamestown Police Dept										
California City Fire Department							4			
Tipton Fire Department										
California Rural FPD										
Jamestown Rural FPD										
Fortuna FPD								3		
Moreau FPD										



Moniteau County Emergency Dispatch

Monthly Report - CAD Event Totals



	January	February	March	April	May	June	July	August	September	October	November	December	YTD Total
Moniteau County Sheriffs Office	529	386	534	534	489	629	509	502					4112
California Police Department	481	474	492	508	563	519	636	473					4146
Tipton Police Department	128	140	194	174	214	226	187	225					1488
Jamestown Police Dept	6	10	15	16	16	13	9	10					95
California Fire Department	28	27	37	34	39	26	42	24					257
Tipton Fire Department	15	26	22	20	28	26	26	19					182
California Rural Fire District	16	19	37	24	22	14	22	22					176
Jamestown Rural Fire District	7	6	12	5	8	6	9	10					63
Fortuna Fire District	13	24	27	13	20	19	24	7					147
Moreau Fire District	1	3	6	3	2	3	2	3					23
MidMO 10	75	76	103	65	89	84	111	99					702
MidMO 20	61	36	43	42	46	38	55	57					378
MidMO 30 / 31	4	9	10	6	10	6	13	6					64



Moniteau County Emergency Dispatch

Monthly Report - Call Type Totals - Moniteau County Sheriffs Office



Call Type	Total
TRAFFIC STOP	133
PAPER SERVICE	71
FOLLOW UP	65
CHECK WELL BEING -	19
VEHICLE CHECK	18
DRIVING VIOLATION	14
SUSPICIOUS ACTIVITY -	13
ASSIST CITIZEN	11
WARRANT SERVICE	11
THEFT - NOT IN PROGRESS	10
TRAFFIC HAZARD - LIVESTOCK IN/AROUND ROADWAY	7
TRAFFIC CRASH - UNKNOWN INJURIES	6
STRANDED MOTORIST	6
HARASSMENT/THREAT - NOT IN PROGRESS	6
INVESTIGATION	5
DOMESTIC - PHYSICAL	4
PROPERTY DESTRUCTION - NOT IN PROGRESS	4
ABANDONED VEHICLE	4
DOMESTIC - VERBAL	4
TRAFFIC CRASH - NO INJURIES	4
CIVIL ISSUE -	4
911 HANG UP/OPEN LINE -	4
ASSIST OTHER AGENCY - LAW AGENCY	4
NARCOTICS VIOLATION	3
TRESPASSING - IN PROGRESS	3
TRAFFIC HAZARD -	3
ANIMAL COMPLAINT	3
SUICIDAL PERSON	3
SUSPICIOUS ACTIVITY - VEHICLE	3
DISTURBANCE - VERBAL	2
COMPLIANCE CHECK	2
CIVIL ISSUE - CHILD CUSTODY	2
BURGLARY - IN PROGRESS	2
ALARM - BUSINESS	2
DISTURBANCE - NUISANCE	2
FOLLOW UP	2
WEAPONS OFFENSE -	2
PROPERTY DESTRUCTION - JUST OCCURED	2
TRAFFIC CRASH - INJURIES	2
SUSPICIOUS ACTIVITY -	2
ALARM - RESIDENCE	2
BURGLARY - NOT IN PROGRESS	2
LOST/FOUND PROPERTY	2

Call Type	Total
TRAFFIC HAZARD -	1
UNCONTROLLABLE JUVENILE	1
TRAFFIC STOP	1
EXTRA PATROL	1
PAPER SERVICE	1
PROWLER	1
MISCELLANEOUS ADMIN DUTY	1
PURSUIT	1
ASSAULT - IN PROGRESS	1
FALL UNKNOWN STATUS	1
VEHICLE CHECK	1
DISTURBANCE - NOT IN PROGRESS	1
ESCORT	1
BREATHING PROBLEMS ABNORMAL BREATHING	1
MEDICAL EMERGENCY	1
DISTURBANCE - PHYSICAL	1
MISSING PERSON - RUN AWAY	1
INDECENCY/LEWDNESS	1
TRAUMATIC INJURIES POSSIBLY DANGEROUS BODY AREA	1
THEFT - FRAUD/FORGERY	1
TRESPASSING - NOT IN PROGRESS	1
THEFT - JUST OCCURED	1
UNKNOWN PROBLEM	1
CHECK WELL BEING - PERSON DOWN	1
ORDINANCE VIOLATION -	1
LACERATION SERIOUS HEMORRHAGE	1
CARDIAC / RESPIRATORY ARREST NOT BREATHING	1
LOST/FOUND PROPERTY	1
ASSIST OTHER AGENCY -	1



Moniteau County Emergency Dispatch

Monthly Report - Call Type Totals - California Police Department



Call Type	Total
BUILDING CHECK -	135
FOLLOW UP	50
BUILDING CHECK - OPEN BUSINESS	32
ORDINANCE VIOLATION -	23
TRAFFIC STOP	23
ANIMAL COMPLAINT	18
CHECK WELL BEING -	18
ASSIST CITIZEN	17
SUSPICIOUS ACTIVITY -	11
VEHICLE CHECK	11
ESCORT	10
THEFT - NOT IN PROGRESS	8
ALARM - BUSINESS	7
HARASSMENT/THREAT - NOT IN PROGRESS	7
PROPERTY DESTRUCTION - NOT IN PROGRESS	6
DOMESTIC - VERBAL	6
911 HANG UP/OPEN LINE -	6
TRAFFIC CRASH - NO INJURIES	5
DRIVING VIOLATION	5
DISTURBANCE - VERBAL	4
CIVIL ISSUE - CHILD CUSTODY	4
LINE DOWN	3
ABANDONED VEHICLE	3
DOMESTIC - PHYSICAL	3
WARRANT SERVICE	3
HARASSMENT/THREAT - IN PROGRESS	3
MISCELLANEOUS ADMIN DUTY	3
THEFT - FRAUD/FORGERY	2
TRAFFIC STOP	2
LOCK OUT	2
911 HANG UP/OPEN LINE - SOUNDS OF DISTRESS	2
SUSPICIOUS ACTIVITY - VEHICLE	2
DISTURBANCE - PHYSICAL	2
THEFT - JUST OCCURED	2
CIVIL ISSUE - STANDBY	2
MOVE SUBJECTS ON	2

Call Type	Total
ASSIST OTHER AGENCY -	1
LACERATION SERIOUS HEMORRHAGE	1
HEADACHE BREATHING NORMALLY	1
SICK PERSON NO PRIORITY SYMPTOMS	1
LOST/FOUND PROPERTY	1
INDECENCY/LEWDNESS	1
MEDICAL EMERGENCY	1
TOWED/REPOSSESSED	1
MEDICAL EMERGENCY	1
SICK PERSON GENERAL WEAKNESS	1
DIABETIC PROBLEMS ALERT & BEHAVING NORMALLY	1
SICK PERSON NOT ALERT	1
ALARM - RESIDENCE	1
WEAPONS OFFENSE -	1
HEART PROBLEMS ABNORMAL BREATHING	1
THEFT - GAS DRIVE OFF	1
TRESPASSING - NOT IN PROGRESS	1
ALARM - MEDICAL	1
UNCONSCIOUS / FAINTING NOT ALERT	1
ASSAULT - IN PROGRESS	1
ASSAULT - NOT IN PROGRESS	1
SICK PERSON BLOOD PRESSURE ABNORMALITY	1
TRANSFER	1
ASSIST OTHER AGENCY - DFS	1
UNCONSCIOUS / FAINTING	1
ASSIST OTHER AGENCY - LAW AGENCY	1
DISTURBANCE - NUISANCE	1
PURSUIT	1
FALL	1
SEXUAL OFFENSE - NOT IN PROGRESS	1
HOME INVASION -	1



Moniteau County Emergency Dispatch

Monthly Report - Call Type Totals - Tipton Police Department



Call Type	Total
TRAFFIC STOP	29
FOLLOW UP	27
BUILDING CHECK - ASSIST CITIZEN	15
ANIMAL COMPLAINT	13
ORDINANCE VIOLATION - LOCK OUT	11
DRIVING VIOLATION	9
SUSPICIOUS ACTIVITY - VEHICLE CHECK	8
CHECK WELL BEING - CIVIL ISSUE - CHILD CUSTODY	8
TRAFFIC CRASH - NO INJURIES	8
LOST/FOUND PROPERTY	8
PROPERTY DESTRUCTION - NOT IN PROGRESS	7
HARASSMENT/THREAT - NOT IN PROGRESS	7
ASSIST OTHER AGENCY - DFS	7
SUSPICIOUS ACTIVITY - VEHICLE	7
THEFT - NOT IN PROGRESS	7
ALARM - FIRE	7
SUICIDAL PERSON	6
BREATHING PROBLEMS ABNORMAL BREATHING	6
ALARM - MEDICAL	6
BUILDING CHECK - OPEN DOOR/WINDOW	6
DOMESTIC - PHYSICAL	6
STRANDED MOTORIST	6
MOVE SUBJECTS ON ESCORT	6
911 HANG UP/OPEN LINE -	5

Call Type	Total
DISTURBANCE - NUISANCE	1
BREATHING PROBLEMS CLAMMY OR COLD SWEATS	1
DOMESTIC - VERBAL	1
ALARM - BUSINESS	1
TRESPASSING - IN PROGRESS	1
ASSIST OTHER AGENCY - SUSPECTED COVID-19 CASE	1
INVESTIGATION	1
ALLERGIC REACTION/BITE/STING NO DIFF BRTHNG/SWLWNG	1
LINE DOWN	1
TRAFFIC HAZARD - CHECK WELL BEING - PERSON DOWN	1
SICK PERSON VOMITING	1
CHEST PAIN NOT ALERT	1
DISTURBANCE - VERBAL	1
MISCELLANEOUS ADMIN DUTY	1
ASSIST OTHER AGENCY - LAW AGENCY	1
CHOKING NOT ALERT	1
THEFT - FRAUD/FORGERY	1
CIVIL ISSUE - TRAFFIC CRASH - INJURIES	1
PAPER SERVICE	1
TRAFFIC CRASH - UNKNOWN INJURIES	1
ALLERGIC REACTION/BITE/STING DIFF SPEAKING	1
911 HANG UP/OPEN LINE - SOUNDS OF DISTRESS	1
PSYCHIATRIC NON-SUICIDAL AND ALERT	1
FALL UNKNOWN STATUS	1
SICK PERSON NOT ALERT	1
FALL NOT DANGEROUS BODY AREA	1



Moniteau County Emergency Dispatch

Monthly Report - Call Type Totals - Jamestown Police Department



Call Type	Total
TRAFFIC STOP	6
MISCELLANEOUS ADMIN DUTY	2
ORDINANCE VIOLATION -	2

Call Type	Total
-----------	-------



Moniteau County Emergency Dispatch

Monthly Report - Call Type Totals - California Fire Department



Call Type	Total
LINE DOWN	4
TRAFFIC CRASH - UNKNOWN INJURIES	4
LIFT ASSIST NO REPORTED INJURIES	3
TRAFFIC CRASH - NO INJURIES	2
EMRG PT TRX FACILITY/CLINIC ABNORMAL BREATHING	1
CHEST PAIN CLAMMY / COLD SWEATS	1
BREATHING PROBLEMS NOT ALERT	1
SICK PERSON NOT ALERT	1
SICK PERSON BLOOD PRESSURE ABNORMALITY	1
ASSIST CITIZEN	1
ALARM - MEDICAL	1
FIRE INVESTIGATION	1
UNCONSCIOUS / FAINTING NOT ALERT	1
HEART PROBLEMS CLAMMY OR COLD SWEATS	1
LACERATION NOT DANGEROUS HEMORRHAGE	1

Call Type	Total
-----------	-------



Moniteau County Emergency Dispatch

Monthly Report - Call Type Totals - California Rural Fire Protection District



Call Type	Total
TRAFFIC CRASH - UNKNOWN INJURIES	4
UNCONSCIOUS / FAINTING CHANGING COLOR	3
CHEST PAIN DIFFICULTY SPEAKING	2
TRAFFIC CRASH - NO INJURIES	1
TRANSFER	1
CHEST PAIN HEART ATTACK/ANGINA HISTORY	1
SEIZURES/CONVULSIONS DIABETIC	1
DIABETIC PROBLEMS UNCONSCIOUS	1
CARDIAC / RESPIRATORY ARREST NOT BREATHING	1
FALL NOT ALERT	1
TRAUMATIC INJURIES POSSIBLY DANGEROUS BODY AREA	1
UNCONSCIOUS / FAINTING	1
UNCONSCIOUS / FAINTING INEFFECTIVE BRTHNG	1
FALL NOT DANGEROUS BODY AREA	1
BREATHING PROBLEMS DIFFICULTY SPEAKING	1
HEAT EXPOSURE NOT ALERT	1

Call Type	Total
-----------	-------



Moniteau County Emergency Dispatch

Monthly Report - Call Type Totals - Jamestown Rural Fire Protection District



Call Type	Total
TRAFFIC CRASH - UNKNOWN INJURIES	2
ALARM - MEDICAL	1
SEIZURES/CONVULSIONS NOT SEIZING NOW	1
BREATHING VERIFIED	1
LIFT ASSIST NO REPORTED INJURIES	1
BREATHING PROBLEMS ABNORMAL	1
BREATHING	1
ASSIST CITIZEN	1
STRUCTURE FIRE -	1
BREATHING PROBLEMS DIFFICULTY SPEAKING	1
FIRE INVESTIGATION	1

Call Type	Total
-----------	-------



Moniteau County Emergency Dispatch

Monthly Report - Call Type Totals - Tipton Fire Department



Call Type	Total
ALARM - FIRE	3
FALL NOT DANGEROUS BODY AREA	2
TRAFFIC CRASH - INJURIES	1
LINE DOWN	1
ALLERGIC REACTION/BITE/STING DIFF SPEAKING	1
TRAFFIC CRASH - UNKNOWN INJURIES	1
ALLERGIC REACTION/BITE/STING NO DIFF BRTHNG/SWLWNG	1
FALL UNKNOWN STATUS	1
BREATHING PROBLEMS CLAMMY OR COLD SWEATS	1
STRUCTURE FIRE -	1
BREATHING PROBLEMS DIFFICULTY SPEAKING	1
TRAFFIC CRASH - NO INJURIES	1
CHEST PAIN NOT ALERT	1
ALARM - MEDICAL	1
UNCONSCIOUS / FAINTING CHANGING COLOR	1
CHOKING NOT ALERT	1

Call Type	Total
-----------	-------



Moniteau County Emergency Dispatch

Monthly Report - Call Type Totals - Fortuna Fire District



Call Type	Total
MEDICAL EMERGENCY	2
TRAFFIC CRASH - INJURIES	1
CHECK WELL BEING - PERSON DOWN	1
TRAFFIC CRASH - UNKNOWN INJURIES	1
ALARM - MEDICAL	1
STRUCTURE FIRE -	1

Call Type	Total
-----------	-------



Moniteau County Emergency Dispatch

Monthly Report - Call Type Totals - Moreau Fire Protection District



Call Type	Total
ALARM - FIRE	1
DUMPSTER FIRE	1
BREATHING PROBLEMS DIFFICULTY SPEAKING	1

Call Type	Total
-----------	-------



Moniteau County Emergency Dispatch

Monthly Report - Call Type Totals - Mid-MO Ambulance



Call Type	Total
BREATHING PROBLEMS DIFFICULTY SPEAKING	11
EMRG PT TRX FACILITY/CLINIC	10
SUSPECTED COVID-19 CASE	8
TRAFFIC CRASH - UNKNOWN INJURIES	7
ALARM - MEDICAL	6
MEDICAL EMERGENCY	6
SICK PERSON NOT ALERT	5
LIFT ASSIST NO REPORTED INJURIES	5
BREATHING PROBLEMS ABNORMAL BREATHING	4
CHECK WELL BEING -	4
SICK PERSON ALTERED LEVEL OF CONSCIOUSNESS	3
TRAFFIC CRASH - INJURIES	3
FALL NOT DANGEROUS BODY AREA	3
SICK PERSON TRANSPORTATION ONLY	3
EMRG PT TRX FACILITY/CLINIC EMERGENCY RESPONSE REQ	3
CHEST PAIN BREATHING NORMALLY	3
SICK PERSON ABNORMAL BREATHING	3
UNCONSCIOUS / FAINTING CHANGING COLOR	3
CHECK WELL BEING - PERSON DOWN	2
ABDOMINAL PAIN/PROBLEMS FEMALE PAIN ABOVE NAVEL	2
EMRG PT TRX FACILITY/CLINIC POSSIBLE MI	2
CHEST PAIN DIFFICULTY SPEAKING	2
SUICIDAL PERSON	2
SICK PERSON GENERAL WEAKNESS	2
BREATHING PROBLEMS CLAMMY OR COLD SWEATS	2
SICK PERSON NO PRIORITY SYMPTOMS	2
DRIVING VIOLATION	2
EMRG PT TRX FACILITY/CLINIC SEVERE PAIN	2
HEADACHE SUDDEN ONSET OF SEVERE PAIN	2
DIABETIC PROBLEMS UNCONSCIOUS	1
BREATHING PROBLEMS	1
DOMESTIC - VERBAL	1
ABDOMINAL PAIN/PROBLEMS MALE PAIN ABOVE NAVEL>35	1
SICK PERSON BLOOD PRESSURE ABNORMALITY	1
CHEST PAIN ABNORMAL BREATHING	1
SICK PERSON UNWELL/ILL	1
FALL	1
EMRG PT TRX FACILITY/CLINIC ABNORMAL BREATHING	1

Call Type	Total
FALL	1
CHEST PAIN NOT ALERT	1
FALL NOT ALERT	1
DIABETIC PROBLEMS ABNORMAL BEHAVIOR	1
ALLERGIC REACTION/BITE/STING DIFF SPEAKING	1
SICK PERSON PENIS PROBLEMS/PAIN	1
FALL UNKNOWN STATUS	1
STROKE ABNORMAL BREATHING	1
HEADACHE BREATHING NORMALLY	1
CARDIAC / RESPIRATORY ARREST NOT BREATHING	1
UNCONSCIOUS / FAINTING NOT ALERT	1
UNCONSCIOUS / FAINTING	1
CHEST PAIN CLAMMY / COLD SWEATS	1
EMRG PT TRX FACILITY/CLINIC NOT ALERT (ACUTE CHANGE)	1
HEART PROBLEMS CARDIAC HISTORY	1
CHOKING NOT ALERT	1
HEART PROBLEMS CHEST PAIN/ DISCOMFORT	1
SICK PERSON DIZZINESS/VERTIGO	1
HEART PROBLEMS CLAMMY OR COLD SWEATS	1
DIABETIC PROBLEMS ALERT & BEHAVING NORMALLY	1
HEAT EXPOSURE NOT ALERT	1
SICK PERSON OTHER PAIN (NON-OMEGA-LEVEL)	1
HOME INVASION -	1
DOMESTIC - PHYSICAL	1
LACERATION NOT DANGEROUS HEMORRHAGE	1
SICK PERSON VOMITING	1
LACERATION SERIOUS HEMORRHAGE	1
STROKE SUDDEN SPEECH PROBLEMS	1
ALLERGIC REACTION/BITE/STING NO DIFF BRTHNG/SWLWNG	1
BREATHING PROBLEMS NOT ALERT	1
MEDICAL EMERGENCY	1
TRAFFIC CRASH - NO INJURIES	1
CHEST PAIN HEART ATTACK/ANGINA HISTORY	1
TRAUMATIC INJURIES POSSIBLY DANGEROUS BODY AREA	1
MUTUAL AID	1
UNCONSCIOUS / FAINTING (NEAR) FAINTING EPISODE(S)	1
PSYCHIATRIC NON-SUICIDAL AND ALERT	1
UNCONSCIOUS / FAINTING INEFFECTIVE BRTHNG	1
SEIZURES/CONVULSIONS DIABETIC	1
SEIZURES/CONVULSIONS NOT SEIZING NOW BREATHING VERIFIED	1
HEART PROBLEMS ABNORMAL BREATHING	1



Moniteau County Emergency Dispatch

Monthly Report - EMS Status Zeros (No Ambulances Available)



Day	Date	Start Time	End Time	Total Time
Friday	08/06/2021	10:59:04	12:46:29	1:47:25
Friday	08/06/2021	18:44:59	18:50:18	0:05:19
Wednesday	08/11/2021	21:32:12	21:55:14	0:23:02
Thursday	08/12/2021	16:58:39	17:54:21	0:55:42
Saturday	08/21/2021	16:44:38	16:57:27	0:12:49
Saturday	08/21/2021	17:28:23	17:41:03	0:12:40
Saturday	08/21/2021	17:54:54	19:10:18	1:15:24
Saturday	08/21/2021	19:11:12	19:23:27	0:29:10
Wednesday	08/25/2021	12:01:18	12:12:06	0:10:48
Saturday	08/28/2021	08:13:09	08:21:09	0:08:00
Saturday	08/28/2021	08:52:41	08:53:59	0:01:18
Saturday	08/28/2021	10:40:27	10:52:17	0:11:50
Monday	08/30/2021	10:21:14	11:23:52	1:02:38
Monday	08/30/2021	11:36:29	11:45:57	0:09:28
Total	14			7:05:33

Month	Total Occurrences	Total Time
January		
February		
March		
April		
May		
June	12	4:54:10
July	15	5:48:05
August	14	7:05:33
September		
October		
November		
December		
Yearly Total	27	17:47:48

