

MONITEAU COUNTY EMERGENCY DISPATCH



BOARD OF DIRECTORS MINUTES

SEPTEMBER 15, 2020

1. CALL TO ORDER - 6:04PM

Present is Mike Volkart, Sarah Jones, Chris Allee and Director Kevin Wieberg, Joining virtually is Troy Eddy and Todd Miller (counsel). Guests present, Jeff Koerkenmeier

2. MINUTES & REPORTS RECEIVED AND FILED

a. Approval of Previous Minutes

A motion was made by Sarah Jones and seconded by Chris Allee to approve the previous meetings minutes; the Board unanimously voted in favor to approve the previous meetings minutes.

A motion was made by Chris Allee and seconded by Sarah Jones to approve the previous closed meetings minutes; the Board unanimously voted in favor to approve the previous closed meetings minutes.

b. Approval of Treasurer's Report

Revenue received for September totaled \$103,152.82

Expenditures for August totaled \$64,175.08. Balance of Checking account at end of August totaled \$498,016.23.

A motion was made by Chris Allee to approve the Treasurer's report as presented seconded by Troy Eddy; the Board unanimously voted in favor to approve the Treasurer's report as presented.

3. ACCOUNTS PAYABLE & PAYROLL

a. Accounts Payable

Director Kevin Wieberg presented accounts payable in the amount of \$19,192.77

b. Payroll Report

Director Kevin Wieberg presented payroll reports for 2020-17 \$18,002.58 and 2020-18 \$17,809.78

A motion was made by Chris Allee and seconded by Sarah Jones to approve the accounts payable and payroll reports; the Board unanimously voted in favor to approve accounts payable and payroll reports.

4. UNFINISHED BUSINESS

a. Phone System Upgrade

Director Kevin Wieberg presented a proposal from Centurylink to upgrade the current Call Processing software. Included in this proposal would eliminate the secondary office phone system and all calls would be able to be handled through the phone console rather than having some come through handsets at each console, among other upgrades. The proposal was presented at the previous meeting. Sarah Jones made a motion to approve the proposal for the phone system upgrade, seconded by Chris Allee and the Board unanimously approved the proposal for a total of \$42,165.35.

MONITEAU COUNTY EMERGENCY DISPATCH



b. CD Investment

Director Kevin Wieberg requested to invest \$20,000 from checking account into a 2 year CD that would be earmarked for future election costs. Chris Allee made a motion to move forward with the investment, Troy seconded the motion and the Board unanimously voted to approve investing \$20,000 into a 24month CD with the bank having the highest CD rate in Moniteau County.

5. NEW BUSINESS

a. Mortar Repair

Director Kevin Wieberg presented a proposal from Central Missouri Masonry Repair to fix numerous failing mortar joints on the building. Chris Allee made a motion to accept the proposal and Troy Eddy seconded; the Board unanimously approved the proposal for \$2,455 to repair mortar on the building.

6. DIRECTOR'S REPORT

Director Wieberg presented his report which is attached.

7. PUBLIC COMMENTS

No Public Comments

8. SCHEDULE FUTURE MEETINGS

a. October 13, 2020

9. ADJOURNMENT

With no further business to discuss, Chris Allee made a motion to adjourn the meeting at 7:06PM, this was seconded by Troy Eddy, the Board unanimously voted to adjourn.

**Moniteau County Emergency Dispatch
Monthly Report**



August, 2020



Moniteau County Emergency Dispatch

Monthly Report - Staffing / Training / Projects



Personnel	Current Staffing	Positions Available	Vacancies
Full Time	12		
Telecommunicators	9	8	-1
Communications Supervisor	1	1	0
GIS Manager	1	1	0
Director	1	1	0
Part Time	11		
Telecommunicators	9	10	1
Sign Installers	2	2	0

Training	Date	Attendance	Hours	Type
Callers and Mental Illness	11-Aug	8	1	In- Service

Projects	
Phone System Upgrade	Plans to update Intrado 911 CPE software to V7
Firewall / VPN	Awaiting CoMo to fix internet security issues - MWCT and CJIS
Radio Console Layout	Kevin to work on radio console layout
ACE Application	On Hold
NAWAS Phone	Assigned to CMD1
Update Intersections in CAD	Corey and Stacey working to update ESN - Reached out to Omnigo
Dual Tone Button TFD/FFD	Pending
Status Lights	Pending
Second Headset to Consoles	Pending
Radio TX chirp	Pending
Highpoint Repeater	Pending
Base Station Replacements	Assigned to CMD1
ALI CONF and UNC visual	SDR to release in next quarter's update to G2it3
Data Room	This project has been placed on hold. Will coordinate with CoMo to relocate fiber.

Budget Snapshot	Current Month	Year to Date
Budget	\$68,000.00	\$544,000.00
Revenue	\$81,431.89	\$634,868.72
Expenditures	\$64,175.08	\$528,135.74
Variance	\$17,256.81	\$106,732.98



Moniteau County Emergency Dispatch

Monthly Report - Activity



Date	Activity
Monday, August 03, 2020	FT Employee Interview
Wednesday, August 05, 2020	Phone System Upgrade Meeting with Centurylink
Thursday, August 06, 2020	Teach Module of PST @ JCPD (Radio Technology)
Thursday, August 06, 2020	OWS Monthly Test
Tuesday, August 11, 2020	Kevin off in Morning - Training in Tipton (ACLS)
Tuesday, August 11, 2020	In-Service Training
Wednesday, August 12, 2020	Meeting with Red Cross
Wednesday, August 12, 2020	Centurylink Demo
Thursday, August 13, 2020	Related Services Meeting - Moniteau Health Dept
Thursday, August 13, 2020	Moniteau 911 Board Meeting
Friday, August 14, 2020	FT Employee Interview
Tuesday, August 18, 2020	Staff Meeting
Thursday, August 20, 2020	MO 911 Service Board Grant Meeting
Monday, August 24, 2020	RHSOC Meeting
Friday, August 28, 2020	Dispatch 1 PC Replaced



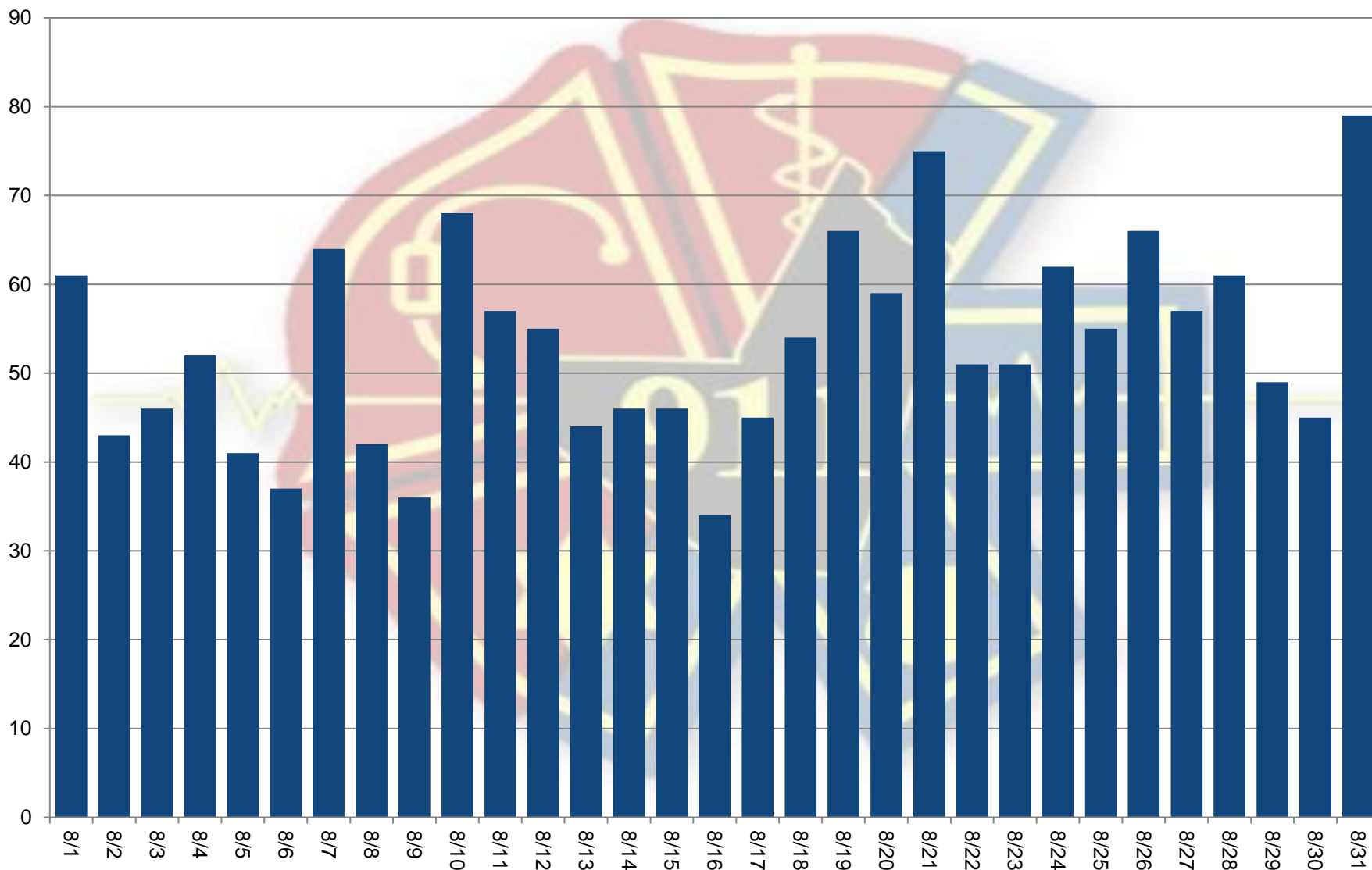
Moniteau County Emergency Dispatch

Monthly Report - Daily CAD Events



Date	#
8/1	61
8/2	43
8/3	46
8/4	52
8/5	41
8/6	37
8/7	64
8/8	42
8/9	36
8/10	68
8/11	57
8/12	55
8/13	44
8/14	46
8/15	46
8/16	34
8/17	45
8/18	54
8/19	66
8/20	59
8/21	75
8/22	51
8/23	51
8/24	62
8/25	55
8/26	66
8/27	57
8/28	61
8/29	49
8/30	45
8/31	79

1647





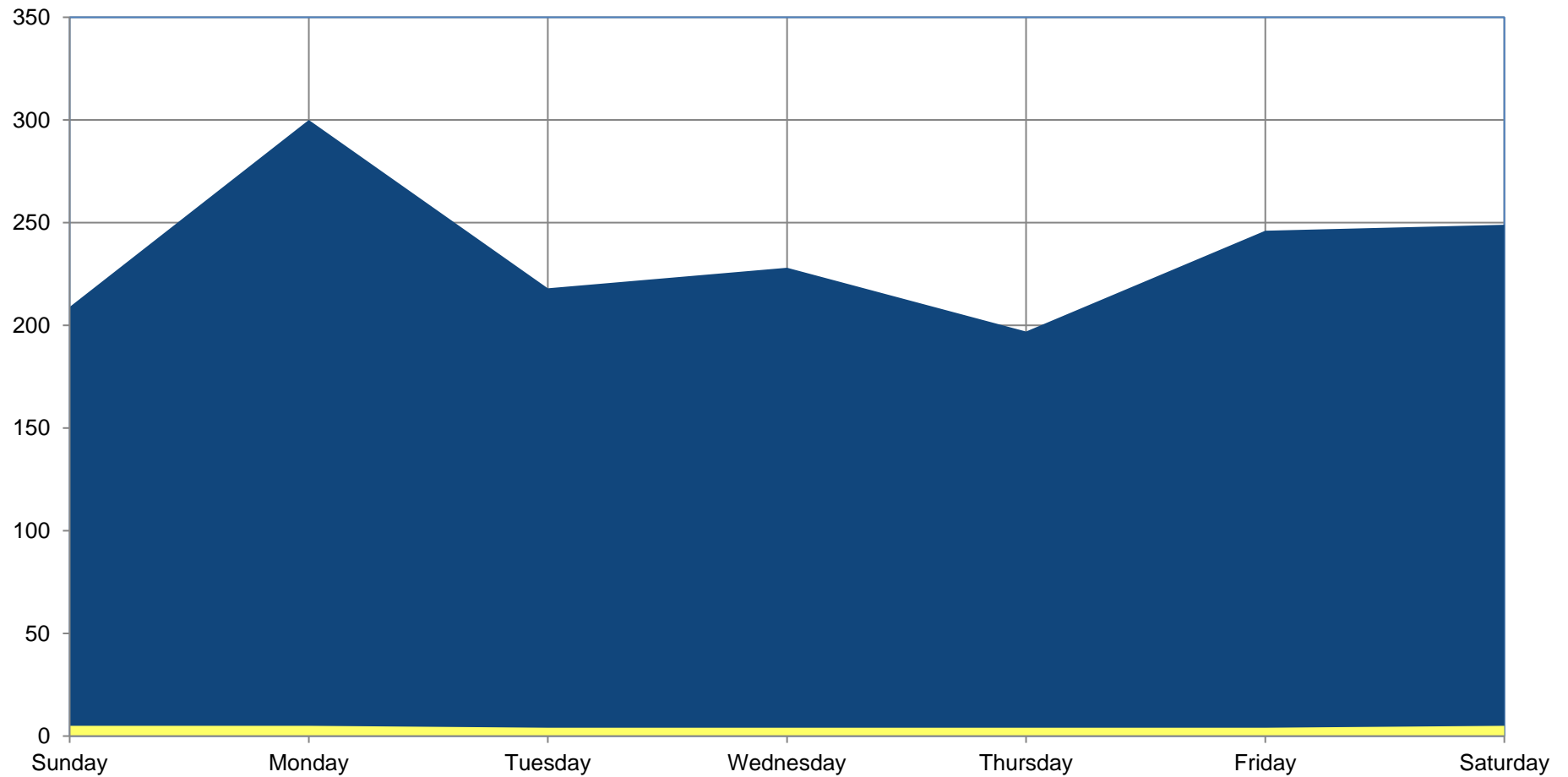
Moniteau County Emergency Dispatch

Monthly Report - Daily CAD Events



Totals by Day	
Day	Total
Sunday	209
Monday	300
Tuesday	218
Wednesday	228
Thursday	197
Friday	246
Saturday	249
Total	1647

Total Days	
Day	Total
Sunday	5
Monday	5
Tuesday	4
Wednesday	4
Thursday	4
Friday	4
Saturday	5
Total Days	31



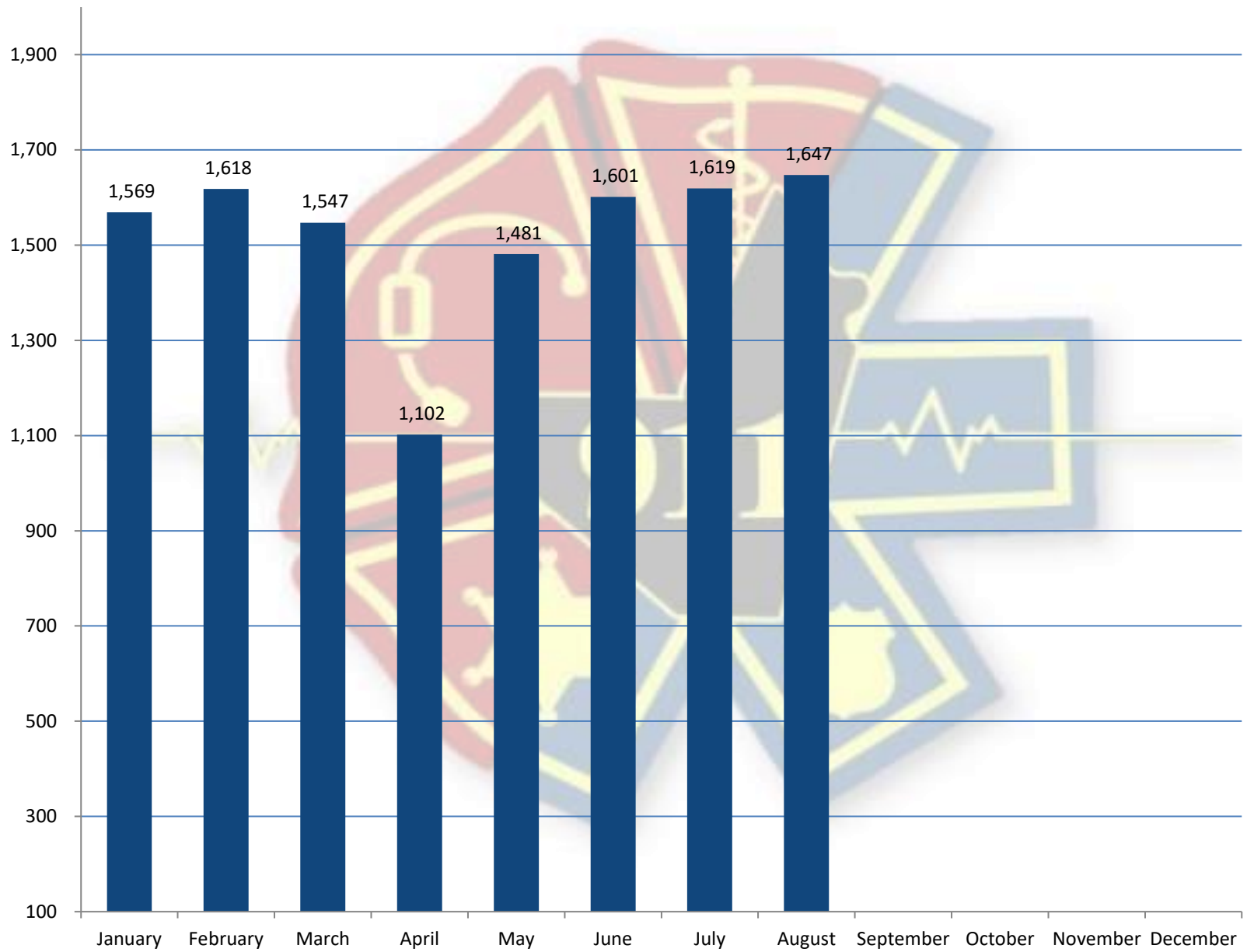


Moniteau County Emergency Dispatch

Monthly Report - Monthly CAD Events



January	1,569
February	1,618
March	1,547
April	1,102
May	1,481
June	1,601
July	1,619
August	1,647
September	
October	
November	
December	
2019 Year to Date	12,184





Moniteau County Emergency Dispatch

Monthly Report - Hourly Events

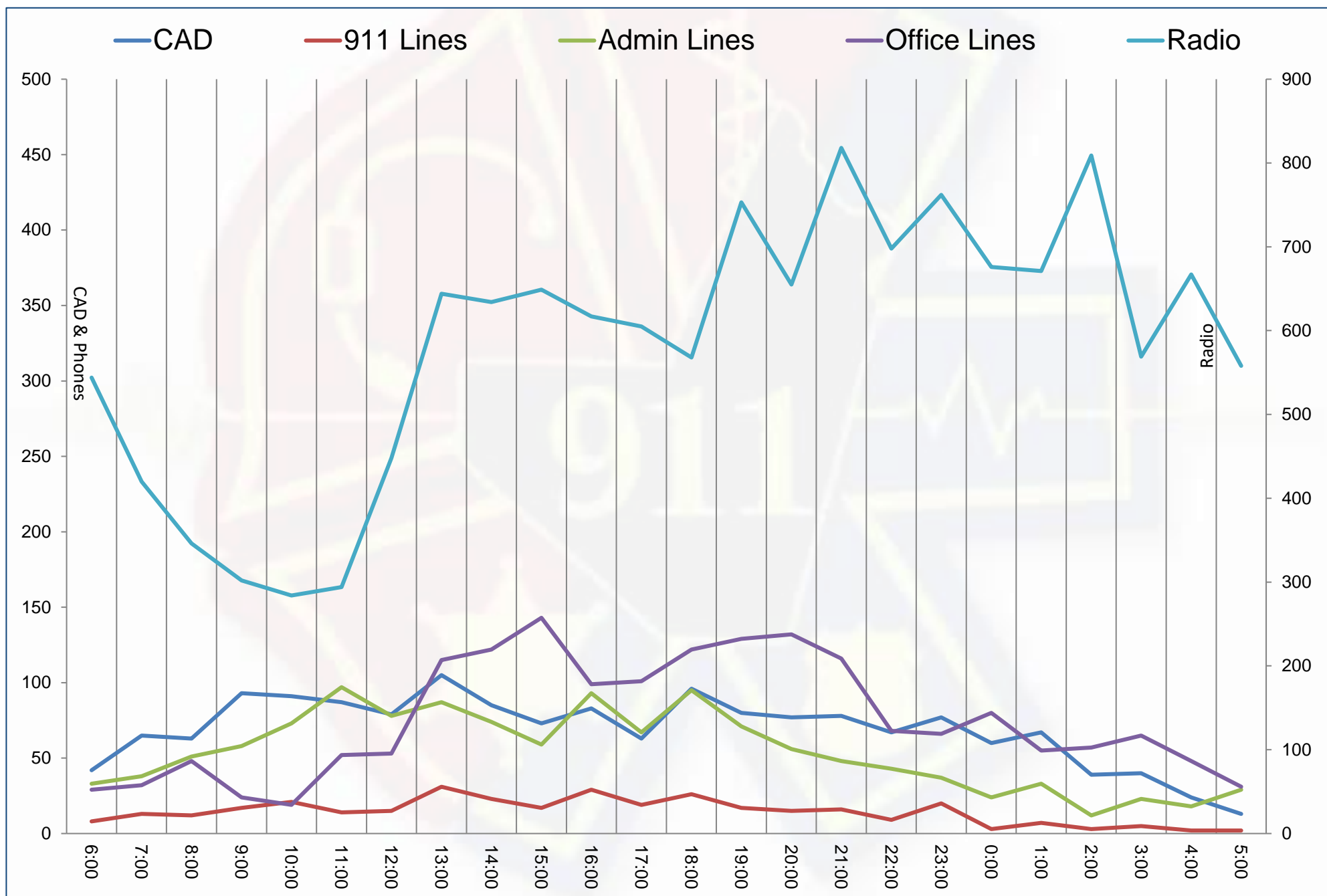


Time		CAD	911 Lines	Admin Lines	Office Lines	Radio
6:00:00	06:59:59	42	8	33	29	544
7:00:00	07:59:59	65	13	38	32	420
8:00:00	08:59:59	63	12	51	48	346
9:00:00	09:59:59	93	17	58	24	302
10:00:00	10:59:59	91	21	73	19	284
11:00:00	11:59:59	87	14	97	52	294
12:00:00	12:59:59	79	15	78	53	448
13:00:00	13:59:59	105	31	87	115	644
14:00:00	14:59:59	85	23	74	122	634
15:00:00	15:59:59	73	17	59	143	649
16:00:00	16:59:59	83	29	93	99	617
17:00:00	17:59:59	63	19	67	101	605
18:00:00	18:59:59	96	26	95	122	568
19:00:00	19:59:59	80	17	71	129	753
20:00:00	20:59:59	77	15	56	132	655
21:00:00	21:59:59	78	16	48	116	818
22:00:00	22:59:59	67	9	43	68	698
23:00:00	23:59:59	77	20	37	66	762
0:00:00	00:59:59	60	3	24	80	676
1:00:00	01:59:59	67	7	33	55	671
2:00:00	02:59:59	39	3	12	57	809
3:00:00	03:59:59	40	5	23	65	569
4:00:00	04:59:59	24	2	18	48	667
5:00:00	05:59:59	13	2	29	31	558
TOTAL		1647	344	1297	1806	13991



Moniteau County Emergency Dispatch

Monthly Report - Hourly Events





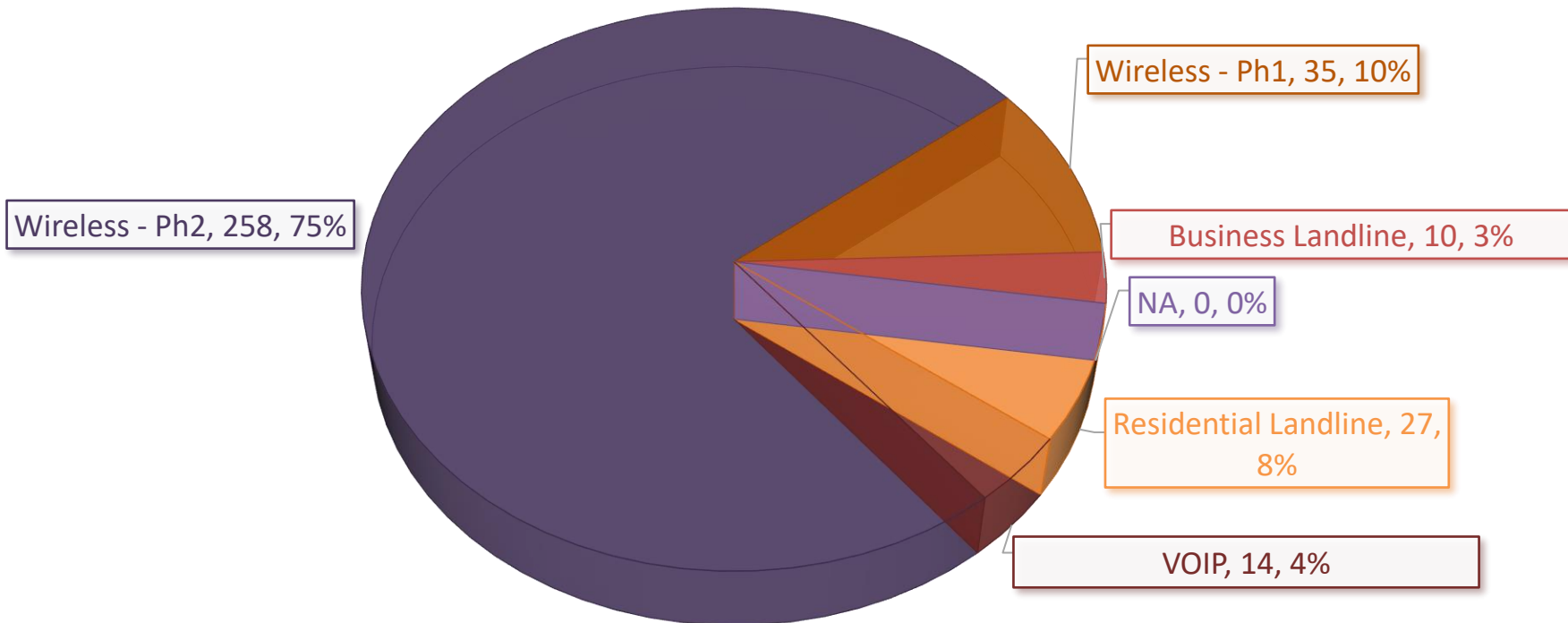
Moniteau County Emergency Dispatch

Monthly Report - Monthly Incoming 911



	January	February	March	April	May	June	July	August	September	October	November	December
911 Voice Received												
Business Landline	10 3%	8 2%	14 5%	12 4%	7 2%	17 4%	9 2%	10 3%				
NA	1 0%	0 0%	1 0%	2 1%	0 0%	33 7%	19 5%	0 0%				
Residential Landline	29 9%	20 6%	20 7%	20 7%	50 14%	34 7%	27 6%	27 8%				
VOIP	12 4%	21 6%	14 5%	19 7%	25 7%	17 4%	8 2%	14 4%				
Wireless - Ph2	239 73%	204 62%	221 73%	185 69%	249 68%	278 60%	304 73%	258 75%				
Wireless - Ph1	37 11%	52 16%	32 11%	31 12%	33 9%	84 18%	49 12%	35 10%				
TOTAL	328	305	302	269	364	463	416	344				
Abandoned 911 Calls	27	26	31	31	47	70	52	38				
911 Text Received	0	16	4	0	1	3	5	3				

August





Moniteau County Emergency Dispatch

Monthly Report - MULES Entries



	January	February	March	April	May	June	July	August	September	October	November	December
Protection Orders												
Entered - ETO	0	0		0			0	0				
Served - DPO	2	3		3			5	2				
Cancel - XPO	1	2		0			0	0				
Cleared - CPO	2	0		0			2	0				
Stolen Vehicles/ Items												
Stolen License Plates - EL	0	1		1			1	1				
Stolen Vehicle - EV	3	1		0			3	0				
Stolen Vehicle Cleared- CV	1	0		0			2	1				
Stolen Gun - EG	0	0		0			0	0				
Stolen Gun Cleared - CG	0	0		0			0	0				
Stolen Articles Entered - EA	0	0		0			0	0				
Persons												
Warrants Entered - EW, EW-C, EW-J	26	25		17			55	47				
Warrants Canceled - XW	7	6		0			3	4				
Warrants Cleared - CW	18	21		14			24	35				
Missing Persons Entered - EM, EMJ	0	0		1			0	1				
Missing Persons Cleared- CM	0	0		0			0	1				
Other Entries & Modifications	229	101		229			243	317				
Total Entries	289	160		265			338	409		0	0	0



Moniteau County Emergency Dispatch

Monthly Report - MULES Inquiries



	January	February	March	April	May	June	July	August	September	October	November	December
Inquiries												
Criminal Histories- QMH	114	94		80			101	106				
Vehicle Queries - QV, QVR	491	754		450			696	536				
Person Queries - QW, QWR, QWRT	1396	1341		1193			1503	1358				
Other Inquiries	742	637		718			752	816				
Messages												
Administrative Messages Sent - AM	195	115		102			143	150				
Warrants Located - LW	18	16		9			24	0				
Vehicles Located - LV	0	0		0			0	2				
Warrants Detained - DW	11	18		14			21	16				
Warrant Hit Request (outside County Warrant) - YQ	55	54		55			96	46				
Warrant Hit Response (Moniteau County Warrants confirmation from other Jurisdictions) - YR	38	72		45			87	76				
Total Inquiries and Messages	3060	3101		2666			3423	3107				



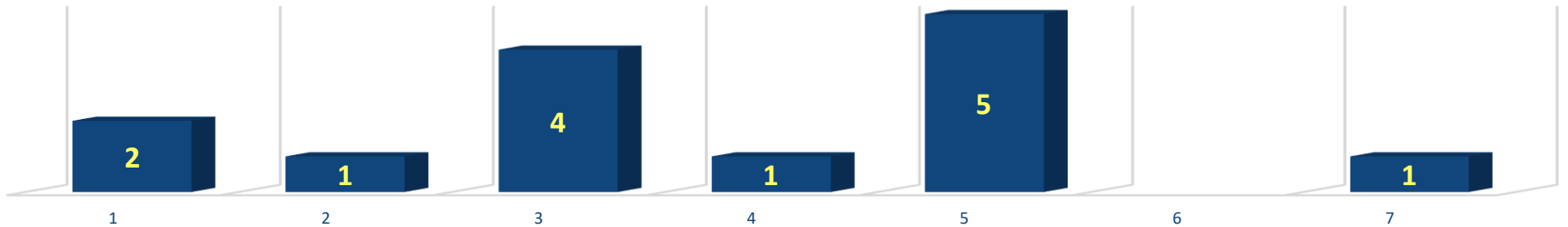
Moniteau County Emergency Dispatch

Monthly Report - 911 Transfers



	January	February	March	April	May	June	July	August	September	October	November	December
Boone County		0	2	2	2		1	2				
Cole County		2		2	1	3	5	1				
Cooper County	3	2	6	2	3	4	5	4				
Miller County	3	0			1	2		1				
Morgan County	3	3	3	2	5	4	2	5				
Pettis County			2				4					
Troop F	3	3	2			1	2	1				

AUGUST



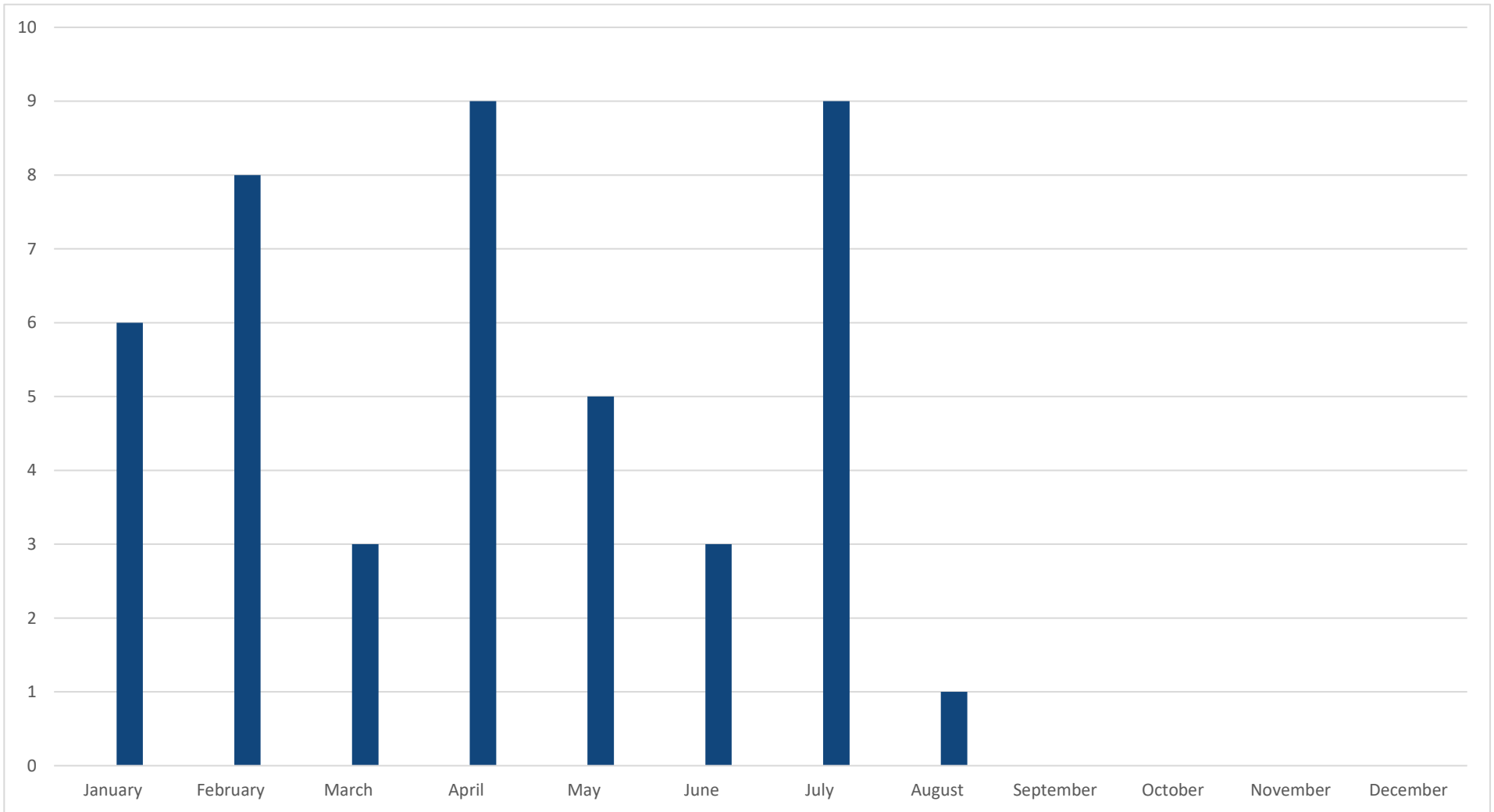


Moniteau County Emergency Dispatch

Monthly Report - Addressing



	January	February	March	April	May	June	July	August	September	October	November	December
Addressing												
Addresses Assigned	6	8	3	9	5	3	9	1				



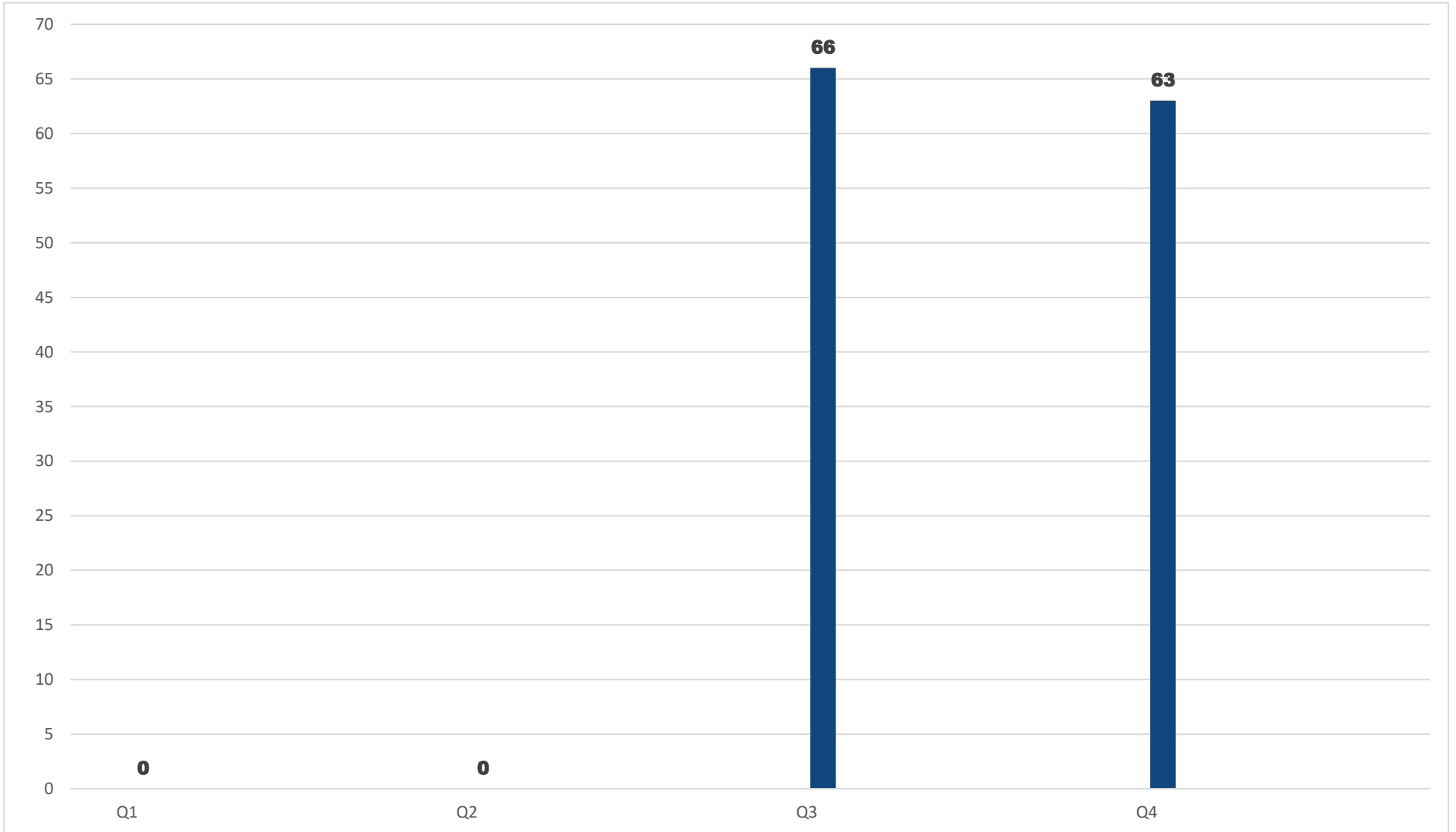


Moniteau County Emergency Dispatch

Monthly Report - Replaced Missing Road Signs

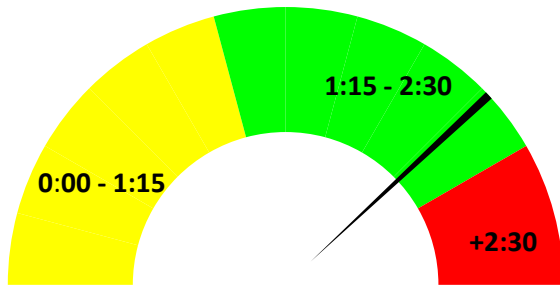


	Q1	Q2	Q3	Q4
Road Signs				
Road Signs Replaced	-	-	66	63



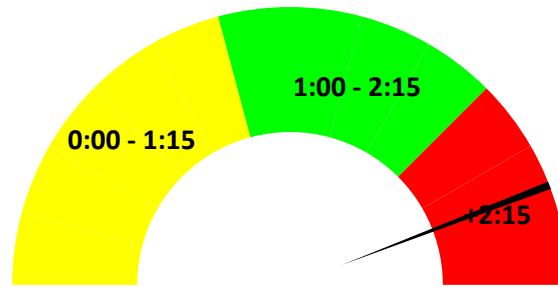


Moniteau County Emergency Dispatch
Monthly Report - ProQA Time to Que



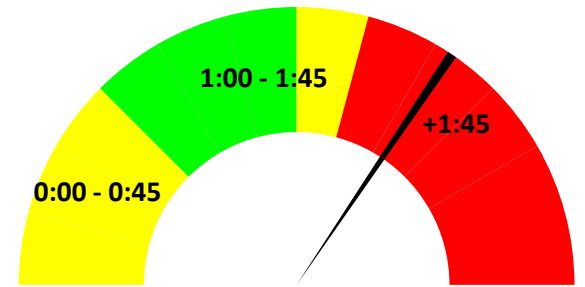
OMEGA

Total 1



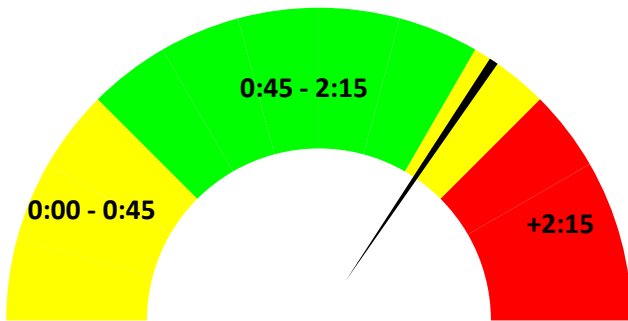
ALPHA

Total 27



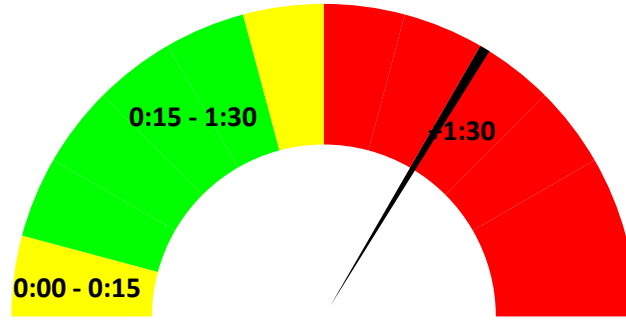
BRAVO

Total 5



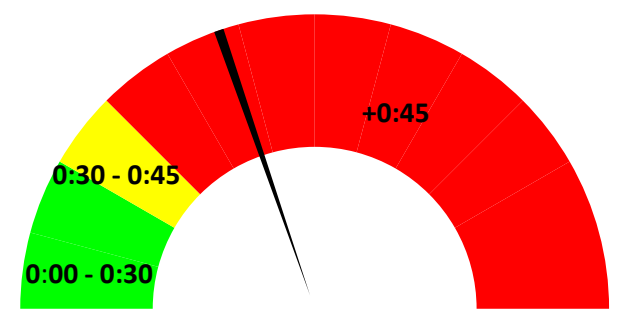
CHARLIE

Total 7



DELTA

Total 17



ECHO

Total 3

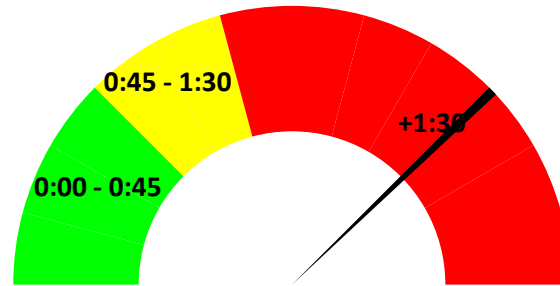


Moniteau County Emergency Dispatch

Monthly Report - Time to Dispatch

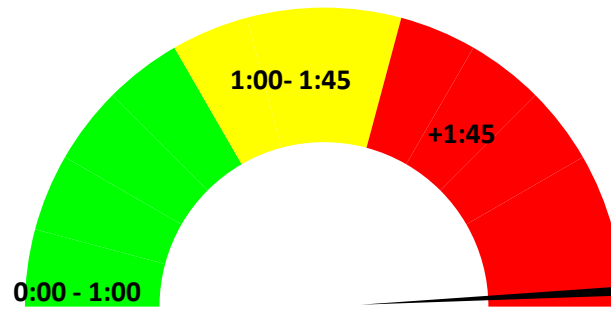


This report reflects the time a High Priority Call (Priority 1 & 2) takes to assign to a unit. This report does not include medical calls for service as they are captured in ProQA.



Priority 1

Total 34



Priority 2

Total 27



Moniteau County Emergency Dispatch

Monthly Report - Quality Assurance

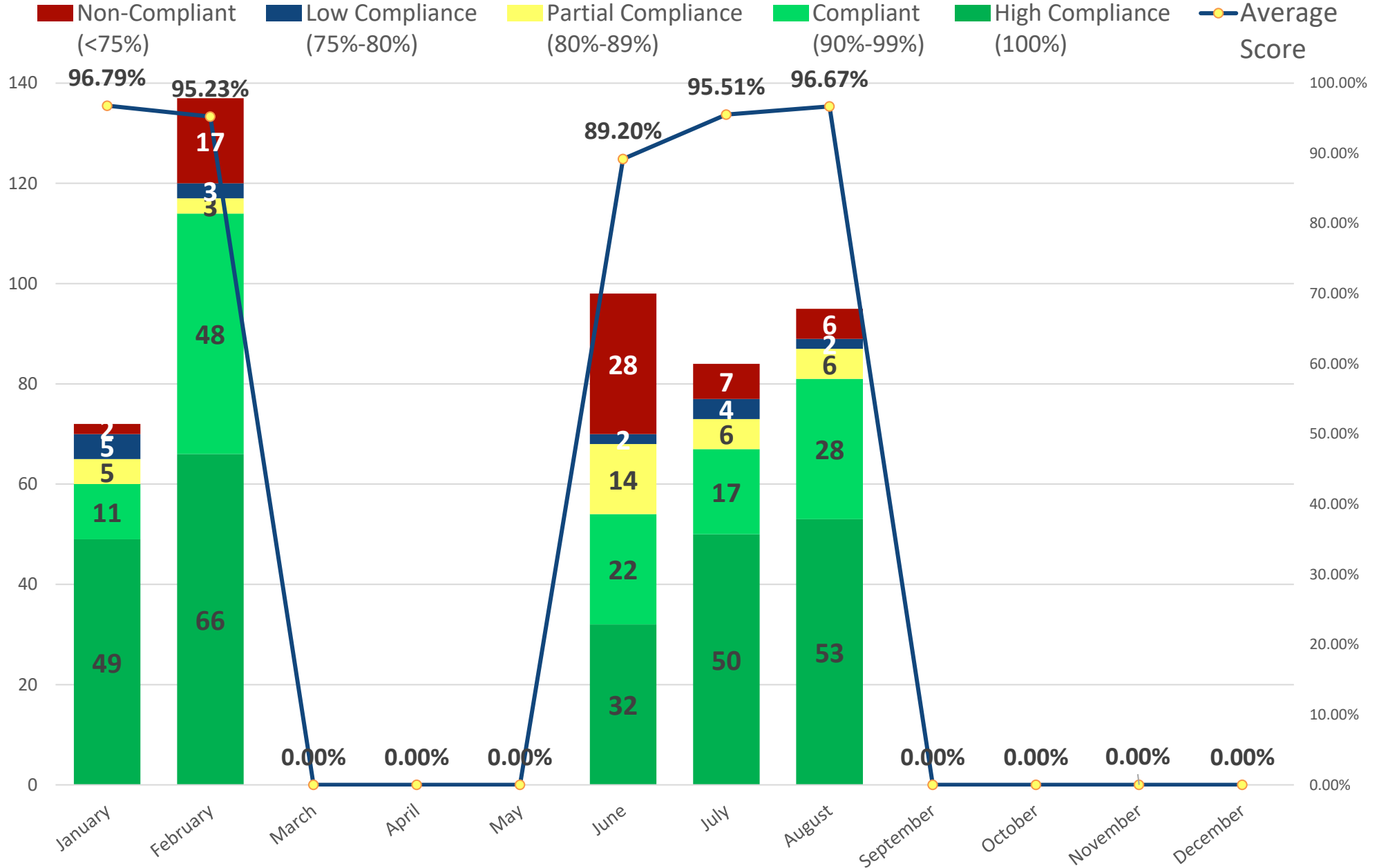


	January	February	March	April	May	June	July	August	September	October	November	December		
Average Score	96.79%	95.23%	QA Temporarily Suspended to focus on COVID-19 Planning and Operations			89.20%	95.51%	96.67%						
High Compliance (100%)	49	66				32	50	53						
Compliant (90%-99%)	11	48				22	17	28						
Partial Compliance (80%-89%)	5	3				14	6	6						
Low Compliance (75%-80%)	5	3				2	4	2						
Non-Compliant (<75%)	2	17				28	7	6						
Total Assessments	72	137				98	84	95						
Call Taking											98.05%			
LAW	33	37				16	15	13						
FIRE	1	2				4	4	2						
EMS	22	60	53	11	13									
Dispatching								97.69%						
LAW	9	11	5	14	5									
Traffic Stops					24									
FIRE / EMS	4	5	4	5	2									
Warrant								99.00%						
Entry	3	22	8	42	37									



Moniteau County Emergency Dispatch

Monthly Report - Quality Assurance





Moniteau County Emergency Dispatch

Monthly Report - Quality Assurance - ProQA Performance Benchmarks



Agency: Moniteau County Emergency Dispatch

Date Range: 8/1/2020 ... 8/31/2020

	Percent	Number of Cases
High Compliance	54%	7
Compliant	31%	4
Partial Compliance	0%	0
Low Compliance	8%	1
Non-Compliant	8%	1
Totals	100%	13

█ - Indicates Accreditation Level

Percentage of Deviations	Critical	Major	Moderate	Minor
Case Entry	0.00%	0.00%	0.00%	0.00%
Chief Complaint	7.69%	3.85%	0.00%	0.00%
Key Questions	0.00%	0.00%	1.24%	0.00%
Final Coding	7.69%	0.00%	0.00%	0.00%
Dispatch Life Support	0.00%	0.00%	5.26%	5.56%
Customer Service	0.00%	0.00%	0.00%	0.00%
Total Accreditation Acceptance	0.78%	0.38%	1.05%	0.32%

These accreditation standards relate to the following:
ED-Q Performance Standards – Edition 10

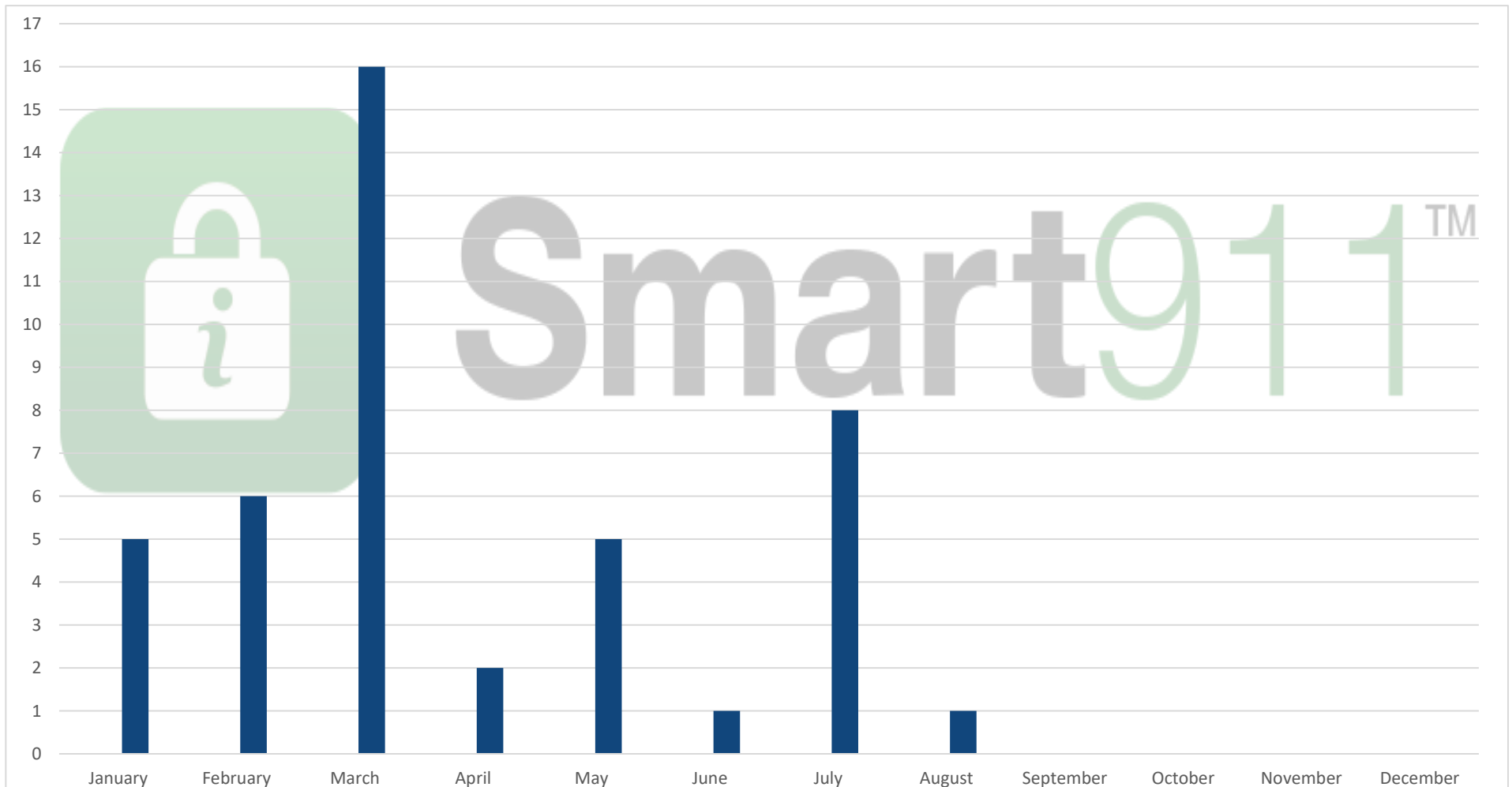


Moniteau County Emergency Dispatch

Monthly Report - Smart911 Profiles Created



	January	February	March	April	May	June	July	August	September	October	November	December
Smart911												
Moniteau County Profiles Created	5	6	16	2	5	1	8	1				



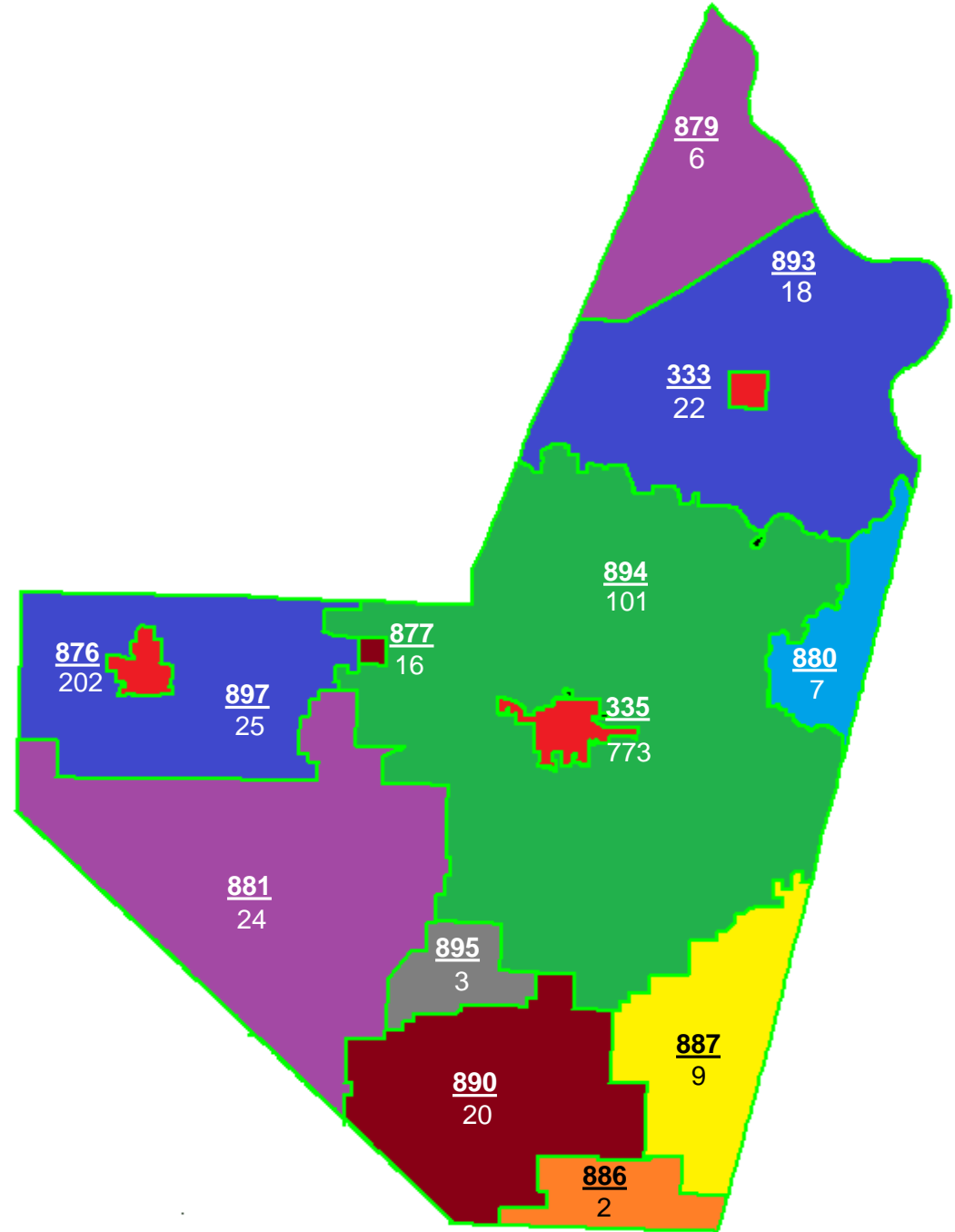


Moniteau County Emergency Dispatch

Monthly Report - Calls for Service by Emergency Service Zone



Emergency Service Zone #	Total Calls for Service
333	22
335	773
876	202
877	16
879	6
880	7
881	24
886	2
887	9
890	20
893	18
894	101
895	3
897	25
Address Overrides	419
Total Calls for Service	1647



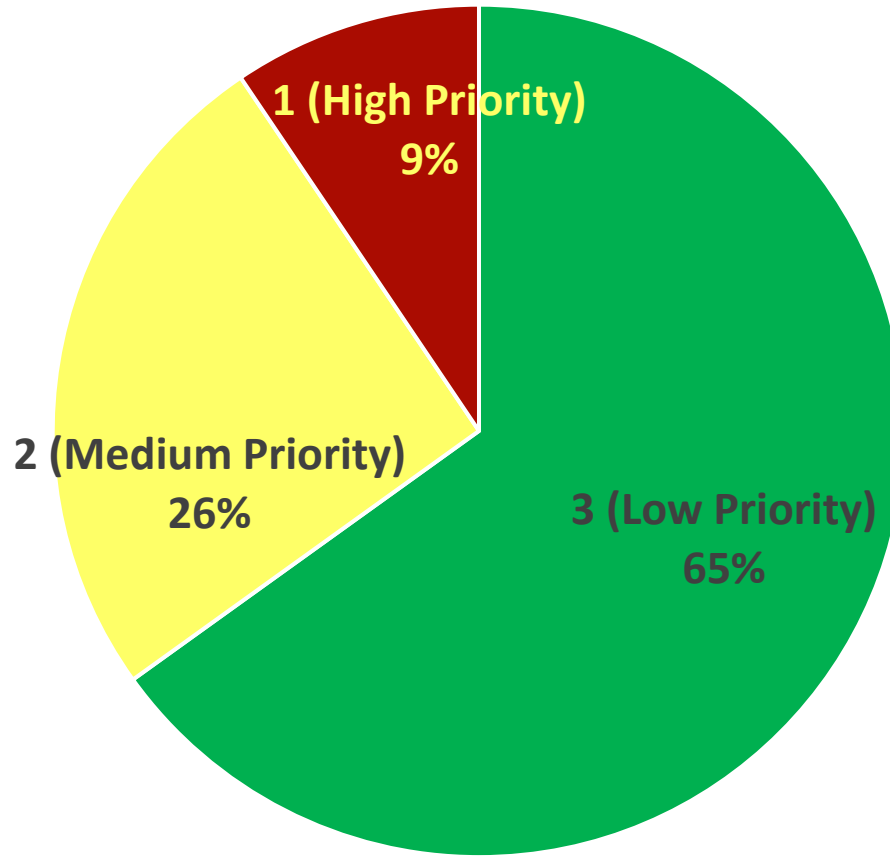


Moniteau County Emergency Dispatch

Monthly Report - Calls for Service Acuity Levels



	January	February	March	April	May	June	July	August	September	October	November	December
3 (Low Priority)	1074	1077	1030	779	1014	1038	1020	1068				
2 (Medium Priority)	371	408	397	193	351	427	422	418				
1 (High Priority)	124	133	120	130	116	136	132	155				





Moniteau County Emergency Dispatch

Monthly Report - Dispositions



	BUILDING SECURE/NO STATUS CHANGE	ASSIST OTHER AGENCY .	DISREGARDED	DOCUMENT SERVED	EMS TRANSPORTED	FIRE - MITIGATED/RESOLVED .	HANDLE BY DISPATCH .	HANDLED BY OFFICER	MUTUAL AID	NO ACTION	NO CONTACT	DECEASED/ NO TRANSPORT	PATIENT REFUSED	REFERRED TO ANOTHER AGENCY	REPORT TAKEN	SUMMONS ISSUED	UNFOUNDED	WARNING
Moniteau County Sheriffs Office	78	18	12	40			16	420		28	126	2		4	66	50	54	262
California Police Department	68	546	4				18	472		22	22	2		2	50	10	32	70
Tipton Police Department	32						4	178		4	16	2			44	4	16	56
Jamestown Police Dept	2							4								8	2	16
California City Fire Department						72		2		2		2						2
Tipton Fire Department	2		4			24				2	2	2						4
California Rural Fire Protection District			2			16				6								2
Jamestown Fire Protection District			2			4					2		2					
Fortuna Fire Protection District	2		2			20				6	2							4
Moreau Fire Protection District			2			4						2						
MidMO Ambulance	8		26		160		2			14		4	40					



Moniteau County Emergency Dispatch

Monthly Report - CAD Event Totals



	January	February	March	April	May	June	July	August	September	October	November	December	YTD Total
Moniteau County Sheriffs Office	570	556	584	322	403	559	535	591					4120
California Police Department	772	868	741	509	709	673	620	667					5559
Tipton Police Department	188	209	210	164	211	237	203	180					1602
Jamestown Police Dept	10	5	17	11	8	16	23	16					106
California Fire Department	54	47	33	18	30	24	30	41					277
Tipton Fire Department	20	26	15	11	16	20	17	21					146
California Rural Fire District	30	25	24	21	21	18	13	13					165
Jamestown Rural Fire District	11	10	6	6	1	12	8	5					59
Fortuna Fire District	21	22	18	10	10	10	11	19					121
Moreau Fire District	7	3	3	2	10	3	4	5					37
MidMO 10	88	86	85	82	99	82	71	84					677
MidMO 20	50	56	37	44	51	30	27	39					334
MidMO 30 / 31	11	6	4	7	6	5	10	4					53



Moniteau County Emergency Dispatch

Monthly Report - Call Type Totals - Moniteau County Sheriffs Office



Call Type	Total
TRAFFIC STOP	179
PAPER SERVICE	75
MESSAGE	45
FOLLOW UP	33
PRISONER TRANSPORT	30
DRIVING VIOLATION	22
CHECK WELL BEING -	22
TRAFFIC HAZARD -	20
STRANDED MOTORIST	17
DISTURBANCE -	16
THEFT -	13
VEHICLE CHECK	13
ASSIST OTHER AGENCY -	12
DOMESTIC -	12
ASSIST CITIZEN	11
ABANDONED VEHICLE	8
TRAFFIC CRASH -	7
WARRANT SERVICE	7
INVESTIGATION	7
HARASSMENT/THREAT -	7
SUSPICIOUS ACTIVITY	6
BUILDING CHECK -	6
LOST/FOUND PROPERTY	6
PROPERTY DAMAGE -	6
ALARM -	5
911 HANG UP/OPEN LINE -	5
ANIMAL COMPLAINT	5
SUICIDAL PERSON	4
MISCELLANEOUS ADMIN DUTY	4
CIVIL ISSUE	3
OTHER LAW	3
TRESPASSING -	3
ASSAULT -	2
BURGLARY -	2
MISSING PERSON -	2

Call Type	Total
DRUG ACTIVITY	1
STRUCTURE FIRE -	1
CHILD CUSTODY	1
CIVIL STANDBY	1
ABUSE/ABANDONMENT/NEGLECT	1
UNCONSCIOUS / FAINTING (NEAR)	1
ANIMAL BITES/ATTACKS	1
LINE DOWN	1
BUILDING DAMAGE/COLLAPSE	1
CARDIAC / RESPIRATORY ARREST	1
BOMB -	1
COMPLIANCE CHECK	1
UNKNOWN PROBLEM	1
VEHICLE FIRE -	1
EXTRA PATROL	1
CONSERVATION	1
SEXUAL OFFENSE -	1
SICK PERSON	1



Moniteau County Emergency Dispatch

Monthly Report - Call Type Totals - California Police Department



Call Type	Total
BUILDING CHECK -	284
TRAFFIC STOP	50
ORDINANCE VIOLATION -	44
MESSAGE	41
FOLLOW UP	33
ASSIST CITIZEN	32
VEHICLE CHECK	21
DISTURBANCE -	20
ANIMAL COMPLAINT	18
CHECK WELL BEING -	16
THEFT -	11
ALARM -	10
TRAFFIC HAZARD -	9
DOMESTIC -	9
PROPERTY DAMAGE -	7
DRIVING VIOLATION	6
INVESTIGATION	6
SUSPICIOUS ACTIVITY	6
TRESPASSING -	5
ESCORT	5
ABANDONED VEHICLE	4
LOST/FOUND PROPERTY	4
ASSIST OTHER AGENCY -	4
BREATHING PROBLEMS	4
MISCELLANEOUS ADMIN DUTY	4
911 HANG UP/OPEN LINE -	4
SICK PERSON	3
LINE DOWN	3
CIVIL ISSUE	3
CHEST PAIN	3
TRAFFIC CRASH -	3
CIVIL STANDBY	2
ABUSE/ABANDONMENT/NEGLECT	2
OTHER LAW	2
UNKNOWN PROBLEM	2
WARRANT SERVICE	2
HEMORRHAGE	2
LOCK OUT	2
MEDICAL EMERGENCY	2
ASSAULT -	2

Call Type	Total
INDECENCY/LEWDNESS	1
DRUG ACTIVITY	1
BURGLARY -	1
GAS ODOR/LEAK -	1
EXTRA PATROL	1
PROWLER	1
PRISONER TRANSPORT	1
CHILD CUSTODY	1
CONSERVATION	1
STRANDED MOTORIST	1
CARDIAC / RESPIRATORY ARREST	1
STRUCTURE FIRE -	1
UNCONSCIOUS / FAINTING	1
SUICIDAL PERSON	1
FALL	1
SUSPECTED COVID-19 CASE	1
ANIMAL BITES/ATTACKS	1
HARASSMENT/THREAT -	1



Moniteau County Emergency Dispatch

Monthly Report - Call Type Totals - Tipton Police Department



Call Type	Total
TRAFFIC STOP	37
FOLLOW UP	25
MESSAGE	25
DRIVING VIOLATION	12
ASSIST CITIZEN	11
ANIMAL COMPLAINT	10
DISTURBANCE -	10
ASSIST OTHER AGENCY -	7
ORDINANCE VIOLATION -	6
LOCK OUT	5
DOMESTIC -	5
CHECK WELL BEING -	4
TRAFFIC CRASH -	4
HARASSMENT/THREAT -	4
ANIMAL BITES/ATTACKS	3
SUSPICIOUS ACTIVITY	3
DRUG ACTIVITY	3
UTILITIES -	2
TRESPASSING -	2
THEFT -	2
PROPERTY DAMAGE -	2
CIVIL ISSUE	2
STROKE	2
CHILD CUSTODY	2
911 HANG UP/OPEN LINE -	2

Call Type	Total
CHEST PAIN	1
TRAUMATIC INJURIES	1
LINE DOWN	1
ESCORT	1
UNCONTROLLABLE JUVENILE	1
CIVIL STANDBY	1
INVESTIGATION	1
SICK PERSON	1
BREATHING PROBLEMS	1
STRANDED MOTORIST	1
BURGLARY -	1
ALARM -	1
MISSING PERSON -	1
SUICIDAL PERSON	1
GAS ODOR/LEAK -	1



Moniteau County Emergency Dispatch

Monthly Report - Call Type Totals - Jamestown Police Department



Call Type	Total
TRAFFIC STOP	13
MESSAGE	3
DRIVING VIOLATION	1
FOLLOW UP	1
OTHER LAW	1

Call Type	Total
-----------	-------



Moniteau County Emergency Dispatch

Monthly Report - Call Type Totals - California Fire Department



Call Type	Total
LINE DOWN	8
BREATHING PROBLEMS	5
MEDICAL EMERGENCY	3
UTILITIES -	2
ALARM -	2
UNCONSCIOUS / FAINTING	2
CHEST PAIN	2
ABDOMINAL PAIN/PROBLEMS	2
GAS ODOR/LEAK -	1
SUSPECTED COVID-19 CASE	1
STROKE	1
HEMORRHAGE	1
TRAUMATIC INJURIES	1
HEMORRHAGE/LACERATION	1
PROPERTY DAMAGE -	1
CARDIAC / RESPIRATORY ARREST	1
STRUCTURE FIRE -	1
BUILDING DAMAGE/COLLAPSE	1
TRAFFIC CRASH -	1
FALL	1
FIRE INVESTIGATION	1
MESSAGE	1
PRISONER TRANSPORT	1
LIFT ASSIST	1

Call Type	Total
-----------	-------



Moniteau County Emergency Dispatch

Monthly Report - Call Type Totals - California Rural Fire Protection District



Call Type	Total
TRAFFIC CRASH -	2
MISCELLANEOUS ADMIN DUTY	2
STRUCTURE FIRE -	2
DIABETIC PROBLEMS	1
ALARM -	1
NATURAL COVER FIRE -	1
CHECK WELL BEING -	1
FALL	1
VEHICLE FIRE -	1
HEART PROBLEMS	1
MESSAGE	1

Call Type	Total
-----------	-------



Moniteau County Emergency Dispatch

Monthly Report - Call Type Totals - Jamestown Rural Fire Protection District



Call Type	Total
STRUCTURE FIRE -	2
STROKE	2
CHECK WELL BEING -	1

Call Type	Total
-----------	-------



Moniteau County Emergency Dispatch

Monthly Report - Call Type Totals - Tipton Fire Department



Call Type	Total
TRAFFIC CRASH -	5
NATURAL COVER FIRE -	2
STRUCTURE FIRE -	2
BREATHING PROBLEMS	2
MEDICAL EMERGENCY	2
GAS ODOR/LEAK -	1
CHEST PAIN	1
STROKE	1
ABDOMINAL PAIN/PROBLEMS	1
SUICIDAL PERSON	1
ANIMAL COMPLAINT	1
LINE DOWN	1
SICK PERSON	1

Call Type	Total
-----------	-------



Moniteau County Emergency Dispatch

Monthly Report - Call Type Totals - Fortuna Fire District



Call Type	Total
TRAFFIC CRASH -	5
MEDICAL EMERGENCY	5
STRUCTURE FIRE -	2
NATURAL COVER FIRE -	2
SUICIDAL PERSON	1
CHILD CUSTODY	1
FALL	1
GAS ODOR/LEAK -	1
LACERATION	1

Call Type	Total
-----------	-------



Moniteau County Emergency Dispatch

Monthly Report - Call Type Totals - Moreau Fire Protection District



Call Type	Total
STRUCTURE FIRE -	3
CHEST PAIN	1
HEART PROBLEMS	1

Call Type	Total
-----------	-------



Moniteau County Emergency Dispatch

Monthly Report - Call Type Totals - Mid-MO Ambulance



Call Type	Total
BREATHING PROBLEMS	16
SICK PERSON	14
MEDICAL EMERGENCY	13
EMRG PT TRX FACILITY/CLINIC	12
CHEST PAIN	8
STROKE	7
SUSPECTED COVID-19 CASE	6
FALL	6
TRAFFIC CRASH -	5
ALARM -	5
TRAUMATIC INJURIES	4
STRUCTURE FIRE -	4
CHECK WELL BEING -	4
UNCONSCIOUS / FAINTING (NEAR)	3
ABDOMINAL PAIN/PROBLEMS	3
HEART PROBLEMS	3
UNCONSCIOUS / FAINTING	2
HEMORRHAGE	2
DIABETIC PROBLEMS	1
LIFT ASSIST	1
HEMORRHAGE/LACERATION	1
MISCELLANEOUS ADMIN DUTY	1
SUICIDAL PERSON	1
SEIZURES/CONVULSIONS	1
911 HANG UP/OPEN LINE -	1
ASSIST CITIZEN	1
LACERATION	1
CARDIAC / RESPIRATORY ARREST	1
DISTURBANCE -	1
FIRE INVESTIGATION	1

Call Type	Total
-----------	-------