



THE FINEST FOLK 24/7!

***Folk Music Notebook** brings you the finest folk 24 hours a day, 7 days a week. Our diverse playlist offers classic folk songs and artists as well as contemporary singer-songwriters who carry on the traditions. In addition to the music, we also feature a number of shows featuring some of the most respected radio hosts in North America and beyond.<-*

COMING UP THIS WEEK ON FOLK MUSIC NOTEBOOK:

Check out some of these shows that are coming up this week, and be sure to visit our website at www.FolkMusicNotebook.com for our complete schedule.

(click on the date below to go directly to programs for each day)

**Click HERE to contribute to the Folk Music Notebook
"Tip Jar"**

- **MONDAY
SEPTEMBER**

- 8TH
- TUESDAY
SEPTEMBER
9TH
- WEDNESDAY
SEPTEMBER
10TH
- THURSDAY
SEPTEMBER
11TH
- FRIDAY
SEPTEMBER
12TH
- SATURDAY
SEPTEMBER
12TH
- SUNDAY
SEPTEMBER
14TH



THE MORNING SHOW

Monday through Friday 7am to noon ET / 4am to 9am PT

Host: Ron Olesko

Your daily wake up call! Tune in for folk songs to start your day!

MONDAY SEPTEMBER 8TH

TRADITIONS

*Monday at 3pm ET / noon PT
(encore of Sunday evening's broadcast)*

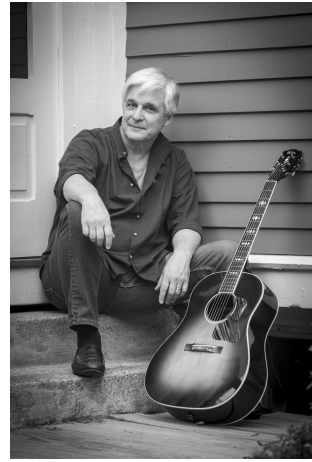
Guest: REES SHAD

Singer-songwriter **Rees Shad** joins host **Ron**

Olesko discuss his upcoming benefit tour for the *Guy Clark Foundation*. Simulcast with thanks to WFDU-FM, the non-commercial radio station owned by Fairleigh Dickinson University in Teaneck, NJ.

Host **Ron Olesko**

([Click here for Ron's archive page](#))



SING OUT! RADIO MAGAZINE

Monday at 7pm ET / 4pm PT

with an encore Tuesday at 5am ET / 2am PT

This week: "In Concert, Part 1"

This week and next, we'll revisit some great live music we presented in previous shows, music recorded live in concerts across the years. There are selections recorded in Greenwich Village, some great Cajun and Zydeco, and banjo music from the Newport Folk Festival. Live and in concert ... this week on The Sing Out! Radio Magazine.

Host **Tom Druckenmiller**.

MOSTLY FOLK

Monday at 8pm ET / 5pm PT

with an encore Tuesday at 6am ET / 3am PT

Guest: HELENE CRONIN

Helene Cronin is a story-singer whose songs are deeply rooted in personal perspective but with universal appeal, resonating with genuine emotion. She is known for her story telling, tight lyrics and raw vulnerability. Kerrville New Folk Winner 2018



Host: **Artie Martello**

([Click here for Artie's archive page](#))

TUESDAY SEPTEMBER 9TH



FOLK TALK

Tuesday at noon ET / 9am PT

with an encore at midnight ET / 9pm PT

Guest: ROB McNURLIN

Host: **Rik Palieri** speaks with Rob McNurlin about his new film *"From the Cowboy's Boot Heel"*

NEW AND NOTEWORTHY

Tuesday at 1pm ET / 10am PT

with an encore at 1am ET / 10pm PT

A sampler of the latest songs entering the Folk Music Notebook playlist.



THE MATT WATROBA SHOW

Tuesday at 7pm ET / 4pm PT

with an encore Wednesday at 4am ET / 1am PT

This week: "Songs of Time and Being on the Journey"

Host **Matt Watroba** has hosted and produced thousands of radio shows since 1986 and is a member of Folk Alliance International's *Folk DJ Hall of Fame*.

ANOTHER RADIO SHOW with James Lee Stanley

*Tuesday at 9pm ET / 6pm PT
with an encore Wednesday at 6am ET / 3am PT*



Acclaimed singer-songwriter **James Lee Stanley** hosts this weekly show offering a blend of outstanding singer-songwriters as well as a few original songs from his own song bag!

WEDNESDAY SEPTEMBER 10TH



LIVE FROM CAFFÈ LENA

*Wednesday at 7pm ET / 4pm PT
with encores with an encore Thursday at 3am
ET / midnight PT and Sunday at 1pm ET / 11am
PT*

Guest: TBA

A performance recorded on the stage of *Caffè Lena* in Saratoga Springs, New York - the longest continuously operating folk music venue in the United States.

FOLK PLUS

*Wednesday at 8pm ET/ 5pm PT
with an encore Thursday at 4am ET / 1am PT*

Each week host Angela Page explores a theme with the music and artists that she calls Folk...plus some! A member of Folk Alliance International's *Folk DJ Hall of Fame*.





RADIO NOWHERE WORLDWIDE

*Wednesday at 9pm ET / 6pm PT
with encore Friday at noon ET / 9am PT*

Featuring music and songwriters from around the world including Ireland, the UK, Scandinavia, Germany, Austria and more.

Host **Joltin Joe (Pszonek)**

[\(Click here for Joltin' Joe's archive page\)](#)

THURSDAY SEPTEMBER 11TH

RADIO NOWHERE WEEKEND EDITION

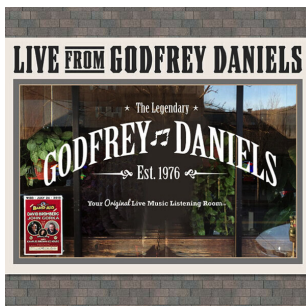
Thursday at 5am ET / 2am PT

**Encore broadcast of last
Saturday's program.**



Host **Joltin' Joe (Pszonek)** serves up more great music and songwriters from around the world including Ireland, the UK, Scandinavia, Germany, Austria and more.

[\(Click here for Joltin' Joe's archive page\)](#)



LIVE FROM GODFREY DANIELS

*Thursday at 8pm ET / 5pm PT
with an encore Friday at 4am ET / 1am PT and
Sunday at 2pm ET / 11am PT*

This week: Archival performances from John Sebastian, Richard Shindell, Sloan Wainwright Trio, The Heartbeats, Mollie O'Brien and Nina Gerber, Kevin Burke and Michael O'Domhnaill, Iain Matthews, Abby Gardner.

Host **Dave Fry** (also the founder of *Godfrey Daniels*) shares rare archival recordings made during the 40+ year history of one of the iconic music venues in the country - *Godfrey Daniels* in Bethlehem, Pennsylvania!

GORD'S GOLD

***Thursday at 9pm ET / 6pm PT
with an encore Friday at 5am ET / 2am PT***

This week: "Look at All the Lonely People"



The themes of this week's *Gord's Gold* are politics, loneliness, the Celts, Bluegrass, and eschatology. You don't know what eschatology means? Your homework is to look it up before the show streams. Yes, this will be on the test.

Host: **Gordon Nash**



THE FOLK CLUB

***Thursday at 10pm ET / 7pm PT
with an encore Friday at 6am ET / 3am PT***

***Guests: Julie and Amanda from THE
CARTWHEEL PENNIES***

Coming from the Cathedral city of Ely, Cambridgeshire, in the U.K. with host **Stuart Green** catches up with Julie and Amanda from 'The Cartwheel Pennies' who perform a 'live' track for the show.

([Click here for The Folk Club archive page](#))

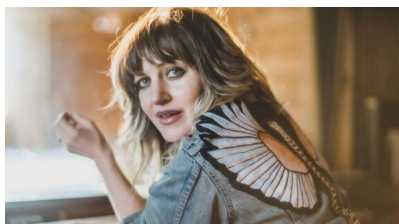
FRIDAY SEPTEMBER 12TH

QUEENS OF THE BLUES

Friday at 6pm ET/ 3pm PT

This week: "Unwanted Child"

Queens of the Blues with **Gina Coleman** from the band, **Misty Blues**, explores the fertile landscape of female artists who were at the foundation of early recorded blues and celebrate music created by female blues artists up to present times. This show, entitled "*Unwanted Child*" is entirely about **Clara McDaniel**.



FOLKSTAGE

*Friday at 7pm ET / 4pm PT
with an encore Saturday at 1pm ET /
10am PT*

Guest: ANAIS MITCHELL (from the archives)

Anais Mitchell, currently of Bonny Light Horsemen, appeared solo on Folkstage years before her *Hadestown* musical became a Broadway phenomenon. Hear her distinctive voice as captured in 2010.

Hosted by **Marilyn Rea Beyer**.

THE MIDNIGHT SPECIAL

*Friday at 8pm ET / 5pm PT
with an encore Saturday at 2pm ET / 11am PT*

A member of Folk Alliance International's *Folk DJ*



Hall of Fame, **Marilyn Rea Beyer** hosts the nation's longest running folk show.



ROCKIN' THE REZ

Friday at 10pm ET / 7pm PT

with an encore Saturday at 6am ET / 3am PT

Left Coast eclectic mix of music from the personal library of host **Joel Rafael**.

SATURDAY SEPTEMBER 12TH

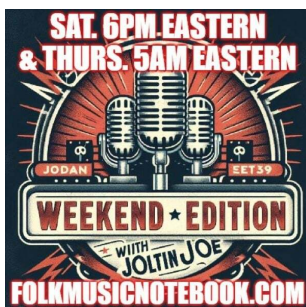
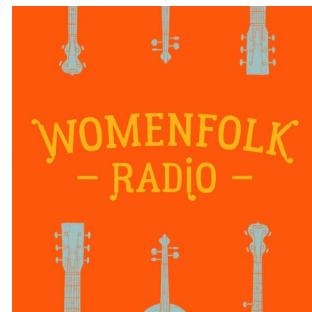
WOMENFOLK

Saturday at 11am ET / 8am PT

with an encore Monday at 5am ET / 2amPT

Guest:

A weekly radio show highlighting the best in folk/americana music from women and non-binary artists. Host: **Ellen Stanley**



WEEKEND EDITION

***Saturday at 6pm ET / 3pm PT with an encore
broadcast next Thursday at 5am ET / 2am PT***

It's the weekend woوو! Let's loosen up and check out some of the newest music from the folk, blues & Americana worlds!

[\(Click here for Joltin' Joe's archive page\)](#)

MICHAEL JOHNATHON'S

WOODSONGS OLD-TIME RADIO HOUR

Saturday at 8pm ET / 5pm PT

with an encore Sunday at noon ET / 9am PT



**Guests: PALMYRA and TIDALWAVE
ROAD**

A live audience celebration of grassroots music and the artists who make it. Recorded in Lexington, Kentucky and hosted by folksinger **Michael Johnathon**.



FOLKSCENE

Saturday at 9pm ET / 6pm PT

with an encore Sunday at 5am ET / 2am PT

Guest: ANA CANONI

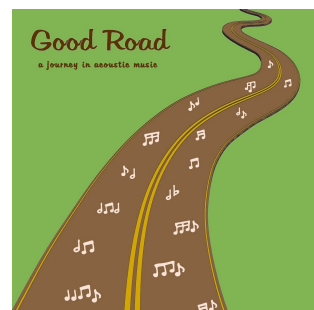
Anna Canoni, granddaughter of **Woody Guthrie** and the President of *Woody Guthrie Publications*, discusses the new release of *"Woody At Home - Volumes 1 & 2"*.

Woody Guthrie's raw and intimate home recordings have been released for the very first time ever in a two-volume collection, *Woody At Home – Volumes 1 & 2*. This collection contains 22 unreleased recordings, including 13 previously never-before-heard Woody Guthrie songs. These rare recordings include *T_his Land is Your Land*, *featuring new verses*, and *the only known Guthrie recording of Deportee_* in existence.

GOOD ROAD

Saturday at 10pm ET / 7pm PT

Following the passing of **Dan Maher**, **Katrina Knight** has taken over as host of this popular



program. Katrina was Dan's producer for Good Road, in addition to her work festival coordinator for for the Three Rivers Folklife Society's annual Tumbleweed Music Festival, held in August in Richland, Washington. With over 40 years of experience with a variety of folk music organizations, she also listened to Dan on the radio for over 20 years, learning a thing or two about how selecting good music to play on the radio.

SUNDAY SEPTEMBER 14TH



THE MIKE HARDING FOLK SHOW

Sunday at 6am ET / 3am PT

Archival program from 2016

Broadcasting from a stone shed in the Yorkshire Dales, the iconic folk radio host **Mike Harding** will take you into the world of folk.

THE FOLK CONNECTION

Sunday at 9am ET / 6am PT

From Israel! Host **Menachem Vinegrad** has been a radio presenter on *Radio Upper Galilee Israel* for many years. With his wife Yehudit, Menny also produces the *Jacob's Ladder International Folk Festival*, which he began 48 years ago after organizing the Jacob's Ladder Folk Club.

[\(Click here for Menachem Vinegrad's archive page\)](#)



HELEN LEICHT'S ACOUSTIC SUNDAY



***Sunday at 10am ET / 7am PT with an
encore broadcast at 9pm ET / 6pm PT***

Acclaimed Philadelphia WXPB radio veteran **Helen Leicht** presents a weekly show that will highlight the more acoustic side of artists, both the legacy musicians of our time, and the new and independent artists of the next era. The show will include the best of new artists, a cause Helen has championed, and been

recognized by the RIAA, since her earliest radio days.

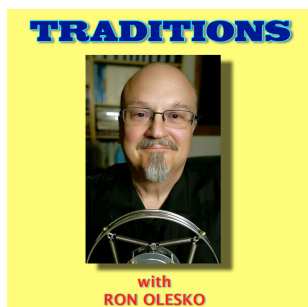
[\(Click here for Helen Leicht's archive page\)](#)

MY HIGHWAY HOME

***Sunday at 6pm ET / 3pm PT
with encores Monday morning at 1am ET /
Sunday 10pm PT and Wednesday at noon ET /
9am PT***

Guest: MICHAEL JERLING

Acclaimed singer-songwriter **Joe Jencks** interviews Michael Jerling, a singer-songwriter based in upstate New York. Michael Jerling has been writing, recording and performing his own songs for over fifty years. His baritone voice is backed up with consummate skill on six and twelve string guitars, harmonica and mandolin, all buoyed by his dry sense of humor. (Heard the 2nd Sunday of every month.)_



TRADITIONS

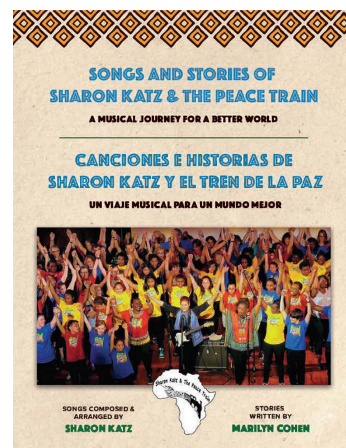
***Sunday at 10pm ET / 7pm PT
with an encore Monday at 3pm ET / noon PT***

**Guest: TERRY KITCHEN & SHARON
KATZ**

Award-winning Boston singer/songwriter Terry Kitchen pares songwriting to its most essential - a voice, a guitar, a story, a glimmer of hope. Whether in concert or on record, Kitchen brings his songs to life with gentle wisdom, a sharp eye for detail, and unexpected humor. His latest album *We All Dream* is an intimate portrait of who we are at this critical moment, and why we all need each other.



Sharon Katz is an international composer, performer and recording artist with many songs and albums on the Grammy© ballot. She has just released a new songbook - *Songs and Stories of Sharon Katz & The Peace Train*



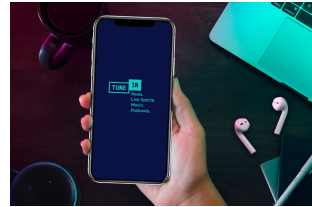
Nelson Mandela gave South African musician and music therapist Sharon Katz a mission: use your music to create a world based on fairness and justice for all people. And that's what she did in composing the songs in this book and in partnering with Zulu singer Nonhlanhla Wanda to create The Peace Train.

Host **Ron Olesko**. Simulcast with thanks to WFDU-FM, the non-commercial radio station owned by Fairleigh Dickinson University in Teaneck, NJ.

([Click here for Ron Olesko's archive page](#))

How are we doing? Click [HERE](#) to take a short survey

Now available on the **TuneIn** radio app in addition to our own free apps! Enjoy **FOLK MUSIC NOTEBOOK** anytime, day or night, on your favorite listening device!



Thank you to everyone who has helped support **Folk Music Notebook** by contributing to our tip jar. If you would like to help us carry on our mission to bring you the finest in folk 24 hour a day, please visit our tip jar at **FOLK MUSIC NOTEBOOK TIP JAR**

Thanks for your support,
Your friends at **www.FolkMusicNotebook.com**



©2025 The Folk Music Notebook | 84 North Demarest Avenue, Bergenfield, NJ 07621, US

[Web Version](#)

[Forward](#)

[Unsubscribe](#)

Powered by
[GoDaddy Email Marketing](#)®