



Performances from the stages of Caffè Lena & Godfrey Daniels will fill the air New Year's Eve & New Year's Day

Your seat is reserved for **Folk Music Notebook's** virtual New Year's Eve Party as we once again offer a marathon celebration featuring back-to-back programs from our two acclaimed series -**Live From Caffè Lena** and *Live From Godfrey Daniels*.

Beginning at noon eastern time on December 31st, and running until 8pm-eastern time on January 1st, you will hear concert performances from a diverse lineup of artists and musical styles, a sampling of the great music you hear daily on **Folk Music Notebook**.

The idea for this event harkens back to the golden age of radio in the 1940s, when stations would ring in the New Year with live remote broadcasts from big bands performing in night clubs and music halls across the nation. We will be celebrating with your folk and acoustic favorites - classic artists as well as up and coming talent from the contemporary folk scene.

Folk Music Notebook is honored to bring you weekly shows from these iconic venues. [Caffè Lena](#) in Saratoga Springs is the longest running folk venue in the

United States and has been recognized by the Grammy Foundation for their contributions to the development of American music. **Godfrey Daniels** in Bethlehem, Pennsylvania opened their doors in 1976 and has grown from a little-known haven for lovers of live folk music to an internationally acclaimed club on the “folk circuit.”

*We are keeping the exact schedule a surprise, so tune in to find out who is taking the stage at any given moment! Your front row seat is reserved and there is no cover charge!! Celebrate with us as we ring in the New Year on **Folk Music Notebook!***

Click [HERE](#) to contribute to the Folk Music Notebook "Tip Jar"

THE FINEST FOLK 24/7!

Folk Music Notebook brings you the finest folk 24 hours a day, 7 days a week. Our diverse playlist offers classic folk songs and artists as well as contemporary singer-songwriters who carry on the traditions. In addition to the music, we also feature a number of shows featuring some of the most respected radio hosts in North America and beyond.

COMING UP THIS WEEK ON FOLK MUSIC NOTEBOOK:

Check out some of these shows that are coming up this week, and be sure to visit our website at www.FolkMusicNotebook.com for our complete schedule.

(click on the date below to go directly to programs for each day)

-
- [MONDAY](#)
[DECEMBER](#)
[29th](#)
 - [TUESDAY](#)
[DECEMBER](#)
[31st](#)
 - [WEDNESDAY](#)
[DECEMBER](#)
[31st](#)
 - [THURSDAY](#)

JANUARY

1st

- FRIDAY

JANUARY

2nd

- SATURDAY

JANUARY

3rd

- SUNDAY

JANUARY

4th

THE MORNING SHOW

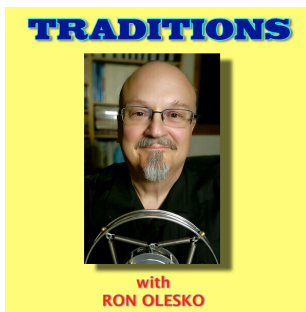
Monday through Friday 7am to noon ET / 4am to 9am PT

Host: Ron Olesko

Your daily wake up call! Tune in for folk songs to start your day!



MONDAY DECEMBER 29th



TRADITIONS

Monday at 3pm ET / noon PT

(encore of Sunday evening's broadcast)

This week: "Ron's Favorites of 2025"

Host **Ron Olesko** looks at some of his favorite recordings released in 2025.

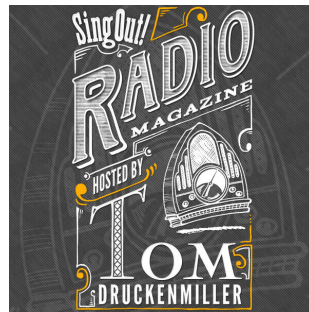
([Click here for Ron's archive page](#))

SING OUT! RADIO MAGAZINE

Monday at 7pm ET / 4pm PT
with an encore Tuesday at 5am ET / 2am PT

This week: "Music From Home, Part 1"

This week and next we'll feature musicians who have been inspired by music from their home region and are quite proud of it. We'll hear Gordon Bok, The McIntosh County Shouters, Tyler Grant and Robin Kessinger, The Critten Hollow String Band along with many more. No place like home ... this week on The Sing Out! Radio Magazine.
Host **Tom Druckenmiller**.



MOSTLY FOLK

Monday at 8pm ET / 5pm PT
with an encore Tuesday at 6am ET / 3am PT

Mostly Folk is a one hour music program originating in the Catskill Mountains NY. , playing newly released albums, classic folk, indie folk and bluegrass music as well as some traditional music that may or may not be true to the genre. That's why it's called *Mostly Folk*.

Host: **Artie Martello**
([Click here for Artie's archive page](#))

TUESDAY DECEMBER 31st

NEW AND NOTEWORTHY

Tuesday at 1pm ET / 10am PT
with an encore at 1am ET / 10pm PT



A sampler of the latest songs entering the Folk Music Notebook playlist.



THE MATT WATROBA SHOW

Tuesday at 7pm ET / 4pm PT

with an encore Wednesday at 4am ET / 1am PT

This week: "Some of Matt's Favorites from 2025 plus a Toast to Those Who Are Gone"

Host **Matt Watroba** has hosted and produced thousands of radio shows since 1986 and is a member of Folk Alliance International's *Folk DJ Hall of Fame*.

ANOTHER RADIO SHOW with James Lee Stanley

Tuesday at 9pm ET / 6pm PT

with an encore Wednesday at 6am ET / 3am PT



Acclaimed singer-songwriter **James Lee Stanley** hosts this weekly show offering a blend of outstanding singer-songwriters as well as a few original songs from his own song bag!

WEDNESDAY DECEMBER 31st



FOLK MUSIC NOTEBOOK NEW YEAR'S CELEBRATION

**LIVE FROM CAFFE LENA & LIVE FROM
GODFREY DANIELS**

Starting Wednesday at noon ET / 9am PT and running through New Year's

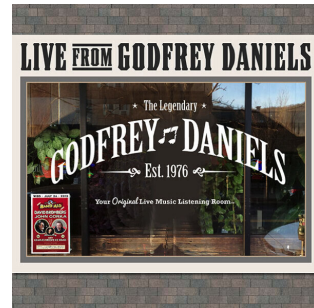
Day

Harkening back to the Golden Age of Radio when stations would celebrate New Year's Eve with live remote broadcasts of big bands from nightclubs across the country, **Folk Music Notebook** will once again celebrate the coming of the New Year with a marathon of episodes of our programs *"Live From Caffè Lena"* and *"Live From Godfrey Daniels"*.

THURSDAY JANUARY 1st

LIVE FROM GODFREY DANIELS

Thursday at 8pm ET / 5pm PT
with an encore Friday at 4am ET / 1am PT and
Sunday at 2pm ET / 11am PT



This week: Archival performances from Slaid Cleaves, Buffalo Rose, Anne Rabson, Sloan Wainwright and Us!, Del Rey, and others

Host **Dave Fry** (also the founder of *Godfrey Daniels*) shares rare archival recordings made during the 40 + year history of one of the iconic music venues in the country - [Godfrey Daniels](#) in Bethlehem, Pennsylvania!



GORD'S GOLD

Thursday at 9pm ET / 6pm PT
with an encore Friday at 5am ET / 2am PT

This week: "Gord's Gold Nuggets of 2025"

Host **Gordon Nash** shares some of his personal choices of outstanding albums of 2025. He warns that his list changes every few hours, but he vouches for every album played!

THE FOLK CLUB

*Thursday at 10pm ET / 7pm PT
with an encore Friday at 6am ET / 3am PT*

This week: "Folk Club Look Back at 2025"

Coming from the Cathedral city of Ely, Cambridgeshire, in the U.K., host **Stuart Green** takes a look back at 2025 on *The Folk Club*. Memories of his US Road Trip, The UK Festival Season and a few other wonderful tracks from this year, plus the Top 10 Countdown of the most listened to shows and the award of the inaugural *Folk Club Artist of The Year Award* ([Click here for The Folk Club archive page](#))



FRIDAY JANUARY 2nd



QUEENS OF THE BLUES

Friday at 6pm ET/ 3pm PT

Queens of the Blues with **Gina Coleman** from the band, **Misty Blues**, explores the fertile landscape of female artists who were at the foundation of early recorded blues and celebrate music created by female blues artists up to present times. The show will also gives space for Gina's friends, from varied creative backgrounds, to share the works of their most admired female blues artists and how they've influenced their artistry.

FOLKSTAGE

*Friday at 7pm ET / 4pm PT
with an encore Saturday at 1pm ET / 10am PT*

**This week: "New Year's Steve III
with SONS OF THE NEVER
WRONG"**



Sons of the Never Wrong and friends present Words We Can Dance To, Bruce Roper's musical based on Steve Goodman songs. The rom-com radio play is set in a typical Chicago corner bar.

Hosted by **Marilyn Rea Beyer**.



THE MIDNIGHT SPECIAL

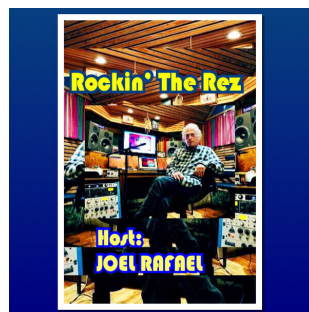
*Friday at 8pm ET / 5pm PT
with an encore Saturday at 2pmET / 11am PT*

A member of Folk Alliance International's *Folk DJ Hall of Fame*, **Marilyn Rea Beyer** hosts the nation's longest running folk show.

ROCKIN' THE REZ

*Friday at 10pm ET / 7pm PT
with an encore Saturday at 6am ET / 3am PT*

Left Coast eclectic mix of music from the personal library of host **Joel Rafael**.



SATURDAY JANUARY 3rd



WOMENFOLK

*Saturday at 11am ET / 8am PT
with an encore Monday at 5am ET / 2amPT*

A weekly radio show highlighting the best in folk/americana music from women and non-binary artists. Host: **Ellen Stanley**

WEEKEND EDITION

***Saturday at 6pm ET / 3pm PT with an encore
broadcast next Thursday at 5am ET / 2am PT***

It's the weekend woوو! Let's loosen up and check out some of the newest music from the folk, blues & Americana worlds!

[\(Click here for Joltin' Joe's archive page\)](#)



MICHAEL JOHNATHON'S WOODSONGS OLD- TIME RADIO HOUR

***Saturday at 8pm ET / 5pm PT
with an encore Sunday at noon ET / 9am PT***

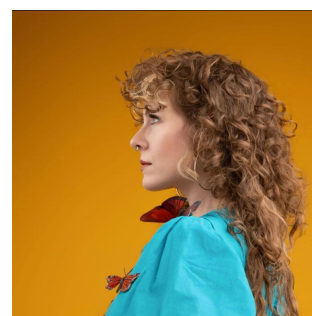
Guests: THE KRUGER BROTHERS and THE FRIEL SISTERS

A live audience celebration of grassroots music and the artists who make it. Recorded in Lexington, Kentucky and hosted by folksinger **Michael Johnathon**.

FOLKSCENE

***Saturday at 9pm ET / 6pm PT
with an encore Sunday at 5am ET / 2am PT***

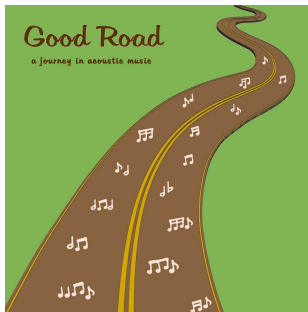
Guest: MEREDITH MOON



With clawhammer banjo, haunting vocals, and foot-stomping rhythm, Meredith Moon delivers folk music that's both rooted and rebellious. Blending old-time traditions with raw storytelling, her performances captivate intimate rooms and festival crowds alike. A singular voice in Canadian folk, she brings grit, grace, and authenticity to every stage.

Meredith Moon grew up immersed in folk music, inspired by her surroundings and the legacy of her father, legendary singer-songwriter Gordon Lightfoot. A

self-taught multi-instrumentalist and natural storyteller, she began crafting songs at a young age and spent her teens busking across Canada—from Halifax to Vancouver—developing the unique voice and style that define her work today.



GOOD ROAD

Saturday at 10pm ET / 7pm PT

Following the passing of **Dan Maher**, **Katrina Knight** has taken over as host of this popular program. Katrina was Dan's producer for Good Road, in addition to her work festival coordinator for for the

Three Rivers Folklife Society's annual Tumbleweed Music Festival, held in August in Richland, Washington. With over 40 years of experience with a variety of folk music organizations, she also listened to Dan on the radio for over 20 years, learning a thing or two about how selecting good music to play on the radio.

SUNDAY JANUARY 4th

THE MIKE HARDING FOLK SHOW

Sunday at 6am ET / 3am PT

Archival program from 2016

Broadcasting from a stone shed in the Yorkshire Dales, the iconic folk radio host **Mike Harding** will take you into the world of folk.



THE FOLK CONNECTION

Sunday at 9am ET / 6am PT

From Israel! Host **Menachem Vinegrad** has been a



radio presenter on *Radio Upper Galilee Israel* for many years. With his wife Yehudit, Menny also produces the *Jacob's Ladder International Folk Festival*, which he began 48 years ago after organizing the Jacob's Ladder Folk Club.
([Click here for Menachem Vinegrad's archive page](#))

HELEN LEICHT'S ACOUSTIC SUNDAY

***Sunday at 10am ET / 7am PT with an encore
broadcast at 9pm ET / 6pm PT***

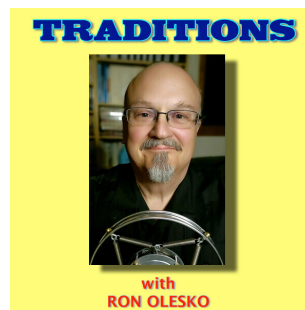
Acclaimed Philadelphia WXPB radio veteran **Helen Leicht** presents a weekly show that will highlight the more acoustic side of artists, both the legacy musicians of our time, and the new and independent artists of the next era. The show will include the best of new artists, a cause Helen has championed, and been recognized by the RIAA, since her earliest radio days.
([Click here for Helen Leicht's archive page](#))



TRADITIONS

***Sunday at 10pm ET / 7pm PT
with an encore Monday at 3pm ET / noon PT***

Host **Ron Olesko**. Simulcast with thanks to WFDU-FM, the non-commercial radio station owned by Fairleigh Dickinson University in Teaneck, NJ.
([Click here for Ron Olesko's archive page](#))



Thank you to everyone who has helped support **Folk Music Notebook** by contributing to our tip jar. If you would like to help us carry on our mission to bring you the finest in folk 24 hour a day, please visit our tip jar

at **FOLK MUSIC NOTEBOOK TIP JAR**



**Thanks for your support,
Your friends at www.FolkMusicNotebook.com**



©2025 The Folk Music Notebook | 84 North Demarest Avenue, Bergenfield, NJ 07621, US

[Web Version](#)

[Forward](#)

[Unsubscribe](#)

Powered by
[GoDaddy Email Marketing](#) ®