



THE FINEST FOLK 24/7!

***Folk Music Notebook** brings you the finest folk 24 hours a day, 7 days a week. Our diverse playlist offers classic folk songs and artists as well as contemporary singer-songwriters who carry on the traditions. In addition to the music, we also feature a number of shows featuring some of the most respected radio hosts in North America and beyond.<-*

COMING UP THIS WEEK ON FOLK MUSIC NOTEBOOK:

Check out some of these shows that are coming up this week, and be sure to visit our website at

***www.FolkMusicNotebook.com** for our complete schedule.*

(click on the date below to go directly to programs for each day)

**Click HERE to join our Folk Music Notebook
PATREON page!**

- **MONDAY
JANUARY**

- 19th
- TUESDAY
JANUARY
20th
- WEDNESDAY
JANUARY
21st
- THURSDAY
JANUARY
22nd
- FRIDAY
JANUARY
23rd
- SATURDAY
JANUARY
24th
- SUNDAY
JANUARY
25th

THE MORNING SHOW

*Monday through Friday 7am to noon ET / 4am
to 9am PT*

Host: Ron Olesko

Your daily wake up call! Tune in for folk songs to
start your day!

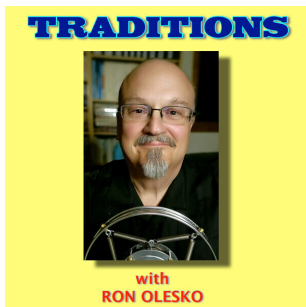


MONDAY JANUARY 19th

Martin Luther King Jr. Day

TRADITIONS

*Monday at 3pm ET / noon PT
(encore of Sunday evening's broadcast)*



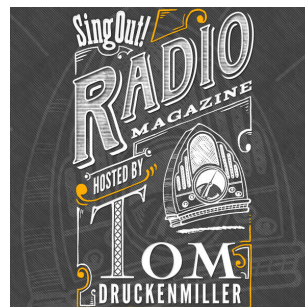
Host **Ron Olesko**

([Click here for Ron's archive page](#))

SING OUT! RADIO MAGAZINE

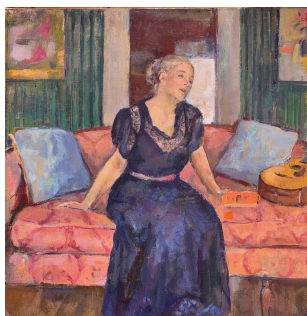
Monday at 7pm ET / 4pm PT

with an encore Tuesday at 5am ET / 2am PT



This week: "Honky Tonkin', Part 2"

Host **Tom Druckenmiller**.



MOSTLY FOLK

Monday at 8pm ET / 5pm PT

with an encore Tuesday at 6am ET / 3am PT

Guest: VALERIE SMITH

Mostly Folk is a one hour music program originating in the Catskill Mountains NY. , playing newly released albums, classic folk, indie folk and bluegrass music as well as some traditional music that may or may not be true to the genre. That's why it's called *Mostly Folk*.

Host: **Artie Martello** interviews **Valerie Smith** about her new album *Maggie's Journal*, the story of Valerie's great-grandmother, **Margaret Attebury Brooks-McCamis**. The songs are based on Maggie's own words, written in her journal, which was found in an attic trunk, decades after her death. Unveiling a life untold, the journal revealed Maggie's early years in post-Civil War rural Missouri—married too young to a violent man, Maggie hid a kind and gentle soul beneath a hardened shell.

([Click here for Artie's archive page](#))

TUESDAY JANUARY 20th

NEW AND NOTEWORTHY

***Tuesday at 1pm ET / 10am PT
with an encore at 1am ET / 10pm PT***

A sampler of the latest songs entering the Folk Music Notebook playlist.



THE MATT WATROBA SHOW

***Tuesday at 7pm ET / 4pm PT
with an encore Wednesday at 4am ET / 1am PT***

This week: "Celebrating the life and musical legacy of MLK Jr."

Host **Matt Watroba** has hosted and produced thousands of radio shows since 1986 and is a member of Folk Alliance International's *Folk DJ Hall of Fame*.

ANOTHER RADIO SHOW with James Lee Stanley

***Tuesday at 9pm ET / 6pm PT
with an encore Wednesday at 6am ET / 3am PT***



Acclaimed singer-songwriter **James Lee Stanley** hosts this weekly show offering a blend of outstanding singer-songwriters as well as a few original songs from his own song bag!

WEDNESDAY JANUARY 21st



OLD SONGS FROM THE VAULT

Wednesday at noon ET / 9am PT

Chris Koldewey hosts a monthly program that explores the magnificent collection of live recordings from 40 years of the **Old Songs Festival** in Altamont, NY.

LIVE FROM CAFFE LENA

Wednesday at 7pm ET / 4pm PT

with encores with an encore Thursday at 3am

ET / midnight PT and Sunday at 1pm ET / 11am PT



Guest: TBA

A performance recorded on the stage of **Caffè Lena** in Saratoga Springs, New York - the longest continuously operating folk music venue in the United States.



FOLK PLUS

Wednesday at 8pm ET/ 5pm PT

with an encore Thursday at 4am ET / 1am PT

Each week host Angela Page explores a theme with the music and artists that she calls Folk...plus some! A member of Folk Alliance International's *Folk DJ Hall of Fame*.

RADIO NOWHERE

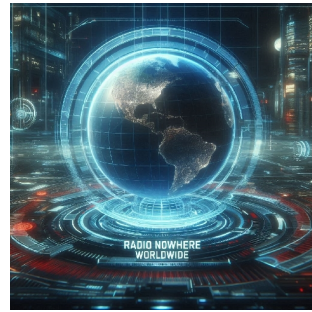
WORLDWIDE

***Wednesday at 9pm ET / 6pm PT
with encore Friday at noon ET / 9am PT***

Featuring music and songwriters from around the world including Ireland, the UK, Scandinavia, Germany, Austria and more.

Host **Joltin Joe (Pszonek)**

[\(Click here for Joltin' Joe's archive page\)](#)



THURSDAY JANUARY 22nd



RADIO NOWHERE WEEKEND EDITION

Thursday at 5am ET / 2am PT

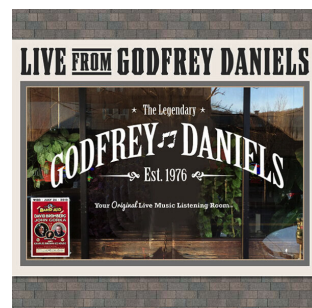
Encore broadcast of last Saturday's program.

Host **Joltin' Joe (Pszonek)** serves up more great music and songwriters from around the world including Ireland, the UK, Scandinavia, Germany, Austria and more.

[\(Click here for Joltin' Joe's archive page\)](#)

LIVE FROM GODFREY DANIELS

***Thursday at 8pm ET / 5pm PT
with an encore Friday at 4am ET / 1am PT and
Sunday at 2pm ET / 11am PT***



This week: Archival performances from Red Clay

Ramblers, Jim Lauderdale, Kieran Kane and Rayna Gellert, Scott Ainslie, The Nighthawks, Tommy Sands, Les Barker, Michael Smith and Anne Hills and Philip Boulding.

Host **Dave Fry** (also the founder of *Godfrey Daniels*) shares rare archival recordings made during the 40 + year history of one of the iconic music venues in the country - *Godfrey Daniels* in Bethlehem, Pennsylvania!



GORD'S GOLD

***Thursday at 9pm ET / 6pm PT
with an encore Friday at 5am ET / 2am PT***

This week: "Message in a Bottle"

The messages will be sent around the world, we'll hear from a Venezuelan political refugee, a Canadian Legend, and a young band from Ireland. There are four artists from the Appalachians, a couple of Angelinos, a self-described Jew from Oklahoma, and no show is complete without Brooklyn Bluegrass.

Host: **Gordon Nash**

THE FOLK CLUB

***Thursday at 10pm ET / 7pm PT
with an encore Friday at 6am ET / 3am PT***

***Guest: SAMMANTHA HANNAH of ALL
FOR JOLLY***

Coming from the Cathedral city of Ely,
Cambridgeshire, in the U.K. with host **Stuart
Green.**

([Click here for The Folk Club archive page](#))



FRIDAY JANUARY 23rd



QUEENS OF THE BLUES

Friday at 6pm ET/ 3pm PT

Queens of the Blues with **Gina Coleman** from the band, **Misty Blues**, explores the fertile landscape of female artists who were at the foundation of early recorded blues and celebrate music created by female blues artists up to present times. The show will also give space for Gina's friends, from varied creative backgrounds, to share the works of their most admired female blues artists and how they've influenced their artistry.

FOLKSTAGE

Friday at 7pm ET / 4pm PT

with an encore Saturday at 1pm ET / 10am PT



Guest: REV. ROBERT B. JONES and MATT WATROBA

FROM THE ARCHIVES! - On a wintry night in 2021, Rev. Robert B. Jones and Matt Watroba traveled from Detroit to Hinsdale, Illinois, to perform on Folkstage live from Acoustic Renaissance Concerts. Feel the warmth on this rebroadcast.

Hosted by **Marilyn Rea Beyer**.



THE MIDNIGHT SPECIAL

Friday at 8pm ET / 5pm PT

with an encore Saturday at 2pm ET / 11am PT

A member of Folk Alliance International's *Folk DJ Hall of Fame*, **Marilyn Rea Beyer** hosts the nation's longest running folk show.

ROCKIN' THE REZ

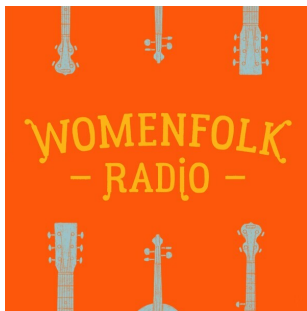
Friday at 10pm ET / 7pm PT

with an encore Saturday at 6am ET / 3am PT

Left Coast eclectic mix of music from the personal library of host **Joel Rafael**.



SATURDAY JANUARY 24th



WOMENFOLK

Saturday at 11am ET / 8am PT

with an encore Monday at 5am ET / 2am PT

Guest:

A weekly radio show highlighting the best in folk/americana music from women and non-binary artists. Host: **Ellen Stanley**

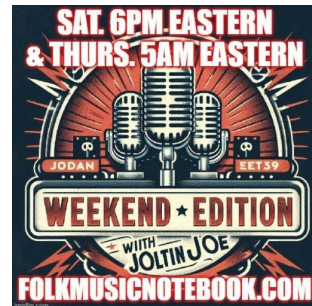
WEEKEND EDITION

Saturday at 6pm ET / 3pm PT with an encore

broadcast next Thursday at 5am ET / 2am PT

It's the weekend woooo! Let's loosen up and check out some of the newest music from the folk, blues & Americana worlds!

[\(Click here for Joltin' Joe's archive page\)](#)



MICHAEL JOHNATHON'S WOODSONGS OLD-



TIME RADIO HOUR

***Saturday at 8pm ET / 5pm PT
with an encore Sunday at noon ET /
9am PT***

Guests: SHELBY MEANS &

SARAH McQUAID

A live audience celebration of grassroots music and the artists who make it. Recorded in Lexington, Kentucky and hosted by folksinger **Michael Johnathon**.

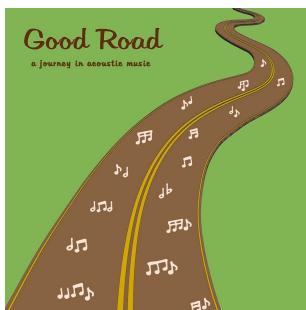
FOLKSCENE

***Saturday at 9pm ET / 6pm PT
with an encore Sunday at 5am ET / 2am PT***

Guest: TIFFANY WILLIAMS



Since 1970, *Folkscene* has been one of the most influential and respected folk radio shows in the nation. Created by the late **Howard and Roz Larman**, *Folkscene* features the highest quality music and in-studio performances and interviews from some of the most important folk and acoustic artists of the last 5 decades. Following the passing of Howard in 2007 and Roz in 2016, the show continues on with their son **Allen** and his wife **Kat Griffin** hosting and **Peter Cutler** producing.



GOOD ROAD

Saturday at 10pm ET / 7pm PT

Following the passing of **Dan Maher**, **Katrina Knight** has taken over as host of this popular program. Katrina was Dan's producer for Good Road, in addition to her work festival coordinator for for the Three Rivers Folklife Society's annual Tumbleweed Music Festival, held in August in

Richland, Washington. With over 40 years of experience with a variety of folk music organizations, she also listened to Dan on the radio for over 20 years, learning a thing or two about how selecting good music to play on the radio.

SUNDAY JANUARY 25th

THE MIKE HARDING FOLK SHOW

Sunday at 6am ET / 3am PT

Archival program from 2017

Broadcasting from a stone shed in the Yorkshire Dales, the iconic folk radio host **Mike Harding** will take you into the world of folk.



THE FOLK CONNECTION

Sunday at 9am ET / 6am PT

Guest: ANDREW LORAND

From Israel! Host **Menachem Vinegrad**'s guest is Andrew Lorand of the band "Puppets of Castro".

[\(Click here for Menachem Vinegrad's archive page\)](#)

HELEN LEICHT'S ACOUSTIC SUNDAY

***Sunday at 10am ET / 7am PT with an
encore broadcast at 9pm ET / 6pm PT***

Acclaimed Philadelphia WXPB radio veteran **Helen Leicht** presents a weekly show that will highlight the more acoustic side of artists,



both the legacy musicians of our time, and the new and independent artists of the next era. The show will include the best of new artists, a cause Helen has championed, and been recognized by the RIAA, since her earliest radio days.

[\(Click here for Helen Leicht's archive page\)](#)



FOLK MUSIC AND OTHER STUFF

***Sunday at 6pm ET / 3pm PT
with encores at Monday morning at 1am ET /
Sunday 10pm PT and Wednesday at noon ET /
9am PT***

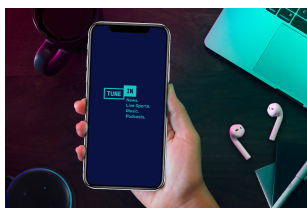
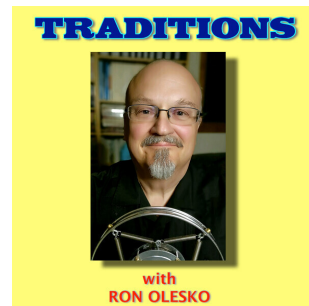
Folk music impresario **Sonny Ochs** curates a vast collection of songs that say something, tell a story, or question authority - including rarities from her brother Phil. *(Heard the 4th Sunday of every month.)*

TRADITIONS

***Sunday at 10pm ET / 7pm PT
with an encore Monday at 3pm ET / noon PT***

Host **Ron Olesko**. Simulcast with thanks to WFDU-FM, the non-commercial radio station owned by Fairleigh Dickinson University in Teaneck, NJ.

[\(Click here for Ron Olesko's archive page\)](#)



Now available on the **TuneIn** radio app in addition to our own free apps! Enjoy **FOLK MUSIC NOTEBOOK** anytime, day or night, on your favorite listening device!

Thank you to everyone who has helped support **Folk Music Notebook** by contributing to our tip jar. If you would like to help us carry on our mission to bring you the finest in folk 24 hour a day, please visit our tip jar at **FOLK MUSIC NOTEBOOK TIP JAR**



Thanks for your support,
Your friends at www.FolkMusicNotebook.com



©2026 The Folk Music Notebook | 84 North Demarest Avenue, Bergenfield, NJ 07621, US

[Web Version](#)

[Forward](#)

[Unsubscribe](#)

Powered by
[GoDaddy Email Marketing](#) ®