



**Creating Change**  
**Early Years Settings**

## What is a Scrapstore PlayPod?

The Scrapstore PlayPod is a holistic process that introduces loose parts to the playground, changing the human and physical environments, transforming play. The process involves:

- Training and Mentoring
- Consultancy and Support
- Materials and Resources
- A Purpose Built Structure

We recognise that each setting is unique. Our team of play professionals will work alongside you to enable a smooth transition to vibrant and dynamic playtimes.

A recent survey of Head Teachers reports that this programme:

- Increases creative play
- Facilitates an inclusive play environment
- Improves learning and development
- Improves self confidence in staff and children
- Helps children's risk management and problem solving
- Reduces incidents and accidents

Settings across the country are now enjoying playtimes and the benefits of the PlayPod process. We invite you to take part in this exciting development.

**Jeff Hill – CEO**



# Benefits of a Scrapstore PlayPod®

We have a body of evidence which has presented an overwhelmingly positive impact of the Scrapstore PlayPod in primary schools. We have now extended our work into Early Years and Playwork settings.

The Scrapstore PlayPod creates:

- Happier children and staff
- Large scale improvements in the level of inclusion
- Positive parent reactions
- Improvements in behaviour and a reduction of incidents and accidents
- Increased critical skills and enhanced engagement in lessons
- More confident and motivated lunchtime staff

"The Scrapstore PlayPod has changed the behaviour of children at school quite voluntarily allowing the children to exercise more choice and independence, take greater risks, problem solve and have much more fun through imaginative and creative play. This has invigorated many of the staff in their jobs, bringing new motivations and excitement about their work and its impact."

Head teacher

"By the time the pupils went back into the building for the afternoon session they were calm, happy and ready to apply themselves – I nearly said ready to learn, but in fact they had been learning all the time. The lunchtime staff could see what the children were getting out of the experiences and were able to interact much better than before and were actually enjoying their jobs far more than before too".

School Improvement Partner

"I think it offers so many different learning opportunities. It is very positive."

Parent

"Staff have been reorganised, they feel more skilled and enthused. Play times are more focussed and enjoyable, every child is doing something."

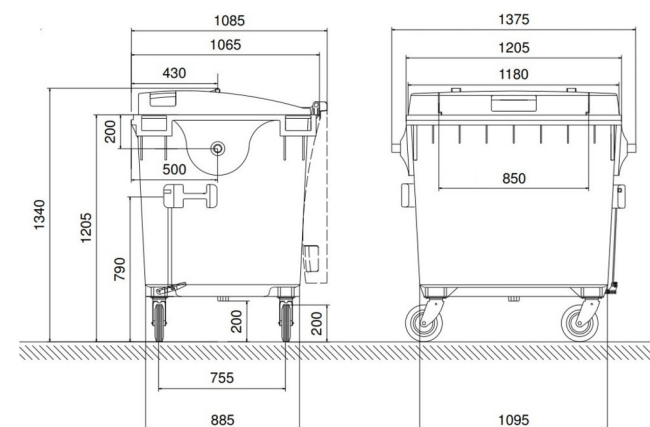
Head teacher



## Suffolk at Play Ltd HDPE PlayPod for Early Years Settings

Steel reinforced, high-density polyethylene mobile PlayPod with drop front.

- Base 137cm x 108cm, height 134cm, 1100 litre capacity
- Includes “first fill” of loose parts, ready for play by up to 30 children
- PlayPod is resistant to the effects of UV, frost, heat and chemicals
- Drop front easily secures by lifting and dropping behind the steel catches
- Fitted with four 20cm quiet running, rubber casters and two foot brakes
- Zinc-plating on all metal components resists corrosion
- Water drain in base of container prevents build-up of water (e.g. rain)
- Manual lock to prevent unwanted access
- Available in blue, brown, green, red, yellow, orange, purple and pink





# About Us

- We are a team of leading play professionals that specialise in supporting play in schools
- Through our associate membership programme we are now able to deliver Scrapstore PlayPods across most of the UK
- We are a licensed training centre endorsed by Skills Active - sector skills council for playwork



We have been using the mobile PlayPod with our pre-schoolers (2-4 years) to enhance and extend their learning. The PlayPod has been a real assest to our provision and the children really enjoy using it. The staff training was valuable, we learnt more about loose parts theory and it's great to now step back and watch the children problem solving and using their imagination.

- ABC Childcare (Ipswich) Ltd

**“This is better value than other play equipment. It is the level of involvement that is the key, every child is doing something. My lunchtime staff love it”**

Head Teacher



## Next Steps

**The Scrapstore PlayPod process is designed to be flexible in order to suit the differing needs of each setting.**

**To arrange a site visit (so we can provide a specific quote) please contact your local PlayPod representative on:**

**07421 351315**  
**[info@suffolkatplay.com](mailto:info@suffolkatplay.com)**



**Over 200 Primary  
Schools have  
already invested in  
Scrapstore Playpods**



**Suffolk at Play Ltd**  
Unit 4  
The Quadrangle Center  
The Drift, Nacton Road  
Ipswich, Suffolk  
IP3 9QR



07421 351315  
[info@suffolkatplay.com](mailto:info@suffolkatplay.com)  
[www.suffolkatplay.com](http://www.suffolkatplay.com)