



THE SILVER ANNIVERSARY

BUICK

1904-1929

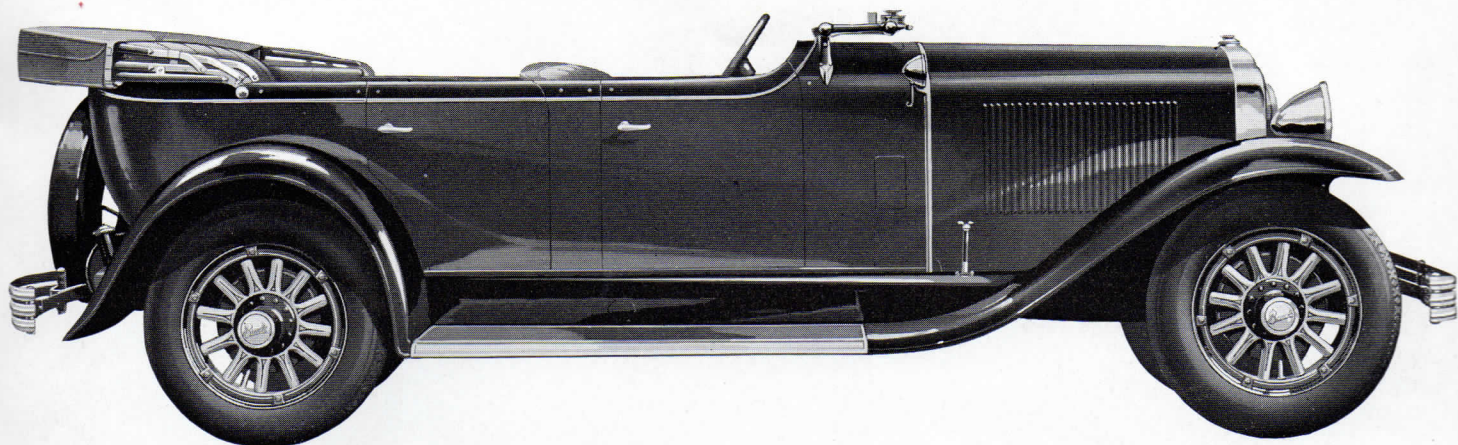
The Master Six

ON THREE WHEELBASES

The Buick MASTER SIX Touring

Seven-passenger • 129-inch wheelbase

MODEL 49



The growing popularity of open cars can readily be understood when such models as this are available. Long wheelbase and extra wide seats combine to give it luxurious roominess. Its low, sweeping lines are accentuated by the folding windshield. It sets a new vogue in open cars

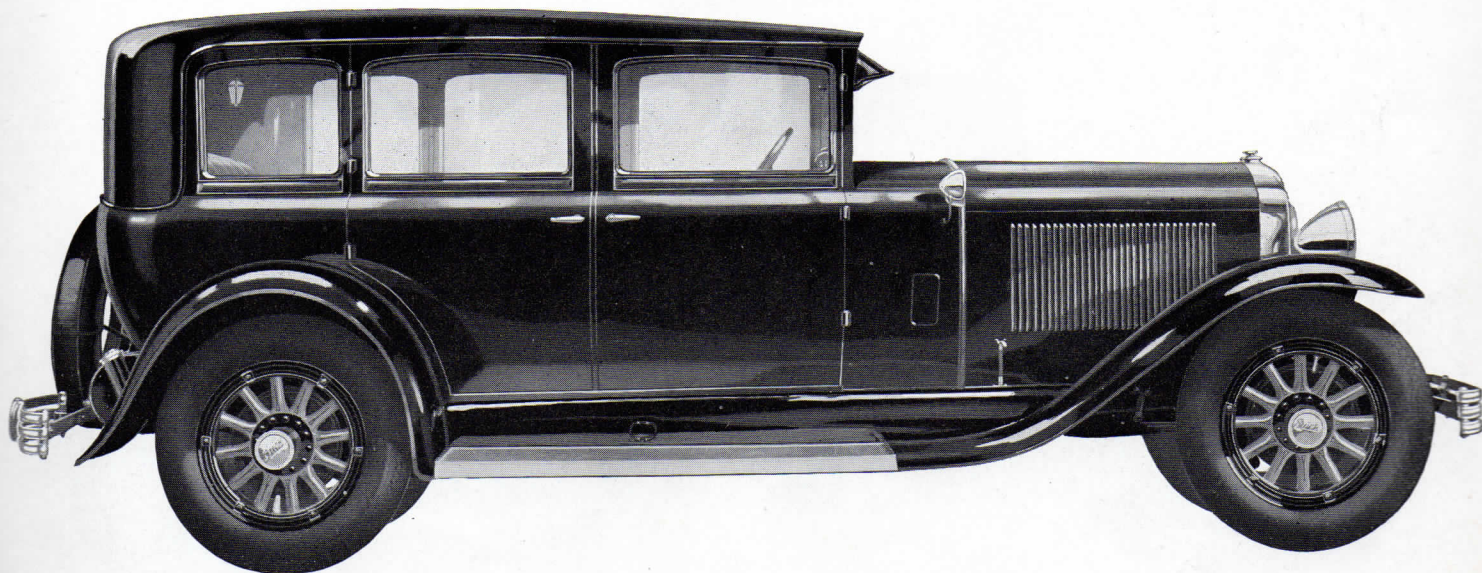
Bumpers and spare tire are extra equipment



*The Buick MASTER SIX Sedan**

Seven-passenger four-door • 129-inch wheelbase

MODEL 50



Minor details, perhaps, best indicate the charm and luxury of this Buick. For instance, rear corner lamps are automatically lighted by opening the door; there is a new vanity case; decorative panels for the doors; an all metal foot rest; and a convenient robe rail of new design

Bumpers and spare tire are extra equipment

**This model is also furnished as a Limousine (Model 50L) with a glass partition which can be raised or lowered in the back of the front seat*