

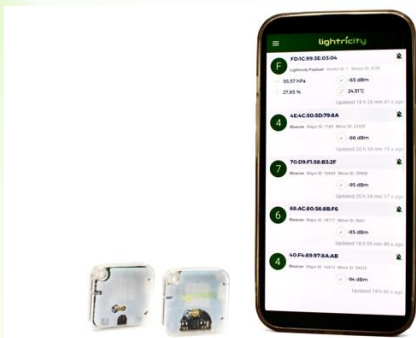
Lightricity enables sustainable IoT sensors through its patented light energy harvesting technology. We offer miniaturized, easy-to-integrate, PV-powered sensors for monitoring and tracking applications. **4EverTrack** is a completely battery-less BLE asset tracker, that can communicate to a gateway or smart phone. It is powered by the world's most efficient and smallest indoor PV cell from Lightricity.

Features

- Sustainable, ultra-low power IoT tracker powered by Lightricity world-class PV cells
- Customizable with a wide range of sensors to meet your asset monitoring needs
- Small and compact size for attachment onto any assets
- Fully sealed, operating temperatures from -40 °C to +85 °C
- I-beacon, Eddystone, or custom payload format
- Plug-and-play and compatible with BLE-based real-time location systems (RTLS)

Product Description

Option 1: 4EverTrack and Mobile App



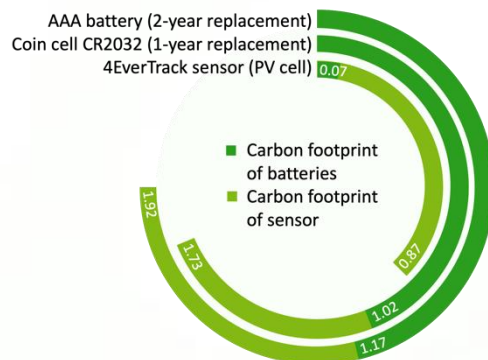
Option 2: 4EverTrack, Gateway and Dashboard



Sustainable with Low Carbon Footprint

The primary batteries conventionally used in IoT devices have a detrimental impact on the environment. This is mainly due to the manufacturing and waste management issues of toxic chemicals contained in standard batteries. 4EverTrack offers a sustainable IoT hardware solution with a carbon footprint reduction of over 50% (for the complete device), compared with battery alternatives.

A Comparison of Carbon Footprint for an IoT Device Over 25 Years



Easy-to-use and Maintenance-free

Battery-powered IoT devices require frequent maintenance over their lifetime, typically one battery change every 1-2 years. Lightricity PV material can last for decades and provides a near infinite energy source for wireless trackers and sensors. 4EverTrack works from very low (<100 lux) to bright ambient light conditions (>1000 lux), therefore you will never need to worry about changing batteries.

Sensor Specifications

Wireless communication protocol	BLE5.0
BLE communication protocol	iBeacon or proprietary
Operating temperature	-40 °C to +85 °C
Bluetooth range	100 m
Minimum operating conditions	100 lux
Transmission rate	Every 1 s at 3000 lux
(Depending on ambient light level)	Every 10 s at 500 lux
	Every 90 s at 100 lux
Enclosure dimensions	32.8 mm x 32.8 mm x 6 mm
Sensing options	Temperature, pressure, light, humidity, sound, accelerometer, magnetometer

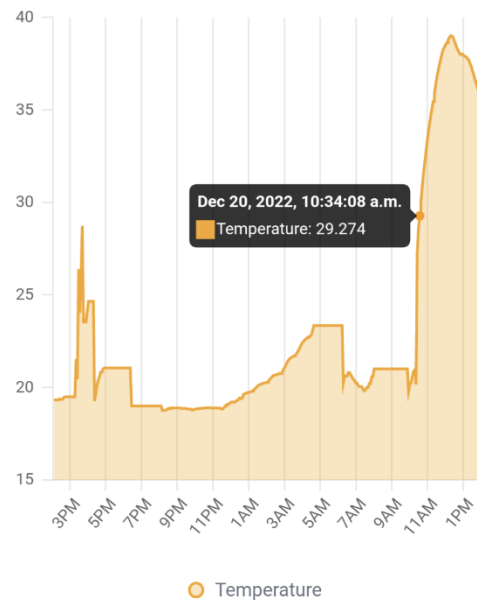
Lightricity Mobile App

The Lightricity App is available for the collection and real-time visualization of tracker and/or sensor data. The app can be run on any smart phone with Android OS and can pick up signals from any BLE devices (incl. Eddystone and iBeacon protocols). Historical data can be plotted and saved.



Lightricity Dashboard

The Lightricity dashboard is part of a cloud based IoT platform, accessible on both computers and phones. It can gather information from any IoT device, and all sensor data can be viewed and managed in one place. The platform is a great tool to demonstrate real-life IoT use cases.



Gateway Specifications

Power supply	DC 5.0V, 1A, Micro-USB
Communication	BLE & Wi-Fi / Ethernet