

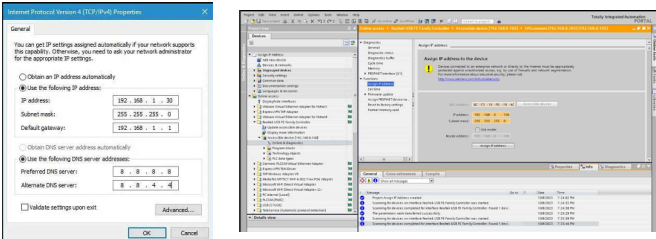
1. Ip Configuration
2. Choosing a PLC and Software:
3. Defining Inputs and Outputs:
4. Writing the Program Logic:
5. Testing and Debugging:
6. Downloading and Running:
7. Monitoring and Adjusting:

### 1 Configure IP address Manual

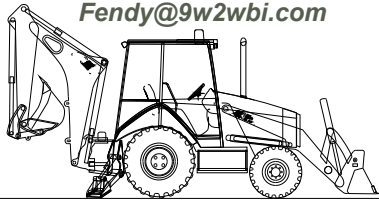
configure the IP address, subnet mask, and potentially the gateway address on your devices

Control Panel\Network and Internet\Network Connections  
Ethernet2 Properties\change setting of this connection\

The default IP address for the Siemens S7-1200 PLC is typically 192.168.0.1.



Note prepared by:  
Fendy@9w2wbi.com



### Configure IP Address Auto

Sample Batch Script  
The following sample script provides a simple menu-driven approach. Save it as ip\_changer.bat and run it as an administrator:

```

: ethernet
echo Configuring Ethernet to static IP...
netsh interface ip set address "Ethernet" static
192.168.1.100 255.255.255.0 192.168.1.1
netsh interface ip set dns "Ethernet" static 192.168.1.1
goto pause_end

: wifi
echo Configuring Wi-Fi to static IP...
netsh interface ip set address "Wi-Fi" static
192.168.2.100 255.255.255.0 192.168.2.1
netsh interface ip set dns "Wi-Fi" static 192.168.2.1
goto pause_end

: dhcp
echo Configuring Ethernet to use DHCP...
netsh interface ip set address "Ethernet" dhcp
netsh interface ip set dns "Ethernet" dhcp
echo Configuring Wi-Fi to use DHCP...
netsh interface ip set address "Wi-Fi" dhcp
netsh interface ip set dns "Wi-Fi" dhcp
goto pause_end

: pause_end
pause
goto menu

: exit
exit

@echo off
: menu
cls
echo
echo IP Changer Script for Windows
echo
echo 1. Set Static IP for Ethernet
echo 2. Set Static IP for Wi-Fi
echo 3. Set to Dynamic IP (DHCP)
echo 4. Exit
echo
set /p choice="Enter your choice (1-4): "
if "%choice%"=="1" goto ethernet
if "%choice%"=="2" goto wifi
if "%choice%"=="3" goto dhcp
if "%choice%"=="4" goto exit
echo Invalid choice. Please try again.
pause
goto menu

```

## Siemens TIA Portal local project server

```

INFO : [Portal] Performance monitoring is disabled.
INFO : [Portal] net.tcp://127.0.0.1:9037/Siemens.Automation.Portal.Server/ProjectRepository
INFO : [Portal] AddDefaultUsers method. Default Users list: EXPERTBOOK\fanaz,BUILTIN\Administrators
INFO : [Portal] AddDefaultUsers method. Fetched Users list from database: S-1-5-21-276004528-1560449861-4124384797-1801
INFO : [Portal] AddDefaultUsers method. Fetched Users list from database: S-1-5-21-276004528-1560449861-4124384797-1801,S-1-5-32-544
INFO : [Portal] Host opened, listening at:
INFO : [Portal] net.tcp://localhost:9037/ (only from this machine)
INFO : [Portal] Starting new instance of access control server.
INFO : [AccessControl] No upgrade steps available for database file [AccessControl.db], current version 13 is latest version
INFO : [AccessControl] net.pipe://127.0.0.1/Siemens.Automation.Portal.Server/ProjectRepository/1.1/fanaz/AccessControl
INFO : [AccessControl] Host opened, listening at:
INFO : [AccessControl] net.pipe://localhost/ (only from this machine)
INFO : [AccessControl] Access Control server started successfully.
Server started. Press Ctrl+C to exit.
INFO : [Portal] ClientAddress : 127.0.0.1/59782 : GetGroups Completed
INFO : [Portal] ClientAddress : 127.0.0.1/59782 : CreateProject Completed
INFO : [Portal] ClientAddress : 127.0.0.1/59785 : Starting project service for client using contract version 60
INFO : [Portal] Project server [Project3] is starting.
INFO : [Project : Project3] Performance monitoring is enabled for project server [Project3].
INFO : [Project : Project3] Reading lock journal, building lock cache.
INFO : [Project : Project3] Finished reading lock journal. Lock cache is up to date.
INFO : [Project : Project3] net.tcp://127.0.0.1:9038/Siemens.Automation.Portal.Server/ProjectRepository/Project3
INFO : [Project : Project3] Host opened, listening at:
INFO : [Project : Project3] net.tcp://localhost:9038/ (only from this machine)
INFO : [Project : Project3] Project server [Project3] started successfully.
INFO : [Portal] Project server start acknowledgment received for project : Project3
INFO : [Project : Project3] EXPERTBOOK\fanaz: Started upload for workspace 0 using compression strategy 'NoCompression' and delta version '2'.
INFO : [Project : Project3] Uploading: Transfer finished, 462.41 KB in 00:00:00.3379867, 1.34 MB/s.
INFO : [Project : Project3] EXPERTBOOK\fanaz: Finished upload for workspace 0 with change data. Created revision 1.
INFO : [Portal] ClientAddress : 127.0.0.1/59782 : GetGroups Completed
INFO : [Portal] ClientAddress : 127.0.0.1/59887 : Starting project service for client using contract version 60
INFO : [Portal] Project server [6e59d7a7-ac93-49a3-a464-9b34811abb2] is already running.
INFO : [Project : Project3] EXPERTBOOK\fanaz: Created workspace 1 for computer EXPERTBOOK.
INFO : [Project : Project3] EXPERTBOOK\fanaz: Started download of revision 1 for workspace 1 using compression strategy 'NoCompression' and delta version '2'.
INFO : [Project : Project3] Downloading: Transfer finished, 0.00 KB in 00:00:00.1158024, 0.00 KB/s.
INFO : [Project : Project3] EXPERTBOOK\fanaz: Finished download for workspace 1. Got revision 1.
INFO : [Portal] ClientAddress : 127.0.0.1/59782 : GetGroups Completed
INFO : [Portal] ClientAddress : 127.0.0.1/59782 : GetGroups Completed

```

### Siemens TIA Portal local project server

To manage the Siemens TIA Portal local project server from the command line, you'll use the prjsrv command (for the project server) and the pspt command (for the Power Tools). These tools, along with the musrv command for the multiuser server, allow you to start, stop, configure, and manage server projects and libraries.

Key Commands and Their Functions:

**prjsrv:**

Used for managing the project server itself.

You can use it to start, stop, or configure the project server.

**pspt:**

Used to manage server projects, libraries, and local sessions on the project server through the Power Tools.

**musrv:**

Used for managing the multiuser server, including installation, configuration, and certificate management.

### Example Usage:

starting the project server: prjsrv start.

Stopping the project server: prjsrv stop.

Installing the multiuser server: musrv

install -r <repository\_path> -p <port\_number>

-b https -h <certificate\_hash> (requires administrator rights).

Managing server projects using Power Tools: pspt (followed by specific commands for actions like creating, opening, or deleting projects).

Important Considerations:

Administrative Rights:

Some commands, especially those related to installation and configuration of the multiuser server, require administrator privileges.

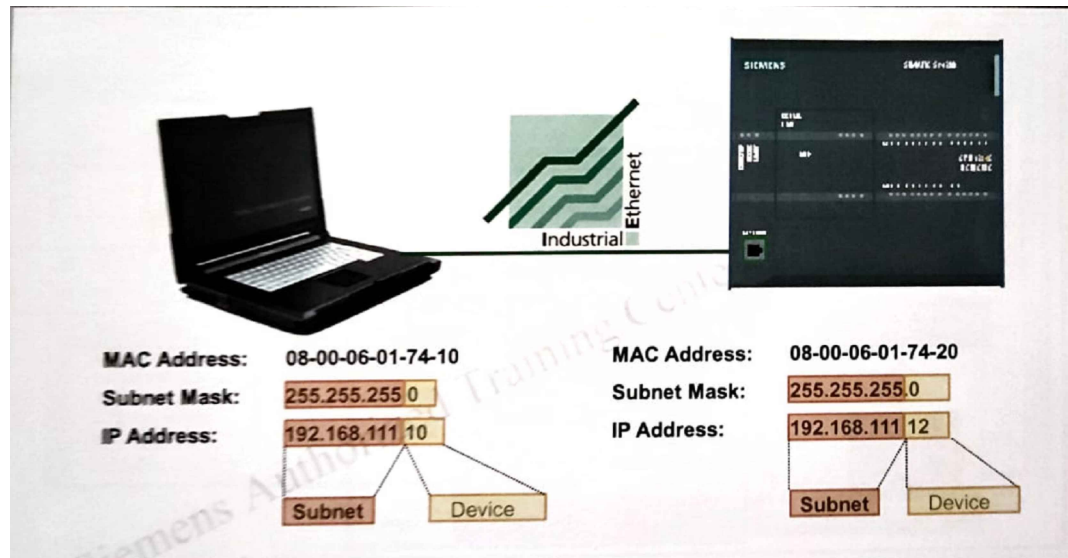
TIA Portal Installation:

The local project server is typically installed by default with TIA Portal.

Power Tools:

The Project Server Power Tools are used for more advanced management tasks and are accessed via the pspt command.

### 4.2. Online connection via industrial Ethernet : assigning an IP Address for the PG



IP address PG/PC --> PLC Subnet

In the last session, the lecturer taught 2 ways to change the PC and PLC subnet.

### Conclusion :

CPU reset factory setting as Topic 4.5.1 will change subnet to default therefore changing PC/PG subnet refer to subject 4.2.1 are recommended steps compare to changing PLC subnet

### 4.5.1 SIMATIC S7-1200/1500:

#### Memory Concept for CPU Reset to Factory Setting

#### Requirement :

6ES7954-8LC02-0AA0

(EAN: 4047623402350)

SIMATIC S7 Memory Card, 4 MB

Price Rm 219.88 US\$52

empowerlaptop.com

Price Rm 131.92 Refurbished

JC-Electronic



Figure similar

Memory			
Type of memory	Flash-EPROM		
Memory size	4 Mbyte		
Number of write/delete operations, min.	500 000		
Data retention (after final programming action), min.	10 a; if the delete/write processes < 50 000 (1 a if the delete/write processes > 450 000)		
Dimensions			
Width	24 mm		
Height	32 mm		
Depth	2.1 mm		
Weights			
Weight, approx.	3 g		
Classifications			
		Version	Classification
	eClass	14	27-24-22-12
	eClass	12	27-24-22-12
	eClass	9,1	27-24-22-12
	eClass	9	27-24-22-12
	eClass	8	27-24-22-12
	eClass	7,1	27-24-22-12
	eClass	6	27-24-22-12
	ETIM	9	EC000192
	ETIM	8	EC000192
	ETIM	7	EC000192
	IDEA	4	8458
	UNSPSC	15	43-20-14-02
Approvals / Certificates			
General Product Approval		For use in hazardous locations	
		Maritime application	

Note prepared by:  
Fendy@9w2wbi.com

