

Transmittance **$U_w \geq 0.76$ (W/m²K)**

Consult typology, dimensions and glass.

Acoustic insulation

Maximum glazing	63 mm
Minimum glazing	6 mm
Maximum acoustic insulation	Rw = 44 dB

Sightlines

Frame	70 mm
Sash	78 mm

Profile Thickness

Window	1.5 mm
Door	1.7 mm

Polyamide strip length 32 / 35 mm**Maximum dimensions / Sash**

Width (L) = 1,500 mm

Height (H) = 2,600 mm

Consult maximum weight and dimensions according to typologies.

Maximum weight / Sash 160 kg**Certificates**

ATG Certification - 3204



DTA certification from CSTB lab.



SKG Certification

**Categories achieved at test centre**

Protection against atmospheric agents.

Air permeability**(UNE-EN 12207):** Class 4**Water tightness****(UNE-EN 12208):** Class E1800**Wind resistance****(UNE-EN 12210):** Class C5

* Reference test 1.23 x 1.48 m / 2 sashes.

Classification according to North American Standard**(AAMA A440):** Class AW-PG60 1502 x 2502 (59 x 99)-FW

* Fixed light reference test 1.50 x 2.50 m.

Burglar resistance**(UNE-EN 1627):** Grade RC2 (WK2)

* Reference test 2.52 x 1.47 m, 1 sash with EVO SECURITY hardware.

Security test: PAS24 ☒

Passed

* Fixed light reference test 1.100 x 2.400 m / 1 sash.

Test verified by

ALUMINIOS CORTIZO S.A.U.**Extrusion alloy** 6063 T-5**Finishes**

Possibility of dual colour

Colour powder coating (RAL, mottled & rough)

According to Qualicoat >60 microns

Wood effect powder coating

According to Qualideco standard

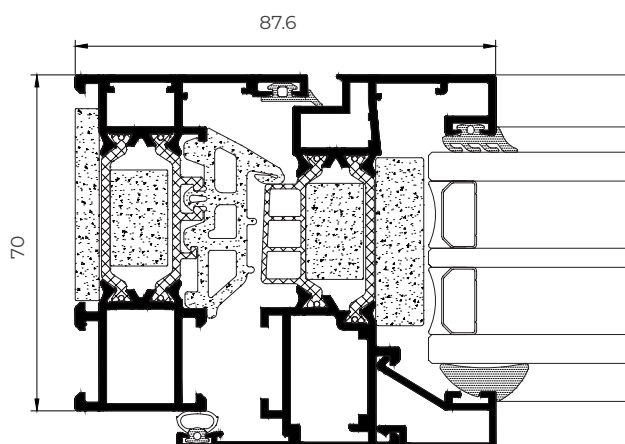
Anodised

According to Ewma Euras / Standard Class 15 / Optionally Class 20 and 25

Opening possibilities

Inward opening: side hung, tilt & turn, parallel sliding and bottom hung.

Outward opening: side hung, top hung and hidden pivoting on horizontal and vertical axis.



COR 70 INDUSTRIAL TB

HALF-HIDDEN SASH

Transmittance

$U_w \geq 0.86$ (W/m²K)

Consult typology, dimensions and glass.

Acoustic insulation

Maximum glazing	40 mm
Minimum glazing	26 mm
Maximum acoustic insulation	Rw = 44 dB

Sightlines

Frame	70 mm
Sash	78 mm

Profile Thickness

Window	1.9 mm
--------	--------

Polyamide strip length 35 mm

Maximum dimensions / Sash

Standard solution

Width (L)	1,300 mm
Height (H)	2,400 mm

HD Hinges (side hung)

Width (L)	1,200 mm
Height (H)	3,000 mm

Consult maximum weight and dimensions according to typologies.

Maximum weight / Sash 160 kg

Certificates

ATG Certification - 3204



DTA certification from CSTB lab.



SKG Certification



Categories achieved at test centre

Protection against atmospheric agents.

Air permeability

(UNE-EN 12207): Class 4

Water tightness

(UNE-EN 12208): Class E1650

Wind resistance

(UNE-EN 12210): Class C5

* Reference test 1.23 x 1.48 m / 1 sash.

Security test: PAS24 ☒

Passed

* Fixed light reference test 1.100 x 2.400 m / 1 sash.

Test verified by

ALUMINIOS CORTIZO S.A.U.

Extrusion alloy

6063 T-5

Finishes

Possibility of dual colour

Colour powder coating (RAL, mottled & rough)

According to Qualicoat >60 microns

Wood effect powder coating

According to Qualideco standard

Anodised

According to Ewva Euras / Standard Class 15 / Optionally Class 20 and 25

Opening possibilities

Inward opening: 1 & 2 sash side hung, 1 & 2 sash tilt & turn, parallel sliding and bottom hung.

