



Supported by



Organized by



RUNGTA STEEL®
TMT BAR & WIRE ROD

presents...

National Conference on **Steel in** **Infrastructure**

16 March
2024

The Ashok
Chanakyapuri, New Delhi

Powered by



Co-Powered by



400+ Delegates | 15 Stalls

8hrs Learning Sessions | **High-Level Networking**



mymetalogic.com | metallogicpms.com



OUR PARTNERS



Title Sponsor:



Powered by:



Co-Powered by:



Delegate Bag by:



Silver Sponsor:



Lanyard Sponsor:



Co Sponsors:



Associate Partners:



Exhibitors:



Knowledge Partners:



Support Associations:





In our rapidly evolving national infrastructure landscape, there is a growing demand for sturdy, sustainable, and visually appealing structures. Steel, renowned for its exceptional properties, emerges as a pivotal player in meeting these requirements. Domestic steel mills play a crucial role in supplying high-quality steel to meet the evolving needs of the country.

As the nation witnesses a surge in infrastructure projects, including the establishment of new airports, railway stations, bus stops, and public transit systems, existing facilities are undergoing comprehensive transformations. Concurrently, government initiatives such as Housing for All, Shouchalya Yojna, and Pradhanmantri Awas Yojna are expected to further stimulate steel demand and elevate domestic per capita consumption.

The challenge posed by steel-producing residue, specifically slag, in terms of storage has found an innovative solution in road construction activities, contributing to the concept of 'Waste to Wealth.'

Amidst the escalating demand for steel, a notable observation is the lack of awareness regarding the selection of the right steel grade. Additionally, a distinction between steel produced by tier-I and tier-II steel mills is emerging within the sector. However, it's crucial to note that all steel, regardless of its production route, adheres to BIS norms.

While the domestic steel market continues to experience robust demand, there are still areas where government intervention could further nurture industry growth. Streamlining business processes through single clearance windows for projects and addressing pending projects that are occupying valuable land are potential areas for government support in fostering industry development.





ABOUT THE ORGANIZER



Metalogic PMS, headquartered in India, serves as a market intelligence firm specializing in the Indian Steel and Mining Industry. Established in 2015 by Monica Bachchan, a first-generation entrepreneur, Metalogic aims to elevate the presence of women within the steel and mining sector. Currently, the industry exhibits a scarcity of female staff, with less than 1% reaching managerial positions.

As a prominent mass media organization, Metalogic orchestrates events for the steel, mining, and logistics sectors. The company provides daily news coverage spanning steel, mining (iron ore and coal), logistics, steel prices, and both Indian and global news. Actively engaged on social media, Metalogic boasts a YouTube channel with over 3500 subscribers from the industry, featuring a collection of steel and mining-related videos.

In addition to its media initiatives, Metalogic contributes to the educational sector by affording engineering colleges and universities opportunities for students and faculty to attend steel events at no cost. The firm also champions the involvement of female students in metallurgy courses, fostering career pathways.

Furthermore, Metalogic actively supports research and development endeavors within the steel and mining industry. This involvement aims to enhance product quality, boost energy efficiency, and contribute to effective waste management practices.

METALOGIC PMS
has launched a portal

MYMETALOGIC.COM

which is designed to provide timely,
accurate and reliable information and
data for the steel, metal, mining, and
logistics industry.



Webinars
& Conferences



News & Media



Studio



Market Research



Advertising

WHY METALOGIC EVENT



Industry Specialised
Speaker Selection



Time Management
With Quality Content



Excellent Promotion
of Steel to End-User Industries



Targeted Customer
Attendees



Buyers &
Sellers Meet



Policy Discussions
& Recommendations



Brainstorming
Sessions

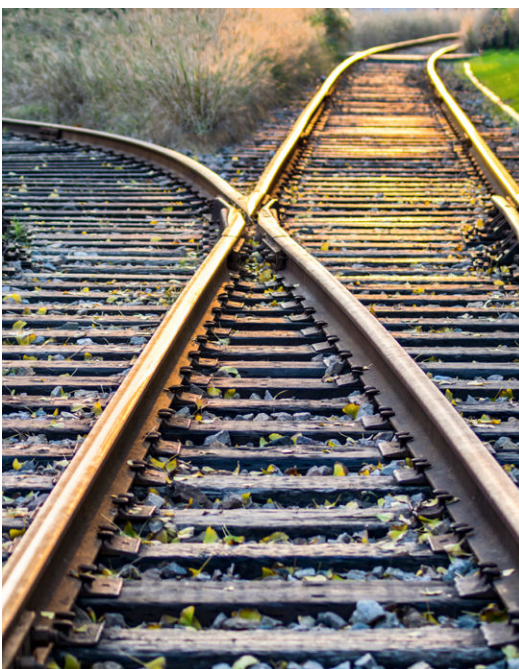


WHO SHOULD ATTEND



- * TMT Manufactuerers
- * Structural Steel Manufacturers
- * Steel Service Centers
- * HRC & CRC Manufactuerers
- * Roof Makers
- * Pipe Makers
- * Infrastructure Developers
- * Builders
- * Engineering Products Makers
- * Steel Fabricators
- * Rolling Machines Makers
- * Automobile
- * Forging
- * Testing Agencies

- * Traders
- * Investors
- * Railway Component & Equipment Suppliers
- * Transporters
- * Processing Units
- * Technology Providers
- * Information Technology
- * Market Analysts
- * Academia
- * Research & Development Groups
- * Economists
- * Technocrats





09:00 - 10:00	Delegate Registration
30 Mins	Speed Networking Session & Welcome Refreshments
10:00 - 10:15	Exhibitor Stall Visits by the VIPS
10:15 - 11:30	Conference Inaugural Session - Welcome Address
75 Mins Extempore	<p>Discussion Points:</p> <ul style="list-style-type: none">• Indian policies supporting the steel intensive infrastructure development• Steel industry preparations to support growing infrastructure needs• Ease of doing business for companies by easy licensing, chain of approvals and single window clearance• Project Financing, Crowd Funding and Need for FDI
11:30 - 11:45	Networking Tea Break
11:45 - 12:00	Demonstration Presentation 1
12:00 - 13:00	Session 1
60 Mins Presentations	<p>Building Safe & Sustainable Roads, Highways & Ports</p> <ul style="list-style-type: none">• Steel slag for Roads and Highways – Case studies and success rate• Prioritizing Safety – Steel as crash barriers and road dividers• Participation of primary and secondary route steel producers in projects• Upcoming projects of Boarder Roads, Freight corridors, Ports and Highways• Traffic & Bulk Transits expected in the next 5 years on Roads, Highways & Ports• Opportunities for dependent business like petrol pumps, tolls, hospitals, restaurants & malls around the roads and highways
13:00 - 14:00	Lunch & Networking Break
14:00 - 14:15	Demonstration Presentation 2



14:15 - 15:15

60 Mins
Panel - Discussion

Session 2

Advance structures for Smart Buildings – Residential and Commercial Projects for Smart Cities

Discussion Points:

- Accessing the steel participation in Government schemes like Housing for All, Shoucha-lyo Yojna, Pradhanmantri Awas Yojna, etc.
- 500 or 500D TMT quality parameters for the usage in building basic to advance structures
- Incentivising Green Building projects as India is emerging as the second largest in the world covering about 10 billion sq. ft.

15:15 - 15:30

Presentation on Modern Architecture of Airports

15:30 - 16:30

60 Mins
Presentations

Session 3

Public Infrastructure for Mass Transits – Airports, Railway Stations, Bus Stands and High Speed Metros

Discussion Points:

- Upcoming mass transit projects and various participation models like PPP
- Improving rail services by focusing on high-speed rails and sustainable steel intensive interiors and sanitation
- Integrated Bus Stands Projects to bridge gaps between rural and urban transits
- Steel pipe intensive new Airports and Railways projects. Re-modernizing old airports and railway stations

16:30 - 16:45

Session 4 – Project Financing

16:45 - 17:30

Session 5 – Project Licensing NCLT and Resolutions

17:30 - 17:45

Demonstration Presentation 4

17:45 - 18:00

Networking High Tea & Photo Sessions

Day Ends





CONFERENCE PARTICIPATION



Sponsorship Tariffs

15

LAKH*

Title Sponsor

10

LAKH*

Powered By

8

LAKH*

Co-Powered By

7.5

LAKH

Lunch Sponsor

7.5

LAKH

Dinner Sponsor

6

LAKH

Gold Sponsor

5

LAKH

Delegate Kit Sponsor

5

LAKH*

Badge Sponsor

5

LAKH*

Lanyard Sponsor

4

LAKH

Silver Sponsor

2.5

LAKH

Bronze Sponsor

1.5

LAKH

Co-Sponsor

Please note: 18% GST applicable on base tariffs. Star (*) Category tariff is non-negotiable

Delegate Fee

INR

7500

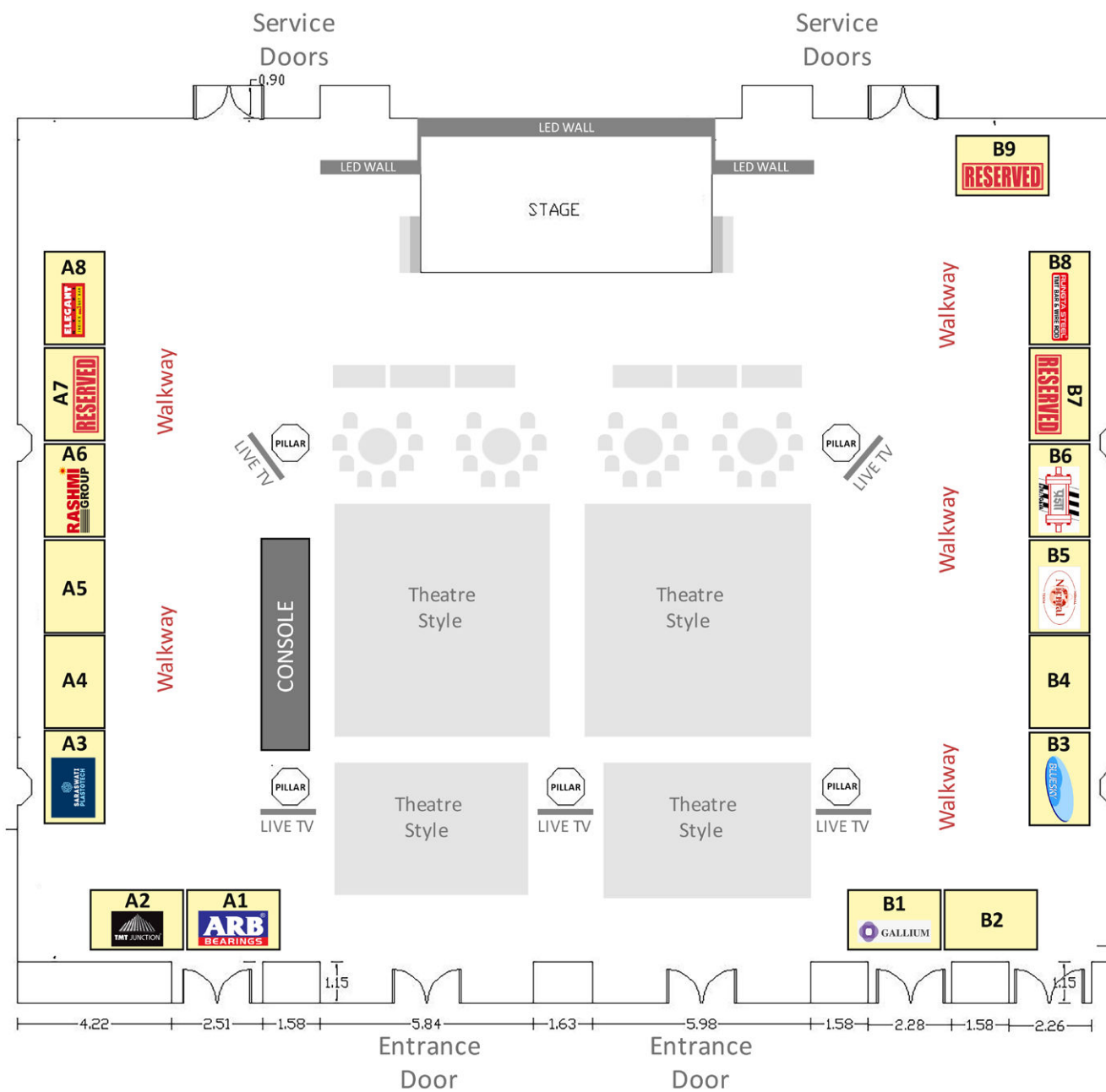
+ 18% GST

You can make the payment by
NEFT/ RTGS or Payment Gateway.





CONFERENCE HALL LAYOUT



Stall Tariff

INR
80,000 + 18% GST

 2x3 Sq Mtr
Octonorm Stall





ABOUT THE CITY DELHI



Delhi is a beautiful city and it is the capital of India. It is an old city because it has many buildings that were built during the ancient time. Delhi has two parts one is old Delhi which is built during the Mughal period and New Delhi which has many beautiful parks and big new buildings. It has India Gate, Qutab Minar, Jama Masjid, and Parliament house. Many tourists across the world come to visit these places. Prime Minister hoists the national flag on the Red Fort on Independence Day and republic day.

Delhi is also the “Heart of India.”

ABOUT THE VENUE THE ASHOK HOTEL



Located in the capital city of India, The Ashok offers a host of facilities such as an outdoor swimming pool, spa and wellness centre and a fitness centre.

The hotel is 2 km from Rashtrapati Bhavan and 5 km from India Gate. The New Delhi Railway Station is 9 km away while the Delhi International Airport is 15 km away.



OUR PAST EVENTS





DELEGATE REGISTRATION



No. of Delegate	Tariff in INR
1.	7,500
2.	15,000
3.	22,500
4.	30,000

**Please Note: GST additional on the above tariffs.*

INR
7500 + 18% GST

You can make the payment by
NEFT/ RTGS or Payment Gateway.

Bank Details For Delegate Registration (RTGS/NEFT,Cheque or DD)	
Account Transfer	ICICI Bank
Account Type	Current
RTGS/NEFT IFS Code	ICIC0000815
Account Name	Metalogic Projects Management Services Pvt. Ltd.
Account Number	081505001100
Bank Address	Branch A-3/13, Sector 110, Noida, Uttar Pradesh - 210301

GENERAL TERMS & CONDITIONS

- 18% GST APPLICABLE ON THE ABOVE TARIFF.
- THE DELEGATE FEE IS NON-NEGOTIABLE.
- THE DELEGATE FEE IS NON-REFUNDABLE. THE NAME OF THE DELEGATE CAN BE REPLACED BY THE ALTERNATE DELEGATE ASSIGNED BY THE COMPANY.
- THE PAYMENT TO BE MADE 100% ADVANCE THROUGH THE PAYMENT GATEWAY/NEFT/CHEQUE/IMPS/RTGS OR PAYTM/GOOGLE PAY.

CONTACT

SPONSORSHIP & WHITE PAPERS

Monica : 98187 50128

EXHIBITOR STALL BOOKINGS DELEGATE REGISTRATION

Yasmeen : 97170 97893
Rahul : 70650 44004
Hardik : 85878 72832

CREATIVES & STALL COORDINATION

Amarjeet : 87094 88679
Shiv : 94557 26722

PARTNERSHIPS

Mannu : 75839 81120
Shivangi : 9634480172

HOTEL & LOGISTICS COORDINATION

Rajat : 98739 03590



EMAIL

monica@metalogicpms.com | yasmeen@metalogicpms.com | mannu@metalogicpms.com
rajat@metalogicpms.com | rahul@metalogicpms.com | hardik@metalogicpms.com
amarjeet@metalogicpms.com | shiv@metalogicpms.com | shivangi@metalogicpms.com