



**Dedicated Freight Corridor Corporation of India Limited  
(DFCCIL)**

# **Dedicated Freight Corridors A Game Changer in Freight Transportation**

**16th March 2024 | New Delhi**

# DFC : An Engineering Marvel



# DFCs passes through 9 States and 72 Districts

## Western Corridor (1506 Km)

Dadri-Rewari	127 km
Rewari-Makarpura	949 Km
Makarpura-JNPT	430 Km

## Statewise Route length

UP	19 km
Haryana	177 km
Rajasthan	567 km
Gujarat	565 km
Maharashtra	178 km

## Eastern Corridor (1337+538 Km)

Ludhiana – Khurja	401 Km
Khurja-Dadri	46 km
Khurja – Bhaupur	351 Km
Bhaupur – DDU	402 km
DDU-Chirailpathu	137 km
Sonnagar – Dankuni	538 km

## Statewise Route length

Punjab	88 km
Haryana	72 km
UP	1078 km
Bihar	239 km
Jharkhand	195 km
West Bengal	203 km

**Project Length : 2843 km**  
**Completed : 2557 km**  
**Work in progress : 286 km**  
**Sonnagar-Dankuni : 538 km**  
**Total : 3381 km**

## Legend

- Existing Line
- Western DFC Line
- Eastern DFC Line
- To be executed by IR



**Involved Land Acquisition of more than 11000 Ha**



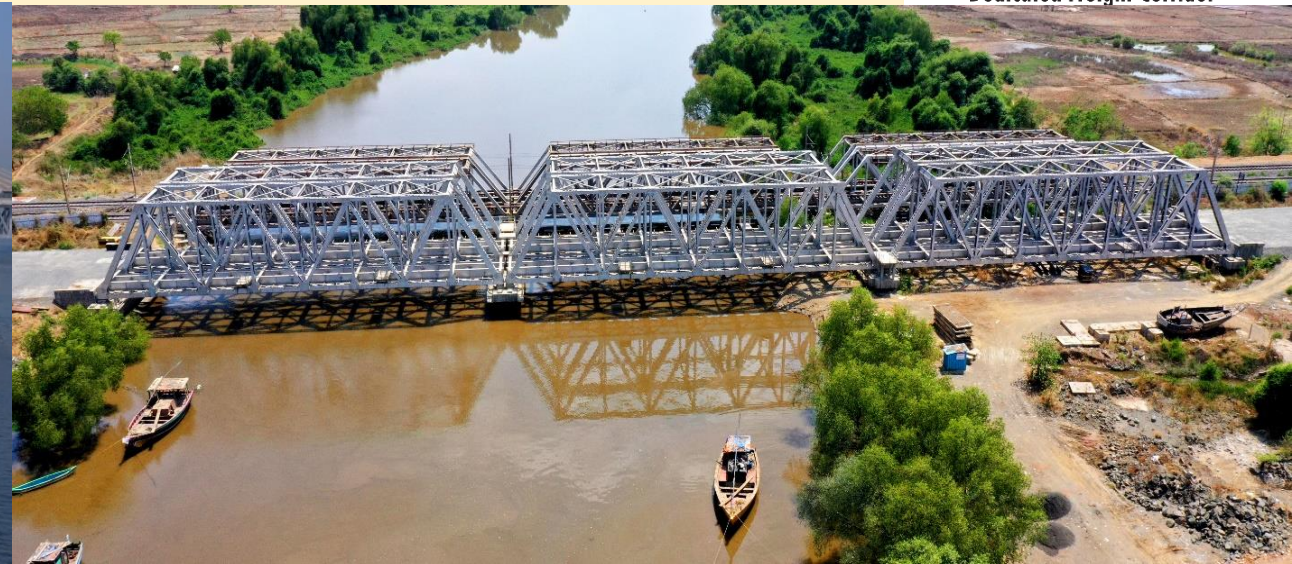


**Earthwork of more than 2500 lakh cum**





# Important Bridges - 62 nos





# Major Bridges : 535 nos





# Minor Bridges : 4643 nos



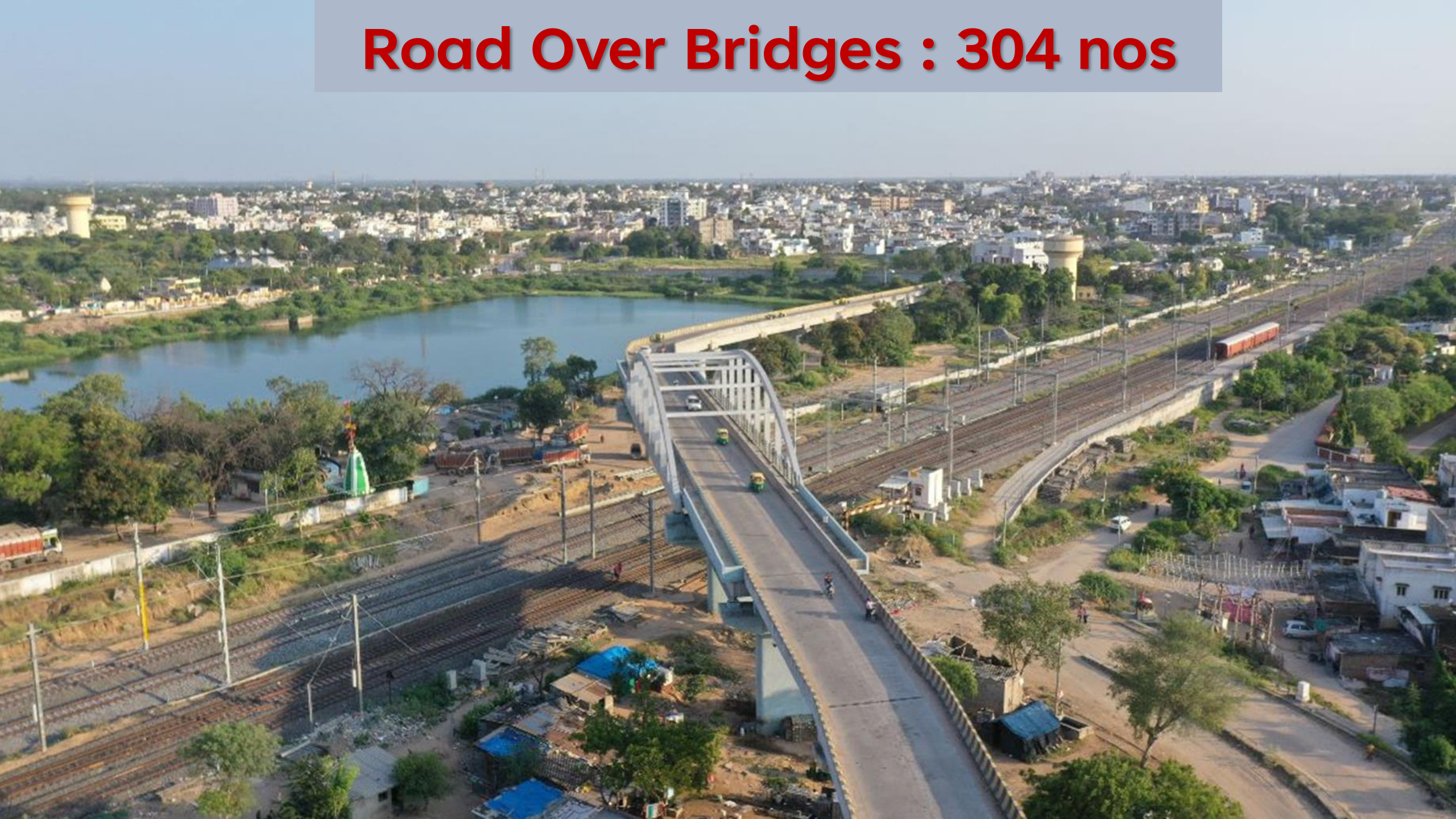


# Rail over Rail Flyovers – 53 nos





# Road Over Bridges : 304 nos





**Road Under Bridges : 557 nos**





# Junction Stations : 48 nos

WDFC: 24 nos

EDFC: 24 nos





# Crossing Stations : 69 nos

WDFC: 25 nos

EDFC: 42 nos





# National Highway Crossings: 77 nos

WDFC: 38 nos

EDFC: 39 nos





# State of the Art - Western DFC Operation Control Center





# State of the Art - Eastern DFC Operation Control Center

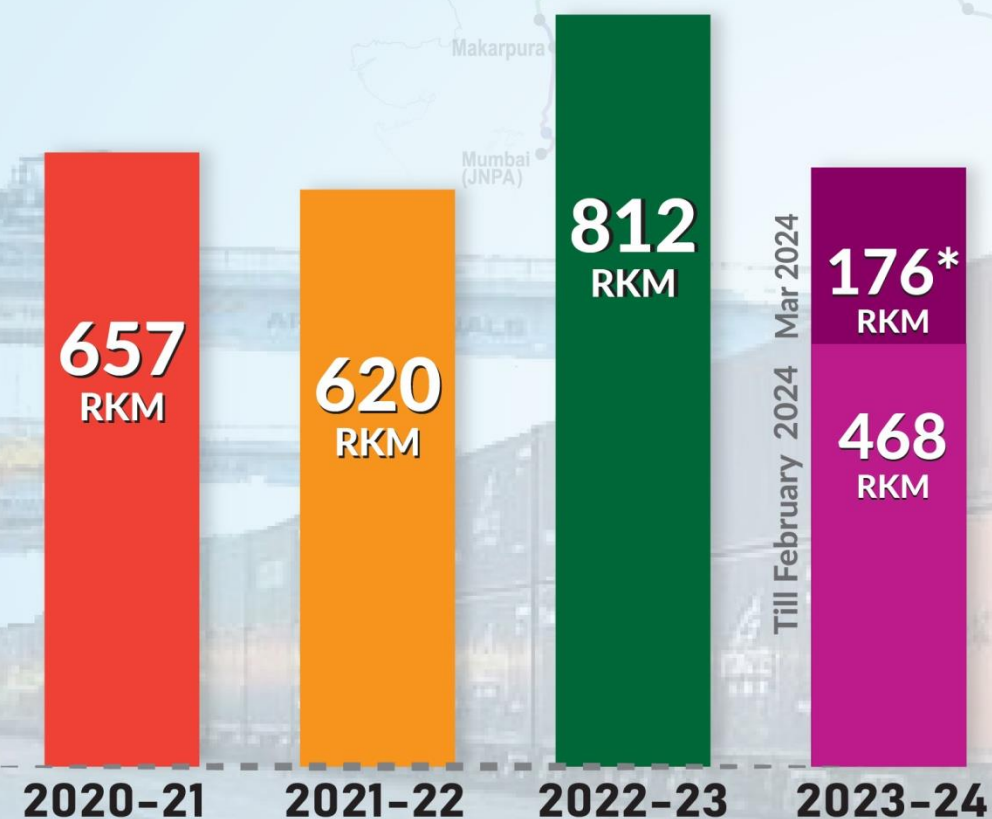




# Project Status



As in February 2024,  
**2557 Rkm**  
has been commissioned



\*Targeted for FY 2023-24

**90%**  
**DFC Commissioned**  
BG Double Line, 2x25 KV Electrified



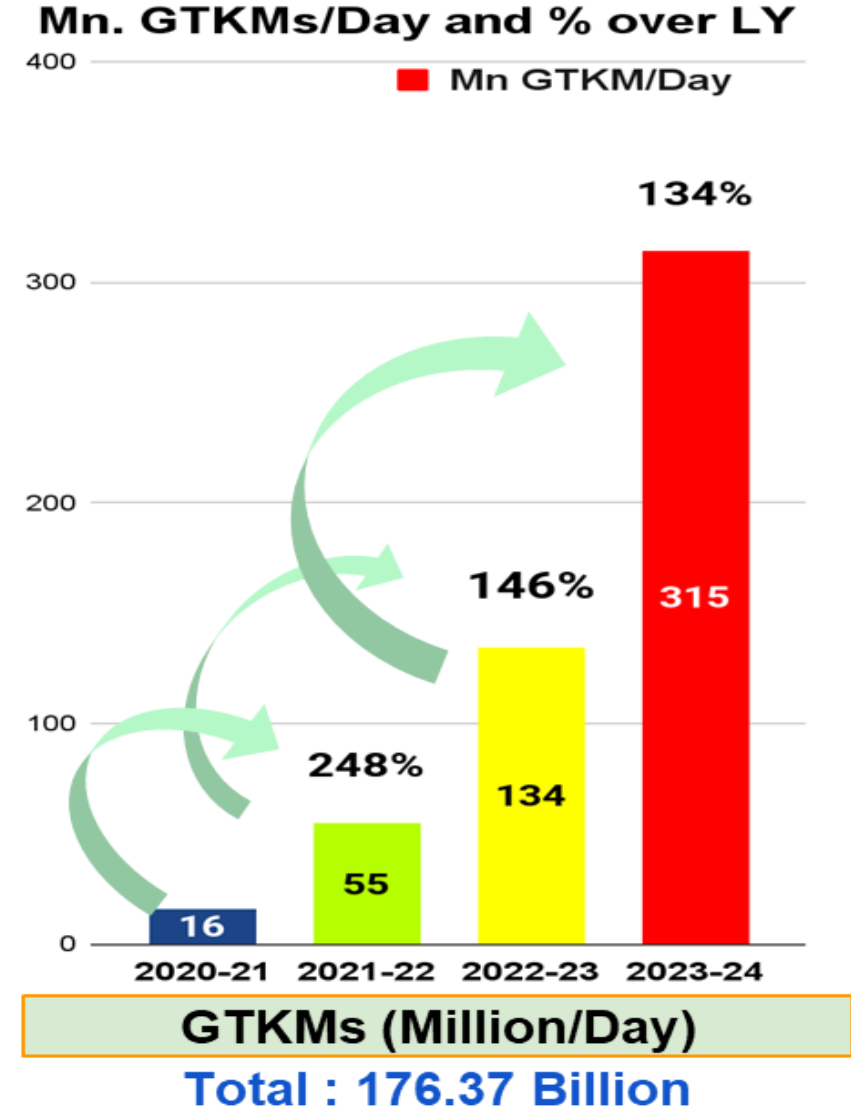
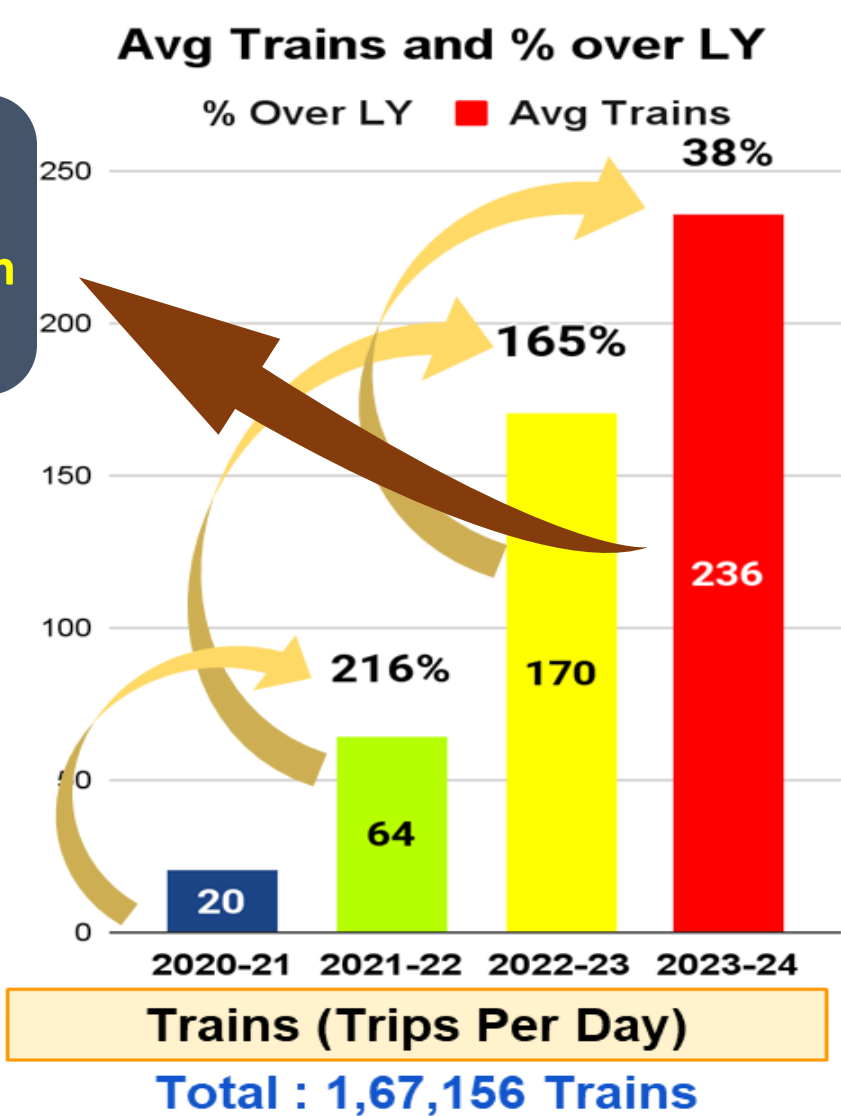


By March 2024  
**96%** will be commissioned  
except Vaitarna-JNPT section(109 km)





**300**  
daily trains run  
in Mar'24



**Heavier, Higher, Longer and Faster**



# Steel utilized in making of DFCs



# 1. Steel as Rails for DFC Tracks



**DFC Total Track length: 6015 TKm**

**Rails used: 60 kg/m**

**Total Rails Steel Used: 7.22 Lakh Tons**



## 2. Structural Steel for DFC Bridges & FOBs



**More than 5000 Major/Minor Bridges, 53 RFOs, 304 ROB**  
**Total Steel used : 1.54 Lakh Tons +**



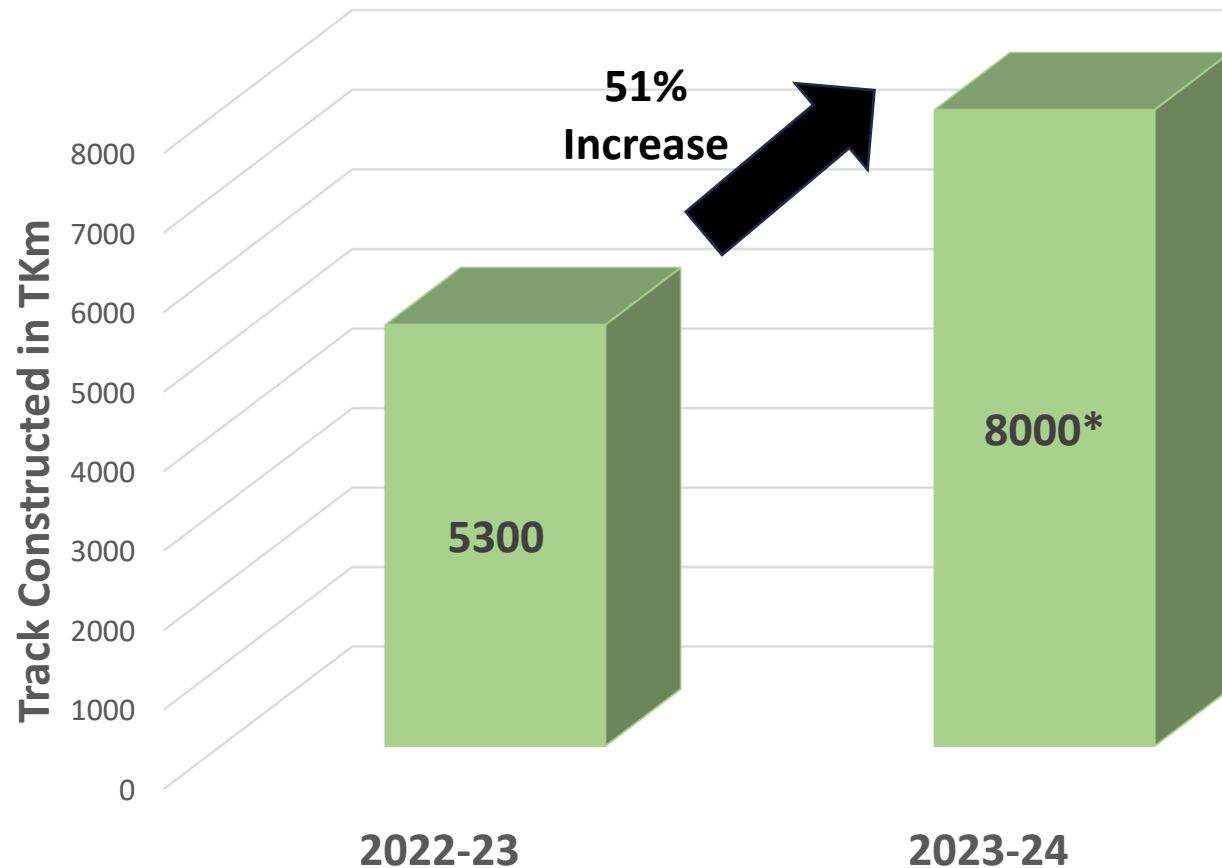
### 3. Reinforcement Steel for DFC Structures



**Total Steel bars in DFC structures: 9.84 lakh Tons**



Trend of Track Construction in Indian Railways



\* Target for FY 2023-24

IR plans to add 40,000 Tkm of new tracks in next 5 years. It means requirement for every year :

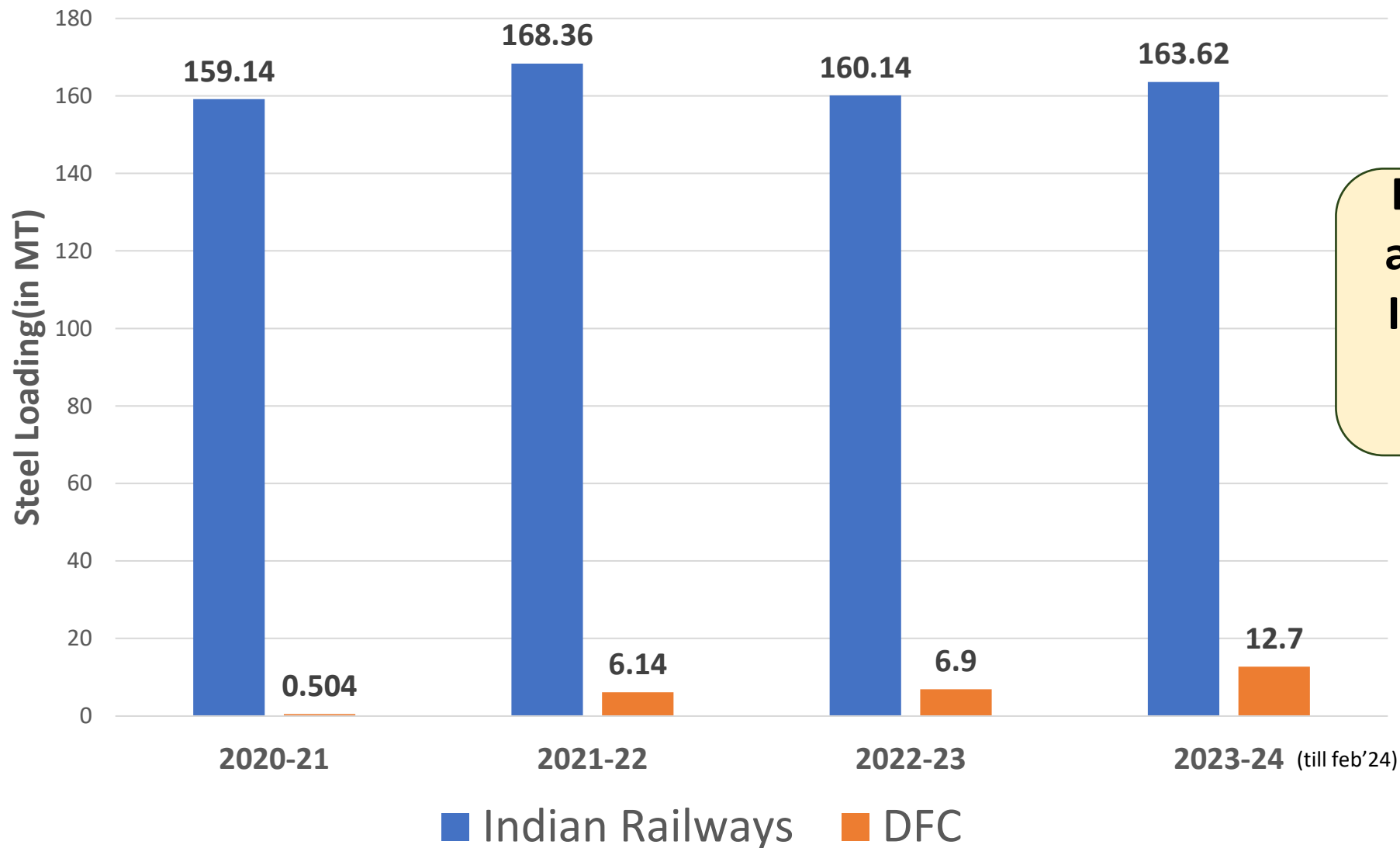
- 1) 9.60 lakh T of Rails
- 2) Approx. 1.4 lakh T Structural Steel
- 3) Approx 1.2 Million T of Reinforcement Steel



# DFC in Steel Transport



# Trend of Loading of Steel over Indian Railways



**DFC comprises around 4.6% of IR network but carries 8% of total steel**



# Future Projects



# Status of Survey/DPRs for New DFCs

SN	Corridor	Section	Length
1	East Coast	Kharagpur-Vijaywada (Tenali)	1078 km
2	East west	Palghar-Bhusawal-Dankuni	2106 km
		Rajkharswan-Andal	200 km
3	North-South	Itarsi- Vijaywada	931 km
	<b>TOTAL</b>		<b>4315 km</b>

DPRs for New DFCs have been submitted to Ministry of Railways for further approvals







Thank You

