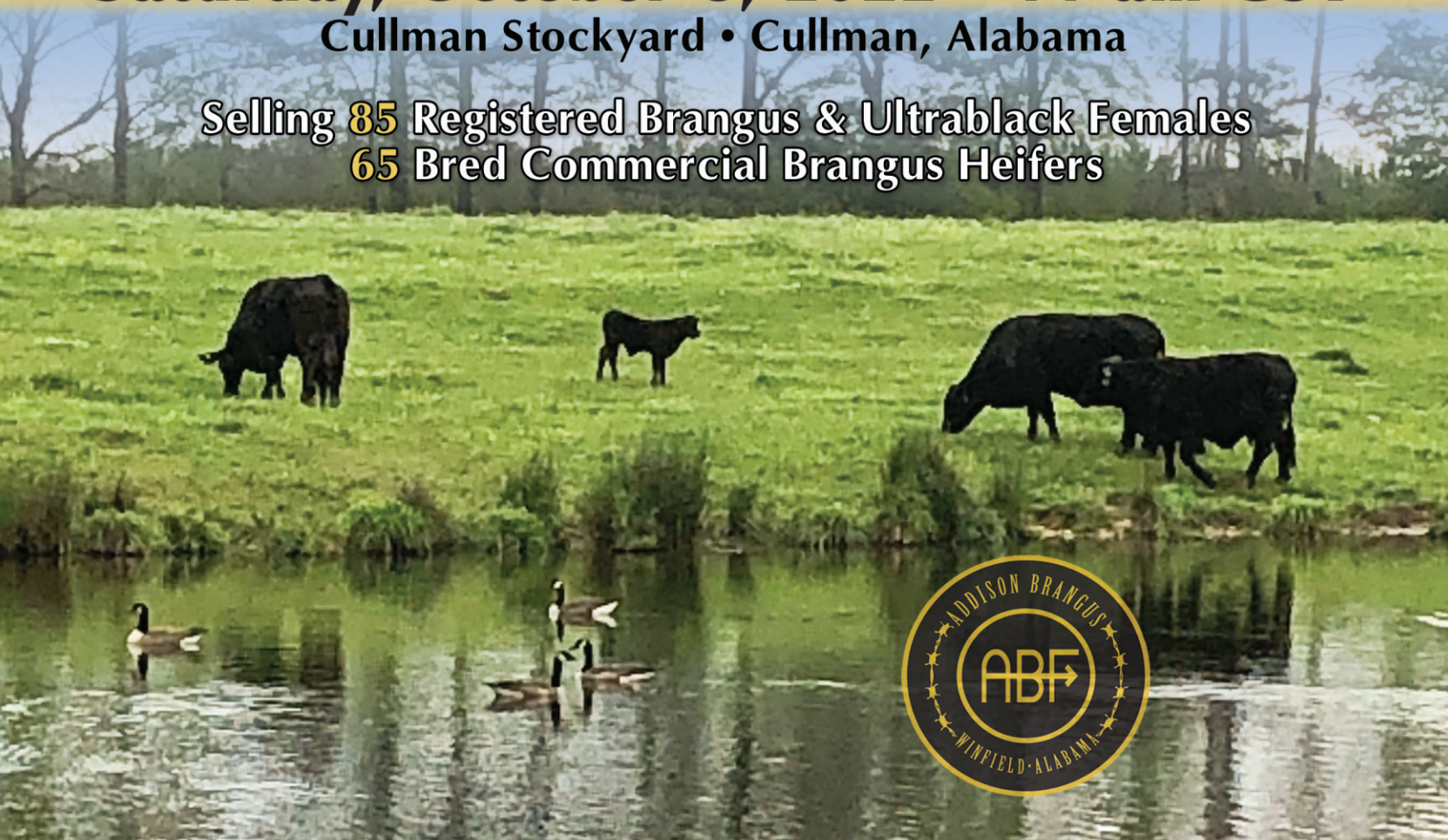


ADDISON BRANGUS FARMS AND FRIENDS PERFORMANCE SALE

Saturday, October 8, 2022 • 11 am CST
Cullman Stockyard • Cullman, Alabama

Selling **85** Registered Brangus & Ultrablack Females
65 Bred Commercial Brangus Heifers



Featuring The True Performance Cattle of the Southeast

PERFORMANCE SALE

2021 Scenes from Around the Barn



Addison Brangus Farms PERFORMANCE SALE

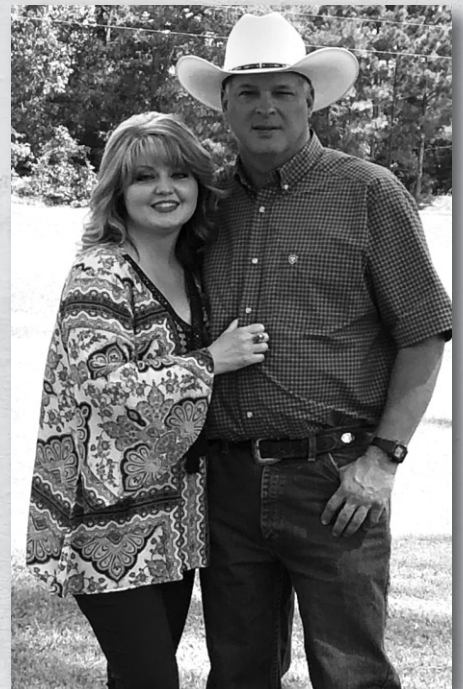
Leisa and I would like to welcome everyone to the 2022 Addison Brangus Farms and Friends Fourth Annual "Performance" Sale

We are very excited to host our fourth sale. The Brangus and Ultrablack cattle in this sale represent our commitment, along with our sale partners' commitments, to the breed's most elite EPDs and superior performance cattle. You will find distinguished genetics and first-rate quality throughout the sale order.

First and foremost, we at Addison Brangus Farms wish to thank our Heavenly Father for allowing us to be where we are today. *Our God has truly blessed us immeasurably, and we give Him all the glory. (Ephesians 5:20)*

Secondly, we want to express our sincerest gratitude to our outstanding sale partners who have labored diligently in preparing their animals for this event. We could not be here without you. The cattle in this sale represent numerous farms and ranches located widely over the Southeast.

Also, we would like to express our genuine appreciation to all of the following for their immense help with our sale: Catalog Coordinator, Lea Stokes; Auctioneer, Doak Lambert; Cattle Solutions, Kyle Devoll; Wade and Blaine Fisher and the staff at IDEAL Video Productions; Ringmen, Jimmy Fetner, Tim Dietrich, and Michael Sturgess; and last but not least, Hoagie and Callahan Parish and their crew at the Cullman Stockyard.



WAYNE & LEISA ADDISON

In conclusion, the "Performance" Sale is offering a comprehensive variety of Brangus and Ultrablack cattle. These cattle include open and bred heifers, cow/calf pairs, 3-N-1's, donor prospects, embryo lots, bred cows, and show animal prospects. Also, following the registered sale, we will have our open and bred commercial heifer sale. These commercial heifers will be sired by, exposed to or AI'd to an Addison Brangus Farms bull.

The Addison Brangus Farms and Friends "Performance" Sale offers something for everyone. Please allow us to assist you in your cattle program.

Sincerely,

Wayne & Leisa

Wayne and Leisa

Wayne and Leisa Addison
(205) 412-5356



**THE RESULT OF OUR VERY FIRST
BRANDING AT ADDISON BRANGUS FARMS!**

Addison Brangus Farms

PERFORMANCE SALE

Saturday, October 8, 2022 • 11 am CST
Cullman Stockyard, Cullman, Alabama

Hosted by Addison Brangus Farms



ADDISON BRANGUS FARMS

Wayne & Leisa Addison • (205) 412-5356
1043 County Highway 130
Winfield, Alabama 35594
AddisonBrangusFarms.com
addisonbrangusfarms@yahoo.com

Auctioneer

Doak Lambert • (972) 839-6485
License #908



Sale Location

Cullman Stockyard *Easily accessed from*
75 County Road 1339 *I-65 & Highway 157*
Cullman, Alabama 35058

Located just 5 minutes east of Interstate 65 Exit 310 in Cullman.

SCHEDULE

FRIDAY, OCTOBER 7

12 Noon Cattle available for viewing
Cullman Stockyard

SATURDAY, OCTOBER 8

8 AM Coffee Available
8 AM Cattle available for viewing
11 AM **The Performance Sale**, Cullman Stockyard

SALE SITE

Cullman Stockyard • (256) 734-4531
Hoagie Parish • Callahan Parish *Easily accessed from*
75 County Road 1339 *I-65 & Highway 157*
Cullman, Alabama 35058

Accommodations

Hampton Inn • (256) 739-4444
6100 Alabama Highway 157 • Cullman, Alabama

Holiday Inn Express • (256) 736-1906
2052 Hayes Drive NW • Cullman Alabama

Comfort Suites • (256) 255-5999
2048 St Joseph Dr NW • Cullman, Alabama

La Quinta Inn & Suites • (256) 775-9500
2054 St. Joseph Dr. NW • Cullman, Alabama

Publications Represented

Southern Livestock Standard – Michael Sturgess
Special Assignment – Jimmy Fetner
Special Assignment – Tim Dietrich
Brangus Journal • *Alabama Cattleman*
Cattle Business in Mississippi

Catalog Production

The Horseshoe Group • Lea Stokes • (210) 872-2727

Air Transportation

Birmingham-Shuttlesworth International Airport

Trucking

Clayton Williams (706) 768-3533 • Jimmy Fetner (334) 863-0115
Trucking will be available sale day.

Load Out

Cattle may be loaded out during or after the sale and after proper settlement is made.

Health Papers

Health papers will be provided on each lot in the sale suitable for interstate shipment.

Terms and Conditions

Refer to the inside back cover.

PLEASE BRING THIS CATALOG WITH YOU SALE DAY!

This sale will be broadcast live on the internet.

DVAuction
Broadcasting Real-Time Auctions

Real time bidding & proxy bidding available.

CONSIGNORS

ADDISON BRANGUS FARMS

Wayne & Leisa Addison, (205) 412-5356
Winfield, Alabama
Lots 111, 120, 143, 144, 145, 146, 180, 181, 182,
183, 204, 205, 206, 210, 211, 212, 213

AMERICAN CATTLE ENTERPRISES (ACE)

Richard Hood, (979) 224-6150
Trey Kirkpatrick, (979) 324-5518
Effie, Louisiana, Blountsville, Alabama
Fairmount, Georgia
Lots 132, 133

AV BRANGUS

Alan & Miranda Varner, (931) 212-2682
McMinnville, Tennessee
Lots 186, 187

B2K FARM

Brett Basden, (334) 444-6258
Auburn, Alabama
Lots 129, 190, 191

BLACK OAK CATTLE COMPANY

Darryl Traylor, (256) 717-8108
Rainsville, Alabama
Lot 162

BOOT HILL FARMS

Jamie Dykes, (334) 695-5865
Louisville, Alabama
Lots 159, 160, 161

CEDAR JUNCTION BRANGUS

Chris Shelton, (662) 983-8024
Bruce, Mississippi
Lots 106, 106A

COLD CREEK RANCH

Tom, Betty, and Sean Davis, (404) 406-1428
Butler, Georgia
Lots 167, 168

DS FARMS

Davy & Wendy Sneed, (931) 934-2184
McMinnville, Tennessee
Lot 192

EALUM CATTLE COMPANY

Jason Ealum, (251) 277-1633
Georgiana, Alabama
Lots 201, 240-253

EAST RIDGE CATTLE

Geoffrey Lingerfelt, (256) 996-7141
Ft. Payne, Alabama
Lots 165, 166

EC BRANGUS, LLC

Evon & Carol Crooks, (336) 817-6890
Mocksville, North Carolina
Lots 135, 136

EVITTS FARMS

Jason & Chad Evitts, (615) 633-2879
Dixon Springs, Tennessee
Lots 169, 170, 171

GALLOWAY BRANGUS FARM

Larry Galloway, (256) 603-1945
Lance Galloway, (256) 924-5571
Huntsville, Alabama
Lots 122, 126, 153, 155

HARTNESS BRANGUS

Steve Hartness, (423) 426-4028
Greenville, Tennessee
Lots 173, 175, 176, 194A, 194B, 199A, 199B

HAYNES FARMS

Danny Haynes, (256) 493-0787
Ashland, Alabama
Lots 139, 140, 141, 142

J-1 BRANGUS

Jake Dalton, (678) 725-5521
Commerce, Georgia
Lots 124, 163, 197

JRT BRANGUS

Jeff Thomas, (770) 289-6539
Cumming, Georgia
Lots 101, 101A, 147, 148, 184

K & K FARMS

Keith Dyer, (205) 367-7603
Gordo, Alabama
Lots 207, 208, 209

LAS PALOMAS RANCH

Jose Medina, (678) 384-9447
Marietta, Georgia
Lots 105, 105A, 125, 137

L&W CATTLE COMPANY

Doug & Glenda Williams, (336) 745-5252, cell
Mocksville, North Carolina
Lots 151, 152

MAGNOLIA CREEK BRANGUS

Paul Necaie, (228) 304-7523
Kiln, Mississippi
Lots 113, 114, 115, 172, 185

MNR CATTLE

Madilyn Nichols & Payge Dupre
Melissa & Reggie Nichols, (863) 529-9585
Kathleen, Florida
Lots 200A, 200B

JOHN NORRIS

(205) 412-3398
Winfield, Alabama
Lots 286-300

PINE KNOTT CATTLE CO.

Jeremy and Hayley Sessoms, (336) 408-8174
Bennett, North Carolina
Lots 116, 123, 164

QUINN CATTLE COMPANY

Jon P. Quinn, (731) 507-2841
Union City, Tennessee
Lots 138, 214, 215

ROADRUCK BRANGUS CATTLE

David Roadruck, (256) 582-1950
Huntsville, Alabama
Lot 157

SOMERS VALLEY CATTLE COMPANY

Stephanie Warbis, (479) 621-3481
Rogers, Arkansas
Lots 195A, 195B

STINSON BRANGUS FARMS

Alvin & Debbie Stinson, (904) 607-5610
Georgiana, Alabama
Lots 202, 203, 217-239

THE BOYS CATTLE COMPANY

Craig Green, (870) 834-1976
Floral, Arkansas
Lot 174

TTT RANCHES, LLC

Jimmy Trice & Family, (205) 270-6488
Fayette, Alabama
Lots 102, 102A, 150, 189

2 OAKS BRANGUS

Todd Keeling, (417) 389-0468
Granby, Missouri
Lots 112, 121, 196A, 196B, 196C

VANNA FARMS

Lee McGarity, (706) 498-7695
Royston, Georgia
Lots 177, 178, 179, 193A, 193B, 198A, 198B

WINDLASS FARMS, LLC

Mike Cocchiaro, (512) 745-4795
Hillsborough, North Carolina
Lots 103, 103A, 104, 104A, 188

WHITLEY CATTLE COMPANY

Steve Whitley, (919) 632-5107
Smithfield, North Carolina
Lots 198A, 198B



Stonewall of RRR 222W6 • Sire of Lot 101 *nancy*

101 MS SALACOA STONEWALL 332D2

Born: 2/2/16 R10314838 Gen: 7 PHN: 332D2 3-in-1 JRT Brangus

STONEWALL OF RRR 222W6
R10150860

CSONKA OF BRINKS 30R4
MS BRINKS LOMBARDI 222S20

LEAD GUN OF BRINKS 222K14
MISS BRINKS UPPERCUT 30L18
LOMBARDI OF BRINKS 468N10
MISS BRINKS PICASSO 222K
LAMBERT OF BRINKS 317R3
MS BRINKS BRIGHT SIDE 209L11
SR CADENCE WARRIOR P456
SR WARRIOR PRINCESS N332

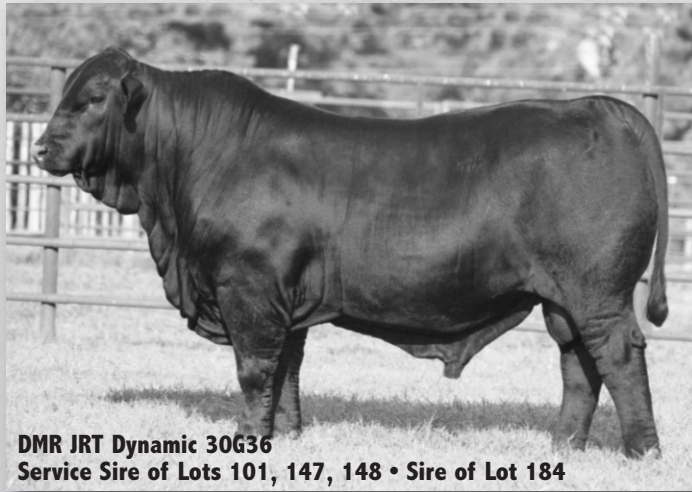
MS SALACOA NEW VISION 332B9
R10262111

NEW VISION OF SALACOA 209Y2
TCB KIOWA PRINCESS U435

BW	WW	YW	REA	FT	IMF											
75 (106%)	555 (105%)	971 (116%)	12.64 (108%)	0.48 (129%)	6.12 (122%)											
CED	BW	WW	YW	M	TM	CEM	SC	REA	IMF	FT	Hfr	Prg	Stay	Cow Wt	TI	FI
1	1	37	70	8	27	2.51	0.65	0.63	0.21	0.023	6.08	0.97	-22.86	3.64	0.98	

Ms Salacoa Stonewall 332D2 was our choice of the bred heifers in the 2017 SVF sale! She records top 35% or greater EPDs for 10 Traits led by top 4% REA, 10% YW, terminal index, and 15% WW. She posted big performance numbers with a (105) WW ratio, (116) YW ratio, and scanned 6.12 IMF for a (122) ratio, and a 12.64 REA for a (108) ratio. Her Majestic Beacon daughter sold for \$7000 to our good friend Terry Moody in the SBBA sale last year. She sells with a good Eldorado heifer at side and has a great disposition.

Breeding: Pasture exposed to DMR Eldorado 30B15, R10284830 from 5/22/22 to 7/29/22 and DMR JRT Dynamic 30G36, R10434661 from 7/29/22 to 8/29/22.



DMR JRT Dynamic 30G36
Service Sire of Lots 101, 147, 148 • Sire of Lot 184

101A JRT MS ELDORADO 332K

Born: 5/23/22 R10506048 Gen: 6 PHN: 332K Heifer Calf JRT Brangus

DMR ELDORADO 30B15
R10284830

TJM CORONADO 535X
SUHN'S MISS PATTON 30X6

CB HOMBRE 541T3
MS BRINKS LAMBERT 535T4
PATTON OF BRINKS 30T22
SUHN'S MS DUKE 30M
CSONKA OF BRINKS 30R4
MS BRINKS LOMBARDI 222S20
NEW VISION OF SALACOA 209Y2
TCB KIOWA PRINCESS U435

MS SALACOA STONEWALL 332D2
R10314838

STONEWALL OF RRR 222W6
MS SALACOA NEW VISION 332B9

BW	WW	YW	REA	FT	IMF											
80 (101%)																
CED	BW	WW	YW	M	TM	CEM	SC	REA	IMF	FT	Hfr	Prg	Stay	Cow Wt	TI	FI
4.9	0.4	34	59	0	18	2.99	0.77	0.39	0.23	0.011	5.84	1.3	-15.3	3.07	1.19	

Eldorado daughter with 10 EPDs in the top 25%.



ABF Customer Testimonial

A few years ago we decided to shift gears with our show cattle breeding program and go back to the basics. We were looking for a few good registered Brangus cows, a foundation for us to utilize performance genetics, breed them to show genetics and turn it into what we called the perfect blend. We purchased ABF Defender 535D from the Addison sale along with one from JRT Brangus. Since then Wayne has spent many hours on the phone explaining to me the performance world and what EPDs I need to focus on.

His time and knowledge along with his support of the junior program over the last 3 years has been greatly appreciated.

We now have more genetics from Wayne and Jeff and are proud to say we've been able to successfully flush these genetics and look forward to what our Brangus and Ultrablack program will look like in a few more years.

We believe that our success has been great because Wayne Addison sells some of the most complete cattle and his consigners do the same, we look forward to the 2022 ABF Performance Sale.

Melissa Nichols, Kathleen, Florida

102 TTT MS HOLLYWOOD 541E

Born: 10/1/17 R10358793 Gen: 7 PHN: 541E 3-in-1 TTT Ranches, LLC

HOLLYWOOD OF SALACOA 23A53
R10251840

NEW VISION OF SALACOA 209Y2

MS SVF PATTON 23Y66

CRC GUARDIAN 9U8U5

MS DMR RIGGINS 541U2

LAMBERT OF BRINKS 317R3
MS BRINKS BRIGHT SIDE 209L11
PATTON OF BRINKS 30T22
SVF MS 23M28
CSONKA OF BRINKS 30R4
MISS 4L BEST BET 9U8P5
RIGGINS OF BRINKS 55R12
MS BRINKS NIMITZ 541N29

MS DMR GUARDIAN 541X14
R10189855

BRANGUS
GE-EPDS

BW	WW	YW	REA	FT	IMF										
70 (86%)	624 (99%)	997 (105%)	12.13 (106%)	0.42 (99%)	3.37 (90%)										
CED	BW	WW	YW	M	TM	CEM	SC	REA	IMF	FT	Hfr Prg	Stay	Cow Wt	TI	FI
5.2	0.1	31	65	-1	13	1.93	0.92	0.64	0.17	0.001	10.05	2.34	-12.04	3.37	2.22

With 11 traits in the top 35%, this cow has a lot of use progeny left to produce. Stemming from Guardian on bottom with Hollywood on top, 541E has got the pedigree to back her.

Breeding: Pasture exposed to DMR Windfall 535H13, R10449409 from 5/15/22 to 7/30/22. Confirmed bred.



RICHMOND
HOLLYWOOD OF SALACOA 23A53 • Sire of Lot 102

102A TTT MS CASH FLOW 541J2

Born: 12/8/21 UB10507964 Gen: 1 PHN: 541J2 Heifer Calf TTT Ranches, LLC

DMR CASH FLOW 535F30
UB10386538

S A V RESOURCE 1441

MS DMR CORONADO 535A8

HOLLYWOOD OF SALACOA 23A53

MS DMR GUARDIAN 541X14

RITO 707 OF IDEAL 3407 7075
S A V BLACKCAP MAY 4136
TJM CORONADO 535X
SVF MS 535M31
NEW VISION OF SALACOA 209Y2
MS SVF PATTON 23Y66
CRC GUARDIAN 9U8U5
MS DMR RIGGINS 541U2

TTT MS HOLLYWOOD 541E
R10358793

BW	WW	YW	REA	FT	IMF										
69 (92%)															
CED	BW	WW	YW	M	TM	CEM	SC	REA	IMF	FT	Hfr Prg	Stay	Cow Wt	TI	FI
3.8	0.5	45	82	3	25	1	0.76	0.76	0.26	0.015	8.49	2.13	-7.68		

Balance and style are what come to mind when we evaluate this Cash Flow daughter. Her easy-going disposition will help make her a crowd favorite. Take her home and breed her to the bull of your choice this fall. Sells open.



DMR Windfall 535H13 • Service Sire of Lots 102, 113

103 MS DMR STRATEGY 594E34

Born: 9/1/17 R10373444 Gen: 6 PHN: 594E34 3-in-1 Windlass Farm

DMR STRATEGY 263C6
R10318980

TJM CORONADO 535X

MS CRC CSONKA 263U

CRC GUARDIAN 9U8U5

WR MS DUKE 59457

CB HOMBRE 541T3
MS BRINKS LAMBERT 535T4
CSONKA OF BRINKS 30R4
MS HD BRIGHT SIDE 263L
CSONKA OF BRINKS 30R4
MISS 4L BEST BET 9U8P5
WR DUKE 228/F
WR MS TRANSFORMER VI 594N3

MS DMR GUARDIAN 594A11
R10254763

BRANGUS
GE-EPDS

BW	WW	YW	REA	FT	IMF										
70 (99%)	544 (100%)	779 (100%)													
CED	BW	WW	YW	M	TM	CEM	SC	REA	IMF	FT	Hfr Prg	Stay	Cow Wt	TI	FI
2	1.2	27	50	5	19	2.14	0.92	0.32	0.33	0.002	4.32	2.12	1.66	2.89	1.92

Strategy daughter that has six traits in the top 25%, including 20% WW and IMF and 10% Heif Preg. Strategy was the \$39,000 top-selling herd sire in the 2016 CRC sale. The daughters have been recognized for their udder conformation. This female is perfect for a program looking for a cow with a moderate frame. She has been a consistent producer on our farm and has a gentle disposition to go along with her impressive genetics.

Breeding: AI'd to BWCC Burly 889G40, R10444699 on 6/29/22. Pasture exposed to ELC Mr SF Brickhouse 535H, R10435591. Safe to AI.

103A WF ABSTRACT 594K2

Born: 3/20/22 UB10496168 Gen: 1 PHN: 594K2 Bull Calf Windlass Farm

VOREL ABSTRACT 25E9
UB10381649

MAR INNOVATION 251

VOREL MS 30T 25Z

DMR STRATEGY 263C6

MS DMR GUARDIAN 594A11

MS DMR STRATEGY 594E34
R10373444

CONNELY IMPRESSION
MAR FINAL KAHUNA 856
SUHN'S AFFIRMED 30T
VOREL MS NEWT 2 / 25W
TJM CORONADO 535X
MS CRC CSONKA 263U
CRC GUARDIAN 9U8U5
WR MS DUKE 59457

BW	WW	YW	REA	FT	IMF										
85 (111%)															
CED	BW	WW	YW	M	TM	CEM	SC	REA	IMF	FT	Hfr Prg	Stay	Cow Wt	TI	FI
1.6	1.1	38	69	6	26	2.35	1.09	0.48	0.23	0.004	1.58	1.71	5.31	3.6	1.48

This herd sire prospect boasts seven traits in the top 20%, including top 10% WW, YW and SC. Abstract offspring are long spined, deep bodied and have good sheath design. This calf has a great disposition, and we are excited to see what he can do in the future.

104 PB MS GUARDIAN 468D

Born: 10/12/16 R10332936 Gen: 6 PHN: 468D 3-in-1 Windlass Farm

CRC GUARDIAN 9U8U5
R1022023

CSONKA OF BRINKS 30R4
MISS 4L BEST BET 9U8P5

LEAD GUN OF BRINKS 222K14
MISS BRINKS UPPERCUT 30L18
MBR MR BB 44M2
MISS 4L PATHFINDER 9U8M
CB HOMBRE 541T3
MS BRINKS LAMBERT 535T4
CSONKA OF BRINKS 30R4
MISS BRINKS LEAD TIME 468L

RYR MISS C 535X-468A7
R10246219

TJM CORONADO 535X

MS ROBERTS CSONKA 468U2

BW	WW	YW	REA	FT	IMF										
55 (81%)	652 (107%)	836 (100%)	10.5 (97%)	0.25 (115%)	4.62 (108%)										
CED	BW	WW	YW	M	TM	CEM	SC	REA	IMF	FT	Hfr Prg	Stay	Cow Wt	TI	FI
9.3	-0.9	35	57	7	25	3.98	0.72	0.27	0.21	-0.004	7.72	2.65	7.37	3.14	2.23

Boasting nine EPDs in the top 25% this female will be a great addition to any herd. She is moderate, feminine, docile and has excellent udder conformation.

Breeding: AI'd to BWCC Mile Marker 889E32, R10359796 on 6/29/22. Pasture exposed to ELC MR SF Brickhouse 535H, R10435591. Safe to AI.

104A WF ABSTRACT 468K

Born: 3/17/22 UB10496166 Gen: 1 PHN: 468K Bull Calf Windlass Farm

VOREL ABSTRACT 25E9
UB10381649

MAR INNOVATION 251
VOREL MS 30T 25Z

CONNELLY IMPRESSION
MAR FINAL KAHUNA 856
SUHN'S AFFIRMED 30T
VOREL MS NEWT 2 / 25W
CSONKA OF BRINKS 30R4
MISS 4L BEST BET 9U8P5
TJM CORONADO 535X
MS ROBERTS CSONKA 468U2

PB MS GUARDIAN 468D
R10332936

CRC GUARDIAN 9U8U5

RYR MISS C 535X-468A7

BW	WW	YW	REA	FT	IMF										
67 (87%)															
CED	BW	WW	YW	M	TM	CEM	SC	REA	IMF	FT	Hfr Prg	Stay	Cow Wt	TI	FI
9	-1.4	39	68	7	27	3.28	0.99	0.45	0.17	0	3.33	1.98	8.16	3.68	1.63

This low BW bull calf demonstrates nine EPDs in the top 20%. With WW and YW in the top 15% he is sure to add growth and power to your herd.

105 CLVR MS MARLBORO 594H

Born: 2/3/20 R10437913 Gen: 6 PHN: 594H 3-in-1 Las Palomas Ranch

CLVR MARLBORO 99A5
R10251457

NEW VISION OF SALACOA 209Y2
101 MS PATTON 99X9

LAMBERT OF BRINKS 317R3
MS BRINKS BRIGHT SIDE 209L11
PATTON OF BRINKS 30T22
MS BRINKS NIMITZ 99P52
CSONKA OF BRINKS 30R4
MISS 4L BEST BET 9U8P5
WR DUKE 228/F
WR MS TRANSFORMER VI 594N3

MS DMR GUARDIAN 594A6
R10254777

CRC GUARDIAN 9U8U5

WR MS DUKE 594S7

BRANGUS
GE-EPDS

BW	WW	YW	REA	FT	IMF										
79 (99%)															
CED	BW	WW	YW	M	TM	CEM	SC	REA	IMF	FT	Hfr Prg	Stay	Cow Wt	TI	FI
-0.2	1.6	37	66	4	23	3.22	1.13	0.59	0.2	-0.011	5.28	0.77	-6.28	3.45	0.74

A young Marlboro daughter out of a Guardian dam from Draggin' M. She has nine GE EPD traits ranking in the top 20% or better. Of those nine include top 5% for SC and REA, top 10% for WW, FT and Term Index and top 15% for WW. Check out her May bull calf at side.

Breeding: Pasture exposed to HF/Oaks Csonka 1302E8, R10359547 from 6/28/22 to sale day.

105A LP TREASURE 594K2

Born: 5/6/22 R10508317 Gen: 7 PHN: 594K2 Bull Calf Las Palomas Ranch

CLVR TREASURE 26G3
R10417710

CLVR TREASURE 99A14
CB MS PASSPORT 2B

NEW VISION OF SALACOA 209Y2
101 MS PATTON 99X9
CB PASSPORT 803Y11
CB MS BT 2U
NEW VISION OF SALACOA 209Y2
101 MS PATTON 99X9
CRC GUARDIAN 9U8U5
WR MS DUKE 594S7

CLVR MS MARLBORO 594H
R10437913

CLVR MARLBORO 99A5

MS DMR GUARDIAN 594A6

BW	WW	YW	REA	FT	IMF										
81 (100%)															
CED	BW	WW	YW	M	TM	CEM	SC	REA	IMF	FT	Hfr Prg	Stay	Cow Wt	TI	FI
3.4	0.3	27	49	3	17	3.0	0.91	0.29	0.15	0.000	3.80	0.49	-7.64		

A small package with big potential. This young bull calf weighed in at 75 pounds at birth. Look at the big name Brangus in his pedigree.

106 5K MRS STRATUS 98H2

Born: 3/17/20 R10467912 Gen: 4 PHN: 98H2 Pair Cedar Junction Brangus

DMR STRATUS 263C5
R10318981

TJM CORONADO 535X
MS CRC CSONKA 263U

CB HOMBRE 541T3
MS BRINKS LAMBERT 535T4
CSONKA OF BRINKS 30R4
MS HD BRIGHT SIDE 263L
LAMBERT OF BRINKS 317R3
MS BRINKS BRIGHT SIDE 209L11
BEAR BRYANT OF BRINKS 1000N6
MISS BRINKS SUNDANCE 98K5

5K MS NEW VISION 98D
R10352955

NEW VISION OF SALACOA 209Y2

MISS 5K BEARBRYANT 98R

BW	WW	YW	REA	FT	IMF										
87 (114%)	618 (96%)	700 (100%)													
CED	BW	WW	YW	M	TM	CEM	SC	REA	IMF	FT	Hfr Prg	Stay	Cow Wt	TI	FI
0.8	2.5	28	53	4	18	1.66	0.49	0.3	0.08	0	3.3	0.54	-14.94	2.3	0.67

This DMR Stratus daughter proves herself to be a functional and productive asset to your herd. She brings a heifer calf from an AI mating to the DMR Louisiana Purchase 924D10. She calved unassisted and milks like none other, not to mention the fact that she has a good disposition. This is a pair worth a second look. She's got a lot of miles left and is set to be a valuable piece of the puzzle. She's not extreme in any area, but a very well-balanced female ready to work for you!

106A CJB MS LA PURCHASE 98K1

Born: 8/25/22 R10507839 Gen: 5 PHN: CJB98K1 Heifer Calf Cedar Junction Brangus

DMR LOUISIANA PURCHASE 924D10
R10323539

TJM THREE D 302A
RBM MS JETHRO 924W5

CB FINAL CUT 924X
OAKS MS PATTON 302X3
MC JETHRO 00S3
MISS NMSU 924
TJM CORONADO 535X
MS CRC CSONKA 263U
NEW VISION OF SALACOA 209Y2
MISS 5K BEARBRYANT 98R

5K MRS STRATUS 98H2
R10467912

DMR STRATUS 263C5

5K MS NEW VISION 98D

BW	WW	YW	REA	FT	IMF										
74 (104%)															
CED	BW	WW	YW	M	TM	CEM	SC	REA	IMF	FT	Hfr Prg	Stay	Cow Wt	TI	FI
3.5	0.9	29	48	2	16	2.3	0.61	0.3	-0.04	0.003	5.02	1.63	-2.91		

111 ABF MS DEFENDER 27D

Born: 2/10/16 R10318580 Gen: 6 PHN: 27D Fall Bred Cow Addison Brangus Farms

DMR DEFENDER 594A20
R10254773

CRC GUARDIAN 9U8U5

WR MS DUKE 594S7

CCR SLEEP EASY 278P2

WHIS BQ

CSONKA OF BRINKS 30R4
MISS 4L BEST BET 9U8P5
WR DUKE 228/F
WR MS TRANSFORMER VI 594N3
CCR SLEEP EASY 334L
CCR MARIE 278J
CAWTHON'S MR. IMPACK
MISS WINDAC 32/R

ABF MS IMPACT
R10104710

BW	WW	YW	REA	FT	IMF										
90 (105%)	636 (97%)	905 (100%)	11.23 (102%)	0.12 (68%)	2.41 (91%)										
CED	BW	WW	YW	M	TM	CEM	SC	REA	IMF	FT	Hfr Prg	Stay	CowWt	TI	FI
-5.7	4.9	26	43	9	23	3.34	0.33	0.17	-0.06	-0.035	0.35	0.93	2.05	1.36	1.47

Ms Defender has been a good cow for Addison Brangus Farms. She has a 364-day calving interval on her first three calves. She was then moved to our fall calving season. 27D will have her fifth calf shortly after sale day. Ms Defender has eight EPD traits breed average or better, including top 1% FT and 35% WW. This female also has performance, 636 pound WW and 905 pound YW. She is a gentle cow with plenty of thickness and bone. Don't miss this opportunity to own this great female, that is in the prime of her life. Black Granite or Blackstone, she should have an outstanding calf.

Breeding: AI'd to ABF Black Granite 23D5, R10333005 on 1/30/22. Pasture exposed to ABF Blackstone 23G2, R10410461 from 2/10/22 to 3/7/22. Safe to AI date.



ABF Ms Defender 27D

112 PLB MS GAMECHANGER 331E2

Born: 3/24/17 R10344596 Gen: 5 PHN: 331E2 Fall Bred Cow 2 Oaks Brangus

MC GAME CHANGER 127Y42
R10201653

MC SOMETHING SPECIAL 129W14

MC MS LUCIA 127W

BURTIN'S TRANSFORMER 803G3

SUHN'S MS CADENCE 331M3

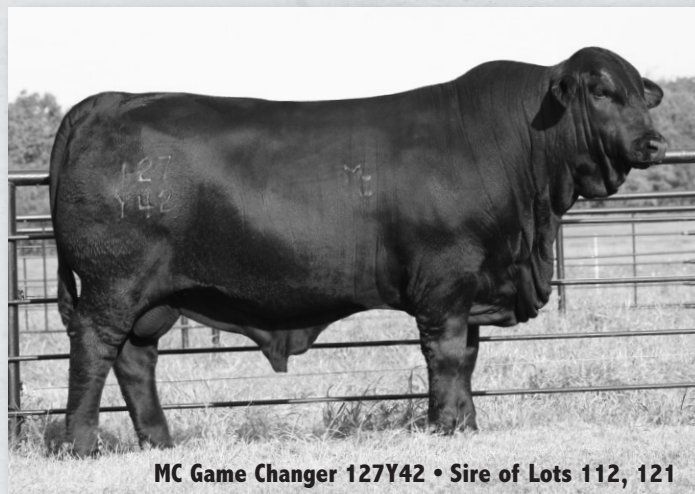
MC JETHRO 00S3
MC MS LEAD GUN 129T12
LUKE OF BRINKS 784P14
MC MS EASY MONEY 127K11
TRANSFORMER OF BRINKS
BURTIN'S MISS MILKY WAY 803E
CADENCE OF BRINKS
SUHN'S MISS PROMISE 331J12

CB MS BT 331S8
R10084453

BW	WW	YW	REA	FT	IMF										
67 (90%)															
CED	BW	WW	YW	M	TM	CEM	SC	REA	IMF	FT	Hfr Prg	Stay	CowWt	TI	FI
0	2.2	34	74	13	30	4.42	0.85	0.4	0.23	0.015	4.48	1.66	-8.88	3.7	1.69

Nice daughter of the \$40,000 MC Game Changer whose dam is a full sister to the great Suhn's Next Step. The 331 cow family has been solid for us and her dam is a Summit Cow. **DDPC**

Breeding: Pasture exposed to DMR Three D 30G82, R10422095 from 12/1/21 to 3/1/22.



MC Game Changer 127Y42 • Sire of Lots 112, 121

113 MCB MS REAL DEAL 468E2

Born: 3/22/17 R10352052 Gen: 4 PHN: 468E2 Fall Bred Cow Magnolia Creek Brangus

SOUTHERN REAL DEAL 409A3
R10261400

SOUTHERN REAL DEAL 468X10

MS SOUTHERN TANK 409W8

MC JETHRO 00S3

MS BRINKS BS 607L11 468S77

MC REAL DEAL 541R3
MS BRINKS BS 607L11 468S78
MC JOHN WAYNE 165N3
MS BRINKS BEST BET 409M3
MC JOHN WAYNE 165N3
MC MS STOUT 00M5
BRINKS BRIGHT SIDE 607L11
MISS BRINKS LEAD TIME 468L

MS SOUTHERN JET 468Y9
R10222045

BRANGUS
GE-EPDS

BW	WW	YW	REA	FT	IMF										
85 (107%)	647 (115%)	805 (102%)	9.54 (104%)	0.35 (157%)	3.4 (81%)										
CED	BW	WW	YW	M	TM	CEM	SC	REA	IMF	FT	Hfr Prg	Stay	CowWt	TI	FI
1.1	2.2	44	77	8	30	4.37	0.89	0.37	0.27	0.03	9.34	2.1	6.84	3.82	0.69

She has an impeccable 10 traits in the top 25% of the breed. Powerful combination of growth, carcass, maternal and fertility. At 11 years old her dam is still a top producer for us. AI bred to Windfall, the maternal sibling to Cash Flow, and due to calve prior to sale date.

Breeding: AI'd to DMR Windfall 535H13, R10449409 on 12/1/21. Pasture exposed to MCB Relax 919H2, UB10442129 from 5/16/22 through 7/31/22. Blood tested safe to AI. ECD: 9/9/22.





MC Big City 541G40 • AI Service Sire of 114

114 MCB MS TEN SPEED 468G1

Born: 1/14/19 UB10403111 Gen: 1 PHN: 468G1 Fall Bred Cow Magnolia Creek Brangus

S A V TEN SPEED 3022
EA17633563

A A R TEN X 7008 S A

S A V MADAME PRIDE 1134

MC JETHRO 0053

MS BRINKS BS 607L11 468S77

MISS SOUTHERN JETHRO 468Y29
R10215764

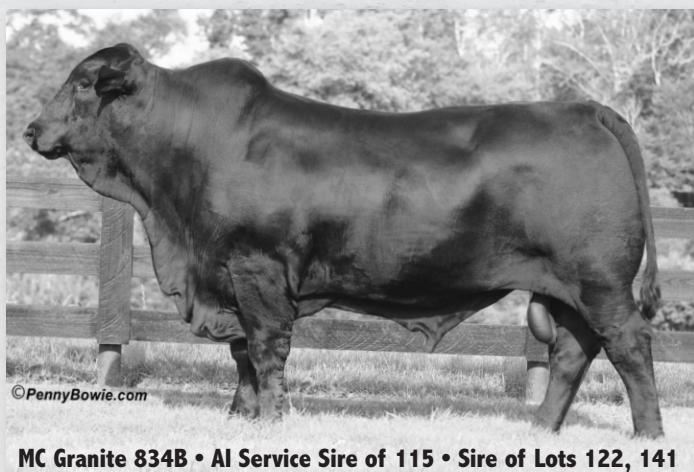
BRANGUS
GE-EPDS

MYTTY IN FOCUS
A A R LADY KELTON 5551
S A V BISMARCK 5682
S A V MADAME PRIDE 9100
MC JOHN WAYNE 165N3
MC MS STOUT OOM5
BRINKS BRIGHT SIDE 607L11
MISS BRINKS LEAD TIME 468L

BW	WW	YW	REA	FT	IMF										
83 (100%)	659 (107%)	809 (96%)													
CED	BW	WW	YW	M	TM	CEM	SC	REA	IMF	FT	Hfr Prg	Stay	Cow Wt	TI	FI
1.1	3	44	71	6	28	3.59	0.53	0.59	0.33	0.018	7.28	2.41	3.59	3.76	1.57

Young cow with tremendous growth, carcass, and fertility in her EPD profile with nine EPD traits in the top 15%. We like her first calf by Granite. She's now AI bred to the exciting Big City bull and should calve about a month after sale date. This gentle cow has a bright future ahead of her.

Breeding: AI'd to MC Big City 541G40, UB10449614 on 2/4/22. Pasture exposed to MCB Relax 919H2, UB10442129 from 5/16/22 through 7/31/22. Blood tested safe to AI. ECD: 11/13/22.



©PennyBowie.com

MC Granite 834B • AI Service Sire of 115 • Sire of Lots 122, 141

115 MCB MS TEN SPEED 468F11

Born: 1/18/18 UB10374108 Gen: 1 PHN: 468F11 Fall Bred Cow Magnolia Creek Brangus

S A V TEN SPEED 3022
EA17633563

A A R TEN X 7008 S A

S A V MADAME PRIDE 1134

MC JETHRO 0053

MS BRINKS BS 607L11 468S77

MISS SOUTHERN JETHRO 468Y29
R10215764

BRANGUS
GE-EPDS

MYTTY IN FOCUS
A A R LADY KELTON 5551
S A V BISMARCK 5682
S A V MADAME PRIDE 9100
MC JOHN WAYNE 165N3
MC MS STOUT OOM5
BRINKS BRIGHT SIDE 607L11
MISS BRINKS LEAD TIME 468L

BW	WW	YW	REA	FT	IMF										
75 (99%)	561 (97%)	840 (98%)	9.73 (91%)	0.12 (72%)	3.53 (117%)										
CED	BW	WW	YW	M	TM	CEM	SC	REA	IMF	FT	Hfr Prg	Stay	Cow Wt	TI	FI
2.8	2.1	39	67	4	24	3.84	0.53	0.59	0.33	0.018	7.28	2.42	3.59	3.66	1.54

Powerful cow with an impressive eight relevant traits in the top 15%. These include 5% Stay, REA; 10% WW, YW, IMF, HP, Term; and 15% Fertility. AI bred to Granite and should be a pair by sale date.

Breeding: AI'd to MC Granite 834B, UB10275960 on 12/23/21. Pasture exposed to MCB Relax 919H2, UB10442129 from 5/16/22 through 7/31/22. Blood tested safe to AI. ECD: 10/1/22.



ELC Ms. High Steaks 839F

116 ELC MS. HIGH STEAKS 839F

Born: 11/27/18 R10398735 Gen: 6 PHN: 839F Fall Bred Cow Pine Knot Cattle Co.

OAKS HIGH STEAKS 209B50
R10277703

CB PASSPORT 803Y11

MS BRINKS BRIGHT SIDE 209L11

MC ABRAMS 468T22

MS IRON FARM CASH 839W5

MS IRON FARM ABRAMS 839Y
R10200302

CB HOMBRE 541T3
MS BRINKS LAMBERT 803T6
BRIGHT SIDE OF BRINKS 789G5
MISS BRINKS NEWSDAY 209G9
MC JOHN WAYNE 165N3
MISS BRINKS CADENCE 468G15
IFCC CASH 5137P5
MS IRON FARM 634C7-839H

BW	WW	YW	REA	FT	IMF										
65 (100%)	507 (100%)	854 (100%)	10.48 (100%)	0.16 (100%)	3.54 (100%)										
CED	BW	WW	YW	M	TM	CEM	SC	REA	IMF	FT	Hfr Prg	Stay	Cow Wt	TI	FI
3.3	1	23	48	4	16	3.71	0.42	0.44	0.11	0.001	4.46	0.27	-1.18	2.36	-0.47

She is a big framed, maternal female that weaned our biggest bull calf this past spring. We liked that mating so much that we decided to repeat it and bred her back to our herd sire with EPDs of 10% for YW and Heif Preg, 15% CED and WW which should produce a good growth calf with plenty of eye appeal.

Breeding: Pasture exposed to ELC Mr Beacon 96F5, R10392422 from 2/1/22 to 8/10/22. Safe.



Ms DMR Guardian 468C7

120 MS DMR GUARDIAN 468C7

Born: 2/12/15 R10296914 Gen: 5 PHN: 468C7 Spring Bred Cow Addison Brangus Farms

CRC GUARDIAN 9U8U5
R10122023

MS BRINKS NEW ERA 468P14
R9685456

BRANGUS
GE-EPDS

CSONKA OF BRINKS 30R4

MISS 4L BEST BET 9U8P5

NEW ERA OF BRINKS 541J37

MISS BRINKS CADENCE 468G15

LEAD GUN OF BRINKS 222K14
MISS BRINKS UPPERCUT 30L18
MBR MR BB 44M2
MISS 4L PATHFINDER 9U8M
KO OF BRINKS 392F10
MISS BRINKS MILKY WAY 541E4
CADENCE OF BRINKS
MISS BB NEW MACHO 468C

BW	WW	YW	REA	FT	IMF										
76 (96%)	658 (107%)	928 (104%)	12.19 (109%)	0.28 (98%)	4.61 (106%)										
CED	BW	WW	YW	M	TM	CEM	SC	REA	IMF	FT	Hfr Prq	Stay	Cow Wt	TI	FI
5	-0.1	28	51	11	26	6.06	0.89	0.52	0.12	-0.004	10.12	3.31	14.37	2.77	2.67

Ms DMR Guardian has EPDs to help the numbers of almost any AI sire. She has 15 EPD traits in the breeds top 40% or better, including top 4% REA and Heifer Preg., 10% SC, 15% FT, 20% IMF and TM and top 25% CED, WW, YW, and Milk. Her personal performance was also top-notch, 928 pound YW (104 ratio) 12.19 REA (109 ratio) 4.61 IMF (106 ratio). 468C7 has been an outstanding donor cow for us. Out of nine conventional flushes, she has produced an average of 13 viable embryos. Trans Ova has asperated her for us a few times for an average of 15 viable IVF embryos. At Addison Brangus Farms we think a lot of 468C7. We have her offspring in our herd and her embryos in our tank so that we can continue to take advantage of the genetics that this great donor has to offer. We have sold her offspring and embryos in our past sales and we were very pleased with the results. We are also pleased that our customers have the confidence in her genetics, to take home and advance their cattle programs. In last year's sale, Jacob Cocke of CJC Farm and Jamey Reynolds of Sunshine Acres Brangus teamed up to purchase one of her best heifers raised by Addison Brangus, ABF Ms Three D 468H5 for \$10,000. If you are interested in a good donor cow, you should consider 468C7. Safe in calf.

Breeding: AI'd to DMR Empire 795D12, R10323531 on 6/9/22. Pasture exposed to ABF Black Rock 27H5, R10458503 from 6/19/22 to 7/31/22. Safe to AI date.



ABF Customer Testimonial

"I bought my first Brangus bull in 1996 to use on Simmental and Simmental cross cows. I kept heifers to build my herd and continued to use Brangus bulls from several different breeders. In August 2018, I decided to visit Addison Brangus after seeing their ads in the Cattleman's magazine. Wayne was great to work with and took time to show me his cattle. I liked that all of his cattle were gentle. I bought two commercial bulls and Wayne and his wife delivered them the same day. After four years, I am still impressed with their gentleness. I use the bulls with first calf heifers and young cows. I have not had to pull a single calf. The bulls have also greatly improved the genetics of my herd."

Steve Holt, Iron City, Tennessee

121 PLB MS GAME CHANGER 40E

Born: 2/20/17 R10342095 Gen: 5 PHN: 40E Spring Bred Cow 2 Oaks Brangus

MC GAME CHANGER 127Y42
R10210153

MS. 101 ALYDAR 40Y
R10210159

MC SOMETHING SPECIAL 129W14

MC MS LUCIA 127W

SUHN'S ALYDAR 416N3

MS BRINKS LARGENT 40U8

MC JETHRO 00S3

MC MS LEAD GUN 129T12

LUKE OF BRINKS 784P14

MC MS EASY MONEY 127K11

ALI OF BRINKS 209J2

MISS CC NEWS DAY 416E

LARGENT OF BRINKS 784R17

MS BRINKS SONAR 40S21

BW	WW	YW	REA	FT	IMF										
72 (96%)	648 (97%)														
CED	BW	WW	YW	M	TM	CEM	SC	REA	IMF	FT	Hfr Prg	Stay	CowWt	TI	FI
1.3	1.9	31	67	8	24	5.47	1.19	0.2	0.29	0.012	3.94	1.45	-7.5	3.38	1.42

Great combination in power and calving ease genetics. Her dam Ms. 101 Alydar 40Y has been one of our best producing females every year. Nice young female in the prime of her life.

Breeding: Pasture exposed to Clearwater Innovation 6410, AAA#19050762 from 5/10/22 to sale day.

122 GBF MISS GRANITE 23F

Born: 2/19/18 R10380526 Gen: 1 PHN: 23F Spring Bred Cow Galloway Brangus Farm

MC GRANITE 834B
UB10275960

MS SALACOA WARRIOR 23Y91
R10202569

MC BOULDER 889Z14

MC MS 778 TRAVELER 834Z

TCB CATAWBA WARRIOR R532

SVF LEAD GUN 23 U151

MC SOMETHING SPECIAL 129W14

MC MS EXTRAVAGANT 889X4

M C 004 TRAVELER 77 8T10

MC MS TARGET 834L

SR CADENCE WARRIOR H823

SR WARRIOR PRINCESS N332

LEAD GUN OF BRINKS 222K14

SVF MS 23K15

BW	WW	YW	REA	FT	IMF										
77 (91%)	612 (113%)	834 (105%)	10.34 (108%)	0.27 (96%)	3.31 (103%)										
CED	BW	WW	YW	M	TM	CEM	SC	REA	IMF	FT	Hfr Prg	Stay	CowWt	TI	FI
5	-0.9	43	77	13	35	1.71	0.69	0.61	0.15	0.019	3.68	2.17	-8.65	4.09	2.29

She has a set of EPDs that is hard to top with 13 EPDs and Index in the top 35%. Led by top 2% REA, 4% YW and Term Index and top 5% WW while having top 10% Fertility Index, 15% BW and top 25% CED.

Breeding: AI'd to BWCC Final Time 313H2, R10451991 on 5/24/22. Pasture exposed to BWCC Cross Fit 192E64, R10383125 from 5/28/22 to 7/21/22.

123 H+ IROQUOIS LADY D001

Born: 8/30/16 R10336071 Gen: 6 PHN: D001 Spring Bred Cow Pine Knot Cattle Co.

H+ IROQUOIS WARRIOR A313
R10252687

H+ MOHICAN BLACK BIRD Z218
R10229299

BRANGUS
GE-EPDS

SR WRANGLER WARRIOR T113

H+ MS CADENCE 237 Y084

TCB CATAWBA WARRIOR R532

DX TWO RIVERS VERNA 452S3

ACES TF WRANGLER 145/8

SR CHEROKEE PRINCESS J923

SVF MR CADENCE 23S86

SVF CADENCE 237 W084

SR CADENCE WARRIOR H823

SR WARRIOR PRINCESS N332

CCR INTEGRITY 589K4

CCR TWO RIVERS VERNA 452J

BW	WW	YW	REA	FT	IMF										
66 (100%)	497 (100%)	844 (100%)	10.44 (100%)	0.21 (100%)	2.62 (100%)										
CED	BW	WW	YW	M	TM	CEM	SC	REA	IMF	FT	Hfr Prg	Stay	CowWt	TI	FI
5.9	-0.7	13	39	14	21	2.34	0.28	0.16	-0.1	0.001	1.99	0.64	0.18	1.53	0.35

She is a calving ease specialist. Led by a Top 15% BW and MILK and 20% CED she should help the front side EPDs of about any bull you put on her. She is bred to our Beacon son herd sire with EPDs of 10% for YW and Heif Preg, 15% CED and WW. He has produced some excellent calves for us in the past so we feel this mating is a sure bet.

Breeding: Pasture exposed to ELC Mr Beacon 96F5, R10392422 from 2/1/22 to 8/10/22. Safe.

124 OAKS MS CSONKA 40B52

Born: 9/9/14 R10277882 Gen: 5 PHN: 40B52 Spring Bred Cow J-1 Brangus

CSONKA OF BRINKS 30R4
R10004209

SF MISS NEXT STEP 40U5
R10139781

BRANGUS
GE-EPDS

LEAD GUN OF BRINKS 222K14

MISS BRINKS UPPERCUT 30L18

SUHN'S NEXT STEP 331R7

SUHN'S NEXT STEP 331R7

CADENCE OF BRINKS

MISS BB NEW BIG EASY 222E55

UPPERCUT OF BRINKS 14J8

MISS BRINKS SUNDANCE 30J32

BURTIN'S TRANSFORMER 803G3

SUHN'S MS CADENCE 331M3

BURTIN'S TRANSFORMER 803G3

SUHN'S MS CADENCE 331M3

BW	WW	YW	REA	FT	IMF										
68 (90%)	489 (95%)	796 (94%)	10.17 (96%)	0.3 (91%)	4 (91%)										
CED	BW	WW	YW	M	TM	CEM	SC	REA	IMF	FT	Hfr Prg	Stay	CowWt	TI	FI
3	1.7	20	46	9	19	2.1	1.24	0.19	-0.06	-0.007	7.52	1.84	4.26	1.68	1.52

Here is a direct daughter of the great Csonka bull. She carries nine traits in the top 50% or better. Those are led by a top 4% in Heifer Pregnancy and top 10% in both FT and SC. She sells safe to the great Big Town bull with a heifer calf.

Breeding: AI'd to BWCC Big Town 192B16, R10266676 on 5/18/22. Pasture exposed to DMR Magnificent 535H24, R10478588 from 5/21/22 to 8/13/22.



H+ Iroquois Lady D001



Csonka of Brinks 30R4 • Sire of Lot 124

125 CLVR MS NEW VISION 23D12

Born: 10/7/16 R10352773 Gen: 7 PHN: 23D12 Spring Bred Cow Las Palomas Ranch

NEW VISION OF SALACOA 209Y2
R10204856

LAMBERT OF BRINKS 317R3
MS BRINKS BRIGHT SIDE 209L11

LEAD GUN OF BRINKS 222K14
MS BRINKS GOOD FORTUNE 317M
BRIGHT SIDE OF BRINKS 789G5
MISS BRINKS NEWSDAY 209G9
LEAD GUN OF BRINKS 222K14
MISS BRINKS UPPERCUT 30L18
FLC MR DUKE 184/U
SALACOA PINE LASS 23D2

CLVR MISS MOO MOO 23Y9
R10221301

BRANGUS
GE-EPDS

CSONKA OF BRINKS 30R4
SVF. MS. 23K19

BW	WW	YW	REA	FT	IMF										
72 (95%)	512 (100%)	898 (100%)	11.54 (100%)	0.29 (100%)	3.84 (100%)										
CED	BW	WW	YW	M	TM	CEM	SC	REA	IMF	FT	Hfr Prq	Stay	Cow Wt	TI	FI
-1	2.7	29	53	1	15	1.46	0.79	0.41	0	-0.007	6.68	0.95	-19.53	2.08	1.24

A proven cow that just weaned a Domain bull calf. We were pleased with the outcome so we breed her back the same way. This New Vision daughter ranks in the top 2% of the breed for Cow Wt EPD and in the top 15% for FT and Heifer Preg.

Breeding: Pasture exposed to DMR Domain 415G35, R10422132 from 4/4/22 to 7/1/22.



New Vision of Salacoa 209Y2 • Sire of Lot 125

126 GBF MS HERITAGE 415C5 27F

Born: 4/18/18 R10380537 Gen: 7 PHN: 27F Spring Bred Cow Galloway Brangus Farm

T3 HERITAGE 415C5
R10320473

DMR HERITAGE 894Y
MS DMR CSONKA 415Z9

SUHN'S NEXT STEP 331R7
MS DMR AFFIRMED 894W
CSONKA OF BRINKS 30R4
MS BRINKS BRIGHT SIDE 415R23
PATTON OF BRINKS 30T22
SVF MS 23M28
TRACKER OF BRINKS 541M8
DS MS CAROLINE 27Y

DS MS EISENHOWER 27D
R10322317

EISENHOWER OF SALACOA 23Y69
DS MS HOLLY 27A2

BW	WW	YW	REA	FT	IMF										
89 (106%)	572 (105%)	842 (100%)	11.26 (100%)	0.15 (100%)	5.08 (100%)										
CED	BW	WW	YW	M	TM	CEM	SC	REA	IMF	FT	Hfr Prq	Stay	Cow Wt	TI	FI
-2.6	3.6	33	65	5	22	2.94	0.72	0.44	0.15	0.004	3.96	0.27	-10.85	2.94	0.04

27F has growth and carcass over the top with ultrasound REA of 1.39/cwt and adj IMF of 5.08. These measurement provide EPDs top 15% YW and REA, 20% WW and Term Index, top 30% IMF and SC. All with a Cow Weight EPD in the top 10%.

Breeding: Pasture exposed to BWCC Cross Fit 192E64, R10383125 from 5/5/22 to 7/21/22. Safe in calf.

129 B2K MS FOUNDATION 541H41

Born: 3/14/20 R10453670 Gen: 6 PHN: 541H41 Fall Bred Heifer B2K Farm

SUHN'S FOUNDATION 331Z28
R10227112

GR SWIFT 209W3

SUHN'S MISS BT 331S43

ATLANTA OF SALACOA 488Z

OAKS MS CSONKA 541T7

OAKS MS ATLANTA 541C54
R10287162

LAMBERT OF BRINKS 317R3
MS BRINKS BRIGHT SIDE 209L11
BURTIN'S TRANSFORMER 803G3
SUHN'S MS CADENCE 331M3
LAMBERT OF BRINKS 317R3
MS SVF CADENCE 488X11
CSONKA OF BRINKS 30R4
MS BRINKS GD FORTUNE 541P103

BW	WW	YW	REA	FT	IMF										
80 (100%)	698 (100%)														
CED	BW	WW	YW	M	TM	CEM	SC	REA	IMF	FT	Hfr Prq	Stay	Cow Wt	TI	FI
1.7	1.9	39	67	7	27	4.05	0.91	0.45	0.02	0.005	5.85	0.6	-1.98	2.93	-0.04

A powerful femal out of our selection the The Oaks dispersal sale. Oaks Ms Atlanta 541C54 continues to produce great progeny for us. This female was sired by a flush to the Suhn's Foundation bull. She has seven EPD traits in the top 20%. She is confirmed bred to our herd sire 541G38, a Big Town son.

Breeding: Pasture exposed to MC Big Town 541G38, UB10449612 from 1/1/21 to 6/30/21. Safe.

132 MS SALACOA BROADWAY 541H43

Born: 10/22/20 R10460582 Gen: 4 PHN: 541H43 Fall Bred Heifer ACE

T3 BROADWAY 30E
R10367402

HOLLYWOOD OF SALACOA 23A53
MS SALACOA ATLANTA 30B5

NEW VISION OF SALACOA 209Y2
MS SVF PATTON 23Y66
ATLANTA OF SALACOA 488Z
MS BRINKS UNITAS 30T94
MC SOMETHING SPECIAL 129W14
MC MS EXTRAVAGANT 889X4
PATTON OF BRINKS 30T22
MS BRINKS TRANSFORMER 541M40

MS SALACOA BOULDER 541D5
R10330431

BRANGUS
GE-EPDS

MC BOULDER 889Z14
MS SALACOA PATTON 541Z4

BW	WW	YW	REA	FT	IMF										
82 (100%)	397 (100%)	769 (100%)	10.25 (100%)	0.23 (100%)	4.89 (100%)										
CED	BW	WW	YW	M	TM	CEM	SC	REA	IMF	FT	Hfr Prq	Stay	Cow Wt	TI	FI
7.9	-1.5	31	60	2	18	2.34	0.82	0.33	0.16	0.01	8.07	1.79	-10.69	3.12	1.47

541H43 is a tremendous first calf heifer. She is out of the \$20,000 pick of the herd, 541D5, currently owned by Las Palomas Ranch. She is sired by the \$65,000 T3 Broadway 30E. She scanned a huge REA/CWT of 1.4". She ranks in 11 EPDs and indexes in the top 35%. She was AI'd to the \$100,000 BWCC Final Time 313H2 and cleaned up with a Big Town son.

Breeding: AI'd to BWCC Final Time 313H2, R10451991 on 12/9/22. Pasture exposed to Salacoa Big Town 535F9, R10382058 from 12/17/21 to 3/17/22.



Ms Salacoa Broadway 541H43



Ms Salacoa Broadway 541H46

133 MS SALACOA BROADWAY 541H46

Born: 9/15/20 R10460578 Gen: 4 PHN: 541H46 Fall Bred Heifer ACE

T3 BROADWAY 30E
R10367402

MS SALACOA BOULDER 541D8
R10330436

BRANGUS
GE-EPDs

HOLLYWOOD OF SALACOA 23A53

MS SALACOA ATLANTA 30B5

MC BOULDER 889Z14

MS SALACOA PATTON 541Z4

NEW VISION OF SALACOA 209Y2

MS SVF PATTON 23Y66

ATLANTA OF SALACOA 488Z

MS BRINKS UNITAS 30T94

MC SOMETHING SPECIAL 129W14

MC MS EXTRAVAGANT 889X4

PATTON OF BRINKS 30T22

MS BRINKS TRANSFORMER 541M40

BW	WW	YW	REA	FT	IMF										
77 (100%)	614 (100%)	1002 (100%)	12.01 (100%)	0.29 (100%)	5.39 (100%)										
CED	BW	WW	YW	M	TM	CEM	SC	REA	IMF	FT	Hfr Prg	Stay	CowWt	TI	FI
5.8	-0.1	36	68	3	21	2.15	0.79	0.73	0.32	0.019	7.65	1.57	-7.58	3.95	0.91

541H46 comes from the heart of our first calf heifer pen. She is an own daughter of the \$65,000 T3 Broadway 30E and out of the donor dam Ms Salacoa Boulder 541D8 who is out of the \$20,000 541Z4 donor that is owned by Villa Ranch. Like her sister she ranks in the top 35% for 11 EPDs and indexes including top 10% IMF and Term, top 15% WW, REA, Cow Wt, and Fert. She was AI'd to the \$100,000 BWCC Final Time 313H2 and cleaned up with a Big Town son.

Breeding: AI'd to BWCC Final Time 313H2, R10451991 on 12/9/22. Pasture exposed to Salacoa Big Town 535F9, R10382058 from 12/17/21 to 3/17/22.



ELC Ms TTT LM Signal 535H2

135 ELC MS TTT LM SIGNAL 535H2

Born: 11/16/20 R10455341 Gen: 6 PHN: 535H2 Fall Bred Heifer EC Brangus, LLC

SUHN'S TTT LM SIGNAL 30E13
UB10353471

ELC MS THREE D 535F4
R10392423

TJM THREE D 302A

SCC MISS MYTTY 30Z5

TJM THREE D 302A

ELC MS PASSPORT 535D24

CB FINAL CUT 924X

OAKS MS PATTON 302X3

MYTTY IN FOCUS

SUHN'S MS DUKE 30M

CB FINAL CUT 924X

OAKS MS PATTON 302X3

CB PASSPORT 803Y11

CLVR MISS COCO 535W2

BW	WW	YW	REA	FT	IMF										
74 (105%)	582 (98%)	936 (100%)	9.72 (100%)	0.23 (100%)	3.65 (100%)										
CED	BW	WW	YW	M	TM	CEM	SC	REA	IMF	FT	Hfr Prg	Stay	CowWt	TI	FI
6.7	-0.5	40	67	2	23	2.87	0.95	0.25	-0.03	0.011	8.32	1.38	7.32	2.81	0.11

A Signal daughter and out of an outstanding Three D dam. Tremendous opportunity. Top 10% of breed on WW, YW, CEM and SC. Top 30% on YW and REA. She has always stood out in the pasture. Gentle with great disposition. Will calve around her 2 year birthday.

Breeding: AI'd to DMR Cash Flow 535F30, UB10386538 on 2/17/22. Safe to AI date.



ELC Ms Beacon 535H10

136 ELC MS BEACON 535H10

Born: 12/31/20 R10465495 Gen: 2 PHN: 535H10 Fall Bred Heifer EC Brangus, LLC

ELC MR BEACON 96F5
R10392422

ELC MS PASSPORT 535D24
R10329914

SUHN'S MAJESTIK BEACON 30C

ELC MS HOMBRE 96A4

CB PASSPORT 803Y11

CLVR MISS COCO 535W2

TJM THREE D 302A

SCC MISS MYTTY 30Z5

CB HOMBRE 541T3

MS SVF 23S86 96Y4

CB HOMBRE 541T3

MS BRINKS LAMBERT 803T6

SVF MR 4457

SVF MS 171P4 535S60

BW	WW	YW	REA	FT	IMF										
69 (98%)	567 (102%)	864 (100%)	9.36 (100%)	0.22 (100%)	3.75 (100%)										
CED	BW	WW	YW	M	TM	CEM	SC	REA	IMF	FT	Hfr Prg	Stay	CowWt	TI	FI
5.5	0.4	29	57	5	20	3.51	0.83	0.12	0.09	0.003	6.37	1.35	0.14	2.55	0.76

Outstanding bred heifer that is safe to MC Nuff Said, who have sired some of the most productive animals in the breed. Gentle with great disposition. Top 20% of breed on YW and SC. Top 25% on WW. She will calve about a month before her 2 year birthday.

Breeding: AI'd to MC Nuff Said 889T50, R10096341 on 2/17/22. Safe to AI date

137 LP MS CROSSROADS 201J

Born: 2/16/21 R10471549 Gen: 6 PHN: 201J Fall Bred Heifer Las Palomas Ranch

DMR CROSSROADS 795F7
R10416850

BWCC CROSS FIT 541B28

MS DMR CORONADO 795C5

NEW VISION OF SALACOA 209Y2

MS BRINKS LEAD GUN 201S9

MC CROSSOVER 834Y

MC MS LUCIA 541U

TJM CORONADO 535X

MS DMR JETHRO 795Y2

LAMBERT OF BRINKS 317R3

MS BRINKS BRIGHT SIDE 209L11

LEAD GUN OF BRINKS 222K14

MISS BRINKS TYPESETTER 201L6

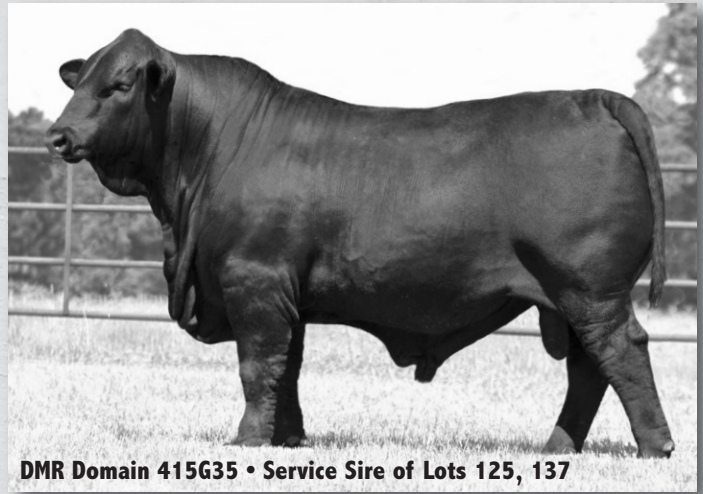
CLVR MS NEW VISION 201G6
R10417713

BRANGUS
GE-EPDS

BW	WW	YW	REA	FT	IMF										
90 (110%)	454 (89%)														
CED	BW	WW	YW	M	TM	CEM	SC	REA	IMF	FT	Hfr Prg	Stay	CowWt	TI	FI
-2.8	4.1	35	71	3	21	3.03	0.99	0.5	0.11	-0.001	2.46	0.46	-12.3	3.12	0.6

This exciting young Crossroads daughter has been exposed to DMR Domain. She boasts four EPD traits in the 10% of the breed including YW, SC, REA, and Cow Wt and top 15% for WW and Term Index.

Breeding: Pasture exposed to DMR Domain 415G35, R10422132 from 8/1/22 to sale day.



DMR Domain 415G35 • Service Sire of Lots 125, 137

138 QCC MS EL DORADO

Born: 3/5/20 R10453247 Gen: 2 PHN: 535H Fall Bred Heifer Quinn Cattle Co.

DMR ELDORADO 30B15
R10284830

TJM CORONADO 535X

SUHN'S MISS PATTON 30X6

SUHN'S MAJESTIK BEACON 30C

4M MISS GERONIMO'S LEAD

CB HOMBRE 541T3

MS BRINKS LAMBERT 535T4

PATTON OF BRINKS 30T22

SUHN'S MS DUKE 30M

TJM THREE D 302A

SCC MISS MYTTY 30Z5

MB LEAD GUN 36W

WOW MS GERONIMO 535U

KCF MS BEACON
R10375893

BW	WW	YW	REA	FT	IMF										
85 (111%)	630 (95%)														
CED	BW	WW	YW	M	TM	CEM	SC	REA	IMF	FT	Hfr Prg	Stay	CowWt	TI	FI
7.3	-0.1	33	58	-1	15	3.18	0.8	0.28	0.12	0.002	6.01	1.29	-0.37	2.77	0.6

From calving ease breed leader Eldorado 30B15 comes a daughter that is functional as she is fancy. QCC Ms El Dorado's dam was sired by Suhn's Majestik Beacon 30C. This cross of calving ease, femininity and power has produced an easy fleshing, moderately framed, robust female. Boasting seven traits in the top 35% of the breed; top 10% CED and top 20% WW and YW. AI bred to HRF Senator 30E80, a maternal brother to Beacon 30C, tying this calf back to the elite genetics that makes the 30 family so iconic.

Breeding: AI'd to Suhn's HRF Senator 30E80, UB10367585 on 1/12/22. Pasture exposed to TTT Brickhouse 468F, R10376032 from 2/1/22 to 2/28/22. ECD: 10/22/22. Safe to AI date.



QCC Ms El Dorado

139 HF MS MONUMENT 10J1

Born: 1/26/21 UB10508265 Gen: 3 PHN: 10J1 Spring Bred Heifer Haynes Farms

BWCC MONUMENT 10D7
UB10336225

MC BOULDER 889Z14

BWCC MS RESOURCE 10A10

MC PROFIT 924B16

BWCC MS RESOURCE 10A16

MC SOMETHING SPECIAL 129W14

MC MS EXTRAVAGANT 889X4

S A V RESOURCE 1441

BWCC MS NUFF SAID 10X

MC CROSSOVER 834Y

RBM MS JETHRO 924U2

S A V RESOURCE 1441

BWCC MS NUFF SAID 10X

HF MS PROFIT 10G
UB10423098

BW	WW	YW	REA	FT	IMF										
76 (104%)	654 (99%)	849 (100%)													
CED	BW	WW	YW	M	TM	CEM	SC	REA	IMF	FT	Hfr Prg	Stay	CowWt	TI	FI
4.9	0.1	40	58	7	27	1.1	1.45	0.48	0.42	0.039	7.23	2.28	-5.32		

HF Ms Monument 10J1 goes back to the great 10X owned by Alan Varner who produced many greats in the 10-cow family at Blackwater.

Breeding: AI'd to BWCC Big Town 192B16, R10266676 on 4/3/22. Safe.



HF Ms Monument 10J1



HF Ms Resource 487J1

140 HF MS RESOURCE 487J1

Born: 2/2/21 UB10508267 Gen: 1 PHN: 487J1 Spring Bred Heifer Haynes Farms

BWCC RESOURCE 535C
UB10316286

S A V RESOURCE 1441

HF MISS LEAD GUN 535U

MC BOUNCER 1420Z4

BWCC MS NUFF SAID 487Y9

HF MS BOUNCER 487B8
R10282270

RITO 707 OF IDEAL 3407 7075
S A V BLACKCAP MAY 4136
BRINKS LEAD GUN 415P44
SVF MS 535M9
MC ELEGIDO 924W6
MC MS STRYKER 1420U6
MC NUFF SAID 889T50
MISS 4C LEAD GUN 487P

BW	WW	YW	REA	FT	IMF										
70 (96%)	671 (102%)	860 (102%)													
CED	BW	WW	YW	M	TM	CEM	SC	REA	IMF	FT	Hfr Prg	Stay	CowWt	TI	FI
0.8	2	37	69	13	31	2.5	0.72	0.65	0.26	0.028	6.24	2.61	3.46		

This heifer goes back to 487Y9 who has produced donors. Her dam has produced my best calf each year for several years now.

Breeding: AI'd to BWCC Mile Marker 889E32, R10359796 on 4/3/22. Safe.



HF Ms Granite 487J3

141 HF MS GRANITE 487J3

Born: 1/19/21 UB10508274 Gen: 2 PHN: 487J3 Spring Bred Heifer Haynes Farms

MC GRANITE 834B
UB10275960

MC BOULDER 889Z14

MC MS 778 TRAVELER 834Z

BWCC RESOURCE 535C

HF MS BOUNCER 487B8

HF MS RESOURCE 487F4
UB10394003

MC SOMETHING SPECIAL 129W14
MC MS EXTRAVAGANT 889X4
M C 004 TRAVELER 77 8T10
MC MS TARGET 834L
S A V RESOURCE 1441
HF MISS LEAD GUN 535U
MC BOUNCER 1420Z4
BWCC MS NUFF SAID 487Y9

BW	WW	YW	REA	FT	IMF										
77 (105%)	666 (101%)	830 (98%)													
CED	BW	WW	YW	M	TM	CEM	SC	REA	IMF	FT	Hfr Prg	Stay	CowWt	TI	FI
2.2	1.1	40	76	9	29	2	0.47	0.56	0.23	0.035	5.27	2.52	-0.57		

Wow just look at her pedigree and her EPDs. Also look at this heifer. She could be the best I'm offering this year.

Breeding: AI'd to BWCC Big Town 192B16, R10266676 on 4/3/22. Safe.



HF Ms Resource 889J

142 HF MS RESOURCE 889J

Born: 2/20/21 UB10508269 Gen: 1 PHN: 889J Spring Bred Heifer Haynes Farms

BWCC RESOURCE 535C
UB10316286

S A V RESOURCE 1441

HF MISS LEAD GUN 535U

MC BODINE 129W15

BWCC MS REDEMPTION 889Z2

HF MS BODINE 889C
R10316287

RITO 707 OF IDEAL 3407 7075
S A V BLACKCAP MAY 4136
BRINKS LEAD GUN 415P44
SVF MS 535M9
MC JETHRO 00S3
MC MS 004 TRAVELER 129T9
MC REDEMPTION 192W22
MC MS EXTRAVAGANT 889P4

BW	WW	YW	REA	FT	IMF										
70 (96%)	687 (104%)	846 (100%)													
CED	BW	WW	YW	M	TM	CEM	SC	REA	IMF	FT	Hfr Prg	Stay	CowWt	TI	FI
2.2	1.7	40	69	10	30	2.6	0.86	0.54	0.22	0.021	6.34	2.5	0.47		

HF Ms Resource 889J goes back to the famous 889P4 cow at Blackwater. Nice heifer here.

Breeding: AI'd to BWCC Big Town 192B16, R10266676 on 4/3/22. Safe.

143 ABF MS CASH FLOW 10J

Born: 2/8/21 UB10475146 Gen: 2 PHN: 10J Spring Bred Heifer Addison Brangus Farms

DMR CASH FLOW 535F30
UB10386538

S A V RESOURCE 1441
MS DMR CORONADO 535A8

RITO 707 OF IDEAL 3407 7075
S A V BLACKCAP MAY 4136
TJM CORONADO 535X
SVF MS 535M31
MC CROSSOVER 834Y
MC MS LUCIA 541U
S A V RESOURCE 1441
BWCC MS NUFF SAID 10X

MC SHE'S FIT 10G14
UB10426016

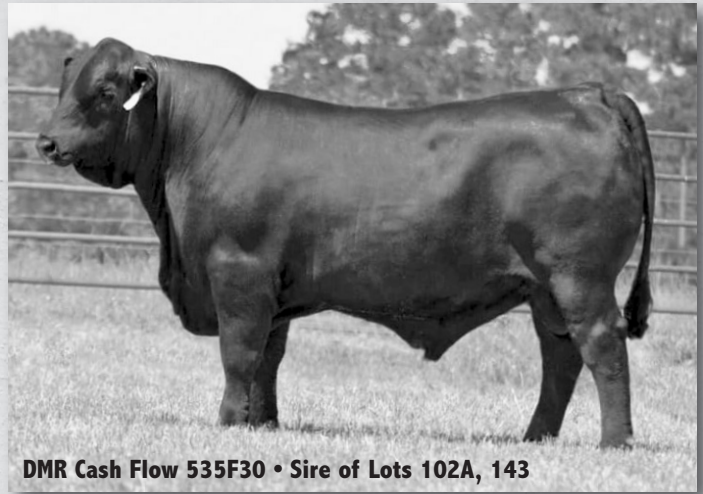
BWCC CROSS FIT 541B28
BWCC MS RESOURCE 10A2

BRANGUS
GE-EPDS

BW	WW	YW	REA	FT	IMF										
63 (88%)	567 (95%)	802 (86%)	9.93 (96%)	0.67 (150%)	4.8 (103%)										
CED	BW	WW	YW	M	TM	CEM	SC	REA	IMF	FT	Hfr Prg	Stay	CowWt	TI	FI
3.6	0.9	44	75	4	27	1.38	1.06	0.61	0.42	0.031	6.91	1.85	-1.98	4.32	0.92

This Cash Flow daughter has lots of eye appeal. She is a moderate framed female with 10 EPD traits in the breeds top 20% or better, including top 1% Term Index, 3% WW, 4% YW and REA, and 5% Heifer Preg. Her Cross Fit dam is doing us a great job in our herd and I think 10J will work good for you. She is safe in calf.

Breeding: AI'd to DMR Empire 795D12, R10323531 on 5/7/22. Pasture exposed to ABF Black Bullet 468J, R10475158 from 5/21/22 to 7/31/22. Safe to AI date.



DMR Cash Flow 535F30 • Sire of Lots 102A, 143

144 ABF MS RESOURCE 27J

Born: 3/21/21 UB10475156 Gen: 1 PHN: 27J Spring Bred Heifer Addison Brangus Farms

S A V RESOURCE 1441
EA17016597

RITO 707 OF IDEAL 3407 7075
S A V BLACKCAP MAY 4136

R R RITO 707
IDEAL 3407 OF 1418 076
S A V 8180 TRAVELER 004
S A V MAY 2397
CCR SLEEP EASY 150R
PF MS LUCY 1000P
CCR SLEEP EASY 278P2
WHIS BQ

ABF MS SLEEP EASY 27A2
R10238884

CCR SLEEP EASY 1000U3
ABF MS INVESTMENT

BRANGUS
GE-EPDS

BW	WW	YW	REA	FT	IMF										
83 (116%)	693 (117%)	1075 (116%)	11.67 (113%)	0.34 (76%)	3.88 (84%)										
CED	BW	WW	YW	M	TM	CEM	SC	REA	IMF	FT	Hfr Prg	Stay	CowWt	TI	FI
-4.3	3.4	52	92	14	40	-0.24	1.03	0.62	0.28	0.02	4.42	1.67	-0.22	4.67	1.27

Ms Resource is a long-bodied, thick and deep-made female with lots of growth. She had a 693 pound WW (117 ratio), 1075 pound YW (116 ratio) and 11.67 REA (113 ratio). 27J should produce some outstanding herd bulls in her lifetime. Along with her above-average growth, she is backed by EPDs. 27J has 11 EPD traits in the breeds top 35% or better, including top 1% WW, YW, TM and Term Index, top 4% REA and top 15% Milk, IMF and Stay. Her Milk EPD, along with her other outstanding EPDs, will help the numbers and growth of a lot of the AI sires that we all use in our programs. *OHF*

Breeding: AI'd to DMR Empire 795D12, R0323531 on 5/7/22. Pasture exposed to ABF Black Bullet 468J, R10475158 from 5/21/22 to 7/31/22. Safe.



ABF Ms Resource 27J





ABF Ms Raindance 568J

145 ABF MS RAINDANCE 568J

Born: 3/21/21 UB10475159 Gen: 1 PHN: 568J Spring Bred Heifer Addison Brangus Farms

S A V RAINDANCE 6848
EA18578965

COLEMAN CHARLO 0256

S A V BLACKCAP MAY 4136

O C C PAXTON 730P
BOHI ABIGALE 6014
S A V 8180 TRAVELER 004
S A V MAY 2397

ABF MS GUARDIAN 568C
R10289013

CRC GUARDIAN 9U8U5

MB MS CRUSADER 568Z3

CSONKA OF BRINKS 30R4
MISS 4L BEST BET 9U8P5
MB CRUSADER 17W9
MB MS ANCHOR 568W

BRANGUS
GE-EPDS

BW	WW	YW	REA	FT	IMF										
71 (99%)	642 (108%)	966 (104%)	10.57 (102%)	0.43 (96%)	4.9 (106%)										
CED	BW	WW	YW	M	TM	CEM	SC	REA	IMF	FT	Hfr Prg	Stay	Cow Wt	TI	FI
3.7	2	55	90	5	32	0	0.97	0.45	0.41	0.03	5.71	1.87	5.53	4.78	0.71

This Raindance daughter's dam is in the top tier of our herd. Her dam has an outstanding calving interval and raises one of our top calves each year, as should 568J. Ms Raindance is a deep bodied, thick made female with lots of eye appeal. She has nine EPD traits in the breeds top 35% or better, including top 1% WW and YW, 10% IMF and TM and 15% SC, REA and Stay. With a 71 pound birth weight, she was one of our top performing females. 642# WW (108 ratio), 966# YW (104 ratio), 10.57 REA (102 ratio), and 4.90 IMF (106 ratio).

Breeding: AI'd to DMR Empire 795D12, R10323531 on 5/7/22. Pasture exposed to ABF Black Bullet 468J, R10475158 from 5/21/22 to 7/31/22. Safe to AI date.



ABF Ms Monument 75J

146 ABF MS MONUMENT 75J

Born: 2/3/21 R10475164 Gen: 1 PHN: 75J Spring Bred Heifer Addison Brangus Farms

BWCC MONUMENT 10D7
UB10336225

MC BOULDER 889Z14

BWCC MS RESOURCE 10A10

MC SOMETHING SPECIAL 129W14
MC MS EXTRAVAGANT 889X4

ABF MS ELDORADO 75G
R10410845

DMR ELDORADO 30B15

SF MISS THREE D 75D12

S A V RESOURCE 1441
BWCC MS NUFF SAID 10X
TJM CORONADO 535X
SUHN'S MISS PATTON 30X6
TJM THREE D 302A
SF MISS LAMBERT 75Y3

BRANGUS
GE-EPDS

BW	WW	YW	REA	FT	IMF										
70 (97%)	683 (115%)	925 (100%)	10.67 (103%)	0.54 (121%)	5.99 (129%)										
CED	BW	WW	YW	M	TM	CEM	SC	REA	IMF	FT	Hfr Prg	Stay	Cow Wt	TI	FI
4.3	0.5	52	79	5	31	2.17	1.32	0.54	0.5	0.031	6.67	1.74	-5.29	4.73	1.01

Ms Monument is a slick, thick made female with a great look and great disposition. 75J has 12 EPD traits in the breeds top 40% or better, including top 1% WW, 2% YW and SC, 3% IMF and 4% TM. This well numbered female also has performance to back up those EPDs. Starting out at 64 pounds at birth, she had a 683 pound WW (115 ratio). Her scan was also top notch. 10.67 REA (103 ratio), and look at her IMF! 5.99 IMF (129 ratio). With Monument one the top side of her pedigree and Eldorado on the bottom side, this heifer should work well in any herd.

Breeding: AI'd to DMR Empire 795D12, R10323531 on 5/7/22. Pasture exposed to ABF Black Bullet 468J, R10475158 from 5/21/22 to 7/31/22. Safe to AI date.



JRT Ms Three D 468J3

147 JRT MS THREE D 468J3

Born: 2/12/21 R10482878 Gen: 5 PHN: 468J3 Spring Bred Heifer JRT Brangus

TJM THREE D 302A
R10244716

CB FINAL CUT 924X

OAKS MS PATTON 302X3

MC REVELATION 129T
RBM MS GUNS 924T3
PATTON OF BRINKS 30T22
MISS BRINKS GERONIMO 302H6
CSONKA OF BRINKS 30R4
MISS 4L BEST BET 9U8P5
NEW ERA OF BRINKS 541J37
MISS BRINKS CADENCE 468G15

MS DMR GUARDIAN 468C7
R10296914

CRC GUARDIAN 9U8U5

MS BRINKS NEW ERA 468P14

BRANGUS
GE-EPDS

BW	WW	YW	REA	FT	IMF										
74 (100%)	619 (100%)	871 (100%)	11.8 (100%)	0.29 (100%)	2.64 (100%)										
CED	BW	WW	YW	M	TM	CEM	SC	REA	IMF	FT	Hfr Prg	Stay	Cow Wt	TI	FI
4.4	0.2	36	60	5	23	4.51	0.73	0.43	-0.06	-0.013	10.59	2.25	14.17	2.57	1.26

JRT Ms Three D 468J3 is a donor prospect out of the great donor Ms DMR Guardian 468C7 owned by Addison Brangus Farms and the great 3D bull. She is a full sister to ABF Ms Three D 468H5 who sold for \$10,250 to Sunshine Acres and CJC Farms in last year's sale. She records 12 EPDs in the top 35% led by top 1% Heifer Preg, 10% Stay, 15% WW, REA and top 20% YW and Fertility Index. She is deep-bodied, big ribbed, thick-ended, with a 5 star disposition! She's got the pedigree and looks to take your program to another level. We AI'd her to Cash Flow and that combination is a proven winner!

Breeding: AI'd to DMR Cash Flow 535F30, UB10386538 on 5/9/22. Pasture exposed to DMR JRT Dynamic 30G36, R10434661 from 5/22/22 to 7/29/22.

148 JRT MS EMPIRE 624J

Born: 2/13/21 R10480872 Gen: 5 PHN: 624J Spring Bred Heifer JRT Brangus

DMR EMPIRE 795D12
R10267445

TJM THREE D 302A

MS DMR JETHRO 795Y2

QCB/WAT ESTANCIA 263X4

BWCC MS REAL DEAL 624W

CB FINAL CUT 924X
OAKS MS PATTON 302X3
MC JETHRO 0053
MS BRINKS UPPERCUT 795R9
BLANDA OF BRINKS 535R54
MISS HD 314 263J2
MC REAL DEAL 541R3
CCC MS NEWS DAY 624J

QCB MS 624A-ET
R10267445

BRANGUS
GE-EPDs

BW	WW	YW	REA	FT	IMF										
66 (88%)	601 (100%)	829 (93%)	12.11 (110%)	0.49 (116%)	5.37 (110%)										
CED	BW	WW	YW	M	TM	CEM	SC	REA	IMF	FT	Hfr Prg	Stay	CowWt	TI	FI
8.5	-0.5	27	43	6	20	4.06	0.62	0.59	0.09	0.024	8.16	1.37	4.94	2.27	-0.01

624J is an Empire daughter with 10 EPDs in the top 40% or better including top 3% CED, 10% BW, 15% REA, 20% CEM, and top 35% SC. Empire daughters continue to get it done and she is no exception. 624J is loaded with calving ease and plenty of power and performance as evident in her numbers. She scanned a 12.11 on REA to ratio (110) and a 5.37 on IMF to ratio a (110)! The calving ease and built in carcass in this female open the door for endless matings to power bulls across the breed. We choose to AI her to Dutton who is an up and coming Cash Flow son!

Breeding: AI'd to DMR Dutton 331H8, UB10462638 on 5/9/22. Pasture exposed to DMR JRT Dynamic 30G36, R10434661 from 5/22/22 to 7/29/22.



DMR Empire 795D12 • Sire of Lot 148

150 TTT MS ELDORADO 415J2

Born: 1/30/21 UB10481696 Gen: 1 PHN: 415J2 Spring Bred Heifer TTT Ranches, LLC

DMR ELDORADO 30B15
R10284830

TJM CORONADO 535X

SUHN'S MISS PATTON 30X6

CONNELLY CAPITALIST 028

MS BRINKS BRIGHT SIDE 415R23

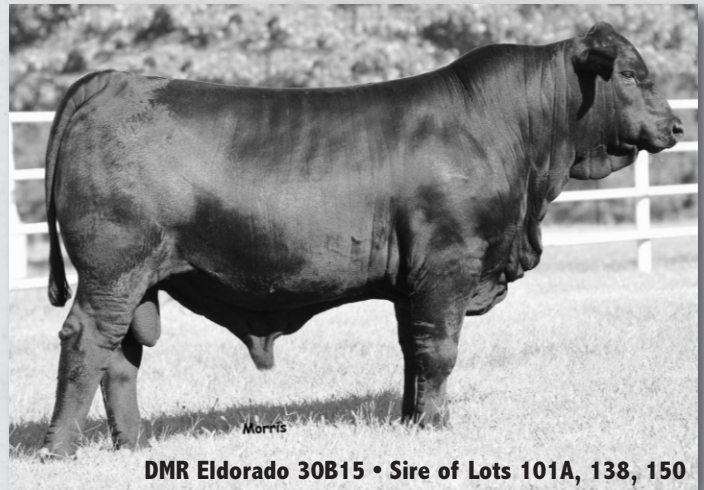
CB HOMBRE 541T3
MS BRINKS LAMBERT 535T4
PATTON OF BRINKS 30T22
SUHN'S MS DUKE 30M
S A V FINAL ANSWER 0035
PRIDES PITA OF CONANGA 8821
BRINKS BRIGHT SIDE 607L11
MISS BRINKS VAQUERO 4156

MS DMR CAPITALIST 415D
UB10324004

BW	WW	YW	REA	FT	IMF										
65 (100%)	439 (100%)	646 (100%)	7.80 (100%)	0.08 (100%)	4.16 (100%)										
CED	BW	WW	YW	M	TM	CEM	SC	REA	IMF	FT	Hfr Prg	Stay	CowWt	TI	FI
8.9	-0.4	36	64	0	18	3.95	0.82	0.54	0.28	0.023	7.45	1.7	-6.3	3.55	0.89

This UB2 has 12 traits in the top 35% including top 10% CED, REA HP and TI and top 15% in WW, YW and IMF. She is sired by Eldorado out of the \$48,000 DMR Ms Capitalist 415D, this heifer has calving ease, super growth and pedigree.

Breeding: AI'd to DMR Kingdom 535G45, R10434685 on 5/5/22. Pasture exposed to DMR Cross Fit 302G28, R10422007 from 5/15/22 to 7/30/22. Confirmed bred.



DMR Eldorado 30B15 • Sire of Lots 101A, 138, 150

151 L&W MS BEACON 914J

Born: 2/10/21 R10487388 Gen: 1 PHN: 914J Spring Bred Heifer L&W Cattle Co.

WCC BEACON 331F2-ET
R10417110

SUHN'S MAJESTIK BEACON 30C

MS DMR CORONADO 331C3

DMR COCHISE 222Z27

SCC MS VV ALLIANCE 914T3

TJM THREE D 302A
SCC MISS MYTTY 30Z5
TJM CORONADO 535X
MS CRC AFFIRMED 331U31
DMR AFFIRMED 331U24
MS BRINKS BS 607L11 222S3
VALLEY VIEW ALLIANCE 4073
SUHN'S MISS 803G3-914M4

L&W MS UB COCHISE 914C
UB10294036

BW	WW	YW	REA	FT	IMF										
75 (103%)	529 (93%)	777 (107%)	9.36 (110%)	0.11 (55%)	2.71 (76%)										
CED	BW	WW	YW	M	TM	CEM	SC	REA	IMF	FT	Hfr Prg	Stay	CowWt	TI	FI
2.3	1.1	27	63	8	21	0	0.49	0.39	-0.06	-0.006	4.03	0.72	0.71	2.58	0.33

This heifer has lots of volume and is just the right size. The 914 cow family has produced some great off spring for L&W. DDPC

Breeding: Pasture exposed to QVF Never Surrender 392J12, R10466402 from 5/1/22 to 9/1/22. Breeding status available sale day.



L&W Ms Beacon 914J



L&W Ms Beacon 200J

152 L&W MS BEACON 200J

Born: 1/20/21 R10483928 Gen: 6 PHN: 200J Spring Bred Heifer L&W Cattle Co.

WCC BEACON 331F2-ET
R10417110

SUHN'S MAJESTIK BEACON 30C

MS DMR CORONADO 331C3

RYR MS LEAD DEAL 200A2
R10252462

SOUTHERN DEAL MAKER 468W40

PB MS LEAD TYSON 200U1

TJM THREE D 302A
SCC MISS MYTTY 30Z5
TJM CORONADO 535X
MS CRC AFFIRMED 331U31
MC REAL DEAL 541R3
MS BRINKS BS 607L11 468S78
MR LEAD N JOHN WAYNE 21R3
PB MS TYSON KO ZOOM

BW	WW	YW	REA	FT	IMF										
70 (96%)	608 (107%)	748 (103%)	8.59 (101%)	0.3 (152%)	5.24 (147%)										
CED	BW	WW	YW	M	TM	CEM	SC	REA	IMF	FT	Hfr Prg	Stay	CowWt	TI	FI
4.2	0.7	37	63	5	24	0	0.45	0.23	0.42	0.023	4.68	0.88	5.11	3.63	-0.4

This heifer is moderate framed female with lots of volume and she is easy keeping. This is the kind of heifer that I hate to part with. **DDPC**

Breeding: Pasture exposed to QVF Never Surrender 392J12, R10466402 from 5/1/22 to 9/1/22. Breeding status available sale day.

153 GBF MS ATLANTA 889H7

Born: 10/22/20 R10474501 Gen: 1 PHN: 889H7 Spring Bred Heifer Galloway Brangus Farm

ATLANTA OF SALACOA 488Z
R10210625

LAMBERT OF BRINKS 317R3

MS SVF CADENCE 488X11

BWCC OVERLOAD 403A

VF MS SPECIAL 889Y

LEAD GUN OF BRINKS 222K14
MS BRINKS GOOD FORTUNE 317M
CADENCE OF BRINKS
MS BRINKS LEAD TIME 488N
S A V RESOURCE 144I
BWCC MS ELEGIDO 403Y
MC SOMETHING SPECIAL 129W14
BWC MS TANK 889T4

BW	WW	YW	REA	FT	IMF										
64 (100%)	354 (100%)	699 (100%)	8.62 (100%)	0.18 (100%)	3.48 (100%)										
CED	BW	WW	YW	M	TM	CEM	SC	REA	IMF	FT	Hfr Prg	Stay	CowWt	TI	FI
5.2	-0.2	36	61	11	30	1.87	0.88	0.6	0.28	0.014	7.57	1.76	-11.06	3.62	1.64

This Atlanta daughter out of an Overload daughter is a Donor prospect. Her EPDs shows 14 at or above 30% with top 1% Term, 4% REA, 10% Fert, TM, HP and CW, 15% WW, YW, SC, and IMF. All of this in a top 20% BW. Blood test bred to BWCC Final Time 313H2 a top son of the record setting RBM Ms Special Forces 313A.

Breeding: AI'd to BWCC Final Time 313H2, R10451991 on 5/23/22. Pasture exposed to BWCC Cross Fit 192E64, R10383125 from 5/28/22 to 7/21/22. Safe to AI date.

155 GBF MS FINAL E 504J

Born: 3/18/21 R10485566 Gen: 5 PHN: 504J Spring Bred Heifer Galloway Brangus Farm

COLLINS FINAL E 468C2
R10279787

CB FINAL CUT 924X

OAKS MS CSONKA 468X10

TCB CATAWBA WARRIOR R532

GBF MS JESSE CEO 504A

GBF MS CATAWBA 504C
R10285308

MC REVELATION 129T
RBM MS GUNS 924T3
CSONKA OF BRINKS 30R4
MS BRINKS SONAR 468P58
SR CADENCE WARRIOR H823
SR WARRIOR PRINCESS N332
JESSE OF BRINKS 392P105
GBF MS STARTUP CEO 504 916

BW	WW	YW	REA	FT	IMF										
86 (97%)	567 (95%)	810 (100%)	11.4 (100%)	0.32 (100%)	5.61 (100%)										
CED	BW	WW	YW	M	TM	CEM	SC	REA	IMF	FT	Hfr Prg	Stay	CowWt	TI	FI
6.6	-1	28	58	14	28	2.12	0.41	0.42	0.12	0.014	4.56	1.25	2.15	3.09	0.59

504J is blood test bred to BWCC Final Time 313H2 a top son of the record setting RBM Ms Special Forces 313A. 504J's EPDs list 10 at or better that 40% with 10% BW, 15% CED, Milk and TM, 20% REA. Her ultrasound at 5.6% IMF at REA/cwt of 1.40.

Breeding: AI'd to BWCC Final Time 313H2, R10451991 on 5/24/22. Pasture exposed to BWCC Cross Fit 192E64, R10383125 from 5/28/22 to 7/21/22. Safe to AI date.

157 RBC MS 468E14 BOCEPHUS 27J

Born: 3/5/21 R10485997 Gen: 1 PHN: 27J Spring Bred Heifer Roadruck Brangus Cattle

BWCC BOCEPHUS 468E14
UB10359939

BWCC BOCEPHUS 111C2

BWCC MS ROCK STAR 468Y14

SHERMAN OF RRR 548W9

MS RB CSONKA 27W2

S A V REWARD 3198
BWCC MS RIGHTEOUS 111A10
MC ROCK STAR 924U6
MISS BRINKS CADENCE 468G15
ROBERTSON OF BRINKS 209S9
MS BRINKS CAPTAIN 548N2
CSONKA OF BRINKS 30R4
MS RB GOOD FORTUNE 27R2

BW	WW	YW	REA	FT	IMF										
75 (92%)	613 (132%)	883 (103%)	12.67 (105%)	0.35 (118%)	2.28 (74%)										
CED	BW	WW	YW	M	TM	CEM	SC	REA	IMF	FT	Hfr Prg	Stay	CowWt	TI	FI
3.4	0.2	51	80	12	38	3.27	0.8	0.69	0.29	0.024	8.24	2.3	5.97	4.49	1.28

27J is by BWCC Bocephus 468E14 a son of the donor 468Y14 now at Vanna and Saddle Hill. Her EPDs are hard to better with top 2% REA, 5% Term, 10% WW, YW, TM and HP, 15% CED and IMF. Blood tested bred to BWCC Final Time 313H2 a top son of the record setting RBM Ms Special Forces 313A.

Breeding: AI'd to BWCC Final Time 313H2, R10451991 on 5/24/22. Pasture exposed to Bar X Mr Atlanta 675G1, R10432883 from 5/28/22 to 7/21/22. Safe to AI date.

159 BHF MS SOMETHING SOGGY 30J2

Born: 4/1/21 R10480854 Gen: 4 PHN: 30J2 Spring Bred Heifer Boot Hill Farms

BWCC SOMETHING SOGGY 24E
R10383257

BWCC SOMETHING SOGGY 111A4

BWCC MS BRAND NAME 24B3

MC NUFF SAID 889T50

MS IRON FARM REVELATION 30W2

TE MS NUFF SAID 30A
R10240434

MC SOMETHING SPECIAL 129W14
MC MS STRYKER 111U25
BWCC BRAND NAME 889Z48
BWCC MS REDEMPTION 24Z5
MC JOHN WAYNE 165N3
MC MS EXTRAVAGANT 889P4
MC REVELATION 129T
MS IRON FARM 636H2-30M

BW	WW	YW	REA	FT	IMF										
72 (100%)	557 (91%)	779 (104%)	10.1 (99%)	0.26 (70%)	1.94 (64%)										
CED	BW	WW	YW	M	TM	CEM	SC	REA	IMF	FT	Hfr Prg	Stay	CowWt	TI	FI
4.6	1.2	22	55	12	24	3.28	0.74	0.33	-0.18	-0.01	6.81	1.36	-1.68	1.96	1.27

This heifer is sired by our cleanup bull and out of a really good daughter of Nuff Said. She should mature into a really long and deep bodied cow.

Breeding: AI'd to ABF Black Granite 23D5, R10333005 on 5/16/22. Confirmed bred to the AI date.

160 BHF MS SOMETHING SOGGY 355J

Born: 3/4/21 R10480856 Gen: 5 PHN: 355J Spring Bred Heifer Boot Hill Farms

BWCC SOMETHING SOGGY 24E
R10383257

BWCC SOMETHING SOGGY 111A4

BWCC MS BRAND NAME 24B3

TE MS GAME CHANGER 355B
R10270021

MC GAME CHANGER 127Y42

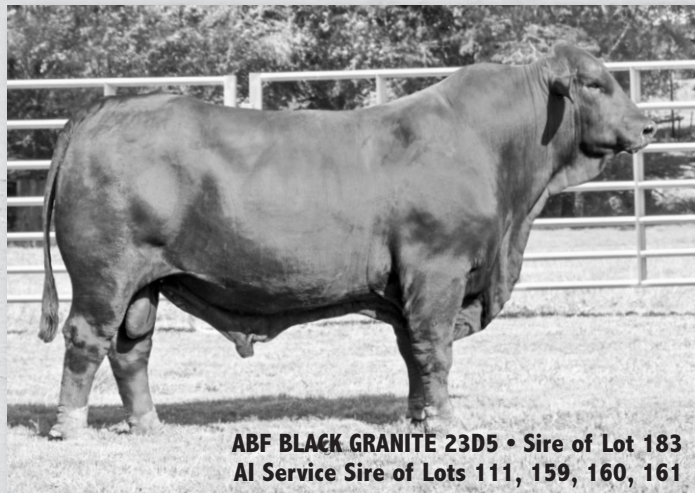
MS IRON FARM 789G5-355S

MC SOMETHING SPECIAL 129W14
MC MS STRYKER 111U25
BWCC BRAND NAME 889Z48
BWCC MS REDEMPTION 24Z5
MC SOMETHING SPECIAL 129W14
MC MS LUCIA 127W
BRIGHT SIDE OF BRINKS 789G5
MS IRON FARM 301J5-355N

BW	WW	YW	REA	FT	IMF										
68 (94%)	552 (90%)	765 (102%)	10.54 (104%)	0.42 (112%)	2.98 (99%)										
CED	BW	WW	YW	M	TM	CEM	SC	REA	IMF	FT	Hfr Prq	Stay	CowWt	TI	FI
5.9	1	21	57	11	22	4.9	0.96	0.51	0.15	0.023	4.34	1.57	-5.69	2.86	1.23

This heifer is out of our Something Soggy son and a Game Changer daughter.

Breeding: AI'd to ABF Black Granite 23D5, R10333005 on 5/16/22. Confirmed bred to the AI date.



ABF BLACK GRANITE 23D5 • Sire of Lot 183
AI Service Sire of Lots 111, 159, 160, 161

161 BHF MISS PROFIT 48J

Born: 2/8/21 R10480859 Gen: 5 PHN: 48J Spring Bred Heifer Boot Hill Farms

MC PROFIT 924B16
R10276882

MC CROSSOVER 834Y

RBM MS JETHRO 924U2

JJ MS LAMBERT
R10260344

BRINKS LAMBERT 535X8

CNF MISS FORESTER 48P6

LAMBERT OF BRINKS 317R3
MC MS GUNS 834W3
MC JETHRO 0053
MISS NMSU 924
LAMBERT OF BRINKS 317R3
JAK MISS CASINO 535L6
CNF LINK KELLEY 847K
CNF DUKE JULIE 48J

BW	WW	YW	REA	FT	IMF										
74 (103%)	660 (108%)	830 (111%)	11.09 (109%)	0.38 (101%)	3.14 (104%)										
CED	BW	WW	YW	M	TM	CEM	SC	REA	IMF	FT	Hfr Prq	Stay	CowWt	TI	FI
1.7	1.5	35	54	5	23	1.94	0.88	0.47	0.09	0.007	3.79	1.59	4.01	2.53	1.43

This heifer has been a standout from very early on. She is one that I hate to let go of. This mating of Profit and Lambert 48A has produced a phenomenal calf three years in a row. She's one of the best that we have raised to date. Be sure not to overlook her on sale day.

Breeding: AI'd to ABF Black Granite 23D5, R10333005 on 5/16/22. Confirmed bred to the AI date.



BHF Miss Profit 48J

162 BCC MS THREE D 468J5

Born: 3/24/21 R10485840 Gen: 5 PHN: 468J5 Spring Bred Heifer Black Oak Brangus

TJM THREE D 302A
R10244716

CB FINAL CUT 924X

OAKS MS PATTON 302X3

MS DMR GUARDIAN 468C7
R10296914

CRC GUARDIAN 9U8U5

MS BRINKS NEW ERA 468P14

MC REVELATION 129T
RBM MS GUNS 924T3
PATTON OF BRINKS 30T22
MISS BRINKS GERONIMO 302H6
CSONKA OF BRINKS 30R4
MISS 4L BEST BET 9U8P5
NEW ERA OF BRINKS 541J37
MISS BRINKS CADENCE 468G15

BW	WW	YW	REA	FT	IMF										
67 (100%)	602 (100%)	905 (100%)													
CED	BW	WW	YW	M	TM	CEM	SC	REA	IMF	FT	Hfr Prq	Stay	CowWt	TI	FI
4.5	0.3	37	62	5	23	4.51	0.73	0.44	0.01	-0.005	10.59	2.25	14.17	2.81	1.09

BCC Ms Three D 468J5 is a Three D daughter out of ABF's 468C7 donor. She is deep-bodied and thick-made. She projects top 5% WW, 10% YW and Terminal Index, 15% REA and top 35% IMF. Her full sib brought \$10,000 at last year's sale.

Breeding: AI'd to OCR Big Rock 17F, R10468877 on 7/10/22. Preg tested and confirmed bred to 17F.

163 G&R MS FINAL E 803J4

Born: 4/15/21 R10480931 Gen: 5 PHN: 803J4 Spring Bred Heifer J-1 Brangus

COLLINS FINAL E 468C2
R10279787

CB FINAL CUT 924X

OAKS MS CSONKA 468X10

G&R MS HOOVER 803E
R10346999

HOOVER OF MAJESTIK 535Z4

MS SOUTHERN REAL DEAL 803W16

MC REVELATION 129T
RBM MS GUNS 924T3
CSONKA OF BRINKS 30R4
MS BRINKS SONAR 468P58
BRAZILE OF BRINKS 535U13
MS SVF R532 535X4
MC REAL DEAL 541R3
MS BRINKS LOMBARDI 803S25

BW	WW	YW	REA	FT	IMF										
66 (84%)	284 (100%)	556 (100%)													
CED	BW	WW	YW	M	TM	CEM	SC	REA	IMF	FT	Hfr Prq	Stay	CowWt	TI	FI
7.9	-1.1	33	62	11	28	3.53	0.73	0.36	0.05	0.001	7.89	1.59	9.89	3.05	0.65

Here is a nice bred heifer sired by the Final E bull. On the bottom side she traces back to the dam of Never Surrender 803S25. She carries a outstanding 10 traits in the top 25% or better. Those are led by a top 10% in Ced and top 15% in ww, yw, sc, and term-index. With all of that, she is safe in calf to the 45,000 dollar Kingdom bull with a bull calf inside!

Breeding: AI'd to DMR Kingdom 535G45, R10434685 on 5/18/22. Pasture exposed to Pasture exposed to DMR Magnificent 535H24, R10478588 from 5/21/22 to 8/13/22.



MB Ms Toro 240H4

164 MB MS TORO 240H4

Born: 10/8/20 R10467343 Gen: 6 PHN: 240H4 Spring Bred Heifer Pine Knot Cattle Co.

CLVR EL TORO 23C2
R10307794

CLVR-TJM HUASTEKO 535A

CLVR MISS IRIS 23Y1

MB MS ANDERSON 240F9
R10412890

MB ANDERSON 99B7

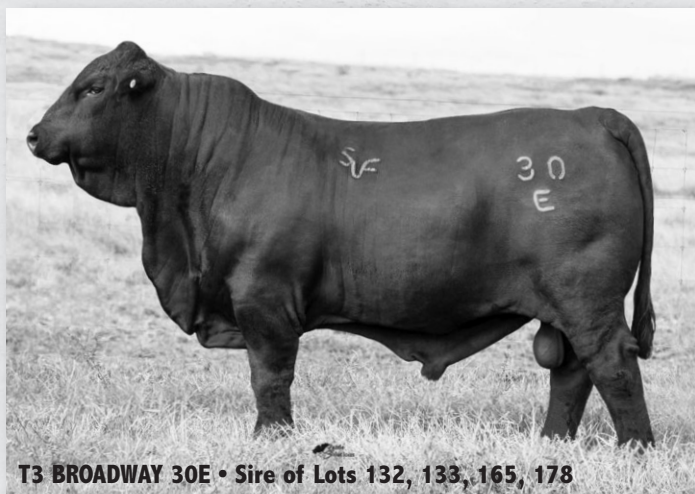
OAKS MS CSONKA 240U9

CB FINAL CUT 924X
SF MS NEWSMAN 535R3
SVF GARRETT 274 U229
SVF MS 23S101
MB YOSEMITE 17Y8
MB MS SOMETHING SPECIAL 99Y
CSONKA OF BRINKS 30R4
MS BRINKS NIMITZ 240P28

BW	WW	YW	REA	FT	IMF										
75 (98%)	543 (100%)	854 (100%)													
CED	BW	WW	YW	M	TM	CEM	SC	REA	IMF	FT	Hfr Prg	Stay	Cow Wt	TI	FI
1.1	2	45	77	13	36	0	0.52	0.43	0.23	0.019	4.48	0.91	3.21	3.88	0

She is one we hate to see go! She is a powerfully built heifer, that has been a consistent favorite in the heifer lot from day one. Her EPDs consist of top 4% of the breed for WW, YW, and TM and Top 20% for Milk, REA, and IMF. She blood tested pregnant on 7/17/22 to BWCC Big Town and we backed him up with our best young Final Result son who has CB Final Cut 924X (sire of TJM Three D) on the top and bottom of his pedigree, so its sure to be an exciting calf either way.

Breeding: AI'd to BWCC Big Town 192B16, R10266676 on 6/15/22. Pasture exposed to PKC Mr Final Result 729J2, R10492104 from 6/25/22 to sale date.



T3 BROADWAY 30E • Sire of Lots 132, 133, 165, 178

165 ERC MS BROADWAY 487J

Born: 3/24/21 R10465776 Gen: 8 PHN: 487J Spring Bred Heifer East Ridge Cattle

T3 BROADWAY 30E
R10367402

HOLLYWOOD OF SALACOA 23A53

MS SALACOA ATLANTA 30B5

VF MS OVERLOAD 487F
UB10407871

BWCC OVERLOAD 403A

BWCC MS BOULDER 487B28

NEW VISION OF SALACOA 209Y2
MS SVF PATTON 23Y66
ATLANTA OF SALACOA 488Z
MS BRINKS UNITAS 30T94
S A V RESOURCE 144I
BWCC MS ELEGIDO 403Y
MC BOULDER 889Z14
BWCC MS NUFF SAID 487Y9

BW	WW	YW	REA	FT	IMF										
78 (100%)	563 (100%)	836 (100%)	8.7 (100%)	0.06 (100%)	4.7 (100%)										
CED	BW	WW	YW	M	TM	CEM	SC	REA	IMF	FT	Hfr Prg	Stay	Cow Wt	TI	FI
2.8	0.6	38	68	8	27	0	1.05	0.62	-0.01	0.007	8.29	1.92	-6.44	3.11	1.67

We are excited to offer this great bred heifer sired by the \$67,500 Broadway 30E bull out of a powerful UB2 cow out of Vanna Farms program. Sunshine Acres and CJC Farms sold 487J's flush mate at Quail Valley's June sale for \$13,000 as a bred heifer. 10 traits in the top 25% of the breed. Extremely gentle. AI'd to a LBW son out of the \$120,000 313A cow that sold at Quail Valley's June 2022 sale and cleaned up to our calving ease Masterpiece son.

Breeding: AI'd to BWCC Final Time 313H2, R10451991 on 5/31/22. Pasture exposed to Suhn's Masterpiece 1012J, UB10479150 from 6/13/22 to 9/3/22. Safe In calf.

166 ERC MS XEROX 868J

Born: 2/28/21 UB10463153 Gen: 1 PHN: 868J Spring Bred Heifer East Ridge Cattle

LM XEROX 468G5
R10413181

OAKS XEROX 302C50

BLACK X MS OUTBACK 468E5

S A V BLACKCAP MAY 9868
EA19506930

S A V RAINDANCE 6848

S A V BLACKCAP MAY 5833

CB FINAL CUT 924X
OAKS MS PATTON 302X2
BXR/KCC OUTBACK 1302A13
BLACK X MS BASIN 468C
COLEMAN CHARLO 0256
S A V BLACKCAP MAY 4136
S A V REGISTRY 2831
S A V BLACKCAP MAY 4136

BW	WW	YW	REA	FT	IMF										
74 (103%)	417 (86%)	780 (96%)	8.21 (90%)	0.15 (94%)	3.72 (88%)										
CED	BW	WW	YW	M	TM	CEM	SC	REA	IMF	FT	Hfr Prg	Stay	Cow Wt	TI	FI
7.4	-0.4	40	68	6	26	0	0.89	0.45	0.18	0.01	6.33	1.61	2.69	3.57	0.89

Great bred UB1 female we are excited to offer. Look at this spread. Top 15% CED to Top 10% WW and YW. 11 traits in the Top 25%. This young females genetics really moves EPDs in the right direction. Sired by our LM Xerox son out of a power cow SAV Blackcap May 9868 who is sired by SAV Raindance out of a daughter of the great SAV Blackcap May 4136 which has generated over \$10 million in progeny sales

Breeding: AI'd to BWCC Final Time 313H2, R10451991 on 5/31/22. Pasture exposed to Suhn's Masterpiece 1012J, UB10479150 from 6/13/22 to 9/3/22. Safe In calf.



167 CCR MS INNOVATION 240J3

Born: 1/25/21 UB10485206 Gen: 1 PHN: 240J3 Spring Bred Heifer Cold Creek Ranch

MAR INNOVATION 251
EA16983331

CONNEALY IMPRESSION
MAR FINAL KAHUNA 856

CONNEALY REFLECTION
PEARL PAMMY OF CONANGA 194
S A V FINAL ANSWER 0035
MAR KAHUNA PRECISION 328 674
BURTIN'S TRANSFORMER 80363
SUHN'S MS CADENCE 331M3
CSONKA OF BRINKS 30R4
MS BRINKS NIMITZ 240P28

OAKS MS NEXT STEP 240Z2
R10216594

BRANGUS
GE-EPDS

SUHN'S NEXT STEP 331R7
OAKS MS CSONKA 240U5

BW	WW	YW	REA	FT	IMF										
79 (102%)	600 (105%)	816 (101%)	10.26 (103%)	0.16 (146%)	3.87 (130%)										
CED	BW	WW	YW	M	TM	CEM	SC	REA	IMF	FT	Hfr Prg	Stay	CowWt	TI	FI
2.8	1.3	39	73	8	28	2.92	1.05	0.47	0.33	0.008	4.02	1.58	3.15	4.02	1.14

Cold Creek Ranch is proud to offer this beautiful UB1 bred heifer for your consideration. Out of one of the most successfully used Angus bulls in the Ultrablack program, MAR Innovation 251, and an interesting and rare tried-and-true Next Step daughter, 240J3 will compliment any herd sire. Her EPD profile is strong and balanced. Take a look at her 10 top 35% or better EPDs and Indexes including top 5% YW, top 20% Fertility Index, and high carcass. To top it off, she is very docile and easy to work with. 240J3 took to her first AI breeding to the low birth weight, high growth BWCC Hugo 484H7 bull which will produce an outstanding UB2 calf.

Breeding: AI'd to BWCC Hugo 484H7, R10472434 on 5/5/22. Ultrasounded safe. ECD: 2/10/23.



CCR Ms Innovation 240J3

168 CCR MS 716 CONFIRMED 541H7

Born: 11/29/20 UB10471814 Gen: 1 PHN: 541H7 Spring Bred Heifer Cold Creek Ranch

COLD CREEK CONFIRMED 1912-716
EA19138129

RB CONFIRMED 02-4524
R B LADY PARTY 1912-844

K C F BENNETT ABSOLUTE
RB LADY STANDARD 305-02
WERNER WAR PARTY 2417
R B LADY FOCUS 303-844
MC BOULDER 889Z14
MC MS 778 TRAVELER 834Z
CRC LANDAU 263X2
MS BRINKS GD FORTUNE 541P96

COLD CREEK MS GRANITE 541D6
R10331584

MC GRANITE 834B
COLD CREEK MS LANDAU 541Z72

BW	WW	YW	REA	FT	IMF										
78 (101%)	574 (100%)	835 (99%)	10.36 (100%)	0.25 (133%)	5.59 (140%)										
CED	BW	WW	YW	M	TM	CEM	SC	REA	IMF	FT	Hfr Prg	Stay	CowWt	TI	FI
5.9	0.1	32	61	3	20	1.96	0.82	0.21	0.56	0.032	5.02	1.26	-1.73	3.86	0.21

Another signature Cold Creek Ranch Ultrablack, we are proud to offer this phenomenal UB1 bred heifer. This girl really has it all. Out of one of our best enrolled Angus herd sires (Cold Creek Confirmed 1912-716, whose dam is RB Lady Party 1912-844, the matron of our new 1912 cow family) and a really nice Granite daughter, 541H7 will be a great addition to anyone's herd. Her EPD profile is powerful. She boasts nine top 35% or better EPD traits and indexes. Phenotypically she packs muscle and bone and is a cattleman's dream. She took to her first AI (to the low birth weight, high growth GACC Land Line 102F1 bull) which will result in an outstanding second generation UB1 calf. We have some knock out Land Line calves on the ground, and this one will surely fit that bill. Please note that she did NOT miss a breeding season. We moved all of our fall heifers in her contemporary group to the spring for spring breeding. This potential donor cow is one you don't want to miss! **CAF**

Breeding: AI'd to GACC Land Line 102F1, UB10395579 on 5/5/22. Ultrasounded safe. ECD: 2/10/23.



CCR Ms 716 Confirmed 541H7

169 MS. EF CENTER SECTION 468J

Born: 1/4/21 R10486580 Gen: 1 PHN: 468J Spring Bred Heifer Evitts Farms

BWCC CENTER SECTION 7F7
UB10411375

BWCC HOT SHOT 192D31
BWCC MS DOC 7D6

BWCC SLICK 7B
BWCC MS STATEMENT 192B48
BWCC DOC 111B6
BWCC MS FLIGHT DECK 7Z
MC HARD ROCK 708X7
BWCC MS 129 JETHRO 889Y13
MC BOULDER 889Z14
CJF MS REAL DEAL 468X

MS EF SOUTHERN COMFORT 468G3
R10423170

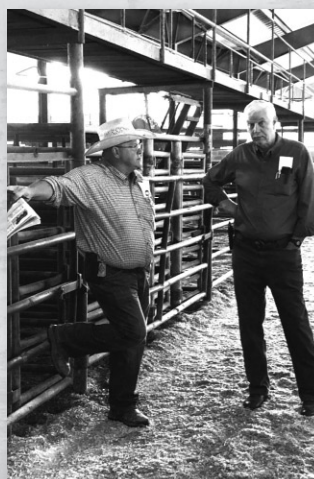
BRANGUS
GE-EPDS

BWCC SOUTHERN COMFORT 889A
MS. EF BOULDER 468E

BW	WW	YW	REA	FT	IMF										
66 (82%)	513 (81%)	820 (97%)	9.1 (90%)	0.21 (67%)	4.68 (91%)										
CED	BW	WW	YW	M	TM	CEM	SC	REA	IMF	FT	Hfr Prg	Stay	CowWt	TI	FI
7.1	-0.2	37	71	7	26	0	0.62	0.6	0.38	0.041	6.13	1.99	8.09	4.13	0.47

This is one of two BWCC Center Section 7F7 daughters we are offering in the sale. She is from our 468 cow family. She is one of our favorites, big-topped, big-middled and square-made in an easy keeping package. This heifer has Boulder and Southern Comfort on her maternal side. Nine traits in the top 25% of the breed.

Breeding: AI'd to BWCC Motorhead 192B44, UB10293143 on 3/18/22. Pasture exposed to BWCC Reward 980E11, UB10383215 from 4/3/22 to 6/3/22 and to EF Center Section 468J, R10486581 from 6/3/22 to 8/3/22.



170 MS. EF MCQUEEN 89J

Born: 2/5/21 R10486587 Gen: 1 PHN: 89J Spring Bred Heifer **Evitts Farms**

BWCC MCQUEEN 192E24
UB10359871

BWCC CROSS FIT 541B28
BWCC MS CHILL FACTOR 192A60

MC CROSSOVER 834Y
MC MS LUCIA 541U
S A V CHILL FACTOR 1418
MISS 4C LEAD GUN 192P4
GARRETT OF BRINKS 789P
MISS STALWART 553U1
ELC MR PATTON 23Y4
ELC MS R532 793Z

MS EF GARRETT 89D
R10317002

BRANGUS
GE-EPDs

EF GARRETT OF STALWART 87
ELC MISS PATTON 793B6

BW	WW	YW	REA	FT	IMF										
80 (99%)	600 (94%)	838 (99%)	8.82 (88%)	0.23 (75%)	4.83 (94%)										
CED	BW	WW	YW	M	TM	CEM	SC	REA	IMF	FT	Hfr Prq	Stay	Cow Wt	TI	FI
3.2	0.8	33	63	5	22	0	1.14	0.29	0.2	0.003	3.53	0.85	-1.89	3.16	0.52

This BWCC McQueen 192E24 daughter is sure to be a calf raiser. Our 89 cow family always raises good calves. Her dam is out of a Garrett of Brinks son we raised and liked an awful lot. She has top 20% growth numbers while maintaining a moderate BW EPD.

Breeding: AI'd to DMR Kingdom 535G45, R10434685 on 3/18/22. Pasture exposed to BWCC Reward 980E11, UB10383215 from 4/3/22 to 6/3/22 and to EF Center Section 468J, R10486581 from 6/3/22 to 8/3/22.

171 MS. EF CENTER SECTION 87J2

Born: 1/14/21 R10486584 Gen: 1 PHN: 87J2 Spring Bred Heifer **Evitts Farms**

BWCC CENTER SECTION 7F7
UB10411375

BWCC HOT SHOT 192D31
BWCC MS DOC 7D6

BWCC SLICK 7B
BWCC MS STATEMENT 192B48
BWCC DOC 111B6
BWCC MS FLIGHT DECK 7Z
MC BOULDER 889Z14
BWCC MS NUFF SAID 10X
MB SOMETHING SPECIAL 535Y7
MISS STALWART 553U1

MS EF BOULDER 87G
R10423202

BRANGUS
GE-EPDs

AV BOULDER 10C16
MS EF 87C

BW	WW	YW	REA	FT	IMF										
80 (99%)	600 (94%)	833 (98%)	9.69 (96%)	0.32 (105%)	5.24 (102%)										
CED	BW	WW	YW	M	TM	CEM	SC	REA	IMF	FT	Hfr Prq	Stay	Cow Wt	TI	FI
2.5	2	43	71	11	33	0	0.52	0.58	0.48	0.051	6.02	1.86	-0.05	4.19	0.54

Our other BWCC Center Section 7F7 heifer is from one of our most productive cow families. We have kept every 87 heifer in our herd until this one. She maintains eight traits in the top quarter of the breed led by top 4% WW and 3%TM EPDs.

Breeding: AI'd to DMR Kingdom 535G45, R10434685 on 3/19/22. Pasture exposed to BWCC Reward 980E11, UB10383215 from 4/3/22 to 6/3/22 and to EF Center Section 468J, R10486581 from 6/3/22 to 8/3/22.



172 MCB MS L PURCHASE 468H1

Born: 2/16/20 UB10442125 Gen: 2 PHN: 468H1 Spring Bred Heifer **Magnolia Creek Brangus**

DMR LOUISIANA PURCHASE 924D10
R10323539

TJM THREE D 302A
RBM MS JETHRO 924W5

CB FINAL CUT 924X
OAKS MS PATTON 302X3
MC JETHRO 00S3
MISS NMSU 924
A A R TEN X 7008 S A
S A V MADAME PRIDE 1134
MC JETHRO 00S3
MS BRINKS BS 607L11 468S77

MCB MS TEN SPEED 468F11
UB10374108

BRANGUS
GE-EPDs

S A V TEN SPEED 3022
MISS SOUTHERN JETHRO 468Y29

BW	WW	YW	REA	FT	IMF										
56 (80%)	424 (87%)	676 (100%)	9.09 (100%)	0.25 (100%)	3.98 (100%)										
CED	BW	WW	YW	M	TM	CEM	SC	REA	IMF	FT	Hfr Prq	Stay	Cow Wt	TI	FI
6.2	-0.2	29	48	2	16	3.51	0.63	0.44	0.08	0.012	7.01	2.56	6.36	2.36	1.7

Long-bodied and sired by the \$100,000 Louisiana Purchase, her 468 family is well known for fertility and productivity. She has nine EPD traits in the top 35%, including 4% Stay, 10% HP, Fertility; 15% REA. She has a big EPD spread from birth (20%) to weaning (30%). Bred to our heavily muscled 919H2 herd sire.

Breeding: Pasture exposed to MCB Relax 919H2, UB10442129 from 5/16/22 to 7/31/22. Blood tested safe and expected to calve in March 2023.



BWCC Top Shelf 468H82 • AI Service Sire of Lot 173

173 AV MS RAWHIDE 192J2

Born: 2/6/21 UB10477728 Gen: 1 PHN: 192J2 Spring Bred Heifer **Hartness Brangus**

BWCC RAWHIDE 924F42
R10411179

BWCC CROSS FIT 541B28
RBM MS GUNS 924T3

MC CROSSOVER 834Y
MC MS LUCIA 541U
MC GUNS DONOVAN 124R
RBM MS 52 COOL HAND 924R
S A V RESOURCE 1441
S A V EMBLYNETTE 7545
MC GUNS DONOVAN 124R
BWCC MS REVELATION 192W8

BWCC MS MASSIVE 192D5
UB10336195

BRANGUS
GE-EPDs

S A V REAL MASSIVE 4879
BWCC MS GUNS DEE 192B8

BW	WW	YW	REA	FT	IMF										
52 (100%)	530 (100%)														
CED	BW	WW	YW	M	TM	CEM	SC	REA	IMF	FT	Hfr Prq	Stay	Cow Wt	TI	FI
2.7	1.6	44	74	2	25	1.3	0.62	0.6	0.21	0.003	8.58	2.27	4.19	3.76	1.5

This UB2 Heifer is as gentle as they come. She is out of the great BWCC Ms Massive 192D5 cow that is still doing great things at AV Brangus. Her heritage is deeply embedded in the Blackwater genetic cow families. She has nine traits in the top 35% of the breed or better, including: top 4% for WW, REA and Heifer Preg; top 5% for YW; top 10% for Stay and Term Index; top 15% for Fert. Index; and top 20% for IMF.

Breeding: AI'd to BWCC Top Shelf 468H82, R10457860 on 6/10/22. Pasture exposed to BWCC Chiseled 468G58, 10434380 from 6/20/22 to 8/11/22.

174 MS TBCC INVESTMENT 415J

Born: 1/24/21 R10503161 Gen: 6 PHN: 415J Open Heifer The Boys Cattle Co.

DMR INVESTMENT 535F40
R10386630

DMR EMPIRE 795D12

WAT MS BAXTER 535C

TJM CORONADO 535X

MS CRC NEWT 415T6

TJM THREE D 302A
MS DMR JETHRO 795Y2
CB HOMBRE 132X7
MS RJ NEWT 535T
CB HOMBRE 541T3
MS BRINKS LAMBERT 535T4
NEWT OF BRINKS 302P16
MS BRINKS BRIGHT SIDE 415K6

MS DMR CORONADO 415A
R10239466

BW	WW	YW	REA	FT	IMF										
76 (100%)	548 (100%)	887 (100%)													
CED	BW	WW	YW	M	TM	CEM	SC	REA	IMF	FT	Hfr Prg	Stay	Cow Wt	TI	FI
9.9	-1.7	24	43	8	21	2.6	0.54	0.27	0.03	0.024	5.95	1.14	-3.26	2.09	0.27

Sired by DMR Investment and out of a prolific Coronado daughter. From the famed Draggin', M herd.



Ms TBCC Investment 415J

175 HH MS CHISELED 889J3

Born: 11/20/21 R10496241 Gen: 4 PHN: 889J3 Open Heifer Hartness Brangus

BWCC CHISELED 468G58
R10434380

BWCC CROSS FIT 541B28

BWCC MS STATEMENT 468B32

MC RIGHTEOUS 924X2

BWC MS TANK 889T4

MC CROSSOVER 834Y
MC MS LUCIA 541U
BWCC STATEMENT 036Z
BWCC MS ROCK STAR 468Y14
MC REVELATION 129T
RBM MS JETHRO 924U2
MC JOHN WAYNE 165N3
MC MS EXTRAVAGANT 889P4

VF MS RIGHTEOUS 889B22
R10288803

BRANGUS
GE-EPDS

BW	WW	YW	REA	FT	IMF										
79 (100%)															
CED	BW	WW	YW	M	TM	CEM	SC	REA	IMF	FT	Hfr Prg	Stay	Cow Wt	TI	FI
1.7	2.2	42	66	2	24	2.88	0.99	0.41	0.26	0.002	7	1.96	8.97	3.37	1.09

Another great donor prospect out of the first class of BWCC Chiseled 468G58 that we purchased for \$26,000 from Vanna farms at BWCC sale that is producing first class heifers. Her dam VF Ms Righteous 889B22 is another acquisition that Hartness Brangus made from Vanna Farms. This heifer is as good as they come out of the great BWCC 889 cow family. She has eight traits in the top 20% of the breed or better with top 5% for WW; top 10% for YW, SC and Heifer Preg; top 15% for IMF, Stay and top 20% for REA.



BWCC Chiseled 468G58 • Sire of Lots 175, 176

176 HH MS CHISELED 541J

Born: 9/29/21 R10496239 Gen: 2 PHN: 541J Open Heifer Hartness Brangus

BWCC CHISELED 468G58
R10434380

BWCC CROSS FIT 541B28

BWCC MS STATEMENT 468B32

BWCC CRUISE 323D3

VF MS ROCKSTAR 541X

MC CROSSOVER 834Y
MC MS LUCIA 541U
BWCC STATEMENT 036Z
BWCC MS ROCK STAR 468Y14
BWCC CRUISE 889Z28
BWCC MS ROCK SOLID 323B
MC ROCK STAR 924U6
MC MS 661 JOHN WAYNE 541S4

VF MS CRUISE 541G3
R10434372

BRANGUS
GE-EPDS

BW	WW	YW	REA	FT	IMF										
72 (91%)															
CED	BW	WW	YW	M	TM	CEM	SC	REA	IMF	FT	Hfr Prg	Stay	Cow Wt	TI	FI
0.7	2.9	42	69	3	25	0	1.02	0.5	0.3	0.018	4.56	2.36	7.94	3.58	1.57

This young donor prospect is again sired by the first class of BWCC Chiseled 468G58 bull. This first year heifer's dam is a young donor prospect Hartness Brangus acquired in the purchase of Vanna Farm's fall registered herd VF Ms Cruise 541G3 who is out of the great VF Ms Rockstar 541X that goes back to the great donor 541S4. This heifer is deeply embedded in the 541 cow family genetics that is still making great prospects at Vanna Farms, Mound Creek, ACE and many other herds. She has eight traits in the top 15% of the breed or better with 5 top 10%. Top 5% for WW, top 10% for YW, SC, REA, Stay and Term Index and top 15% for IMF and Fert. Index.

177 VF MS EMPOWER 000J20

Born: 10/14/21 UB10490661 Gen: 1 PHN: 000J20 Open Heifer Vanna Farms

QVF PR EMPOWER 30G16
R10412716

NEVER SURRENDER OF SALACOA 803J9

T3 MS THREE D 30D

S A V CHILL FACTOR 1418

VF MS GAME CHANGER 000B4

VF MS CHILL FACTOR 000D3
UB10322496

MC BOULDER 889Z14

MS BRINKS LOMBARDI 803S25

TJM THREE D 302A

MS SALACOA ATLANTA 30B5

RITO 707 OF IDEAL 3407 7075

S A V BLACKCAP MAY 4136

MC GAME CHANGER 127Y42

MC MS QUIET LADY 000S50

BW	WW	YW	REA	FT	IMF										
82 (100%)	692 (100%)	788 (100%)													
CED	BW	WW	YW	M	TM	CEM	SC	REA	IMF	FT	Hfr Prg	Stay	Cow Wt	TI	FI
2.3	2.5	52	96	3	30	3.34	1.1	0.71	0.29	0.02	8.36	2.12	2.47	4.86	1.15

VF Ms Empower 000J20 is out of our donor VF Ms Chill Factor 000D3 that we consider to be the best 000550 granddaughter and the best donor that Vanna farms have raised. Her full sister donor prospect 000J28 sold for \$20,000 to Marshall Farms and her last four daughters sold averaged \$14,000. She also has full brothers selling this fall in the QVF bull sale that will be contenders for high-selling bulls. Her sire QVF Empower 30J16 is one of the upcoming herd sires in the breed that is out of 30D. This genetic donor prospect has three traits in the top 1% and eight traits top 10%!



VF Ms Chill Factor 000D3 • Dam of Lot 178

178 VF MS BROADWAY 000J6

Born: 10/10/21 UB10490629 Gen: 1 PHN: 000J6 Open Heifer Vanna Farms

T3 BROADWAY 30E
R10367402

VF MS CHILL FACTOR 000D3
UB10322496

HOLLYWOOD OF SALACOA 23A53

MS SALACOA ATLANTA 30B5

S A V CHILL FACTOR 1418

VF MS GAME CHANGER 000B4

NEW VISION OF SALACOA 209Y2
MS SVF PATTON 23Y66
ATLANTA OF SALACOA 488Z
MS BRINKS UNITAS 30T94
RITO 707 OF IDEAL 3407 7075
S A V BLACKCAP MAY 4136
MC GAME CHANGER 127Y42
MC MS QUIET LADY 000S50

BW	WW	YW	REA	FT	IMF											
5.3	0	42	73	1	22	1.76	1	0.46	0.21	0.01	0.01	8.16	1.8	-4.33	3.74	1.19

From the great 000 tribe that starts from the grandam 000S50 that has done so much for the Brangus breed and Vanna Farms. Out of the best daughter raised at VF, VF Ms Chill Factor 000D3. She has done everything we have asked her to do and has sold four females at the last sales for an average \$14,000. VF 000D3 has young herd sire candidates selling this fall at QVF that are going to be at the top of the sale. VF Ms Broadway 000J6 is sired by T3 Broadway which sold for \$67,000 at SVF. She has three EPD traits in the top 5% and eight traits in the top 20%.



BWCC Papillon 458G • Sire of Lot 179

179 VF MS PAPILLON 468J74

Born: 9/2/21 R10490635 Gen: 1 PHN: 468J74 Open Heifer Vanna Farms

BWCC PAPILLON 458G
R10444522

BWCC MS OVERLOAD 468D22
UB10336046

BWCC MCQUEEN 192E24

BWCC MS BOUNCER 458C

BWCC OVERLOAD 403A

BWCC SHE'S SPECIAL 468Y18

BWCC CROSS FIT 541B28
BWCC MS CHILL FACTOR 192A60
MC BOUNCER 1420Z4
BWCC MS FLIGHT DECK 458Z
S A V RESOURCE 1441
BWCC MS ELEGIDO 403Y
MC SOMETHING SPECIAL 129W14
MISS BRINKS CADENCE 468G15

BW	WW	YW	REA	FT	IMF										
61 (100%)	551 (100%)	661 (100%)													
8.5	-1.5	38	69	15	35	4.38	0.69	0.74	0.41	0.034	7.09	2.72	7.1	4.47	1.73

This young female has the hottest genetics in the breed. Out of one of the best donors in the breed BWCC Miss Overload 468D22 that has done all we can ask of her. At her young age she is a no miss elite donor that has already raised multiple herd sires including BWCC Merger 468F9 and more in the pipe line selling this fall at ACE. She has had five heifers in the past three sales average \$20,000 each. She is by one of the hottest young herd sires in the breed BWCC Papillon 458G that sold a record setting \$1,800 a straw. She has 12 traits in the top 10% of the breed, two of those are in the top 2%, two are in the top 3% and one in the top 5%!



ABF Ms Top Gun 188J

180 ABF MS TOP GUN 188J

Born: 10/19/21 R10488772 Gen: 4 PHN: 188J Open Heifer Addison Brangus Farms

ABF TOP GUN 468G2
R10425008

QCB MS CSONKA 188Y14
R10198869

DMR ELDORADO 30B15

MS DMR GUARDIAN 468C7

CSONKA OF BRINKS 30R4

QCB MS188R

TJM CORONADO 535X
SUHN'S MISS PATTON 30X6
CRC GUARDIAN 9UBUS
MS BRINKS NEW ERA 468P14
LEAD GUN OF BRINKS 222K14
MISS BRINKS UPPERCUT 30L18
CCC BRAVEHEART 738M
CCC MS CADENCE 188N5

BW	WW	YW	REA	FT	IMF										
71 (100%)	625 (100%)	900 (100%)	12.07 (100)	0.25 (100)	2.83 (100)										
4.9	0.7	28	53	8	22	3.75	0.83	0.48	0.1	-0.002	8.33	2.26	1.76	2.65	1.9

This Top Gun daughter has a great look and a great set of balanced EPDs. 188J has 14 EPDs breed average or better, including top 1% Term Index, 10% Heifer Preg. and Fert. Index and 15% REA and Stay. With DMR Eldorado on the top side of her pedigree and Csonka of Brinks on the bottom side, 188J should be a great productive female. She sells open.

181 ABF MS BIG TOWN 20J

Born: 8/26/21 UB10488775 Gen: 1 PHN: 20J Open Heifer Addison Brangus Farms

BWCC BIG TOWN 192B16
R10266676

MC NUFF SAID 889T50
BWCC MS REVELATION 192W8

MC JOHN WAYNE 165N3
MC MS EXTRAVAGANT 889P4
MC REVELATION 129T
MISS 4C LEAD GUN 192P4
RITO 707 OF IDEAL 3407 7075
S A V BLACKCAP MAY 4136
CRC GUARDIAN 9U8U5
HF MISS LEAD GUN 20T

ABF MS RESOURCE 20G
UB10426566

S A V RESOURCE 1441
ABF MS GUARDIAN 20B

BRANGUS
GE-EPDs

BW	WW	YW	REA	FT	IMF										
67 (95%)	591 (93%)	886 (95%)	12.07 (100)	0.25 (100)	2.83 (100)										
CED	BW	WW	YW	M	TM	CEM	SC	REA	IMF	FT	Hfr Prg	Stay	CowWt	TI	FI
4.9	0.7	28	53	8	22	3.75	0.83	0.48	0.1	-0.002	8.33	2.26	1.76	2.65	1.9

The 20 cow family has been a great part of our registered cow herd for many years. The 20's are fertile and raise great calves. 20J has an outstanding look and an outstanding set of EPDs. She has 11 EPDs in the breeds top 30% or better, including top 1% Heifer Preg., 5% WW and REA and 10% YW and SC. 20J is also a 3/4 sib to MC Boom Town 541F4 and MC Big Tex 541F2. She sells open.



ABF Ms Big Town 20J

182 ABF MS RAINDANCE 20J2

Born: 8/28/21 UB10488773 Gen: 1 PHN: 20J2 Open Heifer Addison Brangus Farms

S A V RAINDANCE 6848
EA18578965

COLEMAN CHARLO 0256
S A V BLACKCAP MAY 4136

O C C PAXTON 730P
BOHI ABIGALE 6014
S A V 8180 TRAVELER 004
S A V MAY 2397
CONKA OF BRINKS 30R4
MISS 4L BEST BET 9U8P5
BRINKS LEAD GUN 415P44
CLEMS NIMITZ 20P6

ABF MS GUARDIAN 20B
R10277457

CRC GUARDIAN 9U8U5
HF MISS LEAD GUN 20T

BRANGUS
GE-EPDs

BW	WW	YW	REA	FT	IMF										
68 (96%)	624 (98%)	899 (96%)	10.40 (98)	0.33 (70)	4.11 (95)										
CED	BW	WW	YW	M	TM	CEM	SC	REA	IMF	FT	Hfr Prg	Stay	CowWt	TI	FI
4.8	1.1	46	82	3	26	2.97	0.78	0.41	0.25	0.011	4.08	1.38	1.61	4.11	0.71

Our SAV Raindance calves have been very impressive, and 20J2 is no exception. She is correct in stature and gentle to boot. Ms Raindance has 10 EPDs in the breeds top 45%, including top 2% YW, 3% WW, 15% IMF and 20% SC, REA, and Stay. Don't miss out on this impressive female. She sells open.



ABF Ms Raindance 20J2

183 ABF MS BLACK GRANITE 535J2

Born: 9/28/21 R10488781 Gen: 2 PHN: 535J2 Open Heifer Addison Brangus Farms

ABF BLACK GRANITE 23D5
R10333005

MC GRANITE 834B
SVF MS 535P9 23S104

MC BOULDER 889Z14
MC MS 778 TRAVELER 834Z
BUENO OF SALACOA 535P9
SVF MS 23P57
CADENCE OF BRINKS
SVF MS 23M28
MC NUFF SAID 889T50
SVF CATAWBA 535 T685

ABF MS ON TASK 535E
R10346651

ON TASK OF SALACOA 23Y42
L&W MS NUFF SAID 685Z

BRANGUS
GE-EPDs

BW	WW	YW	REA	FT	IMF										
71 (100%)	593 (93%)	868 (93%)	9.63 (90)	0.63 (135)	5.37 (125)										
CED	BW	WW	YW	M	TM	CEM	SC	REA	IMF	FT	Hfr Prg	Stay	CowWt	TI	FI
3.4	0.4	28	55	10	25	4.11	0.83	0.41	0.12	0.02	4.78	1.76	-7.47	2.72	1.55

535J2 is the only ABF Black Granite 23D5 daughter that I have to offer in this years sale. Black Granite daughters have been well sought after in our past sales and this female should be also. She is deep flanked with a feminine look and has 14 EPDs in the breeds top 35% or better, including top 1% Term Index, 15% Stay and Fert Index and 20% SC, REA and Cow WT. Don't miss an opportunity to own this fancy Black Granite female. She sells open. CAF



ABF Ms Black Granite 535J2



JRT Ms Dynamic 468J8

184 JRT MS DYNAMIC 468J8

Born: 10/24/21 R10506033 Gen: 6 PHN: 468J8 Open Heifer JRT Brangus

DMR JRT DYNAMIC 30G36
R10434661

DMR EMPIRE 795D12

MS DMR CHAIRMAN 30C2

JRT MS ELDORADO 468G6
R10423446

DMR ELDORADO 30B15

MS DMR GUARDIAN 468C7

TJM THREE D 302A
MS DMR JETHRO 795Y2
DMR THE CHAIRMAN 415A11
SUHN'S MISS PATTON 30X6
TJM CORONADO 535X
SUHN'S MISS PATTON 30X6
CRC GUARDIAN 9U8U5
MS BRINKS NEW ERA 468P14

BW	WW	YW	REA	FT	IMF										
76 (100%)	571 (100%)														
CED	BW	WW	YW	M	TM	CEM	SC	REA	IMF	FT	Hfr Prg	Stay	Cow Wt	TI	FI
7.4	-0.3	33	55	2	18	0	0.85	0.51	0.09	0.009	8.84	2	1.88	2.74	1.13

468J8 is one of the first Dynamic heifers to sale at auction. Her pedigree is full of Royalty! She is a granddaughter of the great 468C7 donor from Addison Brangus Farms who also sells in this sale. She is very feminine with plenty of length, depth, and a great disposition! She posts eight EPDs in the top 25% including top 3% heifer pregnancy, 10% CED, REA, Stay, 15% BW, and top 25% YW and SC. She would make a great addition to any herd.



MCB Ms Paragon 110J

185 MCB MS PARAGON 110J

Born: 3/16/21 R10474415 Gen: 6 PHN: 110J Open Heifer Magnolia Creek Brangus

TC PARAGON 30D4
R10336252

TJM THREE D 302A

TC MS NEW VISION 30A3

RYR MS SINGLE LEAD 110A
R10238276

SOUTHERN SINGLETARY 392U2

PB MS LEAD PATHS SHADOW 110U

CB FINAL CUT 924X
OAKS MS PATTON 302X3
NEW VISION OF SALACOA 209Y2
TC MS NIMITZ 30X
SINGLETARY OF BRINKS 675R
MS BRINKS BS 607L11 392585
MR LEAD N JOHN WAYNE 21R3
PB MS PATH SHADOW 110M1

BW	WW	YW	REA	FT	IMF										
76 (97%)	524 (93%)	694 (86%)	7.99 (90%)	0.08 (71%)	1.29 (85%)										
CED	BW	WW	YW	M	TM	CEM	SC	REA	IMF	FT	Hfr Prg	Stay	Cow Wt	TI	FI
2.8	0.7	31	52	5	21	2.97	0.28	0.45	0.08	-0.003	4.8	0.7	-2.1	2.55	0.21

This big-middled, big-hipped, attractive Paragon heifer has a moderate birth weight with added growth. Her balanced EPDs and outcross pedigree will work well with most of today's Brangus or ultrablack bulls. She is easy fleshing and easy on the eyes and should produce marketable calves.



AV Ms Bedrock 158K

186 AV MS BEDROCK 158K

Born: 2/12/22 UB10506772 Gen: 3 PHN: 158K Open Heifer AV Brangus

MC BEDROCK 541G20
UB10449664

MC BOULDER 889Z14

MC MS RESOURCE 541A4

BWCC SHE'S FIT 158F15
UB10411274

BWCC CROSS FIT 541B28

BWCC MS RESOURCE 158B4

MC SOMETHING SPECIAL 129W14
MC MS EXTRAVAGANT 889X4
S A V RESOURCE 1441
MC MS ROCK STAR 541X10
MC CROSSOVER 834Y
MC MS LUCIA 541U
S A V RESOURCE 1441
BWCC MS JETHRO 158

BW	WW	YW	REA	FT	IMF										
78 (99%)															
CED	BW	WW	YW	M	TM	CEM	SC	REA	IMF	FT	Hfr Prg	Stay	Cow Wt	TI	FI
3.4	1.4	40	72	5	25	1.95	1.08	0.71	0.52	0.036	5.83	2.23	0.11	4.43	1.33

This young powerhouse female is one we are hesitant to sell. She has been one to catch your eye in the pasture from a young age. She is deep-bodied with a substantial spring of rib and packed full of muscle while keeping a moderate frame and feminine eye appeal. She is power-packed and stacked genetically with some of the best in the breed. Her sire, MC Bedrock 541G20, has nine traits in the top 20% and six in the top 10%. Her dam, BWCC She's Fit 158F15 carries six traits in the top 10%. Both parents' top traits are WW, YW, REA, and IMF. This young female is a stand out in her own right hosting eight traits in the top 20% and six in the top 10%, with her own carcass traits, REA and IMF, being in the top 2% and top 3%, respectively. The upside potential for this heifer to bring calves to the weaning pen that will press the scales is tremendous. She sells halter broke.

187 AV MS BRONSON 468K

Born: 3/15/22 R10506773 Gen: 1 PHN: 468K Open Heifer AV Brangus

BWCC BRONSON 158E21
UB10383254

BWCC CROSS FIT 541B28
BWCC MS RESOURCE 158B4

MC CROSSOVER 834Y
MC MS LUCIA 541U
S A V RESOURCE 1441
BWCC MS JETHRO 158W
MC CROSSOVER 834Y
MC MS LUCIA 541U
MC ROCK STAR 924U6
MISS BRINKS CADENCE 468G15

BWCC SHE'S FIT 468E120
R10383141

BWCC CROSS FIT 541B28
BWCC MS ROCK STAR 468Y16

BW	WW	YW	REA	FT	IMF										
78 (99%)															
CED	BW	WW	YW	M	TM	CEM	SC	REA	IMF	FT	Hfr Prg	Stay	CowWt	TI	FI
0.5	2.5	45	71	3	26	3.98	1.19	0.73	0.61	0.019	4.56	1.72	9.73	4.6	0.66

At AV Brangus, we really like our 468 cow family and this one is no different. This young heifer is the natural calf of our elite donors. She is one that has great potential. She is moderate-framed, long-spined, heavy-boned, and thick middle, yet still maintains a feminine look. Not only is she phenotypically appealing, but she is also a genetic powerhouse. She has seven traits in the top 20% with five of those being in the top 10%. Her WW, REA, and IMF traits are in the top 2%. With her pedigree and phenotype, the potential is endless. She sells halter broke.



AV Ms Bronson 468K

188 WF MS BRICKHOUSE 535J

Born: 9/8/21 R10482160 Gen: 1 PHN: BH 535J Open Heifer Windlass Farm

SF BRICKHOUSE 909D9
R10321294

SUHN'S FOUNDATION 331Z28
SF MISS LTD 909Z4

GR SWIFT 209W3
SUHN'S MISS BT 331S43
LTD OF BRINKS 415T28
SF MISS ANGELO 909U4
CRC NORTH STAR 9U8W3
MS CRC NEXT STEP 535W10
S A V FINAL ANSWER 0035
MS CRC BT 535T6

MS CRC NORTH STAR 535C2
UB10292929

CRC NORTH STAR 535A84
MS CRC FINAL ANSWER 535A4

BW	WW	YW	REA	FT	IMF										
70 (100%)															
548 (100%)															
CED	BW	WW	YW	M	TM	CEM	SC	REA	IMF	FT	Hfr Prg	Stay	CowWt	TI	FI
3.5	1.2	44	80	4	26	3.98	0.9	0.54	0.24	0.01	4.98	1.09	6.33	4.11	0.11

Brickhouse daughters are doing an exceptional job as calf raisers due to their size and udder conformation. This feminine, and docile female boasts seven EPD traits in the top 20% including 10% WW, YW, CEM and IMF. She will be ready to breed to a bull of your choice this fall.

189 TTT MS XEROX 23J2

Born: 3/21/21 R10481703 Gen: 5 PHN: 23J2 Open Heifer TTT Ranches, LLC

OAKS XEROX 302C50
R10304564

CB FINAL CUT 924X
OAKS MS PATTON 302X2

MC REVELATION 129T
RBM MS GUNS 924T3
PATTON OF BRINKS 30722
MISS BRINKS GERONIMO 302H6
LEAD GUN OF BRINKS 222K14
MISS BRINKS UPPERCUT 30L18
BRIGHT SIDE OF BRINKS 789G5
SALACOA PINE LASS 23D2

D BAR D MS FAYE 23U4
R10142112

CSONKA OF BRINKS 30R4
SVF MS 23M2

BW	WW	YW	REA	FT	IMF										
75 (96%)															
527 (98%)															
778 (98%)															
9.22 (99%)															
0.11 (76%)															
3.34 (84%)															
CED	BW	WW	YW	M	TM	CEM	SC	REA	IMF	FT	Hfr Prg	Stay	CowWt	TI	FI
4.3	0.8	37	67	6	25	3.95	1.04	0.5	-0.12	-0.012	8.06	1.18	17.39	2.72	0

This Xerox daughter writes eight traits in the top 35% including top 15% for WW, 10% for YW, SC and REA. Growth and fertility! Take her home and breed her to a bull of your choice. Sells open.

190 B2K MS CORONADO 302J5

Born: 8/20/21 R10501521 Gen: 5 PHN: 302J5 Open Heifer B2K Farm

TJM CORONADO 535X
R10180470

CB HOMBRE 541T3
MS BRINKS LAMBERT 535T4

SUHN'S AFFIRMED 416N4
MS BRINKS BRIGHT SIDE 541K28
LAMBERT OF BRINKS 317R3
MS BRINKS CAPTAIN 535R39
DMR AFFIRMED 331U24
MS BRINKS BS 607L11 222S3
BRINKS BRIGHT SIDE 607L11
MISS JAK LEAD TIME 302N2

MS DMR ROLL TIDE 302C5
R10296862

DMR ROLL TIDE 222Z29
MS DMR 607L11 302W11

BW	WW	YW	REA	FT	IMF										
70 (100%)															
CED	BW	WW	YW	M	TM	CEM	SC	REA	IMF	FT	Hfr Prg	Stay	CowWt	TI	FI
6.3	0	24	46	12	24	1.71	-0.17	0.24	0	-0.011	3.18	0.55	-12	2.08	0.82

One of our top females from our 302C5 donor that we purchased from Clover Ranch. She is sired by the great Draggin' M Coronado bull. He is one of the top sires for BW, CED and Milk. She has seven EPD traits ranking in the top 35% of the breed.

191 B2K MS CROSSROADS 302J6

Born: 8/26/21 R10501522 Gen: 6 PHN: 302J6 Open Heifer B2K Farm

DMR CROSSROADS 795F7
R10416850

BWCC CROSS FIT 541B28
MS DMR CORONADO 795C5

MC CROSSOVER 834Y
MC MS LUCIA 541U
TJM CORONADO 535X
MS DMR JETHRO 795Y2
DMR AFFIRMED 331U24
MS BRINKS BS 607L11 222S3
BRINKS BRIGHT SIDE 607L11
MISS JAK LEAD TIME 302N2

MS DMR ROLL TIDE 302C5
R10296862

DMR ROLL TIDE 222Z29
MS DMR 607L11 302W11

BW	WW	YW	REA	FT	IMF										
72 (100%)															
CED	BW	WW	YW	M	TM	CEM	SC	REA	IMF	FT	Hfr Prg	Stay	CowWt	TI	FI
-0.3	3.8	40	75	7	27	3.2	0.87	0.49	0.09	-0.003	3.09	0.51	-6.39	3.29	0.45

One of our top females we produced last year. She is also out of our 302C5 donor we share with Clover Ranch. She is sired by the \$80,000 Crossroads bull. She has eight EPD traits in the top 30% of the breed including top 10% for WW, YW and REA.

192 *Flush Lot* From DS Farms



Ms Salacoa N Surrender 198G



DS Ms Empire 198J • Daughter of 198G Flush Selling

IVF Flush to Sire of Choice

Guaranteeing 10 viable IVF embryos – Purchaser's expense

After the overwhelming response to DS Ms Empire 198J who sold to Wiley Ranch for \$20,000 at the most recent Quail Valley Farms Elite Female Sale, we have decided to sell the option of an IVF flush to her dam, **Ms Salacoa N Surrender 198G**, to the sire of your choosing. She ranks in the top 1% of the breed for WW, YW and REA; top 2% for TM and Heifer Preg; top 10% Stay, top 15% SC, top 30% Milk and CEM. We flushed her one time and received 21 viable embryos. The 198J heifer had given 75 embryos before breeding age. We are excited about the future of this donor in our herd and her calves that will be hitting the ground this coming spring.

192 MS SALACOA N SURRENDER 198G

Born: 3/18/19 R10420579 Gen: 4 PHN: 198G Flush

NEVER SURRENDER OF SALACOA 803D9 R10318183	MC BOULDER 889Z14 MS BRINKS LOMBARDI 803S25	MC SOMETHING SPECIAL 129W14 MC MS EXTRAVAGANT 889X4 LOMBARDI OF BRINKS 468N10 MISS BRINKS KO 803J LTD OF BRINKS 415T28 MS BRINKS UNITAS 415U12 PATTON OF BRINKS 30T22 SVF CADENCE 198 U613
MS SALACOA WHISKEY 198B2 R10261124	WHISKEY OF RRR 415X5 MS SALACOA PATTON 198Z	

BW	WW	YW	REA	FT	IMF										
88 (112%)	577 (117%)	918 (117%)	11.24 (119%)	0.25 (103%)	3.66 (83%)										
CE	BW	WW	YW	M	TM	CEM	SC	REA	IMF	FT	Hfr Prg	Stay	CowWt	TI	FI
1.8	3.1	53	94	12	38	3.97	0.89	0.83	-0.15	0.006	10.55	2.22	6.67	3.84	1.34



DS Ms Empire 198J at 4 months old



193 A, B Embryo Lots From Vanna Farms

Here is a true opportunity to be on the cutting edge in genetics. **VF Ms International 889C2** is one of the leading donors at VF. Her sire is SAV International 2020 which is also sired BWCC Blackwater 000H9 the up in coming herd sire that sold for \$115,000. Her dam is BWCC Ms Tank 889T4 is the full sister the that great BWCC Nuff Said 889T50. Nuff Said is the sire of the hottest bull in the breed BWCC Big Town 192B16 that is pushing to being one of the all-time greatest bulls . . . Nuff Said

MC Blue Blood 192H18 is the high-selling bull at Mound Creek that was purchased by Wiley's and was syndicated between 10 breeders. The only way to get Blue Blood genetics is through embryos or daughters. **Blue Blood** has some of the best EPDs in the breed with 7 EPD traits in the top 15%.

BWCC Final Time 313H2 was the second high-selling bull at BWCC for 100k that was purchased by QVF. Final time sire is one of the hottest young herd sires BWCC McQueen 192E24 also the sire of the herd sires Papillon and Hugo. His dam is the great RBM Ms Special Forces 313A which is the highest selling Brangus female that we recently purchased with Truitt Brangus and River Bend Farms for \$120,000. She was also the dam of the MC Show Time 313H30 and many other herd sires and donors across the breed.

193 VF MS INTERNATIONAL 889C2

Born: 2/6/15 UB10297302 Gen: 1 PHN: 889C2 Embryo Lot

S A V INTERNATIONAL 2020
EA17318795

S A V HARVESTOR 0338
S A V EMBLYNETTE 5483

BWC MS TANK 889T4
R10096353

BRANGUS
GE-EPDS

MC JOHN WAYNE 165N3
MC MS EXTRAVAGANT 889P4

S A V HERITAGE 6295
S A V EMBLYNETTE 7749
S A V 8180 TRAVELER 004
S A V EMBLYNETTE 7260
TJM JOHN WAYNE 44L
MC MS NEWS MAN 165K
NICHOLS EXTRA H6
MC MS MADISON 889J6

BW	WW	YW	REA	FT	IMF												
78 lbs. (98%)	682 lbs. (103%)	900 lbs. (112%)	9.93 (105%)	0.3 (127%)	5.15 (110%)												
CED	BW	WW	YW	M	TM	CEM	SC	REA	IMF	FT	Hfr	Prg	Stay	Cow	Wt	TI	FI
0.8	1.1	40	67	6	26	2.99	0.49	0.39	0.33	0.008	11.99	2.51	-0.04	3.7	1.66		

Lot 193A • 1 package of 5 Embryos

313H2 x 889C2

Lot 193B • 1 package of 5 Embryos

129H18 x 889C2



193 BWCC FINAL TIME 313H2

Born: 1/15/20 R10451991 Gen: 1 PHN: 313H2 Embryo Lot

A
BWCC MCQUEEN 192E24
UB10359871

BWCC CROSS FIT 541B28
BWCC MS CHILL FACTOR 192A60

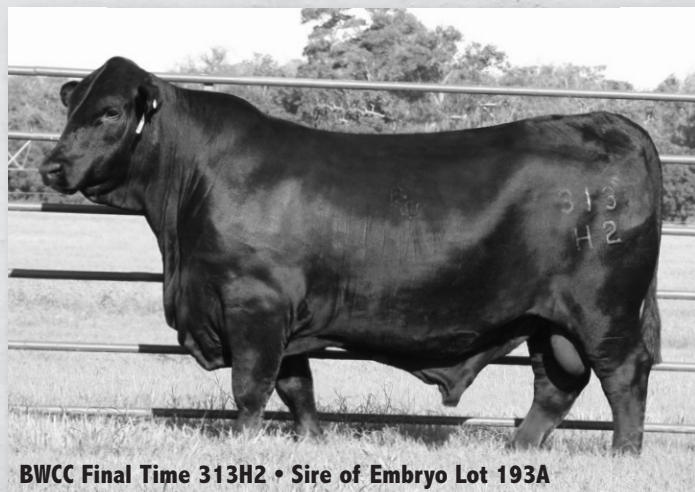
RBM MS SPECIAL FORCES 313A
R10265306

BRANGUS
GE-EPDS

MS SPECIAL FORCES 924Y4
RBM MS RITE DIRECTION 313X3

MC CROSSOVER 834Y
MC MS LUCIA 541U
S A V CHILL FACTOR 1418
MISS 4C LEAD GUN 192P4
MC SOMETHING SPECIAL 129W14
MISS NMSU 924
MC RIGHT DIRECTION 624R
RBM MS JOHN WAYNE 313R

BW	WW	YW	REA	FT	IMF												
53 lbs. (100%)	704 lbs. (100%)	1213 lbs. (100%)	15.69 (100%)	0.42 (100%)	6.63 (100%)												
CED	BW	WW	YW	M	TM	CEM	SC	REA	IMF	FT	Hfr	Prg	Stay	Cow	Wt	TI	FI
4.2	1.5	45	71	4	27	3.79	1.18	0.79	0.54	0.046	3.74	1.34	0.97	4.48	0.1		



193 MC BLUE BLOOD 129H18

Born: 11/26/20 UB10480215 Gen: 1 PHN: 129H18 Embryo Lot

B
BWCC BIG TOWN 192B16
R10266676

MC NUFF SAID 889T50
BWCC MS REVELATION 192W8

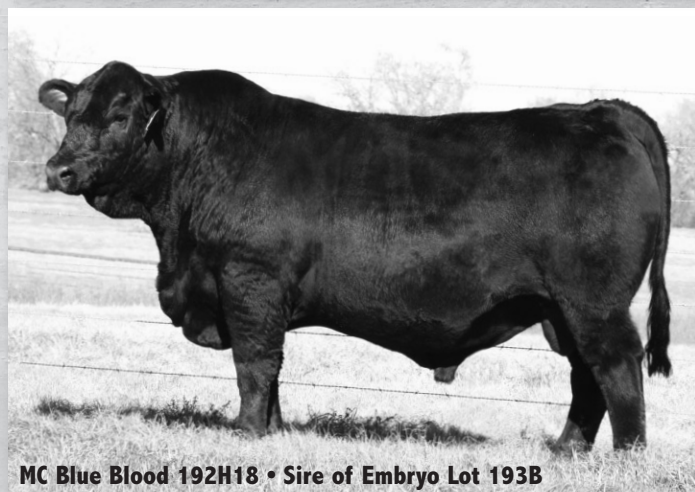
MC MS RESOURCE 129A15
UB10426566

BRANGUS
GE-EPDS

S A V RESOURCE 1441
MC MS GUNS 129Y327

MC JOHN WAYNE 165N3
MC MS EXTRAVAGANT 889P4
MC REVELATION 129T
MISS 4C LEAD GUN 192P4
RITO 707 OF IDEAL 3407 7075
S A V BLACKCAP MAY 4136
MC GUNS DONOVAN 124R
MC MS RAVEN 129U12

BW	WW	YW	REA	FT	IMF												
79 lbs. (100%)	644 lbs. (100%)	1179 lbs. (100%)	15.75 (100%)	0.25 (100%)	4.40 (100%)												
CED	BW	WW	YW	M	TM	CEM	SC	REA	IMF	FT	Hfr	Prg	Stay	Cow	Wt	TI	FI
3.7	0.7	39	71	12	31	0.53	0.98	0.94	0.22	0.024	11.89	2.5	1.76	3.99	1.45		



194 A, B Embryo Lots From Hartness Brangus

Lot 194A • 1 package of 5 Embryos 535G45 x 99H24

The \$9,500 Ms Salacoa N Surrender 99H24 donor purchased from Salacoa Valley Farms by Hartness Brangus at last year's Addison Performance Sale is one of Josh Brooks' favorite cows. She was conventionally flushed to DMR Kingdom 535G45.

194 DMR KINGDOM 535G45

Born: 8/22/19 R10434685 Gen: 5 PHN: 535G45 Embryo Lot

DMR EMPIRE 795D12
R10323531

TJM THREE D 302A
MS DMR JETHRO 795Y2

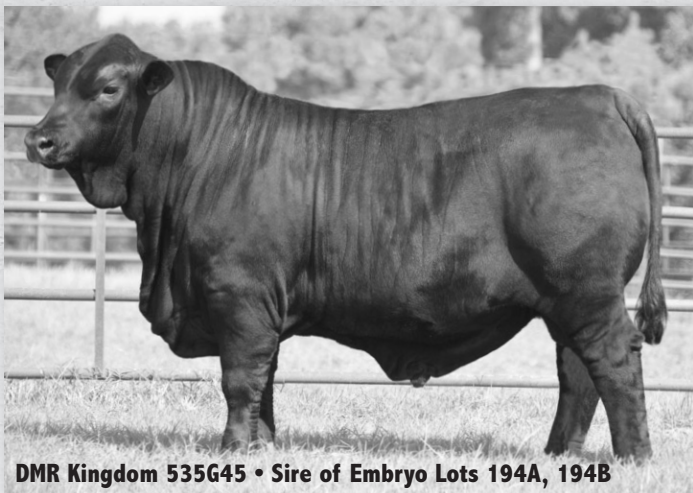
MS DMR CORONADO 535A8
R10254759

BRANGUS
GE-EPS

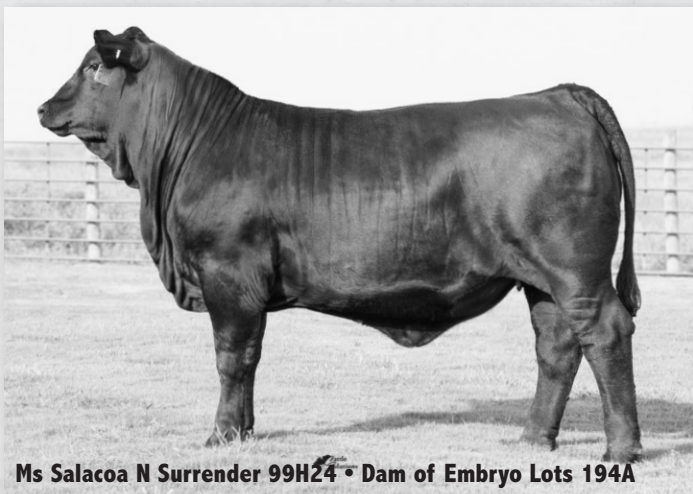
TJM CORONADO 535X
SVF MS 535M31

CB FINAL CUT 924X
OAKS MS PATTON 302X3
MC JETHRO 00S3
MS BRINKS UPPERCUT 795R9
CB HOMBRE 541T3
MS BRINKS LAMBERT 535T4
BRIGHT SIDE OF BRINKS 789G5
MS 38 CENTER RANCH 535/J8

BW	WW	YW	REA	FT	IMF											
78 lbs. (100%)	629 lbs. (100%)	1179 lbs. (100%)	13.30 (100%)	0.45 (100%)	4.17 (100%)											
CED	BW	WW	YW	M	TM	CEM	SC	REA	IMF	FT	Hfr	Prg	Stay	CowWt	TI	FI
8.5	-0.6	32	55	5	21	3	-0.09	0.42	-0.01	0.03	8.06	1.13	-1.3	2.41	-0.34	



DMR Kingdom 535G45 • Sire of Embryo Lots 194A, 194B



Ms Salacoa N Surrender 99H24 • Dam of Embryo Lots 194A

194 MS SALACOA N SURRENDER 99H24

Born: 10/4/20 R10460555 Gen: 4 PHN: 99H24 Embryo Lot

NEVER SURRENDER OF SALACOA 803D9
R10318183

MC BOULDER 889Z14
MS BRINKS LOMBARDI 803S25

MS SALACOA NEW VISION 99C2
R10287976

BRANGUS
GE-EPS

NEW VISION OF SALACOA 209Y2
SVF CADENCE 99 W063

MC SOMETHING SPECIAL 129W14
MC MS EXTRAVAGANT 889X4
LOMBARDI OF BRINKS 468N10
MISS BRINKS KO 803J
LAMBERT OF BRINKS 317R3
MS BRINKS BRIGHT SIDE 209L11
CADENCE OF BRINKS
SVF MS 99P6

BW	WW	YW	REA	FT	IMF											
93 lbs. (122%)	579 lbs. (112%)															
CED	BW	WW	YW	M	TM	CEM	SC	REA	IMF	FT	Hfr	Prg	Stay	CowWt	TI	FI
0.4	3.5	49	87	7	32	3.75	0.48	0.69	0.02	0.018	9.47	1.81	-12.15	3.76	1.33	

Lot 194B • 1 package of 3 Embryos 535G45 x 541X

The great donor VF Ms Rockstar 541X conventionally flushed to DMR Kingdom 535G45. VF Ms Rockstar 541X goes back to the great donor 541S4. The 541 cow family genetics are still making great prospects at Vanna Farms, Mound Creek, ACE and many other herds.

194 VF MS ROCKSTAR 541X

Born: 9/6/10 R10184703 Gen: 3 PHN: 541X Embryo Lot

MC ROCK STAR 924U6
R10123855

MC JETHRO 00S3
MISS NMSU 924

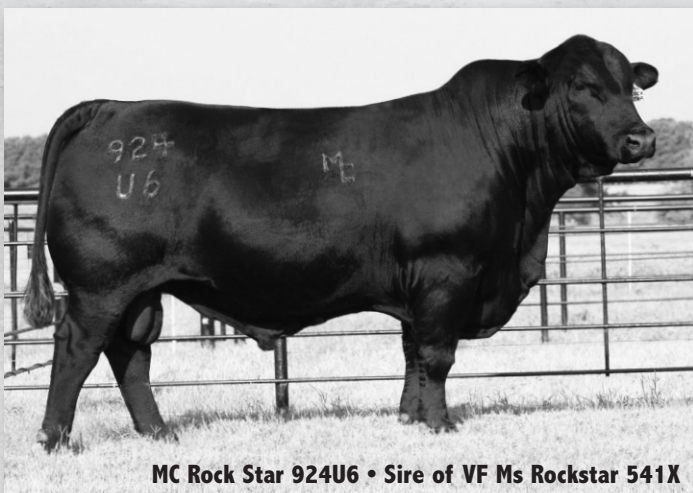
MC MS 661 JOHN WAYNE 541S4
R10043854

BRANGUS
GE-EPS

MC JOHN WAYNE 661N13
MISS BRINKS HEAVY DUTY 541E7

MC JOHN WAYNE 165N3
MC MS STOUT 00M5
NMSU 652
MISS NMSU 626
TJM JOHN WAYNE 44L
LER MS. NEW STAR 661F7
NICHOLS HEAVY DUTY X100
MISS BB BEVO 541M15

BW	WW	YW	REA	FT	IMF											
73 lbs. (99%)	594 lbs. (93%)	799 lbs. (98%)	9.31 (96%)	0.41 (169%)	3.48 (99%)											
CED	BW	WW	YW	M	TM	CEM	SC	REA	IMF	FT	Hfr	Prg	Stay	CowWt	TI	FI
-0.4	2.8	21	38	4	15	3.23	1.25	0.17	0.16	0.041	5.61	3.41	15.5	1.56	2.08	



MC Rock Star 924U6 • Sire of VF Ms Rockstar 541X

195 A, B Embryo Lots From Somers Valley Cattle Company

195 QVF PR EMPOWER 30G16

Born: 3/16/19 R10412716 Gen: 4 PHN: 30G16 Embryo Lot

A

NEVER SURRENDER OF SALACOA 803D9
R10318183

MC BOULDER 889Z14
MS BRINKS LOMBARDI 803S25

MC SOMETHING SPECIAL 129W14
MC MS EXTRAVAGANT 889X4
LOMBARDI OF BRINKS 468N10
MISS BRINKS KO 803J
CB FINAL CUT 924X
OAKS MS PATTON 302X3
ATLANTA OF SALACOA 488Z
MS BRINKS UNITAS 30T94

T3 MS THREE D 30D
R10337797

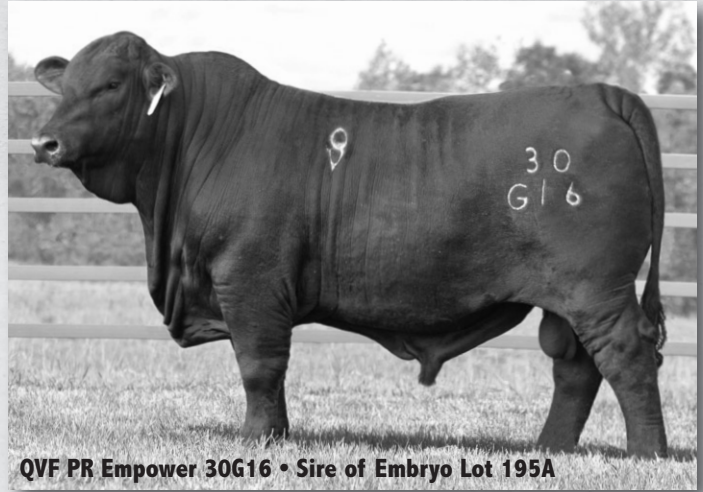
BRANGUS
GE-EPDS

TJM THREE D 302A
MS SALACOA ATLANTA 30B5

BW	WW	YW	REA	FT	IMF										
73 (100%)	562 (100%)	1348 (100%)	15.92 (100%)	0.33 (100%)	5.35 (100%)										
CED	BW	WW	YW	M	TM	CEM	SC	REA	IMF	FT	Hfr Prg	Stay	Cow Wt	TI	FI
-0.1	4.0	62	115	4	35	3.82	1.14	0.9	0.11	0.012	9.73	1.8	1.75	5.26	0.83

Lot 195A • 1 package of 6 IVF Embryos 30G16 X 331A66

QVF PR Empower 30G16 is the \$40,000 son of Never Surrender. He is not only an outstanding individual; he also offers top 1% EPDs in WW, YW, REA and an additional six traits in the top 20%. **CB Ms LTD 331A66** offers nine EPD traits of her own in the top 25% of the breed. This LTD daughter is clean made Three D outcross. Tons of potential in this mating.



QVF PR Empower 30G16 • Sire of Embryo Lot 195A

195 CB MS LTD 331A66

Born: 10/3/13 R10267787 Gen: 5 PHN: 331A66 Embryo Lot

A

LTD OF BRINKS 415T28
R10082892

CSONKA OF BRINKS 30R4
MS BRINKS BRIGHT SIDE 415P5

LEAD GUN OF BRINKS 222K14
MISS BRINKS UPPERCUT 30L18
BRIGHT SIDE OF BRINKS 789G5
MISS BB NEW BIG EASY 415E17
SUHN'S AFFIRMED 416N4
MS BRINKS BRIGHT SIDE 541K28
BACKSIDE OF BRINKS 14K5
SUHN'S MISS CADENCE 331L2

CB MS HOMBRE 331X64
R10191635

BRANGUS
GE-EPDS

CB HOMBRE 541T3
CB MS BKS 331T

BW	WW	YW	REA	FT	IMF										
72 (87%)	730 (112%)	956 (107%)	10.95 (104%)	0.34 (113%)	4.35 (102%)										
CED	BW	WW	YW	M	TM	CEM	SC	REA	IMF	FT	Hfr Prg	Stay	Cow Wt	TI	FI
4.2	1	32	58	10	26	3.24	1.23	0.39	0.21	0.023	5.75	0.08	-5.32	3.01	-0.8

195 GACC DATA BANK 102H3

Born: 3/6/20 UB10453285 Gen: 2 PHN: 102H3 Embryo Lot

B

SUHN'S TTT LM SIGNAL 30E13
UB10355471

TJM THREE D 302A
SCC MISS MYTTY 30Z5

CB FINAL CUT 924X
OAKS MS PATTON 302X3
MYTTY IN FOCUS
SUHN'S MS DUKE 30M
VF-OAKS ONLINE 918Y3
SUHN'S MISS NORTH STAR 30A
SQ CREDESCENCE 675
MGR BLACKCAP 8222

GACC MS BUSINESS LINE 102F3
UB10395578

BRANGUS
GE-EPDS

SUHN'S BUSINESS LINE 30D26
MGR BLACKCAP 1002

BW	WW	YW	REA	FT	IMF										
77 (102%)	631 (121%)	1207 (100%)	12.32 (100%)	0.34 (100%)	4.25 (100%)										
CED	BW	WW	YW	M	TM	CEM	SC	REA	IMF	FT	Hfr Prg	Stay	Cow Wt	TI	FI
7.8	-0.7	53	87	6	33	2.82	1.32	0.42	0.07	0.02	7.68	2.05	4.72	4.08	1.13

Lot 195B • 1 package of 6 IVF Embryos 102H3 X 415B

GACC Data Bank 102H3 was the \$52,000 high-selling bull at Chimney Rock Cattle Company Fall Sale. He is an EPD monster with 11 EPDs in top 25% highlighted by an awesome spread from CED and BW at birth to scale smashing stats at weaning and yearling. **CB Ms Chisholm 415B** is a powerful soggy R cow straight out of CRC's donor pen. Get on the front end of **Data Bank** calves; the result this pairing should create highly sought after UB2 calves.



GACC Data Bank 102H3 • Sire of Embryo Lot 195B

195 CB MS CHISHOLM 415B

Born: 2/21/14 R10267904 Gen: 5 PHN: 415B Embryo Lot

B

SUHN'S CHISHOLM 331W45
R10161215

TD OF BRINKS 415T28
SUHNS MISS AFFIRMED 331S34

CSONKA OF BRINKS 30R4
MS BRINKS BRIGHT SIDE 415P5
SUHN'S AFFIRMED 416N4
SUHN'S MISS CADENCE 331L2
SUNDANCE OF BRINKS 392G9
MISS BRINKS TROOPER 535F61
BRINKS BRIGHT SIDE 607L11
MISS BRINKS VAQUERO 415G

CB MS BLANDA 415X7
R10175242

BRANGUS
GE-EPDS

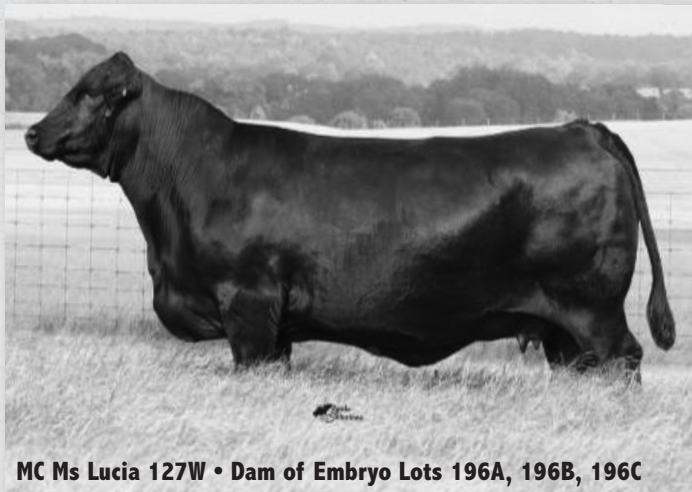
BLANDA OF BRINKS 535R54
MS BRINKS BRIGHT SIDE 415R23

BW	WW	YW	REA	FT	IMF										
84 (97%)	605 (103%)	795	8.34	0.21	3.98										
CED	BW	WW	YW	M	TM	CEM	SC	REA	IMF	FT	Hfr Prg	Stay	Cow Wt	TI	FI
2.8	1.9	21	38	10	21	3.18	1.2	0.14	0.14	0.005	5.26	0.29	-13.41	1.77	0.25

196 A, B, C Embryo Lots From 2 Oaks Brangus

Lot 196A • 1 package of 4 Embryos
Lot 196B • 1 package of 4 Embryos
Lot 196C • 1 package of 4 Embryos
 302A X 127W

The \$30,000 donor, **MC Ms Lucia 127W**, is one of the true power cows in the Brangus Breed. She is the dam of the \$40,000, MC Game Changer. She writes six EPD traits ranking in the breed's top 35% or greater led by top 5% IMF, 10% YW, SC and Terminal Index. These embryos are sired by the most influential bull of the last several years, **TJM Three D 302A**. This is the first time for this mating and should create some outstanding cattle to go in someone's herd.



MC Ms Lucia 127W • Dam of Embryo Lots 196A, 196B, 196C

196 MC MS LUCIA 127W

Born: 3/6/09 R10154538 Gen: 4 PHN: 127W Embryo Lot

LUKE OF BRINKS 784P4
R9694111

BLACKHAWK OF BRINKS 607M12

TRANSFORMER OF BRINKS
MISS BRINKS SUNDANCE 607K18
BEST BET OF BRINKS 535H38
MS BBCC HOTLINE 784D2
BIG EASY OF BRINKS 283Z
GLC MS CHAMP 4208/S
PW YUVAL DUKE 282/4
DRB MS REX 127/6

MISS BRINKS BEST BET 784K10

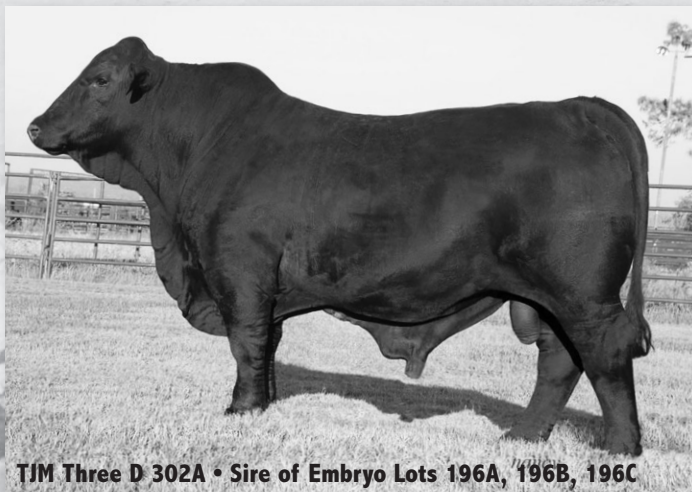
MC MS EASY MONEY 127K11
R763709

EASY MONEY 08D2

MC MS 282/4-127G

BRANGUS
GE-EPDS

BW	WW	YW	REA	FT	IMF												
90 lbs. (116%)	721 lbs. (102%)	1047 lbs. (110%)	13.61 (112%)	0.35 (111%)	6.75 (145%)												
CED	BW	WW	YW	M	TM	CEM	SC	REA	IMF	FT	Hfr	Prg	Stay	Cow	Wt	TI	FI
-1.3	3.5	31	72	6	22	3.73	1.02	0.21	0.42	0.005	3.51	0.75	-7.89	3.8	0.62		



TJM Three D 302A • Sire of Embryo Lots 196A, 196B, 196C

196 TJM THREE D 302A

Born: 2/2/13 R10244716 Gen: 5 PHN: 302A Embryo Lot

CB FINAL CUT 924X
R10168212

MC REVELATION 129T

MC NEW DIRECTION 000 M24
MB MS NIMITZ 129R
MC GUNS DONOVAN 124R
RBM MS 52 COOL HAND 924R
CONKA OF BRINKS 30R4
MS BRINKS ALI 30P26
GERONIMO OF BRINKS 392F15
MISS BB BRIGHT PROMISE 302E4

RBM MS GUNS 924T3

PATTON OF BRINKS 30T22

OAKS MS PATTON 302X3
R763709

MISS BRINKS GERONIMO 302H6

BRANGUS
GE-EPDS

BW	WW	YW	REA	FT	IMF												
83 lbs. (94%)	794 lbs. (112%)	1296 lbs. (104%)	15.82 (108%)	0.19 (72%)	3.88 (90%)												
CED	BW	WW	YW	M	TM	CEM	SC	REA	IMF	FT	Hfr	Prg	Stay	Cow	Wt	TI	FI
3.7	0.8	46	73	-1	21	2.89	0.57	0.36	-0.09	-0.006	11.05	1.19	13.97	2.86	-0.48		



197 Embryo Lot From J-1 Brangus

Lot 197 • 1 package of 3 Embryos 468G57 X 129H18

Here are three good embryos out of the high-selling \$90,000 **Perfect Fit** bull and out of a really solid Big Town daughter, **QVF Ms Big Town 129H18**. She goes back to the great MB Ms Yellowstone 129A2 cow. These embryos should combine for good growth, SC, REA, IMF, and Milk.

197 QVF MS BIG TOWN 129H18

Born: 10/13/20 R10462471 Gen: 4 PHN: 129H18 Embryo Lot

BWCC BIG TOWN 192B16
R10266676

MC NUFF SAID 889T50
BWCC MS REVELATION 192W8

MB MS YELLOWSTONE 129A2
R10324851

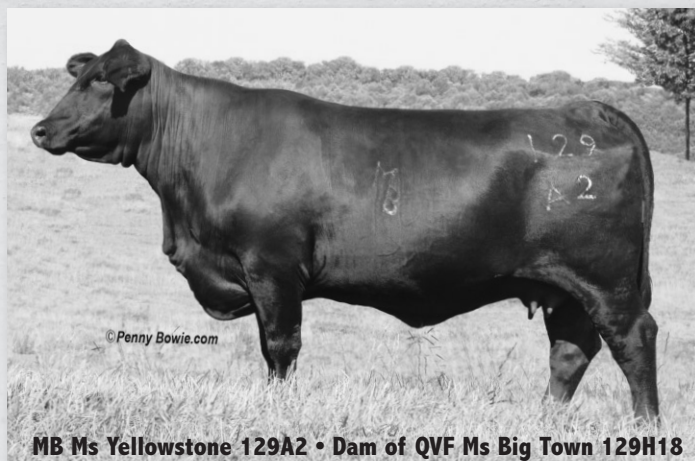
BRANGUS
GE-EPDS

MC JOHN WAYNE 165N3
MC MS EXTRAVAGANT 889P4
MC REVELATION 129T
MISS 4C LEAD GUN 192P4
MC JETHRO 0053
MB MS NEW DIRECTION 17R5
NIMITZ OF BRINKS 75L12
MB MS NEWS MAN 129P

BW	WW	YW	REA	FT	IMF											
(100%)	529 (100%)	813 (100%)	10.22 (100%)	0.23 (100%)	4.84 (100%)											
CED	BW	WW	YW	M	TM	CEM	SC	REA	IMF	FT	Hfr	Prg	Stay	CowWt	TI	FI
3.5	1.2	36	66	16	34	2.03	0.85	0.63	0.26	0.028	9.58	1.32	3.17	3.68	0.03	



BWCC Big Town 192B16 • Sire of QVF Ms Big Town 129H18



MB Ms Yellowstone 129A2 • Dam of QVF Ms Big Town 129H18



Perfect Fit of Salacoa 468G57 • Sire of Embryo Lot 197

197 PERFECT FIT OF SALACOA 468G57

Born: 9/21/19 R10437568 Gen: 5 PHN: 468G57 Embryo Lot

BWCC CROSS FIT 541B28
R10293331

MC CROSSOVER 834Y
MC MS LUCIA 541U

MS BRINKS NEW ERA 468P22
R9685459

BRANGUS
GE-EPDS

LAMBERT OF BRINKS 317R3
MC MS GUNS 834W3
LUKE OF BRINKS 784P14
MC MS QUIET LADY 541S2
KO OF BRINKS 392F10
MISS BRINKS MILKY WAY 541E4
CADENCE OF BRINKS
MISS BB NEW MACHO 468C

BW	WW	YW	REA	FT	IMF											
82 lbs. (100%)	728 lbs. (100%)	1227 lbs. (100%)	15.64 (100%)	0.25 (100%)	5.48 (100%)											
CED	BW	WW	YW	M	TM	CEM	SC	REA	IMF	FT	Hfr	Prg	Stay	CowWt	TI	FI
1.2	1.0	39	66	5	24	4.59	1.53	0.75	0.31	0.006	6.22	1.99	9.63	3.81	1.25	

198 A, B Semen Lots From Vanna Farms and Whitley Cattle Company

Here is an exciting young herd sire is the most recent addition to our herd bull battery. He is the \$35,000 **BWCC Black Top 192G22** and the second high selling bull at the fall Blackwater sale. Thick made and impressively designed he is blessed with a perfectly blended EPD profile ranking in the breed's top 35% or greater for 10 traits led by top 5% WW and Terminal Index, 10% YW, REA and IMF, 25% CED and top 35% Milk. His blend of economically relevant traits make him can't miss in the genetics world of Brangus. **Selling 2 Lots of 5 straws of semen.**



198 BWCC BLACK TOP 192G22

Born: 9/24/2019 R10444674 Gen: 1 PHN: 192G22 Semen

BWCC MILE MARKER 889E32
R10359796

BWCC CROSS FIT 541B28

MC CROSSOVER 834Y

BWCC MS NUFF SAID 889Z24

MC MS LUCIA 541U

MC NUFF SAID 889T50

MC MS 5175 BANDO 889P12

MC ELEGIDO 924W6

BWCC MS LEAD GUN 889W26

S A V BRAND NAME 9115

CCC MS NEWSMAKER 192J12

BWCC MS CRUISE 192B62
UB10293158



BWCC CRUISE 889Z28

BWCC MS BRAND NAME 192Z46

BW	WW	YW	REA	FT	IMF											
98 lbs. (100%)	847 lbs. (100%)	1207 lbs. (100%)	15.53 (100%)	0.44 (100%)	5.75 (100%)											
CED	BW	WW	YW	M	TM	CEM	SC	REA	IMF	FT	Hfr	Prg	Stay	CowWt	TI	FI
5.2	0.9	27	49	8	21	2.18	-0.07	0.58	0.47	0.041	1.55	1.51	1.96	3.3	0.4	

199 A, B Semen Lots From Hartness Brangus

BWCC Chiseled 468G58 is a Cross Fit son and his granddam is the great 468Y14 donor. Many have identified her as Rock Star's greatest daughter. His dam is BWCC Statement 468B32, a full sister sold to Far Niente for \$13,000 and a maternal sib for \$13,500 in last June's Quail Valley Farms Sale. He writes six traits ranking in the breed's top 105 paced by top 2% WW, 5% YW, 4% SC, 10% IMF and Terminal Index with top 15% REA and top 35% Fertility Index. He is one of Cross Fit's finest sons with the maternal power to back him up. **Selling 2 Lots of 5 straws of semen.**



199 BWCC CHISELED 468G58

Born: 9/27/2019 R10434380 Gen: 5 PHN: 468G58 Semen

BWCC CROSS FIT 541B28
R10293331

MC CROSSOVER 834Y

LAMBERT OF BRINKS 317R3

MC MS LUCIA 541U

MC MS GUNS 834W3

LUKE OF BRINKS 784P14

MC MS QUIET LADY 541S2

BWCC MS STATEMENT 468B32
R10293362



BWCC STATEMENT 036Z

MC REDEMPTION 192W22

MS IRON FARM 2K4 036U

MC ROCK STAR 924U6

MISS BRINKS CADENCE 468G15

BWCC MS ROCK STAR 468Y14

BW	WW	YW	REA	FT	IMF											
82 lbs. (100%)	811 lbs. (100%)	1247 lbs. (100%)	15.5 (100%)	0.46 (100%)	5.84 (100%)											
CED	BW	WW	YW	M	TM	CEM	SC	REA	IMF	FT	Hfr	Prg	Stay	CowWt	TI	FI
1	3	53	86	2	29	3.1	1.47	0.63	0.45	0.009	3.57	1.57	6.65	4.72	0.93	



200 A, B Embryo Lots From MNR Cattle

This is a unique opportunity and one we didn't plan on offering. In 2019 we purchased **ABF Defender 535D** in the Addison Brangus Sale. We felt she was the cow we were looking for to be the ultimate powerhouse female to produce Ultrablack calves to introduce new Angus genetics and make first-generation Brangus just more powerful. Defender is structural as sound as she can be, she is deep-bodied and moderate in frame in comparison to most Brangus, yet she is big-footed and big-boned. We bred her to **Werner Flat Top 4136** with hopes of producing a female that would be a game changer, we achieved that with MNR Ms Lizzo 535H our UB1 heifer that placed 7th in the IBBA points series last year with having only attended 3 of the 7 points series shows. Lizzo has had a phenomenal past year she took Reserve Sr Heifer Calf at the Houston Livestock Show and Rodeo, 2021 Southeast Regional Jr Brangus Show she won Grand Champion Ultrablack Female, Reserve Champion Overall Ultra Heifer at the South Florida Fair, Sr Heifer Calf Champion at the National Jr Brangus Show, Champion Ultrablack Female at Kissimmee Valley Livestock Show, Reserve Champion Ultrablack Heifer at the Florida State Fair. We had cash offers that we would sell any other animal in our herd without a second thought, yet we have retained ownership of this female because her best days are ahead. Lizzo's actual weaning weight was 644 lbs and yearling weight was 985 lbs. Lizzo's docility has also led her 10-year-old Jr to the backdrop many times over as her showmanship heifer who works with her like none before.

The second option is to the mating we have on the ground right now and with ET calves. **Defender to Square B True North**, we feel the **True North** calves are as good as Lizzo and have huge potential. This mating doesn't have an extensive show history as the calves are just now being weaned but we feel next year they will have the success Lizzo has had. This is an opportunity we do not plan on offering again.



ABF Ms Defender 535D

Lot 200A • 1 package of 3 Embryos Werner Flat Top 4136 X 535D

Lot 200B • 1 package of 3 Embryos Square B True North 8052 X 535D

200 ABF MS DEFENDER 535D

Born: 2/27/16 R10318575 Gen: 5 PHN: 535D Bred Heifer Addison Brangus Farms

DMR DEFENDER 594A20
R10254773

CRC GUARDIAN 9U8U5

WR MS DUKE 59457

ABF MS PATTON 535B
R10258687

PATTON OF BRINKS 30T22

L&W MS NUFF SAID 685Z

CSONKA OF BRINKS 30R4
MISS 4L BEST BET 9U8P5
WR DUKE 228/F
WR MS TRANSFORMER VI 594N3
CSONKA OF BRINKS 30R4
MS BRINKS ALI 30P26
MC NUFF SAID 889T50
SVF CATAWBA 535 T685

BW	WW	YW	REA	IMF	FT										
89 (108%)	584 (89%)	913 (101%)	11.1 (101%)	2.015 (76%)	0.17 (96%)										
CED	BW	WW	YW	M	TM	CEM	SC	REA	IMF	FT	Hfr Prg	Stay	Cow Wt	TI	FI
-2.4	3.7	34	58	6	23	3.13	0.72	0.54	0.04	-0.022	4.84	1.85	-0.69	2.54	2.15

200 WERNER FLAT TOP 4136

Born: 9/7/14 AAA *18094501 PHN: 4136

A
CONNEALY BLACK GRANITE
AAA #*17028963

CONNEALY CONSENSUS 7229

EURA ELGA OF CONANGA 9109

WERNER LADY 0304
AAA #*16919376

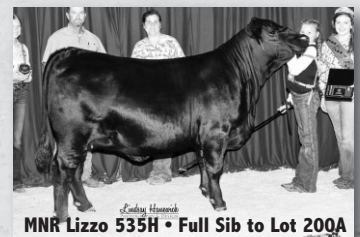
C R A BEXTOR 872 5205 608

SANDPOINT LADY 7869

CED	BW	WW	YW	M	TM	CEM	SC	REA	Marb	FT
16	-2.0	55	113	10	37	11	0.35	0.67	0.76	-0.008
\$AxH	\$AxJ	\$M	\$W	\$F	\$G	\$B	\$C			
124	88	56	69	81	60	142	240			



Werner Flat Top 4136 • Sire of Embryo Lot 200A



MNR Lizzo 535H • Full Sib to Lot 200A

200 SQUARE B TRUE NORTH 8052

Born: 8/16/18 AAA *19405246 PHN: 8052

B
S A V RAINFALL 6846
AAA #*18578963

COLEMAN CHARLO 0256

S A V BLACKCAP MAY 4136

ELBANNA OF CONANGA 1209
AAA 17029025

CONNEALY CONSENSUS

ELBASTA OF CONANGA 9703

CED	BW	WW	YW	M	TM	CEM	SC	REA	Marb	FT
16	-2.2	53	106	10	31	12	1.4	0.55	0.96	0.045
\$AxH	\$AxJ	\$M	\$W	\$F	\$G	\$B	\$C			
134	98	87	61	62	64	126	250			



Square B True North 8052 • Sire of Embryo Lot 200B



ABF Ms Defender 535D



Daughter of 535D

COMMERCIAL FEMALE OFFERING

We are proud of this set of Commercial females. All females selling are sired by or exposed to an Addison Brangus Bull. In the future, anyone buying an Addison Brangus Farms bull will be eligible to participate in the commercial or registered section of these future sales. As always we strive to add value for your purchases.

1 Commercial Pair **Consigned by Ealum Cattle Company** **Lot 201**

Super Baldy Pair. Tag number: 201 *Exposed to Addison Brangus Farms Brangus bull.*

2 Commercial Pairs **Consigned by Stinson Brangus** **Lots 202, 203**

Commercial Pair. Tag numbers: 202, 203 *Exposed to Addison Brangus Farms Brangus bulls.*

3 Open Yearling Commercial Heifers **Consigned by Addison Brangus Farms** **Lots 204-206**

Multi-generational Brangus heifers sired by ABF Chattooga C149G. Tag numbers: 204-206

3 Bred Commercial Heifers **Consigned by K & K Farms** **Lots 207-209**

Commercial Angus x Hereford. Tag numbers: 207-209
Bred to Ultrablack bull, ABF Black Granite C115H. Due to calve this fall. Some could be pairs by sale day.

4 Spring Bred Commercial Heifers **Consigned by Addison Brangus Farms** **Lots 210-213**

Multi-generational Commercial Brangus heifers sired by ABF Final Cut 134F4. Tag numbers: 210-213
Pasture exposed to ABF Black Bullet 468J from 5/21/22 to 7/31/22.

2 Spring Bred Commercial Heifers **Consigned by Quinn Cattle Company** **Lots 214, 215**

Taste of the South... Angus, Ultrablack, and Sim/Brangus cross. Safe to ABF Black Granite 23D5. Tag numbers: 215, 215
AI'd to ABF Black Granite 23D5, R1033005 on 5/22/22. Pasture exposed to TTT Brickhouse 468F from 6/3/22 to 7/11/22. Vet palpated, PI & BVD tested.

23 Spring Bred Commercial Heifers **Consigned by Stinson Brangus** **Lots 217-239**

Commercial Super Baldy heifers. Tag numbers: 217-239 *Bred to Addison Brangus Farms Brangus bulls.*

14 Spring Bred Commercial Heifers **Consigned by Ealum Cattle Company** **Lots 240-253**

Commercial Super Baldy heifers. Tag numbers: 240-253 *Bred to Low Birth Weight Addison Brangus Farms Brangus bulls.*

15 Spring Bred Commercial Heifers **Consigned by John Norris** **Lots 286-300**

Commercial Sim/Angus and Brangus bred heifers. Nine of these heifers will be 6-7 months bred. The other six will be five months bred or less. This nice set of heifers will calve as two-year-olds. Tag numbers: 286-300 *Pasture exposed to ABF Rudder 23F3, R10383285 from 3/14/22 to 8/15/22.*

Semen Available from Addison Brangus Farms



Blackstone

Contact
Wayne Addison at
(205) 412-5356
for semen on these two
ABF AI Sires!



Black Granite



ABF BLACKSTONE 23G2

Born: 2/13/19 R10410461 Gen: 4 BWCC Monument 10D7 x QCB Ms Nuff Said 23Z12

CED	BW	WW	YW	M	TM	CEM	SC	REA	IMF	FT	Hfr	Prq	Stay	CowWt	TI	FI
5.4	-0.3	36	60	10	28	2.85	1.1	0.41	0.25	0.033	6.93	1.93	-9.76	3.29	1.47	



ABF BLACK GRANITE 23D5

Born: 9/4/16 R10333005 Gen: 1 MC Granite 834B x SVF Ms 535P9

CED	BW	WW	YW	M	TM	CEM	SC	REA	IMF	FT	Hfr	Prq	Stay	CowWt	TI	FI
4.3	0.0	26	52	6	20	3.6	0.91	0.38	-0.02	0.031	3.43	1.52	-6.42	2.19	1.01	

TERMS AND CONDITIONS

BIDDING

Each animal will be sold to the highest bidder without reserve. The auctioneer will settle any disputes as to bids and his decision on such matters shall be final.

TERMS

Each animal becomes the risk of the purchaser as soon as sold, but it shall be the obligation of the seller to see that animals are fed and cared for until loaded for shipment or until the expiration of 48 hours after the sale, whichever occurs sooner. After 48 hours a maintenance fee of \$5 per day will be assessed until pickup, unless ABF arranges shipment.

SIGHT UNSEEN PURCHASES

Buyers may purchase through Wayne Addison at auction without viewing the cattle. For sight unseen purchases, the buyer has the right of inspection at the time of delivery. If the animal is deemed unsatisfactory, it may be reloaded on the delivery truck and returned to the farm of the seller at no obligation to the buyer. All transportation expenses will be the responsibility of the seller. If the animal is deemed unsatisfactory within one week of the purchase, the buyer may at their expense, return the animal to the farm of the seller for a full refund of the purchase price.

CERTIFICATE OF REGISTRY

A transferred certificate of registry will be furnished to the purchaser for each registered animal once proper settlement has been made.

HEALTH

Health papers suitable for interstate shipment will be furnished on all animals.

GENETIC CONDITIONS

Unless otherwise noted, all cattle selling are DDF either through testing or pedigree. Any DDC or DDPC cattle are so noted.

ANNOUNCEMENTS

Any changes from the information of any kind in this catalog will be provided in a sale day supplement sheet or announced from the auction block and such information shall take precedence over cataloged information.

BREEDING GUARANTEE

1. All animals are guaranteed to be breeders with the exception of: a) calves under 12 months of age; b) animals shown by purchaser after sale in which the guarantee (if any) shall be between the seller and the buyer; c) injury or disease occurring after the sale; d) gross negligence or willful misconduct on the part of the purchaser; e) death by any reason.
2. Any bull which settles cows by natural service and passes a fertility test made by competent veterinarians, mutually agreed upon by the buyer and seller, during any six month period of trial (provided for in paragraph 2 of the section of these sales terms and conditions entitled "Options and Privileges of Return or Adjustment") shall be considered a breeder. All partial interest bulls are guaranteed to produce freezable quality semen.

3. Safe in calf females have been examined by competent personnel and are so guaranteed.

4. Exposed females have been exposed but are not guaranteed to be safe in calf.

5. Open females have not been served and are so guaranteed.

6. Donor Females. a) A female is not guaranteed to be a breeder after the date of the sale when that female is to be used or attempted to be used, in an embryo transfer program, unless by separate agreement between the buyer and seller. b) Embryo transfer guarantee. Even though it is possible some of the female lots have worked successfully in our embryo transfer program in the past, and should in the future, there is no guarantee or warranty on future embryo production of any lot. Flush records are available upon request.

PREGNANCY DETERMINATION

The registered females in this sale noted safe in calf have been determined pregnant by physical palpation or ultrasound technology. Our best estimate of service sire will be given in the case of the females with both an A.I. sire and a natural breeding sire. Keep in mind this is our best estimate.

OPTIONS AND PRIVILEGES OF RETURN OR ADJUSTMENT

1. All claims for adjustment or refund must be made in writing within six months of the sale date.

2. In the event an animal is claimed to be a non-breeder, the animal may be returned to the farm of the breeder if in good condition and complying with the health requirements of their state. The seller shall be entitled to a six month trial following the return of the animal in which to prove that the animal is a breeder. If at the end of six months the seller is unable to prove the animal is a breeder, the seller shall at the option of the buyer replace the animal with another of equal value or issue a credit for the initial selling price. If the seller proves the animal to be a breeder, it shall be the obligation of the purchaser to take delivery of the animal and pay all expenses incurred for transportation.

3. If an animal is sold and at a later date proves not to be eligible for registration under association rules, the seller shall be obligated to make a satisfactory adjustment on the purchase price to the buyer, refund the purchase price or issue a credit for the initial selling price upon the return of the animal to the farm of the seller.

4. If an animal is sold and through DNA is proven to have incorrect parentage as represented by the certificate of registration, and for which the parentage can be determined, the seller shall be obligated to make a satisfactory adjustment on the purchase price to the buyer, refund the purchase price or issue a credit for the initial selling price upon the return of the animal to the farm of the seller.

RIGHTS AND OBLIGATIONS

1. The above terms and conditions of sale shall constitute a contract between the buyer and seller of each animal and shall be equally binding on both. Other than the guarantees and warranties stated above, no other warranties or guarantees are expressed or implied. Each sale or resale of an animal constitutes a separate transaction.

2. Addison Brangus Farms or any other person connected with the management of the sale assumes no liability, legal or otherwise.





ADDISON BRANGUS FARMS
Wayne & Leisa Addison
1043 County Highway 130
Winfield, Alabama 35594
AddisonBrangusFarms.com

Presorted
First Class
US Postage
PAID
SlateGroup



ADDISON BRANGUS FARMS AND FRIENDS PERFORMANCE SALE

Saturday, October 8, 2022 ♦ 11 am CST
Cullman Stockyard ♦ Cullman, Alabama

