

ADDISON BRANGUS FARMS AND FRIENDS PERFORMANCE SALE

SATURDAY, OCTOBER 14, 2023 • 10 AM CST

CULLMAN STOCKYARD ~ CULLMAN, ALABAMA



Featuring The True Performance Cattle of the Southeast

2022 PERFORMANCE SALE

Around the Barn



Addison Brangus Farms

PERFORMANCE SALE

Leisa and I would like to welcome everyone to the 2023 Addison Brangus Farms and Friends Fifth Annual "Performance" Sale.

We are very excited to host our fifth annual sale! The Brangus and Ultrablack cattle in this sale represent our commitment, along with our sale partners' commitments, to the breed's most elite EPDs and superior performance cattle. We offer distinguished genetics and first-rate quality throughout the sale order.

First and foremost, we at Addison Brangus Farms wish to thank our Heavenly Father for allowing us to be where we are today. Our God has truly blessed us immeasurably, and we give Him all the glory. (Ephesians 5:20)

Secondly, we want to express our sincerest gratitude to our outstanding sale partners who have labored diligently in preparing their animals for this event. We could not be here without you. The cattle in this sale represent numerous farms and ranches located widely over the Southeast.

Also, we would like to express our genuine appreciation to all of the following for their immense help with our sale: Catalog Coordinator, Lea Weinheimer; Sale Manager, Chris Heptinstall; Auctioneer, Doak Lambert; Cattle Solutions, Kyle Devoll; Wade and Blaine Fisher and the staff at IDEAL Video Productions; Ringmen, Jimmy Fetner, Tim Dietrich and Michael Sturgess; and last but not least, Hoagie and Callahan Parish and their crew at the Cullman Stockyard.



WAYNE & LEISA ADDISON



In conclusion, the "Performance" Sale is offering a comprehensive variety of Brangus and Ultrablack cattle. These cattle include open and bred heifers, bred cows, cow/calf pairs, 3-N-1's, donor prospects, embryo lots, and show animal prospects. Also, following the registered sale, we will have our open and bred commercial heifer sale. Many of these commercial heifers will be sired by, exposed to, or AI'd to an Addison Brangus Farms bull.

The Addison Brangus Farms and Friends "Performance" Sale offers something for everyone. Please allow us to assist you in your cattle program.

Sincerely,

Wayne & Leisa

Wayne and Leisa

Wayne and Leisa Addison
(205) 412-5356

Addison Brangus Farms

PERFORMANCE SALE

Saturday, October 14, 2023 • 10 am CST

Cullman Stockyard, Cullman, Alabama

Hosted by Addison Brangus Farms



ADDISON BRANGUS FARMS

Wayne & Leisa Addison • (205) 412-5356
1043 County Highway 130
Winfield, Alabama 35594
AddisonBrangusFarms.com
addisonbrangusfarms@yahoo.com

Sale Manager

Chris Heptinstall
Premier Livestock Services
(205) 363-0919
chris@premierlivestockservices.com



Auctioneer

Doak Lambert • (972) 839-6485
License #908

Sale Location

Cullman Stockyard
75 County Road 1339
Cullman, Alabama 35058
Located just 5 minutes east of
Interstate 65 Exit 310 in Cullman.

Accommodations

Hampton Inn • (256) 739-4444
6100 Alabama Highway 157 • Cullman, Alabama

Holiday Inn Express • (256) 736-1906
2052 Hayes Drive NW • Cullman Alabama

Comfort Suites • (256) 255-5999
2048 St Joseph Dr NW • Cullman, Alabama

La Quinta Inn & Suites • (256) 775-9500
2054 St. Joseph Dr. NW • Cullman, Alabama

Publications Represented

Southern Livestock Standard – Michael Sturgess
Special Assignment – Jimmy Fetner
Special Assignment – Tim Dietrich
Brangus Journal • *Alabama Cattleman*
Cattle Business in Mississippi

Catalog Production

The Horseshoe Group • Lea Weinheimer • (210) 872-2727

Air Transportation

Birmingham-Shuttlesworth International Airport

Trucking

Contact Wayne Addison at (205) 412-5336 regarding trucking.

Load Out

Cattle may be loaded out during or after the sale and after proper settlement is made.

Health Papers

Health papers will be provided on each lot in the sale suitable for interstate shipment.

Terms and Conditions

Refer to page 46.

Sale Broadcast Live on DVAuction

Refer to page 42 for more information.

This sale will be broadcast live on the internet.

DVAuction
Broadcasting Real-Time Auctions
Real time bidding & proxy bidding available.

SCHEDULE

FRIDAY, OCTOBER 13

12 Noon Cattle available for viewing
Cullman Stockyard

SATURDAY, OCTOBER 14

8 AM Coffee Available
8 AM Cattle available for viewing
10 AM **The Performance Sale**, Cullman Stockyard

SALE SITE

Cullman Stockyard • (256) 734-4531
Hoagie Parish • Callahan Parish
75 County Road 1339
Cullman, Alabama 35058

Easily accessed from
I-65 & Highway 157

PLEASE BRING THIS CATALOG WITH YOU SALE DAY!

Welcome

Welcome to the Addison and Friends "Performance" Sale

I WOULD LIKE TO BEGIN BY GIVING A HEARTFELT THANK YOU TO WAYNE AND LEISA FOR ALLOWING ME TO ASSIST WITH THIS YEAR'S SALE. It's been a pleasure working with the Addison family and the friends who participate in this offering of quality Brangus™ and Ultrablack genetics. In this catalog, you will find some of the best quality from the best breeders in the Southeast.

It was an interesting observation as I was penning this catalog as to how much breeders have paid attention to the genomic profiles of their animals. Strategic breeding plans are working, and breeders are covering your convenience traits in addition to strong end user focus coupled with fertility. You will find as you peruse the offering many animals with genomic profiles ranking them well above average in weaning weight, post yearling gain, ribeye area, intramuscular fat, heifer pregnancy, stayability, and breed back. This tells me we, as breeders, are using these GE-EPDs as a tool in our breeding decisions and these are trending into highly accurate numbers.



As many of you know, the International Brangus Breeders Association and the International Brangus Breeders Foundation are currently conducting a research project called "Brangus Value Project" which is proving what we already thought but couldn't publish because we had no sound science behind the hypothesis, Brangus™ cattle are efficient, feed, and perform well in the feedyards. This research is going to give the foundation and association the backbone to tell our story and give us meaningful data to publish our "Marbling EPD". This along with many feed efficiency trials conducted by private ranchers and shared with IBBA will propel Brangus™ in the marketplace. To say we are pleased to share this news is a gross understatement.

I have been involved at committee level, board level, and presided over our association over the past ten years and the commitment and dedication to propel and prove this breed of cattle has been gratifying. Thank you as breeders and customers for your hard work and dedication.

Wayne, Leisa, and I would like to invite you to Cullman, Alabama on Saturday, October 14, 2023 to participate in what we consider to be the best offering of live cattle, frozen genetics, and flushes we have ever offered. If you have any questions about the offering, please reach out to us via a phone call, text, or email. We will be more than happy to assist you to our greatest ability.

~Don't be afraid to go where the data takes you~

Chris

Christopher G. Heptinstall
Premier Livestock Services

(205) 363-0919, cell
chris@premierlivestockservices.com



CONSIGNORS

ADDISON BRANGUS FARMS

Wayne & Leisa Addison
(205) 412-5356
Winfield, Alabama
Lots 113, 113A, 114, 114A, 115,
120, 128, 131, 132, 144, 146, 161,
179, 180, 181, 188, 189, 243-245

AMERICAN CATTLE ENTERPRISES (ACE)

Trey Kirkpatrick, (979) 324-5518
Effie, Louisiana, Blountsville,
Alabama, Fairmount, Georgia
Lots 167, 170

BLACK OAK CATTLE COMPANY

Darryl Traylor, (256) 717-8108
Rainsville, Alabama
Lots 147, 162, 256

BOOT HILL FARMS

Jamie Dykes, (334) 695-5865
Louisville, Alabama
Lots 127, 130, 151, 152, 154, 155,
157, 158, 159, 160, 178, 190, 211

CEDAR JUNCTION BRANGUS

Chris Shelton
John Wooten, (662) 983-8024
Bruce, Mississippi
Lots 246-255

COLD CREEK RANCH

Tom, Betty, and Sean Davis
(404) 406-1428
Butler, Georgia
Lots 213, 215

CONE CATTLE COMPANY

Justin Cone, (904) 509-4436
Baldwin, Florida
Lot 191

CHAD COTTON

(205) 412-6694
Brilliant, Alabama
Lots 305-325

CROSS N FARM

Randy & Samantha Nugent
(318) 729-5681 Olla, Louisiana
Lots 209, 210

DOUBLE H FARMS

Dennis Hardin, (423) 619-0775
Pikeville, Tennessee
Lots 201, 202

DOUBLE J FARMS

Joe Johnson, (334) 726-4154
Headland, Alabama
Lot 212

J. B. DYER

(205) 331-9585
Gordo, Alabama
Lots 228-242

EAST RIDGE CATTLE

Geoffrey Lingerfelt
(256) 996-7141
Ft. Payne, Alabama
Lots 107, 107A, 118, 119, 141, 214

EC BRANGUS, LLC

Evon & Carol Crooks
(336) 817-6890
Mocksville, North Carolina
Lots 121, 156, 303

GALLOWAY BRANGUS FARM

Larry Galloway, (256) 603-1945
Lance Galloway, (256) 924-5571
Huntsville, Alabama
Lots 122, 138, 198

GOLD CREEK BRANGUS

Oskar Juarez, (404) 557-2620
Marietta, Georgia
Lot 182

G&R BRANGUS

Larry Galloway, (256) 603-1945
David Roadruck (256) 582-1950
Lots 193

HARTNESS BRANGUS

Steve Hartness, (423) 426-4028
Greenville, Tennessee
Lots 101, 101A, 104, 104A, 133,
134, 135, 194, 195, 199

HIGH ROCK FARM

David & Christa Walker
(256) 264-5556
Horton, Alabama
Lots 217-227

JACKSON FARMS

Justin Jackson, (423) 322-2457
Pikeville, Tennessee
Lots 150, 173

JRT BRANGUS

Jeff Thomas, (770) 289-6539
Cumming, Georgia
Lots 103, 103A, 105, 105A, 116,
148, 149, 163

K&K FARMS

Keith Dyer, (205) 367-7603
Gordo, Alabama
Lots 228-242

LAS PALOMAS RANCH

Jose Medina, (678) 384-9447
Marietta, Georgia
Lots 106, 106A, 117, 126, 216, 123

LETO FARMS

Frank Johnston, (334) 304-0342
Montgomery, Alabama
Lots 140, 177

L&W CATTLE COMPANY

Doug & Glenda Williams
(336) 745-5252, cell
Mocksville, North Carolina
Lots 102, 102A

LYKINS FARMS

Denver & Peggy Lykins
(606) 316-0982
Olive Hill, Kentucky
Lots 175, 176, 184, 185, 197, 302

MAGNOLIA CREEK BRANGUS

Paul Necaize, (228) 304-7523
Kiln, Mississippi
Lots 136, 153

MCCRACKIN FARMS

Jordan McCrackin, (205) 535-5964
Gordo, Alabama
Lots 282-286

PINE KNOT CATTLE CO.

Jeremy and Hayley Sessoms
(336) 408-8174
Bennett, North Carolina
Lots 137, 172, 299

M QUICK FARMS

Mike Quick, (256) 843-9400
Arab, Alabama
Lots 125, 124, 183

RIVER BEND FARMS

David Chadwick, (334) 349-1969
Tyler, Alabama
Lots 108, 108A, 109, 109A, 110,
110A, 111, 111A, 112, 112A, 142, 171

SADDLE HILL CATTLE CO.

John & Nicole Holley
(334) 447-6685
Elba, Alabama
Lots 145, 166

SEWELL CATTLE COMPANY INC.

Gary & Kristi Sewell, Owners
Isaiah Dark, Manager
(318) 475-2638
El Dorado, Arkansas
Lot 169

STEWART BRANGUS

Cliff & Judy Stewart
(256) 366-0718
Leighton, Alabama
Lot 301

STINSON BRANGUS FARMS

Alvin & Debbie Stinson
(904) 607-5610
Georgiana, Alabama
Lots 257-281

SUNSHINE ACRES BRANGUS

Jamey Reynolds, (256) 452-2240
Piedmont, Alabama
Lot 205

3G CATTLE

Casy George, (618) 924-0330
Dongola, Illinois
Lot 205

3 SOUTH FARMS

Billy & Chandler South
(662) 891-5360
Fulton, Mississippi
Lots 165, 192, 217

TRUITT BRANGUS FARMS

Brian Truitt, (334) 319-3210
Auburn, Alabama
Lot 164

TTT RANCHES, LLC

Jimmy Trice & Family
(205) 270-6488
Fayette, Alabama
Lots 187, 203, 204

2 KEYS BRANGUS

Maria Bochicchio
(214) 492-9583
Hamilton, Texas
Lot 200

VANNA FARMS

Lee McGarity, (706) 498-7695
Royston, Georgia
Lots 143, 164, 174, 129, 207, 208

WINDLASS FARMS, LLC

Mike & Rachel Cocchiaro
(512) 745-4795
Hillsborough, North Carolina
Lots 196, 304

Spring Three-in-Ones

101 VF MS CRUISE 000H9

Born: 3/20/20 UB10438531 Gen: 2 PHN: 000H9

From Hartness Brangus

BWCC CRUISE 323D3
UB10349309

BWCC CRUISE 889Z28
BWCC MS ROCK SOLID 323B

MC ELEGIDO 924W6
BWCC MS LEAD GUN 889W26
S A V ROCK SOLID 2251
BWCC MS ROCK STAR 323X2
S A V HARVESTOR 0338
S A V EMBLYNETTE 5483
MC JOHN WAYNE 661N13
MC MS FOREFRONT 000N2

VF MS INTERNATIONAL 000D16
UB10329511

S A V INTERNATIONAL 2020
MC MS QUIET LADY 000S50

BW	WW	YW	REA	FT	IMF										
68 (94%)	589 (91%)	733 (90%)	10.71 (96%)	0.52 (110%)	4.58 (118%)										
CED	BW	WW	YW	M	TM	CEM	SC	REA	IMF	FT	Hfr Prq	Stay	Cow Wt	TI	FI
1.1	1.6	30	49	4	19	4.38	0.22	0.38	0.24	0.023	9.58	2.82	1.61	2.58	3.63
85%	80%	20%	30%	90%	55%	30%	80%	15%	15%	95%	2%	3%	70%	25%	10%

Here is a BWCC Cruise 323D3 out of the famous 000 cow family, going back to MC Ms Quiet Lady 000S50 who has been so influential in the Vanna Farms herd. She's a power cow with ample carcass and maternal attributes. Pay attention to her 2% HP, 3% Stay and 10% Fert and BB.

Breeding: Pasture exposed to QVF PR Empower 30G16, R10412716 from 6/17/23 to 8/1/23.

101A HH MS CHISELED 000L7

Born: 4/3/23 UB10537889 Gen: 1 PHN: 000L7

Heifer Calf From Hartness Brangus

BWCC CHISELED 468G58
R10434380

BWCC CROSS FIT 541B28
BWCC MS STATEMENT 468B32

VF MS CRUISE 000H9
UB10438531

BWCC CRUISE 323D3
VF MS INTERNATIONAL 000D16

MC CROSSOVER 834Y
MC MS LUCIA 541U
BWCC STATEMENT 036Z
BWCC MS ROCK STAR 468Y14
BWCC CRUISE 889Z28
BWCC MS ROCK SOLID 323B
S A V INTERNATIONAL 2020
MC MS QUIET LADY 000S50

BW	WW	YW	REA	FT	IMF										
71 (95%)															
CED	BW	WW	YW	M	TM	CEM	SC	REA	IMF	FT	Hfr Prq	Stay	Cow Wt	TI	FI
1.2	2.1	39	63	2	21	3.8	0.72	0.46	0.30	0.015	7.04	2.31	3.34		
85%	90%	10%	10%	95%	40%	45%	25%	10%	10%	85%	10%	10%	75%		

102 L&W MS BEACON 33J

Born: 2/3/21 R10483929 Gen: 1 PHN: 33J

From L & W Cattle Co.

WCC BEACON 331F2-ET
R10417110

SUHN'S MAJESTIK BEACON 30C
MS DMR CORONADO 331C3

TJM THREE D 302A
SCC MISS MYTTY 30Z5
TJM CORONADO 535X
MS CRC AFFIRMED 331U31
SUHN'S CHISHOLM 331W45
CALLAWAYS RITA 1531
CCC 94 NEWS DAY 857L1
DS MS NEWSMAKER 33/M1

L&W UB MS CHISHOLM 33C
UB10307726

CB CHISHOLM 1531Z
CNF MISS LYNN 33P

BW	WW	YW	REA	FT	IMF										
79 (108%)	605 (107%)		6.0 (71%)	0.09 (44%)	2.87 (81%)										
CED	BW	WW	YW	M	TM	CEM	SC	REA	IMF	FT	Hfr Prq	Stay	Cow Wt	TI	FI
2.6	1.3	25	32	7	19	3.16	0.49	-0.25	-0.01	-0.01	4.47	1.06	0.72	0.98	2.64
70%	75%	35%	70%	70%	55%	65%	50%	>95%	70%	10%	30%	40%	65%	80%	35%

Beacon breeding on the top and Chisholm on the bottom. Check out the bull calf at side, sired by a Never Surrender of Salacoa 803D9 son out of the \$30,000 selection by Todd and Amy Edwards in the 2017 Salacoa Valley Sale.

Breeding: Pasture exposed to QVF Never Surrender 468J73, R10492503 from 5/1/23 to sale day.

102A L&W MR NEVER SURRENDER 33L

Born: 4/12/23 R10532596 Gen: 2 PHN: 33L

From L & W Cattle Co.

QVF NEVER SURRENDER 392J2
R10466402

NEVER SURRENDER OF SALACOA 803D9
OAKS MS ONLINE 392D8

L&W MS BEACON 33J
R10483929

WCC BEACON 331F2-ET
L&W UB MS CHISHOLM 33C

MC BOULDER 889Z14
MS BRINKS LOMBARDI 803S25
VF-OAKS ONLINE 918Y3
OAKS MS PASSPORT 392B2
SUHN'S MAJESTIK BEACON 30C
MS DMR CORONADO 331C3
CB CHISHOLM 1531Z
CNF MISS LYNN 33P

BW	WW	YW	REA	FT	IMF										
82 (100%)															
CED	BW	WW	YW	M	TM	CEM	SC	REA	IMF	FT	Hfr Prq	Stay	Cow Wt	TI	FI
3.6	1.4	30	49	5	20	0.8	0.11	-0.03	0.001	5.49	1.38	2.52	1.86	2.64	
60%	75%	30%	40%	80%	50%	25%	65%	80%	45%	25%	35%	70%	55%	35%	



L&W Ms Beacon 33J and L&W Mr Never Surrender 33L

Spring Three-in-Ones



JRT Ms Eldorado 406E3

103 JRT MS ELDORADO 406E3

Born: 12/23/17 R10378603 Gen: 6 PHN: 406E3

From JRT Brangus

DMR ELDORADO 30B15
R10284830

TJM CORONADO 535X
SUHN'S MISS PATTON 30X6

CB HOMBRE 541T3
MS BRINKS LAMBERT 535T4
PATTON OF BRINKS 30T22
SUHN'S MS DUKE 30M
TJM JOHN WAYNE 44L
MB MS FREIGHT LINER 541K
GARRETT OF BRINKS 789P
ELC MS LEAD GUN 406T2

ELC MS REAL DEAL 406A
R10248615

BRANGLS
GE-EPDS

MC REAL DEAL 541R3
ELC MS GARRETT 406W

BW	WW	YW	REA	FT	IMF																										
76 (107%)	625 (113%)	864 (100%)	8.23 (98%)	0.13 (117%)	1.68 (66%)																										
CED	BW	WW	YW	M	TM	CEM	SC	REA	IMF	FT	Hfr	Prg	Stay	Cow	Wt	TI	FI														
1.1	1.9	38	67	4	23	2.05	1.2	0.15	-0.02	-0.006	6.14	1.01	-0.02	2.64	2.47	85%	85%	10%	10%	90%	30%	90%	3%	50%	70%	20%	15%	40%	60%	25%	40%

She is a powerful Eldorado daughter standing on plenty of bone. She posts 10 EPDs breed average or better led by top 3% SC, 10% WW and YW, 15% heifer pregnancy, and top 20% terminal. We are retaining a Dynamic heifer out of her that will be going into our donor pen. She's that good! 406E3 has a great calving interval with a great disposition and sells with an outstanding Dynamic bull calf at side. Year after year she brings one of the top calves to the weaning pen. She sells safe in calf to either her AI sire Growth Fund or our exciting new herd sire Payback who we own with our good friends at TTT.

Breeding: AI'd to CB Growth Fund 2051G11, UB10418754 on 5/8/23. Pasture exposed to TTT JRT Payback 541J34, UB10497456 from 5/21/23 to 7/22/23.



DMR JRT Dynamic 30G36 ~ Sire of Lots 103A, 147, 156

103A JRT DYNAMIC 406L

Born: 4/4/23 R10534276 Gen: 6 PHN: 406L

From JRT Brangus

DMR JRT DYNAMIC 30G36
R10434661

DMR EMPIRE 795D12
MS DMR CHAIRMAN 30C2

TJM THREE D 302A
MS DMR JETHRO 795Y2
DMR THE CHAIRMAN 415A11
SUHN'S MISS PATTON 30X6
TJM CORONADO 535X
SUHN'S MISS PATTON 30X6
MC REAL DEAL 541R3
ELC MS GARRETT 406W

JRT MS ELDORADO 406E3
R10378603

DMR ELDORADO 30B15
ELC MS REAL DEAL 406A

BW	WW	YW	REA	FT	IMF																										
78 (95%)																															
CED	BW	WW	YW	M	TM	CEM	SC	REA	IMF	FT	Hfr	Prg	Stay	Cow	Wt	TI	FI														
4.7	0.7	40	65	2	23	2.43	1.13	0.3	-0.05	0.014	7.52	1.26	0	2.61	2.16	50%	60%	10%	15%	95%	35%	85%	10%	35%	85%	80%	10%	40%	55%	30%	55%

He is a powerful Dynamic son who posts 6 EPDs in the top 35%. Dynamic was our \$45,000 selection from the 2020 CDP sale.



Spring Three-in-Ones

104 VF MS PROFIT 541F

Born: 9/10/18 R10408844 Gen: 4 PHN: 541F

From Hartness Brangus

MC PROFIT 924B16
R10276882

MC CROSSOVER 834Y
RBM MS JETHRO 924U2

LAMBERT OF BRINKS 317R3
MC MS GUNS 834W3
MC JETHRO 00S3
MISS NMSU 924
MC JETHRO 00S3
MISS NMSU 924
MC JOHN WAYNE 661N13
MISS BRINKS HEAVY DUTY 541E7

VF MS ROCKSTAR 541X
R10184703

MC ROCK STAR 924U6
MC MS 661 JOHN WAYNE 541S4

BW	WW	YW	REA	FT	IMF										
76 (97%)	627 (102%)	804 (101%)	9.23 (103%)	0.3 (137%)	4.15 (99%)										
CED	BW	WW	YW	M	TM	CEM	SC	REA	IMF	FT	Hfr Prg	Stay	Cow Wt	TI	FI
0.3	2.2	32	44	2	18	2.37	1.2	0.19	0.04	0.019	8.56	2.75	6.54	1.72	3.64
90%	90%	15%	40%	95%	60%	85%	3%	45%	50%	90%	4%	3%	90%	50%	10%

An MC Profit 924B16 out of the 541 tribe only two generations away from the Heavy Duty x 541 flush that has influenced the story of the 541s. Being extreme only in balance with added maternal with 4% HP, 3% STAY, and 10% Fert and BB.

Breeding: Pasture exposed to BWCC Milestone 158H2, UB1041980 from 6/9/23 to 6/17/23 and to QVF PR Empower 30G16, R10412716 from 6/17/23 to 8/1/23.



JRT Miss America 99E2

104A HH MS CHISELED 541L

Born: 4/27/23 R10537894 Gen: 5 PHN: 541L Bull Calf

From Hartness Brangus

BWCC CHISELED 468G58
R10434380

BWCC CROSS FIT 541B28
BWCC MS STATEMENT 468B32

MC CROSSOVER 834Y
MC MS LUCIA 541U
BWCC STATEMENT 036Z
BWCC MS ROCK STAR 468Y14
MC CROSSOVER 834Y
RBM MS JETHRO 924U2
MC ROCK STAR 924U6
MC MS 661 JOHN WAYNE 541S4

VF MS PROFIT 541F
R10408844

MC PROFIT 924B16
VF MS ROCKSTAR 541X

BW	WW	YW	REA	FT	IMF										
71 (95%)															
CED	BW	WW	YW	M	TM	CEM	SC	REA	IMF	FT	Hfr Prg	Stay	Cow Wt	TI	FI
0.8	2.4	40	61	1	21	2.8	1.21	0.36	0.20	0.013	6.53	2.28	5.80		
90%	95%	10%	20%	>95%	45%	75%	10%	25%	25%	75%	15%	15%	85%		

105 JRT MISS AMERICA 99E2

Born: 3/3/17 R10343958 Gen: 6 PHN: 99E2

From JRT Brangus

AMERICUS OF SALACOA 468Y16
R10204914

HANNIBAL OF BRINKS 784T6
MS BRINKS NEW ERA 468P27

CSONKA OF BRINKS 30R4
MS BRINKS GOOD FORTUNE 784N9
NEW ERA OF BRINKS 541J37
MISS BRINKS CADENCE 468G15
LAMBERT OF BRINKS 317R3
MS SVF CADENCE 488X11
DDD UC-GENTLEMAN 804S21
SVF MS 99R19

MS SALACOA ATLANTA 99B11
R10273295

ATLANTA OF SALACOA 488Z
MS SVF GENTLEMAN 99X7

BW	WW	YW	REA	FT	IMF										
82 (117%)	703 (100%)	884 (100%)	13.04 (100%)	0.27 (100%)	4.2 (100%)										
CED	BW	WW	YW	M	TM	CEM	SC	REA	IMF	FT	Hfr Prg	Stay	Cow Wt	TI	FI
4.7	-1.2	25	49	13	25	3.66	0.33	0.45	0	0.004	6.33	1.58	-7.32	2.47	3.33
40%	10%	35%	30%	20%	25%	50%	65%	10%	65%	60%	15%	25%	20%	25%	15%

She is a super balanced female with a great udder sired by Americus out of the great 99B11 that sold to Oskar Juarez for \$6,000 at the 2020 Addison sale. She is a very feminine female with great fertility. We are retaining a super nice Eldorado daughter in our herd. 99E2 boasts 13 EPDs in the top 35% led by top 10% BW and Rea, 15% fertility, 20% stay, 25% milk and TM, and 30% YW. If you're looking for proven performance look no further by proof of her bull calf at side sired by DMR Eldorado 30B15. She sells safe in calf to Eldorado.

Breeding: Pasture exposed to DMR Eldorado 30B15, R10284830 from 5/21/23 to 7/23/23. Safe.



DMR Eldorado 30B15 ~ Sire of Lots 103, 105A, 117, 149

105A JRT ELDORADO 99L

Born: 4/28/23 R10534278 Gen: 6 PHN: 99L Bull Calf

From JRT Brangus

DMR ELDORADO 30B15
R10284830

TJM CORONADO 535X
SUHN'S MISS PATTON 30X6

CB HOMBRE 541T3
MS BRINKS LAMBERT 535T4
PATTON OF BRINKS 30T22
SUHN'S MS DUKE 30M
HANNIBAL OF BRINKS 784T6
MS BRINKS NEW ERA 468P27
ATLANTA OF SALACOA 488Z
MS SVF GENTLEMAN 99X7

JRT MISS AMERICA 99E2
R10343958

AMERICUS OF SALACOA 468Y16
MS SALACOA ATLANTA 99B11

BW	WW	YW	REA	FT	IMF										
82 (100%)															
CED	BW	WW	YW	M	TM	CEM	SC	REA	IMF	FT	Hfr Prg	Stay	Cow Wt	TI	FI
7.2	-1.2	25	44	2	15	3.56	0.56	0.24	0.08	0	6.41	1.32	-6.84	2.24	2.85
20%	15%	45%	50%	95%	75%	50%	45%	45%	45%	40%	15%	35%	25%	45%	30%

This young herd sire prospect is sired by Eldorado. He is a calving ease specialist with plenty of growth. He posts 13 EPDs breed average or better.

Spring Three-in-Ones

106 CLVR MS CSONKA 99D16

Born: 11/2/16 R10335798 Gen: 6 PHN: 99D16 From Las Palomas Ranch

CSONKA OF BRINKS 30R4
R10004209

LEAD GUN OF BRINKS 222K14
MISS BRINKS UPPERCUT 30L18

CADENCE OF BRINKS
MISS BB NEW BIG EASY 222E55
UPPERCUT OF BRINKS 14J8
MISS BRINKS SUNDANCE 30J32
LAMBERT OF BRINKS 317R3
MS BRINKS BRIGHT SIDE 209L11
PATTON OF BRINKS 30T22
MS BRINKS NIMITZ 99P52

CLVR MS NEW VISION 99A11
R10251463

NEW VISION OF SALACOA 209Y2
101 MS PATTON 99X9

BW	WW	YW	REA	FT	IMF										
80 (109%)	502 (106%)	889 (102%)	10.08 (98%)	0.36 (131%)	5.08 (121%)										
CED	BW	WW	YW	M	TM	CEM	SC	REA	IMF	FT	Hfr Prq	Stay	Cow Wt	TI	FI
2.8	1.6	28	50	7	22	2.49	0.85	0.28	0.25	0.007	7.69	0.5	-6.7	2.72	1.68
70%	80%	25%	30%	70%	35%	85%	15%	30%	15%	70%	10%	60%	25%	20%	75%

She's a sixth-generation Brangus who is royally bred. Being an own daughter of the legendary Csonka of Brinks 30R4 and out of a New Vision of Salacoa 209Y2 x 101 Ms Patton 99X9. There's no telling how many dollars have been generated out of the 99X9 cow. Note her 15% SC and IMF, 10% HP. You can't go wrong with tried and true genetics.

Breeding: AI'd to DMR Cash Flow 535F30, UB10386538 on 5/19/23.

106A LP MS DOMAIN 99L

Born: 3/22/23 R10527906 Gen: 6 PHN: 99L Heifer Calf From Las Palomas Ranch

DMR DOMAIN 415G35
R10422132

DMR EMPIRE 795D12
MS DMR CORONADO 415A7

TJM THREE D 302A
MS DMR JETHRO 795Y2
TJM CORONADO 535X
MS BRINKS BRIGHT SIDE 415R23
LEAD GUN OF BRINKS 222K14
MISS BRINKS UPPERCUT 30L18
NEW VISION OF SALACOA 209Y2
101 MS PATTON 99X9

CLVR MS CSONKA 99D16
R10335798

CSONKA OF BRINKS 30R4
CLVR MS NEW VISION 99A11

BW	WW	YW	REA	FT	IMF										
84 (89%)															
CED	BW	WW	YW	M	TM	CEM	SC	REA	IMF	FT	Hfr Prq	Stay	Cow Wt	TI	FI
5.9	0.4	26	47	7	20	3.74	0.64	0.22	0.11	0.008	7.49	0.76	-5.82	2.27	1.91
30%	45%	30%	35%	70%	45%	45%	35%	40%	35%	70%	10%	50%	25%	35%	65%

107 HRF MS BRUISER 99H62

Born: 3/1/20 UB10433625 Gen: 1 PHN: 99H62 From East Ridge Cattle

S A V BRUISER 9164
EA16396531

S A V BISMARK 5682
S A V MISS BOBBIE 7463

G A R GRID MAKER
S A V ABIGALE 0451
S A V 004 PREDOMINANT 4438
S A V MISS BOBBIE 4177
CSONKA OF BRINKS 30R4
MS BRINKS LOMBARDI 222S20
DITKA OF BRINKS 535N37
MS BRINKS SUNDANCE 99P12

HRF MS STONEWALL 99D2
R10322137

STONEWALL OF RRR 222W6
MS BRINKS DITKA 99S28

BW	WW	YW	REA	FT	IMF										
76 (103%)	483 (102%)	800 (104%)	9.3 (95%)	0.18 (86%)	3.33 (101%)										
CED	BW	WW	YW	M	TM	CEM	SC	REA	IMF	FT	Hfr Prq	Stay	Cow Wt	TI	FI
5.8	-0.6	30	61	2	17	3.99	0.41	0.34	0.14	-0.003	5.47	1.87	-10.01	3.12	3.84
30%	20%	20%	15%	95%	65%	40%	60%	20%	30%	35%	20%	15%	15%	15%	4%

Balanced EPDs. She's out of a Good Stonewall cow and and sired by SAV Bruiser. She has 11 Traits in the top 25%.

Breeding: Pasture exposed to ERC Oracle 541J2, R10466232 and to ERC Oracle 541J4, R10466141 from 1/31/23 to 7/31/23. Safe in calf.

107A ERC MS XEROX 99L2

Born: 5/21/23 UB10534779 Gen: 1 PHN: 99L2 Heifer Calf From East Ridge Cattle

LM XEROX 468G5
R10413181

OAKS XEROX 302C50
BLACK X MS OUTBACK 468E5

CB FINAL CUT 924X
OAKS MS PATTON 302X2
BXR/KCC OUTBACK 1302A13
BLACK X MS BASIN 468C
S A V BISMARK 5682
S A V MISS BOBBIE 7463
STONEWALL OF RRR 222W6
MS BRINKS DITKA 99S28

HRF MS BRUISER 99H62
UB10433625

S A V BRUISER 9164
HRF MS STONEWALL 99D2

BW	WW	YW	REA	FT	IMF										
71 (93%)															
CED	BW	WW	YW	M	TM	CEM	SC	REA	IMF	FT	Hfr Prq	Stay	Cow Wt	TI	FI
9.4	-2.1	26	49	5	18	4.09	0.73	0.27	0	-0.004	6.8	1.43	-1.38	2.39	2.92
5%	4%	30%	30%	85%	60%	35%	25%	30%	65%	30%	10%	30%	50%	30%	25%

108 WCC MS CORONADO 331F

Born: 3/3/18 R10377133 Gen: 5 PHN: 331F From River Bend Farms

L&W MR CORONADO 2386B2
R10264775

TJM CORONADO 535X
L&W MS NUFF SAID 2386Z7

CB HOMBRE 541T3
MS BRINKS LAMBERT 535T4
MC NUFF SAID 889T50
WCC MS TALLADAGA 2386W5
CB FINAL CUT 924X
OAKS MS PATTON 302X3
VF-OAKS ONLINE 918Y3
SUHN'S MISS CSONKA 331X14

SUHN'S MISS THREE D 331D19
R10325017

TJM THREE D 302A
SUHN'S MISS ONLINE 331A15

BW	WW	YW	REA	FT	IMF										
64 (90%)	534 (87%)														
CED	BW	WW	YW	M	TM	CEM	SC	REA	IMF	FT	Hfr Prq	Stay	Cow Wt	TI	FI
7.4	-0.7	23	47	6	18	3.66	0.3	0.21	0.05	-0.004	6.03	0.98	0.63	2.26	2.22
15%	20%	40%	35%	75%	60%	50%	70%	40%	50%	30%	15%	45%	65%	35%	50%

Coronado breeding out of a Three D who has much influence throughout the breed. She's got a bull calf sired by the Black Top bull and bred back the same way.

Breeding: Pasture exposed to BWCC Black Top 192G22, R10444674 from 5/15/23 to 8/7/23.

108A RBF 192G22 BLACK TOP 331L

Born: 3/31/23 R10531674 Gen: 2 PHN: 331L Bull Calf From River Bend Farms

BWCC BLACK TOP 192G22
R10444674

BWCC MILE MARKER 889E32
BWCC MS CRUISE 192B62

BWCC CROSS FIT 541B28
BWCC MS NUFF SAID 889Z24
BWCC CRUISE 889Z28
BWCC MS BRAND NAME 192Z46
TJM CORONADO 535X
L&W MS NUFF SAID 2386Z7
TJM THREE D 302A
SUHN'S MISS ONLINE 331A15

WCC MS CORONADO 331F
R10377133

L&W MR CORONADO 2386B2
SUHN'S MISS THREE D 331D19

BW	WW	YW	REA	FT	IMF										
68 (102%)															
CED	BW	WW	YW	M	TM	CEM	SC	REA	IMF	FT	Hfr Prq	Stay	Cow Wt	TI	FI
5.7	0.4	24	46	5	18	0.16	0.37	0.21	0.017	0.017	3.75	1.23	1.06	2.54	2.21
35%	50%	45%	45%	80%	60%	%	85%	25%	25%	85%	40%	40%	60%	35%	55%

Spring Three-in-Ones



Ms BC Rolltide 263C11 ~ Dam of Lot 109

109 MS BC LA PURCHASE 263G13

Born: 4/12/19 R10409143 Gen: 5 PHN: 263G13 From River Bend Farms

DMR LOUISIANA PURCHASE 924D10
R10323539

TJM THREE D 302A
RBM MS JETHRO 924W5

MS BC ROLLTIDE 263C11
R10298770

DMR ROLL TIDE 222Z29
MS CRC CSONKA 263U3

BRANGL'S
GE-EPDS

CB FINAL CUT 924X
OAKS MS PATTON 302X3
MC JETHRO 0053
MISS NMSU 924
DMR AFFIRMED 331U24
MS BRINKS BS 607L11 22253
CSONKA OF BRINKS 30R4
MS HD BRIGHT SIDE 263L

BW	WW	YW	REA	FT	IMF										
83 (105%)	587 (123%)	862 (100%)	11.87 (100%)	0.54 (100%)	3.62 (100%)										
CED	BW	WW	YW	M	TM	CEM	SC	REA	IMF	FT	Hfr Prg	Stay	Cow Wt	TI	FI
0.5	2.3	39	62	8	28	1.95	0.86	0.29	-0.18	0.001	6.19	1.17	1.96	2.12	2.42
90%	90%	10%	10%	60%	15%	95%	15%	25%	>95%	50%	15%	35%	70%	40%	45%

She's a power cow with 10% WW and YW, and plenty of carcass with 25% REA. She has a Black Top bull calf at her side and bred back the same way.

Breeding: Pasture exposed to BWCC Black Top 192G22, R10444674 from 5/15/23 to 8/7/23.



BWCC Black Top 192G22 ~ Sire of Lots 108A, 109A, 110A, 212

109A RBF 192G22 BLACK TOP 263L3

Born: 4/4/23 R10531677 Gen: 2 PHN: 263L3 Bull Calf From River Bend Farms

BWCC BLACK TOP 192G22
R10444674

BWCC MILE MARKER 889E32
BWCC MS CRUISE 192B62

MS BC LA PURCHASE 263G13
R10409143

DMR LOUISIANA PURCHASE 924D10
MS BC ROLLTIDE 263C11

BWCC CROSS FIT 541B28
BWCC MS NUFF SAID 889Z24
BWCC CRUISE 889Z28
BWCC MS BRAND NAME 192Z46
TJM THREE D 302A
RBM MS JETHRO 924W5
DMR ROLL TIDE 222Z29
MS CRC CSONKA 263U3

BW	WW	YW	REA	FT	IMF										
69 (103%)															
CED	BW	WW	YW	M	TM	CEM	SC	REA	IMF	FT	Hfr Prg	Stay	Cow Wt	TI	FI
2.9	1.5	31	53	6	22	1.89	0.44	0.41	0.09	0.02	3.83	1.32	1.72	2.46	2.31
70%	80%	25%	35%	75%	40%	95%	60%	20%	45%	85%	40%	35%	65%	35%	50%

110 PR PRIME CUT 535H5

Born: 3/10/20 R10442855 Gen: 6 PHN: 535H5 From River Bend Farms

CB PR PRIME CUT 415E11
R10359393

TJM THREE D 302A
CB MS NORTH STAR 415Z

MB MS REAL DEAL 535W2
AX10155310

MC REAL DEAL 541R3
MB MS NEW ERA 535M

BRANGL'S
GE-EPDS

CB FINAL CUT 924X
OAKS MS PATTON 302X3
CRC NORTH STAR 9U8W3
CB MS BLANDA 415X7
TJM JOHN WAYNE 44L
MB MS FREIGHT LINER 541K
NEW ERA OF BRINKS 541J37
MS LER SHINING STAR 535F2

BW	WW	YW	REA	FT	IMF										
83 (107%)	651 (104%)	851 (110%)	9.12 (108%)	0.19 (112%)	4.84 (106%)										
CED	BW	WW	YW	M	TM	CEM	SC	REA	IMF	FT	Hfr Prg	Stay	Cow Wt	TI	FI
1.6	1.6	34	59	11	28	2.8	0.63	0.32	0.13	0.011	6.21	1.63	31.97	2.87	1.44
80%	80%	15%	15%	30%	15%	75%	35%	25%	30%	80%	15%	25%	>95%	20%	80%

Super balance with 11 traits and indices within the breed's upper 30%. She's a Prime Cut out of a Real Deal daughter with a Black Top Heifer calf at her side and bred back the same way.

Breeding: Pasture exposed to BWCC Black Top 192G22, R10444674 from 5/15/23 to 8/7/23.

110A RBF MS 192G22 B TOP 535L23

Born: 3/27/23 R10531673 Gen: 2 PHN: 535L23 Heifer Calf From River Bend Farms

BWCC BLACK TOP 192G22
R10444674

BWCC MILE MARKER 889E32
BWCC MS CRUISE 192B62

PR PRIME CUT 535H5
R10442855

CB PR PRIME CUT 415E11
MB MS REAL DEAL 535W2

BWCC CROSS FIT 541B28
BWCC MS NUFF SAID 889Z24
BWCC CRUISE 889Z28
BWCC MS BRAND NAME 192Z46
TJM THREE D 302A
CB MS NORTH STAR 415Z
MC REAL DEAL 541R3
MB MS NEW ERA 535M

BW	WW	YW	REA	FT	IMF										
69 (113%)															
CED	BW	WW	YW	M	TM	CEM	SC	REA	IMF	FT	Hfr Prg	Stay	Cow Wt	TI	FI
1.8	2	30	54	8	23	0.32	0.42	0.25	0.025	3.84	1.55	16.73	2.86	1.82	
80%	90%	20%	20%	60%	30%	%	65%	15%	15%	95%	35%	25%	>95%	20%	70%

Spring Three-in-Ones

111 COLD CREEK MS CSONKA 88H5

Born: 9/15/20 R10471812 Gen: 2 PHN: 88H5 From River Bend Farms

CSONKA OF BRINKS 30R4
R10004209

LEAD GUN OF BRINKS 222K14
MISS BRINKS UPPERCUT 30L18

CADENCE OF BRINKS
MISS BB NEW BIG EASY 222E55
UPPERCUT OF BRINKS 14J8
MISS BRINKS SUNDANCE 30J32
MC BOULDER 889Z14
MC MS 778 TRAVELER 834Z
COLD CREEK/SUHN'S ALYDAR 331X78
COLD CREEK MS LARGENT 88X2

COLD CREEK MS GRANITE 88E
R10349647

MC GRANITE 834B
COLD CREEK MS ALYDAR 88B2

BRANGUS
GE-EPDS

BW	WW	YW	REA	FT	IMF										
78 (108%)	603 (98%)	919 (100%)	13.14 (100%)	0.21 (100%)	3.83 (100%)										
CED	BW	WW	YW	M	TM	CEM	SC	REA	IMF	FT	Hfr Prg	Stay	Cow Wt	TI	FI
1.9	1.8	29	62	9	24	2.51	0.77	0.38	0.33	0.015	6.18	1.4	1.76	3.46	2.45
75%	85%	25%	10%	50%	25%	85%	25%	15%	10%	85%	15%	30%	70%	10%	40%

She's an own daughter of Csonka of Brinks 30R4 out of a Granite daughter that writes an impressive genomic profile with 9 traits in the breed's upper 25%. She is dragging a nice Burly bull calf at side. Bred back to Black Top.

Breeding: Pasture exposed to BWCC Black Top 192G22, R10444674 from 5/15/23 to 8/7/23.

111A RBF BURLY 88L

Born: 3/8/23 R10531670 Gen: 2 PHN: 88L Bull Calf From River Bend Farms

BWCC BURLY 889G40
R10444699

BWCC MONUMENT 10D7
BWCC MS NUFF SAID 889Z24

COLD CREEK MS CSONKA 88H5
R10471812

CSONKA OF BRINKS 30R4
COLD CREEK MS GRANITE 88E

MC BOULDER 889Z14
BWCC MS RESOURCE 10A10
MC NUFF SAID 889T50
MC MS 5175 BANDO 889P12
LEAD GUN OF BRINKS 222K14
MISS BRINKS UPPERCUT 30L18
MC GRANITE 834B
COLD CREEK MS ALYDAR 88B2

BW	WW	YW	REA	FT	IMF										
72 (108%)															
CED	BW	WW	YW	M	TM	CEM	SC	REA	IMF	FT	Hfr Prg	Stay	Cow Wt	TI	FI
0.4	2.2	38	68	11	30	1.89	1.01	0.36	0.24	0.031	6.08	1.68	-0.38	3.4	2.66
90%	90%	15%	15%	25%	10%	95%	15%	25%	20%	95%	20%	25%	55%	15%	35%

112 L&W UB MS NEW VISION 18E

Born: 3/15/17 R10352347 Gen: 1 PHN: 18E From River Bend Farms

CLVR NEW VISION 302B9
R10276304

NEW VISION OF SALACOA 209Y2
MS DMR LTD 302Y6

LAMBERT OF BRINKS 317R3
MS BRINKS BRIGHT SIDE 209L11
LTD OF BRINKS 415T28
MS DMR NEXT STEP 302W5
SUHN'S CHISHOLM 331W45
CALLAWAYS RITA 1531
L & W MR JOHN WAYNE 27R
LW18T4

L&W MS UB CHISHOLM 18C
UB10294031

CB CHISHOLM 1531Z
L&W MISS JOHN WAYNE 18X4

BW	WW	YW	REA	FT	IMF										
75 (105%)	423 (87%)	619 (96%)	7.93 (94%)	0.1 (77%)	2.28 (68%)										
CED	BW	WW	YW	M	TM	CEM	SC	REA	IMF	FT	Hfr Prg	Stay	Cow Wt	TI	FI
5.7	0.2	15	34	1	8	4.33	0.56	0.24	0.04	0	2.46	0.18	-14.85	1.52	2.04
30%	40%	70%	65%	>95%	95%	30%	40%	35%	50%	45%	55%	75%	4%	60%	60%

Balance and efficiency in this New Vision granddaughter. Note the 4% Mature Cow Weight index. She's dragging a Stonewall bull calf and bred back to Black Top.

Breeding: Pasture exposed to BWCC Black Top 192G22, R10444674 from 5/15/23 to 8/7/23.

112A RBF 129G4 STONEWALL 18L

Born: 3/18/23 R10531672 Gen: 2 PHN: 18L Bull Calf From River Bend Farms

PR STONEWALL 129G4
R10410328

STONEWALL OF RRR 222W6
MB MS YELLOWSTONE 129B6

L&W MS UB NEW VISION 18E
R10352347

CLVR NEW VISION 302B9
L&W MS UB CHISHOLM 18C

CSONKA OF BRINKS 30R4
MS BRINKS LOMBARDI 222S20
MB YELLOWSTONE 17Y2
MB MS INFOCUS 129X12
NEW VISION OF SALACOA 209Y2
MS DMR LTD 302Y6
CB CHISHOLM 1531Z
L&W MISS JOHN WAYNE 18X4

BW	WW	YW	REA	FT	IMF										
57 (85%)															
CED	BW	WW	YW	M	TM	CEM	SC	REA	IMF	FT	Hfr Prg	Stay	Cow Wt	TI	FI
8.1	-0.8	18	41	4	13	4.3	0.77	0.53	0.16	0.016	4.85	0.83	-9.06	2.36	2.17
15%	20%	65%	55%	90%	85%	25%	30%	10%	30%	80%	30%	55%	15%	40%	55%

113 ABF MS CSONKA 134E

Born: 2/4/17 R10346637 Gen: 6 PHN: 134E From Addison Brangus Farms

CSONKA OF BRINKS 30R4
R10004209

LEAD GUN OF BRINKS 222K14
MISS BRINKS UPPERCUT 30L18

CADENCE OF BRINKS
MISS BB NEW BIG EASY 222E55
UPPERCUT OF BRINKS 14J8
MISS BRINKS SUNDANCE 30J32
CADENCE OF BRINKS
TRR'S MS SOUTHERN PINE 594F1
SVF MR 44S6
SVF MS 134S

MS SVF CADENCE 134Y3
R10189646

SR CADENCE WARRIOR 570Z
SVF 44S6 134 W239

BRANGUS
GE-EPDS

BW	WW	YW	REA	FT	IMF										
72 (98%)	641 (111%)	942 (100%)	11.64 (113%)	0.37 (109%)	5.06 (119%)										
CED	BW	WW	YW	M	TM	CEM	SC	REA	IMF	FT	Hfr Prg	Stay	Cow Wt	TI	FI
4.8	0.6	25	54	4	17	3.82	1.01	0.25	0.32	0.003	6.23	1.58	-2.96	3.11	3.11
40%	50%	35%	20%	90%	65%	45%	10%	35%	10%	55%	15%	25%	40%	15%	20%

This direct daughter out of the legendary Csonka of Brinks has a fancy Black Rock heifer calf at side. Csonka has 2523 progeny recorded. As you will see from the phenotype of 134E, he has been used extensively for a good reason. Ms Csonka has 14 EPDs breed average or better including top 10% IMF, 20% YW and 35% WW. Nice cow/calf pair to consider.

Breeding: Pasture exposed to ABF Black Rock 27H5, R10458503 from 5/20/23 to 7/28/23.

113A ABF MS BLACK ROCK 134L2

Born: 5/4/23 R10534185 Gen: 6 PHN: 134L2 Heifer Calf From Addison Brangus Farms

ABF BLACK ROCK 27H5
R10458503

DMR EMPIRE 795D12
ABF MS SATIN 27E2

ABF MS CSONKA 134E
R10346637

CSONKA OF BRINKS 30R4
MS SVF CADENCE 134Y3

TJM THREE D 302A
MS DMR JETHRO 795Y2
ABF SATIN 857B
ABF MS ON TASK 27C1
LEAD GUN OF BRINKS 222K14
MISS BRINKS UPPERCUT 30L18
SR CADENCE WARRIOR 570Z
SVF 44S6 134 W239

BW	WW	YW	REA	FT	IMF										
70 (95%)															
CED	BW	WW	YW	M	TM	CEM	SC	REA	IMF	FT	Hfr Prg	Stay	Cow Wt	TI	FI
5.2	0.5	37	63	6	24	4.04	0.93	0.29	0.06	0	8.17	1.73	0.3	2.9	3.05
35%	50%	10%	10%	75%	25%	35%	15%	25%	45%	45%	5%	20%	60%	15%	20%

Fall Pair

114 ABF MS DEFENDER 174D1

Born: 10/24/16 R10333001 Gen: 5 PHN: 174D1 From Addison Brangus Farms

DMR DEFENDER 594A20
R10254773

CRC GUARDIAN 9U8U5

WR MS DUKE 59457

CSONKA OF BRINKS 30R4

MISS 4L BEST BET 9U8P5

WR DUKE 228/F

WR MS TRANSFORMER VI 594N3

MC NUFF SAID 889T50

L&W MISS LTD 412X

JESSE OF BRINKS 392P105

MF MISS CEO L4 174P3

ABF MS ENOUGH SAID 174B
R10277465

L&W MR NUFF SAID 412Z

MF MISS JESSE 174A



BW	WW	YW	REA	FT	IMF											
81 (94%)	618 (97%)	990 (96%)	14.7 (106%)	0.31 (90%)	3.05 (89%)											
CED	BW	WW	YW	M	TM	CEM	SC	REA	IMF	FT	Hfr	Prg	Stay	CowWt	TI	FI
-5.2	4	32	58	9	26	1.7	0.49	0.37	0.01	-0.021	5.05	1.65	-3.58	2.42	3.87	
>95%	>95%	15%	15%	50%	20%	95%	50%	20%	60%	1%	25%	20%	40%	30%	4%	

Ms Defender is a nicely made, good-boned female with 14 EPDs in the breeds top 45% or better including top 15% WW & YW and top 20% REA. She has a 376-day calving interval on her last three calves. Because of her good fertility, we used her in our embryo program. She now has an ET calf at side by BWCC Monument 10D7 and our Ms DMR Guardian 468C7 donor.

Breeding: Pasture exposed to ABF Blackstone 23G2, R10410461 from 12/19/22 to 2/28/23.



ABF Ms Enough Said 174B ~ Dam of Lot 114

114A ABF MS MONUMENT 468L2

Born: 9/1/23 R10537797 Gen: 1 PHN: 468L2 Heifer Calf From Addison Brangus Farms

BWCC MONUMENT 10D7
UB10336225

MC BOULDER 889Z14

BWCC MS RESOURCE 10A10

MC SOMETHING SPECIAL 129W14

MC MS EXTRAVAGANT 889X4

S A V RESOURCE 1441

BWCC MS NUFF SAID 10X

CSONKA OF BRINKS 30R4

MISS 4L BEST BET 9U8P5

NEW ERA OF BRINKS 541J37

MISS BRINKS CADENCE 468G15

MS DMR GUARDIAN 468C7
R10296914

CRC GUARDIAN 9U8U5

MS BRINKS NEW ERA 468P14

BW	WW	YW	REA	FT	IMF											
61 (100%)																
CED	BW	WW	YW	M	TM	CEM	SC	REA	IMF	FT	Hfr	Prg	Stay	CowWt	TI	FI
5.6	-1	30	48	11	26	3.4	1.37	0.41	0.31	0.028	6.95	2.72	4.87			
30%	15%	20%	35%	30%	20%	60%	2%	15%	10%	>95%	10%	4%	85%			

ET calf at side sired by BWCC Monument 10D7 and out of our Ms DMR Guardian 468C7 donor. She sells at side of Lot 114 ABF Ms Defender 174D1.



Ms DMR Guardian 468C7 ~ Dam of Lots 114A, 203, 204

Fall Bred Cows



ABF Blackstone 23G2 ~
Service Sire of Lots 114, 115, 120 • Sire of Lots 146, 181

115 ABF MS ON TASK 134E5

Born: 10/8/17 R10364279 Gen:5 PHN: 134E5 From Addison Brangus Farms

ON TASK OF SALACOA 23Y42
R10189682

CADENCE OF BRINKS
SVF MS 23M28

HUB OF BRINKS 392Z
MISS BB NEW TYSON 535B15
NEW ERA OF BRINKS 541J37
SALACOA PINE LASS 23D2
CCR SLEEP EASY 150R
PF MS LUCY 1000P
PR ELIXIR 698L3
CCC MS 915 LUCKY 134R

ABF MS SLEEP EASY 134A2
R10238887

CCR SLEEP EASY 1000U3
SVF MS ELIXIR 134Y2

BRANGUS
GE-EPDS

BW	WW	YW	REA	FT	IMF										
69 (95%)	581 (97%)	985 (100%)	10.43 (92%)	0.35 (80%)	4.33 (196%)										
CED	BW	WW	YW	M	TM	CEM	SC	REA	IMF	FT	Hfr Prg	Stay	Cow Wt	TI	FI
3.2	0	27	52	15	29	5.98	0.52	0.15	0.46	0.005	5.42	2.1	-3.33	3.48	3.95
65%	35%	30%	25%	10%	10%	3%	45%	50%	4%	65%	20%	15%	40%	10%	4%

Ms On Task 134E5 has raised some good calves for us over the past few years. She has an outstanding 368-day calving interval with 16 EPD traits breed average or better. 13 of those 16 EPD traits are 30% or better including top 3% IMF, 10% Milk and 25% WW and YW. She has been an all-around good cow for us at Addison Brangus Farms.

Breeding: Pasture exposed to ABF Blackstone 23G2, R10410461 from 12/19/22 to 2/28/23. Sells at 7 months bred.



ABF Ms Csonka 134G

116 ABF MS CSONKA 134G

Born: 2/14/19 R10410449 Gen:6 PHN: 134G From JRT Brangus

CSONKA OF BRINKS 30R4
R10004209

LEAD GUN OF BRINKS 222K14
MISS BRINKS UPPERCUT 30L18

CADENCE OF BRINKS
MISS BB NEW BIG EASY 222E55
UPPERCUT OF BRINKS 14J8
MISS BRINKS SUNDANCE 30J32
CADENCE OF BRINKS
TRR'S MS SOUTHERN PINE 594F1
SVF MR 4456
SVF MS 134S

MS SVF CADENCE 134Y3
R10189646

SR CADENCE WARRIOR S702
SVF 4456 134 W239

BRANGUS
GE-EPDS

BW	WW	YW	REA	FT	IMF										
76 (110%)	700 (110%)	962 (106%)	11.31 (98%)	0.53 (117%)	7.18 (129%)										
CED	BW	WW	YW	M	TM	CEM	SC	REA	IMF	FT	Hfr Prg	Stay	Cow Wt	TI	FI
3.8	1.1	31	61	10	26	3.58	1.01	0.19	0.45	0.017	6.11	1.74	-2.96	3.67	3.16
55%	65%	20%	15%	40%	20%	55%	10%	45%	4%	90%	15%	20%	40%	5%	15%

She was our selection of bred heifers from the 2020 ABF sale. She is a powerfully bred Csonka daughter who posts 11 EPDs in the top 35% or better led by top 4% IMF, 5% Terminal, 10% SC, 15% YW, 20% WW, TM, and Stay. She scanned an incredible 7.18% actual IMF. She is safe in calf to Eldorado for a fall calf.

Breeding: AI'd to DMR Dutton 331H8, UB10462638 on 12/14/22. Pasture exposed to DMR Eldorado 30B15, R10284830 from 12/26/22 to 2/26/23. Safe.

117 HCC MS ELDORADO 23H5

Born: 10/27/20 R10461606 Gen:5 PHN: 23H5 From Las Palomas Ranch

DMR ELDORADO 30B15
R10284830

TJM CORONADO 535X
SUHN'S MISS PATTON 30X6

CB HOMBRE 541T3
MS BRINKS LAMBERT 535T4
PATTON OF BRINKS 30T22
SUHN'S MS DUKE 30M
HUB OF BRINKS 392Z
MISS BB NEW TYSON 535B15
SVF-CNF PINE LOG 793Y
WPH MISS TINY 23U

MS SVF CADENCE 23Y58
R10195249

CADENCE OF BRINKS
SALACOA PINE LASS 23R59

BRANGUS
GE-EPDS

BW	WW	YW	REA	FT	IMF										
80 (100%)															
CED	BW	WW	YW	M	TM	CEM	SC	REA	IMF	FT	Hfr Prg	Stay	Cow Wt	TI	FI
4.2	-0.2	21	33	3	14	4.26	0.31	0	0.03	-0.009	5.14	1.43	-5.32	1.38	3.21
50%	30%	50%	70%	95%	80%	30%	70%	75%	55%	15%	25%	30%	30%	65%	15%

She's a DMR Eldorado 30B15 out of a daughter of one of the clones of 23D2, the matron of the 23 cow family that put Salacoa Valley on the map. She writes a balanced genomic profile with 10 traits in the upper 50% of the breed.

Breeding: AI'd to DMR Cash Flow 535F30, UB10386538 on 3/25/23.

118 ERC MS BROADWAY 487J

Born: 3/24/21 R10465776 Gen:8 PHN: 487J From East Ridge Cattle

T3 BROADWAY 30E
R10367402

HOLLYWOOD OF SALACOA 23A53
MS SALACOA ATLANTA 30B5

NEW VISION OF SALACOA 209Y2
MS SVF PATTON 23Y66
ATLANTA OF SALACOA 488Z
MS BRINKS UNITAS 30T94
S A V RESOURCE 1441
BWCC MS ELEGIDO 403Y
MC BOULDER 889Z14
BWCC MS NUFF SAID 487Y9

VF MS OVERLOAD 487F
UB10407871

BWCC OVERLOAD 403A
BWCC MS BOULDER 487B28

BRANGUS
GE-EPDS

BW	WW	YW	REA	FT	IMF										
78 (100%)	563 (100%)	836 (100%)	8.7 (100%)	0.06 (100%)	4.7 (100%)										
CED	BW	WW	YW	M	TM	CEM	SC	REA	IMF	FT	Hfr Prg	Stay	Cow Wt	TI	FI
2.6	0.1	33	59	8	25	0.59	0.97	0.51	0.06	0.002	6.69	1.87	-6.53	2.96	3.71
70%	35%	15%	15%	60%	25%	>95%	10%	10%	45%	55%	15%	15%	25%	15%	10%

Sired by the \$67,000 Broadway 30E. Flush mate sister sold for \$13,000 in Quail Valley's June 2022 sale as a bred heifer. She has 11 EPDs in the top 25%. Safe in calf.

Breeding: Pasture exposed to LM Signal 468J16, R10480606 from 1/16/23 to sale day. Safe in calf.

Fall Bred Cows

119 ERC MS BROADWAY 487J6

Born: 4/2/21 R10465783 Gen: 8 PHN: 487J6 From East Ridge Cattle

T3 BROADWAY 30E
R10367402

HOLLYWOOD OF SALACOA 23A53
MS SALACOA ATLANTA 30B5

NEW VISION OF SALACOA 209Y2
MS SVF PATTON 23Y66
ATLANTA OF SALACOA 488Z
MS BRINKS UNITAS 30T94
S A V RESOURCE 1441
BWCC MS ELEGIDO 403Y
MC BOULDER 889Z14
BWCC MS NUFF SAID 487Y9

VF MS OVERLOAD 487F
UB10407871

BRANGUS
GE-EPDS

BWCC OVERLOAD 403A
BWCC MS BOULDER 487B28

BW	WW	YW	REA	FT	IMF											
84 (100%)	598 (100%)	878 (100%)	8.01 (100%)	0.14 (100%)	4.03 (100%)											
CED	BW	WW	YW	M	TM	CEM	SC	REA	IMF	FT	Hfr	Prg	Stay	CowWt	TI	FI
1.2	0.8	35	62	8	26	0.53	0.97	0.44	-0.04	0.009	8.72	2.09	-6.53	2.66	3.66	
85%	60%	10%	10%	60%	20%	>95%	10%	10%	80%	75%	4%	15%	25%	20%	10%	

Sired by the \$67,000 Broadway 30E. Flush mate sister sold for \$13,000 in Quail Valley's June 2022 sale as a bred heifer. She has 11 EPDs in the top 25%. Safe in calf.

Breeding: Pasture exposed to LM Signal 468J16, 10480606 from 1/16/23 to sale day. Safe in calf.



T3 Broadway 30E ~ Sire of Lots 118, 119, 137

120 MS SALACOA STONEWALL 535E34

Born: 9/26/17 R10367551 Gen: 7 PHN: 535E34 From Addison Brangus Farms

STONEWALL OF RRR 222W6
R10150860

CSONKA OF BRINKS 30R4
MS BRINKS LOMBARDI 222S20

LEAD GUN OF BRINKS 222K14
MISS BRINKS UPPERCUT 30L18
LOMBARDI OF BRINKS 468N10
MISS BRINKS PICASSO 222K
HANNIBAL OF BRINKS 784T6
MS BRINKS NEW ERA 468P27
PR ELIXIR 698L3
SVF MS 535S14

MS SALACOA AMERICUS 535C34
R10305350

BRANGUS
GE-EPDS

AMERICUS OF SALACOA 468Y16
MS SVF ELIXIR 535X14

BW	WW	YW	REA	FT	IMF											
89 (112%)	588 (113%)	976 (114%)	11.65 (118%)	0.37 (149%)	4.05 (111%)											
CED	BW	WW	YW	M	TM	CEM	SC	REA	IMF	FT	Hfr	Prg	Stay	CowWt	TI	FI
2.1	0.4	37	66	16	35	4.23	0.42	0.74	0.14	0.023	5.75	1.61	-14.3	3.58	3.43	
75%	45%	10%	10%	10%	2%	30%	55%	1%	30%	95%	20%	25%	4%	10%	10%	

Ms Stonewall was our pick of the open heifers at the Salacoa Valley Sale in 2018. She has a 379-day calving interval on her first four calves. 535E34 has an outstanding set of EPDs in the breeds top 40% or better, including top 1% REA, 10% WW, YW and Milk and 30% IMF to name a few. This deep, thick-made female is in the prime of her life. She should add value to anyone's herd!

Breeding: Pasture exposed to ABF Blackstone 23G2, R10410461 from 12/19/22 to 2/28/23. Heavy bred, could have her calf by sale day.



Ms Salacoa Stonewall 535E34

121 ELC MS MAJESTIC BEACON 781G4

Born: 1/30/19 R10403205 Gen: 3 PHN: 781G4 From EC Brangus, LLC

SUHN'S MAJESTIK BEACON 30C
UB10292617

TJM THREE D 302A
SCC MISS MYTTY 30Z5

CB FINAL CUT 924X
OAKS MS PATTON 302X3
MYTTY IN FOCUS
SUHN'S MS DUKE 30M
CRC GUARDIAN 9U8U5
MS ELC R532 793Z2
GARRETT OF BRINKS 789P
QCB MS 781W

ELC MS GUARDIAN 781E15
R10344987

ELC MR GUARDIAN 793B2
CJB MS 781Y

BW	WW	YW	REA	FT	IMF											
77 (108%)	473 (102%)	580 (93%)	9.5 (101%)	0.04 (84%)	2.78 (96%)											
CED	BW	WW	YW	M	TM	CEM	SC	REA	IMF	FT	Hfr	Prg	Stay	CowWt	TI	FI
2.9	1.2	42	78	7	28	2.84	1.1	0.32	-0.07	0.002	8.05	1.36	7.19	3.19	2.27	
65%	70%	3%	2%	70%	15%	75%	5%	25%	90%	55%	5%	30%	90%	15%	50%	

She is parent-verified. This young Beacon daughter is pregnant with her third calf, very productive. She is gentle and very feminine. She is ranked in the top 5% of the breed on WW, YW and SC. She is a third-generation Brangus. She and her offspring will stand out in any herd.

Breeding: AI'd to BWCC BlackTop 192G22, R10444674 on 12/27/22. Pasture exposed to ELC Mr Cash Flow 96J12, UB10480809 from 1/18/23 to 3/3/23. Confirmed safe - 6 1/2 months bred on sale day.



ELC Ms Majestic Beacon 781G4

Fall Bred Cows



VF Ms Overload 889E9

122 VF MS OVERLOAD 889E9

Born: 3/10/17 UB10349205 Gen: 2 PHN: 889E9

From Galloway Brangus Farms

BWCC OVERLOAD 403A
UB10251935

S A V RESOURCE 1441
BWCC MS ELEGIDO 403Y

RITO 707 OF IDEAL 3407 7075
S A V BLACKCAP MAY 4136
MC ELEGIDO 924W6
BWCC MS REAL DEAL 403W3
MC JETHRO 00S3
MC MS LEAD GUN 129T12
MC JOHN WAYNE 165N3
MC MS EXTRAVAGANT 889P4

VF MS SPECIAL 889Y
R10214973

BRANGUS
GE-EPDs

MC SOMETHING SPECIAL 129W14
BWC MS TANK 889T4

BW	WW	YW	REA	FT	IMF										
64	500 (100%)	755 (97%)	8.49 (95%)	0.13 (87%)	4.34 (101%)										
CED	BW	WW	YW	M	TM	CEM	SC	REA	IMF	FT	Hfr Prg	Stay	Cow Wt	TI	FI
2.1	1	35	62	16	33	2.49	1.21	0.45	0.16	0.029	5.62	3.04	3.84	3.2	4.49
75%	65%	10%	10%	10%	4%	85%	3%	10%	25%	>95%	20%	2%	80%	15%	1%

This lady has done a great job for us. Her EPDs are led by top 1% Fert, 2% STAY and NC, 3% SC, TM and BB, 10% WW, YW, REA, Milk and Term and 25% IMF. She has been flushed to Big Town, Atlanta, Empower, Perfect Fit Empire, Never Surrender and Final Time. Time to give someone else an opportunity as we have the tank full.

Breeding: AI'd to QVF PR Empower 30G16, R10412716 on 1/6/23. Pasture exposed to VF LE Mans 468J65, R10490657 from 1/20/23 to 2/18/23.



125 GBF MS VISION 392B13 922E3

Born: 10/5/17 R10367131 Gen: 7 PHN: 922E3

From M Quick Farms

SALACOA NEW VISION 392B13
R10273309

NEW VISION OF SALACOA 209Y2
MS SVF WARRIOR 392X7

LAMBERT OF BRINKS 317R3
MS BRINKS BRIGHT SIDE 209L11
TCB CATAWBA WARRIOR R532
SVF MS 820L7 392S11
COLE OF BRINKS 14P3
MS BRINKS BLACKHAWK 535P60
GBF MR TYSON NEWSMAN 448
GBF MS ROCK START 374

GBF MS COLE 535575 ROCK 922
R10139891

BRANGUS
GE-EPDs

BRINKS COLE 535575
GBF MS TYSON 448 ROCK 679

BW	WW	YW	REA	FT	IMF										
78 (94%)	616 (109%)	896 (99%)													
CED	BW	WW	YW	M	TM	CEM	SC	REA	IMF	FT	Hfr Prg	Stay	Cow Wt	TI	FI
2.8	0	34	64	15	32	1.76	0.42	0.44	0.07	0.015	-1.54	0.01	-13.52	3.17	2.04
70%	35%	15%	10%	10%	5%	95%	55%	10%	45%	85%	>95%	80%	5%	15%	60%

Ms Vision 922E3 is a docile easy working cow. Look at her BW to YW spread 35% to 10%. Top 10% REA and 5% Mature Cow Weight. A very efficient cow with growth.

Breeding: Confirmed fall bred to QVF Strategy 535H17, R10460818.



Oaks Ms Passport 99C53 ~ Dam of Lot 126

126 LP MS 99C68 PASSPORT 99F24

Born: 3/1/18 R10390490 Gen: 6 PHN: 99F24

From Las Palomas Ranch

OAKS PASSPORT 99C68
R10287020

CB PASSPORT 803Y11
OAKS MS CSONKA 99Y11

CB HOMBRE 541T3
MS BRINKS LAMBERT 803T6
CSONKA OF BRINKS 30R4
MS BRINKS BRIGHT SIDE 99P15
CB HOMBRE 541T3
MS BRINKS LAMBERT 803T6
CSONKA OF BRINKS 30R4
MS BRINKS BRIGHT SIDE 99P15

OAKS MS PASSPORT 99C53
R10287166

CB PASSPORT 803Y11
OAKS MS CSONKA 99Y11

BW	WW	YW	REA	FT	IMF										
63 (87%)															
CED	BW	WW	YW	M	TM	CEM	SC	REA	IMF	FT	Hfr Prg	Stay	Cow Wt	TI	FI
11.8	-2.4	13	34	5	12	2.61	0.61	0.26	0.32	0.023	3.9	0.37	1.36	2.43	1.01
1%	3%	80%	65%	85%	85%	80%	35%	30%	10%	95%	35%	65%	65%	30%	90%

This is the epitome of line breeding, being a brother-sister mating. A calving ease female with top 1% CED and 3% BW and a carcass queen with 30% REA and 10% IMF.

Breeding: AI'd to CB Cowboy 2H2, R10452433 on 1/26/23.

Spring Bred Cows

127 GHB MS TINSELTOWN 52F31

Born: 9/12/18 R10393317 Gen: 6 PHN: 52F31 From Boot Hill Farms

TINSELTOWN OF SALACOA 468D4
R10317960

HOLLYWOOD OF SALACOA 23A53
MS BRINKS NEW ERA 468P22

NEW VISION OF SALACOA 209Y2
MS SVF PATTON 23Y66
NEW ERA OF BRINKS 541J37
MISS BRINKS CADENCE 468G15
LTD OF BRINKS 415T28
SUHNS MISS AFFIRMED 331S34
SINGLETARY OF BRINKS 675R
MISS CALYX NIMITZ 52R12

MS C STAR CHISHOLM 52B26
R10277050

SUHN'S CHISHOLM 331W45
MS CSR SINGLETARY 52W17

BW	WW	YW	REA	FT	IMF										
66 (100%)	483 (100%)														
CED	BW	WW	YW	M	TM	CEM	SC	REA	IMF	FT	Hfr Prg	Stay	Cow Wt	TI	FI
0.3	1.3	29	57	3	18	2.73	0.56	0.43	0.14	0	6.03	0.85	-5.63	2.84	2.23
90%	75%	25%	20%	95%	60%	80%	40%	15%	30%	45%	15%	50%	30%	20%	50%

Solid young cow with a phenomenal Big Town heifer calf at side.

Breeding: Pasture exposed to LP Crossroads 535H8, R10461576 from 4/27/23 to 7/31/23.

128 ABF MS CSONKA 23E11

Born: 11/29/17 R10364242 Gen: 5 PHN: 23E11 From Addison Brangus Farms

CSONKA OF BRINKS 30R4
R10004209

LEAD GUN OF BRINKS 222K14
MISS BRINKS UPPERCUT 30L18

SVF MS CADENCE 23S69
R10078220

CADENCE OF BRINKS
SVF MS 23M28

CADENCE OF BRINKS
MISS BB NEW BIG EASY 222E55
UPPERCUT OF BRINKS 14I8
MISS BRINKS SUNDANCE 30J32
HUB OF BRINKS 39Z2
MISS BB NEW TYSON 535B15
NEW ERA OF BRINKS 541J37
SALACOA PINE LASS 23D2

BW	WW	YW	REA	FT	IMF										
74 (102%)	433 (100%)	887 (100%)	11.29 (100%)	0.29 (100%)	3.25 (100%)										
CED	BW	WW	YW	M	TM	CEM	SC	REA	IMF	FT	Hfr Prg	Stay	Cow Wt	TI	FI
3.1	0.8	25	45	13	26	4.81	0.77	0.3	0.17	-0.013	8.42	1.68	-0.37	2.49	3.43
65%	60%	35%	40%	20%	20%	20%	25%	25%	25%	5%	4%	20%	55%	25%	10%

This feminine Csonka daughter has 14 EPD traits in the breeds top 40% or better including top 15% Milk and top 25% REA & IMF. She has a very nice udder with a remarkable 364-day calving interval on her last three calves. She is bred back to the Black Rock bull.

Breeding: Pasture exposed to ABF Black Rock 27H5, R10458503 from 5/28/23 to 7/28/23. Sells at 3 1/2 months bred to Black Rock.

216 CLVR MS HUASTECO 209D

Born: 3/6/16 R10319286 Gen: 5 PHN: 209D From Las Palomas Ranch

CLVR-TJM HUASTECO 535A
R10253250

CB FINAL CUT 924X
SF MS NEWSMAN 535R3

MC REVELATION 129T
RBM MS GUNS 924T3
MC NEWS MAN 81H13
SF MISS ANGELO 535M2
LEAD GUN OF BRINKS 222K14
MISS BRINKS UPPERCUT 30L18
BRIGHT SIDE OF BRINKS 789G5
MISS BRINKS NEWSDAY 209G9

MS SALACOA CSONKA 209Z15
R10226277

CSONKA OF BRINKS 30R4
MS BRINKS BRIGHT SIDE 209L11

BRANGUS
GE-EPDS

BW	WW	YW	REA	FT	IMF										
78 (104%)	607 (102%)	715 (83%)	8.32 (80%)	0.58 (201%)	4.1 (91%)										
CED	BW	WW	YW	M	TM	CEM	SC	REA	IMF	FT	Hfr Prg	Stay	Cow Wt	TI	FI
3.6	0.8	30	51	7	22	2.16	0.78	0.34	0.02	0.028	3.37	0.49	7.27	2.22	0.92
55%	60%	20%	25%	70%	35%	90%	20%	20%	60%	>95%	45%	60%	90%	35%	95%

Las Palomas is offering you a Huasteco daughter out of the 209Z15 female. A Csonka out of the legendary 209L11. She is extreme only in her balance when you study her GE-EPDs.

Breeding: AI'd to DMR Cash Flow 535F30, UB10386538 on 5/19/23.



CLVR-TJM Huasteco 535A ~ Sire of Lot 216

130 MS WCC BRICKHOUSE 487G

Born: 3/10/19 UB10417100 Gen: 2 PHN: 487G From Boot Hill Farms

SF BRICKHOUSE 909D9
R10321294

SUHN'S FOUNDATION 331Z28
SF MISS LTD 909Z4

GR SWIFT 209W3
SUHN'S MISS BT 331S43
LTD OF BRINKS 415T28
SF MISS ANGELO 909U4
S A V HARVESTOR 0338
S A V EMBLYNETTE 5483
MC STRYKER 2S
MISS 4C LEAD GUN 487P

SCB INT 20/20 487E2
UB10340385

S A V INTERNATIONAL 2020
BWCC MS STRYKER 487W4

BRANGUS
GE-EPDS

BW	WW	YW	REA	FT	IMF										
79 (98%)	674 (100%)	945 (100%)	11 (100%)	0.24 (100%)	4.16 (100%)										
CED	BW	WW	YW	M	TM	CEM	SC	REA	IMF	FT	Hfr Prg	Stay	Cow Wt	TI	FI
-1.3	1.7	33	61	3	19	3.77	0.98	0.47	0.25	0.011	6.53	0.53	1.29	3.23	1.27
95%	80%	15%	15%	95%	55%	45%	10%	10%	15%	80%	15%	60%	65%	10%	85%

She's a Brickhouse out of a SAV International 20/20 daughter that was used so successfully in the Blackwater and Mound Creek programs. Ms WCC Brickhouse 487G boasts 15% WW, YW, IMF, and HP. 10% SC and REA.

Breeding: Pasture exposed to LP Crossroads 535H8, R10461576 from 4/27/23 to 7/31/23.

131 ABF MS ON TASK 535E

Born: 5/2/17 R10346651 Gen: 4 PHN: 535E From Addison Brangus Farms

ON TASK OF SALACOA 23Y42
R10189682

CADENCE OF BRINKS
SVF MS 23M28

L&W MS NUFF SAID 685Z
R10217203

MC NUFF SAID 889T50
SVF CATAWBA 535 T685

HUB OF BRINKS 39Z2
MISS BB NEW TYSON 535B15
NEW ERA OF BRINKS 541J37
SALACOA PINE LASS 23D2
MC JOHN WAYNE 165N3
MC MS EXTRAVAGANT 889P4
TCB CATAWBA WARRIOR R532
SVF MS 535K49

BW	WW	YW	REA	FT	IMF										
72 (99%)	539 (93%)	849 (94%)	9.55 (85%)	0.37 (146%)	4.14 (98%)										
CED	BW	WW	YW	M	TM	CEM	SC	REA	IMF	FT	Hfr Prg	Stay	Cow Wt	TI	FI
2.6	0.5	35	60	14	32	4.52	0.7	0.26	0.3	0.017	6.98	2.1	-8.06	3.42	3.82
70%	50%	10%	15%	15%	5%	25%	30%	30%	10%	90%	10%	15%	20%	10%	5%

This On Task daughter has a set of EPDs that's hard to beat. She has 15 EPD traits in the breeds top 30% or better, including top 10% WW and IMF and top 15% YW and Milk. 535E is in the prime of her life. Take advantage of her 4.14 adjusted IMF and her high Milk EPD.

Breeding: Pasture exposed to ABF Black Rock 27H5, R10458503 from 5/28/23 to 7/28/23. Sells at 4 months bred.

Spring Bred Cows



On Task of Salacoa 23Y42 ~ Sire of Lots 115, 131, 132

132 ABF MS ON TASK 535E2

Born: 4/15/17 R10346646 Gen:5 PHN: 535E2 From Addison Brangus Farms

ON TASK OF SALACOA 23Y42
R10189682

CADENCE OF BRINKS
SVF MS 23M28

HUB OF BRINKS 392Z
MISS BB NEW TYSON 535B15
NEW ERA OF BRINKS 541J37
SALACOA PINE LASS 23D2
CSONKA OF BRINKS 30R4
MS BRINKS ALI 30P26
MC NUFF SAID 889T50
SVF CATAWBA 535T68S

ABF MS PATTON 535B
R10258687

PATTON OF BRINKS 30T22
L&W MS NUFF SAID 685Z

BRANGUS
GE-EPDs

BW	WW	YW	REA	FT	IMF										
76 (104%)	498 (86%)	891 (98%)	12.22 (109%)	0.18 (71%)	4.45 (105%)										
CED	BW	WW	YW	M	TM	CEM	SC	REA	IMF	FT	Hfr Prg	Stay	CowWt	TI	FI
2.7	0.5	33	63	14	31	4.41	0.65	0.44	0.2	0.004	6.14	1.53	4.23	3.46	3.24
70%	50%	15%	10%	15%	10%	25%	35%	10%	20%	60%	15%	25%	35%	10%	15%

Another On Task daughter with above average EPDs. She has 15 EPD traits in the breeds top 45% or better including, top 10% YW and REA and top 15% WW and Milk just to mention a few. She also has a 377-day calving interval on her last three calves. Her 4.45 IMF has a ratio of 105.

Breeding: Pasture exposed to ABF Black Rock 27H5, R10458503 from 5/28/23 to 7/28/23. Sells 5 months bred.



BWCC Cruise 323D3 ~ Sire of Lots 101, 133

133 HH MS CRUISE 541H3

Born: 10/14/20 R10461111 Gen:1 PHN: 541H3 From Hartness Brangus

BWCC CRUISE 323D3
UB10349309

BWCC CRUISE 889Z28
BWCC MS ROCK SOLID 323B

MC ELEGIDO 924W6
BWCC MS LEAD GUN 889W26
S A V ROCK SOLID 225T1
BWCC MS ROCK STAR 323X2
MC JETHRO 00S3
MC MS LEAD GUN 129T12
ANGELO OF BRINKS 489K4
MISS BRINKS HEAVY DUTY 541E7

VF MS SOMETHING SPECIAL 541Z
R10339311

MC SOMETHING SPECIAL 129W14
MS BRINKS ANGELO 541P38

BRANGUS
GE-EPDs

BW	WW	YW	REA	FT	IMF										
76 (91%)	632 (100%)	850 (100%)	10.2 (100%)	0.37 (100%)	4.85 (100%)										
CED	BW	WW	YW	M	TM	CEM	SC	REA	IMF	FT	Hfr Prg	Stay	CowWt	TI	FI
3.9	0.7	25	50	10	23	5.02	0.62	0.24	0.07	0.018	4.84	2.41	5.49	2.31	3.63
55%	55%	35%	30%	40%	30%	15%	35%	35%	45%	90%	25%	10%	85%	30%	10%

This BWCC Cruise 323D3 daughter has an interesting genomic profile as she has 12 traits and indices in the upper 35% of the entire population. She's extreme only in her moderation and balance. Sells bred to Milestone.

Breeding: Pasture exposed to BWCC Milestone 158H2, UB1041980 from 6/9/23 to 8/1/23.



QVF PR Empower 30G16 ~ Service Sire of Lots 101, 104, 122, 134, 135

134 2K MS HIGH CHOICE 541H60

Born: 8/29/20 R10477848 Gen:6 PHN: 541H60 From Hartness Brangus

OAKS HIGH CHOICE 99A1
R10235597

GR SWIFT 209W3
OAKS MS HOMBRE 99X9

LAMBERT OF BRINKS 317R3
MS BRINKS BRIGHT SIDE 209L11
CB HOMBRE 541T3
MS BRINKS NEWT 99T113
LAMBERT OF BRINKS 317R3
MS SVF CADENCE 488X11
CSONKA OF BRINKS 30R4
MS BRINKS GD FORTUNE 541P103

OAKS MS ATLANTA 541C54
R10287162

ATLANTA OF SALACOA 488Z
OAKS MS CSONKA 541T7

BW	WW	YW	REA	FT	IMF										
82 (100%)	649 (100%)														
CED	BW	WW	YW	M	TM	CEM	SC	REA	IMF	FT	Hfr Prg	Stay	CowWt	TI	FI
3.7	0.7	34	65	10	27	1.73	0.99	0.47	0.1	0.008	1.81	0.47	-9.79	3.21	2.35
55%	55%	15%	10%	40%	15%	95%	10%	10%	35%	70%	65%	65%	15%	10%	45%

It's rare to find many High Choice daughters at auction. This one comes from the famous 541P103 female, the most popular daughter of 541M40. She sells bred to the \$75,000 Empower!

Breeding: Pasture exposed to QVF PR Empower 30G16, R10412716 from 6/17/23 to 8/1/23.

Spring Bred Cows

123 LP MS NEW VISION 889H2

Born: 10/19/20 R10461572 Gen:4 PHN:889H2 From Las Palomas Ranch

NEW VISION OF SALACOA 209Y2
R10204856

LAMBERT OF BRINKS 317R3
MS BRINKS BRIGHT SIDE 209L11

LEAD GUN OF BRINKS 222K14
MS BRINKS GOOD FORTUNE 317M
BRIGHT SIDE OF BRINKS 789G5
MISS BRINKS NEWSDAY 209G9
VF-OAKS ONLINE 918Y3
SUHN'S MISS NORTH STAR 30A
CB HOMBRE 541T3
MC MS 338 RIGHT TIME 889R6

CLVR MS BUSINESS LINE 889F6
R10413409

SUHN'S BUSINESS LINE 30D26
CLVR MISS. FLO 889Z5



New Vision of Salacoa 209Y2 ~ Sire of Lot 123

BW	WW	YW	REA	FT	IMF
3	0.8	25	46	2	15
65%	60%	35%	35%	95%	75%

CED	BW	WW	YW	M	TM	CEM	SC	REA	IMF	FT	Hfr Prg	Stay	CowWt	TI	FI
0.3	2.4	32	49	8	24	1.44	0.34	0.44	0.14	0.01	4.93	2.58	1.83	2.39	4.1
90%	95%	15%	30%	60%	25%	>95%	65%	10%	30%	75%	25%	5%	70%	30%	3%

This is a New Vision of Salacoa 209Y2 out of the 889 tribe made popular by Mound Creek and Blackwater. 35% WW and YW, 15% REA and HP with 2% Mature Cow Weight.

Breeding: All'd to DMR Cash Flow 535F30, UB10386538 on 5/19/23.

135 BWCC MS BONUS 889H25

Born: 10/1/20 UB10472480 Gen:2 PHN:889H25 From Hartness Brangus

BWCC REWARD 812C28
UB10321377

S A V REWARD 3198
BWCC MS JETHRO 812W

S A V RESOURCE 1441
S A V PRISCILLA 6689
MC JETHRO 00S3
CCC MS CADENCE 812N
S A V HARVESTOR 0338
S A V EMBLYNETTE 5483
LEAD GUN OF BRINKS 222K14
MC MS EXTRAVAGANT 889P4

BWCC MS INTERNATIONAL 889B28
UB10293169

S A V INTERNATIONAL 2020
BWCC MS LEAD GUN 889W28



136 MCB MS RELAX 919F2

Born: 4/13/18 UB10379331 Gen:2 PHN:919F2 From Magnolia Creek Brangus

BWCC RELAX 10A12
UB10251869

S A V RESOURCE 1441
BWCC MS NUFF SAID 10X

SUHN'S MS HOMBRE-X40 919B18
R10271462

SUHN'S HOMBRE 416X40
SUHN'S MISS CSONKA 919Z17



RITO 707 OF IDEAL 3407 7075
S A V BLACKCAP MAY 4136
MC NUFF SAID 889T50
MS IRON FARM 301J5-10N3
CB HOMBRE 541T3
SUHN'S MISS NIMITZ 416P30
CSONKA OF BRINKS 30R4
SUHN'S MS NEXT STEP 919T2

BW	WW	YW	REA	FT	IMF
80 (113%)	627 (107%)	735 (103%)	8.88 (102%)	0.11 (74%)	4.38 (88%)

CED	BW	WW	YW	M	TM	CEM	SC	REA	IMF	FT	Hfr Prg	Stay	CowWt	TI	FI
0.3	2.4	32	49	8	24	1.44	0.34	0.44	0.14	0.01	4.93	2.58	1.83	2.39	4.1
90%	95%	15%	30%	60%	25%	>95%	65%	10%	30%	75%	25%	5%	70%	30%	3%

She boasts 11 EPD traits in the breed's upper 30%.

Breeding: Pasture exposed to QVF PR Empower 30G16, R10412716 from 6/17/23 to 8/1/23.

BW	WW	YW	REA	FT	IMF
80 (100%)	695 (100%)	1070 (100%)	10.32 (100%)	0.26 (100%)	3.25 (100%)

CED	BW	WW	YW	M	TM	CEM	SC	REA	IMF	FT	Hfr Prg	Stay	CowWt	TI	FI
1.3	0.5	35	63	11	29	1.76	0.69	0.36	0.22	0.025	5.39	1.79	-3.45	3.34	3.1
85%	50%	10%	10%	30%	10%	95%	30%	20%	20%	95%	20%	20%	40%	10%	20%

She is sired by Relax who is an embryo full brother to the dam of the popular Monument 10D7 bull. Her dam is the best donor cow we have owned in regards to fertility, easy fleshing, and making attractive bulls that are the first picks every year. Her embryo full sister produced our 919J9 herd sire that is 3/4 in blood to Monument. She has 11 traits in the top 35% of the breed. 919F2 blood tested safe in calf from AI to the popular Center Section 7F7 for a spring calf and it should be a good one.

Breeding: All'd to BWCC Center Section 7F7, UB10411375 on 6/27/23.

124 GBF MS HOOVER 922E2

Born: 8/28/17 R10367143 Gen:6 PHN:922E2 From M Quick Farms

HOOVER OF MAJESTIK 535Z4
R10210657

BRAZILE OF BRINKS 535U13
MS SVF R532 535X4

GRIESE OF BRINKS 803R27
MISS BRINKS GERONIMO 535K14
TCB CATAWBA WARRIOR R532
SVF 820R8 535 U066
COLE OF BRINKS 14P3
MS BRINKS BLACKHAWK 535P60
GBF MR TYSON NEWSMAN 448
GBF MS ROCK START 374

GBF MS COLE 535575 ROCK 922
R10139891

BRINKS COLE 535575
GBF MS TYSON 448 ROCK 679



BW	WW	YW	REA	FT	IMF
77 (104%)	540 (100%)	812 (99%)			

CED	BW	WW	YW	M	TM	CEM	SC	REA	IMF	FT	Hfr Prg	Stay	CowWt	TI	FI
3.4	-0.5	22	45	24	35	3.72	0.59	0.26	0.12	0.014	-0.24	0.11	-6.66	2.51	2.01
60%	25%	45%	40%	1%	2%	50%	40%	30%	30%	85%	90%	75%	25%	25%	60%

GBF Ms Hoover 922E2 is by Hoover, the good Brazile son out of a Cole daughter with an impressive seven traits in the breed's upper 30%. If you are looking to add milk, look no further because she's top 1% and 2% TM. Ms Hoover 922E2 is a docile, easy-working cow.

Breeding: Confirmed Spring bred to QVF Strategy 535H17, R10460818.

Fall Bred Heifers



VF Ms Chill Factor 000D3 ~ Dam of Lots 137, 143, 207

137 VF MS BROADWAY 000J6

Born: 10/10/21 UB10490629 Gen: 1 PHN: 000J6 From Pine Knot Cattle Co.

T3 BROADWAY 30E
R10367402

HOLLYWOOD OF SALACOA 23A53
MS SALACOA ATLANTA 30B5

NEW VISION OF SALACOA 209Y2
MS SVF PATTON 23Y66
ATLANTA OF SALACOA 488Z
MS BRINKS UNITAS 30T94
RITO 707 OF IDEAL 3407 7075
S A V BLACKCAP MAY 4136
MC GAME CHANGER 127Y42
MC MS QUIET LADY 000550

VF MS CHILL FACTOR 000D3
UB10322496

BRANGLS
GE-EPDS

S A V CHILL FACTOR 1418
VF MS GAME CHANGER 000B4

BW	WW	YW	REA	FT	IMF										
568 (100%)	703 (100%)	6.85 (100%)	0.12 (100%)	4.78 (100%)											
CED	BW	WW	YW	M	TM	CEM	SC	REA	IMF	FT	Hfr Prq	Stay	Cow Wt	TI	FI
5.2	-0.5	35	60	2	20	1.83	1.04	0.22	0.13	0.002	8.2	1.91	-3.69	2.98	3.36
35%	25%	10%	15%	95%	45%	95%	10%	40%	30%	55%	5%	15%	40%	15%	15%

000J6 is an extremely docile, clean-made and moderate-framed bred heifer. She stems from the VF Chill Factor 000D3 donor, who has produced many exceptional offspring for Lee and is sired by T3 Broadway who sold for \$67,000. The pedigree is backed by 13 EPDs in the top 35%. In addition, she sells safe in calf to the \$150,000 MC Blue Blood 129H18, and with semen sales currently limited to the ownership group, this is a great opportunity to infuse Blue Blood genetics into your herd.

Breeding: AI'd to MC Blue Blood 129H18, UB10480215 on 5/31/23. Pasture exposed to ABF Empire 415J2, UB10475167 from 6/12/23 to 8/12/23.



GBF Ms Final E 27H

138 GBF MS FINAL E 27H

Born: 11/23/20 R10474232 Gen: 5 PHN: 27H From Galloway Brangus Farms

COLLINS FINAL E 468C2
R10279787

CB FINAL CUT 924X
OAKS MS CSONKA 468X10

MC REVELATION 129T
RBM MS GUNS 924T3
CSONKA OF BRINKS 30R4
MS BRINKS SONAR 468P58
PATTON OF BRINKS 30T22
SVF MS 23M28
TRACKER OF BRINKS 541M8
DS MS CAROLINE 27Y

DS MS EISENHOWER 27D
R10322317

EISENHOWER OF SALACOA 23Y69
DS MS HOLLY 27A2

BW	WW	YW	REA	FT	IMF										
102 (113%)	390 (100%)	669 (100%)	8.1 (100%)	0.09 (100%)	2.37 (100%)										
CED	BW	WW	YW	M	TM	CEM	SC	REA	IMF	FT	Hfr Prq	Stay	Cow Wt	TI	FI
-0.8	1.8	38	67	6	25	3.1	0.38	0.41	0.15	-0.003	3.86	0.61	3.62	3.3	1.77
95%	85%	10%	10%	75%	25%	70%	60%	15%	25%	35%	35%	60%	80%	10%	70%

With Final Cut and Eisenhower in her pedigree, there is a lot of growth. Her EPDs support this with top 10% WW, YW, 15% REA and 30% IMF. She is pasture exposed to the exciting young sire VF LE Mans 468J64, a Papillon son out of the 468D22 donor

Breeding: Pasture exposed to VF LE Mans 468J65, R10490657 from 12/12/22 to 2/18/23.



DMR Cash Flow 535F30 ~ Sire of Lots 140, 148, 151, 169, 201, 303

140 LETO MS CASH FLOW 99J

Born: 9/20/21 UB10491984 Gen: 1 PHN: 99J From Leto Farms

DMR CASH FLOW 535F30
UB10386538

S A V RESOURCE 1441
MS DMR CORONADO 535A8

RITO 707 OF IDEAL 3407 7075
S A V BLACKCAP MAY 4136
TJM CORONADO 535X
SVF MS 535M31
MC JOHN WAYNE 165N3
MC MS EXTRAVAGANT 889P4
BURTIN'S TRANSFORMER 803G3
MISS BRINKS CUSTER 99F18

WAT NF SAID 99Y
R10217872

BRANGLS
GE-EPDS

MC NUFF SAID 889T50
MISS CRC BT 99R4

BW	WW	YW	REA	FT	IMF										
78 (100%)	645 (100%)	977 (100%)	11.64 (100%)	0.4 (100%)	4.5 (100%)										
CED	BW	WW	YW	M	TM	CEM	SC	REA	IMF	FT	Hfr Prq	Stay	Cow Wt	TI	FI
3.7	0.9	39	72	11	31	1.13	0.23	0.56	0.17	0.03	7.05	1.76	-6.9	3.71	2.87
55%	60%	10%	4%	30%	10%	>95%	75%	4%	25%	>95%	10%	20%	25%	5%	25%

A DMR Cash Flow 535F30 out of the 99 cow family that is genomically superior with 13 traits and indices in the breed's upper 30%, paced by 4% REA and 25% IMF, 10% WW, 4% YW, 30% Milk and 10% TM. With fertility in addition 10% HP and 20% Stay. She sells bred to Sewell Growth Fund 415J122, our \$12,500 choice at the CDP sale.

Breeding: Pasture exposed to Sewells Growth Fund 415J122, UB10497377 from 1/1/23 to 3/1/23. ECD: 11/1/23.

Fall Bred Heifers

141 ERC MS SENATOR 99K2

Born: 2/15/22 UB10510574 Gen:2 PHN:99K2

From East Ridge Cattle

SUHN'S HRF SENATOR 30E80
UB10367585

CB FINAL CUT 924X
SCC MISS MYTTY 30Z5

MC REVELATION 129T
RBM MS GUNS 924T3
MYTTY IN FOCUS
SUHN'S MS DUKE 30M
S A V BISMARCK 5682
S A V MISS BOBBIE 7463
STONEWALL OF RRR 222W6
MS BRINKS DITKA 99528

HRF MS BRUISER 99H62
UB10433625

BRANGUS
GE-EPDS

S A V BRUISER 9164
HRF MS STONEWALL 99D2



SCC Miss Mytty 30Z5 ~ Paternal Grandam of Lot 141

BW	WW	YW	REA	FT	IMF										
70 (100%)	520 (100%)	661 (100%)	8.88 (100%)	0.12 (100%)	2.89 (100%)										
CED	BW	WW	YW	M	TM	CEM	SC	REA	IMF	FT	Hfr Prg	Stay	CowWt	TI	FI
9.3	-2.3	31	62	3	19	2.98	0.87	0.41	0.16	0.011	6.38	1.67	4.41	3.42	2.62
5%	3%	20%	10%	95%	55%	70%	15%	15%	25%	80%	15%	20%	80%	10%	35%

AI sired by Suh'n's HRF Senator 30E80. Goes back to the legendary 30Z5. Big Spread EPDs, 11 traits in the top 25%.

Breeding: Pasture exposed to LM Signal 468J16, R10480606 from 1/16/23 to sale day. Safe in calf.

142 RBF MS BRICKHOUSE 535J2

Born: 9/14/21 R10513101 Gen:2 PHN:535J2

From River Bend Farms

CB TTT BIGHOUSE 60G18
R10417890

SF BRICKHOUSE 909D9
CB MS TRADITION 60C8

SUHN'S FOUNDATION 331Z28
SF MISS LTD 909Z4
CB TRADITION 63A
CB MS CHISHOLM 60A2
CB FINAL CUT 924X
OAKS MS PATTON 302X3
SF ABRAHAM 607W4
SF MISS LTD 535X40

SF MISS THREE D 535D4
R10321158

TJM THREE D 302A
SF MISS ABRAHAM 535A25



SF Miss Three D 535D4 ~ Dam of Lot 142

BW	WW	YW	REA	FT	IMF										
64 (100%)	663 (100%)														
CED	BW	WW	YW	M	TM	CEM	SC	REA	IMF	FT	Hfr Prg	Stay	CowWt	TI	FI
0.3	1.7	49	76	9	33	2.01	0.85	0.34	0.23	0.009	7.41	0.89	-1.47	3.84	1.95
90%	80%	1%	2%	50%	4%	90%	15%	20%	15%	75%	10%	45%	50%	4%	65%

She's a power cow with growth numbers in the top 1% WW and 2% YW with plenty of carcass with 20% REA and 15% IMF. AI exposed to Final Time.

Breeding: AI'd to BWCC Final Time 313H2, R10451991 on 12/17/22. Pasture exposed to VF Take Over 889J2, UB10490626 from 12/22/22 to 3/13/23.



Spring Bred Heifers



MC Quiet Lady 000550

143 VF MS HOSS 000K6

Born: 2/8/22 UB10509165 Gen: 2 PHN: 000K6

From Vanna Farms

MC BIG HOSS 541G50
UB10449616

BWCC BIG TOWN 192B16
MC MS RESOURCE 541A4

MC NUFF SAID 889T50
BWCC MS REVELATION 192W8
S A V RESOURCE 1441
MC MS ROCK STAR 541X10
RITO 707 OF IDEAL 3407 7075
S A V BLACKCAP MAY 4136
MC GAME CHANGER 127Y42
MC MS QUIET LADY 000S50

VF MS CHILL FACTOR 000D3
UB10322496

S A V CHILL FACTOR 1418
VF MS GAME CHANGER 000B4

BRANGUS
GE-EPDS

BW	WW	YW	REA	FT	IMF										
84 (100%)	688 (100%)	820 (100%)	10.4 (100%)	0.21 (100%)	6.87 (100%)										
CED	BW	WW	YW	M	TM	CEM	SC	REA	IMF	FT	Hfr Prq	Stay	Cow Wt	TI	FI
3.8	0.8	40	65	8	28	1.75	1.54	0.41	0.58	0.019	9.74	2.66	4.44	4.32	3.71
55%	60%	5%	10%	60%	15%	95%	1%	15%	2%	90%	2%	4%	80%	2%	10%

An own daughter of our 000D3 donor by Big Hoss who is a full sib to the \$150,000 Five Star. She has 12 traits and indices in the breed's upper 15% most notably 5% WW, 10% YW, 1% SC, 15% REA, 2% IMF, 2% HP, and 4% STAY. It has become a trend in these Vanna Farms pedigrees to see power, carcass, and fertility.

Breeding: AI'd to VF Inferno 468J52, R10490647. Pasture exposed to MC Bed Rock 92J4, UB10507148 from 5/10/23 to 7/30/23.



144 MCB MS PARAGON 110J

Born: 3/16/21 R10474415 Gen: 6 PHN: 110J

From Addison Brangus Farms

TC PARAGON 30D4
R10336252

TJM THREE D 302A
TC MS NEW VISION 30A3

CB FINAL CUT 924X
OAKS MS PATTON 302X3
NEW VISION OF SALACOA 209Y2
TC MS NIMITZ 30X
SINGLETARY OF BRINKS 675R
MS BRINKS BS 607L11 392S85
MR LEAD N JOHN WAYNE 21R3
PB MS PATH SHADOW 110M1

RYR MS SINGLE LEAD 110A
R10238276

SOUTHERN SINGLETARY 392U2
PB MS LEAD PATHS SHADOW 110U

BRANGUS
GE-EPDS

BW	WW	YW	REA	FT	IMF										
76 (99%)	524 (93%)	694 (86%)	7.99 (90%)	0.08 (71%)	1.29 (85%)										
CED	BW	WW	YW	M	TM	CEM	SC	REA	IMF	FT	Hfr Prq	Stay	Cow Wt	TI	FI
3.1	0.2	28	47	6	21	2.89	0.25	0.37	0.06	-0.006	4.41	0.55	-0.55	2.32	1.88
65%	40%	25%	35%	75%	40%	75%	75%	20%	45%	20%	30%	60%	55%	30%	65%

110J is a well-made female with lots of bone, depth and thickness. She has nine EPD traits in the breeds top 45% or better including top 20% REA, 25% WW and 35% YW.

Breeding: AI'd to Connealy Capitalist on 5/18/23. Pasture exposed to ABF Empire 23K, R10504952 from 6/1/23 to 7/28/23. Safe to 23K.



SHCC Ms Rail Car 111K5

145 SHCC MS RAIL CAR 111K5

Born: 3/16/22 R10521941 Gen: 2 PHN: 111K5

From Saddle Hill Cattle Co.

BWCC RAIL CAR 430E5
R10367871

MC HALESTORM 889C51
IFCC MS LAUNCH PAD 430C19

MC CHILLY 889A23
IFCC MS REDEMPTION 889Z2
MC LAUNCH PAD 129Y12
MS IRON FARM 789G5-430S19
MC CROSSOVER 834Y
MC MS LUCIA 541U
MC RIGHTEOUS 924X2
MC MS STRYKER 111U25

HF MS CROSS FIT 111G2
R10436060

BWCC CROSS FIT 541B28
BWCC MS RIGHTEOUS 111A2

BRANGUS
GE-EPDS

BW	WW	YW	REA	FT	IMF										
75 (110%)	575 (104%)	880 (106%)	10.97 (109%)	0.29 (100%)	4.94 (93%)										
CED	BW	WW	YW	M	TM	CEM	SC	REA	IMF	FT	Hfr Prq	Stay	Cow Wt	TI	FI
-1.2	3.4	43	71	6	28	2.2	1.24	0.5	0.39	0.034	3.86	1.29	3.61	3.87	2.05
95%	>95%	3%	4%	75%	15%	90%	3%	10%	10%	>95%	35%	35%	80%	4%	60%

Sired by BWCC Rail Car 430E5 and out of a Cross Fit daughter. It will come as no surprise to you to see her 3% WW, 4% YW, 3% SC, 10% REA and IMF, accompanied by 35% HP and Stay.

Breeding: AI'd to MC Bed Rock 541G20, UB10449664 on 7/25/23. Pasture exposed to SHCC Big Lake 10K3, UB10521935 and to SHCC McQueen 889K3, UB10503185 from 8/9/23 to sale day.

Spring Bred Heifers

146 ABF MS BLACKSTONE 13K

Born: 3/16/22 R10504940 Gen: 5 PHN: 13K From Addison Brangus Farms

ABF BLACKSTONE 23G2
R10410461

BWCC MONUMENT 10D7
QCB MS NUFF SAID 23Z13

MC BOULDER 889Z14
BWCC MS RESOURCE 10A10
MC NUFF SAID 889T50
SVF MS LEADGUN 23S85
SR CADENCE WARRIOR H823
SR WARRIOR PRINCESS N332
SUCCESS OF CAMP COOLEY 55H
SMR MISS RIGHT TIME 131D8

MS SVF WARRIOR 13W
R10151525

BRANGUS
GE-EPDS

TCB CATAWBA WARRIOR R532
TF MS 13N

BW	WW	YW	REA	FT	IMF										
72 (106%)	593 (103%)	920 (110%)	10.91 (112%)	0.36 (149%)	4.63 (127%)										
CED	BW	WW	YW	M	TM	CEM	SC	REA	IMF	FT	Hfr Prg	Stay	Cow Wt	TI	FI
4.2	-0.1	34	63	18	35	1.46	0.9	0.52	0.37	0.047	2.33	1.18	-11	3.9	2.63
50%	30%	15%	10%	4%	2%	95%	15%	5%	10%	>95%	55%	35%	10%	4%	35%

Blackstone daughters are finally here! She has 14 EPD traits in the breeds top 35% or better. Top 4% Milk, 5% REA, 10% YW, and 15% WW with a breed average birth weight.

Breeding: Al'd to CB Masterpiece 2051F, UB10383790 on 5/18/23. Pasture exposed to ABF Empire 23K, R10504952 from 6/1/23 to 7/28/23. Safe to AI date.

147 BCC MS DYNAMIC 188K3

Born: 3/17/22 R10515350 Gen: 5 PHN: 188K3 From Black Oak Brangus

DMR JRT DYNAMIC 30G36
R10434661

DMR EMPIRE 795D12
MS DMR CHAIRMAN 30C2

TJM THREE D 302A
MS DMR JETHRO 795Y2
DMR THE CHAIRMAN 415A11
SUHN'S MISS PATTON 30X6
CRC GUARDIAN 9U8U5
WR MS DUKE 594S7
MC REVELATION 129T
QCB MS CSONKA 188Y22

ABF MS DEFENDER 188D3
R10333002

DMR DEFENDER 594A20
ABF MS REVELATION 188B1

BW	WW	YW	REA	FT	IMF										
69 (99%)	705 (99%)	850 (99%)													
CED	BW	WW	YW	M	TM	CEM	SC	REA	IMF	FT	Hfr Prg	Stay	Cow Wt	TI	FI
2	2	43	70	5	27	0.95	0.33	0.03	0.013	7.59	1.52	4.7	3	2.33	
75%	90%	3%	5%	85%	15%	10%	20%	55%	80%	10%	25%	80%	15%	45%	

Sired by DMR JRT Dynamic 30G36 and out of a power cow from Addison, with an intriguing genomic profile. Eight traits and indicators in the breed's upper 25%, plenty of gas here with 3% and 5% WW and YW, respectively. 10% Heifer Preg and 25% Stayability.

Breeding: Al'd to MC Profit 924B16, R10276882 on 8/15/23. Pasture exposed to HRF MR Edge 99D, R10314383.

148 JRT MS CASHFLOW 23K

Born: 2/8/22 UB10506034 Gen: 1 PHN: 23K From JRT Brangus

DMR CASH FLOW 535F30
UB10386538

S A V RESOURCE 1441
MS DMR CORONADO 535A8

RITO 707 OF IDEAL 3407 7075
S A V BLACKCAP MAY 4136
TJM CORONADO 535X
SVF MS 535M31
LEAD GUN OF BRINKS 222K14
MISS BRINKS UPPERCUT 30L18
MC NUFF SAID 889T50
SVF MS LEADGUN 23S85

JRT MS CSONKA 23F4
R10393483

BRANGUS
GE-EPDS

CSONKA OF BRINKS 30R4
QCB MS NUFF SAID 23Z13

BW	WW	YW	REA	FT	IMF										
91 (115%)	758 (112%)	1012 (109%)	10.52 (106%)	0.49 (143%)	3.42 (112%)										
CED	BW	WW	YW	M	TM	CEM	SC	REA	IMF	FT	Hfr Prg	Stay	Cow Wt	TI	FI
0.2	2.6	49	80	9	34	0.65	0.35	0.58	0.27	0.026	7.96	1.84	-1.95	4.16	2.72
90%	95%	1%	2%	50%	3%	>95%	65%	3%	15%	95%	10%	15%	45%	3%	30%

She is a powerhouse UB2 female sired by Cash Flow. On her dam side, she is a granddaughter of the Nuff Said 23Z13 donor from ABF. She boasts 10 EPDs in the top 30% led by top 1% WW and YW, 2% Terminal, 3% REA and Heifer Pregnancy, 4% TM, 15% IMF, and 30% Fertility. She backs those EPDs up with her strong performance with a 758 actual WW to ratio (112), 1012 YW (109), and ratio (106) REA, and (112) ratio for IMF. With her power, phenotype, and royally bred pedigree she has donor written all over her. We AI'd her to the now-deceased DMR JRT Dynamic 30G36 who is doing a great job and this mating should be spectacular!

Breeding: Al'd to DMR JRT Dynamic 30G36, R10434661 on 5/8/23. Pasture exposed to DMR Eldorado 30B15, R10284830 from 5/21/23 to 7/22/23.



JRT Ms Cashflow 23K

149 JRT MS ELDORADO 24K

Born: 3/18/22 R10506043 Gen: 5 PHN: 24K From JRT Brangus

DMR ELDORADO 30B15
R10284830

TJM CORONADO 535X
SUHN'S MISS PATTON 30X6

CB HOMBRE 541T3
MS BRINKS LAMBERT 535T4
PATTON OF BRINKS 30T22
SUHN'S MS DUKE 30M
GARRETT OF BRINKS 789P
CNF MISS ROCKY 289R
MC JETHRO 00S3
MS BRINKS CADENCE 24R8

QCB MS 24A8-ET
R10267472

BRANGUS
GE-EPDS

QCB-BBF CHATTOOGA 289U2
BWCC MS JETHRO 24X3

BW	WW	YW	REA	FT	IMF										
76 (96%)	686 (101%)	952 (103%)	9.48 (96%)	0.31 (92%)	3.08 (101%)										
CED	BW	WW	YW	M	TM	CEM	SC	REA	IMF	FT	Hfr Prg	Stay	Cow Wt	TI	FI
7.9	-0.8	20	42	2	12	3.87	0.84	-0.09	0.11	-0.003	6.38	1.6	-6.13	1.93	3.32
10%	20%	50%	45%	95%	85%	45%	20%	85%	35%	35%	15%	25%	25%	45%	15%

24k is a moderate female sired by Eldorado who posts 15 EPDs breed average or better. Balance and consistency led by top 10% CED, 15% SC, Heifer Pregnancy, Fertility, 20% BW, 35% IMF and Fat. She comes from a very fertile cow family with a great disposition. These Eldorado daughters are flat-out getting it done! Her full sibs have averaged \$5250 in past sales.

Breeding: Al'd to CB Growth Fund 2051G11, UB10418754 on 5/8/23. Pasture exposed to TTT JRT Payback 541J34, UB10497456 from 5/21/23 to 7/22/23.



CB Growth Fund 2051G11 ~ AI Service Sire of Lot 149

Spring Bred Heifers

150 JF MS GOVERNESS 24K1

Born: 1/20/22 R10509916 Gen:5 PHN:24K1 From Jackson Farms

SALACOA HANNIBAL 332B25
R10280020

HANNIBAL OF BRINKS 784T6
TCB KIOWA PRINCESS U435

CSONKA OF BRINKS 30R4
MS BRINKS GOOD FORTUNE 784N9
SR CADENCE WARRIOR P456
SR WARRIOR PRINCESS N332
BLANDA OF BRINKS 535R54
MISS HD 314 263J2
MC JETHRO 00S3
MS BRINKS CADENCE 24R8

QCB MS 24A19-ET
R10267460

QCB/WAT ESTANCIA 263X4
BWCC MS JETHRO 24X3

BW	WW	YW	REA	FT	IMF												
65 (93%)	632 (102%)	1086 (100%)	11.42 (100%)	0.56 (100%)	4.05 (100%)												
CED	BW	WW	YW	M	TM	CEM	SC	REA	IMF	FT	Hfr	Prg	Stay	Cow	Wt	TI	FI
8.9	-1.6	17	40	18	27	3.53	0.48	0.23	0.01	0.009	5.46	1.14	-5.73	2.03	2.76		
10%	10%	65%	50%	4%	15%	55%	50%	35%	60%	75%	20%	40%	25%	40%	30%		

Sired by a Hannibal son out of one of the three founding members of the 332 cow family at Salacoa Valley, U435, and own daughter of N332. To be expected from that line bred tribe her genomic profile is full of balance with eight traits in the population's 35th percentile.

Breeding: Pasture exposed to JF HH Mountain 924J, R10510374 and to BWCC Lucas 192H75, UB10472347 from 8/1/23 to 10/10/23.

151 BHF MISS CASH FLOW

Born: 1/28/22 UB10492062 Gen:1 PHN:300K From Boot Hill Farms

DMR CASH FLOW 535F30
UB10386538

S A V RESOURCE 1441
MS DMR CORONADO 535A8

BHF MS 300H
R10448363

CCC SOMETHING SPECIAL 803A5
JD MS CHEROKEE 300D

RITO 707 OF IDEAL 3407 7075
S A V BLACKCAP MAY 4136
TJM CORONADO 535X
SVF MS 535M31
MC SOMETHING SPECIAL 129W14
MS BRINKS ALI 803M
IH MR CHEROKEE 535Z2
MF MISS JESSE 300A5

BW	WW	YW	REA	FT	IMF												
64 (88%)	629 (100%)																
CED	BW	WW	YW	M	TM	CEM	SC	REA	IMF	FT	Hfr	Prg	Stay	Cow	Wt	TI	FI
4.3	0.4	38	66	8	27	0.43	0.5	0.17	0.02	4.62	1.31	-4.92	3.45	2.57			
50%	45%	10%	10%	60%	15%		55%	10%	25%	90%	30%	30%	30%	30%	10%	35%	

Impressive EPDs in this DMR Cash Flow 535F30 daughter with 10 traits and indices in the upper 30% of the breed. Notably 10% WW, YW, REA, and Term.

Breeding: AI'd to DMR Kingdom 535G45, R10434685 on 5/5/23. Pasture exposed to ABF Blackstone 134K2, R10504938 from 5/20/23 to 8/15/23.



BHF Miss Empire 300K2

152 BHF MISS EMPIRE 300K2

Born: 2/7/22 R10492072 Gen:5 PHN:300K2 From Boot Hill Farms

DMR EMPIRE 795D12
R10323531

TJM THREE D 302A
MS DMR JETHRO 795Y2

JD MS CHEROKEE 300D
R10309371

IH MR CHEROKEE 535Z2
MF MISS JESSE 300A5

CB FINAL CUT 924X
OAKS MS PATTON 302K3
MC JETHRO 00S3
MS BRINKS UPPERCUT 795R9
IH AFFIRMED 847W
IH MS ABBEY 535W7
JESSE OF BRINKS 392P105
MF MISS YOEMAN 300R6

BW	WW	YW	REA	FT	IMF												
72 (99%)	657 (107%)																
CED	BW	WW	YW	M	TM	CEM	SC	REA	IMF	FT	Hfr	Prg	Stay	Cow	Wt	TI	FI
8.4	-0.3	30	50	3	18	5.07	0.62	0.3	-0.06	0.006	8.31	1.53	1.02	2.05	2.48		
10%	25%	20%	30%	95%	60%	15%	35%	25%	85%	65%	5%	25%	65%	40%	40%		

She's a DMR Empire 795D12 daughter and a balanced rig having nine traits and indices in the upper 35% of the breed. AI exposed to DMR Kingdom 535G45.

Breeding: AI'd to DMR Cash Flow 535F30, UB1038653 on 5/6/23. Pasture exposed to ABF Blackstone 134K2, R10504938 from 5/20/23 to 8/15/23.



BWCC Center Section 7F7~ Service Sire of Lots 136, 153

153 MCB MS STUNNER 302K3

Born: 2/10/22 UB10507757 Gen:1 PHN:302K3 From Magnolia Creek Brangus

MCB STUNNER 468G8
UB10431020

MUSGRAVE 316 STUNNER
MS SOUTHERN JET 468Y9

MS SOUTHERN LAMBERT 302W13
R10169863

LAMBERT OF BRINKS 317R3
MISS BRINKS GERONIMO 302H6

LD CAPITALIST 316
MCATL BLACKBIRD 831-1378
MC JETHRO 00S3
MS BRINKS BS 607L11 468S77
LEAD GUN OF BRINKS 222K14
MS BRINKS GOOD FORTUNE 317M
GERONIMO OF BRINKS 392F15
MISS BB BRIGHT PROMISE 302E4

BW	WW	YW	REA	FT	IMF												
66 (90%)	502 (96%)	713 (99%)															
CED	BW	WW	YW	M	TM	CEM	SC	REA	IMF	FT	Hfr	Prg	Stay	Cow	Wt	TI	FI
6.8	-1.4	19	38	9	18	3.38	0.6	0.22	0.23	0.014	4.09	1.46	-7.16	2.34	3.1		
20%	10%	55%	55%	50%	60%	60%	35%	40%	15%	85%	35%	25%	20%	30%	20%		

Her maternal grandam is the famous 302H6 cow. Her dam is one of the most attractive, docile, and easy-keeping cows we have ever owned and at the age of 13 she is still producing some of our best calves. This heifer has a tremendous pedigree for fertility, carcass quality, calving ease and docility. Her paternal grandam is still a top producer at 12 years old. 302K3 blood tested and palpated safe to the popular Center Section for a spring calf and it should be a good one.

Breeding: AI'd to BWCC Center Section 7F7, UB10411375 on 6/13/23. Pasture exposed to MCB Boulder 919J9, R10482521 from 6/27/23 to 8/5/23. Safe to AI date.

Spring Bred Heifers

154 BHF MISS BIG TOWN 386J

Born: 2/8/21 R10480857 Gen: 4 PHN: 386J From Boot Hill Farms

BWCC BIG TOWN 192B16
R10266676

MC NUFF SAID 889T50

BWCC MS REVELATION 192W8

MC JOHN WAYNE 165N3
MC MS EXTRAVAGANT 889P4
MC REVELATION 129T
MISS 4C LEAD GUN 192P4
MC ELEGIDO 924W6
BWCC MS LEAD GUN 889W26
IRON FARM 789G5-430R4
MS IRON FARM 44G-386P

TE MS CRUISE 386C
R10296166

BWCC CRUISE 889Z28

MS IRON FARM 430R4 386W

BW	WW	YW	REA	FT	IMF											
66 (92%)	588 (96%)	640 (85%)	8.99 (88%)	0.3 (80%)	2.41 (80%)											
CED	BW	WW	YW	M	TM	CEM	SC	REA	IMF	FT	Hfr	Prg	Stay	CowWt	TI	FI
8.9	-1.2	21	35	7	18	2.94	0.18	0.32	-0.01	0.015	8.75	1.93	-0.29	1.65	2.86	
10%	10%	50%	65%	70%	60%	75%	80%	25%	70%	85%	4%	15%	55%	55%	25%	

Got one round of AI last year and no bull. Don't hold that against her. Confirmed bred to Empire by blood test. Her Cruise dam is a can't miss producer that gives us one of the best calves in the pasture every year

Breeding: AI'd to DMR Empire 795D12, R10323531 on 5/5/23. Pasture exposed to ABF Blackstone 134K2, R10504938 from 5/20/23 to 8/15/23.



BHF Miss Big Town 386J

155 BHF MISS EMPIRE 430K

Born: 2/12/22 R10492074 Gen: 5 PHN: 430K From Boot Hill Farms

DMR EMPIRE 795D12
R10323531

TJM THREE D 302A

MS DMR JETHRO 795Y2

CB FINAL CUT 924X
OAKS MS PATTON 302X3
MC JETHRO 00S3
MS BRINKS UPPER CUT 795R9
MC REDEMPTION 192W22
MS IRON FARM 2K4 036U
BURTIN'S TRANSFORMER 803G3
S.B. MS PATHFINDER 430H18

TE MS STATEMENT 430CS
R10296167

BWCC STATEMENT 036Z

MS IRON FARM 803G3-430R

BW	WW	YW	REA	FT	IMF											
88 (122%)	664 (108%)															
CED	BW	WW	YW	M	TM	CEM	SC	REA	IMF	FT	Hfr	Prg	Stay	CowWt	TI	FI
0.4	2.9	35	55	3	21	3.53	0.61	0.24	-0.03	0.006	7.38	2.1	3.23	2	3.22	
90%	95%	10%	20%	95%	40%	55%	35%	35%	75%	65%	10%	15%	75%	40%	15%	

Here is another Empire from Boot Hill tracing her lineage back to the 430 cow family. It seems to be a trend currently to have plenty of power, carcass and fertility.

Breeding: AI'd to DMR Cash Flow 535F30, UB1038653 on 5/5/23. Pasture exposed to ABF Blackstone 134K2, R10504938 from 5/20/23 to 8/15/23.



BHF Miss Empire 430K

156 ELC MS DYNAMIC 535J4

Born: 12/6/21 R10486106 Gen: 6 PHN: 535J4 From EC Brangus, LLC

DMR JRT DYNAMIC 30G36
R10434661

DMR EMPIRE 795D12

MS DMR CHAIRMAN 30C2

TJM THREE D 302A
MS DMR JETHRO 795Y2
DMR THE CHAIRMAN 415A11
SUHN'S MISS PATTON 30X6
CB FINAL CUT 924X
OAKS MS PATTON 302X3
CB PASSPORT 803Y11
CLVR MISS COCO 535W2

ELC MS THREE D 535F4
R10392423

TJM THREE D 302A

ELC MS PASSPORT 535D24

BW	WW	YW	REA	FT	IMF											
71 (103%)	602 (100%)	690 (100%)	9.59 (100%)	0.28 (100%)	4.14 (100%)											
CED	BW	WW	YW	M	TM	CEM	SC	REA	IMF	FT	Hfr	Prg	Stay	CowWt	TI	FI
3.5	1.3	39	61	2	21	2.36	0.85	0.26	-0.03	0.016	8.01	1.37	4.09	2.4	1.97	
60%	75%	10%	15%	95%	40%	85%	15%	30%	75%	85%	10%	30%	80%	30%	60%	

This heifer is parent-verified and low birth weight. She is a feminine Dynamic daughter out of a 3D dam. She is gentle and easy to handle. She ranks in top 20% of breed for WW, YW and Heif. Preg. This heifer has some of the most sought-after genetics in her bloodline, i.e. Dynamic, 3D, Passport, Empire and Patton.

Breeding: AI'd to BWCC Black Top 192G22, R10444674 on 7/3/23. Confirmed safe - 3 months bred on sale day.



ELC Ms Dynamic 535J4

Spring Bred Heifers

157 BHF MISS PROFIT 536K

Born: 2/7/22 UB10492073 Gen:1 PHN: 536K

From Boot Hill Farms

MC PROFIT 924B16
R10276882

MC CROSSOVER 834Y
RBM MS JETHRO 924U2

LAMBERT OF BRINKS 317R3
MC MS GUNS 834W3
MC JETHRO 0053
MISS NMSU 924
S A V FINAL ANSWER 0035
S A V BLACKBIRD 5297
MC CONVERSION 889Z20
MS IRON FARM ALIAS 536X

TE MS PIONEER 536C7
UB10326125

S A V PIONEER 7301
TE MS CONVERSION 536B3

BW	WW	YW	REA	FT	IMF										
67 (93%)	651 (106%)														
CED	BW	WW	YW	M	TM	CEM	SC	REA	IMF	FT	Hfr Prg	Stay	Cow Wt	TI	FI
5.9	0.3	35	47	1	18	4.38	1	0.35	0.13	0.006	7.91	1.77	1.42	2.41	2.86
30%	45%	10%	35%	>95%	60%	30%	10%	20%	30%	65%	10%	20%	65%	30%	25%

BHF Miss Profit 536K writes another solid genomic profile with 12 traits and indices in the breed's upper 35%. Again, growth, carcass, and fertility.

Breeding: AI'd to DMR Kingdom 535G45, R10434685 on 5/5/23. Pasture exposed to ABF Blackstone 134K2, R10504938 from 5/20/23 to 8/15/23.

158 BHF MISS SOGGY 541K2

Born: 3/2/22 R10509935 Gen:1 PHN: 541K2

From Boot Hill Farms

BWCC SOMETHING SOGGY 24E
R10383257

BWCC SOMETHING SOGGY 111A4
BWCC MS BRAND NAME 24B3

MC SOMETHING SPECIAL 129W14
MC MS STRYKER 111U25
BWCC BRAND NAME 889Z48
BWCC MS REDEMPTION 24Z5
S A V POTENTIAL 0205
BWCC MS JETHRO 812W
MC NEW DIRECTION 000 M24
MC MS JOHN WAYNE 541P2

TE MS PURPOSE 541D3
UX10326142

BWCC POTENTIAL 812A8
LL MS NEW DIRECTION 541U3

BW	WW	YW	REA	FT	IMF										
71 (98%)	634 (103%)														
CED	BW	WW	YW	M	TM	CEM	SC	REA	IMF	FT	Hfr Prg	Stay	Cow Wt	TI	FI
6.4	0.3	22	50	11	23	1.21	0.43	0.11	0.017	6.07	1.88	1.88	8.18	2.58	2.89
25%	45%	45%	30%	30%	30%	3%	15%	35%	90%	15%	15%	90%	25%	25%	

She's a Something Soggy out of the 541 tribe with 12 impressive traits and indices in the breed's upper 30%. Note her top 30% Milk.

Breeding: AI'd to DMR Empire 795D12, R10323531 on 5/5/23. Pasture exposed to ABF Blackstone 134K2, R10504938 from 5/20/23 to 8/15/23.



BHF Miss Foundation 55K2

159 BHF MISS FOUNDATION 55K2

Born: 2/17/21 R10480865 Gen:1 PHN: 55K2

From Boot Hill Farms

SUHN'S FOUNDATION 331Z28
R10227112

GR SWIFT 209W3
SUHN'S MISS BT 331S43

LAMBERT OF BRINKS 317R3
MS BRINKS BRIGHT SIDE 209L11
BURTIN'S TRANSFORMER 803G3
SUHN'S MS CADENCE 331M3
S A V RESOURCE 1441
MC MS EXTRAVAGANT 889X6
CRC-IFCC MAGNUM 331T
MISS IRON FARM 314C-55N4

TE MS RESET 55D
UB10326137

MC RESET 889A21
MS IRON FARM MAGNUM 55X6

BW	WW	YW	REA	FT	IMF										
77 (107%)	589 (96%)	740 (99%)	10.18 (100%)	0.51 (136%)	4.59 (152%)										
CED	BW	WW	YW	M	TM	CEM	SC	REA	IMF	FT	Hfr Prg	Stay	Cow Wt	TI	FI
-0.3	2	25	46	6	19	4.75	0.48	0.27	0.34	0.031	4.76	1.12	-0.28	2.62	1.81
90%	90%	35%	35%	75%	55%	20%	50%	30%	10%	>95%	25%	40%	55%	25%	70%

Got one round of AI last year and no bull. Don't hold that against her. Confirmed bred to Empire by a blood test. Really good heifer here out of a great Reset daughter.

Breeding: AI'd to DMR Empire 795D12, R10323531 on 5/5/23. Pasture exposed to ABF Blackstone 134K2, R10504938 from 5/20/23 to 8/15/23.



DMR Empire 795D12 ~ Sire of Lots 152, 155, 160, 163, 188, 208

160 BHF MISS EMPIRE 55K

Born: 2/14/22 R10492075 Gen:1 PHN: 55K

From Boot Hill Farms

DMR EMPIRE 795D12
R10323531

TJM THREE D 302A
MS DMR JETHRO 795Y2

CB FINAL CUT 924X
OAKS MS PATTON 302X3
MC JETHRO 0053
MS BRINKS UPPERCUT 795R9
S A V RESOURCE 1441
MC MS EXTRAVAGANT 889X6
CRC-IFCC MAGNUM 331T
MISS IRON FARM 314C-55N4

TE MS RESET 55D
UB10326137

MC RESET 889A21
MS IRON FARM MAGNUM 55X6

BW	WW	YW	REA	FT	IMF										
72 (99%)	631 (103%)														
CED	BW	WW	YW	M	TM	CEM	SC	REA	IMF	FT	Hfr Prg	Stay	Cow Wt	TI	FI
6.7	-0.2	27	43	1	14	3.56	0.59	0.22	0.13	0.015	8.81	2.31	1.88	2.14	3.19
20%	30%	30%	45%	>95%	80%	55%	40%	40%	30%	85%	3%	10%	70%	35%	15%

An Empire daughter out of the 55 cow family, made famous at Willow Springs. She's extreme only in her balance. Moderate in stature with ample muscle and plenty of fertility.

Breeding: AI'd to DMR Cash Flow 535F30, UB10386538 on 5/5/23. Pasture exposed to ABF Blackstone 134K2, R10504938 from 5/20/23 to 8/15/23.

Spring Bred Heifers

161 ABF MS RAINDANCE 568K

Born: 3/12/22 UB10504947 Gen: 1 PHN: 568K From Addison Brangus Farms

SAV RAINDANCE 6848
EA18578965

COLEMAN CHARLO 0256
SAV BLACKCAP MAY 4136

OCC PAXTON 730P
BOHI ABIGALE 6014
SAV 8180 TRAVELER 004
SAV MAY 2397
CONKA OF BRINKS 30R4
MISS 4L BEST BET 9U8P5
MB CRUSADER 17W9
MB MS ANCHOR 568W

ABF MS GUARDIAN 568C
R10289013

CRC GUARDIAN 9U8U5
MB MS CRUSADER 568Z3

BRANGUS
GE-EPDS

BW	WW	YW	REA	FT	IMF										
64 (94%)	627 (109%)	880 (105%)	9.87 (102%)	0.2 (85%)	2.92 (80%)										
CED	BW	WW	YW	M	TM	CEM	SC	REA	IMF	FT	Hfr Prg	Stay	CowWt	TI	FI
4.4	1.2	49	83	6	31	3.46	0.88	0.52	0.09	0.012	5.72	1.96	5.72	3.94	3.07
45%	70%	1%	1%	75%	10%	55%	15%	5%	40%	80%	20%	15%	85%	4%	20%

This thick and deep-made SAV Raindance daughter has 13 EPD traits in the breeds top 40% or better, including top 1% WW and YW, 3% Term, 4% REA and 35% IMF. Her dam is a cow that we hope to keep in our herd for many more years. She is an easy keeper and has a 366-day calving interval on her six calves.

Breeding: AI'd to DMR Empire 795D12, R10323531 on 5/18/23. Pasture exposed to ABF Empire 23K, R10504952 from 6/1/23 to 7/28/23. Safe to AI date.



ABF Ms Raindance 568K

162 BCC MS BEACON 568K

Born: 3/31/22 R10515349 Gen: 1 PHN: 568K From Black Oak Brangus

SUHN'S MAJESTIK BEACON 30C
UB10292617

TJM THREE D 302A
SCC MISS MYTTY 30Z5

CB FINAL CUT 924X
OAKS MS PATTON 302X3
MYTTY IN FOCUS
SUHN'S MS DUKE 30M
CADENCE OF BRINKS
SVF MS 23M28
MB CRUSADER 17W9
MB MS ANCHOR 568W

ABF MS ON TASK 568E
R10346649

ON TASK OF SALACOA 23Y42
MB MS CRUSADER 568Z3

BW	WW	YW	REA	FT	IMF										
71 (102%)	731 (102%)	860 (101%)													
CED	BW	WW	YW	M	TM	CEM	SC	REA	IMF	FT	Hfr Prg	Stay	CowWt	TI	FI
0.5	2.2	48	80	5	29	3.79	0.82	0.28	0.01	0.017	9.35	1.92	9.07	3.33	2.39
90%	90%	1%	2%	85%	10%	45%	20%	30%	60%	90%	2%	15%	95%	10%	45%

Big-time growth in this Beacon daughter. Top 1% WW and 2% YW with fertility built in 2% HP and 15% Stay.

Breeding: AI'd to MC Profit 924B16, R10276882 on 8/15/23. Pasture exposed to HRF Mr Edge 99D, R10314383 from 8/22/23 to sale day.



BCC Ms Beacon 568K

163 JRT MS EMPIRE 624K

Born: 2/10/22 R10506035 Gen: 5 PHN: 624K From JRT Brangus

DMR EMPIRE 795D12
R10323531

TJM THREE D 302A
MS DMR JETHRO 795Y2

CB FINAL CUT 924X
OAKS MS PATTON 302X3
MC JETHRO 00S3
MS BRINKS UPPERCUT 795R9
BLANDA OF BRINKS 535R54
MISS HD 314 263J2
MC REAL DEAL 541R3
CCC MS NEWS DAY 624J

QCB MS 624A-ET
R10267445

QCB/WAT ESTANCIA 263X4
BWCC MS REAL DEAL 624W

BRANGUS
GE-EPDS

BW	WW	YW	REA	FT	IMF										
68 (86%)	697 (103%)	920 (99%)	10.24 (97%)	0.29 (132%)	3.93 (124%)										
CED	BW	WW	YW	M	TM	CEM	SC	REA	IMF	FT	Hfr Prg	Stay	CowWt	TI	FI
9.6	-1.1	24	40	7	19	4	0.5	0.33	0.09	0.025	8.64	1.57	5.07	2.1	1.99
4%	15%	40%	50%	70%	55%	40%	50%	20%	40%	95%	4%	25%	85%	40%	60%

This deep-bodied Empire daughter writes 15 EPDs breed average or better paced by top 5% Heifer Pregnancy, 10% CED, 15% BW, 20% REA, Stay, 35% WW. 624K has calving ease and growth with lots of performance along with a great disposition. We bred her to our exciting young Cash Flow son TTT JRT Payback 541J34 who we own with our good friends at TTT Ranch.

Breeding: AI'd to TTT JRT Payback 541J34, UB10497456 on 5/8/23. Pasture exposed to TTT JRT Payback 541J34, UB10497456 from 5/21/23 to 7/22/23.



JRT Ms Empire 624K

Spring Bred Heifers



BWCC Big Town 192G16 ~ Sire of Lots 154, 164, 179, 190, 200

164 MS SALACOA BIG TOWN 803J32

Born: 10/4/21 R10485070 Gen: 4 PHN: 803J32 From **Truitt Brangus Farms/Vanna Farms**

BWCC BIG TOWN 192B16
R10266676

MC NUFF SAID 889T50

BWCC MS REVELATION 192W8

MS SALACOA HOLLYWOOD 803C7
R10309509

HOLLYWOOD OF SALACOA 23A53

MS BRINKS LOMBARDI 803S25

BRANGUS
GE-EPDS

MC JOHN WAYNE 165N3
MC MS EXTRAVAGANT 889P4
MC REVELATION 129T
MISS 4C LEAD GUN 192P4
NEW VISION OF SALACOA 209Y2
MS SVF PATTON 23Y66
LOMBARDI OF BRINKS 468N10
MISS BRINKS KO 803J

BW	WW	YW	REA	FT	IMF										
68 (92%)	755 (100%)	694 (100%)	9.14 (100%)	0.22 (100%)	4.55 (100%)										
CED	BW	WW	YW	M	TM	CEM	SC	REA	IMF	FT	Hfr Prg	Stay	Cow Wt	TI	FI
9	-1.4	27	46	7	20	2.38	0.8	0.31	0.03	-0.003	12.39	1.89	-2.31	2.32	3.1
10%	10%	30%	35%	70%	45%	85%	20%	25%	55%	35%	1%	15%	45%	30%	20%

In true Big Town style, Ms Salacoa Big Town 803J32 is very feminine and balanced in her genetic makeup. Ranks in top 1% Heifer Preg and 11 traits and indices in the top 35% or higher.

Breeding: Pasture exposed to MC Bed Rock 92J4, UB10507148 from 5/10/23 to 7/30/23.



3S Miss Epic 85J

165 3S MISS EPIC 85J

Born: 12/25/21 UB10500790 Gen: 2 PHN: 85J

From **3 South Farms**

SF EPIC 535G74
UB10438098

SUHN'S EPIC 331D16

SF MISS CONSENSUS 535Z3

KING'S MISS SILVERADO 85F5
UB10404045

BWCC SILVERADO 889D

QCB MS DONNA 85Z

BRANGUS
GE-EPDS

S A V RESOURCE 1441
SUHN'S MISS LTD 331X18
CONNELLY CONSENSUS 7229
SF MISS TIN MAN 535X15
S A V REAL MASSIVE 4879
BWCC MS CROSSOVER 889B12
QCB 280X
QCB MS 85X

BW	WW	YW	REA	FT	IMF										
73 (101%)	620 (107%)	859 (100%)													
CED	BW	WW	YW	M	TM	CEM	SC	REA	IMF	FT	Hfr Prg	Stay	Cow Wt	TI	FI
3	1.1	38	67	10	29	3	0.63	0.45	0.3	0.015	5.45	1.93	5.79	3.73	3.01
65%	65%	10%	10%	40%	10%	70%	35%	10%	10%	85%	20%	15%	85%	5%	20%

She ranks in the oop 10% WW, top 5% YW and top 10% TM.

Breeding: Pasture exposed to Shun's Abstract 30H166, UB10467509 from 5/1/23 to 6/1/23.



SHCC Ms Bocephus 889K5

166 SHCC MS BOCEPHUS 889K5

Born: 2/24/22 UB10521914 Gen: 1 PHN: 889K5

From **Saddle Hill Cattle Co.**

BWCC BOCEPHUS 111C2
UB10305710

S A V REWARD 3198

BWCC MS RIGHTEOUS 111A10

HF MS HOT SHOT 889G12
R10436103

BWCC HOT SHOT 192D31

BWCC MS NUFF SAID 889Z24

BRANGUS
GE-EPDS

S A V RESOURCE 1441
S A V PRISCILLA 6689
MC RIGHTEOUS 924X2
MC MS STRYKER 111U25
BWCC SLICK 7B
BWCC MS STATEMENT 192B48
MC NUFF SAID 889T50
MC MS 5175 BANDO 889P12

BW	WW	YW	REA	FT	IMF										
62 (91%)	568 (102%)	870 (105%)	11.63 (115%)	0.37 (128%)	5.76 (109%)										
CED	BW	WW	YW	M	TM	CEM	SC	REA	IMF	FT	Hfr Prg	Stay	Cow Wt	TI	FI
4.3	0.1	47	85	5	29	3.18	0.8	0.79	0.48	0.055	5.66	1.91	7.68	5.11	1.96
50%	35%	1%	1%	85%	10%	65%	20%	1%	3%	>95%	20%	15%	90%	1%	60%

SHCC Ms Bocephus 889K5 is an outstanding UB2 from the Saddle Hill program. Out of a BWCC Hot Shot 192D31 daughter from the time tested 889 tribe. Going back to one of Mike Coggins and Tracy Holbert's favorite cows of all time, 889P12. She posts an impressive 11 traits and indices in the breed's upper 20%, paced by a whopping four traits in the top 1%.

Breeding: AI'd to MC Powerball 188J, R10485007 on 7/25/23. Pasture exposed to SHCC Big Lake 10K3, UB10521935 and to SHCC McQueen 889K3, UB10503185 from 8/9/23 to sale day.

Spring Bred Heifers

167 ACE MS PERFECT FIT 99K14

Born: 3/15/22 R10499733 Gen: 6 PHN: 99K14 From American Cattle Enterprises

PERFECT FIT OF SALACOA 468G57
R10437568

BWCC CROSS FIT 541B28
MS BRINKS NEW ERA 468P22

MC CROSSOVER 834Y
MC MS LUCIA 541U
NEW ERA OF BRINKS 541J37
MISS BRINKS CADENCE 468G15
LAMBERT OF BRINKS 317R3
MS SVF CADENCE 488X11
NEVER SURRENDER OF SALACOA 803D9
MS SALACOA STONEWALL 99A25

MS SALACOA ATLANTA 99H7
R10446919

BRANGUS
GE-EPDS

BW	WW	YW	REA	FT	IMF											
88 (100%)	570 (100%)	882 (100%)	11.01 (100%)	0.27 (100%)	4.26 (100%)											
CED	BW	WW	YW	M	TM	CEM	SC	REA	IMF	FT	Hfr	Prg	Stay	CowWt	TI	FI
1.2	0.9	39	62	5	24	3.68	1.19	0.59	0.07	0.01	5.77	1.15	2.95	3.03	2.18	
85%	60%	10%	10%	85%	25%	50%	3%	3%	45%	75%	20%	35%	75%	15%	55%	

Here comes a Perfect Fit of Salacoa 468G57, the \$90,000 choice of Quail Valley in the 2020 Salacoa Valley sale and traces her lineage back to the 99P21 donor on the bottom side. Having eight traits in the upper 35% of the breed, paced by 3% SC and REA. As expected with the 99's there's plenty of femininity and maternal. Stacking 468P22 and 99P21 wasn't done by accident.

Breeding: Al'd to Ace of Spades 406J, UB10476024 on 6/15/23. Pasture exposed to Suhn's Triple Crown 416J39, UB10490384 and to BWCC Final Time 313H2, R10451991 from 6/20/23 to 7/31/23.



Perfect Fit of Salacoa 468G57 ~ Sire of Lots 167, 198

169 SEWELLS MS CASH FLOW 99K5

Born: 2/1/22 UB10508499 Gen: 1 PHN: 99K5 From Sewell Cattle Co. Inc.

DMR CASH FLOW 535F30
UB10386538

S A V RESOURCE 1441
MS DMR CORONADO 535A8

RITO 707 OF IDEAL 3407 7075
S A V BLACKCAP MAY 4136
TJM CORONADO 535X
SVF MS 535M31
LEAD GUN OF BRINKS 222K14
MISS BRINKS UPPERCUT 30L18
WR DUKE 228/F
MISS BRINKS TROOPER 99F12

MS DMR GUARDIAN 99A
R10239545

BRANGUS
GE-EPDS

BW	WW	YW	REA	FT	IMF											
60 (100%)	676 (100%)	853 (100%)	10.81 (100%)	0.31 (100%)	4.77 (100%)											
CED	BW	WW	YW	M	TM	CEM	SC	REA	IMF	FT	Hfr	Prg	Stay	CowWt	TI	FI
3.3	1.1	49	85	10	35	0.52	0.77	0.61	0.23	0.015	7.17	1.88	-1.4	4.48	3.18	
60%	65%	1%	1%	40%	2%	>95%	25%	3%	15%	85%	10%	15%	50%	2%	15%	

Take a look at this Power Female that comes to us from Sewell Cattle Company. She's a moderate-framed, big-middled Cash Flow daughter who posts Weaning and Yearling Genomically enhanced EPDs that rank her in the top 1% of the entire breed for both growth traits to go along with her top 3% ranking for Ribeye area and top 15% for Intramuscular fat. Equally as impressive and financially as impactful, she ranks in the top 2% of the breed for Total Maternal and posts a plus 10 Milk EPD, telling us that the Growth Fund heifer calf that she carries in utero will be well taken care of when she comes into the world.

Breeding: Al'd to CB Growth Fund 2051G11, UB10418754 on 5/7/23.



Sewells Ms Cash Flow 99K5

170 ACE MS KINGDOM 99K9

Born: 2/28/22 R10495465 Gen: 5 PHN: 99K9 From American Cattle Enterprises

DMR KINGDOM 535G45
R10434685

DMR EMPIRE 795D12
MS DMR CORONADO 535A8

TJM THREE D 302A
MS DMR JETHRO 795Y2
TJM CORONADO 535X
SVF MS 535M31
MC BOULDER 889Z14
MS BRINKS LOMBARDI 803S25
STONEWALL OF RRR 222W6
SVF MS 99P21

MS SALACOA 99F14
R10381968

BRANGUS
GE-EPDS

BW	WW	YW	REA	FT	IMF											
62 (89%)	482 (101%)	806 (97%)	9.28 (90%)	0.21 (83%)	4.35 (95%)											
CED	BW	WW	YW	M	TM	CEM	SC	REA	IMF	FT	Hfr	Prg	Stay	CowWt	TI	FI
6.8	0.2	28	47	8	22	3.17	0.27	0.22	0	0.019	6.85	1.14	5.3	2.02	1.66	
20%	40%	25%	35%	60%	35%	65%	75%	40%	65%	90%	10%	40%	85%	40%	75%	

Check out the donor cows stacked in this pedigree 535A8, 795Y2, 535M31, 803S25, and 99P21, all of whom have a named AI Sire in their progeny. It's not often you get to own an open heifer who has this much herd sire potential. Take advantage!

Breeding: Al'd to Suhn's Triple Crown 416J39, UB10490384 on 6/15/23. Pasture exposed to Suhn's Triple Crown 416J39 and to BWCC Final Time 313H2, R10451991 from 6/20/23 to 7/31/23.

171 RBF MS STONEWALL 457K

Born: 3/8/22 R10496310 Gen: 4 PHN: 457K From River Bend Farms

PR STONEWALL 129G4
R10410328

STONEWALL OF RRR 222W6
MB MS YELLOWSTONE 129B6

GBF MS ATLANTA 457D
R10320045

ATLANTA OF SALACOA 488Z
GBF MS X-MAN QUITE 457B

CSONKA OF BRINKS 30R4
MS BRINKS LOMBARDI 222S20
MB YELLOWSTONE 17Y2
MB MS INFOCUS 129X12
LAMBERT OF BRINKS 317R3
MS SVF CADENCE 488X11
SVF MR WARRIOR 23X56
CNF MISS SHADOW 457T2

BW	WW	YW	REA	FT	IMF											
72 (96%)	613 (104%)															
CED	BW	WW	YW	M	TM	CEM	SC	REA	IMF	FT	Hfr	Prg	Stay	CowWt	TI	FI
6.6	-0.8	26	48	8	21	3.14	0.72	0.6	0.23	0.019	6.65	1.33	-8.42	2.98	2.67	
20%	20%	30%	35%	60%	40%	70%	25%	3%	15%	90%	15%	30%	15%	15%	35%	

Stonewall breeding on Atlanta, there's a reason she's -0.8 BW and balanced. She has 12 traits and indices in the upper 35% of the breed.

Breeding: Al'd to MC Blue Blood 129H18, UB10480215 on 5/5/23. Pasture exposed to VF Take Over 889J2, UB10490626 from 5/15/23 to 8/7/23.

Open Heifers



172 PKG MS BENNETT BEACON 729K6

Born: 3/13/22 R10492024 Gen: 2 PHN: 729K6 From Pine Knot Cattle Co.

ELC MR BEACON 96F5
R10392422

H+ FINAL CUT LADY E729
R10368236

SUHN'S MAJESTIK BEACON 30C
ELC MS HOMBRE 96A4

CB FINAL CUT 924X
SR CHEROKEE PRINCESS U848

TJM THREE D 302A
SCC MISS MYTTY 30Z5
CB HOMBRE 541T3
MS SVF 23S86 96Y4
MC REVELATION 129T
RBM MS GUNS 924T3
SR CADENCE WARRIOR H823
WT GEMINI M110

BW	WW	YW	REA	FT	IMF										
81 (91%)	581 (100%)	851 (100%)													
CED	BW	WW	YW	M	TM	CEM	SC	REA	IMF	FT	Hfr Prg	Stay	Cow Wt	TI	FI
8.6	-1.6	35	67	5	23	3.36	0.9	0.5	0	0.01	7.36	1.03	12.29	3.26	1.4
10%	10%	10%	10%	85%	30%	60%	15%	10%	65%	75%	10%	40%	>95%	10%	85%

729K6 will be the first heifer wearing the PK brand to sell. Her dam is a Final Cut 924X daughter from Hunts H+, who proved to be an excellent choice for us to help build our new Brangus herd. Much like her dam she is docile and easy to work. 729K6 was right on the edge of being in our spring breeding, but with us needing more in the fall breeding herd we elected to hold her back until fall, so she sells open and ready to breed to the bull of your choice. With seven EPDs in the top 10% of the breed, your most difficult task may be finding a bull that she doesn't work well with.



JF Ms Dominion 000K

173 JF MS DOMINION 000K

Born: 10/28/22 R10536344 Gen: 1 PHN: 000K From Jackson Farms

JRT EMPIRE 624H
R10441687

VF MS GRANITE 000G
UB10416195

DMR EMPIRE 795D12
QCB MS 624A-ET

BWCC GRANITE 889D12
MC MS QUIET LADY 000S50

TJM THREE D 302A
MS DMR JETHRO 795Y2
QCB/WAT ESTANCIA 263X4
BWCC MS REAL DEAL 624W
MC GRANITE 834B
VF MS RESOURCE 889B46
MC JOHN WAYNE 661N13
MC MS FOREFRONT 000N2

BW	WW	YW	REA	FT	IMF										
64 (92%)	638 (111%)														
CED	BW	WW	YW	M	TM	CEM	SC	REA	IMF	FT	Hfr Prg	Stay	Cow Wt	TI	FI
8.2	-0.7	34	51	6	24	4.07	0.24	0.44	0.09	0.02	8.3	2.07	2.56	2.65	2.83
10%	20%	15%	25%	75%	25%	35%	75%	10%	40%	90%	5%	15%	75%	20%	25%

000K is an easy going feminine heifer out of the Vanna Farms 000 family going back to BWCC Granite 889D12 and a maternal granddaughter of MC Ms Quiet Lady 000S50. She is sired by a good Empire son from JRT. She is an easy keeper. She has 10 EPD traits in the ranking in the top 25% of the breed or better.



BWCC Hugo 484H7 ~ Sire of Lots 129, 174

174 VF MS HUGO 000K30

Born: 9/9/22 R10522021 Gen: 1 PHN: 000K30 From Vanna Farms

BWCC HUGO 484H7
R10472434

VF MS ROCK SOLID 000F28
UB10408841

BWCC MCQUEEN 192E24
BWCC MS BOULDER 487B18

BWCC ROCK SOLID 111D
VF MS GAME CHANGER 000B4

BWCC CROSS FIT 541B28
BWCC MS CHILL FACTOR 192A60
MC BOULDER 889Z14
BWCC MS STRYKER 487W4
S A V ROCK SOLID 2251
BWCC MS RIGHTEOUS 111A12
MC GAME CHANGER 127Y42
MC MS QUIET LADY 000S50

BW	WW	YW	REA	FT	IMF										
69 (100%)	645 (100%)														
CED	BW	WW	YW	M	TM	CEM	SC	REA	IMF	FT	Hfr Prg	Stay	Cow Wt	TI	FI
5.3	0	36	66	5	23	4.22	0.96	0.5	0.44	0.038	7.52	2.08	-0.36	4.03	2.79
35%	35%	10%	10%	85%	30%	30%	10%	10%	4%	>95%	10%	15%	55%	3%	30%

VF Ms Hugo 000K30 is out of a young donor in the Vanna program, VF Ms Rock Solid 000F28, whose first two progeny have sold to Phillips and Herndon for \$26,000 and \$17,000, respectively. We are really liking these Hugo progeny. She posts 15 EPDs and indexes in the upper 35%.

Open Heifers

175 LF MS SURRENDER 107K

Born: 5/30/22 R10514345 Gen: 5 PHN: 107K From Lykins Farm

QVF N SURRENDER 150G7
R10427025

DS MS BIG TOWN 107H2
R10448380

NEVER SURRENDER OF SALACOA 803D9
DDD MS NANCY 150U8
BWCC BIG TOWN 192B16
DS MS STATEMENT 107D6
MC BOULDER 889Z14
MS BRINKS LOMBARDI 803S25
SKYHAWKS PRESIDENTE
GTB MS NAOMI 150J
MC NUFF SAID 889T50
BWCC MS REVELATION 192W8
BWCC STATEMENT 036Z
DS MS LILLY 107S

BW	WW	YW	REA	FT	IMF										
71 (104%)															
CED	BW	WW	YW	M	TM	CEM	SC	REA	IMF	FT	Hfr Prg	Stay	Cow Wt	TI	FI
4.1	1.5	28	53	7	21	3.27	0.69	0.4	0	0.01	6.72	1.24	0.03	2.28	2.31
50%	80%	25%	25%	70%	40%	65%	30%	15%	65%	75%	15%	35%	60%	30%	45%

Sired by a Never Surrender son out of the phenotypically flawless DDD Ms Nancy 150U8 donor. LF Ms Surrender 107F is extreme only in her eye appeal and balance with 7 traits and indices in the upper 35%. Being out of the Sneed's 107-cow family, I bet this heifer deserves a halter.

176 LF MS SURRENDER

Born: 5/20/22 R10514343 Gen: 3 PHN: 129K From Lykins Farm

QVF N SURRENDER 150G7
R10427025

MB MS BIG TOWN 129F4
R10404984

NEVER SURRENDER OF SALACOA 803D9
DDD MS NANCY 150U8
BWCC BIG TOWN 192B16
MB MS PASSPORT 129D12
MC BOULDER 889Z14
MS BRINKS LOMBARDI 803S25
SKYHAWKS PRESIDENTE
GTB MS NAOMI 150J
MC NUFF SAID 889T50
BWCC MS REVELATION 192W8
CB PASSPORT 803Y11
MB MS INFOCUS 129X12

BW	WW	YW	REA	FT	IMF										
72 (105%)															
CED	BW	WW	YW	M	TM	CEM	SC	REA	IMF	FT	Hfr Prg	Stay	Cow Wt	TI	FI
3	2.1	34	61	7	25	2.82	0.81	0.49	0.03	0.02	8.41	1.59	4.83	2.71	2.22
65%	90%	15%	15%	70%	25%	75%	20%	10%	55%	90%	4%	25%	80%	20%	50%

She's bred to be powerful with carcass, fertility, and the look. Eight traits rate in the upper 25%, her pedigree is packed with cows that have made a true impact on the breed. Breed good cows to good cows, you get good cows.

177 LETO MS NVR SURRENDER 1373K2

Born: 9/4/22 UB10526496 Gen: 1 PHN: 1373K2 From Leto Farms

NEVER SURRENDER OF SALACOA 803D9
R10318183

RIVERBEND RITA Z1373
EA17311905

MC BOULDER 889Z14
MS BRINKS LOMBARDI 803S25
CONNEALY CONSENSUS 7229
RIVERBEND RITA U1079
MC SOMETHING SPECIAL 129W14
MC MS EXTRAVAGANT 889X4
LOMBARDI OF BRINKS 468N10
MISS BRINKS KO 803J
CONNEALY CONSENSUS
BLUE LILLY OF CONANGA 16
S S OBJECTIVE T510 OT26
FTJ RITA 503

BW	WW	YW	REA	FT	IMF										
76 (100%) 623 (100%)															
CED	BW	WW	YW	M	TM	CEM	SC	REA	IMF	FT	Hfr Prg	Stay	Cow Wt	TI	FI
5.8	0.3	34	72	10	27	4.18	0.65	0.84	0.37	0.037	6.97	2.74	11.36	4.41	3.22
30%	45%	15%	4%	40%	15%	35%	35%	1%	10%	>95%	10%	4%	95%	2%	15%

Outcross genetics coming from LETO Farms. A Never Surrender of Salacoa 803D9 out of the ever so consistent Rita cow family. A very interesting Angus cow on the bottom of this pedigree and when we named Never Surrender, we thought he would work extremely well producing Ultrablack cattle. Take advantage of the goal and own one of the first ones to be sold.

178 BHF MISS OUTBACK 158K

Born: 12/2/22 UB10533263 Gen: 1 PHN: 158K From Boot Hill Farms

BXR/KCC OUTBACK 1302A13
R10235843

BWCC MS MONUMENT 158F32
UB10413730

CB HOMBRE 541T3
OAKS MS CSONKA 1302T
BWCC MONUMENT 10D7
BWCC MS RESOURCE 158B10
SUHN'S AFFIRMED 416N4
MS BRINKS BRIGHT SIDE 541K28
CSONKA OF BRINKS 30R4
WAT CONANC EILEEN 1302P2
MC BOULDER 889Z14
BWCC MS RESOURCE 10A10
S A V RESOURCE 1441
BWCC MS JETHRO 158W

BW	WW	YW	REA	FT	IMF										
74 (100%)															
CED	BW	WW	YW	M	TM	CEM	SC	REA	IMF	FT	Hfr Prg	Stay	Cow Wt	TI	FI
4.5	0.5	28	44	9	23	1.36	1.14	0.24	0.15	0.021	6.07	1.31	0.37	2.25	2.35
45%	50%	25%	40%	50%	30%	>95%	4%	35%	25%	95%	15%	30%	60%	35%	45%

The mating possibilities are endless with this female. She is built for the power bulls of today. Extreme only in her balance with 13 traits and indices in the upper 50% of the breed.

179 ABF MS BIG TOWN 20K

Born: 8/30/22 R10514073 Gen: 4 PHN: 20K From Addison Brangus Farms

BWCC BIG TOWN 192B16
R10266676

ABF MS GUARDIAN 20B
R10277457

MC NUFF SAID 889T50
BWCC MS REVELATION 192W8
CRC GUARDIAN 9U8U5
HF MISS LEAD GUN 20T
MC JOHN WAYNE 165N3
MC MS EXTRAVAGANT 889P4
MC REVELATION 129T
MISS 4C LEAD GUN 192P4
CSONKA OF BRINKS 30R4
MISS 4L BEST BET 9U8P5
BRINKS LEAD GUN 415P44
CLEMS NIMITZ 20P6

BW	WW	YW	REA	FT	IMF										
70 (95%) 647 (98%) 980 (100%)															
CED	BW	WW	YW	M	TM	CEM	SC	REA	IMF	FT	Hfr Prg	Stay	Cow Wt	TI	FI
6.9	-0.3	25	44	9	21	3.45	0.71	0.25	0.07	-0.001	9.61	1.55	3.71	2.21	2.59
20%	25%	35%	40%	50%	40%	55%	25%	35%	45%	40%	2%	25%	80%	35%	35%

This Big Town daughter is out of our most fertile cow family at Addison Brangus Farms. She has 13 EPD traits in the breeds top 40% or better, including top 20% CED, 25% BW, 30% REA and 35% WW. Her dam has been an outstanding cow for us with her impressive 351-day calving interval on her seven calves. 20K sells open.



ABF Ms Big Town 20K

Open Heifers



ABF Ms Black Granite 23K4

180 ABF MS BLACK GRANITE 23K4

Born: 9/5/22 R10514079 Gen: 2 PHN: 23K4 From Addison Brangus Farms

ABF BLACK GRANITE 23D5
R10333005

MC GRANITE 834B
SVF MS 535P9 23S104

MC BOULDER 889Z14
MC MS 778 TRAVELER 834Z
BUENO OF SALACOA 535P9
SVF MS 23P57
LEAD GUN OF BRINKS 222K14
MISS BRINKS UPPERCUT 30L18
MC NUFF SAID 889T50
SVF MS LEADGUN 23S85

ABF MS CSONKA 23G
R10410446

BRANGUS
GE-EPDs

CSONKA OF BRINKS 30R4
QCB MS NUFF SAID 23Z13

BW	WW	YW	REA	FT	IMF										
69 (94%)	676 (102%)	972 (100%)													
CED	BW	WW	YW	M	TM	CEM	SC	REA	IMF	FT	Hfr Prg	Stay	Cow Wt	TI	FI
5.3	0.2	26	55	8	21	3.49	0.68	0.35	0.06	0.017	6.69	1.57	-2.42	2.59	2.75
35%	40%	30%	20%	60%	40%	55%	30%	20%	45%	90%	15%	25%	45%	25%	30%

We have seen some top-notch Black Granite daughters in our past sales, but 23K4 may be my favorite thus far. She has 14 well-balanced EPDs in our breeds top 45% or better, including top 20% YW and REA, 30% WW and SC and 35% CED, BW and TM. Her new owner will have the opportunity to breed her to the bull of choice. She sells open.



ABF Ms Blackstone 23K5

181 ABF MS BLACKSTONE 23K5

Born: 9/27/22 R10514077 Gen: 4 PHN: 23K5 From Addison Brangus Farms

ABF BLACKSTONE 23G2
R10410461

BWCC MONUMENT 10D7
QCB MS NUFF SAID 23Z13

MC BOULDER 889Z14
BWCC MS RESOURCE 10A10
MC NUFF SAID 889T50
SVF MS LEADGUN 23S85
MC JOHN WAYNE 165N3
MC MS EXTRAVAGANT 889P4
CADENCE OF BRINKS
SVF MS 23M28

ABF MS NUFF SAID 23D11
R10333587

BRANGUS
GE-EPDs

MC NUFF SAID 889T50
SVF MS CADENCE 23S69

BW	WW	YW	REA	FT	IMF										
61 (83%)	591 (100%)	778 (100%)													
CED	BW	WW	YW	M	TM	CEM	SC	REA	IMF	FT	Hfr Prg	Stay	Cow Wt	TI	FI
8.1	-1.7	24	41	11	23	4.06	0.55	0.23	0.23	0.011	8.7	2.16	-8.61	2.55	3.79
10%	10%	40%	50%	30%	30%	35%	40%	35%	15%	80%	4%	10%	15%	25%	5%

This Blackstone daughter has an impressive 17 EPD traits in our breeds top 45% or better, including top 5% BW, 10% CED, 15% IMF and 25% Milk and TM. With her 8.3 CED, she can be mated to a wide variety of AI sires. She sells open.



DMR Domain 415G35 ~ Sire of Lots 106A, 182

182 GCB MS DOMAIN 2K9

Born: 9/6/22 R10520983 Gen: 6 PHN: 2K9 From Gold Creek Brangus

DMR DOMAIN 415G35
R10422132

DMR EMPIRE 795D12
MS DMR CORONADO 415A7

TJM THREE D 302A
MS DMR JETHRO 795Y2
TJM CORONADO 535X
MS BRINKS BRIGHT SIDE 415R23
CB HOMBRE 541T3
MS BRINKS LAMBERT 803T6
BURTIN'S TRANSFORMER 803G3
CB MS LUCKY 2L

CB MS PASSPORT 2B
R10275279

CB PASSPORT 803Y11
CB MS BT 2U

BW	WW	YW	REA	FT	IMF										
80 (100%)	565 (100%)	846 (100%)	10.14 (100%)	0.29 (100%)	3.97 (100%)										
CED	BW	WW	YW	M	TM	CEM	SC	REA	IMF	FT	Hfr Prg	Stay	Cow Wt	TI	FI
7.3	-0.6	17	31	6	14	4.02	0.51	-0.02	-0.02	0.007	3.52	0.82	-1.8	1.15	2.12
15%	20%	65%	75%	75%	80%	40%	45%	80%	70%	70%	40%	50%	50%	75%	55%

Like many, I was unfamiliar with the 2 cow family when Cavender brought it to Houston, but it's continued to impress and gain its spot in breed history. This female is out of the \$30,000 DMR Domain 415G35, owned by Las Palomas and Juarez Ranches. He's out of a daughter of the \$63,000 Ms Brinks Bright Side 415R23, who also has an embryo lot in this sale.

Open Heifers



184 LF MS SURRENDER 46K

Born: 5/24/22 R10514344 Gen: 5 PHN: 46K From Lykins Farm

QVF N SURRENDER 150G7
R10427025

NEVER SURRENDER OF SALACOA 803D9
DDD MS NANCY 150U8

MC BOULDER 889Z14
MS BRINKS LOMBARDI 803S25
SKYHAWKS PRESIDENTE
GTB MS NAOMI 150J

QVF MS NEVER SURRENDER 46G2
R10419192

NEVER SURRENDER OF SALACOA 803D9
CX MS BLACK DIAMOND 46/D

MC BOULDER 889Z14
MS BRINKS LOMBARDI 803S25
CX MR BLACK DIAMOND 36/U
CCR WYETTE LADY 46Z5

BW	WW	YW	REA	FT	IMF										
65 (95%)															
CED	BW	WW	YW	M	TM	CEM	SC	REA	IMF	FT	Hfr Prg	Stay	Cow Wt	TI	FI
3	2.2	28	56	6	20	4.23	0.6	0.42	-0.07	0.007	3.55	0.55	-0.93	2.14	1.73
65%	90%	25%	20%	75%	45%	30%	35%	15%	90%	70%	40%	60%	55%	35%	70%

Again, by our good Never Surrender son out of the Doguet Nancy cow that writes a genomic profile with an abundance of balance. Power plus carcass in this individual.



Never Surrender of Salacoa 803D9
Sire of Lots 177, 185, 203, 204, 213, 301

185 QVF MS NVR SURRENDER 46K

Born: 3/18/22 R10497291 Gen: 4 PHN: 46K From Lykins Farm

NEVER SURRENDER OF SALACOA 803D9
R10318183

MC BOULDER 889Z14
MS BRINKS LOMBARDI 803S25

MC SOMETHING SPECIAL 129W14
MC MS EXTRAVAGANT 889X4
LOMBARDI OF BRINKS 468N10
MISS BRINKS KO 803J

CX MS BLACK DIAMOND 46/D
R10327758

CX MR BLACK DIAMOND 36/U
CCR WYETTE LADY 46Z5

CX BLACK DIAMOND 485/P
KWM MS SONAR 36S3
CCR SLEEP EASY 419W5
CCR WYETTE LADY 46K

BW	WW	YW	REA	FT	IMF										
75 (111%)															
CED	BW	WW	YW	M	TM	CEM	SC	REA	IMF	FT	Hfr Prg	Stay	Cow Wt	TI	FI
0.2	3.2	35	66	9	27	4.02	0.48	0.45	-0.06	0.007	2.96	0.47	-2.56	2.56	1.81
90%	>95%	10%	10%	50%	15%	40%	50%	10%	85%	70%	50%	65%	45%	25%	70%

An own daughter of the breed changing, Never Surrender of Salacoa 803D9 with five EPD traits ranking in the breed's upper 25%, paced by 10% WW, YW, and REA.



Ms TTT Windfall 436K5

187 MS TTT WINDFALL 436K5

Born: 8/16/22 R10526596 Gen: 1 PHN: 436K5 From TTT Ranches, LLC

DMR WINDFALL 535H13
R10449409

JM THREE D 302A
MS DMR CORONADO 535A8

CB FINAL CUT 924X
OAKS MS PATTON 302X3
TJM CORONADO 535X
SVF MS 535M31

CNF MISS UB JAN 436C2
UB10316722

BRINKS ROBERTSON 406U5
CNF MISS UB JAN 436U3

ROBERTSON OF BRINKS 209S9
MS BRINKS BEST BET 406M4
PINE RIDGE KABOOM L025
CNF MISS JAN 436P

BW	WW	YW	REA	FT	IMF										
67 (100%)	580 (100%)														
CED	BW	WW	YW	M	TM	CEM	SC	REA	IMF	FT	Hfr Prg	Stay	Cow Wt	TI	FI
5.2	0	31	54	14	30	3.58	0.47	0.18	0.05	0.018	7.01	1.26	-0.26	2.51	2.28
35%	35%	20%	20%	15%	10%	55%	50%	45%	50%	90%	10%	35%	55%	25%	50%

Ms TTT Windfall 436K5 writes eight traits ranking in the breeds top 30% or greater led by top 15% in Milk and top 10% TM and Hef Preg. Her dam, 436C2, averaged \$7,500 on her first two bulls and earned her a spot in our donor pen. This calf should follow in her dam's steps and produce bulls that work. Balanced and maternal!!! She sells open and ready to breed.

Open Heifers

188 ABF MS EMPIRE 468K

Born: 9/18/22 UB10514076 Gen: 1 PHN: 468K

From Addison Brangus Farms

DMR EMPIRE 795D12
R10323531

TJM THREE D 302A
MS DMR JETHRO 795Y2

CB FINAL CUT 924X
OAKS MS PATTON 302X3
MC JETHRO 0053
MS BRINKS UPPERCUT 795R9
RITO 707 OF IDEAL 3407 7075
S A V BLACKCAP MAY 4136
CRC GUARDIAN 9U8U5
MS BRINKS NEW ERA 468P14

ABF MS RESOURCE 468G
UB10426578

S A V RESOURCE 1441
MS DMR GUARDIAN 468C7

BRANGUS
GE-EPDS

BW	WW	YW	REA	FT	IMF										
68 (100%)	674 (100%)	964 (100%)													
CED	BW	WW	YW	M	TM	CEM	SC	REA	IMF	FT	Hfr Prg	Stay	Cow Wt	TI	FI
5.8	0.1	39	61	3	23	3.68	0.92	0.52	0.13	0.018	10.07	2.96	8.49	3.1	3.67
30%	35%	10%	15%	95%	30%	50%	15%	5%	30%	90%	1%	2%	90%	15%	10%

This deep, thick-made donor prospect is sired by DMR Empire 795D12 and out of our 468G Resource donor. 468K has 14 EPD traits in the breeds top 35% or better including, top 5% WW and REA and 30% CED & IMF. She sells open.

189 ABF MS NEVER SURRENDER 468K3

Born: 8/17/22 UB10531830 Gen: 1 PHN: 468K3

From Addison Brangus Farms

NEVER SURRENDER OF SALACOA 803D9
R10318183

MC BOULDER 889Z14
MS BRINKS LOMBARDI 803S25

MC SOMETHING SPECIAL 129W14
MC MS EXTRAVAGANT 889X4
LOMBARDI OF BRINKS 468N10
MISS BRINKS KO 803J
RITO 707 OF IDEAL 3407 7075
S A V BLACKCAP MAY 4136
CRC GUARDIAN 9U8U5
MS BRINKS NEW ERA 468P14

ABF MS RESOURCE 468G
UB10426578

S A V RESOURCE 1441
MS DMR GUARDIAN 468C7

BRANGUS
GE-EPDS

BW	WW	YW	REA	FT	IMF										
78 (100%)	650 (100%)	998 (100%)													
CED	BW	WW	YW	M	TM	CEM	SC	REA	IMF	FT	Hfr Prg	Stay	Cow Wt	TI	FI
2.7	1.8	48	86	7	31	3.36	0.96	0.78	0.12	0.026	7.5	2.48	7.06	4.2	3.25
70%	85%	1%	1%	70%	10%	60%	10%	1%	30%	95%	10%	10%	90%	2%	15%

This deep, thick-made donor prospect is out of Never Surrender of Salacoa 803D9 and our 468G Resource donor. 468K3 has 11 EPD traits in our breeds top 15% or better, including three very important EPDs in the top 1% - WW, YW and REA. She sells open.



ABF Ms Empire 468K



ABF Ms Never Surrender 468K3

Open Heifers

129 VF MS HUGO 468K44

Born: 9/6/22 R10522017 Gen: 1 PHN: 468K44 From Vanna Farms

BWCC HUGO 484H7
R10472434

BWCC MCQUEEN 192E24
BWCC MS BOULDER 487B18

BWCC CROSS FIT 541B28
BWCC MS CHILL FACTOR 192A60
MC BOULDER 889Z14
BWCC MS STRYKER 487W4
S A V RESOURCE 1441
BWCC MS ELEGIDO 403Y
MC SOMETHING SPECIAL 129W14
MISS BRINKS CADENCE 468G15

BWCC MS OVERLOAD 468D22
UB10336046

BWCC OVERLOAD 403A
BWCC SHE'S SPECIAL 468Y18

BRANGUS
GE-EPDS

BW	WW	YW	REA	FT	IMF										
78 (100%)	584 (100%)														
CED	BW	WW	YW	M	TM	CEM	SC	REA	IMF	FT	Hfr Prg	Stay	Cow Wt	TI	FI
7.5	-1.5	32	63	15	31	4.16	0.74	0.52	0.35	0.041	6.67	2.5	3.62	3.95	3.33
15%	10%	15%	10%	10%	10%	35%	25%	5%	10%	>95%	15%	5%	80%	4%	15%

VF Ms Hugo 468K44 is sired by the Fenco herd sire, BWCC Hugo 484H7 and out of the \$75,000 BWCC Ms Overload 468D22, whose progeny has been averaging \$20,000 at auction. Her Genomic profile has no holes in it having 5% REA, 10% BW, YW, Milk, Total Maternal and IMF. While checking the boxes with 15% Breed Back and Heifer Preg with 5% Stay. These Hugo daughters are in high demand!



BWCC Ms Overload 468D22 ~ Dam of Lot 129

190 BHF MISS BIG TOWN 52K

Born: 11/1/22 R10533258 Gen: 4 PHN: 52K From Boot Hill Farms

BWCC BIG TOWN 192B16
R10266676

MC NUFF SAID 889T50
BWCC MS REVELATION 192W8

MC JOHN WAYNE 165N3
MC MS EXTRAVAGANT 889P4
MC REVELATION 129T
MISS 4C LEAD GUN 192P4
HOLLYWOOD OF SALACOA 23A53
MS BRINKS NEW ERA 468P22
SUHN'S CHISHOLM 331W45
MS CSR SINGLETARY 52W17

GHB MS TINSELTOWN 52F31
R10393317

TINSELTOWN OF SALACOA 468D4
MS C STAR CHISHOLM 52B26

BW	WW	YW	REA	FT	IMF										
76 (91%)															
CED	BW	WW	YW	M	TM	CEM	SC	REA	IMF	FT	Hfr Prg	Stay	Cow Wt	TI	FI
6	-0.4	30	54	8	23	2.19	0.7	0.5	0.19	0.009	11.21	1.53	-1.84	3.07	2.44
25%	25%	20%	20%	60%	30%	90%	30%	10%	20%	75%	1%	25%	50%	15%	40%

This Big Town heifer speaks for herself. She is a standout. Make sure to give her a look.

191 CONE CATTLE MS EPIC 535K

Born: 9/27/22 UB10509557 Gen: 1 PHN: 535K From Cone Cattle Co.

SUHN'S EPIC 331D16
UB10326791

S A V RESOURCE 1441
SUHN'S MISS LTD 331X18

RITO 707 OF IDEAL 3407 7075
S A V BLACKCAP MAY 4136
LTD OF BRINKS 415T28
SUHN'S MS AFFIRMED 331T15
TJM THREE D 302A
SCC MISS MYTTY 30Z5
BRINKS ARABELA 1038
MS BRINKS SUNDANCE 535S92

LM MS BEACON 535E4
R10371601

SUHN'S MAJESTIK BEACON 30C
MS BRINKS BELLA 535A8

BRANGUS
GE-EPDS

BW	WW	YW	REA	FT	IMF										
65 (100%)	680 (100%)														
CED	BW	WW	YW	M	TM	CEM	SC	REA	IMF	FT	Hfr Prg	Stay	Cow Wt	TI	FI
5.3	0.4	43	77	7	29	1.5	0.9	0.6	0.32	0.01	7.06	1.86	-2.41	4.38	3.24
35%	45%	3%	2%	70%	10%	95%	15%	3%	10%	75%	10%	15%	45%	2%	15%

She's a Bella granddaughter out of the Westall program and doesn't she have the look! Extremely functional with genomics ranking her with 11 traits and indicators in the upper 25% of the population. Growth, carcass, and fertility.

192 3S MISS NUFF SAID 535K2

Born: 11/22/22 R10529162 Gen: 3 PHN: 535K2 From 3 South Farms

MC NUFF SAID 889T50
R10096341

MC JOHN WAYNE 165N3
MC MS EXTRAVAGANT 889P4

TJM JOHN WAYNE 44L
MC MS NEWS MAN 165K
NICHOLS EXTRA H6
MC MS MADISON 889J6
SUHN'S MAJESTIK BEACON 30C
ELC MS HOMBRE 96A4
CB PASSPORT 803Y11
CLVR MISS COCO 535W2

ELC MS BEACON 535H10
R10465495

ELC MR BEACON 96F5
ELC MS PASSPORT 535D24

BRANGUS
GE-EPDS

BW	WW	YW	REA	FT	IMF										
68 (98%)	525 (109%)														
CED	BW	WW	YW	M	TM	CEM	SC	REA	IMF	FT	Hfr Prg	Stay	Cow Wt	TI	FI
5.8	0.7	28	51	8	22	4.07	0.38	0.14	0.06	0.004	9.3	1.61	-4.72	2.3	2.87
30%	55%	25%	25%	60%	35%	35%	60%	50%	45%	60%	2%	25%	30%	30%	25%

Sired by MC Nuff Said 889T50 and out of the 535 deal with genomics placing her in the breed's top 35% or greater on 10 traits and indexes.

193 G&R MS FINAL E 535K2

Born: 11/7/22 R10531822 Gen: 5 PHN: 535K2 From G & R Brangus

COLLINS FINAL E 468C2
R10279787

CB FINAL CUT 924X
OAKS MS CSONKA 468X10

MC REVELATION 129T
RBM MS GUNS 924T3
CSONKA OF BRINKS 30R4
MS BRINKS SONAR 468P58
MC ELEGIDO 924W6
BWCC MS LEAD GUN 889W26
ANGELO OF BRINKS 489K4
MS BRTY 535J1

BWCC MS CRUISE 535B3
R10293485

BWCC CRUISE 889Z28
SF MISS ANGELO 535N4

BW	WW	YW	REA	FT	IMF										
73 (100%)	482 (100%)														
CED	BW	WW	YW	M	TM	CEM	SC	REA	IMF	FT	Hfr Prg	Stay	Cow Wt	TI	FI
2.2	1.1	36	62	10	28	3.28	0.27	0.23	-0.04	-0.001	4	1.34	7.07	2.55	2.59
75%	65%	10%	10%	40%	15%	65%	75%	35%	80%	40%	35%	30%	90%	25%	35%

By Final E out of a Cruise daughter. EPD traits in top 10% WW and YW. She is open ready to breed this fall to the bull of your choice.

Open Heifers



BWCC Chiseled 468G58 ~ Sire of Lots 101A, 104A, 194, 195, 199

194 HH MS CHISELED 541K31

Born: 11/14/22 R10537882 Gen: 2 PHN: 541K31 From Hartness Brangus

BWCC CHISELED 468G58
R10434380

BWCC CROSS FIT 541B28
BWCC MS STATEMENT 468B32

MC CROSSOVER 834Y
MC MS LUCIA 541U
BWCC STATEMENT 036Z
BWCC MS ROCK STAR 468Y14
BWCC CRUISE 889Z28
BWCC MS ROCK SOLID 323B
MC SOMETHING SPECIAL 129W14
MS BRINKS ANGELO 541P38

HH MS CRUISE 541H3
R10461111

BWCC CRUISE 323D3
VF MS SOMETHING SPECIAL 541Z

BW	WW	YW	REA	FT	IMF										
78 (98%)															
CED	BW	WW	YW	M	TM	CEM	SC	REA	IMF	FT	Hfr Prg	Stay	Cow Wt	TI	FI
2.6	1.6	36	64	5	23	4.1	0.92	0.39	0.22	0.012	4.67	2.11	5.28		
70%	80%	10%	10%	85%	30%	35%	15%	15%	20%	80%	30%	10%	85%		

Here's a BWCC Chisled 468G58 from the Hartness program out of the 541 tribe with 11 EPDs and indexes in the upper 30%. Top 10% WW, YW, Stay, 15% SC, REA, and 20% IMF.

195 HH MS CHISELED 541K25

Born: 9/25/22 R10537875 Gen: 6 PHN: 541K25 From Hartness Brangus

BWCC CHISELED 468G58
R10434380

BWCC CROSS FIT 541B28
BWCC MS STATEMENT 468B32

MC CROSSOVER 834Y
MC MS LUCIA 541U
BWCC STATEMENT 036Z
BWCC MS ROCK STAR 468Y14
GR SWIFT 209W3
OAKS MS HOMBRE 99X9
ATLANTA OF SALACOA 488Z
OAKS MS CSONKA 541T7

B2K MS HIGH CHOICE 541H60
R10477848

OAKS HIGH CHOICE 99A1
OAKS MS ATLANTA 541C54

BW	WW	YW	REA	FT	IMF										
82 (103%)															
CED	BW	WW	YW	M	TM	CEM	SC	REA	IMF	FT	Hfr Prg	Stay	Cow Wt	TI	FI
2.5	1.6	41	71	5	25	2.4	1.11	0.5	0.23	0.007	3.16	1.14	-2.37		
70%	80%	4%	4%	85%	25%	85%	5%	10%	15%	70%	45%	40%	45%		

Here's another Chisled from Hartness Brangus. This one's out of a High Choice with six EPDs in the upper 25% paced by 4% WW and YW, 5% SC, 10% REA and 15% IMF.

196 WF MS CB CAPITAL GAIN 415K

Born: 9/15/22 R10521205 Gen: 6 PHN: 415K From Windlass Farm

CB CAPITAL GAIN 924D19
R10339273

TJM THREE D 302A
CB MS HOMBRE 924Z11

CB FINAL CUT 924X
OAKS MS PATTON 302X3
CB HOMBRE 541T3
RBM MS GUNS 924T3
TJM CORONADO 535X
MS CRC CSONKA 263U
BLANDA OF BRINKS 535R54
MS BRINKS BRIGHT SIDE 415R23

MS WF STRATEGY
R10452631

DMR STRATEGY 263C6
CB MS BLANDA 415W

BW	WW	YW	REA	FT	IMF										
71 (96%)	528 (100%)														
CED	BW	WW	YW	M	TM	CEM	SC	REA	IMF	FT	Hfr Prg	Stay	Cow Wt	TI	FI
4.2	0.6	32	56	7	24	1.12	0.26	0.16	0.01	0.003	7.07	1.47	-1.58	2.42	2.71
50%	50%	15%	20%	70%	25%	>95%	75%	50%	60%	55%	10%	25%	50%	30%	30%

Open, docile, yearling heifer with a moderate frame ready to breed this fall. She will do well bred to any of today's low BW power bulls. Her dam was an ET calf born at our farm and has taken to AI every breeding thus far.

197 LF MS SURRENDER 820K

Born: 5/31/22 R10514346 Gen: 5 PHN: 820K From Lykins Farm

QVF N SURRENDER 150G7
R10427025

NEVER SURRENDER OF SALACOA 803D9
DDD MS NANCY 150U8

MC BOULDER 889Z14
MS BRINKS LOMBARDI 803S25
SKYHAWKS PRESIDENTE
GTB MS NAOMI 150J
SINGLETARY OF BRINKS 675R
MISS BRINKS GERONIMO 535K14
SVF MR LEADGUN 23590
SVF MS 820P9

MS SALACOA CHEROKEE 820A5
R10238838

WW CHEROKEE 535W36
SVF 23590 820 W277

BW	WW	YW	REA	FT	IMF										
65 (95%)															
CED	BW	WW	YW	M	TM	CEM	SC	REA	IMF	FT	Hfr Prg	Stay	Cow Wt	TI	FI
3.4	0.7	23	47	8	20	4.47	0.55	0.27	0.04	0.001	5.01	0.75	-0.71	2.16	2.05
60%	55%	40%	35%	60%	45%	25%	40%	30%	50%	50%	25%	50%	55%	35%	60%

Study your lesson here. This female has a pedigree of history in the Brangus breed. Being an own daughter of Never Surrender out of the famous 150 Nancy cow, the bottom side is laced with the La Terre 820Z15. You don't have an opportunity to own these kind of genetics often. Take advantage.

198 GBF MS PERFECT FIT 889K10

Born: 9/2/22 R10534939 Gen: 1 PHN: 889K10 From Galloway Brangus Farms

PERFECT FIT OF SALACOA 468G57
R10437568

BWCC CROSS FIT 541B28
MS BRINKS NEW ERA 468P22

MC CROSSOVER 834Y
MC MS LUCIA 541U
NEW ERA OF BRINKS 541J37
MISS BRINKS CADENCE 468G15
S A V RESOURCE 1441
BWCC MS ELEGIDO 403Y
MC SOMETHING SPECIAL 129W14
BWC MS TANK 889T4

VF MS OVERLOAD 889E9
UB10349205

BWCC OVERLOAD 403A
VF MS SPECIAL 889Y

BW	WW	YW	REA	FT	IMF										
89 (100%)	583 (100%)														
CED	BW	WW	YW	M	TM	CEM	SC	REA	IMF	FT	Hfr Prg	Stay	Cow Wt	TI	FI
1.2	0.8	39	66	8	28	3.39	1.57	0.49	0.12	0.014	5.69	2.4	6.88	3.3	3.73
85%	60%	10%	10%	60%	15%	60%	1%	10%	30%	85%	20%	10%	90%	10%	5%

This Perfect Fit daughter has seven EPD traits at 10% or better led by top 1% SC, 10% WW, YW, REA, STAY, BB and NC. She is open and ready to breed to the sire of your choice.

Open Heifers

199 HH MS CHISELED 889K26

Born: 12/5/22 R10537881 Gen: 4 PHN: 889K26 From Hartness Brangus

BWCC CHISELED 468G58
R10434380

BWCC CROSS FIT 541B28
BWCC MS STATEMENT 468B32

MC CROSSOVER 834Y
MC MS LUCIA 541U
BWCC STATEMENT 036Z
BWCC MS ROCK STAR 468Y14
MC REVELATION 129T
RBM MS JETHRO 924U2
MC JOHN WAYNE 165N3
MC MS EXTRAVAGANT 889P4

VF MS RIGHTEOUS 889B22
R10288803

MC RIGHTEOUS 924X2
BWCC MS TANK 889T4

BW	WW	YW	REA	FT	IMF										
78 (98%)															
CED	BW	WW	YW	M	TM	CEM	SC	REA	IMF	FT	Hfr Prg	Stay	CowWt	TI	FI
2	1.8	38	60	1	20	3	0.82	0.33	0.2	0.001	7.41	2.14	7.79		
75%	85%	10%	15%	>95%	45%	70%	20%	20%	20%	50%	10%	10%	90%		

Check out this pedigree, loaded with great donor cows, 541U, 468Y14, 924U2, 889P4, and 889T4. Breed good cows to good cows, you get good cows. Nine EPDs and indexes in the upper 20% of the Brangus non-parent population.



200 2 KEYS CROSS TOWN GIRL 468K3

Born: 9/11/22 R10531418 Gen: 4 PHN: 468K3 From 2 Keys Ranch

BWCC BIG TOWN 192B16
R10266676

MC NUFF SAID 889T50
BWCC MS REVELATION 192W8

MC JOHN WAYNE 165N3
MC MS EXTRAVAGANT 889P4
MC REVELATION 129T
MISS 4C LEAD GUN 192P4
MC CROSSOVER 834Y
MC MS LUCIA 541U
DMR ELDORADO 30815
MS DMR PATTON 468X6

GCB MS CROSS FIT 468H3
R10461275

BWCC CROSS FIT 541B28
MS DMR EL DORADO 468E17

BRANGUS
GE-EPDS

BW	WW	YW	REA	FT	IMF										
74 (107%) 556 (105%)															
CED	BW	WW	YW	M	TM	CEM	SC	REA	IMF	FT	Hfr Prg	Stay	CowWt	TI	FI
6.9	-0.1	31	50	3	18	2.35	0.92	0.36	0.22	0.006	10.75	1.5	0.42	2.81	2.33
20%	30%	20%	30%	95%	60%	85%	15%	20%	20%	65%	1%	25%	60%	20%	45%

Open heifer by BWCC Big Town 192B16. Her dam's sire BWCC Cross Fit! On the dam's side are also the great Ms DMR Patton 468X6 and Suhn's Miss Patton 30X6. GE EPDs are in 1% Heif Preg; 15% SC; 20% CED, WW, REA, IMF, Term Index; 25% STAY and 30% BW and YW. She has the look and the numbers to go in any direction and a nice disposition to go with it. A complete package. Check her out, she won't disappoint.



2 Keys Cross Town Girl 468K3

201 24K- HH MS CASHFLOW 24K

Born: 10/14/22 UB10536361 Gen: 1 PHN: 24K From Double H Farms

DMR CASH FLOW 535F30
UB10386538

S A V RESOURCE 1441
MS DMR CORONADO 535A8

RITO 707 OF IDEAL 3407 7075
S A V BLACKCAP MAY 4136
TJM CORONADO 535X
SVF MS 535M31
HANNIBAL OF BRINKS 784T6
TCB KIOWA PRINCESS U435
QCB/WAT ESTANCIA 263X4
BWCC MS JETHRO 24X3

JF MS. 24F
R10421715

SALACOA HANNIBAL 332B25
QCB MS 24A19-ET

BW	WW	YW	REA	FT	IMF										
73 (108%) 629 (114%)															
CED	BW	WW	YW	M	TM	CEM	SC	REA	IMF	FT	Hfr Prg	Stay	CowWt	TI	FI
4	0.6	43	74	13	35	0.89	0.46	0.5	0.16	0.017	6.06	1.6	-4.39	3.83	2.99
50%	50%	3%	3%	20%	2%	>95%	50%	10%	25%	90%	15%	25%	35%	4%	20%

She's a DMR Cash Flow 535F30 out of a Hannibal from the 332 tribe and as expected, genotypically superior with 14 traits and indexes in the upper 35% of the population, led by 2% TM, 3% WW and YW, 10% REA, 15% HP, 20% Milk and Fert. This lady has brood cow all over her.



24K-HH Ms Cashflow 24K

Open Heifers

202 610K- HH EMPIRE 610K

Born: 10/25/22 UB10536362 Gen:1 PHN: 610K

From Double H Farms

JRT EMPIRE 624H
R10441687

DMR EMPIRE 795D12
QCB MS 624A-ET

JF MS. VISTA 610F2
UB10421740

JINDRA DOUBLE VISION
JF SOMETHING SPECIAL 610Z

TJM THREE D 302A
MS DMR JETHRO 795Y2
QCB/WAT ESTANCIA 263X4
BWCC MS REAL DEAL 624W
CONNEALY REFLECTION
HOFF RACHEL 8312 405
MC SOMETHING SPECIAL 129W14
AV BRIGHTSIDE SADIE 610S

BW	WW	YW	REA	FT	IMF										
57 (84%)	480 (87%)														
CED	BW	WW	YW	M	TM	CEM	SC	REA	IMF	FT	Hfr Prg	Stay	Cow Wt	TI	FI
9.5	-1.4	19	35	8	18		0.37	0.34	0.04	0.01	5.28	1.29	0.67	1.83	2.42
4%	10%	55%	65%	60%	60%		60%	20%	50%	75%	20%	35%	65%	50%	45%

Calving ease and balance with top 4% CED, 10% BW 20% REA and Heifer Preg. She pairs well with the power bulls of today.

217 3S MISS ABSTRACT 85L

Born: 1/10/23 UB10529158 Gen:2 PHN: 85L

From 3 South Farms

SUHN'S ABSTRACT 30H166
UB10467509

VOREL ABSTRACT 25E9
SUHN'S MISS PAYWEIGHT 30E51

KING'S MISS SILVERADO 85F5
UB10404045

BWCC SILVERADO 889D
QCB MS DONNA 85Z

MAR INNOVATION 251
VOREL MS 30T 25Z
BASIN PAYWEIGHT 1682
SUHN'S MISS LANDAU 30Z13
S A V REAL MASSIVE 4879
BWCC MS CROSSOVER 889B12
QCB 280X
CB MS 85X

BW	WW	YW	REA	FT	IMF										
77 (114%)	627 (100%)														
CED	BW	WW	YW	M	TM	CEM	SC	REA	IMF	FT	Hfr Prg	Stay	Cow Wt	TI	FI
1	1.7	41	75	10	31	2.66	1.08	0.39	0.23	0.018	5.43	1.36	5.05	3.85	2.34
85%	80%	4%	3%	40%	10%	80%	10%	15%	15%	90%	20%	30%	85%	4%	45%

Interesting pedigree for the Ultrablack grade-up program infusing MAR Innovation and Basin Payweight into the top side of this pedigree with Abstract breeding. This female posts 11 traits in the breed's upper 35%. Notably 4% WW and Term, 3% YW, 10% TM, SC, 15% REA and IMF.

Selling Choice of Open Heifers from TTT Ranches

Ms TTT Never Surrender 468K (Lot 203) and Ms TTT Never Surrender 468K2 (Lot 204) are what cow people need to propel their program forward. With 12 traits in the top 20% or greater, moderate BW, excellent growth and superb maternal characteristics, 468K and 468K2 will catch everyone's eyes for sure. We purchased these embryos from Wayne a couple of years past and knew they would be good. The genetics are there, don't miss this opportunity for the pick of these two! They sell open and ready to breed.



Ms TTT Never Surrender 468K

203 MS TTT NEVER SURRENDER 468K

Born: 9/14/22 R10526588 Gen:4 PHN: 468K

From TTT Ranches, LLC

NEVER SURRENDER OF SALACOA 803D9
R10318183

MC BOULDER 889Z14
MS BRINKS LOMBARDI 803S25

MS DMR GUARDIAN 468C7
R10296914

CRC GUARDIAN 9U8U5
MS BRINKS NEW ERA 468P14

MC SOMETHING SPECIAL 129W14
MC MS EXTRAVAGANT 889X4
LOMBARDI OF BRINKS 468N10
MISS BRINKS KO 803J
CSONKA OF BRINKS 30R4
MISS 4L BEST BET 9U8P5
NEW ERA OF BRINKS 541J37
MISS BRINKS CADENCE 468G15

BW	WW	YW	REA	FT	IMF										
87 (100%)	564 (100%)														
CED	BW	WW	YW	M	TM	CEM	SC	REA	IMF	FT	Hfr Prg	Stay	Cow Wt	TI	FI
3.1	1.6	40	73	9	29	5.49	0.83	0.63	-0.03	0.007	8.52	2.46	10.2	3.26	3.43
65%	80%	5%	3%	50%	10%	10%	20%	2%	75%	70%	4%	10%	95%	10%	10%



Ms TTT Never Surrender 468K2

204 MS TTT NEVER SURRENDER 468K2

Born: 9/20/22 R10526585 Gen:4 PHN: 468K2

From TTT Ranches, LLC

NEVER SURRENDER OF SALACOA 803D9
R10318183

MC BOULDER 889Z14
MS BRINKS LOMBARDI 803S25

MS DMR GUARDIAN 468C7
R10296914

CRC GUARDIAN 9U8U5
MS BRINKS NEW ERA 468P14

MC SOMETHING SPECIAL 129W14
MC MS EXTRAVAGANT 889X4
LOMBARDI OF BRINKS 468N10
MISS BRINKS KO 803J
CSONKA OF BRINKS 30R4
MISS 4L BEST BET 9U8P5
NEW ERA OF BRINKS 541J37
MISS BRINKS CADENCE 468G15

BW	WW	YW	REA	FT	IMF										
88 (100%)	576 (100%)														
CED	BW	WW	YW	M	TM	CEM	SC	REA	IMF	FT	Hfr Prg	Stay	Cow Wt	TI	FI
3	1.6	40	73	9	29	5.49	0.83	0.63	-0.03	0.007	8.52	2.46	10.2	3.26	3.43
65%	80%	5%	3%	50%	10%	10%	20%	2%	75%	70%	4%	10%	95%	10%	10%

Pick Flush Lot from Sunshine Acres & 3G Cattle

Pick Flush on 30D3 or 30E48 guaranteeing six (6) IVF embryos.
 Cows will be worked at Bickett Genetics and embryos produced by TransOva.
 Buyer is to pay all fees including semen on the bull of their choice.
Consigned by Sunshine Acres and 3G Cattle

Suhn's Miss Foundation 30D23

- ◆ \$41,000 Lot 1 cow at 2020 Sale at Chimney Rock
- ◆ Royal Pedigree (Foundation x 30Z3)
- ◆ Phenotypic standout- Deep, soggy and feminine with outstanding feet, udder and disposition
- ◆ Productive donor with 19 registered calves and many more on the way
- ◆ Dam of \$18,000 30H51
- ◆ Multiple sons (by different sires) selling this Fall

Suhn's Miss Foundation 30E48

- ◆ \$50,000 Lot 1 cow at 2022 Sale at Chimney Rock
- ◆ Royal Pedigree (Foundation x 30Z5)
- ◆ Maternal sister to Signal, Beacon, Priority One, Senator, and multiple donors
- ◆ Powerful EPDs and phenotype
- ◆ Dam of \$20,000 Ultimate and \$14,000 30J55
- ◆ 11 registered calves with more on the way
- ◆ Limitless mating opportunities. These UB2's are full sisters in blood with no Csonka or Three D in their pedigrees

205 SUHN'S MISS FOUNDATION 30D3

Born: 2/6/16 UB10325076 Gen: 3 PHN: 30D3 From 3G Cattle

SUHN'S FOUNDATION 331Z28
R10227112

GR SWIFT 209W3
SUHN'S MISS BT 331S43

LAMBERT OF BRINKS 317R3
MS BRINKS BRIGHT SIDE 209L11
BURTIN'S TRANSFORMER 803G3
SUHN'S MS CADENCE 331M3

SCC MS MYTTY 30Z3
UB10228010

MYTTY IN FOCUS
SUHN'S MS DUKE 30M

S A F FOCUS OF E R
MYTTY COUNTNESS 906
WR DUKE 228/F
SUHN'S MS GERONIMO 30J5

BRANGUS
GE-EPDS

205 SUHN'S MISS FOUNDATION 30E48

Born: 8/28/17 UB10367606 Gen: 3 PHN: 30E48 From Sunshine Acres Brangus, LLC

SUHN'S FOUNDATION 331Z28
R10227112

GR SWIFT 209W3
SUHN'S MISS BT 331S43

LAMBERT OF BRINKS 317R3
MS BRINKS BRIGHT SIDE 209L11
BURTIN'S TRANSFORMER 803G3
SUHN'S MS CADENCE 331M3

SCC MISS MYTTY 30Z5
UB10228005

MYTTY IN FOCUS
SUHN'S MS DUKE 30M

S A F FOCUS OF E R
MYTTY COUNTNESS 906
WR DUKE 228/F
SUHN'S MS GERONIMO 30J5

BRANGUS
GE-EPDS

BW	WW	YW	REA	FT	IMF										
84 (106%)	692 (102%)	925 (105%)	11.03 (104%)	0.45 (127%)	5.74 (111%)										
CED	BW	WW	YW	M	TM	CEM	SC	REA	IMF	FT	Hfr Prq	Stay	Cow Wt	TI	FI
3.4	0.9	36	71	5	23	5.06	0.98	0.45	0.15	0.032	8.54	1.88	7.95	3.47	2.17
60%	60%	10%	4%	85%	30%	15%	10%	10%	25%	>95%	4%	15%	90%	10%	55%

BW	WW	YW	REA	FT	IMF										
80 (100%)	651 (100%)	896 (100%)	9.92 (100%)	0.32 (100%)	4.18 (100%)										
CED	BW	WW	YW	M	TM	CEM	SC	REA	IMF	FT	Hfr Prq	Stay	Cow Wt	TI	FI
4.9	0.1	37	67	9	28	4.26	1.06	0.48	-0.09	0.023	7.49	1.51	11.26	2.82	1.91
40%	35%	10%	10%	50%	15%	30%	10%	10%	90%	95%	10%	25%	95%	20%	65%



Embryo Packages from Vanna Farms

207 QVF PR EMPOWER 30G16 x VF MS CHILL FACTOR 000D3

QVF PR EMPOWER 30G16
R10412716

NEVER SURRENDER OF SALACOA 803D9

T3 MS THREE D 30D

VF MS CHILL FACTOR 000D3
UB10322496

S A V CHILL FACTOR 1418

VF MS GAME CHANGER 000B4

CED	BW	WW	YW	M	TM	CEM	SC	REA	IMF	FT	Hfr Prg	Stay	CowWt	TI	FI
1.7	3.6	58	99	2	31	3.16	0.88	0.74	0.11	0.025	7.24	1.26	2.51	4.53	1.79
85%	>95%	1%	1%	95%	10%	65%	20%	2%	40%	95%	10%	40%	70%	4%	70%

CED	BW	WW	YW	M	TM	CEM	SC	REA	IMF	FT	Hfr Prg	Stay	CowWt	TI	FI
4.6	0.4	36	61	4	22	3.81	1.2	0.23	0.35	0.017	6.84	2.46	4.18	3.46	3.61
45%	45%	10%	15%	90%	35%	45%	3%	35%	10%	90%	10%	10%	80%	10%	10%



QVF PR Empower 30G16



VF Ms Chill Factor 000D3

Don't miss the opportunity to garnish in the fresh genetics here with this \$75,000 **QVF PR Empower 30G16** x **VF Ms Chill Factor 000D3** who is the own daughter of MC Ms Quite Lady 000S50 that has propelled the Vanna program. **000D3** has an impressive 11 traits in the breed's upper 35% paced by 10% WW, IMF, HP, Stay, Term, Fert, BB, and NC. Paired with the powerful Empower who posts top 1% WW and YW, 2% REA, 10% TM and Heifer Preg. This is a can't miss mating.

Consigned by Vanna Farms

Selling 5 grade 1 embryos times the money.

208 DMR EMPIRE 795D12 x VF MS INTERNATIONAL 889C2

DMR EMPIRE 795D12
R10323531

TJM THREE D 302A

MS DMR JETHRO 795Y2

VF MS INTERNATIONAL 889C2
UB10297302

S A V INTERNATIONAL 2020

BWC MS TANK 889T4

CED	BW	WW	YW	M	TM	CEM	SC	REA	IMF	FT	Hfr Prg	Stay	CowWt	TI	FI
7.7	0.2	40	52	-1	18	4.44	0.69	0.35	-0.15	0.006	12.96	2.64	8.59	1.88	3.09
15%	45%	10%	35%	>95%	60%	20%	35%	30%	>95%	60%	1%	10%	90%	55%	20%

CED	BW	WW	YW	M	TM	CEM	SC	REA	IMF	FT	Hfr Prg	Stay	CowWt	TI	FI
1.9	0.6	36	65	5	24	1.8	0.41	0.36	0.3	0.005	11.39	1.98	-0.16	3.63	2.92
75%	50%	10%	10%	85%	25%	95%	60%	20%	10%	65%	1%	15%	60%	10%	25%



DMR Empire 795D12



BWC Ms Tank 889T4

Here is the chance to own genetics out of one of the top-producing donors in the Vanna Farms program, **VF Ms International 889C2**. Her dam BWCC Tank 889T4 is a full sister to BWCC Nuff Said 889T50. A fresh UB1 donor, **VF Ms International 889C2**, sired by the SAV International 20/20 bull from the Schaff program. She boasts a genomic profile with top 10% WW, YW and IMF and top 1% Heifer Preg. Mated with **DMR Empire 795D12** who has stamped the breed with over 1200 offspring.

Consigned by Vanna Farms

Selling 5 grade 1 embryos times the money.

Embryo Packages from Cross N Farm

209 CB COUNTY LINE 468H7 X MS DMR NUFF SAID 468B6

CB COUNTY LINE 468H7
UB10445096

GACC LAND LINE 102F1
CB MS TRADITION 468F21

MS DMR NUFF SAID 468B6
R10278664

MC NUFF SAID 889T50
SUHN'S MS DUKE 30M

CED	BW	WW	YW	M	TM	CEM	SC	REA	IMF	FT	Hfr Prg	Stay	Cow Wt	TI	FI
5.9	-1	44	72	12	34	1.96	1.05	0.53	0.19	0.023	11.47	2.4	1.46	3.95	3.27
35%	20%	5%	10%	20%	3%	90%	15%	10%	25%	90%	1%	10%	65%	10%	15%

CED	BW	WW	YW	M	TM	CEM	SC	REA	IMF	FT	Hfr Prg	Stay	Cow Wt	TI	FI
5.8	1	37	60	15	33	2.85	-0.25	0.44	-0.12	-0.004	8.97	2.13	-4.72	2.51	3.82
30%	65%	10%	15%	10%	4%	75%	>95%	10%	95%	30%	3%	10%	30%	25%	5%



CB County Line 468H7

A chance to own embryos out of the revenue-generating **Ms DMR Nuff Said 468B6**. She has produced females averaging over \$10,000. **468B6** sold at Wiley's Southern Harvest Sale to Fenco Farms for \$20,000 where she now resides. **468B6** comes from a long line of influential donors... 468X6, 468T64, 468L. **CB County Line 468H7** which is owned by Cavender Ranch and Schmidt Farms. Time-tested and proven genetics are offered here from Cross N.

Consigned by Cross N Farm

Selling 2 grade 1 embryos times the money.



Ms DMR Nuff Said 468B6

210 SUHN'S CN TRINITY 919E2 X MS BRINKS BRIGHT SIDE 415R23

SUHN'S CN TRINITY 919E2
R10349620

TJM THREE D 302A
SUHN'S MISS NORTH STAR 919A3

MS BRINKS BRIGHT SIDE 415R23
R10003944

BRINKS BRIGHT SIDE 607L11
MISS BRINKS VAQUERO 415G

CED	BW	WW	YW	M	TM	CEM	SC	REA	IMF	FT	Hfr Prg	Stay	Cow Wt	TI	FI
7.2	-1.2	27	55	3	17	4.09	0.59	0.28	0.12	0.021	8.23	1.24	8.24	2.74	1.46
15%	45%	10%	35%	>95%	60%	20%	35%	30%	>95%	60%	1%	10%	90%	55%	20%

CED	BW	WW	YW	M	TM	CEM	SC	REA	IMF	FT	Hfr Prg	Stay	Cow Wt	TI	FI
1.9	0.6	36	65	5	24	1.8	0.41	0.36	0.3	0.005	11.39	1.98	-0.16	3.63	2.92
20%	15%	40%	30%	90%	65%	30%	45%	40%	35%	90%	5%	40%	90%	30%	85%



Suhn's CN Trinity 919E2

Jeremy Price

A rare opportunity to own genetics directly from the \$73,000 **Ms Brinks Bright Side 415R23** who will go down in history as one of the most influential donors in the Brangus breed. As of today, **415R23** has over 250 calves in the Brangus Registry. Cross N partnered with Bushley Creek for \$70,000 to own this renowned donor. The **Trinity** bull propelled the Cross N program and this exciting mating will move the buyer to the next level. The last three **Trinity** females to sell averaged \$11,800. A **Trinity** daughter was the high-selling female at the TBBA Sale for \$19,500. Clover bought a flush mate bull to these embryos for \$9,500 at Cavender's.

Consigned by Cross N Farm

Selling 2 grade 1 embryos times the money.



Ms Brinks Bright Side 415R23

Trinity

Embryo Package from Boot Hill Farm

211 BWCC BIG LAKE 111F4 X VF MS MONUMENT 924G12

BWCC BIG LAKE 111F4
UB10399796

BWCC CROSS FIT 541B28
BWCC MS ROCK SOLID 111C6

VF MS MONUMENT 924G12
R10416211

BWCC MONUMENT 10D7
MS B2K-TBF JETHRO 924Z12

CED	BW	WW	YW	M	TM	CEM	SC	REA	IMF	FT	Hfr Prg	Stay	CowWt	TI	FI
3.4	1.7	64	90	0	32	4.63	1.94	0.63	0.8	0.024	5.3	1.44	3.42	5.95	2.34
65%	85%	1%	1%	>95%	5%	20%	1%	5%	1%	90%	25%	35%	75%	1%	50%

CED	BW	WW	YW	M	TM	CEM	SC	REA	IMF	FT	Hfr Prg	Stay	CowWt	TI	FI
4.2	0.3	30	52	5	20	1.62	0.95	0.42	0.19	0.056	4.44	2.46	4.56	2.64	2.94
50%	45%	20%	25%	85%	45%	95%	10%	15%	20%	>95%	30%	10%	80%	25%	25%



BWCC Big Lake 111F4

Big Time opportunity. Full sibs have been purchased by Draggin' M and ACE. Full sibs to **924G12** reside at Fenco and Herndon Farms. Two full sibs to these embryos have averaged \$17,000. Frozen genetics from **924G12** sold for \$1000 per embryo at this sale last year. A full sib was the Vanna Farms Donation heifer, 924K10, at the SBBA sale this year.

Consigned by
Boot Hill Farm
Selling 5 grade 1 embryos
times the money.



924K10



VF Ms Monument 924G12

Embryo Package from Double J Farms

212 BWCC BLACK TOP 192G22 X VF MS BOULDER 000F16

BWCC BLACK TOP 192G22
R10444674

BWCC MILE MARKER 889E32
BWCC MS CRUISE 192B62

VF MS BOULDER 000F16
UB10378711

MC BOULDER 889Z14
VF MS INTERNATIONAL 000D16

CED	BW	WW	YW	M	TM	CEM	SC	REA	IMF	FT	Hfr Prg	Stay	CowWt	TI	FI
5.4	0.7	22	44	5	16	1.85	0.02	0.52	0.37	0.039	1.42	1.47	1.49	2.81	2.2
40%	60%	55%	50%	80%	75%	95%	95%	10%	10%	>95%	75%	30%	6%	25%	55%

CED	BW	WW	YW	M	TM	CEM	SC	REA	IMF	FT	Hfr Prg	Stay	CowWt	TI	FI
2.7	0.9	39	68	9	28	2.76	0.58	0.67	0.03	0.02	9.19	2.64	-3.36	3.25	3.89
70%	60%	10%	10%	50%	15%	80%	40%	2%	55%	90%	3%	4%	40%	10%	4%



BWCC Black Top 192G22

Sired by **BWCC Black Top 192G22** out of **VF Ms Boulder 000F16**, the Boulder daughter out of the SAV International 2020 back to MC Ms Quiet Lady 000S50 who has done it all at Vanna Farms.

Consigned by Double J Farms
Selling 10 embryos in 2 lots of 5.



MC Ms Quiet Lady 000S50

Embryo Package from Cold Creek Ranch

213 NEVER SURRENDER OF SALACOA 803D9 x LINZ LADY 337-8269

NEVER SURRENDER OF SALACOA 803D9
R10318183

MC BOULDER 889Z14
MS BRINKS LOMBARDI 803S25

LINZ LADY 337-8269
EA19144715

K C F BENNETT CITATION
GAFFNEY LADY 337

CED	BW	WW	YW	M	TM	CEM	SC	REA	IMF	FT	Hfr Prg	Stay	CowWt	TI	FI
1.8	3.7	56	103	5	34	3.8	0.77	0.85	-0.16	0.023	7.92	1.7	5.74	4.09	2.26
65%	85%	1%	1%	>95%	5%	20%	1%	5%	1%	90%	25%	35%	75%	1%	50%

CED	BW	WW	YW	M	TM	CEM	SC	REA	IMF	FT	Hfr Prg	Stay	CowWt	TI	FI
6.7	-0.9	38	77	4	24	3.27	0.88	0.8	0.56	0.03	3.61	2.69	3.83	5.13	3.8
80%	>95%	1%	1%	80%	3%	40%	30%	1%	>95%	90%	10%	25%	85%	10%	50%



Never Surrender of Salacoa 803D9

You've all heard the buzz around the breed about the 1912 cow family and here's an amazing opportunity to own genetics directly from the source. **Linz Lady 337-8269** is the matriarch who began the legacy. There is a flush out of this mating on the ground at Cold Creek that are standouts. The Lady cow family is growing in popularity for good reason as her genomic profile boasts 13 traits and indices in the breeds upper 25%, led by 1% REA, Term, and BB, 2% YW, IMF, and NC. Look at her birth to yearling spread. We believe **Never Surrender** only enhances her genomic profile.

Consigned by Cold Creek Ranch

Selling 5 embryos.



Never Surrender 803D9 x Linz Lady 337-8269

Embryo Package from East Ridge Cattle

214 SUHN'S BUSINESS LINE 30D26 x SA/ERC MS BEACON 541G12

SUHN'S BUSINESS LINE 30D26
R10327046

VF -OAKS ONLINE 918Y3
SUHN'S MISS NORTH STAR 30A

SA/ERC MS BEACON 541G12
R10418571

SUHN'S MAJESTIK BEACON 30C
MS PATTON 541Z4

CED	BW	WW	YW	M	TM	CEM	SC	REA	IMF	FT	Hfr Prg	Stay	CowWt	TI	FI
-0.4	2.3	42	76	1	23	0.62	1.83	0.62	0.09	-0.012	9.81	2.15	3.02	3.59	3.69
40%	60%	55%	50%	80%	75%	95%	95%	10%	10%	>95%	75%	30%	6%	25%	55%

CED	BW	WW	YW	M	TM	CEM	SC	REA	IMF	FT	Hfr Prg	Stay	CowWt	TI	FI
1.8	1.6	31	52	1	16	2.07	0.91	0.1	-0.12	-0.008	8.56	1.45	6.33	1.68	2.44
95%	95%	10%	10%	>95%	35%	>95%	1%	5%	45%	10%	2%	15%	70%	15%	10%



Suhns Business Line 30D26

SA/ERC Ms Beacon 541G12 is sired by Beacon out of a Patton x 541M40 that shows up in so many pedigrees, and by **Business Line**. She is a full sister to the \$30,000 541Z2 that was sold to Villa Ranch at the IVPAS in Houston.

Consigned by East Ridge Cattle

Selling 5 embryos.



SA/ERC Ms Beacon 541G12

Embryo Package from Cold Creek Ranch

215 MC BLUE BLOOD 129H18 X CCR LADY ATLANTA 1912H4

MC BLUE BLOOD 129H18
UB10480215

BWCC BIG TOWN 192B16
MC MS RESOURCE 129A15

CCR LADY ATLANTA 1912H4
UB10473688

ATLANTA OF SALACOA 488Z
COLD CREEK LADY PASSPORT 1912C

CED	BW	WW	YW	M	TM	CEM	SC	REA	IMF	FT	Hfr Prg	Stay	CowWt	TI	FI
9.9	-2.5	29	54	13	27	0.56	1.1	0.74	0.24	0.018	13.1	3.08	0.74	3.61	4.19
5%	4%	30%	30%	15%	20%	>95%	10%	2%	20%	85%	1%	2%	60%	15%	2%

CED	BW	WW	YW	M	TM	CEM	SC	REA	IMF	FT	Hfr Prg	Stay	CowWt	TI	FI
6.3	-0.2	32	53	3	20	2.29	0.93	0.45	0.37	0.022	6.48	0.98	-8.98	3.33	2.13
25%	30%	15%	25%	95%	45%	90%	15%	10%	10%	95%	15%	45%	15%	10%	55%

Here's another opportunity to join in on the Lady family of cows. Here's an Atlanta out of 1912C herself. **CCR Lady Atlanta 1912H4** is mated to the \$150,000 **MC Blue Blood 192H18**. He is syndicated and the only way to get in on his genetics is through purchasing embryos or live animals. Wise breeders are getting in early and what better way than with the Lady cow family? This Lady posts 10 traits in the top 30%. Like John Maurer would say, "Take Advantage".

Consigned by Cold Creek Ranch

Selling 5 embryos.



MC Blue Blood 129H18



Cold Creek Lady Passport 1912C

Watch & bid online for FREE at

DVAuction
Broadcasting Real-Time Auctions



Can't make the sale? Bid from home with DV Auction's "real-time" internet bidding service!

Buying online is as easy as 1, 2, 3...

1. Create an account at www.dvauction.com under the "register" tab
2. Apply for bidding approval by clicking on the "details" tab at least 24 hours prior to the auction-a DV representative will notify you once you have been approved
3. Tune in for the sale and make you purchases!

After the sale, contact the sale manager or owner to arrange transportation and payment. **High speed internet** is required for successful bidding-be sure to check the lag-time monitor in the top left corner to ensure real-time broadcasts.

Proxy Bidding-if you can't make time to watch the sale, register a proxy bid and let our system represent your bid while you're away. Look for the "proxy bid" tab on the auction listing, and fill in your maximum bids. We'll handle the rest!

Having troubles? During the auction, you can type a message to the operator at any time for assistance. Our full-time support team can also always be reached at (402) 474-5557.

DVAuction
Broadcasting Real-Time Auctions

Full Service Livestock Marketing

Video - Photography - The Stock Exchange - Ring Service - Banner Ads - Onsite Viewing Service

Herd Sire Prospects

302 LF MR TRADEMARK 134K

Born: 5/9/22 R10514339 Gen: 2 PHN: 134K From Lykins Farm

MR LOF TRADEMARK 517E
R10359067

MC TRADEMARK 30X3
MISS LOF 220

MC ABRAMS 468T22
MS IRON FARM 789G5-30R
SVF MR 31S8 UB
SUHN'S MS NEXT STEP 416T23

ABF MS ON TASK 134F3
R10390976

ON TASK OF SALACOA 23Y42
CCC MS 915 LUCKY 134R

CADENCE OF BRINKS
SVF MS 23M28
JLS LUCKY 915L3
CCC MS 376 TYSON 134N13

DDPC

BW	WW	YW	REA	FT	IMF										
71 (95%)															
CED	BW	WW	YW	M	TM	CEM	SC	REA	IMF	FT	Hfr Prg	Stay	Cow Wt	TI	FI
4.2	0	27	54	13	27	-	0.34	0.27	0.06	-0.001	3.48	1.23	-0.64	2.66	2.92
55%	40%	40%	30%	15%	20%	-	70%	40%	50%	35%	45%	40%	50%	30%	25%

LF Trademark 134K is by LOF Trademark 517E, which traces back to the 416 cow family. Here in the Southeast, you are familiar with the Lazy One Farm prefix from the belated Mr. Clarence Tays from Tennessee who was a corner post in the breed. His dam is a combination of Salacoa Valley and Coldwater Cattle Company breeding. Placing 12 of his traits or indices in the breed's upper 40%. A balanced growth bull with 15% Milk, 20% TM, and 25% Fertility. If you're looking to make replacement heifers, he's worth a look.



MC Trademark 30X3 ~ Paternal Grand sire of Lot 302

301 CJB 21K

Born: 1/25/22 R10488791 Gen: 4 PHN: 21K From Stewart Brangus

NEVER SURRENDER OF SALACOA 803D9
R10318183

MC BOULDER 889Z14
MS BRINKS LOMBARDI 803S25

MC SOMETHING SPECIAL 129W14
MC MS EXTRAVAGANT 889X4
LOMBARDI OF BRINKS 468N10
MISS BRINKS KO 803J

CJB GUARDIAN 21C
R10284981

CRC GUARDIAN 9U8U5
MS THOMAS TRACTION 2W1

CSONKA OF BRINKS 30R4
MISS 4L BEST BET 9U8P5
AV TRACTION 419S2
MS THOMAS AJAX-2T1

DDPC

BW	WW	YW	REA	FT	IMF										
71 (95%)	729 (100%)	1251 (100%)													
CED	BW	WW	YW	M	TM	CEM	SC	REA	IMF	FT	Hfr Prg	Stay	Cow Wt	TI	FI
4.9	1.5	39	72	6	26	4.81	0.81	0.51	-0.02	0.005	6.13	1.85	5.23	3.14	3.02
45%	80%	10%	10%	75%	20%	15%	2%5	10%	75%	55%	20%	20%	80%	20%	25%

Sired by the breed changing Never Surrender of Salacoa 803D9 and out of the 2 cow family from Don and Keith Thomas herd in Missouri. He has 11 traits and indices in the breed's upper 25% including 10% WW, YW, REA and 20% TM, HP, Stay, Term and 25% SC, Fert, and NC. He comes in a user-friendly package. Take advantage.



CJB 21K

183 NOBLE 30K

Born: 10/23/22 R10534798 Gen: 1 PHN: 30K From M Quick Farms

HRF NOBLE 468G
UB10405847

RINGO OF HIGH ROCK 23D2
MS DMR EL DORADO 468E21

TEN X OF MAJESTIK
LM MS MILLHOUSE 23B5
DMR ELDORADO 30B15
MS BRINKS CSONKA 468W13

HRF MS SUPER UNITAS 30D10
R10332678

SUPERFORTRESS OF MAJESTIK 803B3
MS BRINKS UNITAS 30T94

EISENHOWER OF SALACOA 23Y69
MS BRINKS LAMBERT 803T6
UNITAS OF BRINKS 361R6
MS BRINKS ALI 30P25

BRANGUS
GE-EPDS

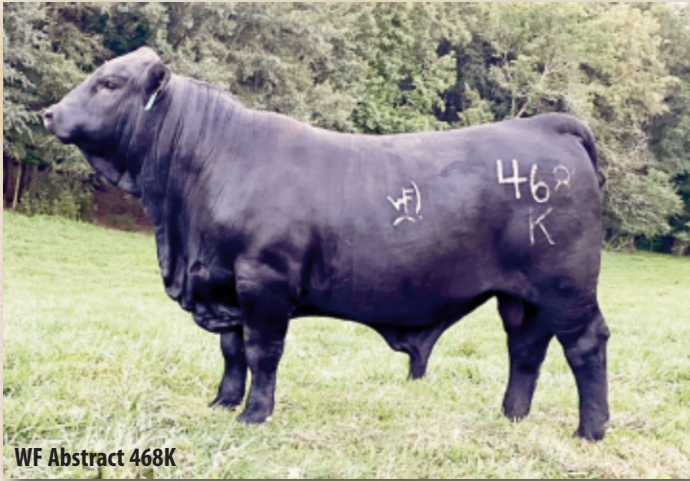
BW	WW	YW	REA	FT	IMF										
77 (105%)	683 (100%)														
CED	BW	WW	YW	M	TM	CEM	SC	REA	IMF	FT	Hfr Prg	Stay	Cow Wt	TI	FI
-0.8	1.8	29	55	9	24		0.67	0.31	0.15	0.009	5.72	1.39	1.13	2.7	2.6
95%	85%	30%	30%	45%	30%	%	35%	35%	35%	65%	20%	35%	60%	30%	40%

Study your lesson, 30K goes back to 30T94, the great Unitas daughter that worked so well at Cooley, the 101, and Lake Majestik. Having nine traits in the upper 35% of the breed, I call him balanced. 30K is a very docile young bull.



Noble 30K

Herd Sire Prospects



WF Abstract 468K

299 WF ABSTRACT 468K

Born: 3/17/22 UB10496166 Gen: 1 PHN: 468K

From Pine Knot Cattle Co.

VOREL ABSTRACT 25E9
UB10381649

MAR INNOVATION 251
VOREL MS 30T 25Z

CONNEALY IMPRESSION
MAR FINAL KAHUNA 856
SUHN'S AFFIRMED 30T
VOREL MS NEWT 2 / 25W
CONKA OF BRINKS 30R4
MISS 4L BEST BET 9U8P5
TJM CORONADO 535X
MS ROBERTS CONKA 468U2

PB MS GUARDIAN 468D
R10332936

CRC GUARDIAN 9U8U5
RYS MISS C 535X-468A7

BW	WW	YW	REA	FT	IMF										
67 (87%)	596 (100%)	883 (100%)													
CED	BW	WW	YW	M	TM	CEM	SC	REA	IMF	FT	Hfr Prq	Stay	Cow Wt	TI	FI
9	-1.7	39	68	6	26	3.37	1.08	0.39	0.16	0	6.34	2	7.6	3.68	3.3
10%	10%	10%	15%	75%	20%	55%	10%	25%	30%	40%	15%	20%	90%	15%	15%

WF Abstract 468K was purchased at weaning from our good friends at Windlass Farm. We were impressed with his pedigree and exceptional EPDs then, and we are truly impressed with how he has matured. He is a UB2, docile, calving ease prospect with quite possibly the most balanced set of EPDs on any bull we have ever offered. He boasts 12 EPDs in the top 25% of the breed, led by 10% CED, BW, WW and SC along with top 15% for YW, TI, HPG, and FI. We feel he would be a great choice to help improve BW and fertility on your next calf crop.



Vorel Abstract 25E9 ~ Sire of Lots 299, 304

304 WF ABSTRACT 594K

Born: 3/18/22 UB10496167 Gen: 1 PHN: 594 K

From Windlass Farm

VOREL ABSTRACT 25E9
UB10381649

MAR INNOVATION 251
VOREL MS 30T 25Z

CONNEALY IMPRESSION
MAR FINAL KAHUNA 856
SUHN'S AFFIRMED 30T
VOREL MS NEWT 2 / 25W
CONKA OF BRINKS 30R4
MISS 4L BEST BET 9U8P5
WR DUKE 228/F
WR MS TRANSFORMER VI 594N3

MS DMR GUARDIAN 594A11
R10254763

CRC GUARDIAN 9U8U5
WR MS DUKE 594S7

BW	WW	YW	REA	FT	IMF										
78 (102%)															
CED	BW	WW	YW	M	TM	CEM	SC	REA	IMF	FT	Hfr Prq	Stay	Cow Wt	TI	FI
1.3	0.9	38	69	4	23	2.71	1.15	0.43	0.24	0	6.11	2.41	6.22	3.65	3.85
85%	65%	15%	10%	90%	35%	80%	10%	20%	20%	40%	20%	10%	85%	15%	4%

Docile natured UB2 bull. He demonstrates nine EPD traits in the top 25%, including top 15% WW and Stay, and top 10% YW, SC and fertility index. We are excited to see what he can do with a herd on his own.



ELC Mr Cash Flow 96J12

303 ELC MR CASH FLOW 96J12

Born: 9/26/21 UB10480809 Gen: 1 PHN: 96J12

From EC Brangus, LLC

DMR CASH FLOW 535F30
UB10386538

S A V RESOURCE 1441
MS DMR CORONADO 535A8

RITO 707 OF IDEAL 3407 7075
S A V BLACKCAP MAY 4136
TJM CORONADO 535X
SVF MS 535M31
CB FINAL CUT 924X
OAKS MS PATTON 302X3
DMR TRIBUTE 415Z46
ELC MS HOMBRE 96A4

ELC MS THREE D 96F4
R10392424

TJM THREE D 302A
ELC MS TRIBUTE 96D12

BW	WW	YW	REA	FT	IMF										
75 (95%)	630 (94%)	1162 (99%)	10.03 (84%)	0.08 (49%)	2 (87%)										
CED	BW	WW	YW	M	TM	CEM	SC	REA	IMF	FT	Hfr Prq	Stay	Cow Wt	TI	FI
4	0.6	45	78	6	29	1.07	0.71	0.25	0	-0.008	7.3	1.63	0.14	3.46	3.14
55%	55%	4%	5%	75%	15%	>95%	35%	45%	70%	15%	10%	30%	55%	15%	20%

This Cash Flow son is parent-verified. He was sired by DMR Cash Flow 535F30 and is out of a 3D daughter. He is in the top 5% of the breed for WW, YW and Heifer Preg. And top 20% for TM, Fat and Fertility Index. He is deep-bodied with lots of muscle. He will deliver first-generation calves when mated with a Brangus female.

COMMERCIAL FEMALE OFFERING

We are very proud to offer this fine set of commercial females. Many are sired by or bred by an Addison Brangus Farms bull either by natural service or AI. We think this is the best commercial offering that we have had thus far. We strive to increase the quality of our commercial female offering each year, so our customers can continue to improve their cattle programs as well.

Lots 217-227 Consigned by High Rock Farms

- 2 Head - F1 Braford Tiger Stripe heifers bred to calving ease Ultrablack bull. Pasture exposed 1/10/23 to 8/10/23.
- 2 Head - Brahman heifers bred to calving ease Ultra Black bull. Pasture exposed 2/15/23 to 8/15/23.
- 2 Head - Ultrablack sired heifers. 1 baldy and 1 black. Bred to calving ease Brangus bull. Pasture exposed 6/13/23 to 9/15/23.
- 2 Head - Ultrablack heifers bred to calving ease Brangus bull. Pasture exposed 6/13/23 to 9/15/23.
- 3 Head - 2 Brangus and 1 super baldy heifer. Bred to calving ease Brangus bull. Pasture exposed 6/13/23 to 9/15/23.

Lots 228-242 Consigned by K&K Farms

- 7 Head - 18-month-old commercial Angus cross heifers. Exposed to Addison Brangus Farms bull from 6/2023 to sale day. Due to calve in spring 2024.
- 3 Head - 16-month-old commercial Brangus cross open heifers sired by Addison Brangus Farms bull.
- 1 Head - 16 month old Angus cross commercial heifer.

Lots 228-242 Consigned by J.B. Dyer

- 2 Head - 16-month-old commercial super baldy heifers sired by Addison Brangus Farms bull.
- 1 Head - 18-month-old commercial Angus cross heifer. Exposed to Addison Brangus Farms bull from 6/2023 to sale day. Due to calve in spring 2024.
- 1 Head - 16-month-old Angus cross commercial heifer.

Lots 243-245 Consigned by Addison Brangus Farms

- 1 Head - Commercial Brangus heifers, C261K, AI'd to DMR Kingdom 535G45 on 5/18/23 and exposed to ABF Empire 23K from 6/1/23 to 7/28/23.
- 1 Head - Commercial Brangus heifer, C262K, AI'd to DMR Kingdom 535G45 on 5/18/23 and exposed to ABF Empire 23K from 6/1/23 to 7/28/23.
- 1 Head - Commercial Brangus heifer, C263K, AI'd to DMR Kingdom 535G45 on 5/18/23 and exposed to ABF Empire 23K from 6/1/23 to 7/28/23.

Lots 246-255 Consigned by Cedar Junction Brangus

- 9 Head - Full blood commercial Brangus heifers, 18 months old AI'd to MC Something Special 889Y12, R10203254 on 7/29/23. Will be blood tested and confirmed bred by sale day. Those not bred will be sold open. No cleanup bull was used. AI one attempt only.

Lot 256 Consigned by Black Oak Cattle

- 1 Head - Commercial Brangus heifer AI'd to DMR Kingdom 535G45 on 5/18/23. Exposed to HRF Mr Edge 99D from 8/22/23 to sale day.

Lots 257-281 Consigned by Stinson Brangus

- 12 Head - Commercial heifers confirmed AI bred to ABF Black Granite 23D5. Pelvic measurements taken by vet.
- 9 Head - Commercial heifers bred to Brangus bulls. Pelvic measurements taken by vet.
- 4 Head - Commercial open heifers. Pelvic measurements taken by vet.

Lots 282-286 Consigned by McCrackin Farms

- 5 Head - Baldy heifers bred to Addison Brangus Farms bull due to calve in Spring 2024.

Lots 305-325 Consigned by Chad Cotton

- 10 Head - Spring bred Brangus type heifers. Black and black with white or motley face. 22 months old and 4-6 months bred to ABF Black Granite C113F.
- 11 Head - Open heifers sired by ABF Black Granite C113F out of registered and commercial UB cows. These heifers were born in February 2023, most are black with a couple of motley faces in the group. Guaranteed to be open and were vaccinated at weaning.



Semen Available from Addison Brangus Farms



ABF

Contact

Wayne Addison at (205) 412-5356
for semen on these two ABF AI Sires!



ABF BLACKSTONE 23G2

BRANGUS
GE-EPDS

Born: 2/13/19 R10410461 Gen: 4 BWCC Monument 10D7 x QCB Ms Nuff Said 23Z12

CED	BW	WW	YW	M	TM	CEM	SC	REA	IMF	FT	Hfr Prg	Stay	Cow Wt	TI	FI
4.2	-0.3	27	45	11	24	2.17	0.98	0.29	0.3	0.03	7.05	2.06	-8.06	2.75	3.45
55%	30%	40%	50%	25%	30%	90%	15%	35%	15%	95%	10%	15%	20%	30%	10%

ABF BLACK GRANITE 23D5

BRANGUS
GE-EPDS

Born: 9/4/16 R10333005 Gen: 1 MC Granite 834B x SVF Ms 535P9

CED	BW	WW	YW	M	TM	CEM	SC	REA	IMF	FT	Hfr Prg	Stay	Cow Wt	TI	FI
5.3	-0.5	20	48	6	16	3.59	0.86	0.3	0	0.035	4.07	1.53	-3.99	2.04	2.6
40%	25%	60%	45%	75%	75%	45%	20%	35%	70%	>95%	40%	30%	35%	50%	40%

TERMS AND CONDITIONS

BIDDING

Each animal will be sold to the highest bidder without reserve. The auctioneer will settle any disputes as to bids and his decision on such matters shall be final.

TERMS

Each animal becomes the risk of the purchaser as soon as sold, but it shall be the obligation of the seller to see that animals are fed and cared for until loaded for shipment or until the expiration of 48 hours after the sale, whichever occurs sooner. After 48 hours a maintenance fee of \$5 per day will be assessed until pickup, unless ABF arranges shipment.

SIGHT UNSEEN PURCHASES

Buyers may purchase through Wayne Addison at auction without viewing the cattle. For sight unseen purchases, the buyer has the right of inspection at the time of delivery. If the animal is deemed unsatisfactory, it may be reloaded on the delivery truck and returned to the farm of the seller at no obligation to the buyer. All transportation expenses will be the responsibility of the seller. If the animal is deemed unsatisfactory within one week of the purchase, the buyer may at their expense, return the animal to the farm of the seller for a full refund of the purchase price.

CERTIFICATE OF REGISTRY

A transferred certificate of registry will be furnished to the purchaser for each registered animal once proper settlement has been made.

HEALTH

Health papers suitable for interstate shipment will be furnished on all animals.

GENETIC CONDITIONS

Unless otherwise noted, all cattle selling are DDF either through testing or pedigree. Any DDC or DDPC cattle are so noted.

ANNOUNCEMENTS

Any changes from the information of any kind in this catalog will be provided in a sale day supplement sheet or announced from the auction block and such information shall take precedence over cataloged information.

BREEDING GUARANTEE

1. All animals are guaranteed to be breeders with the exception of: a) calves under 12 months of age; b) animals shown by purchaser after sale in which the guarantee (if any) shall be between the seller and the buyer; c) injury or disease occurring after the sale; d) gross negligence or willful misconduct on the part of the purchaser; e) death by any reason.
2. Any bull which settles cows by natural service and passes a fertility test made by competent veterinarians, mutually agreed upon by the buyer and seller, during any six month period of trial (provided for in paragraph 2 of the section of these sales terms and conditions entitled "Options and Privileges of Return or Adjustment") shall be considered a breeder. All partial interest bulls are guaranteed to produce freezable quality semen.

3. Safe in calf females have been examined by competent personnel and are so guaranteed.
4. Exposed females have been exposed but are not guaranteed to be safe in calf.
5. Open females have not been served and are so guaranteed.
6. Donor Females. a) A female is not guaranteed to be a breeder after the date of the sale when that female is to be used or attempted to be used, in an embryo transfer program, unless by separate agreement between the buyer and seller. b) Embryo transfer guarantee. Even though it is possible some of the female lots have worked successfully in our embryo transfer program in the past, and should in the future, there is no guarantee or warranty on future embryo production of any lot. Flush records are available upon request.

PREGNANCY DETERMINATION

The registered females in this sale noted safe in calf have been determined pregnant by physical palpation or ultrasound technology. Our best estimate of service sire will be given in the case of the females with both an A.I. sire and a natural breeding sire. Keep in mind this is our best estimate.

OPTIONS AND PRIVILEGES OF RETURN OR ADJUSTMENT

1. All claims for adjustment or refund must be made in writing within six months of the sale date.
2. In the event an animal is claimed to be a non-breeder, the animal may be returned to the farm of the breeder if in good condition and complying with the health requirements of their state. The seller shall be entitled to a six month trial following the return of the animal in which to prove that the animal is a breeder. If at the end of six months the seller is unable to prove the animal is a breeder, the seller shall at the option of the buyer replace the animal with another of equal value or issue a credit for the initial selling price. If the seller proves the animal to be a breeder, it shall be the obligation of the purchaser to take delivery of the animal and pay all expenses incurred for transportation.
3. If an animal is sold and at a later date proves not to be eligible for registration under association rules, the seller shall be obligated to make a satisfactory adjustment on the purchase price to the buyer, refund the purchase price or issue a credit for the initial selling price upon the return of the animal to the farm of the seller.
4. If an animal is sold and through DNA is proven to have incorrect parentage as represented by the certificate of registration, and for which the parentage can be determined, the seller shall be obligated to make a satisfactory adjustment on the purchase price to the buyer, refund the purchase price or issue a credit for the initial selling price upon the return of the animal to the farm of the seller.

RIGHTS AND OBLIGATIONS

1. The above terms and conditions of sale shall constitute a contract between the buyer and seller of each animal and shall be equally binding on both. Other than the guarantees and warranties stated above, no other warranties or guarantees are expressed or implied. Each sale or resale of an animal constitutes a separate transaction.
2. Addison Brangus Farms or any other person connected with the management of the sale assumes no liability, legal or otherwise.



THE TAG TELLS IT ALL BRANGUS[®] VIGOR

BRANGUS VIGOR - A PROCESS VERIFIED PROGRAM TO DIFFERENTIATE GENUINE BRANGUS SIRE FEEDER CATTLE FROM GENERIC INDICUS CROSSBREDS
BRANGUS VIGOR WILL DRIVE VALUE FOR BRANGUS SIRE FEEDER CALVES AND BUILD BUYER CONFIDENCE IN THE GROWYARD AND FEEDYARD SECTORS

BRANGUS VIGOR COMPONENTS

SOURCE AND AGE VERIFIED
840 EID TAG & BRANGUS VIGOR TAG
BRANGUS SIRE
HEALTH PROTOCOLS
BQA CERTIFICATION

WWW.GOBRANGUS.COM

5000

BRANGUS VIGOR

DEMAND A PREMIUM

To enroll your Brangus-sired feeder cattle in the Brangus Vigor program contact:
Darrell Wilkes, Ph.D. dwilkes@gobrangus.com 210-696-8231

INTERNATIONAL
BRANGUS
BREEDERS ASSOCIATION



Notes

ALBERT

INTERNATIONAL
BRANGUS



August 9-11, 2024 • Fort Worth, Texas
Celebrate Brangus in Courtown



It's gonna be Huge!



INTERNATIONAL
BRANGUS
BREEDERS ASSOCIATION
Celebrate Brangus in Courtown!



ADDISON BRANGUS FARMS
Wayne & Leisa Addison
1043 County Highway 130
Winfield, Alabama 35594
AddisonBrangusFarms.com

Presorted
First Class
US Postage
PAID
SlateGroup



ADDISON BRANGUS FARMS AND FRIENDS PERFORMANCE SALE

Saturday, October 14, 2023 ♦ 10 am CST
Cullman Stockyard ♦ Cullman, Alabama

