

ADDISON BRANGUS FARMS AND FRIENDS PERFORMANCE SALE

SATURDAY, OCTOBER 11, 2025 • 10 AM CST

GULLMAN STOCKYARD ~ GULLMAN, ALABAMA

Selling Registered Brangus & Ultrablack

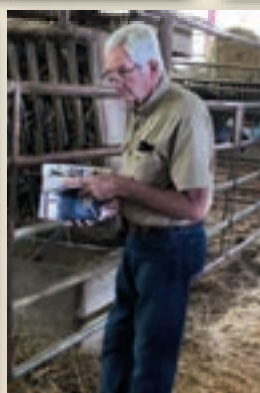
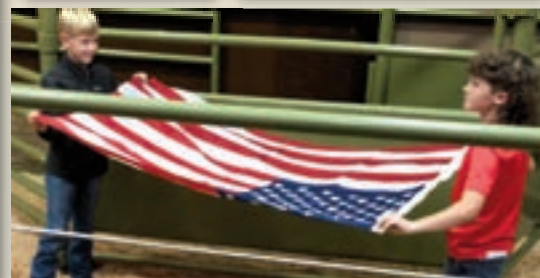
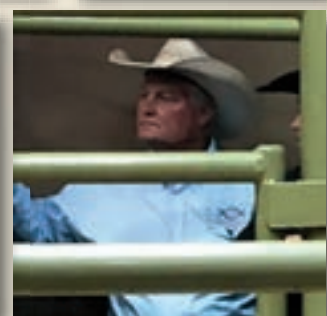
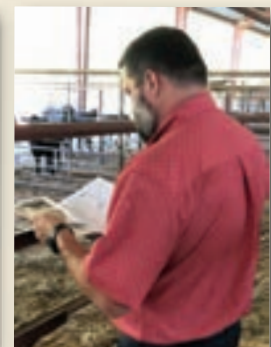
Selling Females, Bulls, Embryos, Semen & Commercial Females



*Featuring the True
Performance Cattle of the Southeast!*

2024 PERFORMANCE SALE

Sale Scenes



Addison Brangus Farms **PERFORMANCE SALE**

Leisa and I would like to welcome everyone to the 2025 Addison Brangus Farms and Friends Seventh Annual "Performance" Sale.

Leisa and I would like to welcome everyone to the 2025 Addison Brangus Farms and Friends Seventh Annual "Performance" Sale.

We are very excited to host our seventh annual sale! The Brangus and Ultrablack cattle in this sale represent our commitment, along with our sale partners' commitments, to the breed's most elite EPDs and superior performance cattle. We offer distinguished genetics and first-rate quality throughout the sale order.

First and foremost, we at Addison Brangus Farms wish to thank our Heavenly Father for allowing us to be where we are today. Our God has truly blessed us immeasurably, and we give Him all the glory. *Ephesians 5:20.*

Secondly, we want to express our sincerest gratitude to our outstanding sale partners who have labored diligently in preparing their animals for this event. We could not be here without you. The cattle in this sale represent numerous farms and ranches located widely over the Southeast.

Also, we would like to express our genuine appreciation to all of the following for their immense help with our sale: Catalog Coordinator, Lea Weinheimer; Auctioneer, Doak Lambert; Wade and Blaine Fisher; Travis Rocha and the staff at IDEAL Video Productions; Photographer, Darren Richmond; Ringmen, Jimmy Fetner, and Tim Dietrich; and last but not least, Hoagie and Callahan Parish and their crew at the Cullman Stockyard.

In conclusion, the Performance Sale offers a comprehensive variety of Brangus and Ultrablack cattle. These cattle include open and bred heifers, bred cows, cow/calf pairs, 3-N-1s, donor prospects, embryo lots, show animal prospects, and herd sire prospects. Also, following the registered sale, we will have our open and bred commercial heifer sale. Many of these commercial heifers will be sired by, exposed to, or AI'd to an Addison Brangus Farms bull.

The Addison Brangus Farms and Friends Performance Sale offers something for everyone. Please allow us to assist you in your cattle program.

Sincerely,

Wayne & Leisa

Wayne and Leisa

Wayne and Leisa Addison
(205) 412-5356



LEISA & WAYNE ADDISON



Addison Brangus Farms

PERFORMANCE SALE

Saturday, October 11, 2025 • 10 am CST

Cullman Stockyard, Cullman, Alabama

Hosted by Addison Brangus Farms



ADDISON BRANGUS FARMS

Wayne & Leisa Addison • (205) 412-5356
1043 County Highway 130
Winfield, Alabama 35594
AddisonBrangusFarms.com
addisonbrangusfarms@yahoo.com

Auctioneer

Doak Lambert
(972) 839-6485
License #908

Sale Day Contacts

Wayne Addison, (205) 412-5356
Jeff Thomas, (770) 289-6539
Dennis Hardin, (423) 619-0775

Sale Location

Cullman Stockyard
75 County Road 1339
Cullman, Alabama 35058
Located just 5 minutes east of Interstate 65 Exit 310 in Cullman.



Commercial Females Selling

Refer to page 46.

Accommodations

Hampton Inn • (256) 739-4444
6100 Alabama Highway 157 • Cullman, Alabama
• *Holiday Inn Express* • (256) 736-1906
2052 Hayes Drive NW • Cullman Alabama
• *Comfort Suites* • (256) 255-5999
2048 St Joseph Dr NW • Cullman, Alabama
• *La Quinta Inn & Suites* • (256) 775-9500
2054 St. Joseph Dr. NW • Cullman, Alabama

Publications Represented

Southern Livestock Standard
Special Assignment – Jimmy Fetner
Special Assignment – Tim Dietrich
Brangus Journal • *Alabama Cattleman*
Cattle Business in Mississippi

Catalog Production

The Horseshoe Group • Lea Weinheimer, (210) 872-2727

Photography - Darren Richmond, (423) 364-9281

Videography - Ideal Video Productions, (254) 319-5349

Air Transportation

Birmingham-Shuttlesworth International Airport

Trucking

Contact Clayton Williams, (706) 768-3533
Jake White (256) 736-3374 • Wayne Addison, (205) 412-5336

Load Out - Cattle may be loaded out during or after the sale and after proper settlement is made.

Health Papers - Health papers will be provided on each lot in the sale suitable for interstate shipment.

Terms and Conditions - Refer to page 47.

Sale Broadcast Live on

DVAuction.com

Refer to page 48 for more information.

DVAuction
Broadcasting Real-Time Auctions

SCHEDULE

FRIDAY, OCTOBER 10

12 Noon Cattle available for viewing
Cullman Stockyard

SATURDAY, OCTOBER 11

8 AM Coffee Available
8 AM Cattle available for viewing
10 AM **The Performance Sale**, Cullman Stockyard

SALE SITE

Cullman Stockyard • (256) 734-4531
Hoagie Parish • Callahan Parish
75 County Road 1339
Cullman, Alabama 35058
*Easily accessed from
I-65 & Highway 157*

PLEASE BRING THIS CATALOG WITH YOU SALE DAY!

CONSIGNORS

ADDISON BRANGUS FARMS

Wayne & Leisa Addison
(205) 412-5356
Winfield, Alabama
Lots 1, 1A, 3, 3A, 4, 4A, 5, 5A,
8, 8A, 34, 35, 45, 46, 48, 61,
62, 77, 78, 81, 94, 100, 105,
117, 118, 119, 120
Commercial Females
*Lots 132-136, 137-157,
171-176, 201-205*

ACE OF SPADES CATTLE COMPANY

Tyler Christy
(678) 488-2248
Taylorsville, Georgia
Lots 18, 18A

ACRES OF GRACE CATTLE COMPANY

John Hannah
(256) 214-6638
Blountsville, Alabama
Commercial Females
Lots 177-183

3G CATTLE

Casy George
(618) 924-0330
Dongola, Illinois
Lot 103

3S CATTLE FARMS, LLC

Billy & Chandler South
(662) 891-5360
Mantachie, Mississippi
Lots 21, 22, 30, 33, 36, 90, 98,
104, 106, 124

CEDAR JUNCTION BRANGUS

Chris Shelton, John Wooten
(662) 983-8024
Bruce, Mississippi
Lot 28

CLEGHORN FARMS

Paul Cleghorn, (256) 338-3888
Cullman, Alabama
Lot 125

COLD CREEK RANCH

Sean, Tom & Betty Davis
(404) 406-1428
Butler, Georgia
Lots 54, 55, 56, 60

CROOKED CREEK CATTLE COMPANY

McKayla Snow
(678) 858-1602
Athens & Wadley Georgia
Lots 71, 72, 73, 74, 101, 114, 128

DOUBLE H FARMS

Dennis Hardin
(423) 619-0775
Pikeville, Tennessee
Lot 50

FC CATTLE COMPANY

Howe Family
(770) 324-0941
Cartersville, Georgia
Lot 80

G&R BRANGUS

Larry Galloway
(256) 603-1945
David Roadruck
(256) 582-1950
Lot 42

HATCHEE FARMS

Chris Turner
(334) 368-0597
Greenville, Alabama
Lots 83, 84, 88

HOLT FARMS

Terrell Holt
(931) 638-0911
Ethridge, Tennessee
Commercial Females
Lots 194-197

HURRICANE CREEK BRANGUS

Thomas Cottrell
(256) 762-0237
Loretto, Tennessee
Lots 10, 10A, 53, 65, 91, 102
Commercial Females
Lots 198-199

RL JOHNSON FARMS

Lee Johnson
(352) 281-4946
Alachua, Florida
Lots 75, 76, 93

JRT BRANGUS

Jeff Thomas
(770) 289-6539
Cumming, Georgia
Lots 2, 2A, 6, 6A, 109, 110, 111

LAS PALOMAS RANCH

Jose Medina
(678) 384-9447
Marietta, Georgia
Lots 12, 12A, 13, 13A, 14, 14A,
15, 15A, 17, 17A, 26, 29, 85, 86,
87, 92

LYKINS FARMS

Denver & Peggy Lykins
(606) 316-0982 • (606) 694-4605
Olive Hill, Kentucky
Lot 79

M & K FARM

Mike Quick
(256) 843-9400
Arab, Alabama
Lot 82

MOSES CATTLE

Caleb Staley
(919) 548-3946
Bear Creek, North Carolina
Lot 52

JOHN NORRIS

(205) 412-3398
Winfield, Alabama
Commercial Females
Lots 158-160, 186-193

PINE KNOT CATTLE CO.

Jeremy & Hayley Sessoms
(336) 408-8174
Bennett, North Carolina
Lots 95, 96, 97

QUAIL VALLEY FARMS

Ricky Cleveland
(205) 533-5049
Oneonta, Alabama
Lots 112, 113

RAYBURN BROTHERS FARM

Harley Rayburn
(606) 261-0989
Olive Hill, Kentucky
Lot 89

RIVER BEND FARMS

David Chadwick
(334) 349-1969
Tyler, Alabama
Lots 27, 51, 66, 67

RIVER VALLEY FARMS

Cody Bailey
(770) 324-0941
Calhoun, Georgia
Lots 69, 115, 116, 129
Commercial Females
Lots 200, 208, 208A

SEWELL CATTLE COMPANY

Gary Sewell
(319) 475-2638
El Dorado, Arkansas
Lots 9, 9A, 63

SPITZER FARMS

Dale Spitzer
(205) 283-7105
Remlap, Alabama
Commercial Females
Lots 161-164, 184-185

STAGGS FARMS

Steve Staggs
(928) 863-4811
Portland, Tennessee
Lots 23, 24, 25
Commercial Females
Lots 206, 207

STEWART BRANGUS

Cliff & Judy Stewart
(256) 366-0718
Leighton, Alabama
Lot 123

VANNA FARMS

Lee McGarity,
(706) 498-7695
Royston, Georgia
Lots 40, 41, 44, 68, 99

WILLMORE FARMS

Tim Willmore
(615) 478-3105
Gallatin, Tennessee
Lots 47, 57, 58, 64
Commercial Females
Lots 165-170

SPRING THREE-IN-ONES

1

QCC MS BEDROCK 129J

Born: 11/5/21 R10514367 Gen: 1 PHN: 129J

From Addison Brangus Farms

BWCC BEDROCK 10E88
UB10383155

MC BOULDER 889Z14

MC SOMETHING SPECIAL 129W14

BWCC MS RESOURCE 10A2

MC MS EXTRAVAGANT 889X4

MC BIG DEAL 889W6

S A V RESOURCE 1441

BWCC MS NUFF SAID 10X

MC REAL DEAL 541R3

MC MS EXTRAVAGANT 889P4

LE MS BIG DEAL 129D1
R10322690

MC MS JETHRO 129X24

MC JETHRO 00S3

MC MS 344 TRAVEL 129M9

BW	WW	YW	REA	FT	IMF
64 (100%)	544 (100%)	867 (100%)	(%)	(%)	(%)
CED	BW	WW	YW	M	TM
5.8	0.3	32	65	6	23
40%	55%	15%	10%	80%	30%
CEM	SC	REA	IMF	FT	Hfr Prg
4	0.78	0.54	0.34	0.043	8.51
20%	20%	5%	10%	95%	10%
Stay	Cow Wt	TI	FI		
3.25	12.23	3.56	3.75		
>95%	5%	50%			

Ms Bedrock comes from Black Water genetics. She has 13 EPD traits in the breed's top 40% or better, including top 5% REA, 10% YW, and 15% WW. 129J has a 328-day CI. Beside her is a bull calf sired by our good Empire son, 23K. **AI'd to DMR Empire 795D12, 10323531 on 5/29/25. Pasture exposed to ABF Raindance 568L, 10543780 from 6/10/25 to 7/31/25.**



QCC Ms Bedrock 129J

1A

ABF EMPIRE 23K 129N

Born: 3/13/25 R10583265 Gen: 2 PHN: 129N

From Addison Brangus Farms

ABF EMPIRE 23K
R10504952

DMR EMPIRE 795D12

TJM THREE D 302A

ABF MS SOMETHING SPECIAL 23F9

MS DMR JETHRO 795Y2

MC SOMETHING SPECIAL 129W14

BWCC BEDROCK 10E88

ABF MS CSONKA 740Z13 23B2

MC BOULDER 889Z14

QCC MS BEDROCK 129J
R10514367

LE MS BIG DEAL 129D1

BWCC MS RESOURCE 10A2

MC BIG DEAL 889W6

MC MS JETHRO 129X24

BW	WW	YW	REA	FT	IMF
72 (93%)					
CED	BW	WW	YW	M	TM
8.3	-0.7	29	56	6	21
15%	30%	30%	25%	75%	40%
CEM	SC	REA	IMF	FT	Hfr Prg
4.47	0.71	0.4	0.23	0.029	8.47
20%	30%	25%	25%	95%	10%
Stay	Cow Wt	TI	FI		
3.26	6.8	2.98	4.33		
85%	20%	30%			

Lot 1A: Bull Calf.



ABF Empire 23K 129N

2

JRT MS ELDORADO 237L3

Born: 3/6/23 R10534271 Gen: 6 PHN: 237L3

From JRT Brangus

DMR ELDORADO 30B15
R10284830

TJM CORONADO 535X

CB HOMBRE 541T3

SUHN'S MISS PATTON 30X6

MS BRINKS LAMBERT 535T4

PATTON OF BRINKS 30T22

ROME OF SALACOA 535Z

SUHN'S MS DUKE 30M

STONEWALL OF RRR 222W6

JRT MS ROME 237F
R10378605

JRT MS 237Z

MS SVF 23586 535X20

QCB GARRETT 27Y22 ET

CNF MISS GLORY 237X2

BW	WW	YW	REA	FT	IMF
75 (98%)	585 (99%)	876 (104%)			
CED	BW	WW	YW	M	TM
9.3	-2.1	21	40	-1	9
10%	10%	45%	45%	>95%	95%
CEM	SC	REA	IMF	FT	Hfr Prg
4.29	0.9	0.05	0.17	0	4.71
30%	15%	70%	30%	45%	30%
Stay	Cow Wt	TI	FI		
2.42	-9.87	2.09	4.87		
30%	15%	35%	15%		

JRT MS Eldorado 237L3 is a first calf heifer with a very nice Payback heifer calf at side. Fertility and Carcass Queen describe her best. She posts an incredible 11 EPDs in the top 35%. Eldorado daughters have made their mark in the Brangus breed and she will be no different! On top of that, she bred back to her AI Sire DMR Visionary 468K5, which we expect to be an exciting calf. **AI'd to DMR Visionary 468K65, 10505222 on 5/3/25. Pasture exposed to Sewells Desperado 99L12, 10532689 from 5/12/25 to 8/28/25. Safe to AI.**

2A

JRT MS PAYBACK 237N2

Born: 3/18/25 UB10590829 Gen: 1 PHN: 237N2

From JRT Brangus

TTT JRT PAYBACK 541J34
UB10497456

DMR CASH FLOW 535F30

S A V RESOURCE 1441

MS WAT EMPIRE 541G2

MS DMR CORONADO 535A8

DMR EMPIRE 795D12

DMR ELDORADO 30B15

WAT MS GUARDIAN 541C3

TJM CORONADO 535X

SUHN'S MISS PATTON 30X6

JRT MS ELDORADO 237L3
R10534271

JRT MS ROME 237F

ROME OF SALACOA 535Z

JRT MS 237Z

BW	WW	YW	REA	FT	IMF
62 (79%)					
CED	BW	WW	YW	M	TM
7.6	-1.2	32	58	-2	14
20%	15%	15%	15%	>95%	75%
CEM	SC	REA	IMF	FT	Hfr Prg
0.77	0.21	0.19	0.008	7.06	3.38
40%	25%	70%	15%	10%	40%
Stay	Cow Wt	TI	FI		
-3.7					

Payback heifer with 10 EPDs in the top 25%.

Lot 2A: Heifer Calf.

SPRING THREE-IN-ONES

3

QCC MS BEDROCK 406J

Born: 12/20/21 R10513803 Gen: 1 PHN: 406J

From Addison Brangus Farms

BWCC BEDROCK 10E88
UB10383155

MC BOULDER 889Z14
BWCC MS RESOURCE 10A2

WCR MS RAMON 406E05
R10348228

CB RAMON 415X27
OAKS MS CSONKA 406Y11

MC SOMETHING SPECIAL 129W14
MC MS EXTRAVAGANT 889X4
S A V RESOURCE 1441
BWCC MS NUFF SAID 10X
SUHN'S AFFIRMED 416N4
MS BRINKS BRIGHT SIDE 415R23
CSONKA OF BRINKS 30R4
MS BRINKS BRIGHT SIDE 406P17

BW			WW			YW			REA		FT		IMF		
65 (100%)			510 (100%)			891 (100%)									
CED	BW	WW	YW	M	TM	CEM	SC	REA	IMF	FT	Hfr Prg	Stay	Cow Wt	TI	FI
3.9	1.8	37	71	8	27	2.12	0.82	0.52	0.3	0.037	6.81	2.32	-7.55	3.61	3.75
65%	90%	5%	3%	60%	15%	95%	15%	10%	15%	>95%	15%	30%	25%	5%	50%

Another Bedrock daughter, she has 10 EPD traits in the breed's top 30% or better, including top 3% YW, 5% WW and 10% REA. 406J has a 355-day CI and is dragging a very impressive heifer calf that is out of ABF EMPIRE 23K. AI'd to DMR Kingdom 535G45, 10434685 on 5/29/25. Pasture exposed to ABF Raindance 568L, 10543780 from 6/10/25 to 7/31/25.



3A

ABF MS EMPIRE 23K 406N

Born: 3/4/25 R10583274 Gen: 2 PHN: 406N

From Addison Brangus Farms

ABF EMPIRE 23K
R10504952

DMR EMPIRE 795D12
ABF MS SOMETHING SPECIAL 23F9

QCC MS BEDROCK 406J
R10513803

BWCC BEDROCK 10E88
WCR MS RAMON 406E05

TJM THREE D 302A
MS DMR JETHRO 795Y2
MC SOMETHING SPECIAL 129W14
ABF MS CSONKA 740Z13 23B2
MC BOULDER 889Z14
BWCC MS RESOURCE 10A2
CB RAMON 415X27
OAKS MS CSONKA 406Y11

BW		WW		YW		REA		FT		IMF					
76 (106%)															
CED	BW	WW	YW	M	TM	CEM	SC	REA	IMF	FT	Hfr Prg	Stay	Cow Wt	TI	FI
5.4	0.9	34	61	7	24	3.54	0.73	0.39	0.21	0.027	7.63	2.79	-3.09	3.02	4.33
45%	70%	10%	10%	70%	25%	55%	25%	20%	25%	95%	15%	20%	45%	15%	30%

Lot 3A: Heifer Calf.



ABF Ms Empire 23K 406N



SPRING THREE-IN-ONES

4

ABF MS THREE D 468H4

Born: 9/2/20 R10458510 Gen: 5 PHN: 468H4 From Addison Brangus Farms

TJM THREE D 302A
R10244716

MS DMR GUARDIAN 468C7
R10296914

CB FINAL CUT 924X

OAKS MS PATTON 302X3

CRC GUARDIAN 9U8U5

MS BRINKS NEW ERA 468P14

MC REVELATION 129T
RBM MS GUNS 924T3
PATTON OF BRINKS 30T22
MISS BRINKS GERONIMO 302H6
CSOKA OF BRINKS 30R4
MISS 4L BEST BET 9U8P5
NEW ERA OF BRINKS 54TJ37
MISS BRINKS CADENCE 468G15

BW			WW			YW			REA		FT		IMF				
65 (100%)			629 (100%)			967 (100%)			12.45 (100%)		0.21 (100%)		3.25 (100%)				
CED	BW	WW	YW	M	TM	CEM	SC	REA	IMF	FT	Hfr	Prg	Stay	Cow	Wt	TI	FI
5.3	-0.7	24	41	6	19	5.34	0.62	0.33	-0.2	-0.02	9.15	3.94	14.47	1.41	5.98		
45%	25%	35%	45%	80%	50%	10%	30%	25%	>95%	2%	5%	2%	>95%	60%	3%		

468H4 is straight out of the famous Three D bull. She has 14 EPD traits breed average or better, including top 25% BW, 35% WW and 45% YW. Ms Three D has a heifer calf at side. **Pasture exposed to ABF Raindance 568L, 10543780 from 5/22/25 to 7/31/25.**



ABF Ms Three D 468H4 & ABF Ms Blackstone 468N2

4A

ABF MS BLACKSTONE 468N2

Born: 4/21/25 R10583276 Gen: 5 PHN: 468N2 From Addison Brangus Farms

ABF BLACKSTONE 23G2
R10410461

ABF MS THREE D 468H4
R10458510

BWCC MONUMENT 10D7

QCB MS NUFF SAID 23Z13

TJM THREE D 302A

MS DMR GUARDIAN 468C7

MC BOULDER 889Z14
BWCC MS RESOURCE 10A10
MC NUFF SAID 889T50
SVF MS LEADGUN 23S85
CB FINAL CUT 924X
OAKS MS PATTON 302X3
CRC GUARDIAN 9U8U5
MS BRINKS NEW ERA 468P14

BW		WW		YW		REA		FT		IMF					
64 (90%)															
CED	BW	WW	YW	M	TM	CEM	SC	REA	IMF	FT	Hfr Prg	Stay	Cow Wt	TI	FI
6.6	-1.6	20	35	8	18	4.24	0.75	0.28	0.03	0.005	8.57	3.05	3.92	1.71	4.77
30%	10%	45%	60%	60%	55%	30%	20%	30%	60%	60%	10%	15%	80%	50%	20%

Lot 4A: Heifer Calf.



QCC Ms Bedrock 468J & ABF Ms Modelo 1912K17 468N3

5

QCC MS BEDROCK 468J

Born: 11/8/21 R10514368 Gen: 1 PHN: 468J From Addison Brangus Farms

BWCC BEDROCK 10E88
UB10383155

LE MS BIG DEAL 468D1
R10322696

MC BOULDER 889Z14

BWCC MS RESOURCE 10A2

MC BIG DEAL 889W6

MS BRINKS DITKA 468S17

MC SOMETHING SPECIAL 129W14
MC MS EXTRAVAGANT 889X4
S A V RESOURCE 1441
BWCC MS NUFF SAID 10X
MC REAL DEAL 54T1R3
MC MS EXTRAVAGANT 889P4
DITKA OF BRINKS 535N37
MISS BRINKS LEAD TIME 468L

MDS GRADING END TIME 10:00																	
BW		WW			YW			REA		FT		IMF					
62 (100%)		559 (100%)			899 (100%)												
CED	BW	WW	YW	M	TM	CEM	SC	REA	IMF	FT	Hfr	Prg	Stay	Cow	Wt	TI	FI
6.4	-0.1	38	69	12	31	4.14	0.74	0.47	0.24	0.033	8.23	3.02	-1.9	3.59	4.5		
30%	40%	5%	4%	25%	5%	35%	20%	10%	20%	>95%	10%	15%	50%	5%	25%		

Ms Bedrock has a nice, uniform udder and a very nice heifer calf at side. Her calf is out of our good Modelo son. 468J has 16 EPD traits in the breed's top 40% or better, including top 4% YW and 5% WW and TM. **Pasture exposed to ABF Raindance 568L, 10543780 from 5/22/25 to 7/31/25.**

5A

ABF MS MODELO 1912K17 468N3

Born: 6/6/25 R10584891 Gen: 2 PHN: 468N3 From Addison Brangus Farms

EB MODELO 1912K17
R10518074

QCC MS BEDROCK 468J
R10514368

T3 MODELO 129H4

MS DMR CORONADO 795C5

BWCC BEDROCK 10E88

LE MS BIG DEAL 468D1

BWCC BIG TOWN 192B16
PR MS HOLLYWOOD 129F10
TJM CORONADO 535X
MS DMR JETHRO 795Y2
MC BOULDER 889Z14
BWCC MS RESOURCE 10A2
MC BIG DEAL 889W6
MS BRINKS DITKA 468S17

MS DRINKS DATA 10017																	
BW		WW		YW		REA		FT		IMF							
66 (92%)																	
CED	BW	WW	YW	M	TM	CEM	SC	REA	IMF	FT	Hfr	Prg	Stay	Cow	Wt	TI	FI
7.8	-0.6	33	58	8	25	3.74	1.09	0.54	0.22	0.027	8.02	2.8	0.27	3.18	4.25		
15%	30%	10%	15%	60%	20%	50%	5%	5%	20%	95%	10%	20%	60%	10%	30%		

Lot 5A: Heifer Calf.

SPRING THREE-IN-ONES

6 ABF MS EMPIRE 468L

Born: 3/16/23 R10534197 Gen: 5 PHN: 468L

From JRT Brangus

DMR EMPIRE 795D12
R10323531

TJM THREE D 302A

MS DMR JETHRO 795Y2

CRC GUARDIAN 9U8U5

MS DMR GUARDIAN 468C7
R10296914

MS BRINKS NEW ERA 468P14

CB FINAL CUT 924X
OAKS MS PATTON 302X3
MC JETHRO 0053
MS BRINKS UPPERCUT 795R9
CSOKA OF BRINKS 30R4
MISS 4L BEST BET 9U8P5
NEW ERA OF BRINKS 541J37
MISS BRINKS CADENCE 468G15

BW		WW		YW		REA		FT		IMF					
67 (91%)		507 (94%)		775 (87%)		11.48 (101%)		0.13 (52%)		1.64 (55%)					
CED	BW	WW	YW	M	TM	CEM	SC	REA	IMF	FT	Hfr Prq	Stay	Cow Wt	TI	FI
7	-0.9	19	23	5	14	6.27	0.65	0.33	-0.19	-0.015	9.07	4.15	11.7	0.69	6.29
25%	20%	50%	85%	85%	75%	2%	30%	25%	>95%	4%	5%	2%	95%	90%	2%

ABF Ms Empire 468L is a first calf Empire daughter out of the great 468C7 donor from Addison Brangus Farms. She posts an incredible 11 EPDs in the top 30%. She has an outstanding heifer calf at side that you will really like. She sells as exposed. **Pasture exposed to Sewells Desperado 99L12, 10532689 from 5/12/25 to 8/28/25.**

6A JRT MS BIG TOWN 468N2

Born: 4/6/25 R10590830 Gen: 5 PHN: 468N2

From JRT Brangus

QVF BIG TOWN 19L
R10524186

BWCC BIG TOWN 192B16

MS SALACOA STONEWALL 19E.

DMR EMPIRE 795D12

ABF MS EMPIRE 468L
R10534197

MS DMR GUARDIAN 468C7

MC NUFF SAID 889T50
BWCC MS REVELATION 192W8
STONEWALL OF RRR 222W6
MS SALACOA NEW VISION 19C2
TJM THREE D 302A
MS DMR JETHRO 795Y2
CRC GUARDIAN 9U8U5
MS BRINKS NEW ERA 468P14

BW		WW		YW		REA		FT		IMF					
68 (87%)															
CED	BW	WW	YW	M	TM	CEM	SC	REA	IMF	FT	Hfr Prg	Stay	Cow Wt	TI	FI
8	-1.6	20	30	7	17	5.1	0.63	0.39	0.03	0.001	10.04	3.57	1.42		
15%	10%	45%	70%	70%	60%	10%	30%	20%	60%	45%	3%	5%	70%		

Lot 6A: Heifer Calf..

Big Town granddaughter with 9 EPDs in the top 35%!

8 BHF MISS SOGGY 541K2

Born: 3/2/22 R10509935 Gen: 1 PHN: 541K2

From Addison Brangus Farms

BWCC SOMETHING SOGGY 24E
R10383257

BWCC SOMETHING SOGGY 111A4

BWCC MS BRAND NAME 24B3

BWCC POTENTIAL 812A8

TE MS PURPOSE 541D3
UX10326142

LL MS NEW DIRECTION 541U3

MC SOMETHING SPECIAL 129W14
MC MS STRYKER 111U25
BWCC BRAND NAME 889Z48
BWCC MS REDEMPTION 24Z5
S A V POTENTIAL 0205
BWCC MS JETHRO 812W
MC NEW DIRECTION 000 M24
MC MS JOHN WAYNE 541P2

BW			WW			YW			REA			FT			IMF		
71 (98%)			634 (103%)			844 (101%)			11.49 (109%)			0.28 (188%)			2.02 (60%)		
CED	BW	WW	YW	M	TM	CEM	SC	REA	IMF	FT	Hfr Prq	Stay	Cow Wt	TI	FI		
6.9	0.1	17	44	16	25	4.46	1.01	0.54	0.02	0.033	9.26	3.57	8.27	2.08	4.84		
25%	45%	60%	35%	10%	20%	25%	10%	5%	65%	>95%	5%	5%	90%	35%	15%		

541K2 is a granddaughter of the good BWCC Something Soggy 111A4. She holds 14 EPD traits in the breed's top 45% or better, including top 5% REA and 10% Milk and SC. Ms Soggy is dragging a nice 23K bull calf. **AI'd to DMR Empire 795D12, 10323531 on 5/29/25. Pasture exposed to ABF Raindance 568L, 10543780 from 6/10/25 to 7/31/25.**

8A ABF EMPIRE 23K 541N

Born: 3/16/25 R10583278 Gen: 2 PHN: 541N

From Addison Brangus Farms

ABF EMPIRE 23K
R10504952

DMR EMPIRE 795D12

ABF MS SOMETHING SPECIAL 23F9

BWCC SOMETHING SOGGY 24E

BHF MISS SOGGY 541K2
R10509935

TE MS PURPOSE 541D3

TJM THREE D 302A
MS DMR JETHRO 795Y2
MC SOMETHING SPECIAL 129W14
ABF MS CSOKA 740Z13 23B2
BWCC SOMETHING SOGGY 111A4
BWCC MS BRAND NAME 24B3
BWCC POTENTIAL 812A8
LL MS NEW DIRECTION 541U3

BW		WW		YW		REA		FT		IMF					
80 (102%)															
CED	BW	WW	YW	M	TM	CEM	SC	REA	IMF	FT	Hfr Prq	Stay	Cow Wt	TI	FI
7.2	0	24	48	11	23	4.7	0.82	0.4	0.07	0.024	8.85	3.42	4.82	2.25	4.88
25%	50%	40%	35%	25%	30%	15%	25%	25%	55%	90%	10%	10%	80%	40%	15%

Lot 8A: Bull Calf.



SPRING THREE-IN-ONES

9

SEWELLS MS INVESTMENT 800K2

Born: 4/17/22 R10509619 Gen: 1 PHN: 800K2

From Sewell Cattle Co. Inc.

DMR INVESTMENT 535F40
R10386630

DMR EMPIRE 795D12

WAT MS BAXTER 535C

TJM THREE D 302A

CB MS RAMON 800C

TJM THREE D 302A
MS DMR JETHRO 795Y2
CB HOMBRE 132X7
MS RJ NEWT 535T
CB FINAL CUT 924X
OAKS MS PATTON 302X3
CB RAMON 415X27
R T R BLACKCAP ML 8000

CB MS THREE D 800E
UB10369088

BW		WW			YW		REA		FT			IMF			
74 (106%)		530 (91%)			710 (100%)		9.64 (100%)		0.26 (100%)			4.78 (100%)			
CED	BW	WW	YW	M	TM	CEM	SC	REA	IMF	FT	Hfr Prg	Stay	Cow Wt	TI	FI
5.9	0	22	45	2	13	2.9	0.69	0.22	-0.07	0.014	8.9	3.08	0.34	1.61	4.6
35%	45%	40%	35%	95%	80%	80%	25%	40%	90%	80%	10%	15%	60%	50%	20%

One of the deepest sided and soggiest made females that you'll find anywhere in the country, this Investment sired replacement female has brood cow written all over her. From the ground up, she's extra soft made and sound, moving with loads of volume and dimension and her calving ease genetics make her an easy one to mate to many of the big time power bulls of the breed today and the Visionary pregnancy that she carries in utero is sure to be a great one as well. **AI'd to DMR Visionary 468K65, 10505222 on 5/15/25. Pasture exposed to DMR Relentless 535K15, 10505247 from 5/28/25 to 7/12/25.**



Sewells Ms Investment 800K2

9A

SCC MS MASTERPIECE 800N

Born: 1/15/25 UB10590855 Gen: 1 PHN: 800N

From Sewell Cattle Co. Inc.

CB MASTERPIECE 2051F
UB10383790

SUHN'S TRAIL BOSS 30B3

A CROSS RITA A2051

DMR INVESTMENT 535F40

CB MS THREE D 800E

SUHN'S AUGUSTUS 416Y14
SUHN'S MISS PATTON 30X5
CONNEALY CONSENSUS 7229
J & J OT26 RITA 48T
DMR EMPIRE 795D12
WAT MS BAXTER 535C
TJM THREE D 302A
CB MS RAMON 800C

SEWELLS MS INVESTMENT 800K2
R10509619

BW		WW		YW		REA		FT		IMF					
73 (98%)															
CED	BW	WW	YW	M	TM	CEM	SC	REA	IMF	FT	Hfr Prg	Stay	Cow Wt	TI	FI
7.3	-1.2	32	56	5	21	3.7	1.44	0.5	0.27	0.024	10.55	3.58	5.45		
20%	15%	15%	15%	85%	35%	50%	1%	10%	15%	95%	2%	5%	85%		

Lot 9A: Heifer Calf.

When you evaluate this outstanding Masterpiece daughter from a genomic standpoint, she paints a really unique picture of balance and uniformity, and when we evaluate her from a phenotypic view, she's equally impressive with her square build and incredible amount of stoutness and dimension. Take this work of art home on sale day and, like her sire, she just might be your next "Masterpiece".



CB Masterpiece 2051F • Sire of Lot 9A

10

ABF MS BLACK ROCK 27L3

Born: 5/4/23 R10534196 Gen: 6 PHN: 27L3

From Hurricane Creek Brangus

ABF BLACK ROCK 27H5
R10458503

DMR EMPIRE 795D12

ABF MS SATIN 27E2

ABF MS ON TASK 27C1

SVF MS 607N2 275

TJM THREE D 302A
MS DMR JETHRO 795Y2
ABF SATIN 857B
ABF MS ON TASK 27C1
CADENCE OF BRINKS
SVF MS 23M28
SVF, R 607N2
MS 38 CENTER RANCH 27/N23

ABF MS ON TASK 27C1
R10289009

BW			WW			YW			REA		FT		IMF			
65 (88%)			486 (90%)			870 (97%)			10.01 (88%)		0.29 (115%)		3.11 (104%)			
CED	BW	WW	YW	M	TM	CEM	SC	REA	IMF	FT	Hfr	Prg	Stay	Cow Wt	TI	FI
7	-0.8	30	56	10	25	5.2	0.42	0.16	0.04	0.008	7.5	2.66	-1.44	2.5	4.48	
25%	25%	20%	15%	40%	20%	10%	50%	50%	55%	70%	15%	20%	50%	25%	25%	

Ms ABF Black Rock boasts 10 traits in the top 25% of the breed, including 20% CED and 15% for WW and YW. She has a heifer calf at her side, sired by QVF Big Town 19L, that looks to be a promising addition to any herd. Pasture exposed to ABF Cash Flow 23K7, 10514078 from 5/20/25 to 9/1/25.

10A

MISS HCB BIGTOWN 27N3

Born: 4/19/25 R10590056 Gen: 5 PHN: 27N3

From Hurricane Creek Brangus

QVF BIG TOWN 19L
R10524186

BWCC BIG TOWN 192B16

MS SALACOA STONEWALL 19E.

ABF BLACK ROCK 27H5

ABF MS ON TASK 27C1

MC NUFF SAID 889T50
BWCC MS REVELATION 192W8
STONEWALL OF RRR 222W6
MS SALACOA NEW VISION 19C2
DMR EMPIRE 795D12
ABF MS SATIN 27E2
ABF MS ON TASK 27C1
SVF MS 607N2 275

ABF MS BLACK ROCK 27L3
R10534196

COW DATA															
BW		WW		YW		REA		FT		IMF					
73 (99%)															
CED	BW	WW	YW	M	TM	CEM	SC	REA	IMF	FT	Hfr Prg	Stay	Cow Wt	TI	FI
8	-1.5	26	46	9	22	4.6	0.51	0.3	0.14	0.013	9.27	2.83	-5.16	2.46	4.64
15%	15%	25%	30%	50%	35%	20%	40%	30%	35%	80%	5%	20%	35%	25%	20%

Lot 10A: Heifer Calf.

SPRING PAIRS

12 QVF MS SHO TIME 30L5

Born: 1/31/23 R10538072 Gen: 2 PHN: 30L5 From Las Palomas Ranch

MC SHO TIME 313H30
R10475474

BWCC CENTER SECTION 7F7

RBM MS SPECIAL FORCES 313A

BWCC BIG TOWN 192B16

MS SALACOA ATLANTA 30G5

BWCC HOT SHOT 192D31
BWCC MS DOC 7D6
MC SPECIAL FORCES 924Y4
RBM MS RITE DIRECTION 313X3
MC NUFF SAID 889T50
BWCC MS REVELATION 192W8
ATLANTA OF SALACOA 488Z
MS SALACOA BRIGHTON 30E8

MS SALACOA BIG TOWN 30J15
R10475982

BW			WW			YW			REA			FT			IMF		
83 (100%)			537 (100%)			769 (100%)			10.01 (100%)			0.23 (100%)			4.25 (100%)		
CED	BW	WW	YW	M	TM	CEM	SC	REA	IMF	FT	Hfr	Prq	Stay	Cow	Wt	TI	FI
7.8	-0.7	46	75	9	32	3.21	0.33	0.68	0.39	0.029	11.91		2.72	-0.64		4.38	3.59
15%	25%	1%	2%	50%	4%	70%	60%	2%	10%	95%	1%		20%	55%		1%	55%

Sho Time daughter with 10 EPD traits in the breed's top 25% or better, including top 1% WW and 2% YW. She is dragging a bull calf sired by Accomplishment. He has 15 EPD traits in the breed's top 45% or better.

12A LP ACCOMPLISHMENT 30N2

Born: 4/23/25 UB10582417 Gen: 1 PHN: 30N2 From Las Palomas Ranch

WW ACCOMPLISHMENT 535J43
UB10495712

SITZ ACCOMPLISHMENT 720F

MS DMR CORONADO 535A8

MC SHO TIME 313H30

MS SALACOA BIG TOWN 30J15

POSS ACHIEVEMENT
SITZ BARBARAMERE NELL 166D
TJM CORONADO 535X
SVF MS 535M31
BWCC CENTER SECTION 7F7
RBM MS SPECIAL FORCES 313A
BWCC BIG TOWN 192B16
MS SALACOA ATLANTA 30G5

QVF MS SHO TIME 30L5
R10538072

BW		WW		YW		REA		FT		IMF					
86 (91%)															
CED	BW	WW	YW	M	TM	CEM	SC	REA	IMF	FT	Hfr Prg	Stay	Cow Wt	TI	FI
9	-1.9	36	61	9	27	2.88	0.26	0.56	0.32	0.032	8.23	2.66	-3.35	3.65	3.92
10%	10%	15%	15%	45%	15%	75%	75%	10%	20%	95%	10%	25%	40%	10%	45%

Lot 12A: Bull Calf.



QVF Ms Sho Time 30L5 & LP Accomplishment 30N2



LP Ms Justified 56J3 & LP Accomplishment 56N

13 LP MS JUSTIFIED 56J3

Born: 11/19/21 R10507929 Gen: 6 PHN: 56J3 From Las Palomas Ranch

DMR JUSTIFIED 30G82
R10422088

BWCC CROSS FIT 541B28

MS DMR CHAIRMAN 30C2

SUHN'S BUSINESS LINE 30D26

ESTRADA MS CSONKA 56A2

MC CROSSOVER 834Y
MC MS LUCIA 541U
DMR THE CHAIRMAN 415A11
SUHN'S MISS PATTON 30X6
VF-OAKS ONLINE 918Y3
SUHN'S MISS NORTH STAR 30A
CSONKA OF BRINKS 30R4
ESTRADA MS L11 56FMU

CLVR-ESTRADA MS BUSINESS LINE 56F4
R10426913

Detailed Performance Metrics																
BW			WW			YW		REA		FT		IMF				
88 (104%)			441 (84%)													
CED	BW	WW	YW	M	TM	CEM	SC	REA	IMF	FT	Hfr Prg	Stay	Cow Wt	TI	FI	
2.6	1.8	23	47	-3	8	3.19	1.07	0.35	0.23	-0.004	4.29	1.61	-1.21	2.3	3.38	
80%	90%	35%	30%	>95%	95%	70%	5%	20%	20%	30%	35%	55%	55%	30%	60%	

Justified daughter with 8 EPD traits in the breed's top 35% or better, including top 20% REA and IMF, 30% YW and 35% WW. Her calf at side is an Accomplishment son with 13 EPD traits, breed average or better.

13A LP ACCOMPLISHMENT 56N

Born: 4/27/25 UB10582758 Gen: 1 PHN: 56N From Las Palomas Ranch

WW ACCOMPLISHMENT 535J43
UB10495712

SITZ ACCOMPLISHMENT 720F

MS DMR CORONADO 535A8

DMR JUSTIFIED 30G82

CLVR-ESTRADA MS BUSINESS LINE 56F4

POSS ACHIEVEMENT
SITZ BARBARAMERE NELL 166D
TJM CORONADO 535X
SVF MS 535M31
BWCC CROSS FIT 541B28
MS DMR CHAIRMAN 30C2
SUHN'S BUSINESS LINE 30D26
ESTRADA MS CSONKA 56A2

LP MS JUSTIFIED 56J3
R10507929

Estimate of Economic Size															
BW		WW			YW			REA		FT		IMF			
97 (99%)															
CED	BW	WW	YW	M	TM	CEM	SC	REA	IMF	FT	Hfr Prg	Stay	Cow Wt	TI	FI
6.6	-0.6	25	47	2	15	2.87	0.63	0.4	0.23	0.015	4.34	2.09	-3.63	2.61	3.81
30%	35%	40%	40%	95%	75%	75%	35%	25%	25%	75%	40%	45%	35%	30%	50%

Lot 13A: Bull Calf.

SPRING PAIRS

14 LP MS CROSSROADS 99K4

Born: 2/16/22 R10507936 Gen: 6 PHN: 99K4 From Las Palomas Ranch

DMR CROSSROADS 795F7
R10416850

101 MS PATTON 99X9
R10195442

BWCC CROSS FIT 541B28

MS DMR CORONADO 795CS

PATTON OF BRINKS 30T22

MS BRINKS NIMITZ 99P52

MC CROSSOVER 834Y
MC MS LUCIA 541U
TJM CORONADO 535X
MS DMR JETHRO 795Y2
CSNKA OF BRINKS 30R4
MS BRINKS ALI 30P26
NIMITZ OF BRINKS 75L12
MS BRINKS ALI 99M39

BW		WW		YW		REA		FT		IMF					
100 (100%)		614 (100%)													
CED	BW	WW	YW	M	TM	CEM	SC	REA	IMF	FT	Hfr Prg	Stay	Cow Wt	TI	FI
1.1	1.6	22	43	0	11	2.89	0.52	0.14	0.23	0	2.18	0.58	-1.99	2.06	2.03
90%	85%	40%	40%	>95%	90%	80%	40%	55%	20%	45%	60%	90%	50%	35%	95%

Crossroads daughter with 7 EPD traits breed average or better, including top 40% WW and YW. At her side, she has a heifer calf sired by Accomplishment. She also has 7 EPD traits breed average or better.

14A LP MS ACCOMPLISHMENT 99N4

Born: 6/17/25 UB10590627 Gen: 1 PHN: 99N4 From Las Palomas Ranch

WW ACCOMPLISHMENT 535J43
UB10495712

LP MS CROSSROADS 99K4
R10507936

SITZ ACCOMPLISHMENT 720F

MS DMR CORONADO 535A8

DMR CROSSROADS 795F7

101 MS PATTON 99X9

POSS ACHIEVEMENT
SITZ BARBARAMERE NELL 166D
TJM CORONADO 535X
SVF MS 535M31
BWCC CROSS FIT 541B28
MS DMR CORONADO 795CS
PATTON OF BRINKS 30T22
MS BRINKS NIMITZ 99P52

BW		WW		YW		REA		FT		IMF					
80 (94%)															
CED	BW	WW	YW	M	TM	CEM	SC	REA	IMF	FT	Hfr Prg	Stay	Cow Wt	TI	FI
4.8	-0.2	26	47	5	18	2.7	0.36	0.3	0.24	0.017	3.29	1.58	-4.02		
55%	40%	25%	30%	85%	55%	85%	60%	30%	20%	85%	45%	55%	40%		

Lot 14A: Heifer Calf.



LP Ms Crossroads 99K4 & LP Ms Accomplishment 99N4



DS Ms Hot Shot 198L3 & LP Ms By Design 198N

15 DS MS HOT SHOT 198L3

Born: 2/27/23 R10524650 Gen: 1 PHN: 198L3 From Las Palomas Ranch

BWCC HOT SHOT 192D31
UB10349294

DS MS EMPIRE 198J
R10477450

BWCC SLICK 7B

BWCC MS STATEMENT 192B48

DMR EMPIRE 795D12

MS SALACOA N SURRENDER 198G

S A V CHILL FACTOR
BWCC MS FLIGHT DECK 7Z
BWCC STATEMENT 036Z
BWCC MS ELEGIDO 192Z50
TJM THREE D 302A
MS DMR JETHRO 795Y2
NEVER SURRENDER OF SALACOA 803D9
MS SALACOA WHISKEY 192B2

BW		WW			YW			REA		FT		IMF			
93 (100%)		632 (100%)			920 (100%)			10.57 (100%)		0.24 (100%)		3.90 (100%)			
CED	BW	WW	YW	M	TM	CEM	SC	REA	IMF	FT	Hfr Prg	Stay	Cow Wt	TI	FI
5.2	0.9	38	67	2	22	5.21	0.68	0.43	0.13	0.019	10.32	3.49	6.52	3.07	4.65
50%	70%	5%	4%	95%	35%	10%	25%	15%	35%	90%	3%	10%	90%	10%	20%

Hot Shot daughter with 13 EPD traits in the breed's top 35% or better, including top 4% YW, 5% WW and 15% REA. By Design heifer calf at side with 14 EPD traits in the breed's top 40%.

15A LP MS BY DESIGN 198N

Born: 3/26/25 R10582412 Gen: 1 PHN: 198N From Las Palomas Ranch

BY DESIGN OF SALACOA 406F10
UB10396325

DS MS HOT SHOT 198L3
R10524650

HOLLYWOOD OF SALACOA 23A53

TTR A5051 U0286 X6200

BWCC HOT SHOT 192D31

DS MS EMPIRE 198J

NEW VISION OF SALACOA 209Y2
MS SVF PATTON 23Y66
THREE TREES DOUBLE DESIGN
TTR X6200 317R3 406M4
BWCC CENTER SECTION 7F7
RBM MS SPECIAL FORCES 313A
BWCC BIG TOWN 192B16
MS SALACOA ATLANTA 30GS

BW		WW		YW		REA		FT		IMF					
86 (106%)															
CED	BW	WW	YW	M	TM	CEM	SC	REA	IMF	FT	Hfr Prg	Stay	Cow Wt	TI	FI
5.9	-0.4	30	62	2	17	3.61	1.27	0.58	0.31	0.024	8.8	3.57	-3.84	3.49	5.41
35%	35%	20%	10%	95%	60%	55%	2%	4%	15%	95%	10%	5%	40%	10%	10%

Lot 15A: Heifer Calf.

SPRING PAIRS

17 GWCC MISS EMPOWER 7139L4

Born: 3/31/23 UB10537821 Gen: 1 PHN: 7139L4 From Las Palomas Ranch

QVF PR EMPOWER 30G16
R10412716

CB MS THREE D 7139E43
UB10383758

NEVER SURRENDER OF SALACOA 803D9
MC BOULDER 889Z14
MS BRINKS LOMBARDI 803S25
T3 MS THREE D 30D
TJM THREE D 302A
MS SALACOA ATLANTA 30B5
TJM THREE D 302A
MS SOUTHERN REAL DEAL 468W36
CB THREE D 468C8
E&B 1680 PRECISION 1023
EF EVER ENTENSE 7139
SOUTHERN EVER ENTENSE 091

BW			WW			YW			REA		FT		IMF		
82 (100%)			572 (100%)			929 (100%)			10.73 (100%)		0.24 (100%)		4.56 (100%)		
CED	BW	WW	YW	M	TM	CEM	SC	REA	IMF	FT	Hfr Prq	Stay	Cow Wt	TI	FI
3.2	1.7	45	85	5	28	3.6	0.6	0.67	0.19	0.025	8.08	3.19	5.78	4.04	4.36
75%	90%	1%	1%	85%	10%	55%	35%	2%	25%	95%	10%	10%	85%	2%	30%

Empower daughter with 12 EPD traits in the breed's top 35% or better, including top 1% WW and YW and top 2% REA. She is dragging an Accomplishment heifer calf with 13 EPD traits in the breed's top 30%.

17A LP ACCOMPLISHMENT 7139N

Born: 4/28/25 UB10582418 Gen: 2 PHN: 7139N From Las Palomas Ranch

WW ACCOMPLISHMENT 535J43
UB10495712

GWCC MISS EMPOWER 7139L4
UB10537821

SITZ ACCOMPLISHMENT 720F
MS DMR CORONADO 535A8

QVF PR EMPOWER 30G16

CB MS THREE D 7139E43

POSS ACHIEVEMENT
SITZ BARBARAMERE NELL 166D
TJM CORONADO 535X
SVF MS 535M31
NEVER SURRENDER OF SALACOA 803D9
T3 MS THREE D 30D
CB THREE D 468C8
EF EVER ENTENSE 7139

BW		WW		YW		REA		FT		IMF					
79 (96%)															
CED	BW	WW	YW	M	TM	CEM	SC	REA	IMF	FT	Hfr Prg	Stay	Cow Wt	TI	FI
6.8	-0.5	36	66	7	25	3.07	0.39	0.56	0.22	0.03	6.25	2.88	-0.13	3.48	4.3
25%	30%	10%	5%	70%	20%	70%	55%	4%	20%	>95%	20%	15%	60%	10%	30%

Lot 17A: Heifer Calf.



GWCC Miss Empower 7139L4 & LP Accomplishment 7139M



Medina of Brinks 504519 • Sire of Lot 18

18 BBI MEDINA LADY 483G

Born: 9/10/19 R10436142 Gen: 6 PHN: 483G From Ace of Spades Cattle Co.

MEDINA OF BRINKS 504519
R10046409

QCB MS 483X
R10157196

DITKA OF BRINKS 535N37
MS BRINKS BACKSIDE 504P2
TCB CATAWBA WARRIOR R532
CCC MS 613 DUCHESS
SONAR OF BRINKS 607L18
MISS BRINKS GERONIMO 535K14
BACKSIDE OF BRINKS 14K5
MS BB SPECIAL ADDITION 504H6
SR CADENCE WARRIOR H823
SR WARRIOR PRINCESS N332
CCC 1144 DUKE 613L
CCC MS BRIGHT PROMISE 483L7

CROSSBRED PROFILES															
BW		WW			YW			REA		FT		IMF			
76 (103%)		582 (102%)			889 (100%)			8.05 (100%)		0.40 (100%)		1.34 (100%)			
CED	BW	WW	YW	M	TM	CEM	SC	REA	IMF	FT	Hfr Prq	Stay	Cow Wt	TI	FI
5	-0.2	20	37	12	23	2.76	0.65	0.36	-0.2	0.007	-2.47	0.96	-6.94	1.2	3.42
50%	40%	45%	55%	25%	30%	80%	30%	20%	95%	65%	95%	80%	25%	70%	60%

A feminine, maternally focused female sired by the legendary Medina of Brinks 504519, a sire known for producing long-lasting, functional daughters with exceptional udder quality and fleshing ability. Her dam, QCB 483X, is a proven, productive cow with a strong maternal track record, adding consistency and cow sense to this pedigree. 483G is deep-bodied, structurally sound, and built with the kind of balance and practicality that works in any program. **Pasture exposed to GJR Atlanta 311L10, 10552131 from 7/31/25 to 8/27/25.** A true brood cow in the making, backed by time-tested genetics and mated to one of the most exciting young sires in the breed.

18A TJB MS INNOVATION N620

Born: 5/17/25 R10582735 Gen: 1 PHN: N620 From Ace of Spades Cattle Co.

DMR INNOVATION 331K22
UB10531500

BBI MEDINA LADY 483G
R10436142

SUHN'S INNOVATION 919E8
MS DMR STRATEGY 331E158

MEDINA OF BRINKS 504519

QCB MS 483X

MAR INNOVATION 251
SUHN'S MISS NEXT STEP 919Y26
DMR STRATEGY 263C6
MS DMR CONVERSION 331B2
DITKA OF BRINKS 535N37
MS BRINKS BACKSIDE 504P2
TCB CATAWBA WARRIOR R532
CCC MS 613 DUCHESS

BW		WW		YW		REA		FT		IMF					
63 (100%)															
CED	BW	WW	YW	M	TM	CEM	SC	REA	IMF	FT	Hfr Prq	Stay	Cow Wt	TI	FI
6.8	-0.8	19	38	11	21	3.01	0.81	0.27	-0.03	0.008	1.58	1.92	-4.36	1.63	4.26
25%	25%	50%	50%	30%	35%	75%	20%	35%	80%	70%	65%	45%	35%	50%	35%

Lot 18A: Heifer Calf.

Sired by DMR Innovation 331K22, one of the breed's most exciting young performance sires, this heifer calf combines elite growth potential with eye-catching design and maternal backing. She is the kind of replacement female that moves a herd forward.

FALL BRED COWS

21 KING'S MISS SILVERADO 85F5

Born: 11/14/18 UB10404045 Gen:1 PHN: 85F5

From 35 Cattle Farms

BWCC SILVERADO 889D
UB10336200

S A V REAL MASSIVE 4879

BWCC MS CROSSOVER 889B12

QCB 280X

QCB MS 85X

S A V RESOURCE 1441
S A V EMBLYNETTE 7545
MC CROSSOVER 834Y
BWCC MS REDEMPTION 889Z2
TCB CATAWBA WARRIOR R532
FLC MS CATWALK 280/K4
TCB CATAWBA WARRIOR R532
MF MISS 125F 85J5

BW		WW			YW			REA		FT		IMF			
75 (100%)		488 (100%)			734 (100%)										
CED	BW	WW	YW	M	TM	CEM	SC	REA	IMF	FT	Hfr Prq	Stay	Cow Wt	TI	FI
-0.1	2.8	41	70	12	32	3.86	0.74	0.49	0.18	0.018	4.38	2.47	0.22	3.31	4.32
95%	>95%	3%	3%	25%	4%	45%	20%	10%	25%	85%	35%	25%	60%	10%	30%

This 6-year-old UB2 boasts 11 traits in the top 35%. With weaning and yearling weight EPDs in the top 3%, she can give your herd the growth potential you're looking for. She just weaned a bull calf at 814 lbs (815 lbs adjusted). Pasture exposed to TTT Cash Flow 415K129, UB10526595 from 2/15/25 to 5/15/25. Confirmed bred on 4/26/25. ECD: 11/22/25.



King's Miss Silverado 85F5

22 KING'S MISS SILVERADO 85H3

Born: 2/21/20 UB10436089 Gen:2 PHN: 85H3

From 35 Cattle Farms

BWCC SILVERADO 889D
UB10336200

S A V REAL MASSIVE 4879

BWCC MS CROSSOVER 889B12

MF CONEUEH OF KING 55B6

KING'S MISS MELLIE 85C3

S A V RESOURCE 1441
S A V EMBLYNETTE 7545
MC CROSSOVER 834Y
BWCC MS REDEMPTION 889Z2
PATTON OF BRINKS 30T22
GT DDD MISS XANDI 55X
MCCREARY'S SWEET HOME 30Y5
QCB MS DONNA 85Z

BW		WW		YW		REA		FT		IMF					
90 (121%)															
CED	BW	WW	YW	M	TM	CEM	SC	REA	IMF	FT	Hfr Prq	Stay	Cow Wt	TI	FI
-4.8	4.1	40	67	9	30	1.86	0.81	0.46	0.22	0.015	5.51	2.38	-3.32	3.13	4.3
>95%	>95%	3%	4%	50%	10%	95%	20%	10%	20%	80%	25%	30%	40%	10%	30%

Palpated safe to Triple Crown, we expect a calf by her side by sale day. She's a 5-year-old UB2 carrying 10 traits in the top 30% of the breed. A'd to Suh'n's Triple Crown 416J39, UB10490384 on 12/3/2024. Pasture exposed to TTT Cash Flow 415K129, UB10526595 from 12/11/24 to 2/1/25.



King's Miss Silverado 85H3

23 WF MOONSHINE 152

Born: 9/30/20 UB10484096 Gen:3 PHN: MS WF H152

From Staggs Farms

SKYHAWKS MOONSHINE 895E
UB10360536

G5 FARMS MOONSHINE 7Z

SKYHAWKS MS BRUSHPOPPER 895B

MR.LOF 204

MS L.O.F.306H

SKYHAWKS PRESIDENTE
4R BOBBI SUE 7W
MOHNN BRUSHPOPPER 295
BLT MS SUMMIT 895S
DDD BLACK GOLD 804S25
SVF FIRST SIDE 23 T713
SVF MR WARRIOR 820Y2
MS. L.O.F. 223

BW		WW		YW		REA		FT		IMF					
84 (97%)		541 (103%)													
CED	BW	WW	YW	M	TM	CEM	SC	REA	IMF	FT	Hfr Prg	Stay	Cow Wt	TI	FI
5.3	-0.4	24	42	8	20	4.93	0.38	0.24	0.09	0.003	1.89	1.77	-1.63	2.04	3.82
45%	35%	35%	40%	60%	45%	15%	55%	35%	45%	55%	65%	50%	50%	35%	45%

Nice, gentle UB cow in her prime. Natural service to Mr WF J154 (sire MC Something Special 889Y12). Confirmed vet checked by ultrasound 2 months bred on 5/30/25. 14 EPD traits breed average or better. TCB Catawba Warrior R532, DDD Black Gold 804S25 and Skyhawks Presidente in her pedigree. Pasture exposed to Mr WF J154, R10505752 from 12/12/24 to 4/1/25.

24 WF MOONSHINE 153

Born: 9/30/20 UB10484097 Gen:3 PHN: MS WF H153

From Staggs Farms

SKYHAWKS MOONSHINE 895E
UB10360536

G5 FARMS MOONSHINE 7Z

SKYHAWKS MS BRUSHPOPPER 895B

CB TRADITION 63A

CNF MS UB GEORGIA GAL 127C7

SKYHAWKS PRESIDENTE
4R BOBBI SUE 7W
MOHNN BRUSHPOPPER 295
BLT MS SUMMIT 895S
CB HOMBRE 541T3
CB CADENCE 63R
BRINKS ROBERTSON 406U5
CNF MISS UB GEORGIA GAL 127U3

BW		WW		YW		REA		FT		IMF					
79 (91%)		515 (98%)													
CED	BW	WW	YW	M	TM	CEM	SC	REA	IMF	FT	Hfr Prg	Stay	Cow Wt	TI	FI
5.4	-0.7	23	40	8	19	4.23	0.51	0.15	0.12	0.003	6.24	3	-5.97	1.97	5.42
45%	25%	35%	45%	60%	50%	30%	40%	50%	35%	55%	20%	15%	30%	40%	10%

Nice, gentle UB cow in her prime. Natural service to MR WF J154 (sire MC Something Special 889Y12). Confirmed vet checked by ultrasound 3.5 months bred on 5/30/25. 15 EPD traits breed average or better. Bright Side of Brinks 789G5B and Skyhawks Presidente in her pedigree. Pasture exposed to Mr WF J154, R10505752 from 12/12/24 to 4/1/25.

FAIL BRED COWS

25 SF MISS FINAL CUT 157K

Born: 12/2/22 R10556881 Gen:1 PHN: 39K

From Staggs Farms

MR WF H134 EVON
UB10473712

WF MOONSHINE 150
R10484098

ELC MR FINAL CUT 54F

MS L.O.F. 303H

SKYHAWKS MOONSHINE 895E

MISS LOF TRADEMARK 342

CB FINAL CUT 924X

ELC MS REAL DEAL 54Z

SVF MR WARRIOR 820Y2

MS L.O.F. 224

G5 FARMS MOONSHINE 7Z

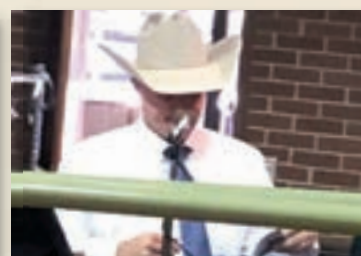
SKYHAWKS MS BRUSHPOPPER 895B

MC TRADEMARK 30X3

MS L.O.F. 301

IMF 2023-24															
BW		WW			YW			REA		FT		IMF			
CED	BW	WW	YW	M	TM	CEM	SC	REA	IMF	FT	Hfr Prq	Stay	Cow Wt	TI	FI
3.9	-0.1	17	40	10	19	3.91	0.25	0.27	0.11	0.004	3.43	2.03	2.14	2.01	3.86
65%	40%	60%	45%	40%	50%	40%	70%	35%	40%	55%	45%	40%	70%	35%	45%

Nice, large framed heifer with Final Cut, MC Trademark and Skyhawks Presidente (R10025207) in her pedigree. Natural service to Mr WF J154 (sire MC Something Special 889Y12). 13 EPD traits breed average or better. Confirmed by vet 4 months bred by ultrasound on 5/30/25. Could possibly calve before sale date. **Pasture exposed to Mr WF J154, R10505752 from 12/12/24 to 4/1/25.**



26 CLVR MS HUASTECO 302E12

Born: 10/5/17 R10367736 Gen:5 PHN: 302E12

From Las Palomas Ranch

CLVR-TJM HUASTECO 535A
R10253250

CLVR MS NEW VISION 302B16
R10276311

CB FINAL CUT 924X

SF MS NEWSMAN 535R3

NEW VISION OF SALACOA 209Y2

MS DMR LTD 302Y6

MC REVELATION 129T

RBM MS GUNS 924T3

MC NEWS MAN 81H13

SF MISS ANGELO 535M2

LAMBERT OF BRINKS 317R3

MS BRINKS BRIGHT SIDE 209L11

LTD OF BRINKS 415T28

MS DMR NEXT STEP 302W5

BW		WW		YW		REA		FT		IMF					
72 (94%)		434 (80%)		959 (90%)		10.97 (100%)		0.24 (100%)		4.19 (100%)					
CED	BW	WW	YW	M	TM	CEM	SC	REA	IMF	FT	Hfr Prq	Stay	Cow Wt	TI	FI
7.9	-1.9	13	39	16	22	2.89	0.16	0.41	0.1	0.002	2.86	1.34	-11.18	2.27	3.75
15%	10%	75%	50%	10%	35%	80%	80%	15%	40%	50%	50%	65%	15%	30%	50%

Huasteco daughter with 12 EPD traits breed average or better, including top 10% BW and Milk and 15% CED and REA.



CLVR Ms Huasteco 302E12

27 RBF MS STONEWALL 302J

Born: 6/15/21 R10497038 Gen:4 PHN: 302J

From River Bend Farms

PR STONEWALL 129G4
R10410328

CLVR MS CSOKA 302B35
R10294246

STONEWALL OF RRR 222W6

MB MS YELLOWSTONE 129B6

CSOKA OF BRINKS 30R4

MS BRINKS NEXT STEP 302U2

CSOKA OF BRINKS 30R4

MS BRINKS LOMBARDI 222S20

MB YELLOWSTONE 17Y2

MB MS INFOCUS 129X12

LEAD GUN OF BRINKS 222K14

MISS BRINKS UPPERCUT 30L18

SUHN'S NEXT STEP 331R7

MISS JAK LEAD TIME 302N2

BW		WW		YW		REA		FT		IMF					
64 (100%)															
CED	BW	WW	YW	M	TM	CEM	SC	REA	IMF	FT	Hfr Prq	Stay	Cow Wt	TI	FI
4.9	0.7	18	44	9	18	3.82	0.82	0.48	0.14	0.005	6.28	3.04	2.8	2.28	5.06
55%	65%	55%	35%	50%	55%	45%	15%	10%	35%	60%	20%	15%	75%	30%	15%

She is sired by our good Stonewall son out of the best modern-day first-generation flushes of the 129K4 donor and Mytty In Focus. She is out of one of the best Csonka daughters to ever eat grass at Clover Ranch. She is extreme only in her balanced genomic profile, with added rib shape and fertility bred in. Don't miss this lot from River Bend! **Pasture exposed to VF Blue Chip 468L54, R10536877 from 12/9/24 to 2/3/25. Pasture exposed to BWCC Black Top 192G22, R10444674 from 2/4/25 to 3/17/25. Confirmed pregnant.**

28 BHF MISS BIG TOWN 386J

Born: 2/8/21 R10480857 Gen:4 PHN: 386J

From Cedar Junction Brangus

BWCC BIG TOWN 192B16
R10266676

TE MS CRUISE 386C
R10296166

MC NUFF SAID 889T50

BWCC MS REVELATION 192W8

BWCC CRUISE 889Z28

MS IRON FARM 430R4 386W

MC JOHN WAYNE 165N3
MC MS EXTRAVAGANT 889P4
MC REVELATION 129T
MISS 4C LEAD GUN 192P4
MC ELEGIDO 924W6
BWCC MS LEAD GUN 889W26
IRON FARM 789G5-430R4
MS IRON FARM 44G-386P

BW		WW		YW		REA		FT		IMF					
66 (92%)		588 (96%)		640 (85%)		8.99 (88%)		0.3 (80%)		2.41 (80%)					
CED	BW	WW	YW	M	TM	CEM	SC	REA	IMF	FT	Hfr Prq	Stay	Cow Wt	TI	FI
9.4	-1.7	17	29	8	17	4.41	0.1	0.32	0.01	0.015	8.39	2.89	-1.86	1.4	4.48
10%	10%	60%	70%	60%	60%	25%	85%	25%	65%	80%	10%	15%	50%	60%	25%

Cedar Junction Brangus is offering this lot bred back to Empire 795D12. We retained a heifer that is this same cross. She boasts 7 traits in the top 25%, 3 of these in the top 10% including calving ease, birth weight, and heifer pregnancy. Easy keeper and very docile. She has had plenty of time to earn her keep! **AI'd to DMR Empire 795D12, 10323531 on 12/18/24.**

FAIL BRED COWS

29 CLVR MS TRIBUTE 416E2

Born: 4/22/17 R10354518 Gen:7 PHN: 416E2 From Las Palomas Ranch

DMR TRIBUTE 415Z46
R10216858

CSOKA OF BRINKS 30R4

MS BRINKS BRIGHT SIDE 415R23

NEW VISION OF SALACOA 209Y2

SUHN'S MISS ALI 416M12

LEAD GUN OF BRINKS 222K14
MISS BRINKS UPPERCUT 30L18
BRINKS BRIGHT SIDE 607L11
MISS BRINKS VAQUERO 415G
LAMBERT OF BRINKS 317R3
MS BRINKS BRIGHT SIDE 209L11
ALI OF BRINKS 209J2
MISS CC NEWS DAY 416E

BW			WW			YW			REA		FT		IMF			
80 (110%)			505 (91%)			862 (94%)			10.07 (95%)		0.27 (80%)		3.92 (95%)			
CED	BW	WW	YW	M	TM	CEM	SC	REA	IMF	FT	Hfr	Prg	Stay	Cow Wt	TI	FI
5.2	1	14	34	3	11	3.73	1.05	0.11	0.03	-0.007	3.99	1.11	-15.1	1.32	3.64	
50%	75%	70%	60%	95%	90%	50%	10%	60%	60%	20%	40%	75%	5%	65%	50%	

Tribute daughter with 7 EPD traits breed average or better, including top 10% SC and 20% FAT.



CLVR Ms Tribute 416E2

30 ELC MS BEACON 535H10

Born: 12/31/20 R10465495 Gen:2 PHN: 535H10 From 3S Cattle Farms

ELC MR BEACON 96F5
R10392422

SUHN'S MAJESTIK BEACON 30C

ELC MS HOMBRE 96A4

CB PASSPORT 803Y11

CLVR MISS COCO 535W2

TJM THREE D 302A
SCC MISS MYTTY 30Z5
CB HOMBRE 541T3
MS SVF 23586 96Y4
CB HOMBRE 541T3
MS BRINKS LAMBERT 803T6
SVF MR 4457
SVF MS 171P4 535S60

BW			WW			YW			REA		FT		IMF			
69 (98%)			567 (102%)			864 (100%)			9.36 (100%)		0.22 (100%)		3.75 (100%)			
CED	BW	WW	YW	M	TM	CEM	SC	REA	IMF	FT	Hfr	Prg	Stay	Cow Wt	TI	FI
5.5	0.1	20	45	4	14	2.91	0.77	-0.01	0.08	0.003	5.91	2.29	0.63	1.85	4.04	
45%	45%	45%	35%	90%	75%	75%	20%	80%	45%	55%	20%	30%	65%	45%	40%	

She's a well-balanced Beacon daughter, purchased at this sale in 2022 as a bred heifer. She's performed well for the South family and will do the same for you. Pasture exposed to TTT Cash Flow 415K129, UB10526595 from 2/15/25 to 5/15/25. Confirmed bred on 4/26/25. ECD: 11/22/25.



ELC Ms Beacon 535H10

SPRING BRED COW

33 KING'S MISS SILVERADO 85G2

Born: 11/9/19 UB10436065 Gen:2 PHN: 85G2 From 3S Cattle Farms

BWCC SILVERADO 889D
UB10336200

S A V REAL MASSIVE 4879

BWCC MS CROSSOVER 889B12

QCB 280X

QCB MS 85X

S A V RESOURCE 1441
S A V EMBLYNETTE 7545
MC CROSSOVER 834Y
BWCC MS REDEMPTION 889Z2
TCB CATAWBA WARRIOR R532
FLC MS CATWALK 280/K4
TCB CATAWBA WARRIOR R532
MF MISS 125F 85J5

IMF MISS 1251 8335																
BW		WW			YW			REA		FT		IMF				
79 (106%)		604 (104%)			874 (103%)											
CED	BW	WW	YW	M	TM	CEM	SC	REA	IMF	FT	Hfr	Prg	Stay	Cow Wt	TI	FI
2.9	1	32	58	11	27	3.87	0.59	0.45	0.11	0.011	3.65	2.1	0.38	2.76	3.96	
80%	75%	15%	15%	30%	15%	45%	35%	10%	40%	75%	45%	40%	60%	20%	40%	

This UB2 has weaned dandy bull calves two years in a row. She has good growth and maternal EPDs, and is a prime example of why the South family has enjoyed the 85-cow family in their herd. Pasture exposed to TTT Cash Flow 415K129, UB10526595 from 2/15/25 to 5/15/25 and to G+ Alliance 160L9, UB1051175 from 5/15/25 to 6/21/25. Confirmed bred on 6/21/25. ECD: 2/11/26.



King's Miss Silverado 85G2

SPRING BRED COWS

34 B2K MS CROSSROADS 302J6

Born: 8/26/21 R10501522 Gen: 6 PHN: 302J6

From Addison Brangus Farms

DMR CROSSROADS 795F7
R10416850

BWCC CROSS FIT 541B28

MS DMR CORONADO 795C5

DMR ROLL TIDE 222Z29

MS DMR 607L11 302W11

MC CROSSOVER 834Y

MC MS LUCIA 541U

TJM CORONADO 535X

MS DMR JETHRO 795Y2

DMR AFFIRMED 331U24

MS BRINKS BS 607L11 222S3

BRINKS BRIGHT SIDE 607L11

MISS JAK LEAD TIME 302N2

MS DMR ROLL TIDE 302C5
R10296862

IMF WEEKEND TIME SCHEDULE															
BW		WW			YW		REA		FT			IMF			
72 (100%)		588 (100%)			824 (100%)										
CED	BW	WW	YW	M	TM	CEM	SC	REA	IMF	FT	Hfr Prg	Stay	Cow Wt	TI	FI
2.2	2.2	28	56	3	18	3.82	0.45	0.31	0.08	-0.004	2.85	1.05	-7.43	2.39	3.1
85%	95%	20%	15%	95%	55%	45%	50%	25%	45%	30%	50%	75%	25%	25%	70%

302J6 is a fancy Crossroads daughter out of Ms DMR Roll Tide. Ms Crossroads has 10 EPD traits with breed average or better, including top 15% YW, 20% WW and 25% REA. AI'd to DMR Kingdom 535G45, 10434685 on 5/29/25. Pasture exposed to ABF Raindance 568L, 10543780 from 6/10/25 to 7/31/25.



B2K Ms Crossroads 302J6

35 JRT MS NEW VISION 468H

Born: 2/8/20 R10441690 Gen: 4 PHN: 468H

From Addison Brangus Farms

NEW VISION OF SALACOA 209Y2
R10204856

LAMBERT OF BRINKS 317R3

MS BRINKS BRIGHT SIDE 209L11

PATTON OF BRINKS 30T22

MS BRINKS BEAR BRYANT 468T64

LEAD GUN OF BRINKS 222K14

MS BRINKS GOOD FORTUNE 317M

BRIGHT SIDE OF BRINKS 789G5

MISS BRINKS NEWSDAY 209G9

CSONKA OF BRINKS 30R4

MS BRINKS ALI 30P26

BEAR BRYANT OF BRINKS 1000N6

MISS BRINKS LEAD TIME 468L

MS DMR PATTON 468X6
R10186395

WISSARD 2012 FINE TUNE															
BW		WW				YW		REA		FT		IMF			
62 (100%)		536 (100%)				780 (100%)		10.83 (100%)		0.11 (100%)		1.81 (100%)			
CED	BW	WW	YW	M	TM	CEM	SC	REA	IMF	FT	Hfr Prg	Stay	Cow Wt	TI	FI
5.8	0	8	22	2	7	1.7	0.01	0.42	-0.17	-0.018	4.87	1.28	-20.78	0.6	4.11
40%	45%	90%	85%	95%	95%	95%	90%	15%	>95%	2%	30%	70%	2%	90%	35%

468H is a New Vision daughter out of Ms DMR Patton. She has 7 EPD traits in the breed's top 45% or better, including top 15% REA. AI'd to TTT JRT Payback 541J34, 10497456 on 6/5/25. Pasture exposed to ABF Raindance 568L, 10543780 from 6/15/25 to 7/31/25.



JRT Ms New Vision 468H

36 KING'S MISS SILVERADO 543G2

Born: 11/15/19 UB10436070 Gen: 2 PHN: 543G2

From 3S Cattle Farms

BWCC SILVERADO 889D
UB10336200

S A V REAL MASSIVE 4879

BWCC MS CROSSOVER 889B12

I H RUDDER 504Y2

MF MISS TERRELL 543Z5

S A V RESOURCE 1441

S A V EMBLYNETTE 7545

MC CROSSOVER 834Y

BWCC MS REDEMPTION 889Z2

CHIEF OF INDIAN HILLS 23P68

MS BRINKS ALI 504P12

TERRELL OF BRINKS 87S3

MF MISS BRIGHT SIDE 543N

KING'S MISS JP 543C
R10313160

BW		WW			YW			REA		FT		IMF			
57 (77%)		536 (92%)			762 (90%)										
CED	BW	WW	YW	M	TM	CEM	SC	REA	IMF	FT	Hfr Prg	Stay	Cow Wt	TI	FI
5.6	-0.5	22	49	5	16	4.46	0.91	0.39	0.23	0.02	4.67	2.11	-1.39	2.69	3.68
40%	30%	40%	25%	85%	65%	25%	10%	20%	20%	90%	30%	40%	55%	20%	50%

A UB2 that carries a well-balanced EPD set with 11 top 35% traits, this cow can provide you with consistency every calving season. She just weaned twin bull calves averaging 500 lbs each. Pasture exposed to TTT Cash Flow 415K129, UB10526595 from 2/15/25 to 5/15/25 and to G+ Alliance 160L9, UB1051175 from 5/15/25 to 6/21/25. Confirmed bred on 6/21/25. ECD: 2/1/26.



King's Miss Silverado 543G2

FALL BRED HEIFERS

40 VF MS TOP SHELF 000L46

Born: 10/27/23 R10554265 Gen: 1 PHN: 000L46 From Vanna Farms

BWCC TOP SHELF 468H82
R10457860

BWCC MONUMENT 10D7

MC BOULDER 889214

BWCC MS STATEMENT 468B32

BWCC MS RESOURCE 10A10

BWCC ROCK SOLID 111D

BWCC STATEMENT 036Z

BWCC MS ROCK STAR 468Y14

S A V ROCK SOLID 2251

BWCC MS RIGHTEOUS 111A12

MC GAME CHANGER 127Y42

MC MS QUIET LADY 000S50

VF MS ROCK SOLID 000F28
UB10408841

VF MS GAME CHANGER 000B4

BW			WW			YW			REA			FT			IMF		
71 (100%)			647 (100%)			756 (100%)			8.79 (100%)			0.31 (100%)			4.05 (100%)		
CED	BW	WW	YW	M	TM	CEM	SC	REA	IMF	FT	Hfr	Prq	Stay	Cow Wt	TI	FI	
3.8	0.8	32	58	6	22	4.17	0.97	0.47	0.16	0.046	9.04	3.14	0.73	2.75	4.08		
70%	70%	15%	15%	80%	35%	35%	10%	10%	30%	>95%	5%	10%	65%	20%	35%		

Sired by BWCC Top Shelf 468H82 and out of the infamous BWCC Ms Statement 468B32, a donor known for producing breed-leading sires, this female carries elite genetics on both sides. Her maternal line traces back to VF Ms Solid Rock 000F28, a daughter of VF Ms Game Changer 000B4 and MC Ms Quiet Lady 000S50, adding even more depth, volume, and maternal strength. This powerful female combines performance, pedigree, and phenotype, with a bold rib shape, stout structure, and eye appeal and posting six traits ranked in the top 15 percent of the breed. AI bred to MC Hammer Time 129L10 on 12/24/25 and confirmed 7 months bred on 8/6/25 — a mating that brings together two of the breed's most exciting young sires for added muscle and growth. AI'd to MC Hammer Time 129L10, UB10539114 on 12/24/24. Pasture exposed to VF Blue Chip 468L54, R10536877 from 1/1/25 to 3/24/25.



MC Ms Quiet Lady 000S50

41 VF MS SHO BOAT 468L60

Born: 9/13/23 R10554270 Gen: 1 PHN: 468L60 From Vanna Farms

MC SHO BOAT 313H18
R10475462

BWCC CENTER SECTION 7F7

BWCC HOT SHOT 192D31

RBM MS SPECIAL FORCES 313A

BWCC MS DOC 7D6

MC SPECIAL FORCES 924Y4

BWCC OVERLOAD 403A

RBM MS RITE DIRECTION 313X3

S A V RESOURCE 1441

BWCC MS ELEGIDO 403Y

MC SOMETHING SPECIAL 129W14

MISS BRINKS CADENCE 468G15

BWCC MS OVERLOAD 468D22
UB10336046

BWCC SHE'S SPECIAL 468Y18

BW		WW		YW		REA		FT		IMF					
66 (100%)		591 (100%)		587 (100%)		7.57 (100%)		0.21 (100%)		5.96 (100%)					
CED	BW	WW	YW	M	TM	CEM	SC	REA	IMF	FT	Hfr Prq	Stay	Cow Wt	TI	FI
9.6	-1.5	35	61	15	33	5.41	1.3	0.45	0.44	0.036	10.89	3.51	6.43	3.87	4.65
5%	15%	10%	10%	10%	3%	10%	2%	10%	5%	>95%	2%	5%	90%	3%	20%

Sired by the eye-catching MC Sho Boat 313H18, a full sibling to MC Sho Time 313H30 and a standout son of the elite 313A matriarch owned by Genetic Partners, and out of the powerful BWCC Ms Overload 468D22, this female is stacked with proven genetics. The 468 cow family consistently produces females with balance, fertility, and structural integrity—and 468L60 follows suit. Feminine in her build, deep-sided, and bold in her design, she offers both style and maternal strength. Even more impressive, she ranks in the top 5% of the breed in four key traits and in the top 10% for twelve total traits, making her a performance outlier with real-world value. AI bred to MC Hammer Time 129L10, a carcass-driven young sire with elite marbling and ribeye genetics, backed by the powerful 129 cow family. Confirmed 7 months bred on 8/6/25, Hammer Time offers growth, look, and maternal consistency—the kind of sire that adds both value and versatility. AI'd to MC Hammer Time 129L10, UB10539114 on 12/24/24. Pasture exposed to VF Blue Chip 468L54, R10536877 from 1/1/25 to 3/24/25.



BWCC Ms Overload 468D22 - Dam of Lot 41

42 G&R MS HOLLYWOOD 240L

Born: 11/27/23 R10556317 Gen: 5 PHN: 240L From G & R Brangus

TBF HOLLYWOOD 881E10
R10352687

HOLLYWOOD OF SALACOA 23A53

NEW VISION OF SALACOA 209Y2

MS BRINKS LAMBERT 881U1

MS SVF PATTON 23Y66

LAMBERT OF BRINKS 317R3

ATLANTA OF SALACOA 488Z

G5 MS TRANSFORMER G1

LAMBERT OF BRINKS 317R3

MS SVF CADENCE 488X11

MC RESOLUTE 129X2

CCC MS 468 SINGLETARY 240Z

GHB MS ATLANTA 240G4
R10403970

CAIN MS RESOLUTE 240E4

CC 14-166 SINGLEWTH 2402																
BW		WW			YW			REA		FT		IMF				
77 (99%)		586 (106%)			963 (100%)											
CED	BW	WW	YW	M	TM	CEM	SC	REA	IMF	FT	Hfr Prq	Stay	Cow Wt	TI	FI	
7.7	-1.6	32	58	5	21	2.46	0.61	0.5	0.11	0.015	4.49	1.74	-15.77	2.97	3.94	
15%	10%	15%	15%	85%	35%	90%	30%	10%	40%	80%	35%	50%	4%	15%	40%	

This lady calved prior to 2 years old, showing her fertility. Her EPDs are led by top 10% BW, REA, 15% CED, WW, YW, and TERM. She has a bull calf at side by our Big Town son CB Path Forward 60L5. **Lot 42A:** Bull calf born 9/8/25 sired by CB Path Forward 60L5, R10527793. BW: 88 lbs. Registration pending.



G&R Ms Hollywood 240L

SPRING BRED HEIFERS

44 VF MS BLUE BLOOD 10M2

Born: 4/23/24 UB10570435 Gen: 2 PHN: 10M2

From Vanna Farms

MC BLUE BLOOD 129H18
UB10480215

BWCC BIG TOWN 192B16

MC NUFF SAID 889T50

MC MS RESOURCE 129A15

BWCC MS REVELATION 192W8

BWCC HOT SHOT 192D31

S A V RESOURCE 1441

BWCC MS HOT SHOT 10G17
UB10444381

BWCC MS BOULDER 10E72

MC MS GUNS 129Y327

BWCC SLICK 7B

BWCC MS STATEMENT 192B48

MC BOULDER 889Z14

BWCC MS RESOURCE 10A2

BW			WW			YW			REA			FT			IMF		
63 (100%)			519 (100%)			704 (100%)			7.85 (100%)			0.16 (100%)			4.09 (100%)		
CED	BW	WW	YW	M	TM	CEM	SC	REA	IMF	FT	Hfr	Prq	Stay	Cow	Wt	TI	FI
7.9	-1.5	40	71	12	32	2.34	0.75	0.54	0.26	0.01	10.83	3.51	-0.69	3.98	5.43		
15%	15%	3%	3%	25%	4%	90%	20%	5%	20%	75%	2%	5%	55%	2%	10%		

Sired by MC Blue Blood 129H18, the \$150,000 son of BWCC Big Town 192B16, this female offers a powerful combination of growth, structural integrity, and maternal strength. Her dam, BWCC Ms Hot Shot 10G17, is a high-performance female known for her productivity and udder quality, and she traces back to the elite donors BWCC Ms Boulder 10E72—a maternal line known for its impact and longevity. Phenotypically, she is deep-ribbed, clean-fronted, and balanced. Genetically, she is a standout — ranking in the top 5% of the Brangus breed in 7 traits with 12 posted in the top 15%! Pasture exposed to MC Full Tank 468L20, selected by Vanna Farms for \$28,000 as a standout in the 2025 Mound Creek Sale, out of the elite BWCC Ms Overload 468E38 from the proven and productive 468 cow family. Confirmed 60 days bred on 8/6/25—a valuable mating backed by performance, consistency, and long-term genetic return. **AI'd to VF Blue Chip 468L54, R10536877 on 6/5/25. Pasture exposed to MC Full Tank 468L20, UB10560803 from 6/11/25 to 8/6/25.**



MC Blue Blood 129H18 • Sire of Lots 44, 54, 56, 80, 96, 97

45 ABF MS BLACK ROCK 19M

Born: 4/11/24 R10558668 Gen: 6 PHN: 19M

From Addison Brangus Farms

ABF BLACK ROCK 27H5
R10458503

DMR EMPIRE 795D12

TJM THREE D 302A

ABF MS SATIN 27E2

MS DMR JETHRO 795Y2

ABF SATIN 857B

STONEWALL OF RRR 222W6

ABF MS ON TASK 27C1

CSONKA OF BRINKS 30R4

MS SALACOA STONEWALL 19E
R10344836

MS SALACOA NEW VISION 19C2

MS BRINKS LOMBARDI 222S20

NEW VISION OF SALACOA 209Y2

MS SVF WARRIOR 19X2

BW			WW			YW			REA		FT		IMF			
73 (96%)			635 (93%)			899 (90%)			12.11 (103%)		0.42 (87%)		4.04 (98%)			
CED	BW	WW	YW	M	TM	CEM	SC	REA	IMF	FT	Hfr	Prq	Stay	CowWt	TI	FI
7.4	-1.1	25	39	5	17	4.37	0.64	0.3	0.01	0.001	6.59	2.67	-9.53	1.8	5.09	
20%	20%	30%	50%	85%	60%	25%	30%	30%	65%	45%	20%	20%	15%	45%	10%	

Ms Black Rock is a fancy heifer that has 13 EPD traits in the breed's top 45% or better, including top 20% CED and BW and 30% WW & REA. 19M had a 635-pound WW and a 899-pound yearling weight. She also scanned a 12.11 REA and a 4.06 IMF. She sells safe in calf. **AI'd to Suhn's Triple Crown 416J39, UB10490384 on 5/9/25. Pasture exposed to ABF Dutton 20L3, 10543765 from 5/19/25 to 7/31/25.**



ABF Ms Black Rock 19M

46 ABF MS EMPIRE 23M

Born: 2/22/24 R10558672 Gen: 4 PHN: 23M

From Addison Brangus Farms

DMR EMPIRE 795D12
R10323531

TJM THREE D 302A

CB FINAL CUT 924X

MS DMR JETHRO 795Y2

OAKS MS PATTON 302X3

MC SOMETHING SPECIAL 129W14

MC JETHRO 00S3

MS BRINKS UPPER CUT 795R9

ABF MS SOMETHING SPECIAL 23F9
R10403243

ABF MS CSONKA 740Z13 23B2

MC JETHRO 00S3

MC MS LEAD GUN 129T12

QCB CSONKA 740Z13

QCB MS NUFF SAID 23Z13

BW		WW			YW			REA		FT			IMF			
77 (100%)		608 (100%)			864 (100%)			9.49 (100%)		0.41 (100%)			4.51 (100%)			
CED	BW	WW	YW	M	TM	CEM	SC	REA	IMF	FT	Hfr	Prq	Stay	CowWt	TI	FI
8.1	-0.5	29	48	7	21	4.93	0.63	0.08	0.13	0.012	8.44	3.27	1.37	2.28	5	
15%	30%	20%	30%	70%	35%	15%	30%	65%	35%	75%	10%	10%	70%	30%	15%	

23M is a fancy ET heifer out of DMR Empire and one of my favorite donors that walks the pastures at Addison Brangus, ABF Ms Something Special 23F9. Ms Empire has 14 EPD traits in the breed's top 40% or better, including top 15% CED, 20% WW and 30% YW. She is safe in calf. **AI'd to Suhn's Triple Crown 416J39, UB10490384 on 5/9/25. Pasture exposed to ABF Dutton 20L3, 10543765 from 5/19/25 to 7/31/25.**



ABF Ms Empire 23M

SPRING BRED HEIFERS

47 WF MS FINAL TIME 23M

Born: 5/17/24 R10574869 Gen:2 PHN: 23M

From Willmore Farms

BWCC FINAL TIME 313H2
R10451991

BWCC MCQUEEN 192E24

RBM MS SPECIAL FORCES 313A

DMR KINGDOM 535G45

MS SALACOA N SURRENDER 23G22

BWCC CROSS FIT 541B28

BWCC MS CHILL FACTOR 192A60

MC SPECIAL FORCES 924Y4

RBM MS RITE DIRECTION 313X3

DMR EMPIRE 795D12

MS DMR CORONADO 535A8

NEVER SURRENDER OF SALACOA 803D9

MS SALACOA ATLANTA 23B53

BW		WW		YW		REA		FT		IMF					
76 (105%)															
CED	BW	WW	YW	M	TM	CEM	SC	REA	IMF	FT	Hfr Prg	Stay	Cow Wt	TI	FI
7.7	-0.6	32	49	5	21	3.54	0.35	0.41	0.32	0.037	9.14	3.08	-1.19	2.87	4.13
15%	30%	15%	25%	85%	35%	55%	60%	15%	15%	>95%	5%	15%	55%	15%	35%

She has great caving ease, birth weight, weaning and yearling weights. BWCC Final Time daughter and from the 23 cow family. **AI'd to Suhn's Triple Crown 416J39, UB10490384 on 6/12/25.** Pasture exposed to VF Blue Blood 889L31, UB10554346 from 6/22/25 to 9/15/25.



WF Ms Final Time 23M

48 ABF MS ELDORADO 99M

Born: 4/2/24 R10558682 Gen:6 PHN: 99M

From Addison Brangus Farms

DMR ELDORADO 30B15
R10284830

TJM CORONADO 535X

SUHN'S MISS PATTON 30X6

AMERICUS OF SALACOA 468Y16

MS SALACOA ATLANTA 99B11

CB HOMBRE 541T3

MS BRINKS LAMBERT 535T4

PATTON OF BRINKS 30T22

SUHN'S MS DUKE 30M

HANNIBAL OF BRINKS 784T6

MS BRINKS NEW ERA 468P27

ATLANTA OF SALACOA 488Z

MS SVF GENTLEMAN 99X7

BW			WW			YW			REA		FT		IMF		
69 (91%)			670 (98%)			919 (92%)			10.5 (90%)		0.49 (102%)		4.24 (103%)		
CED	BW	WW	YW	M	TM	CEM	SC	REA	IMF	FT	Hfr Prg	Stay	Cow Wt	TI	FI
10.1	-2.7	17	28	2	11	3.97	0.56	0.02	0.13	0.007	6.17	2.62	-6.84	1.53	4.69
4%	3%	60%	75%	95%	90%	40%	35%	75%	35%	65%	20%	25%	25%	55%	20%

This fancy Eldorado daughter has 11 EPD traits in the breed's top 40% or better, including top 3% BW, 4% CED and 35% IMF. Ms Eldorado's dam is a beautiful cow, that we thought enough of her to flush back in the spring. 99M is safe in calf. **AI'd to CB Masterpiece 2051F, 10383790 on 5/9/25.** Pasture exposed to ABF Dutton 20L3, 10543765 from 5/19/25 to 7/31/25.



ABF Ms Eldorado 99M

50 HH MS MODELO 99M5

Born: 3/26/24 R10568554 Gen:4 PHN: 99M5

From Double H Farms

T3 MODELO 129H4
R10439751

BWCC BIG TOWN 192B16

PR MS HOLLYWOOD 129F10

BWCC BIG TOWN 192B16

MB MS ABRAMS 99Z

MC NUFF SAID 889T50

BWCC MS REVELATION 192W8

HOLLYWOOD OF SALACOA 23A53

MB MS INFOCUS 129X2

MC NUFF SAID 889T50

BWCC MS REVELATION 192W8

MC ABRAMS 468T22

MB MS COLEMAN 99X5

BW		WW		YW		REA		FT		IMF					
80 (100%)		717 (100%)		1071 (100%)											
CED	BW	WW	YW	M	TM	CEM	SC	REA	IMF	FT	Hfr Prg	Stay	Cow Wt	TI	FI
6.1	-0.3	39	60	9	29	3.5	0.78	0.55	0.32	0.018	11.63	2.7	4.9	3.53	3.66
35%	35%	4%	10%	50%	10%	55%	20%	5%	15%	85%	1%	20%	85%	5%	50%

HH Ms Modelo 99M5 is a donor prospect in the making. She is a stout and powerfully made Modelo daughter out of the famed 99 cow family. She posted an incredible 11 EPDs in the top 35% including top 1% Hfr Preg, Top 4% WW, top 5% REA and Terminal Index and top 10% YW. She posted an actual WW of 730 lbs and went on to mash the scales at 1071 lbs at YW. She is bred to the exciting and powerful Desperado bull from Sewell cattle company, which should be an exciting mating. Take this fancy bred heifer home, and build your herd around her! **AI'd to DMR Admiral 535K13, 10505245 on 5/3/25.** Pasture exposed to Sewells Desperado 99L12, 10532689 from 5/12/25 to 8/28/25.



T3 Modelo 129H4 • Sire of Lot 50

SPRING BRED HEIFERS

51 RBF MS BLACK TOP 188M2

Born: 4/14/24 R10556844 Gen:2 PHN: 188M2

From River Bend Farms

BWCC BLACK TOP 192G22
R10444674

BWCC MILE MARKER 889E32

BWCC CROSS FIT 541B28
BWCC MS NUFF SAID 889Z24
BWCC CRUISE 889Z28
BWCC MS BRAND NAME 192Z46
TJM THREE D 302A
CB MS HOMBRE 924Z11
CB NEXT STEP 222W
QCB MS PERFECTION 188Y3

MGB MS CAPITAL GAIN 188F
R10408051

BWCC MS CRUISE 192B62

CB CAPITAL GAIN 924D19

WAT MISS 222- 188Z

BW		WW		YW		REA		FT		IMF					
68 (104%)															
CED	BW	WW	YW	M	TM	CEM	SC	REA	IMF	FT	Hfr Prg	Stay	Cow Wt	TI	FI
6	-0.3	27	50	7	21	2.89	0.08	0.29	0.03	0.011	3.43	2.54	1.18	2.22	4.37
35%	35%	25%	25%	70%	35%	80%	85%	30%	60%	75%	45%	25%	65%	30%	30%

Take a good look at this Black Top daughter out of the 188 cow family. She is extreme in her balanced genomic profile with 12 GE-EPDs in the upper 30% of the breed. Paced by 25% WW and YW, Stayability and Breed Back. AI'd to VF Blue Chip 468L54, R10536877 on 5/7/25. Pasture exposed to GP Beethoven 313L12, UB10547251 from 5/15/25 to 8/7/25. Confirmed pregnant.



BWCC Black Top 192G22 • Sire of Lot 51

52 MS MC CRUISE 192L4

Born: 11/29/23 R10542411 Gen:1 PHN: 192L5

From Moses Cattle

BWCC CRUISE 323D3
UB10349309

BWCC CRUISE 889Z28

MC ELEGIDO 924W6
BWCC MS LEAD GUN 889W26
S A V ROCK SOLID 2251
BWCC MS ROCK STAR 323X2
CSOKA OF BRINKS 30R4
MS BRINKS GD FORTUNE 541P103
STONEWALL OF RRR 222W6
SVF CATAWBA 192 W241

MS SALACOA LEGENDS 192E7
R10369248

BWCC MS ROCK SOLID 323B

LEGENDS OF BRINKS 541B17

MS SALACOA STONEWALL 192B4

BW		WW		YW		REA		FT		IMF					
65 (98%)		668 (100%)													
CED	BW	WW	YW	M	TM	CEM	SC	REA	IMF	FT	Hfr Prg	Stay	Cow Wt	TI	FI
5.5	0	24	43	9	21	4.09	0.32	0.36	0.14	-0.003	6.1	3.06	-1.51	2.27	5.43
45%	45%	35%	40%	50%	35%	35%	60%	20%	35%	30%	20%	15%	50%	30%	10%

If you're looking for a well-balanced heifer, here she is. She boasts a top 15% Stay, top 10% Fert Index, top 20% REA, with above average CED, BW, WW, YW. This is the type of heifer that will stay in your program for many years to come. She is confirmed AI Bred to Kingdom. AI'd to DMR Kingdom 535G45, 10434685 on 5/23/25. Pasture exposed to ACE Kingdom 209K2, 10495537 from 6/7/25 to 8/7/25. Confirmed AI bred to DMR Kingdom 535G45 on 8/1/25



BWCC Cruise 323D3 • Sire of Lot 52

53 HCB 200L MS JUSTIFIED

Born: 9/27/23 R10540954 Gen:1 PHN: 200L

From Hurricane Creek Brangus

DMR JUSTIFIED 30G82
R10422088

BWCC CROSS FIT 541B28

MC CROSSOVER 834Y
MC MS LUCIA 541U
DMR THE CHAIRMAN 415A11
SUHN'S MISS PATTON 30X6
S A V FINAL ANSWER 0035
MISS CRC GOOD FORTUNE 392S
SOUTHERN DEAL MAKER 468W40
PB MS LEAD TYSON 200U1

L&W MS FINAL ANSWER UB 200H
UB10447665

MS DMR CHAIRMAN 30C2

CRC FINAL ANSWER 392C25

RVR MS LEAD DEAL 200A2

BW			WW			YW			REA		FT		IMF			
66 (95%)			845 (105%)			1154 (103%)										
CED	BW	WW	YW	M	TM	CEM	SC	REA	IMF	FT	Hfr	Prg	Stay	Cow Wt	TI	FI
6.3	0	27	51	0	13	3.95	0.5	0.28	0.45	0.016	5.12	1.61	0.27	3.1	2.71	
30%	45%	25%	25%	>95%	80%	40%	45%	30%	5%	85%	30%	55%	60%	10%	85%	

She is a wide-bodied DMR Justified daughter. She carries 8 EPD traits ranking in the top 40% of the breed, including 20% for WW and YW. Pasture exposed to ABF Cash Flow 23K7, UB10514078 from 6/9/25 to 8/20/25. Confirmed safe in calf.



HCB 200L Ms Justified

SPRING BRED HEIFERS

54 CCR MS BLUE BLOOD 209M

Born: 4/12/24 UB10563990 Gen:2 PHN: 209M

From Cold Creek Ranch

MC BLUE BLOOD 129H18
UB10480215

BWCC BIG TOWN 192B16

MC NUFF SAID 889T50
BWCC MS REVELATION 192W8

MC MS RESOURCE 129A15

S A V RESOURCE 1441

NEVER SURRENDER OF SALACOA 803D9

MC MS GUNS 129Y327

MC BOULDER 889Z14

MS SALACOA N SURRENDER 209G71
UB10437587

TTR A5003 U0286 209L11

MS BRINKS LOMBARDI 803S25

THREE TREES DOUBLE DESIGN

MS BRINKS BRIGHT SIDE 209L11

BW			WW			YW			REA			FT			IMF		
74 (100%)			661 (100%)			939 (100%)			10.05 (100%)			0.27 (100%)			4.94 (100%)		
CED	BW	WW	YW	M	TM	CEM	SC	REA	IMF	FT	Hfr	Prg	Stay	Cow	Wt	TI	FI
6.8	-0.8	36	63	8	26	2.48	0.84	0.64	0.37	0.032	9.4	3.28	2.48	3.81	4.49		
25%	25%	10%	10%	60%	15%	85%	15%	2%	10%	>95%	4%	10%	75%	3%	25%		

This UB2 heifer is as well-rounded as it gets both phenotypically and statistically. She maintains femininity yet expresses plenty of depth and bone while posting 14 EPD traits in the top 25% including top 4% Heifer Preg and top 3% Term Index. Royally bred, she is an excellent Blue Blood daughter, and her prolific donor dam traces her lineage back to the great 209L11 donor cow. She is safe to CB Ledger 117K19 due to calve February 19. **AI'd to CB Ledger 117K19, 10514709 on 5/13/25.**



CCR Ms Blue Blood 209M

55 CCR MS BIG LAKE 209L17

Born: 10/14/23 UB10544584 Gen:3 PHN: 209L17

From Cold Creek Ranch

BWCC BIG LAKE 111F4
UB10399796

BWCC CROSS FIT 541B28

MC CROSSOVER 834Y

MC MS LUCIA 541U

BWCC MS ROCK SOLID 111C6

S A V ROCK SOLID 2251

NEVER SURRENDER OF SALACOA 803D9

MC MS STRYKER 111U25

MC BOULDER 889Z14

MS SALACOA N SURRENDER 209G71
UB10437587

TTR A5003 U0286 209L11

MS BRINKS LOMBARDI 803S25

THREE TREES DOUBLE DESIGN

MS BRINKS BRIGHT SIDE 209L11

BW		WW		YW		REA		FT		IMF					
79 (100%)		623 (100%)		887 (100%)											
CED	BW	WW	YW	M	TM	CEM	SC	REA	IMF	FT	Hfr Prg	Stay	Cow Wt	TI	FI
3.7	1.4	46	76	1	24	3.79	1.16	0.51	0.47	0.029	8.74	2.6	4.22	4.21	3.46
70%	85%	1%	2%	>95%	25%	45%	4%	10%	4%	95%	10%	25%	80%	2%	60%

This Big Lake daughter is big-topped and thick. She is wide-centered with plenty of depth. Her donor dam is a Never Surrender daughter who traces her lineage back to the iconic Camp Cooly donor and performance queen, 209L11. 209L17 has top-end EPDs indicating top 1% WW and terminal index, 2% YW and top 4% SC, with top-end REA and IMF and excellent heifer preg. This UB2 heifer is safe in calf to MC Blue Blood 129H18 due to calve Feb 19th. **AI'd to MC Blue Blood 129H18, 10480215 on 5/13/25.**



CCR Ms Big Lake 209L17

56 CCR MS BLUE BLOOD 209L24

Born: 11/11/23 UB10544736 Gen:2 PHN: 209L24

From Cold Creek Ranch

MC BLUE BLOOD 129H18
UB10480215

BWCC BIG TOWN 192B16

MC NUFF SAID 889T50

BWCC MS REVELATION 192W8

MC MS RESOURCE 129A15

S A V RESOURCE 1441

NEVER SURRENDER OF SALACOA 803D9

MC MS GUNS 129Y327

MC BOULDER 889Z14

CCR MS NEVER SURRENDER 209G
UB10447808

TTR C5010 M140 X6010

MS BRINKS LOMBARDI 803S25

HOOVER HAWKEYE

TTR X6010 317R3 209L11

BW			WW			YW			REA		FT		IMF		
65 (100%)			631 (100%)			853 (100%)									
CED	BW	WW	YW	M	TM	CEM	SC	REA	IMF	FT	Hfr Prg	Stay	Cow Wt	TI	FI
7	-0.8	39	72	8	28	1.87	0.97	0.86	0.31	0.021	9.95	3.37	1.63	4.19	4.9
25%	25%	4%	2%	60%	10%	95%	10%	1%	15%	90%	3%	10%	70%	2%	15%

This 2nd generation UB2 Blue Blood daughter carries a big rib shape, is long fronted, deep sided and moderate in stature. Her sire Blue Blood, is one of the most in demand young herd sires in the breed. Her donor dam is a super impressive Never Surrender daughter who traces her lineage back to the iconic 209L11 donor. This heifer boasts curve-bending EPDs with 14 traits and indexes in the top 25% with most being better. This young donor prospect was AI'd to CB Badge 468L63. **AI'd to CB Badge 468L6, 10563079 on 8/29/25.**



CCR Ms Blue Blood 209L24

SPRING BRED HEIFERS

57 WF MS MONUMENT 222M

Born: 4/8/24 R10569994 Gen: 1 PHN: 222M From Willmore Farms

MR WF J160
UB10478438

MS. LOF SKYHAWK PRES 373
R10472592

BWCC MONUMENT 10D7

MS. WCC BRICKHOUSE 1373G

SKYHAWKS PRES 726E3

MISS LOF CHISOM 237

MC BOULDER 889Z14
BWCC MS RESOURCE 10A10
SF BRICKHOUSE 909D9
CB MS THREE D 1373E6
SKYHAWKS PRESIDENTE
SKYHAWKS MS HELEN 726Y
SUHN'S CHISHOLM 331W45
MS BRINKS LAMBERT 222T

BW		WW		YW		REA		FT		IMF					
67 (92%)															
CED	BW	WW	YW	M	TM	CEM	SC	REA	IMF	FT	Hfr Prg	Stay	Cow Wt	TI	FI
5.5	-0.6	23	39	7	19	3.27	0.93	0.29	0.35	0.029	4.95	1.92	-7.15	2.48	3.53
45%	30%	35%	50%	70%	50%	65%	10%	30%	10%	95%	30%	45%	25%	25%	55%

This is another Monument 10D7 granddaughter. Really good numbers. She will be one you want in your front lot. Great eye appeal! AI'd to Suhn's Triple Crown 416J39, UB10490384 on 6/12/25. Pasture exposed to VF Blue Blood 889L31, UB10554346 from 6/22/25 to 9/15/25.



WF Ms Monument 222M

58 WF MS THREE D 311M

Born: 4/3/24 R10576670 Gen: 1 PHN: 311M From Willmore Farms

MR WF J175
R10481009

MS WF H135
UB10477797

ELC MR THREE D 845F6

ELC PASSPORT 96G14

ELC MR FINAL CUT 54F

MS L.O.F. 310

TJM THREE D 302A
CLVR MISS RACHEL 845Y
ELC MR PASSPORT 793D12
MS SVF 23586 96Y4
CB FINAL CUT 924X
ELC MS REAL DEAL 54Z
SVF MR WARRIOR 820Y2
MISS LOF RT 109

BW		WW		YW		REA		FT		IMF					
67 (92%)															
CED	BW	WW	YW	M	TM	CEM	SC	REA	IMF	FT	Hfr Prg	Stay	Cow Wt	TI	FI
5.4	-0.4	22	47	9	21	4.48	0.45	0.22	0.04	0.004	3.99	2.28	4.59	2.14	4.06
45%	35%	40%	30%	50%	35%	25%	50%	40%	55%	55%	40%	30%	80%	35%	35%

This heifer has really done great. Really balanced numbers. Will fit in any cattle program. Pasture exposed to a Monument son, Mr WF J160, UB10478438 from 5/1/25 to 7/2/25 then to VF Blue Blood 889L31, UB10554346 7/3/25 to 9/15/25.



WF Ms Three D 311M

60 CCR MS ACE OF SPADES 406M6

Born: 4/15/24 UB10563992 Gen: 2 PHN: 406M6 From Cold Creek Ranch

ACE OF SPADES 406J
UB10476024

RBR MS RAINANCE 406G
UB10431635

NEVER SURRENDER OF SALACOA 803D9

MS SALACOA CARCASS DSN 406E

S A V RAINANCE 6848

OAKS MS CSONKA 406C53

MC BOULDER 889Z14
MS BRINKS LOMBARDI 803S25
TTR CARCASS DESIGN
TTR A5051 U0286 X6200
COLEMAN CHARLO 0256
S A V BLACKCAP MAY 4136
CSONKA OF BRINKS 30R4
MS BRINKS BRIGHT SIDE 406P17

BW		WW			YW			REA		FT		IMF			
73 (100%)		611 (100%)			1013 (100%)			10.15 (100%)		0.12 (100%)		4.83 (100%)			
CED	BW	WW	YW	M	TM	CEM	SC	REA	IMF	FT	Hfr Prg	Stay	Cow Wt	TI	FI
5.5	0.4	51	90	9	35	3.05	0.86	0.56	0.4	0.005	5.8	2.81	2.28	4.96	4.82
45%	55%	1%	1%	50%	2%	75%	15%	4%	10%	60%	25%	20%	70%	1%	15%

Out of the heart of the Cold Creek replacement herd, this powerhouse Ace of Spades daughter out of one of our top donors RBR Ms Rain Dance 406G, posts a 0.4 BW to top 1% WW and 1% YW. She also boasts top-end maternal, carcass and fertility indexes. This UB1 heifer is a specimen of both balance and consistency. Her bloodline is filled both top and bottom with some of the most influential cattle in the Angus and Brangus breeds. AI'd to CB True Balance 60L, 10527797 on 8/29/25.



CCR Ms Ace of Spades 406M6

SPRING BRED HEIFER



ABF Ms Growth Fund 468M2



Ms DMR Guardian 468C7



CB Growth Fund 2051G11

61

ABF MS GROWTH FUND 468M2

Born: 2/18/24 UB10558665 Gen: 1 PHN: 468M2 From Addison Brangus Farms

CB GROWTH FUND 2051G11
UB10418754

MS DMR GUARDIAN 468C7
R10296914

CB CAPITAL GAIN 924D19

A CROSS RITA A2051

CRC GUARDIAN 9U8U5

MS BRINKS NEW ERA 468P14

TJM THREE D 302A
CB MS HOMBRE 924Z11
CONNELLY CONSENSUS 7229
J & J OT26 RITA 48T
CSONKA OF BRINKS 30R4
MISS 4L BEST BET 9U8P5
NEW ERA OF BRINKS 541J37
MISS BRINKS CADENCE 468G15

BW	WW	YW	REA	FT	IMF
59 (100%)	646 (100%)	951 (100%)	12.86 (100%)	0.44 (100%)	4.31 (100%)
CED BW WW YW M TM CEM SC REA IMF FT Hfr Prg Stay Cow Wt TI FI					
5.9 -1.6 23 48 11 23 6.61 0.75 0.55 0.11 0.002 7.78 4.18 13.73 2.69 6.13					
35% 10% 35% 30% 30% 30% 1% 20% 5% 40% 50% 10% 2% >95% 20% 2%					

Ms Growth Fund has it all. She has outstanding physical appearance, EPDs and performance. 468M2 is an ET female out of our 468C7 donor that has done an outstanding job at Addison Brangus. Ms Growth Fund has 16 EPD traits in the breed's top 40% or better, including top 5% REA, 10% BW & Heifer Preg, 30% YW, MILK and TM and 35% CED and WW. Her EPDs are backed by her performance at 646-pound WW and 951-pound YW. She scanned a 12.86 REA and had a 4.31 IMF. She sells safe in calf. AI'd to DMR Kingdom 535G45, 10434685 on 5/9/25. Pasture exposed to ABF Dutton 20L3, 10543765 from 5/19/25 to 7/31/25.

SPRING BRED HEIFER



ABF Ms Empire 468M6

62 ABF MS EMPIRE 468M6

Born: 1/20/24 R10560313 Gen: 5 PHN: 468M6 From Addison Brangus Farms

DMR EMPIRE 795D12
R10323531

TJM THREE D 302A

CB FINAL CUT 924X
OAKS MS PATTON 302X3
MC JETHRO 00S3
MS BRINKS UPPERCUT 795R9
CSOKA OF BRINKS 30R4
MISS 4L BEST BET 9U8P5
NEW ERA OF BRINKS 541J37
MISS BRINKS CADENCE 468G15

MS DMR JETHRO 795Y2

MS DMR GUARDIAN 468C7
R10296914

CRC GUARDIAN 9U8U5

MS BRINKS NEW ERA 468P14

MIDWINTER EXERCISE DATA																	
BW			WW			YW			REA		FT			IMF			
64 (100%)			662 (100%)			1002 (100%)			14.26 (100%)		0.56 (100%)			4.09 (100%)			
CED	BW	WW	YW	M	TM	CEM	SC	REA	IMF	FT	Hfr	Prg	Stay	Cow	Wt	TI	FI
6.8	-0.8	22	32	5	16	6.27	0.65	0.33	-0.04	-0.002	9.99	4.25	11.7	1.37	6.04		
25%	25%	40%	65%	85%	65%	2%	30%	25%	85%	35%	3%	1%	95%	60%	2%		



Ms DMR Guardian 468C7



DMR Empire 795D12

Our 468C7 donor has done another outstanding job with this ET heifer out of DMR Empire. Ms Empire is deep, thick and has bone to spare. She has 12 EPD traits in the breed's top 40% or better, including top 2% CEM, 25% CED, BW & REA and 30% SC. Ms Empire also has above-average personal performance. She started out at 64 pounds, had a 662-pound WW and an outstanding 1002-pound YW. She scanned a big REA at 14.26 and had a 4.09 IMF. She sells safe in calf. **AI'd to CB Masterpiece 2051F, 10383790 on 5/9/25. Pasture exposed to ABF Dutton 20L3, 10543765 from 5/19/25 to 7/31/25.**

SPRING BRED HEIFERS

63 SCC MS GROWTH FUND 535M9

Born: 2/15/24 UB10562139 Gen:1 PHN: 535M9 From Sewell Cattle Co. Inc.

CB GROWTH FUND 2051G11
UB10418754

SEWELLS MS DYNAMIC 535K11
R10508509

CB CAPITAL GAIN 924D19

A CROSS RITA A2051

DMR JRT DYNAMIC 30G36

WAT MS BAXTER 535C

TJM THREE D 302A
CB MS HOMBRE 924Z11
CONNEALY CONSENSUS 7229
J & J OT26 RITA 48T
DMR EMPIRE 795D12
MS DMR CHAIRMAN 30C2
CB HOMBRE 132X7
MS RJ NEWT 535T

BW		WW		YW		REA		FT		IMF					
80 (106%)		700 (112%)													
CED	BW	WW	YW	M	TM	CEM	SC	REA	IMF	FT	Hfr Prq	Stay	Cow Wt	TI	FI
4.9	-0.5	37	68	8	27	3.82	0.69	0.37	0.19	0.018	8.02	3.1	3.08	3.43	4.63
55%	30%	5%	4%	60%	15%	45%	25%	20%	25%	85%	10%	15%	75%	10%	20%

Take a look at this outstanding Growth Fund daughter that stems from a 3/4 sibling to the great Investment bull that still walks the green pastures at Sewell Cattle Company. From her impeccable genomic makeup with rankings in the top 30% or higher for an incredible 13 traits and indexes, to her flawless phenotype with an abundance of bone and muscle while maintaining plenty of femininity. We're loving the Relentless progeny that are on the ground and coming into production and the calf that this outstanding Growth Fund daughter is carrying could pay for the whole deal. AI'd to DMR Relentless 535K15, 10505247 on 4/24/25. Pasture exposed to G+ Revolution 535M34, 10564361 from 5/5/25 to 6/19/25.



SCC Ms Growth Fund 535M9

64 WF MS MONUMENT 541M

Born: 4/1/24 R10569995 Gen:1 PHN: 541M From Willmore Farms

MR WF J160
UB10478438

CCR MS TINSELTOWN 541H9
R10471816

BWCC MONUMENT 10D7

MS. WCC BRICKHOUSE 1373G

TINSELTOWN OF SALACOA 468D4

COLD CREEK MS LANDAU 541Z72

MC BOULDER 889Z14
BWCC MS RESOURCE 10A10
SF BRICKHOUSE 909D9
CB MS THREE D 1373E6
HOLLYWOOD OF SALACOA 23A53
MS BRINKS NEW ERA 468P22
CRC LANDAU 263X2
MS BRINKS GD FORTUNE 541P96

BW		WW		YW		REA		FT		IMF					
70 (97%)															
CED	BW	WW	YW	M	TM	CEM	SC	REA	IMF	FT	Hfr Prq	Stay	Cow Wt	TI	FI
4.8	-0.4	29	52	7	21	3.23	0.85	0.48	0.27	0.027	7.52	2.19	-1.38	2.96	3.41
55%	35%	20%	20%	70%	35%	65%	15%	10%	15%	95%	15%	35%	55%	15%	60%

Monument 10D7 granddaughter and the 541 Cow family. Great eye-appeal! CE, BW, WW and YW are all there. AI'd to DMR Dutton 331H8, 10462638 on 6/12/25. Pasture exposed to VF Blue Blood 889L31, UB10554346 from 6/22/25 to 9/15/25.



WF Ms Monument 541M

65 HCB 798L MS STONEWALL

Born: 9/21/23 R10540953 Gen:2 PHN: 798L From Hurricane Creek Brangus

STONEWALL OF RRR 222W6
R10150860

RBC 468E14 BOCEPHUS 798J
R10486008

CSONKA OF BRINKS 30R4

MS BRINKS LOMBARDI 222S20

BWCC BOCEPHUS 468E14

RBC MS VISION 392B13 798E

LEAD GUN OF BRINKS 222K14
MISS BRINKS UPPER CUT 30L18
LOMBARDI OF BRINKS 468N10
MISS BRINKS PICASSO 222K
BWCC BOCEPHUS 111C2
BWCC MS ROCK STAR 468Y14
SALACOA NEW VISION 392B13
WPH MS DIANA 798U

BW		WW		YW		REA		FT		IMF					
73 (105%)		761 (95%)		1083 (97%)											
CED	BW	WW	YW	M	TM	CEM	SC	REA	IMF	FT	Hfr Prq	Stay	Cow Wt	TI	FI
5	-0.4	21	42	9	20	3.91	0.78	0.56	0.19	0.02	5.14	3.14	-12.03	2.44	5.73
50%	35%	45%	40%	50%	45%	40%	20%	4%	25%	90%	30%	10%	10%	25%	4%

She is a wide-bodied Stonewall daughter that boasts 15 EPD traits ranking in the top 45% of the breed. She is an easy-keeper. AI'd to DMR Dutton 331H8, 10462638 on 5/19/25. Pasture exposed to ABF Cash Flow 23K7, UB10514078 from 6/9/25 to 8/18/25. Confirmed bred to AI date.



HCB 798L Ms Stonewall

SPRING BRED HEIFERS

66 RBF MS FINAL TIME 889L3

Born: 9/26/23 UB10556829 Gen:1 PHN: 889L3

From River Bend Farms

BWCC FINAL TIME 313H2
R10451991

BWCC MCQUEEN 192E24

RBM MS SPECIAL FORCES 313A

S A V INTERNATIONAL 2020

BWC MS TANK 889T4

BWCC CROSS FIT 541B28
BWCC MS CHILL FACTOR 192A60
MC SPECIAL FORCES 924Y4
RBM MS RITE DIRECTION 313X3
S A V HARVESTOR 0338
S A V EMBLYNETTE 5483
MC JOHN WAYNE 165N3
MC MS EXTRAVAGANT 889P4

VF MS INTERNATIONAL 889C2
UB10297302

BW			WW			YW			REA			FT			IMF		
68 (100%)			677 (100%)			841 (100%)			9.27 (100%)			0.3 (100%)			4.2 (100%)		
CED	BW	WW	YW	M	TM	CEM	SC	REA	IMF	FT	Hfr	Prg	Stay	Cow	Wt	TI	FI
6.2	0.7	35	54	5	23	3.51	0.44	0.51	0.52	0.037	9.69	3.22	0.3	3.5	4.21		
35%	65%	10%	20%	85%	30%	55%	50%	10%	3%	>95%	4%	10%	60%	5%	35%		

She is sired by the \$150,000 Final Time and out of the famed 889C2 donor from the Vanna Farms program. She has the look and performance of a donor in the making. With big time growth, carcass, and maternal ability written within her genomic profile. Be sure to find this Genetic Jewel sale day. **AI'd to MC Hammer Time 129L10, UB10539114 on 5/7/25. Pasture exposed to VF Blue Chip 468L54, R10536877 from 5/15/25 to 8/7/25. Confirmed pregnant .**



VF Ms International 889C2 • Dam of Lot 66

67 RBF MS TAKE OVER 924M2

Born: 3/14/24 UB10556838 Gen:1 PHN: 924M2

From River Bend Farms

VF TAKE OVER 889J2
UB10490626

BWCC MERGER 468F9

VF MS INTERNATIONAL 889C2

MSC CROSSCUT 329E10

RBM MS RESET 924D8

BWCC MONUMENT 10D7
BWCC MS OVERLOAD 468D22
S A V INTERNATIONAL 2020
BWC MS TANK 889T4
BWCC CROSS FIT 541B28
MB MS ROCK STAR 329X2
MC RESET 889A21
RBM MS JETHRO 924Z6

SB MS CROSSCUT 924J5
R10476455

BW			WW			YW			REA			FT			IMF		
67 (102%)																	
CED	BW	WW	YW	M	TM	CEM	SC	REA	IMF	FT	Hfr	Prg	Stay	Cow	Wt	TI	FI
2.8	1.5	35	60	9	27	3.11	0.6	0.5	0.47	0.029	7.25	3.57	3.7	3.64	5.09		
80%	85%	10%	10%	50%	15%	70%	35%	10%	4%	95%	15%	5%	80%	4%	10%		

These Take Over daughters have been rising to the top of their contemporary groups at River Bend and Vanna Farms. She comes out of the Scamardo program going back to the famed 924 cow family. She is bold in her phenotype with an impressive genomic profile with 11 traits and indices in the upper 15% of the breed. **AI'd to MC Hammer Time 129L10, UB10539114 on 5/7/25. Pasture exposed to GP Beethoven 313L12, UB10547251 from 5/15/25 to 8/7/25. Safe 6 months on 8/6/25.**



MC Hammer Time 129L10 • AI Service Sire of Lot 67



SPRING BRED HEIFERS

68 VF MS BEDROCK 924M3

Born: 4/10/24 UB10570416 Gen:1 PHN: 924M3

From Vanna Farms

MC BEDROCK 92J14
UB10507145

MC BEDROCK 541G20

MC MS REAL MASSIVE 92D9

MC BOULDER 889Z14
MC MS RESOURCE 541A4
S A V REAL MASSIVE 4879
MC MS NUFF SAID 92A4
BWCC CROSS FIT 541B28
BWCC MS ROCK SOLID 111C6
BWCC MONUMENT 10D7
MS B2K-TBF JETHRO 924Z12

VF MS BIG LAKE 924K6
R10509176

BWCC BIG LAKE 111F4

VF MS MONUMENT 924G12



BWCC Big Lake 111F4 • Paternal Grandsire of Lot 68

BW		WW		YW		REA		FT		IMF							
69 (97%)		570 (93%)		740 (89%)		8.26 (88%)		0.17 (95%)		3.62 (88%)							
CED	BW	WW	YW	M	TM	CEM	SC	REA	IMF	FT	Hfr	Prg	Stay	Cow	Wt	TI	FI
4.7	0.3	29	52	5	20	3.33	0.86	0.35	0.23	0.027	9.64	3.01	2.65	2.67	4.14		
55%	55%	20%	20%	85%	45%	65%	15%	20%	20%	95%	4%	15%	75%	20%	35%		

This sleek, maternally-driven female is sired by the proven MC Bedrock 92J14 and out of a powerful young daughter of VF Ms Big Lake 924K6. Her dam, 924K6, is backed by an exceptional maternal lineage as a daughter of VF Ms Monument 924G12—an outstanding donor female who traces back to the renowned Ms B2K-TBF Jethro 924Z12. This is a pedigree stacked with proven maternal strength and long-term value. Feminine in her design, structurally correct, and well-balanced. Confirmed 55 days bred on 8/6/25 to MC Full Tank 468L20—Vanna Farms' \$28,000 selection from the 2025 Mound Creek Sale and one of the breed's most exciting young sires. This valuable early mating brings together calving ease, maternal excellence, and eye appeal in one forward-thinking package. Pasture exposed to MC Full Tank 468L20, UB10560803 from 6/11/25 to 8/6/25.

69 RVF MS NV SURRENDER 240M11

Born: 3/18/24 R10564771 Gen:5 PHN: 240M11

From River Valley Farms

QVF N SURRENDER 23G19
R10427017

NEVER SURRENDER OF SALACOA 803D9

MS SVF PATTON 23Y66

SALACOA N SURRENDER 23G30

MS THOMAS HOMBRE-240A

MC BOULDER 889Z14
MS BRINKS LOMBARDI 803S25
PATTON OF BRINKS 30T22
SVF MS 23M28
NEVER SURRENDER OF SALACOA 803D9
MS SALACOA STONEWALL 23C51
CB HOMBRE 541T3
MS SOUTHERN BRAXTON 240W15



RVF Ms NV Surrender 240M11

Mid Southern Division 2 Year 15																	
BW		WW				YW		REA		FT		IMF					
66 (96%)																	
CED	BW	WW	YW	M	TM	CEM	SC	REA	IMF	FT	Hfr	Prg	Stay	Cow	Wt	TI	FI
6.1	0.2	24	51	3	15	3.41	0.66	0.4	-0.02	0.011	4.81	2.37	-5.51	2.06	4.35		
35%	50%	35%	25%	95%	70%	60%	30%	15%	75%	75%	30%	30%	30%	35%	30%		

Here is granddaughter by the great Never Surrender. She posts an incredible 7 traits in the top 30% with a very well set of balanced EPDs. To add to that, she is gentle-natured and has the true Brangus female look to make her the whole package! She is the kind to take home and will make you money for years to come. AI'd to CB Masterpiece 2051F, 10383790 on 5/31/25. Pasture exposed to CB Masterpiece 117L8, 1105442186 and to CB Express 60L48, 10549679 from 6/11/25 to 8/13/25.

OPEN HEIFER

71 CCCC MS KINGDOM 000M

Born: 6/5/24 UB10578013 Gen:1 PHN: 000M

From Crooked Creek Cattle Co.

DMR KINGDOM 535G45
R10434685

DMR EMPIRE 795D12

MS DMR CORONADO 535A8

ZWT INTERVENTION 7363

VF MS SOUTHERN COMFORT 000E4

TJM THREE D 302A
MS DMR JETHRO 795Y2
TJM CORONADO 535X
SVF MS 535M31
S A V IMPACT 5595
E A ROSE 918
BWCC SOUTHERN COMFORT 889A
VF MS GAME CHANGER 000B4



CCCC Ms Kingdom 000M

VFMS GAME CHANGER 0004																	
BW		WW				YW			REA		FT		IMF				
74 (100%)		475 (103%)				827 (107%)			8.9 (96%)		0.3 (145%)		2.33 (79%)				
CED	BW	WW	YW	M	TM	CEM	SC	REA	IMF	FT	Hfr	Prg	Stay	Cow	Wt	TI	FI
9.1	-1.6	28	46	4	18	3.66	0.3	0.25	0.19	0.033	7.36	2.83	-0.24	2.44	3.95		
10%	10%	20%	30%	90%	55%	50%	65%	35%	25%	>95%	15%	20%	60%	25%	40%		

Calving Easy Kingdom Daughter. With 7 traits in the top 20% of the breed, this open heifer is going to improve whatever herd she goes to. Her grandam, VF MS Southern Comfort 000E4, recently sold an open heifer for \$9000 in the QVF Invitational and the year before sold embryos for \$1300/piece. They buyer will receive one straw of Suhr's Triple Crown 416J39 semen. Available sale day.

CHOICE OF OPEN HEIFERS • LOTS 71, 72, 73

What an opportunity here. We are offering a choice of these three ET heifers. All three of these Business Line daughters are deep-sided and long as a freight train. Their mother, SAV Blackcap May 0654 is a full sister to the \$45,000 SAV Crush and their dam SAV Blackcap May 4574 is a daughter of the unforgettable SAV Resource 1441. Power in the blood here backed by a true maternal powerhouse, these UB1s will be a superstar addition to anyone's program and are true donor prospects.



SAV Blackcap May 0654 ~ Dam of Lots 72, 73, 74

72 CCCC MS ALL BUSINESS 0654M

Born: 12/17/24 UB10578007 Gen:1 PHN: 0654M From Crooked Creek Cattle Co.

SUHN'S BUSINESS LINE 30D26
R10327046

VF-OAKS ONLINE 918Y3

MC ONSTAR 924W4
VOREL MS AFFIRMED 918U4
CRC NORTH STAR 9U8W3
SUHN'S MISS PATTON 30XS
SITZ UPWARD 307R
MARCYS ERICA 393
SAV RESOURCE 1441
SAV BLACKCAP MAY 5530

SUHN'S MISS NORTH STAR 30A

MARCYS SCALE CRUSHER

SAV BLACKCAP MAY 4574

SAV BLACKCAP MAY 0654
EA19815835

BW		WW		YW		REA		FT		IMF					
80 (100%)		618 (100%)													
CED	BW	WW	YW	M	TM	CEM	SC	REA	IMF	FT	Hfr Prg	Stay	Cow Wt	TI	FI
2.5	0.3	30	57	0	15	1.94	1.28	0.49	0.22	0.003	6.32	2.7	2.12	2.99	4.54
85%	55%	20%	15%	>95%	70%	95%	2%	10%	20%	55%	20%	20%	70%	15%	25%



CCCC Ms All Business 0654M

73 CCCC MS BUSINESS LINE 0654M1

Born: 12/18/24 UB10578008 Gen:1 PHN: 0654M1 From Crooked Creek Cattle Co.

SUHN'S BUSINESS LINE 30D26
R10327046

VF-OAKS ONLINE 918Y3

MC ONSTAR 924W4
VOREL MS AFFIRMED 918U4
CRC NORTH STAR 9U8W3
SUHN'S MISS PATTON 30XS
SITZ UPWARD 307R
MARCYS ERICA 393
SAV RESOURCE 1441
SAV BLACKCAP MAY 5530

SUHN'S MISS NORTH STAR 30A

MARCYS SCALE CRUSHER

SAV BLACKCAP MAY 4574

SAV BLACKCAP MAY 0654
EA19815835

SRY-BREEDER MAR 2000																	
BW		WW		YW		REA		FT		IMF							
82 (100%)		594 (100%)															
CED	BW	WW	YW	M	TM	CEM	SC	REA	IMF	FT	Hfr	Prg	Stay	Cow	Wt	TI	FI
2.4	0.3	30	57	0	15	1.94	1.28	0.49	0.22	0.003	6.32	2.7	2.7	2.12	2.99	4.54	
85%	55%	20%	15%	>95%	70%	95%	2%	10%	20%	55%	20%	20%	70%	15%	25%		



CCCC Ms Business Line 0654M1

74 CCCC MS BUSINESS LINE 0654N

Born: 1/1/25 UB10578009 Gen:1 PHN: 0654N From Crooked Creek Cattle Co.

SUHN'S BUSINESS LINE 30D26
R10327046

VF-OAKS ONLINE 918Y3

MC ONSTAR 924W4
VOREL MS AFFIRMED 918U4
CRC NORTH STAR 9U8W3
SUHN'S MISS PATTON 30XS
SITZ UPWARD 307R
MARCYS ERICA 393
SAV RESOURCE 1441
SAV BLACKCAP MAY 5530

SUHN'S MISS NORTH STAR 30A

MARCYS SCALE CRUSHER

SAV BLACKCAP MAY 4574

SAV BLACKCAP MAY 0654
EA19815835

Dairy Herd - Wm 2000																	
BW		WW				YW		REA		FT		IMF					
87 (100%)		639 (100%)															
CED	BW	WW	YW	M	TM	CEM	SC	REA	IMF	FT	Hfr Prg	Stay	Cow Wt	TI	FI		
2.3	0.3	30	57	0	15	1.94	1.28	0.49	0.22	0.003	6.32	2.7	2.12	2.99	4.54		
85%	55%	20%	15%	>95%	70%	95%	2%	10%	20%	55%	20%	20%	70%	15%	25%		



CCCC Ms Business Line 0654N

OPEN HEIFERS

75 RLJ MS BRIANA'S BIG CAT 1N

Born: 1/2/25 UB10571980 Gen:2 PHN:1 N

From RL Johnson Farms

RLJ ATLANTA'S BIG CAT 541G
UB10413130

CROCHET BRIANA 1G9
UB10311882

MC BIG CAT 6726D8

TBF MS ATLANTA 541D11

CROCHET PRIME DESIGN 23Y2

MS VAQUERO 108 OF LA TERRE

BWCC CROSS FIT 541B28
SOUTHERN BLACKCAP 6726
ATLANTA OF SALACOA 488Z
CCC MS. GRIESE 541U48
SOUTHERN GT SPECIAL FORCE 17
TF MS 23R
QUINN 01 OF LA TERRE
CP 75

BW		WW		YW		REA		FT		IMF					
57 (93%)		596 (93%)													
CED	BW	WW	YW	M	TM	CEM	SC	REA	IMF	FT	Hfr Prg	Stay	Cow Wt	TI	FI
6.1	-0.6	22	45	8	19	3.77	0.74	0.34	0.41	0.005	2.67	1.69	-5.97	3.02	3.88
35%	30%	40%	35%	60%	50%	45%	20%	25%	10%	60%	55%	50%	30%	15%	45%

Offered for your consideration. 14 EPDs in the top 50% of the breed.

76 RLJ MISS BRIANNA'S CAT 1N2

Born: 1/26/25 UB10574126 Gen:2 PHN:1 N2

From RL Johnson Farms

RLJ ATLANTA'S BIG CAT 541G
UB10413130

CROCHET MS BRIANNA 1G21
UB10361948

MC BIG CAT 6726D8

TBF MS ATLANTA 541D11

DESTINY 103A6 HF KG LCOC CC

CROCHET BRIANA 1G9

BWCC CROSS FIT 541B28
SOUTHERN BLACKCAP 6726
ATLANTA OF SALACOA 488Z
CCC MS. GRIESE 541U48
CB HOMBRE 541T3
44 RUBY X103
CROCHET PRIME DESIGN 23Y2
MS VAQUERO 108 OF LA TERRE

BW		WW		YW		REA		FT		IMF					
57 (93%)		749 (117%)													
CED	BW	WW	YW	M	TM	CEM	SC	REA	IMF	FT	Hfr Prg	Stay	CowWt	TI	FI
7	-0.5	41	67	9	29	3.55	0.95	0.4	0.38	0.012	3.18	2	-6.86	3.9	4.21
25	30%	3%	4%	50%	10%	55%	10%	15%	10%	75%	50%	40%	25%	3%	35%

Offered for your consideration. 16 EPDs in the top 50% of the breed. Top 3% weaning weight and top 4% yearling weight.

77 ABF MS BLACKSTONE 20M2

Born: 10/5/24 R10570469 Gen:5 PHN:20M2

From Addison Brangus Farms

ABF BLACKSTONE 23G2
R10410461

ABF MS GUARDIAN 20B
R10277457

BWCC MONUMENT 10D7

QCB MS NUFF SAID 23Z13

CRC GUARDIAN 9U8U5

HF MISS LEAD GUN 20T

MC BOULDER 889Z14
BWCC MS RESOURCE 10A10
MC NUFF SAID 889T50
SVF MS LEADGUN 23S85
CSOKA OF BRINKS 30R4
MISS 4L BEST BET 9U8P5
BRINKS LEAD GUN 415P44
CLEMS NIMITZ 20P6

Table 1: 2014															
BW		WW				YW		REA		FT		IMF			
79 (111%)		583 (99%)				881 (98%)									
CED	BW	WW	YW	M	TM	CEM	SC	REA	IMF	FT	Hfr Prg	Stay	Cow Wt	TI	FI
2.5	0.7	22	39	7	18	4.32	0.69	0.1	0.08	0.001	5.82	2.31	-0.78	1.69	4.26
85%	65%	40%	50%	70%	55%	30%	25%	60%	45%	45%	25%	30%	55%	50%	30%

This Blackstone daughter has 11 EPD traits breed average or better, including top 25% SC and Heifer Preg, 30% CEM and 40% WW. Ms Blackstone's dam has a 359-day CI on her 9 babies. The 20-cow family has been the most fertile cow family at Addison Brangus. 20M2 sells open.



ABF Ms Blackstone 20M2

78 ABF MS BLACKSTONE 20M3

Born: 10/8/24 UB10570471 Gen:1 PHN:20M3

From Addison Brangus Farms

ABF BLACKSTONE 23G2
R10410461

ABF MS RESOURCE 20G
UB10426566

BWCC MONUMENT 10D7

QCB MS NUFF SAID 23Z13

S A V RESOURCE 1441

ABF MS GUARDIAN 20B

MC BOULDER 889Z14
BWCC MS RESOURCE 10A10
MC NUFF SAID 889T50
SVF MS LEADGUN 23S85
RITO 707 OF IDEAL 3407 7075
S A V BLACKCAP MAY 4136
CRC GUARDIAN 9U8U5
HF MISS LEAD GUN 20T

TM 1955 LEAD GEN 201																
BW			WW			YW			REA		FT		IMF			
62 (87%)			550 (93%)			843 (93%)										
CED	BW	WW	YW	M	TM	CEM	SC	REA	IMF	FT	Hfr	Prg	Stay	Cow Wt	TI	FI
6.8	-1.5	26	48	5	19	3.39	0.8	0.34	0.19	0.018	6.92	2.74	-1.22	2.61	4.39	
25%	15%	25%	30%	85%	50%	60%	20%	25%	25%	85%	15%	20%	55%	20%	25%	

Ms Blackstone has 13 EPD traits in the breed's top 30% or better, including top 15% BW and Heifer Preg, 25% CED, WW, REA & IMF and top 30% YW. MS Blackstone's Resource dam is another 20 cow family female. 20G has a 380-day CI. 20M3 sells open.



ABF Ms Blackstone 20M3

OPEN HEIFERS

79 LF MS SURRENDER 23M

Born: 4/27/24 R10569275 Gen: 5 PHN: 23M

From Lykins Farm

QVF N SURRENDER 150G7
R10427025

NEVER SURRENDER OF SALACOA 803D9
DDD MS NANCY 150U8
OAKS LEGACY 392D13
QCB MS 23X2

CJB MS 23G
R10413626

MC BOULDER 889Z14
MS BRINKS LOMBARDI 803S25
SKYHAWKS PRESIDENTE
GTB MS NAOMI 150J
LEGACY 302A4
OAKS MS ONSTAR 392Y2
TCB CATAWBA WARRIOR R532
SVF MS 23M19

BW		WW			YW		REA		FT		IMF				
74 (100%)		531 (100%)			850 (100%)										
CED	BW	WW	YW	M	TM	CEM	SC	REA	IMF	FT	Hfr Prg	Stay	Cow Wt	TI	FI
5.7	0.4	27	52	8	22	3.05	0.78	0.47	0.04	0.01	4.1	2.36	-2.31	2.39	4.42
40%	55%	25%	20%	60%	35%	75%	20%	10%	55%	75%	40%	30%	45%	25%	25%

23M is stylish, feminine, and structurally correct. Top 20% YW, 25% WW and 10% REA. Sired by a Never Surrender son and out of an Oaks Legacy cow.



LF Ms Surrender 23M

80 BS MS BLUE BLOOD 23M2

Born: 10/8/24 R10578989 Gen: 1 PHN: 23M2

From FC Cattle Co. LLC

MC BLUE BLOOD 129H18
UB10480215

BWCC BIG TOWN 192B16

MC NUFF SAID 889T50
BWCC MS REVELATION 192W8
S A V RESOURCE 1441
MC MS GUNS 129Y327
CSONKA OF BRINKS 30R4
MS BRINKS LOMBARDI 222S20
SR WRANGLER WARRIOR T113
SVF MS 23R38

MS SALACOA STONEWALL 23B69
R10274936

MC MS RESOURCE 129A15

STONEWALL OF RRR 222W6

MS SVF WRANGLER 23W9

SWANSON																
BW		WW		YW		REA		FT		IMF						
71 (116%)																
CED	BW	WW	YW	M	TM	CEM	SC	REA	IMF	FT	Hfr	Prg	Stay	Cow Wt	TI	FI
5	-0.3	35	62	12	30	2.9	0.8	0.69	0.35	0.022	8.32	3.4	-6.96	3.76	5.58	
50%	35%	10%	10%	25%	10%	80%	20%	2%	10%	90%	10%	10%	25%	4%	5%	

This Blue Blood heifer is built correctly with a moderate frame and docile personality. Her numbers speak loudly with 11 traits in the breed's top 10%, including top 2% REA. She does all this while maintaining milk and her maternal traits. Being so balanced and strong across her profile allows you to choose any bull of your liking.



BS Ms Blue Blood 23M2

81 ABF MS EMPIRE 23M5

Born: 9/1/24 R10570473 Gen: 5 PHN: 23M5

From Addison Brangus Farms

DMR EMPIRE 795D12
R10323531

TJM THREE D 302A

CB FINAL CUT 924X
OAKS MS PATTON 302X3
MC JETHRO 0053
MS BRINKS UPPER CUT 795R9
MC REVELATION 129T
RBM MS GUNS 924T3
CSONKA OF BRINKS 30R4
SVF MS CADENCE 23S69

ABF MS FINAL CUT 23F5
R10403244

MS DMR JETHRO 795Y2

CB FINAL CUT 924X

ABF MS CSONKA 23D4

SW MS CARRIER 23309																	
BW		WW				YW			REA		FT		IMF				
69 (97%)		624 (106%)				886 (98%)											
CED	BW	WW	YW	M	TM	CEM	SC	REA	IMF	FT	Hfr	Prg	Stay	Cow	Wt	TI	FI
7.2	-0.6	34	49	3	20	4.47	0.3	0.31	0.07	-0.001	10.05	3.75	10.45	2.32	5.25		
20%	30%	10%	25%	95%	45%	25%	65%	25%	50%	40%	3%	3%	95%	30%	10%		

This Empire daughter has a great look, EPDs and performance. She has 15 EPD traits with breed average or better, including top 10% WW, 20% CED and 25% YW. Ms Empire has an outstanding dam sired by Final Cut. She has a 365-day CI on her 5 calves. 23M5 sells open.



DMR Empire 795D12 • Sire of Lots 6, 46, 62, 81, 128

OPEN HEIFERS

82 30M10-MK MS SUPER UNITAS

Born: 9/18/24 R10590249 Gen: 6 PHN: 30M10 From M & K Farm

QVF STRATEGY 535H17
R10460818

DMR STRATEGY 263C6

TJM CORONADO 535X
MS CRC CSONKA 263U
BWCC BIG TOWN 192B16
MS SALACOA STONEWALL 535Z34
EISENHOWER OF SALACOA 23Y69
MS BRINKS LAMBERT 803T6
UNITAS OF BRINKS 361R6
MS BRINKS ALI 30P25

HRF MS SUPER UNITAS 30D10
R10332678

MS SALACOA BIG TOWN 535D21

SUPERFORTRESS OF MAJESTIK 803B3

MS BRINKS UNITAS 30T94

BW		WW		YW		REA		FT		IMF					
72 (100%)		586 (100%)													
CED	BW	WW	YW	M	TM	CEM	SC	REA	IMF	FT	Hfr Prg	Stay	Cow Wt	TI	FI
0	1.5	26	50	13	27	1.51	0.73	0.32	0.19	0.013	5.64	2.62	-4.26	2.52	4.78
95%	85%	25%	25%	20%	15%	>95%	25%	25%	25%	80%	25%	25%	35%	25%	20%

This female records 10 EPD and index values in the top 25% of the breed, balancing numerical values in an attractive, appealing package. You will also appreciate her quiet and docile demeanor. 30M10 is the kind that will make you money.



30M10-MK Ms Super Unitas

83 HF MS EMPIRE 53M

Born: 4/12/24 UB10551283 Gen: 2 PHN: 53M From Hatchee Farms

MCB RELAX 919H2
UB10442129

BWCC RELAX 10A12

S A V RESOURCE 1441
BWCC MS NUFF SAID 10X
SUHN'S HOMBRE 416X40
SUHN'S MISS CSONKA 919Z17
TJM THREE D 302A
MS DMR JETHRO 795Y2
CRC GUARDIAN 9U8U5
B3R T053 LADY 0097 R214

BIG B FARMS MS EMPIRE 53J
UB10485313

SUHN'S MS HOMBRE-X40 919B18

DMR EMPIRE 795D12

SCC MISS GUARDIAN 53C12

BW			WW			YW			REA		FT		IMF		
77 (109%)			528 (110%)			862 (101%)									
CED	BW	WW	YW	M	TM	CEM	SC	REA	IMF	FT	Hfr Prg	Stay	Cow Wt	TI	FI
1.7	1.4	34	48	6	23	4.11	0.69	0.22	0.19	0.01	7.58	2.96	3.47	2.31	4.58
90%	85%	10%	30%	80%	30%	35%	25%	40%	25%	75%	15%	15%	75%	30%	20%

Gentle deep made heifer with 10 traits in the top 30%. You will like her in person as well. The body and bone in this heifer are impressive. This Brangus female has it all. Great head, smooth neck, angular in design and explosive flank along with superior muscle shape.



HF Ms Empire 53M

84 HF MS CROWN GUARDIAN 53M2

Born: 10/22/24 UB10571307 Gen: 3 PHN: 53M2 From Hatchee Farms

SUHN'S TRIPLE CROWN 416J39
UB10490384

CB MASTERPIECE 2051F

SUHN'S TRAIL BOSS 30B3
A CROSS RITA A2051
GDAR LEUPOLD 298
SUHN'S MISS CHISHOLM 416C46
CSONKA OF BRINKS 30R4
MISS 4L BEST BET 9U8P5
S A F CONNECTION
B3R R214 LADY M048 M195

SCC MISS GUARDIAN 53C12
UB10318856

SUHN'S MISS LEUPOLD 416E48

CRC GUARDIAN 9U8U5

B3R T053 LADY 0097 R214

Summary of Key Performance Indicators															
BW		WW			YW		REA		FT		IMF				
68 (98%)		536 (105%)													
CED	BW	WW	YW	M	TM	CEM	SC	REA	IMF	FT	Hfr Prg	Stay	Cow Wt	TI	FI
8.7	-1.3	34	54	8	25	4.51	1.16	0.4	0.5	0.014	8.3	3.22	6.32	3.69	4.8
10%	15%	10%	20%	60%	20%	25%	4%	15%	3%	80%	10%	10%	85%	4%	20%

This outstanding heifer has 15 traits in the top 25% of the breed. She is sired by Triple Crown. Look at the spread from BW to WW. She is gentle and an easy keeper. This lot has plenty of appeal.



HF Ms Crown Guardian 53M2

OPEN HEIFERS

85 LP MS CROSSROADS 56M2

Born: 11/3/24 R10575871 Gen: 6 PHN: 56M2 From Las Palomas Ranch

DMR CROSSROADS 795F7
R10416850

LP NEW VISION 56H
R10461579

BWCC CROSS FIT 541B28

MS DMR CORONADO 795C5

NEW VISION OF SALACOA 209Y2

CLVR-ESTRADA MS BUSINESS LINE 56F4

MC CROSSEVER 834Y

MC MS LUCIA 541U

TJM CORONADO 535X

MS DMR JETHRO 795Y2

LAMBERT OF BRINKS 317R3

MS BRINKS BRIGHT SIDE 209L1

SUHN'S BUSINESS LINE 30D26

ESTRADA MS CSONKA 56A2

EXPERIMENTAL SUMMARY															
BW		WW				YW		REA		FT		IMF			
91 (108%)		598 (96%)													
CED	BW	WW	YW	M	TM	CEM	SC	REA	IMF	FT	Hfr Prg	Stay	Cow Wt	TI	FI
1.4	2.2	24	51	-5	6	2.8	0.8	0.28	0.13	-0.003	1.34	0.86	-11.83	2.15	3.02
90%	95%	35%	25%	>95%	>95%	80%	20%	30%	35%	30%	70%	85%	10%	35%	75%

Crossroads daughter with 8 EPD traits in the breed's top 35% or better, including top 25% YW, 30% REA and 35% WW and IMF.



LP Ms Crossroads 56M2

86 LP MS ACCOMPLISHMENT 99M10

Born: 10/9/24 UB10569745 Gen: 1 PHN: 99M10 From Las Palomas Ranch

WW ACCOMPLISHMENT 535J43
UB10495712

CLVR MS BEACON 99H6
R10437929

SITZ ACCOMPLISHMENT 720F

MS DMR CORONADO 535A8

SUHN'S MAJESTIK BEACON 30C

CLVR MS NEW CONCEPT 99A2

POSS ACHIEVEMENT

SITZ BARBARAMERE NELL 166D

TJM CORONADO 535X

SVF MS 535M31

TJM THREE D 302A

SCC MISS MYTTY 30Z5

SUHN'S NEW CONCEPT 30Y24

SVF MS 99P21

SW 100 2021															
BW		WW		YW		REA		FT		IMF					
71 (91%)															
CED	BW	WW	YW	M	TM	CEM	SC	REA	IMF	FT	Hfr Prg	Stay	Cow Wt	TI	FI
7.6	-1.5	30	57	6	21	2.41	0.42	0.42	0.21	0.028	5.22	2.53	1.09	3.05	3.86
20%	15%	20%	15%	80%	35%	90%	45%	15%	25%	95%	30%	25%	65%	15%	45%

Accomplishment daughter with 14 EPD traits in the breed's top 45% or better, including top 15% BW, YW and REA and 20% CED and WW.



LP Ms Accomplishment 99M10

87 LP MS CROSSROADS 99M60

Born: 8/25/24 R10582444 Gen: 6 PHN: 99M60 From Las Palomas Ranch

DMR CROSSROADS 795F7
R10416850

101 MS PATTON 99X9
R10195442

BWCC CROSS FIT 541B28

MS DMR CORONADO 795C5

PATTON OF BRINKS 30T22

MS BRINKS NIMITZ 99P52

MC CROSSEVER 834Y

MC MS LUCIA 541U

TJM CORONADO 535X

MS DMR JETHRO 795Y2

CSONKA OF BRINKS 30R4

MS BRINKS ALI 30P26

NIMITZ OF BRINKS 75L12

MS BRINKS ALI 99M39

MS DRINKS ALL 99/03/97																
BW		WW				YW		REA		FT			IMF			
CED	BW	WW	YW	M	TM	CEM	SC	REA	IMF	FT	Hfr	Prg	Stay	CowWt	TI	FI
1.4	1.6	22	43	0	11	2.9	0.52	0.14	0.23	0	2.18	0.58	-1.99	2.06	2.03	
90%	85%	40%	40%	>95%	90%	80%	40%	55%	20%	45%	60%	90%	50%	35%	95%	

Another Crossroads daughter with Patton on the bottom side of her pedigree. She has 7 EPD traits breed average or better, including top 20% IMF and 40% WW, YW and SC.



LP Ms Crossroads 99M60

OPEN HEIFERS

88

HF MS STATEMENT 107M

Born: 10/19/24 R10571304 Gen:1 PHN: 107M From Hatchee Farms

ACE OF SPADES 406J
UB10476024

NEVER SURRENDER OF SALACOA 803D9 MC BOULDER 889Z14
MS BRINKS LOMBARDI 803S25
MS SALACOA CARCASS DSN 406E TTR CARCASS DESIGN
TTR A5051 U0286 X6200
BWCC STATEMENT 036Z MC REDEMPTION 192W22
MS IRON FARM 2K4 036U
DS MS STATEMENT 107D6 TRACKER OF BRINKS 541M8
R10322789 DS MS LILLY 107S 5 CC MS JOSETTE 107P

S CENS JOSEPH 10%															
BW		WW			YW			REA		FT		IMF			
61 (88%)		536 (105%)													
CED	BW	WW	YW	M	TM	CEM	SC	REA	IMF	FT	Hfr Prq	Stay	Cow Wt	TI	FI
3.1	1.6	45	74	9	31	2.72	0.73	0.43	0.2	0.012	4.09	2.35	-0.87	3.61	4.29
75%	85%	1%	2%	50%	5%	80%	25%	15%	25%	75%	40%	30%	55%	5%	30%

This AI-sired heifer by Ace of Spades was a twin and weaned at 532 lbs. She has 11 traits in the top 30% of the breed. She combines breed-leading WW and YW with excellent carcass values.



HF Ms Statement 107M

89

MS BIG TOWN

Born: 6/18/24 R10573331 Gen:3 PHN: 129M From Rayburn Brothers Farm

LF TRADEMARK 23K
R10515085

MR LOF TRADEMARK 517E MC TRADEMARK 30X3
MISS LOF 220
CJB MS23G OAKS LEGACY 392D13
QCB MS 23X2
MB CLIFTON 75F MB CLIFTON 541C3
MB MS HOLLYWOOD 75D4
BWCC BIG TOWN 192B16
MB MS PASSPORT 129D12

MDS TEST ON TESTE															
BW		WW			YW		REA		FT		IMF				
59 (100%)		579 (100%)													
CED	BW	WW	YW	M	TM	CEM	SC	REA	IMF	FT	Hfr Prg	Stay	Cow Wt	TI	FI
6.7	-0.6	26	54	10	23	3.08	0.66	0.41	0.14	0.017	6.62	2.52	0.6	2.78	4.14
25%	30%	25%	20%	40%	30%	70%	30%	15%	35%	85%	20%	25%	65%	15%	35%

Here is a really nice heifer with a gentle disposition. Her EPDs rank her in the top 30% for Birth Weight and top 25% for Weaning Weight. She is an open heifer.



Ms Big Town

90

3S MISS CASH FLOW 188M

Born: 10/26/24 R10575808 Gen:1 PHN: 188M From 3S Cattle Farms

TTT CASH FLOW 415K129
UB10526595

DMR CASH FLOW 535F30 S A V RESOURCE 1441
MS DMR CORONADO 535A8
MS DMR BEACON 415E133 SUHN'S MAJESTIK BEACON 30C
MS DMR CORONADO 415A7
ABF TOP GUN 468G2 DMR EL DORADO 30B15
MS DMR GUARDIAN 468C7
QCB MS CSONKA 188Y14 CSNKA OF BRINKS 30R4
QCB MS188R

QCB M3 Tool															
BW		WW				YW		REA		FT		IMF			
61 (90%)		566 (100%)													
CED	BW	WW	YW	M	TM	CEM	SC	REA	IMF	FT	Hfr Prg	Stay	Cow Wt	TI	FI
7.9	-1.7	23	44	4	16	3.6	0.46	0.39	0.15	0.011	8.05	3.32	1.45	2.4	5.04
15%	10%	35%	35%	90%	65%	55%	45%	20%	30%	75%	10%	10%	70%	25%	15%

Off of a TTT Cash Flow son and Addison's 188J cow, 3S wasn't messing around when they planned this mating. She's a low birth weight heifer with excellent, balanced EPDs. A promising addition for any cattleman.



3S Miss Cash Flow 188M

OPEN HEIFERS

91 MISS HCB CASHFLOW 188M3

Born: 10/25/24 R10570742 Gen:1 PHN: 188M3 From Hurricane Creek Brangus

ABF CASH FLOW 23K7
UB10514078

DMR CASH FLOW 535F30

S A V RESOURCE 1441
MS DMR CORONADO 535A8
CB FINAL CUT 924X
ABF MS CSONKA 23D4
DMR EMPIRE 795D12
MS DMR CHAIRMAN 30C2
DMR DEFENDER 594A20
ABF MS REVELATION 188B1

BCC MS DYNAMIC 188K3
R10515350

ABF MS FINAL CUT 23F5

DMR JRT DYNAMIC 30G36

ABF MS DEFENDER 188D3

BW		WW			YW		REA		FT		IMF					
72 (99%)		541 (100%)														
CED	BW	WW	YW	M	TM	CEM	SC	REA	IMF	FT	Hfr	Prg	Stay	Cow Wt	TI	FI
5	0	37	63	5	23	2.91	0.41	0.4	0.18	0.01	7.73	3.28	4.35	3.15	4.87	
50%	45%	5%	10%	85%	30%	75%	50%	15%	25%	75%	10%	10%	80%	10%	15%	

This yearling heifer will be a great addition to any herd. She has a feminine look with a calm disposition and carries 10 traits in the top 25% of the breed, including 10% for WW & BW.



Miss HCB Cashflow 188M3

92 LP MS CROSSROADS 209M7

Born: 9/8/24 R10582479 Gen:6 PHN: 209M7 From Las Palomas Ranch

DMR CROSSROADS 795F7
R10416850

BWCC CROSS FIT 541B28

MC CROSSOVER 834Y
MC MS LUCIA 541U
TJM CORONADO 535X
MS DMR JETHRO 795Y2
LAMBERT OF BRINKS 317R3
MS SVF CADENCE 488X11
BRIGHT SIDE OF BRINKS 789G5
MISS BRINKS NEWSDAY 209G9

MS SALACOA ATLANTA 209B12
R10290380

MS DMR CORONADO 795C5

ATLANTA OF SALACOA 488Z

CCC MS. BS 789G5 209W22

IMF DRINKS NEWSPRINT 2015															
BW		WW				YW		REA		FT		IMF			
CED	BW	WW	YW	M	TM	CEM	SC	REA	IMF	FT	Hfr Prg	Stay	Cow Wt	TI	F05
3.8	0.7	24	50	-1	10	3.1	0.3	0.28	0.28	0.007	1.34	0.81	0.31	2.6	2.05
70%	65%	35%	25%	>95%	90%	70%	65%	30%	15%	65%	70%	85%	60%	20%	95%

The third of these open Crossroads daughters from Las Palomas. She has Atlanta on the bottom side of her pedigree. She has 5 EPD traits in the breed's top 35% or better, including top 25% YW, 30% REA and 35% WW.



LP Ms Crossroads 209M7

93 RLJ MISS RIVER CAT 233M2

Born: 11/20/24 R10569162 Gen:1 PHN: 233M2 From RL Johnson Farms

RLJ ATLANTA'S BIG CAT 541G
UB10413130

MC BIG CAT 6726D8

BWCC CROSS FIT 541B28
SOUTHERN BLACKCAP 6726
ATLANTA OF SALACOA 488Z
CCC MS. GRIESE 541U48
MC NUFF SAID 889T50
BWCC MS REVELATION 192W8
CSONKA OF BRINKS 30R4
LC MISS DUKE 233-J2

MS. RB BIG TOWN 233E2
R10343386

TBF MS ATLANTA 541D11

BWCC BIG TOWN 192B16

MS RB CSONKA 233T1

LC MISS DOKE 235-92																
BW			WW			YW			REA		FT		IMF			
70 (115%)			717 (112%)													
CED	BW	WW	YW	M	TM	CEM	SC	REA	IMF	FT	Hfr	Prg	Stay	Cow Wt	TI	FI
3.8	1.3	46	72	9	33	3.73	0.98	0.55	0.24	0	8.14	2.55	-4.86	3.76	4.78	
70%	80%	1%	2%	50%	3%	50%	10%	5%	20%	45%	10%	25%	35%	4%	20%	

Offered for your consideration. 15 EPDs in the top 50% of the breed. Top 1% weaning weight and top 2% yearling weight.



RLJ Atlanta's Big Cat 541G • Sire of Lots 75, 76, 93

OPEN HEIFERS

94 ABF MS EMPOWER 263M

Born: 9/3/24 R10570476 Gen: 5 PHN: 263M From Addison Brangus Farms

QVF PR EMPOWER 30G16
R10412716

MS BC 23F88 263J17
R10468872

NEVER SURRENDER OF SALACOA 803D9 MC BOULDER 889Z14
MS BRINKS LOMBARDI 803S25
T3 MS THREE D 30D TJM THREE D 302A
MS SALACOA ATLANTA 30B5
SALACOA STRATEGY 23F88 DMR STRATEGY 263C6
MS SALACOA AMERICUS 23C68
MS BC LA PURCHASE 263G13 DMR LOUISIANA PURCHASE 924D10
MS BC ROLLTIDE 263C11

BW			WW			YW			REA		FT		IMF		
72 (101%)			530 (90%)			863 (96%)									
CED	BW	WW	YW	M	TM	CEM	SC	REA	IMF	FT	Hfr Prg	Stay	Cow Wt	TI	FI
5.2	0.7	27	55	4	17	3.46	0.69	0.36	0.05	0.011	6.04	2.42	-0.25	2.35	4.07
50%	65%	25%	15%	90%	60%	60%	25%	20%	55%	75%	20%	30%	60%	25%	35%

Empower has done a great job for us at Addison Brangus Farms and this heifer is no exception. Ms Empower has 9 EPD traits in the breed's top 35% or better, including top 15% YW, 20% REA and 25% WW. Her dam 263J17 is a nice cow that is proving to be one of our top brood cows that walks the pastures at Addison Brangus. She has a 324-day CI on her 2 babies. 263M sells open.



ABF Ms Empower 263M

95 PKC MS BENNETT EMPIRE

Born: 4/19/24 R10552164 Gen: 1 PHN: 406M11 From Pine Knot Cattle Co.

ABF EMPIRE 415J2
UB10475167

ELC MS REAL DEAL 406Z
R10222747

DMR EMPIRE 795D12 TJM THREE D 302A
MS DMR JETHRO 795Y2
MS DMR CAPITALIST 415D CONNEALY CAPITALIST 028
MS BRINKS BRIGHT SIDE 415R23
MC REAL DEAL 541R3 TJM JOHN WAYNE 44L
ELC MS LEAD GUN 406T2 MB MS FREIGHT LINER 541K
LEAD GUN OF BRINKS 222K14
CJF MS TRACKER 406R2

BW			WW			YW			REA		FT		IMF		
76 (93%)			440 (88%)			576 (82%)									
CED	BW	WW	YW	M	TM	CEM	SC	REA	IMF	FT	Hfr Prg	Stay	Cow Wt	TI	FI
8	-1.1	20	44	8	19	3.43	0.47	0.51	0.02	0.016	8.76	3.28	3.04	2.11	4.84
15%	20%	45%	35%	60%	50%	60%	45%	10%	65%	85%	10%	10%	75%	35%	15%

PKC Ms Bennett Empire is an April 2024 heifer that fell just outside our spring breeding window, leaving her open and ready to breed to the bull of your choice. Sired by an ABF Empire son and our 406Z Real Deal Daughter, one of our most productive donor cows, she combines a proven maternal line with calving ease and performance. She carries 10 traits in the breed's top 35% Ranking top 20% BW, top 15% CED, and top 10% REA. She offers the kind of balance and carcass value to make a long-term producer in your breeding program.



PKC Ms Bennett Empire

96 PKC MS BLUE BLOOD 406M14

Born: 7/19/24 R10564940 Gen: 1 PHN: 406M14 From Pine Knot Cattle Co.

MC BLUE BLOOD 129H18
UB10480215

ELC MS REAL DEAL 406Z
R10222747

BWCC BIG TOWN 192B16 MC NUFF SAID 889T50
BWCC MS REVELATION 192W8
MC MS RESOURCE 129A15 S A V RESOURCE 1441
MC MS GUNS 129Y327
MC REAL DEAL 541R3 TJM JOHN WAYNE 44L
ELC MS LEAD GUN 406T2 MB MS FREIGHT LINER 541K
LEAD GUN OF BRINKS 222K14
CJF MS TRACKER 406R2

OF HIS WATERFLOODE															
BW			WW			YW		REA		FT		IMF			
68 (100%)			515 (100%)												
CED	BW	WW	YW	M	TM	CEM	SC	REA	IMF	FT	Hfr Prg	Stay	Cow Wt	TI	FI
7.9	-1.6	35	68	12	30	1.94	0.77	0.75	0.24	0.014	9.72	3.34	3.22	3.92	5.01
15%	10%	10%	4%	25%	10%	95%	20%	1%	20%	80%	4%	10%	75%	3%	15%

This daughter of the powerhouse sire MC Blue Blood 129H18 is out of our cornerstone donor 406Z, making her a genetic package built for performance and longevity. She posts an elite set of EPDs ranking in the top 35% for 15 EPDs, led by top 4% YW, top 10% WW and TM, top 3% Heifer Pregnancy, top 3% Terminal Index, and #1% REA—a rare balance of growth, fertility, and carcass strength all in one female.



PKC Ms Blue Blood 406M14

OPEN HEIFERS

97 PKC MS BLUE BLOOD 406M15

Born: 7/24/24 R10564941 Gen: 1 PHN: 406M15 From Pine Knot Cattle Co.

MC BLUE BLOOD 129H18
UB10480215

ELC MS REAL DEAL 406Z
R10222747

BWCC BIG TOWN 192B16

MC MS RESOURCE 129A15

MC REAL DEAL 541R3

ELC MS LEAD GUN 406T2

MC NUFF SAID 889T50
BWCC MS REVELATION 192W
S A V RESOURCE 1441
MC MS GUNS 129Y327
TJM JOHN WAYNE 44L
MB MS FREIGHT LINER 541K
LEAD GUN OF BRINKS 222K14
CJF MS TRACKER 406R2

OF MS TRACKER 400RZ															
BW		WW			YW			REA		FT		IMF			
52 (100%)		519 (100%)													
CED	BW	WW	YW	M	TM	CEM	SC	REA	IMF	FT	Hfr Prg	Stay	Cow Wt	TI	FI
8.2	-1.6	35	68	12	30	1.94	0.77	0.75	0.24	0.014	9.72	3.34	3.22	3.92	5.01
15%	10%	10%	4%	25%	10%	95%	20%	1%	20%	80%	4%	10%	75%	3%	15%

PKC Ms Blue Blood 406M15 is another impressive daughter of MC Blue Blood 129H18 and our proven donor 406Z. This July 2024 heifer comes with the same elite look and performance as her sister. Ranking top 4% YW, top 10% WW and TM, top 3% Heifer Pregnancy, top 3% Terminal Index, and #1% REA, she blends growth, carcass, and fertility in a rare package.



PKC Ms Blue Blood 406M15

98 3S MISS EPIC 436M2

Born: 11/3/24 UB10575812 Gen: 1 PHN: 436M2 From 3S Cattle Farms

3S EPIC 535K
UB10529161

MS TTT WINDFALL 436K5
R10526596

SF EPIC 535G74

SF MISS ABSTRACT 535H64

DMR WINDFALL 535H13

CNF MISS UB JAN 436C2

SUHN'S EPIC 331D16
SF MISS CONSENSUS 535Z3
VOREL ABSTRACT 25E9
SF MISS MACK 535C4
TJM THREE D 302A
MS DMR CORONADO 535A8
BRINKS ROBERTSON 406U5
CNF MISS UB JAN 436U3

CM 1155 65 JAR 1985															
BW		WW			YW		REA		FT		IMF				
67 (103%)		628 (100%)													
CED	BW	WW	YW	M	TM	CEM	SC	REA	IMF	FT	Hfr Prg	Stay	Cow Wt	TI	FI
4.7	0.2	30	57	10	26	2.71	0.52	0.4	0.2	0.016	6.86	3.11	2.62	2.95	4.83
55%	50%	20%	15%	40%	15%	80%	40%	15%	25%	85%	15%	15%	75%	15%	15%

An Epic x Windfall cross with 9 traits in the top 25%, this heifer is sired by the full brother to Lot 124. Her granddam is the CNF 436C2 donor cow. Put her in with a Brangus bull and this UB2 will give you great Brangus progeny.



3S Miss Epic 436M2

99 VF MS CHISELED 468M3

Born: 3/8/24 R10570418 Gen: 2 PHN: 468M3 From Vanna Farms

BWCC CHISELED 468G58
R10434380

VF MS MONUMENT 468G4
R10416200

BWCC CROSS FIT 541B28

BWCC MS STATEMENT 468B32

BWCC MONUMENT 10D7

BWCC MS STATEMENT 468B32

MC CROSSOVER 834Y
MC MS LUCIA 541U
BWCC STATEMENT 036Z
BWCC MS ROCK STAR 468Y14
MC BOULDER 889Z14
BWCC MS RESOURCE 10A10
BWCC STATEMENT 036Z
BWCC MS ROCK STAR 468Y14

DWCE W5 ROCK STAR 406114

BW		WW			YW			REA		FT		IMF			
71 (103%)		385 (75%)			599 (79%)			7.37 (83%)		0.19 (79%)		3.22 (79%)			
CED	BW	WW	YW	M	TM	CEM	SC	REA	IMF	FT	Hfr Prg	Stay	Cow Wt	TI	FI
0.7	2.3	16	32	0	9	2.66	1.07	0.18	0.11	0.012	5.42	2.53	4.09	1.23	4.04
95%	95%	60%	65%	>95%	95%	85%	5%	45%	40%	75%	25%	25%	80%	70%	40%

A stylish, performance-driven female sired by BWCC Chiseled 468G58, who traces back to the elite BWCC Ms Statement 468B32—one of the most consistent and powerfully built donor females of the breed. Her dam, VF Ms Monument 468G4, is backed by the productive 468 cow family and goes back to the impressive donor BWCC Ms Resource 468Y14, known for transmitting power, mass, maternal function, and longevity. This female is long-bodied, deep-sided, and carries a clean, feminine look with added shape and dimension. Confirmed open on 8/6/25—ready to breed this fall to the sire of your choice.



BWCC Ms Rock Star 468Y14

OPEN HEIFER



ABF Ms Growth Fund 468M7



Ms DMR Guardian 468C7



CB Growth Fund 2051G11

100 ABF MS GROWTH FUND 468M7

Born: 8/27/24 UB10570474 Gen: 1 PHN: 468M7

From Addison Brangus Farms

CB GROWTH FUND 2051G11
UB10418754

CB CAPITAL GAIN 924D19

A CROSS RITA A2051

CRC GUARDIAN 9U8U5

MS DMR GUARDIAN 468C7
R10296914

MS BRINKS NEW ERA 468P14

TJM THREE D 302A
CB MS HOMBRE 924Z11
CONNEALY CONSENSUS 7229
J & J OT26 RITA 48T
CSOKA OF BRINKS 30R4
MISS 4L BEST BET 9U8P5
NEW ERA OF BRINKS 541J37
MISS BRINKS CADENCE 468G15

BW	WW	YW	REA	FT	IMF
63 (100%)	652 (100%)	960 (100%)			
CED	BW	WW	YW	M	TM
5.8	-1.6	23	46	11	23
40%	10%	35%	30%	30%	30%
CEM	SC	REA	IMF	FT	Hfr Prq
6.61	0.75	0.37	0.12	-0.001	7.78
1%	20%	20%	35%	40%	10%
Stay	Cow Wt	TI	FI		
4.18	13.73	2.55	6.22		
2%	>95%	20%	2%		

Our 468C7 donor has outdone herself on this calf. In my opinion, this Growth Fund daughter is phenotypically and numerically superior! Ms Growth Fund has an unmatched set of EPDs with 16 traits in the breed's top 40% or better, including top 10% BW, Heifer Preg, 20% REA and SC and 30% YW, Milk and TM, just to mention a few. Starting out with a 63-pound BW, Ms Growth Fund grew to 652 pounds at weaning and 960 pounds at yearling. Ms Growth Fund's dam (468C7) is a big embryo producer. We are hoping that this attractive Growth Fund daughter will carry on the embryo production ability of her dam. She sells open.

OPEN HEIFERS

101 CCCC MS KINGDOM 530M

Born: 4/22/24 UB10578982 Gen:1 PHN: 530M

From Crooked Creek Cattle Co.

DMR KINGDOM 535G45
R10434685

DMR EMPIRE 795D12

MS DMR CORONADO 535A8

SFCC TRM STELLAR 9189

CN MS COMMANDER 263G4

TJM THREE D 302A
MS DMR JETHRO 795Y2
TJM CORONADO 535X
SVF MS 535M31
SITZ STELLAR 726D
DECADES LADY 1316
COMMANDER 406B20
CN MS FOUNDATION 263D2

BW			WW			YW			REA			FT			IMF		
78 (106%)			610 (100%)			920 (100%)			9.71 (100%)			0.36 (100%)			2.48 (100%)		
CED	BW	WW	YW	M	TM	CEM	SC	REA	IMF	FT	Hfr	Prg	Stay	Cow Wt	TI	FI	
7.7	-1.1	26	43	5	19	3.06	0.33	0.27	0.13	0.025	6.41	2.5	-0.7	2.14	3.82		
15%	20%	25%	40%	85%	50%	75%	60%	35%	35%	95%	20%	25%	55%	35%	45%		

A true brood cow in the making and as gentle as they come. With a top 20% on CED and BW and a top 25% on WW. This open heifer would make a great addition to any herd. **They buyer will receive one straw of Suhn's Triple Crown 416J39 semen. Available sale day.**



DMR Kingdom 535G45 • Sire of Lots 71, 101

102 MISS HCB CASHFLOW 535M2

Born: 12/15/24 R10590054 Gen:1 PHN: 535M2

From Hurricane Creek Brangus

ABF CASH FLOW 23K7
UB10514078

DMR CASH FLOW 535F30

ABF MS FINAL CUT 23F5

MB THREE D 129D40

BBR MS LEAD GUN 535E

S A V RESOURCE 1441
MS DMR CORONADO 535A8
CB FINAL CUT 924X
ABF MS CSONKA 23D4
TJM THREE D 302A
MB MS INFOCUS 129X14
MC LEAD GUN 20W
GH MS AFFIRMED 535B

BW			WW			YW			REA		FT		IMF		
75 (103%)			593 (100%)												
CED	BW	WW	YW	M	TM	CEM	SC	REA	IMF	FT	Hfr Prg	Stay	Cow Wt	TI	FI
3.7	0.4	34	59	5	22	2.98	0.19	0.42	0.24	0.008	6.57	2.98	8.32	3.11	4.38
70%	55%	10%	10%	85%	35%	75%	75%	15%	20%	70%	20%	15%	90%	10%	30%

This young heifer boasts 8 traits in the top 20% of the breed, with WW & BW coming in at 10%.



Miss HCB Cashflow 535M2

103 3G MS ENTOURAGE 607M

Born: 8/30/24 R10573050 Gen:1 PHN: 607M

From 3G Cattle

SF ENTOURAGE 40G50
UB10443350

SUHN'S EPIC 331D16

SF MISS LTD 40Z25

SUHN'S MAJESTIK BEACON 30C

MS LAKE MAJESTIK MLLHSE 607C

S A V RESOURCE 1441
SUHN'S MISS LTD 331X18
LTD OF BRINKS 415T28
SF MISS NEXT STEP 40W5
TJM THREE D 302A
SCC MISS MYTTY 30Z5
MILLHOUSE OF MAJESTIK 331Z24
MS BRINKS GD FORTUNE 607R44

BW			WW			YW			REA		FT		IMF			
64 (100%)			466 (100%)			853 (100%)										
CED	BW	WW	YW	M	TM	CEM	SC	REA	IMF	FT	Hfr	Prg	Stay	Cow Wt	TI	FI
6.3	0.4	36	66	7	25	2.9	0.72	0.44	0.17	0.01	6.41	2.49	1.39	3.25	4.17	
30%	55%	10%	5%	70%	20%	80%	25%	15%	30%	75%	20%	25%	70%	10%	35%	

3G Cattle is excited to offer 607M. Her sire is the \$35,000 Entourage and her dam is the \$10,000 607H4 donor we purchased with Sunshine Acres. She ties together some of the top animals in the breed, including Epic, LTD, Beacon and Millhouse. Entourage sired the \$34,000 bull Encore, owned by CJC Farms and Lake Majestik. 607H4 is an exciting donor we have used in several matings in our herd along with Sunshine Acres. She has active progeny in multiple herds, including Australia. 607M blends the best traits of her sire and dam in an easy-fleshing, moderate package with an exciting set of EPDs. This beautiful female will be the front pasture type and will work on a variety of pedigrees. We know she's got a big future!



3G Ms Entourage 607M

OPEN HEIFERS

104 3S MISS EPIC 924M

Born: 11/18/24 UB10575835 Gen:1 PHN: 924M

From 3S Cattle Farms

3S EPIC 535K
UB10529161

SF EPIC 535G74

SUHN'S EPIC 331D16
SF MISS CONSENSUS35Z3

SF MISS ABSTRACT 535H64

VOREL ABSTRACT 25E9

DMR WINDFALL 535H13

SF MISS MACK 535C4

MS TTT WINDFALL 924K4
R10526550

CB MS HOMBRE 924Z11

TJM THREE D 302A

MS DMR CORONADO 535A8

CB HOMBRE 541T3

RBM MS GUNS 924T3

BW		WW		YW		REA		FT		IMF					
77 (100%)		582 (100%)													
CED	BW	WW	YW	M	TM	CEM	SC	REA	IMF	FT	Hfr Prg	Stay	Cow Wt	TI	FI
4.4	-0.1	30	55	8	23	1.81	0.15	0.38	0.12	0.013	7.7	3.36	3.95	2.71	4.98
60%	40%	20%	15%	60%	30%	95%	80%	20%	35%	80%	10%	80%	10%	80%	15%

With 9 traits in the top 35% and a pedigree that speaks for itself, this heifer has a promising future ahead. She is the product of an Epic on Windfall mating and is sired by the full brother of Lot 124.



3S Miss Epic 924M

105 ABF MS BLACKSTONE 1912M2

Born: 9/24/24 R10570467 Gen:1 PHN: 1912M2

From Addison Brangus Farms

ABF BLACKSTONE 23G2
R10410461

BWCC MONUMENT 10D7

MC BOULDER 889Z14
BWCC MS RESOURCE 10A10

QCB MS NUFF SAID 23Z13

MC NUFF SAID 889T50

CB CAPITAL GAIN 924D19

SVF MS LEADGUN 23S85

MS WW CAPITAL GAIN 1912J2
UB10495670

COLD CREEK LADY PASSPORT 1912C

TJM THREE D 302A

CB MS HOMBRE 924Z11

CB PASSPORT 803Y11

R B LADY PARTY 1912-844

BW			WW			YW			REA		FT		IMF			
67 (94%)			604 (103%)			907 (101%)										
CED	BW	WW	YW	M	TM	CEM	SC	REA	IMF	FT	Hfr	Prg	Stay	Cow Wt	TI	FI
6.1	-1	29	49	7	21	3.1	0.77	0.31	0.25	0.026	8.39	2.44	-0.69	2.71	3.63	
35%	20%	20%	25%	70%	35%	70%	20%	25%	20%	95%	10%	25%	55%	20%	55%	

Ms Blackstone is a fancy, long-bodied heifer out of 1912J2 that has a 378-day CI. Having Monument 10D7 as her grand sir and Lady Passport 1912C as her grandam, there should be some interest in this female just based on her pedigree. Ms Blackstone has 11 EPD traits in the breed's top 35% or better, including top 20% BW.



ABF Ms Blackstone 1912M2

106 3S MISS TRAIL BOSS 7521M2

Born: 9/8/24 R10575838 Gen:1 PHN: 7521M2

From 3S Cattle Farms

SUHN'S TRAIL BOSS 30B3
R10270677

SUHN'S AUGUSTUS 416Y14

CRC GUARDIAN 9U8U5
SUHN'S MS NEXT STEP 416W30

SUHN'S MISS PATTON 30X5

PATTON OF BRINKS 30T22

TJM THREE D 302A

SUHN'S MS DUKE 30M

SF MISS THREE D 7521D
UB10321161

CB MS NEW CONCEPT 7521B2

CB FINAL CUT 924X

OAKS MS PATTON 302X3

SUHN'S NEW CONCEPT 30Y24

SBP BLACKCAP 7521

SUSSEX 75E																
BW			WW			YW		REA			FT		IMF			
73 (100%)			667 (100%)													
CED	BW	WW	YW	M	TM	CEM	SC	REA	IMF	FT	Hfr	Prg	Stay	CowWt	TI	FI
5.6	0.3	40	65	5	25	3.07	1.4	0.38	0.13	0.009	6.23	3.23	6.93	3.06	5.08	
40%	55%	3%	10%	85%	20%	70%	1%	20%	35%	70%	20%	10%	90%	10%	10%	

This heifer is a Trail Boss daughter out of Randy Schmidt's 7521D donor cow. Not only is she easy on the eyes, but she backs it up with a stacked EPD profile. She carries 9 traits in the top 20%, with a top 1% SC rating. Her adjusted weaning weight of 667 lbs lends to her moderate birth weight and high growth potential.



3S Miss Trail Boss 7521M2

EMBRYO LOTS FROM JRT BRANGUS

109 DMR JRT DYNAMIC 30G36 x MS TTT CASH FLOW 415K6

DMR JRT DYNAMIC 30G36
R10434661

TJM THREE D 302A

MS DMR JETHRO 795Y2

MS TTT CASH FLOW 415K6
UB10526558

DMR CASH FLOW 535F30

MS DMR BEACON 415E133

CED	BW	WW	YW	M	TM	CEM	SC	REA	IMF	FT	Hfr Prg	Stay	CowWt	TI	FI
6.4	0	34	53	1	18	2.87	0.8	0.48	-0.06	0.037	8.71	2.7	-0.77	2.06	3.59
35%	50%	15%	30%	95%	60%	75%	25%	15%	90%	95%	10%	25%	50%	45%	60%

CED	BW	WW	YW	M	TM	CEM	SC	REA	IMF	FT	Hfr Prg	Stay	CowWt	TI	FI
5.8	-0.5	39	69	1	21	2.61	0.45	0.43	0.15	0.015	8.4	3.29	-2.21	3.35	4.98
30%	30%	4%	4%	95%	35%	85%	50%	15%	30%	80%	10%	10%	50%	10%	15%

Ms TTT Cash Flow 415K6 is a powerful daughter out of the \$50,000 Ms DMR Beacon 415E133 daughter owned by our good friends at TTT Brangus Farms. She posts an impressive 12 EPDs in the top 30%. She's mated to the great Dynamic bull who died before his time. He's done an outstanding job on his progeny and these calves are impressive! Take advantage of these embryos because there is no more semen to sell. I will have the embryos at the sale, so bring your tank. JRT Brangus will guarantee 2 pregnancies if transferred within one year by a licensed technician.

Consigned by JRT Brangus

Selling (5) IVF Embryos.



DMR JRT Dynamic 30G36 • Sire of Embryo Lots 109, 111



Ms TTT Cash Flow 415K6 • Dam of Embryo Lot 109

110 DMR ADMIRAL 535K13 x JRT MS THREE D 468J3

DMR ADMIRAL 535K13
R10505245

NEVER SURRENDER OF SALACOA 803D9

MS DMR CORONADO 535A8

JRT MS THREE D 468J3
R10482878

TJM THREE D 302A

MS DMR GUARDIAN 468C7

CED	BW	WW	YW	M	TM	CEM	SC	REA	IMF	FT	Hfr Prg	Stay	CowWt	TI	FI
13.9	-3	33	63	6	23	3.02	-0.04	0.73	0.06	0.037	5.78	2.29	-5.09	3.28	3.48
1%	3%	20%	15%	75%	30%	70%	95%	2%	55%	95%	25%	30%	40%	15%	60%

CED	BW	WW	YW	M	TM	CEM	SC	REA	IMF	FT	Hfr Prg	Stay	CowWt	TI	FI
3.1	0.4	44	74	5	27	1.68	0.36	0.4	0.21	0.018	7.89	3.73	2.29	3.62	5.42
75%	55%	2%	2%	85%	15%	95%	60%	15%	25%	5%	10%	4%	70%	5%	10%

JRT Ms Three D 468J3 was purchased by our good friends at Cheney Farms 2 years back at this sale. She's an own daughter of the great 468C7 donor at Addison Brangus Farm. She posts 11 EPDs in the top 35%. The sire of these embryos is the exciting Admiral bull from Draggin' M Ranch. These calves are going to be exciting! JRT Brangus will guarantee 3 pregnancies if transferred by a licensed technician within one year of the sale. Embryos will be available for pickup at the sale.

Consigned by JRT Brangus

Selling (8) IVF Embryos



DMR Admiral 535K13 • Sire of Embryo Lot 110



JRT Ms Three D 468J3 • Dam of Embryo Lot 110

EMBRYO LOT FROM JRT BRANGUS



DMR JRT Dynamic 30G36 • Sire of Embryo Lots 109, 111



Sewell's Ms Cash Flow 468L22 • Dam of Embryo Lot 111

111 DMR JRT DYNAMIC 30G36 x SEWELLS MS CASH FLOW 468L22

DMR JRT DYNAMIC 30G36
R10434661

TJM THREE D 302A

MS DMR JETHRO 795Y2

SEWELLS MS CASH FLOW 468L22
UB10532700

DMR CASH FLOW 535F30

CB MS THREE D 468C9

CED	BW	WW	YW	M	TM	CEM	SC	REA	IMF	FT	Hfr Prq	Stay	Cow Wt	TI	FI
6.4	0	34	53	1	18	2.87	0.8	0.48	-0.06	0.037	8.71	2.7	-0.77	2.06	3.59
35%	50%	15%	30%	95%	60%	75%	25%	15%	90%	95%	10%	25%	50%	45%	60%

CED	BW	WW	YW	M	TM	CEM	SC	REA	IMF	FT	Hfr Prq	Stay	Cow Wt	TI	FI
5.8	-0.5	39	69	1	21	2.61	0.45	0.43	0.15	0.015	8.4	3.29	-2.21	3.35	4.98
30%	30%	4%	4%	95%	35%	85%	50%	15%	30%	80%	10%	10%	50%	10%	15%

Sewell's Ms Cash Flow 468L22 is an own daughter of the great CB MS Three D 468C9 out of the Cavender herd. She is a powerful daughter of Cash Flow who posted 11 EPDs in the top 25%. Big time growth and carcass mated to the Great Dynamic bull. Expect nothing but donor and herdsire prospects out of this mating! JRT Brangus will guarantee 3 pregnancies if transferred by a licensed technician within one year of the sale. Embryos will be available for pickup at the sale.

Consigned by JRT Brangus

Selling (8) IVF Embryos

EMBRYO LOTS FROM QUAIL VALLEY FARMS

112 DMR DUTTON 331H8 x ACE MS SHO TIME 10L25

DMR DUTTON 331H8
UB10462638

DMR CASH FLOW 535F30

MS DMR BEACON 331F8

ACE MS SHO TIME 10L25
R10554425

MC SOMETHING SPECIAL 129W14

ABF MS CSOKA 740Z13 23B2

CED	BW	WW	YW	M	TM	CEM	SC	REA	IMF	FT	Hfr Prq	Stay	Cow Wt	TI	FI
11	-3.1	46	74	3	26	1.7	0.91	0.56	0.13	0.026	8.45	3.22	-3.68	3.81	4.84
3%	3%	3%	5%	95%	20%	>95%	20%	10%	40%	90%	10%	10%	35%	10%	15%

CED	BW	WW	YW	M	TM	CEM	SC	REA	IMF	FT	Hfr Prq	Stay	Cow Wt	TI	FI
6.7	0.2	50	86	9	35	3.33	0.18	0.69	0.28	0.024	9.82	2.89	1.82	4.55	4.01
25%	50%	1%	1%	50%	2%	65%	75%	2%	15%	95%	3%	15%	70%	1%	40%

You will want to study the combination of genetics in this lot. The dam's numeric values are breed-leading in Growth, with plenty of Carcass. That is combined with the negative BW of Dutton, who also continues to exhibit plenty of Growth and Power. Donor 10L25 is a daughter of 10G17, who was responsible for over \$150,000 in progeny sales for us. Predictability, genetic advancement and superior EPD values are all represented in this lot.

Consigned by Quail Valley Farms

Selling five (5) embryos.



DMR Dutton 331H8 ~ Sire of Embryo Lot 112

113 GKB ALL IN OF ACE 313L x LM MS SIGNAL 70L9

GKB ALL IN OF ACE 313L
R10538907

BWCC CENTER SECTION 7F7

RBM MS SPECIAL FORCES 313A

LM MS SIGNAL 70L9
UB10544123

SUHN'S TTT LM SIGNAL 30E13

WO MS 70D1

CED	BW	WW	YW	M	TM	CEM	SC	REA	IMF	FT	Hfr Prq	Stay	Cow Wt	TI	FI
7.3	0.5	45	79	7	30	3.94	0.96	0.65	0.37	0.053	9.4	2.67	3.7	4.28	3.08
25%	65%	3%	3%	65%	10%	35%	15%	5%	15%	>95%	5%	25%	75%	4%	75%

CED	BW	WW	YW	M	TM	CEM	SC	REA	IMF	FT	Hfr Prq	Stay	Cow Wt	TI	FI
6.9	-1.1	32	56	9	26	3.74	0.58	0.47	-0.03	0.023	10.8	3.95	-0.04	2.47	5.62
25%	20%	15%	15%	50%	15%	50%	35%	10%	80%	95%	2%	2%	60%	25%	5%

This mating is a superior combination of eye appeal, leading-edge genetics and numeric dominance. 70L9 was one of those special females we purchased from Lake Majestik, as a heifer is the epitome of balanced EPDs and looks. We combined this with the \$210,000 All In that has been the talk of the breed since before he sold last fall. His numeric superiority, along with his look and appeal, combined with 70L9, has unlimited possibilities. As you know, All In semen is not available for sale, so why not purchase a designed genetic package such as this?

Consigned by Quail Valley Farms

Selling five (5) embryos.

EMBRYO LOT FROM CROOKED CREEK CATTLE COMPANY

114 SUHN'S BUSINESS LINE 30D26 x S A V BLACKCAP MAY 0654

SUHN'S BUSINESS LINE 30D26
R10327046

VF-OAKS ONLINE 918Y3
SUHN'S MISS NORTH STAR 30A

S A V BLACKCAP MAY 0654
EA19815835

MARCYS SCALE CRUSHER
S A V BLACKCAP MAY 457

CED	BW	WW	YW	M	TM	CEM	SC	REA	IMF	FT	Hfr Prg	Stay	Cow Wt	TI	FI
1.6	1.6	39	75	-3	16	2.07	1.88	0.67	0.14	-0.012	10.18	3.04	3.11	3.53	5.02
90%	90%	10%	4%	>95%	70%	95%	1%	4%	40%	10%	3%	15%	75%	15%	15%

CED	BW	WW	YW	M	TM	CEM	SC	REA	IMF	FT	Hfr Prg	Stay	Cow Wt	TI	FI
3.5	-0.9	21	40	3	14	1.81	0.69	0.31	0.3	0.018	2.28	2.33	1.12	2.44	4.06
75%	20%	45%	45%	95%	75%	95%	25%	25%	15%	85%	60%	30%	65%	25%	35%

Your chance to make your own. Offering your choice of 3 or 6 Conventional embryos that are full siblings to the heifer choice we just offered. We will guarantee 1 pregnancy per 3 embryos if put in by a certified technician within a year of sale. Embryos available sale day.

Consigned by Crooked Creek Cattle Company

Offering choice of 3 or 6 Conventional Embryos.



Suhn's Business Line 30D26 ~ Sire of Embryo Lot 114



S A V Blackcap May 0654 ~ Dam of Embryo Lot 114

EMBRYO LOT FROM RIVER VALLEY FARMS

115 BWCC CROSS FIT 541B28 x MS BRINKS LEAD GUN 468S64

BWCC CROSS FIT 541B28
R10293331

MC CROSSOVER 834Y
MC MS LUCIA 541U

MS BRINKS LEAD GUN 468S64
R10056773

LEAD GUN OF BRINKS 222K14
MS BRINKS UPPER CUT 468N

CED	BW	WW	YW	M	TM	CEM	SC	REA	IMF	FT	Hfr Prg	Stay	Cow Wt	TI	FI
1.2	3.1	45	65	-10	12	4.12	1.63	0.4	0.46	0	0.03	0.86	-2.72	3.49	2.66
95%	>95%	3%	15%	>95%	90%	30%	2%	25%	10%	35%	85%	85%	40%	15%	90%

CED	BW	WW	YW	M	TM	CEM	SC	REA	IMF	FT	Hfr Prg	Stay	Cow Wt	TI	FI
.2	-2.9	12	38	3	9	4.81	-0.03	0.47	0.27	0.002	6.73	2.96	-0.41	2.6	4.8
10%	2%	75%	50%	95%	95%	15%	95%	10%	15%	50%	15%	15%	60%	20%	20%

Ms Brinks Lead Gun 468S64, a daughter of Lead Gun 222K14 and granddaughter of the Upper Cut bull. This donor boasts 10 traits in the top 20% with CED and REA being top 10% and holding IMF and Heifer Preg at 15%. All with having a -2.9 on BW with this match up, it should be exciting to see this cross.

Consigned by River Valley Farms

Selling three (3) embryos.



BWCC Cross Fit 541B28 ~ Sire of Embryo Lot 115



Ms Brinks Lead Gun 468S64 ~ Dam of Embryo Lot 115

EMBRYO LOT FROM RIVER VALLEY FARMS

116 BWCC BIG LAKE 111F4 x MS SALACOA ATLANTA 535B25

BWCC BIG LAKE 111F4
UB10399796

BWCC CROSS FIT 541B28

BWCC MS ROCK SOLID 111C6

MS SALACOA ATLANTA 535B25
R10273281

ATLANTA OF SALACOA 488Z

OAKS MS CSONKA 535X2

CED	BW	WW	YW	M	TM	CEM	SC	REA	IMF	FT	Hfr	Prg	Stay	Cow Wt	TI	FI
3.1	1.5	56	83	-1	27	4.03	1.77	0.48	0.78	0.024	11.2	2.58	4.19	5.25	3.4	
80%	85%	1%	2%	>95%	15%	35%	1%	15%	1%	90%	2%	30%	75%	1%	65%	

CED	BW	WW	YW	M	TM	CEM	SC	REA	IMF	FT	Hfr	Prg	Stay	Cow Wt	TI	FI
4.1	-0.1	28	50	11	25	3.01	0.2	0.54	0.24	-0.006	6.35	2.49	-6.74	3	4.97	
65%	40%	20%	25%	30%	20%	75%	75%	5%	20%	20%	20%	25%	25%	15%	15%	

Daughter of one of the most significant bulls from SVF, Salacoa Atlanta 488Z, he was considered one of the greatest bulls of his time. She writes 8 traits in the top 20%, with WW & YW holding at 20% & 25% all while holding a REA of 0.54. This should be a very powerful cross. We have a daughter from this mating we retained in our herd that is soggy and very well put together. She may see the donor pen in the future. Don't miss out here.

Consigned by River Valley Farms

Selling three (3) embryos.



BWCC Big Lake 111F4 ~ Sire of Embryo Lot 116



Atlanta of Salacoa 488Z ~ Sire of Lot 116 Embryo Dam

EMBRYO LOTS FROM ADDISON BRANGUS FARMS



MC Sho Time 313H30 ~ Sire of Embryo Lots 117-120

Sho Time offspring (such as MC Sho Me The Money 889K89) have been selling very well in registered Brangus sales across the Southeast and Texas. Sho Time is in the breed's top 1% for WW and YW and still has a top 20% CED. Here is an opportunity to have Sho Time genetics mated with four different ABF donors.

- **23F9**, as most of you know, produces fancy, feminine heifers and sharp-looking bulls.
- **468C7** always has good offspring in our sales. This year, she has 3 ET females in our sale. Lot 61- ABF Ms Growth Fund 468M2, Lot 62- ABF Ms Empire 468M6 and Lot 100- ABF Ms Growth Fund 468M7.
- In last year's sale, **1912J2** had a daughter sell to Cavender Ranches for \$15,750 and **1912J8** had a daughter in the sale that sold to Whitley Cattle Company for \$14,000.

Addison Brangus is offering free shipping of ABF embryos. The embryos are stored at Trans Ova, at the Lawrenceville, Georgia, location. Addison Brangus will guarantee 3 pregnancies of each mating if transferred within one year by a licensed technician.

Selling (8) IVF grade 1 Embryos of each mating.

EMBRYO LOTS FROM ADDISON BRANGUS FARMS

117 MC SHO TIME 313H30 x ABF MS SOMETHING SPECIAL 23F9

MC SHO TIME 313H30
R10475474

BWCC CENTER SECTION 7F7
RBM MS SPECIAL FORCES 313A

ABF MS SOMETHING SPECIAL 23F9
R10403243

MC SOMETHING SPECIAL 129W14
ABF MS CSONKA 740Z13 23B2

CED	BW	WW	YW	M	TM	CEM	SC	REA	IMF	FT	Hfr Prg	Stay	Cow Wt	TI	FI
7.6	0.6	58	97	8	37	3.4	0.01	0.71	0.41	0.027	10.47	2.7	5.75	5.27	3.32
(20%)	(65%)	(1%)	(1%)	(55%)	(1%)	(55%)	(90%)	(3%)	(15%)	(90%)	(3%)	(25%)	(85%)	(1%)	(70%)

CED	BW	WW	YW	M	TM	CEM	SC	REA	IMF	FT	Hfr Prg	Stay	Cow Wt	TI	FI
9.4	-1.1	26	58	16	29	5.73	0.7	0.21	0.37	0.025	4.37	2.38	-4.83	3.42	4.38
10%	20%	25%	15%	10%	10%	4%	25%	40%	10%	95%	35%	30%	35%	10%	30%

Consigned by Addison Brangus Farms

Selling (8) IVF grade 1 Embryos.



ABF Ms Something Special 23F9 ~ Dam of Embryo Lot 117

118 MC SHO TIME 313H30 x MS DMR GUARDIAN 468C7

MC SHO TIME 313H30
R10475474

BWCC CENTER SECTION 7F7
RBM MS SPECIAL FORCES 313A

MS DMR GUARDIAN 468C7
R10296914

CRC GUARDIAN 9U8U5
MS BRINKS NEW ERA 468P14

CED	BW	WW	YW	M	TM	CEM	SC	REA	IMF	FT	Hfr Prg	Stay	Cow Wt	TI	FI
7.6	0.6	58	97	8	37	3.4	0.01	0.71	0.41	0.027	10.47	2.7	5.75	5.27	3.32
(20%)	(65%)	(1%)	(1%)	(55%)	(1%)	(55%)	(90%)	(3%)	(15%)	(90%)	(3%)	(25%)	(85%)	(1%)	(70%)

CED	BW	WW	YW	M	TM	CEM	SC	REA	IMF	FT	Hfr Prg	Stay	Cow Wt	TI	FI
6.4	-1.8	11	22	12	18	8.32	0.74	0.35	0.03	-0.013	7.57	4.35	15.83	1.33	6.64
30%	10%	80%	85%	25%	55%	1%	20%	20%	60%	5%	15%	1%	>95%	65%	1%

Consigned by Addison Brangus Farms

Selling (8) IVF grade 1 Embryos.



Ms DMR Guardian 468C7 ~ Dam of Embryo Lot 118

119 MC SHO TIME 313H30 x MS WW CAPITAL GAIN 1912J2

MC SHO TIME 313H30
R10475474

BWCC CENTER SECTION 7F7
RBM MS SPECIAL FORCES 313A

MS WW CAPITAL GAIN 1912J2
UB10495670

CB CAPITAL GAIN 924D19
R B LADY PARTY 1912-844

CED	BW	WW	YW	M	TM	CEM	SC	REA	IMF	FT	Hfr Prg	Stay	Cow Wt	TI	FI
7.6	0.6	58	97	8	37	3.4	0.01	0.71	0.41	0.027	10.47	2.7	5.75	5.27	3.32
(20%)	(65%)	(1%)	(1%)	(55%)	(1%)	(55%)	(90%)	(3%)	(15%)	(90%)	(3%)	(25%)	(85%)	(1%)	(70%)

CED	BW	WW	YW	M	TM	CEM	SC	REA	IMF	FT	Hfr Prg	Stay	Cow Wt	TI	FI
6.7	-0.6	34	59	3	21	3.1	0.67	0.41	0.23	0.021	8.79	2.71	5.23	3.1	3.7
25%	30%	10%	10%	95%	35%	70%	25%	15%	20%	90%	10%	20%	85%	10%	50%

Consigned by Addison Brangus Farms

Selling (8) IVF grade 1 Embryos.

120 MC SHO TIME 313H30 x CCR LADY EMPIRE 1912J8

MC SHO TIME 313H30
R10475474

BWCC CENTER SECTION 7F7
RBM MS SPECIAL FORCES 313A

CCR LADY EMPIRE 1912J8
UB10502331

DMR EMPIRE 795D12
LINZ LADY 337-8269

CED	BW	WW	YW	M	TM	CEM	SC	REA	IMF	FT	Hfr Prg	Stay	Cow Wt	TI	FI
7.6	0.6	58	97	8	37	3.4	0.01	0.71	0.41	0.027	10.47	2.7	5.75	5.27	3.32
(20%)	(65%)	(1%)	(1%)	(55%)	(1%)	(55%)	(90%)	(3%)	(15%)	(90%)	(3%)	(25%)	(85%)	(1%)	(70%)

CED	BW	WW	YW	M	TM	CEM	SC	REA	IMF	FT	Hfr Prg	Stay	Cow Wt	TI	FI
5.8	-0.5	44	65	10	32	3.04	0.75	0.6	0	0.01	7.86	3.6	5.06	3.01	5.49
40%	30%	2%	10%	40%	4%	75%	20%	3%	70%	75%	10%	5%	85%	15%	10%

Consigned by Addison Brangus Farms

Selling (8) IVF grade 1 Embryos.

BULLS AND HERD SIRE PROSPECTS

123 CJB FINAL TIME 23M

Born: 1/4/24 R10543644 Gen: 2 PHN: 23M

From Stewart Brangus

BWCC FINAL TIME 313H2
R10451991

BWCC MCQUEEN 192E24

RBM MS SPECIAL FORCES 313A

CRC GUARDIAN 9U8U5

QCB MS 23X2

BWCC CROSS FIT 541B28
BWCC MS CHILL FACTOR 192A60
MC SPECIAL FORCES 924Y4
RBM MS RITE DIRECTION 313X3
CSOKA OF BRINKS 30R4
MISS 4L BEST BET 9U8P5
TCB CATAWBA WARRIOR R532
SVF MS 23M19

BW		WW		YW		REA		FT		IMF					
74 (95%)		651 (96%)		1115 (96%)											
CED	BW	WW	YW	M	TM	CEM	SC	REA	IMF	FT	Hfr Prg	Stay	Cow Wt	TI	FI
8.1	-1.2	24	42	9	21	4.48	0.8	0.38	0.37	0.026	6.22	3.09	2.57	2.81	4.68
15%	20%	40%	50%	45%	40%	20%	25%	25%	15%	90%	25%	15%	70%	25%	20%

Great heifer bull. Might be the best Final Time to date. He has a 5 Star Disposition. Don't miss him.



CJB Final Time 23M

124 3S EPIC 535M

Born: 3/5/24 UB10554558 Gen: 3 PHN: 535M

From 3S Cattle Farms

SF EPIC 535G74
UB10438098

SUHN'S EPIC 331D16

SF MISS CONSENSUS 535Z3

VOREL ABSTRACT 25E9

SF MISS MACK 535C4

S A V RESOURCE 1441
SUHN'S MISS LTD 331X18
CONNEALY CONSENSUS 7229
SF MISS TIN MAN 535X15
MAR INNOVATION 251
VOREL MS 30T 25Z
MCKELLAR CONSENSUS 7229
SF MISS LAMBERT 535A7

BW		WW		YW		REA		FT		IMF							
100 (122%)		638 (100%)															
CED	BW	WW	YW	M	TM	CEM	SC	REA	IMF	FT	Hfr	Prg	Stay	Cow	Wt	TI	FI
-0.3	2.4	40	70	8	28	1.45	0.58	0.44	0.3	0.008	6.96	3.49	7.53	3.55	5.26		
>95%	95%	10%	10%	55%	15%	>95%	40%	20%	20%	60%	20%	10%	90%	15%	10%		

His pedigree names Epic on top and Abstract on bottom. His high growth potential is the evidence. This bull weaned at 652 lbs with no creep and looks better every day. With an impressive 9 traits in the top 20%, put him on a good dam and he's sure to put meat on the table.



3S Epic 535M

125 CF M06

Born: 6/15/24 R10590609 Gen: 3 PHN: M06

From Cleghorn Farms

ABF BLACK GRANITE 20G2
R10426568

ABF BLACK GRANITE 23D5

HF MISS LEAD GUN 20T

ABF BLACK GRANITE 23D5

ABF MS PATTON 568B

MC GRANITE 834B
SVF MS 535P9 23S104
BRINKS LEAD GUN 415P44
CLEMS NIMITZ 20P6
MC GRANITE 834B
SVF MS 535P9 23S104
PATTON OF BRINKS 30T22
MB MS CRUSADER 568Z3

IMF MS Shepherd 2025																	
BW		WW		YW		REA		FT		IMF							
74 (100%)																	
CED	BW	WW	YW	M	TM	CEM	SC	REA	IMF	FT	Hfr	Prg	Stay	Cow	Wt	TI	FI
3.9	0.2	29	51	9	23	4	0.57	0.17	-0.01	0.02	4.35	1.88	-0.85				
75%	55%	30%	30%	45%	30%	35%	40%	60%	75%	85%	40%	50%	50%				

CF M06 comes from an excellent pedigree. Sired by ABF Black Granite 20G2. CF M06 has 10 EPD traits breed average or better, including top 30% WW and YW. This bull has a great disposition, is gentle, and has a good demeanor when around people and other cattle.



5 STRAWS OF SEXED SEMEN FROM CROOKED CREEK CATTLE COMPANY

128 DMR KINGDOM 535G45

Born: 8/22/19 R10434685 Gen: 5 PHN: 535G45 From Crooked Creek Cattle Co.

DMR EMPIRE 795D12
R10232531

TJM THREE D 302A

CB FINAL CUT 924X
OAKS MS PATTON 302X3
MC JETHRO 00S3
MS BRINKS UPPERCUT 795R9
CB HOMBRE 541T3
MS BRINKS LAMBERT 535T4
BRIGHT SIDE OF BRINKS 789G5
MS 38 CENTER RANCH 535/J8

MS DMR JETHRO 795Y2

TJM CORONADO 535X

SVF MS 535M31

MS DMR CORONADO 535A8
R10254759

MS-30 CENTER PARCH 55530																	
BW		WW			YW			REA		FT			IMF				
78 (100%)		629 (100%)			1179 (100%)			13.3 (100%)		0.45 (100%)			4.17 (100%)				
CED	BW	WW	YW	M	TM	CEM	SC	REA	IMF	FT	Hfr	Prq	Stay	Cow	Wt	TI	FI
11.8	-2.7	21	31	1	12	3.33	-0.1	0.13	0.05	0.034	8.56	2.91	-3.56	1.44	3.93		
2%	5%	55%	75%	>95%	90%	60%	95%	65%	60%	95%	10%	20%	40%	65%	45%		

What an opportunity here!!! A true proven sleep at night heifer bull with a 70% accuracy on his top 10% CED and 80% accuracy on his top 3% BW. This bull will give you peace of mind and turn your head with the absolute showstopper calves that hit the ground. **We are offering 5 straws of sexed female semen.** Use it on your elite heifers or use it for flushing your favorite donor female to make that next elite group of heifers, the choice is yours! Semen is stored at Trans Ova in Lawrenceville, GA. It can be shipped from that location or picked there.



DMR Kingdom 535G45

25 STRAWS OF SEMEN FROM RIVER VALLEY FARMS

129 DMR MAGNIFICENT 535H24

Born: 8/17/20 R10478588 Gen: 5 PHN: 535H24 From River Valley Farms

CB FINAL CUT 924X
R10168212

MC REVELATION 129T

MC NEW DIRECTION 000 M24
MB MS NIMITZ 129R
MC GUNS DONOVAN 124R
RBM MS 52 COOL HAND 924R
CB HOMBRE 541T3
MS BRINKS LAMBERT 535T4
BRIGHT SIDE OF BRINKS 789G5
MS 38 CENTER RANCH 535/J8

RBM MS GUNS 924T3

TJM CORONADO 535X

SVF MS 535M31

MS DMR CORONADO 535A8
R10254759

MS-30 CENTER HATCH 55536																	
BW		WW				YW		REA		FT		IMF					
64 (100%)		633 (100%)				994 (100%)		12.29 (100%)		0.17 (100%)		4.16 (100%)					
CED	BW	WW	YW	M	TM	CEM	SC	REA	IMF	FT	Hfr	Prg	Stay	Cow	Wt	TI	FI
8.5	-1.4	28	47	7	21	3.45	0.19	0.46	0.12	0.022	6.69	3	10.82	2.49	3.99		
15%	20%	30%	40%	65%	40%	55%	80%	20%	45%	85%	20%	15%	95%	30%	45%		

!!Opportunity Here !! We are offering an opportunity here to get in on the first semen to be offered at any sale. He is a Final Cut son out of the famous 535A8 DMR Coronado cow. Being a 1/2 sib to Kingdom, Windfall, Admiral, and Cash Flow. He has Herd Sire written in bold. This past fall, he was the NS sire to the \$16,000 23L6 heifer that sold to Fenco Farms. With his progeny averaging \$10,000, don't let this opportunity slip away. He also has a potential donor selling this fall at T3 Brangus/Pine Belt Alliance Sale on November 23rd. **Offering 25 units of semen.**



DMR Magnificent 535H24



COMMERCIAL FEMALE OFFERING

We are very proud to offer this fine set of commercial females. Many are sired by or bred by an Addison Brangus Farms bull either by natural service or AI. We think this is the best commercial offering that we have had thus far. We strive to increase the quality of our commercial female offering each year, so our customers can continue to improve their cattle programs as well.

Lots 132-136 Fall Bred Heifers Consigned by Addison Brangus Farms

5 Head.....Nice set of fall bred heifers. All raised at Addison Brangus Farms. Some of these heifers will calve before sale day. PE bred to ABF Empire 23K from 11/29/24 to 1/11/25 and to ABF Dutton 20L3 from 1/12/25 to 5/9/25.

Lots 137-157 Spring Bred Heifers Consigned by Addison Brangus Farms

21 Head.....Nice set of spring bred heifers. Most of these heifers are sired by ABF bulls. They are PE to ABF Dutton 20L3 from 5/9/25 to 7/31/25.

Lots 158-160 Bred Heifers John Norris

3 Head.....Three nice heifers, 2 motley-faced, 1 Brangus PE bred to ABF Empire 23K from 1/11/25 to 5/10/25. Vet checked 7-8 months. Maybe calves at side by sale day.

Lots 161-164 Bred Heifers Consigned by Spitzer Farms

4 Head.....This set of heifers are sired by Addison Brangus Farms bulls and confirmed bred to ABF Dutton 20L3 from 5/9/25 to 7/31/25.

Lots 165-169 Fall Bred Heifers Consigned by Wilimore Farms

5 Head.....Bred by two of my herd bulls. Good heifer bulls. PE to a Monument son, Mr WF J160, UB10478438 and to ELC Mr Final Cut 54F, R10375410 from 5/1/25 to 7/5/25.

Lots 171-176 Open Heifers Consigned by Addison Brangus Farms

6 Head.....This fancy set of open heifers are sired by ABF Black Rock 27H5 and ABF Blackstone 23G2. These heifers were born from 11/4/2024 to 12/8/2024.

Lots 177-183 Open Heifers Consigned by Acres of Grace Cattle Company

7 Head.....Open Brangus heifers, they are out of registered Brangus cows and sired by registered Brangus bulls.

Lots 184-185 Open Heifers Consigned by Spitzer Farms

2 Head.....Open heifers sired by Addison Brangus Farms bulls.

Lot 186-193 Open Heifer Consigned by John Norris

8 Head.....Wayne talked me into selling this good set of open Brangus heifers. November-December calves. Avg weight 715 lbs by sale day. All black, sired by Addison Brangus bull.

Lots 194-197 Open Heifers Consigned by Holt Farms

4 Head.....Open Brangus heifers.

Lots 198-199 Open Heifers Hurricane Creek Brangus

2 Head.....Open Brangus heifers.

Lot 200 Open Heifer Consigned by River Valley Farms

1 Head.....Commercial Open Heifer.

Lots 201-205 Open Heifers Consigned by Addison Brangus Farms

5 Head.....Good set of 4-year-old Brangus cows coming with their 3rd calf. These cows would fit in anyone's herd and they would also make good recipients for embryo transfer. Bred to EB Modelo 1912K17 from 11/28/24 to 4/26/25.

Lot 206 Fall Bred Cow Consigned by Staggs Farms

1 Head..... Nice young cow coming with her 3rd calf. Vet confirmed bred by ultrasound 5/30/25 at 2 months. Natural service to Mr WF J154, a MC Something Special 889Y12 son. Bred to Mr WF J154, R10505752 from 12/12/24 to 4/1/25

Lot 207 Spring Bred Cow Consigned by Staggs Farms

1 Head..... Nice 4-year-old cow. Pasture exposed to SF Dynamic 23M, R10567565 from 6/1/25 to 7/28/25 and to ELC MR Brickhouse 535L, R10519753 from 8/1/25 to 8/23/25. Breeding status available sale day.

Lots 208-208A Spring Three-in-One Consigned by River Valley Farms

2 Head.....Commercial Three-in-One



TERMS AND CONDITIONS

BIDDING

Each animal will be sold to the highest bidder without reserve. The auctioneer will settle any disputes as to bids and his decision on such matters shall be final.

TERMS

Each animal becomes the risk of the purchaser as soon as sold, but it shall be the obligation of the seller to see that animals are fed and cared for until loaded for shipment or until the expiration of 48 hours after the sale, whichever occurs sooner. After 48 hours a maintenance fee of \$5 per day will be assessed until pickup, unless ABF arranges shipment.

SIGHT UNSEEN PURCHASES

Buyers may purchase through Wayne Addison at auction without viewing the cattle. For sight unseen purchases, the buyer has the right of inspection at the time of delivery. If the animal is deemed unsatisfactory, it may be reloaded on the delivery truck and returned to the farm of the seller at no obligation to the buyer. All transportation expenses will be the responsibility of the seller. If the animal is deemed unsatisfactory within one week of the purchase, the buyer may at their expense, return the animal to the farm of the seller for a full refund of the purchase price.

CERTIFICATE OF REGISTRY

A transferred certificate of registry will be furnished to the purchaser for each registered animal once proper settlement has been made.

HEALTH

Health papers suitable for interstate shipment will be furnished on all animals.

ANNOUNCEMENTS

Any changes from the information of any kind in this catalog will be provided in a sale day supplement sheet or announced from the auction block and such information shall take precedence over cataloged information.

BREEDING GUARANTEE

1. All animals are guaranteed to be breeders with the exception of: a) calves under 12 months of age; b) animals shown by purchaser after sale in which the guarantee (if any) shall be between the seller and the buyer; c) injury or disease occurring after the sale; d) gross negligence or willful misconduct on the part of the purchaser; e) death by any reason.
2. Any bull which settles cows by natural service and passes a fertility test made by competent veterinarians, mutually agreed upon by the buyer and seller, during any six month period of trial (provided for in paragraph 2 of the section of these sales terms and conditions entitled "Options and Privileges of Return or Adjustment") shall be considered a breeder. All partial interest bulls are guaranteed to produce freezable quality semen.
3. Safe in calf females have been examined by competent personnel and are so guaranteed.
4. Exposed females have been exposed but are not guaranteed to be safe in calf.

5. Open females have not been served and are so guaranteed.

6. Donor Females. a) A female is not guaranteed to be a breeder after the date of the sale when that female is to be used or attempted to be used, in an embryo transfer program, unless by separate agreement between the buyer and seller. b) Embryo transfer guarantee. Even though it is possible some of the female lots have worked successfully in our embryo transfer program in the past, and should in the future, there is no guarantee or warranty on future embryo production of any lot. Flush records are available upon request.

PREGNANCY DETERMINATION

The registered females in this sale noted safe in calf have been determined pregnant by physical palpation or ultrasound technology. Our best estimate of service sire will be given in the case of the females with both an A.I. sire and a natural breeding sire. Keep in mind this is our best estimate.

OPTIONS AND PRIVILEGES OF RETURN OR ADJUSTMENT

1. All claims for adjustment or refund must be made in writing within six months of the sale date.
2. In the event an animal is claimed to be a non-breeder, the animal may be returned to the farm of the breeder if in good condition and complying with the health requirements of their state. The seller shall be entitled to a six month trial following the return of the animal in which to prove that the animal is a breeder. If at the end of six months the seller is unable to prove the animal is a breeder, the seller shall at the option of the buyer replace the animal with another of equal value or issue a credit for the initial selling price. If the seller proves the animal to be a breeder, it shall be the obligation of the purchaser to take delivery of the animal and pay all expenses incurred for transportation.
3. If an animal is sold and at a later date proves not to be eligible for registration under association rules, the seller shall be obligated to make a satisfactory adjustment on the purchase price to the buyer, refund the purchase price or issue a credit for the initial selling price upon the return of the animal to the farm of the seller.
4. If an animal is sold and through DNA is proven to have incorrect parentage as represented by the certificate of registration, and for which the parentage can be determined, the seller shall be obligated to make a satisfactory adjustment on the purchase price to the buyer, refund the purchase price or issue a credit for the initial selling price upon the return of the animal to the farm of the seller.

RIGHTS AND OBLIGATIONS

1. The above terms and conditions of sale shall constitute a contract between the buyer and seller of each animal and shall be equally binding on both. Other than the guarantees and warranties stated above, no other warranties or guarantees are expressed or implied. Each sale or resale of an animal constitutes a separate transaction.
2. Addison Brangus Farms or any other person connected with the management of the sale assumes no liability, legal or otherwise.

Semen Available from Addison Brangus Farms

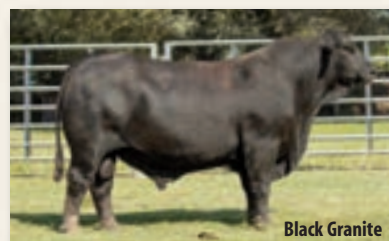


Blackstone

ABF

Contact

Wayne Addison at (205) 412-5356
for semen on these two ABF AI Sires!



Black Granite

ABF BLACKSTONE 23G2

Born: 2/13/19 R10410461 Gen: 4 BWCC Monument 10D7 x QCB Ms Nuff Said 23Z12

CED	BW	WW	YW	M	TM	CEM	SC	REA	IMF	FT	Hfr Prg	Stay	Cow Wt	TI	FI
4	-0.9	19	33	10	20	3.11	0.87	0.22	0.27	0.031	7.99	2.16	-6.61	2.06	3.56
70%	25%	60%	70%	35%	45%	70%	20%	50%	25%	95%	10%	40%	25%	45%	60%

ABF BLACK GRANITE 23D5

Born: 9/4/16 R10333005 Gen: 1 MC Granite 834B x SVF Ms 535P9

CED	BW	WW	YW	M	TM	CEM	SC	REA	IMF	FT	Hfr Prg	Stay	Cow Wt	TI	FI
6.7	-1.5	12	36	8	14	5.14	0.78	0.22	-0.02	0.03	4.51	2.66	-4.77	1.46	4.47
30%	15%	80%	60%	55%	80%	10%	25%	50%	80%	95%	40%	25%	30%	65%	25%

Notes

Watch & bid online for FREE at

DVAuction
Broadcasting Real-Time Auctions

Can't make the sale? Bid from home with DV Auction's "real-time" internet bidding service!

Buying online is as easy as 1, 2, 3...

1. Create an account at www.dvauction.com under the "register" tab
2. Apply for bidding approval by clicking on the "details" tab at least 24 hours prior to the auction-a DV representative will notify you once you have been approved
3. Tune in for the sale and make your purchases!

After the sale, contact the sale manager or owner to arrange transportation and payment. **High speed internet** is required for successful bidding-be sure to check the lag-time monitor in the top left corner to ensure real-time broadcasts.

Proxy Bidding-if you can't make time to watch the sale, register a proxy bid and let our system represent your bid while you're away. Look for the "proxy bid" tab on the auction listing, and fill in your maximum bids. We'll handle the rest!

Having troubles? During the auction, you can type a message to the operator at any time for assistance. Our full-time support team can also always be reached at (402) 474-5557.

DVAuction
Broadcasting Real-Time Auctions

Full Service Livestock Marketing

Video - Photography - The Stock Exchange - Ring Service - Banner Ads - Onsite Viewing Service





ADDISON BRANGUS FARMS
Wayne & Leisa Addison
1043 County Highway 130
Winfield, Alabama 35594
AddisonBrangusFarms.com

Presorted
First Class
US Postage
PAID
SlateGroup

DVAuction
Broadcasting Real-Time Auctions

ADDISON BRANGUS FARMS
ABF
WINFIELD, ALABAMA
Wayne & Leisa Addison (205) 412.5356

**ADDISON BRANGUS FARMS AND FRIENDS
PERFORMANCE SALE**

SATURDAY, OCTOBER 11, 2025 • 10 AM CST

CULLMAN STOCKYARD ~ CULLMAN, ALABAMA