



Exclusively represented by SPM Logistics LLC
2535 Kettner Boulevard, San Diego, California 92101,
United States
Phone: 858 800 4400 Cell: 858 305 9606
Web: www.jevol.us www.treaddepthscanner.com

TDF-30 Tire Tread Depth Scanner Solution

(Flush mount)

Why is it important to know about the tread depth of the tire? As the tire is used frequently, its tread slowly wears down, and the depth lessens. As this happens, the tire's efficacy decreases, and it starts losing its grip. Traditional method is to use tread depth gauge to check the depth manually, which is time-consuming, and easy to have error or missed detections.

TDF series Automatic Tire Tread Depth Scanner, can help you easy and quick to do the detection. All you need to do is to driving through the scanner, a report will be issued in 4 seconds, with accuracy up to 0.0039 in (0.1mm). The equipment is easy to install and maintain, and is wind and waterproof.



Tread depth measurements

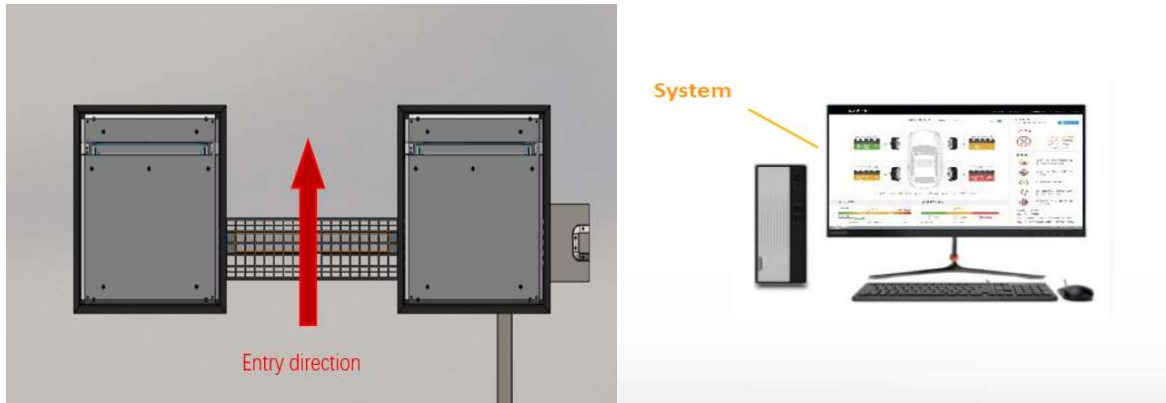


(Screen shot of the report. For US customers, the tread depth gauge will be displayed in 32nds of an inch.)



Exclusively represented by SPM Logistics LLC
2535 Kettner Boulevard, San Diego, California 92101,
United States
Phone: 858 800 4400 Cell: 858 305 9606
Web: www.jevol.us www.treaddepthscanner.com

TDS series Automatic Tire Tread Depth Scanner, consists of scanners and computer system:



Accessories

- ◆ Left & right scanner
- ◆ Steel grating
- ◆ PC, Monitor, Mouse, keyboard
- ◆ License plate camera

This tread depth scanner is equipped with a special air blade that cleans the laser scanner from sand, dust, and water. However, the air compressor is not included in the equipment set. A separate quote will be provided if an air compressor is needed.



Exclusively represented by SPM Logistics LLC
2535 Kettner Boulevard, San Diego, California 92101,
United States
Phone: 858 800 4400 Cell: 858 305 9606
Web: www.jevol.us www.treaddepthscanner.com

TDF-30 Automatic Flush Mount Tire Tread Depth Scanner



Items	Parameters
Model	TDF-30
Size in mm (H x W x D)	85.8*29*3.5 in (2180*735*90mm)
Weight	440 lbs. (200kg)
Venue size requirements	88.6*31 in (2250*780mm)
measurement accuracy	0.0039 in (0.1mm)
Measuring range of tread depth	0 - ¹⁵ / ₃₂ in (0-12mm)
Effective measuring width	1.96 in (50mm)
Measuring range of tire qty for each side	single wheel or multiple wheels
Measurement Duration	4 seconds
Network requirements	wired & wireless network (WIFI,4G)
Max. speed	0 – 6 Mph (10km/h)
Max. single axial load	6613 lbs. (3000kg)
Voltage supply	110 - 220V, 150W
Operating temperature	23 - 140°F (-5 – 60 °C)
Protection type	IP68