

Westside Builder

The Newsletter of the Westside Home Builders Association



**June
2025**

**General Membership Meeting - Tuesday, June 10, 2025 from 11:30 am to 1 pm
at SAM & ROSCOS Restaurant, 7450 Douglas Blvd., Douglasville, GA.**

Single-Family Starts Down on Economic Uncertainty

Economic uncertainty stemming from tariff issues, elevated mortgage rates and rising building material costs pushed [single-family housing starts lower](#) in April.

Overall housing starts increased 1.6% in April to a seasonally adjusted annual rate of 1.36 million units, according to a report from HUD and the U.S. Census Bureau.

The April reading of 1.36 million starts is the number of housing units builders would begin if development kept this pace for the next 12 months. Within this overall number, single-family starts decreased 2.1% to a 927,000 seasonally adjusted annual rate and are down 12% compared to April 2024. The multifamily sector, which includes apartment buildings and condos, increased 10.7% to an annualized 434,000 pace.



On a regional and year-to-date basis, combined single-family and multifamily starts were 19.8% higher in the Northeast, 4.4% higher in the Midwest, 7.4% lower in the South and 3.4% higher in the West.

Overall permits decreased 4.7% to a 1.41-million-unit annualized rate in April.

Single-family permits decreased 5.1% to a 922,000-unit rate and are down 6.2% compared to April 2024. Multifamily permits decreased 3.7% to a 490,000 pace.

Looking at regional permit data on a year-to-date basis, permits were 20.3% lower in the Northeast, 5.1% higher in the Midwest, 3.8% lower in the South and 3.5% lower in the West.

In April, the number of single-family homes under construction is at 630,000 homes while the count of apartments under construction is at 788,000 units.

NAHB Submits Deregulatory Ideas

On May 12, NAHB submitted a comprehensive framework of [deregulatory recommendations](#) to the Office of Management and Budget (OMB) that covers several federal agencies that encompass a host of regulations affecting the residential construction industry.

The submission was made pursuant to an official OMB Request for Information that asked the private sector to help identify regulations that are unnecessary, unlawful, unduly burdensome, or unsound.

Court Reinstates Trump's Tariffs

A federal appeals court has temporarily restored President Trump's power [to impose tariffs](#) by claiming a national emergency. The Court of Appeals for the Federal Circuit issued a ruling May 29 that stayed the May 28 order by the Court of International Trade that halted the national emergency tariffs. While the Federal Circuit has ordered that the tariffs resume, it has not issued a final order interpreting or otherwise ruling on the validity of the president's tariff orders.

DOL to Pause Job Corps Operations

The U.S. Department of Labor recently announced it was [pausing Job Corps](#) center operations nationwide. In response, NAHB called on Congress and the Trump administration to take immediate action to ensure programs are available to help better train prospective trade workers and strengthen America's construction workforce pipeline.

Trump Proposes Major Cuts to HUD

President Trump has proposed a budget that would cut non-defense discretionary spending by \$163 billion for fiscal year 2026, which runs from Oct. 1, 2025, through Sept. 30, 2026. The spending reductions include [a \\$33.6 billion cut](#) — about 44% — for the U.S. Department of Housing and Urban Development.

It is important to note that no White House budget is ever approved "as is" by Congress. The annual appropriations process determines the levels of federal spending for each of the federal departments and agencies, and all programs within their respective jurisdictions.

Apply to Be the Next National Associate Chair

National Associate Chairs (NACs) play an essential role in the Federation as they work closely with Senior Officers to help facilitate effective communication and collaboration between NAHB leaders and Associate members. [Applications to serve as the next NAC](#) are now open through Sunday, July 13.

NAHB has two Associate NACs who each serve two-year terms, staggered so only one new NAC is introduced each year. For more information on the nominations process for this position, visit nahb.org/associates.

Welcome A New Member to
Westside Home Builders Association



***Endorsed Provider of the**
"True Builders Risk" Insurance Program

CONTACT: Allen Davis, Associate Member WHBA
adavis@thesouthernagency.com

Office 423 763 1111

Cell 912 678 3733

Kyle Stephens, Affiliate Member WHBA



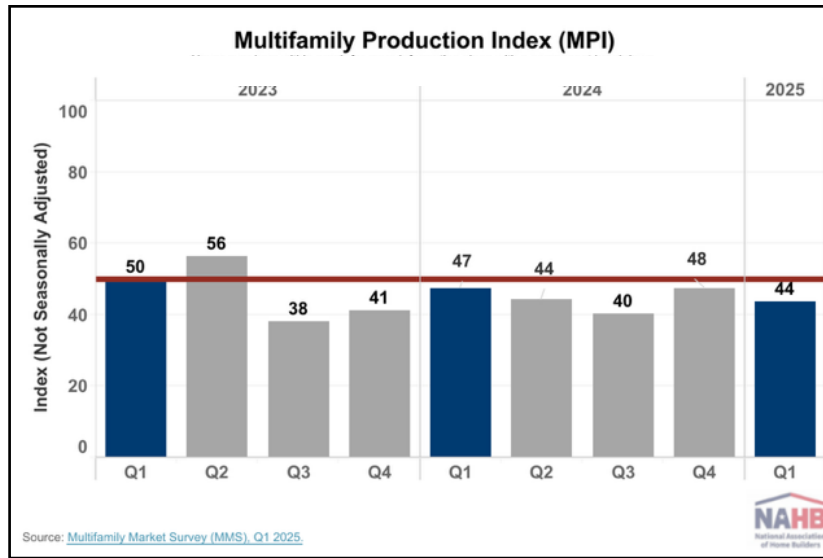
DO **BUSINESS** WITH
AN NAHB MEMBER.

**You need accurate
coverage. Let's get
you insured.**

Multifamily Developer Confidence Falls in First Quarter

Confidence in the market for new multifamily housing declined year-over-year in the first quarter, according to the [Multifamily Market Survey](#) (MMS) released recently by the National

Association of Home Builders (NAHB). The MMS produces two separate indices. The Multifamily Production Index (MPI) had a reading of 44, down three points year-over-year, while the Multifamily Occupancy Index (MOI) had a



reading of 82, down one point year-over-year.

The MPI measures builder and developer sentiment about current production conditions in the apartment and condo market on a scale of 0 to

100. The index and all its components are scaled so that a number below 50 indicates that more respondents report conditions are poor than report conditions are good.

Best Paying Jobs in Construction

Half of payroll workers in construction earn more than \$60,320, and the top 25% make at least \$81,510, according to the latest May 2024 Bureau of Labor Statistics Occupational Employment and Wage Statistics (OEWS) and [analysis by NAHB](#). In comparison, the U.S. median annual pay is \$49,500, while the top quartile (the highest paid 25%) makes at least \$78,810.

Among construction trades, elevator installers and repairers top the median wages list with half of them earning over \$108,130 a year, and the top 25% making at least \$133,370. First-line supervisors of construction trades are next on the trade list; their median wages are \$78,900, with the top 25% of supervisors earning more than \$100,150.

Building Homes on Federal Lands

Federal lands for development have gained traction in the mainstream media since President Trump first announced his interest in [opening federally held land](#) for housing on the campaign trail. His administration has followed through on this interest — most recently, with the creation of the Joint Task Force to Use Federal Lands for Affordable Housing between the Department of the Interior and HUD.

The land is held by various federal agencies, including the Bureau of Land Management (BLM), U.S. Forest Service and the National Park Service. The land owned and managed by the BLM has emerged as a top contender for housing and development.

Welcome A New Member to *Westside Home Builders Association*



EXTERIORS

Greg Rowland

www.grexteriors.com

Contact

gr.office@grexteriors.com

[\(770\) 942-2546](tel:(770)942-2546)

DO **BUSINESS** WITH
AN NAHB MEMBER.

Founded in 2003 by Greg Rowland, GR Exteriors established itself in the siding industry, specializing in new construction single-family and multifamily construction. GR Exteriors has successfully sided over 9,000 southeastern apartment units and 5,000 Metro Atlanta homes, earning a reputation of integrity and reliability along the way.

In the 20+ years since its founding, GR Exteriors has sought and achieved steady sustainable growth allowing us to continue to provide our customers with the service they have come to expect from GR Exteriors. We have overcome obstacles and adapted to the ever-changing nature of the construction industry. However, our business philosophy has remained the same with a prioritization of taking care of our loyal customers, and this has made us a trusted siding subcontractor to many a home builder.

Leadership List

OFFICERS

President, Joe Irons
Vice-President, Johnny
Blankenship
Secretary/Treasurer,
Mason Tritt
Past President, Mike Lee

BOARD OF DIRECTORS

Blake Wilson
Cynthia Hall
Cory Lord
David Barnett
Sandra Harvey
Chuck Laster

LIFE DIRECTORS

Larry Boggs
Jeff Matthews
Robbie Robinson

EXECUTIVE OFFICER

Greg Wallace

Calendar of Events

June 10, 2025

Board Of Directors Meeting
10:45am - 11:30am
General Membership Meeting
11:30am - 1 pm

July - 2025

NO MEETING
SUMMER BREAK
ENJOY YOUR JULY 4TH!!!!
GOD BLESS AMERICA
HAPPY INDEPENDENCE DAY!

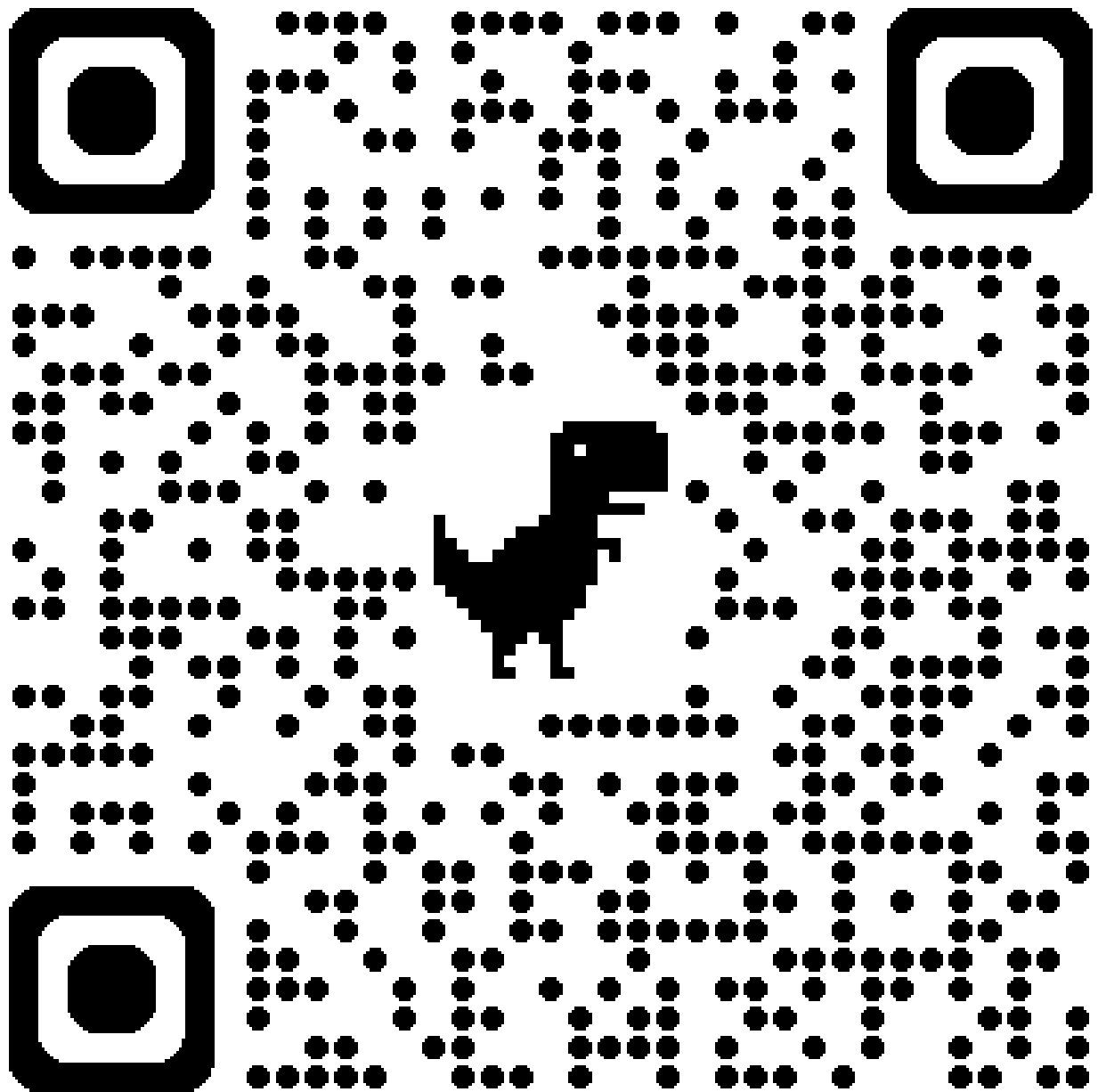
September 9, 2025

Board Of Directors Meeting
10:45am - 11:30am
General Membership Meeting
11:30am - 1 pm

LOCATION:

Sam & Roscos Restaurant
7450 Douglas Blvd.,
Douglasville, GA. 30135





**Simply scan this code to apply for
Membership in Westside HBA**

Remodeled Show Home Returns for IBS 2026

As the International Builders' Show (IBS) returns to Orlando in 2026, so too does one of its most anticipated exhibits: **The New American Remodel®**. After a brief hiatus following IBS 2023, the showcase will once again share the spotlight with The New American Home®.

This time, Phil Kean Design Group is leading the project with a "soft remodel"

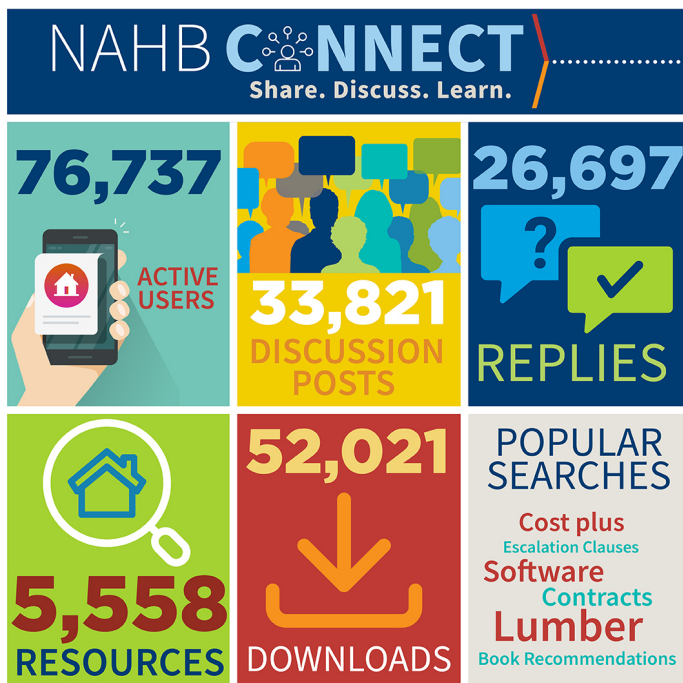
approach on a 3,341-square-foot home in Winter Park, Fla. Unlike some past exhibition homes that underwent extensive structural changes, this remodel will retain much of the original home's layout.



**Rendering of front walkway of
The New American Remodel 2026**

Originally built in the 1950s, the residence had previously been renovated in various styles over the decades, leaving its character fragmented. Kean's vision is to unify and modernize these disparate elements into one cohesive design that feels both current and timeless.

The updated layout will feature an open floorplan that uses intentional design strategies to define distinct living spaces. Kean describes the aesthetic as having a "tropical Miami" flair with a touch of historical charm.



DO
BUSINESS
WITH AN
NAHB
MEMBER.

Members Save Millions

Start saving at nahb.org/savings

NAHB.

WHY SHOULD YOU JOIN WHBA?

Membership Benefits:

- **SAVE \$100 per house for DET/Blower Door Testing**
- **Health Care Program – Up to 60% more affordable than traditional health insurance**
- **All required Continuing Education Hours (CEU) can be obtained simply by attending membership meetings**
- **HBAG Member Rebate Program – Average SAVINGS of \$1,366/year**
- **Over 50 leading Manufacturer Rebate Programs**
- **NAHB Discount Programs from Lowe's, Office Depot, Dell, General Motors, GEICO, Hertz, UPS, Ram....just to name a few**

Go To www.westsidehba and click on "Member Benifits" to see all Programs and Savings.



Chuck Laster

Business Development Manager
at Carter Lumber

Westside HBA Membership Committee Chairman

I am honored to serve as the 2025 Membership Committee Chair of the Westside Home Builders Association. Our Membership serves Carroll, Douglas, Haralson, Paulding & Polk Counties. We are one of the largest Builder Associations in the State of Georgia. If you are a Builder, Supplier of building materials, Roofer, Flooring Company, Mortgage Provider, Realtor, etc., please check out our website www.westsidehba.com to see all the great benefits of becoming a Member. Click "**Become A Member**" to complete the Online Application. (just takes a few minutes). If you are a Builder, you will sign up under "Builder Member". The costs for your Company Membership is \$550.00 and any additional person(s) within your organization can also join as an "Affiliate Builder Member" for only \$165.00 per person. A non-builder will sign up as an "Associate Member" for \$550.00 and \$165.00 for each "Affiliate Associate Member". Our Membership meets monthly at Sam & Roscos Restaurant located at 7450 Douglas Blvd., Douglasville, Ga. Please give me a call with any questions. Chuck Laster - (678) 485-8569.

#GetInvolved

#AllBuildersNeedToBeAMember

#DontMissOut

#MembersDoBusinessWithMembers

#Save\$100PerHouseonDETesting

#MembershipBenefits

DO
BUSINESS
WITH AN
NAHB
MEMBER.

CARTER
Lumber

Remember:

All you have to do is "ASK"....

Invite 2 or more of your Subcontractors, Suppliers or Service Providers to become Members & attend the next WHBA General Membership Meeting. Who are your...

Accountants, Appraisers, Attorneys, Lumber Supplier, Cabinet Co., Plumbing Supplier, Concrete Co., Granite/Marble/Tile Supplier, Dry Wall Co., Framing Contractor, Electrical Contractor, Banker/Mortgage Broker, HVAC Co., Insulation Contractor, Landscaping Co., Masonry Contractor, Paint Co., Real Estate Company, Roofing Contractor, Security Systems Provider, Grading Co., Windows/Doors Supplier, Trim Carpenters, Decking Company.....

GOD Bless America!!!

2024 MEMBER SAVINGS PROGRAM | AT A GLANCE

nahb.org/savings



FUEL

COMPANY	SAVINGS	PRODUCTS	INFO
VOYAGER	Save on Fuel with Voyager card for Business. Savings anywhere Mastercard is accepted.	Fuel Savings & Fleet Management	usbank.com/splash/corporate-payments/transportation/nahb.html

BUSINESS MANAGEMENT

COMPANY	SAVINGS	PRODUCTS	INFO
DELL	Up to 40% off Dell computers, servers, electronics & accessories.	Computers & Hardware	dell.com/nahb 800-757-8442
ODP BUSINESS SOLUTIONS	Up to 75% off online regular prices on their Best Value List of preferred products. Plus, free shipping over \$50.	Office Supplies	offerediscounts.org/nahb 855-337-6811 x2897
UPS SHIPPING	Flat-rate pricing. 50% discount for next day shipping, 30% for ground commercial/residential.	Business Shipping	1800members.com/nahb 800-MEMBERS
TFORCE FREIGHT	At least 75% off Less Than Truckload (LTL) shipping over 150lbs.	Freight Shipping	1800members.com/nahb 800-MEMBERS
RINGCENTRAL	Save 15% off monthly on a new RingCentral Office service. Receive \$50 off the list price on any RingCentral phone. Current NAHB RingCentral users are eligible for discounts by calling and re-signing a 24 month agreement.	Message, Video & Phone	ringcentral.com/nahb 800-417 0930
HEARTLAND	Merchant processing and payroll solutions at reduced fees for NAHB Members	Payment & POS Solutions	go.heartlandpaymentsystems.com/nahb 800-613-0148

INSURANCE

COMPANY	SAVINGS	PRODUCTS	INFO
FARMERS INSURANCE	Choose an insurance plan that fits you and save at least 10%.	Personal & Business Insurance Needs	farmersinsurancechoice.com/nahb 888-528-0530

NAHB ASSOCIATION DISCOUNTS

COMPANY	SAVINGS	PRODUCTS	INFO
NAHB INTERNATIONAL BUILDERS' SHOW®	Up to \$200 off show registration. Up to \$3.75 per sq. ft. off exhibit space.	Trade Show	buildersshow.com
STRUCTURE PRODUCTIONS	Discounts on professional video and television production services.	Visual Media	structure-productions.com
NAHB CONTRACTS	Up to 30% off contract rates.	Legal	nahb.org/nahbcontracts
HOUSINGECONOMICS	\$100 off annual subscription.	Economic & Housing Data	housingeconomics.com
BUILDERBOOKS	10% off books. Up to 45% off research.	Books	builderbooks.com
ONLINE EDUCATION	Up to 30% off webinars; Up to 50% off online courses.	Education	nahb.org/education

*Discounts are as of 2/9/24 & subject to change at any time. Visit nahb.org/savings for latest deals & limited time offers.

2024 MEMBER SAVINGS PROGRAM | AT A GLANCE

nahb.org/savings



AUTO

COMPANY	SAVINGS	PRODUCTS	INFO
BMW	Earn up to \$1,500 on a new BMW or up to \$500 on a new MINI	BMW	memberdeals.com/nahb/shopping.php?action=view&sub=BMW&login=1
GOODYEAR	Members must log into NAHB.org to save 15% on Goodyear Tires.	Goodyear Tires & Services	nahb.org/goodyear
NISSAN	Save \$450 to \$3,800 on sedans, crossovers, SUVs and trucks.	Nissan	nahb.org/nissan

BUILDING MATERIALS

COMPANY	SAVINGS	PRODUCTS	INFO
LOWE'S PRO	5% off* in store, plus 2% statement credit with Commercial Account (LCA) or Lowe's Business Advantage (LBA). 5-10% off online orders using any payment method.	Building Materials	lowes.com/nahb 877-435-2440

WIRELESS

COMPANY	SAVINGS	PRODUCTS	INFO
T-MOBILE FOR BUSINESS	Save 12% on wireless.	Cell Phones, Internet, Plans & More	nahb.org/t-mobile

TRAVEL & ENTERTAINMENT

COMPANY	SAVINGS	PRODUCTS	INFO
AVIS	Save up to 30% off Avis PAY NOW rates when making a reservation with Avis Worldwide Discount (AWD) number G572900.	Rental Cars	avis.com/nahb 800-331-1212 AWD #G572900
Budget	Save up to 35% off Budget PAY NOW rates when making a reservation using Budget Customer Discount (BCD) number Z536900.	Rental Cars	budget.com/nahb 800-283-4387 BCD #Z536900
HotelPlanner	NAHB members can save up to 65% on hotel room rates at over 800,000 properties worldwide in more than 250 countries.	Hotels	nahb.hotelplanner.com 800-497-2175
MemberDeals <small>(EXCLUSIVE MEMBER ONLY OFFERS)</small>	Up to 50% off.	Theme Parks, Movie Tickets, Concerts, Water Parks & Gift Cards	memberdeals.com/nahb/?login=1 877-579-1201
sam's club	Save over 60% on a new membership plus receive travel and entertainment credit	Club Membership	memberdeals.com/nahb/packages.php?sub=packages&action=view&id=3291&login=1

Health & Wellness

COMPANY	SAVINGS	PRODUCTS	INFO
ACTIVE & FIT DIRECT	Find your perfect gym for \$28/month.	Fitness Membership	nahb.org/AFD

NAHB Members Saved over **\$40,000,000** last year