

**Bishop Engineering**  
 "Planning Your Successful Development"  
 3501 104th Street  
 Des Moines, Iowa 50322-2825  
 Phone: (515) 276-0466 Fax: (515) 276-0217  
 Established 1959  
 Civil Engineering & Land Surveying

**PAINTED WOODS WEST PLAT 1**  
**WAUKEE, IOWA**

**FINAL PLAT**

REFERENCE NUMBER:  
 020544  
 040311

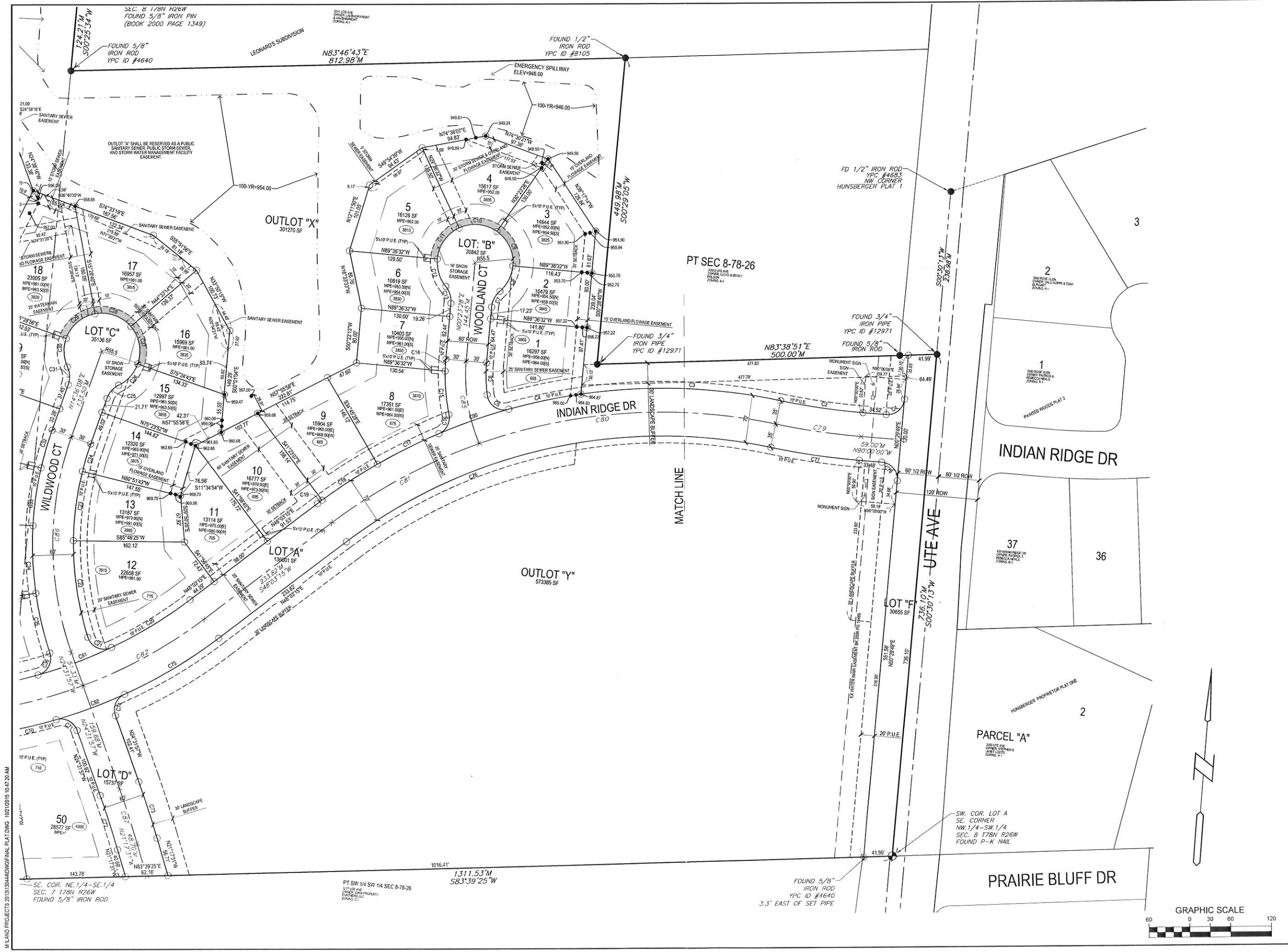
DRAWN BY:  
 JMR

CHECKED BY:  
 LH

REVISION DATE:  
 9/23/15  
 9/28/15

PROJECT NUMBER:  
**130444**

SHEET NUMBER:  
**2 OF 3**



M:\LAND PROJECTS\2013\130444\DWG\FINAL PLAT.DWG 10/21/2015 10:47:20 AM

**Bishop Engineering**  
 "Planning Your Successful Development"  
 3501 104th Street  
 Des Moines, Iowa 50322-3825  
 Phone: (515) 276-0467 Fax: (515) 276-0217  
 Established 1959  
 Civil Engineering & Land Surveying

**PAINTED WOODS WEST PLAT 1**  
**WAUKEE, IOWA**  
**FINAL PLAT**

REFERENCE NUMBER: 020544 040311
DRAWN BY: JMR
CHECKED BY: LH
REVISION DATE: 9/23/15 9/28/15
PROJECT NUMBER: 130444
SHEET NUMBER: 3 OF 3