



Ashlawn  
School

**PROSPECTUS**  
2023/24

# Welcome

Welcome to Ashlawn School, a warm and forward-thinking school community that combines high quality education with traditional values and high expectations.

Building on a legacy spanning almost 70 years, we are proud to provide an outstanding educational experience for our students.

At Ashlawn, we strive for academic excellence for all, knowing that all students have great potential and should be given every opportunity to fulfil it.

Our wonderful teachers deliver a broad and balanced education through a well-designed, contemporary curriculum and we offer fantastic facilities that cater for all students. As a bi-lateral school, this includes provision for students who have joined us through the 11+, as well as our specialist Modern Foreign Languages stream.

We also pay close attention to supporting the varied needs of all our students and have a dedicated Learning Development Department with specialist teachers, learning mentors and assistants on hand to support students' individual needs.

We passionately believe in promoting a holistic approach to education with a focus on the development of the whole child, not just their academic results. Our students are also encouraged to develop skills and expertise outside of the classroom through our extensive enrichment programme and an effective personal development curriculum, allowing us to nurture all students' talents while supporting their wellbeing.

We are determined that every student will be able to reflect on their time at Ashlawn as happy and fulfilling. A time that has not only enriched their lives and nurtured their aspirations, but that has provided the foundations needed for long term future success.

We hope that this prospectus provides you with a flavour of life at our wonderful school and look forward to welcoming you soon.



# TRANSFORMING LIVES



***Every Student,  
Every Opportunity***

**Transform your child's future**

---

At Ashlawn School, we believe in the power of education to present the greatest possible life opportunities.

Our core purpose is, therefore, to enable every young person to exceed their potential: to develop a love of learning, to widen their horizons, deepen their confidence and to aspire to all that they can be.

We believe that each student is unique and their learning is enhanced by a shared commitment to their education. Learners, teachers, parents and carers work together as a community to ensure outstanding opportunities for all.



## **Proud to be part of the Transforming Lives Educational Trust**

---

The Transforming Lives Educational Trust (TLET) believes in the transformative power of learning and its singular ability to broaden horizons, deepen perspectives and extend potential.

Our family of academies will be recognised as the most forward-thinking and innovative organisations within the communities they serve, providing a springboard for our children, young people and staff so that they become exemplary citizens who strive to stretch their potential and become transformers in a diverse and ever-changing world.

## **We are:**

---

**TRANSFORMING TOMORROW, TODAY**

## **Our Standards**

---

### **One team, one goal**

We are totally united and committed to improve life chances.

### **Best daily deal, everyday**

We have the highest expectations for all, in all, from all, always.

### **No excuses**

We see it, own it, sort it.

### **Community First**

If it's important to you, it's important to us – we care.

## Our Values

---



### **T**end the team

listening to, sharing with and learning from others so that we nurture the potential of all (loyalty)



### **R**each for excellence

only comparing ourselves to the best – seeking to match and then surpass it (excellence)



### **U**tilise innovation

seeking forefront thinking and creativity, and leading the change (courage)



### **S**eize success

holding onto our vision and building on our achievements (tenacity)



### **T**hank as you go

recognising the contribution of others to the Trust's successes (kindness)

## Our Team

---

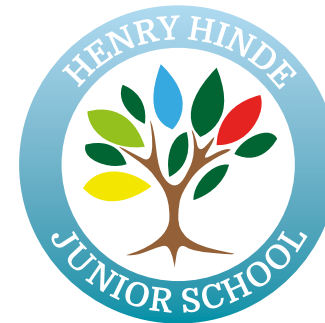
Without exception, everyone is deeply committed to the very highest outcomes, regardless of their role, recognising the strength of collective contribution and effort.

## Our Academies

---



Ashlawn  
School



HOULTON  
SCHOOL



### Academic Excellence for All

---

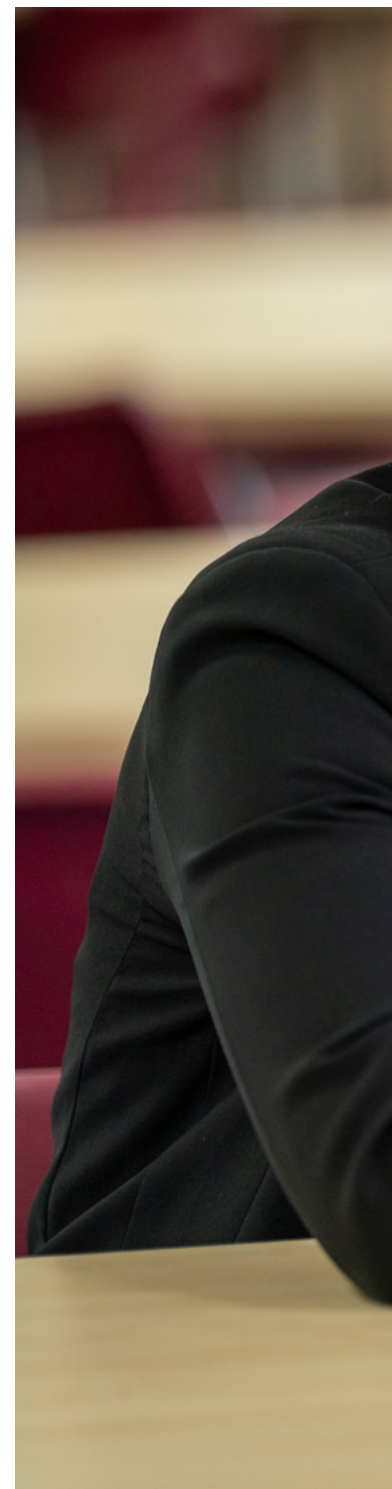
At Ashlawn School our students study a broad and exciting curriculum that equips them with the knowledge and skills they need for the future.

Throughout their time with us, students are encouraged to develop a lifelong love of learning, deepening their knowledge, inspiring their curiosity and nurturing their aspirations at every key stage.

We place the highest value on the quality of teaching and our lessons are structured around an agreed set of principles for effective learning, with clear routines and high expectations to support these.

Alongside the traditional subjects, we offer a dedicated personal development curriculum, focussing on building important life skills, developing an understanding and awareness of different cultures and beliefs and nurturing personal qualities that will help our students to become exemplary citizens of the future.

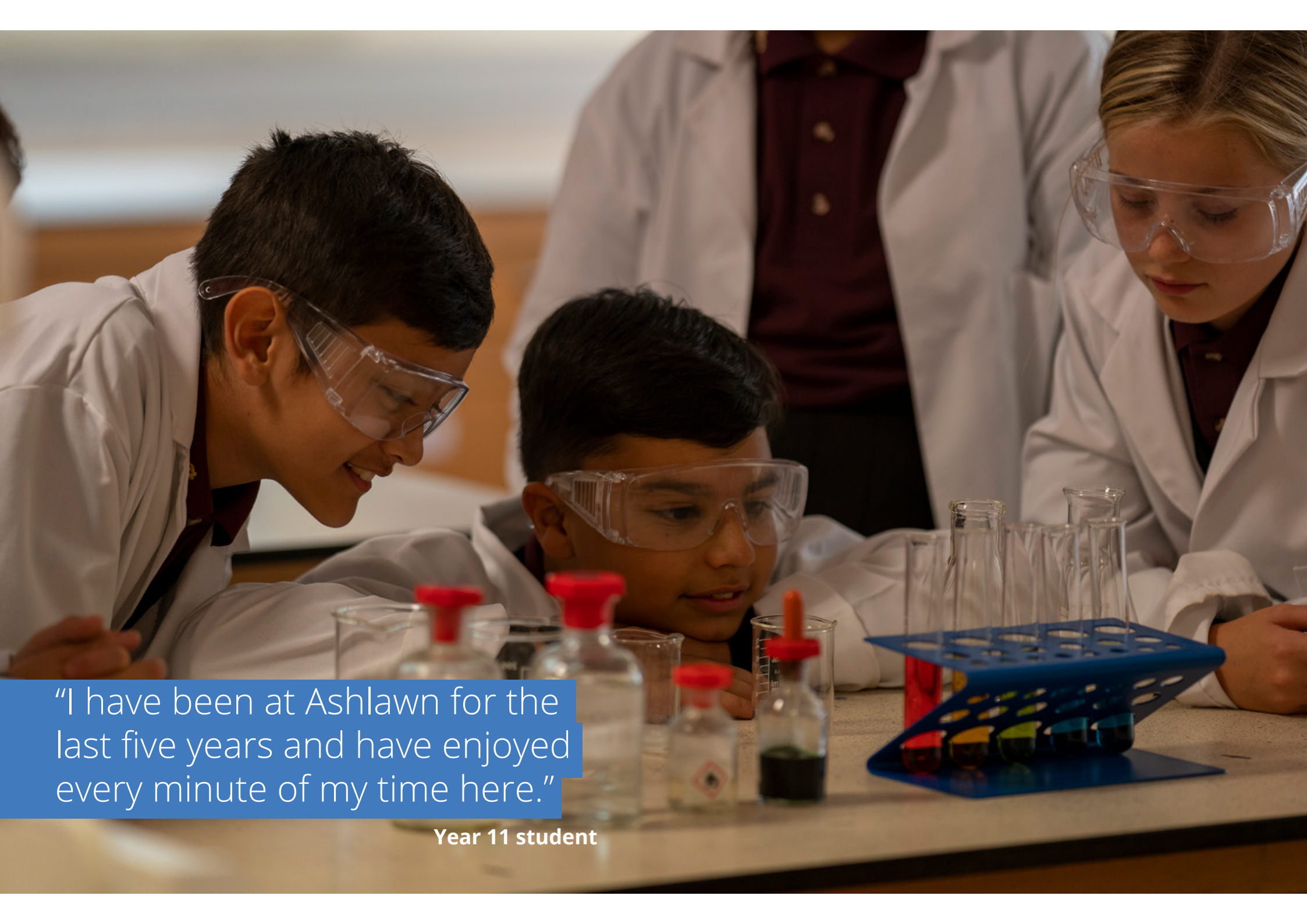
As an inclusive school, we are also committed to enabling young people to achieve their full potential, providing a personalised approach and additional support where needed, to allow every individual to flourish.





“If there is ever something you don’t understand in class, you can ask the teachers and they will help you (all of my teachers are so kind).”

Year 7 student



“I have been at Ashlawn for the last five years and have enjoyed every minute of my time here.”

**Year 11 student**





### Skills in the Sciences

---

Preparing our students for the future world of work is at the forefront of our ambitions, so naturally Science, Technology, Engineering and Mathematics (STEM) is a key part of our curriculum.

Alongside teaching fundamental skills for future work and life, our STEM provision also nurtures critical thinking skills, fostering curiosity and instilling a passion for innovation.

At Key Stage 3, our students explore the fundamentals of STEM through subjects including Biology, Chemistry, Physics, Maths, Design Technology and Food and Nutrition, with the opportunity to take up specialist Engineering courses at Key Stage 4 and 5.

Students also have the chance to participate in a host of inspiring STEM opportunities, some examples include our Science Club, the UK Mathematics Trust Challenges, CREST awards, Royal Society courses and Women in Physics conferences.





### Embracing the Arts and Humanities

---

The Arts and Humanities at Ashlawn are a vibrant and exciting part of our offer.

With subjects including Art, Drama, English, Geography, History, Modern Foreign Languages and Music there are so many benefits to embracing the arts and humanities. From encouraging self-expression and creativity, to building confidence and a sense of individual identity, these subjects can also help to develop critical thinking skills and the ability to interpret the world around us.

Every Key Stage 3 student takes part in timetabled lessons in each subject each term, with many more opportunities to showcase creative skills and talents during productions, competitions and performances throughout the year.

This includes submitting applications to the Rotary Young Artist of the Year Awards and school clubs including Ashlawn Singers, Orchestra and Jazz Band, Guitar Club, Photography Club and Spanish Club.





“My time at Ashlawn has been amazing. This place has made me the person I am today and I am very, very pleased.”

**Year 9 student**



“My favourite lesson is PE and I have played for the girls’ football team, which I love, as it has enabled me to get to know more people.”

**Year 8 student**



### Inspiring a Passion for Sport

---

We are proud to offer a wide range of sports opportunities for our students to participate in, encouraging them to develop a life-long commitment to living an active and healthy life.

From team sports to individual sporting specialisms, we encourage our students to participate in a range of sporting opportunities each week through the curriculum and beyond.

This includes a dedicated programme of before, during and after school sports clubs and competitions, including netball, rugby, football, handball, badminton, athletics, rounders, softball, cricket, ultimate frisbee and trampolining (to name a few!)

In addition, we also encourage students to explore outdoor adventure opportunities including international ski trips and outward-bound expeditions.





## Outstanding Opportunities

---

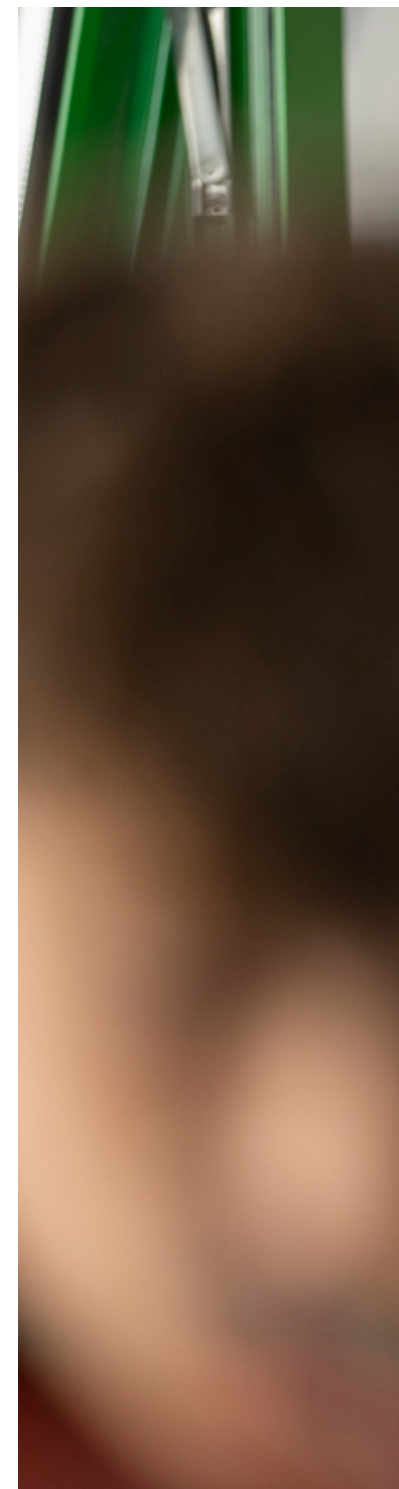
We encourage every student to participate in a wide range of enrichment activities during their time with us.

From science, technology, engineering and mathematics (STEM), to debating, dance and drama – and everything in-between – there is something for everyone to try, learn more about and build their talents in.

This includes a dedicated programme of after school clubs, as well as the chance to participate in the Duke of Edinburgh Award Scheme, World Challenge and special events that take place throughout the year.

Recent opportunities have included UK and overseas residentials and cultural trips, inspirational guest speakers and author visits, as well as exciting sport and arts events, which encourage students to broaden their horizons and explore the world around them.

We also believe that our contribution to the wider community is incredibly important. Our community programmes allow our students to give back to others, planning and running fundraising events and volunteering to support the NHS, local hospices, care homes, food banks and other important causes.





“These groups massively enhance confidence and social skills which is reflected in all areas of day-to-day life.”

**Year 12 student**



“All the teachers and support staff are so supportive and only want the best for every individual.”

**Year 11 student**





## Wellbeing at Ashlawn

---

We understand the importance of young people's emotional wellbeing and how it relates to their ability to learn. We know that good mental health is fundamental to be able to thrive in life.

As a result, every student at Ashlawn School receives a weekly wellbeing session, focusing on tools and strategies for managing their own mental health, as well as raising awareness of positive mental health and the importance of kindness and empathy in supporting the wellbeing of others.

In addition, we have a dedicated Wellbeing Centre, where our Mental Health Lead is a professional counsellor who is also supported by Wellbeing Learning Mentors and staff trained in Mental Health First Aid. Where additional support is required, we work with an external counsellor and provide bespoke programmes of support focussing on issues such as exam stress, anxiety and bereavement.

We also understand that young people often prefer to talk about their wellbeing with their peers, so we have created the Peer Supporters Programme, led by Sixth Form students who are trained in active listening, safeguarding and equipped with general self-care strategies to support younger students.

## Positive Behaviour and Rewards

---

Students at Ashlawn School are expected to model excellence in their behaviour and to take pride in the way they conduct themselves every day.

Our staff are trained in positive behaviour management strategies and the use of restorative approaches to ensure that students can learn in a safe, kind and nurturing environment.

Rewards and recognition play a vital part in encouraging students to fulfil their potential and to demonstrate a love of learning. As a result, rewards are given to students for consistent and improved levels of achievement, both academically and for contributions to the life of the school.

## Student Support

---

The wellbeing of every child is the most important aspect of any school and a young person who feels supported, confident, happy and safe is likely to thrive.

We have an outstanding pastoral team who offer care, guidance and support to all students. This includes supporting students, closely monitoring academic progress and acting swiftly to implement necessary intervention.

The pastoral systems are overseen by Key Stage Leaders, each year group is led by a Head of Year and supported by Behaviour and Welfare Leads, Pastoral Assistants and a Tutor Team.

Successful pastoral care is a partnership between the school and home and Ashlawn is committed to developing and maintaining these strong links by making regular contact throughout the year through revision seminars, parent consultation events and through the assessment system and termly reports.

## Inclusion

---

At Ashlawn, we are proud to be an inclusive school. We aim to enable all students to achieve their potential academically and personally whatever their needs may be.

Our Learning Development Department is at the heart of our school, with an incredible team including a Head of Faculty, SENDCo, Teaching Assistants, Learning Mentors and an Autism Specialist Teacher, who are all on hand to support the individual needs of students.


We also believe it is incredibly important to develop a positive relationship with parents and carers, working together to achieve the best for every young person.





“Throughout my time here at Ashlawn, I was given endless support and encouragement within my subjects, from both the staff and peers surrounding me.”

**Year 13 student**



“Ashlawn is filled with incredible teachers that lend unwavering support to students, whether it be emotional, academic or moral.”

**Year 12 student**

## Sixth Form

---

As a large Sixth Form, we pride ourselves on ensuring all students feel part of the Ashlawn community.

We offer a personalised curriculum that challenges, supports and develops students in all aspects of life preparing them for university applications, apprenticeships or the next step they choose to embrace.

Our Sixth Formers are also encouraged to consider contributing to the Sixth Form Leadership Team and Council, volunteering across the school and within the community and making the most of incredible educational visits in the UK and abroad.



## Transition

---

Transition from primary to secondary education is an exciting prospect and a significant landmark in a young person's educational journey.

Each year, we work alongside parents and carers and primary schools to ensure a smooth transition for students joining us in Year 7.

This includes staff visits to feeder primary schools, to meet students and their current teachers. Dedicated transition events are also held each year, providing the opportunity for new students to meet staff, get to know their classmates and familiarise themselves with their new school.

## How to Apply

---

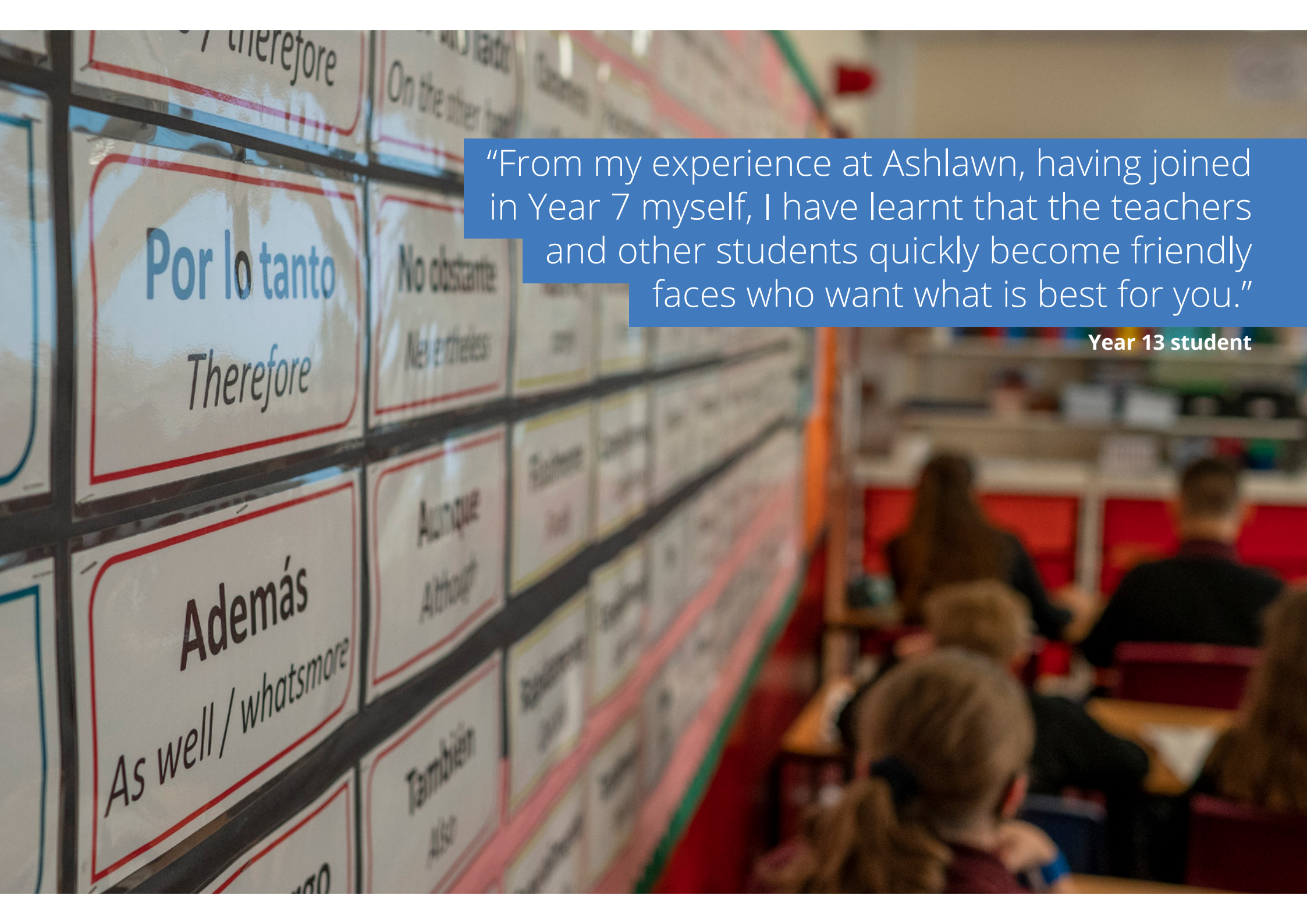
We hope you like what you see and make Ashlawn your first choice.

Applications for a Year 7 place at Ashlawn School can be made through Warwickshire County Council's School Admissions. This includes applications for the 11+ test, which must be made by 30 June 2022.

Information about registration for the Ashlawn Foreign Language test can be found on the school website in the Admissions section. Applications must be made directly to the school using the form provided by 8 July 2022.

For further information about Ashlawn School and to book a tour visit [www.ashlawn.org.uk](http://www.ashlawn.org.uk)





“From my experience at Ashlawn, having joined in Year 7 myself, I have learnt that the teachers and other students quickly become friendly faces who want what is best for you.”

**Year 13 student**



# Ashlawn School

Ashlawn School

Ashlawn Road, Hillmorton, Rugby, CV22 5ET

Telephone: 01788 573425

Email: [info@ashlawn.org.uk](mailto:info@ashlawn.org.uk)

[www.ashlawn.org.uk](http://www.ashlawn.org.uk)

 @ashlawnschoolrugby |  @AshlawnSchool

 Proud to be part of the  
Transforming Lives  
EDUCATIONAL TRUST