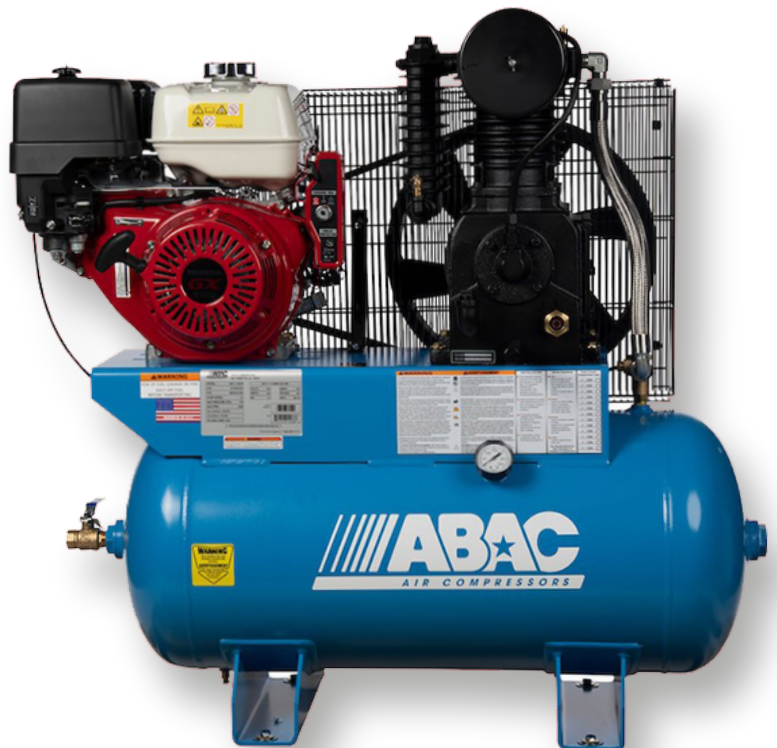




# ABC13-30GH

<b>Tank Layout</b>	Horizontal
<b>Tank Capacity</b>	30H
<b>Pump Configuration</b>	Two-Stage
<b>Power Supply</b>	13 HP Honda
<b>CFM @ Max PSI</b>	25
<b>Max PSI</b>	175
<b>Weight</b>	519 lbs.
<b>Length</b>	21.6"
<b>Width</b>	43.2"
<b>Height</b>	41.7"
<b>Warranty</b>	2 Year

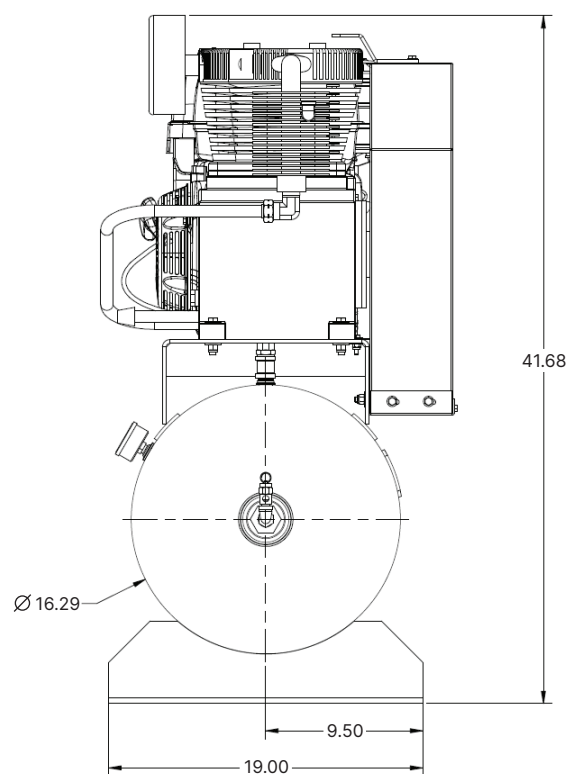
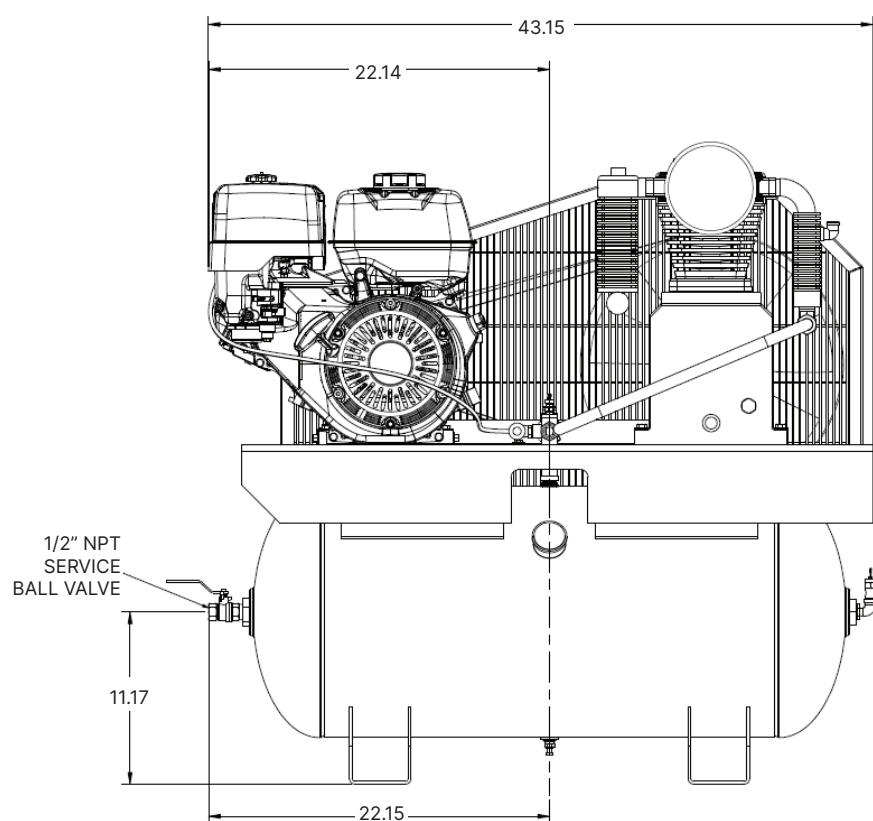
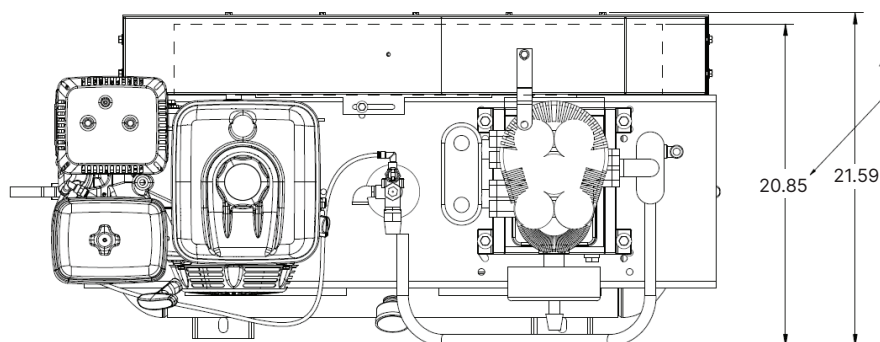


## KEY FEATURES

- // 12V Electric & Recoil Start
- // EZ Pull Tank Drain
- // Fully Enclosed Belt Guard
- // T39 Hybrid Aluminum & Cast Iron Pump

ASSEMBLED IN  
  
**USA**

PN: 2020041755



NOTES:

- 1) ALL DIMENSIONS GIVEN IN INCHES
- 2) ALLOW MINIMUM OF 12 INCHES ON ALL SIDES FOR SERVICE AND COOLING