

# Grayson County

## Community Resource Guide



**Our mission is to build and maintain a coalition to reduce barriers, create opportunities, and educate others by engaging community resources.**

***This guide was produced by GC Thrive***

*\*\*The information included in this directory is continuously being updated. If you would like to submit an update or correction, please email Brandi Lee at [brandi.lee@grayson.kyschools.us](mailto:brandi.lee@grayson.kyschools.us)*

# HELPING OUR COMMUNITY

*Connect, Impact, Thrive*

## Quick Links:

### Food Assistance

[Click here!](#)



### Healthcare

[Click here!](#)



### Parks & Rec

[Click here!](#)



### Education

[Click Here!](#)



GRAYSON COUNTY SCHOOLS  
#WeAreGCconnected

### EVENTS!

[Click Here!](#)



Together, we can make a difference. Join GC Thrive and be part of the solution. Together, we can impact our community in a positive way and create a better life for all community members.



# Abuse & Domestic Violence Resources

Organization	Phone	Address	Website-Click the Link!	More info:
Butterfly Farms Inc	855-239-4647	PO Box 230 Leitchfield, KY	<a href="http://butterflyfarmsky.org/">butterflyfarmsky.org/</a>	pg. 19
SpringHaven	270-234-6652	422 East Poplar St. Elizabethtown, KY	<a href="http://www.springhaveninc.org">www.springhaveninc.org</a>	pg. 45
Silverleaf Sexual Trauma Recovery Services	270-234-9236	751 S. Provident Way Elizabethtown, KY	<a href="http://www.silverleaf.org">www.silverleaf.org</a>	pg. 44

# Aging Resources

Organization	Phone	Address	Website	More info:
Agency on Aging Lincoln Trail Development District	270-737-6082	750 S. Provident Way Elizabethtown, KY	<a href="http://ltadd.org">ltadd.org</a>	pg. 34
Horizon Home Care	270-231-3433	109 East Main St. Leitchfield, KY	<a href="http://forhorizon.com/homecare">forhorizon.com/homecare</a>	pg. 32
Owensboro Health Twin Lakes Geriatric Behavioral Health Unit	270-259-1604	910 Wallace Avenue Leitchfield, KY	<a href="http://owensboro.health.org">owensboro.health.org</a>	pg. 42
Spring View Hospital	270-692-5218	320 Loretto Rd. Lebanon, KY	<a href="http://www.springviewhospital.com">www.springviewhospital.com</a>	pg. 44
Spring View Nursing & Rehab	270-259-4036	718 Goodwin Lane Leitchfield, KY	<a href="http://springviewnr.com/">springviewnr.com/</a>	pg. 45

## Career & Employment

Organization	Phone	Address	Website	More info:
<b>Goodwill Opportunity Center</b>	270-506-4950	243 W. Dixie Ave Elizabethtown, KY	<a href="http://goodwillky.org">goodwillky.org</a>	pg. 25
<b>Hamilton Ryker</b>	270-259-9640	322 S. Main St Leitchfield, KY	<a href="http://www.hamilton-ryker.com">www.hamilton-ryker.com</a>	
<b>TRIO Educational Opportunity Center</b>	270-706-8469	RCP 110, 600 College Street Rd Elizabethtown, KY	<a href="http://www.elizabethtown.kctcs.edu/admissions">www.elizabethtown.kctcs.edu/admissions</a>	pg. 48

## Childcare

Organization	Phone	Address	Website	More info:
<b>Playzone</b>	270-259-2597	204 Marion St. Leitchfield, KY	<a href="https://www.facebook.com">facebook.com</a>	
<b>Tammy's Playschool</b>	270-259-4792	103 Kelly St. Leitchfield, KY	<a href="https://www.facebook.com">facebook.com</a>	

# Counseling & Mental Health

Organization	Phone	Address	Website	More info:
<b>A.I.M. Wellness</b>	270-230-1777	346 S. Main St Leitchfield, KY	<a href="https://aimintegrated.org/">https://aimintegrated.org/</a>	pg.17
<b>Behavioral Health Group</b>	270-234-8180 270-632-3326	2645 Leitchfield Rd. Suite 104 Elizabethtown, KY	<a href="https://www.bhgrecovery.com/">https://www.bhgrecovery.com/</a>	pg. 19
<b>Communicare</b>	270-259-4652	805 Commerce Dr. Leitchfield, KY	<a href="http://communicare.org">communicare.org</a>	pg. 23
<b>Fuller Life Counseling</b>	270-904-5104	5966 Scottsville Rd Bowling Green, KY	<a href="http://fullerlifecounseling.org">fullerlifecounseling.org</a>	pg.27
<b>Rivendell</b>	270-843-1199	1035 Porter Pike Bowling Green, KY	<a href="http://rivendellbehavioral.com">rivendellbehavioral.com</a>	pg. 44
<b>Silverleaf Sexual Trauma Recovery Services</b>	270-234-9236	751 Provident Way Elizabethtown, KY	<a href="http://www.silverleaf.org">www.silverleaf.org</a>	pg. 42
<b>Owensboro Health Twin Lakes Medical Center Behavioral Services</b>	270-230-0212	910 Wallace Ave. Leitchfield, KY	<a href="http://owensborohealth.org">owensborohealth.org</a>	pg. 40

# Addiction/ Drug / Substance Abuse

Organization	Phone	Address	Website	More info:
Al-Anon	270-230-4477	808 Grayson St. Leitchfield, KY	<a href="https://kyal-anon.org/">https://kyal-anon.org/</a>	pg. 18
Behavioral Health Group	270-234-8180	2645 Leitchfield Rd. St 104 Elizabethtown, KY	<a href="http://www.bhgrecovey.com">www.bhgrecovey.com</a>	pg.19
Brightview Health	1-833-510-4357	625 W. Main St Clarkson, KY	<a href="http://brightviewhealth.com/">brightviewhealth.com/</a>	pg. 20
Celebrate Recovery	270-259-4019	208 W. Main St. Leitchfield, KY	none	pg. 21
Grayson Co. Drug Court	270-259-7940	500 Carroll Gibson Blvd. Leitchfield, KY	<a href="http://kycourts.gov">kycourts.gov</a>	pg. 31
Kentucky Christian Recovery	270-516-1601	263 Huntsville Quality Rd Morgantown, KY	<a href="http://kychristianrecovery.com/">kychristianrecovery.com/</a>	pg.36
Owensboro Health Twin Lakes Medical Center Addiction Services	270-230-0212	910 Wallace Ave. Leitchfield, KY	<a href="http://owensborohealth.org">owensborohealth.org</a>	pg. 40
Rivendell Behavioral Health Hospital	270-843-1199	1035Porter Pike Bowling Green, KY	<a href="http://rivendellbehavioral.com/">rivendellbehavioral.com/</a>	pg.41
Lincoln Trail Behavioral Health	270-351-9444	3909 S. Wilson Rd.	<a href="http://www.lincolnbehavioral.com">www.lincolnbehavioral.com</a>	pg.38
reNest	1-844-473-6378	400 Ring Rd. Suite 155 Elizabethtown, Ky	<a href="http://recovered.org">recovered.org</a>	pg. 43
VOA Recovery	502-635-4530	1436 Shelby St. Louisville, KY	<a href="http://www.voamid.org">www.voamid.org</a>	pg. 49

## Education:

Organization	Phone	Address	Website	More info:
<b>Breck/ Grayson Head Start</b>	<b>270-259-4054</b>	<b>201 East Walnut St. Leitchfield, KY</b>	<b><a href="http://www.breckgrayson.org">www.breckgrayson.org</a></b>	<b>pg. 20</b>
<b>Grayson County Schools</b>	<b>270-259-4011</b>	<b>790 Shaw Station Rd. Leitchfield, KY</b>	<b><a href="http://graysoncountyschool.com">graysoncountyschool.com</a></b>	<b>pg. 30</b>
<b>First Baptist Preschool &amp; Kindergarten</b>	<b>270-259-4076</b>	<b>106 E. Walnut St. Leitchfield, KY</b>	<b><a href="#">facebook</a></b>	<b>pg. 26</b>
<b>St. Paul Catholic School</b>	<b>270-242-7483</b>	<b>1812 St. Paul Rd Leitchfield, KY</b>	<b><a href="http://stpauleducation.org/">stpauleducation.org/</a></b>	<b>pg. 46</b>

## Financial Resources:

Organization	Phone	Address	Website	More info:
<b>Abound Credit Union</b>	<b>270-259-4029</b>	<b>1453 Elizabethtown, Rd Leitchfield, KY</b>	<b><a href="http://www.aboundcu.com">www.aboundcu.com</a></b>	<b>pg. 17</b>
<b>The Cecilian Bank</b>	<b>270-259-3127</b>	<b>1625 Elizabethtown Rd Leitchfield, Ky</b>	<b><a href="http://thececilianbank.com">thececilianbank.com</a></b>	<b>pg. 47</b>



# Food Resources:

Organization	Phone	Address	Website	More info:
<b>Grayson County Alliance/ Food Pantry</b>	270-259-4000	2203 Brandenburg Rd Leitchfield, KY	<a href="http://www.gc-alliance.com">www.gc-alliance.com</a>	pg. 28
<b>Grayson County Catholic Outreach</b>	270-287-3776	204 N. Main St. Leitchfield, KY	<u>None</u>	pg. 29
<b>First Baptist Church</b> *3rd Thursday of the month food pantry distribution (from the Alliance)	270-259-4076	106 E. Walnut St. Leitchfield, KY		pg. 26
<b>Tuesday Night Meal @ Leitchfield United Methodist Church</b>	270-259-4019	201 W. Main St.	<a href="https://www.facebook.com">https://www.facebook.com</a>	
<b>Meals on the Bus</b>		Various Locations throughout the summer	<a href="#"><u>Bus_Routes_2024 .pdf</u></a>	

# Insurance Providers

Organization	Phone	Address	Website	More info:
<b>Anthem Medicaid</b>	<b>1-855-690-7784</b>	<b>13550 Triton Park Blvd. Louisville, KY</b>	<a href="http://www.anthem.com/kymedicaid">www.anthem.com/kymedicaid</a>	<b>pg.19</b>
<b>Humana Healthy Horizons</b>	<b>502-269-4375</b>	<b>101 E. Main St.</b>	<a href="http://www.humana.com">www.humana.com</a>	<b>pg.35</b>
<b>Kynect</b>	<b>502-918-1379</b>	<b>11520 Commonwealth Dr. Louisville</b>	<a href="http://kynect.ky.gov">kynect.ky.gov</a>	<b>pg. 35</b>
<b>Passport</b>	<b>1-800-578-0603</b>	<b>410 Southtown Blvd Suite 3 Owensboro, KY</b>	<a href="http://www.molinahealthcare.com">www.molinahealthcare.com</a>	<b>pg. 43</b>

# Healthcare Resources:

Organization	Phone	Address	Website	More info
<b>Leitchfield Pediatrics</b>	270-259-5641	901 Wallace Avenue	<a href="http://www.leitchfieldpediatrics.com">www.leitchfieldpediatrics.com</a>	pg.38
<b>Clear Choices</b>	270-287-9117	123 Commerce Dr. Leitchfield, KY	None	pg. 22
<b>Early Intervention and Consultation Services (EICS)</b>	270-287-0656	635 S. Main St Leitchfield, KY	<a href="http://www.eicsky.com">www.eicsky.com</a>	pg. 25
<b>Grayson County Health Department</b>	270-259-3141	124 E White Oak St Leitchfield, KY	<a href="http://myhealthdepartment.org">myhealthdepartment.org</a>	pg. 33
<b>Owensboro Health Twin Lakes Medical Center</b>	270-259-9400	910 Wallace Ave. Letichfield, KY	<a href="http://www.owensborohealth.org">www.owensborohealth.org</a>	pg. 39-41
<b>Spring View Hospital Senior Behavioral Health</b>	270-692-5218	320 Loretto Rd. Lebanon, KY	<a href="http://www.springviewhopsital.com">www.springviewhopsital.com</a>	pg. 46

# Support Services

Organization	Phone	Address	Website	More info
Department for Community Based Services	270-766-5099	916 N. Mulberry St. Suite 140 Elizabethtown, KY	<a href="http://www.kyfaces.ky.gov">www.kyfaces.ky.gov</a>	pg. 24
Division of Reentry	270-307-9246	489 S. Main St Leitchfield, KY	<a href="https://corrections.ky.gov/Reentry/Pages/region2.aspx">https://corrections.ky.gov/Reentry/Pages/region2.aspx</a>	pg.24
Grayson County Family Resource Youth Services Center	270-287-0127	GC Schools	<a href="http://www.graysoncountyschools.com">www.graysoncountyschools.com</a>	pg. 32
Grayson County Center for Women's Ministries	270-230-9925	501 Mill St. Leitchfield, KY	<a href="http://www.cwmhope.org">www.cwmhope.org</a>	pg. 29
The Chad Lake Foundation	270-363-6283	N/A	<a href="http://www.thechadlakefoundation.org">www.thechadlakefoundation.org</a>	pg. 47
Tri County CASA	270-438-8394	500 Carroll Gibson Blvd. Leitchfield, KY	<a href="http://www.tricountycasaky.com/">www.tricountycasaky.com/</a>	pg. 48

# Social Organizations

Organization	Phone	Address	Website	More info
<b>Grayson County Extension Services</b>	270-259-3492	64 Quarry Rd. Letichfield, KY	<a href="https://grayson.ca.uky.edu/program-areas">https://grayson.ca.uky.edu/program-areas</a>	pg. 32
<b>Grayson County Homemakers Association</b>	270-259-3492	64 Quarry Rd. Letichfield, KY	<a href="https://grayson.ca.uky.edu/fcs/homemakers">https://grayson.ca.uky.edu/fcs/homemakers</a>	pg. 33
<b>Master Gardeners</b>	270-259-3492	64 Quarry Rd. Letichfield, KY	<a href="http://www.facebook.com">www.facebook.com</a>	pg. 38
<b>Grayson County Unstoppables Special Olympics Team</b>		676 Grindstone Rd. Clarkson, KY	Find us on Facebook @Grayson County Unstoppables	pg. 49

# Emergency/ Hotlines

Organization	Phone	Address	Website	More info
Grayson County EMS	270-259-9601	110 North Main St.		pg. 31
Emergency Assistance	911			
Suicide & Crisis Hotline	988		<a href="https://988.ky.gov/">https://988.ky.gov/</a>	
Local Help	211		<a href="http://www.211.org/">www.211.org/</a>	

# Things to do!

Organization	Phone	Address	Website	More info:
<b>Alice Theater</b>	<b>270-899-9944</b>	<b>82 Public Square Leitchfield, Ky</b>	<b><a href="http://alexanderhotelky.com/alicetheatre">alexanderhotelky.com/alicetheatre</a></b>	
<b>Annual Fiddle Festival</b>			<b><a href="http://www.twinlakesfiddler.com">www.twinlakesfiddler.com</a></b>	
<b>Aquatic Center</b>	<b>270-259-4420</b>	<b>201 East Carroll Gibson Blvd Leitchfield, KY</b>	<b><a href="http://www.visitleitchfield.com">www.visitleitchfield.com</a></b>	
<b>Leitchfield Tourism</b>	<b>270-259-5587</b>	<b>425 S. Main Street</b>	<b><a href="http://www.visitleitchfield.com">www.visitleitchfield.com</a></b>	
<b>Grayson County Chamber of Commerce</b>	<b>270-259-5587</b>	<b>425 S. Main Street</b>	<b><a href="http://www.graysoncountychamber.com">www.graysoncountychamber.com</a></b>	<b>pg. 30</b>
<b>Public Library</b>	<b>270-259-5455</b>	<b>163 Carroll Gibson Blvd. Leitchfield, KY</b>	<b><a href="http://www.graysonpl.org">www.graysonpl.org</a></b>	
<b>Leitchfield Parks &amp; Recreation</b>	<b>270-259-4034 ext. 100</b>	<b>515 S. Main St. Leitchfield, KY</b>	<b><a href="http://www.leitchfield.gov">www.leitchfield.gov</a></b>	<b>pg. 37</b>

## Transportation:

Organization	Phone	Address	Website	More Info:
Central Ky CATS	270-692-9313		<a href="http://www.ckcac.org">www.ckcac.org</a>	

## Utilities/ Home

Organization	Phone	Address	Website	More Info:
Amazing Grace Home Inspections	270-777-8743	1914 Sunbeam Rd Leitchfield, KY 42754	<a href="http://www.amazinggracehomeinspection.net/">www.amazinggracehomeinspection.net/</a>	pg.16
City of Leitchfield	270-259-4034	515 S. Main St Leitchfield	<a href="http://leitchfield.ky.gov">leitchfield.ky.gov</a>	pg. 19
Grayson County PVA Office	270-259-4838	125 E. Market St Leitchfield, KY	<a href="http://graysoncountypva.com">graysoncountypva.com</a>	pg. 32







Leitchfield Branch: 1453 Elizabethtown Rd. Leitchfield, KY 42754

**(270) 259-4029 ext. 6566**

**Services Provided:**

- Home Loans
- Vehicle Loans
- Checking Accounts
- Savings Accounts
- Money Market Accounts
- CD's
- Financial Education
- Investment Services
- Credit Cards

**Hours:**


Monday - Friday 9-5:00 cst.  
Saturdays: 9:00- 12:00 cst.

---

## A.I.M WELLNESS

Offices in Leitchfield, Radcliff and Munfordville KY

346 South Main St. Leitchfield, KY 42754

 (270) 230-1777

270 524 0259

[tlbhwoffice@tlbhwo.org](mailto:tlbhwoffice@tlbhwo.org)

**Services Provided:**

- Quality Mental Health Services
- Primary Care
- Case Managers
- Community Support Associates
- EMDR
- Peer Support Specialists
- IOP Program
- Occupational Therapy
- Applied Behavior Analysis





Location: 808 Grayson St.  
Leitchfield, KY 42754

\*Basement Door

Day & Time: 7:00 pm (cst)  
every Tuesday evening

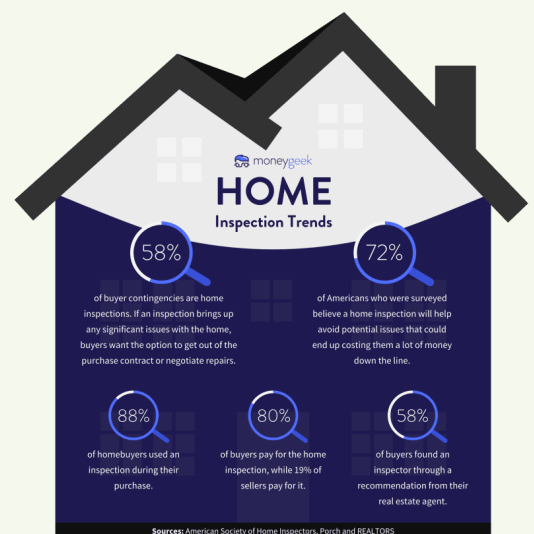
*The Al-Anon family groups are a fellowship of relatives and friends of alcoholics who share their experience, strength, and hope in order to solve their common problems. We believe alcoholism is a family illness, and that changed attitudes can aid recovery. This is a 12 step support group with a goal of strengthening and guiding participants through lifes difficulties.*

## Amazing Grace Home Inspection

1914 Sunbeam Rd Leitchfield KY 42754  
270-777-8743

### Services Provided:

- Residential Home Inspections
- Radon Testing
- Pre-purchase
- Rental Units
- Manufactured & Mobile Homes





1-855-690-7784

Hours: Monday - Friday 7am -7pm

\*Crisis Hotline 1-855-661-2025

Dental Care: 1-855-343-7405

EyeQuest (EyeCare/ Glasses) 1-855-343-7405

**Services Provided:** With Anthem Medicaid you get benefits designed to make a difference in your life. Focused on health, doctors, hospitals, specialists and other providers near you. 24/7 health advice, even on holidays. 24/7 NurseLine immunizations, Behavioral health Crisis Hotline, Pharmacy services, Dental care and more!

---

## Behavioral Health Group

\*Walk-ins Accepted

Call 270-234-8180

Hours:

Monday - Friday 5am -12:30 pm

Saturday 6:30-8:30 am

Closed Sundays

**\*Services provided: Substance abuse treatment including Medicated Assisted Treatment, Addiction Counseling & Therapy: Behavioral, Individual, group & family**

# Breckenridge- Grayson Head Start

270-259-4054



Head Start & Early Head Start  
Early Childhood Development

Providing education to  
children 12 months- 5 years old  
who reside in Breckenridge or  
Grayson county

*\*based on qualifications*



1-833-510-HELP

24/7 Help

Office Hours: \*Walk-ins Accepted

Mon- Friday 8am-3pm

625 W. Main Street

Clarkson, KY 42726

**Services Include: Addiction treatment including Outpatient Medication Assisted Treatment, individual & group counseling, telehealth and more**

## OUR TREATMENT MODEL



Medication Assisted  
Treatment



Counseling



Group Therapy



Social Support



1-855-239-4647

PO Box 230 Leitchfield, KY 42754

**Hours: Monday-Friday 8-5pm**

*We offer safe housing, care coordination, victim advocacy, and outreach to survivors of domestic violence and human trafficking. We have a residential program for women of sex trafficking.*

*We believe all women can embrace who they are, can define their future, and can change the world.*

---

## **Celebrate Recovery**

**Meets Wednesday Nights from 6pm -8:00pm CST**

**208 West Main St.**

**Leitchfield, KY 42754**

**\*For more info please call 270-259-4019**

---

## **City of Leitchfield**

**259-4043**

**Hours: Monday -Friday 7:00-4:00**

**Providing Gas, Sewer & Water to Residents**



# City of Leitchfield Tourism Commission

259-5587

Hours: Monday -Friday 9:00 am-4:00 pm



[Click to Download Guide!](#)

---

## Clear Choices

Program for new & expectant mothers

call 270-287-9117

Hours; Mon- Thur 9 am - 2:00 pm

### Services:

- Pregnancy
- Parenting & Life Skill education
- Goal Setting
- Bible Study
- Mentoring
- Pregnancy & Baby Supplies





**Mental Health & MORE!**

**Call 270-259-4652**

**24/7 New Appointments: 1-888-344-8066**

**805 Commerce Drive  
Leitchfield, KY 42754**

**Hours;**

**Monday/ Wednesday/Friday 7 am-4:30pm**

**Tuesday/ Thursday 7am-5:30 pm**

**Services:**

- **Outpatient Mental Health**
- **Substance Abuse (drug & alcohol)**
- **Parenting classes**
- **School-based therapy**
- **Support Groups**
- **Case Management**
- **Peer Support**
- **Supportive Employment**
- **Med Management**

# Department for Community Based Services

## Foster Care & Adoption

Call: 270-766-5099

Hours: 8:00 am - 4:30 pm EST

916 N. Mulberry St. Suite 140

Elizabethtown, KY 42701

### Services Provided:

Foster care recruitment and certification, information, education, and support of foster homes.

---

## Division of Re-Entry

*(Dept. of Corrections Probation & Parole)*

270-307-9246

489 S. Main St. Suite 5

Leitchfield, KY

Hours: Mon- Friday 7:00 am-3:30 pm CST

### Services Provided:

Providing resources for the justice involved, whom are currently under supervision with Probation and Parole, in order to empower individuals with resources, support, and programming, to promote successful reintegration into the community.





270-287-0656

635 South Main St

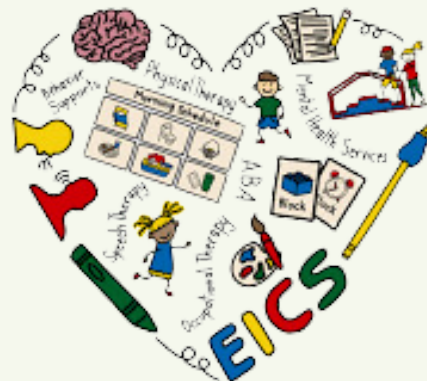
Leitchfield, KY 42754

Hours:

Monday - Friday 8am -5:00pm CST

## Services Provided:

- Occupational Therapy
- Speech Therapy
- Physical Therapy
- Applied Behavior Analysis
- Mental Health Counseling
- Targeted Case Management





FULLER LIFE COUNSELING PARTNERS

*breathe fuller | relax fuller | love fuller*

Call: 1-270-904-5104

5966 Scottsville Rd. Suite 7

Bowling, Green KY 42104

\*Hours: Mon-Friday 8:00-5:00 CST

**Services Provided:**

Individual counseling, couples counseling, family therapy, anger management, target case management, substance abuse counseling, medication management, peer support, substance use IOP, online counseling, parenting, DUI services.



Call: 270-506-4950

243 W. Dixie Ave

Elizabethtown, KY 42701

\*Hours: Mon- Friday 8am- 4:30 pm EST

**Services Provided:**

- Job coaching
- Soft skills academy
- Financial & budgeting support
- Peer support and other certification assistance

# First Baptist Church

Sunday School - 9am

Worship - Sunday @ 10 am

270-259-4076

106 E. Walnut St

Leitchfield, KY 42754

**\*We work with the Grayson County Alliance (food pantry) to serve as a distribution location the 3rd Thursday of every month.**



Private, Christian Education for pre-school & Kindergarten.

School day is 8am - 3pm.

Childcare is available until 5:15 pm.

\*Enrollment begins in late March for the upcoming school year

For more info call: 270-259-6838



# Grayson County Alliance



## **\*Hours:**

Monday -8:00-4:00

Tuesday -8:00-4:00

Wednesday -8:00-11:00am

Thursday -8:00-4:00

Friday - -8:00-11:00am

**All GCA programs are FREE**

**\*Food pantry services by appointment on**

Tuesdays 9:00-12:00

Thursdays 1:00-4:00 pm

## Other Services:

- Free Tax Filing (Mid-January - April 15th by appointment - Mondays 8:30-6:00pm during tax season)
- Financial Literacy classes
- Nutrition Classes
- More!



**Volunteers utilized All Year Long  
and greatly appreciated!**



Call: 270-287-3776  
204 North Main St  
Leitchfield, KY 42754

\*We provide assistance with food, shelter & warmth

---



**CWM**  
Center for Women's Ministries®

**Call: 270-230-9925**  
**501 Mill St**  
**Leitchfield, KY 42754**

**Hours:**  
**Tuesdays 9:00-1:00pm**  
**Thursdays - 9:00-3:00 pm**

**Services include:**

- Peer counseling
- Support groups
- Bible studies
- Classes for emotional & spiritual growth

# Chamber



# of Commerce

Call us: 270-259-5587  
425 South Main Street

Hours:

Monday - Friday  
9:00 am- 4:00pm

## Services:

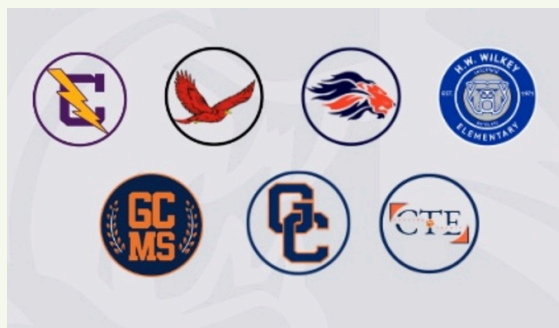
- Chamber Bucks (gift certificates for local businesses)
- Monthly Chamber Meetings
- Networking for local businesses
- Workforce Development



## GRAYSON COUNTY SCHOOLS

**Providing Public Education for all  
students in Grayson County.**

**Serving over 4,000 students in Preschool - 12th grades**



**Contact: 259-4011**

Board of Education: 790 Shaw Station Rd  
Leitchfield, KY 42754

# Grayson County Drug Court

Contact Us: 259-7940  
500 Carroll Gibson Blvd.  
Leitchfield, KY 42754

Hours: Monday - Friday 8:00 am-4:00pm CST

**Providing non-clinical case management  
to justice involved individuals to improve quality  
of life.**

---

## Grayson EMS

Hours: Monday - Friday 8:00 am-4:00pm CST



**259-9601**

**110 N. Main St. Leitchfield, KY**

# Grayson County Extension Services

Call us: 259-3492  
64 Quarry Rd. Leitchfield, KY  
Hours: Mon-Friday 8:00am-4:30

## Services Provided:

- 4-H
- Youth Development
- Agriculture Resources
- Family & Consumer Sciences
- Nutrition Education



---

## Grayson County Family Resource Youth Service Centers



Clarkson FRYSC: 270-242-9616

Wilkey FRYSC: 270-259-9681

Caneyville FRYSC: 270-879-3710

High School FRYSC: 270-287-0127

Hours: Mon-Friday 7:00am-4:00pm \*or by appointment

Each local school has a family resource youth center which serves the needs of their students and family client population. The Goal of FRYSC is to meet the needs of all children to enhance student academic success.

## Specific Services Include:

- Preschool child care
- After school child care
- Family Literacy
- Family Crisis and Mental Health Counseling
- Health services & referrals
- Career exploration & development
- Referrals to health and social services
- Substance Abuse Education and Counseling



# Grayson County Health Department

Call us: 270-259-3141

124 E. White Oak St. Leitchfield, KY

As a public health department, we strive to prevent, promote and protect wellness in our community through our clinic and various programs and departments.

## Services Provided:

- Breastfeeding Support
- Family Planning
- WIC
- Mental Health
- CPR Training
- Tobacco Cessation
- Restaurant Inspections
- Permits and more



## Hours:

Monday, Tuesday, Wednesday-  
7:30am-4:30 pm  
Thursday - 7:30am -4:00 pm  
Friday 7:30-11:30 am  
\*Closed for Lunch 12:00-12:30

---

## Grayson County Homemaker Association

Call us: 259-3492

64 Quarry Rd. Leitchfield, KY

GC Homemakers is a volunteer organization that works to improve the quality of life for families and communities through leadership development, volunteer service, and education while promoting social interaction for members.



# Grayson County PVA Office

Call us: 259-4838  
125 E. Market St  
Leitchfield, KY

## Services Include:

Property assessment in Grayson County

---



Call us: 270-231-3433  
Address: 109 East Main St.  
Leitchfield, KY

**Services include: Elderly assistance with cleaning, laundry, meal preparation, personal care, errands and transportation up to 40 hours a week.**



# Humana

Healthy Horizons™  
in Kentucky

Call us: 502-269-4375

## Kentucky Medicaid

Humana Kentucky Medicaid is now Humana Healthy Horizons® in Kentucky. A horizon is where the earth meets the sky, and Humana Healthy Horizons is where we meet you and provide you with the care and support you need—so you have more time to focus on what you love. While you're here, learn more about your coverage and benefits, find forms you need, and more.



Call us: 502-918-1379  
11520 Commonwealth Dr.  
Louisville, KY

\*Monday - Friday 8:00- 4:00 EST

**Kentucky state benefits for qualified individuals and families.  
Kynect assists in Medicaid benefits, KCHIP, SNAP and more.**

# Kentucky Christian Recovery

## Making A Difference, One Life at a Time

Providing Inpatient substance abuse help

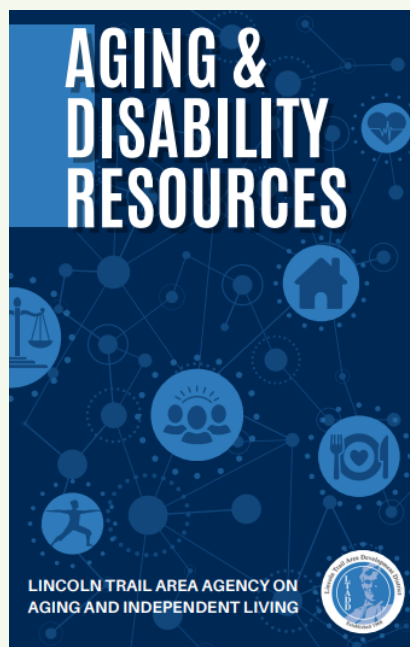
Call us: 270-516-1601  
236 Huntsville Quality Rd  
Morgantown, KY 42261

---

## Lincoln Trail Area Agency on Aging and Independent Living

Call us: 270-737-6082  
750 S.Provident Way  
Elizabethtown, KY 42701  
Hours: Monday - Friday 8:00 am - 4:30 pm EST

[click to view services](#)





# Leitchfield Pediatric Clinic

901 Wallace Ave  
Leitchfield, KY 42754  
270-259-5641



**Services: Pediatric care including preventative care (well checks) & acutely ill patients ages birth-21 years. Management of chronic pediatric conditions as well as ADHD and behavioral health.**

## HOURS OF OPERATION

Monday	Tuesday	Wednesday	Thursday	Friday	Saturday	Sunday
7:30 am - 6:00 pm	7:30 am - 6:00 pm	7:30 am - 6:00 pm	7:30 am - 6:00 pm	7:30 am - 6:00 pm	8:00 am - 11:00 am	Closed

## Parks and Recreation

Call us! 270-259-4034 ext. 100

\*Office hours: Mon-Friday 7:00 - 4pm CST

515 South Main St.  
Leitchfield, KY 42754

**Outdoor Fun  
for everyone!**





## Services Provided:

**Mental Health & Substance Abuse treatment for adolescents, adults, military, veterans and first responders**



### Lincoln Trail Behavioral Health System

📍 3909 S. Wilson Road Radcliff, KY 40160

📞 Local Phone Number: [270-351-9444](tel:270-351-9444) | Toll Free Phone Number: [800-274-7374](tel:800-274-7374)



Kentucky Extension  
Master Gardener

## Master Gardener's Association

Contact: Whitney Carmen  
270-259-3492



### Annual Events/ Services:

- Master Gardener Training Program
- Plant fair and Spring Fling
- Community Garden project
- Square Foot Gardening
- School & youth horticulture programs
- Educational opportunities in horticulture

## Owensboro Health Medical Group in Grayson County

### Primary Care

Family  
Medicine

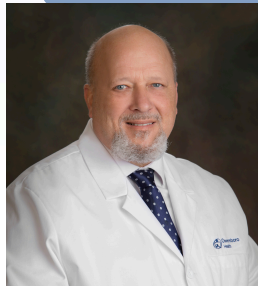
9847 Elizabethtown Road  
Big Clifty, KY 42712  
270-242-2000



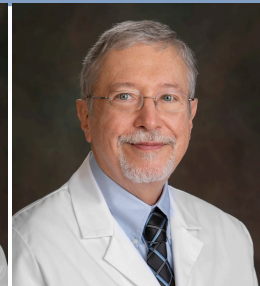
Heather Parsley, APRN

Rural Health Clinic

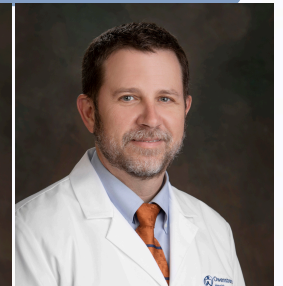
301 Sunset Drive  
Caneyville, KY 42721  
270-879-3711



Gregory Koo, MD



Robert McClure, MD



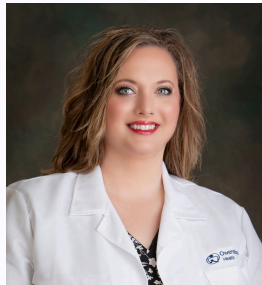
Todd Bullock, APRN

Family Medicine

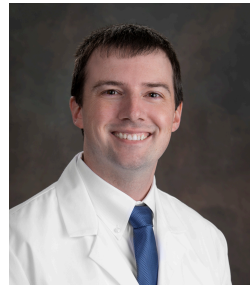
912 Wallace Avenue, Suite 102  
Leitchfield, KY 42754  
270-259-8888



Cari Johnson, APRN



Jamie Neihaus, APRN



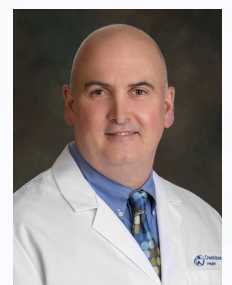
Blake Clemons, APRN



Aayushma Shah, MD



Ashley Flener, APRN



Clay Vincent, APRN

Internal Medicine

912 Wallace Avenue, Suite 101  
Leitchfield, KY 42754  
270-259-9316

Urgent Care

1895 Elizabethtown Rd  
Leitchfield, KY 42754  
270-230-0182



Cindy Veyel, APRN



Cindy Overby, APRN



Amie Evans, APRN

## Owensboro Health Medical Group in Grayson County

### Specialty Care

Addiction  
Services  
270-230-0212

Behavioral  
Health  
270-230-0212

Cardiology  
270-200-4536

Ear, Nose & Throat  
270-259-2714

Hematology &  
Oncology  
270-688-3445



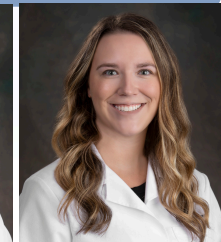
Kristin Buck, APRN



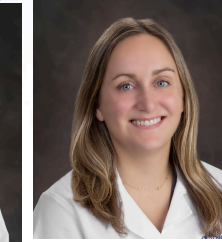
Adam Smith, DO



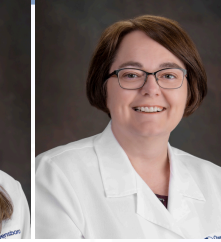
David Charles, DO



Morgan Bunch, APRN



Casey Hay, MD



Cindy Overby, APRN



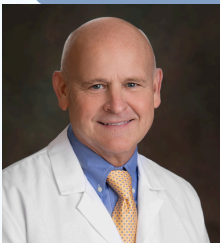
Megan Fisher, APRN

Obstetrics & Gynecology  
270-259-2700

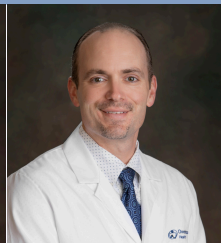
Orthopedics & Sports Medicine  
270-230-0124

Podiatry  
270-200-4545

Pulmonology  
270-200-4536



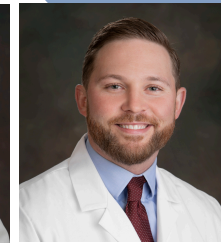
Sam Buck, MD



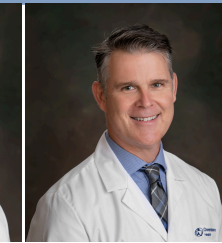
Mark Lee, DO



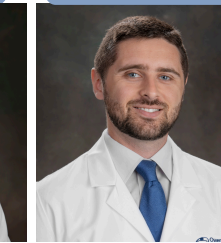
Jenny Hardestry,  
APRN



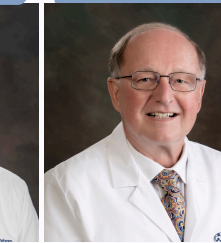
Isaac Miller, MD



Ted Rogers, MD



Nathaniel Gastaldo,  
DPM



Frank Taylor, MD

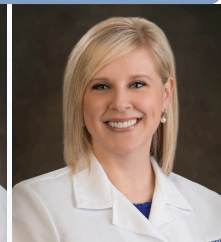
Sleep Medicine  
270-200-4536

Surgical Specialist  
270-259-3035

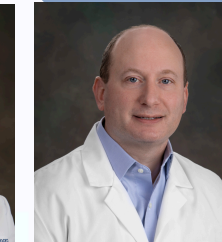
Wound Care  
270-259-1612



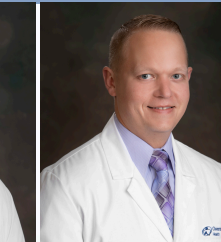
Abinash Joshi, MD



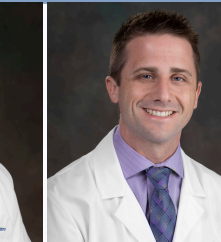
Emily Freeman,  
APRN



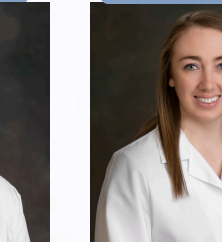
Thomas Schory, MD



Clint Kaufman, DO



Marcus Moseley, DO



Jennifer Hughes, APRN



# Twin Lakes Services

Located on-site in Leitchfield, KY



## Addiction Services

- Medical Stabilization
- Maternal Opioid Medical Stabilization (MOMS)
- Medication-Assisted Treatment (MAT)
- Medication-Assisted Treatment (MAT-C) Clinic

## Cardiac Services

- Cardiac Rehabilitation
- Cardiac Assessment
- Stress Testing
- Holter Monitoring
- Echocardiography
- Nuclear Stress Testing
- Electrocardiogram

## Diagnostic Imaging

- CT Scan Low Dose
- Diagnostic Radiology
- Interventional Radiology
- 3D Mammography
- Upright Stereotactic Biopsy
- Bone Density
- Metabolic Body Composition
- Nuclear Medicine
- MRI
- Ultrasound /3D Ultrasound
- Vascular
- Fluoroscopy

## Emergency Services

- 24 Hour Emergency Room
- Level 4 Trauma Center
- Heliport
- Adult & Pediatric Emergency Care
- TNCC Nursing

## Hospitalist Services

- Available 24/7
- Specialty Physician Coordination
- Continuity of Care

## Infusion Clinic

- Blood Product Administration
- IV Medications & Infusions
- PICC/ Port Management
- Cortisol Stimulation Test

## Inpatient Geriatric Behavioral Health:

- Serving adults ages 60 and over
- Inpatient stabilization for acute behavioral health needs, including dementia
- Group therapies
- Medication management

## Inpatient Medical Care Services

- Acute Disease Management
- Critical Care
- Swing Bed Program
- Post-surgical Care
- Pediatric Care
- 24 Hour Observation
- Remote Telemetry

## Laboratory

- Hematology
- Blood Bank
- Microbiology
- Chemistry

## Maternity Services

- Labor and Delivery
- Newborn Nursery
- Postpartum Care
- Private Rooms
- Lactation Support
- Rooming-in Care
- Birth Tissue Donation
- Kangaroo Care

## Nutrition & Weight Management Services

- Outpatient Nutrition Counseling
- Diabetes Education
- Inpatient Assessment

## Pain Management Services

- Epidural Steroid Injection
- Medial Branch Block/Radio Frequency Ablation
- Spinal Cord Stimulation
- Peripheral Nerve Blocks
- Joint Injection
- Trigger Point Injection
- Medication Management

## Pulmonary & Respiratory Services

- Arterial Blood Gas Analysis
- BiPap Management
- EEG
- Ventilator Management
- Aerosol Medication

## Rehabilitation Services

- Physical & Occupational Therapy
- Ergonomic Analysis/Training
- Balance Training
- Bell's Palsy Treatment (Acute)
- Back/Neck Rehabilitation
- Shoulder/Elbow Rehabilitation
- Hip/Knee/Ankle/Foot Rehabilitation
- Sports Injury Rehabilitation
- Manual Therapy (Spine/Extremities)
- Fitness Center
- Stroke & Other Neurological Rehabilitation
- Hand Rehabilitation/Splinting
- Vestibular Rehabilitation
- Speech Therapy
- Neurological Disorders (Stroke & Head Trauma)
- Voice Disorders (Prolonged Hoarseness & Vocal Quality)
- Speech Sound Disorders
- Developmental Delay Communication (Adult & Pediatric)
- Swallowing Disorders (Adult)

## Sleep Center

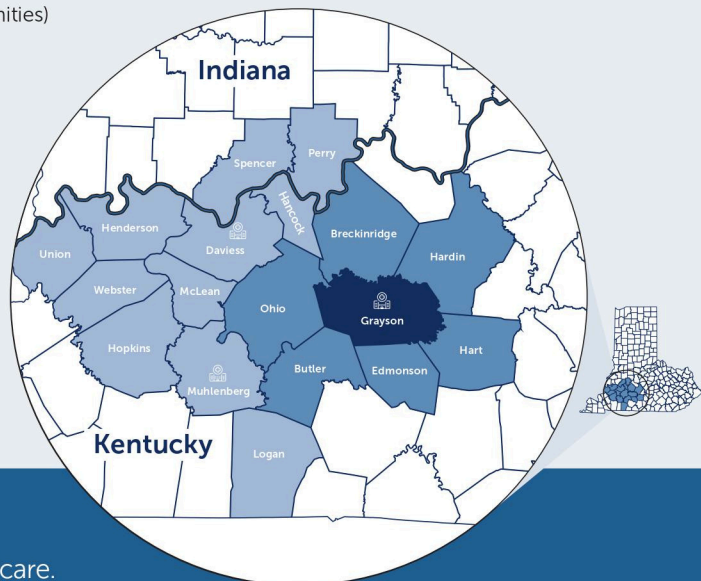
- Comprehensive In-Lab Studies
- Home Sleep Studies
- Pediatric Studies
- Chronic Sleep Disorders
- Sleep Apnea
- Narcolepsy
- Restless Leg Syndrome
- American Academy of Sleep Medicine Accreditation

## Surgical Services

- Ear, Nose & Throat
- General
- Endoscopy
- Laparoscopy
- Orthopedic
- Podiatry
- Colonoscopy
- Obstetrics and Gynecology
- Pain Blocks
- Laser
- Pre-Admission Testing

## Wound Care Services

- Advanced Wound Management for Chronic wounds
- Debridement
- Application of Skin Substitutes
- Specialized Dressings
- Hyperbaric Oxygen Therapy
- Total Contact Casting
- Offloading Footwear
- Inpatient Assessment
- Nutrition Management
- Negative Pressure Wound Therapy



Owensboro Health reaches an 18-county area, serving nearly 500,000 in Western Kentucky and Southern Indiana. Owensboro Health offers regional patients numerous ways to access and benefit from advanced care.

## Geriatric Behavioral Health Unit

We are a secured, 12 bed inpatient behavioral health unit located within the Owensboro Twin Lakes Medical Center.

Call us for more info:  
270-259-1604  
910 Wallace Avenue  
Leitchfield, KY 42754

### For patients 60 and older Services Include:

- Alzheimers/ dementia patient care
- Care for patients suffering from: severe depression, excessive worry or anxiety, confused or delusional thinking
- Care for those with an inability to complete daily routines or difficulties in decision making resulting in danger to self or others
- Medication Management

*Healthier*  
together



**Call us: 270-698-9371**

**Member Services: 1-800-578-0603**

*Including: Finding medical providers, benefits,  
rewards, getting new cards and more.*

**410 Southtown Blvd.**

**Suite 3**

**Owensboro, KY 42303**

Hours:

Mon-Friday 9:00 am -5:00 CST

---

## **reNest**

**Substance abuse treatment program with sober living**

24/7 help: 270-319-9899 or  
1-844-473-6378

400 Ring Rd Suite 155  
Elizabethtown, KY



Acute inpatient hospitalization for ages 5-adult. Substance abuse treatment for adolescents and adults. Partial hospitalization for children, adolescents and adults. Intensive outpatient for adults.

Call if you need help! 24/7  
1-270-843-1199

1035 Porter Pike  
Bowling Green, KY 42103



**We function as a children's advocacy center and a rape crisis center (serving all 8 counties in the Lincoln trail area). All services are FREE and provided in a friendly, safe and nurturing environment. In addition, Silverleaf provides community education about sexual abuse and in an effort to end all types of sexual violence.**

24/7 Help / Crisis Intervention  
CALL: 1-877-672-2124

Office Hours:  
Monday- Friday 8:30-5:00

**Other services include: mental health therapy, victim/ family advocacy, forensic interviews, medical examinations, referrals and more**



**Domestic violence advocate providing services  
and court advocacy for victims & survivors.**

Helpline: 1-270-769-1234

24/7

422 East Poplar St.

Elizabethtown, KY 42701



A 71 bed facility providing 24 hour care for elderly patients. Additional services include: speech therapy, physical therapy, fall prevention, wound care, and much more!

Call for inquiries: 270-259-4036

718 Goodwin Lane

Leitchfield, KY 42754



## Senior Behavioral Health

CALL 270.692.5210

Providing behavioral health treatment including anger, anxiety/depression, dementia treatment and more for aging adults.

24/7 Help: 1-270 692-5218

320 Loretto Road  
Lebanon, KY 40033



## SAINT PAUL CATHOLIC SCHOOL



1812 St. Paul Rd  
Leitchfield, KY 42754  
270-242-7483

Providing Catholic Christian Education for students K-8th grade with an emphasis on small class sizes.



Multiple locations in Leitchfield  
76 Public Square  
270-259-3127

**Hours:**

**Mon- Thur 8-4:00**

**Friday - 8:00-5:00**

**Closed Sat & Sun**

**Independently owned community bank in KY with 19  
banking centers across Kentucky.**

---

**CHAD LAKE  
FOUNDATION**



**INMATES MATTER**

**Providing support groups, transportation, resources,  
classes, trainings and more to individuals who have  
struggled with addiction or who have been involved with  
the criminal justice system.**

**24/7 Help: 270-363-6283**



Volunteers (court appointed advocates) who work with abused, neglected or dependent children in the court system.

**270-438-8394**

**500 Carrol Gibson Blvd.**

**Letichfield, KY 42754**

---

**TRIO**

EDUCATIONAL OPPORTUNITY CENTER

**Academic advising and counseling, assistance with college & career training entry, as well as assistance with college applications and financial aid applications.**

**270-706-8469**

ECTC Campus

RPC 110

600 College St.

Elizabethtown, KY 42701

Hours:

Monday - Friday 8:30 am - 4:30 pm



# VOA Recovery

Residential addiction recovery treatment for men, pregnant or parenting women. Women can bring all children under 18 to the facility.

24/7 Help: 1-502-635-4530

1436 S. Shelby St.

Louisville, KY 40217

---

*Special  
Olympics*



## **Grayson County Unstoppables Special Olympics Team**

For More Info: 270-230-7738

Mailing Address:

676 Grindstone Rd Leitchfield, KY 42745

**Community organization providing  
bowling and track and field sports for  
kids & adults with special needs.**