



CB SERIES

OIL LUBRICATED HIGH PRESSURE,
RECIPROCATING BOOSTER COMPRESSORS
10-40 HP

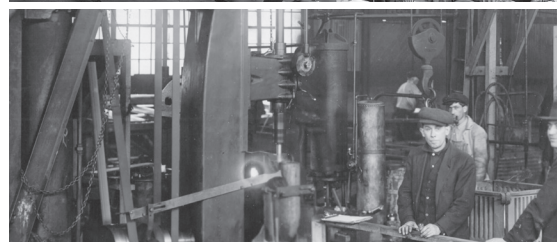


FSCURTIS



**SOME COMPANIES ARE FOUNDED ON HARD WORK.
OTHERS ARE FOUNDED ON IDEALS.**

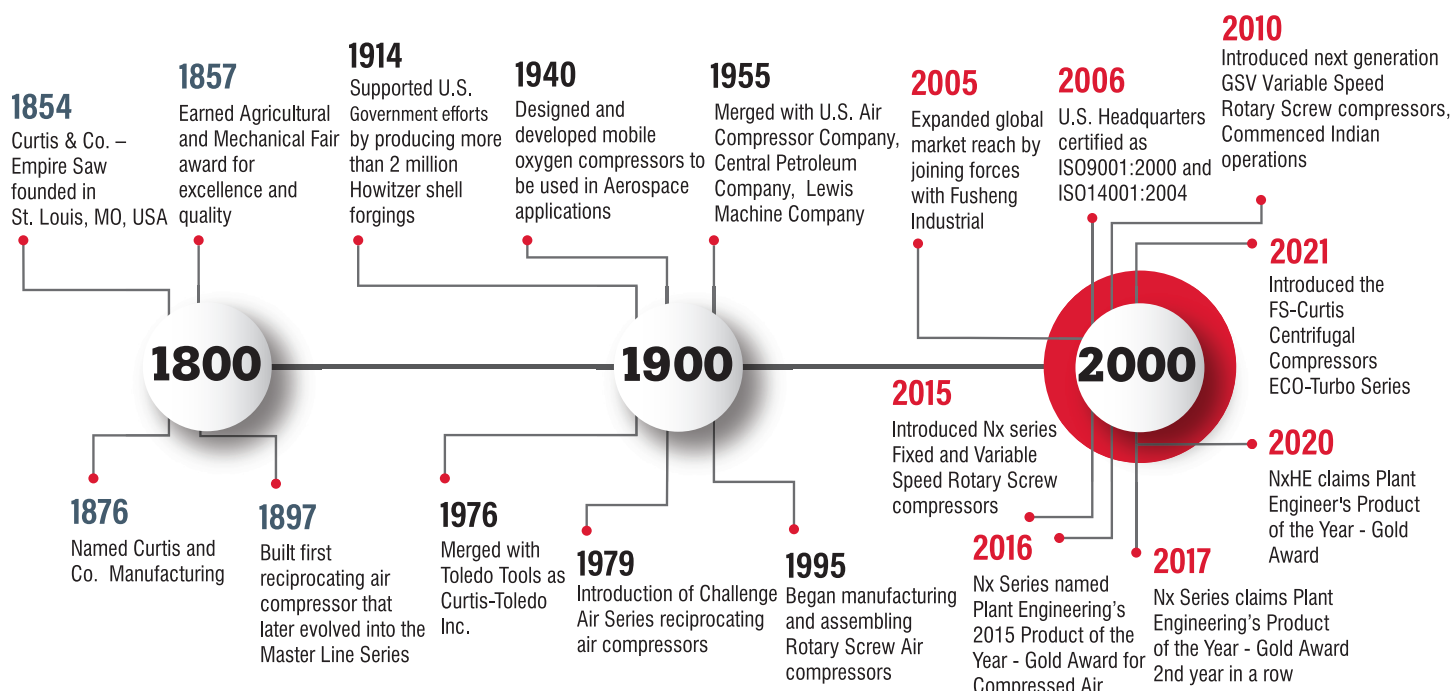
**FS-CURTIS WAS
FOUNDED ON BOTH.**



More than 170 years ago, the FS-Curtis way of doing business was established through two key commitments: a dedication to building quality products and a dedication to responsive customer service.

Over the decades, the company and its products have evolved through innovation and new technologies. But those commitments to quality and service remain unchanged. Today, just as in 1854, FS-Curtis customers can depend on our products for reliable, long-term service. Equally as important, they can depend on getting the same from our people.

A HISTORY OF EXCELLENCE



INDUSTRY TRUSTED

ENERGY-SAVING WORKHORSE

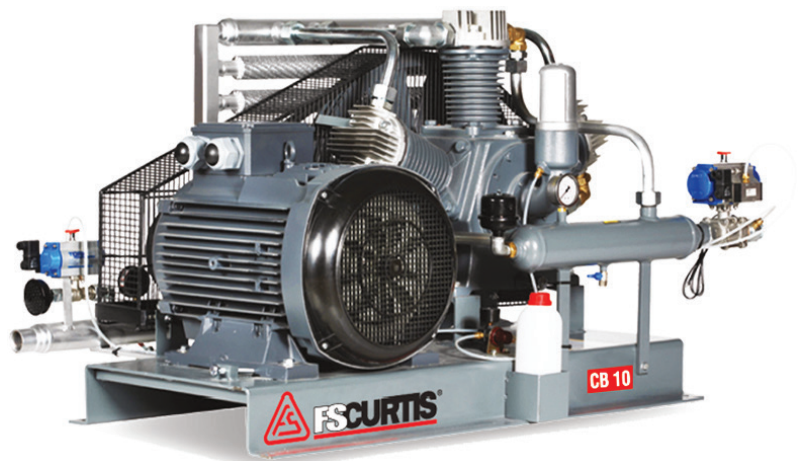


Ultimate solution for High-Pressure Air Boosting

FS-Curtis booster technology has consistently demonstrated its reliability over the years, whether it's used for blowing PET bottles, Laser cutting, pipeline testing or compressing nitrogen—any application that demands high final pressures.

The exceptional flexibility of the CB series high-pressure booster is what sets it apart. Regardless of the maximum compression ratio, it can achieve any final pressure between 15 and 40 bar, while the primary pressure can be adjusted between 5 and 12 bar.

The technological benefits of FS-Curtis' single-stage compressed booster are evident: along with its reduced energy consumption compared to multi-stage systems, it provides remarkable flexibility in choosing both primary and final pressures. These robust systems not only deliver excellent efficiency but also guarantee a long service life due to the use of premium components.



FEATURES AT A GLANCE

COMPRESSOR BLOCK

- Heavy duty cast-iron crankcase
- Precisely machined and honed cast-iron cylinders and bare pumps with cooling fins
- Dynamically balanced GGG60 cast crankshaft and counter weight
- High capacity and high pressure-resistant inlet-outlet valves made from stainless steel
- Compression and oil retaining rings

MAIN MOTOR AND DRIVE SYSTEM

- Drive system with belt pulley mechanism
- Specially designed fan type cast iron pulley
- Easy belt tensioning system
- Special loadless start system
- IE3 efficiency-class electric motors
- Star/delta motor starter

COOLING SYSTEM

- 2-stage aluminium radiator for Air and Oil cooling
- Bar-Plate outlet air cooling radiator

ADVANTAGES

- Durable sliding bearings prolong maintenance periods and keep maintenance costs low.
- High performance with the high engineering technology and design.
- Oil-trap air filtration system provides cleaner air.
- Energy-saving advanced cooling systems.

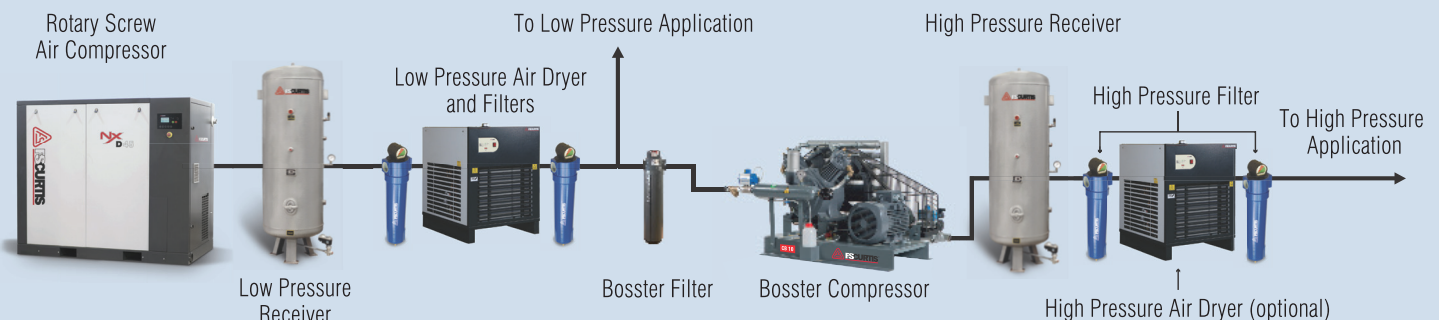
SAFETY SYSTEMS

- Intake air control system
- High pressure safety valve
- Manual drain valve
- Non-return valve
- Belt-pulley guard
- Outlet pressure gauge
- Air inlet and outlet hoses & connections
- Vibration pads

OTHER FEATURES

- Automatic discharge system for loadless start
- Low Speed operation
- Long-life bearings
- Air-cooled after cooler
- Air intake filter and silencer for loadless operation
- Oil splash lubrication system
- Oil level indicator
- Special discharge system preventing oil leakage from blow down valve.

Typical Booster System Installation Layout



TECHNICAL DATA

| AIR BOOSTER SPECIFICATIONS | | | | | | | |
|--|-----|------------------|------------------|------------------|------------------|------------------|------------------|
| BOOSTER MODEL | | CB-10 | CB-15 | CB-20 | CB-25 | CB-30 | CB-40 |
| Frequency and Voltage Ratings | Hz | 50 | 50 | 50 | 50 | 50 | 50 |
| | V | 400 | 400 | 400 | 400 | 400 | 400 |
| Maximum Working Pressure | bar | 40 | 40 | 40 | 40 | 40 | 40 |
| Free air delivery at 7 Bar Inlet Pressure | cfm | 63 | 74 | 111 | 147 | 167 | 200 |
| Free air delivery at 10 Bar Inlet Pressure | cfm | 87 | 101 | 153 | 202 | 230 | 276 |
| Free air delivery at 12 Bar Inlet Pressure | cfm | 102 | 119 | 180 | 237 | 270 | 324 |
| Number of Cylinders | # | 2 | 2 | 2 | 3 | 3 | 3 |
| Rated motor | kW | 7.5 | 11 | 15 | 18.5 | 22 | 30 |
| Minimum Working Pressure | bar | 15 | 15 | 15 | 15 | 15 | 15 |
| Drive System | | Belt / Pulley | | | | | |
| Compressed Air Outlet | R | 1" | 1" | 1" | 1 1/4" | 1 1/4" | 1 1/4" |
| Compressor Weight (approx.) | kg | 268 | 285 | 300 | 345 | 390 | 426 |
| Compressor Dimension (L x W x H) | mm | 1289 X 825 X 753 | 1286 X 825 X 753 | 1357 X 820 X 753 | 1423 X 874 X 736 | 1423 X 881 X 736 | 1423 X 972 X 736 |

| NITROGEN BOOSTER SPECIFICATIONS | | | | | | | |
|--|-----|------------------------------|------------------------------|------------------------------|------------------------------|------------------------------|------------------------------|
| BOOSTER MODEL | | CB-10 NITROGEN BOOSTER | CB-15 NITROGEN BOOSTER | CB-20 NITROGEN BOOSTER | CB-25 NITROGEN BOOSTER | CB-30 NITROGEN BOOSTER | CB-40 NITROGEN BOOSTER |
| Maximum Working Pressure | bar | 40 | 40 | 40 | 40 | 40 | 40 |
| Free Air Delivery at 7 Bar Inlet Pressure | cfm | 44 | 52 | 78 | 103 | 117 | 140 |
| Free Air Delivery at 8 Bar Inlet Pressure | cfm | 50 | 59 | 88 | 116 | 132 | 158 |
| Free Air Delivery at 10 Bar Inlet Pressure | cfm | 61 | 71 | 107 | 141 | 161 | 193 |
| Free Air Delivery at 12 Bar Inlet Pressure | cfm | 71 | 84 | 126 | 166 | 189 | 164 |
| Minimum Working Pressure | bar | 15 | 15 | 15 | 15 | 15 | 15 |

EXPERT CARE, GENUINE PARTS, ANYTIME YOU NEED!

Our certified technicians are just a call away, ensuring your FS-Curtis compressor stays in peak condition with fast, reliable service and authentic spare parts you can trust.



CONTINUED COMMITMENT

A company history that dates back more than 170 years is a company history that, to us, is just the beginning. FS-Curtis is committed to offering a world-class portfolio of products. Through the dependability of our people and our quality-focused manufacturing, FS-Curtis will continue to be the most trusted and dependable name in compressed air serving even more markets through our ever-growing global presence.

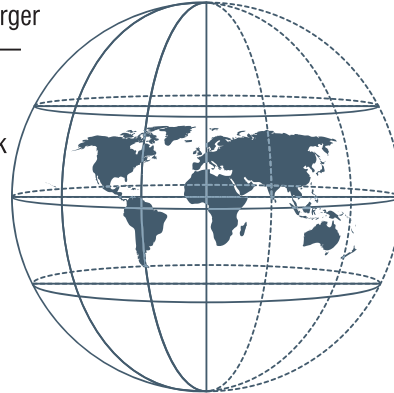


You can count on **FS-Curtis** to approach the next 170 years by staying true to the values and strengths that are appreciated by our customers today.

A WORLD OF DIFFERENCE

The FS-Curtis headquarters in St. Louis, Missouri, U.S.A. is the anchor of a larger global network. FS-Curtis builds quality products — and a quality reputation — at locations around the world.

In addition to our manufacturing and packaging locations, a large global network of sales agents and distributors ensures that sales and service support is available around the world, day in and day out.



ST. LOUIS, MO USA (HEADQUARTERS)

INDIA | GERMANY | TAIWAN | BRAZIL | VIETNAM | INDONESIA

Distributed By:



FS Compressors India Pvt. Ltd

Plot no-S-3, Chakan MIDC, Industrial area, Phase-II, Savardari, Khed, Pune - 410501

Tel: +91 74200 56998

e-mail: info@fscurtis.in

CORPLITERATURE: FSCIPL-CB SERIES-REV1
Improvements and research are continuous at FS-Curtis. Specifications may change without notice.

© 2024 FSCIPL