

---EXTERNAL CONFIDENTIAL---

RECD-4038

| SR.NO | PART NAME | MATERIAL | QUANTITY | SCOPE |
|-------|------------------|-----------------|----------|--------|
| 01 | DG | NA | 1 | CLIENT |
| 02 | INLET COUPLER | IS 2062 GRADE B | 1 | CHAKR |
| 03 | INLET PIPE | IS 2062 GRADE B | 1 | CHAKR |
| 04 | CHAKR SHIELD | SS202 | 1 | CHAKR |
| 05 | OUTLET COUPLER | IS 2062 GRADE B | 1 | CHAKR |
| 06 | OUTLET PIPE | IS 2062 GRADE B | 1 | CHAKR |
| 07 | STRUCTURE | IS 2062 GRADE B | 1 | CHAKR |
| 08 | PIPE SUPPORT | IS 2062 GRADE B | 1 | CHAKR |
| 09 | ELECTRICAL PANEL | TA PANEL | 1 | CHAKR |
| 10 | ELECTRICAL CABLE | NA | 15MTR | CHAKR |


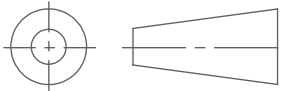
- NOTE:
- CIVIL FOUNDATION REQUIRED(CLIENT'S SCOPE)
 - EXISTING SHED & WIRE MESH TO BE REWORKED ACCORDING TO THE OUTLET PIPE
 - 6 INCH PIPE OF LENGTH 100MM & 6 INCH FLANGE TO BE WELDED TO DG OUTLET(SUPPLY IN LOOSE)
 - DOFF ORIENTATION HAS BEEN CHANGED FROM EXISTING SILENCER LOCATION

- NOTE:
- DUE TO IP, DETAIL DRAWINGS OF INSIDE PARTS CAN NOT BE PROVIDED.
 - ALL RECONNECTING PIPES WILL BE PROVIDED PROPER SUPPORT AS ON SITE.
 - THE DECISION TO INSTALL THE ELECTRICAL PANEL IS TO BE TAKEN ON THE SITE.
 - INCOMING CABLE & INDUSTRIAL POWER BOARDS WILL BE WITHIN THE CLIENT'S SCOPE.
- RECOMMENDED SPECIFICATION ARE AS BELOW :
- ONE 15A INDUSTRIAL POWER BOARD WITH MCB NEAR TO THE CHAKR SHIELD PANEL LOCATION WHICH WILL RECEIVE POWER SUPPLY FROM GRID/UPS.
 - ONE 15A INDUSTRIAL POWER BOARD WITH MCB NEAR TO THE CHAKR SHIELD PANEL LOCATION WHICH WILL RECEIVE POWER SUPPLY FROM DG.
 - RECOMMENDED CABLE SIZE-1.5SQ.MM THREE CORE FLEXIBLE/ARMoured CABLE.

DETAIL A
SCALE 1 : 40

| COLOR CODING FOR GA | |
|---------------------------|--|
| LASER CUT INLET PIPE | |
| NEW STANDARD PIPE | |
| IN/OUT COUPLER | |
| EXISTING OUTLET PIPE USED | |
| BELLOW | |

FOR EXTERNAL REFERENCE ONLY

| | | | |
|---|----------------------------|--|--|
| Tolerance, If Not Specified: X : +/- 2 X.X : +/- 0.5 | SCALE : NTS FORMAT : A3 | |  Chakr Innovation Pvt. Ltd. |
| | DRN. BY | SBDC 24-10-2024 | |
| ALL DIMENSIONS ARE IN mm UNLESS OTHERWISE SPECIFIED | CH'D BY | | DESCRIPTION : GENERAL ARRANGEMENT DRAWING OF RECD, 400KVA |
| | APPD. BY | | |
|  | | SITE NAME : 4038-BARRIOO EQUIPMENTS-400KVA | |
| | | DWG NO. : GA-4038 | RECD SR.NO. 4038 |
| | | REVISION 0 | |
| SHEET 1 OF 5 | | | |

F



C

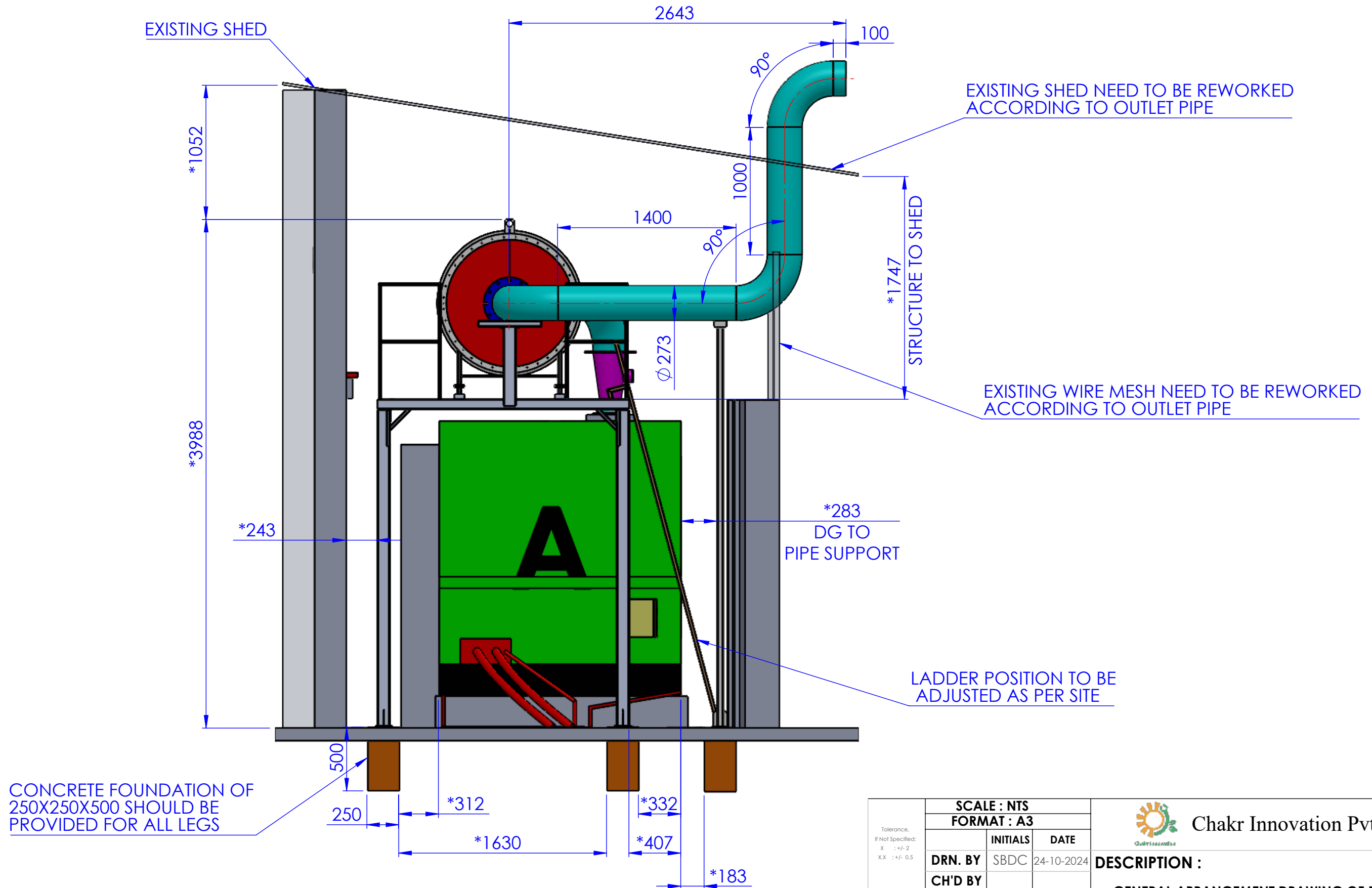
B

A

A


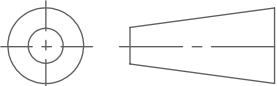
A

---EXTERNAL CONFIDENTIAL---



NOTE:--
* MARK SHOWS THAT DIMENSION CAN CHANGE AS PER SITE

FOR EXTERNAL REFERENCE ONLY

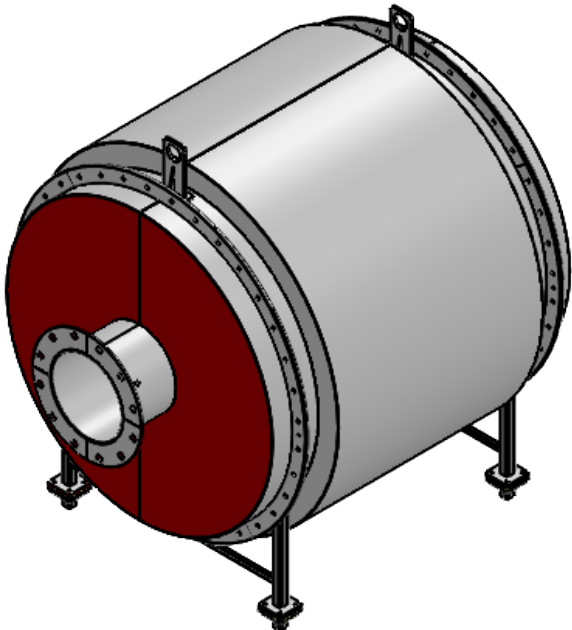
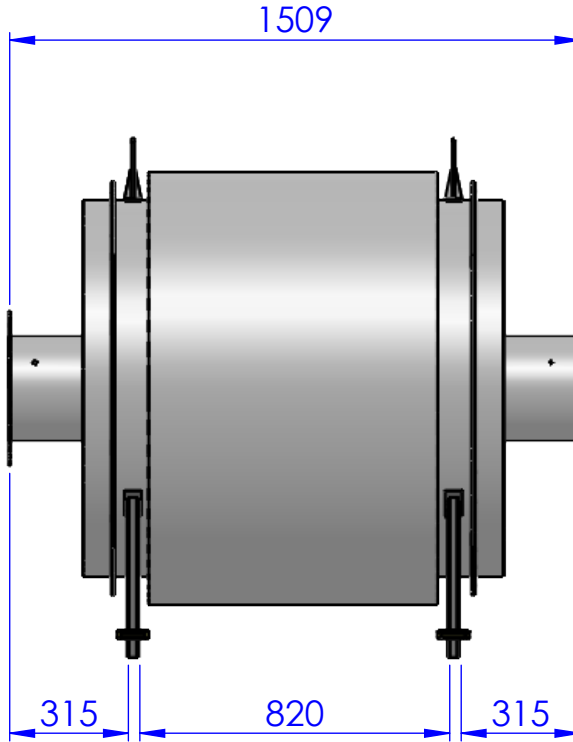
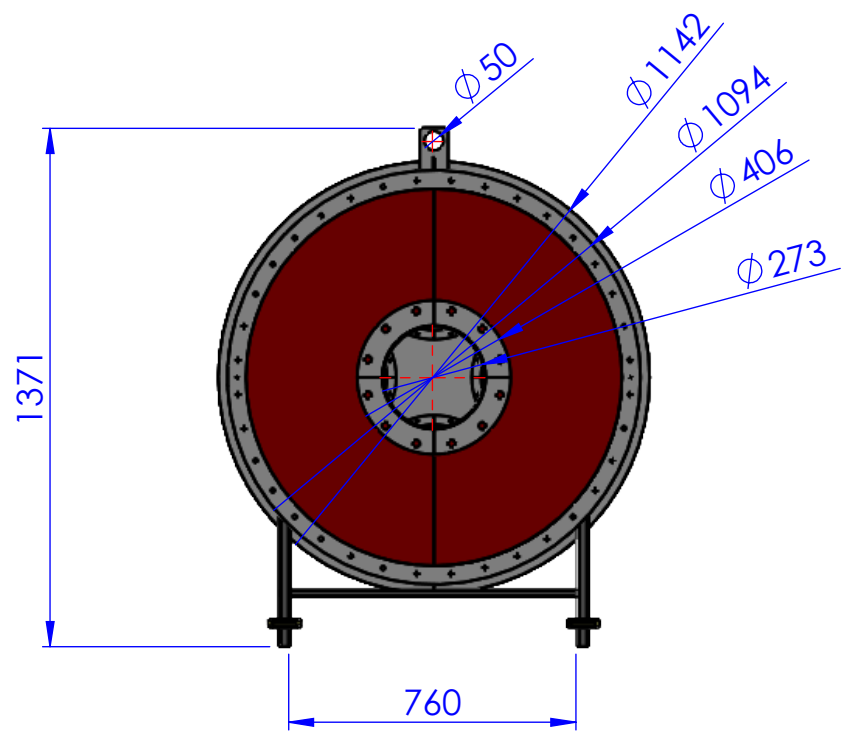
| | | | | |
|--|--|-------------|---|------------|
| <div>Tolerance, If Not Specified: X : +/- 2 X.X : +/- 0.5</div> | SCALE : NTS | | <div> Chakr Innovation Pvt. Ltd.</div> | |
| | FORMAT : A3 | | | |
| | | INITIALS | | DATE |
| | DRN. BY | SBDC | | 24-10-2024 |
| <div>ALL DIMENSIONS ARE IN 'mm' UNLESS OTHERWISE SPECIFIED</div> | CH'D BY | | <div>DESCRIPTION : GENERAL ARRANGEMENT DRAWING OF RECD, 400KVA</div> | |
| | APPD. BY | | | |
| | <div></div> | | | |
| | | | | |
| SITE NAME : 4038-BARRIOO EQUIPMENTS-400KVA | | | | |
| DWG NO. : | | RECD SR.NO. | REVISION | |
| GA-4038 | | 4038 | 0 | |
| SHEET 3 OF 5 | | | | |

8 | 7 | 6 | 5 | 4 | 3 | 2 | 1


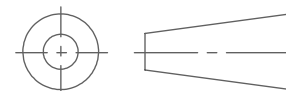


FOR EXTERNAL REFERENCE ONLY

---EXTERNAL CONFIDENTIAL---



FOR EXTERNAL REFERENCE ONLY

| | | | | |
|---|--|----------|--|--|
| <div>Tolerance, If Not Specified: X : +/- 2 X.X : +/- 0.5</div> | SCALE : NTS | | <div>Chakr Innovation Pvt. Ltd.</div> | |
| | FORMAT : A3 | | | |
| | | INITIALS | DATE | DESCRIPTION : GENERAL ARRANGEMENT DRAWING OF RECD, 400KVA |
| | DRN. BY | SBDC | 24-10-2024 | |
| CH'D BY | | | | |
| APPD. BY | | | | |
| <div>ALL DIMENSIONS ARE IN mm UNLESS OTHERWISE SPECIFIED</div> <div></div> | SITE NAME : 4038-BARRIOO EQUIPMENTS-400KVA | | | |
| | DWG NO. : <div>GA-4038</div> | | RECD SR.NO. 4038 | REVISION 0 |
| SHEET 5 OF 5 | | | | |