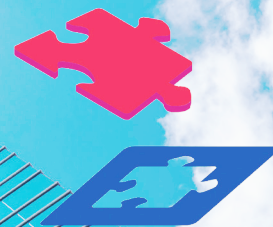


GS1 Consulting LLC

"Building Dreams, Managing Realities"



U.S. Small Business Administration



CAPABILITY STATEMENT

At **GS1 Consulting LLC**, we stand as a beacon of excellence in the realm of managed services for staffing solutions. With a proven track record of success, we specialize in providing top-tier staffing services while fostering diversity and inclusion. As a certified Minority Business Enterprise (MBE), Women's Business Enterprise (WBE), Disadvantaged Business Enterprise (DBE), and Airport Concession Disadvantaged Business Enterprise (ACDBE), we are dedicated to creating opportunities for all and delivering exceptional value to our clients.

CORE COMPETENCIES

- ✓ STRATEGIC RESOURCE ALLOCATION
- ✓ TALENT ACQUISITION AND STAFFING
- ✓ DEDICATED PROJECT MANAGEMENT
- ✓ VENDOR AND PARTNER COORDINATION
- ✓ COMMUNICATION AND STAKEHOLDER ENGAGEMENT
- ✓ PROJECT SCOPE AND BUDGET MANAGEMENT
- ✓ RISK MANAGEMENT AND MITIGATION
- ✓ SCALABILITY AND FLEXIBILITY
- ✓ CONTINUOUS IMPROVEMENT
- ✓ CHANGE MANAGEMENT

COMPANY DATA CERTIFICATIONS:

- INDOT DBE/ ACDBE
- City of Indianapolis Certified MBE/ WBE
- State of Indiana Certified MBE/ WBE
- SBA Certified WOSB

NAICS: 518210, 541511,
541611, 541614,
541910, 561110

DUNS: 081188892
CAGE: 83NZ3

gs1consulting.com

Located in South Bend, Indiana.

PAST PERFORMANCES

- STATE OF VIRGINIA | SUB-CONTRACTOR
Scope of work included: IT Managed Service Provider in the areas of IT Project Consulting, IT Staff Augmentation and Administrative/ Clerical Staff Augmentation.
- INDIANAPOLIS AIRPORT AUTHORITY | PRIME CONTRACTOR
Scope of work included: Supplier Diversity: DMWVBE Monitoring, Marketing, Compliance and Outreach.
- YWCA NORTH CENTRAL | CONSULTANT
Scope of work included: Event Planning, Project Initiation Meetings, Data Processing & Hosting, Customer Relationship Management, Process Documentation, Reporting and more.
- STATE OF INDIANA | SUB-CONTRACTOR
Scope of work included: IT Managed Service Provider in the areas of IT Project Consulting, IT Staff Augmentation and Administrative/Clerical Staff Augmentation.
- SMARTSHEET | SUB-CONTRACTOR
Scope of work included: Project Implementation Support, Document Management, Online Form Development and Project Management Office Set-Up.

DIFFERENTIATORS

- Strategic partnerships and client-centric collaboration
- Expertise in project management
- Unique capacity to bring a wide range of perspectives and experiences to every project

CONTACT INFO

GS1 CONSULTING, LLC

Takesha McClane-Tsamis, PMP
Chief Executive Officer

574.621.2777

info@gs1consulting.com