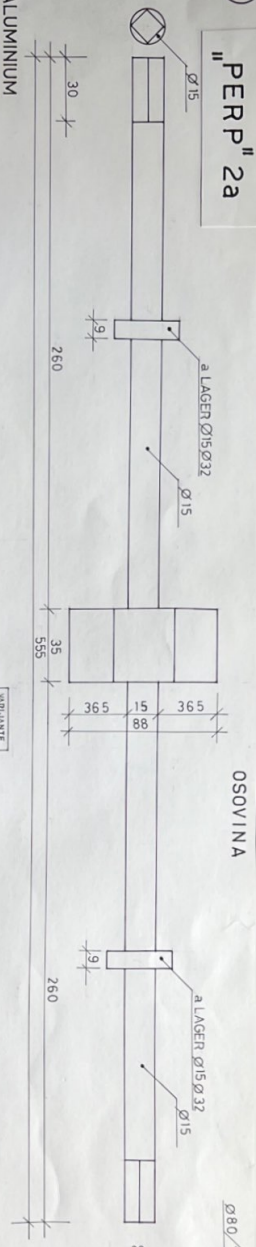
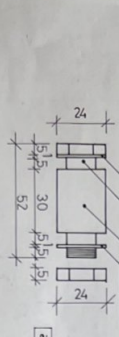


3 "PERP" 2a

- A ALUMINIUM
- F ČELIK
- G GUMA



OSOVININA



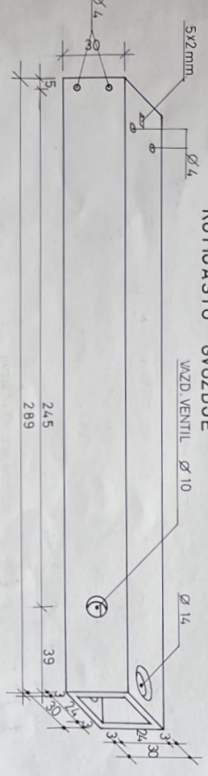
KUTUASTO

R-1/1
SPOJNI ŠARŽOV OSOVINSKI DISK
DILKA
METALNA ČAVNA

VARIJANTE
I II III
12 12 24 A F
8 8 16 A F

R-1/1
OSOVININA PERP. 2
a NOSIČI LAGERI OSOVINE

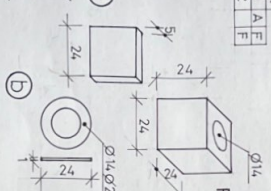
VARIJANTE
I II III
1 1 1 A F
2 2 2 A F



VZD. VENTIL

R-1/1
KUTUASTO OSOVIČE

VARIJANTE
I II III
2 4 8 A F



FIKS. GRANICNIK

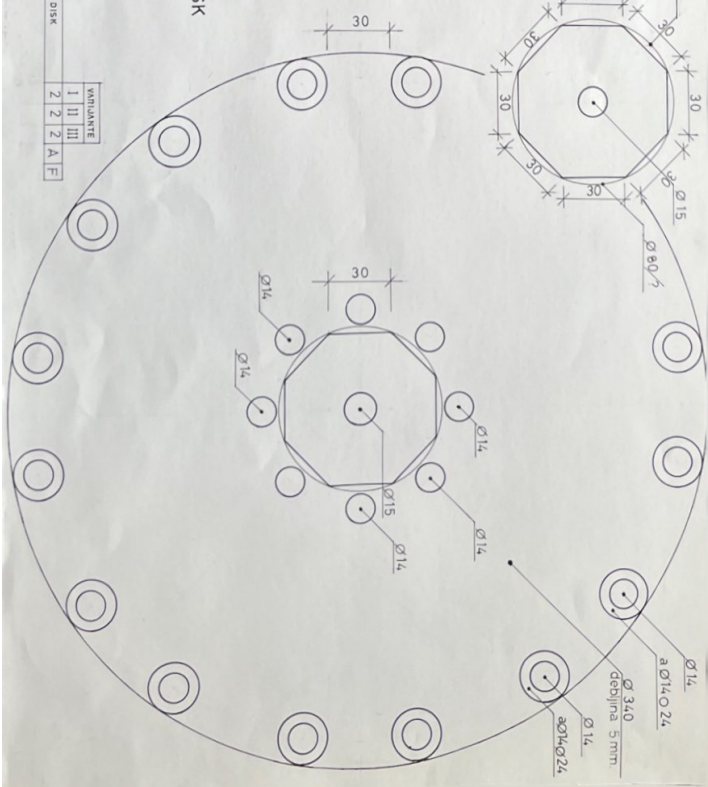
R-1/1
FRKSI GRANICNIK KUZELA
a ANOTIZER GUMA
b GRANICNIKA KUZELA
d ŠAVBNA GRANICNIKA

VARIJANTE
I II III
4 4 8 A F
4 4 8 G
16 16 16 A F

OSOVINSKI DISK

R-1/1
OSOVINSKI DISK

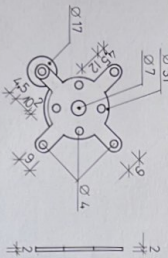
VARIJANTE
I II III
2 2 2 A F



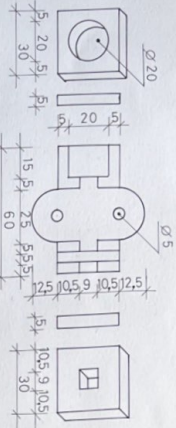
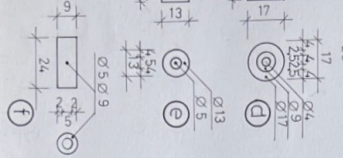
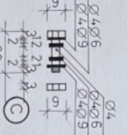
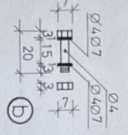
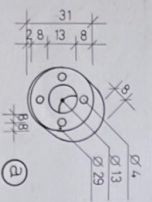
5 "PERP" 2a

- A ALUMINIUM
- F ČELIK
- G GUMA

VODUJICA ZAMAUČA

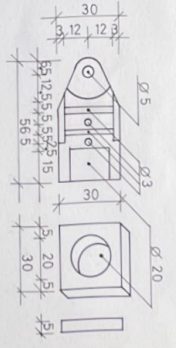
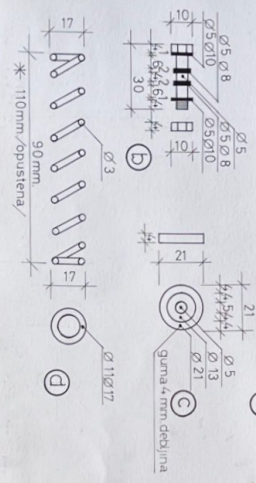


R-1/1		VARIJANTE		
	I	II	III	
a	8	16	32	F
b	4	8	16	F
c	16	32	64	F
d	16	32	64	F
e	4	8	16	F
f	4	8	16	F



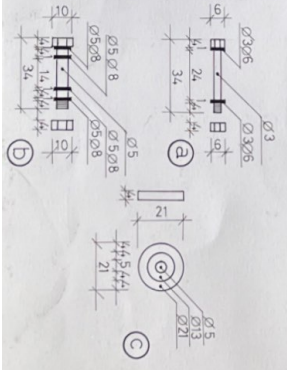
TELO KLIZAČA AMORTIZERA ZAMAUČA

R-1/1		VARIJANTE		
	I	II	III	
a	2	4	8	F
b	2	4	8	F
c	4	8	16	F
d	2	4	8	F

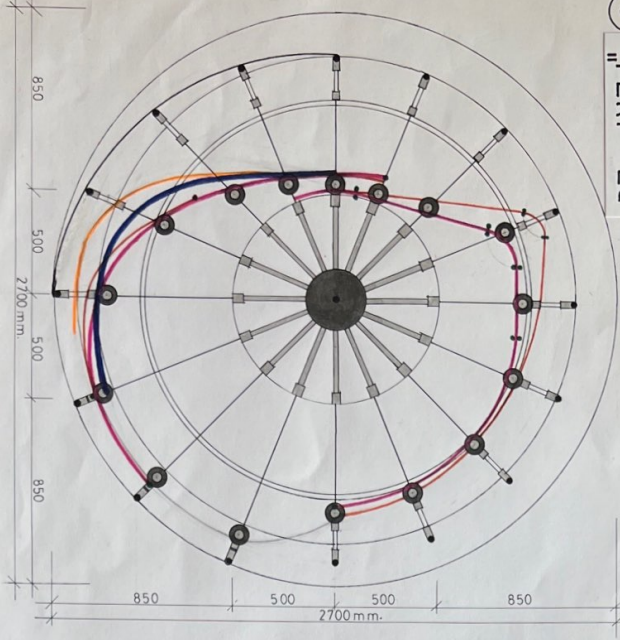


TELO FIKNOG DELA AM. ZAMAUČA

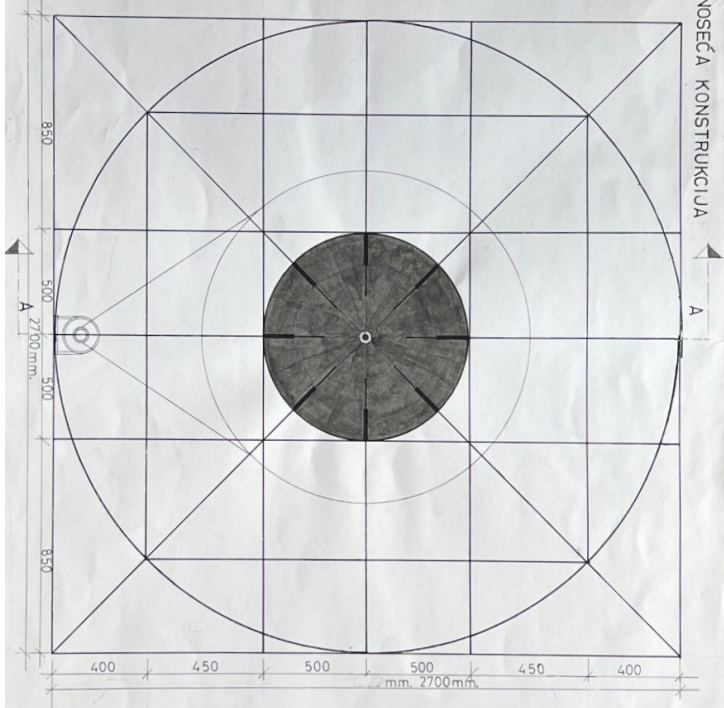
R-1/1		VARIJANTE		
	I	II	III	
a	2	4	8	F
b	8	16	32	F
c	2	4	8	F
d	4	8	16	F



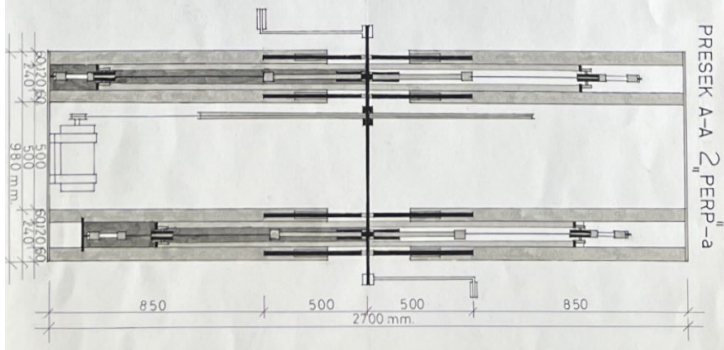
6 ROTACIJA KRAKOVA "PERP"-a
"PERP" 2a



NOSEČA KONSTRUKCIJA

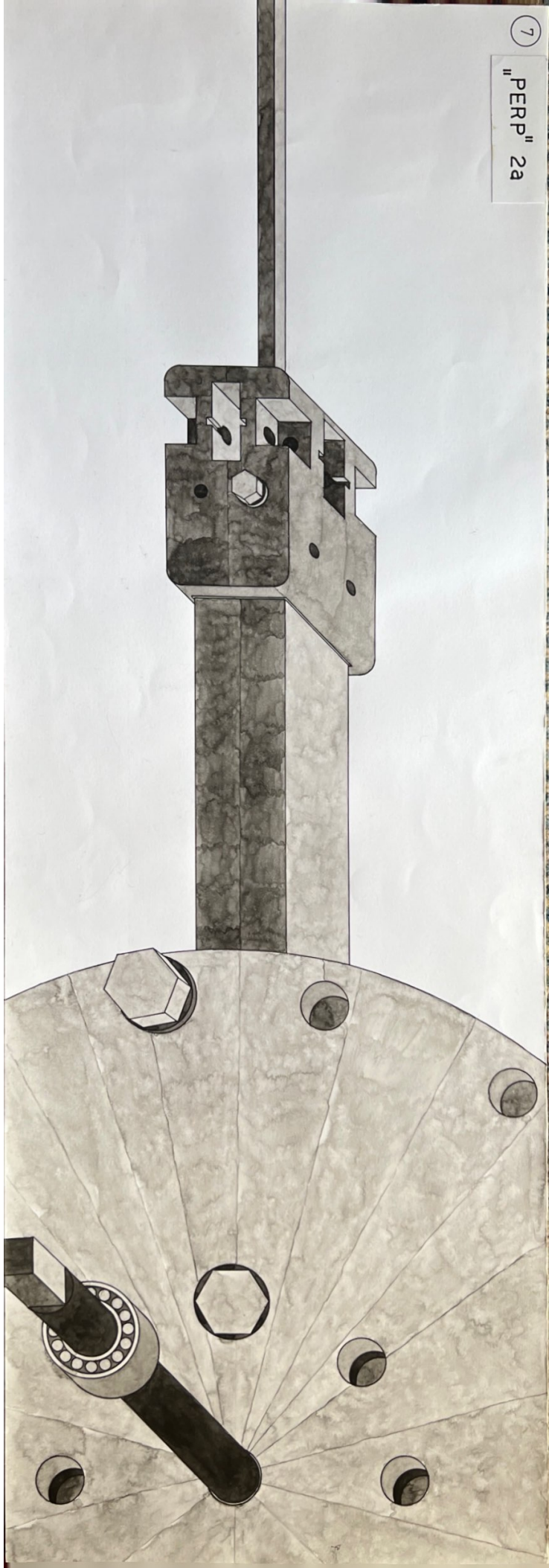


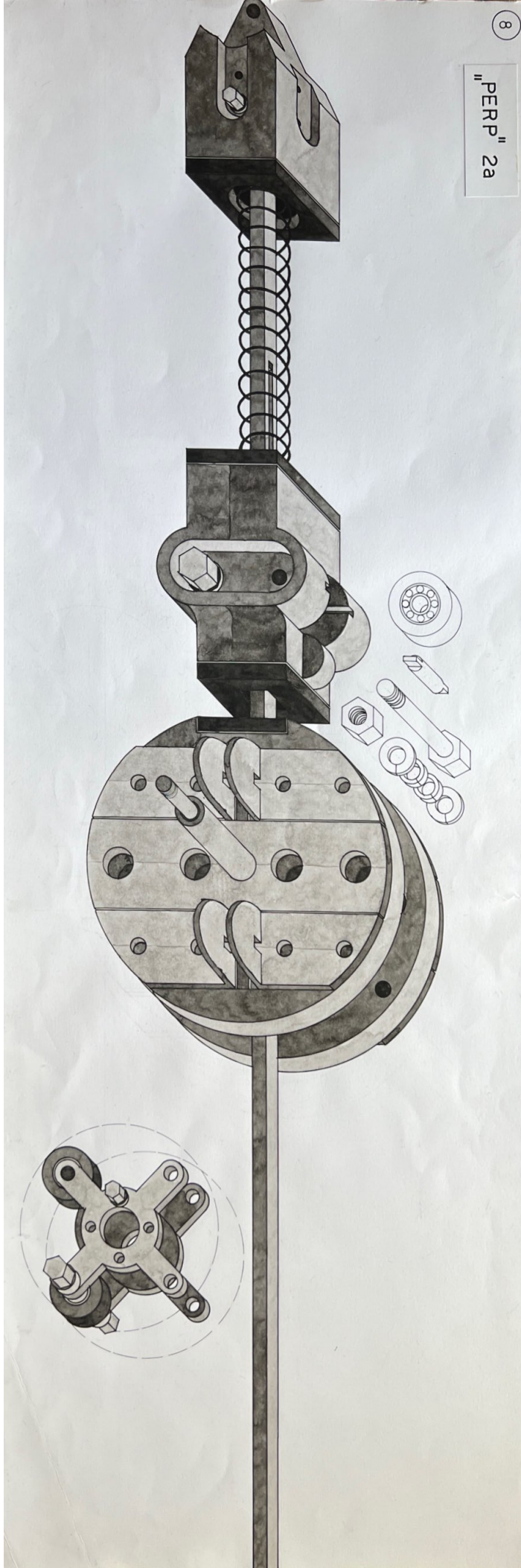
PRESEK A-A "PERP"-a



7

"PERP" 2a





"PERP" 2a

