



# NATIONAL PANHELLENIC COUNCIL

Panhellenic is a Greek word meaning

“All-Greek”

The National Panhellenic Conference (NPC) is the premier advocacy and support organization for the advancement of the sorority experience with 26 member organizations.

# WHO IS NWHCAP?

Northwest Harris County Alumnae Panhellenic Association (NWHCAP) is community based and affiliated with the National Panhellenic Conference (NPC).

Our goals are to:

- ❖ Inform alumnae of current trends in the Greek world,
- ❖ Promote the fraternity system by educating university-bound women and their parents,
- ❖ Forward information about local university-bound women to respective university chapters,
- ❖ Improve the Panhellenic image and foster inter-fraternity relationships,
- ❖ Provide scholarships for deserving collegiate sorority women living in Aldine, Cypress-Fairbanks, Klein, Spring and Tomball school districts.

# TYPES OF SORORITIES

- ❖ National Panhellenic Council (NPC)
- ❖ National Pan-Hellenic Council (NPHC)
- ❖ National Association of Latino Fraternal Organizations (NALFO)
- ❖ National Asian Pacific Islander American Panhellenic Association (NAPA)
- ❖ National Multicultural Greek Council (NMGC)
- ❖ Local

# WHAT IS A SORORITY?

- ❖ A values-based organization.
- ❖ Offers lifelong sisterhood and value.
- ❖ Creates an ever-widening circle of service.
- ❖ Develops an individual's potential through leadership opportunities.
- ❖ Provides academic support system.
- ❖ Sometimes chartered as a women's "fraternity."

# WHY JOIN?

- ❖ Personal & leadership development
- ❖ Academic support and excellence
- ❖ Make a larger institution feel smaller
- ❖ Lifelong friendships
- ❖ Community service and philanthropy
- ❖ Networking opportunities

# RECRUITMENT VOCABULARY

**Recruitment:** The process used by sororities for the selection of new members. May be informally referred to as “Rush”.

**Potential New Member (PNM):** A woman who is eligible to participate in recruitment.

**Legacy:** A daughter, sister or granddaughter of an initiated member of a sorority. Being a *legacy does not guarantee a bid* to a particular sorority. Each organization has its own policy for invitations to legacies during recruitment.

**Quota:** The number of potential new members to which each chapter can offer bids during formal recruitment. This is determined with a formula involving the number of chapters and the number of women participating in bid matching.

# HOW DO YOU JOIN?

- ❖ **Recruitment:** Formal + Informal
- ❖ **Formal Recruitment** is a period of time, usually held once a year, when all NPC sororities on a campus are working together through a coordinated schedule to meet and recruit new members.
- ❖ **Continuous Open Bidding (COB):** An opportunity for chapters that do not reach quota during primary recruitment to bid to total and/or quota. The continuous open bidding process is less formal, and not all chapters will participate in COB.
- ❖ **Membership** in a sorority is voluntary and is the result of a mutual selection process.



# WHAT TO EXPECT DURING FORMAL RECRUITMENT

- ❖ REGISTRATION + PAYMENT WITH  
UNIVERSITY PANHELLENIC COUNCIL
- ❖ ORIENTATION  
ZOOM + IN-PERSON  
PARTY SYSTEM - THEME DAYS – BID DAY
- ❖ RECRUITMENT COUNSELORS  
SMALLER GROUPS  
QUESTIONS + SUPPORT
- ❖ MUTUAL SELECTION PROCESS

# WHAT IS MUTUAL SELECTION?

Used by National Panhellenic Council (NPC) Sororities

Both the potential members and the individual sororities are making choices:

- ❖ Potential members make decisions about which parties to attend.
- ❖ Sororities make decisions about whom they wish to invite to their parties.
- ❖ Potential members may not always get invited to the parties they would like to attend.

# RELEASES

- ❖ Typical considerations
  - ❖ Grades/GPA
  - ❖ Reputation
  - ❖ Quota
  
- ❖ If released from favorites, consider:
  - ❖ Staying in and seeing the process through.
  - ❖ Consider Continuous Informal Recruitment.
  - ❖ Go through Formal Recruitment following year.

# WHEN IS RECRUITMENT?

Every school has a different schedule

Fall Recruitment – can be anytime from the week before classes to mid semester.

Deferred Recruitment – usually early to mid January.

Some schools may have required events in the Fall semester.

# HOW MUCH DOES IT COST?

- ❖ Range \$500 - \$3000/semester
- ❖ Depends on campus and sorority
- ❖ Check your campus Greek Life/Panhellenic/Student Affairs website for more detailed information

# WHAT TO WEAR?

Every school Is different

Dress Modestly — dress for girls not boys

# RECOMMENDATIONS AND REFERRALS

- ❖ Some sororities use recommendations/referrals as an opportunity to introduce potential new members.
- ❖ Each sorority has their own policy on references and referrals.
- ❖ If you know women who are sorority alumnae, you may ask her to submit a recommendation/referral on your behalf.
- ❖ If you ask a sorority alumna to write a recommendation/referral for you, please ask her permission to include her name on your NWHCAP registration form.

NWHCAP  
REGISTRATION  
PROCESS  
&  
WHY



# REGISTRATION

- ❖ Register at website [www.nwhcap.org](http://www.nwhcap.org)
  - ❖ Complete the google registration form + 2 photos
  - ❖ By registering – you are eligible for our scholarships
- ❖ Other items on our website
  - ❖ NPC Recruitment Powerpoint
  - ❖ Recruitment Information Guide
  - ❖ College/University Contact Information
  - ❖ FAQs

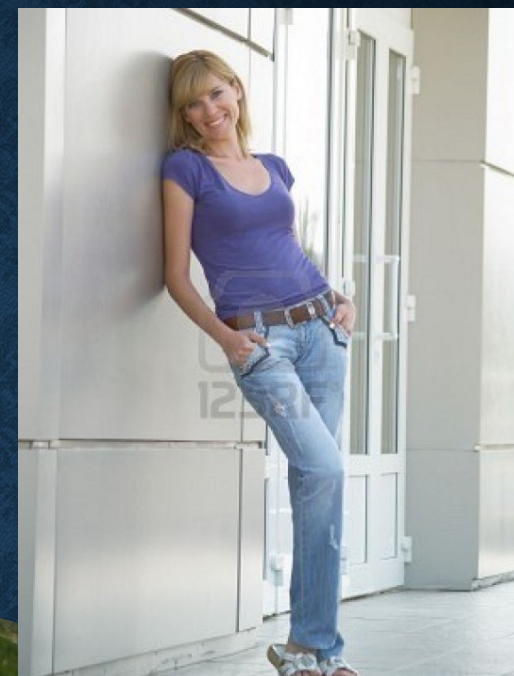
# REGISTRATION FORM

- ❖ The form includes the following sections: (Complete in 1 sitting)
  - ❖ Personal information
  - ❖ Scholastic information
  - ❖ Activities, clubs, offices, awards, honors for high school/university
  - ❖ Work experience
  - ❖ Volunteer/community service
  - ❖ Social media profiles
  - ❖ Special interests and hobbies
  - ❖ Family information
  - ❖ References: local and sorority

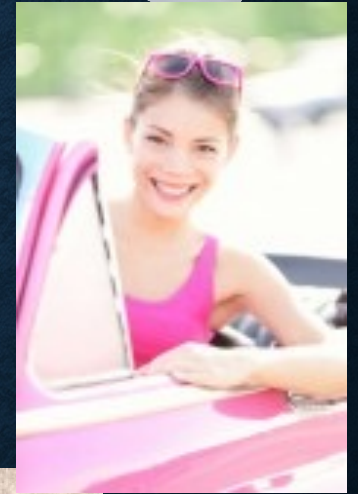
# PHOTOS

- ❖ 2 pictures – head shot and body shot
- ❖ Natural looking – what you are going to look like during recruitment
- ❖ Expensive professional pictures not necessary
- ❖ Only you in the photo – do not crop out other people
- ❖ Do not use prom, cheer, drill team, sports team nor pictures with any props

# PHOTO – DO'S



# PHOTO – DON'TS



# NEXT STEPS

- ❖ START NOW asking friends + family about sorority membership
- ❖ At [NWHCAP.org](http://NWHCAP.org): Complete the registration form & attach 2 photos
- ❖ Create your resume (with photos) to give to your sorority contacts.
- ❖ Attend Recruitment seminars offered during orientation.
- ❖ Do your own research about the sororities on your campus
  - ❖ University's Student Affairs and Panhellenic Council
  - ❖ Individual sorority websites
- ❖ Register for recruitment on your campus – this is REQUIRED
  - ❖ Registration may start over the summer – check online
  - ❖ Normally there are forms + fees

# NWHCAP REGISTRATION DEADLINE



May 1, 2023

# A LITTLE COURAGE AND CONVICTION

<https://youtu.be/xUO9MNtjG2w>



# SOCIAL MEDIA

- ❖ Watch what you post before & after Recruitment.
  - ❖ “OH, I just love Susie from ABC, I’m going to be an ABC, I just know it”
  - ❖ “My sister is in ABC so I will be an ABC too”
- ❖ Be careful how you act when you visit your university.
  - ❖ Keep an open mind, meet everyone, not all chapters are the same
  - ❖ Boys talk just as much as girls, be careful what you say & how you say it
- ❖ Be careful of the pictures you post on all Social Media sites.
- ❖ Same as applying for a job or college applications!

# RECRUITMENT REMINDERS

- ❖ Grades matter.
- ❖ Prepare to TALK – prepare questions to ask.
  - ❖ Avoid rumors and gossip.
  - ❖ Watch “how” you say it – attitude is VERY important!
- ❖ Keep an open mind.
- ❖ Be yourself.
  - ❖ Be polite.
  - ❖ Be on time.
- ❖ Watch your social media presence.
- ❖ Bids are not offered via social media.
- ❖ Smile and Have Fun!