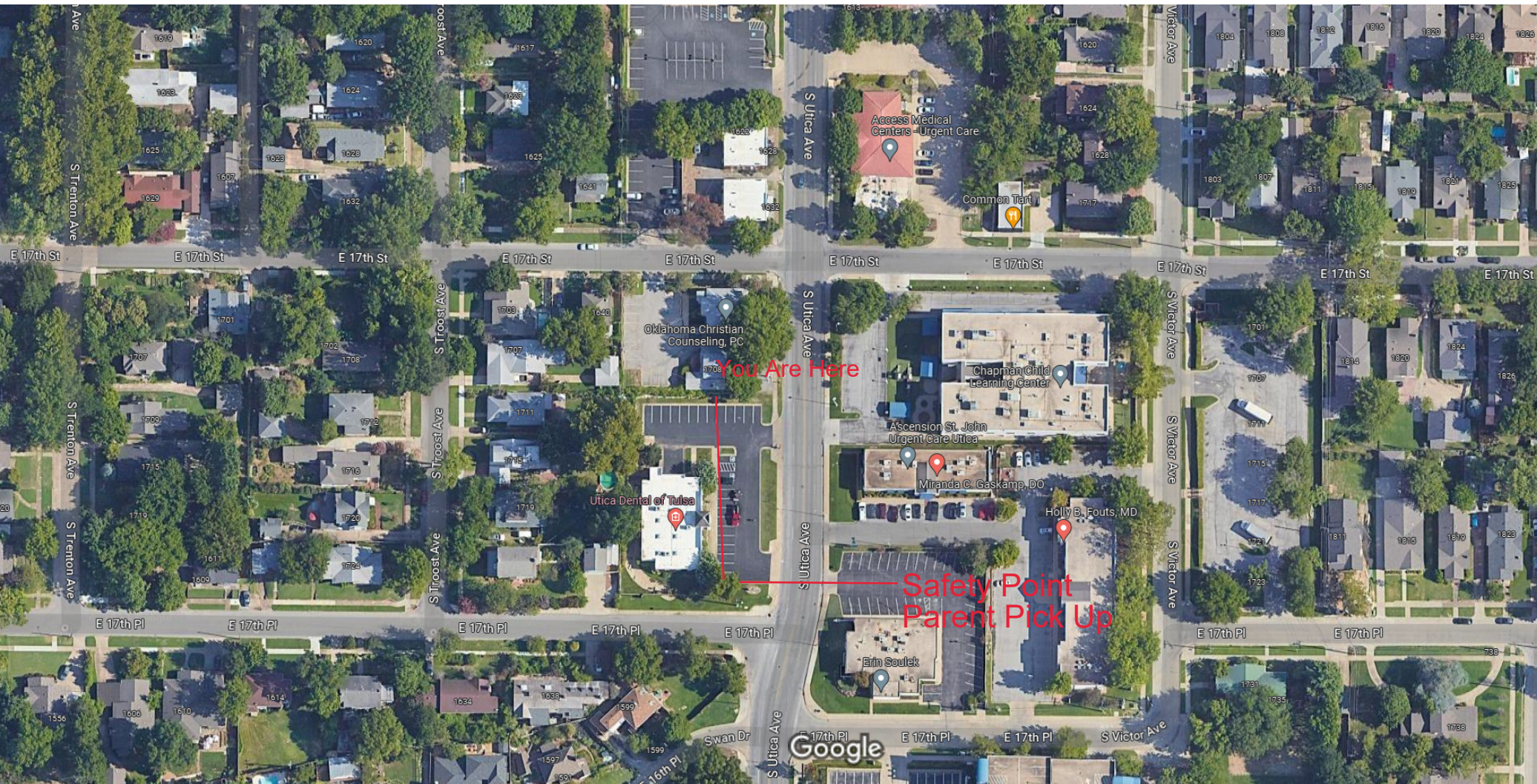


In the event of evacuation or temporary relocation our safety point is located at 1727 S. Utica Ave.



Imagery ©2023 Airbus, CNES / Airbus, Maxar Technologies, Map data ©2023 50 ft

Shelter in place procedures are practiced for tornadoes, severe storms, active shooter, chemical or biological threats unless otherwise instructed by law enforcement.