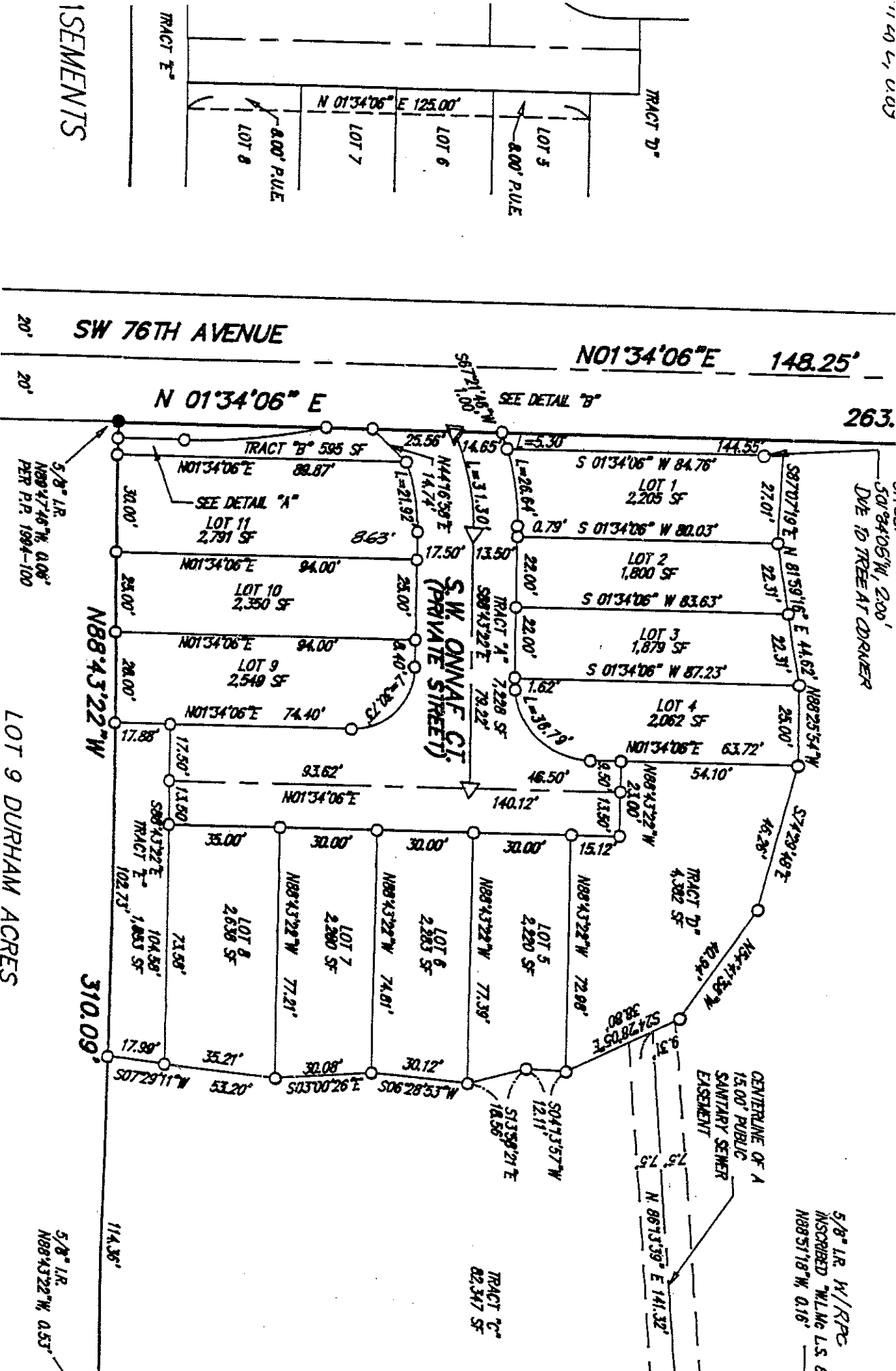


PRIVATE STREET
ONNAVA ST.



EASEMENTS



50' 84' 06" W, 2' 00"
DUE TO TREE AT CORNER

5/8" LR. W/RPC
INSCRIBED "M.L.G. L.S. &
N89°51'18" W, 0.16'

LOT 9 DURHAM ACRES

REGISTERED
PROFESSIONAL
LAND SURVEYOR

