



Collaborative Funding Guide

Multi-Year Collaboration for Healthy, Safe and Vibrant Communities

December 2021



A Letter from Our Management Team

Dear Community Investment Council:

Welcome to the Healthy Communities Delaware Collaborative Funding Guide. We are excited to invite you to participate in this collaborative funding pilot and will ask for your feedback to improve this process in future cycles.

In 2020, Healthy Communities Delaware began a multi-year collaboration with 9 communities, offering technical assistance and evaluation support, as well as funding. Our collective vision, one shared by our partners and many of you, is a state where all people and places are thriving. No exceptions. Supporting this work in a sustainable and impactful way is a 10- to 20-year proposition and it requires that we work together.

This Guide includes summaries of proposals that we received and reviewed. These projects will have an immediate impact on the vital conditions that all people and places need to thrive. They will also support long-term well-being and health outcomes. Over \$4.8 million of \$14.5 million has been secured to support these projects. Your investments are needed to bridge the funding gap of **\$9,736,167** by February 28, 2022. Collaborative funding provides us an opportunity to align our investments for an impact that is greater than what we could achieve alone. We urge you to fund one or more of these projects in part or in full.

Thank you for collaborating as a shared steward of well-being. Together, we can support healthy, safe, and vibrant communities where all people are thriving.

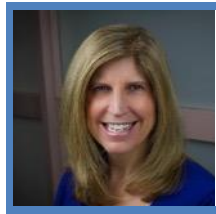
Warm regards,

The Healthy Communities Delaware Management Team



A handwritten signature in cursive script, reading "Rita M. Landgraf".

Rita Landgraf
Director, Partnership for Healthy
Communities
University of Delaware



A handwritten signature in cursive script, reading "K. Rattay".

Karyl Rattay
Director, Division of Public Health
Delaware Health & Social
Services



A handwritten signature in cursive script, reading "Stuart Comstock-Gay".

Stuart Comstock-Gay
President & CEO
Delaware Community
Foundation

INVEST IN YOUR COMMUNITY

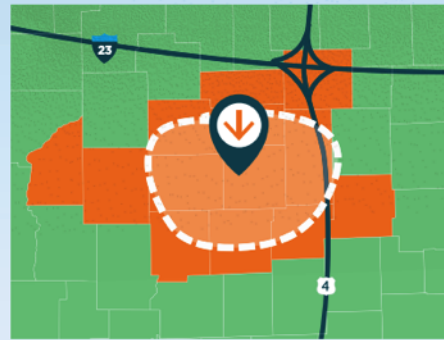
4 Considerations to Improve Health & Well-Being *for All*

WHAT Know What Affects Health



WHERE Focus on Areas of Greatest Need

Your zip code can be more important than your genetic code. Profound health disparities exist depending on where you live.



WHO Collaborate with Others to Maximize Efforts



HOW Use a Balanced Portfolio of Interventions for Greatest Impact

- Action in one area may produce positive outcomes in another.
- Start by using interventions that work across all four action areas.
- Over time, increase investment in socioeconomic factors for the greatest impact on health and well-being for all.

Four ACTION Areas



→ VISIT www.cdc.gov/CHInav FOR TOOLS AND RESOURCES TO IMPROVE YOUR COMMUNITY'S HEALTH AND WELL-BEING



Investment Vehicle Options

Alignment of investments from multiple organizations will increase the likelihood of impactful work at the community level. Your contribution to the Healthy Communities Delaware Community Collaborations Fund at the Delaware Community Foundation (earmarked or not) would enable communities to receive funding from one source and submit reports to one source. This would lessen the administrative burden on organizations with limited resources and enable them to devote more time to the work. We encourage you to invest in this way, but if you would prefer to contract with or grant directly to a community, you may do so.

Current investment vehicle options:

- (1) Contribute to the Healthy Communities Delaware Community Collaborations Fund at the Delaware Community Foundation (DCF) WITHOUT earmarks to a specific community or project,
- (2) Contribute to a Pooled Fund WITH earmarks for a community or project, or
- (3) Contract with or grant directly to the applying organization.

Steps for Collaborative Funding of Community Initiatives

- (1) Please review the brief project summaries provided in this guide. We have presented them by geographic location as well as by focus area.
- (2) For more information, please email the project contacts listed on each project summary. If a project receives funding allocations above the total cost, we will return to the collaborative funders to discuss options.
- (3) Please communicate your funding choices by email to Kate Dupont Phillips: Kate@HealthyCommunitiesDE.org by **February 28, 2022**.

Thank you for your partnership and your consideration of these opportunities. We will share a progress report and final report with funders.

Summary of Investments by Geography and Focus Area

Organization	Amount Requested	Page #	B e l o n g i n g & C i v i c	N a t u r a l W o r l d	H e a l t h & S a f e t y	H o u s i n g	W o r k & W e a l t h	L i f e l o n g L e a r n i n g	S t a f f / O p e r a t i o n s	C a p i t a l
New Castle County										
Be Ready Community Development Corporation	\$5,000,000	p. 7								
Central Baptist CDC	\$3,915,335	p. 8								
Cornerstone West CDC	Coming Soon!	-	-	-	-	-	-	-	-	
Habitat for Humanity of New Castle County	Coming Soon!	-	-	-	-	-	-	-	-	
Jefferson Street Center, Inc.	Coming Soon!	-	-	-	-	-	-	-	-	
Latin American Community Center	\$445,832	p. 9								
New Castle Prevention Coalition	Coming Soon!	-	-	-	-	-	-	-	-	
Southbridge CDC	\$375,000	p. 12								
Kent County										
NCALL Research, Inc.	Coming Soon!	-	-	-	-	-	-	-	-	
Sussex County										
La Esperanza	Coming Soon!	-	-	-	-	-	-	-	-	
Southeast Rural Community Assistance Project (SERCAP)	Coming Soon!	-	-	-	-	-	-	-	-	
Total Expenses	\$14,563,672									
Healthy Communities Delaware Co-Funding Committed	\$218,117									
Other Co-Funding Committed	\$4,609,387									
Investment Needed	\$9,736,167									

Table of Contents:

Be Ready Community Development Corporation	7
Central Baptist Community Development Corporation	8
Latin American Community Center	9
Southbridge Community Development Corporation	12



Be Ready Community Development Corporation

Community [Census Tracts]:	West Side, Wilmington [22, 23, 24]
Project Name:	Shovel-Ready Solomon's Court Phase II
Project Focus Area:	Humane Housing, Meaningful Work and Wealth
Investment Needed:	\$5 million [Capital]
Total Expenses:	\$7.3 million
Co-Funding [Co-Funder]:	\$2.3 million [expected]
To Invest or Learn More:	Margaret Moon Taylor, Executive Director, Be Ready CDC, KingdomConsultants12@yahoo.com Kate Dupont Phillips Kate@HealthyCommunitiesDE.org

Project Description: Be Ready Community Development Corporation (CDC) is assembling \$7.3 million to complete Solomon's Court Phase II, which will create 12 affordable rental units accessible for people with disabilities and 4,000 sq. ft. of commercial space at 1500 to 1508 W. 4th St. In 2021, HCD invested \$100,000 to support pre-development activities. This project is ready to break ground in March 2022. Site control, demolition, and design planning are complete, and zoning and the brownfield remediation plan are approved. The expected completion date is December 2023. Net operating income is projected to support \$2.3 million in loans, including deferred financing. Be Ready CDC has launched a capital campaign to raise the balance of the equity needed to complete the project and is seeking \$5 million in contributions from foundations and other philanthropic sources.

The project will complement Solomon's Court Phase I, a new three-story building that Be Ready CDC is developing 1510 to 1514 W. 4th St. with 1600 sq. ft. commercial space for small businesses and 6 new affordable rental housing units. The development team includes Breckstone as architect and Disabatino Construction as general contractor.

Community Need and Impact: Solomon's Court addresses the needs for housing and economic development identified in the resident-driven West Side Revitalization Plan, which was developed with the input of over 650 residents in 2012.

Solomon's Court will transform an entire block, formerly occupied by vacant and deteriorating buildings, into an anchor development that reduces vacancy and blight, increases affordable rental housing options, promotes local economic development, creates jobs, and supports the development of a mixed-use commercial corridor.



Rendering of Solomon's Court.

Central Baptist Community Development Corporation

Community [Census Tracts]:	Eastside, Wilmington [9, 29]
Project Name:	Anchoring Futures on the Eastside
Project Focus Area:	Belonging and Civic Muscle, Meaningful Work and Wealth, Lifelong Learning, Housing
Investment Needed:	\$3,915,335 [Capital]
Total Expenses:	\$4,509,150
Co-Funding Committed [Co-Funder]:	\$546,950 State of Delaware Bond Bill \$45,000 [Healthy Communities Delaware, 2021] \$1,865 [Other Contributions]
To Invest or Learn More:	Terrence Keeling, CEO/President, revtsk.TK@gmail.com Kate Dupont Phillips Kate@HealthyCommunitiesDE.org
<p>Project Description: Central Baptist Community Development Corporation (CBCDC) will renovate a former house of worship at 10th & Lombard in the Eastside of Wilmington to offer affordable housing, youth programs, career development and employment services, and community gathering space. The building has been an important community anchor since 1896. But as resources diminished, the building and the stronghold it provided for youth and families have deteriorated over recent years. Seeing an opportunity for community revitalization, CBCDC mobilized and secured ownership. New funding will allow this 12,000 square-foot space to be transformed into a much-needed Eastside community anchor. The first floor will house CBCDC's Eastside Career Development Center, Eastside Employment Services, and youth programming in partnership with the Culture Restoration Project. The second and third floors will become affordable and beautiful modern apartments.</p> <p>Community Need and Impact: Residents of Wilmington's Eastside are concerned about the lack of safe spaces, services, and opportunities for their children to grow and thrive. Renovating this historic building will provide a safe space for community gathering, youth programs, and career training and services. It was also address the critical need for affordable housing.</p>	



Proposed Alterations and Renovations to Epworth Methodist Church Building

Latin American Community Center

Community [Census Tracts]:	Wilmington and New Castle County
Project Name:	ConeXiones for a Healthier West Side
Project Focus Area:	Basic Needs for Health and Safety
Investment Needed:	\$80,000 [Staff/Operations]
Total Expenses:	\$365,612
Co-Funding Committed [Co-Funder]:	\$73,117 [Healthy Communities Delaware, 2021] \$147,495 [CDC Foundation – Federal & Local] \$65,000 [Trinity Health]
To Invest or Learn More:	Laura Adarve, LACC, Director of Prevention & Advocacy, LAdarve@TheLatinCenter.org Kate Dupont Phillips Kate@HealthyCommunitiesDE.org

Project Description: The Latin American Community Center (LACC) launched the ConeXiones program in September 2020 to address the impact of the COVID-19 pandemic on Latinos in Delaware. The demand for the ConeXiones program increased dramatically after the release of the COVID-19 vaccine in early 2021 and launch of LACC vaccine clinics. To meet this need, the LACC secured funding to hire an additional full time Community Engagement Coordinator, an additional part-time Community Engagement Coordinator, and a part-time Administrative Assistant. Community engagement coordinators connect individuals with COVID-19 vaccinations, testing, and treatment; deliver culturally tailored messaging to increase awareness of and trust in services and the vaccine; and support advocacy efforts so that Latino family needs are represented at the community and regional levels. The part-time program administrator strengthens LACC's health service infrastructure and ability to manage logistics for expanded vaccine and testing clinics and other community health events.

Most of the funding for the expansion of the ConeXiones program came from a one-year CDC initiative, which ended in April 2021. Additional funding is critical to maintain ConeXiones at its current level and meet the community's ongoing demand for vaccines and other COVID-19 related services. Funding will also ensure an adequate supply of masks and sanitation products so that ConeXiones can continue to safely deliver services.

Community Need and Impact: Program staff are doing critical work to combat vaccine hesitancy and increase vaccination rates and it is essential that the program continues at the current service level to ensure Latinos are adequately protected against the spread of COVID-19. The pandemic is disproportionately impacting the Latino population in New Castle County. Latinos are experiencing higher rates of COVID-19 and greater financial burdens compared to other groups. The economic impact of the pandemic is especially dire for undocumented individuals, who are ineligible for government assistance. Maintaining the capacity of ConeXiones will mitigate the impact of COVID-19 and protect the physical and economic health outcomes of the Latinos in New Castle County.



LACC clinic with staff

Latin American Community Center

Community [Census Tracts]:	Wilmington and New Castle County
Project Name:	Playing Up Children's Health in the West Side
Project Focus Area:	Basic Needs for Health & Safety, Lifelong Learning
Investment Needed:	\$313,101 [Capital]
Total Expenses:	\$434,806
Co-Funding Committed [Co-Funder]:	\$121,705 [Highmark BluePrints, Individual Contributions]
To Invest or Learn More:	Kelly Scanlan, LACC, Development Director, kscanlan@thelatincenter.org Kate Dupont Phillips Kate@HealthyCommunitiesDE.org
<p>Project Description: The Latin American Community Center (LACC) is building a playground in the heart of the Westside to provide children with a safe space for physical activity and enhance learning and development. The playground, at the corner of 4th and Harrison Streets, will serve 300 children ages 5-12 enrolled in the LACC's Before and After School Community Learning Center and Summer Day Camp. Currently, staff and children walk several blocks to a community park for outdoor play, risking student safety and limiting the amount of time children have outdoors. The playground was designed to be accessible for all ages and abilities and will promote child development and positive play.</p>	
<p>Community Need and Impact: Building a dynamic playground adjacent to the LACC building will provide children a safe place to play, grow, and learn for years to come.</p>	



LACC children enjoy being outdoors.

Latin American Community Center

Community [Census Tracts]:	Wilmington and New Castle County
Project Name:	Healthy Families Program
Project Focus Area:	Basic Needs for Health & Safety
Investment Needed:	\$52,731 [Staff/Operations]
Total Expenses:	\$57,578
Co-Funding Committed [Co-Funder]:	\$4,846 [Other Funders]
To Invest or Learn More:	Laura Adarve, LACC Director of Prevention & Advocacy, LAdarve@TheLatinCenter.org Kate Dupont Phillips Kate@HealthyCommunitiesDE.org
<p>Project Description: The Latin American Community Center (LACC) Healthy Families program utilizes community level and individual level strategies to connect uninsured and underinsured clients to healthcare and to address barriers to care. Community-level strategies include attending Community Health Fairs and outreach events, utilizing media platforms such as radio, newspaper, and social media, and attending community partnership meetings to represent Latino voices. Individual-level work includes completing client intake, health assessments, and follow-up visits referred to as "encounters." Encounters primarily focus on connecting uninsured/underinsured individuals to care. Many clients have limited English proficiency and/or may have concerns with seeking out services due to their immigration status. The LACC Health Programs Coordinator is bilingual and bicultural and can assist these individuals in navigating the health care system.</p> <p>Community Need and Impact: The Healthy Families Program will connect uninsured and underinsured Latinos with vital health care services, including but not limited to primary care, preventative health screenings and education, culturally competent health care navigation and coordination, and health-related financial management.</p>	



Southbridge Community Development Corporation

Community [Census Tracts]:	Southbridge, Wilmington [19.02]
Project Name:	Building Capacity to Implement Resident-Driven Southbridge Neighborhood Action Plan
Project Focus Area:	Belonging and Civic Muscle, Housing, Work and Wealth, Thriving Natural World, Lifelong Learning
Investment Needed:	\$25,000 [Staff/Operations]
Total Expenses:	\$125,000
Co-Funding Committed [Co-Funder]:	\$100,000 [Healthy Communities Delaware, 2021]
To Invest or Learn More:	Hanifa Shabazz, President, Southbridge CDC, info@hgnsconsulting.com Kate Dupont Phillips, Kate@HealthyCommunitiesDE.org
<p>Project Description: In collaboration with the Southbridge Civic Association, the South Wilmington Planning Network (SWPN), and Healthy Communities Delaware, residents of Southbridge recently completed a comprehensive community planning process and produced the 2021 Southbridge Neighborhood Action Plan. The workgroup identified the Southbridge Community Development Corporation (SBCDC) as the backbone organization to lead implementation of their community revitalization plan. Funding for a full-time project manager, a University of Delaware Biden School of Public Administration Intern, and other operational costs, will position SBCDC to achieve the following goals by 2023:</p> <ul style="list-style-type: none"> • Execute an agreement with the New Castle County Vo-Tech school district to increase workforce development opportunities for Southbridge residents. • Complete development of 5 new affordable homes and purchase 2-3 additional parcels of land for future affordable housing development. • Map land parcels available for acquisition and development to support affordable housing, business development, and community recreation. • Lead revitalization efforts of the Barbara Hicks Park (pending funds). • Raise funds to support the community revitalization and development efforts outlined in the Southbridge Neighborhood Action Plan. 	
<p>Community Need and Impact: Southbridge residents have a shared vision and plan for revitalizing their community. Building the capacity of SBCDC will provide the community with the backbone support needed to implement the Southbridge Neighborhood Action Plan, which will result in new opportunities for workforce development, affordable housing, and safe spaces for recreation and community gathering.</p>	



Resident advocating for Southbridge Community Benefits Agreement

Southbridge Community Development Corporation

Community [Census Tracts]:	Southbridge, Wilmington [19.02]
Project Name:	Revitalizing Barbara Hicks Park in Southbridge
Project Focus Area:	Thriving Natural World, Belonging and Civic Muscle
Investment Needed:	\$100,000 [Capital]
Total Expenses:	\$465,426
Co-Funding Committed [Co-Funder]:	\$365,426 [City of Wilmington]
To Invest or Learn More:	Hanifa Shabazz, President, Southbridge CDC, info@hgnsconsulting.com Kate Dupont Phillips Kate@HealthyCommunitiesDE.org

Project Description: In 2017, residents and the South Wilmington Planning Network devised a plan to revitalize the Barbara Hicks Park. The park serves the entire community – it is located near the community center, between two prominent churches, and close to several other neighborhoods. The Southbridge Community Development Corporation will lead implementation of the plan, which includes improvements to the tennis court, a new exercise track, updated equipment for all ages, and critical upgrades to the stormwater management system. One hundred thousand dollars is still needed for new exercise equipment and a community performance stage and seating.

Community Need and Impact: Covid-19 highlighted the disparities in access to parks, which help residents stay active and safely meet outdoors. Renovating the Barbara Hicks Park will beautify and update the park grounds and equipment and increase access to safe, green, and open space for physical activity and social gathering. Park renovation will also improve the community’s environmental health through enhanced flood mitigation and mosquito control.



Rendering of new exercise equipment (right) and community stage and seating (left) for the Barbara Hicks Park.

Southbridge Community Development Corporation

Community [Census Tracts]:	Southbridge, Wilmington [19.02]
Project Name:	Affordable & Resident-Driven Housing Development for Southbridge
Project Focus Area:	Humane Housing
Investment Needed:	\$250,000 [Capital]
Total Expenses:	\$1,306,100
Co-Funding Committed [Co-Funder]:	\$1,056,100 [New Castle County, Habitat for Humanity of New Castle County]
To Invest or Learn More:	Hanifa Shabazz, President, Southbridge CDC, info@hgnsconsulting.com Kevin Smith, Habitat for Humanity of New Castle County, CEO, klsmith@habitatncc.org Kate Dupont Phillips, Kate@HealthyCommunitiesDE.org
<p>Project Description: In collaboration with the residents of Southbridge and Habitat for Humanity of New Castle County, the Southbridge Community Development Corporation is compiling \$1.3 million to complete the development of SANKOFA Place, a shovel ready housing development that will create 5 new affordable houses at New Castle Avenue and B Street in Southbridge. This funding will also be used to purchase 2-3 parcels of land, where additional affordable homes will be developed for Southbridge residents.</p>	
<p>Community Need and Impact: Residents identified affordable, humane housing as a priority in the Southbridge Neighborhood Action Plan. Capital funds will create affordable homes for 5 Southbridge families, support acquisition of additional parcel for development, and support the community's larger revitalization and development goals.</p>	

Rendering of the Sankofa Place Housing Project

