

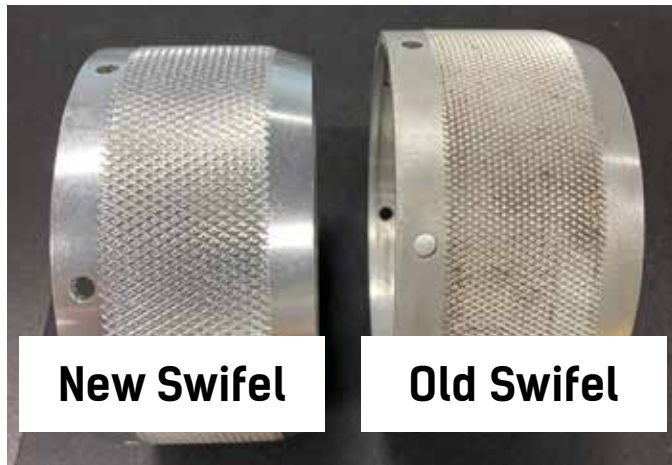


MCS60-1016 Chute Swifel Replacement

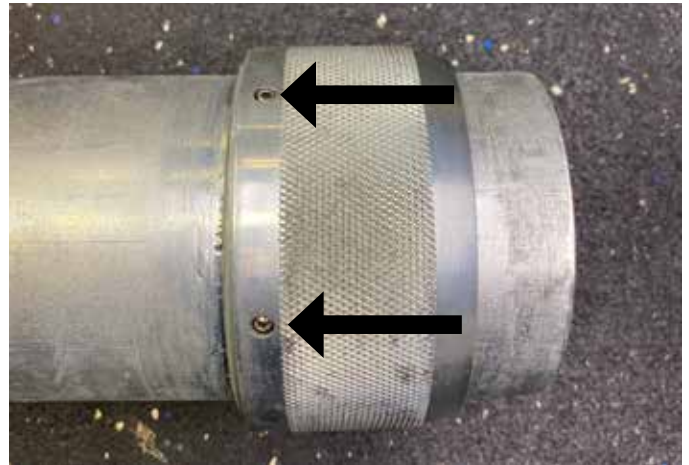
Removal and installation instructions for new style swifel

Tools Required:

- 2.5mm Allen wrench
- Cleaning Supplies



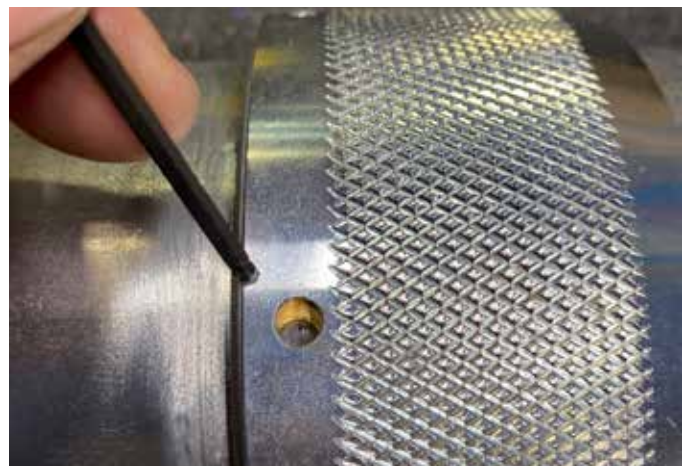
Note the difference in the diamond stamping.



1. Remove the (6) set screws from the brass collar beneath the swifel.



2. Remove the brass collars to clean the chute.



3. Replace brass collars and install new swifel. Use allen wrench to adjust alignment of the swifel and collars.



4. Install the (6) set screws. They will sit just below flush on the swivel.



The swivel will move freely on the chute. Adjust screw tension for proper movement.



Standing the chute upright can aid in swivel installation and tension adjustments.