

Kleiss Gastool® Stainless Steel Saddle Fitting Installation Instructions for 10" to 16" Fittings

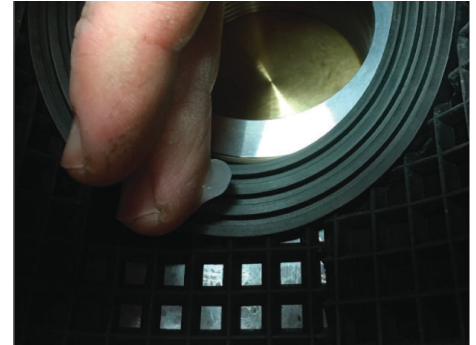
Notes: [1] max operating pressure is 60 psi, [2] max test pressure is 90 psi, [3] these fittings can be used on a variety of pipe materials (ie - cast iron, steel, and PVC) however always verify the pipe size (OD) is within the fitting range



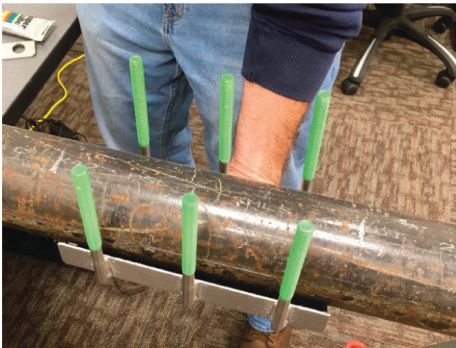
1. Mark the area where the fitting will be installed. Mark both sides and avoid any welded areas.



2. Clean (or descale cast iron) pipe of any dirt, debris, or foreign material. Be sure to clean all the way around the pipe and extend the cleaned area slightly outside the size of the fitting.



3. Apply a thin film of seal lubricant to the rubber ring gasket on the upper portion of the fitting. Do not over lubricate. (Use a lubricant such as Super Lube or similar synthetic grease.)



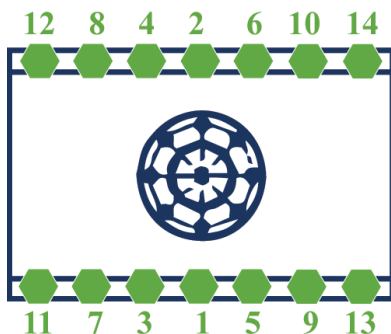
4. Install the lower and upper portions of the fitting onto the pipe. Position the upper half in direct contact with the pipe, the lower half will cradle the upper half. (See image 6.) Make sure the gasket is flat and not wrinkled or folded.



5. Install the spreader plates, washers, and nuts onto each bolt.



6. Make sure the lower portion of the fitting covers the upper gasket flaps. If there are issues with a tight fit or rolling the gaskets, use a small amount of lubricant on the rubber gasket to reduce friction.



7. Hand tighten all bolts evenly first.

8. Follow the torque pattern detailed in the picture. Torque bolts gradually in passes.

Pass 1 = 60 ft-lbs | Pass 4 = 90 ft-lbs
Pass 2 = 74 ft-lbs | Pass 5 = 90 ft-lbs
Pass 3 = 90 ft-lbs | Pass 6 = 90 ft-lbs

9. Pressure test and leak soap the saddle before tapping.

Distributed by: