


☐

I'm not robot


reCAPTCHA

Continue

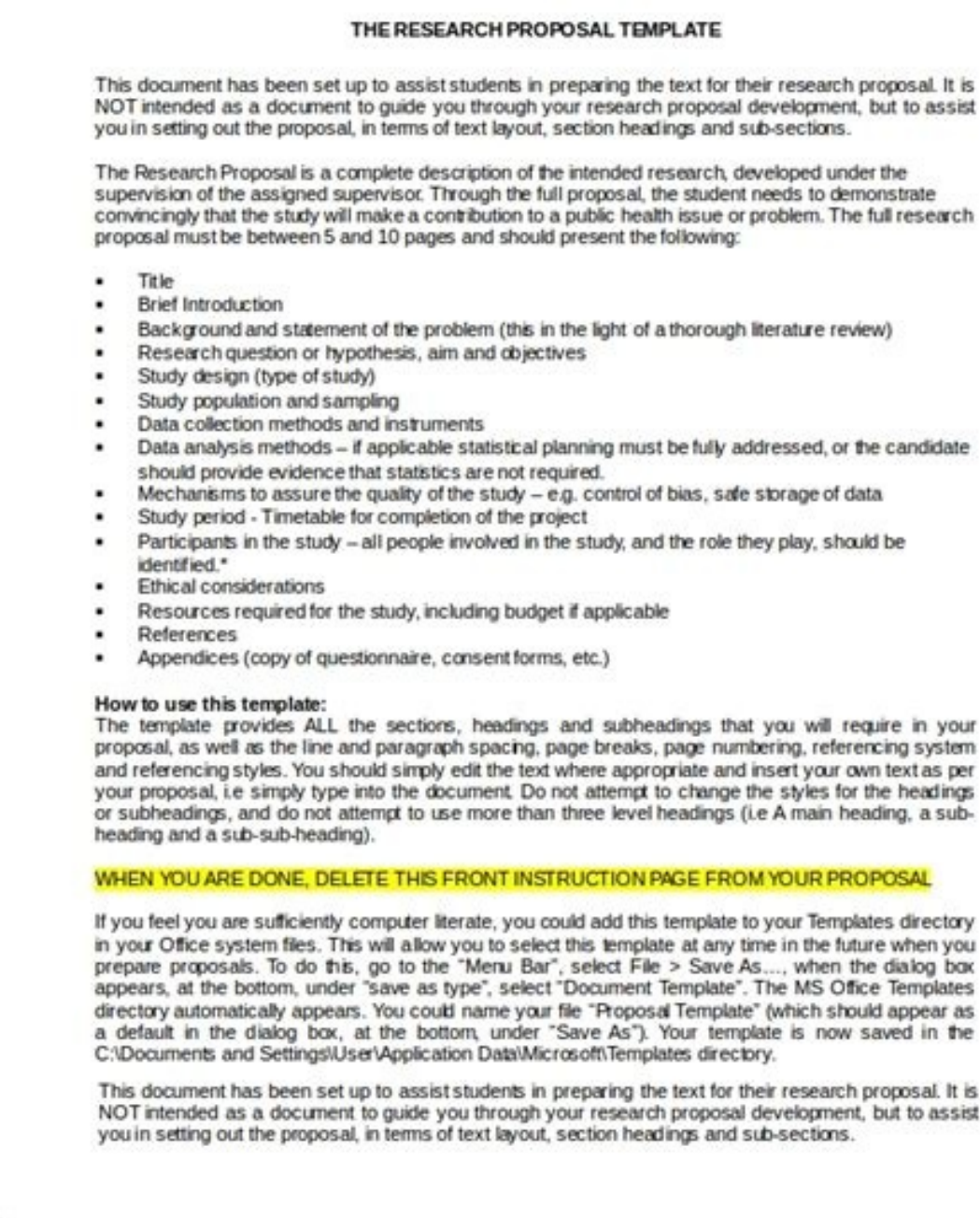
Scope of the study in research proposal example pdf

Scope of research proposal example. What is the scope of the study in research proposal. Scope of the study in research proposal example. How do you write a research proposal pdf. How to write scope of study in research proposal.

Scope of research refers to the range of topics, areas, and subjects that a research project intends to cover. It is the extent and limitations of the study, defining what is included and excluded in the research. The scope of a research project depends on various factors, such as the research questions, objectives, methodology, and available resources. It is essential to define the scope of the research project clearly to avoid confusion and ensure that the study addresses the intended research questions. Writing the scope of the research involves identifying the specific boundaries and limitations of the study. Here are some steps you can follow to write a clear and concise scope of the research: Identify the research question: Start by identifying the specific question that you want to answer through your research. This will help you focus your research and define the scope more clearly. Define the objectives: Once you have identified the research question, define the objectives of your study. What specific goals do you want to achieve through your research? Determine the population and sample: Identify the population or group of people that you will be studying, as well as the sample size and selection criteria. This will help you narrow down the scope of your research and ensure that your findings are applicable to the intended audience. Identify the variables: Determine the variables that will be measured or analyzed in your research. This could include demographic variables, independent variables, dependent variables, or any other relevant factors. Define the timeframe: Determine the timeframe for your study, including the start and end date, as well as any specific time intervals that will be measured. Determine the geographical scope: If your research is location-specific, define the geographical scope of your study. This could include specific regions, cities, or neighborhoods that you will be focusing on.



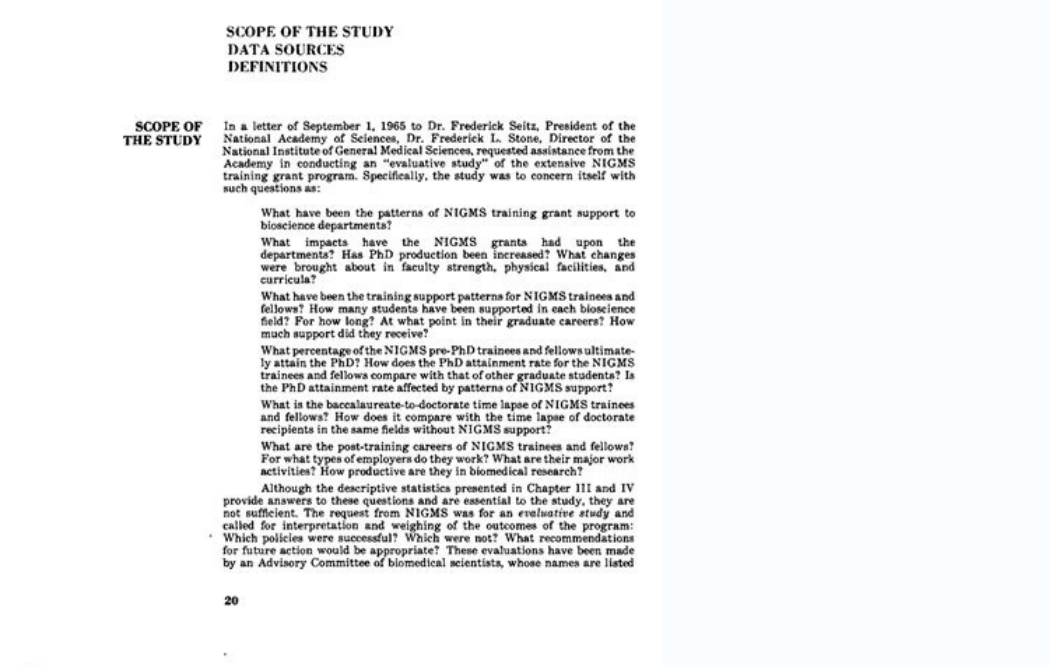
Outline the limitations: Finally, outline any limitations or constraints of your research, such as time, resources, or access to data. This will help readers understand the scope and applicability of your research findings. Some Examples of the Scope of the Research are as follows: Example 1: Title: "Investigating the impact of artificial intelligence on job automation in the IT industry" Scope of Research: This study aims to explore the impact of artificial intelligence on job automation in the IT industry. The research will involve a qualitative analysis of job postings, identifying tasks that can be automated using AI. The study will also assess the potential implications of job automation on the workforce, including job displacement, job creation, and changes in job requirements. Example 2: Title: "Developing a machine learning model for predicting cyberattacks on corporate networks" Scope of Research: This study will develop a machine learning model for predicting cyberattacks on corporate networks. The research will involve collecting and analyzing network traffic data, identifying patterns and trends that are indicative of cyberattacks. The study aims to build an accurate and reliable predictive model that can help organizations identify and prevent cyberattacks before they occur. Example 3: Title: "Assessing the usability of a mobile app for managing personal finances" Scope of Research: This study will assess the usability of a mobile app for managing personal finances. The research will involve conducting a usability test with a group of participants, evaluating the app's ease of use, efficiency, and user satisfaction. The study aims to identify areas of the app that need improvement, and to provide recommendations for enhancing its usability and user experience. Example 4: Title: "Exploring the effects of mindfulness meditation on stress reduction among college students" Scope of Research: This study aims to investigate the impact of mindfulness meditation on reducing stress levels among college students. The research will involve a randomized controlled trial with two groups: a treatment group that receives mindfulness meditation training and a control group that receives no intervention. The study will examine changes in stress levels, as measured by self-report questionnaires, before and after the intervention. Example 5: Title: "Investigating the impact of social media on body image dissatisfaction among young adults" Scope of Research: This study will explore the relationship between social media use and body image dissatisfaction among young adults. The research will involve a cross-sectional survey of participants aged 18-25, assessing their social media use, body image perceptions, and self-esteem. The study aims to identify any correlations between social media use and body image dissatisfaction, and to determine if certain social media platforms or types of content are particularly harmful. Here is a guide on When to Write the Scope of the Research: Before starting your research project, it's important to clearly define the scope of your study. This will help you stay focused on your research question and avoid getting sidetracked by irrelevant information. The scope of the research should be determined by the research question or problem statement. It should outline what you intend to investigate and what you will not be investigating. The scope should also take into consideration any limitations of the study, such as time, resources, or access to data. This will help you realistically plan and execute your research. Writing the scope of the research early in the research process can also help you refine your research question and identify any gaps in the existing literature that your study can address. It's important to revisit the scope of the research throughout the research process to ensure that you stay on track and make any necessary adjustments. The scope of the research should be clearly communicated in the research proposal or study protocol to ensure that all stakeholders are aware of the research objectives and limitations. The scope of the research should also be reflected in the research design, methods, and analysis plan. This will ensure that the research is conducted in a systematic and rigorous manner that is aligned with the research objectives. The scope of the research should be written in a clear and concise manner, using language that is accessible to all stakeholders, including those who may not be familiar with the research topic or methodology. When writing the scope of the research, it's important to be transparent about any assumptions or biases that may influence the research findings. This will help ensure that the research is conducted in an ethical and responsible manner. The scope of the research should be reviewed and approved by the research supervisor, committee members, or other relevant stakeholders.



This will ensure that the research is feasible, relevant, and contributes to the field of study. Finally, the scope of the research should be clearly stated in the research report or dissertation to provide context for the research findings and conclusions. This will help readers understand the significance of the research and its contribution to the field of study. Purposes of Scope of the Research are as follows: Defines the boundaries and extent of the study. Determines the specific objectives and research questions to be addressed. Provides direction and focus for the research. Helps to identify the relevant theories, concepts, and variables to be studied. Enables the researcher to select the appropriate research methodology and techniques. Allows for the allocation of resources (time, money, personnel) to the research. Establishes the criteria for the selection of the sample and data collection methods. Facilitates the interpretation and generalization of the results. Ensures the ethical considerations and constraints are addressed. Provides a framework for the presentation and dissemination of the research findings. Here are some advantages of having a well-defined scope of research: Provides clarity and focus: Defining the scope of research helps to provide clarity and focus to the study. This ensures that the research stays on track and does not deviate from its intended purpose. Helps to manage resources: Knowing the scope of research allows researchers to allocate resources effectively.

CHAPTER II

SCOPE OF THE STUDY



This includes managing time, budget, and personnel required to conduct the study. Improves the quality of research: A well-defined scope of research helps to ensure that the study is designed to achieve specific objectives. This helps to improve the quality of the research by reducing the likelihood of errors or bias. Facilitates communication: A clear scope of research enables researchers to communicate the goals and objectives of the study to stakeholders, such as funding agencies or participants. This facilitates understanding and enhances cooperation. Enables replication: A well-defined scope of research makes it easier to replicate the study in the future. This allows other researchers to validate the findings and build upon them, leading to the advancement of knowledge in the field. Increases the relevance of research: Defining the scope of research helps to ensure that the study is relevant to the problem or issue being investigated. This increases the likelihood that the findings will be useful and applicable to real-world situations. Reduces the risk of scope creep: Scope creep occurs when the research expands beyond the original scope, leading to an increase in the time, cost, and resources required to complete the study. A clear definition of the scope of research helps to reduce the risk of scope creep by establishing boundaries and limitations. Enhances the credibility of research: A well-defined scope of research helps to enhance the credibility of the study by ensuring that it is designed to achieve specific objectives and answer specific research questions. This makes it easier for others to assess the validity and reliability of the study. Provides a framework for decision-making: A clear scope of research provides a framework for decision-making throughout the research process. This includes decisions related to data collection, analysis, and interpretation. Scope of ResearchScope of ProjectA focused and specific implementation of a solutionFocused and specific implementation of a solutionSeeks to explore and discover new information and knowledgeAims to solve a problem or address a specific needCan be theoretical or practical in natureGenerally practical, with tangible deliverablesMay involve data collection, analysis, and interpretationInvolves planning, execution, and monitoring of tasks and activitiesUsually conducted over a longer period of timeHas a defined timeline and milestonesMay result in publications, reports, or academic degreesResults in a product, service, or outcome that meets the project objectivesCan have implications beyond the specific project or applicationHas a direct impact on the stakeholders and users involved in the projectThe scope of the study is defined at the start of the research project before data collection begins. It is used by researchers to set the boundaries and limitations within which the study will be performed.In this post you will learn exactly what the scope of the study means, why it is important in your research, how you would write one and finally you'll be presented with an example scope of a study. What is the Scope of the Study?The scope of the study refers to the boundaries within which your research project will be performed; this is sometimes also called the scope of research. To define the scope of the study is to define all aspects that will be considered in your research project. It is also just as important to make clear what aspects will not be covered; i.e. what is outside of the scope of the study. Why is the Scope of the Study Important?The scope of the study is always considered and agreed upon in the early stages of the project, before any data collection or experimental work has started. This is important because it focuses the work of the proposed study down to what is practically achievable within a given timeframe. A well-defined research or study scope enables a researcher to give clarity to the study outcomes that are to be investigated. It makes clear why specific data points have been collected whilst others have been excluded. Without this, it is difficult to define an end point for a research project since no limits have been defined on the work that could take place. Similarly, it can also make the approach to answering a research question too open ended.

Steps in Developing Research Proposal

1. Title page & table of contents
2. Introduction
3. Statement of the problem
4. Scope of the study
5. Objectives of the study
6. Hypothesis or research questions
7. Literature Review
8. Procedure of the study
9. Limitation and delimitation of the study

11.Bibliography

How do you Write the Scope of the Study? In order to write the scope of the study that you plan to perform, you must be clear on the research parameters that you will and won't consider. These parameters usually consist of the sample size, the duration, inclusion and exclusion criteria, the methodology and any geographical or monetary constraints. Each of these parameters will have limits placed on them so that the study can practically be performed, and the results interpreted relative to the limitations that have been defined. These parameters will also help to shape the direction of each research question you consider. The term 'limitations' is often used together with the scope of the study to describe the constraints of any parameters that are considered and also to clarify which parameters have not been considered at all. Make sure you get the balance right here between not making the scope too broad and unachievable, and it not being too restrictive, resulting in a lack of useful data. The sample size is a commonly used parameter in the definition of the research scope. For example, a research project involving human participants may define at the start of the study that 100 participants will be recruited. This number will be determined based on an understanding of the difficulty in recruiting participants to studies and an agreement of an acceptable period of time in which to recruit this number. Any results that are obtained by the research group can then be interpreted by others with the knowledge that the study was capped to 100 participants and an acceptance of this as a limitation of the study. In other words, it is acknowledged that recruiting 100 rather than 1,000 participants has limited the amount of data that could be collected, however this is an acceptable limitation due to the known difficulties in recruiting so many participants (e.g. the significant period of time it would take and the costs associated with this). Example of a Scope of the StudyThe follow is a (hypothetical) example of the definition of the scope of the study, with the research question investigating the impact of the COVID-19 pandemic on mental health. Whilst the immediate negative health problems related to the COVID-19 pandemic have been well documented, the impact of the virus on the mental health (MH) of young adults (age 18-24 years) is poorly understood. The aim of this study is to report on MH changes in population group due to the pandemic. The scope of the study is limited to recruiting 100 volunteers between the ages of 18 and 24 who will be contacted using their university email accounts. This recruitment period will last for a maximum of 2 months and will end when either 100 volunteers have been recruited or 2 months have passed. Each volunteer to the study will be asked to complete a short questionnaire in order to evaluate any changes in their MH. From this example we can immediately see that the scope of the study has placed a constraint on the sample size to be used and/or the time frame for recruitment of volunteers. It has also introduced a limitation by only opening recruitment to people that have university emails; i.e. anyone that does not attend university will be excluded from this study. This may be an important factor when interpreting the results of this study; the comparison of MH during the pandemic between those that do and do not attend university, is therefore outside the scope of the study here. We

are also told that the methodology used to assess any changes in MH are via a questionnaire. This is a clear definition of how the outcome measure will be investigated and any other methods are not within the scope of research and their exclusion may be a limitation of the study. Conclusion The scope of the study is important to define as it enables a researcher to focus their research to within achievable parameters.