



Masonic
Charitable Foundation



YORKSHIRE, WEST RIDING 2028 FESTIVAL APPEAL



**MAKING A
DIFFERENCE**



Supporting your Masonic charity

Follow us on social media:
#YWR2028FESTIVAL

Message from the PGM

RW Bro James Henry Newman OBE
Provincial Grand Master



It is a huge personal pleasure for me to launch the Province's first-ever Festival for the Masonic Charitable Foundation (MCF), the Freemasons' national charity and your charity as Brethren and Companions of this Province.

Having spent almost the last 20 years heavily involved with the national Masonic charities, I know only too well the fantastic support they have given to Freemasons and their families for over 230 years and how they have helped to raise the profile of Freemasonry as a 'force for good in society', by providing much-needed funding to many national and local charities and community groups. As Freemasons, we should be so proud that all our Masonic charities are funded solely through Masonic giving without having to raise donations from the general public.

When the four main national charities were merged to create the MCF in early 2016, the new charity set out to maintain those principles and put new policies and procedures in place to maximise the impact its financial support had on its beneficiaries. You can read in this

brochure the impact, at both national and provincial levels, that the MCF has had since it was founded, and I am sure you will all agree that it has been an outstanding success.

The members of this Province and the charities operating within its geography alone have received support averaging over £600,000 per year since the MCF was created, so over the eleven-year Festival cycle, the Province will benefit by over £7 million. Therefore, whilst our target of £4 million is ambitious, it only supports around 60 per cent of what we receive back from the MCF.

So, as you can see, to maintain this level of financial support now and into the future, the MCF needs our help. Whether you have been in Freemasonry a long time or have just started on your Masonic



journey, you never know when you may need the MCF's support, be it redundancy, childcare, educational or medical help or residential care when you get older.

I am, therefore, asking everyone, if you can afford to do so, to support this Festival by donating individually or through their Lodge and Chapter. We can all remember the ritual in the northeast corner when we were initiated, and those words should still have the same meaning now as they did then, however long ago you heard them for the first time.

After the difficult time we all had during the pandemic, this Festival will give everyone in the Province the opportunity to have some fun, enjoy more social events and come together for such a 'good cause'.

Our Festival Committee, chaired by John Williams, has been working hard over the last year carefully planning how the Festival will work, establishing good relationships with the fundraising team at the MCF and preparing a way to make it easy to donate, understand more about the MCF and make sure we all have a good time along the way.

My wife, Lesley, and I are very much looking forward to enjoying participating in the many events that will take place, and we both hope you and your families will join us in making this Festival our most successful to date and one of which we can, as Yorkshire folk, be very proud.



Message from the Chairman

W. Bro John S Williams ProvJGW
Festival Appeal Chairman

Every 11 years, the MCF invites our Provincial Grand Master to launch an appeal for the purpose of raising vital funds for the MCF. On 23 September 2023, the Provincial Grand Master will officially launch our 2028 Festival. This will give us all a single, unifying objective to swell even further the £130 million that the MCF has, over the last seven years, already awarded in grants to charities, charitable causes and individuals who are vulnerable or otherwise in need. Many of these deserving causes are on our doorstep, and you can read more about some of them, and how the MCF has helped, in this brochure.



The Masonic Charitable Foundation (MCF) is the national Freemasons' Charity. It is funded and administered by Freemasons to provide support for them, their families and the wider community. The MCF has, without doubt, been one of Freemasonry's most successful recent headline initiatives.

A few months ago, I found myself at a loose end in London. I decided to call into Grand Lodge and see whether I could have a coffee with Paul Crockett, Head of Fundraising at the MCF. Seeing first-hand the scale of the operation that is run from Great Queen Street was, to say the least, eye-opening. The enthusiasm to help, the raw determination to ease suffering and anxiety and the bare humanity on display was humbling. Paul's colleagues talked to me with passion about the relief they were providing across the country to people in truly desperate need and to charities that were struggling to continue offering much needed support. There



have been many times I have walked out of Masonic Halls full of good intentions to be a better person and to do more. But I have never felt it more so than on that November afternoon.

This Province contains all the ingredients for this Festival not just to succeed but to surpass expectations. We are fearless, determined and passionate. We are greater than the sum of our various parts, and we relish a challenge. Having benefited from seeing the inner workings of the MCF last year and the selfless drive to help those less fortunate than ourselves, I would like to encourage all of you to play your part in surpassing those expectations that the MCF has of our Province. We have set ourselves an audacious target of £4 million, but with typical Yorkshire grit and generosity, I have no doubt that we will get there.

Over the next five years, there will be lots for you to get involved in, plenty of merchandise to buy, briefings on the national and local work of the MCF and some spectacular fundraising events for Areas, Lodges and families to enjoy. However, for now, I would like to urge as many of you as possible to make an early commitment by pledging to become a Steward of the Festival. Whilst higher honorifics are available, I would like to

see as many Brethren as possible wearing the 2028 Festival Jewel at the launch in September. A monthly commitment of £10 over the term of the Festival (or a one-off payment of £600) will qualify you as a Steward of the Festival and entitled to wear the Jewel (which will be sent to you in the post free of charge). The bank mandate you need to complete is at the back of this brochure.

Finally, I would like to offer my sincere gratitude to West Riding Masonic Activities and West Riding Masonic Charities for their welcome support and for the professional and tireless commitment that I have been given by the members of the Festival Organising Committee. They are:

- **W Bro. Roger Powell ProvSGD**, Secretary
- **W Bro. Andrew Cole ProvJGD**, Finance
- **W Bro. Adrian Collins PPJGW**, Social Media and Communications
- **Bro. Chris MacCormac**, Events
- **W Bro. Jason Moody ProvSGD**, Events
- **W Bro. John Birkenshaw ProvGChStwd**, Charity
- **W Bro. Phil Atkinson PPGStwd**, Merchandise

Message from the Orders

“Dear Companions and Brethren, on behalf of the Companions of the Order of Royal and Select Masters in the District of West Yorkshire, I have great pleasure in pledging my full support to the 2028 Yorkshire West Riding MCF Festival, wishing it and all the Brethren and Companions across the Province every success over the next five years.”



R.III.Comp. Fraser McPherson

District Grand Master
Order of Royal and
Select Masters

“The Ancient and Accepted Rite, or Rose Croix, is one of the oldest and most beautiful Orders in Freemasonry. The Grand Patron is HRH, The Duke of Kent KG, reflecting the links between Craft and the Ancient and Accepted Rite. We are delighted to pledge our full support during the 2028 Festival.”



**Very Illustrious Brother
Ian C. Smith 33°**

Inspector General for
Yorkshire West Riding

“In thanking the Craft and Holy Royal Arch, for their magnificent support of our 2023 M.B.F. Festival, the Mark & Royal Ark Mariner Brethren of West Yorkshire now pledge their full support for the 2028 YWR Festival and associated fundraising.”



R.W. James Steggles

Provincial Grand Master Mark
Master Masons and Royal
Ark Mariners

“Charity stands as one of the chief cornerstones of Freemasonry. With the launch of the 2028 MCF Festival in Yorkshire, West Riding, I am sure that Royal Order of Scotland members within the West Yorkshire Province will afford it their full support over the next five years.”



**The Provincial Grand
Master Eric Brown**

Royal Order of Scotland

“As the Provincial Grand Master/Most Excellent Grand Superintendent supports our order I trust all members of the OSC will support him and his Festival. He has assembled a talented and hard-working team and I ask you all to answer the call and give your most generous support to their efforts.”



Rt. Dist Comp Alan P. K. Webster

The Ancient and Masonic Order of the Scarlet Cord in the British Isles and its Districts and Consistories Overseas Provincial Grand Senatus of West Yorkshire

“The Allied Degrees, District of Yorkshire wishes the 2028 YWR MCF Festival, every success and will endeavour to support them in their efforts, to the best of our ability, as we always try to do.”



R.W. Bro. Brian Butterfield

District Grand Prefect for the
District of Yorkshire.

“The Red Cross of Constantine (West Yorkshire Division) wish the organisers of the 2028 WYR MCF all our heartfelt fraternal best wishes, good luck, and pledge to support the Festival by enacting the watchwords of our order – In Faith, Unity & Zeal.”



Rt. Ill Kt. Dr Raymond Johnson

Intendent General of the
Red Cross of Constantine

“In all the ceremonies of the Order of the Secret Monitor, the principles of friendship and caring for others is exemplified. Officers are specifically appointed to seek out, visit and console those who stand in need of fraternal help and assistance.

The principles of the MCF are also based on caring for others and typify the teachings of our Order. As such, I would encourage all our members to assist where they are able in fundraising activities to ensure a successful and fruitful 2028 MCF Festival.”



R.Wy. Bro. David Staniforth

Provincial Grand Supreme Ruler
Secret Monitor

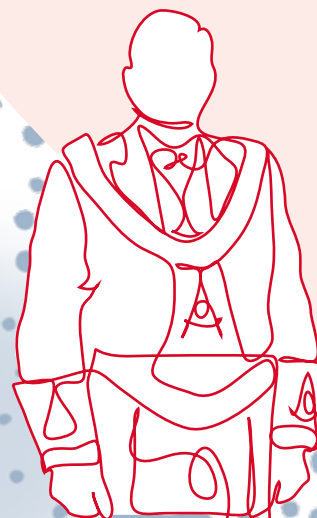
“Whilst the Order of Knights Templar supports the St John of Jerusalem Eye Hospital as its regular charity; we are delighted to extend our charitable activity to support the Craft 2028 MCF Festival.

We consider that becoming a member of our Order offers an ideal opportunity for a Brother to learn more about our fascinating history and enrich his Masonic life.”



R.E. Kt. Hearl R. Lenton,

Provincial Prior
Order of Knights Templar



Why should I support the Yorkshire, West Riding 2028 Festival Appeal?

The MCF is your charity

Freemasonry has a long and proud history of charitable giving, which continues today through the work of the MCF.

The MCF builds better lives by encouraging opportunity, promoting independence and improving the wellbeing of Freemasons, their families and the wider community.

The MCF relies on the Masonic community to identify those in need and to provide the generous donations that fund their entire work.

Every year the MCF supports

5,000 members of the Masonic community at a cost of over **£15 million** and hundreds of charities totaling **£5.5 million**.

 **Support in Yorkshire, West Riding**
DURING 2021/22 THE MCF HAS GIVEN **173**
GRANTS TO SUPPORT OUR MASONIC COMMUNITY TOTALLING
£421,536 
27 **LOCAL CHARITIES RECEIVED SUPPORT, WITH GRANTS TOTALLING**
£347,725



By donating to the MCF you could...

- Help families make ends meet when times get tough
- Give greater independence to people with disabilities
- Give young people the opportunity to succeed in their education
- Provide high-quality care for older, disabled or seriously ill people
- Fund life-saving and life-changing medical treatment
- Tackle social isolation and loneliness
- Advance ground-breaking medical research



West Riding Masonic Charities Limited (WRMCL), 'Your Charity', fully supports the Province in raising funds for the MCF over the five-year Festival.

There is a strong history of charitable giving in Yorkshire, West Riding. In 1828, the Provincial Grand Chaplain was tasked with forming a Charity Committee, which he did the following year and which was named the Provincial Grand Lodge of Benevolence of West Yorkshire.

In 1926, the Charity formally derived its powers and privileges from Provincial Grand Lodge and in 1945, West Riding Masonic Charities Limited was created.

To coincide with the culmination of the 2028 Festival Appeal West Riding Masonic Charities will celebrate its Bicentennial and would anticipate supporting the Festival from its own Funds, as it has done in previous Festivals.

WRMCL will, throughout the period of the Festival, continue to support Brethren of the Province, their dependants and local communities in time of need, via all our network of services but mainly through our two main funds, the West Riding Masonic Care and Support Fund and the West Riding Community Fund, (including the Lord Lieutenancy Schemes).

In other words, it is 'business as usual' for WRMCL and anyone in need of care and financial support will get it.

The Charity will also be supporting the Festival by assisting the Festival Committee in their administration of donations from Lodges, Chapters and individual members of the Province by utilising current donation processes as an alternative to donations made directly to the MCF Relief Chest.

It is important to note that all donations made either via WRMCL or directly to the MCF from 2 May 2023, will automatically count towards both Festival and WRMCL patronage and honorifics.



When Gus was 17 years old, his father died suddenly, leaving behind Gus, his mother and two sisters.

“My family heard of the MCF through my grandma. We got in touch, and they gave me a grant for educational expenses, which helped massively because my mother was a single mother, and it was often difficult for her to afford the things I needed and to help me out as much as she wanted to. The MCF also gave me a laptop with a lot of accessories, which at university is essential.”

“In my last year of university, I realised that I really wanted to become a teacher. To get onto a teacher training course, I had to work as a teacher, not being paid. The MCF once again stepped up and gave me a grant to help me through that year.

“I’m a PE teacher now, and I absolutely love what I do. I would really recommend anyone facing hard times to contact the MCF. They can help in so many different ways.”

When Margaret developed a problem with her wrist, she found herself facing a huge NHS waiting list, so she turned to us for help.

“I had four operations cancelled in a year – every time I was given a date for the surgery, it was cancelled. I eventually had emergency surgery, but it failed, and this was the start of a series of unsuccessful operations.

“I was finding it hard to get on with everyday life, so my husband Ray suggested I ask the MCF for help. Our Almoner came round and sat us down, and together we filled out an application – job done!

“The MCF provided me with funding for another operation, and thankfully things are looking good so far. In fact, I hope to start driving again soon – good news for Ray, since he doesn’t drive so I am his chauffeur! The MCF has really come up trumps and I am massively grateful for all of their help.”



How can I get involved with the Yorkshire, West Riding Festival Appeal?

By taking these three easy steps, you can make a huge difference to the Yorkshire, West Riding 2028 Festival Appeal and the people we support:

- 1 Donate**
- 2 Fundraise**
- 3 Spread the word**

1 Donate

There are lots of different ways you can donate to the Yorkshire, West Riding Festival Appeal, whether it’s a one-off donation or a long-term commitment. However donations are made, they will count towards individual or Lodge honorifics.

Donate online

Make a single donation or set up a regular donation:

 mcf.org.uk/YorksWestRiding2028

Donate over the phone

To set up a regular donation:

 **020 3146 3345**

To make a single donation by debit or credit card:

 **020 3146 3346**

Use Gift Aid envelopes

The MCF can supply Gift Aid envelopes for alms collections, festive boards and other occasions; use of the envelopes will boost eligible donations by 25 per cent.

Envelopes can be obtained from the Provincial office:

 **0113 278 2451**

Get in touch

For further guidance on how to donate, get in touch with the Relief Chest team:

 reliefchest@mcf.org.uk

 020 3146 3352




Use paper forms

You can complete the form at the back of this booklet, or download the donation form that's right for you from the MCF website:

 [mcf.org.uk/
YorksWestRiding2028](https://mcf.org.uk/YorksWestRiding2028)

Completed forms and Gift Aid envelopes should be returned to:

 **Relief Chest Scheme
Masonic Charitable
Foundation,
60 Great Queen Street,
London WC2B 5AZ**

Donate using a QR code

Scan this QR code
with your phone to
make a donation

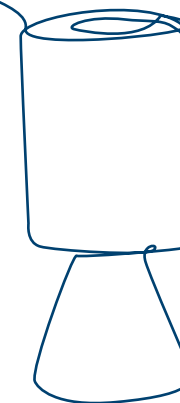


2 Fundraise

Social or sponsored events will raise vital funds for the Festival and it is important that each Lodge gives careful consideration to planning and holding one or more events each year.

Make it fun

There are many ways of taking part in raising money. You could arrange a quiz night or special dinner, take part in a daring challenge or sign up for a sponsored event – whatever you do, make it fun!



Make it easy

Setting up an online fundraising page takes just a few minutes and is an easy way for your friends and family to sponsor you. All the donations will go directly into the Festival Relief Chest, saving you time and helping you focus on your fundraising.

Sharing your page through social media or email is a great way to build momentum and keep your friends updated.

Visit the MCF website to create your online fundraising page:

 [mcf.org.uk/
YorksWestRiding2028](https://mcf.org.uk/YorksWestRiding2028)

The MCF's sponsorship and Gift Aid forms make it easy to collect donations both in person and online.

Visit the MCF website and download the donation forms you need to start fundraising:

 [mcf.org.uk/
YorksWestRiding2028](https://mcf.org.uk/YorksWestRiding2028)

 020 3146 3333



giftaid it

Make it worth more

If you are a UK taxpayer, the MCF can reclaim an extra 25p for every £1 you give. It won't cost you any extra – all you have to do is make a Gift Aid declaration.

You can find out more about Gift Aid on the Relief Chest Scheme resources page:

 mcf.org.uk/reliefchest/resources

Make it MCF

From running tops and water bottles, to keyrings and coasters; the MCF has a wide range of branded merchandise that will help you to get in the fundraising spirit and spread the word.

Contact us to get inspired:

 communications@mcf.org.uk



3 Spread the word!

The 2028 Festival Appeal is not just a chance to raise vital funds for the MCF; it is also an opportunity to educate every member in Yorkshire, West Riding, about the support available and the work carried out in your area, so that if anyone ever finds themselves in need, they know that they can approach the MCF.

To find out more about the MCF's impact in your area visit:

 impact.mcf.org.uk/2022/how-we-helped-your-local-community

Get online

Keep up to date with all the latest MCF news by subscribing to their newsletter or following them on social media. Comment on stories and share them with friends and family to spread the word.

 mcf.org.uk/sign-up
 [@themcf](https://www.facebook.com/themcf)
 [@Masonic_Charity](https://twitter.com/Masonic_Charity)
 [@masonic_charity](https://www.instagram.com/masonic_charity)
 [/MasonicCharitableFoundation](https://www.youtube.com/MasonicCharitableFoundation)



The Direct Debit Guarantee

- This Guarantee is offered by all banks and building societies that accept instructions to pay Direct Debits.
- If there are any changes to the amount, date or frequency of your Direct Debit The Grand Charity of the United Grand Lodge of England will notify you ten working days in advance of your account being debited or as otherwise agreed. If you request The Grand Charity of the United Grand Lodge of England to collect a payment, confirmation of the amount and date will be given to you at the time of the request.
- If an error is made in the payment of your Direct Debit by The Grand Charity of the United Grand Lodge of England or your bank or building society, you are entitled to a full and immediate refund of the amount paid from your bank or building society. If you receive a refund you are not entitled to, you must pay it back when The Grand Charity of the United Grand Lodge of England asks you to.
- You can cancel a Direct Debit at any time by simply contacting your bank or building society. Written confirmation may be required. Please also notify us.

Honorifics

Individual honorifics

The Province of Yorkshire, West Riding wishes to acknowledge the generosity of its members by issuing Festival jewels to all qualifying Brethren. The Province fully understands that it may not be within every brother's means to qualify for the various honorifics and greatly appreciates all donations made.

Become a **Steward*** of the 2028 Festival by paying or promising to pay a minimum of £600 towards the Festival Appeal. Once qualified and on payment of £10 you will receive your Festival jewel.

Become a **Vice-Patron*** of the 2028 Festival by paying a minimum of £750 towards the Festival Appeal.

Become a **Patron*** of the 2028 Festival by paying a minimum of £1,500 towards the Festival Appeal.

Become a **Grand-Patron*** of the 2028 Festival by paying a minimum of £2,250 towards the Festival Appeal.

Partners may become a **Steward** of the 2028 Festival by paying a minimum of £50 (excluding Gift Aid).



Lodge honorifics

Details of honorific targets for Lodges and Chapters will be provided to each Lodge and Chapter in due course. Each Lodge and Chapter will have a target that is proportionate to the number of its members as at 23 May 2023.

A Lodge or Chapter achieving 75 per cent of its target will become a Vice Patron of the Festival, a Lodge or Chapter achieving its target will become a Patron of the Festival and if a Lodge or Chapter exceeds its target by 25 per cent it will become a Grand Patron of the Festival.

* = excluding Gift Aid and the interest awarded by the MCF.

The Freemasons' Grand Charity

(Registered Charity No. 281942)

Instruction to your Bank/Building Society to pay by Direct Debit

Service user number

926096

Reference number

/

Instruction to your bank or building society
Please pay The Grand Charity of the United Grand Lodge of England Direct Debits from the account detailed in this instruction subject to the safeguards assured by the Direct Debit Guarantee. I understand that this instruction may remain with The Grand Charity of the United Grand Lodge of England and, if so, details will be passed electronically to my bank/building society.

Signature(s)

/

Date :

/ /

The Freemasons' Grand Charity

(Registered Charity No. 281942)

Instruction to your Bank/Building Society to pay by Direct Debit

Please fill in the whole form using a ball point pen and send to:
The Freemasons' Grand Charity, 60 Great Queen Street, London WC2B 5AZ

Name and full postal address of your bank or building society

To: The Manager

Bank/Building Society

Address

Postcode

Name(s) of Account holder(s)

Bank/Building Society Account Number

Branch sort code

Banks and building societies may not accept Direct Debit instructions for some types of account

Regular Donations into the Relief Chest of the Yorkshire West Riding MCF 2028 Festival

I promise to pay you the actual sum of £ / 3 months 6 months every Month Year Payments are to start on 11 / / (This date must be at least two months after the date that you sign the form) and are to continue for a period of three four five or years thereafter, or until my death, whichever is earlier

Please allocate this Regular Donation to: Lodge/Chapter name Lodge/Chapter No. YWRMCF2028 Relief Chest No.

Yorkshire West Riding MCF 2028 Festival

Single Donations into the Relief Chest of the Yorkshire West Riding MCF 2028 Festival

Please tick one or more of the following as applicable: I enclose a cheque payable to Relief Chest for the sum of £ I made a donation of £ on or about the / / Please allocate this Single Donation to: Lodge/Chapter name Lodge/Chapter No. YWRMCF2028 Relief Chest No.

Yorkshire West Riding MCF 2028 Festival

Gift Aid

Boost your donation by 25p of Gift Aid for every £1 you donate

If you are a UK tax payer, under the Government's Gift Aid Scheme, the Relief Chest Scheme (The Grand Charity Registered Charity Number 281942) can reclaim the tax you have already paid on your donation and add it to the value of your gift.

Gift Aid is reclaimed by the charity from the tax you pay for the current tax year.

Your address is needed to identify you as a current UK taxpayer.

DECLARATION

I am a UK taxpayer and understand that if I pay less Income Tax and/or Capital Gains Tax than the amount of Gift Aid claimed on all my donations in that tax year it is my responsibility to pay any difference.

In order to Gift Aid your donation you must tick the relevant box(es) below.

☐ on this donation only ☐ in the past 4 years ☐ in the future

Please notify us if you:

1. Want to cancel this declaration

2. Change your name or your home address

3. No longer pay sufficient tax on your income and/or capital gains.

Date: / /

Signature

Personal Details:

Please enter your name and address IN FULL using BLOCK CAPITALS:

Title: Mr Mrs Dr Other (.....)

Surname:

Forename(s):

Address:

Postcode:

Telephone:

Signature

Support for Freemasons and their families

The MCF can provide a wide range of help and support for financial, health, family and care-related needs including:

Daily living costs

- Household arrears
- Support for rent and security deposit
- Emergency household repairs
- Boiler replacement
- White goods and furnishings
- Funeral costs
- Childcare costs

Health, care and wellbeing

- Initial consultations
- Investigative tests and scans
- Surgery
- Physiotherapy
- Manual therapy
- Speech therapy
- Occupational therapy assessments
- Mobility equipment
- Home adaptations
- Motability vehicle support
- Dental work
- Mental health support
- Short breaks for carers

Children, young people and education

- Computer equipment
- Educational assessments
- School fees – in exceptional circumstances
- Higher education
- Apprenticeships
- Childcare costs
- Support for exceptional talent

The above are not exhaustive lists of support available, and all support is considered on a case-by-case basis.

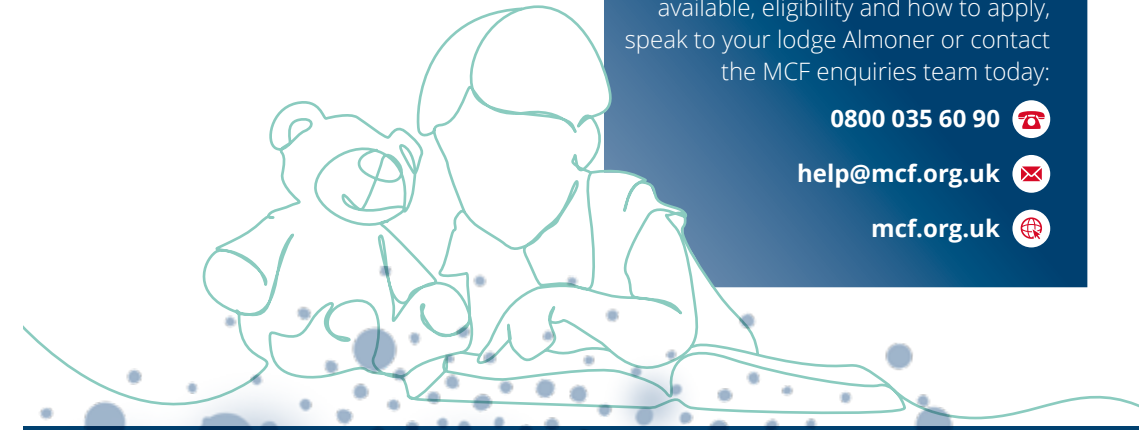
Can the MCF help you?

For advice about the support available, eligibility and how to apply, speak to your lodge Almoner or contact the MCF enquiries team today:

0800 035 60 90

help@mcf.org.uk

mcf.org.uk



Relief Chest Scheme Masonic Charitable Foundation, 60 Great Queen Street London WC2B 5AZ
Telephone: 020 3146 3352 Email: reliefchest@mcf.org.uk Web: www.mcf.org.uk/reliefchest

Regular & Single Donation Form

Relief Chest No: YWRMCF2028



Yorkshire West Riding

MCF 2028 Festival

Important Notes

1. This form contains a Single/Regular Donation, Gift Aid Declaration a Direct Debit Mandate and Guarantee. Please complete the relevant parts and pass it to your Relief Chest Representative.
2. All donations for the Relief Chest under a Regular Donation have to be made by Direct Debit from a Bank or Building Society account in the United Kingdom. Bank Standing orders, cash and cheques cannot be accepted for a Regular Donation. The charity is authorised to collect only the fixed amount specified on your form. The charity guarantees that it will make no other collections. Should it do so in error, a full and immediate refund will be made. To allow for both the charity and your Bank to process Direct Debits, this form must be received in the Relief Chest Scheme Office at least two months before the first payment is due.
3. You must complete a separate form for each Relief Chest if you wish to support more than one.
4. Please notify us if you change your name, address or Bank/Building Society details.
5. Tax cannot be reclaimed unless the relevant box(es) of the Gift Aid Declaration overleaf are ticked.
6. If you pay Income Tax at the higher or additional rate and want to receive the additional tax relief due to you, you must include all your Gift Aid donations on your Self-Assessment tax return or ask HM Revenue and Customs to adjust your tax code.

For further information on Gift Aid, please visit www.hmrc.gov.uk

Why not increase your donation by letting us reclaim your tax?

If you Gift Aid your donation, we can reclaim 25p of tax on every £1 you give.

giftaid it

Oral Gift Aid Declaration

For use by Relief Chest Representative only.

If the donor has completed this form overleaf please leave this section blank. If you have been unable to obtain the donor's signature you can ask them if they are willing to make a Gift Aid Declaration and then tell us if they agree. We do not require the donor's signature. We will simply confirm the details to the donor in writing. Please fill in the donor's full name and address, post code and Lodge/Chest information on the other side of this form and sign the declaration below.

I confirm that the person named overleaf told me on (date) that he/she wished all qualifying donations made to the Relief Chest Scheme (The Grand Charity Registered Charity Number 281942) in the last four years and all donations made in the future to be treated as Gift Aid until otherwise notified. If a valid Gift Aid Declaration from this donor is not already held, The Relief Chest office will confirm in writing to him/her.

Data Protection Act 2018 and the UK GDPR (General Data Protection Regulation) - Privacy Notice

The Relief Chest Scheme is committed to protecting your personal information. The scheme is fully compliant with DPA and UK GDPR legislation when handling your personal data. Our legal basis for collecting, processing and sharing personal information as set out in our Privacy Policy is based on the legitimate interest of the Relief Chest Scheme.

To find out more about how we handle, share and store your personal information and how to amend or request a copy of any personal information we hold about you, please visit <https://mcf.org.uk/policies/privacy/relief-chest-privacy-policy/>

Signature _____

Date _____

Building better lives

60 Great Queen Street | London | WC2B 5AZ

Tel: 020 3146 3333 | info@mcf.org.uk

mcf.org.uk

Charity number 1164703. Company number 09751836.

Keep up to date with all the latest Yorkshire,
West Riding 2028 Festival Appeal news:

 yorkshirewestridingfreemasons.org.uk

 [@YorkshireWestRidingFreemasons](https://www.facebook.com/YorkshireWestRidingFreemasons)

 [@WYFreemasons](https://twitter.com/WYFreemasons)

