

# *Pattern*

Design Book



*Proudly Serving the Mattress  
Industry Since 1986*

# *Class III*

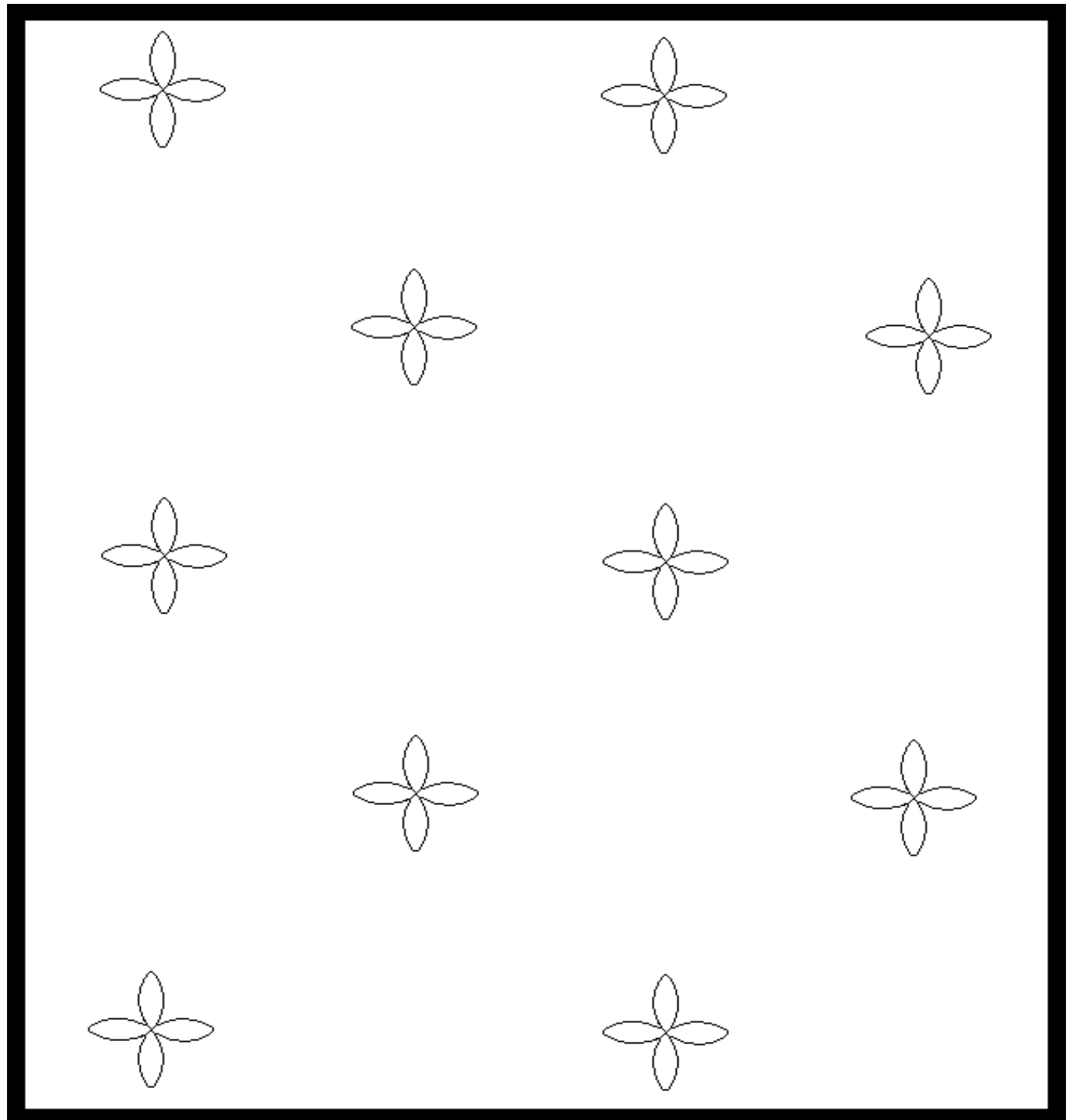
## *Tack & Jump Patterns*

\* Design has multiple configuration

~ Design has two configuration

*Design#*      ***4PETAL\****

---



# *Class III*

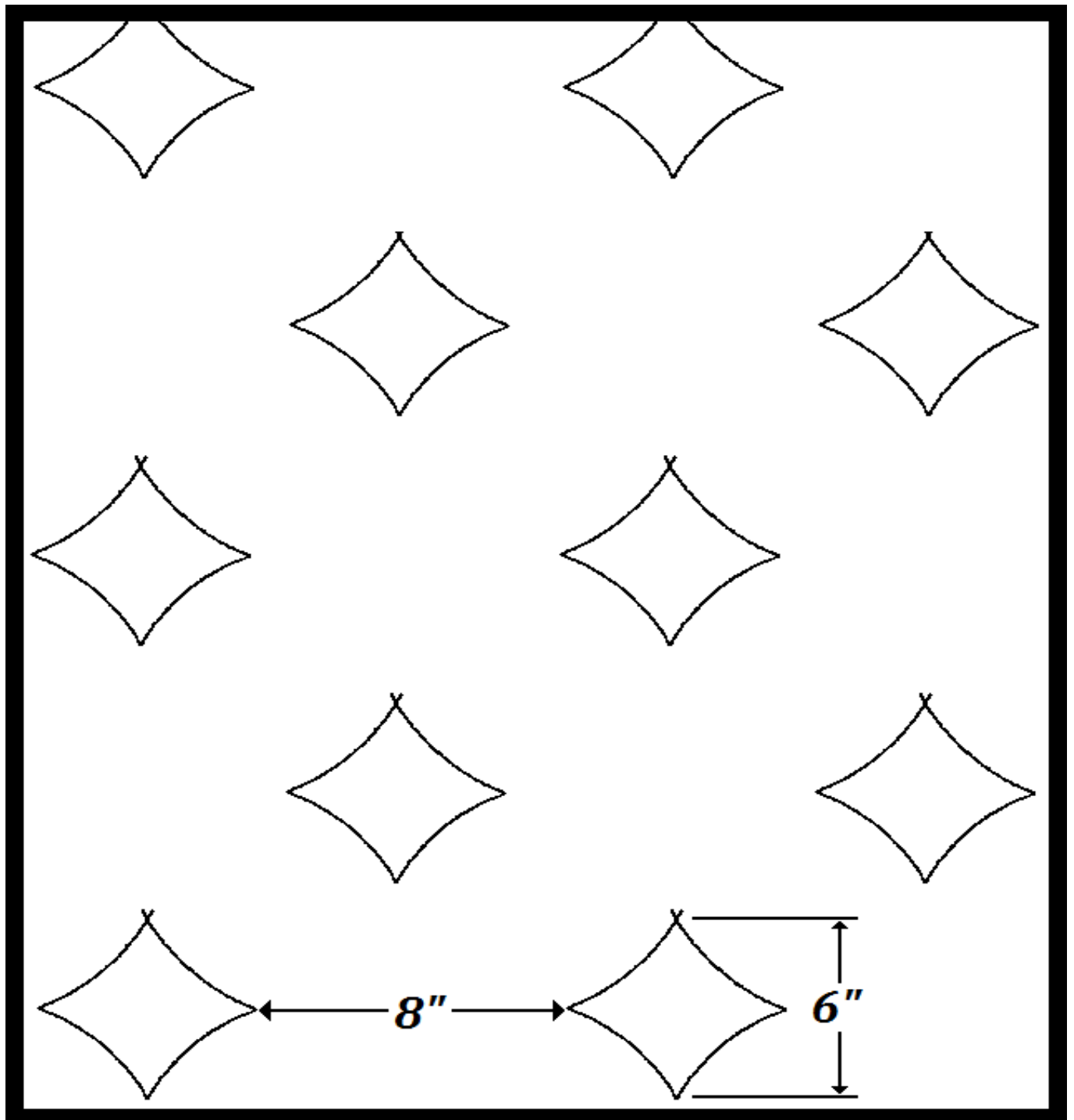
## *Tack & Jump Patterns*

\* Design has multiple configuration

~ Design has two configuration

*Design#*

***4STAR\****



# *Class III*

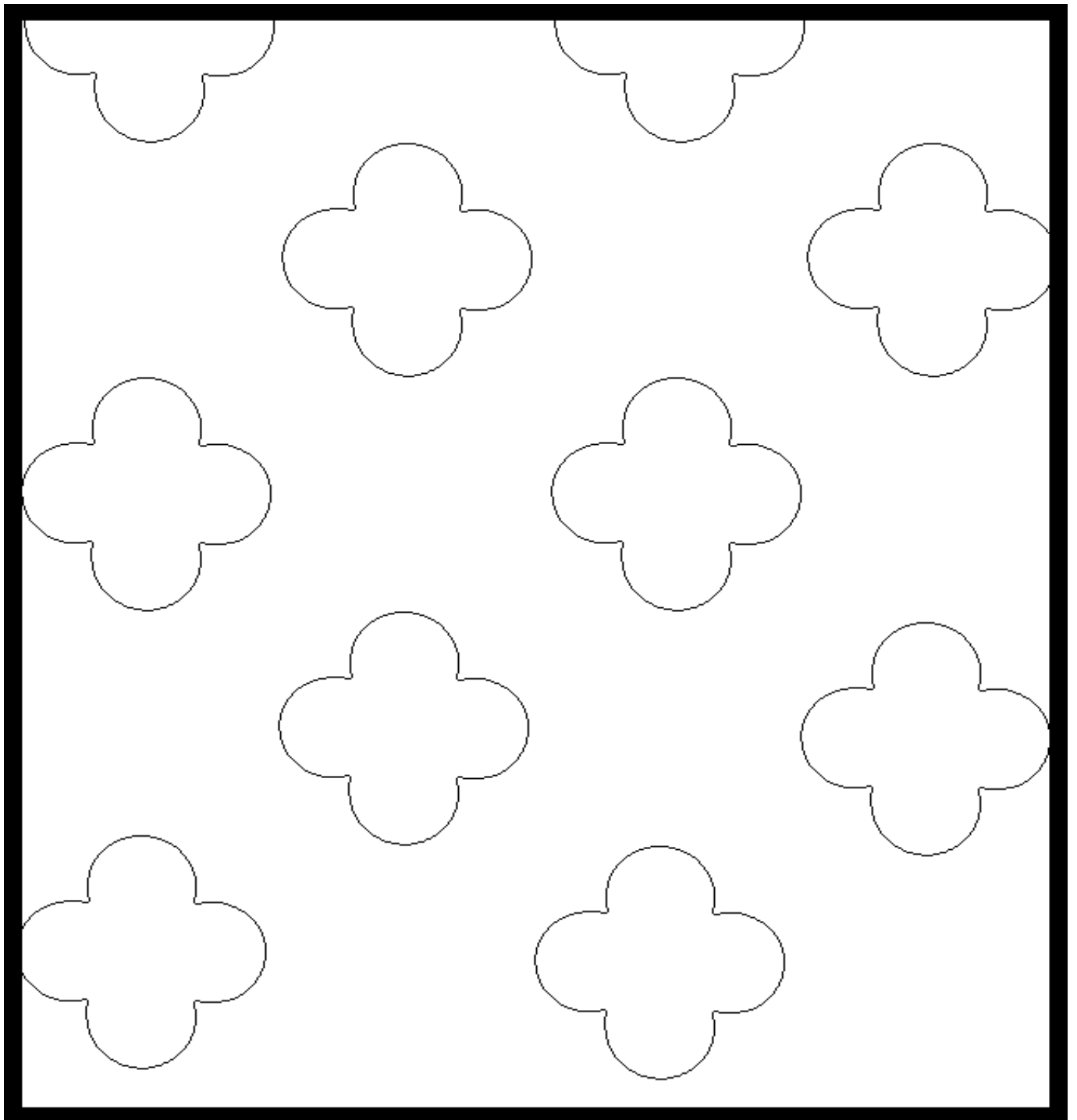
## *Tack & Jump Patterns*

\* Design has multiple configuration

~ Design has two configuration

*Design#*      **4CIRCLE\***

---



# *Class III*

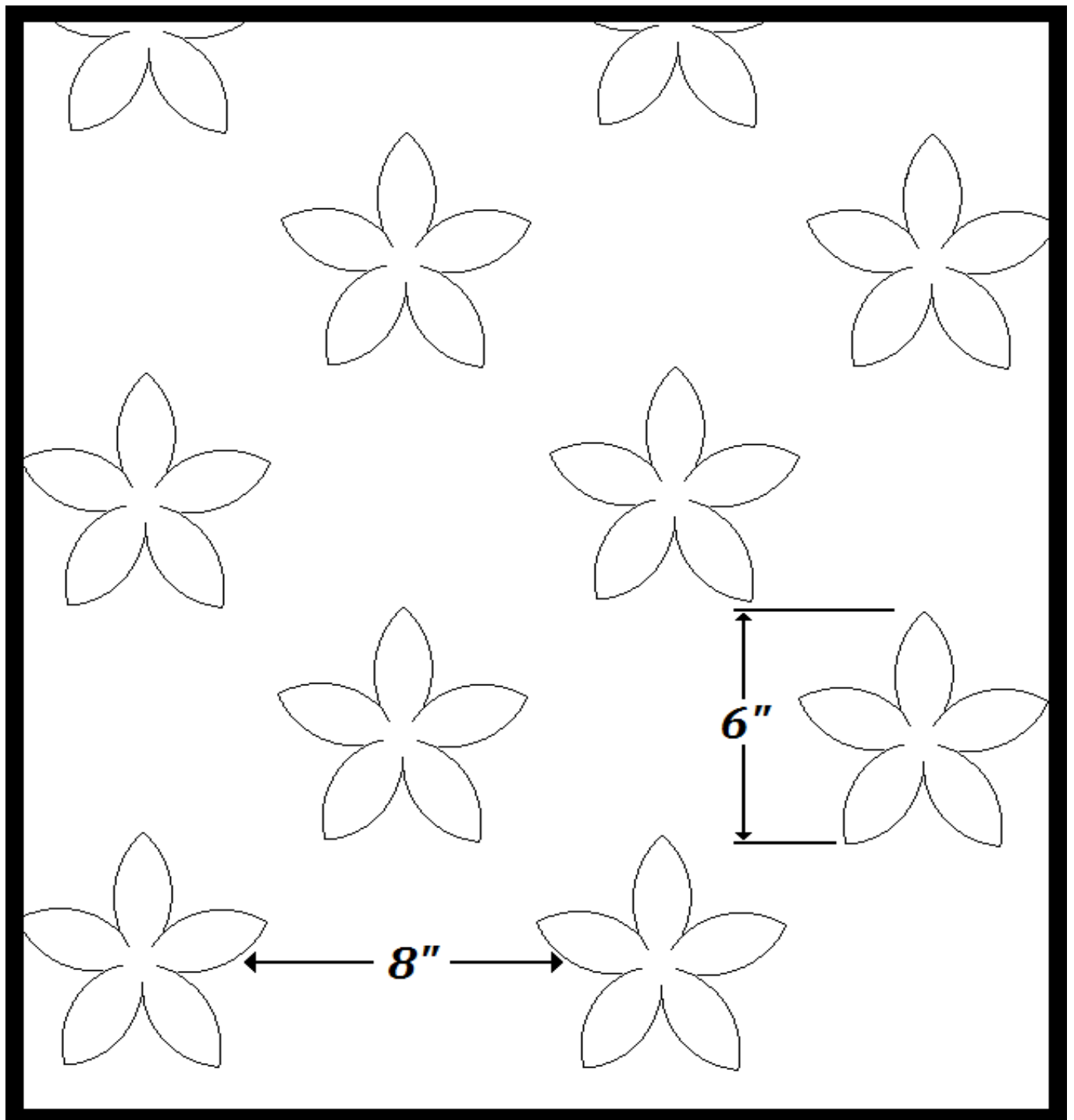
## *Tack & Jump Patterns*

\* Design has multiple configuration

~ Design has two configuration

*Design#*      ***5PETAL\****

---



# *Class III*

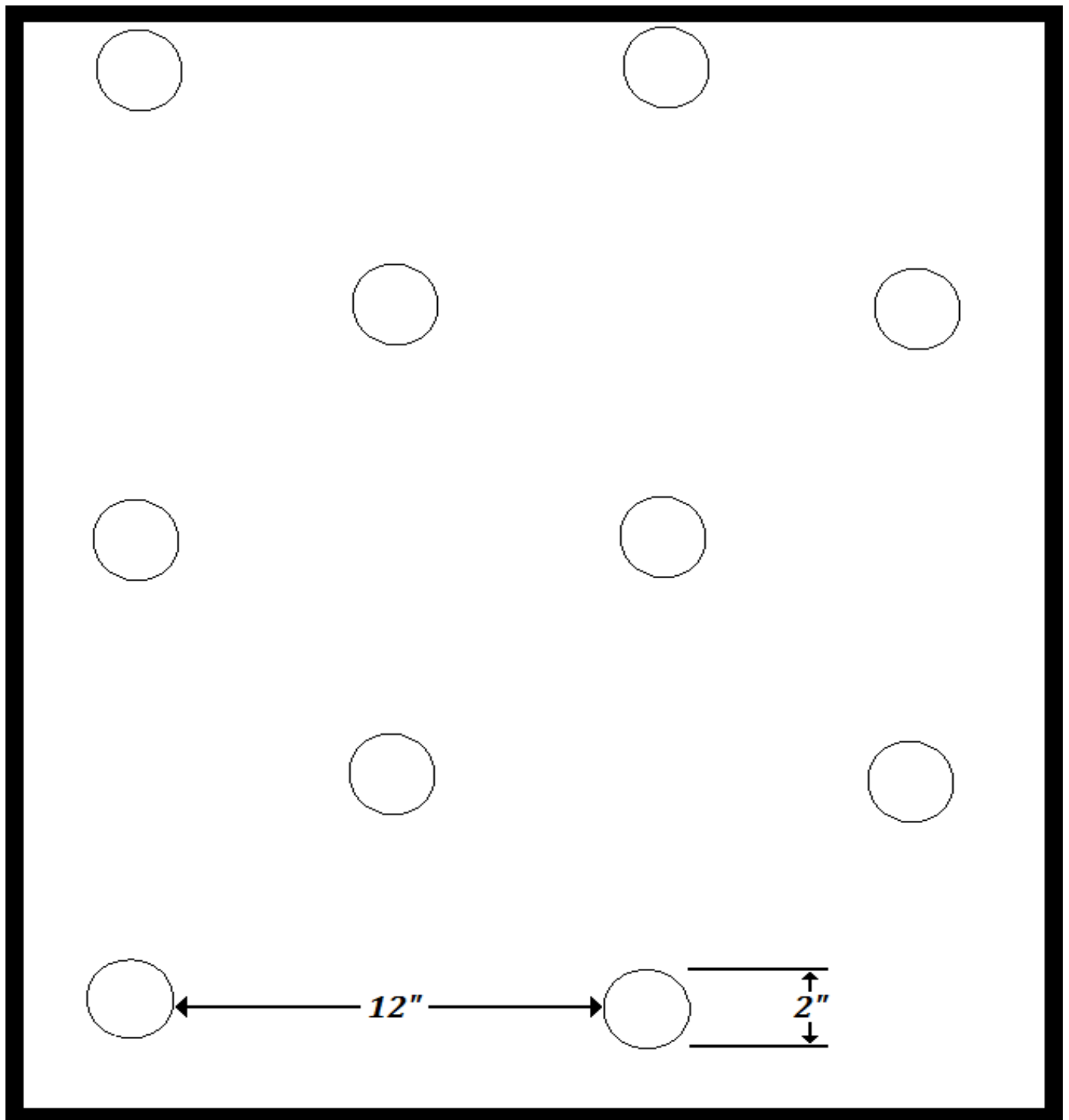
## *Tack & Jump Patterns*

\* Design has multiple configuration

~ Design has two configuration

*Design#*     ***BIG BUTTON\****

---



# *Class III*

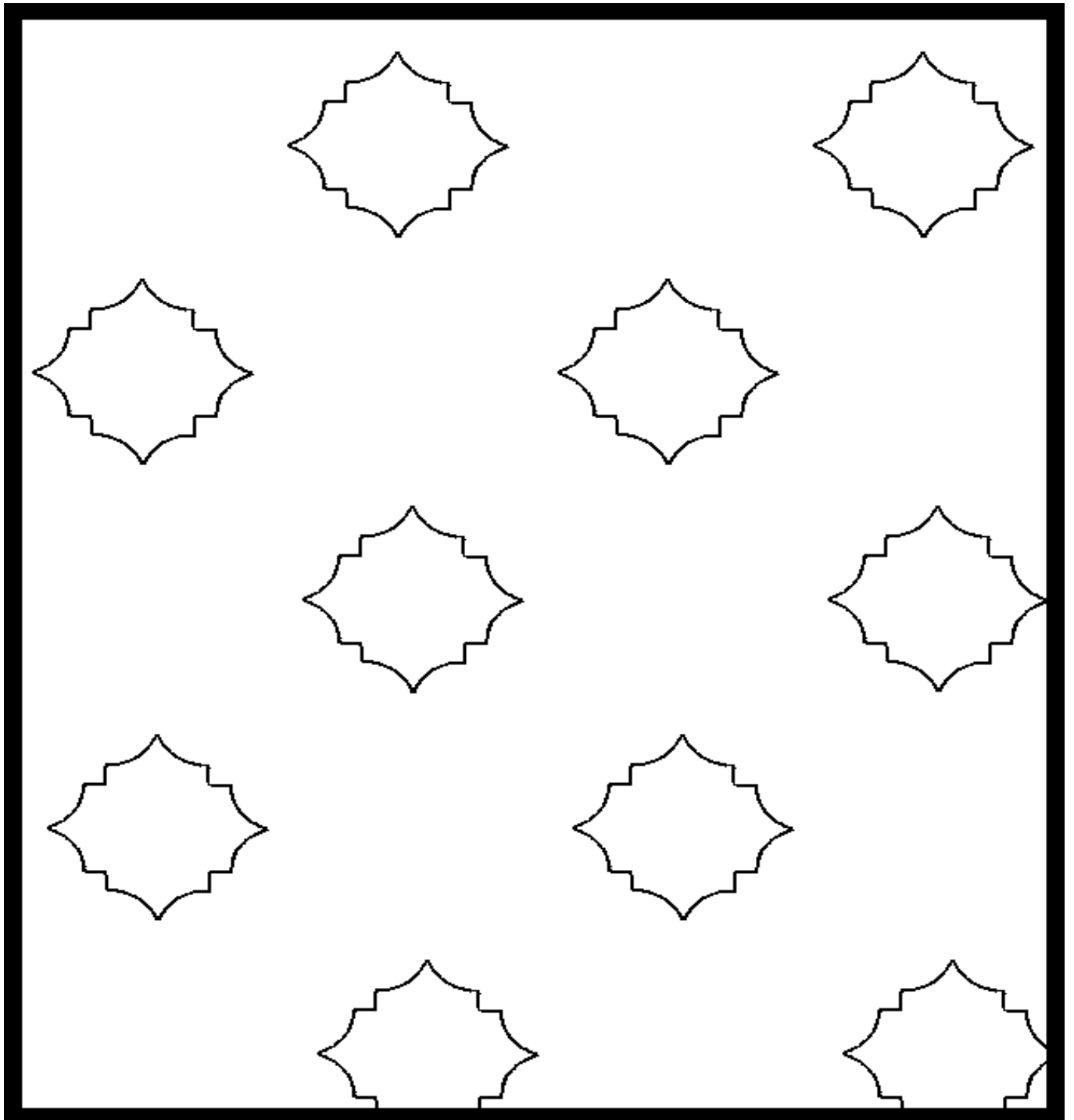
## *Tack & Jump Patterns*

\* Design has multiple configuration

~ Design has two configuration

*Design#*      ***F4STAR\****

---



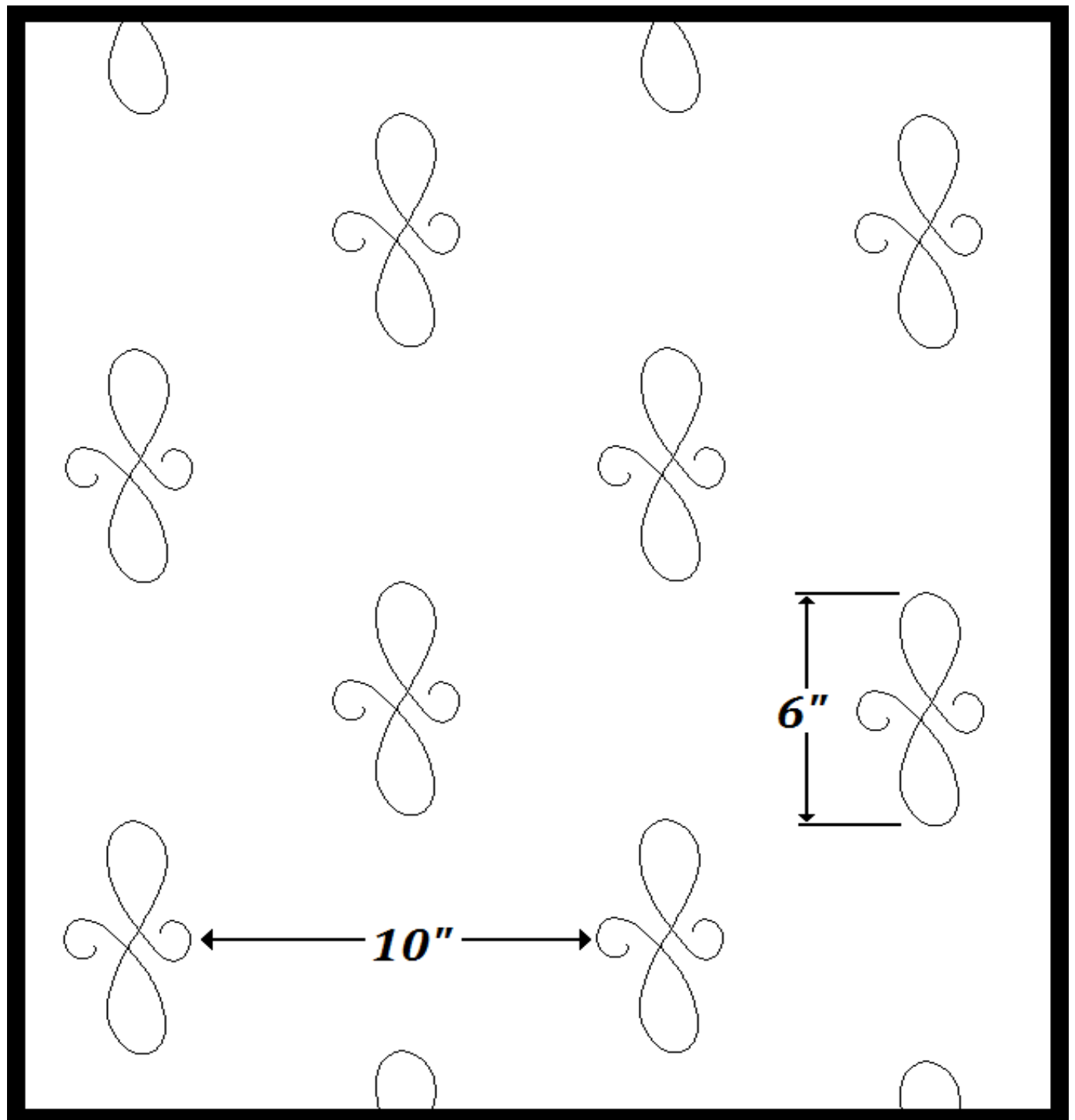
# *Class III*

## *Tack & Jump Patterns*

\* Design has multiple configuration

~ Design has two configuration

<i>Design#</i>	<i><b>MUSIC NOTE*</b></i>
----------------	---------------------------





# *Class III*

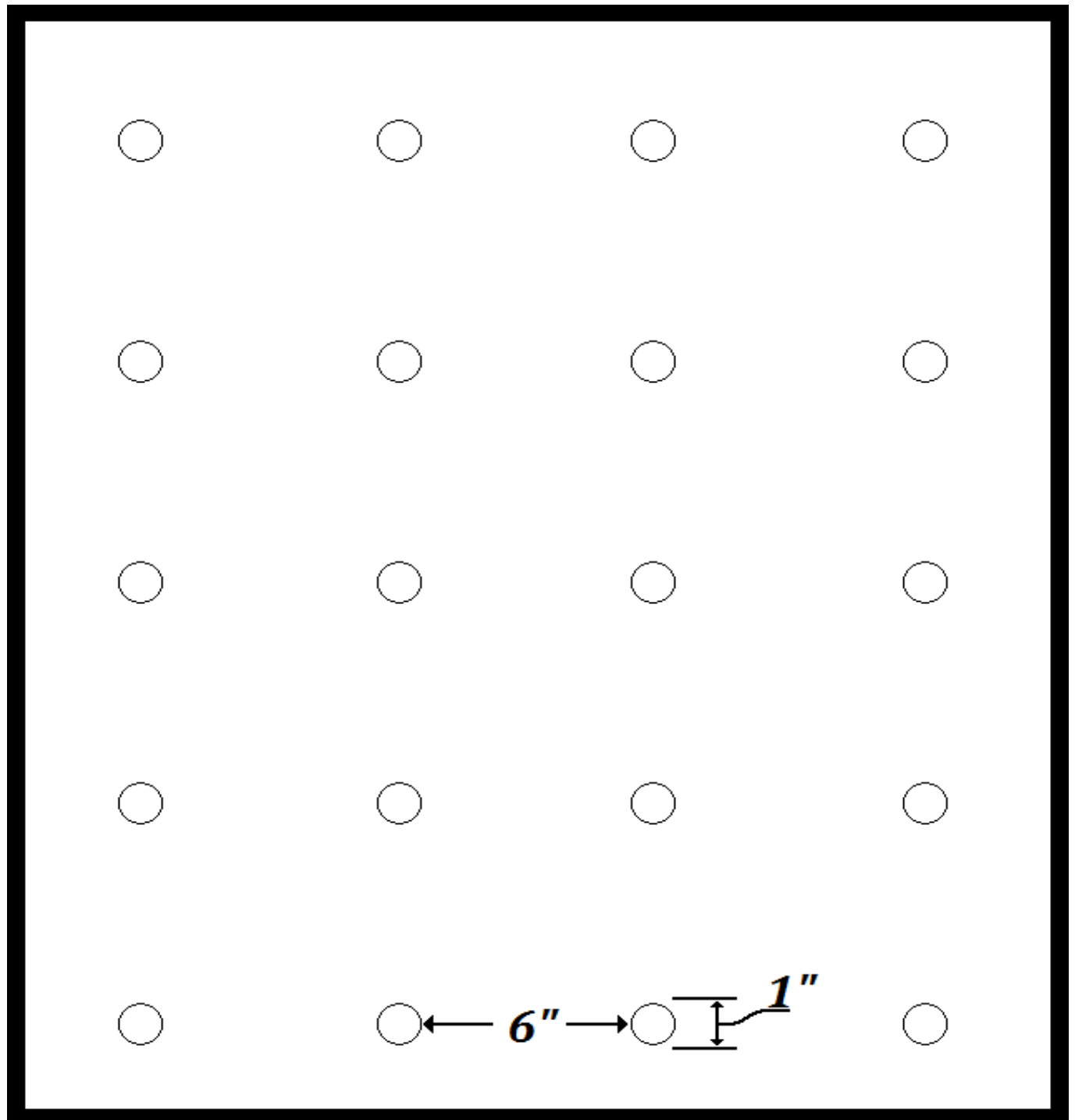
## *Tack & Jump Patterns*

\* Design has multiple configuration

~ Design has two configuration

*Design#*      ***SMALL BUTTON***

---



# *Class III*

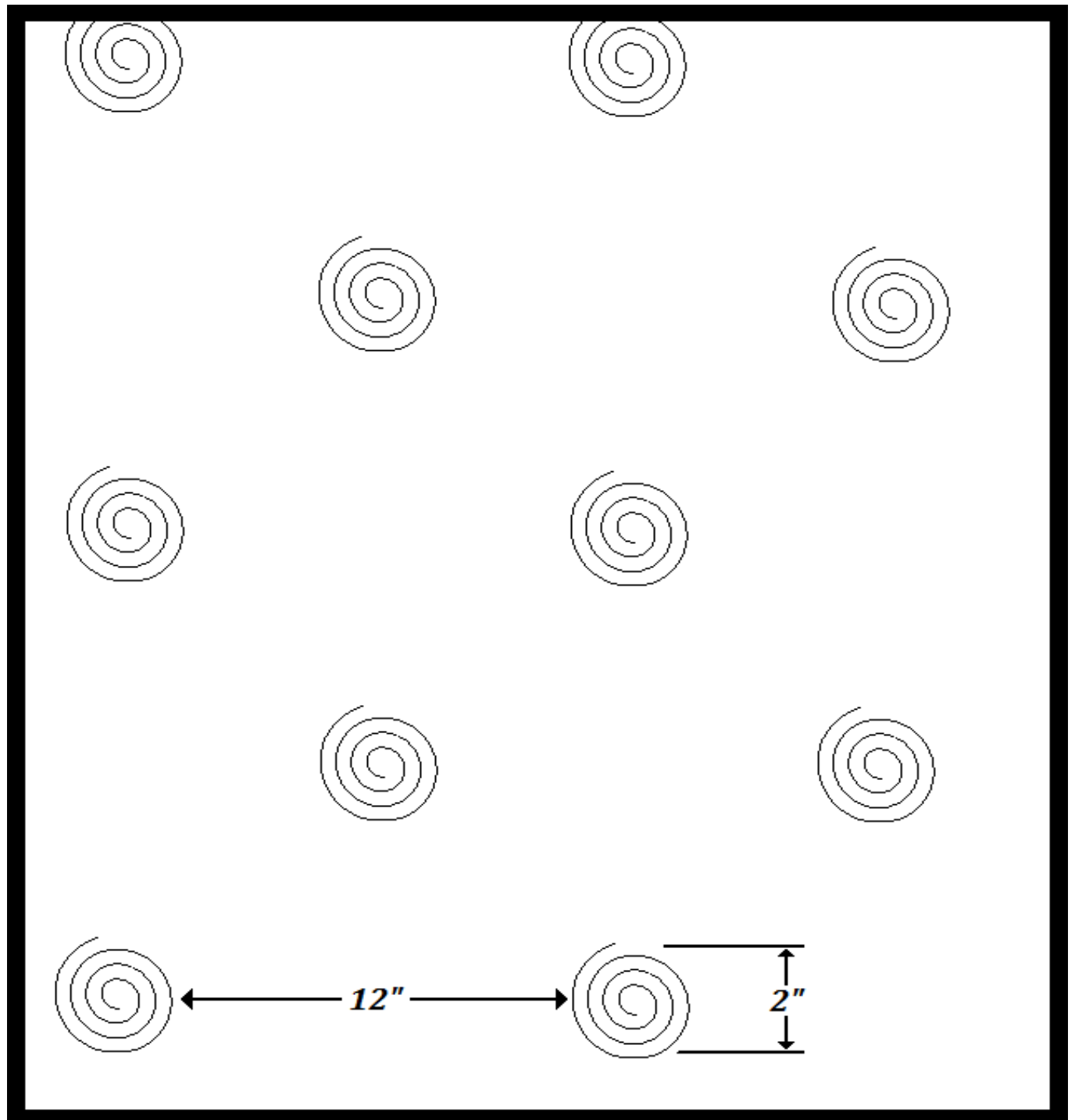
## *Tack & Jump Patterns*

\* Design has multiple configuration

~ Design has two configuration

*Design#*      ***SPRIAL\****

---



# *Class III*

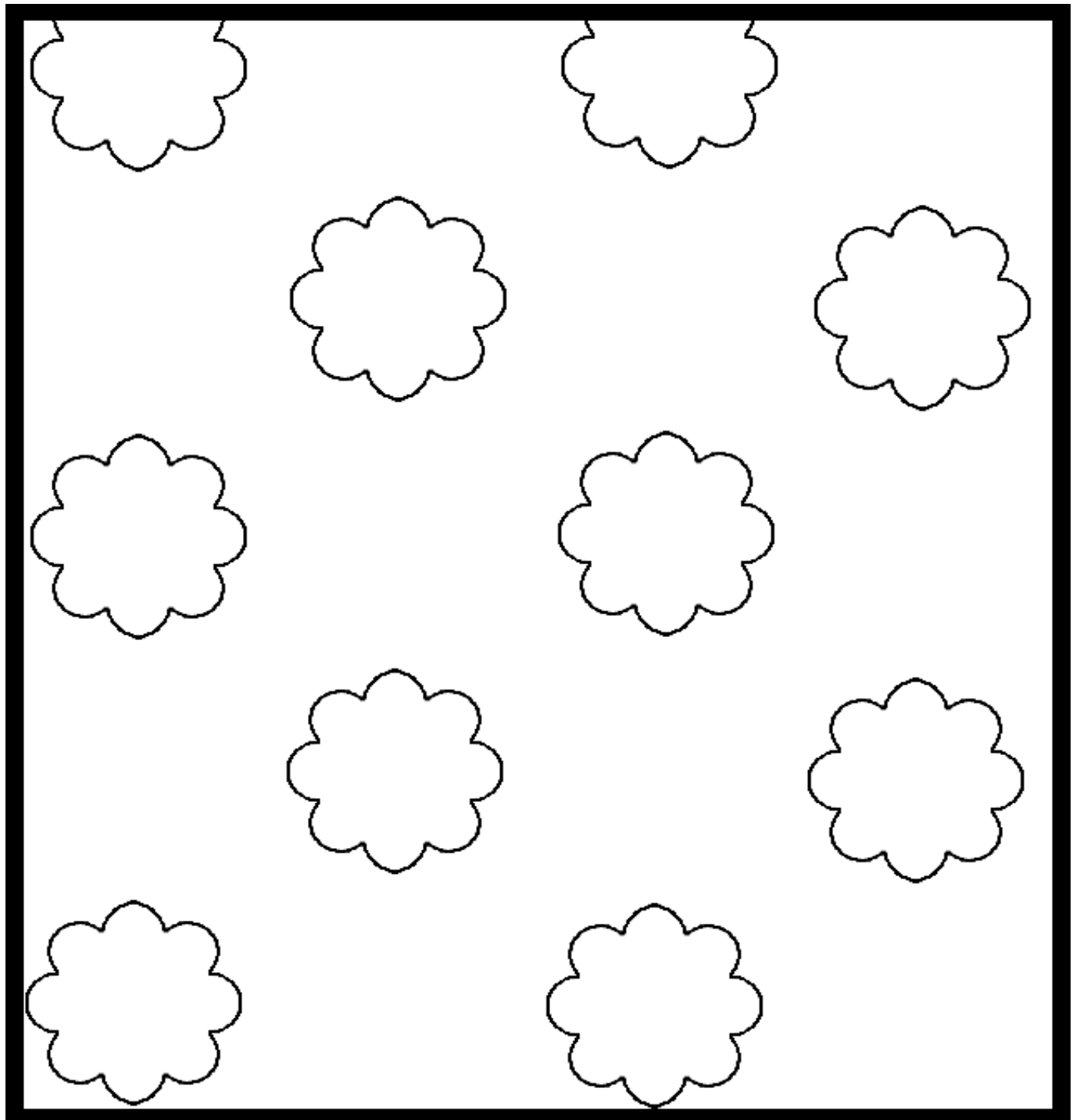
## *Tack & Jump Patterns*

\* Design has multiple configuration

~ Design has two configuration

*Design#*      ***TJCLOUD\****

---



# *Class I*

## *Standard Patterns*

\* Design has multiple configuration

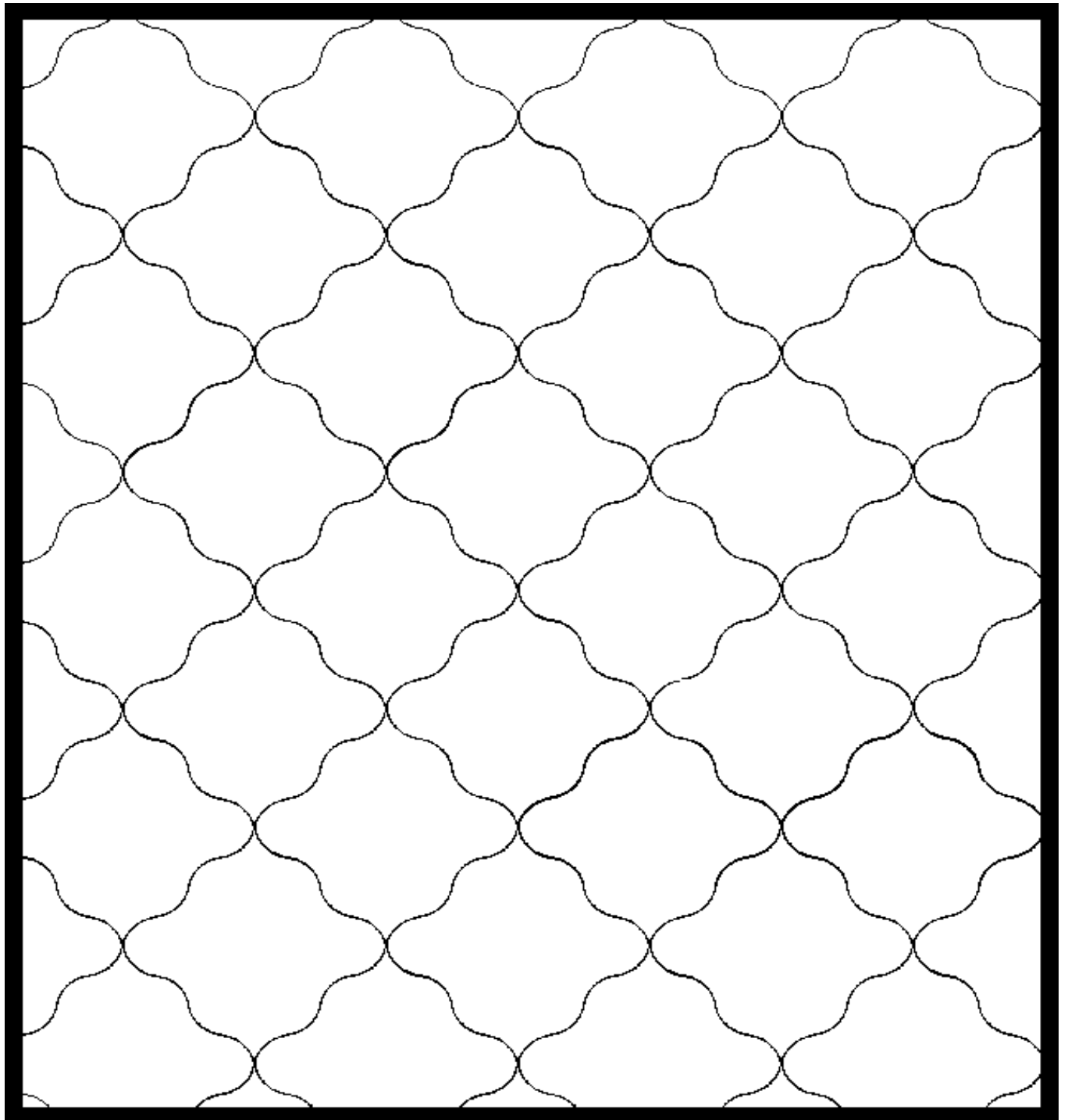
~ Design has two configuration

*Design#*

**206~**

**6" and 12"**

---



# *Class I*

## *Standard Patterns*

\* Design has multiple configuration

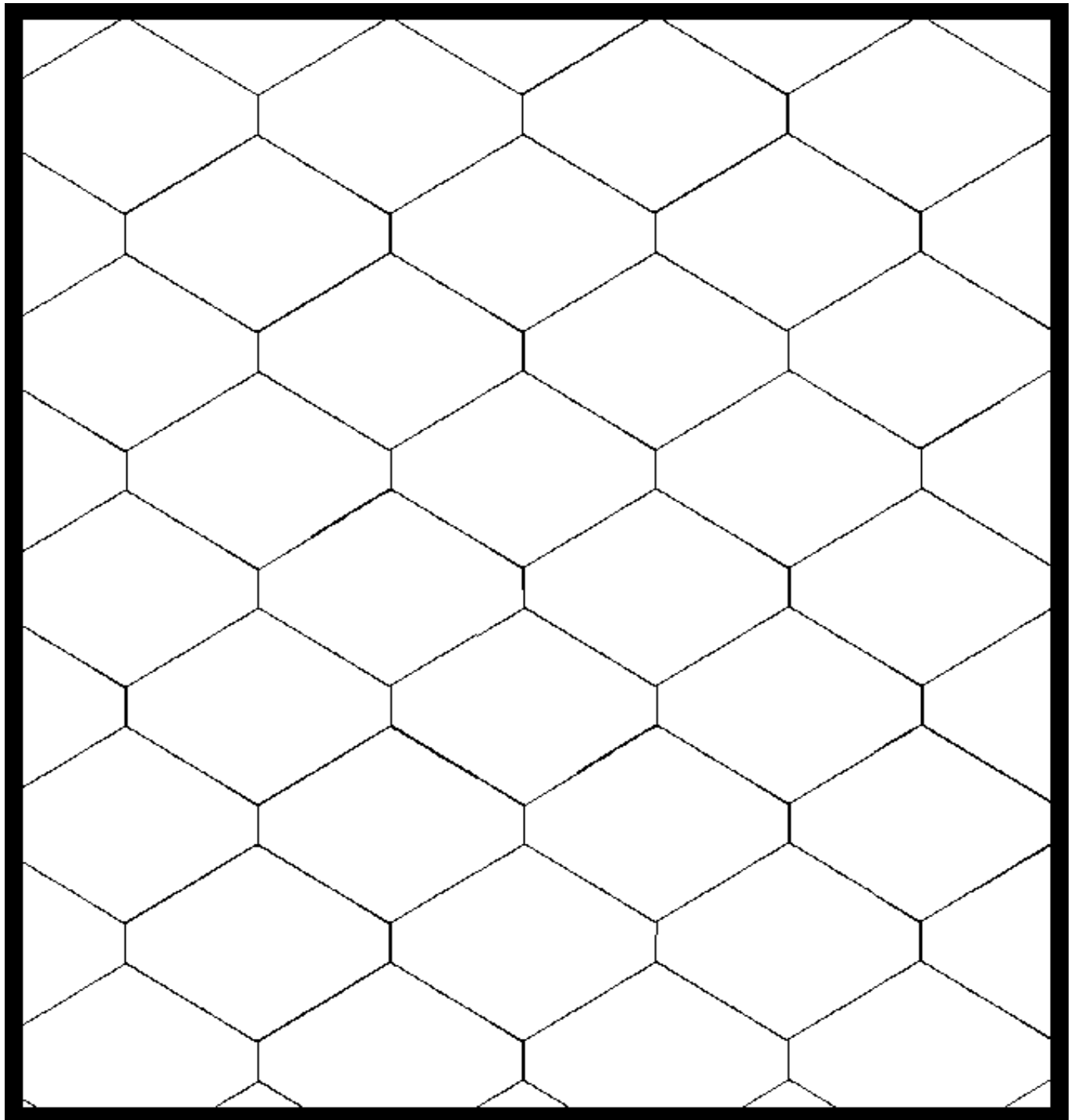
~ Design has two configuration

*Design#*

**213~**

**6" and 12"**

---



# *Class I*

## *Standard Patterns*

\* Design has multiple configuration

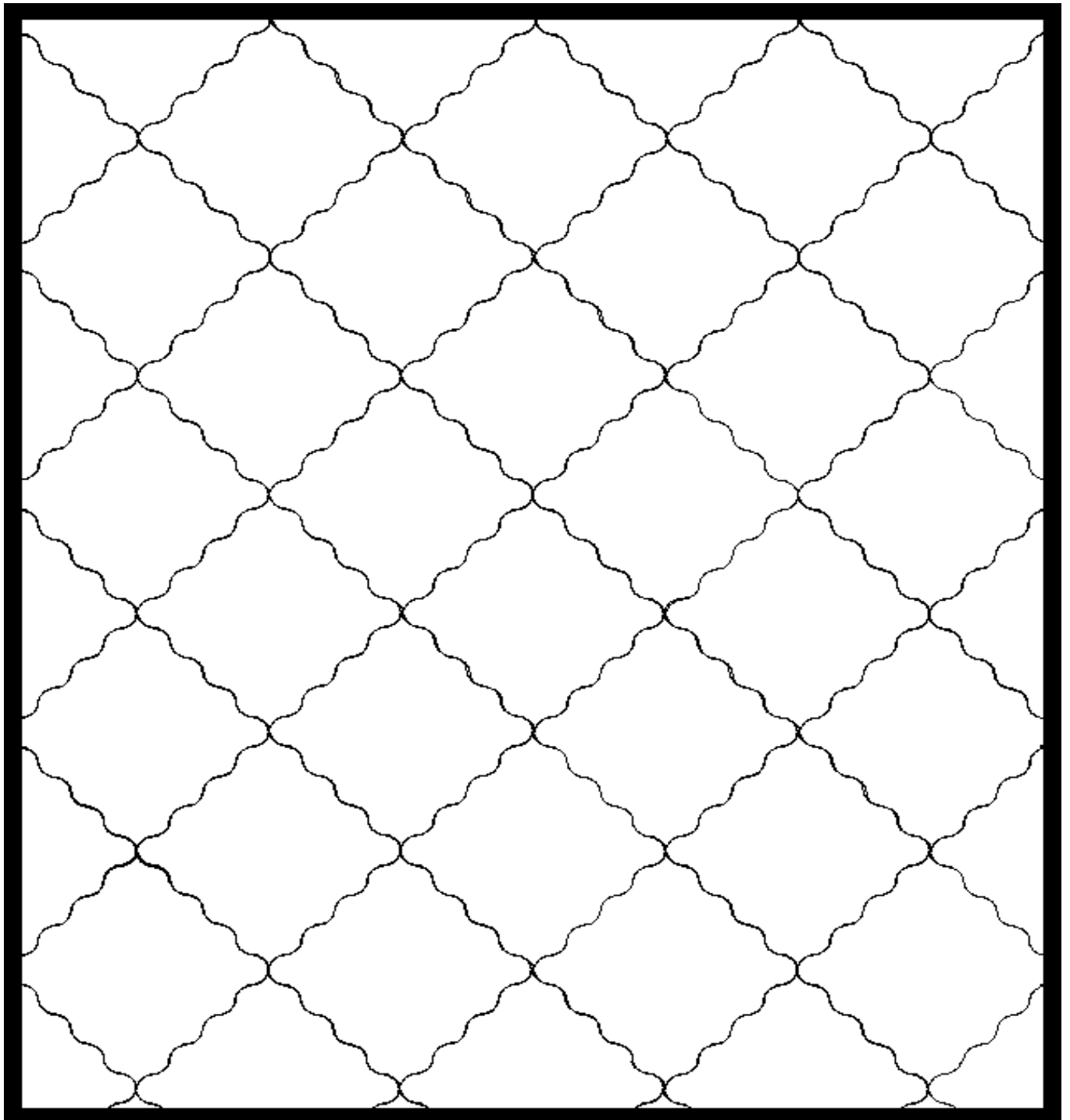
~ Design has two configuration

*Design#*

**301~**

**6" and 12"**

---



# *Class I*

## *Standard Patterns*

\* Design has multiple configuration

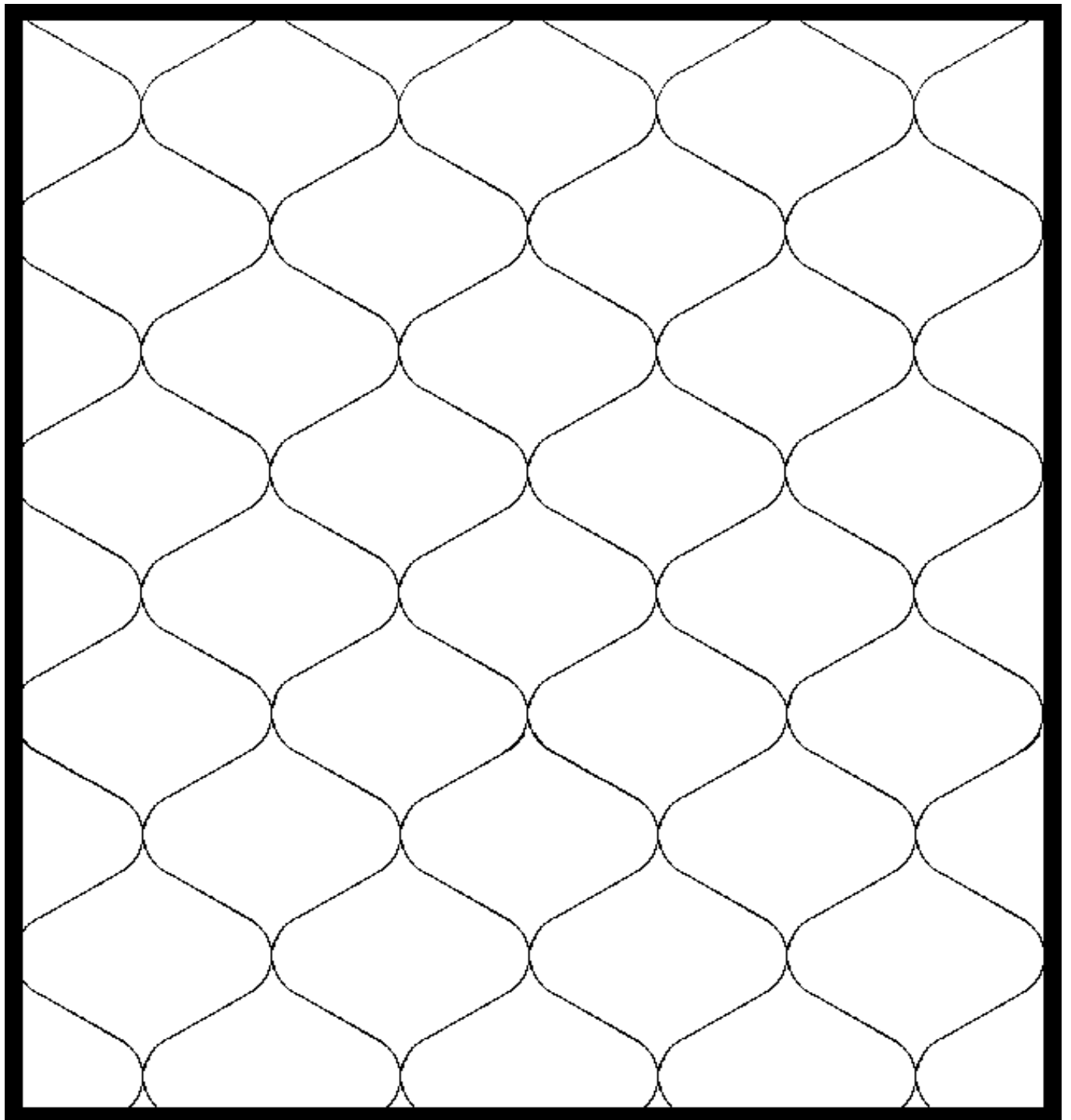
~ Design has two configuration

*Design#*

***340~***

***6" and 12"***

---



# *Class I*

## *Standard Patterns*

\* Design has multiple configuration

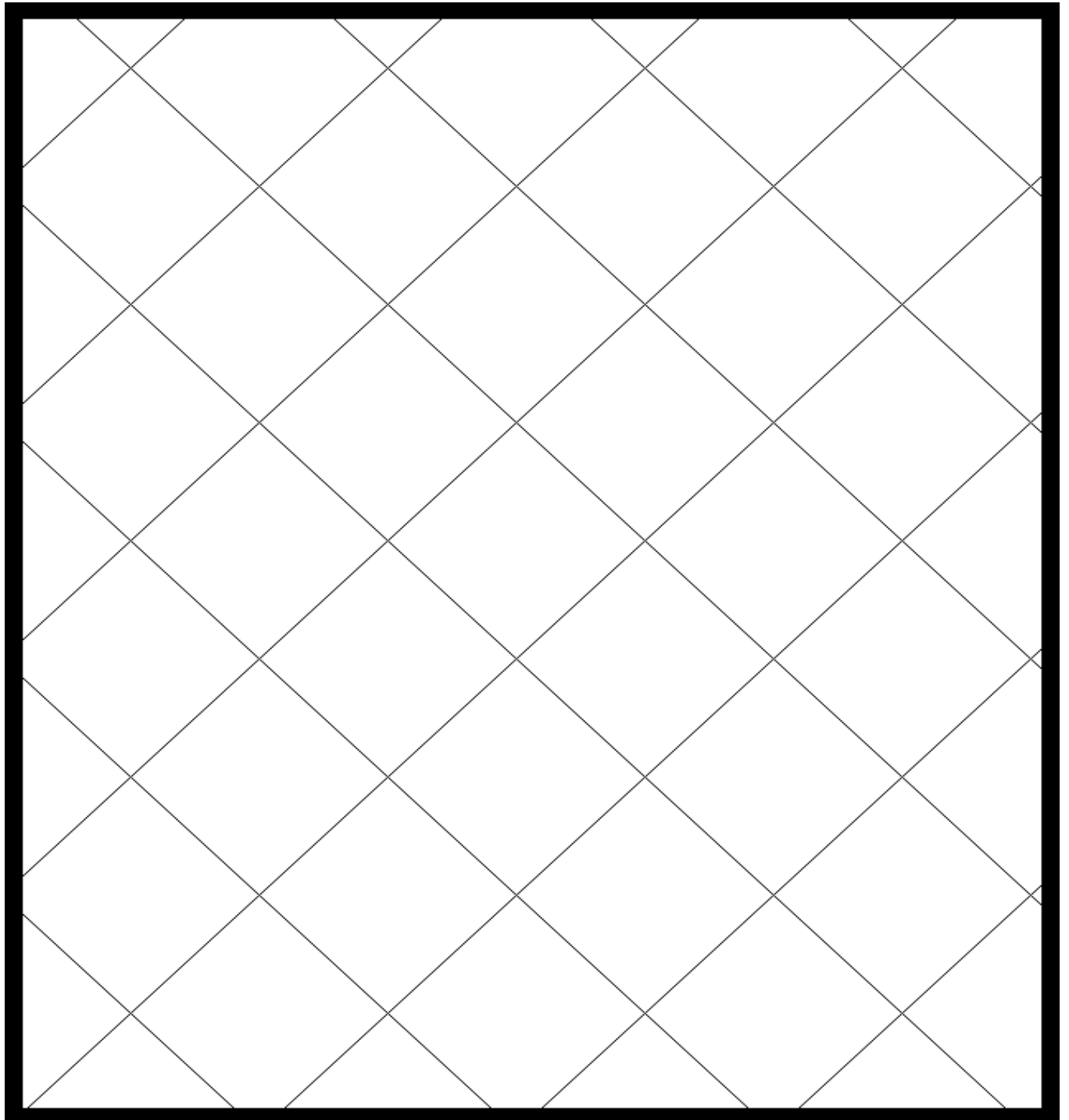
~ Design has two configuration

*Design#*

***514~***

***6" and 12"***

---





# *Class I*

## *Standard Patterns*

\* Design has multiple configuration

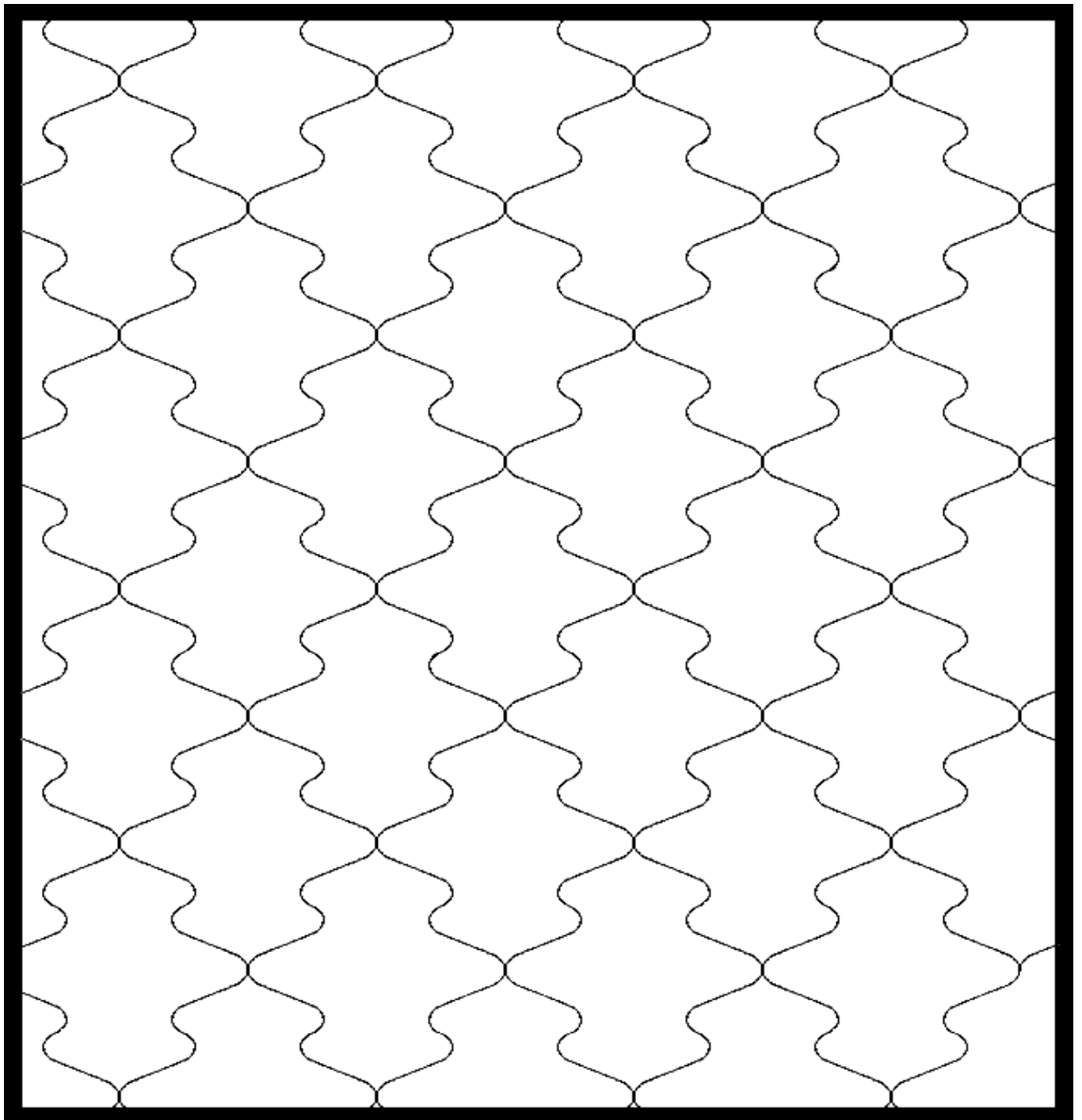
~ Design has two configuration

*Design#*

***749~***

***6" and 12"***

---



# *Class I*

## *Standard Patterns*

\* Design has multiple configuration

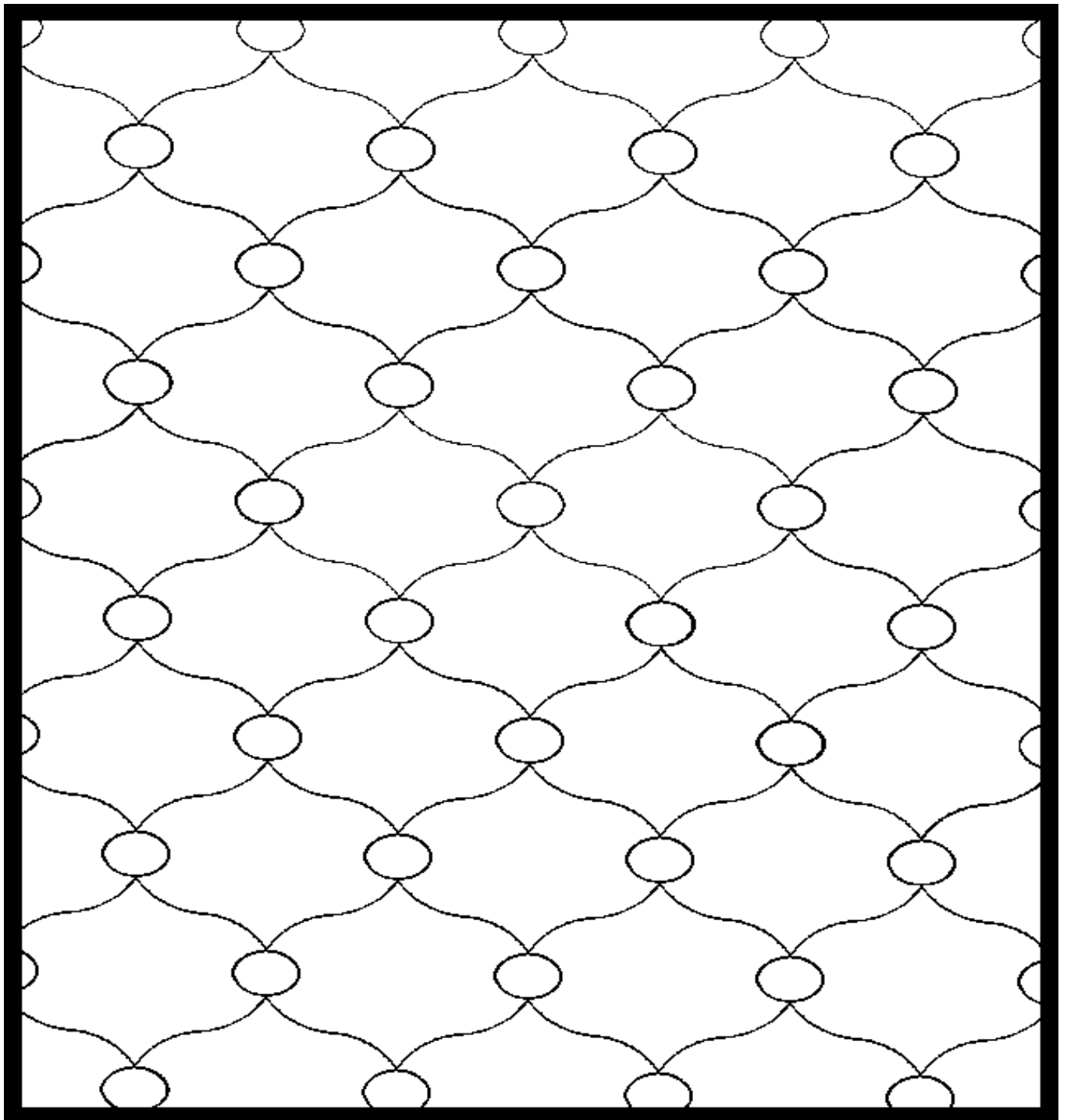
~ Design has two configuration

*Design#*

**756~**

**6" and 12"**

---



# *Class I*

## *Standard Patterns*

\* Design has multiple configuration

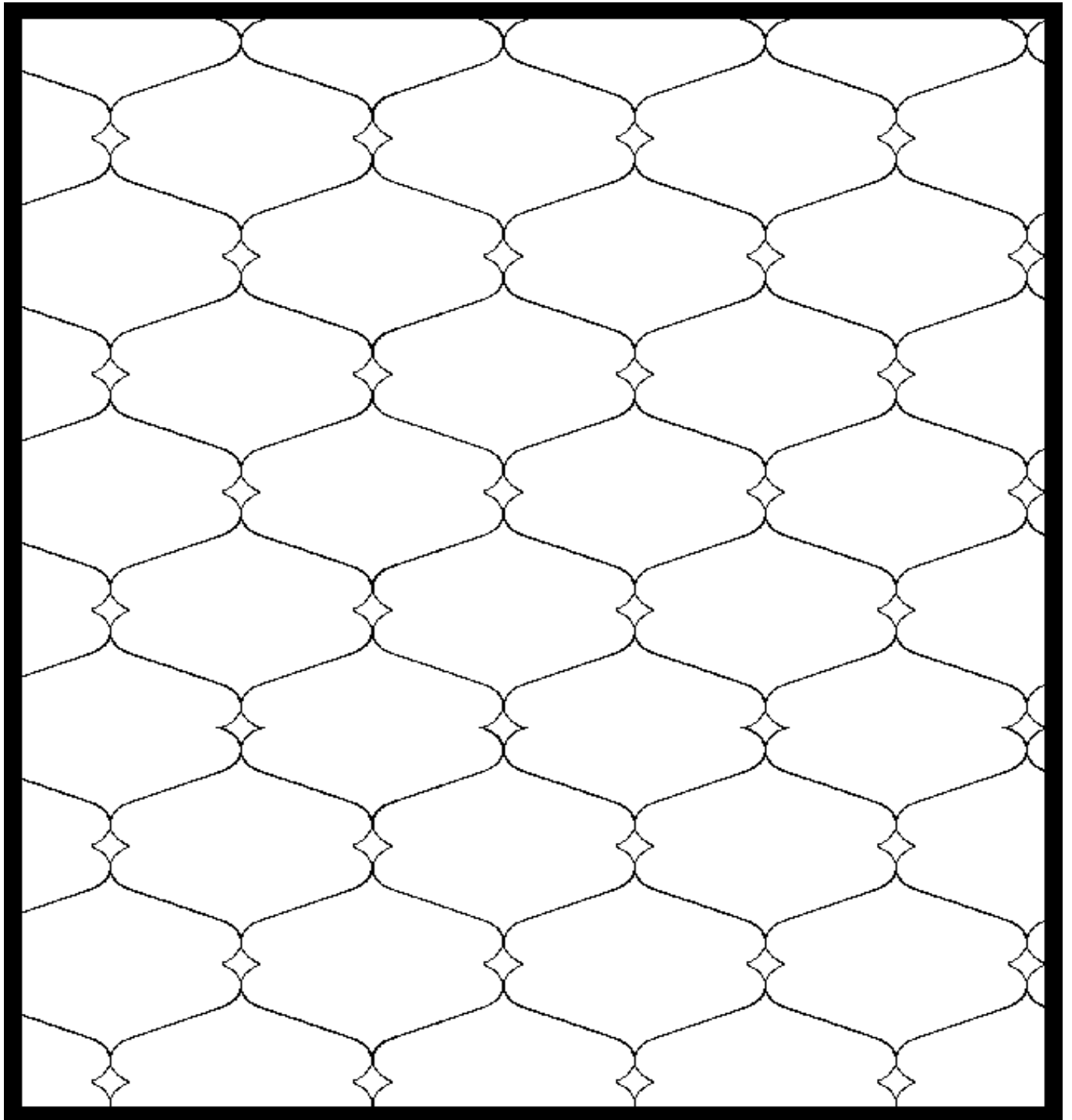
~ Design has two configuration

*Design#*

**772~**

**6" and 12"**

---



# *Class I*

## *Standard Patterns*

\* Design has multiple configuration

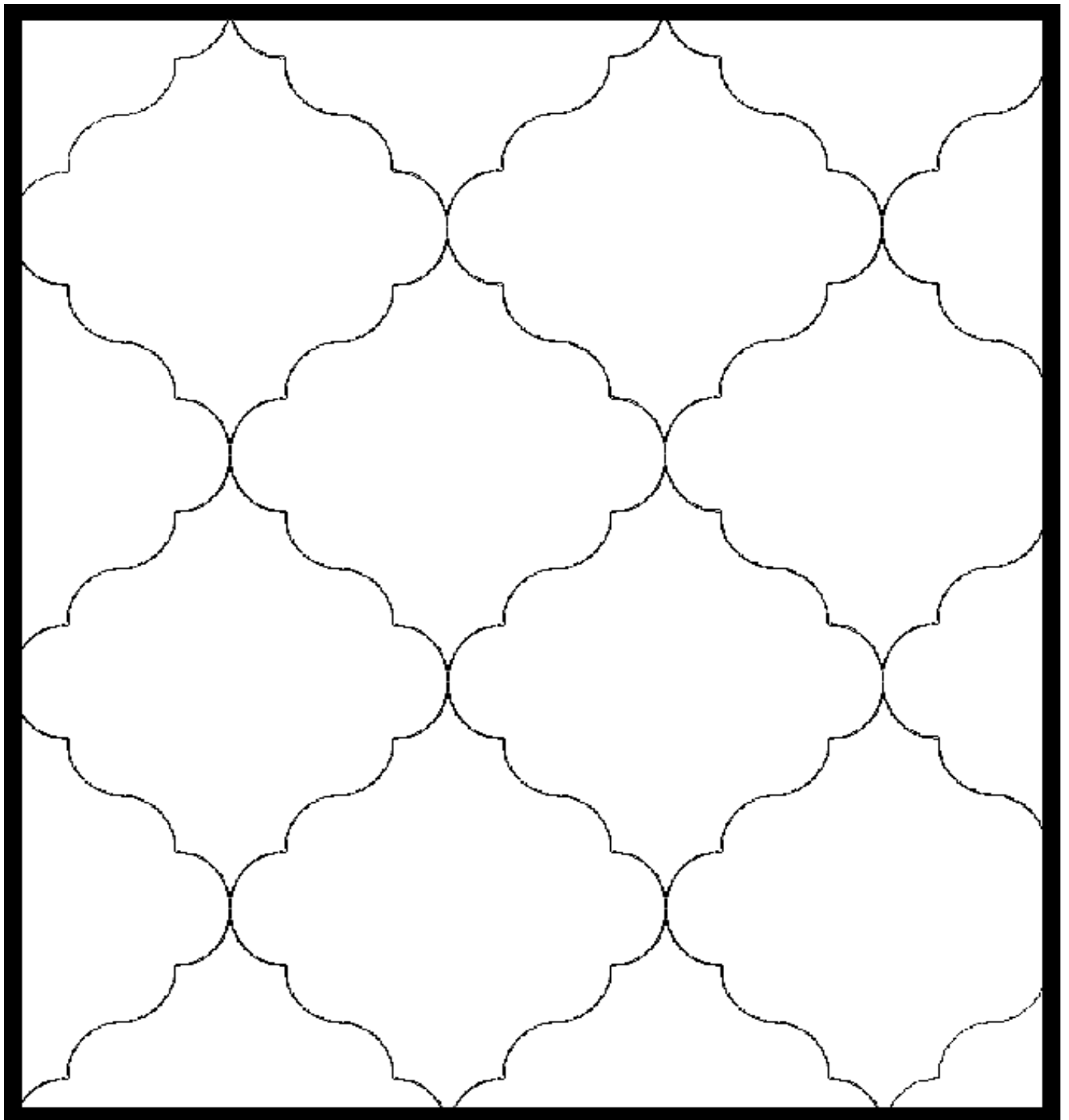
~ Design has two configuration

*Design#*

**787~**

**6" and 12"**

---



# *Class I*

## *Standard Patterns*

\* Design has multiple configuration

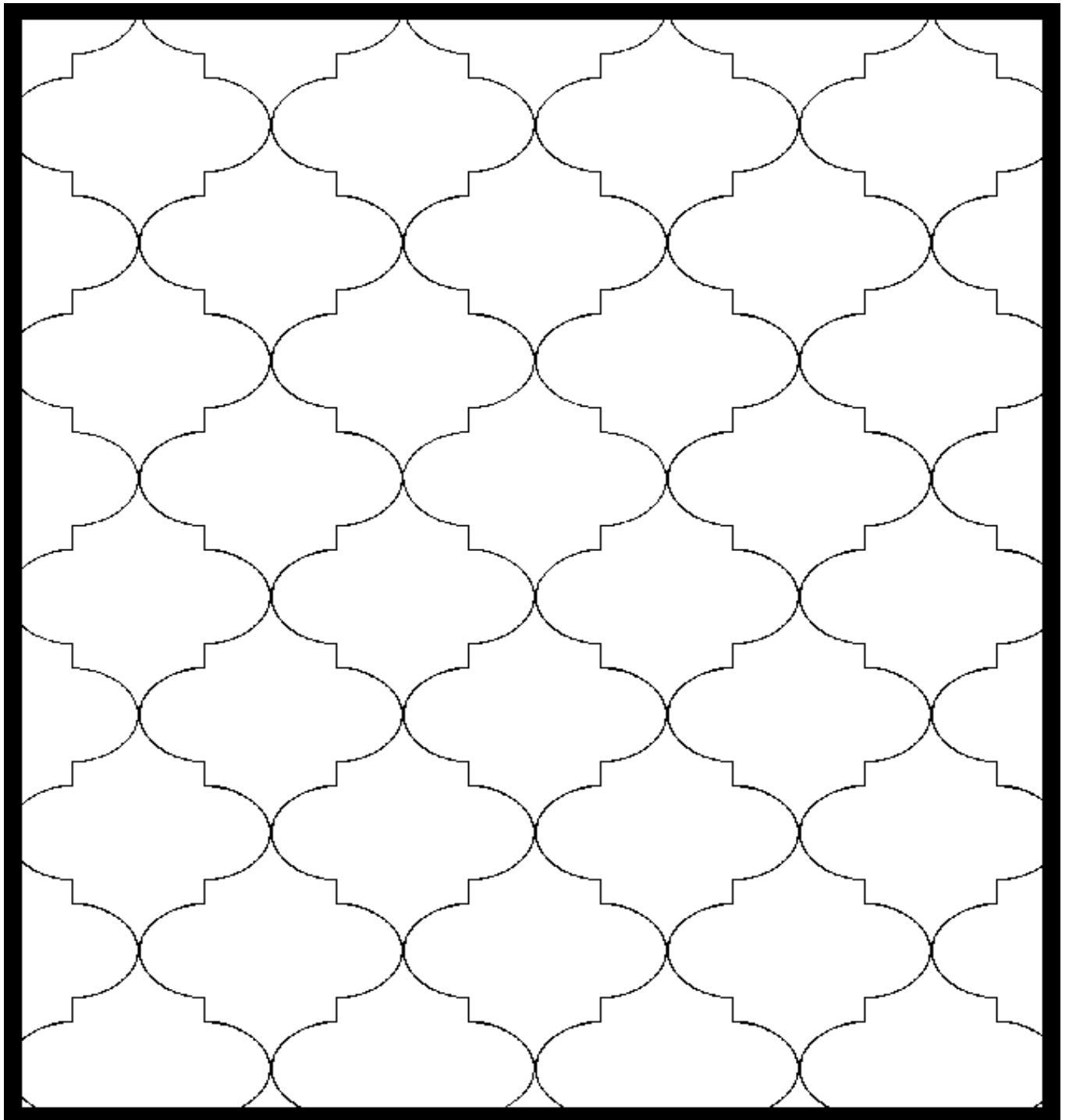
~ Design has two configuration

***Design#***

***800~***

***6" and 12"***

---



# *Class I*

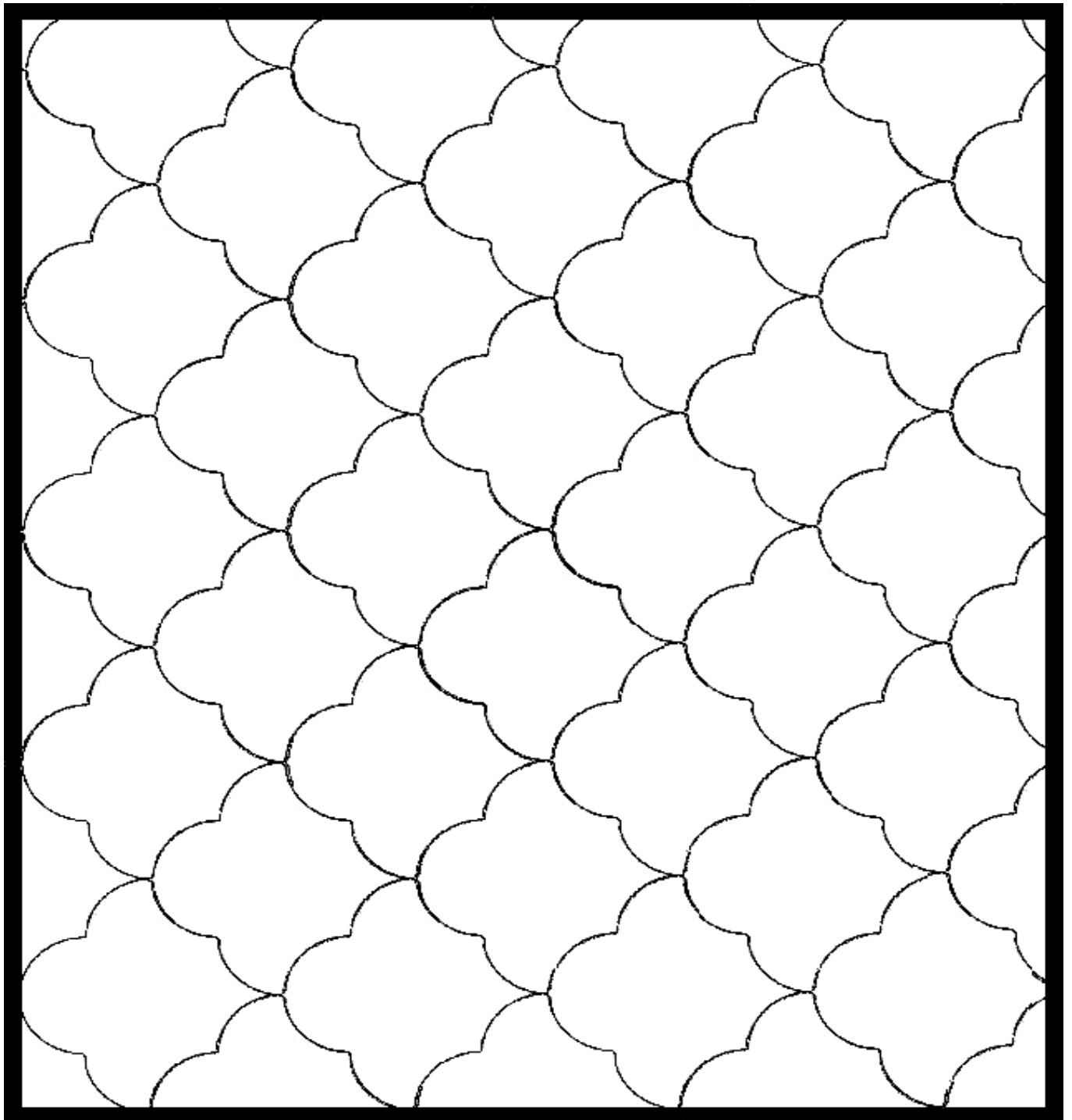
## *Standard Patterns*

\* Design has multiple configuration

~ Design has two configuration

*Design#*      ***CLOUD-RR~***      ***6" and 12"***

---



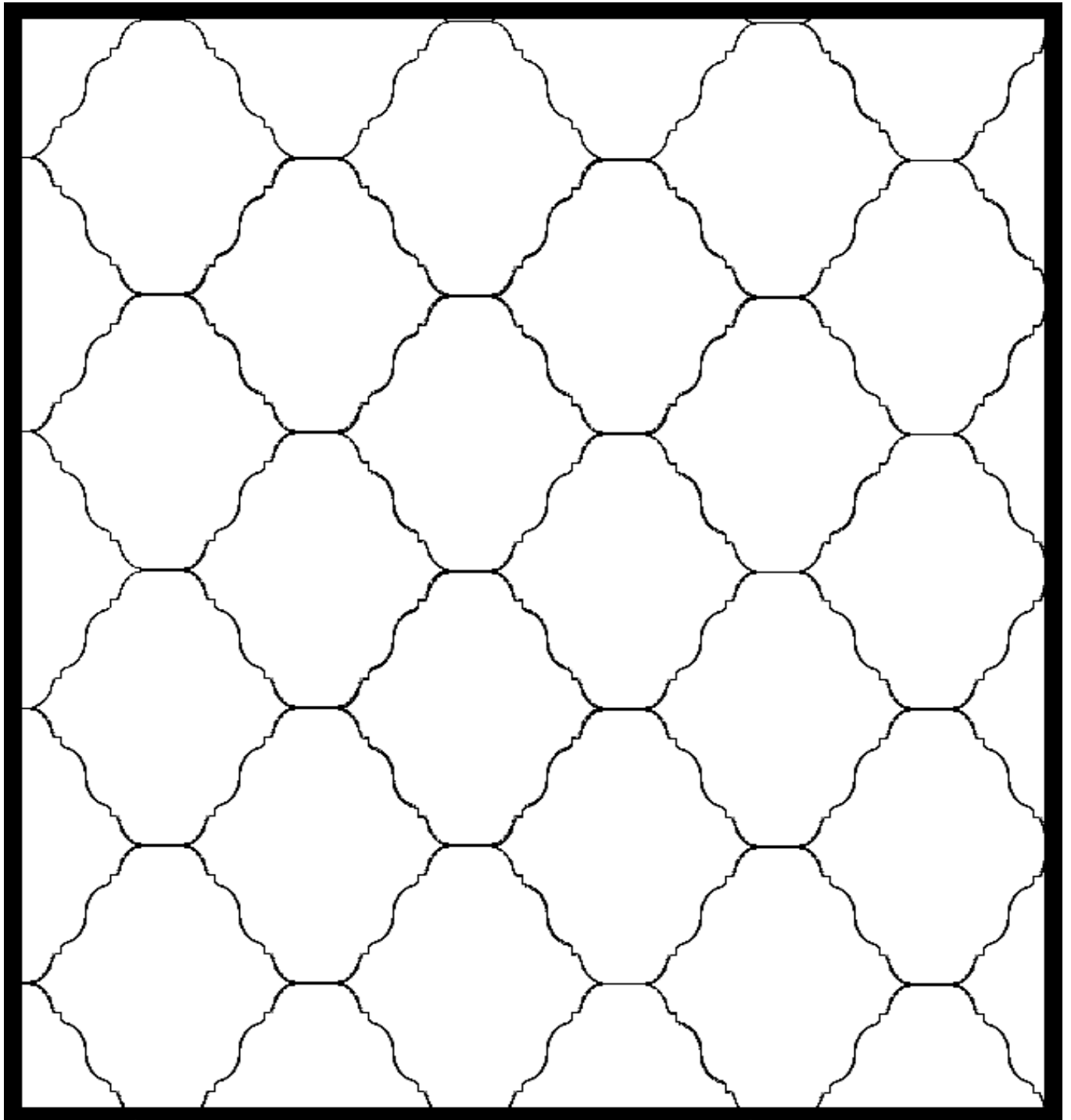
# *Class I*

## *Standard Patterns*

\* Design has multiple configuration

~ Design has two configuration

*Design#*      **GRIB11-RR~**      **6" and 12"**



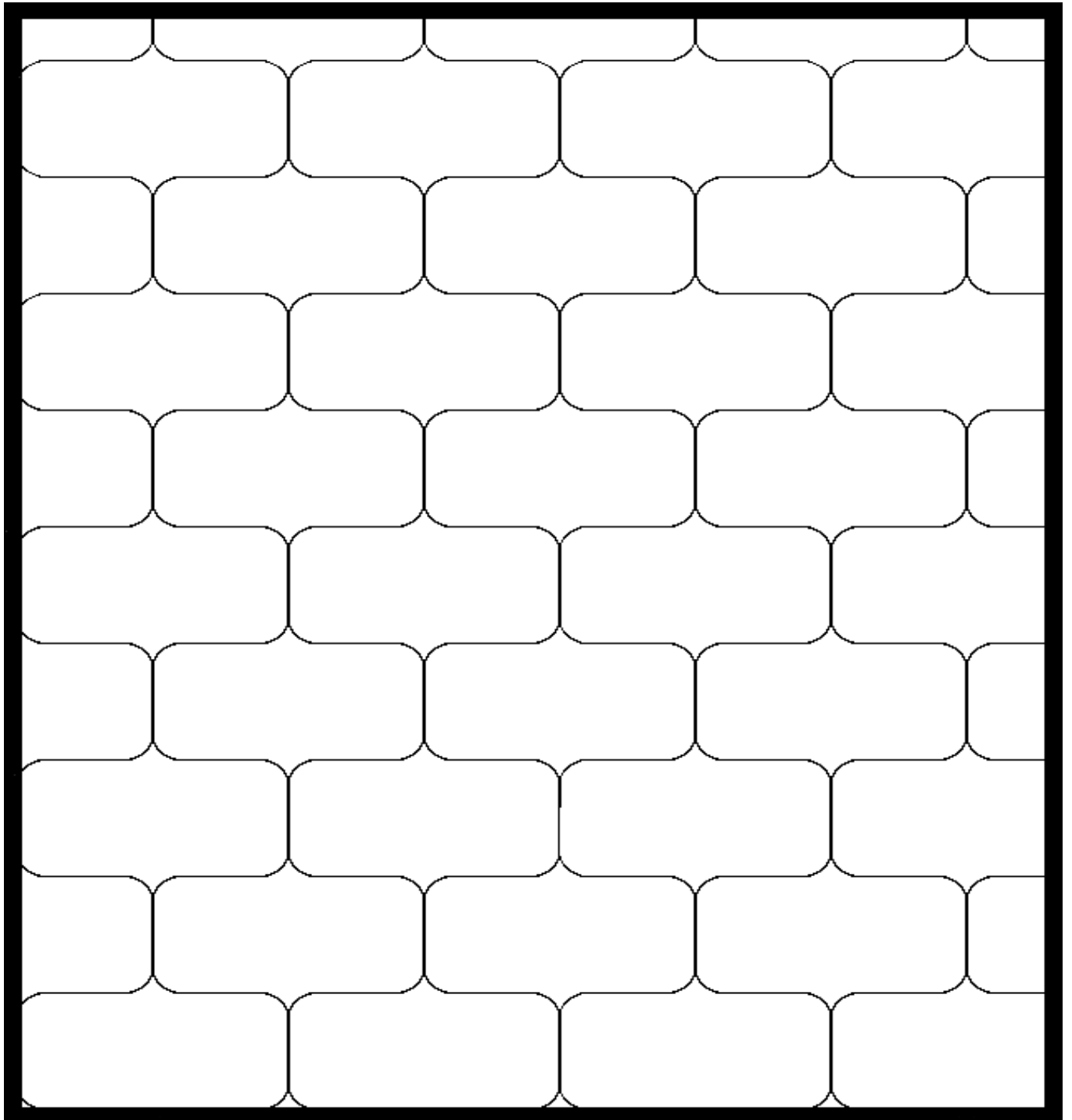
# *Class I*

## *Standard Patterns*

\* Design has multiple configuration

~ Design has two configuration

*Design#*      ***NEWBRICK~***      ***6" and 12"***





# *Class I*

## *Standard Patterns*

\* Design has multiple configuration

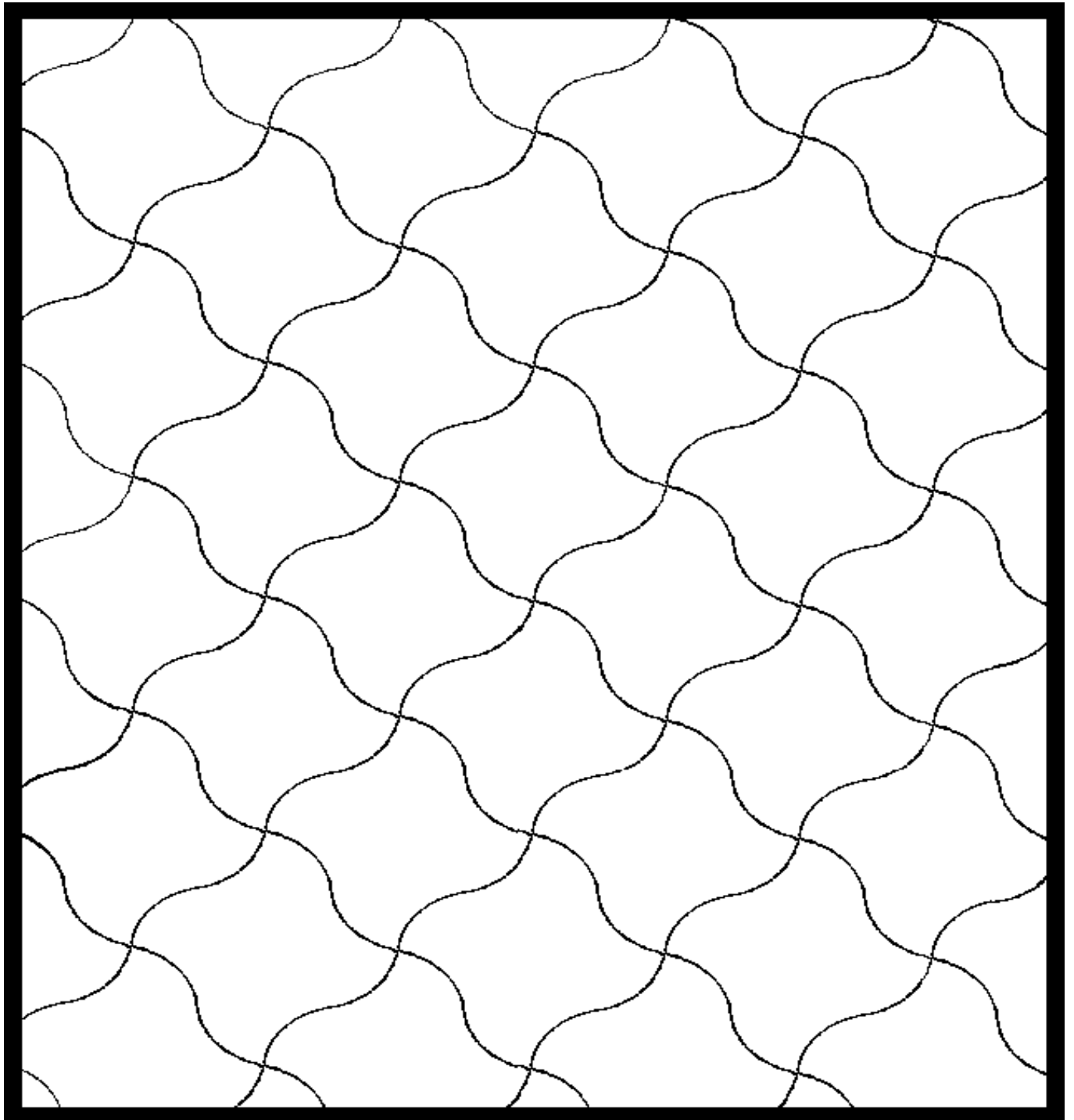
~ Design has two configuration

*Design#*

***RIBBON~***

***6" and 12"***

---



# *Class I*

## *Standard Patterns*

\* Design has multiple configuration

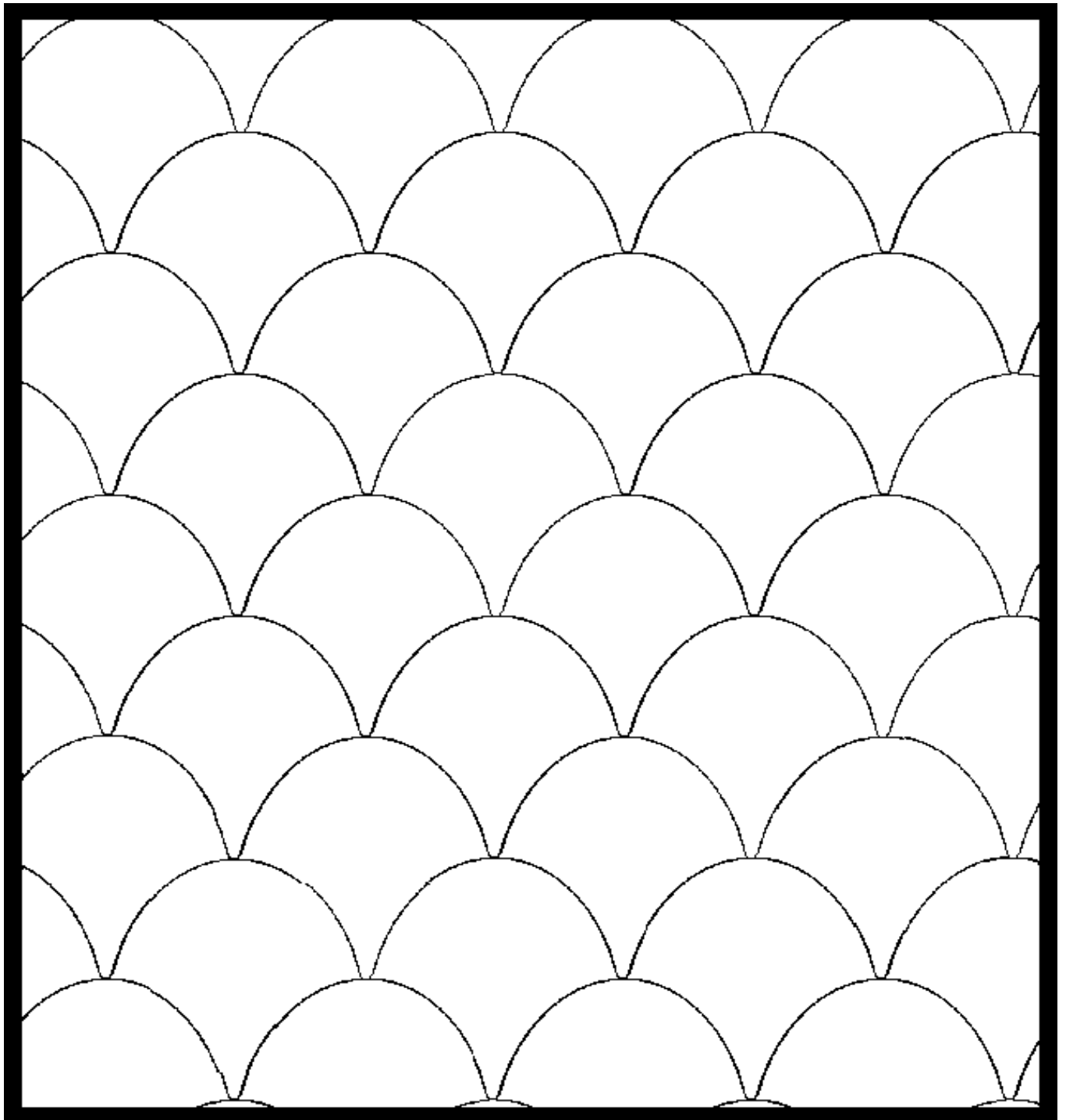
~ Design has two configuration

*Design#*

***SHELL~***

***6" and 12"***

---



# *Class I*

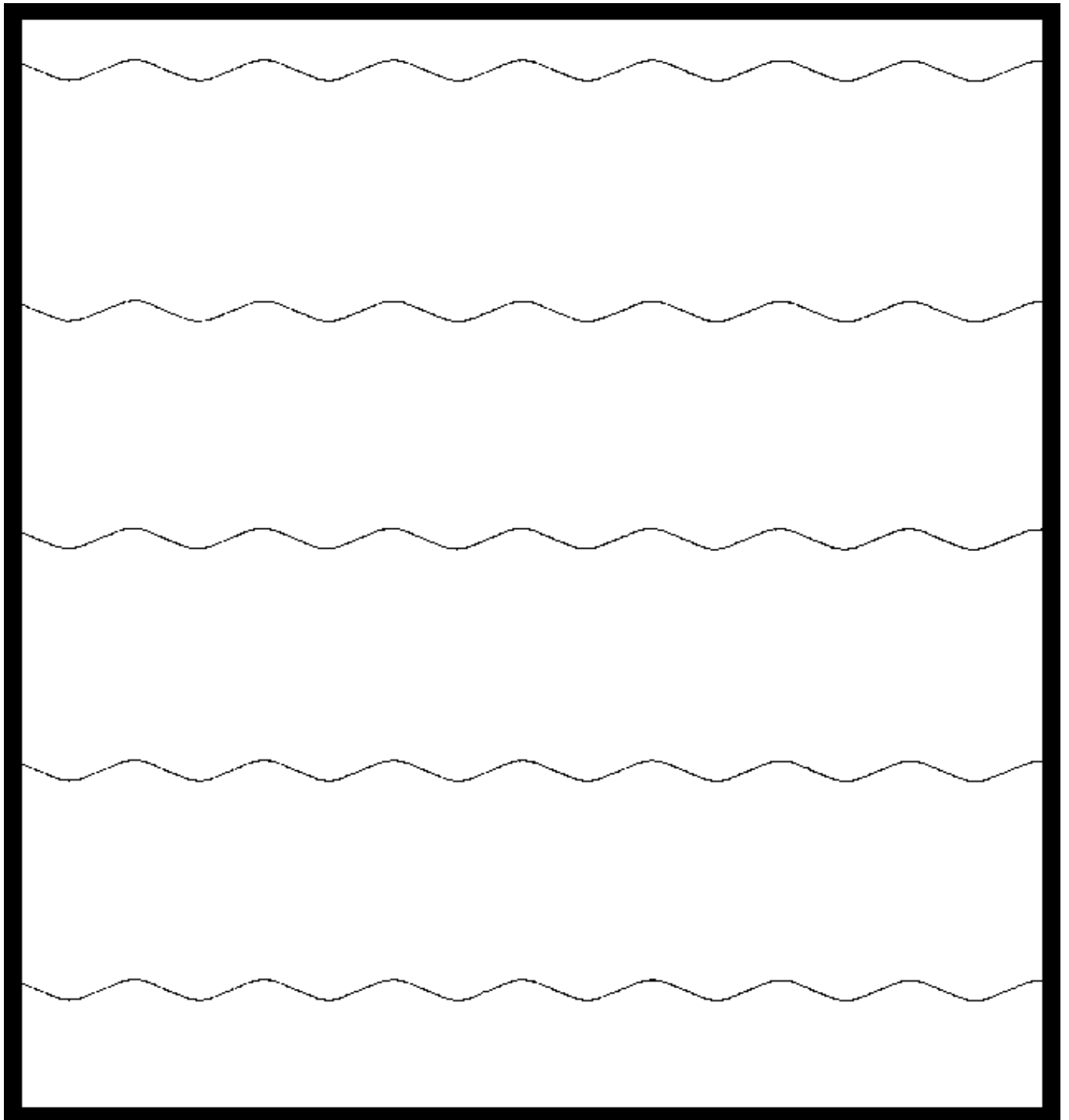
## *Standard Patterns*

\* Design has multiple configuration

~ Design has two configuration

*Design#*      **WAVE-LT\***

---



# *Class II*

## *180 Degree Patterns*

\* Design has multiple configuration

~ Design has two configuration

*Design#*

***FANCY***

***12"***

---

