



AAPL

Prequalification Document

Contents

01.

About Us

02.

Organizational chart

03.

PI Certification

04.

Our Services

05.

Trade License And
ISO Certificates

07.

Projects

08.

Major Clients

09.

Our Team



About Us

AAPL is a limited liability company incepted under the Free Zone Category and Provisions of UAE government registered with Sharjah Media City. The governing principle of AAPL is to assist and accentuate the growth and development of Industries and companies thereby facilitating further boost in economy of the region. AAPL is formed for liberalizing knowledge sharing and helping industries to avoid or overcome bottlenecks so that they deliver quality engineering products and services.

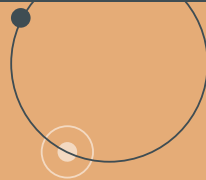
AAPL plan to provide customized software solutions to industries which will foster their services and products towards excellence. Our plan for cost effective software solutions extends from plant management, plant maintenance, product life cycle management etc. to tools like product failure assessment which are so designed to stabilize engineering system for better results.

AAPL realizes the fact that grass root problems, when un-attended tends an entire industry to issues of non-quality compliance, non-timely performance. Hence, we foresee our role as advisors and facilitators committed to engineer problems with effectiveness and perfection. We are committed to provide crystal clear, easy to understand and adaptable solutions which results in short as well as long term benefits to our clients.



Our Vision

To provide responsive, safe and trusted solutions to our clients with the highest quality, most dependable cost effective engineering, design and construction management services in infrastructural, il & Gas, Nuclear Aerospace.





Company Policy



We value our team and our reputation. We make consequent efforts to develop, engage and retain the best professionals in engineering & management with adequate expertise because this is what keeps us moving. We put the highest ethical standards always in priority of all we do. We are humble and act with relevant moral and intellectual integrity, treat everyone with outmost privilege and respect and embrace diversity. We value our offerings made to our colleagues and clients and is concerned on their progress. Our passion to prepare and execute transformative engineering solutions for various industries had led to our growth since inception. We understand the emerging needs of our customer and delight them with world class engineering solutions. We form a long-lasting relationship with everyone we are associating with.



Philosophy And Approach

At AAPL it is our goal to provide quality professional engineering design services by combining experience, knowledge, and hard work, with a strong desire to exceed client expectations. To achieve this goal, we choose to employ qualified staff with exceptional level of quality expertise. We manage our services effectively; follow an efficient design and quality control process; and are proactive and responsive in our approach. We manage our services effectively to develop close business relationships with our clients. This includes coupling a specific design team with each client, so they are well acquainted with the staff continually working on their projects. We do this because we fully value our client's needs and expectations. Our approach provides clients with an efficient design experience, which is essential for success in today's fast-paced market. AAPL's design team structure offers clients a single point of contact, which provides for a highly efficient and organized design experience. Every team is comprised of a project manager and several senior level engineers responsible for overseeing the work of their respective discipline. The team is rounded-out by talented project engineers, designers and CAD operators responsible for quality deliverables. Our approach promotes defined communication channels thereby effectively sharing the required information within all team members. We understand that effective communication is also a key factor in every successful project.



Industry Areas/Sectors

AAPL's engineering services due to its dedicated effort and innovative approach has achieved to serve in the wide spectrum of industries such as,

- Oil & Gas (Onshore and Offshore)
- Nuclear
- Rotating equipment manufacturing
- General engineering and Manufacturing
- Desalination & Industrial
- Infrastructure and MEP
- Aerospace & Automotive

Further information can be found at our corporate website:
www.aaplconsultants.com



Quality Assurance – Credential/Membership & Quality Policy

AAPL being a Consulting Engineering Company in several engineering disciplines particularly in process equipment engineering with a commitment to delivering the highest standards of quality, safety and responsiveness in process equipment engineering and services provided to customers.

AAPL Policy is communicated to customers, employees, vendors and partners striving to meet all expectations. AAPL team actively promotes this policy across all levels of Company employees and encourages them to embrace quality as their personal commitment. .

AAPL team shall consistently strive to improve Company quality through learning, sharing, benchmarking, innovation and participation in continuous improvement programs. AAPL Quality Policy shall provide the framework for driving quality programs to inspire a quality culture of excellence, innovation and continuous improvement. We shall establish and maintain appropriate controls and conduct periodic reviews to meet our quality targets.



AAPL Service Spectrum

AAPL offers through a multidisciplinary approach a full spectrum of design capabilities and enables efficient collaboration through the design community to encourage innovation across the extended enterprise. We focus on the collaborative definition of a product across its different views from requirements, to conception, to production up to operation.

.....



The top section of the image features a dark blue background with several abstract geometric elements. On the left, there is a large orange circle with a grid of small white dots inside. To its right is a white hexagon outline. Further right is a horizontal row of small white dots. On the far right, there are white lines forming a large triangle and a smaller hexagon, with a small orange circle and a white circle nearby. A solid orange circle is also present on the left side of the top section.

INFRASTRUCTURE

Service Spectrum

Piping Engineering:

CAESAR 2

Aft Futham

Office and Management Platform:

MS Project

MS Office

Online In-house Management System

CAD Platform :

AutoCAD (2013)

Creo parametric-(Pro E)-(ENG3607-F)

CATIA V5 Mechanical Design

CATIA V5 Advanced Surface Design HD2

Auto Desk Revit MEP

Equipment Design & Simulation:

PV Elite – Pressure vessel & Heat exchanger design

FEM Platform:

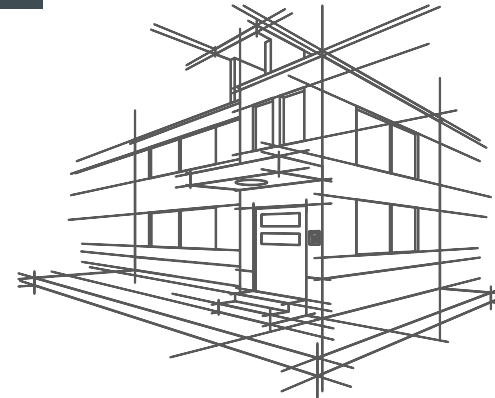
ANSYS 16 – Mechanical/Civil/Offshore Platforms

ANSYS 12- Mechanical/Civil/Offshore Platforms

CFD Platform:

ANSYS 16 ICEM/WB

ANSYS 16 CFX/FLUENT





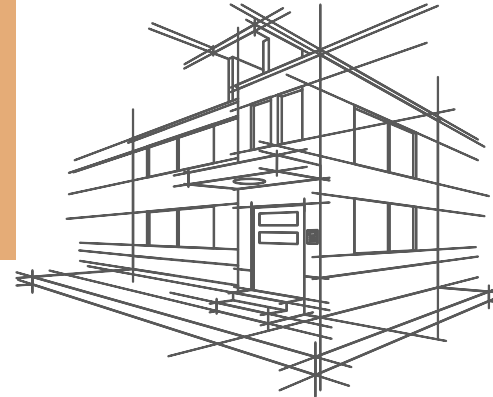
Data Management And Security System



- Design Lab is identified as a high security zone with limited personal access.
- All output ports remain deactivated. Downloading & Uploading of data is restricted only for admin login.
- Admin login is accessed through server which is protected by highly confidential passwords. Unauthorized attempt to login deactivates the system.
- PCs are anti-virus & firewall enabled to restrict proxy usage and internet usage is restricted to employees
- Mails are checked at frequent intervals by specific team.
- No movement of mass storage device or data prints is permitted in & out of the company.
- System level weekly backup and customized data backup is carried out periodically with copies maintained at remote location.



..... **AAPL Organizational
Chart**



PROFESSIONAL INDEMNITY

THE NEW INDIA ASSURANCE COMPANY LIMITED

P.O.Box :5701, Dubai, U.A.E. Tel: +971 4 3525563/ 3522539, Fax: +971 4 3518544
 E-mail : newindia@nia-dubai.com Website : www.nia-dubai.com
 (Registered in the Insurance Companies, Register under Federal Law No. (6) of 2007)
 TRN# 100049137100003



ذی نیو انڈیا اشورنس کومپنی لیمیٹڈ

سرحدی: 5701، دبئی، اے. اے. یو. ٹیلی فون: 3522539 / 3525563، فیکس: 3518544، 971 4
 نیو انڈیا اشورنس کمپنی لمیٹڈ ویب سائٹ: www.nia-dubai.com ای میل: newindia@nia-dubai.com
 (مسجلہ فی سجل شركات التأمین بموجب القانون الاتحادي رقم (6) ب 2007م)

PROFESSIONAL INDEMNITY

SCHEDULE

Whereas the Insured named in the Schedule hereto has made to The New India Assurance Company Limited, (hereinafter called "The Company") a written proposal which is the basis of this Contract and is deemed to be incorporated herein and has paid or agreed to pay the Company the Premium herein stated for the insurance hereinafter specified for the period stated in the Schedule or for any further period for which the company may accept payment for the renewal of the policy.
 Now the policy Witnesseth that subject to the terms, exclusions, conditions and definitions contained herein or endorsed otherwise expressed hereon the Company will indemnify the insured as hereinafter mentioned.

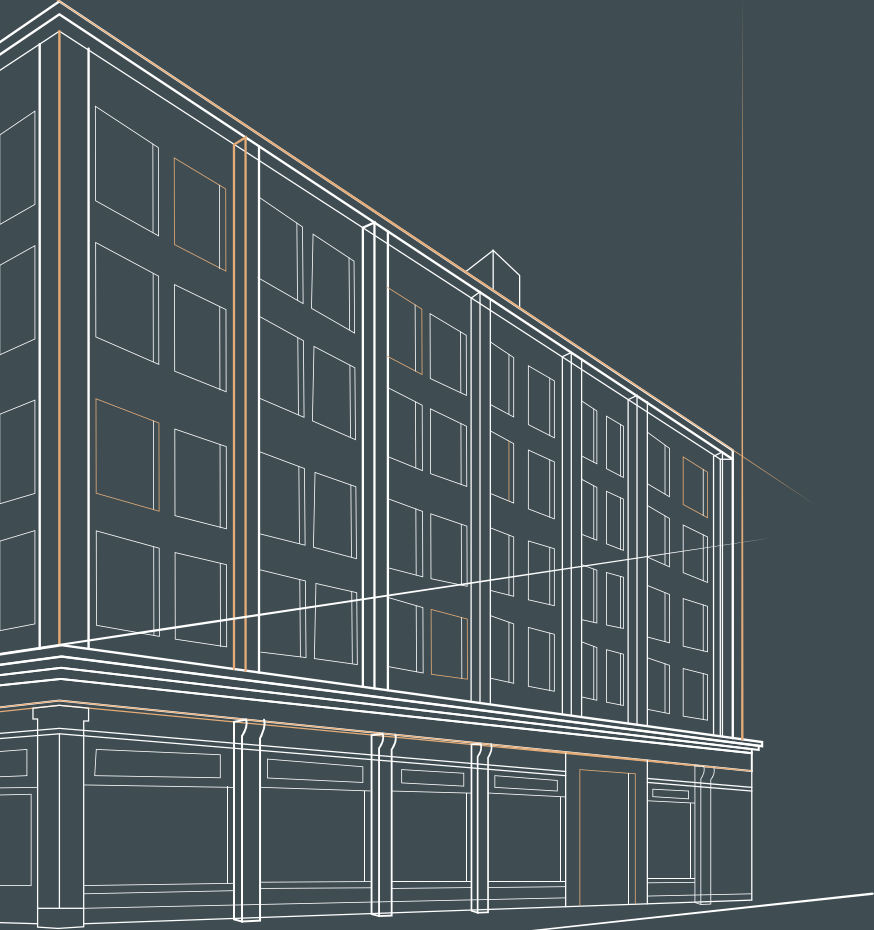
Policy No	46/911813/PI/000916	Issued at	Dubai	Issued Date	11/11/2019
Name & Address	A A P L CONSULTING ENGINEERS LLC , PO BOX.-515000 , DUBAI, UAE				
PERIOD OF INSURANCE	From:	11/11/2019	To:	10/11/2020	
SUM INSURED: Dhs	1,000,000.00				
Nature of Business	Architectural and engineering activities and related technical consultancy.				
Limit of Liability	AED 1,000,000/- any one occurrence and in aggregate.				AED 1,000,000.00
Excess / Deductible	AED 10,000/- EEL				AED 10,000.00
Location	PO Box- 515000, Sharjah, UAE				
Territorial limit	United Arab Emirates				
Legal Jurisdiction	United Arab Emirates				
Retroactive Date	11-November-2019				
Exclusion	1) All matters known or reported prior to inception. 2) Liability arising out of the insured's or their partner's / Director's association, financial or otherwise with any other firm, organization or association				
Subject to	1) Professional Indemnity policy wordings as attached. 2) Premium payment warranty - Upfront.				

In witness whereof the undersigned being duly authorised by and on behalf of the Company has / have hereunto set his/her hands.



Ralis Hassan Saadi Insurance Agents L.L.C. : Chief Agent for Dubai & Northern Emirates
 SHARJAH OFFICE : P.O. Box : 45772, Sharjah, U.A.E. Tel: +9716 5566312, Fax : +9716 5561862





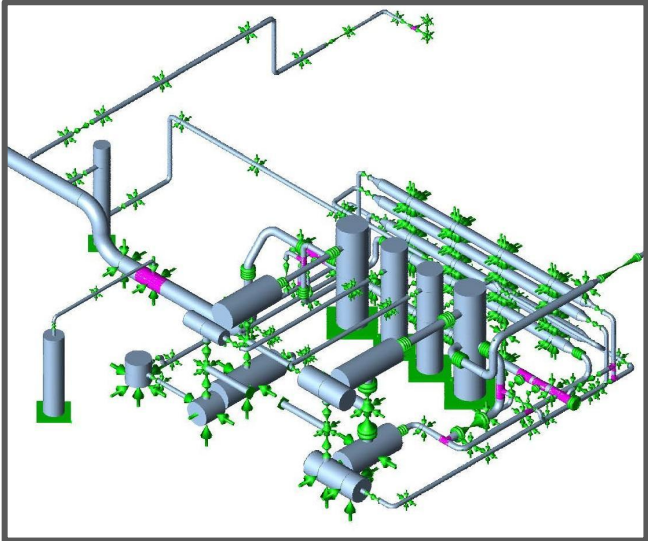
Our Services



Pipe Stress Analysis

AAPL Consulting Engineers has been providing Piping Stress Engineering to the Infra, Oil & Gas and Petrochemical Industries & Nuclear since 2009. We specialize in piping stress engineering, flexibility calculations, standard and special pipe support designs and developing piping line classes. Our highly qualified staff has expertise in analysing piping loads and stress levels, using the appropriate industry codes, for the following piping and equipment:

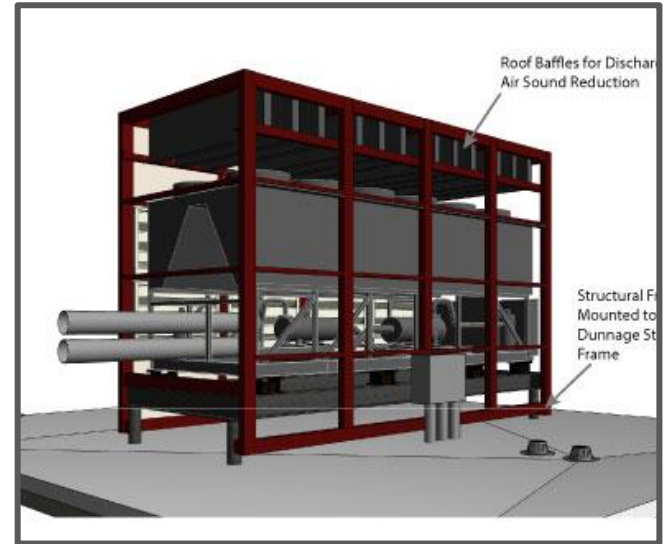
- Thermal and Sustained Stress Analysis of high pressure, vacuum and cryogenic temperature piping and large diameter piping (ASME B31.1, ASME B31.3, ASME B31.4, ASME B31.8, CSA Z662)



Acoustics Studies

Mechanical, electrical, and plumbing systems in buildings are primary sources of noise complaints by occupants. The hum from a transformer, low frequency rumble from ductwork, tonal sound of rooftop condensing units, and rushing water sounds from plumbing pipes in walls are among the many sounds that can disturb building occupants and lead to complaints. AAPL specialize in diagnosing and solving these types of problems in Buildings.

- We provide practical noise control and vibration isolation solutions and assist you every step of the way until they are fully implemented and working as intended. We prefer to engage in a stepwise process to solve noise and vibration issues in buildings, giving you the best chance for a successful outcome. We provide project specific noise control and vibration mitigation solutions, including product specifications and design details, often including multiple design options for the Client to consider. Recommendations can be prioritized so the Client can implement them in stages as funds become available.
- We are very involved in the implementation phase of the recommendations, reviewing Contractor's submittals, answering RFIs, and employing our years of field experience and in-depth knowledge of installation requirements for noise and vibration control products and systems during construction site reviews to verify compliance with our recommendations.

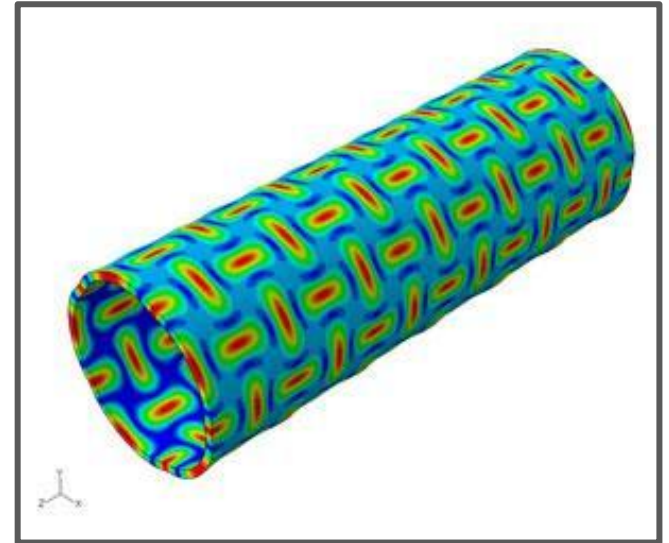


AAPL-FEA- Finite Element Analysis

AAPL FEA solutions provide the ability to simulate every structural aspect of a product, including linear/nonlinear, static/dynamic, steady/transient Structural & Thermal analyses to evaluate the stresses or deformations, modal analysis that determines vibration characteristics.

The fidelity of the results is achieved through the wide variety of material models available, the quality of the elements library, the robustness of the solution algorithms and the ability to model every product from single parts to very complex assemblies with hundreds of components interacting through contacts or relative motions which is all incorporated in the superior CAE Tools used by us.

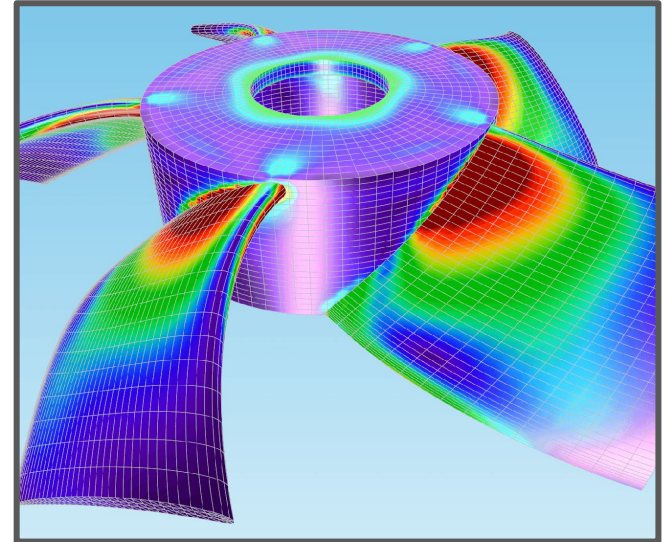
FEA Service incorporate extensive dynamic solution capabilities, including modal analysis for calculating natural frequencies and mode shapes, harmonic analysis for determining harmonically time-varying load response, linear and nonlinear transient dynamic analysis, and spectrum analysis for random vibrations model of any geometry, from slender and thin structures to massive parts, using the latest generations finite elements formulations. Nonlinear geometric effects assist in performing large deformations or nonlinear stability analyses.



Analysis Capabilities:

Structural, Thermal, Vibration & Coupled Analysis

- FEM - Stress Analysis, Vibration Analysis & Failure (Fatigue) Analysis.
- Thermal stress evaluation of Boilers, Heat exchangers, Fired heaters & equipment
- Thermal Validation of Burn Pits
- Explicit dynamics & Seismic/wind load analysis
- Fracture Mechanics - crack propagation study
- Rotating Equipment Engineering - Turbo machinery
- Static & Dynamic, Steady & Transient:
Structural-Thermal-Vibration Coupled Analysis



Structural Design Service

AAPL Consulting Engineers LLC provides efficient structural services and has an acute knowledge of engineering standards. Our Structural engineers are well experienced & skilled to undertake conceptual, preliminary & detailed structural design and are all proficient in international codes for designing structures. Our structural team works closely with architects, project developers, building owners and contractors so as to achieve the collective vision for a project, delivering effective structural solutions. Whatever the sector, scale, location or structural material, we provide a practical coordinated service, designed to maximize value and minimize construction time. We offer the following structure design services:

- Foundation Design
- Retaining Wall Design
- RCC Structure Design
- Composite Structure Design
- Steel Structure Design
- Concrete Structure Design
- Structural Design Validation
- Feasibility study
- BOQ of materials and Tenders



Surge Analysis And Hydraulics

Assured flow through hydraulic and surge studies

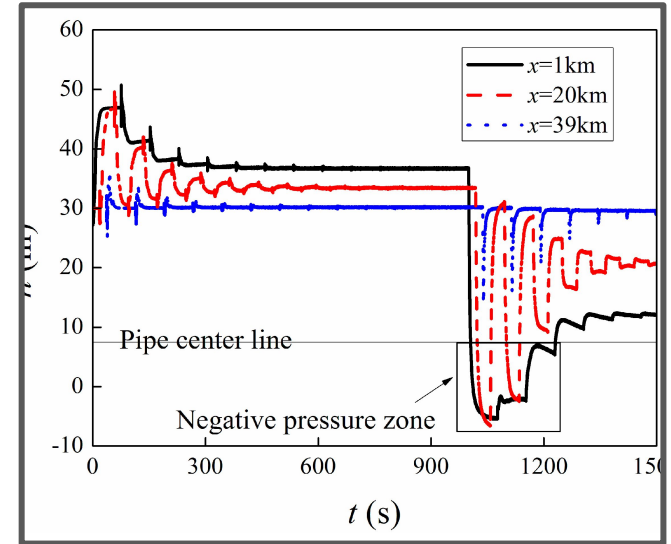
Flow Assurance refers to the successful, safe and efficient transfer of fluids within a pipeline and although it is commonly a term referred to within the Oil and Gas industry, it is equally applicable to the water, district heating and powers industries.

Surge Analysis is a flow assurance activity and refers to the analysis of pressure changes in pipework. It is usually undertaken on liquid pipelines where fluid compression is negligible and where sudden changes in flow velocity can cause over / under pressurization of pipework.

Flow assurance and Surge Analysis encompasses a range of objectives, often in different phases of a pipelines' lifecycle. AAPL Consulting Engineers conducts various studies pertaining to water hammer, pressure transients and hydraulics.

Design Upfront

In the design phase, complete designs can be simulated for verification of pipeline size, flow and pressure operating conditions and system capacity.

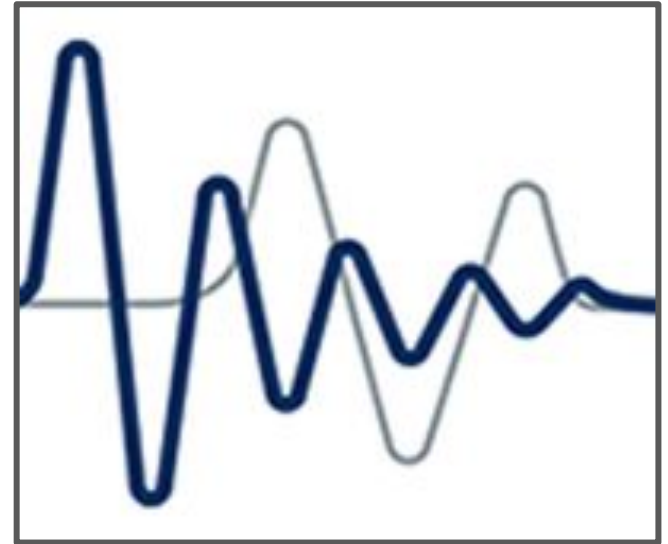


The equipment characteristics can be accurately simulated and correctly sized.

In some cases, a system may be very sensitive to certain control parameters. There is no better way of maximizing confidence in the overall system design than being able to simulate the complete interaction between the pipe work, the equipment and the control scheme. Pipe work can be correctly sized and rated, control set-points and control parameters can be tuned, system bottlenecks can be identified and surge suppression equipment can be correctly sized.

Surge pressures (or water hammer as it is also known) are generated in a pipeline whenever there is a sudden change in flow, for example, as a result of a valve opening / closing, pump start up / shutdown or interaction between equipment on a system during normal or abnormal operation, which may cause problems such as:-

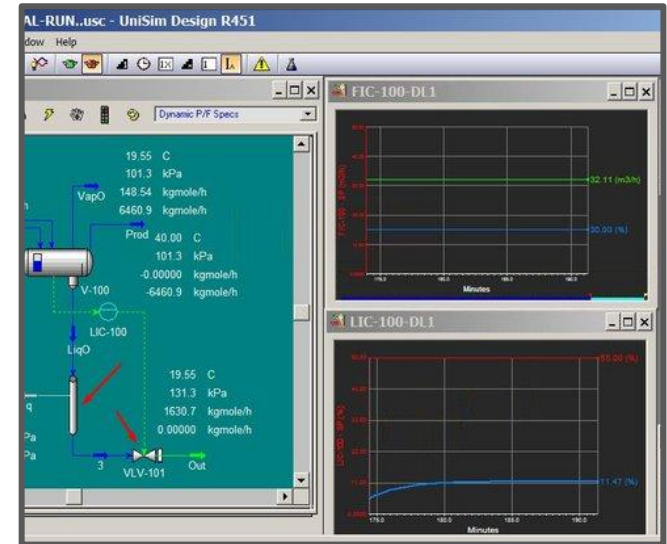
- Unacceptable high and low pressures
- Severe pipe loads
- Unwanted trips and shutdowns
- Pipe movement and vibration
- Equipment damage
- Operation of relief valves / bursting discs



The design process may of course be an extension to a current system. It may include a need to study a change of usage or it may involve decommissioning of an existing system. Future objectives for the system can be checked with current configurations to ensure that long-term objectives can be achieved without the need for future expensive retrofit solutions.

PLANNING

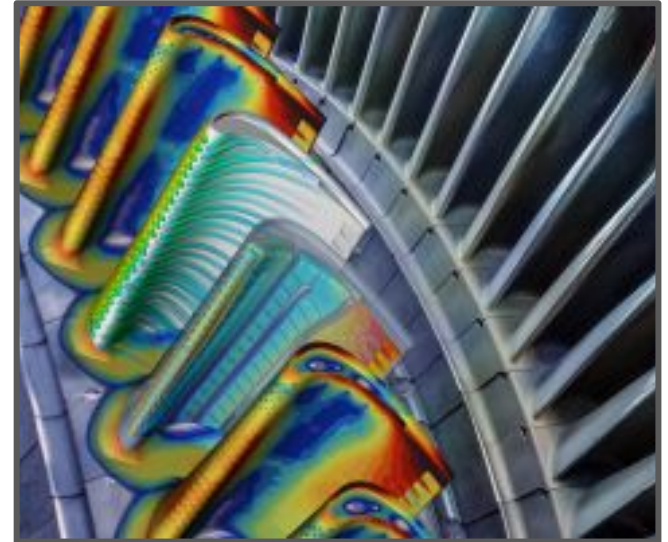
In the planning phase, AAPL Services can be used to consider the effects of future changes to the way equipment may be operated. This may be the establishment of normal start up procedures, planning for equipment maintenance or equipment decommissioning.



Computational Fluid Dynamics

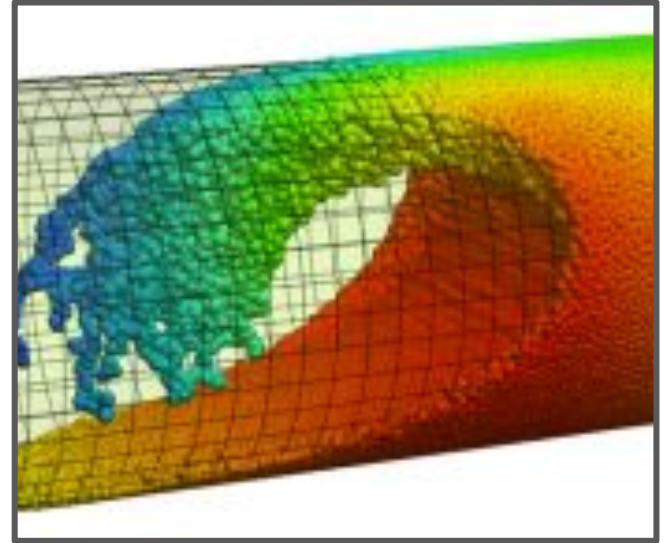
AAPL Fluid dynamics solutions are a comprehensive Engineering Simulation suite for modelling fluid flow and related physical phenomena. The solution offers unparalleled fluid flow analysis, providing all the Knowledge needed to design and optimize new equipment and to troubleshoot already existing installations.

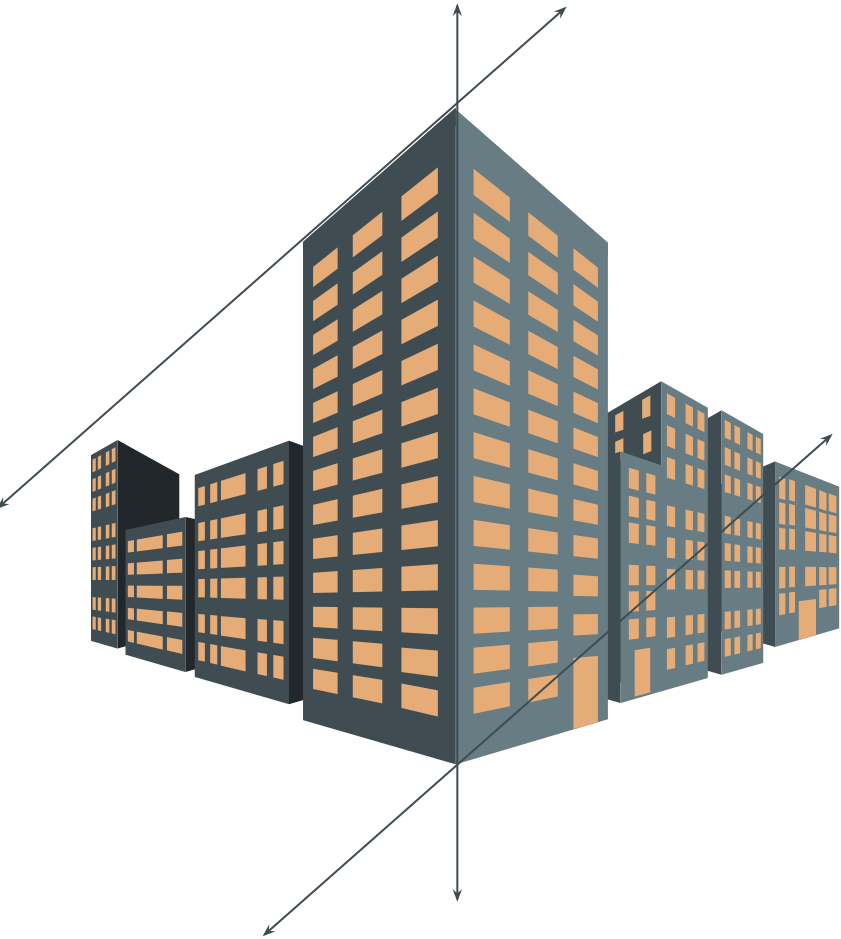
AAPL CFD fluid dynamics suite contains both general purpose computational fluid dynamics analysis and additional specialized analysis to address specific industry applications. The V Flow Solutions from AAPL have a high degree of interoperability, and are assessed to be fitted efficiently in a company's Simulation Driven Product Development processes



CFD - Domains:

- CFD Applications to Process Equipment-Boilers, Fired Heaters & Heat Exchangers
- CFD Applications to Process Piping
- CHT for Thermal Mapping – Process & Vacuum Equipment
- CHT – Radiation Heating
- CFD Applications to Chimneys and Silos & ducts Refractory's Layered Equipment.
- CFD Applications for HVAC & Clean Air Room
- CFD Applications to Wind Engineering
- CFD Applications to Aerospace & Automobile – Aerodynamic Design
- CFD Applications to Turbomachinery – Axial and Centrifugal flow devices





Trade License And ISO Certificates



Business Activities Description	وصف الأنشطة التجارية
License Number 1803600.01	رقم الرخصة
Company Name A P L CONSULTING ENGINEERS LLC	إسم الشركة إيه ايه بي إل للإستشارات الهندسية ذ م م
Activity Description	وصف النشاط

7110.02	- Engineering design (i.e. applying physical laws and principles of engineering in the design of machines, materials, instruments, structures, processes and systems) and consulting activities for: • Machinery, industrial processes and industrial plant • Projects involving civil engineering, hydraulic engineering, traffic engineering • Water management projects • Projects elaboration and realization relative to electrical and electronic engineering, mining engineering, chemical engineering, mechanical, industrial and systems engineering, safety engineering • Project management activities related to construction	7110.02	- التصميم الهندسي (أي تطبيق القوانين الفيزيائية والمواد الهندسية في تصميم الآلات والمواد والأدوات والإنشاءات والعمليات والأنظمة) والأنشطة الاستشارية فيما يتعلق بما يلي: • الآلات والعمليات الصناعية والمصانع • المشاريع التي تتضمن هندسة مبنية أو هيدروليكية أو مرورية • مشاريع إدارة المياه • وضع المشاريع وتنفيذها بالنسبة للهندسة الكهربائية والإلكترونية، وهندسة التعدين، والهندسة الكيميائية، والهندسة الميكانيكية والصناعية وهندسة النظم، وهندسة الأمن والسلامة • أنشطة إدارة المشروع المتعلقة بالمشيد
---------	--	---------	--

نود إلى أن وصف النشاط التجاري المبين في الملحق هو بحسب التصنيف الصناعي الدولي الموحد لجميع الأنشطة الاقتصادية التتبع 4، وأن هذا الملحق صادر عن ومعتمد من قبل هيئة الشارقة للإعلام - هيئة منطقة حرة (شمس).

The activity description provided in this addendum is as per the International Standard Industrial Classification of All Economic Activities (ISIC), Rev.4 and is signed off by Sharjah Media City - Free Zone Authority (Shams).

[03.01.02.1803600.01]

Page 1 of 1

Any alteration or change will void this document.

أي كسب أو تغيير في المستند الأصلي يلغيه

ISO 9001:2015



Certificate of Registration

AAPL Consulting Engineers LLC

SHAMS, Sharjah Media City, PO Box 515000, Sharjah, United Arab Emirates

IN REGARD TO
ISO 9001:2015
Quality Management Systems

For the following scope of activities:

Engineering Consultancy

INITIAL ISSUE DATE	13 September 2019
LATEST CERTIFICATION DATE	13 September 2019
CERTIFICATE EXPIRY DATE	13 September 2022
SURVEILLANCE AUDIT DUE BY	13 September 2020
CERTIFICATE STATUS	Full

Certificate No.: 14136436
Authorised Signature
For QA Certification



To check this certificate status visit: www.irqao.com

Certified that this is an accredited certificate authorised for issue by QA Certification against defined criteria and in cognisance of ISO 17021:2015 'Conformity Assessment - Requirements for bodies providing audit and certification of management systems'. This certificate and its accredited status is only valid when confirmed by the registrar listed in the International Register of Quality Assessed Organisations: www.irqao.com

This certificate is the property of QA Certification.

THE NEW INDIA ASSURANCE COMPANY LIMITED

P.O.Box : 5701, Dubai, U.A.E. Tel: +971 4 3525563/ 3522539, Fax: +971 4 3518544
E-mail : newindia@nia-dubai.com Website : www.nia-dubai.com
(Registered in the Insurance Companies, Register under Federal Law No. (8) of 2007)
TRNF# 100049137 100003



ذی نیو انڈیا اشورنس کومپنی لمیٹڈ

م.ب.خ. 5701، دبئی، ا.ع.م. هاتف: 3522539/3525563 فاكس: 3518544، 9714
www.nia-dubai.com برید الإلكتروني: newindia@nia-dubai.com الموقع: www.nia-dubai.com
(مسجلة في سجل شركات التأمين بموجب القانون الاتحادي رقم (8) لسنة 2007م)

PROFESSIONAL INDEMNITY
SCHEDULE

Whereas the Insured named in the Schedule hereto has made to The New India Assurance Company Limited, (hereinafter called "The Company") a written proposal which is the basis of this Contract and is deemed to be incorporated herein and has paid or agreed to pay the Company the Premium herein stated for the insurance hereinafter specified for the period stated in the Schedule or for any further period for which the company may accept payment for the renewal of the policy.
Now the policy Witnesseth that subject to the terms, exclusions, conditions and definitions contained herein or endorsed otherwise expressed hereon the Company will indemnify the insured as hereinafter mentioned.

Policy No	Issued at	Dubai	Issued Date	11/11/2019
46/91813/PI000916				
Name & Address	A A P L CONSULTING ENGINEERS LLC, PO BOX-515000, DUBAI, UAE			
PERIOD OF INSURANCE	From:	11/11/2019	To:	10/11/2020
SUM INSURED: Dhs	1,000,000.00			
Nature of Business	Architectural and engineering activities and related technical consultancy.			
Limit of Liability	AED 1,000,000/- any one occurrence and in aggregate.			AED 1,000,000.00
Excess / Deductible	AED 10,000/- EEL			
Location	PO Box- 515000, Sharjah, UAE			
Territorial limit	United Arab Emirates			
Legal Jurisdiction	United Arab Emirates			
Retroactive Date	11-November-2019			
Exclusion	1) All matters known or reported prior to inception. 2) Liability arising out of the insured's or their partner's / Director's association, financial or otherwise with any other firm, organization or association			
Subject to	1) Professional Indemnity policy wordings as attached. 2) Premium payment warranty - Uprfront.			

In witness whereof the undersigned being duly authorised by and on behalf of the Company has / have hereunto set his/his hands.

For THE NEW INDIA ASSURANCE COMPANY LIMITED
Rais Hassan Saadi Insurance Agents L.L.C.



Rais Hassan Saadi Insurance Agents L.L.C. : Chief Agent for Dubai & Northern Emirates
SHARJAH OFFICE : P.O. Box : 45772, Sharjah, U.A.E. Tel: +9716 5560312, Fax: +9716 5561662

Head & Home Office - New India Assurance Bldg - 87 M.C. Road - Fort Mumbai - 400 001 - India

حكومة الشارقة | Government of Sharjah
هيئة المنطقة الحرة | Free Zone Authority

مدينة الشارقة للإعلام
Sharjah Media City



رخصة تجارية | Business License

إسم الشركة / Company Name

أيه آيه بي إل للإستشارات الهندسية ذ م م
A A P L CONSULTING ENGINEERS LLC

إسم التشغيل / Operating Name

أيه آيه بي إل للإستشارات الهندسية ذ م م
A A P L CONSULTING ENGINEERS LLC

رقم التأسيس / Formation No.

1803600

تاريخ إنشاء الرخصة / License Formation Date

27-Mar-2018

النشاط/الأشطة / Activity(s)

711 - Architectural and engineering activities and related technical consultancy
7110 - Architectural and engineering activities and related technical consultancy

نوع التأسيس / Formation Type

شركة ذات مسؤولية محدودة
Limited Liability Company

العنوان / Address

مدينة الشارقة للإعلام - الشارقة - ا ع م
Sharjah Media City, Sharjah, UAE

رقم الرخصة / License No.

1803600.01

تاريخ الإنتهاء / Expiry Date

26-Mar-2021

Verification QR



صادر عن مدينة الشارقة للإعلام - هيئة منطقة حرة وخاضع لكافة القوانين والتنظيمات واللوائح الخاصة بالهيئة.
Issued by Sharjah Media City - Free Zone Authority and subject to all laws, regulations and rules that belong to the Authority.

وثيقة إلكترونية ممتدة وصادرة بدون توقيع من مدينة الشارقة للإعلام (شامس). لمراجعة صحة البيانات يرجى زيارة الموقع التالي:
Approved electronic document issued without signature by Sharjah Media City (Shams). To verify the license kindly visit:
https://shams.onbaseonline.com/shams/1701AppNet/docpop/docpop.aspx?clienttype=html&keytype=&KT128_0_0_203895610

[03.002.0R.1803600.01]

Any alteration or change will void this document.

Page 1 of 1

أي كسب أو تغيير في هذا المستند يُلغيه.

Sharjah Media City (Shams)
P.O. Box 515000
Sharjah, UAE

مدينة الشارقة للإعلام (شامس)
مطابق بريد 515000
المنطقة الحرة، الشارقة

T 800 Shams (74267)
E info@shams.ae
W shams.ae





Projects



Major Clients



Our Team

More than 10 years ago, AAPL was formed by a group of Engineers with strong belief in their capacity and competitiveness at the global level. Since its inception, we rapidly grew through diversification of expertise that addressed various sectors including Infrastructure, O & G, & Nuclear. With interagency one-stop services, we helped clients to overcome challenges and accomplish major development projects in and around GCC.

We form a group with P.E & C.E Licenses, DM approved Engineers with specific skill sets and expertise pertaining to the present industrial demand and with academic credentials minimum at a B.S level. We are a team of engineers experienced to around 20 to 30 years from Front end engineering to detailed design.



Abdul Rasheed



Abhilash



Ameer



Aneesh



Aromal S



Arshad



Faheem Ali



John K Chacko



Johnson V James



Kumar



Md Sharook Khan



Md Rashid



Pauly Cruz



Riyaf



Riyasuddin



Sabeer



Saju



Salith



Syam