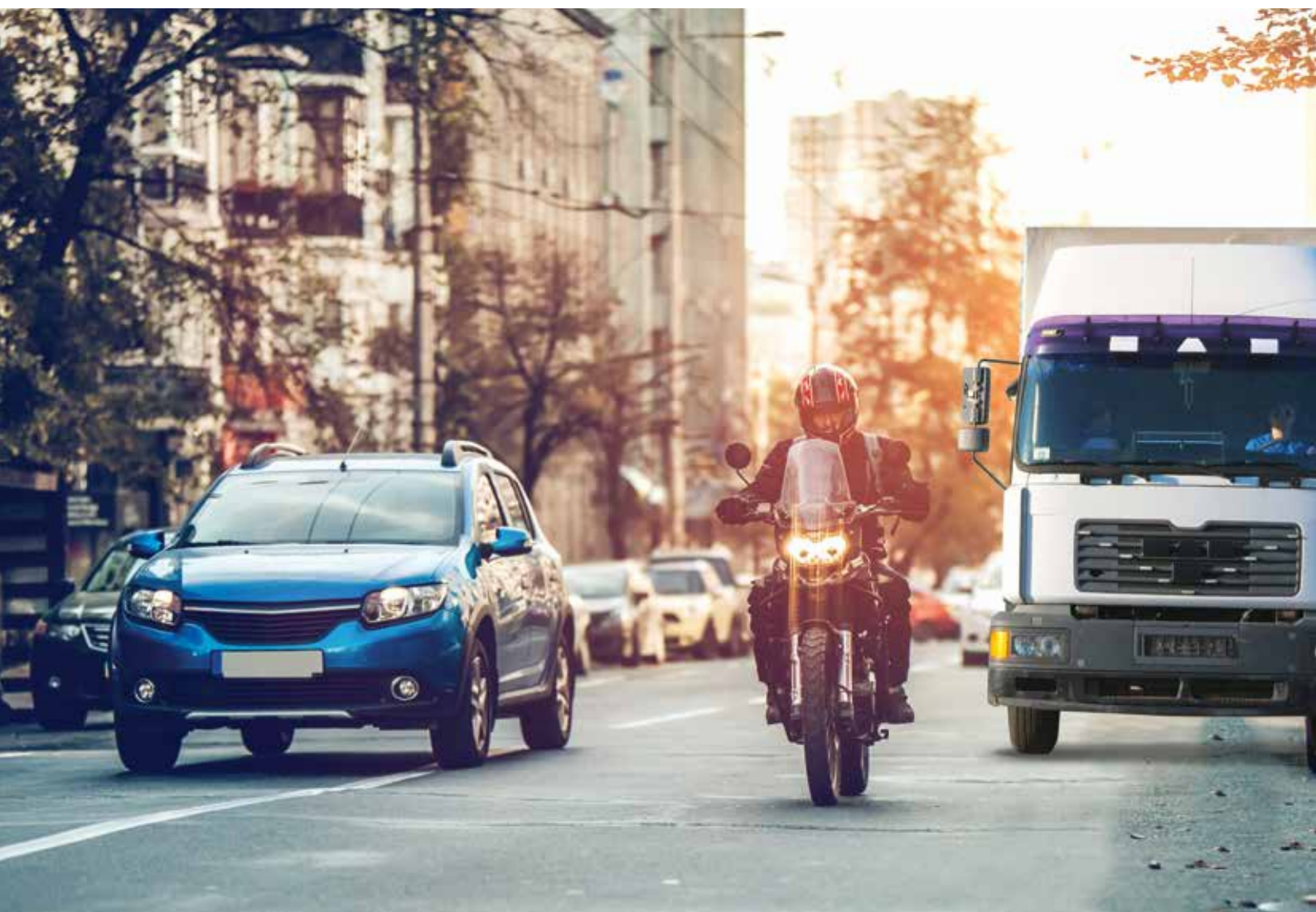


Maximum retail pricelist for bearings

Effective from March 1st, 2021

*This price list supercedes all earlier pricelists



Install confidence,
install SKF!

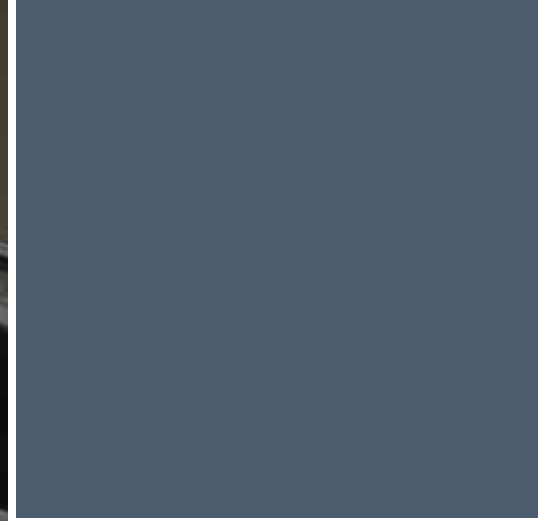




About SKF

The SKF Group has over 100 manufacturing sites worldwide, sales companies in 70 countries, representation in 130 countries, making it a truly global company. In addition, our global distribution system with distributors and dealers in over 15,000 locations around the world and an e-business marketplace puts SKF close to customers for the supply of both products and services. In essence, SKF solutions are available wherever and whenever customers need them. SKF in India has a pan India footprint comprising of six manufacturing facilities,

six offices, over 300 distributors and an employee base of over 3,300 dedicated professionals. SKF Vehicle Service Market deals with the aftermarket for cars, two wheelers, three wheelers, tractors and commercial vehicles across India. As a knowledge engineering company, SKF is much more than a components supplier — our engineers fall back on a century of SKF expertise to improve overall system reliability, safety and efficiency.



What do today's customers want?

Higher fuel efficiency. A quiet, comfortable ride. No downtime. Less maintenance. And an array of active and passive safety features.

SKF products are designed to meet such customer requirements and offers a wide range of bearings that are the best performance fit for your application. With more than 100 years of experience, SKF not only provides components but a complete support to our customers by helping them address their critical issues - reliability, efficiency and safety.

Supplementary designations

N	Snap ring groove in outside cylindrical surface of the outer ring.
NR	As N, but with snap ring.
RS1	Contact type rubber seal with sheet steel reinforcement, at one side of the bearing.
2RS1	RS1 seals at both sides of the bearing.
RZ	Low friction seal of synthetic rubber with sheet steel reinforcement at on side of the bearing.
2RZ	RZ seals at both sides of the bearing.
Z	Shield (non-contact type) at one side of the bearing.
2Z	Z shields at both sides of the bearing.
ZN	Z shield at one side of the bearing and snap ring groove in outer ring.
ZNR	As ZN, but with snap ring.
2ZNR	As 2ZN, but with snap ring.
TN9	Glass fibre reinforced polyamide 6, 6 window-type cage.
HN3	Stands for carbonitrided bearing. Performance of standard through hardened bearings can be drastically improved by the use of a surface heat treatment called carbonitriding. Carbonitriding is a high temperature heat treatment, which involves the diffusion of carbon and nitrogen into the surface of the steel. Deep Groove Ball Bearings (DGBB) with carbonitrided inner rings have been found to be twice as resistant compared to regular hardened DGBBs.
H	Stands for radial clearance in the upper half of the same clearance bracket e.g. 6002/C3H, here clearance for C3 is between 8 to 23 micron but for C3H clearance is between 15 to 23 micron. CNL Stands for radial clearance in the lower half of the same clearance bracket e.g. 6304/CNL, here clearance for normal bearing is between 5 to 20 micron but for CNL clearance is between 5 to 14 micron.
CNP	Stands for radial clearance which is a combination of the upper half of normal (CN) and the lower half of C3 range e.g. 6305/CNP, here the clearance for normal bearing is between 5 to 20 micron and 13 to 28 micron for C3. Hence, CNP clearance will be 13 to 21 micron.
VB133	Chamfer in bore deviating from basic bearing.
VQ091	Close bore diameter tolerance.
VB524	Chamfer in bore and outer diameter deviating from basic bearing.
VQ213	Special tolerance for bearing vibration & peaks.
MTF7&9	Here MT stands for medium temperature grease and F7 & F9 gives the quantities of grease.
GJN7	Here GJN stands for high temperature grease and 7 for grease quantity.
J	Pressed steel cage.
Q	SKF TQ Line bearings come with a logarithmic contact profile that provides for optimum stress distribution over roller/raceway contacts. Special design of sliding surfaces of guide flange and large roller ends considerably promotes lubricant film formation at roller end/flange contacts. Resulting benefits include increased operational reliability and reduced sensitivity to misalignment.

Internal clearance

The bearing internal clearance is defined as the total distance through which one bearing ring can be moved relative to the other under zero measuring load. Movement in the radial direction is called radial internal clearance; axial movement, axial internal clearance. The internal clearance is standardized.

Rolling bearings are delivered with different internal clearance. The internal clearance will vary from bearing type to bearing type. The most common clearance is NORMAL (with no suffix).

- C1 = Bearing internal clearance smaller than C2
- C2 = Bearing internal clearance smaller than normal
- C3 = Bearing internal clearance greater than normal
- C4 = Bearing internal clearance greater than C3
- C5 = Bearing internal clearance greater than C4

Why internal clearance?

1. In order to fit a bearing tightly on shaft it is necessary that the shaft is slightly larger than the bore of the inner ring. When the bearing is mounted, the inner ring will be expanded and consequently the space available for the rolling elements will be reduced. The reduction in space available for rolling elements when the bearing is mounted is accommodated by internal clearance
2. Steel will expand with increased temperature. In operation the temperature of the various parts of a bearing will not remain uniform and resulting in varying degrees of expansion, which is compensated by the internal clearance. The internal clearance required is dependent upon the mounting fit and the operating conditions. In case of doubt a bearing with greater clearance shall always be selected.

For more details/information, write to:

Marketing Department,
Vehicle Service Market,
SKF India Limited,
Chinchwad Pune 411 033
Phone: +91-20-6611 2500
Fax: +91-20-6611 2440
Helpline: 1800 222 007 (Toll Free from MTNL/BSNL landlines)
or +91-20-6633 7777 (normal STD charges apply)
Website: www.skfindia.com

This edition of Maximum Retail price of SKF products are as on 1st April 2018. For latest information please contact your nearest Automotive Distributor. (Please visit our website to locate a Distributor near you.) M.R.P. given in this list are recommended prices, retailers/Distributors are free to sell below the M.R.P.

The contents of this publication are the copyright of the publisher and must not be reproduced (even extracts) unless permission is granted. Every care has been taken to ensure the accuracy of the information contained in this publication but no liability for any loss or damage whether direct, indirect or consequential arising out of the use of the information contained herein.



Designation	MRP (₹)
Deep groove ball bearings	
16008	437
1838001/C3	296
1838001/C4	296
1888180	1271
1888451	1219
306445 C	954
6000	145
6000/C3	145
6000/C3D8VG043	145
6000-2RS1	197
6000-2RS1/C3	197
6000-2RS1/C4HTF7	197
6000-Z	158
6000-Z/C3	158
6000-2Z	165
6000-2Z/C3	165
6001	141
6001/C3	141
6001-RS1/C3	178
6001-2RS1	206
6001-2RS1/C3	206
6001-2RSH	206
6001-Z	160
6001-Z/C3	160
6001-2Z	164
6001-2Z/C3	164
6001-2Z/GJN	164
6001/HN3C3VG043	141
6002	161
6002/C3	161
6002/C3H	161
6002/D8VG043	76
6002-RS1	202
6002-2RS1	220
6002-RSH3/S00VG043	103
6002-Z	177
6002-Z/C3	177
6002-2Z	197
6002-2Z/C3	197
6003	190
6003/C3	190
6003/C3HD8	190
6003/C3L	190
6003-RS1	198
6003-RS1/C3	198
6003-2RS1	248
6003-Z	207
6003-Z/C3	207
6003-2Z	221
6003-2Z/C3	221
6004	207

Designation	MRP (₹)
6004/C3	207
6004/HN3	240
6004-RS1	242
6004-RS1/C3	242
6004-2RS1	269
6004-2RS1/C3	269
6004-Z	227
6004-Z/C3	227
6004-2Z	244
6004-2Z/C3	244
6004/CNHD8S0VG043	207
6005	233
6005/C3	233
6005-RS1	260
6005-RS1/C3	260
6005-2RS1	296
6005-2RS1/C3	296
6005-Z	256
6005-Z/C3	256
6005-2Z	271
6005-2Z/C3	271
6006	301
6006/C3	301
6006-RS1/C3	321
6006-2RS1	361
6006-2RS1/C3	361
6006-Z	327
6006-2Z	351
6006-2Z/C3	351
6007	320
6007/C3	320
6007-RS1	365
6007-RS1/C3	365
6007-2RS1	406
6007-2RS1/C3	406
6007-2Z	407
6010	705
6010/C3	705
6010-2RS1	789
6010-2Z	784
61804/C2LHT23	346
61804/C3	346
61805	232
61902/C3	247
61902-Z/C3	252
61902-2Z	250
61905/C3	266
61906/D8S0VB578	312
6200	134
6200/C3	134
6200-RS1	171
6200-2RS1	191

Designation	MRP (₹)
6200-2RS1/C3	191
6200-Z	151
6200-Z/C3	151
6200-2Z	168
6200-2Z/C3	168
6201	111
6201/C3	111
6201/VC4862	97
6201-RS1	135
6201-RS1/C3	135
6201-2RS1	160
6201-2RS1/C3	160
6201-2RS1/C3LLHT23	160
6201-Z	128
6201-Z/C3	128
6201-2Z	139
6201-2Z/C3	139
6202	123
6202/C3	123
6202/C3L	108
6202/HN3C3	124
6202/HN3VG043	97
6202-RS1	153
6202-RS1/C3	153
6202-RS1/MT33F9VG043	153
6202-2RS1	171
6202-2RS1/C2LHT23	171
6202-2RS1/C3	171
6202-2RS1/C3MTF7VG043	171
6202-2RSH/C3	171
6202-Z	141
6202-Z/C3	141
6202-Z/C3MTF7VG043	103
6202-2Z	153
6202-2Z/C3	153
6202-2Z/MT33F9	153
6202/VG043	147
6202/S00VG043	123
6203	157
6203/C3	157
6203/HN3C3	108
6203/HN3C3VC4862	124
6203-RS1	178
6203-RS1/C3	178
6203-RS1/C3VG043	130
6203-2RS1	203
6203-2RS1/C3	203
6203-2RS1/C3GJNVP101	203
6203-2RS1/C3MTF7	203
6203-2RS1/C3HTF7	203
6203-Z	174
6203-Z/C3	174
6203-2Z	190

Designation	MRP (₹)
6203-2Z/C3	190
6204	225
6204 N	225
6204/C3	225
6204/HN3C3L	232
6204-RS1	259
6204-RS1/C3	259
6204-2RS1	292
6204-2RS1/C3	292
6204-2RS1N	293
6204-Z	250
6204-Z/C3	250
6204-Z/HN3	250
6204-Z/HN3C3	250
6204-2RZ	297
6204-2RZ/C3	297
6204-2RZN/C3	297
6204-2Z	267
6204-2Z/C3	267
6204/D8	225
6205	301
6205 NR/C3	306
6205/C3	301
6205 E/HN3VK374	306
6205/HN3	306
6205-RS1	341
6205-RS1/C3	341
6205-2RS1	377
6205-2RS1/C3	377
6205-Z	330
6205-Z/C3	330
6205-Z/HN3C3H	330
6205-2RZ	366
6205-2RZ/C3	366
6205-2Z	353
6205-2Z/C3	353
6206	454
6206 N	454
6206 N/C3	454
6206 NR/C3	454
6206 TN9/C3VQ488	461
6206/C3	454
6206/HN3C3H	454
6206-RS1	492
6206-RS1/C3	492
6206-2RS1	522
6206-2RS1/C3	522
6206-2RS1/C3MT33	523
6206-Z	488
6206-Z/C3	488
6206-2Z	524
6206-2Z/C3	524
6207	447

Designation	MRP (₹)
6207/D8	447
6207/C3	447
6207/C3D8	447
6207 N	436
6207 NR	447
6207 NR/C3	447
6207-RS1	480
6207-RS1/MT	499
6207-2RS1	530
6207-2RS1/C3	530
6207-Z	486
6207-Z/C3	486
6207-2Z	514
6207-2Z/C3	514
6208	539
6208/C3	539
6208 N	549
6208 N/C3	549
6208 NR	568
6208 NR/C3	568
6208-RS1	591
6208-2RS1	631
6208-2RS1/C3	631
6208-Z	585
6208-Z/C3	585
6208-2Z	615
6208-2Z/C3	615
6209	651
6209/C3	651
6209-2RS1	739
6209-2RS1/C3	739
6209-Z	696
6209-Z/C3	696
6209-2Z	737
6209-2Z/C3	737
6210	684
6210/C3	684
6210 N	688
6210 N/C3	688
6210 NR	718
6210-2RS1	910
6210-2RS1/C3GJN	910
6210-Z	740
6210-ZNBR	1092
6210-Z/C3	740
6210-2Z	779
6210-2Z/C3	779
6211	896
6211/C3	896
6211-RS1	954
6211-2RS1/HTF7	974
6211-Z	957
6211-2Z	993

Designation	MRP (₹)
6211-2Z/C3	993
6212	1020
6212/C3	1020
6212-2RS1	1177
6212-2RS1/C3	1177
6212-Z/C3	1162
6212-2Z	1175
6212-2Z/C3	1175
6213	1116
6213/C3	1116
6213-2Z	1195
6213-2Z/C3	1195
628/D8	141
628-2Z	149
629-2RS1	143
629-2Z	130
629-2Z/C3	130
63/28/C3HN3	619
63006-2RS1/C4S00HT	513
6301	114
6301/C3	114
6301-RS1	137
6301-RS1/C3	137
6301-RS1/VC5131F9	137
6301-RS1/MTF7	137
6301-RS1/MT33F9	137
6301-RS1/C3MTF9	137
6301-RS1/C3VC513F9	137
6301-2RS1	148
6301-2RS1/C3	148
6301-2RS1/C3VC5131	148
6301-2RS1/C3LGWF	162
6301-2RS1/VC5131F7	148
6301-Z	133
6301-Z/MT33F9	133
6301-Z/C3	133
6301-2Z	140
6301-2Z/C3	140
6302	231
6302/C3	231
6302-RS1	256
6302-RS1/C3	256
6302-RS1/C3H	140
6302-RS1/C3HVG043	130
6302-2RS1	286
6302-2RS1/C3	286
6302-Z	248
6302-Z/C3	248
6302-2Z	256
6302-2Z/C3	256
6303	264
6303/C3	264
6303-RS1	298

Designation	MRP (₹)
6303-RS1/C3	298
6303-2RS1	328
6303-2RS1/C3	328
6303-2RS1/C3HTF7	328
6303-Z	289
6303-Z/C3	289
6303-2Z	305
6303-2Z/C3	305
6304	227
6304/C3	227
6304 N	241
6304 N/C3	241
6304/HN3C3LVB133	189
6304-RS1	264
6304-RS1/C3	264
6304-2RS1	289
6304-2RS1/C2LHT23	289
6304-2RS1/MTF7	289
6304-2RS1/C3	289
6304-Z	255
6304-Z/C3	255
6304-2Z	268
6304-2Z/C3	268
6305	340
6305/C3	340
6305/C3H	346
6305 N	342
6305 N/C3	342
6305-RS1	375
6305-2RS1	403
6305-2RS1/C3	403
6305-Z	365
6305-Z/C3	365
6305-2Z	387
6305-2Z/C3	387
6306	475
6306/C3	475
6306 N	476
6306 N/C3	476
6306 NR	491
6306-RS1/MT	514
6306-2RS1	544
6306-2RS1/C3	544
6306-Z	505
6306-Z/C3	505
6306-2Z	524
6306-2Z/C3	524
6306/HN3CNP	470
6307	552
6307/C3	552
6307 N	554
6307 N/C3	554
6307 NR	575

Designation	MRP (₹)
6307 NR/C3	575
6307-RS1/MT	781
6307-2RS1	781
6307-2RS1/C3	781
6307-2RS1NR/C3	796
6307-Z	582
6307-Z/C3	582
6307-2Z	605
6307-2Z/C3	605
6307/D8	544
6308	809
6308/C3	809
6308 N	814
6308 N/C3	814
6308 NR	840
6308 NR/C3	840
6308-Z	861
6308-Z/C3	861
6308-ZN	865
6308-ZN/C3	865
6308-ZNR	894
6308-2Z	900
6308-2Z/C3	900
6308-2RZNR/C3	921
6309	1323
6309/C3	1323
6309 N	1332
6309 N/C3	1332
6309 NR	1373
6309 NR/C3	1373
6309-RS1	1382
6309-RS1/C3	1382
6309-2RS1	1439
6309-2RS1/C3	1439
6309-Z	1398
6309-Z/C3	1398
6309-2Z	1439
6309-2Z/C3	1439
6310	1334
6310/C3	1334
6310 N	1340
6310 N/C3	1340
6310 NR	1382
6310 NR/C3	1382
6310-2RS1	1470
6310-2RS1/C3	1470
6310-Z	1434
6310-2Z	1456
6310-2Z/C3	1456
6311	1956
6311/C3	1956
6311-2RS1	1992
6311-2RS1/HTF7	2088

Designation	MRP (₹)
6311-Z	2054
6311-Z/C3	2054
6311-2Z	2110
6311-2Z/C3	2110
6312	2311
6312/C3	2311
6312-2RS1	2458
6312-2RS1/C3	2458
6312-Z	2418
6312-Z/C3	2418
6312-2Z	2470
6312-2Z/C3	2470
6313	2648
6313/C2	2648
6313/C3	2648
6313-2RS1	2797
6313-2RS1/C3	2797
6313-Z	2757
6313-Z/C3	2757
6313-2Z	2814
6313-2Z/C3	2814
6313-2ZNR	2874
6313-RS1/C3HTVT193	2665
QJ 209 MA/C2	1403
QJ 309/C2	1435
RLS 7	1431
VKWM 1944 (BB1- 3902)	316
VKWM 1945 (BB1- 4764 B)	270
VKWM 1946 (BB1-4788)	259
VKP 63031 (LS 8)	276
VKBC 1006 (MS12)	632
VKT 8023 (62/28)	519
VKT 8065 (6308/C3 R0)	606
VKT 8067 (6211/C3 R0)	648

Imported deep groove ball bearing

VKEB 61033 (608 2Z)	131
VKT 8016 (6308-2RS1/C3)	972
VKT 8017 (6009-2RS1)	1026
VKT 8013 (6011-2Z)	1312
VKT 8025 (6015)	1944
VKT 8014 (6214)	2390
VKT 8015 (6314)	3934
VKT 8018 (6011-2RS1)	1521
VKT 8019 (6011)	1126
VKT 8020 (6012)	1218
VKT 8021 (6013)	1707
VKWB 1782 (61903-2RS1)	474
VKT 8022 (6014)	1803

Designation	MRP (₹)
Tapered roller bearing	
02872/2/02820/2/Q	765
09067/09195/Q	530
15123/15245/Q	524
1988/1922/Q	484
24780/24720/Q	672
25572/25520/Q	856
25577/2/25523/2/Q	870
25580/25522/Q	831
25590/2/25520/2/Q	945
25590/2/25523/2/Q	945
25877/2/25821/2/Q	723
2789/2729/Q	783
28580/2/28521/2/Q	936
30203 J2/Q	330
30204 J2/Q	363
30205 J2/Q	386
30206 J2/Q	511
30207 J2/Q	557
30208 J2/Q	867
30209 J2/Q	640
30211 J2/Q	1178
30214 J2/Q	1556
30215 J2/QCLN	1655
30302 J2/Q	371
30305 C	549
30306 J2/QCLN	644
30308 J2/Q	911
30309 J2/Q	1275
30312 J2/Q	2341
31309 J2/QCLN	1346
31594/2/31520/2	975
320/32 X/Q	441
32004 X/Q	455
32006 X/Q	452
32007 X/Q	568
32008 X/Q	632
32010 X/Q	770
32012 X/QVB531	1154
32013 X/QVB533	1226
32014 X/Q	1433
32020 X/Q	2410
32205 BJ2/Q	456
32207 J2/Q	740
32210 J2/Q	969
32211 J2/Q	872
32212 J2/Q (330201/Q)	1349
32213 J2/Q	1911
32214 J2/Q	1580
32216 J2/Q	2420
32217 J2/Q	2885
32218 J2/Q	4806
32305 J2/Q	659

Designation	MRP (₹)
32307 J2/Q	1070
32308 J2/Q	999
32309 J2/Q	1326
32911/Q	1155
33005/Q	496
33010/Q	892
33019/Q	2580
330201/Q	1544
330356 B/Q (32213)	1884
330632 C/Q (31312)	2549
33108/U4Q	724
33111/QVB500	1253
33112/Q	1542
33215/Q	2534
344/332/Q	822
3585/3525/Q	1273
3780/3720/Q	1418
3782/3720/Q	1448
387/382 A/Q	1106
395/394 A/Q	1329
395 A/394 A/Q	1302
395 S/394 A/Q	1302
39580/W/2/39520/2/Q	2034
39581/39520/Q	2034
3982/3920/2/Q	1673
3984/2/3920/2/Q	1538
39585/39520/Q	1339
399 A/394 A/QVB079	1267
418/414/Q	931
42687/42620	1661
42690/42620/Q	1982
462/453 X/VB535	1342
47487/47420 X	1615
482/472/Q	1528
497/492 A/Q	2896
535/532 A	1386
539/532 X	1242
566/563/Q	1434
567/563	1612
575/572/Q	2017
580/572/Q	1498
55200 C/55437/QVE807	2252
6379/K-6320/Q	2830
683/672/Q	2742
687/672/Q	2906
72212/2/72487/2/Q	1583
BT1-0017 A/Q	403
BT1-0230/Q	2799
BT1-0381/Q	1158
BT1-0500/Q	2932
BT1-0501/Q	2266
BT1-0702/Q	1418
BT1-1066/Q	1339

Designation	MRP (₹)
BT1B 329013 A/Q	509
BT1-0589(30311)	1777
BT1-0677(30315)	3240
BT1-0643(31308)	1150
HM 212049/011	2076
HM 903249/2/210/2/Q	1478
JLM 710949/910/Q	1204
LM 11949/910/Q	478
LM 29749 F/711/Q	534
LM 29749/710/QCL7CVA607	594
LM 48548/510/Q	432
LM 501349/310/Q	621
LM 501349/314/Q	816
LM 603049/011	797
LM 603049/012/Q	611
M 12649/610/Q	516
M 802048/011/Q	1224
M 86649/2/610/2/Q	813
M 88048/010/Q	791
VKT 8001 (30210)	638
VKT 8002 (31312 L)	2184
VKT 8024 (32005 X)	386
VKBC 1000 (30213)	1287
VKBC 1007 (32206)	531
VKBC 1002 (32208)	660
VKBC 1001 (30304)	380
VKBC 1003 (32220)	4292
VKBC 1004 (33210)	1381
VKBC 1005 (33211)	1539
VKBC 1009 (33217)	2554
VKBC 1018 (32009X)	629
VKT 8047 (33209)	784
VKT 8061 (32306)	596
VKT 8059 (3659)	460
VKT 8004 (32310)	1379
VKT 8006 (15100S/15250X)	487
VKT 8009 (3188S/3120)	790
Imported tapered roller bearings	
BT1-0523/VU1006 (30307 type)	900
BT1-0524/VU1006 (32208 type)	744
BT1-0525/VU1006 (32209 type)	779
BT1-0526/VU1006 (30210 type)	725
BT1-0528 A/VU1006 (30216 type)	1844
BT1-0530/VU1006 (32219 type)	4010
BT1-0545 A/VU1006 (30212 type)	1106

Designation	MRP (₹)
BT1-0553 A/VU1006 (32220 type)	5259
VKBC 0959 (33207/Q)	2059
VKBC 0960 (33205/Q)	1320
VKBC 0962 (32011 X/Q)	1425
VKBC 0964 (33012/Q)	6175
VKBC 0929 (32215 J2/Q)	1848
VKBC 0957 (497/460 L)	1722
VKBC 0958 (U 399/360 A/L)	1454
VKT 8012 (30310 J2/Q)	2874
VKT 8091	5225

Spherical roller bearing

VKT 8008 (22212CC)	2350
--------------------	------

Cylindrical roller bearing

VKT 8010 (NJ 310 N)	1152
VKT 8064 (NU2209EMN)	896
VKT 8056 (NUP 310 NR)	1134
VKT 8051 (NU 310 N)	1134
VKT 8060 (NU 309 E)	830

BB1 Series

Variant	Segment	Suitable for vehicle make	Suitable for vehicle model	Application	MRP
BB1-0016 A	PC & UV	Tata Motors/Fiat Motors	Indica Vista/Manza/Fiat Punto/Linea	Gearbox C- 510 Fuat	294
BB1-0037 CE (6203 type)	PC & UV	Tata Motors Mahindra & Mahindra Ltd	Nano Mahindra Jeep	Bosch GCM1 alternator Drive end bearing	217
BB1-0078	PC & UV	Ford	Fiesta/Ikon	Spares/AVTEC Transmission	457
BB1-0097 (6201 type)	PC & UV	Tata Motors	Nano	Bosch GCM1 alternator Drive end bearing	163
BB1-0234 (6205 type)	PC & UV	Maruti Suzuki	Swift	Transmission	256
BB1-0372 AB (6202 type)	PC & UV	Hyundai Motors	Santro/Accent	Bosch Zelta alternator Non drive end bearing	170
BB1-0372 BE	2W/3W Segment	India Yamaha Motor Pvt Ltd	Alpha Plus	Gear primary drive (Secondary Belt)	170
BB1-0382 (6202 type)	PC & UV	Bosch	Alternator	Lucas starter bearing	185
BB1-0390 A (6200 type)	2W/3W Segment	Hero Moto Corp	Passion	Clutch covershaft	188
BB1-0420 A (6002 type)	PC & UV	Hyundai Motors	Santro/Accent	Bosch GCM 2 rear side alternator	153
BB1-0434 (6303 type)	2W/3W Segment	OMR Bagla Automobiles	NA	Electric motor	255
BB1-0434 A (6303 type)	2W/3W Segment	AUR. Motors Ltd	NA	Electric motor	255
BB1-4724 B	2W/3W Segment	India Yamaha Motor Pvt Ltd	Alpha Plus	Transmission	232
BB1-0563 (6205 type)	PC & UV	Maruti Suzuki	Zen	BEHR viscus clutch system	293
BB1-0596 (62/22 type)	2W/3W Segment	Mahindra & Mahindra Piaggio Motors India Yamaha Motors Ltd	Alfa Ape RZ	Rear axle/Crankshaft	244
BB1-0633 A (6303 type)	PC & UV	Bosch/Auto Ignition	Zeta	Alternator	392
BB1-0697 A	2W/3W Segment	Honda	Unicorn 160 CC	Mainshaft	117
BB1-0877	PC & UV	Maruti Suzuki	EECO	Rear axle	538
BB1-3040 A (BB1-3040 type)	PC & UV	Tata Motors - Indica	Delphai TVS Pump	Lucas DPC fuel pump	480
BB1-3065 DC (BB1-3065 CE type)	PC & UV	Ford	Fiesta	Lucas TVS alternator Drive end bearing	338
BB1-3065 EA (6303 type)	PC & UV	Ford	Fiesta	Lucas TVS Alternator Drive end bearing	338
BB1-3150 (6006)	2W/3W Segment	Hero Moto Corp	CBZ	Main shaft RH	355
BB1-3169 (6308/ VE250 type)	CV & TRACTOR	Swaraj Mazda	T 3500	Main shaft Bearing	968
BB1-3191/HN3 (BB1-3191 type)	CV & TRACTOR	John Deere	5103	Drive shaft	536
BB1-3191	2W/3W Segment	Royal Enfield	Machismo	Transmission	485

Variant	Segment	Suitable for vehicle make	Suitable for vehicle model	Application	MRP
BB1-3264 (6305 type)	PC & UV	Toyota		Transmission/Lucas TVS Alternator	975
BB1-3273 (6308 E type)	PC & UV	Toyota	Fortuner	Inputshaft Rear Side (R150 transmission)	1256
BB1-3273 A	PC & UV	Mahindra & Mahindra Ltd	Scorpio - New Model	Rear axle	1155
BB1-3274	PC & UV	Toyota	Fortuner	Output Rr side, R150 transmission	539
BB1-3275 (6307 E type)	PC & UV	Toyota	Fortuner	Output Ct side, R150 transmission	1115
BB1-3284 (6206 type)	PC & UV	Maruti Suzuki	Zen	Steering Bearing	712
BB1-3358 (6213 type)	CV & TRACTOR	Tafe	MF 1035 DI, 30 DI - IDB Rear axle(Dura Brake Models)	Rear axle IDB Model	1855
BB1-3374 (6308/ VE250 type)	PC & UV	Mahindra & Mahindra Ltd	Zylo/Scorpio	Rear axle Bearing	650
BB1-3459 (6306 E type)	PC & UV	Mahindra & Mahindra Ltd	XUV 500 All Wheel Drive/ Xylo	Transmission Input- shaft	565
BB1-4700 A (61804 type)	PC & UV	Maruti Suzuki	Alto/Wagon R	Steering	167
BB1-4701 (6302 type)	2W/3W Seg- ment	Hero Moto Corp	Achiever/Hunk/CBZ	Transmission	405
BB1-4702 A (6302 type)	2W/3W Seg- ment	Honda	Aciva/Deo	Crank case	258
BB1-4704 (6203 type)	2W/3W Segment	Yamaha	Crux/Libero/Alba/Gladiator	Crankshaft	244
BB1-4705 AE	2W/3W Segment	India Yamaha Motor Pvt Ltd	Alpha Plus	CRANKshaft	365
BB1-4705 B (6305 E type)	2W/3W Segment	India Yamaha Motor Pvt Ltd	FZ 16	Crankshaft	365
BB1-4705 BA	2W/3W Segment	Yamaha	FZ150/SZ150/Fazer/ Saluto	Crankshaft Right	308
BB1-4712 (6004 type)	CV & TRACTOR	Tata Motors	Indica	Lucas Starter Bearing	225
BB1-4714 (6004 type)	2W/3W Segment	YAMAHA	FX/R15	Transmission	204
BB1-4719	2W/3W Segment	India Yamaha Motor Pvt Ltd	FZ 16	Crankshaft	391
BB1-4721 (6003 type)	2W/3W Segment	YAMAHA	FX/R15	Transmission	184
BB1-4722 (6203 type)	2W/3W Segment	YAMAHA	FX/R15	Transmission	184
BB1- 4728 (6206 type)	2W/3W Segment	LML	Supreme/Star/Select II/ Pulse	Engine	363
BB1-4730	2W/3W Segment	Yamaha	Clutch lifter baring	Clutch Lifter Bearing	162
BB1-4751 C	2W/3W Segment	Honda	Unicorn 160 CC	Countershaft	198
BB1-4752 C	2W/3W Segment	Suzuki India Limited	New Access 125 CC	Crankshaft	187
BB1-4758 E	2W/3W Segment	Honda	Unicorn 160 CC	Camshaft	139
BB1-4787 A	2W/3W Segment	Honda	Unicorn 160 CC	Balancershaft -Left And Right	118

Variant	Segment	Suitable for vehicle make	Suitable for vehicle model	Application	MRP
BB1-4800	2W/3W segment	India Yamaha Motor Pvt Ltd	Alpha plus	Crank front	342
BB1-4823	2W/3W Segment	Yamaha	RX 110	Crankshaft	184
BB1B 446740 CD	PC & UV	Mahindra & Mahindra	XUV 500	Intermediateshaft	623
BB1B 446740 CE	PC & UV	Mahindra & Mahindra Ltd	XUV 500	Driveshaft	706
BB1B 630819 A (6304 type)	2W/3W Segment	Bajaj	Saffire	Crankshaft	355
BB1B 630819 A/ HN3 (6304 type)	2W/3W Segment	Bajaj	Safire	Crankshaft	355
BB1B 631046 B	PC & UV	Tata Motors/Fiat	Indica Vista/Manza/Fiat Punto/Linea	Mainshaft	462

HUB bearings

Variant	Application	Suitable for vehicle make	Suitable for vehicle model	MRP
BAH-0013 D	Rear wheel	Piaggio	Ape truck	1407
BAH-0036	Front wheel	Tata Motors Ford India	Vista, Indigo, Manza Ikon	1138
BAH-0052	Front wheel	Tata Motors Fiat India	Indica Uno, Palio, Siena	963
BAH-0052 C	Rear wheel	Bajaj Auto	MEGA RE Diesel	1088
	Front wheel	Mahindra &Mahindra	Maximo	
BAH-0087	Front wheel	Maruti Suzuki	Maruti 800, Omni, Esteem, Zen (New)	842
BAH-0104	Front wheel	Maruti Suzuki	Alto & WagonR (old models)	942
BAH-0109 B	Front wheel	Ford India	Fiesta, Fusion, Ikon, Figo	1116
BAH-0179	Rear wheel	Tata Motors Maruti Suzuki	Indica, Indigo Marina, Vista, Manza RitZ	1007
BAH-0202B		Tata Motors	Ultra 10.2, Ultra 7.5, Ultra 8.5	1000
BAH-0221	Front wheel	Maruti Suzuki	Alto K10, WagonR, Zen Estilo, A-Star (New Models)	747
BAH-0229	Front wheel	Maruti Suzuki	Swift, Swift Dzire, Ritz, Ciaz	1055
BAH-0230	Front wheel Non ABS, Rear wheel	Maruti Suzuki Piaggio	Swift, Swift Dzire FW Non ABS Piaggio Porter RW	963
BAH-0259 A	Front wheel	Tata Motors	Zest, Bolt	1305
BAH-0261	Front wheel Non ABS	Mahindra & Mahindra Nissan Rennault	Verito, Vibe, Logan Micra Sunny, Pulse	1474
BAH-0263	Front wheel ABS	Mahindra &Mahindra	Verito, Vibe, KUV 100	1548
BAH-0265	Front wheel	Renualt India Limited	KWID	761
BAH-0275	Rear wheel	Maruti Suzuki	Swift, Swift Dzire,	1072
BAH-0278	Rear wheel	Maruti Suzuki	Alto, A Star, Wagon R, Estillo	1049
BAHB-636193 C	Front wheel	Hyundai Motors	Santro, Accent, Getz, i10, i20	1191
BAHB-636149 CC	Front wheel ABS	Maruti Suzuki	Ertiga, SX4	1500
BAHB-636149 CD	Front wheel Non ABS,	Maruti Suzuki Tata Motors	Ertiga, SX4 Tata Winger	1310

Taper HUB bearing

Variant	Application	Suitable for vehicle make	Suitable for vehicle model	MRP
BTH-1024 AE	Front wheel	Mahindra &Mahindra	Xylo, Scorpio	1889
BTH-1206 AB	Rear wheel	Ford India	Fiesta, Fusion, Figo	2085
BTH-1238	Rear wheel	Tata Motors	Ace Pickup, Iris	1529
VKBC 1008 (BTHB 329129 DE)	Rear wheel	Tata Motors	Xenon, 207 DI (New Model)	2038
BTH-1256	Front wheel	Toyota Motors	Innova	1902
BTH-1258	Rear wheel	Isuzu D Max	Cross 4*4 Pickup	1900
BTH-1265 A	Front wheel	Mahindra &Mahindra	TUV 300	1956

Imported HUB units

Variant	Application	Suitable for vehicle make	Suitable for vehicle model	MRP
VKBC 0968	Front wheel	Toyota	Corolla E1, Altis	2121
VKBC 0969	Front wheel	Toyota	Camry	3131
VKBC 0970	Front wheel	Honda	Accord	3131
VKBC 0971	Front wheel	Mitsubishi	Lancer	1717
VKBC 0979	Front wheel	Skoda	Octavia	1768
VKBC 0980	Front wheel	Skoda	Fabia	5303
VKBC 0981	Front wheel	Skoda	Laura	4798
VKBC 0993	Rear wheel	Hyundai Motors	Accent ABS	3434
VKBC 0994	Rear wheel	Hyundai Motors	Accent non ABS	3131
VKBC 0995	Rear wheel	Hyundai Motors	Santro non ABS	3030
VKBC 0996	Rear wheel	Hyundai Motors	Santro ABS	3384
VKBC 0997	Rear wheel	Hyundai Motors	i10, i20, Getz, OLD Verna, Grand i10 Non ABS	4293
VKBC 0998	Rear wheel	Hyundai Motors	i10, i20, Getz, OLD Verna, Grand i10 ABS	5303
VKBC 0999	Rear wheel	Hyundai Motors	Verna Fluidic ABS	5050



SKF premium grease



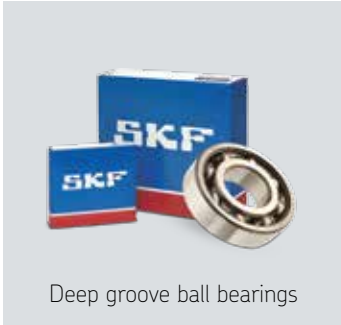
Seals



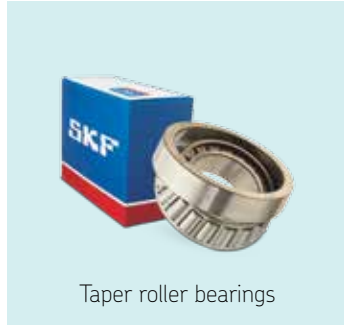
Hub bearing units



Centre support bearings



Deep groove ball bearings



Taper roller bearings



2W application kit



Universal joint kits



Chain and Sprocket



Steering and Suspension



Timing Belt

Install confidence, install SKF!

Vehicle Service Market
SKF India Limited
Chinchwad, Pune 411 033 India
Tel: +91-20-6611 2500
CIN: L29130MH1961PLC011980

Scan QR code
for any support



<https://bit.ly/37VQY1b>

To know more about SKF VSM's complete range of products: "Download our free app from google play and iOS app store" just search for "VSM SKF India parts"



skf.com | skfindia.com

© SKF is a registered trademark of the SKF Group
© SKF Group 2021

This edition of Maximum Retail price of SKF products are as on January 1, 2021. For latest information please contact your nearest SKF Automotive Distributor. (Please visit our website to locate a distributor near you.) M.R.P. given in this list are recommended prices, retailers/distributors are free to sell below the M.R.P.

Prices are subject to change without prior notice.

The contents of this publication are the copyright of the publisher and must not be reproduced (even extracts) unless permission is granted. Every care has been taken to ensure the accuracy of the information contained in this publication but no liability for any loss or damage whether direct, indirect or consequential arising out of the use of the information contained herein.

PUB 80/P5 19103 EN.IN · March 2021

Certain image(s) used under license from Shutterstock.com.