

# General Information Packet For



**EZLIVIN**  
EXPANDABLE TINY HOMES

**WOOD**  
SALES COMPANY, INC  
KING OF SURPLUS MERCHANDISE

662-454-9237  
[www.ezlivinhouses.com](http://www.ezlivinhouses.com)



Find us on  
Facebook!



**EZLIVIN**  
EXPANDABLE TINY HOMES

## 20" X 20' EXPANDABLE CONTAINER HOUSE



Lead Time: Approximately 90 Days  
From Order to Delivery



662-454-9237  
[www.ezlivinhouses.com](http://www.ezlivinhouses.com)



Find us on  
Facebook!



**EZLIVIN**  
EXPANDABLE TINY HOMES

- Takes 4-5 people less than one hour to expand to full size
- Takes 2 people approximately 6-8 hours to set the kitchen cabinets, install windows and finalize interior trim
- Easy one day setup from start to finish
- Termite proof, all non-wood construction
- All metal structure is fire and water resistant
- Solid walls with no cavities eliminates habitat for pest to live
- Easily portable, can be quickly disassembled and moved from location to location
- Can be set on most any type of prepared ground - it is recommended to be put on blocks or a concrete slab but it is not required
- Pre-wired & plumbed with only minor connections left to be made
- Exterior walls are solid 2" foam panels with 28 gauge metal for interior and exterior walls (sandwich panels)
- Bathroom area, shower, toilet, sink are completely installed at the factory
- Removeable wall panel allows for the house to be used as a one or two bedroom option
- R-19 insulation value
- (8) Double sliding aluminum alloy vinyl coated windows w/screen
- Gross weight: 7,700 lbs
- Interior height: 84" - 87"
- LED lighting
- Wood grain style vinyl floor covering
- Durable, water resistant "MGO" floor material
- Folded measurements: 90" W x 100" H x 230" L
- Expanded measurements: 247" W x 100" H x 230" L



662-454-9237

[www.ezlivinhouses.com](http://www.ezlivinhouses.com)

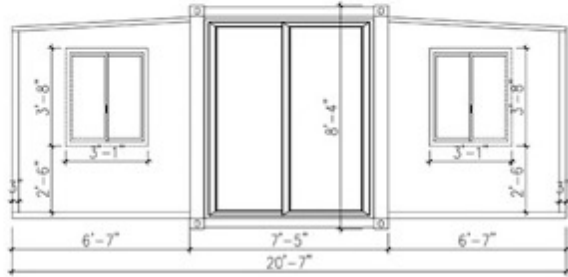


Find us on  
Facebook!

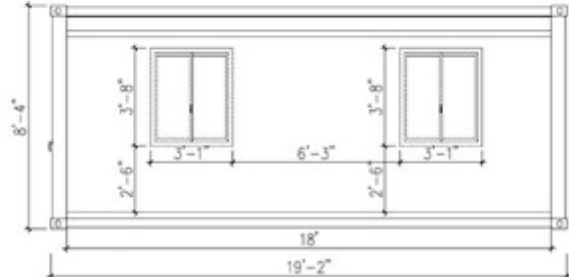


**EZLIVIN**  
EXPANDABLE TINY HOMES

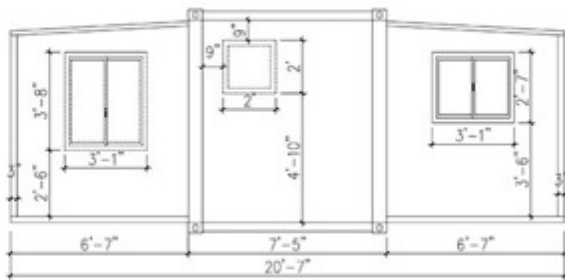
## 20' x 20' Expandable House Expanded Measurements



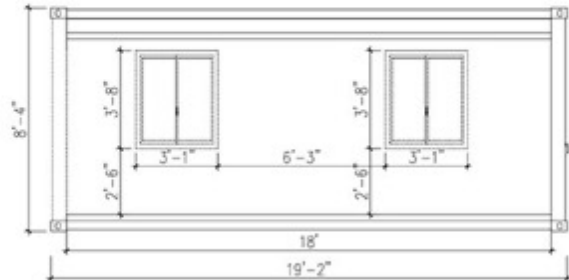
Front View



Right View



Back View



Left View



662-454-9237  
[www.ezlivinhouses.com](http://www.ezlivinhouses.com)

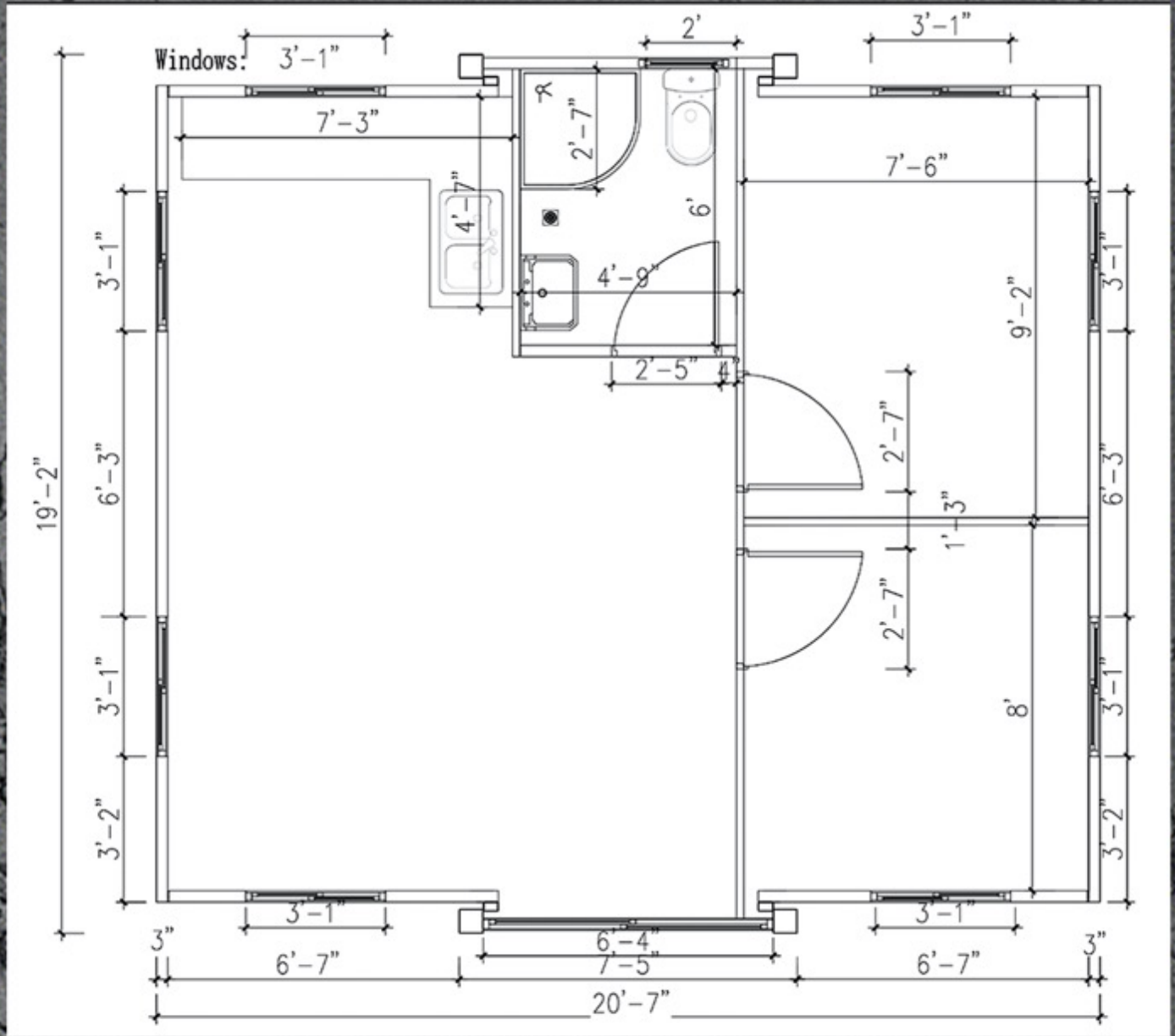


Find us on  
Facebook!



**EZLIVIN**  
EXPANDABLE TINY HOMES

## House Dimensions (in inches)



**WOOD**  
SALES COMPANY, INC.  
KING OF SURPLUS MERCHANDISE

662-454-9237  
[www.ezlivinhouses.com](http://www.ezlivinhouses.com)

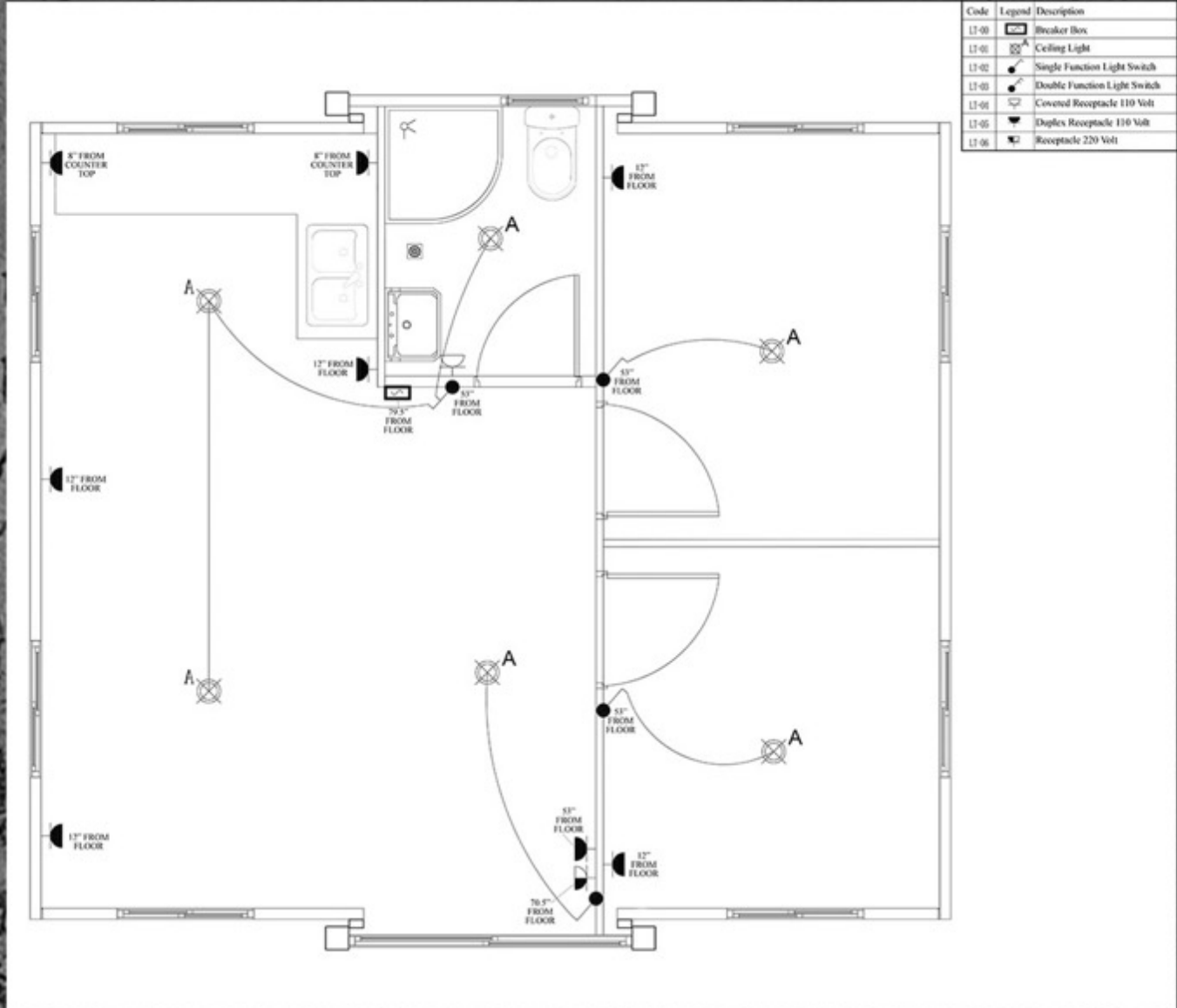


Find us on  
Facebook!



**EZLIVIN**  
EXPANDABLE TINY HOMES

## Electrical Components



Code	Legend	Description
17-01		Breaker Box
17-01		Ceiling Light
17-02		Single Function Light Switch
17-03		Double Function Light Switch
17-04		Covered Receptacle 110 Volt
17-05		Duplex Receptacle 110 Volt
17-06		Receptacle 220 Volt



662-454-9237  
www.ezlivinhouses.com



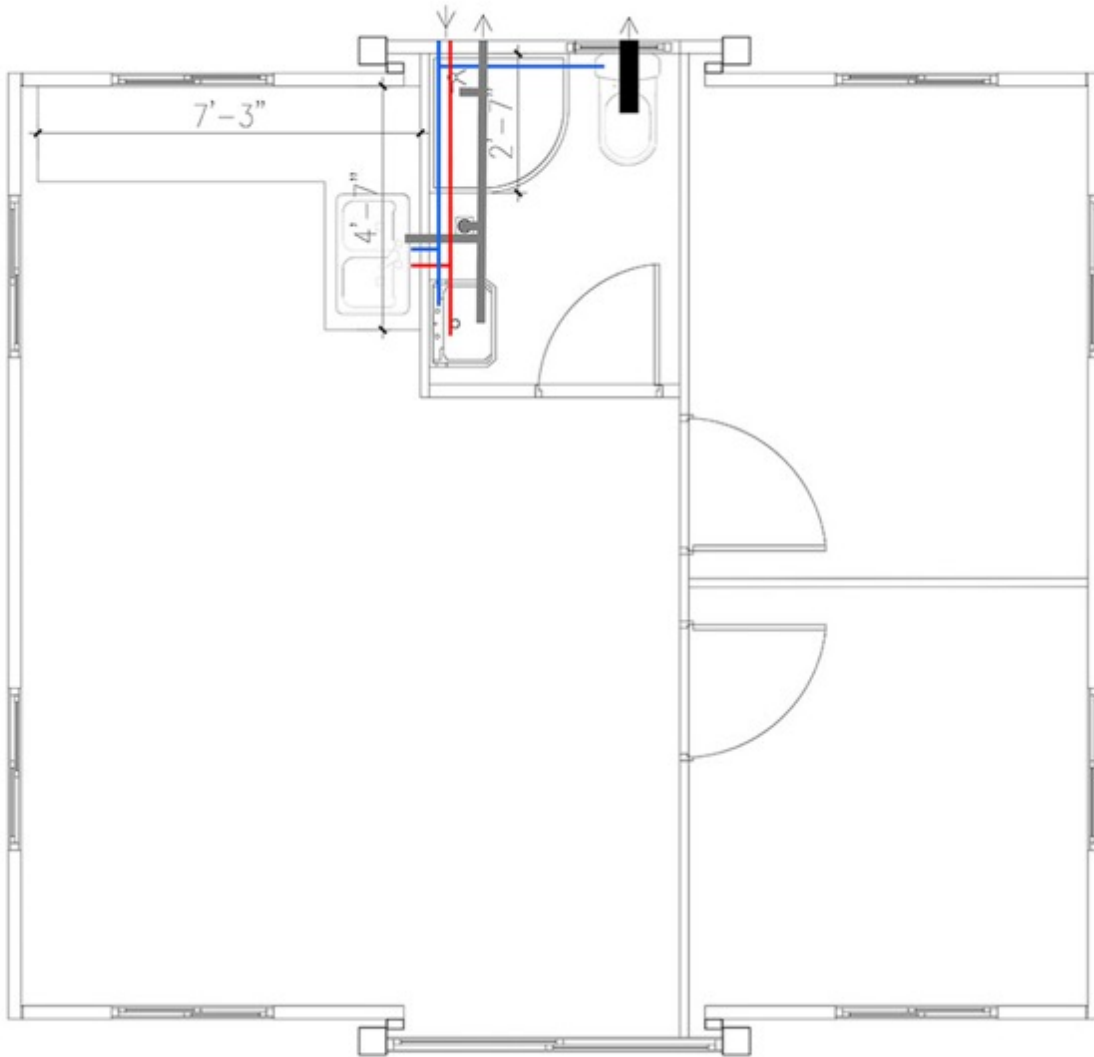
Find us on  
Facebook!



**EZLIVIN**  
EXPANDABLE TINY HOMES

## Pipes & Drains

Legend	Description
Blue	Cold Water
Red	Hot Water
Grey	Water Drain
Black	Sewer Drain



**WOOD**  
SALES COMPANY, INC.  
KING OF SURPLUS MERCHANDISE

662-454-9237  
[www.ezlivinhouses.com](http://www.ezlivinhouses.com)



Find us on  
Facebook!



**EZLIVIN**  
EXPANDABLE TINY HOMES

**EZ-LIVIN'  
20 X 20  
STANDARD HOUSE  
WHITE TRIM  
W/ GRAY EXTERIOR  
WALLS**



**UPGRADED  
RECTANGULAR  
SHOWER 30" X 54"**



**UPGRADED WALL  
MOUNT KITCHEN  
CABINETS**



**ELECTRIC STOVE  
EYE  
BUILT IN COUNTER TOP**



**BLACK OUTER FRAME  
& WINDOW TRIM**



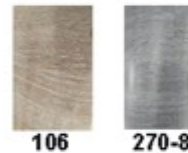
**BLACK FRONT DOOR  
DOUBLE PANEL W/ ALUMINUM  
FRAME**



**COLOR OPTION**



**FLOOR COLOR OPTIONS**



**METAL EXTERIOR  
DECORATIVE PANELS**







**EZ LIVING**  
EXPANDABLE TINY HOMES

Click on the QR codes below to watch the videos on the expandable tiny homes:



EZ Livin 3D Assembly Video (3:57)



EZ Livin Promotional Video (1:00)



EZ Livin Informational Video (3:56)



EZ Livin WSC Video w/ Voiceover (1:11)



662-454-9237

[www.ezlivinhouses.com](http://www.ezlivinhouses.com)



Find us on  
Facebook!