

Consumer Information Packet For



EZLIVIN
EXPANDABLE TINY HOMES

WOOD
SALES COMPANY, INC
KING OF SURPLUS MERCHANDISE

662-454-9237
www.ezlivinhouses.com



Find us on
Facebook!



EZLIVIN
EXPANDABLE TINY HOMES

20' X 20' EXPANDABLE HOUSE



\$22,000 plus delivery

Lead Time:

Approximately 90 Days From Order to Delivery



662-454-9237

www.ezlivinhouses.com



Find us on
Facebook!



EZLIVIN
EXPANDABLE TINY HOMES

- Takes 4-5 people less than one hour to expand to full size
- Takes 2 people approximately 6-8 hours to set the kitchen cabinets, install windows and finalize interior trim
- Easy one day setup from start to finish
- Termite proof, all non-wood construction
- All metal structure is fire and water resistant
- Solid walls with no cavities eliminates habitat for pest to live
- Easily portable, can be quickly disassembled and moved from location to location
- Can be set on most any type of prepared ground - it is recommended to be put on blocks or a concrete slab but it is not required
- Pre-wired & plumbed with only minor connections left to be made
- Exterior walls are solid 2" foam panels with 28 gauge metal for interior and exterior walls (sandwich panels)
- Bathroom area, shower, toilet, sink are completely installed at the factory
- Removeable wall panel allows for the house to be used as a one or two bedroom option
- R-19 insulation value
- (8) Double sliding aluminum alloy vinyl coated windows w/screen
- Gross weight: 7,700 lbs
- Interior height: 84" - 87"
- LED lighting
- Wood grain style vinyl floor covering
- Durable, water resistant "MGO" floor material
- Folded measurements: 90" W x 100" H x 230" L
- Expanded measurements: 247" W x 100" H x 230" L

WOOD
SALES COMPANY, INC
KING OF SURPLUS MERCHANDISE

662-454-9237

www.ezlivinhouses.com

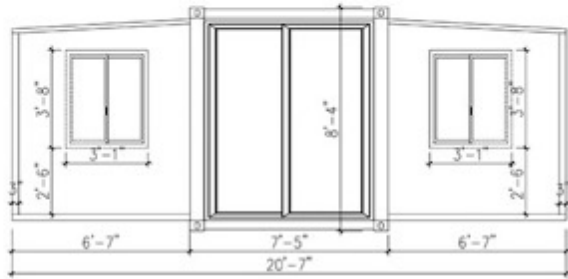


Find us on
Facebook!

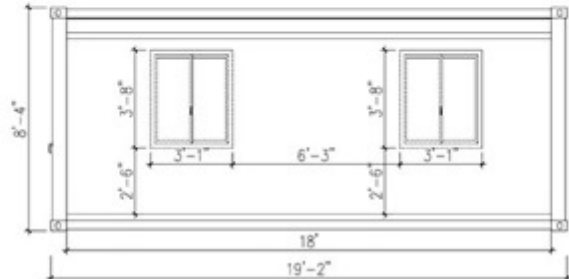


EZLIVIN
EXPANDABLE TINY HOMES

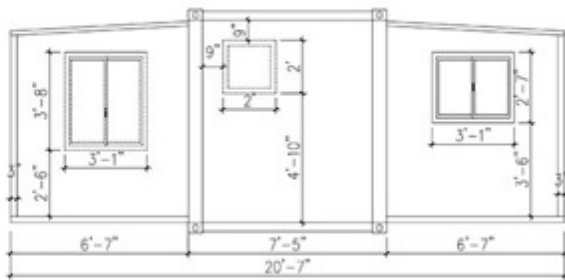
20' x 20' Expandable House Expanded Measurements



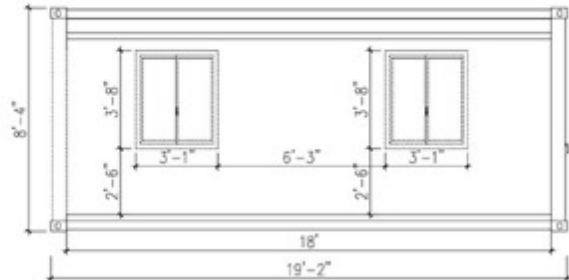
Front View



Right View



Back View



Left View



662-454-9237
www.ezlivinhouses.com

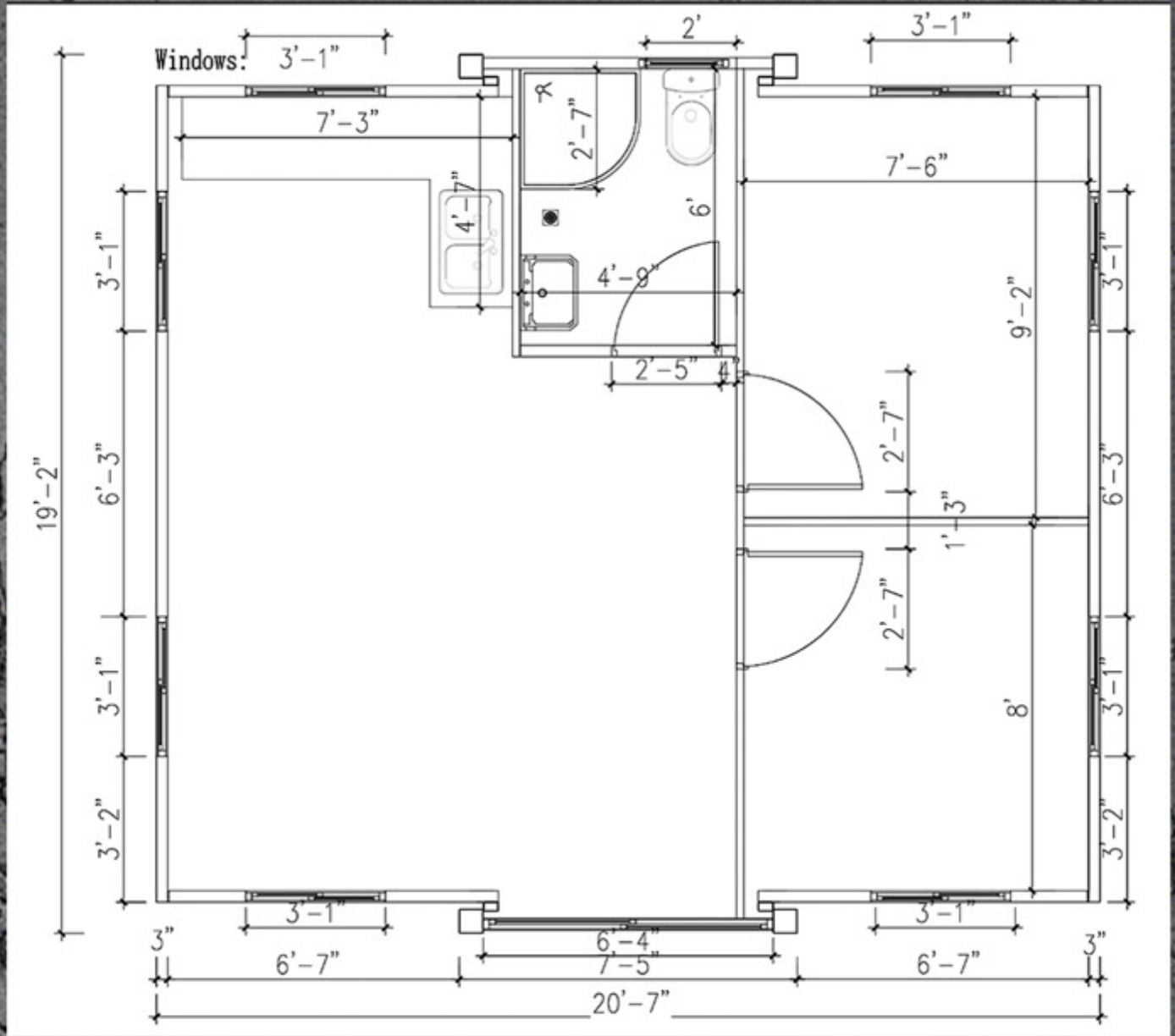


Find us on
Facebook!



EZLIVIN
EXPANDABLE TINY HOMES

House Dimensions (in inches)



WOOD
SALES COMPANY, INC.
KING OF SURPLUS MERCHANDISE

662-454-9237
www.ezlivinhouses.com

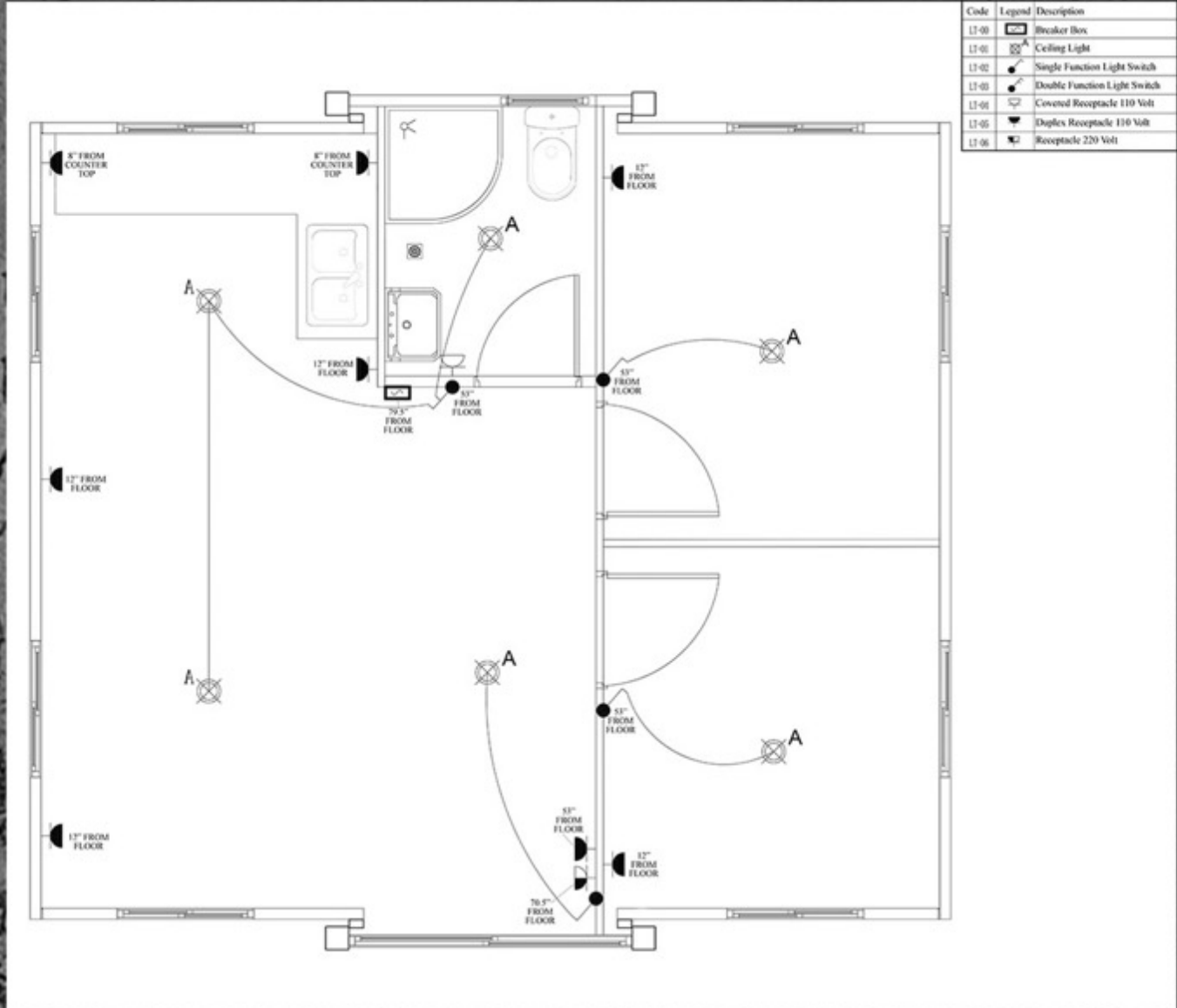


Find us on
Facebook!



EZLIVIN
EXPANDABLE TINY HOMES

Electrical Components



Code	Legend	Description
17-01		Breaker Box
17-01		Ceiling Light
17-02		Single Function Light Switch
17-03		Double Function Light Switch
17-04		Covered Receptacle 110 Volt
17-05		Duplex Receptacle 110 Volt
17-06		Receptacle 220 Volt



662-454-9237
www.ezlivinhouses.com



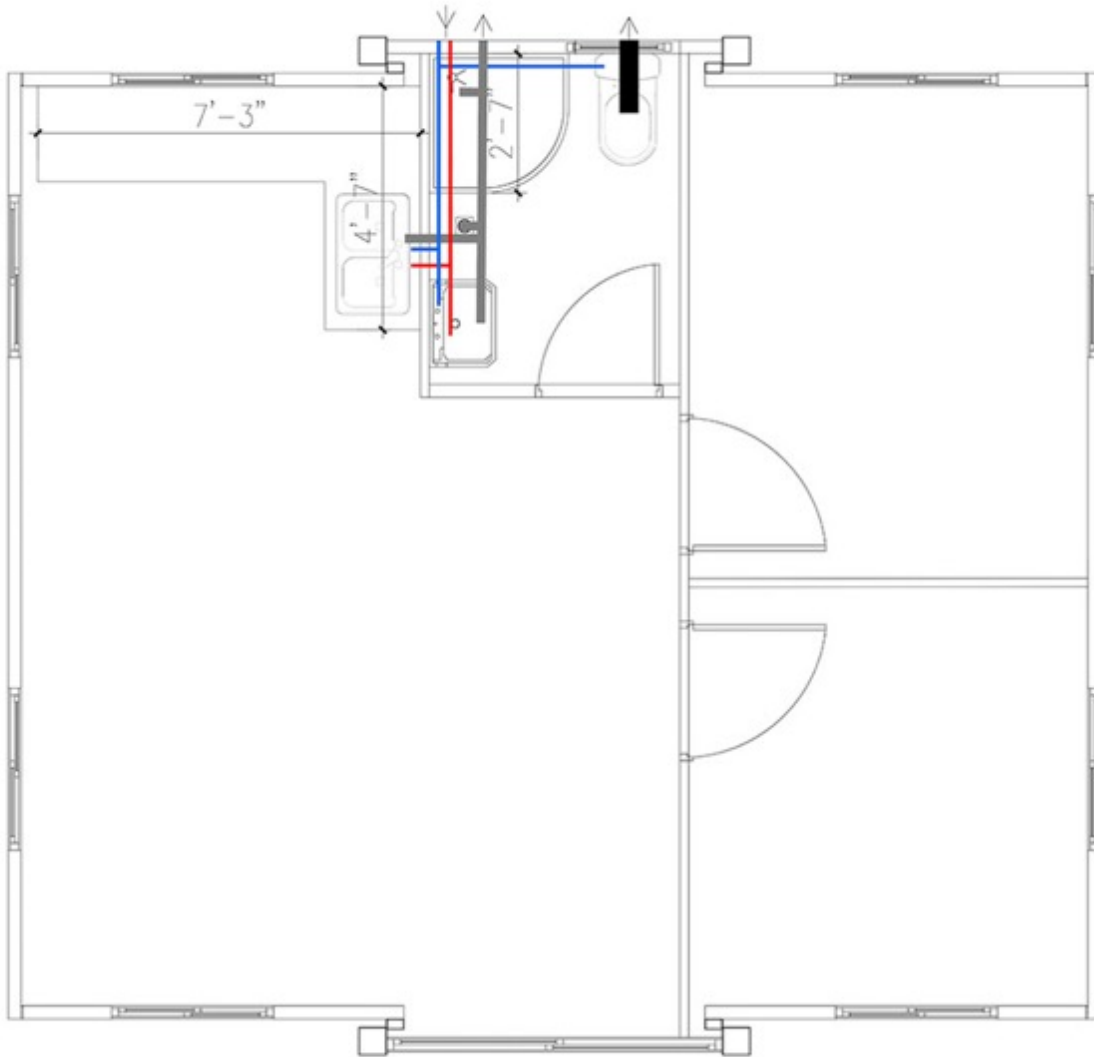
Find us on
Facebook!



EZLIVIN
EXPANDABLE TINY HOMES

Pipes & Drains

Legend	Description
Blue	Cold Water
Red	Hot Water
Grey	Water Drain
Black	Sewer Drain



WOOD
SALES COMPANY, INC.
KING OF SURPLUS MERCHANDISE

662-454-9237
www.ezlivinhouses.com



Find us on
Facebook!



EZ-LIVIN
EXPANDABLE TINY HOMES

EZ-LIVIN'
20 X 20
STANDARD HOUSE
WHITE TRIM
W/ GRAY EXTERIOR
WALLS



\$22,000.00

**UPGRADED
RECTANGULAR
SHOWER 30" X 54"**



\$525.00

**UPGRADED WALL
MOUNT KITCHEN
CABINETS**



\$525.00

**ELECTRIC STOVE
EYE
BUILT IN COUNTER TOP**



\$230.00

**BLACK OUTER FRAME
& WINDOW TRIM**



\$250.00

**BLACK FRONT DOOR
DOUBLE PANEL W/ ALUMINUM
FRAME**



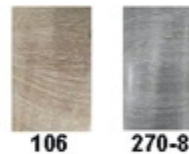
\$525.00

COLOR OPTION



\$0

FLOOR COLOR OPTIONS



\$0

**METAL EXTERIOR
DECORATIVE PANELS**



\$1,750.00



EZ LIVING
EXPANDABLE TINY HOMES

Click on the QR codes below to watch the videos on the expandable tiny homes:



EZ Livin 3D Assembly Video (3:57)



EZ Livin Promotional Video (1:00)



EZ Livin Informational Video (3:56)



EZ Livin WSC Video w/ Voiceover (1:11)



662-454-9237

www.ezlivinhouses.com



Find us on
Facebook!