

11279 US Route 50, Dillsboro, Dearborn County, Indiana, United States, 47018



Property Summary

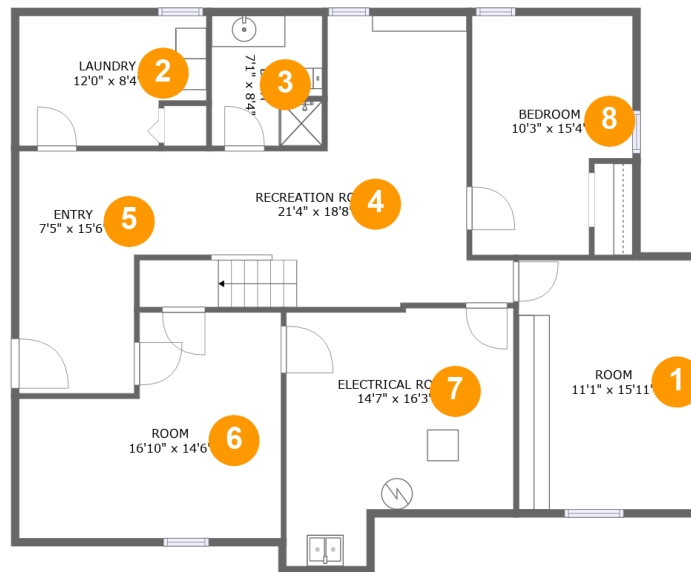
1 garages **5** bedrooms **3** bathrooms **0** half baths

3 floors

3,474 Gross Living Area sqft

4,622 total sqft

11279 US Route 50, Dillsboro, Dearborn County, Indiana, United States, 47018



Room Dimensions

Floor 1

Total sqft: 1436

Living area: 1221

#	Room name	Dimensions	Area (sqft)	Counted as Living Area
1	Room	11'1" x 15'11"	177 sq. ft	Yes
2	Laundry	12'0" x 8'4"	91 sq. ft	Yes
3	Bath	7'1" x 8'4"	58 sq. ft	Yes
4	Recreation Room	21'4" x 18'8"	295 sq. ft	Yes
5	Entry	7'5" x 15'6"	115 sq. ft	Yes
6	Room	16'10" x 14'6"	201 sq. ft	Yes
7	Electrical Room	14'7" x 16'3"	205 sq. ft	No
8	Bedroom	10'3" x 15'4"	141 sq. ft	Yes

11279 US Route 50, Dillsboro, Dearborn County, Indiana, United States, 47018



Room Dimensions

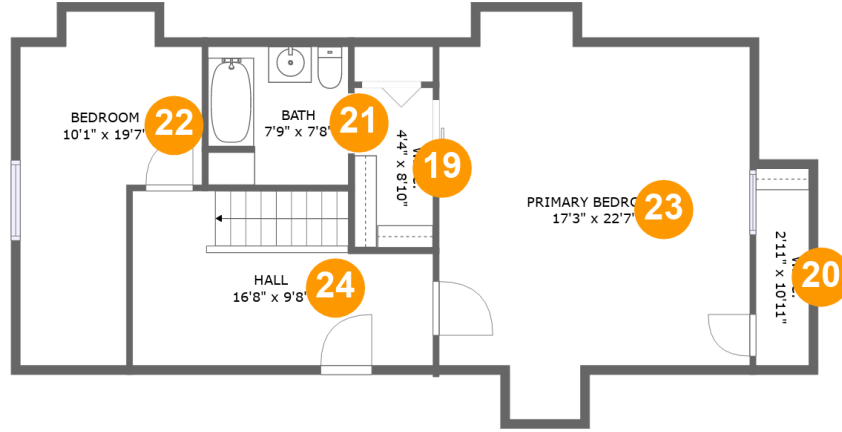
Floor 2

Total sqft: 2335

Living area: 1469

#	Room name	Dimensions	Area (sqft)	Counted as Living Area
9	Kitchen	9'8" x 12'11"	124 sq. ft	Yes
10	Bedroom	13'6" x 11'7"	157 sq. ft	Yes
11	Bath	7'3" x 9'0"	52 sq. ft	Yes
12	Screened Porch	20'11" x 9'10"	206 sq. ft	No
13	Primary Bedroom	12'5" x 15'4"	191 sq. ft	Yes
14	Hall	17'8" x 6'0"	71 sq. ft	Yes
15	Breakfast Nook	9'8" x 10'6"	102 sq. ft	Yes
16	Garage	26'0" x 22'1"	575 sq. ft	No
17	Living Room	22'1" x 16'0"	365 sq. ft	Yes
18	Dining Room	11'4" x 14'6"	164 sq. ft	Yes

11279 US Route 50, Dillsboro, Dearborn County, Indiana, United States, 47018



Room Dimensions

Floor 3

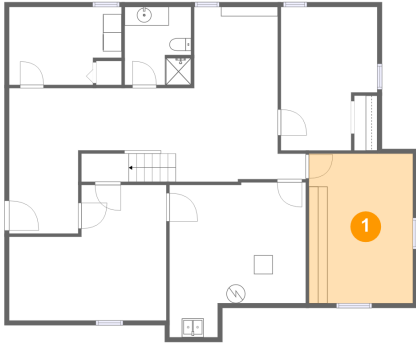
Total sqft: 851

Living area: 784

#	Room name	Dimensions	Area (sqft)	Counted as Living Area
19	W.i.c.	4'4" x 8'10"	39 sq. ft	Yes
20	W.i.c.	2'11" x 10'11"	10 sq. ft	Yes
21	Bath	7'9" x 7'8"	59 sq. ft	Yes
22	Bedroom	10'1" x 19'7"	141 sq. ft	Yes
23	Primary Bedroom	17'3" x 22'7"	304 sq. ft	Yes
24	Hall	16'8" x 9'8"	145 sq. ft	Yes

11279 US Route 50, Dillsboro, Dearborn County, Indiana, United States, 47018

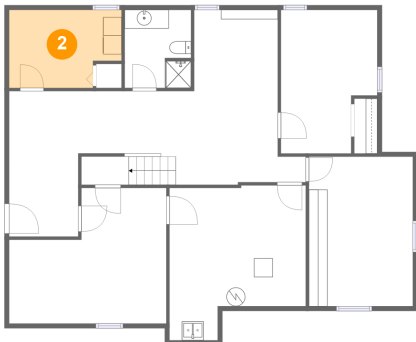
1 Floor 1 - Room



Dimensions: 11'1" x 15'11"
Area: 177 sq. ft
Counted as Living Area:
Yes

Heated: Yes
Finished: Yes
Enclosed: Yes
Contiguous:
Yes
Permitted: Yes
Wet Space: No
Addition: No
Conversion: No

2 Floor 1 - Laundry

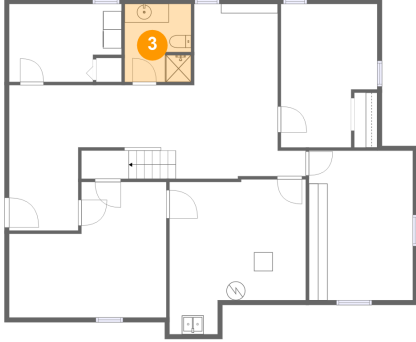


Dimensions: 12'0" x 8'4"
Area: 91 sq. ft
Counted as Living Area:
Yes

Heated: Yes
Finished: Yes
Enclosed: Yes
Contiguous:
Yes
Permitted: Yes
Wet Space: No
Addition: No
Conversion: No

**11279 US Route 50, Dillsboro, Dearborn County,
Indiana, United States, 47018**

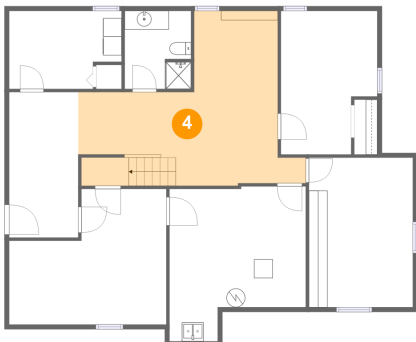
3 Floor 1 - Bath



Dimensions: 7'1" x 8'4"
Area: 58 sq. ft
Counted as Living Area:
Yes

Heated: Yes
Finished: Yes
Enclosed: Yes
Contiguous:
Yes
Permitted: Yes
Wet Space: Yes
Addition: No
Conversion: No

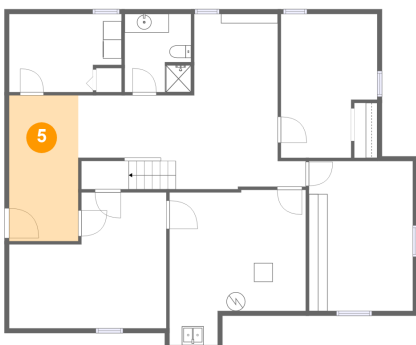
4 Floor 1 - Recreation Room



Dimensions: 21'4" x 18'8"
Area: 295 sq. ft
Counted as Living Area:
Yes

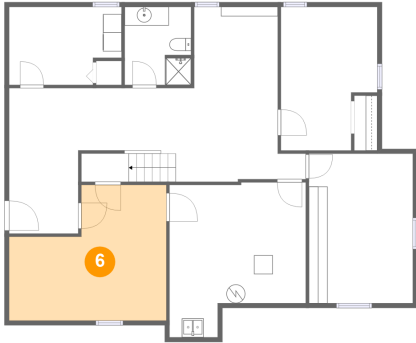
Heated: Yes
Finished: Yes
Enclosed: Yes
Contiguous:
Yes
Permitted: Yes
Wet Space: No
Addition: No
Conversion: No

5 Floor 1 - Entry



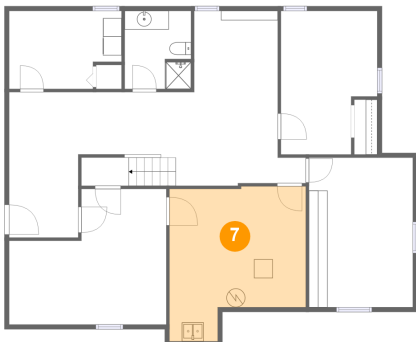
Dimensions: 7'5" x 15'6"
Area: 115 sq. ft
Counted as Living Area:
Yes

Heated: Yes
Finished: Yes
Enclosed: Yes
Contiguous:
Yes
Permitted: Yes
Wet Space: No
Addition: No
Conversion: No

**11279 US Route 50, Dillsboro, Dearborn County,
Indiana, United States, 47018****6 Floor 1 - Room**

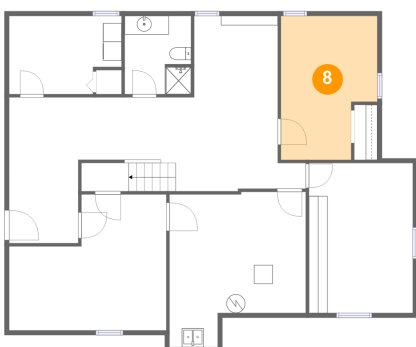
Dimensions: 16'10" x 14'6"
Area: 201 sq. ft
Counted as Living Area:
Yes

Heated: Yes
Finished: Yes
Enclosed: Yes
Contiguous:
Yes
Permitted: Yes
Wet Space: No
Addition: No
Conversion: No

7 Floor 1 - Electrical Room

Dimensions: 14'7" x 16'3"
Area: 205 sq. ft
Counted as Living Area: No

Heated: No
Finished: Yes
Enclosed: Yes
Contiguous: Yes
Permitted: Yes
Wet Space: No
Addition: No
Conversion: No

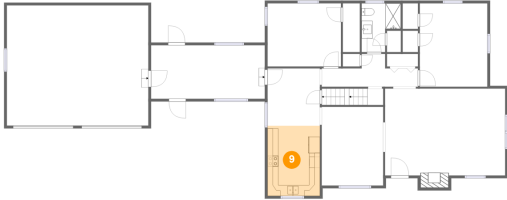
8 Floor 1 - Bedroom

Dimensions: 10'3" x 15'4"
Area: 141 sq. ft
Counted as Living Area:
Yes

Heated: Yes
Finished: Yes
Enclosed: Yes
Contiguous:
Yes
Permitted: Yes
Wet Space: No
Addition: No
Conversion: No

11279 US Route 50, Dillsboro, Dearborn County, Indiana, United States, 47018

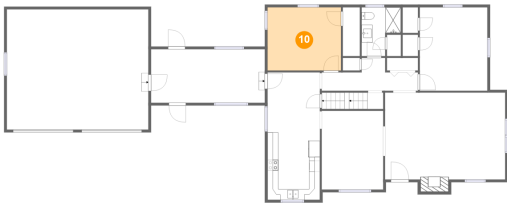
9 Floor 2 - Kitchen



Dimensions: 9'8" x 12'11"
Area: 124 sq. ft
Counted as Living Area:
Yes

Heated: Yes
Finished: Yes
Enclosed: Yes
Contiguous:
Yes
Permitted: Yes
Wet Space: No
Addition: No
Conversion: No

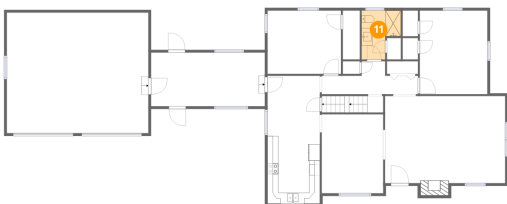
10 Floor 2 - Bedroom



Dimensions: 13'6" x 11'7"
Area: 157 sq. ft
Counted as Living Area:
Yes

Heated: Yes
Finished: Yes
Enclosed: Yes
Contiguous:
Yes
Permitted: Yes
Wet Space: No
Addition: No
Conversion: No

11 Floor 2 - Bath

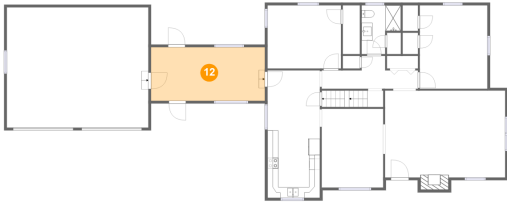


Dimensions: 7'3" x 9'0"
Area: 52 sq. ft
Counted as Living Area:
Yes

Heated: Yes
Finished: Yes
Enclosed: Yes
Contiguous:
Yes
Permitted: Yes
Wet Space: Yes
Addition: No
Conversion: No

11279 US Route 50, Dillsboro, Dearborn County, Indiana, United States, 47018

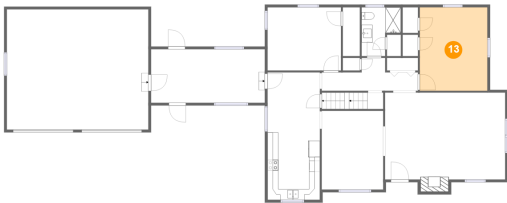
12 Floor 2 - Screened Porch



Dimensions: 20'11" x 9'10"
Area: 206 sq. ft
Counted as Living Area: No

Heated: No
Finished: Yes
Enclosed: Yes
Contiguous: Yes
Permitted: Yes
Wet Space: No
Addition: No
Conversion: No

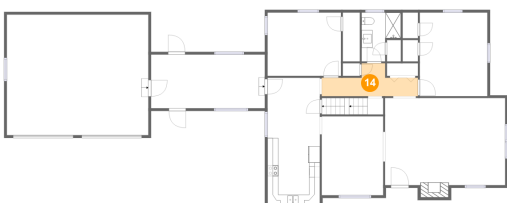
13 Floor 2 - Primary Bedroom



Dimensions: 12'5" x 15'4"
Area: 191 sq. ft
Counted as Living Area: Yes

Heated: Yes
Finished: Yes
Enclosed: Yes
Contiguous: Yes
Permitted: Yes
Wet Space: No
Addition: No
Conversion: No

14 Floor 2 - Hall

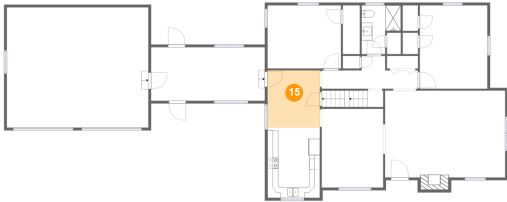


Dimensions: 17'8" x 6'0"
Area: 71 sq. ft
Counted as Living Area: Yes

Heated: Yes
Finished: Yes
Enclosed: Yes
Contiguous: Yes
Permitted: Yes
Wet Space: No
Addition: No
Conversion: No

11279 US Route 50, Dillsboro, Dearborn County, Indiana, United States, 47018

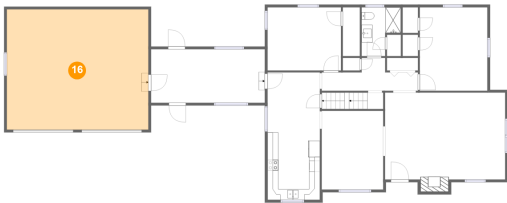
15 Floor 2 - Breakfast Nook



Dimensions: 9'8" x 10'6"
Area: 102 sq. ft
Counted as Living Area:
Yes

Heated: Yes
Finished: Yes
Enclosed: Yes
Contiguous:
Yes
Permitted: Yes
Wet Space: No
Addition: No
Conversion: No

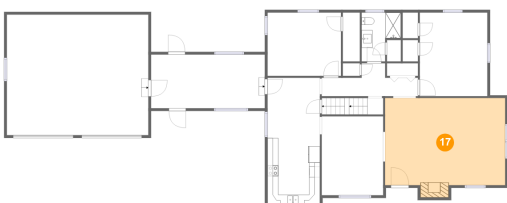
16 Floor 2 - Garage



Dimensions: 26'0" x 22'1"
Area: 575 sq. ft
Counted as Living Area: No

Heated: No
Finished: No
Enclosed: Yes
Contiguous: Yes
Permitted: Yes
Wet Space: No
Addition: No
Conversion: No

17 Floor 2 - Living Room

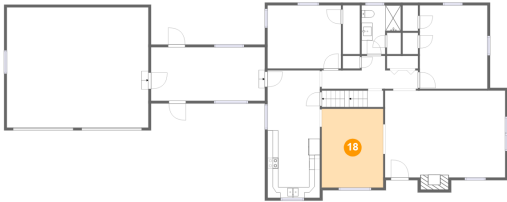


Dimensions: 22'1" x 16'0"
Area: 365 sq. ft
Counted as Living Area:
Yes

Heated: Yes
Finished: Yes
Enclosed: Yes
Contiguous:
Yes
Permitted: Yes
Wet Space: No
Addition: No
Conversion: No

11279 US Route 50, Dillsboro, Dearborn County, Indiana, United States, 47018

18 Floor 2 - Dining Room



Dimensions: 11'4" x 14'6"
Area: 164 sq. ft
Counted as Living Area:
Yes

Heated: Yes
Finished: Yes
Enclosed: Yes
Contiguous:
Yes
Permitted: Yes
Wet Space: No
Addition: No
Conversion: No

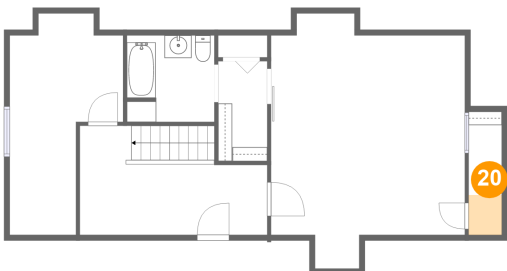
19 Floor 3 - W.i.c.



Dimensions: 4'4" x 8'10"
Area: 39 sq. ft
Counted as Living Area:
Yes

Heated: Yes
Finished: Yes
Enclosed: Yes
Contiguous:
Yes
Permitted: Yes
Wet Space: No
Addition: No
Conversion: No

20 Floor 3 - W.i.c.

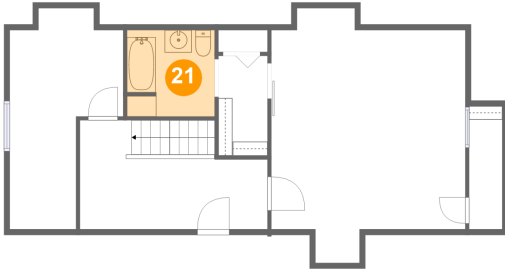


Dimensions: 2'11" x 10'11"
Area: 10 sq. ft
Counted as Living Area:
Yes

Heated: Yes
Finished: Yes
Enclosed: Yes
Contiguous:
Yes
Permitted: Yes
Wet Space: No
Addition: No
Conversion: No

**11279 US Route 50, Dillsboro, Dearborn County,
Indiana, United States, 47018**

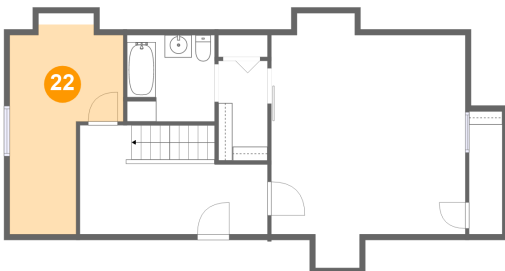
21 Floor 3 - Bath



Dimensions: 7'9" x 7'8"
Area: 59 sq. ft
Counted as Living Area:
Yes

Heated: Yes
Finished: Yes
Enclosed: Yes
Contiguous:
Yes
Permitted: Yes
Wet Space: Yes
Addition: No
Conversion: No

22 Floor 3 - Bedroom



Dimensions: 10'1" x 19'7"
Area: 141 sq. ft
Counted as Living Area:
Yes

Heated: Yes
Finished: Yes
Enclosed: Yes
Contiguous:
Yes
Permitted: Yes
Wet Space: No
Addition: No
Conversion: No

23 Floor 3 - Primary Bedroom

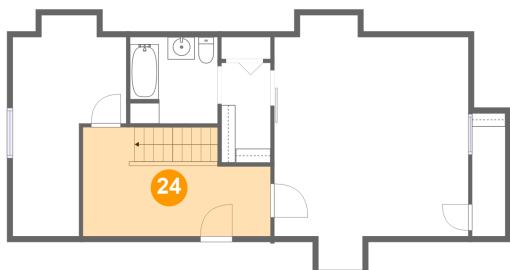


Dimensions: 17'3" x 22'7"
Area: 304 sq. ft
Counted as Living Area:
Yes

Heated: Yes
Finished: Yes
Enclosed: Yes
Contiguous:
Yes
Permitted: Yes
Wet Space: No
Addition: No
Conversion: No

**11279 US Route 50, Dillsboro, Dearborn County,
Indiana, United States, 47018**

24 Floor 3 - Hall



Dimensions: 16'8" x 9'8"
Area: 145 sq. ft
Counted as Living Area:
Yes

Heated: Yes
Finished: Yes
Enclosed: Yes
Contiguous:
Yes
Permitted: Yes
Wet Space: No
Addition: No
Conversion: No