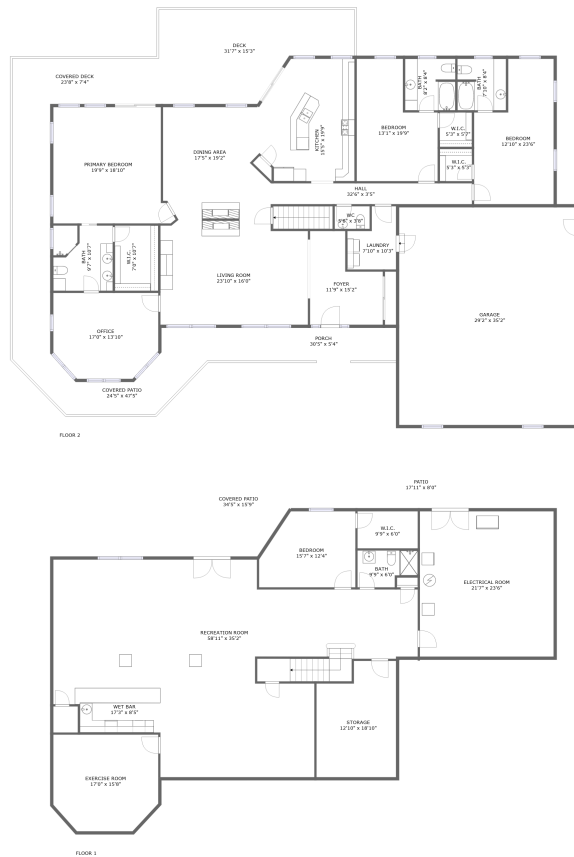



1815 Boardwalk Dr, Bright, Lawrenceburg, Dearborn County, Indiana, United States, 47025



Property summary


 **1** Garages

 **4** Bedrooms

 **4** Bathrooms

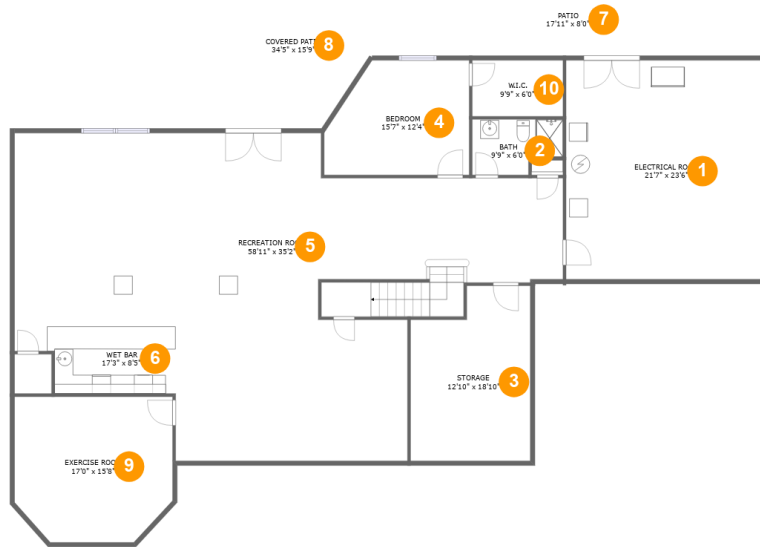
 **1** Half baths

 **2** Floors

 **5,682**
Gross living
area sqft

 **8,726**
Total sqft

**1815 Boardwalk Dr, Bright, Lawrenceburg,
Dearborn County, Indiana, United States, 47025**



Room dimensions

Floor 1

Total sqft: 3532

Living area: 2723

#		Dimensions	sqft	Counted as living area
1	Room	21'7" x 23'6"	508 sq. ft	Yes
2	Bath	9'9" x 6'0"	51 sq. ft	Yes
3	Storage	12'10" x 18'10"	220 sq. ft	No
4	Bedroom	15'7" x 12'4"	172 sq. ft	Yes
5	Recreation Room	58'11" x 35'2"	1368 sq. ft	Yes
6	Bar	17'3" x 8'5"	126 sq. ft	Yes
7	Outdoor	17'11" x 8'0"	144 sq. ft	No
8	Outdoor	34'5" x 15'9"	429 sq. ft	No
9	Exercise Room	17'0" x 15'8"	248 sq. ft	Yes
10	Cl	9'9" x 6'0"	58 sq. ft	Yes

**1815 Boardwalk Dr, Bright, Lawrenceburg,
Dearborn County, Indiana, United States, 47025**



Room dimensions

Floor 2

Total sqft: 5194

Living area: 2959

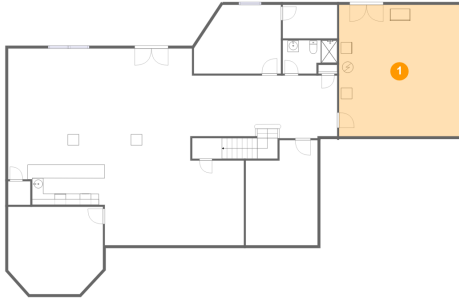
#		Dimensions	sqft	Counted as living area
11	Hall	32'6" x 3'5"	110 sq. ft	Yes
12	Cl	7'0" x 10'7"	74 sq. ft	Yes
13	Garage	29'2" x 35'2"	1026 sq. ft	No
14	Outdoor	31'7" x 15'3"	381 sq. ft	No
15	Cl	5'3" x 5'3"	27 sq. ft	Yes
16	Dining Room	17'5" x 19'2"	303 sq. ft	Yes
17	Utility	7'10" x 10'3"	65 sq. ft	Yes
18	Bedroom	19'9" x 18'10"	333 sq. ft	Yes
19	Bath	9'7" x 10'7"	99 sq. ft	Yes
20	Outdoor	30'5" x 5'4"	161 sq. ft	No
21	Living Room	23'10" x 16'0"	377 sq. ft	Yes

**1815 Boardwalk Dr, Bright, Lawrenceburg,
Dearborn County, Indiana, United States, 47025**

#		Dimensions	sqft	Counted as living area
22	Office	17'0" x 13'10"	218 sq. ft	Yes
23	Bedroom	13'1" x 19'9"	210 sq. ft	Yes
24	Outdoor	23'8" x 7'4"	175 sq. ft	No
25	Bedroom	12'10" x 23'6"	254 sq. ft	Yes
26	Cl	5'3" x 5'7"	29 sq. ft	Yes
27	Bath	7'10" x 8'4"	65 sq. ft	Yes
28	Outdoor	24'5" x 47'5"	450 sq. ft	No
29	Bath	8'2" x 8'4"	67 sq. ft	Yes
30	Entry	11'9" x 15'2"	139 sq. ft	Yes
31	Bath	5'8" x 3'8"	21 sq. ft	Yes
32	Kitchen	15'5" x 19'9"	277 sq. ft	Yes

1815 Boardwalk Dr, Bright, Lawrenceburg, Dearborn County, Indiana, United States, 47025

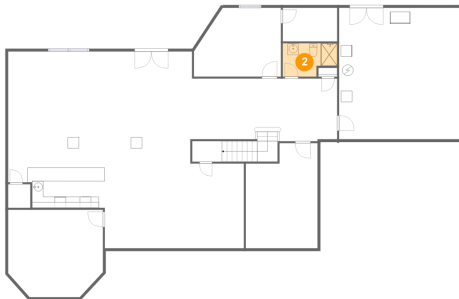
1 Floor 1 - Room



Dimensions: 21'7" x 23'6"
Area: 508 sq. ft
Counted as living area: Yes

Heated: Yes
Finished: Yes
Enclosed: Yes
Contiguous: Yes
Permitted: Yes
Wet space: No
Addition: No
Conversion: No

2 Floor 1 - Bath

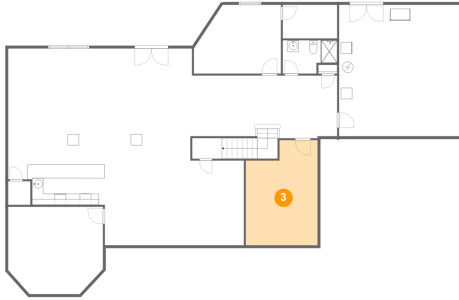


Dimensions: 9'9" x 6'0"
Area: 51 sq. ft
Counted as living area: Yes

Heated: Yes
Finished: Yes
Enclosed: Yes
Contiguous: Yes
Permitted: Yes
Wet space: Yes
Addition: No
Conversion: No

1815 Boardwalk Dr, Bright, Lawrenceburg, Dearborn County, Indiana, United States, 47025

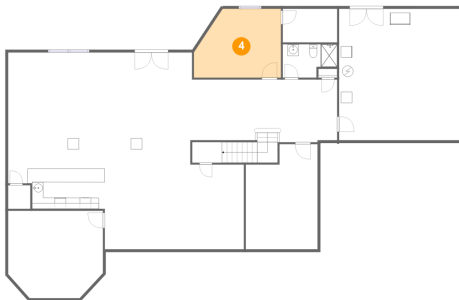
3 Floor 1 - Storage



Dimensions: 12'10" x 18'10"
Area: 220 sq. ft
Counted as living area: No

Heated: Yes
Finished: Yes
Enclosed: No
Contiguous: Yes
Permitted: Yes
Wet space: No
Addition: No
Conversion: No

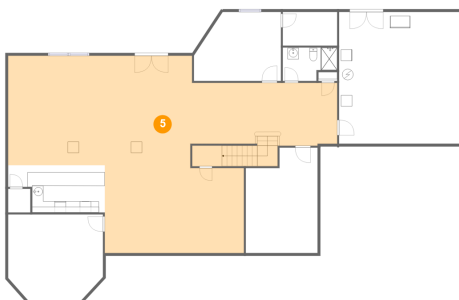
4 Floor 1 - Bedroom



Dimensions: 15'7" x 12'4"
Area: 172 sq. ft
Counted as living area: Yes

Heated: Yes
Finished: Yes
Enclosed: Yes
Contiguous: Yes
Permitted: Yes
Wet space: No
Addition: No
Conversion: No

5 Floor 1 - Recreation Room

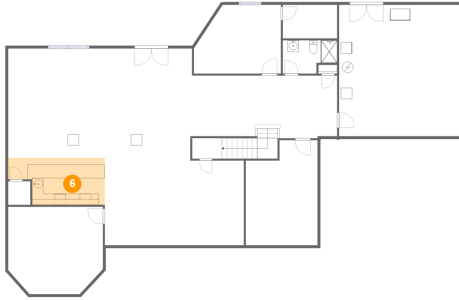


Dimensions: 58'11" x 35'2"
Area: 1368 sq. ft
Counted as living area: Yes

Heated: Yes
Finished: Yes
Enclosed: Yes
Contiguous: Yes
Permitted: Yes
Wet space: No
Addition: No
Conversion: No

1815 Boardwalk Dr, Bright, Lawrenceburg, Dearborn County, Indiana, United States, 47025

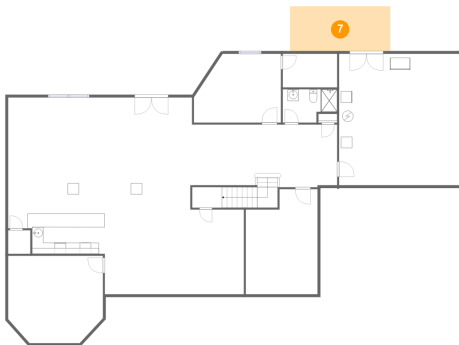
6 Floor 1 - Bar



Dimensions: 17'3" x 8'5"
Area: 126 sq. ft
Counted as living area: Yes

Heated: Yes
Finished: Yes
Enclosed: Yes
Contiguous: Yes
Permitted: Yes
Wet space: No
Addition: No
Conversion: No

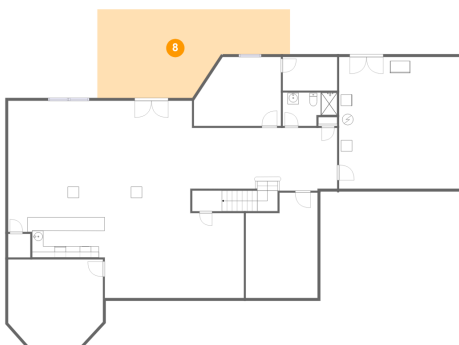
7 Floor 1 - Outdoor



Dimensions: 17'11" x 8'0"
Area: 144 sq. ft
Counted as living area: No

Heated: No
Finished: Yes
Enclosed: No
Contiguous: Yes
Permitted: Yes
Wet space: No
Addition: No
Conversion: No

8 Floor 1 - Outdoor

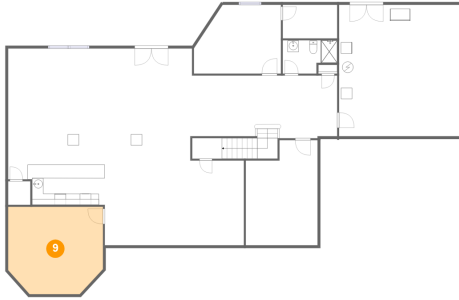


Dimensions: 34'5" x 15'9"
Area: 429 sq. ft
Counted as living area: No

Heated: No
Finished: Yes
Enclosed: No
Contiguous: Yes
Permitted: Yes
Wet space: No
Addition: No
Conversion: No

1815 Boardwalk Dr, Bright, Lawrenceburg, Dearborn County, Indiana, United States, 47025

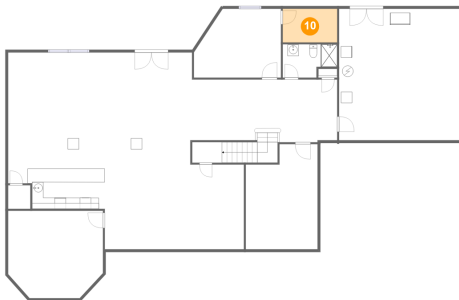
9 Floor 1 - Exercise Room



Dimensions: 17'0" x 15'8"
Area: 248 sq. ft
Counted as living area: Yes

Heated: Yes
Finished: Yes
Enclosed: Yes
Contiguous: Yes
Permitted: Yes
Wet space: No
Addition: No
Conversion: No

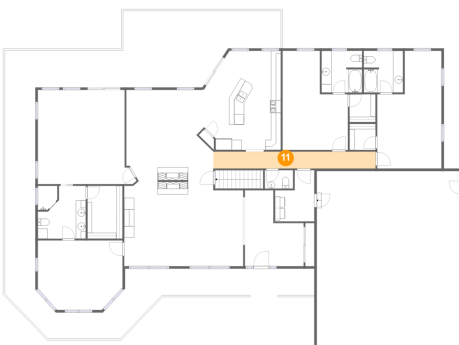
10 Floor 1 - Cl



Dimensions: 9'9" x 6'0"
Area: 58 sq. ft
Counted as living area: Yes

Heated: Yes
Finished: Yes
Enclosed: Yes
Contiguous: Yes
Permitted: Yes
Wet space: No
Addition: No
Conversion: No

11 Floor 2 - Hall



Dimensions: 32'6" x 3'5"
Area: 110 sq. ft
Counted as living area: Yes

Heated: Yes
Finished: Yes
Enclosed: Yes
Contiguous: Yes
Permitted: Yes
Wet space: No
Addition: No
Conversion: No

**1815 Boardwalk Dr, Bright, Lawrenceburg,
Dearborn County, Indiana, United States, 47025**

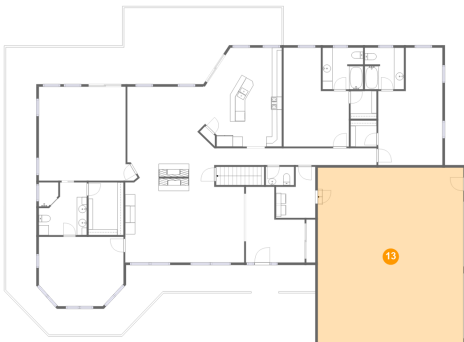
12 Floor 2 - Cl



Dimensions: 7'0" x 10'7"
Area: 74 sq. ft
Counted as living area: Yes

Heated: Yes
Finished: Yes
Enclosed: Yes
Contiguous: Yes
Permitted: Yes
Wet space: No
Addition: No
Conversion: No

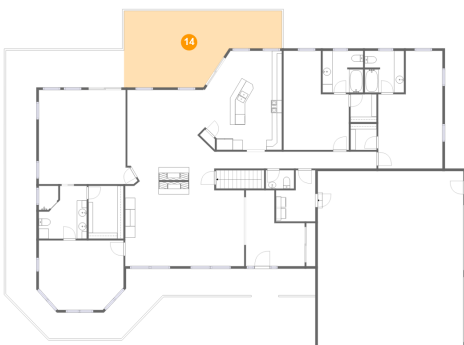
13 Floor 2 - Garage



Dimensions: 29'2" x 35'2"
Area: 1026 sq. ft
Counted as living area: No

Heated: Yes
Finished: No
Enclosed: Yes
Contiguous: Yes
Permitted: Yes
Wet space: No
Addition: No
Conversion: No

14 Floor 2 - Outdoor



Dimensions: 31'7" x 15'3"
Area: 381 sq. ft
Counted as living area: No

Heated: No
Finished: Yes
Enclosed: No
Contiguous: Yes
Permitted: Yes
Wet space: No
Addition: No
Conversion: No

1815 Boardwalk Dr, Bright, Lawrenceburg, Dearborn County, Indiana, United States, 47025

15 Floor 2 - Cl



Dimensions: 5'3" x 5'3"
Area: 27 sq. ft
Counted as living area: Yes

Heated: Yes
Finished: Yes
Enclosed: Yes
Contiguous: Yes
Permitted: Yes
Wet space: No
Addition: No
Conversion: No

16 Floor 2 - Dining Room



Dimensions: 17'5" x 19'2"
Area: 303 sq. ft
Counted as living area: Yes

Heated: Yes
Finished: Yes
Enclosed: Yes
Contiguous: Yes
Permitted: Yes
Wet space: No
Addition: No
Conversion: No

17 Floor 2 - Utility



Dimensions: 7'10" x 10'3"
Area: 65 sq. ft
Counted as living area: Yes

Heated: Yes
Finished: Yes
Enclosed: Yes
Contiguous: Yes
Permitted: Yes
Wet space: No
Addition: No
Conversion: No

**1815 Boardwalk Dr, Bright, Lawrenceburg,
Dearborn County, Indiana, United States, 47025**

18 Floor 2 - Bedroom



Dimensions: 19'9" x 18'10"
Area: 333 sq. ft
Counted as living area: Yes

Heated: Yes
Finished: Yes
Enclosed: Yes
Contiguous: Yes
Permitted: Yes
Wet space: No
Addition: No
Conversion: No

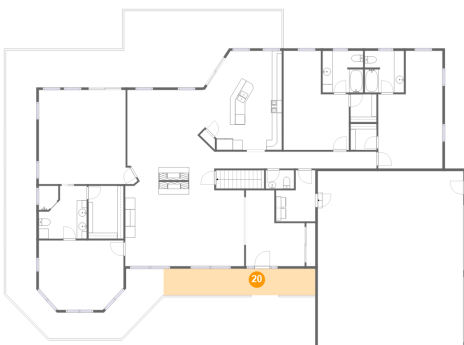
19 Floor 2 - Bath



Dimensions: 9'7" x 10'7"
Area: 99 sq. ft
Counted as living area: Yes

Heated: Yes
Finished: Yes
Enclosed: Yes
Contiguous: Yes
Permitted: Yes
Wet space: Yes
Addition: No
Conversion: No

20 Floor 2 - Outdoor



Dimensions: 30'5" x 5'4"
Area: 161 sq. ft
Counted as living area: No

Heated: No
Finished: Yes
Enclosed: No
Contiguous: Yes
Permitted: Yes
Wet space: No
Addition: No
Conversion: No

**1815 Boardwalk Dr, Bright, Lawrenceburg,
Dearborn County, Indiana, United States, 47025**

21 Floor 2 - Living Room



Dimensions: 23'10" x 16'0"
Area: 377 sq. ft
Counted as living area: Yes

Heated: Yes
Finished: Yes
Enclosed: Yes
Contiguous: Yes
Permitted: Yes
Wet space: No
Addition: No
Conversion: No

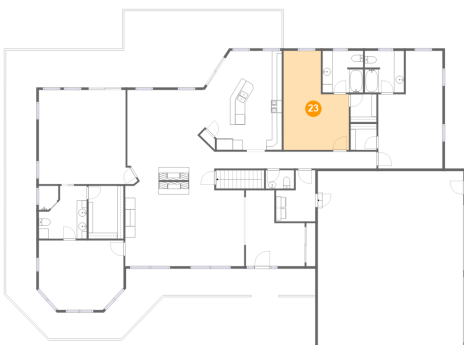
22 Floor 2 - Office



Dimensions: 17'0" x 13'10"
Area: 218 sq. ft
Counted as living area: Yes

Heated: Yes
Finished: Yes
Enclosed: Yes
Contiguous: Yes
Permitted: Yes
Wet space: No
Addition: No
Conversion: No

23 Floor 2 - Bedroom



Dimensions: 13'1" x 19'9"
Area: 210 sq. ft
Counted as living area: Yes

Heated: Yes
Finished: Yes
Enclosed: Yes
Contiguous: Yes
Permitted: Yes
Wet space: No
Addition: No
Conversion: No

1815 Boardwalk Dr, Bright, Lawrenceburg, Dearborn County, Indiana, United States, 47025

24 Floor 2 - Outdoor



Dimensions: 23'8" x 7'4"
Area: 175 sq. ft
Counted as living area: No

Heated: No
Finished: Yes
Enclosed: No
Contiguous: Yes
Permitted: Yes
Wet space: No
Addition: No
Conversion: No

25 Floor 2 - Bedroom



Dimensions: 12'10" x 23'6"
Area: 254 sq. ft
Counted as living area: Yes

Heated: Yes
Finished: Yes
Enclosed: Yes
Contiguous: Yes
Permitted: Yes
Wet space: No
Addition: No
Conversion: No

26 Floor 2 - Cl



Dimensions: 5'3" x 5'7"
Area: 29 sq. ft
Counted as living area: Yes

Heated: Yes
Finished: Yes
Enclosed: Yes
Contiguous: Yes
Permitted: Yes
Wet space: No
Addition: No
Conversion: No

1815 Boardwalk Dr, Bright, Lawrenceburg, Dearborn County, Indiana, United States, 47025

27 Floor 2 - Bath



Dimensions: 7'10" x 8'4"
Area: 65 sq. ft
Counted as living area: Yes

Heated: Yes
Finished: Yes
Enclosed: Yes
Contiguous: Yes
Permitted: Yes
Wet space: Yes
Addition: No
Conversion: No

28 Floor 2 - Outdoor



Dimensions: 24'5" x 47'5"
Area: 450 sq. ft
Counted as living area: No

Heated: No
Finished: Yes
Enclosed: No
Contiguous: Yes
Permitted: Yes
Wet space: No
Addition: No
Conversion: No

29 Floor 2 - Bath



Dimensions: 8'2" x 8'4"
Area: 67 sq. ft
Counted as living area: Yes

Heated: Yes
Finished: Yes
Enclosed: Yes
Contiguous: Yes
Permitted: Yes
Wet space: Yes
Addition: No
Conversion: No

**1815 Boardwalk Dr, Bright, Lawrenceburg,
Dearborn County, Indiana, United States, 47025**

30 Floor 2 - Entry



Dimensions: 11'9" x 15'2"
Area: 139 sq. ft
Counted as living area: Yes

Heated: Yes
Finished: Yes
Enclosed: Yes
Contiguous: Yes
Permitted: Yes
Wet space: No
Addition: No
Conversion: No

31 Floor 2 - Bath



Dimensions: 5'8" x 3'8"
Area: 21 sq. ft
Counted as living area: Yes

Heated: Yes
Finished: Yes
Enclosed: Yes
Contiguous: Yes
Permitted: Yes
Wet space: Yes
Addition: No
Conversion: No

32 Floor 2 - Kitchen



Dimensions: 15'5" x 19'9"
Area: 277 sq. ft
Counted as living area: Yes

Heated: Yes
Finished: Yes
Enclosed: Yes
Contiguous: Yes
Permitted: Yes
Wet space: No
Addition: No
Conversion: No