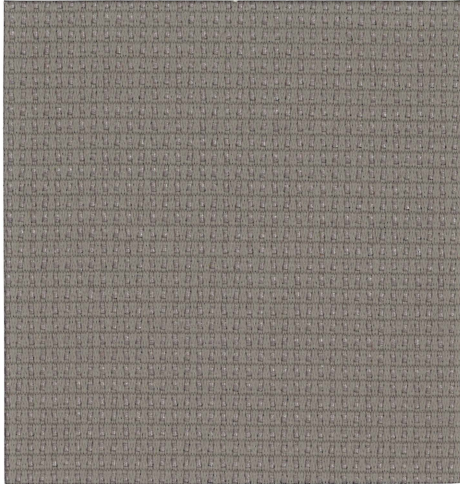
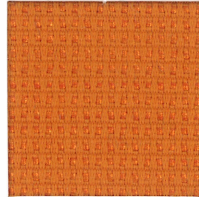


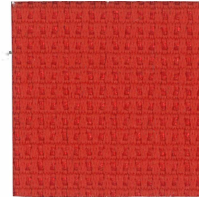
To the Point 4732



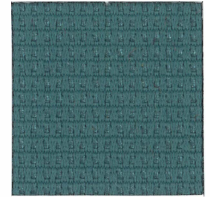
Gravel
1413



Marigold
1407



Amaryllis
1408



Bluegrass
1403



Azalea
1410



Currant
1411



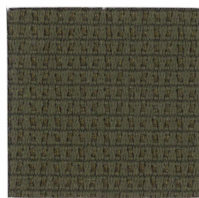
Cobalt
1402



Almond
1414



Moss
1404



Cattail
1417



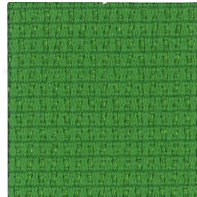
Elderberry
1409



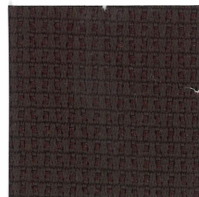
Indigo
1401



Kiwi
1405



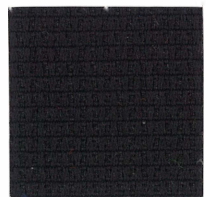
Parrot
1406



Coffee
1416



Cinder
1412



Ebony
1415



To the Point 4732

Specifications

| | |
|-----------|---|
| Content | 44% post-consumer recycled polyester 56% polyester |
| Weight | 12.4 ± 1.0 oz./lin. yd. |
| Width | 54" min. useable |
| Repeat | .15" vertical .125" horizontal |
| Backing | acrylic backcoating |
| Treatment | stain repellent |

Cleaning Code

Standard Care Label W-S. Clean with water based cleaning agents, foam or pure, water free solvents. Vacuuming or light brushing is recommended to prevent dust and soil buildup.

Miscellaneous


Proudly woven in North America supporting our local communities.

Application testing of this product is recommended. Colors may vary between dye lots. This is a directional fabric.

Visit guilfordofmaine.com for samples.

Performance

 Colorfastness to Light (AATCC 16.3 Option 3)
Grade 4 min. at 40 hours

 Colorfastness to Crocking (AATCC 8)
Grade 4 min. dry & Grade 3 min. wet

 Breaking Strength (ASTM D5034)
295 lbf warp and 330 lbf fill

Seam Slippage (ASTM D4034)
110 lbf warp and 85 lbf fill

Pilling Resistance (ASTM D3511)
Class 4 min.

 Flammability
**CA Technical Bulletin 117-2013 Section 1
NFPA 260/UFAC Fabric Classification - Class I**

* Abrasion (ASTM D4157)
140,000 double rubs cotton duck

Sustainability



*Certification Marks owned by the Association for Contract Textiles, Inc.