

Big Lake Bass Team

Coaches Meeting

What have you gotten yourself into ...

Lawrence Luoma and Noel Krebs

Wayne Howe – Coaching Director High School

Paul Barker – Coaching Director Juniors

Aaron Jarvi – Tournament Director



Agenda

Coaching Staff

Coaching Expectations

Coaching Goals

Practices

2025 Schedule

Local Lakes – Big/Mitchell, Eagle, Ann and Birch

Coaching Profile

Brag Board / 5lb Club

Smart Phone Apps

Classic Bass Boat Marshall

Tournament Info



Coaching Directors

Junior Coaching Director

Paul Barker

paul.barker@mpnexuslevel.us

612-875-8562



High School Coaching Director

Wayne Howe

wayne_howe77@yahoo.com

612-991-8048



Tournament Director

Aaron Jarvi

aaron.jarvi@gmail.com

763-228-9663



Coaching Expectations

Attending scheduled practices

- Attend at least 2 practices a month
- Mondays and Wednesdays – 5:30 – 8:30pm (Big Lake Lakeside park or alternate location as directed)
 - 30 minutes of on-shore coaching
- In-Person Tournament Teams
 - Boat Captain to schedule time during the week to fish with your team
- Set your availability in SportsEngine app by Thursday the week before practice
 - If you know you will be out for a certain practice, put that in ASAP

Rule of 3 on boat

- Coach + 2 others

Supplies

- Provided by Big Lake Bass Team
 - Big Lake Lakeside Park - Season Pass
 - Fishing Jersey and Hat
 - Discount Codes also available to Coaches – Blackfish, AquaView, Rapala, FishLab, St Croix and Seviin
- Scheels Aluminum Fish Ruler or other approved ruler
 - MNSATT Ruler for High School Boat Captains
 - <http://www.mnbats.org/rules/> - BATS approved Ruler
 - Lund Student Angler Organization approved ruler – www.studentangler.org
- Life Jackets
 - Students will bring their own
- Fire Extinguisher
- Emergency ignition-shutoff device – required to participate in MNSATT virtual and in-person events
- Minimum \$300,000 in boater insurance

Social Media

- Regularly posting to Facebook and Instagram – tagging Big Lake Bass Team and our sponsors
- Encouraging students to post on a regular basis
- Subscribe to our YouTube Channel, Like our page on Facebook and follow us on Instagram

Coaching Goals

Student and Coach Safety is our #1 priority!

Junior practices

- Focus on fundamentals
 - Knot tying
 - Palomar knots and a leader knot (uni to uni, FG, alberto, Albright, etc)
 - Casting
 - Using a bait caster
 - Lures and presentations
- Encourage the use of a daily fishing log
- Develop advanced skills as needed
- Tournament preparation for students attending B.A.T.S.

High School Practices

- Focus on developing advanced skills
 - Knot tying with speed and technique
 - Casting accuracy
 - Lures and presentations based on scenarios
 - Tournament preparation

We talk a lot about tournaments and often post tournament photos, but our focus is on getting kids on the water, NOT TOURNAMENTS!

We are always seeking more volunteers. Once you sign up you are invited to be part of the team! If your time allows, we encourage you to attend the indoor and on-shore practices, volunteer opportunities, events, and more.

There is no commitment. If you can take kids fishing 5 times a week or ONCE A MONTH, we would love for you to join us. You don't have to have a boat. We like to shore fish, teach, and mentor too. Spots available!

We don't need professional guides to take our students out fishing! We just need help getting them on the water and spend time with them.

Our coaches/boat captains come from a wide variety of fishing backgrounds. We help all levels and we have helped many parents, families, coaches get more experienced and better at fishing. Don't worry about your level of expertise.

Focus Elements

Safety

1. Being prepared having all required PPE (Life Jacket, Safety Glasses, ETC)
(In practice we could have them bring backpack with all this gear – would help the younger kids)
2. Communication- Have total count of student on an off lake. Having emergency contact and knowing if any student has any medical conditions such as Diabetes
3. First Aid Kit got few from work in my garage will give out to boat captains. (I've got piles of these at work as well if needed.)
4. Hand out Index cards to get contact info and any information regarding any medical conditions.

Code of conduct

1. Being respectful to teammates, coaches, environment & competitors
2. Being supportive of teammates
3. Helping coach clean out boat at end of practice. (Coaches Discretion)
4. How to behave on a boat. Coaches need to go over boat layout and explain what is expected during on water practice
5. Students should use restroom before entering boat

Rotating kids in front of boat and back of boat

First Year Angler (Youth)

1. Discuss suggested Equipment
2. Bait Caster with braid, Medium heavy fast action rod
3. Spinning Reel- Medium/Medium-light fast action rod, Braid to Fluorocarbon
4. Basic tools needed for tackle box. (pliers and scissors)

Educate student angler about bass Habitat (Large Mouth & Small Mouth)

1. When are Bass Active
2. What do bass feed on
3. Where do bass live
4. Bass Behaviors in general, during different seasons
5. Bass Spawn and Fry guardians

Recommended Tackle for First Year angler

1. Terminal Tackle
2. Jigs and Trailers
3. Spinner baits- plain and trailers
4. Finesse Fishing- Ned, Drop shots, small jigs, & shaky head
5. Top water baits

Handling Fish once they are caught

1. Safely remove hook discuss extra precautions for treble hooks. (Controlling the fish, then the lure. Not the other way)
2. Keep fish out of water as little as possible. Keep fish in net until you are ready to take pictures and measure
3. Pulling fish out of deep water

Understanding Structures

1. Deep Structure
2. Shallow Structure
3. Identifying types of structures:
 - Docks
 - wood
 - grass
 - coon tails
 - rocks
 - wing damn
 - milfoil
 - points
 - weed edges
 - hard vs soft bottoms
 - transitions

Outline for those who are interested in Junior Tournaments

1. Putting baits in the strike zone
2. Being efficient on the water
3. Working as a team to figure out pattern
4. Supporting your partner
5. How to cast from boat. Difference from front and the back of the boat
6. Different styles of casting and when to use them

Understanding Variables

1. Water temperature
2. Water clarity
3. Atmospheric pressure. Major and Minors moon phases
4. Cloudy vs clear skies
5. Fishing pressure
6. Changing water levels
7. Water current
8. Wind

Knots and Line choice

1. Palomar knot
2. Fisherman knot
3. Uni-Uni, Alberto, Albright or FG
4. Line weights
5. Braid
6. Mono
7. Copolymer
8. Fluorocarbon

Actions & Retrievals methods for baits

1. Constant reel
2. Fast then slow Reel
3. Snapping action
4. Constant then pauses
5. Cast and sit
6. Twitching

Advance topics

1. Color of baits
2. Different types of rods and actions
3. Breaking down water
4. When to fish shallow vs deep
5. Advance teamwork
6. How to read topo maps
7. Breaking down a lake and scouting new water
8. Boat electronics general education
9. Boat control and tools to improve boat control

Equipment Recommendations

Bait cast and Spinning Combos - Bass Fishing setup

Casting

- 6'6" to 7'2" medium heavy

Spinning

- 6'6" to 7' medium / medium light

Fishing Backpack with:

- Tackle Kit / Small Boxes
- Pliers/Hook Out
- Sunscreen
- Ball Cap
- Sunglasses - Safety (Polarized)
- Life Jacket – Sized for the angler
- Rain Jacket

Tackle

Finesse

- Drop shot hook/weights
- Ned Rigs
- Senko hooks

Spinners

Jigs

- Swim
- Flipping

Chatter bait

Top Water

- Frogs
- Whopper plover
- Buzz bait
- Poppers

Plastics and Trailers

- Creature baits
- Senko worms
- Ned plastics
- Swim baits

Colors

- Black
- Blue
- White
- Green Pumpkin
- Chartreuse



Electronics

Garmin vs Lowrance vs Humminbird

Down Imaging (DI) and Side Imaging (SI)

biglakebassteam.com/coaches-corner

Forward Facing Sonar (FFS)

- Garmin - Forward
 - LiveScope – Forward, Down and Perspective
- Lowrance
 - Active Target – Forward + Scout, 180 View and Scout wide
- Humminbird
 - MegaLive – Down, forward and landscape modes
 - Mega360

Humminbird

MegaLive 2 is only supported on
Apex, Solix and Xplore series
Helix is not supported

**BIG LAKE
BASS TEAM**

Practices

April 27th - Custom Lure Building Workshop

ALL HANDS-ON DECK!!

Practice is from 5-7 – doors will open at 430pm to start setting up for the night

- 8 Groups spending 15 minutes per Table
 - Spinner Table (Leena Lures – www.leenalures.com)
 - 2 spinners per student
 - Jig Table (Andrew Taylor from www.LurePartsOnline.com and Wayne Howe)
 - 2 jigs per student
 - Discount Rods for Sale – Dane Vocelka (<https://vocelkafishing.com/>)
 - Swimbait – DC Swimbait and Throwback Baits
 - Knot tying competition – prizes for kids
 - Casting competition – prizes for kids
 - Coaches Table
 - Tournament Table
- Raffle, Volunteer, Fundraising and Merchandise Table
- Line table – put line on reels

We will need additional coaches sitting in at the various tables and helping move kids to next table.

Students will each have a paper with the different tables and coach's names on it. They will mark off each table they visit along with all of the coaches (each coach signs their sheet) that they meet and talk to. Those students who have been able to get each table and all present coaches signed off will go into a drawing to win a Vocelka Rod (3 total rods to be given away).

2025 Tentative Schedule

PRACTICE SCHEDULE

3/16	INDOOR 5-7P BIG LAKE HIGH SCHOOL
3/30	INDOOR 5-7P BIG LAKE HIGH SCHOOL
4/13	INDOOR 5-7P BIG LAKE HIGH SCHOOL
4/27	INDOOR 5-7P BIG LAKE HIGH SCHOOL
5/12 & 14	BOAT 5:30-8P – BIG LAKE
5/19 & 21	BOAT 5:30-8P – BIG LAKE
6/2 & 4	BOAT 5:30-8P – BIG LAKE
6/9 & 11	BOAT 5:30-8P – BIG LAKE
6/16 & 18	BOAT 5:30-8P – BIG LAKE
6/23 & 25	BOAT 5:30-8P – BIG LAKE
6/29	Spudfest Classic Tournament
7/7 & 9	BOAT 5:30-8P – BIG LAKE
7/14 & 16	BOAT 5:30-8P – BIG LAKE
7/21 & 23	BOAT 5:30-8P – BIG LAKE
7/28 & 30	BOAT 5:30-8P – BIG LAKE
8/4 & 6	BOAT 5:30-8P – BIG LAKE
8/16	Veteran's Tournament
8/18	Banquet – Lion's Park

There will be an on-shore opportunity in June, July and August. We will share details once we have confirmation.

NO PRACTICE

- Week of 5/26 – Memorial Day
- Week of 6/30 – 4th of July Week

Big Lake & Lake Mitchell

Lakeside Park – 30 vehicle with trailer parking spots

Largemouth

Smallmouth – caught last year

Crappie and other Panfish

Northern Pike

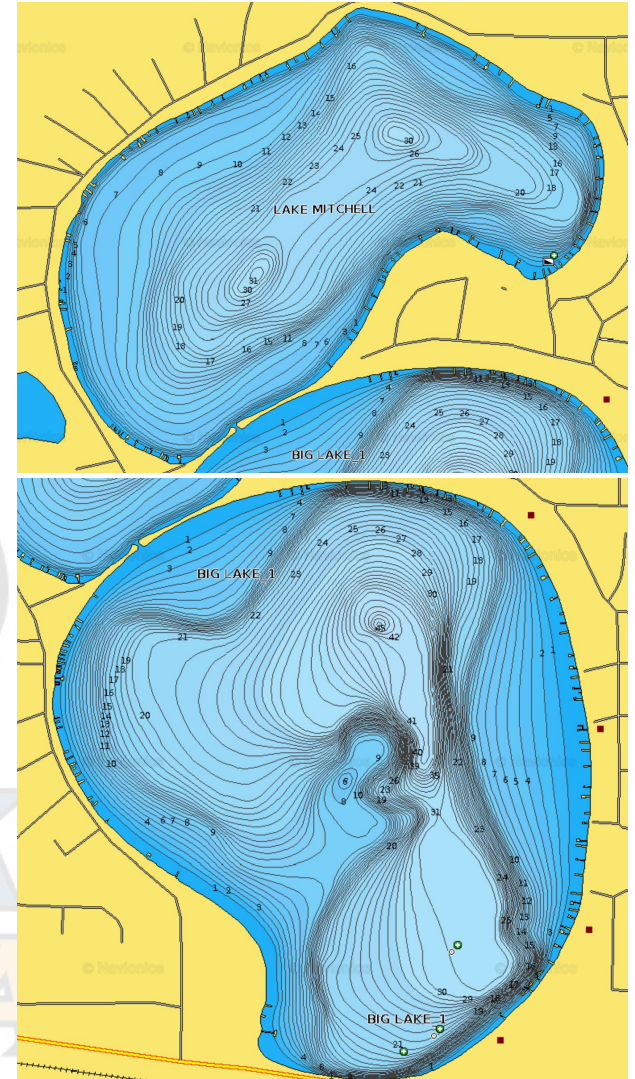
Walleye

Spring

Spinners, Jigs, Chatterbait and Wacky/Senko

Summer

Texas Rig, Drop Shot and Ned Rig with some top water action



BIG LAKE
BASS TEAM

Eagle Lake

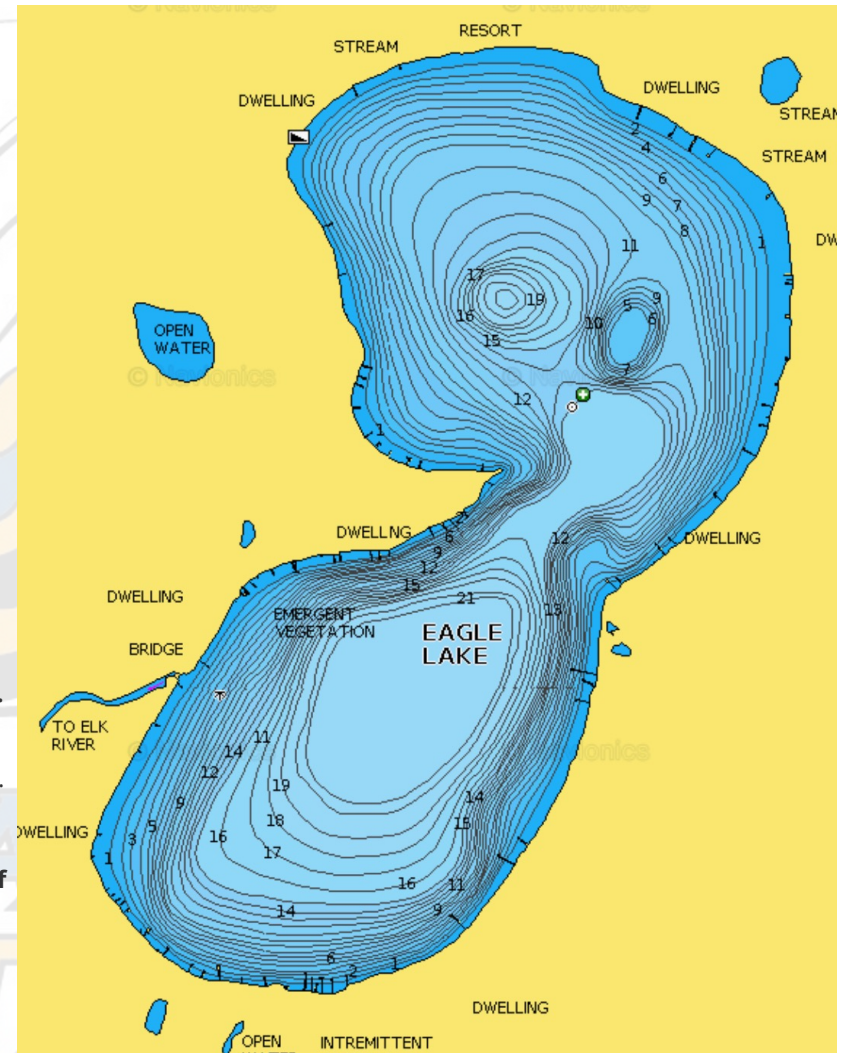
5 vehicle with trailer parking spots
Small dock

Largemouth
Crappie and other Panfish
Northern Pike
Walleye

Sherburne County residents and visitors should be aware of upcoming adjustments to the Eagle Lake public water access near the city of Big Lake. Starting May 1, the access will be temporarily closed to reconfigure the site to address a property line encroachment in the parking area.

The reconfiguration will reduce the number of parking spaces at the site from 14 to five. In conjunction with the reconfiguration, the Minnesota Department of Natural Resources will be more clearly delineating the parking spaces to enhance safety. In addition to parking changes, the boat ramp will be relocated to improve backing, turning, and launching efficiency. Access to the parking and launch area will be through a single designated entrance from County Road 75. Boaters should note that parking along County Road 75 is not allowed.

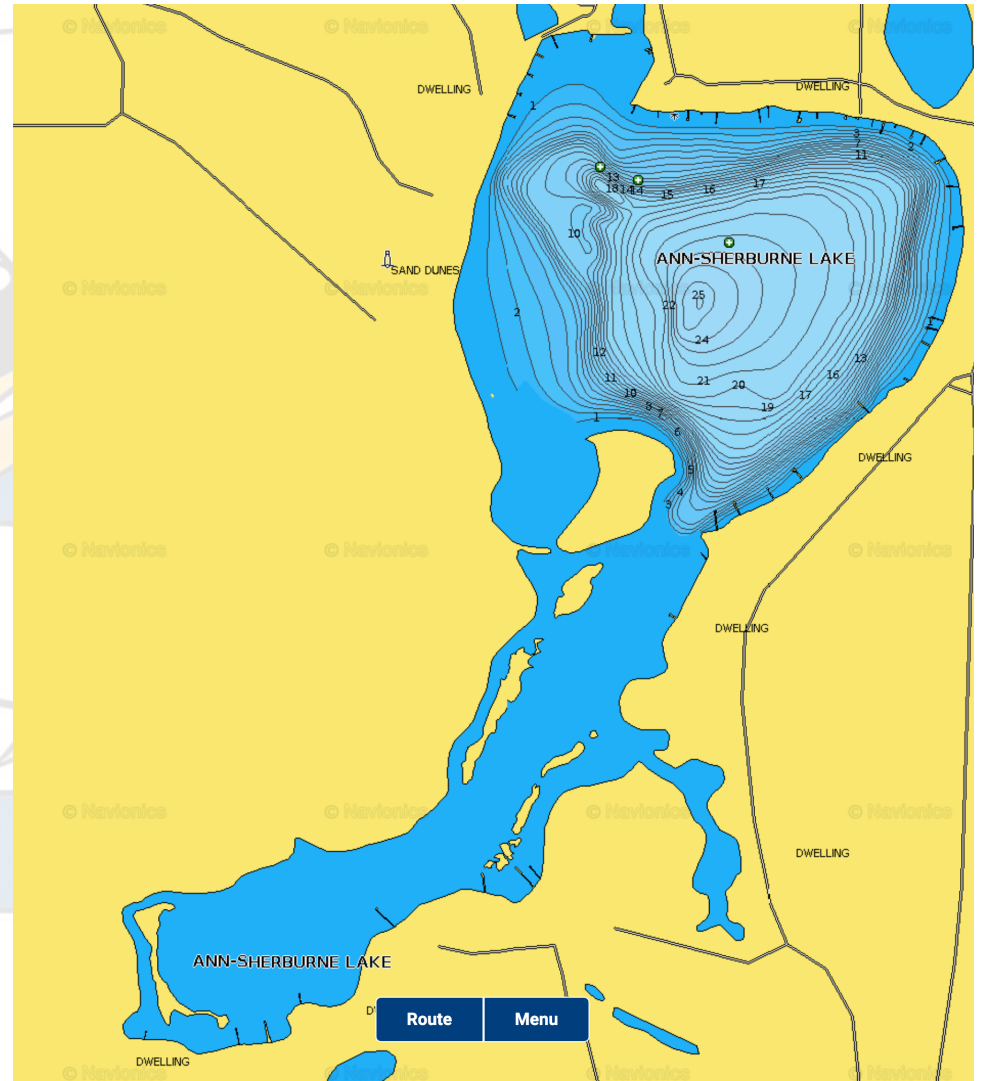
The PWA will be closed during the reconfiguration but will reopen in time for the start of the fishing season on May 10, with the updated ramp and parking adjustments. Signs at the site will provide project information, or the public can call the DNR Sauk Rapids Area office at 320-223-7861.



Ann Lake

8+ vehicle with trailer parking spots
Medium dock

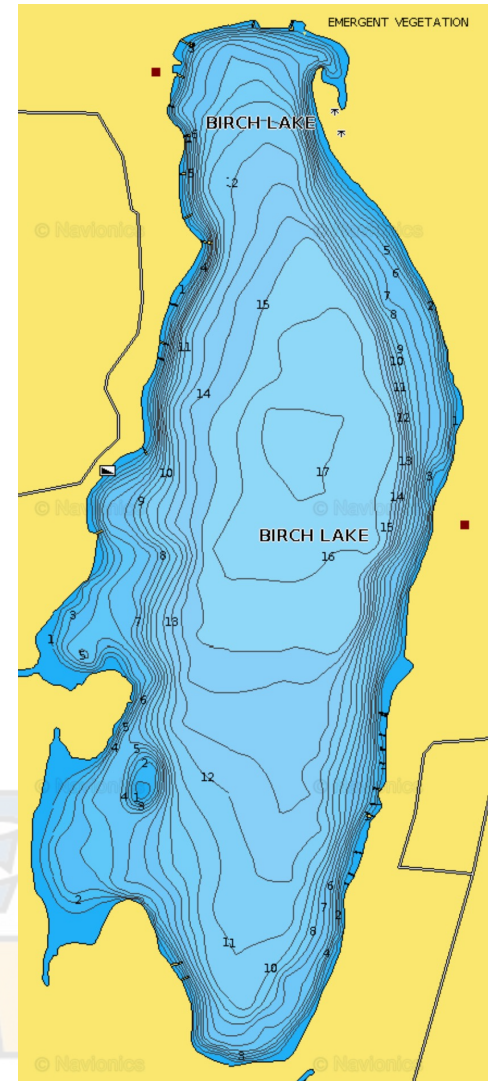
Largemouth
Crappie and other Panfish
Northern Pike



Birch Lake

6 - 8+ vehicle with trailer parking spots
NO dock

Largemouth
Panfish
Northern Pike

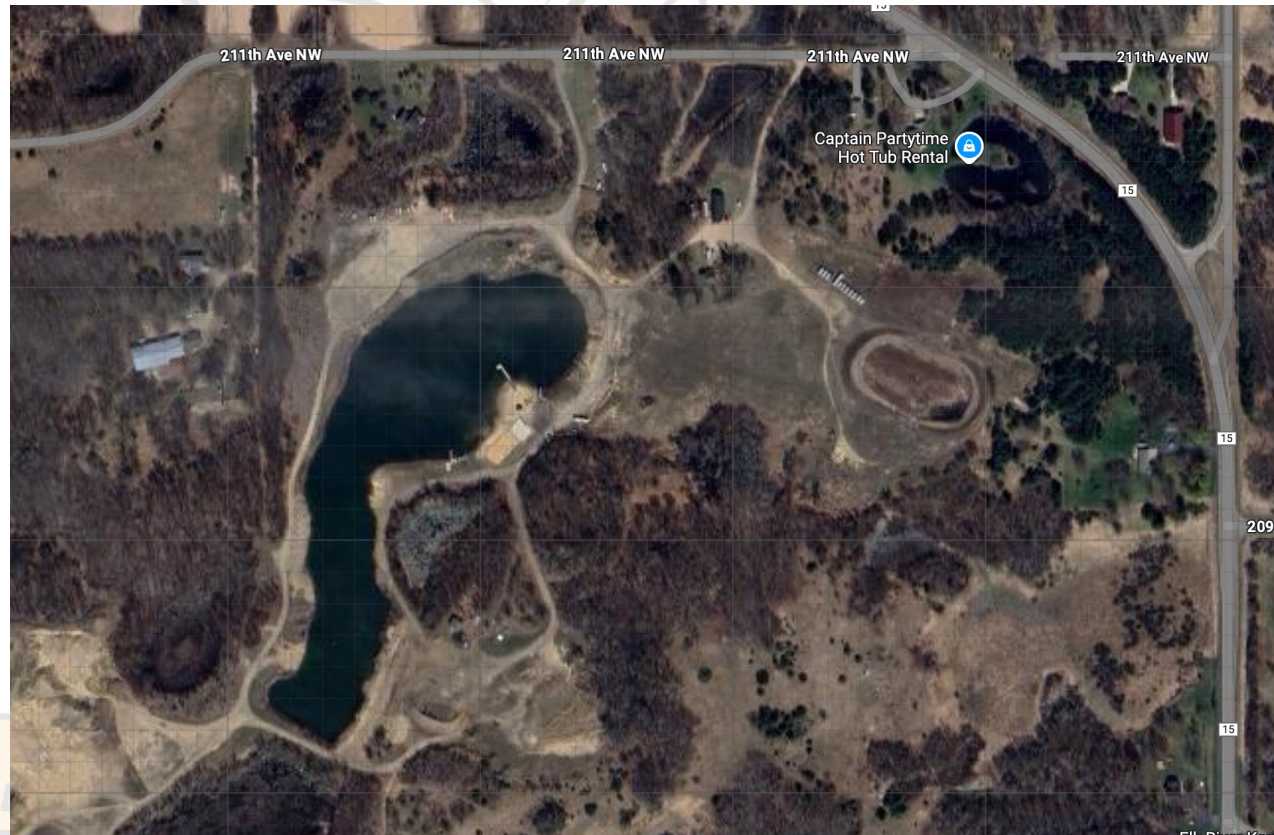


On-Shore “lake”

Plenty of Parking
Dock

Largemouth
Smallmouth
Meanmouth
Panfish
Northern Pike
Trout
Walleye

Private lake
Stocked



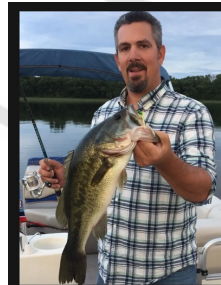
Coaching Profile

Hometown:
Proudest Fish:
Favorite Fisherman:
Favorite Species to Fish For:
Favorite Lakes:
Favorite Lure:
Go to rod / reel:
How did you learn to fish:
Who do you fish with most:
Boat:

Send a picture with a fish,
 preferably a bass to
biglakebassteam@gmail.com

Feel free to add a few sentences
 about yourself

www.biglakebassteam.com/coaches



Head Coach - Noel Krebs

Hometown: Beaumont, TX
Proudest Fish: 6lb Bass when I was a kid
Favorite Fisherman: Bill Dance / Roland Martin
Favorite Species to Fish For: Bass, Muskie and Walleye
Favorite Lakes: Leech Lake and BWCA
Favorite Lure: Anything top water, I have always enjoyed a top water blow up!
Go to rod / reel: G Loomis NRX / Curado
How did you learn to fish: Dad and Grandfather
Who do you fish with most: Wife and Kids
Boat: Ranger 620 Pro

Skywarn Spotter
 Big Lake Fire Department - Volunteer Fire Fighter
 MN DNR - Smokechaser

President - Big Lake Bass Team
 Contact Information
 Email: biglakebassteam@gmail.com



Head Coach - Lawrence Luoma

Hometown: Minneapolis, now Big Lake
Proudest Fish: Any fish my kids catch!
Favorite Fisherman: Al Lindner
Favorite Species to Fish For: Walleye and Bass
Favorite Lake: Osakis
Favorite Lure: Rapala Shad Rap
Go to Rod and Reel: St. Croix Avid 6'8" MF and Daiwa Revros LT 2500
How did you learn to fish: My dad
Who do you fish with most: Wife and kids
Boat: Alumacraft Competitor 185 CS

2017 USA Ice Team, NAIYC Pro, 2 time UPL TOY Champion.
 Owner of West Metro Walleye League and Luoma Outdoors Guide Service
<https://www.facebook.com/WestMetroWalleyeLeague/>
<https://www.instagram.com/luomaoutdoors/>

Vice President - Big Lake Bass Team

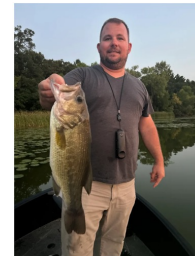


Coach Director - Wayne Howe

Hometown: Monticello, MN
Proudest fish: 65" lake sturgeon
Favorite Angler: Mark Zona
Favorite Lake: Clearwater
Favorite Lure: scum frog
Go to Rod / Reel: 7' G Loomis with a Pflueger supreme reel
How did you learn to fish: family and friends
Who do you fish with the most: my family
Boat: 175 vs Ranger with a 115 Johnson

I don't have a kid in the program. I am looking to help kids fish and be able to help out who ever takes them fishing. To get them ready for tournament fishing, if that is what they want to do.

Coaching Director - Big Lake Bass Team



Junior Coach Director - Paul Barker

Hometown: Shepherdsville KY
Proudest Fish: 5lb Bass when I was a kid at Fort Knox KY
Favorite Fisherman: G Man Gerald Swingle
Favorite Species to Fish For: Bass and Crappie
Favorite Lakes: Chickamauga TN and Mille Lacs MN
Favorite Lure: Frog topwater
Go to rod / reel: Favorite 7'3 medium for finesse fishing
How did you learn to fish: Dad and Brother n-law
Who do you fish with most: Wife and Kids
Boat: Alumacraft FSX 185

Junior Coaching Director - Big Lake Bass Team



Tournament Director - Aaron Jarvi

Proudest fish: 19" Largemouth
Favorite Angler: Brian Latimer
Favorite Lake: The one where the fish are biting
Favorite Lure: Swim Jig
Go to Rod / Reel: Lew's Mach Smash Spinning
How did you learn to fish: From my son
Who do you fish with the most: Son
Boat: Ranger Comanche 519 DVS

Tournament Director - Big Lake Bass Team

Classic Bass Boat Marshall

The Champions Tour is pleased to announce that the Student Angler Tournament Trail (SATT) will be providing boat officials for all Champions Tour events.

SATT is made up of a group of young anglers that are passionate about learning, and the Champions Tour provides great access to that education. The “Every Fish Counts” format engages the boat marshals and truly makes them feel part of the larger event. There is no better way to excite a group of young anglers than to be a boat marshal in the Champions Tour.

Speak to a coach if your student is interested – sign up soon as these fill up fast!

\$50 to student and random drawing for prizes

- Must be 13 or older the day of the event
- Ride with anglers during a Classic Bass tournament
- Great way to learn tournament fishing, techniques and speak with anglers
- 6/3 – Vermilion
- 7/1 – Mississippi Pool 8
- 7/15 – Lake Minnetonka Pro/Am
- 8/5 – Le Homme Dieu
- 8/26 – Tour Championship – Lake TBD



Brag Board / 5lb Club

Brag Board

- Picture of student angler with fish

5lb + Club

- Separate page on our website
- Using length conversion
- Picture with timestamp app on MNSATT approved bump board
 - 2 Pictures required (on bump board and student holding fish)
- Fish caught during the season
- 5lb club pins

<https://biglakebassteam.com/5lb-club>



BIG LAKE
BASS TEAM

Tournaments – Virtual In-House

FishDonkey

- Used for Big Lake virtual tournaments – Search BLBT in FishDonkey

Divisions

- Junior – 2nd – 7th grade
- High School – 8th – 12th grade
- Coach / Parent

Prizes – Junior and High School

- Based on best 7 fish bag
- Largest fish per grade(s)
 - \$25 gift card
- 1st – 5th place
 - 1st – \$125 gift card
 - 2nd - \$100 gift card
 - 3rd - \$75 gift card
 - 4th - \$50 gift card
 - 5th - \$25 gift card
- Random drawings for everyone who entered a fish that month
 - \$25 gift card

Rules

- Length measured using approved measuring tool
- Fish any MN public access body of water
- Smallmouth and Largemouth Bass
 - Fish caught during practice or other tournaments do count - enter those fish!
- Length to weight conversion chart used for weight

3 Virtual Tournaments

May 10 – June 9

June 10 – July 9

July 10 – August 9

Largemouth Conversion		
inches	FishDonkey	Infisherman
12	0.90	0.9
13	1.16	1.16
14	1.46	1.47
15	1.81	1.83
16	2.22	2.25
17	2.69	2.73
18	3.22	3.28
19	3.83	3.89
20	4.51	4.59
21	5.28	5.36
22	6.13	6.22
23	7.08	7.17
24	8.13	8.21
25	9.29	9.35
26	10.56	10.6
27	11.96	11.95
28	13.49	13.42
29	15.16	15.01
30	16.97	16.73
31	18.94	18.58
32	21.08	20.56

Inhouse In-Person Tournaments



Spud Classic

**Sunday, June 29th
7am till 11am**

**Live Weigh-In at Willy's on the Water
5 fish limit**

Prizes for top finishers – places and prizes still TBD

Teams to consist of a coach and up to two student anglers

- **All 3 can fish and all fish count**

Further details are getting ironed out over the next few weeks. We will be sending out emails and SportsEngine messages when the sign-up is available

Veteran's Tournament

**Saturday, August 16th
7am till 11am**

**Fish are entered into FishDonkey
5 fish limit**

Prizes for top finishers – places and prizes still TBD

Teams to consist of a coach, student and veteran

- **All 3 can fish and all fish count**

Further details are getting ironed out over the next few weeks. We will be sending out emails and SportsEngine messages when the sign-up is available

Tournaments

Is participating in tournaments a requirement to be on the Big Lake Bass Team – NO. These are optional and we will provide guidance and support to those that do participate.

Virtual Tournaments

- In-house (Big Lake Bass Team only)
- Student Angler Organization

Juniors

- B.A.T.S.
- Junior B.A.S.S.

High School

- MNSATT
- Junior B.A.S.S.



Tournaments SAO Virtual

www.studentangler.org

- **TBF/SAF membership**
- **Virtual**
 - Kindergarten+
 - \$20 per angler – reimbursed by Big Lake Bass Team
 - \$40 per team (up to 2 student anglers)
 - Parents are allowed to fish with the student(s)
 - If only a single student angler, the parent's fish count towards the bag limit
 - Any publicly accessible body of water
 - Cannot fish same body of water if angler places 5th or better
 - Fish from shore / boat / kayak or canoe
 - Boat captain must register if fishing from boat
 - Use MNSATT approved measuring board
 - Drawing for Scheels gift cards for each participant per tournament
 - [Rules](#)
- **Smartphone App**
 - FishDonkey

**Random Scheels gift cards
Scholarships and more**



2023 Top 5 Finishers

May 21st

- 2nd
 - McCormack/Blank – Big Lake

June 4th

- 1st
 - Stanek/Kotecki – Big Lake

June 18th

- 5th
 - Stanek/Kotecki – Big Lake

2022 Top 5 Finishers

June 5th

- 1st
 - Stanek/Kotecki – Big Lake
- 5th
 - Luoma/Luoma – Big Lake

**** Students are responsible for Registration / Boat / Captain / Travel Costs / Partners ****

Tournaments – B.A.T.S.

B.A.T.S. (Bassinator Anglers Traveling Series)

<https://www.facebook.com/bassinatoranglerstravelingseries>

www.mnbats.org

TBF/SAF Membership

In-Person

- Juniors (must be 8th grade or less as of September 6, 2024)
- \$50 entry fee per team (paid for by Big Lake Bass Team)
- Up to 50 boats per tournament
- Tournament runs from 7:00am to 1:00pm
- Top 25% per tournament advance to TOC on September 14th

Tournament Dates

- June 14 – Clearwater Lake
- July 12 – Mille Lacs
- August 9 – Le Homme Dieu
- September 13 – TOC – Waconia
- 1 team per 20 unique teams participating will be invited to National Championship based on Championship placement

Rules

- <http://www.mnbats.org/rules/>

Ruler Requirement Summary

All fish will have to be measured on approved rulers listed below

- Hog Trough (Make sure to get the one with the black lines),
- Scheels Aluminum
- Scheels Plastic Board (color all the lines in with a black fine tip permanent marker)
- Ketch Board (candy apple red to see better)
- Lund Aluminum Ruler
- Judge Ruler

Recommend that all the marks are in black so we can see them.

All pictures submitted to the FishDonkey app on an unapproved ruler will be rejected

It is the angler's responsibility to have a ruler and photo that we can see 1/4 marks

- *if we can't read anything it will be tossed*

**** Students are responsible for Registration / Boat / Captain / Travel Costs / Partners ****

Tournaments – MNSATT

www.mnsatt.org

TBF/SAF Membership

In-Person

- 8th – 12th grade (7th grader can fish with 9th grade+)
- \$40 per team – paid for by Big Lake Bass Team
- Varsity level competition
- Lakes are pre-fished Friday & Saturday before
- Tournament runs 7:00am to 2:00pm
- MNSATT Branded Ruler only
- Mandatory in-person meetings for 2024 events
 - Saturday night of tournament weekend
 - Boat Captain and at least 1 student angler MUST attend
 - Except Regional Events

Smartphone App

- ReelLiveWell
- TimeStamp

2025 SATT Registrations Open Dates	
Event	Registration opens at 6pm
5/18/25 - Northern Region - Whitefish Chain	Thursday, April 17th
5/18/25 - Central Region - Miltona	Thursday, April 17th
5/18/25 - Metro Region - Waconia	Thursday, April 17th
5/18/25 - Southern Region - Mississippi Pools 6 & 7	Thursday, April 17th
6/1/25 - LeHomme Dieu	Thursday, April 24th
6/15/25 - Gull Lake	Thursday, May 8th
7/13/25 - Mille Lacs	Thursday, June 5th
7/27/25 - Mississippi Pools 4 & 5	Thursday, June 19th

2025 SATT Parking Plan Open Dates	
Event	Registration opens at 6pm
5/18/25 - Northern Region - Whitefish Chain	Monday, April 28th
5/18/25 - Central Region - Miltona	Monday, April 28th
5/18/25 - Metro Region - Waconia	Monday, April 28th
5/18/25 - Southern Region - Mississippi Pools 6 & 7	Monday, April 28th
6/1/25 - LeHomme Dieu	Monday, May 12th
6/15/25 - Gull Lake	Tuesday, May 27th
7/13/25 - Mille Lacs	Monday, June 23rd
7/27/25 - Mississippi Pools 4 & 5	Monday, July 7th



**STUDENT ANGLER
TOURNAMENT TRAIL**
LUND RAPALA PRESENTS

**- 2025 -
SCHEDULE**

5/18/25 Regional day - Whitefish (Northern Division),
Miltona (Central Division),
Waconia (Metro Division),
Mississippi Pools 6&7 (Southern Division)

6/01/25 Le Homme Dieu (largemouth only)

6/15/25 Gull Lake Chain (largemouth only)

7/13/25 Mille Lacs

7/27/25 Mississippi pools 4&5

8/10/25 TOC Pokegama (Grand Rapids)

8/24/25 State Team Lake Vermillion

**** Students are responsible for Registration / Boat / Captain / Travel Costs / Partners ****

Tournaments – MNSATT

SATT branded ruler, which will be the only approved ruler for 2025

**NOTICE:
BRANDED
RULERS**

**STUDENT ANGLER
TOURNAMENT TRAIL**
LUND RAPALA
PRESENTS

**AS OF 2024, SATT WILL REQUIRE
THE USE OF THEIR BRANDED BUMP
BOARDS DURING ALL TOURNAMENTS.**

With your \$25 donation, you will receive your SATT
branded bump board ruler which can be picked up at any
of the following locations:

- NW Sportshow - Lund Fishing 101 Booth, March 14-17
- Pre-Season Meeting - St. Cloud Scheels Store on March 23
- Rules Meeting - Before Each Event

COACHES: You may request a group order to be shipped to
your team. Please contact president@mnsatt.org to order.

**** Students are responsible for Registration / Boat / Captain / Travel Costs / Partners ****

Tournaments – M

mnsatt.org

Annual Event

Central Division

Altona

Monday - May 18, 2024

C qualifier

TOY points for this event

BIG LAKE

BASS 1

Participants are responsible for Registration / Post / Control

TOURNAMENT
2025 Regional Dates

FARGO NORTH

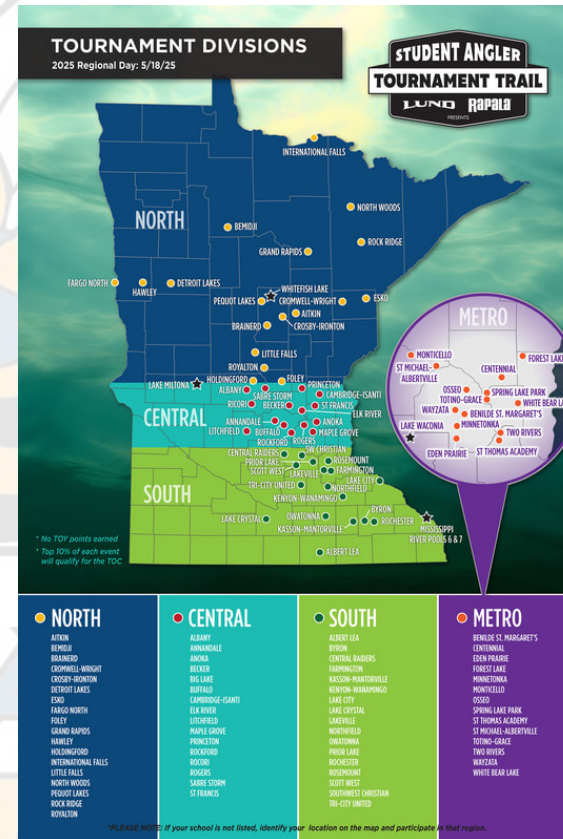
* No TOY points earned
* Top 10% of each event will qualify for the TOC

NORTH

ATTEN
BEVERLY
BRANDON
COPPELL
CROWLEY
CROWLEY
DETROIT LAKES
FARGO
FARGO NORTH
FARGO
GRAND RAPIDS
HAWLEY
HAWLEY
INTERNATIONAL FALLS
LITTLE FALLS
NORTH WISCONSIN
PEQUOT LAKES
ROCK RIDGE
ROYALTON

Regional Event

- ** Students are responsible for Registration / Boat / Captain / Travel Costs / Partners ****

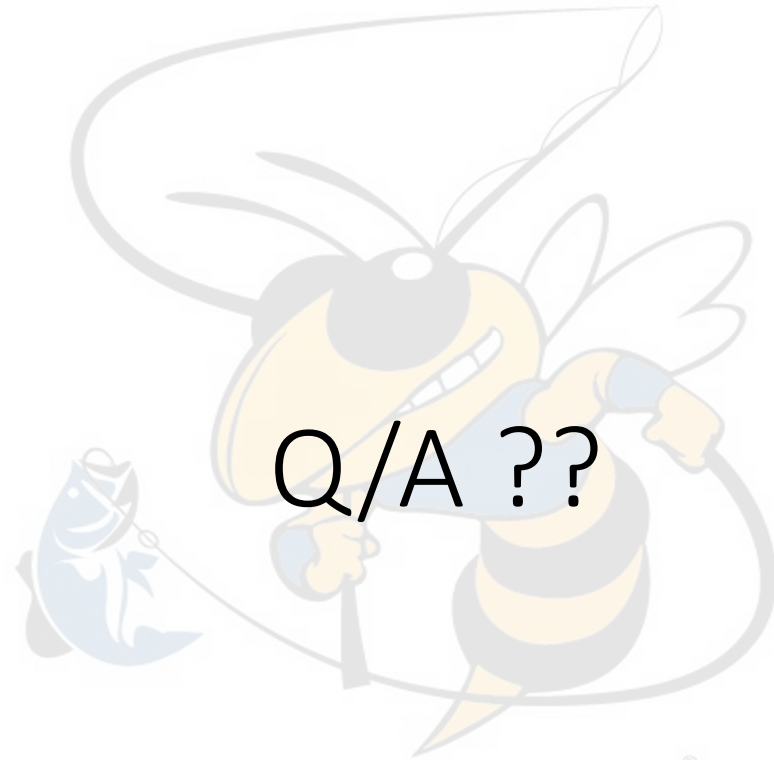


Tournaments - What to Bring

Recommended Equipment

- 4-6 Bait Casters
- 2-4 Spinning Rods
- Life Jacket
- Rain Suit
- Quick dry clothing – pants, shorts and shirts
- Team jersey and hat
- sunglasses
- Tackle and extra line
- Snacks and water
- Wool socks (light and heavy)
- Footwear (crocs, tennis shoes and/or rubber boots)
- Sunscreen/Bug Spray
- Phone chargers!

**** Students are responsible for Registration / Boat / Captain / Travel Costs / Partners ****



Q/A ??

BIG LAKE
BASS TEAM