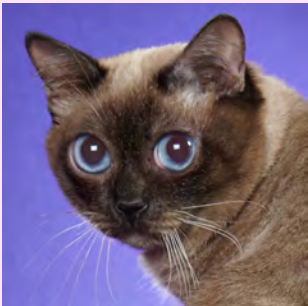


TOYBOB**GENERAL**

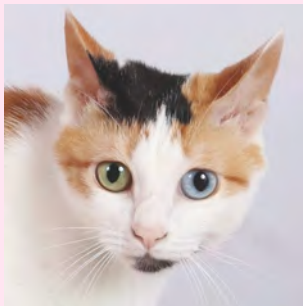
Toybobs are the smallest domestic cat breed, but they aren't a miniature version of any specific breed. The cat's bobbed tail is unique due to a spontaneous mutation that appeared in cats native to Russia. The naturally diminutive cats have a compact solid body, medium musculature, and medium bone structure with short bobbed tails typically consisting of one or more kinked vertebrae. Though small, the Toybob body should not look or feel refined or delicate. Its name is derived from two words, where "Toy" is meant to describe a playful small-sized cat breed, and "bob" refers to a bobbed tail. Toybobs reach full maturity at 1.5 years, with little to no size difference between both sexes, and ideally should retain a kitten-like appearance as adults.

HEAD

Medium-sized modified wedge with rounded contours and a flat plane above the eyebrows. The head is slightly longer than broader, with rounded cheekbones curved inward from face to mid muzzle to create a slight whisker pinch and ending in a blunt, modified square-shaped, relatively short muzzle. The nose can be straight or with a slightly curved bridge. Jowls are often prominent in adult males.

JAPANESE BOBTAIL**GENERAL**

Written records and paintings document the existence of the Japanese Bobtail in Japan for at least 1,000 years. The good luck cat of Japan is named for its distinguishing trait, the unique pom-pom tail composed of curves, angles, and kinks; no two tails are the same. The Japanese Bobtail should present the overall impression of a medium-sized cat with long clean lines and bone structure. It is well muscled but straight and slender rather than massive in build. The unique set of its eyes, combined with high cheekbones and a long parallel nose, lends a distinctive Japanese cast to the face, especially in profile, which is quite different from the other Oriental breeds. These charming cats are active and intelligent.

HEAD

Almost equilateral triangle, gentle curves. Although the head appears long and finely chiseled, it forms an almost perfect equilateral triangle with gentle curving lines, high cheekbones, and a noticeable whisker break. The nose is long and well-defined by two parallel lines from the tip to the brow. Chin in alignment with the end of the nose.

AMERICAN BOBTAIL**GENERAL**

The American Bobtail, native to North America, is a medium to large, naturally occurring short-tailed cat, a natural selection product. It is a hearty breed with all the intelligence and skill that nature demands of her creatures. The cat displays the look of an athletic animal, well-muscled and solid, with the appearance of power. One of the breed's most unusual traits is its shortened tail. No two tails are identical, so they are the hallmark of the individual and are proudly held above the back when the cat is alert, often wagging to express the cat's mood. The American Bobtail may resemble a wild cat yet are a loving and affectionate breed. The breed should also be noted for its exceptional disposition and adaptability. The breed is slow to mature, taking 2-3 years.

HEAD

Broad modified wedge with gently rounded contours, without noticeable flat planes or doming. Size in proportion to the body. Gentle concave curve between nose and brow. Muzzle slightly wider than long, break at well-defined cheeks. The chin is full in width and depth; aligns with the nose.

PIXIEBOB**GENERAL**

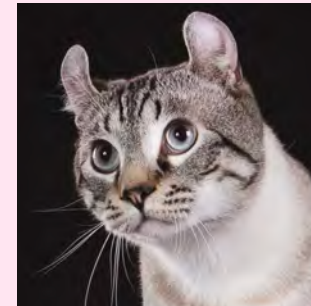
Originating in the Northwestern part of the United States, the Pixiebob resembles the wild Coastal Red Bobcat, having a strong heavy muscular body with substantial boning, an inverted pear-shaped head, heavily hooded eyes, and a strong muzzle and chin. It is the only bobtail breed accepted with polydactyl (cats with extra toes) feet. These intelligent cats are loyal and devoted to their family. The Pixiebob looks like a bobcat but with a domestic cat's loving personality. They are inquisitive, companionable cats who want to be alongside their family and communicate in their own language of chirps, chitters, and the occasional growl.

HEAD

Medium to large inverted wide pear shape, slightly rounded forehead to eye ridge, slight concave curve from eye ridge to bridge of the nose. Wide nose, slightly convex with large brick color nose leather, and slight nose bump.

HIGHLANDER**GENERAL**

The striking look of the Highlander with its long sloping profile and loosely curled ears draws attention to this substantial cat. The Highlander is a muscular, athletic cat. Development of the breed began in 2004 to create a domestic cat with a powerful "big cat" look. The cats used to develop the breed were carefully chosen from the domestic gene pool and not from any existing recognized breed. The Highlander's curled ears are the key feature that separates them from other bobtailed breeds.

HEAD

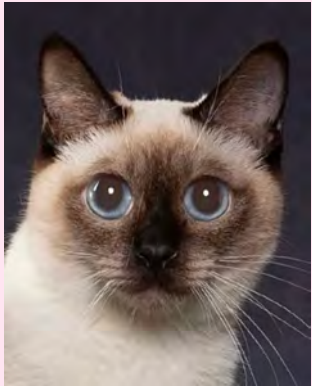
Wide, inverted pear-shaped head with substantial width to the full, wide, strong muzzle with a definite break. Prominent whisker pads should make the muzzle appear squared—wide substantial nose leather. The chin is strong and deep. Must align with the top of the jaw.

KURILIAN BOBTAIL**GENERAL**

Strong, with a wild appearance, the Kurilian Bobtail is a naturally occurring bobtailed cat that originated on the Kamchatka peninsula of Russia and has a long Japanese history with a chain of islands known as the Kurils. Because the Kuril Islands are now Russian-owned, this breed has been developed and promoted as a Russian aboriginal breed separate and distinct from the Japanese Bobtail. While closely related to the Japanese Bobtail - both share the same tail mutation; the Kurilian Bobtail is much larger, semi-cobby with more substantial boning and musculature. The impression one gets is of strength and power. In the wild, the Kurilian Bobtail is an excellent fisher and hunter.

HEAD

Large, moderate wedge shape, rounded in contours, wide at the cheekbone. The rectangular muzzle is wider than long and slightly rounded with an obvious whisker break. The chin is rounded in profile with a flat to ever so slightly rounded forehead and a very slight dip at the eye level to the broad, medium length, straight nose.

TOYBOB**EARS**

Medium-tall, one ear width apart when viewed from behind. Ears are as tall as wide in length, with slightly rounded tips and tilted forward—visible ear furnishings in the Longhair with no ear tufts. Matured males may have more width between the ear bases.

JAPANESE BOBTAIL**EARS**

Large, upright, and expressive. Wide-set, but at right angles to the head, rather than flaring, and give the impression of being tilted forward in repose.

AMERICAN BOBTAIL**EARS**

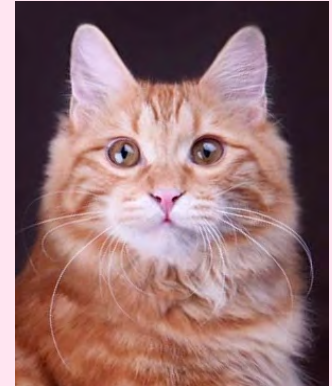
Medium to moderately large with slightly rounded tips and wide at the base. Placement should be as much on the top of the head as the side, following the wedge's shape. Lynx tipping, furnishings, and ocelli markings are desirable. Ears may appear pointed when lynx tipping is present.

PIXIEBOB**EARS**

Medium with a wide, deep base and a rounded top. As much on the side as on top of the head, slightly tilt outward. Lynx tips are desirable. Paler thumbprints on backs.

HIGHLANDER**EARS**

Medium in size, wide at the base, set as much on the top of the head as on the side, as erect as possible. Ears must be firm at the base, flexible at the tips. Loose relaxed curl of no more than 90 degrees. No preference given to the direction the ear tips point in. Ear furnishings and ear tufts are desired but not required. Kittens may have a greater degree of curl but not more than 90 degrees by adulthood.

KURILIAN BOBTAIL**EARS**

Medium-sized, wide at the base, slightly tipped forward. Distance between the ears is equal to the width at the base of the ear. Ears are triangular in shape, rounded at the tips with light to heavy furnishings depending on the coat length.

EYES

Large to very large. Eye shape is rounded with an open expression and a slight upward slant. The line across the corners of the eye leads to the outer base of the ear. A wide-set is preferred. The big-eyed expression is what gives the Toybob its characteristic sweet-faced look. Traditional eye color is related to coat color.

EYES

Large, oval, wide, and alert. Set into the skull at a rather pronounced slant when viewed in profile. The eyeball shows a shallow curvature and should not bulge beyond the cheekbone or the forehead. Eye color may harmonize with coat color or may be odd-eyed.

EYES

Large, almost almond in shape. Set at a slight bias to the ear. Eye color has no relationship to coat color, except in pointed, minks, and sepias.

EYES

Medium-sized, soft triangle, heavily hooded bushy brow. Deep-set one eye width apart. It is common for the Pixiebob to appear half asleep, gazing through partially closed eyes. Eye makeup: There must be a cream or white band directly surrounding the eye with mascara following the corner of the eye downward to the cheek. Gold to brown color preferred, gooseberry green accepted.

EYES

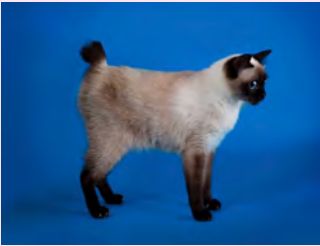
Medium to large-sized, set far apart. Set on a slight bias. Slightly flattened or hooded oval in shape. Eye color is independent of coat color except in the Pointed and Mink Category.

EYES

Moderately large, oval on top, round on bottom, set on a slight angle between base of ear and tip of nose, one eye width apart. Color to be clear, brilliant, no relation to coat color; white cats, vans, and harlequins can have blue or odd eyes.

TOYBOB**BODY**

The neck is short, thick with an almost no-neck appearance. The body is square-shaped and compact with a solid chest, broad rib cage, and slight depth of flank add to the torso solidness of the overall body balance. The back is almost straight when viewed from the side when the cat is in a natural walking position. Boning is neither heavy nor delicate. The musculature is firm, solid, and well developed with clean lines and no bulging appearance. A primordial pouch is common and may appear prominent on their compact body; this is not a sign of obesity.

LEGS AND FEET

Legs are strong, medium in proportion to the body. Hind legs are slightly longer than front legs. The feet are rounded with elongated toes on the hind legs—Toe tufts on the Longhair. When unsure, hind legs may go toe-out; should not be taken as a fault.

JAPANESE BOBTAIL**BODY**

Long, clean lines, straight and slender. When the cat is standing relaxed, the torso is nearly level rather than rising toward the rear. The boning is slender; not dainty. Medium; allowance should be made for females, as they can be smaller than males. The musculature is lean but shapely and well-muscled.

LEGS AND FEET

Legs are in keeping with the body, long, slender, and high but not dainty or fragile in appearance. The hind legs are noticeably longer than the forelegs but deeply angulated. When standing, the cat's forelegs and shoulders form two continuous straight lines, close together. The feet are oval.

AMERICAN BOBTAIL**BODY**

The neck is wide and gently curved. The torso is moderately long and substantial, with a rectangular stance. Chest full and broad. Back to be straight but not level, rising slightly toward hips. Hips almost as wide as the chest. Deep flank. Slightly longer in body than legs are tall. The boning is substantial. Muscular and athletic in appearance.

LEGS AND FEET

Legs in proportion to the body. Feet are large and round. Toe tufts are desirable in longhairs.

PIXIEBOB**BODY**

The torso is medium to large in size, substantial and rangy, but with great depth. The back is not level, dip behind the shoulder, upward slope slightly toward medium width hips. Flank is deep and powerful, chest broad and well developed—primordial belly pouch on both males and females. Heavy boning with a muscular build.

LEGS AND FEET

Legs long with heavy boning and muscular. Feet large, long and wide, almost round, with big knuckles and fleshy toes. The Pixiebob is the only bobtail breed where polydactyl feet are allowed, seven toes maximum. Leg and wrist must be straight when viewed from the front. All toes must rest on the floor pointing forward, and foot must appear sound.

HIGHLANDER**BODY**

The body is medium to large in size, with noticeable depth, and rectangular in shape. Straight back with hips higher than shoulders. The boning is moderately heavy and substantial—the cat has an overall well-muscled, athletic appearance. Males are proportionally larger than females.

LEGS AND FEET

Legs are slender, medium in length, and have oval paws. The feet are medium to large, rounded with large knuckles. The Longhair must have toe tufts.

KURILIAN BOBTAIL**BODY**

The body is medium to large, compact, semi-cobby. The chest is broad. The back may be slightly arched and rump raised somewhat. The boning is substantial. Musculature is well-developed and firm. Females may be noticeably smaller than males.

LEGS AND FEET

Legs are medium in length, substantial, hind legs longer than the front—rounded paws. Britches and toe tufts are desirable in longhair cats.

TOYBOB	JAPANESE BOBTAIL	AMERICAN BOBTAIL	PIXIEBOB	HIGHLANDER	KURILIAN BOBTAIL
--------	------------------	------------------	----------	------------	------------------

TAIL



Bobbed with one or more kinks and/or curves in any combination but also may appear and feel straight. At its lowest point without stretching, the tail is a minimum of two vertebrae to maximum length down to the hock. The last bone must be pointed, not blunt.

TAIL



Straight, curved, or angled, appears as a pom-pom. Usually carried upright when the cat is relaxed. Hair on the tail is somewhat longer and thicker than the body hair, growing outward in all directions to create a pom-pom or bunny-tail effect, appearing to commence at the base of the spine, camouflaging the underlying bone structure of the tail. The tail bone is usually strong and rigid rather than jointed (except at the base) and may be either straight or composed of one or more curves and angles. The furthest extension of the tail bone from the body should be approximately 2 to 3 inches, even though it might be 4 or 5 inches long if fully extended.

TAIL



Short, with a minimum length of 1-inch actual bone. The tail should not extend past the hock. A straight tail is ideal, may be slightly knotted or kinked, and also may be curled or hooked at the end, as long as the tail remains flexible where attached to the body.

TAIL



An articulated tail is desirable, however, kinks and curls are acceptable. Minimum of 2 inches in length (approximately thumb length). Maximum to the hock, when the hind leg is fully extended. When relaxed, the tail should be carried low.

TAIL



Composed of kinks or curves or any combination thereof starting already at the base. It has at least three vertebrae but must not be longer than one-fourth of the body length.

TAIL

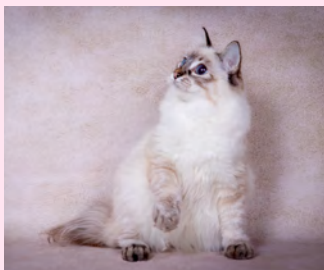


Composed of one or more kinks or curves or any combination thereof, appearing as a pom-pom or brush. It may be rigid or flexible or a combination of both (part rigid, part flexible). The size and shape of the tail should harmonize with the common appearance of the cat. When palpated, the tail consists of at least two vertebrae, with at least one kink or curve or any amount of combinations thereof. The direction of the tail is not important.

NOTE: THE TAILS SHOULD ALWAYS BE HANDLED VERY GENTLY. NO ATTEMPT SHOULD BE MADE TO STRAIGHTEN OUT TAILS.

TOYBOB**SHORTHAIR**

Coat is medium-short, moderately plush, slightly crisp to the touch, and medium dense. The coat is rather resilient and not close lying to the body. The coat has developed undercoat where the topcoat is almost the same length as the undercoat. Stomach hair is shorter and softer, while fur texture on the spine area is slightly thicker and coarser. Overall texture can vary with coat color. Kittens can have a somewhat woolly coat. Minimal seasonal changes in coat density, texture, and length.

TOYBOB LONGHAIR

Coat is semi-longhair to long in length and softer than the short-coated variety. The texture can vary with coat color. The topcoat is slightly longer in length than the undercoat, with a thick, plushy feel throughout the body. The coat is slightly shorter over the shoulders and may wave in the stomach area, ruff and britches. Heavy ruff is desirable. Tail coat is full and plumed. Ear furnishings and toe tufts are visible. No ear tufts. Allowance should be made for moderate seasonal changes in coat density, texture, and length.

JAPANESE BOBTAIL**SHORTHAIR**

Medium in length, soft and silky but without noticeable undercoat, relatively non-shedding.

JAPANESE BOBTAIL LH

Coat is length medium-long to long, texture soft and silky, with no noticeable undercoat in the mature adult. Frontal ruff desirable. Coat may be shorter and close lying over the shoulders, gradually lengthening toward the rump, with noticeable longer hair on the tail and rear britches, and should lie so as to accent the lines of the body. Ear and toe tufts are desirable.

AMERICAN BOBTAIL**SHORTHAIR**

Medium-short in length stands slightly away from the body, and is resilient, all-weather with double coat. Hair may be slightly longer on the belly.

AMERICAN BOBTAIL LH

Medium-long in length, resilient, all-weather with a double coat. Slightly longer hair on the ruff, britches, belly, and tail. Mutton chops preferred.

PIXIEBOB**SHORTHAIR**

Short coat must stand up off the body. Soft and wooly texture having loft and is resilient to touch. Dense belly hair is always longer than the rest of the coat. Facial hair is full and brushy in appearance, with the appearance of heavy fur above the eyes.

PIXIEBOB LONGHAIR

Medium in length, under two inches. Soft texture laying closer to the body than the Shorthair. Semi-dense belly hair is always longer than the rest of the coat. Facial hair is full and brushy, with a downward growth pattern and the appearance of heavy fur above the eyes.

HIGHLANDER**SHORTHAIR**

Coat should lay against the body smoothly. There will be texture variations depending on the color and coat length of the cat.

HIGHLANDER LH

Coat length is up to 2.5 inches, falling smoothly to the sides, with shaggy belly hair that is longer than the rest of the coat. There is seasonal variation in the coat. There will be texture variations depending on the color and coat length of the cat.

KURILIAN BOBTAIL**SHORTHAIR**

Short in length, with a well-developed top coat and little undercoat. Tail coat same length as body coat. Texture overall is dense and rather fine, soft, laying flat, resilient without a plush, dense feel.

KURILIAN BOBTAIL LH

Coat is medium in length, with a well-developed topcoat and little undercoat. Overall texture is dense and rather fine. Britches, toe tufts, and ruff are desirable. Tail coat full and plumed.

TOYBOB**JAPANESE BOBTAIL****AMERICAN BOBTAIL****PIXIEBOB****HIGHLANDER****KURILIAN BOBTAIL****Color/Pattern**

Every genetically possible color and pattern is allowed. Soundness of color and clarity of pattern is unimportant. Buttons, locket, and/or small white spotting in all colors and patterns (are not considered bi-color) are permitted. Darker body shading and/or unsound point contrast in the Pointed. Tarnishing in silvers is allowed.

PENALIZE

Oversized cat. Narrow head. Eyes set too close. Narrow muzzle. Definite stop. Weak chin. Ears too large. Longer necks in adults. Delicate boning. Elongated body. Short tight close-lying coat on the Shorthair. Tufts on ears on the Longhair.

DISQUALIFY

Crossed eyes. Docked tail. Complete absence of tail or tail past the hock (without stretching). Rapid oscillation of eyes. Dominant Blue Eye (DBE) gene: blue eye color in cats other than pointed, solid white, calico, bi-color, or van coat patterns. Disproportionately short legs to the cat's overall body balance. Extra toes. Evidence of wild ancestry. Undernourished or frail appearance.

Color/Pattern

No color or pattern is preferred over any other. In the dominant colored bi-colors and tri-colors (MI-KE), any color may predominate, with preference given to bold, dramatic markings and vividly contrasting colors. In the dilute-colored bi-colors and tri-colors (MI-KE), any color may predominate, with preference given to soft, muted markings and gently contrasting colors. In the solid color cat, the coat color should be of uniform density and color from the tip to the root of each hair and from the nose of the cat to the tail. Nose leather, paw pads, and eye color should harmonize generally with coat color. Blue eyes and odd eyes are allowed.

PENALIZE

Short round head, cobby build, excessively heavy bone.

DISQUALIFY

Tail bone absent or tail bone extending more than 3 inches from the body. Tail lacking in pom-pom or fluffy appearance. Delayed bobtail effect (i.e., the pom-pom being preceded by an inch or two of normal tail with close-lying hair rather than appearing to commence at the base of the spine).

Color/Pattern

All colors allowed. Ghost markings desirable on lynx points. High refusing is desirable on tabby colors. Tarnishing allowed on silvers. Buttons and locket allowable on any color and/or pattern. Cats with buttons and/or locket shall be judged as their basic color with no penalty for such locket and/or button.

PENALIZE

Tail too long or too short affecting the balance and appearance of the cat. Tail kinked or knotted out of shape. Tail rigid, fragile, or set low. Straight tail not exhibiting a fat pad. Round eyes. Weak chin. Extremely short muzzle or nose break. Cottony coat.

DISQUALIFY

Total lack of tail or full-length tail. Delicate bone structure. Incorrect number of toes.

Color/Pattern

Medium to light shades of brown with warm reddish tones preferred. The agouti hair must have several bands of color. Wild hare appearance has a mandatory mouse base coat with reversed ticking. Chin to belly and inner legs should be off-white to creamy in color with a mouse-gray base. Pale or light color belly to neck. Paw pads to the hocks and end of tail should be brown/black. Spotted tabby pattern, broken mackerel allowed, random spotting preferred, belly must be spotted.

PENALIZE

Belly too dark, close short-lying coat. Too long a coat on the Longhair. Flat head, deficient chin, and/or brow. Narrow hips. Lacking primordial belly pouch. White buttons and/or locket.

DISQUALIFY

Tail less than 1 inch or full length tail.

Color/Pattern

Solid colors in blue, black, cream, red, tortoiseshell, and blue cream only. All Tabby colors and patterns allowed in blue, blue silver, blue patched, blue silver patched, brown, brown patched, cream, red, silver, and silver patched. All accepted Highlander colors permitted in the Pointed, Mink, Sepia, Shaded, and Smoke. On the Pointed, expression of the underlying tabby pattern is desirable.

PENALIZE

Ears tightly curled where the ear tips are not visible. Ears set too low. Tail past the hock. Legs that are not set straight, cow hocking.

DISQUALIFY

Tail is docked. Full length tail. Ears are completely straight. Ears are not erect. Cryptorchidism. Polydactyl.

Color/Pattern

All colors and patterns except chocolate, cinnamon, lilac, fawn, Sepia, Point, and Mink are accepted. Any amount of white is allowed, including but not limited to blaze, locket, chest, belly, or paws on any accepted coat color.

PENALIZE

Tail length that is more than four inches [actual length] or less than two vertebrae. A "Delayed Bobtail" effect. Slender or oriental in body type and head type. Roman nose. Short hind legs.

DISQUALIFY

Absence of a tailbone. Deformations of the spinal vertebrae. Any tail without a kink or curve. Tails longer than 6 inches.

Photo Credits: Anna Gromova, DVM, Irina Syrchina, Gigi Guerriero, Helmi Flick photography, Tetsu Yamazaki photography, kurilianbobtails.com, toybob.org, worldcatcongress.org, fello.pet, worldlifeexpectancy.com, fofuxo.com, omlet.co.uk, breedlist.com, myfavpet.com
ANY LACK OF CREDIT IS UNINTENTIONAL. IMAGES ARE PROVIDED SOLELY FOR INFORMATIONAL AND EDUCATIONAL PURPOSES.