



1478 OLD COUNTRY ROAD
PLAINVIEW, NEW YORK 11803



+/- 26,250 SQUARE FOOT INDUSTRIAL BUILDING FOR SALE

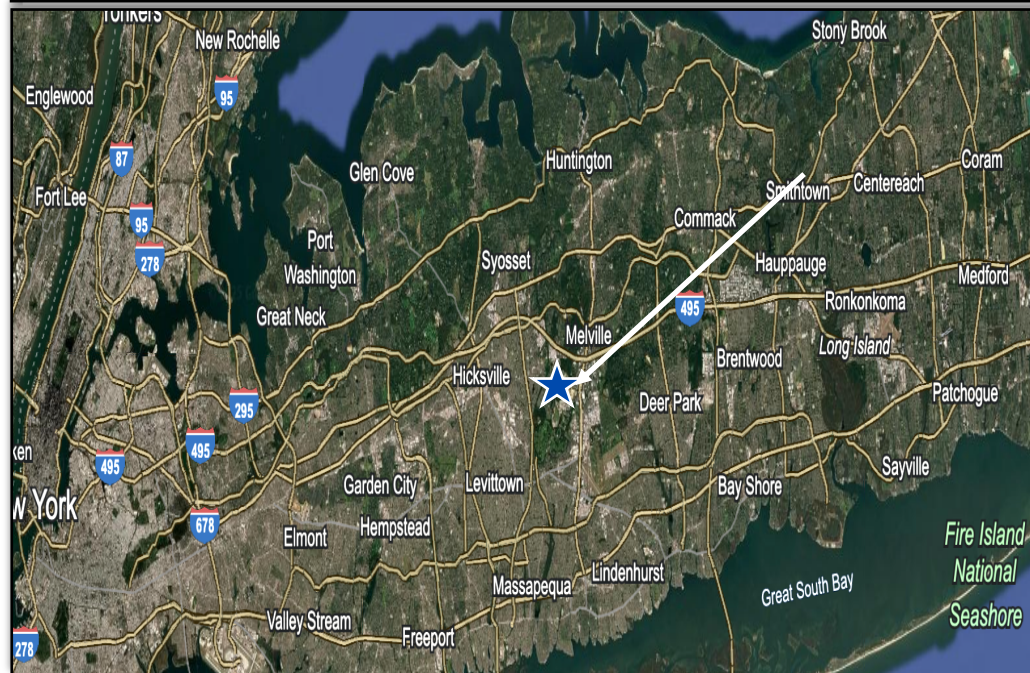
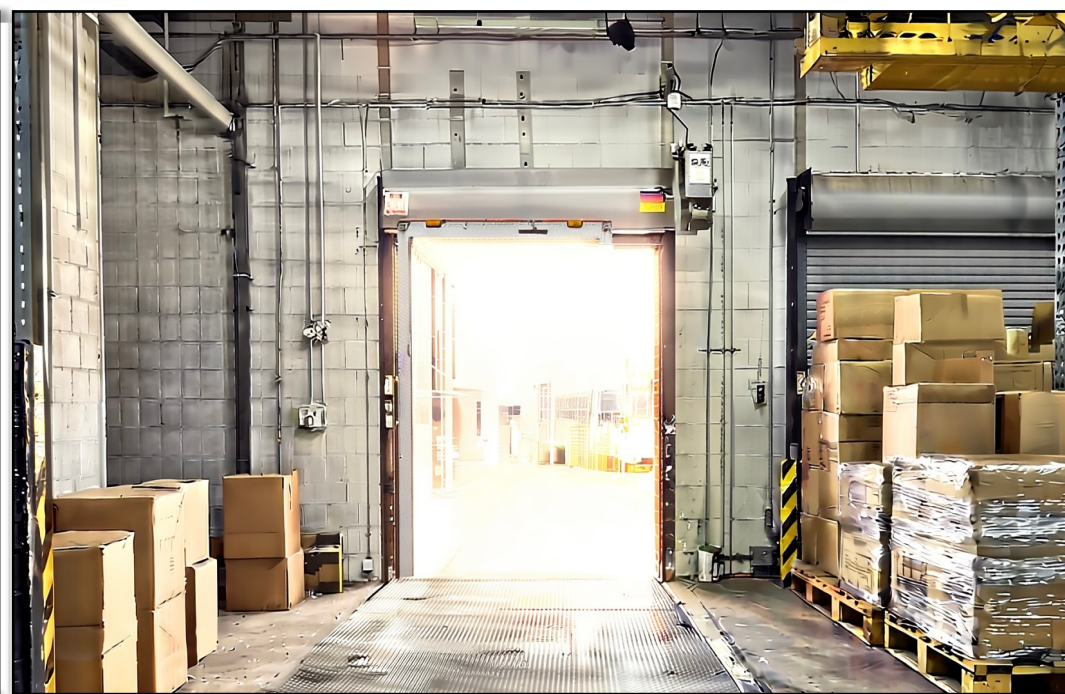
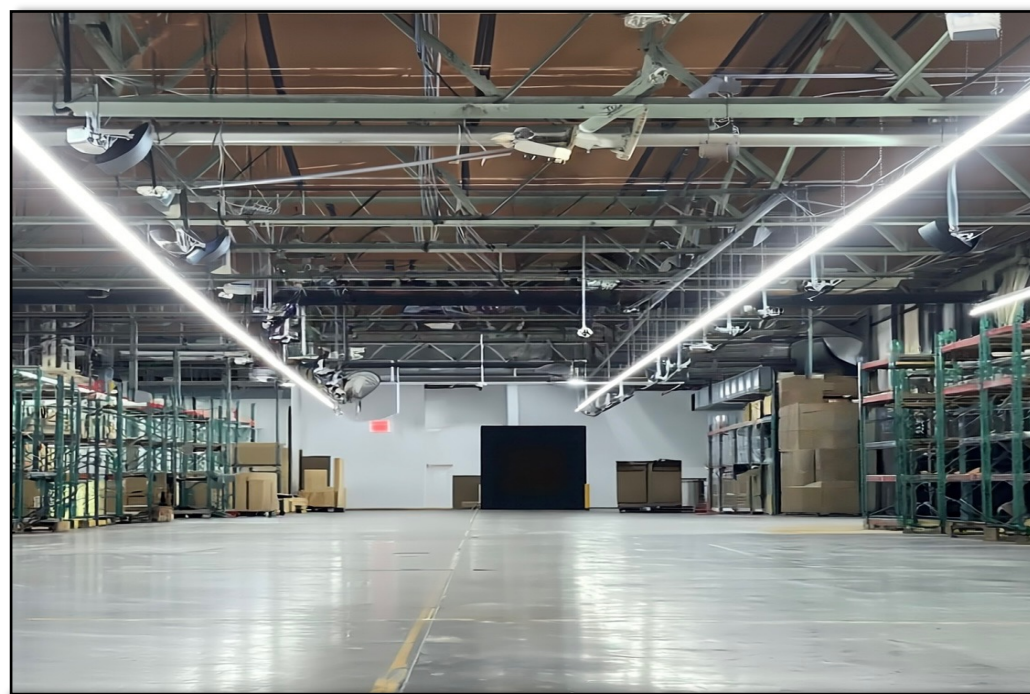
RECENTLY RENOVATED AND IN EXCELLENT CONDITION

PRIME LOCATION JUST OFF THE LONG ISLAND EXPRESSWAY



PROPERTY HIGHLIGHTS:

BUILDING SIZE:	+/- 26,250 SQFT
LOT SIZE:	+/- 1.33 ACRES
CEILING HEIGHT:	16' CLEAR
PARKING:	AMPLE (50+ STALLS)
POWER:	HEAVY (3,700 AMPS)
HEAT/HVAC:	GAS
LOADING:	2 LOADING DOCKS 1 DRIVE IN DOOR
SPRINKLERS:	WET
ZONING:	IND-1
RE TAXES:	\$4.47 PSF
PRICING:	INQUIRE FOR PRICING



FOR MORE INFORMATION OR TO SCHEDULE A TOUR OF THE PROPERTY, CONTACT EXCLUSIVE BROKER:

LUCIANO OLIVERIO

PRESIDENT

c: (516) 852-3757

e: luciano@summitcregroup.com

