

Innovative Housing / Navigation Center



City Net

a DBA of KINGDOM CAUSES, INC.



Welcome

City Net

Project Details

**Partnership
Opportunities**

Q & A

Current CA Scope of Work

- Kingdom Causes (2003), dba City Net (2014)
- Operating 89 projects in 45+ cities across six counties: Los Angeles, Orange, Riverside, Sacramento, Santa Barbara & San Diego
- 300+ employees
- Over \$50M in signed government contracts
- Hundreds of partnering agencies, community groups, local businesses, faith communities, etc
- Federal/State/County/City/Cal Trans/Corporate

Riverside County

- Active in County Continuum of Care since 2018
- 41 client facing staff
- Specific fee-for-service contracts in:

Riverside County	City of Hemet	City of Palm Desert
City of Riverside	City of San Jacinto	City of Wildomar
City of Corona	City of Perris	
City of Norco	City of Murrieta	



Who is City Net?

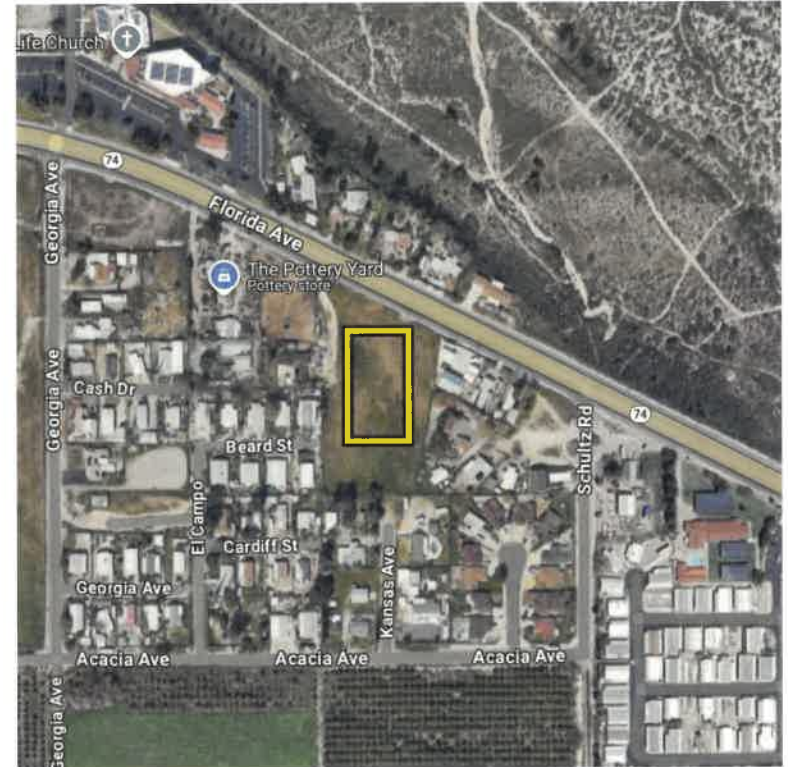


Innovative Navigation Center - County of Riverside

selected City Net based on competitive RFP process

- \$5.14 M award amount
 - \$3.40 M for capital (purchase/build)
 - \$1.74 M for set up and 18 mo of operations
- Project site and funding was unanimously approved by Board of Supervisors on June 25
- Funding Sources are American Rescue Plan Act (ARPA) and Encampment Resolution Funds (ERF)
- Worked with County staff, Sup. Washington & Sup. Gutierrez for approved site selection
- Closed escrow on 2.75 acres on September 24

Target open date: Sept 2025



45359 Florida Ave, Hemet, CA 92544

Navigation Center





Innovative Navigation Center

- We are building housing units!
(Initially operate as a Navigation Center)
- \$5.14 M award amount
\$3.40 M for capital (purchase/build)
\$1.74 M for set up and 18 mo operations
- Modular housing product built offsite
- Workforce development / training
- Solar power generation
- Gray water collection
- Sustainable / edible landscaping
- Atmospheric water generation



Navigation Center





Twenty
2-Bedroom Units
(approx. 336 sq ft
plus porch)



Other Current ABDH Projects

Affordable-By-Design Housing





Navigation Center Operation

- We currently operate 560 beds nightly
- Top Priorities – Safe & Clean!!
- Reservation system
- All residents will be referred into the center via ytbcd process with Coordinated Entry
- Key programming elements:
 - City Net staffing 24/7/365
 - Stringent policies and procedures
 - Individual client user agreements (no guests)
 - “90-day program”-No exit if progress towards housing
 - Housing first / Low Barrier agency
 - No 290 status or violent felonies

Navigation Center

