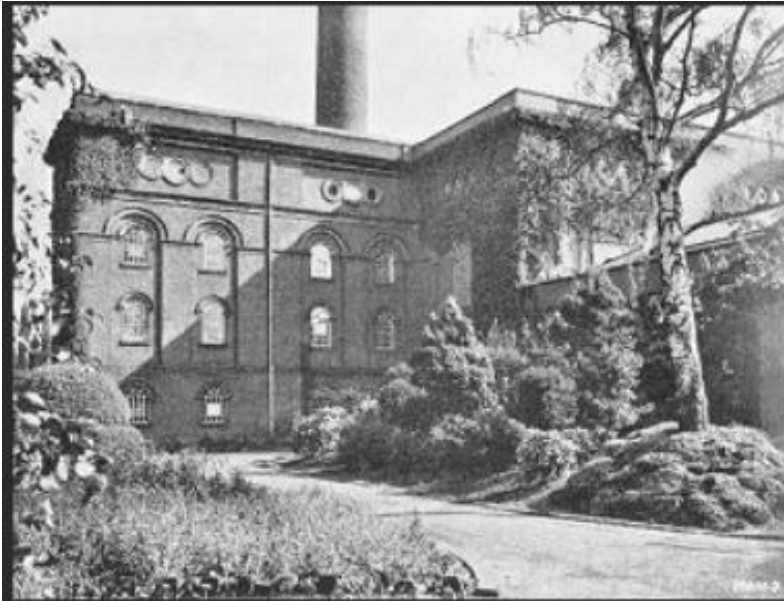




# The Vision for Tettenhall Museum

CELEBRATING LOCAL  
HISTORY AND CULTURAL  
HERITAGE

# Presentation Agenda



## Historical Foundations

We will explore the historical roots of Tettenhall, focusing on the Saxons and Danes, and their cultural impacts.

## Cultural Exchanges

The agenda includes discussions on cultural exchanges and educational programs planned for the museum in Tettenhall.

## Aethelflaed's Role

We will discuss Aethelflaed's significant role in the unification of England and her influence in Tettenhall.

## Transport Heritage

The transport and manufacturing heritage of Tettenhall will be highlighted, showcasing its industrial evolution.

## Contributions During WWII

Finally, we will examine Tettenhall's contributions during WWII and its impact on the local community.



# Introducing The Vision for Tettenhall

## Celebrating Local History

The museum will celebrate Tettenhall's rich local history and cultural heritage through various engaging exhibits.

## Community Engagement

Engaging the community with educational programs and events that foster a sense of belonging and participation.

## Immersive Experiences

The vision includes creating immersive experiences that allow visitors to connect with Tettenhall's unique contributions.



## A Community Learning and Museum Space

- The museum encourages community contributions to enhance its offerings.
- Opportunities for artists to showcase their work will be available.
- Special events will feature guest speakers and workshops for all ages.
- Reenactors will bring historical events to life for visitors.
- Community art workshops will promote local creativity and collaboration.

---

# Community Facilities for Sustainable Engagement



- The museum will feature a café promoting local produce and sustainability.
- A shop will offer handcrafted items, supporting local artisans and businesses.
- Creative workshop spaces will encourage community involvement and learning.
- An outdoor historic-themed play area will provide educational fun for families.



# Tettenhall's Historical Foundations

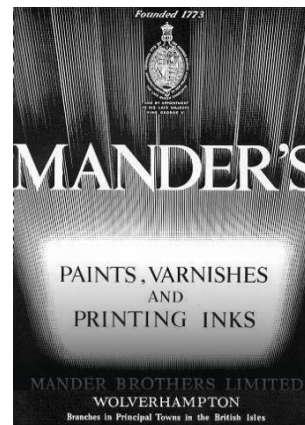


Rich history of interesting building and historical locations.



## Viking / Anglo Saxon Conflicts

The conflicts between Saxons and Danes in the 9th and 10th centuries greatly impacted Tettenhall's development and legacy.



## Cultural Heritage

Wolverhampton has rich industrial, and transport history which continue to shape local identity, fostering a sense of pride and community among residents.

---

# The Battle of Tettenhall (910 AD)

## Historical Significance

The Battle of Tettenhall was a key moment in Anglo-Saxon history, marking a major victory against Viking invaders.

## Combined Forces

Saxons and Mercians united their forces, showcasing the importance of collaboration in defending their lands against invasion.

## Museum Experience

The museum will recreate the battle using advanced technology to provide an immersive experience of tactics and aftermath.





# Legacy of Unity

## Exploring The Lady Aethelflaed

### Aethelflaed's Achievements

Aethelflaed played a crucial role in unifying various kingdoms, laying the groundwork for future unity under Æthelstan.

### Role of Tettenhall

Tettenhall was strategically important during this transitional period, serving as a key location in Aethelflaed's efforts.

### Æthelstan's Influence

Aethelflaed's legacy paved the way for her nephew Æthelstan, who became the first King of a unified England.



# Cultural Exhibition Ideas

## Influence on Language

Saxon and Danish cultures significantly influenced the development of the English language, contributing to vocabulary and syntax.

## Legal Traditions

The legal systems of Saxon and Danish cultures laid the groundwork for contemporary laws, integrating customs and regulations.

## Daily Life Insights

Exhibits will provide insights into daily life in Saxon and Danish communities through tools, clothing, and household items.



# Educational Programs

## Community Engagement Learning Workshops

Communities have the power to influence ongoing commissions and witness artists at work.

Here, guest speakers, reenactors, and artists share their insights and expertise to motivate new generations.

## Historical Learning Workshops

### Daily Lives of Saxons and Vikings

Our initiatives will explore the everyday practices, traditions, and lifestyles of the Saxons and Vikings, offering engaging educational experiences.

## Cultural Influences

The programs will demonstrate how Saxon and Viking cultures have impacted contemporary place names and customs, enriching our cultural legacy.





# Transport and Manufacturing Heritage

## Transport Heritage

Tettenhall's transport heritage has played a vital role in connecting local and regional communities, ensuring efficient movement.

## Industrial Revolution Contributions

The area significantly contributed to manufacturing during the Industrial Revolution, showcasing a spirit of local innovation and industry.



# Transport Heritage

## Historical Significance

The Tettenhall Transport Heritage Centre highlights the historical impact of transport on community development in the area.

## Community Connectivity

Transport has played a crucial role in enhancing connectivity within the community, influencing its growth and development.

## Ongoing Importance

The Centre will also explore the ongoing significance of transport in modern society and how it continues to shape our lives.

---

# Manufacturing & Industrial Revolution



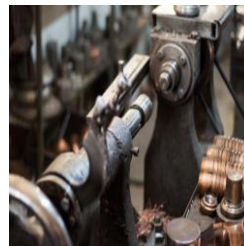
## Role of Tettenhall

Tettenhall significantly contributed to the Industrial Revolution, fostering innovation and local industries that shaped its economy.



## Innovation and Industry

Local stories of innovation during the Industrial Revolution highlight the creative spirit that drove manufacturing changes.



## Evolution of Manufacturing

The museum will showcase the evolution of manufacturing practices, demonstrating how they have transformed over time.



---

# WWII and Community Resilience

## Local Stories of Resilience

The museum will showcase personal stories of individuals and families who demonstrated remarkable resilience during the war.

## Defense Efforts

We will highlight the local defense efforts and contributions made by the community to support the war effort.

## Community Spirit

The exhibition will celebrate the spirit of togetherness and cooperation that emerged among residents during this challenging time.



# Tettenhall's Role in WWII

## Local Contributions

Tettenhall's local inhabitants played a critical role in supporting the war effort through various initiatives and contributions.

## Wartime Initiatives

Exhibits will highlight the wartime initiatives undertaken by Tettenhall, showcasing bravery and innovation during challenging times.

## Collective Resilience

The spirit of resilience among Tettenhall's residents is a key theme, reflecting their ability to adapt and support each other during WWII.



# Conclusion

## Celebrating Local History

The museum focuses on celebrating the rich history of Tettenhall, encouraging visitors to appreciate their heritage.

## Educational Programs

Through educational programs, the museum aims to engage visitors and enhance their understanding of local history.

## Fostering Community Pride

The museum seeks to foster a sense of pride and connection among the local community regarding their history.