



IBDH

India Bore Diamond Holdings Pty Ltd

ELLENDALE DIAMOND MINE

Project Overview



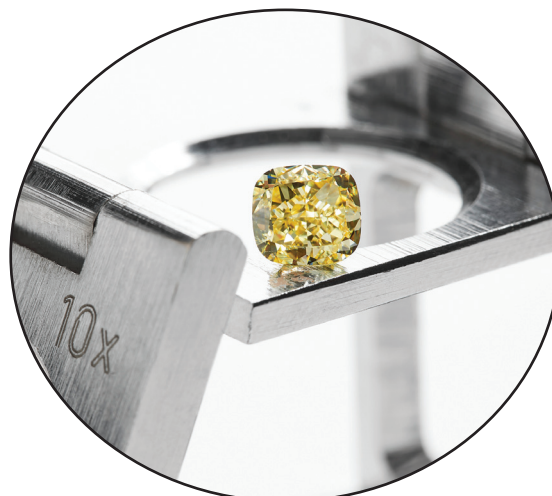
February 2024



Mine Status

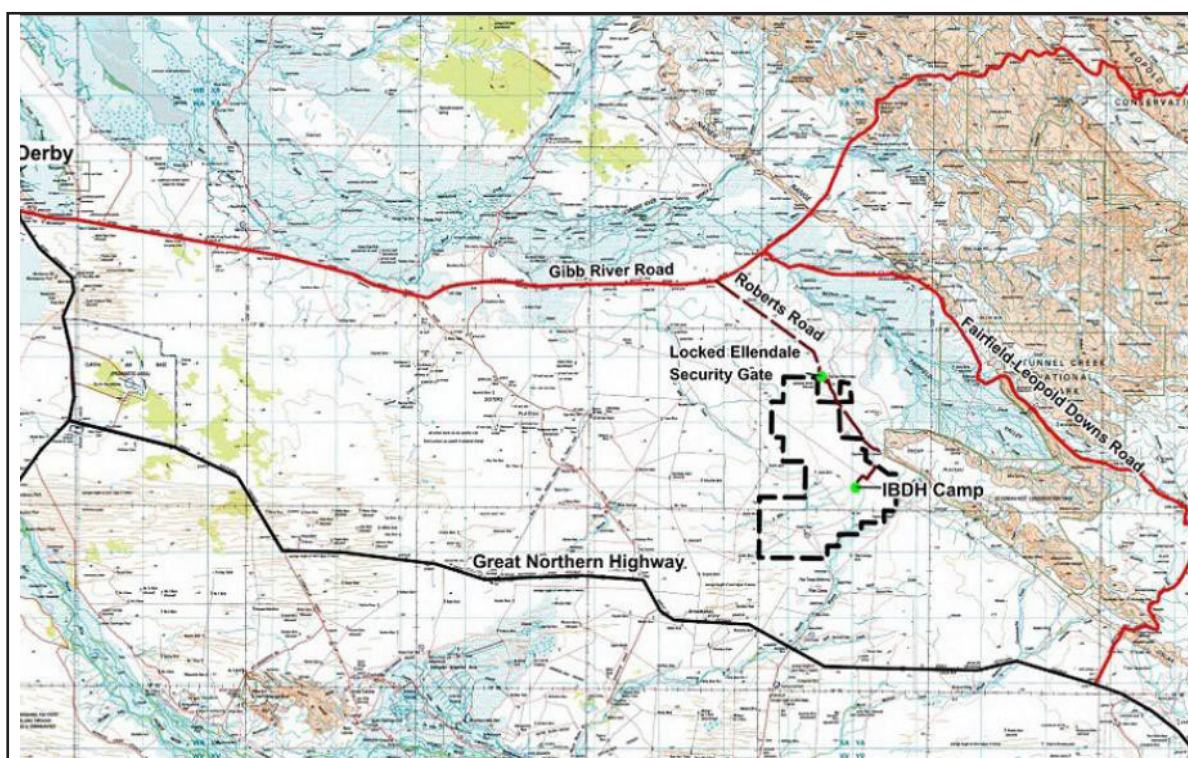
- ◆ Granted mining leases and exploration licenses
- ◆ Native title mining agreement signed
- ◆ Approval to mine 2 million tonnes per year
- ◆ Recognised by WA State Government as a “Major Resource Development Project”
- ◆ Project is shovel ready with all regulatory requirements completed





Location

- ◆ Within the highly sought-after “Ellendale Diamond Field” [EDF]
- ◆ The EDF was the source of 50% of the world’s supply of high quality vivid and fancy yellow diamonds
- ◆ Access - 130km east of Derby [sealed highway], then 25km of good pastoral road





Discovery

The current results of the IBDH mining project brings a totally new dimension to the prospectivity of the EDF with new channels being discovered.

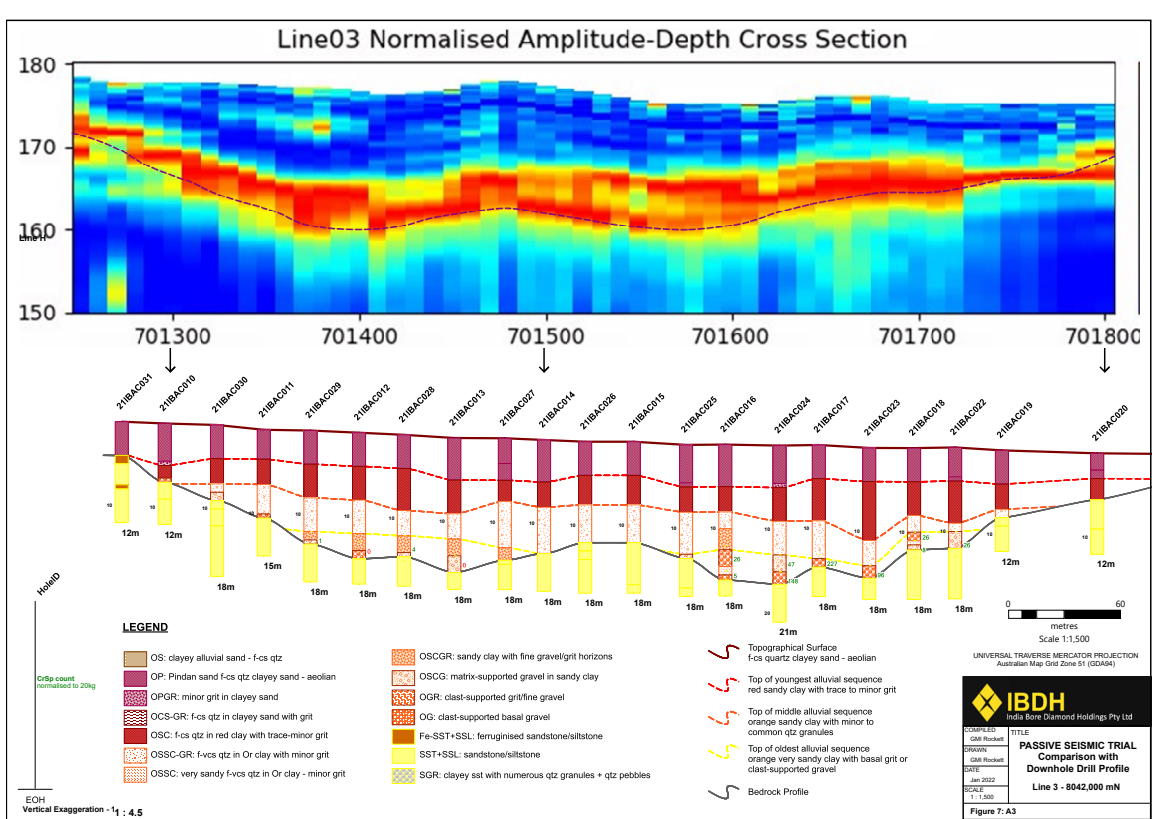
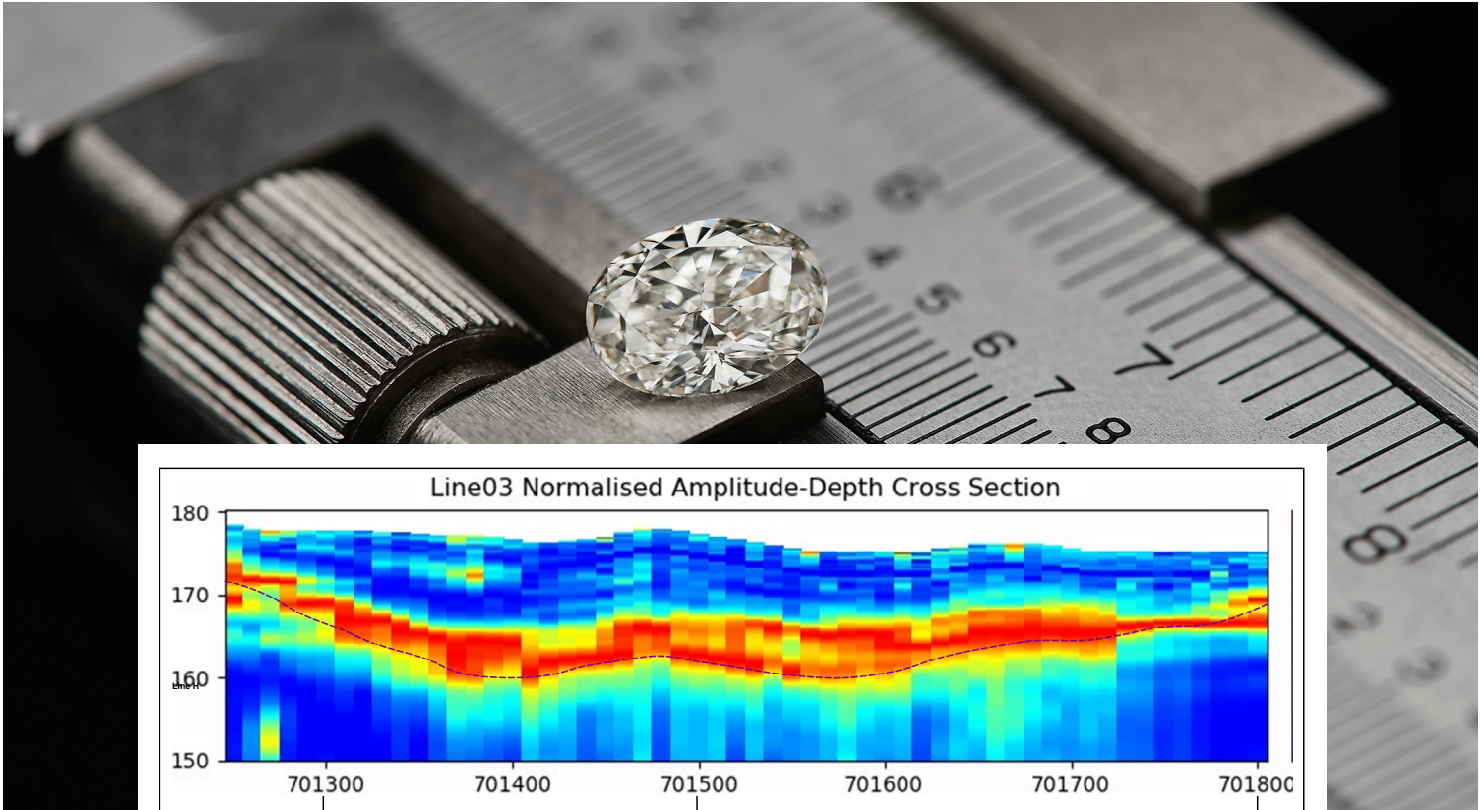
The geological model developed by IBDH proposes that an ancient sea flowed south, greatly extending the potential diamondiferous palaeochannel footprint.





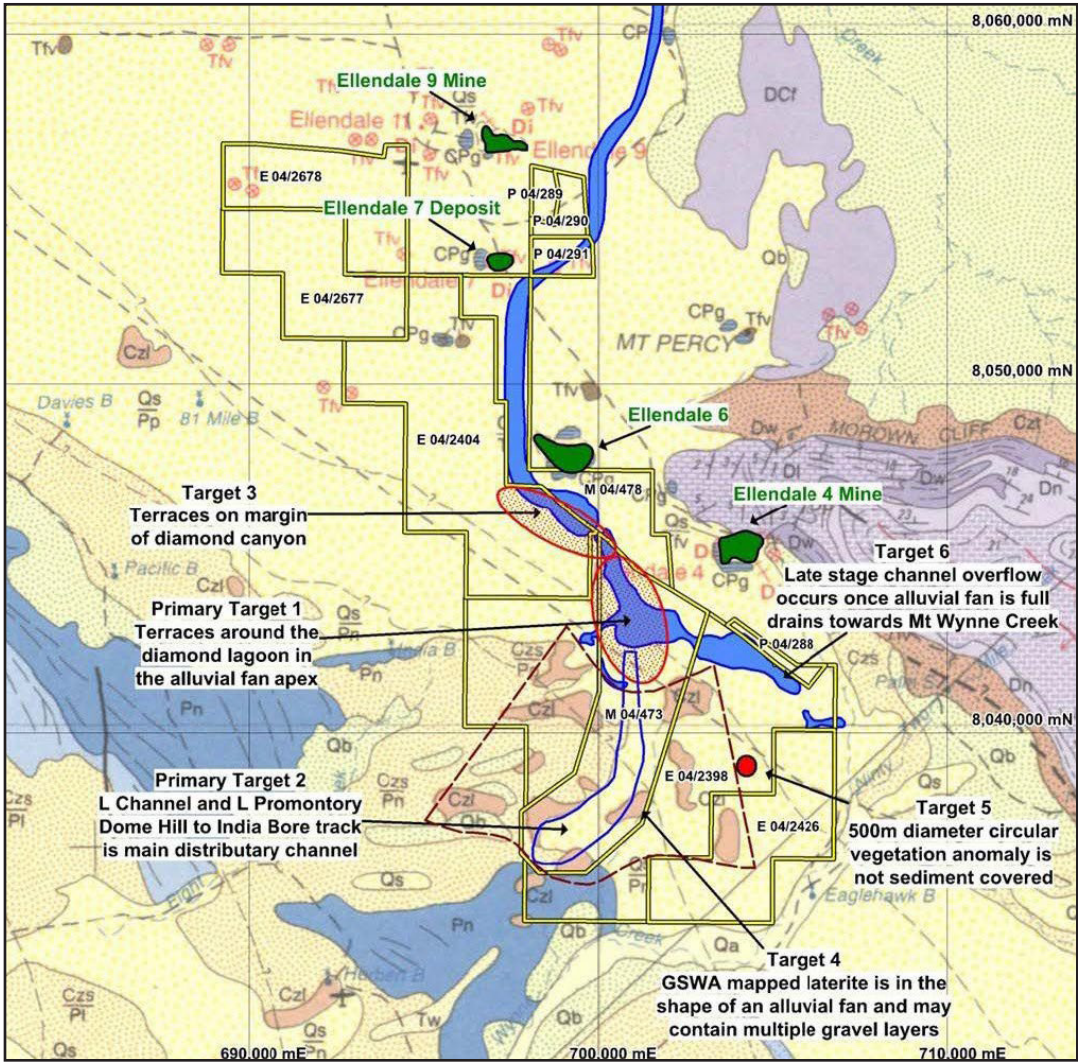
Exploration

IBDH has adopted a passive survey system to better define the diamond bearing alluvial channels which are subsequently drilled prior to mining.



Resource

- ◆ Preliminary resource estimate of 1.3 million carats contained in the southeast of the IBDH tenements alone.
- ◆ This estimated resource is kilometres from the probable sources of the diamonds, demonstrating the prospectivity of the northern IBDH tenements.
- ◆ IBDH has recovered diamonds that are different from the Ellendale Mine diamonds, indicating probability of other sources within the IBDH tenements.



Infrastructure

Mining infrastructure is in place for commencement of mining and diamond recovery.

- ◆ Trial mining undertaken and diamonds recovered.
- ◆ Project infrastructure includes:
 - Access Road
 - Water supply - operating bore field approved
 - Airstrip - recently repaired by WA Mines Department
 - Satellite communication system
 - 22 person accommodation village and offices
 - Mining equipment
 - Trial diamond processing plant [to be upgraded]





Mining

- ◆ Shallow buried river systems
- ◆ Very low cost alluvial mining
- ◆ Extensive trial mining undertaken
- ◆ Simple shovel and truck mining





Traditional Owners

IBDH has developed a co-operative working relationship with the Traditional Owners, the Bunuba Dawangarri Aboriginal Corporation [BDAC].



IBDH has a signed mining agreement in place, which covers commercial mining.



Provenance

To demonstrate provenance of the recovered diamonds and their ultimate marketability, IBDH has developed a comprehensive sustainability, accountability and ethical behaviour management system.

High standards of environmental, safety, health, cultural and heritage protection management are maintained and reported.





Diamonds

High quality, yellow and white diamonds,
recovered, cut, polished and classified.



54 DIA 1554
Rough 1.574ct 6gr



POLISHED 1.02CT INTENSE
FANCY YELLOW VVS2



Natural Diamond
Grading Report





Personnel

IBDH have engaged a team of diamond professionals to classify the recovered and polished diamonds.

Highly experienced diamond personnel, including qualified mining professionals and geologists, including:

- ◆ **PETER McNALLY**
Managing Director and General Manager
- ◆ **GEORGINA ROCKETT**
Exploration Manager
- ◆ **LYNDA FREWER**
Senior Geologist
- ◆ **JOHN CHAPMAN**
Principal Delta Diamond Laboratory
- ◆ **JOHN LYNCH**
Director, Mining Professional and Consultant Geologist



Future Direction

This project is the only operating diamond mine in Australia

The recovered very high quality yellow and white diamonds have the provenance to match the unique reputation of the iconic Argyle Pink Diamonds.



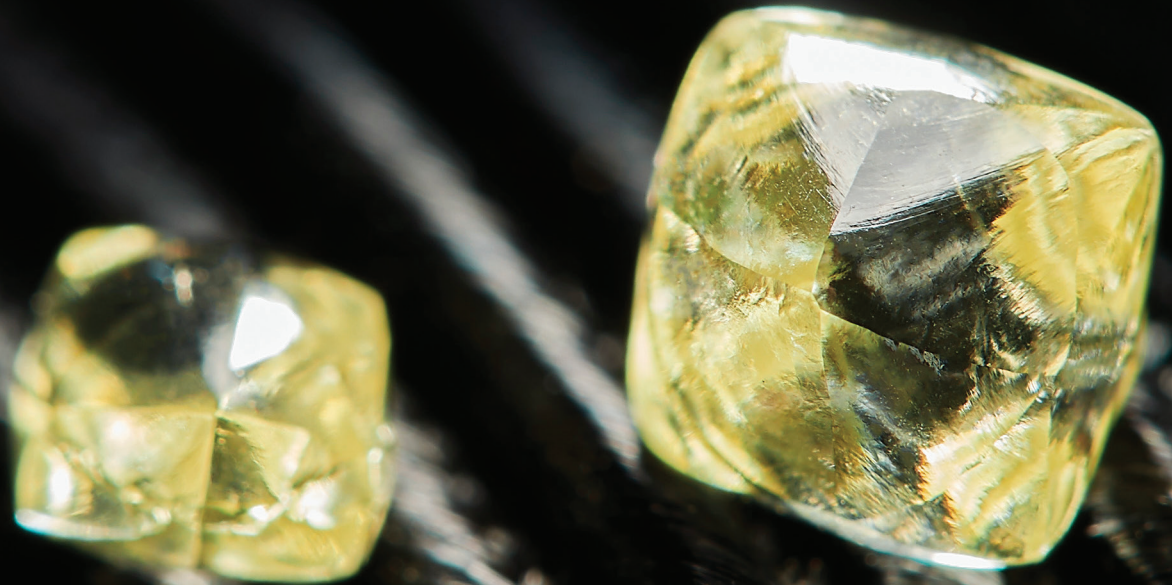
A program of further resource development is underway. The potential for further development of the project and the EDF is vast. IBDH is now seeking expressions of interest in participating in further development of this project.





IBDH

India Bore Diamond Holdings Pty Ltd



CONTACT

PETER McNALLY

Managing Director

Mobile: 0419 526 544

Email: peterm@prgmpl.com

JOHN LYNCH

Director

Mobile: 0418 183 819

Email: john@lynch.net.au

www.ibdh.com.au

The information contained herein is for general information purposes only. IBDH makes no representations or warranties of any kind, express or implied about the completeness, accuracy, reliability, suitability or availability with respect to the information contained herein. Nothing in this document is intended to be investment or financial advice or a recommendation to invest in a financial product. Before acting on such information, you should consider the appropriateness of the information having regard to your personal objectives, financial situation or needs. In particular, you should obtain professional advice before acting on the information contained in this presentation.