



**Sarah MacNeilage Patey, DBA Diver for Hire, Epping, NH**  
[diverforhirenh@gmail.com](mailto:diverforhirenh@gmail.com)

**Jamie Burleigh, DBA LTD Diving, Nottingham, NH**  
[ltddivingnh@gmail.com](mailto:ltddivingnh@gmail.com)

**August 31, 2025**

## **Extraction Report**

Location: Country Pond, Newton/Kingston, NH

Date(s): August 20, 2025, August 19, 2025, August 20, 2025, August 25, 2025, August 26, 2025,  
August 27, 2025, August 28, 2025, August 29, 2025

Exotic/Invasive Plant(s): Brittle naiad

Diver(s): Sarah MacNeilage Patey, Jamie Burleigh

Support Crew: None

Total amount extracted (in gallons): 104.25

Total time worked (in hours): 48.5

Detailed report includes Extraction Narrative, Extraction Log, Map, Photos

### **Narrative:**

On Saturday, August 16, 2025, divers received a direct email request from Lake Road resident Barbara Rogers-Scharneck, who'd read the previous extraction report, inquiring about weed removal in Lake Road cove. While divers advised they could not remove the native plants growing in the cove, they could follow up on her report of brittle naiad in her dock area. Thus, divers started the first day at Lake Road cove, where they could incorporate her request with the state work to be performed. They extracted more brittle naiad from within the cove and from the first dock, its beach, the second dock and floating dock area just south. Plants in the beach and dock areas were in water about three feet deep. The plants along the beach were tangled in elodea and barely six inches tall, while those farther out were no more than a foot tall. Divers transited to the shoreline just north of Lake Road cove, where the house is alone up on the hill. Plants were very small and rooted in rocks right along the shoreline. Across from there, divers extracted from the northernmost point on island and around corner where a single spot was marked. A few plants were found at the latter, while most plants were extracted from the open water side of the lily pads and reeds on the point. Plants here were less than a foot tall and in water two feet deep. Divers transited to the southern side of the north side of the island, where they extracted from the edge of and inside the lily pads and reeds. Plants were generally small, except those closer to the opening in lily pads towards the north. Those brittle naiad plants were taller, bushier, and generally covered in silt from boat activity.

Divers began day two at the two points off the south side of Wilders Grove Road. Very few plants were found and extracted. Combined, divers extracted a negligible amount of brittle naiad. Plants at the first spot were small and bushy and right up on the shoreline. Divers searched the open water where plants were extracted last season, but none were found. At the south-most point, one small, bushy plant right up on the beach and one slim, one-foot-tall plant right under the bow of the boat were extracted. At the two points off Merrill Avenue, divers did not find any plants in the north-most spot deep in the watershed and reeds, but along the watershed and reeds to the southern side of this point, divers extracted brittle naiad plants of various sizes. Most of the plants were extracted from the open water and beach area. The plants in this area reached up to two feet tall with bushy tops. Many were laying over on the lake bottom. At Greg's direction, divers began searching the lily pad wall south of the Sunshine Drive boat launch. Divers searched the first third before the light began to fade. One cluster and a few very small plants were extracted here and there. Divers suspect plants were buried under boat wash. Divers ended the day performing a quick snorkel search of the beach off Sunshine Drive.

Compared to last season, the growth was significantly less. Plants were up to two feet tall with bushy tops. Divers would return to this area to extract further.

On the third day, divers began at the last spot marked on the state's survey map, where Dana Akers resides. There, divers extracted from three spots. One plant was extracted east of the plane and docks, and two small clusters were extracted west of the plane and docks. Plants were one and a half feet tall in water up to four feet deep. Divers transited to the Sunshine Drive beach area and extracted a small quality of plants from last season's extensive field area. Plants were up to two feet tall in water as deep as five feet. The largest growth was extracted from the area closest to the boats and the lily pads just off the beach. Divers extracted very little from the open water, where plants grew to about six inches tall in water six feet deep.

Divers started the fourth day at the Whispering Pines Campground area, where previously there'd been a large field in between two boats. Plant growth was seen in the general area, with the heaviest concentration between the boats and behind the last docked boat. Lighter growth was extracted from the lily pads running north along the shoreline. While plants ranged in size, those right up on the stern of the Godfrey pontoon boat nearly reached the surface. Divers were silted out and transited to the southwestern side of the north side of the island. In the lily pads and reeds running along the island as far out as the point, divers extracted brittle naiad from water between two and four feet deep. At the point some plants were laying over covered in silt. Plant height was generally small, no more than a foot and a half foot tall. At the Sunshine Drive boat launch and beach area, divers continued to extract from the area right off the launch and behind the first set of boats. Most of what remained in this area was behind the jet skis. Divers checked the area north of the beach and found the next heavy concentration behind the black pontoon boat. These plants nearly reached the surface in water five feet deep. Divers determined to start at this location the next day.

On day five, divers focused solely on the Sunshine Drive boat launch and beach area. They started with the area behind the black pontoon boat. Large clusters of brittle naiad reached just below the surface in water two to five feet deep. Plant growth extended as far as the lily pads in front of the patriotic house. Divers moved over to the area behind the red pontoon boat and the blue speedboat. They extracted smaller plants, less than a foot tall from the vicinity of these boats and as far as the lily pads just the other side of the boat launch. As no other plants have replaced the brittle naiad from last year's mass extraction, the bottom is all loose silt, and divers were silted out.

On day six divers returned to Whispering Pines Campground, where they extracted all the remaining plants they could see and feel. There was one last cluster behind the blue Godfrey boat, scattered plants between it and the Four Winns boat, some behind white boat at the end of the docks, and some throughout the cove. Then divers transited to the center northern side of the island, where they found and extracted plants between six inches and two feet tall in water up to three feet deep. The taller plants were laying over under boat wash. The smaller plants were growing just along the water-reeds-grass line.

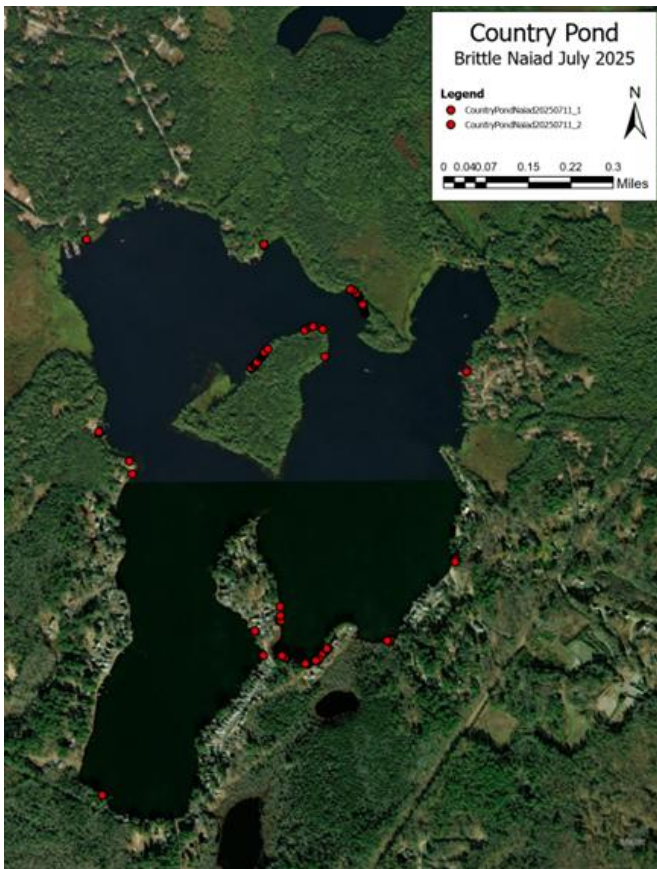
Divers began the seventh day extracting from Lake Road cove, where small, less than a foot tall, plants were trying to reclaim the lake bottom. Divers were silted out and moved onto the island. Divers returned to the central north side of the island. Divers divided the area, one taking along the reeds, lily pads and grass, and the other the open water between the island and the small outcropping of lily pads. In the latter area, a field of brittle naiad plants was found lying over covered in silt. Divers were eventually silted out in this area as well.

On the last day, divers focused their efforts on the central northern side of island. Another seven gallons was extracted from the field in the open water, while another one and a half gallons was extracted from the reeds and grass line.

Log:

Diver	Date	Water Body	Vessel Used	Extraction Location	Number of Bags	Yield (Gallons)	Bottom Type
Sarah MacNeilage Patey	8/18/2025	Country Pond	16' Starcraft	Lake Road cove	1	1.00	Silt, sand
Jamie Burleigh	8/18/2025	Country Pond	16' Starcraft	Lake Road cove	1	1.00	Silt
Sarah MacNeilage Patey	8/18/2025	Country Pond	16' Starcraft	Lake Road extension/house on the hill	1	0.25	Rocks
Jamie Burleigh	8/18/2025	Country Pond	16' Starcraft	Lake Road extension/house on the hill	1	negligible	Rocks
Sarah MacNeilage Patey	8/18/2025	Country Pond	16' Starcraft	Northmost point island	1	0.25	Silt
Jamie Burleigh	8/18/2025	Country Pond	16' Starcraft	Northmost point island	1	negligible	Sand
Sarah MacNeilage Patey	8/18/2025	Country Pond	16' Starcraft	Southern northern side island	1	1.00	Silt
Jamie Burleigh	8/18/2025	Country Pond	16' Starcraft	Southern northern side island	1	1.00	Silt
				<b>8/18/2025 total</b>		<b>4.50</b>	
Sarah MacNeilage Patey	8/19/2025	Country Pond	16' Starcraft	Wilders Grove Road south	1	negligible	Silt
Jamie Burleigh	8/19/2025	Country Pond	16' Starcraft	Wilders Grove Road south	1	negligible	Silt
Sarah MacNeilage Patey	8/19/2025	Country Pond	16' Starcraft	Merrill Avenue	1	1.00	Sand
Jamie Burleigh	8/19/2025	Country Pond	16' Starcraft	Merrill Avenue	1	0.25	Sand
Sarah MacNeilage Patey	8/19/2025	Country Pond	16' Starcraft	New area to check	1	negligible	Silt
Jamie Burleigh	8/19/2025	Country Pond	16' Starcraft	New area to check	1	0.50	Silt
				<b>8/19/2025 total</b>		<b>1.75</b>	
Sarah MacNeilage Patey	8/20/2025	Country Pond	16' Starcraft	Dana Akers residence	1	negligible	Silt
Jamie Burleigh	8/20/2025	Country Pond	16' Starcraft	Dana Akers residence	1	negligible	Silt
Sarah MacNeilage Patey	8/20/2025	Country Pond	16' Starcraft	Sunshine Drive boat launch & beach	1	1.00	Silt
Jamie Burleigh	8/20/2025	Country Pond	16' Starcraft	Sunshine Drive boat launch & beach	1	1.50	Silt
				<b>8/20/2025 total</b>		<b>2.50</b>	
Sarah MacNeilage Patey	8/25/2025	Country Pond	16' Starcraft	Whispering Pines Campground	1	2.00	Silt
Jamie Burleigh	8/25/2025	Country Pond	16' Starcraft	Whispering Pines Campground	2	4.50	Silt
Sarah MacNeilage Patey	8/25/2025	Country Pond	16' Starcraft	Southwestern northside island	2	3.50	Silt, rocks
Jamie Burleigh	8/25/2025	Country Pond	16' Starcraft	Southwestern northside island	1	0.50	Silt
Sarah MacNeilage Patey	8/25/2025	Country Pond	16' Starcraft	Sunshine Drive boat launch & beach	1	1.00	Silt
Jamie Burleigh	8/25/2025	Country Pond	16' Starcraft	Sunshine Drive boat launch & beach	1	1.00	Silt
				<b>8/25/2025 total</b>		<b>12.50</b>	
Sarah MacNeilage Patey	8/26/2025	Country Pond	16' Starcraft	Sunshine Drive boat launch & beach	4	8.25	Silt
Jamie Burleigh	8/26/2025	Country Pond	16' Starcraft	Sunshine Drive boat launch & beach	4	8.00	Silt
				<b>8/26/2025 total</b>		<b>16.25</b>	
Sarah MacNeilage Patey	8/27/2025	Country Pond	16' Starcraft	Whispering Pines Campground	1	0.50	Silt
Jamie Burleigh	8/27/2025	Country Pond	16' Starcraft	Whispering Pines Campground	1	1.00	Silt
Sarah MacNeilage Patey	8/27/2025	Country Pond	16' Starcraft	Central northern side of the island	2	3.50	Silt, rocks
Jamie Burleigh	8/27/2025	Country Pond	16' Starcraft	Central northern side of the island	2	1.75	Silt, rocks
				<b>8/27/2025 total</b>		<b>39.25</b>	
Sarah MacNeilage Patey	8/28/2025	Country Pond	16' Starcraft	Lake Road cove	1	1.00	Silt
Jamie Burleigh	8/28/2025	Country Pond	16' Starcraft	Lake Road cove	1	2.00	Silt
Sarah MacNeilage Patey	8/28/2025	Country Pond	16' Starcraft	Central northern side of the island	2	2.00	Silt, rocks
Jamie Burleigh	8/28/2025	Country Pond	16' Starcraft	Central northern side of the island	4	14.00	Silt
				<b>8/28/2025 total</b>		<b>19.00</b>	
Sarah MacNeilage Patey	8/29/2025	Country Pond	16' Starcraft	Central northern side of the island	1	1.50	Silt, rocks
Jamie Burleigh	8/29/2025	Country Pond	16' Starcraft	Central northern side of the island	2	7.00	Silt
				<b>8/29/2025 total</b>		<b>8.50</b>	
				<b>Total gallons extracted</b>		<b>104.25</b>	

Map:



Photos:



Brittle naiad and elodea in  
between the docks off Lake  
Road cove.



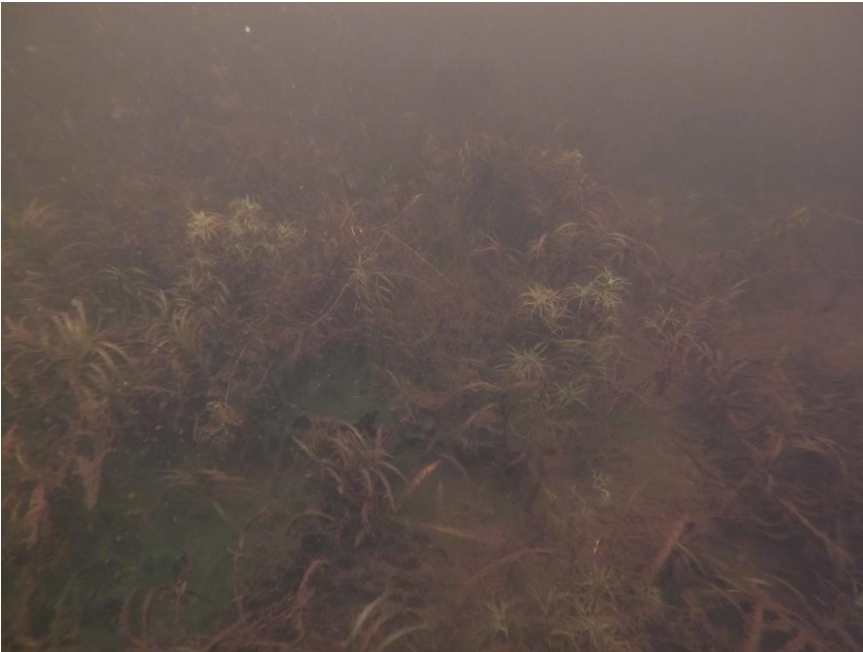
Brittle naiad clusters in the beach area between the docks off Lake Road cove.



Above left: A small, single brittle naiad plant along the southern side of Wilders Grove Road.

Above right: Brittle naiad plant from under the boat at the house just south of the culvert on the south side of Wilders Grove Road.

Below left & right: Brittle naiad plants from in front of the lily ponds at Dana Akers' shoreline.



Left: Small brittle naiad plants from along the lily pads at the Sunshine Drive beach area.



Above left: A tall brittle naiad plant from in front of the lily pads and off the wooden dock along Sunshine Drive.

Above right: A small brittle naiad plant covered in silt from behind the boats off the Sunshine Drive boat launch.

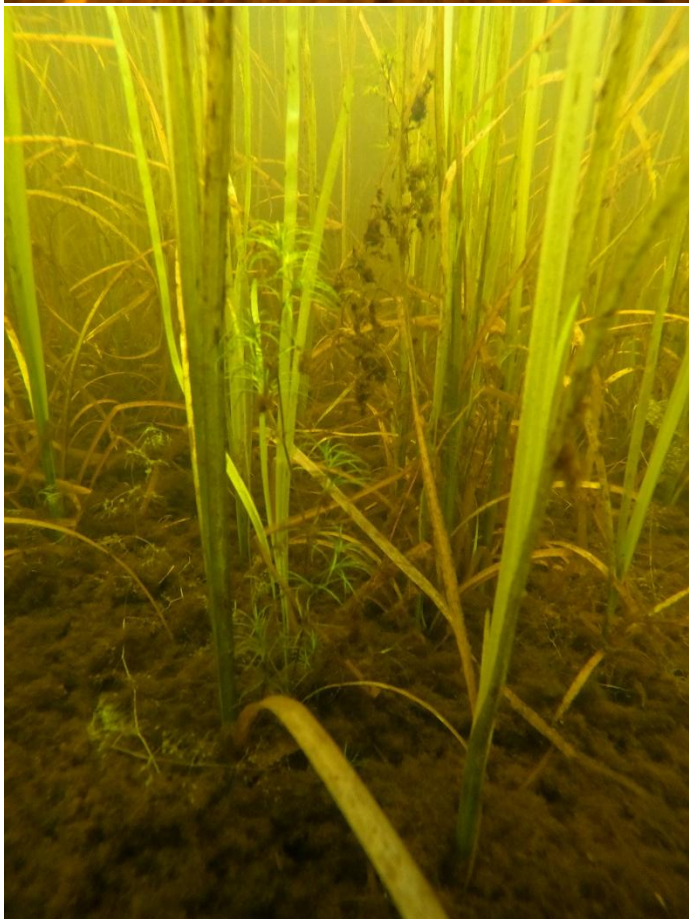
Right: A large cluster of brittle naiad from beside the blue Godfrey boat, which was part of the field between this boat and the Four Winns boat.





All photos: Brittle naiad plants from the area off Sunshine Drive near the black pontoon boat where plants were tall and close to the surface.





All photos: Brittle naiad off the central northern side of the island. A large field was covered in boat wash in the open water, and single plants were mixed in with the predominately grass and reeds along the false shoreline.